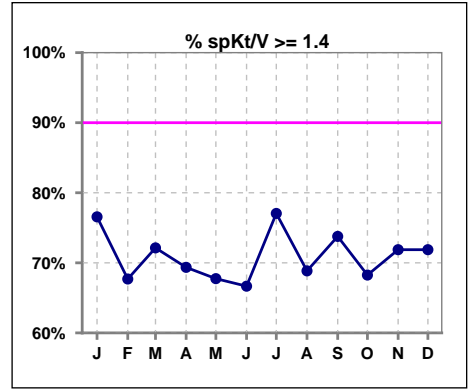
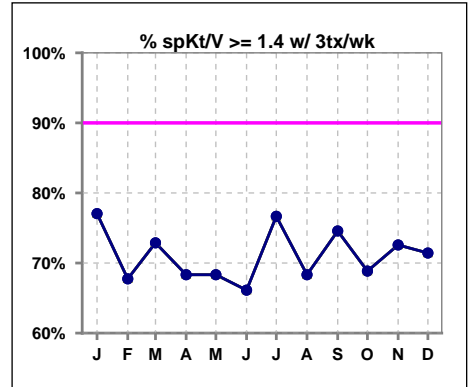


I. ADEQUACY OF DIALYSIS

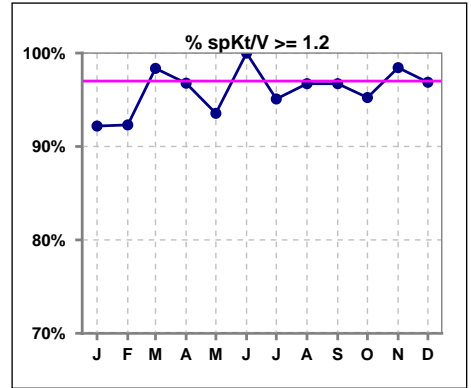
	Jan	Feb	Mar	Apr	May	Jun	Jul	Aug	Sep	Oct	Nov	Dec
# spKt/V	64	65	61	62	62	63	61	61	61	63	64	64
# spKt/V >= 1.4	49	44	44	43	42	42	47	42	45	43	46	46
Pop. Mean	1.57	1.54	1.58	1.58	1.55	1.57	1.61	1.55	1.62	1.59	1.59	1.58
Std. Deviation	0.27	0.28	0.26	0.34	0.29	0.26	0.32	0.29	0.35	0.34	0.29	0.29
% spKt/V >= 1.4	77%	68%	72%	69%	68%	67%	77%	69%	74%	68%	72%	72%



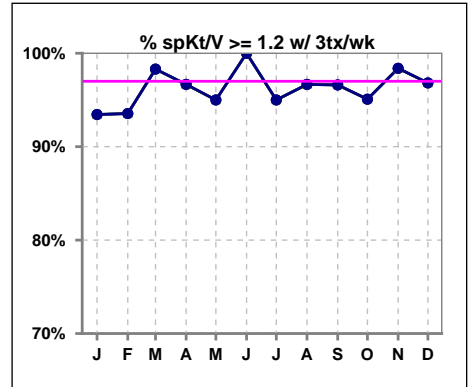
	Jan	Feb	Mar	Apr	May	Jun	Jul	Aug	Sep	Oct	Nov	Dec
# spKt/V w/ 3tx/wk	61	62	59	60	60	62	60	60	59	61	62	63
# spKt/V >=1.4 w/3tx/wk	47	42	43	41	41	41	46	41	44	42	45	45
Pop. Mean	1.56	1.54	1.57	1.57	1.56	1.56	1.60	1.54	1.61	1.58	1.59	1.57
Std. Deviation	0.26	0.28	0.25	0.33	0.29	0.25	0.31	0.28	0.33	0.33	0.28	0.28
% >=1.4 w/3tx/wk	77%	68%	73%	68%	68%	66%	77%	68%	75%	69%	73%	71%



	Jan	Feb	Mar	Apr	May	Jun	Jul	Aug	Sep	Oct	Nov	Dec
# spKt/V	64	65	61	62	62	63	61	61	61	63	64	64
# spKt/V >= 1.2	59	60	60	60	58	63	58	59	59	60	63	62
Pop. Mean	1.57	1.54	1.58	1.58	1.55	1.57	1.61	1.55	1.62	1.59	1.59	1.58
Std. Deviation	0.27	0.28	0.26	0.34	0.29	0.26	0.32	0.29	0.35	0.34	0.29	0.29
% spKt/V >= 1.2	92%	92%	98%	97%	94%	100%	95%	97%	97%	95%	98%	97%



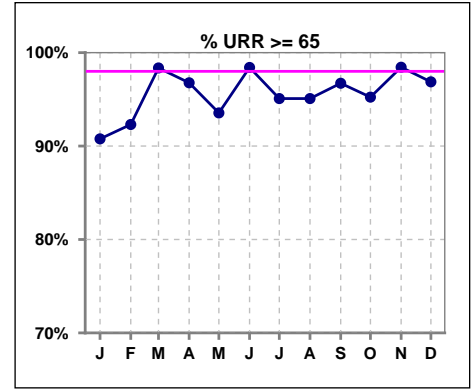
	Jan	Feb	Mar	Apr	May	Jun	Jul	Aug	Sep	Oct	Nov	Dec
# spKt/V w/ 3tx/wk	61	62	59	60	60	62	60	60	59	61	62	63
# spKt/V >=1.2 w/3tx/wk	57	58	58	58	57	62	57	58	57	58	61	61
Pop. Mean	1.56	1.54	1.57	1.57	1.56	1.56	1.60	1.54	1.61	1.58	1.59	1.57
Std. Deviation	0.26	0.28	0.25	0.33	0.29	0.25	0.31	0.28	0.33	0.33	0.28	0.28
% >=1.2 w/3tx/wk	93%	94%	98%	97%	95%	100%	95%	97%	97%	95%	98%	97%



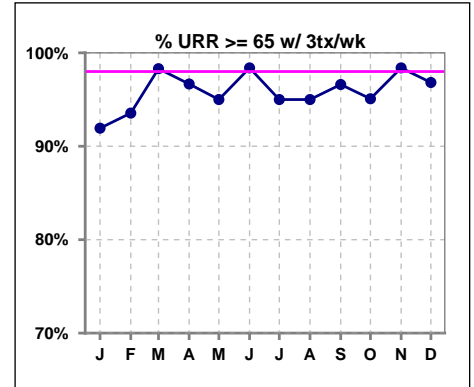
Methodology: a) All labs for 'Adequacy of Dialysis', 'Nutrition', 'Osteodystrophy', 'Anemia' and 'Diabetes' based on last value of month; b) BP's and #L processed are average of all values for month; c) Access data takes last access of month; d) Values for SGA and 'Infection Control' use most recent result.

I. ADEQUACY OF DIALYSIS - CONT.

	Jan	Feb	Mar	Apr	May	Jun	Jul	Aug	Sep	Oct	Nov	Dec
# URR	65	65	61	62	62	63	61	61	61	63	64	64
# URR >= 65	59	60	60	60	58	62	58	58	59	60	63	62
Pop. Mean	73	73	74	74	74	74	75	74	74	74	74	74
Std. Deviation	8.16	6.06	5.01	7.19	6.19	4.97	6.88	6.31	6.93	7.46	6.36	5.83
% URR >= 65	91%	92%	98%	97%	94%	98%	95%	95%	97%	95%	98%	97%



	Jan	Feb	Mar	Apr	May	Jun	Jul	Aug	Sep	Oct	Nov	Dec
# URR w/ 3tx/wk	62	62	59	60	60	62	60	60	59	61	62	63
# URR>=65 w/ 3tx/wk	57	58	58	58	57	61	57	57	57	58	61	61
Pop. Mean	73	73	74	73	74	74	75	73	74	74	74	74
Std. Deviation	8.14	5.89	5.01	7.20	6.14	4.98	6.88	6.20	6.81	7.42	6.20	5.78
% URR>=65 w/ 3tx/wk	92%	94%	98%	97%	95%	98%	95%	95%	97%	95%	98%	97%

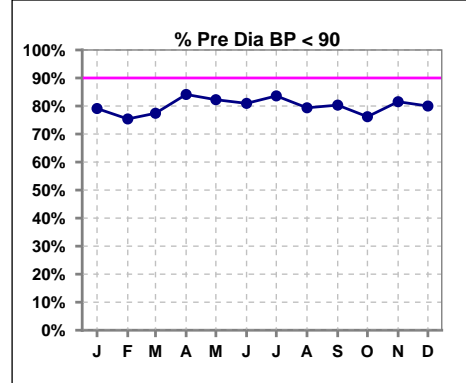


Methodology: a) All labs for 'Adequacy of Dialysis', 'Nutrition', 'Osteodystrophy', 'Anemia' and 'Diabetes' based on last value of month; b) BP's and #L processed are average of all values for month; c) Access data takes last access of month; d) Values for SGA and 'Infection Control' use most recent result.

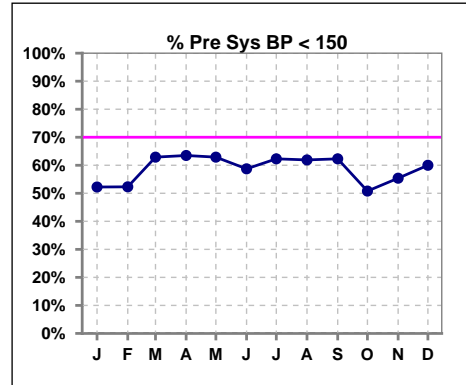
I. ADEQUACY OF DIALYSIS - CONT.

Blood Pressure Control (Pre)

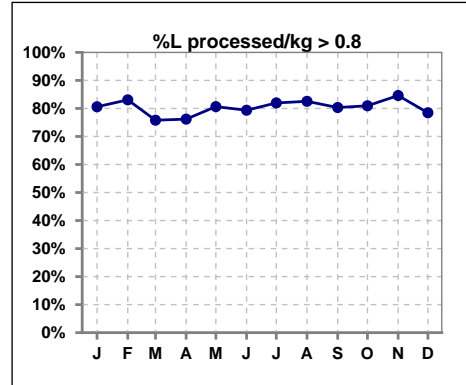
	Jan	Feb	Mar	Apr	May	Jun	Jul	Aug	Sep	Oct	Nov	Dec
# Pre Dia BP	67	65	62	63	62	63	61	63	61	63	65	65
# Pre Dia BP < 90	53	49	48	53	51	51	51	50	49	48	53	52
Pop. Mean	79	79	78	77	79	78	78	78	78	79	80	79
Std. Deviation	13.1	14.4	12.9	13.3	12.5	13.0	13.0	13.7	13.5	14.0	13.5	14.2
% Pre Dia BP < 90	79%	75%	77%	84%	82%	81%	84%	79%	80%	76%	82%	80%



	Jan	Feb	Mar	Apr	May	Jun	Jul	Aug	Sep	Oct	Nov	Dec
# Pre Sys BP	67	65	62	63	62	63	61	63	61	63	65	65
# Pre Sys BP < 150	35	34	39	40	39	37	38	39	38	32	36	39
Pop. Mean	147	149	145	146	147	147	145	144	146	149	148	146
Std. Deviation	19.1	18.9	18.1	17.9	18.7	19.4	18.4	19.9	20.0	20.5	22.2	21.9
%Pre Sys BP <150	52%	52%	63%	63%	63%	59%	62%	62%	62%	51%	55%	60%

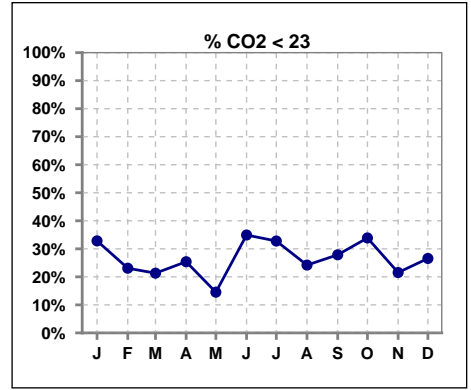


	Jan	Feb	Mar	Apr	May	Jun	Jul	Aug	Sep	Oct	Nov	Dec
# L processed/kg	67	65	62	63	62	63	61	63	61	63	65	65
# L processed/kg>0.8	54	54	47	48	50	50	50	52	49	51	55	51
Pop. Mean	1	1	1	1	1	1	1	1	1	1	1	1
Std. Deviation	0.3	0.3	0.3	0.3	0.3	0.3	0.3	0.3	0.3	0.3	0.3	0.3
% L processed/kg>0.8	81%	83%	76%	76%	81%	79%	82%	83%	80%	81%	85%	78%

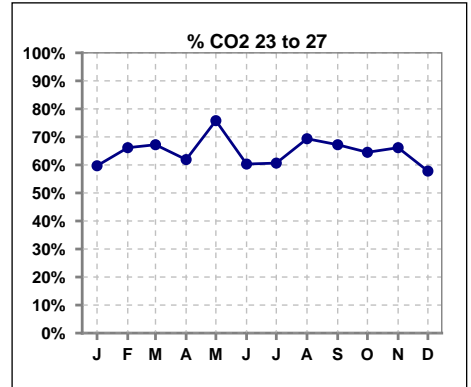


I. ADEQUACY OF DIALYSIS - CONT.

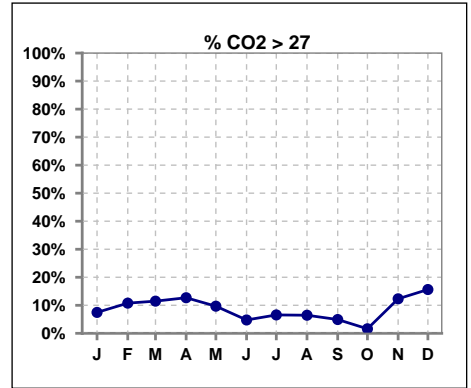
	Jan	Feb	Mar	Apr	May	Jun	Jul	Aug	Sep	Oct	Nov	Dec
# CO2	67	65	61	63	62	63	61	62	61	62	65	64
# CO2 < 23	22	15	13	16	9	22	20	15	17	21	14	17
Pop. Mean	23	24	24	24	25	23	24	24	24	23	25	25
Std. Deviation	2.95	3.04	2.96	3.13	2.17	2.87	3.17	2.78	3.19	2.62	2.83	2.99
% CO2 < 23	33%	23%	21%	25%	15%	35%	33%	24%	28%	34%	22%	27%



	Jan	Feb	Mar	Apr	May	Jun	Jul	Aug	Sep	Oct	Nov	Dec
# CO2	67	65	61	63	62	63	61	62	61	62	65	64
# CO2 23 to 27	40	43	41	39	47	38	37	43	41	40	43	37
Pop. Mean	23	24	24	24	25	23	24	24	24	23	25	25
Std. Deviation	2.95	3.04	2.96	3.13	2.17	2.87	3.17	2.78	3.19	2.62	2.83	2.99
% CO2 23 to 27	60%	66%	67%	62%	76%	60%	61%	69%	67%	65%	66%	58%



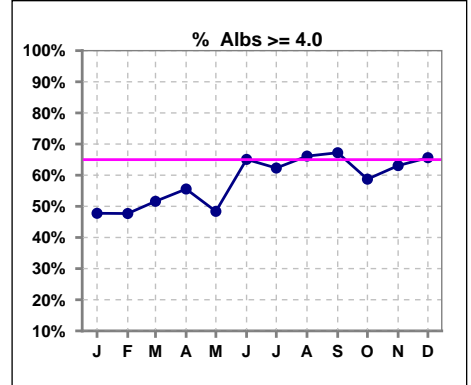
	Jan	Feb	Mar	Apr	May	Jun	Jul	Aug	Sep	Oct	Nov	Dec
# CO2	67	65	61	63	62	63	61	62	61	62	65	64
# CO2 > 27	5	7	7	8	6	3	4	4	3	1	8	10
Pop. Mean	23	24	24	24	25	23	24	24	24	23	25	25
Std. Deviation	2.95	3.04	2.96	3.13	2.17	2.87	3.17	2.78	3.19	2.62	2.83	2.99
% CO2 > 27	7%	11%	11%	13%	10%	5%	7%	6%	5%	2%	12%	16%



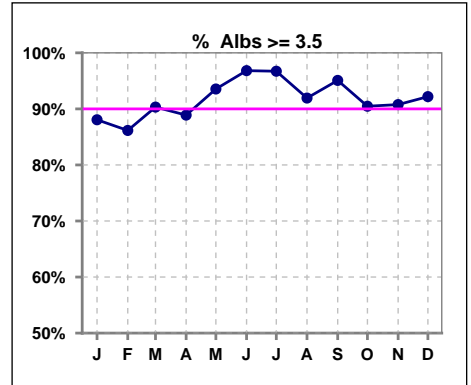
*Albumin values use BCG method - as of July 2001

II. NUTRITION

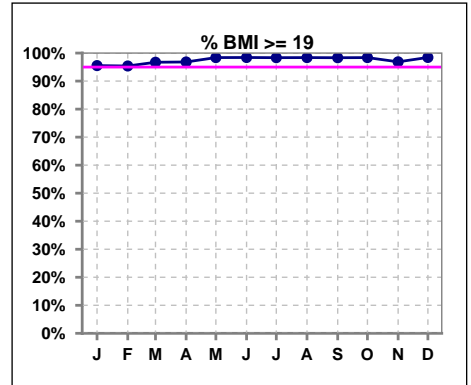
	Jan	Feb	Mar	Apr	May	Jun	Jul	Aug	Sep	Oct	Nov	Dec
# Albumin	67	65	62	63	62	63	61	62	61	63	65	64
# Albumin >= 4.0	32	31	32	35	30	41	38	41	41	37	41	42
Pop. Mean	3.9	3.9	4.0	3.9	3.9	4.1	4.0	4.0	4.0	4.0	4.0	4.0
Std. Deviation	0.43	0.41	0.41	0.42	0.34	0.36	0.37	0.37	0.36	0.38	0.44	0.40
% Alb >= 4.0	48%	48%	52%	56%	48%	65%	62%	66%	67%	59%	63%	66%



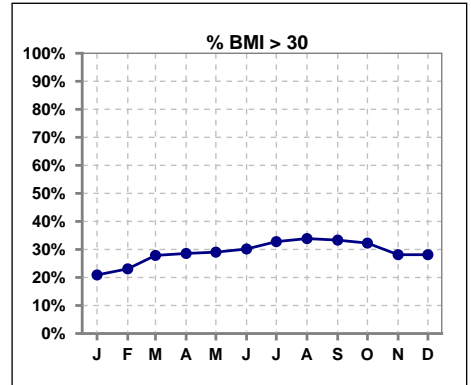
	Jan	Feb	Mar	Apr	May	Jun	Jul	Aug	Sep	Oct	Nov	Dec
# Albumin	67	65	62	63	62	63	61	62	61	63	65	64
# Albumin >= 3.5	59	56	56	56	58	61	59	57	58	57	59	59
Pop. Mean	3.9	3.9	4.0	3.9	3.9	4.1	4.0	4.0	4.0	4.0	4.0	4.0
Std. Deviation	0.43	0.41	0.41	0.42	0.34	0.36	0.37	0.37	0.36	0.38	0.44	0.40
% Alb >= 3.5	88%	86%	90%	89%	94%	97%	97%	92%	95%	90%	91%	92%



	Jan	Feb	Mar	Apr	May	Jun	Jul	Aug	Sep	Oct	Nov	Dec
# BMI	67	65	61	63	62	63	61	62	60	62	64	64
# BMI >= 19	64	62	59	61	61	62	60	61	59	61	62	63
Pop. Mean	27	27	27	27	27	28	28	28	28	28	27	27
Std. Deviation	6.2	6.1	6.8	6.6	6.5	6.6	7.4	6.7	6.9	6.4	6.3	6.3
% BMI >= 19	96%	95%	97%	97%	98%	98%	98%	98%	98%	98%	97%	98%



	Jan	Feb	Mar	Apr	May	Jun	Jul	Aug	Sep	Oct	Nov	Dec
# BMI	67	65	61	63	62	63	61	62	60	62	64	64
# BMI > 30	14	15	17	18	18	19	20	21	20	20	18	18
Pop. Mean	27	27	27	27	27	28	28	28	28	28	27	27
Std. Deviation	6.2	6.1	6.8	6.6	6.5	6.6	7.4	6.7	6.9	6.4	6.3	6.3
% BMI > 30	21%	23%	28%	29%	29%	30%	33%	34%	33%	32%	28%	28%

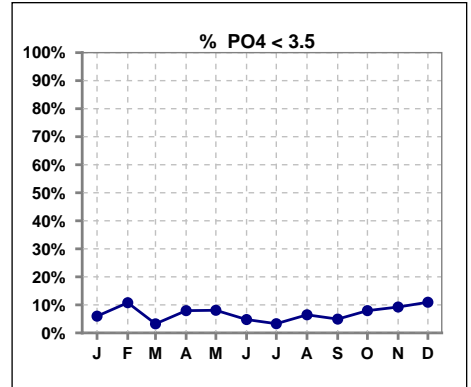


Methodology: a) All labs for 'Adequacy of Dialysis', 'Nutrition', 'Osteodystrophy', 'Anemia' and 'Diabetes' based on last value of month; b) BP's and #L processed are average of all values for month; c) Access data takes last access of month; d) Values for SGA and 'Infection Control' use most recent result.

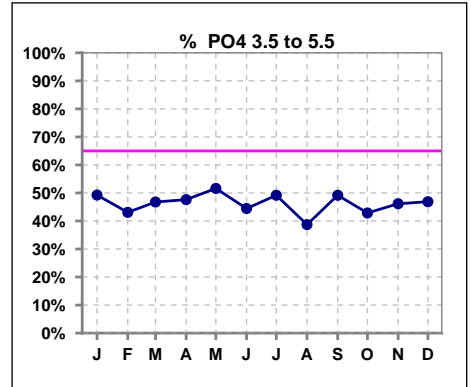
Lab methodology for PTH changed January 2012

III. OSTEODYSTROPHY

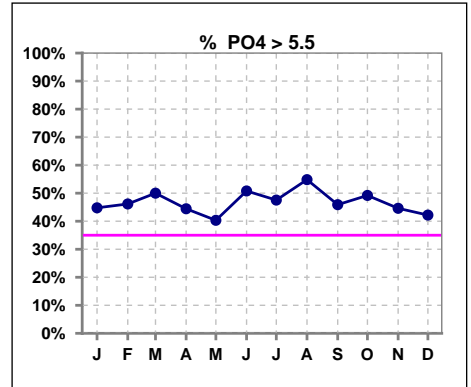
	Jan	Feb	Mar	Apr	May	Jun	Jul	Aug	Sep	Oct	Nov	Dec
# PO4	67	65	62	63	62	63	61	62	61	63	65	64
# PO4 < 3.5	4	7	2	5	5	3	2	4	3	5	6	7
Pop. Mean	5.8	5.6	6.0	5.7	5.5	6.0	5.9	6.1	5.9	5.6	5.6	5.6
Std. Deviation	2.14	1.91	1.94	1.84	1.75	2.07	2.17	2.10	2.12	1.75	1.82	2.18
% PO4 < 3.5	6%	11%	3%	8%	8%	5%	3%	6%	5%	8%	9%	11%



	Jan	Feb	Mar	Apr	May	Jun	Jul	Aug	Sep	Oct	Nov	Dec
# PO4	67	65	62	63	62	63	61	62	61	63	65	64
# PO4 3.5 to 5.5	33	28	29	30	32	28	30	24	30	27	30	30
Pop. Mean	5.8	5.6	6.0	5.7	5.5	6.0	5.9	6.1	5.9	5.6	5.6	5.6
Std. Deviation	2.14	1.91	1.94	1.84	1.75	2.07	2.17	2.10	2.12	1.75	1.82	2.18
% PO4 3.5 to 5.5	49%	43%	47%	48%	52%	44%	49%	39%	49%	43%	46%	47%



	Jan	Feb	Mar	Apr	May	Jun	Jul	Aug	Sep	Oct	Nov	Dec
# PO4	67	65	62	63	62	63	61	62	61	63	65	64
# PO4 > 5.5	30	30	31	28	25	32	29	34	28	31	29	27
Pop. Mean	5.8	5.6	6.0	5.7	5.5	6.0	5.9	6.1	5.9	5.6	5.6	5.6
Std. Deviation	2.14	1.91	1.94	1.84	1.75	2.07	2.17	2.10	2.12	1.75	1.82	2.18
% PO4 > 5.5	45%	46%	50%	44%	40%	51%	48%	55%	46%	49%	45%	42%

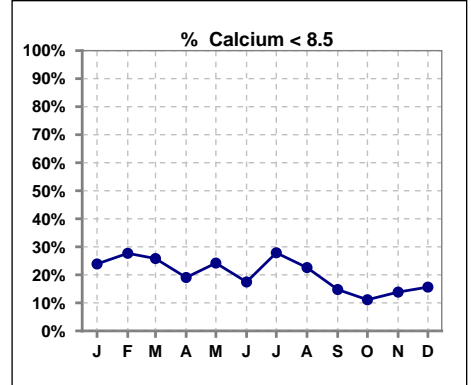


Methodology: a) All labs for 'Adequacy of Dialysis', 'Nutrition', 'Osteodystrophy', 'Anemia' and 'Diabetes' based on last value of month; b) BP's and #L processed are average of all values for month; c) Access data takes last access of month; d) Values for SGA and 'Infection Control' use most recent result.

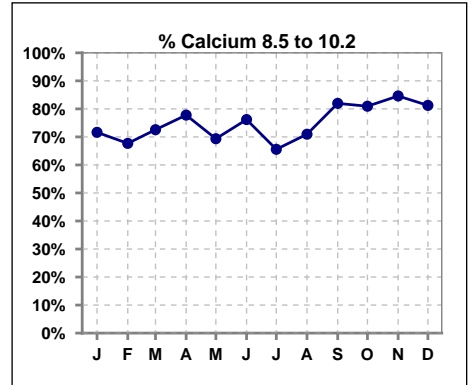
Lab methodology for PTH changed January 2012

III. OSTEODYSTROPHY - CONT.

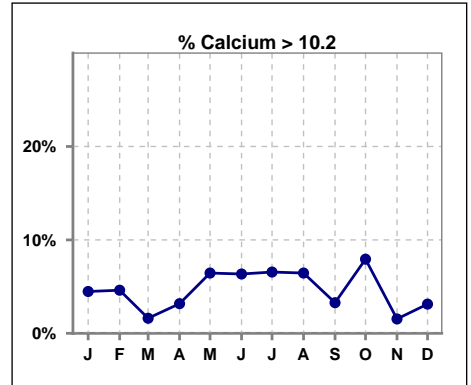
	Jan	Feb	Mar	Apr	May	Jun	Jul	Aug	Sep	Oct	Nov	Dec
# Calcium	67	65	62	63	62	63	61	62	61	63	65	64
# Calcium < 8.5	16	18	16	12	15	11	17	14	9	7	9	10
Pop. Mean	8.9	9.0	9.0	9.1	9.0	9.2	9.0	9.1	9.2	9.1	9.1	9.1
Std. Deviation	1.04	0.81	0.75	0.83	0.92	0.80	0.82	0.78	0.73	0.70	0.66	0.68
% Calcium < 8.5	24%	28%	26%	19%	24%	17%	28%	23%	15%	11%	14%	16%



	Jan	Feb	Mar	Apr	May	Jun	Jul	Aug	Sep	Oct	Nov	Dec
# Calcium	67	65	62	63	62	63	61	62	61	63	65	64
# Calcium 8.5 to 10.2	48	44	45	49	43	48	40	44	50	51	55	52
Pop. Mean	8.9	9.0	9.0	9.1	9.0	9.2	9.0	9.1	9.2	9.1	9.1	9.1
Std. Deviation	1.04	0.81	0.75	0.83	0.92	0.80	0.82	0.78	0.73	0.70	0.66	0.68
% Calcium 8.5 to 10.2	72%	68%	73%	78%	69%	76%	66%	71%	82%	81%	85%	81%



	Jan	Feb	Mar	Apr	May	Jun	Jul	Aug	Sep	Oct	Nov	Dec
# Calcium	67	65	62	63	62	63	61	62	61	63	65	64
# Calcium > 10.2	3	3	1	2	4	4	4	4	2	5	1	2
Pop. Mean	8.9	9.0	9.0	9.1	9.0	9.2	9.0	9.1	9.2	9.1	9.1	9.1
Std. Deviation	1.04	0.81	0.75	0.83	0.92	0.80	0.82	0.78	0.73	0.70	0.66	0.68
% Calcium > 10.2	4%	5%	2%	3%	6%	6%	7%	6%	3%	8%	2%	3%

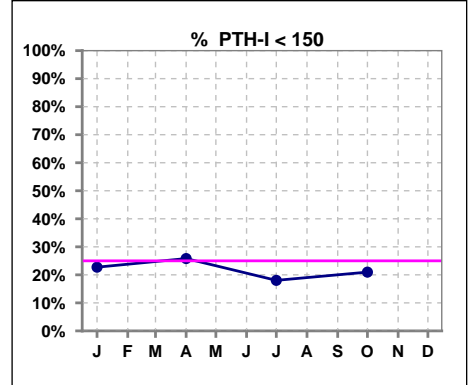


Methodology: a) All labs for 'Adequacy of Dialysis', 'Nutrition', 'Osteodystrophy', 'Anemia' and 'Diabetes' based on last value of month; b) BP's and #L processed are average of all values for month; c) Access data takes last access of month; d) Values for SGA and 'Infection Control' use most recent result.

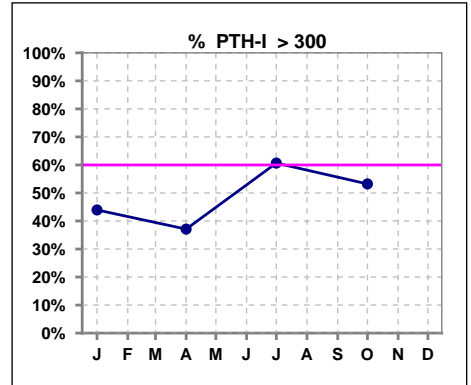
Lab methodology for PTH changed January 2012

III. OSTEODYSTROPHY - CONT.

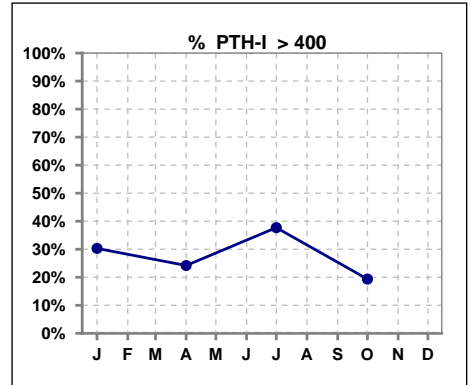
	Jan	Feb	Mar	Apr	May	Jun	Jul	Aug	Sep	Oct	Nov	Dec
# PTH-I	66			62			61			62		
# PTH-I < 150	15			16			11			13		
Pop. Mean	325			312			369			308		
Std. Deviation	235			235			201			155		
% PTH-I < 150	23%			26%			18%			21%		



	Jan	Feb	Mar	Apr	May	Jun	Jul	Aug	Sep	Oct	Nov	Dec
# PTH-I	66			62			61			62		
# PTH-I > 300	29			23			37			33		
Pop. Mean	325			312			369			308		
Std. Deviation	235			235			201			155		
% PTH-I > 300	44%			37%			61%			53%		



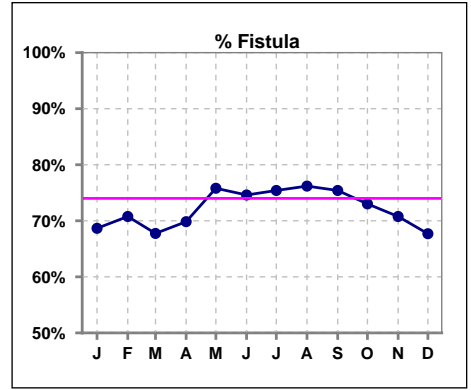
	Jan	Feb	Mar	Apr	May	Jun	Jul	Aug	Sep	Oct	Nov	Dec
# PTH-I	66			62			61			62		
# PTH-I > 400	20			15			23			12		
Pop. Mean	325			312			369			308		
Std. Deviation	235			235			201			155		
% PTH-I > 400	30%			24%			38%			19%		



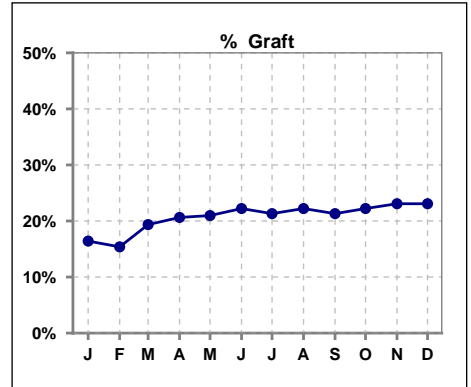
Methodology: a) All labs for 'Adequacy of Dialysis', 'Nutrition', 'Osteodystrophy', 'Anemia' and 'Diabetes' based on last value of month; b) BP's and #L processed are average of all values for month; c) Access data takes last access of month; d) Values for SGA and 'Infection Control' use most recent result.

IV. ACCESS

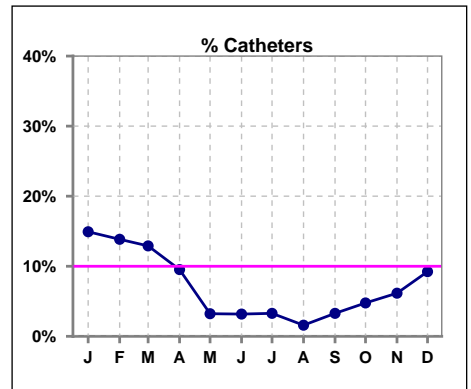
	Jan	Feb	Mar	Apr	May	Jun	Jul	Aug	Sep	Oct	Nov	Dec
# Access	67	65	62	63	62	63	61	63	61	63	65	65
# Fistula	46	46	42	44	47	47	46	48	46	46	46	44
% Fistula	69%	71%	68%	70%	76%	75%	75%	76%	75%	73%	71%	68%



	Jan	Feb	Mar	Apr	May	Jun	Jul	Aug	Sep	Oct	Nov	Dec
# Access	67	65	62	63	62	63	61	63	61	63	65	65
# Graft	11	10	12	13	13	14	13	14	13	14	15	15
% Graft	16%	15%	19%	21%	21%	22%	21%	22%	21%	22%	23%	23%



	Jan	Feb	Mar	Apr	May	Jun	Jul	Aug	Sep	Oct	Nov	Dec
# Access	67	65	62	63	62	63	61	63	61	63	65	65
# Catheters	10	9	8	6	2	2	2	1	2	3	4	6
% Catheters	15%	14%	13%	10%	3%	3%	3%	2%	3%	5%	6%	9%



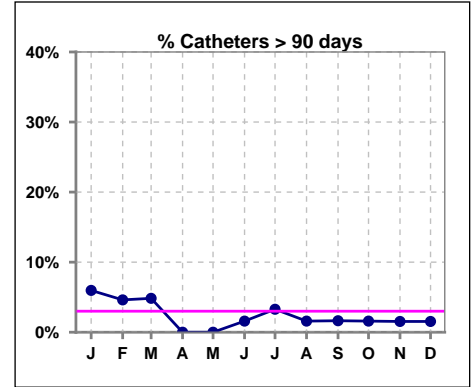
Methodology: a) All labs for 'Adequacy of Dialysis', 'Nutrition', 'Osteodystrophy', 'Anemia' and 'Diabetes' based on last value of month; b) BP's and #L processed are average of all values for month; c) Access data takes last access of month; d) Values for SGA and 'Infection Control' use most recent result.

IV. ACCESS - CONT.

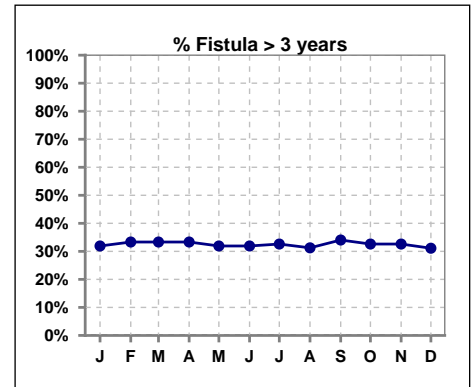
Catheters > 90 days

	Jan	Feb	Mar	Apr	May	Jun	Jul	Aug	Sep	Oct	Nov	Dec
# Access	67	65	62	63	62	63	61	63	61	63	65	65
# Catheters	4	3	3	0	0	1	2	1	1	1	1	1
% Catheters	6%	5%	5%	0%	0%	2%	3%	2%	2%	2%	2%	2%

Definition: Catheter in use on last treatment of the month



	Jan	Feb	Mar	Apr	May	Jun	Jul	Aug	Sep	Oct	Nov	Dec
# Fistula	47	45	42	45	47	47	46	48	47	46	46	45
# Fistula > 3 yrs	15	15	14	15	15	15	15	15	16	15	15	14
% Fistula > 3 yrs	32%	33%	33%	33%	32%	32%	33%	31%	34%	33%	33%	31%



All rates are calculated per 100 patient-month

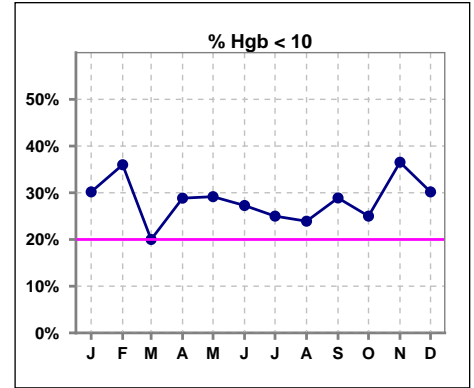
(number of infections/number of accesses x100)

BKC	Total Fistula	Fistula Infected	Fistula ARB Rate	National Rate	Total Grafts	Graft Infected	Graft ARB Rate	National Rate	Total Cath	Cath Infected	Cath ARB Rate	National Rate	Total Accesses	Total Access Infected	All ARB Rate Per 100 pt- Months	National Rate
2013-2014 Month																
Dec	44	0	0	0.23	9	0	0	0.51	10	0	0	2.55	63	0	0	
Jan	46	0	0	0.23	11	0	0	0.51	8	0	0	2.55	65	0	0	
Feb	45	0	0	0.23	11	0	0	0.51	8	0	0	2.55	64	0	0	
Mar	43	0	0	0.23	12	0	0	0.51	10	0	0	2.55	65	0	0	
April	44	0	0	0.23	12	0	0	0.51	3	0	0	2.55	59	0	0	
May	46	1	2.1739	0.23	15	0	0	0.51	1	0	0	2.55	62	1	1.613	
June	48	0	0	0.23	14	0	0	0.51	0	0	0	2.55	62	0	0	
July	48	0	0	0.23	13	0	0	0.51	0	0	0	2.55	61	0	0	
Aug	48	0	0	0.23	12	0	0	0.51	0	0	0	2.55	60	0	0	
sept	49	0	0	0.23	14	0	0	0.51	0	0	0	2.55	63	0	0	
Oct	47	0	0	0.23	14	0	0	1.51	1	0	0	2.55	62	0	0	
Nov	45	0	0	0.23	14	0	0	1.51	3	0	0	2.55	62	0	0	
Annual Total:	553	1	0.1808		151	0	0		44	0	0		748	1	0.134	0.88

V. ANEMIA

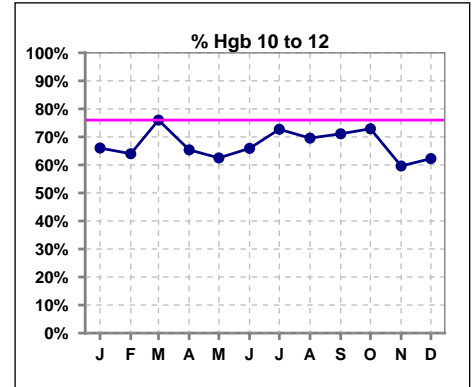
	Jan	Feb	Mar	Apr	May	Jun	Jul	Aug	Sep	Oct	Nov	Dec
# Hgb	53	50	50	52	48	44	44	46	45	48	52	53
# Hgb < 10	16	18	10	15	14	12	11	11	13	12	19	16
Pop. Mean	10.4	10.3	10.5	10.4	10.6	10.5	10.7	10.5	10.3	10.4	10.4	10.5
Std. Deviation	1.2	1.1	1.1	1.2	1.3	1.2	1.1	1.0	0.9	1.1	1.2	1.3
% Hgb < 10	30%	36%	20%	29%	29%	27%	25%	24%	29%	25%	37%	30%

Note: Excludes patients who received no ESA in month.



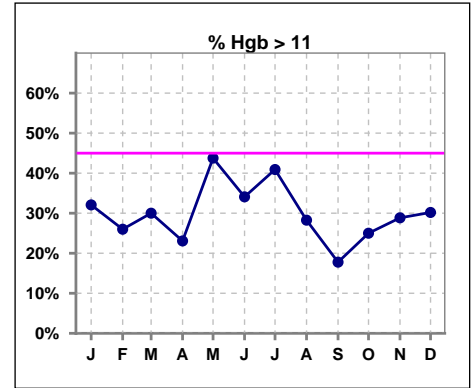
	Jan	Feb	Mar	Apr	May	Jun	Jul	Aug	Sep	Oct	Nov	Dec
# Hgb	53	50	50	52	48	44	44	46	45	48	52	53
# Hgb 10 to 12	35	32	38	34	30	29	32	32	32	35	31	33
Pop. Mean	10.4	10.3	10.5	10.4	10.6	10.5	10.7	10.5	10.3	10.4	10.4	10.5
Std. Deviation	1.2	1.1	1.1	1.2	1.3	1.2	1.1	1.0	0.9	1.1	1.2	1.3
% Hgb 10 to 12	66%	64%	76%	65%	63%	66%	73%	70%	71%	73%	60%	62%

Note: Excludes patients who received no ESA in month.



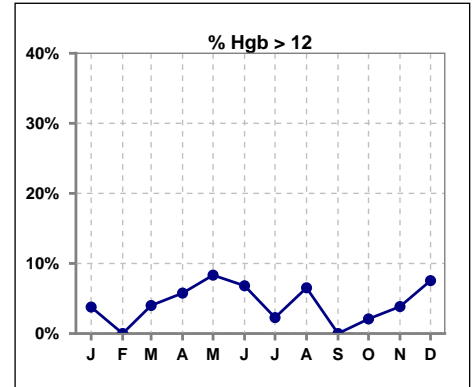
	Jan	Feb	Mar	Apr	May	Jun	Jul	Aug	Sep	Oct	Nov	Dec
# Hgb	53	50	50	52	48	44	44	46	45	48	52	53
# Hgb > 11	17	13	15	12	21	15	18	13	8	12	15	16
Pop. Mean	10.4	10.3	10.5	10.4	10.6	10.5	10.7	10.5	10.3	10.4	10.4	10.5
Std. Deviation	1.2	1.1	1.1	1.2	1.3	1.2	1.1	1.0	0.9	1.1	1.2	1.3
% Hgb > 11	32%	26%	30%	23%	44%	34%	41%	28%	18%	25%	29%	30%

Note: Excludes patients who received no ESA in month.



	Jan	Feb	Mar	Apr	May	Jun	Jul	Aug	Sep	Oct	Nov	Dec
# Hgb	53	50	50	52	48	44	44	46	45	48	52	53
# Hgb > 12	2	0	2	3	4	3	1	3	0	1	2	4
Pop. Mean	10.4	10.3	10.5	10.4	10.6	10.5	10.7	10.5	10.3	10.4	10.4	10.5
Std. Deviation	1.2	1.1	1.1	1.2	1.3	1.2	1.1	1.0	0.9	1.1	1.2	1.3
% Hgb > 12	4%	0%	4%	6%	8%	7%	2%	7%	0%	2%	4%	8%

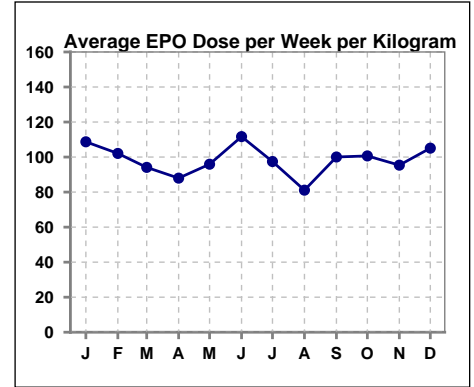
Note: Excludes patients who received no ESA in month.



V. ANEMIA - CONT.

Average EPO Dose per Week per Kilogram

	Jan	Feb	Mar	Apr	May	Jun	Jul	Aug	Sep	Oct	Nov	Dec
# Average EPO	108.7	102.1	94.1	88.0	95.9	111.7	97.4	81.1	100.0	100.7	95.4	105.1

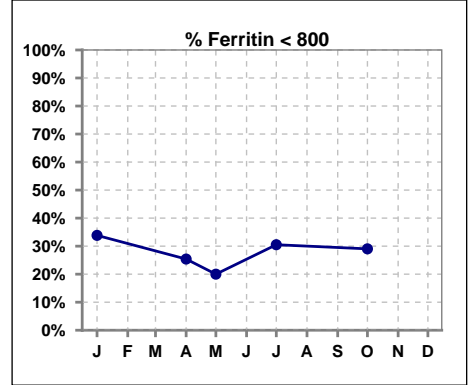


Methodology: a) All labs for 'Adequacy of Dialysis', 'Nutrition', 'Osteodystrophy', 'Anemia' and 'Diabetes' based on last value of month; b) BP's and #L processed are average of all values for month; c) Access data takes last access of month; d) Values for SGA and 'Infection Control' use most recent result.

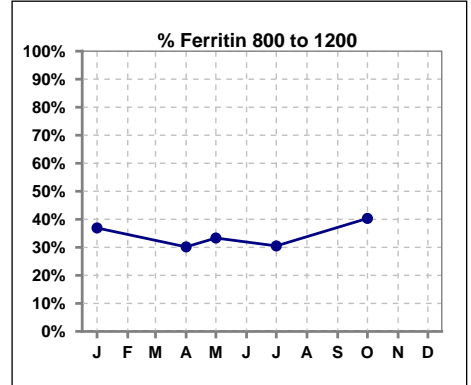
V. ANEMIA - CONT.

Iron Profile

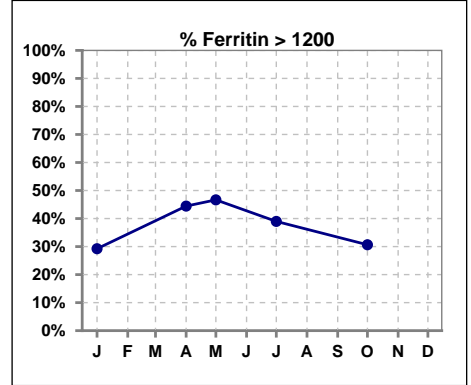
	Jan	Feb	Mar	Apr	May	Jun	Jul	Aug	Sep	Oct	Nov	Dec
# Ferritin	65			63	60		59			62		
# Ferritin < 800	22			16	12		18			18		
Pop. Mean	1035			1076	1099		1106			976		
Std. Deviation	574			453	469		591			428		
% Ferritin < 800	34%			25%	20%		31%			29%		



	Jan	Feb	Mar	Apr	May	Jun	Jul	Aug	Sep	Oct	Nov	Dec
# Ferritin	65			63	60		59			62		
# Ferritin 800 to 1200	24			19	20		18			25		
Pop. Mean	1035			1076	1099		1106			976		
Std. Deviation	574			453	469		591			428		
% Ferritin 800 to 1200	37%			30%	33%		31%			40%		

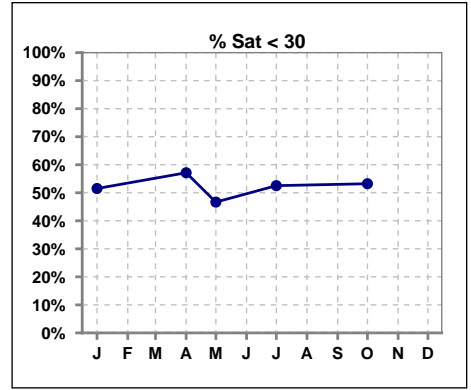


	Jan	Feb	Mar	Apr	May	Jun	Jul	Aug	Sep	Oct	Nov	Dec
# Ferritin	65			63	60		59			62		
# Ferritin > 1200	19			28	28		23			19		
Pop. Mean	1035			1076	1099		1106			976		
Std. Deviation	574			453	469		591			428		
% Ferritin > 1200	29%			44%	47%		39%			31%		

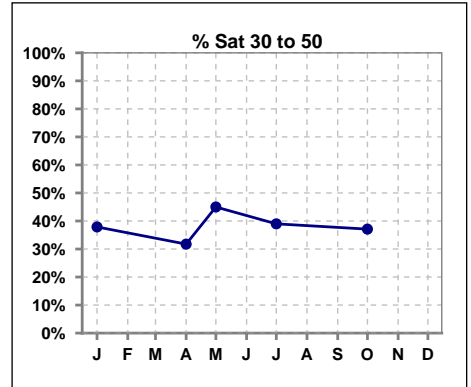


V. ANEMIA - CONT.

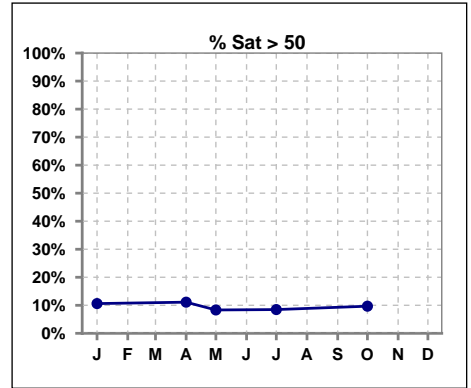
	Jan	Feb	Mar	Apr	May	Jun	Jul	Aug	Sep	Oct	Nov	Dec
# % Sat	66			63	60		59			62		
# % Sat < 30	34			36	28		31			33		
Pop. Mean	33			31	32		32			32		
Std. Deviation	17			18	16		16			16		
%% Sat < 30	52%			57%	47%		53%			53%		



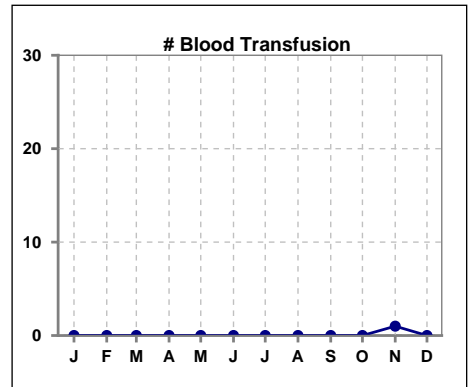
	Jan	Feb	Mar	Apr	May	Jun	Jul	Aug	Sep	Oct	Nov	Dec
# % Sat	66			63	60		59			62		
# % Sat 30 to 50	25			20	27		23			23		
Pop. Mean	33			31	32		32			32		
Std. Deviation	17			18	16		16			16		
%% Sat 30 to 50	38%			32%	45%		39%			37%		



	Jan	Feb	Mar	Apr	May	Jun	Jul	Aug	Sep	Oct	Nov	Dec
# % Sat	66			63	60		59			62		
# % Sat > 50	7			7	5		5			6		
Pop. Mean	33			31	32		32			32		
Std. Deviation	17			18	16		16			16		
%% Sat > 50	11%			11%	8%		8%			10%		



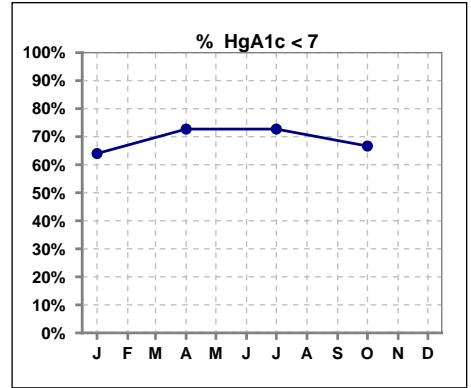
	Jan	Feb	Mar	Apr	May	Jun	Jul	Aug	Sep	Oct	Nov	Dec
# Patient	67	65	64	64	62	64	61	63	62	63	65	65
# Blood Transfusion	0	0	0	0	0	0	0	0	0	0	1	0



Methodology: a) All labs for 'Adequacy of Dialysis', 'Nutrition', 'Osteodystrophy', 'Anemia' and 'Diabetes' based on last value of month; b) BP's and #L processed are average of all values for month; c) Access data takes last access of month; d) Values for SGA and 'Infection Control' use most recent result.

VI. Diabetes

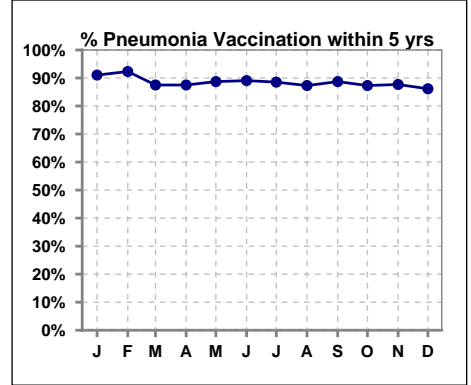
	Jan	Feb	Mar	Apr	May	Jun	Jul	Aug	Sep	Oct	Nov	Dec
# HgA1c	25			22			22			21		
# HgA1c < 7	16			16			16			14		
Pop. Mean	6.4			6.6			6.6			6.4		
Std. Deviation	1.28			1.40			1.46			1.34		
% HgA1c < 7	64%			73%			73%			67%		



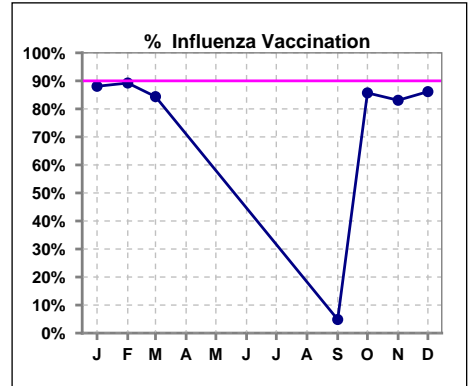
VII. Infection Control

Pneumonia vaccination within the past five years

	Jan	Feb	Mar	Apr	May	Jun	Jul	Aug	Sep	Oct	Nov	Dec
# Patient	67	65	64	64	62	64	61	63	62	63	65	65
# Pneumonia	61	60	56	56	55	57	54	55	55	55	57	56
% Pneumonia	91%	92%	88%	88%	89%	89%	89%	87%	89%	87%	88%	86%



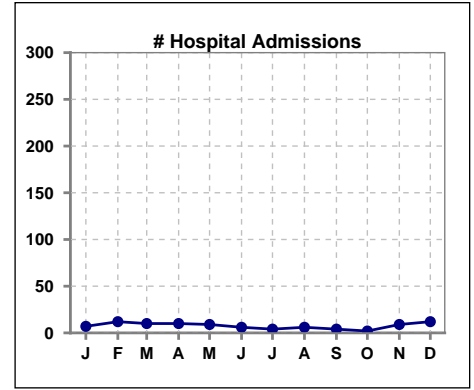
	Jan	Feb	Mar	Apr	May	Jun	Jul	Aug	Sep	Oct	Nov	Dec
# Patient	67	65	64						62	63	65	65
# Influenza	59	58	54						3	54	54	56
% Influenza	88%	89%	84%						5%	86%	83%	86%



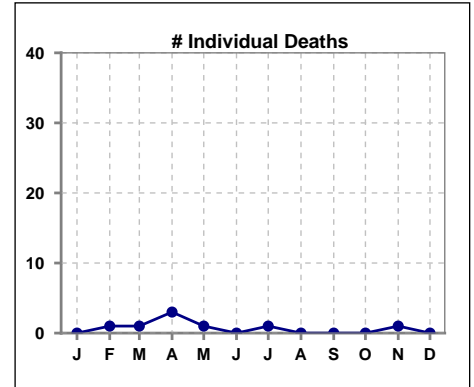
Methodology: a) All labs for 'Adequacy of Dialysis', 'Nutrition', 'Osteodystrophy', 'Anemia' and 'Diabetes' based on last value of month; b) BP's and #L processed are average of all values for month; c) Access data takes last access of month; d) Values for SGA and 'Infection Control' use most recent result.

VIII. Misc

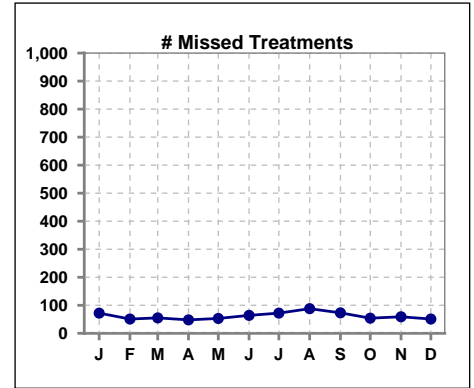
	Jan	Feb	Mar	Apr	May	Jun	Jul	Aug	Sep	Oct	Nov	Dec
# Patient	67	65	64	64	62	64	61	63	62	63	65	65
# Hospital Admissions	7	12	10	10	9	6	4	6	4	2	9	12



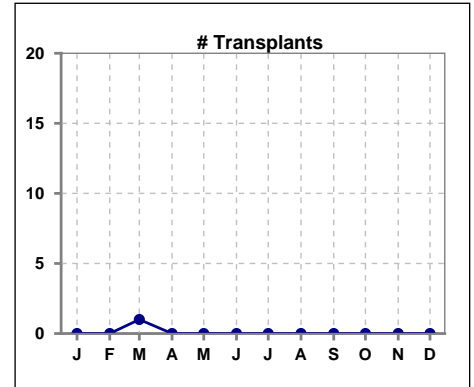
	Jan	Feb	Mar	Apr	May	Jun	Jul	Aug	Sep	Oct	Nov	Dec
# Patient	67	65	64	64	62	64	61	63	62	63	65	65
# Individual Deaths	0	1	1	3	1	0	1	0	0	0	1	0



	Jan	Feb	Mar	Apr	May	Jun	Jul	Aug	Sep	Oct	Nov	Dec
# Patient	67	65	64	64	62	64	61	63	62	63	65	65
# Missed Treatments	72	51	55	48	53	64	72	88	73	54	59	51



	Jan	Feb	Mar	Apr	May	Jun	Jul	Aug	Sep	Oct	Nov	Dec
# Patient	67	65	64	64	62	64	61	63	62	63	65	65
# Transplants	0	0	1	0	0	0	0	0	0	0	0	0



Methodology: a) All labs for 'Adequacy of Dialysis', 'Nutrition', 'Osteodystrophy', 'Anemia' and 'Diabetes' based on last value of month; b) BP's and #L processed are average of all values for month; c) Access data takes last access of month; d) Values for SGA and 'Infection Control' use most recent result.