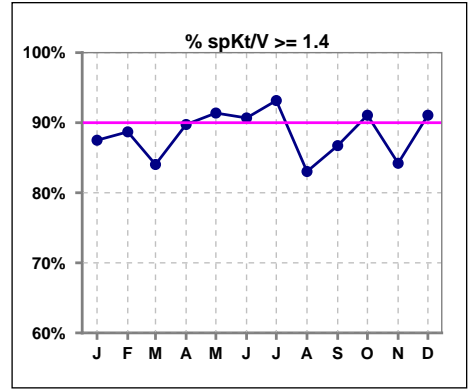
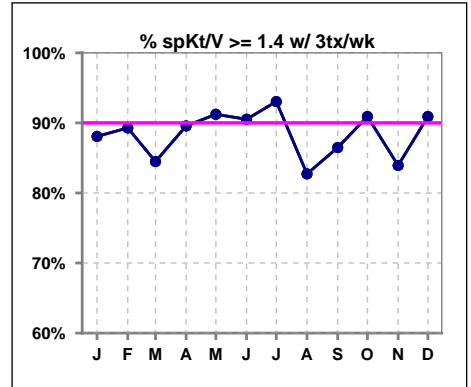


I. ADEQUACY OF DIALYSIS

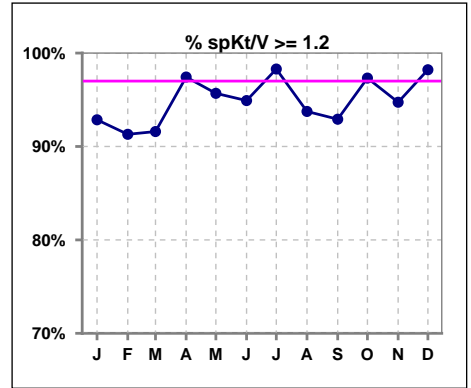
	Jan	Feb	Mar	Apr	May	Jun	Jul	Aug	Sep	Oct	Nov	Dec
# spKt/V	112	115	119	117	116	118	117	112	113	112	114	112
# spKt/V >= 1.4	98	102	100	105	106	107	109	93	98	102	96	102
Pop. Mean	1.66	1.64	1.63	1.68	1.69	1.68	1.71	1.66	1.66	1.69	1.67	1.70
Std. Deviation	0.30	0.34	0.34	0.28	0.29	0.27	0.28	0.29	0.29	0.27	0.33	0.27
% spKt/V >= 1.4	88%	89%	84%	90%	91%	91%	93%	83%	87%	91%	84%	91%



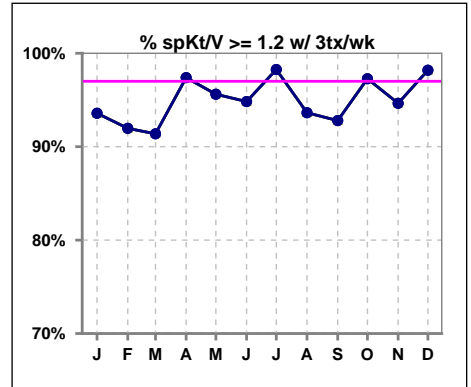
	Jan	Feb	Mar	Apr	May	Jun	Jul	Aug	Sep	Oct	Nov	Dec
# spKt/V w/ 3tx/wk	109	112	116	115	114	116	115	110	111	110	112	110
# spKt/V >= 1.4 w/3tx/wk	96	100	98	103	104	105	107	91	96	100	94	100
Pop. Mean	1.67	1.65	1.64	1.68	1.69	1.68	1.71	1.66	1.66	1.69	1.67	1.70
Std. Deviation	0.29	0.35	0.34	0.28	0.29	0.28	0.28	0.29	0.30	0.27	0.33	0.27
% >= 1.4 w/3tx/wk	88%	89%	84%	90%	91%	91%	93%	83%	86%	91%	84%	91%



	Jan	Feb	Mar	Apr	May	Jun	Jul	Aug	Sep	Oct	Nov	Dec
# spKt/V	112	115	119	117	116	118	117	112	113	112	114	112
# spKt/V >= 1.2	104	105	109	114	111	112	115	105	105	109	108	110
Pop. Mean	1.66	1.64	1.63	1.68	1.69	1.68	1.71	1.66	1.66	1.69	1.67	1.70
Std. Deviation	0.30	0.34	0.34	0.28	0.29	0.27	0.28	0.29	0.29	0.27	0.33	0.27
% >= 1.2	93%	91%	92%	97%	96%	95%	98%	94%	93%	97%	95%	98%

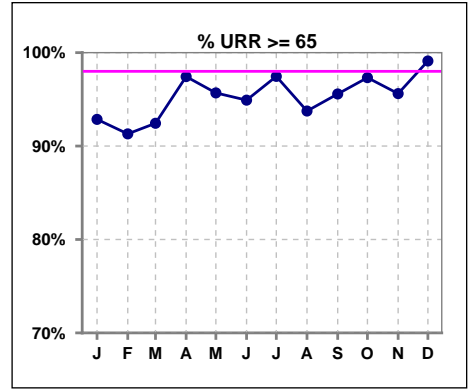


	Jan	Feb	Mar	Apr	May	Jun	Jul	Aug	Sep	Oct	Nov	Dec
# spKt/V w/ 3tx/wk	109	112	116	115	114	116	115	110	111	110	112	110
# spKt/V >= 1.2 w/3tx/wk	102	103	106	112	109	110	113	103	103	107	106	108
Pop. Mean	1.67	1.65	1.64	1.68	1.69	1.68	1.71	1.66	1.66	1.69	1.67	1.70
Std. Deviation	0.29	0.35	0.34	0.28	0.29	0.28	0.28	0.29	0.30	0.27	0.33	0.27
% >= 1.2 w/3tx/wk	94%	92%	91%	97%	96%	95%	98%	94%	93%	97%	95%	98%

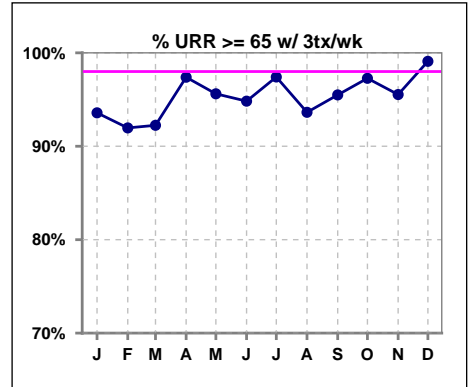


I. ADEQUACY OF DIALYSIS - CONT.

	Jan	Feb	Mar	Apr	May	Jun	Jul	Aug	Sep	Oct	Nov	Dec
# URR	112	115	119	117	116	118	118	112	113	112	114	112
# URR >= 65	104	105	110	114	111	112	115	105	108	109	109	111
Pop. Mean	76	75	75	76	76	76	77	76	76	77	76	77
Std. Deviation	6.22	8.44	8.24	6.93	6.77	5.73	6.72	5.98	6.15	5.22	6.91	5.21
% URR >= 65	93%	91%	92%	97%	96%	95%	97%	94%	96%	97%	96%	99%



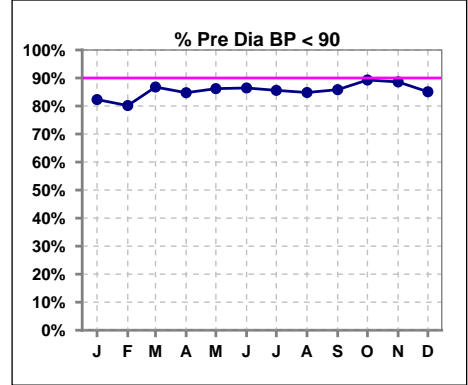
	Jan	Feb	Mar	Apr	May	Jun	Jul	Aug	Sep	Oct	Nov	Dec
# URR w/ 3tx/wk	109	112	116	115	114	116	116	110	111	110	112	110
# URR>=65 w/ 3tx/wk	102	103	107	112	109	110	113	103	106	107	107	109
Pop. Mean	76	75	75	76	76	76	77	76	76	77	76	77
Std. Deviation	5.95	8.49	8.30	6.99	6.83	5.78	6.77	6.01	6.18	5.26	6.96	5.25
% URR>=65 w/ 3tx/wk	94%	92%	92%	97%	96%	95%	97%	94%	95%	97%	96%	99%



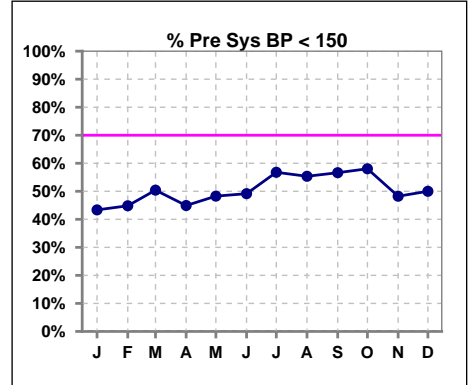
I. ADEQUACY OF DIALYSIS - CONT.

Blood Pressure Control (Pre)

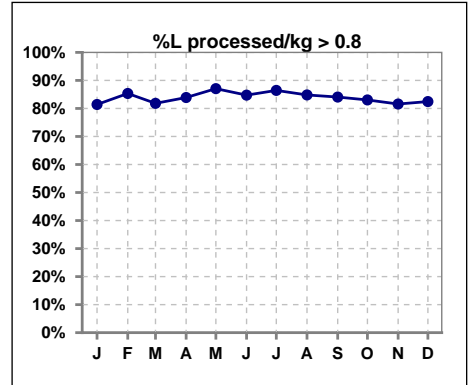
	Jan	Feb	Mar	Apr	May	Jun	Jul	Aug	Sep	Oct	Nov	Dec
# Pre Dia BP	113	116	121	118	116	118	118	112	113	112	114	114
# Pre Dia BP < 90	93	93	105	100	100	102	101	95	97	100	101	97
Pop. Mean	76	77	75	75	75	75	74	74	74	74	75	75
Std. Deviation	14.2	14.0	14.6	14.7	13.6	14.2	13.7	14.8	13.7	13.2	13.3	13.7
% Pre Dia BP < 90	82%	80%	87%	85%	86%	86%	86%	85%	86%	89%	89%	85%



	Jan	Feb	Mar	Apr	May	Jun	Jul	Aug	Sep	Oct	Nov	Dec
# Pre Sys BP	113	116	121	118	116	118	118	112	113	112	114	114
# Pre Sys BP < 150	49	52	61	53	56	58	67	62	64	65	55	57
Pop. Mean	151	150	149	149	148	148	145	145	145	144	148	147
Std. Deviation	23.4	24.3	24.8	24.2	24.2	24.7	23.5	24.8	25.1	24.9	23.2	23.8
%Pre Sys BP <150	43%	45%	50%	45%	48%	49%	57%	55%	57%	58%	48%	50%



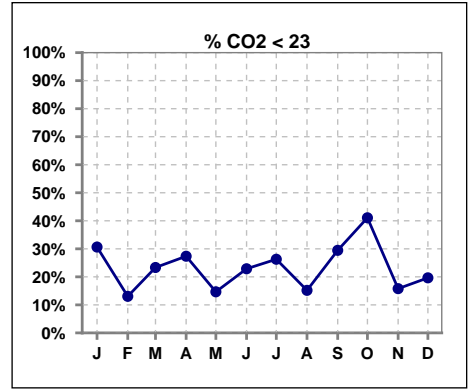
	Jan	Feb	Mar	Apr	May	Jun	Jul	Aug	Sep	Oct	Nov	Dec
# L processed/kg	113	116	121	118	116	118	118	112	113	112	114	114
# L processed/kg>0.8	92	99	99	99	101	100	102	95	95	93	93	94
Pop. Mean	1	1	1	1	1	1	1	1	1	1	1	1
Std. Deviation	0.3	0.3	0.3	0.3	0.3	0.3	0.3	0.3	0.3	0.3	0.3	0.3
% L processed/kg>0.8	81%	85%	82%	84%	87%	85%	86%	85%	84%	83%	82%	82%



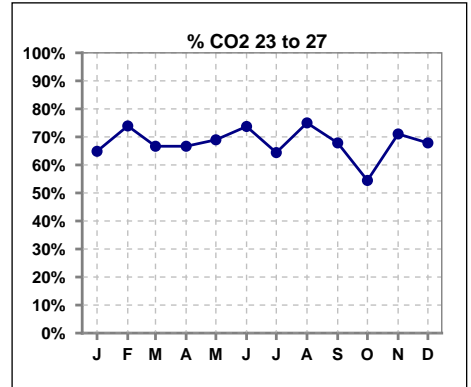
Methodology: a) All labs for 'Adequacy of Dialysis', 'Nutrition', 'Osteodystrophy', 'Anemia' and 'Diabetes' based on last value of month; b) BP's and #L processed are average of all values for month; c) Access data takes last access of month; d) Values for SGA and 'Infection Control' use most recent result.

I. ADEQUACY OF DIALYSIS - CONT.

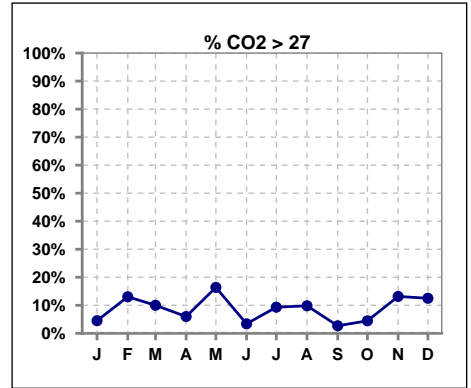
	Jan	Feb	Mar	Apr	May	Jun	Jul	Aug	Sep	Oct	Nov	Dec
# CO2	111	115	120	117	116	118	118	112	112	112	114	112
# CO2 < 23	34	15	28	32	17	27	31	17	33	46	18	22
Pop. Mean	24	25	24	24	25	24	24	25	24	23	25	25
Std. Deviation	2.73	2.24	2.79	2.61	2.69	2.59	2.40	2.23	2.62	2.59	2.79	2.78
% CO2 < 23	31%	13%	23%	27%	15%	23%	26%	15%	29%	41%	16%	20%



	Jan	Feb	Mar	Apr	May	Jun	Jul	Aug	Sep	Oct	Nov	Dec
# CO2	111	115	120	117	116	118	118	112	112	112	114	112
# CO2 23 to 27	72	85	80	78	80	87	76	84	76	61	81	76
Pop. Mean	24	25	24	24	25	24	24	25	24	23	25	25
Std. Deviation	2.73	2.24	2.79	2.61	2.69	2.59	2.40	2.23	2.62	2.59	2.79	2.78
% CO2 23 to 27	65%	74%	67%	67%	69%	74%	64%	75%	68%	54%	71%	68%



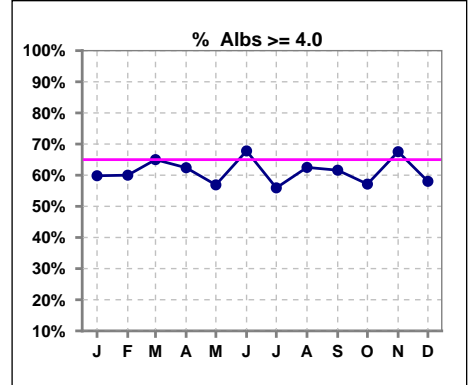
	Jan	Feb	Mar	Apr	May	Jun	Jul	Aug	Sep	Oct	Nov	Dec
# CO2	111	115	120	117	116	118	118	112	112	112	114	112
# CO2 > 27	5	15	12	7	19	4	11	11	3	5	15	14
Pop. Mean	24	25	24	24	25	24	24	25	24	23	25	25
Std. Deviation	2.73	2.24	2.79	2.61	2.69	2.59	2.40	2.23	2.62	2.59	2.79	2.78
% CO2 > 27	5%	13%	10%	6%	16%	3%	9%	10%	3%	4%	13%	13%



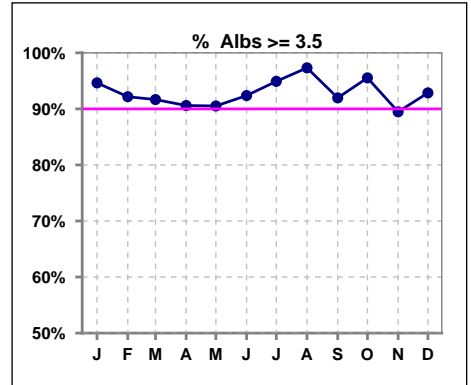
*Albumin values use BCG method - as of July 2001

II. NUTRITION

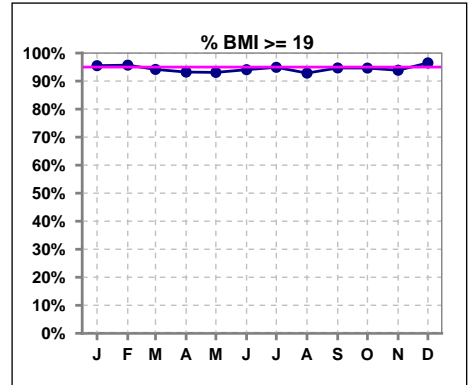
	Jan	Feb	Mar	Apr	May	Jun	Jul	Aug	Sep	Oct	Nov	Dec
# Albumin	112	115	120	117	116	118	118	112	112	112	114	112
# Albumin >= 4.0	67	69	78	73	66	80	66	70	69	64	77	65
Pop. Mean	4.0	4.0	4.0	4.0	4.0	4.0	4.0	4.0	4.0	4.0	4.0	4.0
Std. Deviation	0.36	0.39	0.43	0.43	0.39	0.36	0.29	0.30	0.35	0.32	0.37	0.35
% Alb >= 4.0	60%	60%	65%	62%	57%	68%	56%	63%	62%	57%	68%	58%



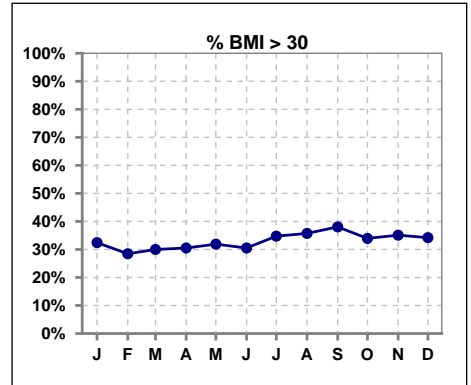
	Jan	Feb	Mar	Apr	May	Jun	Jul	Aug	Sep	Oct	Nov	Dec
# Albumin	112	115	120	117	116	118	118	112	112	112	114	112
# Albumin >= 3.5	106	106	110	106	105	109	112	109	103	107	102	104
Pop. Mean	4.0	4.0	4.0	4.0	4.0	4.0	4.0	4.0	4.0	4.0	4.0	4.0
Std. Deviation	0.36	0.39	0.43	0.43	0.39	0.36	0.29	0.30	0.35	0.32	0.37	0.35
% Alb >= 3.5	95%	92%	92%	91%	91%	92%	95%	97%	92%	96%	89%	93%



	Jan	Feb	Mar	Apr	May	Jun	Jul	Aug	Sep	Oct	Nov	Dec
# BMI	111	116	120	118	116	118	118	112	113	112	114	114
# BMI >= 19	106	111	113	110	108	111	112	104	107	106	107	110
Pop. Mean	28	28	28	28	28	28	29	29	29	28	29	28
Std. Deviation	7.3	7.4	7.5	7.7	7.6	7.8	7.9	7.9	8.1	7.9	7.9	7.7
% BMI >= 19	95%	96%	94%	93%	93%	94%	95%	93%	95%	95%	94%	96%



	Jan	Feb	Mar	Apr	May	Jun	Jul	Aug	Sep	Oct	Nov	Dec
# BMI	111	116	120	118	116	118	118	112	113	112	114	114
# BMI > 30	36	33	36	36	37	36	41	40	43	38	40	39
Pop. Mean	28	28	28	28	28	28	29	29	29	28	29	28
Std. Deviation	7.3	7.4	7.5	7.7	7.6	7.8	7.9	7.9	8.1	7.9	7.9	7.7
% BMI > 30	32%	28%	30%	31%	32%	31%	35%	36%	38%	34%	35%	34%

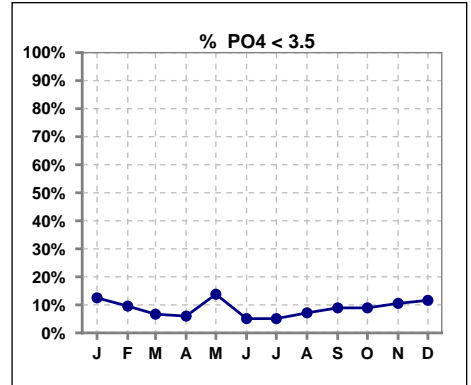


Methodology: a) All labs for 'Adequacy of Dialysis', 'Nutrition', 'Osteodystrophy', 'Anemia' and 'Diabetes' based on last value of month; b) BP's and #L processed are average of all values for month; c) Access data takes last access of month; d) Values for SGA and 'Infection Control' use most recent result.

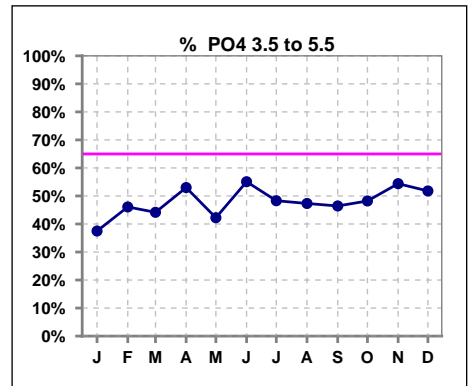
Lab methodology for PTH changed January 2012

III. OSTEODYSTROPHY

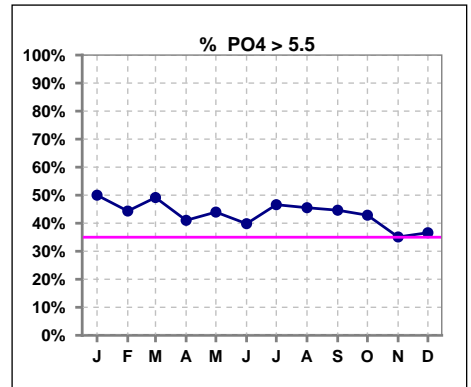
	Jan	Feb	Mar	Apr	May	Jun	Jul	Aug	Sep	Oct	Nov	Dec
# PO4	112	115	120	117	116	118	118	112	112	112	114	112
# PO4 < 3.5	14	11	8	7	16	6	6	8	10	10	12	13
Pop. Mean	5.6	5.4	5.6	5.6	5.5	5.6	5.7	5.7	5.5	5.5	5.2	5.3
Std. Deviation	1.95	1.61	1.60	1.75	1.75	1.56	1.64	1.77	1.74	1.62	1.57	1.73
% PO4 < 3.5	13%	10%	7%	6%	14%	5%	5%	7%	9%	9%	11%	12%



	Jan	Feb	Mar	Apr	May	Jun	Jul	Aug	Sep	Oct	Nov	Dec
# PO4	112	115	120	117	116	118	118	112	112	112	114	112
# PO4 3.5 to 5.5	42	53	53	62	49	65	57	53	52	54	62	58
Pop. Mean	5.6	5.4	5.6	5.6	5.5	5.6	5.7	5.7	5.5	5.5	5.2	5.3
Std. Deviation	1.95	1.61	1.60	1.75	1.75	1.56	1.64	1.77	1.74	1.62	1.57	1.73
% PO4 3.5 to 5.5	38%	46%	44%	53%	42%	55%	48%	47%	46%	48%	54%	52%



	Jan	Feb	Mar	Apr	May	Jun	Jul	Aug	Sep	Oct	Nov	Dec
# PO4	112	115	120	117	116	118	118	112	112	112	114	112
# PO4 > 5.5	56	51	59	48	51	47	55	51	50	48	40	41
Pop. Mean	5.6	5.4	5.6	5.6	5.5	5.6	5.7	5.7	5.5	5.5	5.2	5.3
Std. Deviation	1.95	1.61	1.60	1.75	1.75	1.56	1.64	1.77	1.74	1.62	1.57	1.73
% PO4 > 5.5	50%	44%	49%	41%	44%	40%	47%	46%	45%	43%	35%	37%

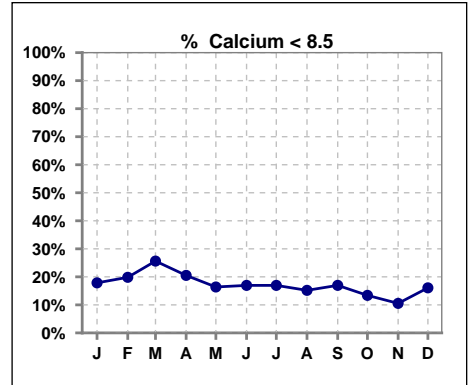


Methodology: a) All labs for 'Adequacy of Dialysis', 'Nutrition', 'Osteodystrophy', 'Anemia' and 'Diabetes' based on last value of month; b) BP's and #L processed are average of all values for month; c) Access data takes last access of month; d) Values for SGA and 'Infection Control' use most recent result.

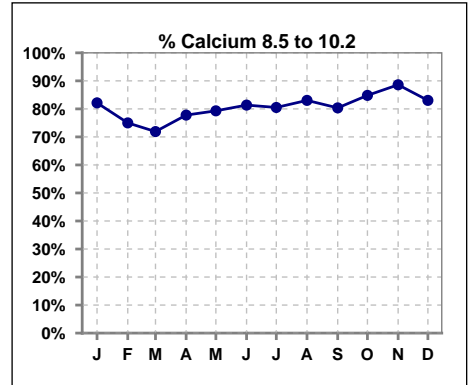
Lab methodology for PTH changed January 2012

III. OSTEODYSTROPHY - CONT.

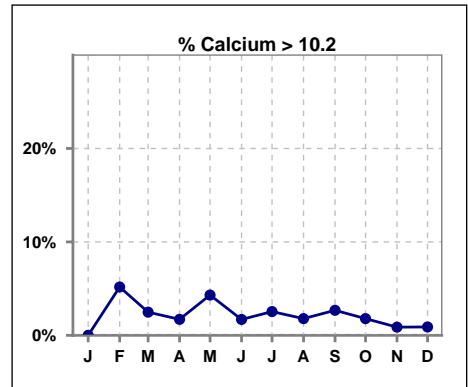
	Jan	Feb	Mar	Apr	May	Jun	Jul	Aug	Sep	Oct	Nov	Dec
# Calcium	112	116	121	117	116	118	118	112	112	112	114	112
# Calcium < 8.5	20	23	31	24	19	20	20	17	19	15	12	18
Pop. Mean	9.0	9.1	8.9	9.0	9.1	9.1	9.0	9.0	9.1	9.1	9.1	9.0
Std. Deviation	0.69	0.73	0.78	0.75	0.70	0.69	0.67	0.63	0.72	0.62	0.61	0.65
% Calcium < 8.5	18%	20%	26%	21%	16%	17%	17%	15%	17%	13%	11%	16%



	Jan	Feb	Mar	Apr	May	Jun	Jul	Aug	Sep	Oct	Nov	Dec
# Calcium	112	116	121	117	116	118	118	112	112	112	114	112
# Calcium 8.5 to 10.2	92	87	87	91	92	96	95	93	90	95	101	93
Pop. Mean	9.0	9.1	8.9	9.0	9.1	9.1	9.0	9.0	9.1	9.1	9.1	9.0
Std. Deviation	0.69	0.73	0.78	0.75	0.70	0.69	0.67	0.63	0.72	0.62	0.61	0.65
% Calcium 8.5 to 10.2	82%	75%	72%	78%	79%	81%	81%	83%	80%	85%	89%	83%



	Jan	Feb	Mar	Apr	May	Jun	Jul	Aug	Sep	Oct	Nov	Dec
# Calcium	112	116	121	117	116	118	118	112	112	112	114	112
# Calcium > 10.2	0	6	3	2	5	2	3	2	3	2	1	1
Pop. Mean	9.0	9.1	8.9	9.0	9.1	9.1	9.0	9.0	9.1	9.1	9.1	9.0
Std. Deviation	0.69	0.73	0.78	0.75	0.70	0.69	0.67	0.63	0.72	0.62	0.61	0.65
% Calcium > 10.2	0%	5%	2%	2%	4%	2%	3%	2%	3%	2%	1%	1%

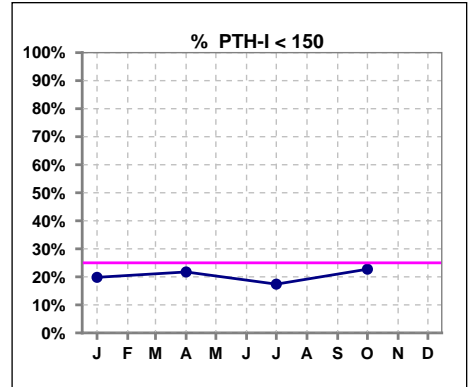


Methodology: a) All labs for 'Adequacy of Dialysis', 'Nutrition', 'Osteodystrophy', 'Anemia' and 'Diabetes' based on last value of month; b) BP's and #L processed are average of all values for month; c) Access data takes last access of month; d) Values for SGA and 'Infection Control' use most recent result.

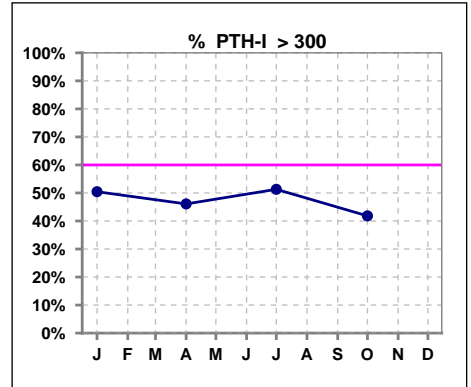
Lab methodology for PTH changed January 2012

III. OSTEODYSTROPHY - CONT.

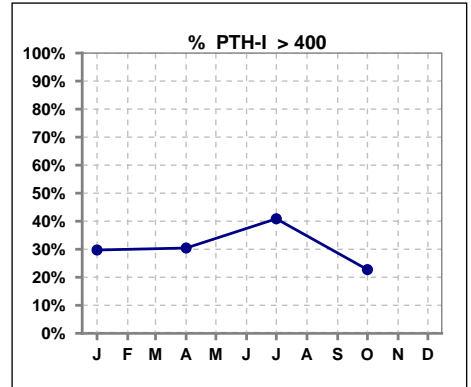
	Jan	Feb	Mar	Apr	May	Jun	Jul	Aug	Sep	Oct	Nov	Dec
# PTH-I	111			115			115			110		
# PTH-I < 150	22			25			20			25		
Pop. Mean	323			342			400			296		
Std. Deviation	190			353			327			197		
% PTH-I < 150	20%			22%			17%			23%		



	Jan	Feb	Mar	Apr	May	Jun	Jul	Aug	Sep	Oct	Nov	Dec
# PTH-I	111			115			115			110		
# PTH-I > 300	56			53			59			46		
Pop. Mean	323			342			400			296		
Std. Deviation	190			353			327			197		
% PTH-I > 300	50%			46%			51%			42%		



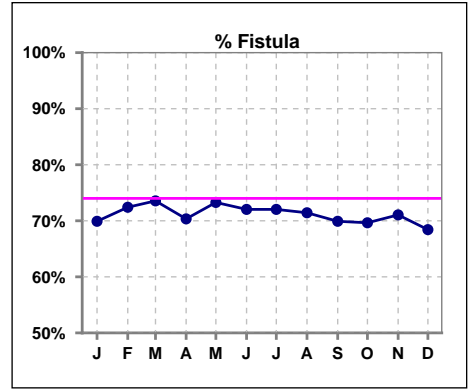
	Jan	Feb	Mar	Apr	May	Jun	Jul	Aug	Sep	Oct	Nov	Dec
# PTH-I	111			115			115			110		
# PTH-I > 400	33			35			47			25		
Pop. Mean	323			342			400			296		
Std. Deviation	190			353			327			197		
% PTH-I > 400	30%			30%			41%			23%		



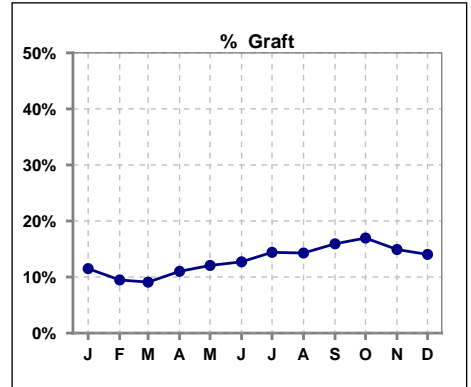
Methodology: a) All labs for 'Adequacy of Dialysis', 'Nutrition', 'Osteodystrophy', 'Anemia' and 'Diabetes' based on last value of month; b) BP's and #L processed are average of all values for month; c) Access data takes last access of month; d) Values for SGA and 'Infection Control' use most recent result.

IV. ACCESS

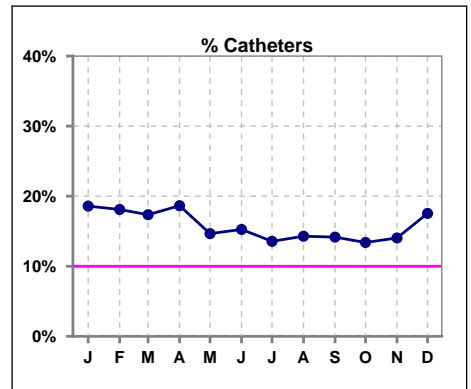
	Jan	Feb	Mar	Apr	May	Jun	Jul	Aug	Sep	Oct	Nov	Dec
# Access	113	116	121	118	116	118	118	112	113	112	114	114
# Fistula	79	84	89	83	85	85	85	80	79	78	81	78
% Fistula	70%	72%	74%	70%	73%	72%	72%	71%	70%	70%	71%	68%



	Jan	Feb	Mar	Apr	May	Jun	Jul	Aug	Sep	Oct	Nov	Dec
# Access	113	116	121	118	116	118	118	112	113	112	114	114
# Graft	13	11	11	13	14	15	17	16	18	19	17	16
% Graft	12%	9%	9%	11%	12%	13%	14%	14%	16%	17%	15%	14%



	Jan	Feb	Mar	Apr	May	Jun	Jul	Aug	Sep	Oct	Nov	Dec
# Access	113	116	121	118	116	118	118	112	113	112	114	114
# Catheters	21	21	21	22	17	18	16	16	16	15	16	20
% Catheters	19%	18%	17%	19%	15%	15%	14%	14%	14%	13%	14%	18%



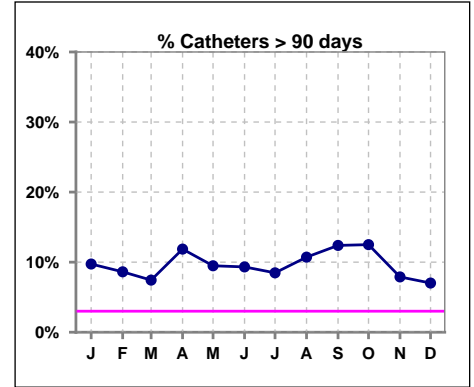
Methodology: a) All labs for 'Adequacy of Dialysis', 'Nutrition', 'Osteodystrophy', 'Anemia' and 'Diabetes' based on last value of month; b) BP's and #L processed are average of all values for month; c) Access data takes last access of month; d) Values for SGA and 'Infection Control' use most recent result.

IV. ACCESS - CONT.

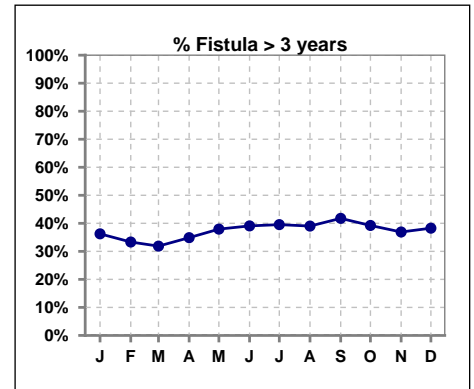
Catheters > 90 days

	Jan	Feb	Mar	Apr	May	Jun	Jul	Aug	Sep	Oct	Nov	Dec
# Access	113	116	121	118	116	118	118	112	113	112	114	114
# Catheters	11	10	9	14	11	11	10	12	14	14	9	8
% Catheters	10%	9%	7%	12%	9%	9%	8%	11%	12%	13%	8%	7%

Definition: Catheter in use on last treatment of the month



	Jan	Feb	Mar	Apr	May	Jun	Jul	Aug	Sep	Oct	Nov	Dec
# Fistula	80	87	91	86	87	87	86	82	79	79	84	81
# Fistula > 3 yrs	29	29	29	30	33	34	34	32	33	31	31	31
% Fistula > 3 yrs	36%	33%	32%	35%	38%	39%	40%	39%	42%	39%	37%	38%



All rates are calculated per 100 patient-month

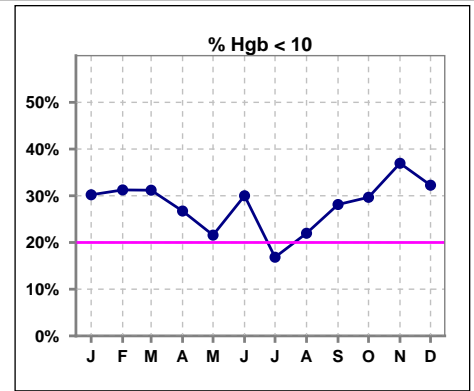
(number of infections/number of accesses x100)

AKC																	
2013-2014	Total	Fistula	Fistula	National	Total	Graft	Graft	National	Total	Cath	Cath	National	Total	Total	All ARB	National	
Month	Fistula	Infected	ARB Rate	Rate	Grafts	Infected	ARB Rate	Rate	Cath	Infected	ARB Rate	Rate	Accesses	Access Infected	Rate Per 100 pt-Months	Rate	
Dec	80	0	0	0.23	17	0	0	0.51	16	0	0	2.55	113	0	0		
Jan	80	0	0	0.23	13	0	0	0.51	21	0	0	2.55	114	0	0		
Feb	83	0	0	0.23	12	0	0	0.51	23	0	0	2.55	118	0	0		
March	86	0	0	0.23	12	0	0	0.51	23	0	0	2.55	121	0	0		
April	83	0	0	0.23	14	0	0	0.51	23	0	0	2.55	120	0	0		
May	85	0	0	0.23	13	0	0	0.51	19	0	0	2.55	117	0	0		
June	88	0	0	0.23	14	0	0	0.51	15	0	0	2.55	117	0	0		
July	88	0	0	0.23	13	0	0	0.51	16	0	0	2.55	117	0	0		
Aug	86	0	0	0.23	15	1	6.6667	0.51	18	0	0	2.55	119	1	0.840		
Sept	78	0	0	0.23	16	0	0	0.51	16	0	0	2.55	110	0	0		
Oct	79	0	0	0.23	19	0	0	0.51	14	0	0	2.55	112	0	0		
Nov	79	0	0	0.23	19	0	0	0.51	12	0	0	2.55	110	0	0		
Annual Total:	995	0	0		177	1	0.565		216	0	0		1388	1	0.072	0.88	

V. ANEMIA

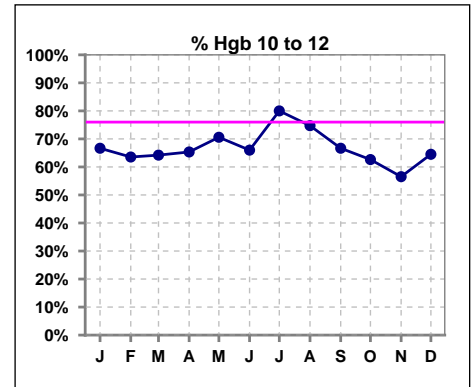
	Jan	Feb	Mar	Apr	May	Jun	Jul	Aug	Sep	Oct	Nov	Dec
# Hgb	96	96	109	101	102	100	95	91	96	91	92	93
# Hgb < 10	29	30	34	27	22	30	16	20	27	27	34	30
Pop. Mean	10.3	10.5	10.4	10.5	10.7	10.5	10.7	10.6	10.5	10.3	10.2	10.2
Std. Deviation	1.0	1.1	1.1	1.1	1.0	0.9	1.0	0.9	1.0	1.4	1.1	1.0
% Hgb < 10	30%	31%	31%	27%	22%	30%	17%	22%	28%	30%	37%	32%

Note: Excludes patients who received no ESA in month.



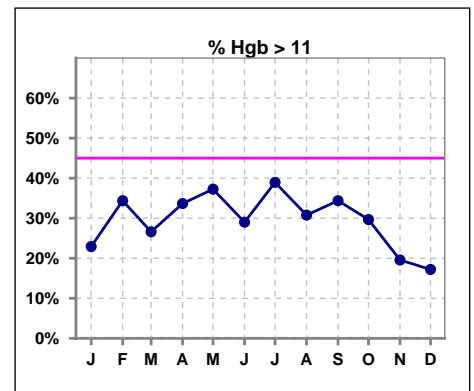
	Jan	Feb	Mar	Apr	May	Jun	Jul	Aug	Sep	Oct	Nov	Dec
# Hgb	96	96	109	101	102	100	95	91	96	91	92	93
# Hgb 10 to 12	64	61	70	66	72	66	76	68	64	57	52	60
Pop. Mean	10.3	10.5	10.4	10.5	10.7	10.5	10.7	10.6	10.5	10.3	10.2	10.2
Std. Deviation	1.0	1.1	1.1	1.1	1.0	0.9	1.0	0.9	1.0	1.4	1.1	1.0
% Hgb 10 to 12	67%	64%	64%	65%	71%	66%	80%	75%	67%	63%	57%	65%

Note: Excludes patients who received no ESA in month.



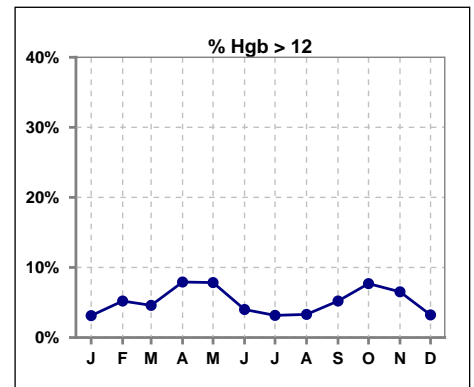
	Jan	Feb	Mar	Apr	May	Jun	Jul	Aug	Sep	Oct	Nov	Dec
# Hgb	96	96	109	101	102	100	95	91	96	91	92	93
# Hgb > 11	22	33	29	34	38	29	37	28	33	27	18	16
Pop. Mean	10.3	10.5	10.4	10.5	10.7	10.5	10.7	10.6	10.5	10.3	10.2	10.2
Std. Deviation	1.0	1.1	1.1	1.1	1.0	0.9	1.0	0.9	1.0	1.4	1.1	1.0
% Hgb > 11	23%	34%	27%	34%	37%	29%	39%	31%	34%	30%	20%	17%

Note: Excludes patients who received no ESA in month.



	Jan	Feb	Mar	Apr	May	Jun	Jul	Aug	Sep	Oct	Nov	Dec
# Hgb	96	96	109	101	102	100	95	91	96	91	92	93
# Hgb > 12	3	5	5	8	8	4	3	3	5	7	6	3
Pop. Mean	10.3	10.5	10.4	10.5	10.7	10.5	10.7	10.6	10.5	10.3	10.2	10.2
Std. Deviation	1.0	1.1	1.1	1.1	1.0	0.9	1.0	0.9	1.0	1.4	1.1	1.0
% Hgb > 12	3%	5%	5%	8%	8%	4%	3%	3%	5%	8%	7%	3%

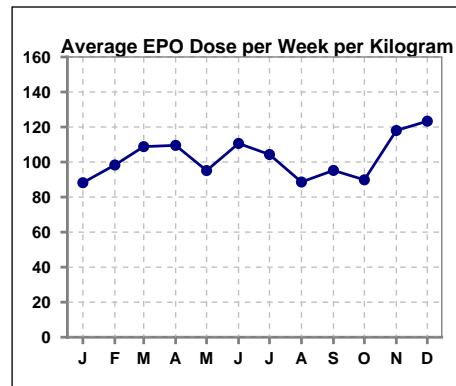
Note: Excludes patients who received no ESA in month.



V. ANEMIA - CONT.

Average EPO Dose per Week per Kilogram

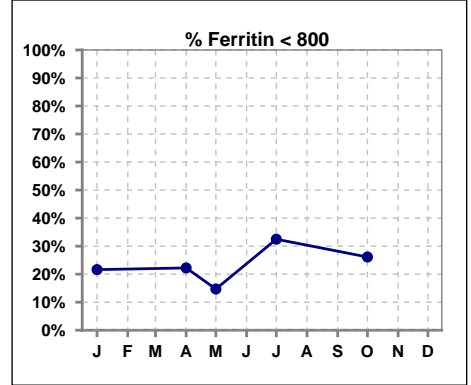
	Jan	Feb	Mar	Apr	May	Jun	Jul	Aug	Sep	Oct	Nov	Dec
# Average EPO	88.2	98.3	108.8	109.5	95.1	110.6	104.3	88.6	95.2	89.9	118.0	123.4



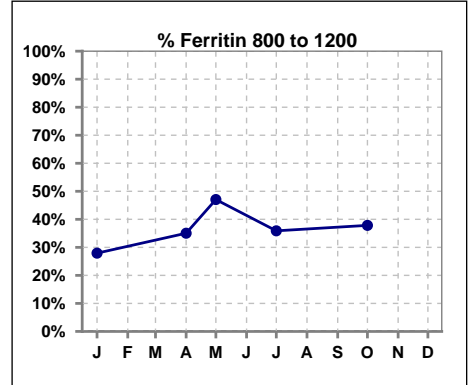
V. ANEMIA - CONT.

Iron Profile

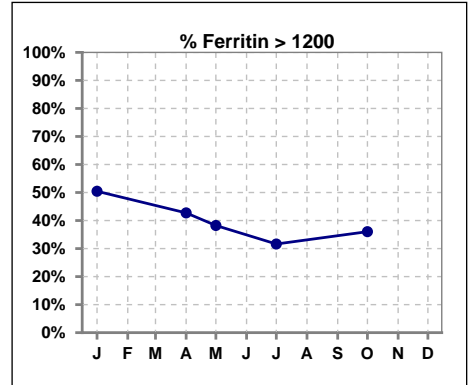
	Jan	Feb	Mar	Apr	May	Jun	Jul	Aug	Sep	Oct	Nov	Dec
# Ferritin	111			117	34		117			111		
# Ferritin < 800	24			26	5		38			29		
Pop. Mean	1191			1142	1176		1016			1111		
Std. Deviation	528			502	481		468			519		
% Ferritin < 800	22%			22%	15%		32%			26%		



	Jan	Feb	Mar	Apr	May	Jun	Jul	Aug	Sep	Oct	Nov	Dec
# Ferritin	111			117	34		117			111		
# Ferritin 800 to 1200	31			41	16		42			42		
Pop. Mean	1191			1142	1176		1016			1111		
Std. Deviation	528			502	481		468			519		
% Ferritin 800 to 1200	28%			35%	47%		36%			38%		



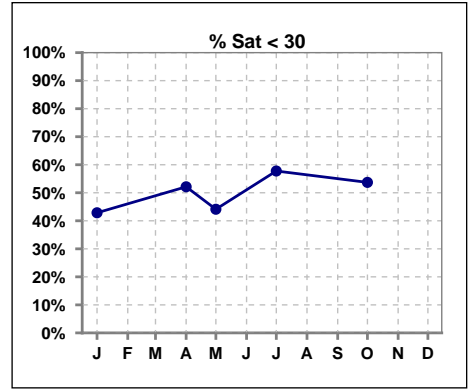
	Jan	Feb	Mar	Apr	May	Jun	Jul	Aug	Sep	Oct	Nov	Dec
# Ferritin	111			117	34		117			111		
# Ferritin > 1200	56			50	13		37			40		
Pop. Mean	1191			1142	1176		1016			1111		
Std. Deviation	528			502	481		468			519		
% Ferritin > 1200	50%			43%	38%		32%			36%		



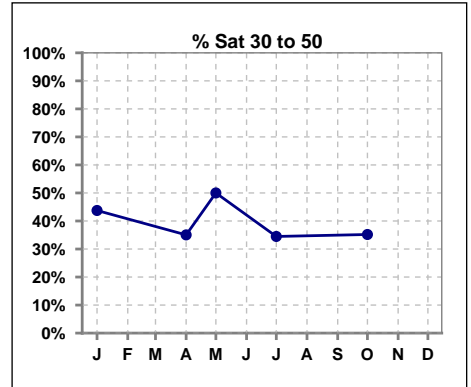
Methodology: a) All labs for 'Adequacy of Dialysis', 'Nutrition', 'Osteodystrophy', 'Anemia' and 'Diabetes' based on last value of month; b) BP's and #L processed are average of all values for month; c) Access data takes last access of month; d) Values for SGA and 'Infection Control' use most recent result.

V. ANEMIA - CONT.

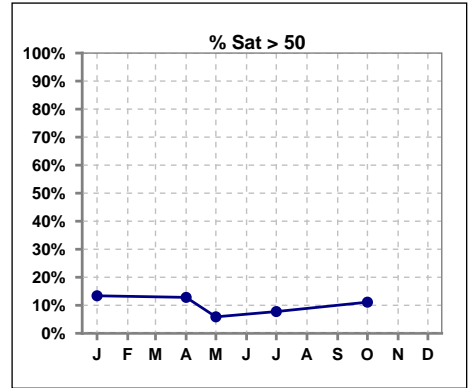
	Jan	Feb	Mar	Apr	May	Jun	Jul	Aug	Sep	Oct	Nov	Dec
# % Sat	112			117	34		116			108		
# % Sat < 30	48			61	15		67			58		
Pop. Mean	35			32	30		30			30		
Std. Deviation	18			17	11		14			15		
%% Sat < 30	43%			52%	44%		58%			54%		



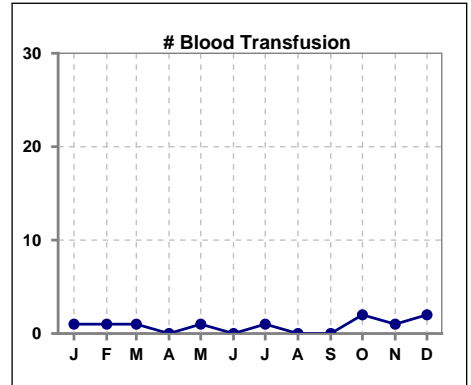
	Jan	Feb	Mar	Apr	May	Jun	Jul	Aug	Sep	Oct	Nov	Dec
# % Sat	112			117	34		116			108		
# % Sat 30 to 50	49			41	17		40			38		
Pop. Mean	35			32	30		30			30		
Std. Deviation	18			17	11		14			15		
%% Sat 30 to 50	44%			35%	50%		34%			35%		



	Jan	Feb	Mar	Apr	May	Jun	Jul	Aug	Sep	Oct	Nov	Dec
# % Sat	112			117	34		116			108		
# % Sat > 50	15			15	2		9			12		
Pop. Mean	35			32	30		30			30		
Std. Deviation	18			17	11		14			15		
%% Sat > 50	13%			13%	6%		8%			11%		



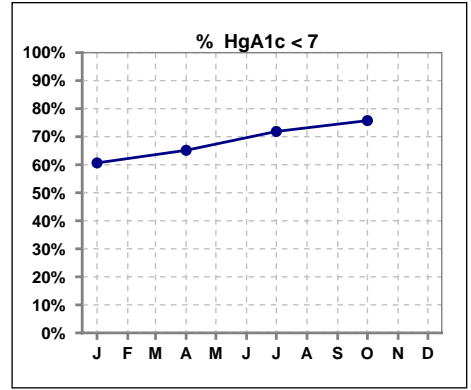
	Jan	Feb	Mar	Apr	May	Jun	Jul	Aug	Sep	Oct	Nov	Dec
# Patient	115	119	123	120	118	120	120	112	114	113	115	114
# Blood Transfusion	1	1	1	0	1	0	1	0	0	2	1	2



Methodology: a) All labs for 'Adequacy of Dialysis', 'Nutrition', 'Osteodystrophy', 'Anemia' and 'Diabetes' based on last value of month; b) BP's and #L processed are average of all values for month; c) Access data takes last access of month; d) Values for SGA and 'Infection Control' use most recent result.

VI. Diabetes

	Jan	Feb	Mar	Apr	May	Jun	Jul	Aug	Sep	Oct	Nov	Dec
# HgA1c	61			66			64			66		
# HgA1c < 7	37			43			46			50		
Pop. Mean	6.6			6.6			6.4			6.4		
Std. Deviation	1.18			1.33			1.39			1.44		
% HgA1c < 7	61%			65%			72%			76%		

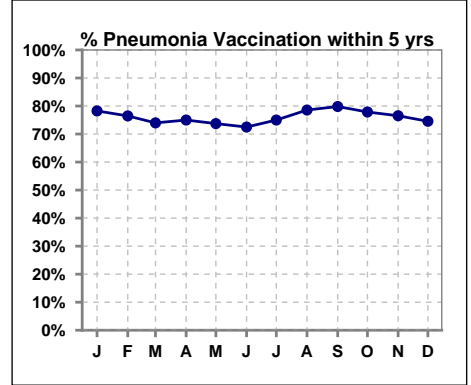


Methodology: a) All labs for 'Adequacy of Dialysis', 'Nutrition', 'Osteodystrophy', 'Anemia' and 'Diabetes' based on last value of month; b) BP's and #L processed are average of all values for month; c) Access data takes last access of month; d) Values for SGA and 'Infection Control' use most recent result.

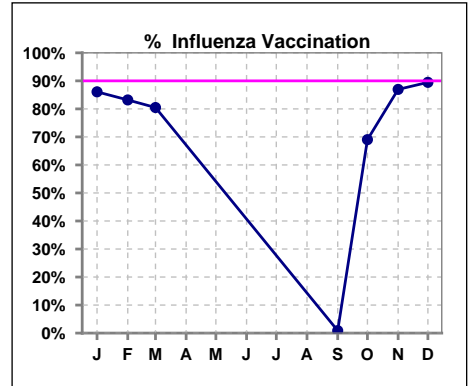
VII. Infection Control

Pneumonia vaccination within the past five years

	Jan	Feb	Mar	Apr	May	Jun	Jul	Aug	Sep	Oct	Nov	Dec
# Patient	115	119	123	120	118	120	120	112	114	113	115	114
# Pneumonia	90	91	91	90	87	87	90	88	91	88	88	85
% Pneumonia	78%	76%	74%	75%	74%	73%	75%	79%	80%	78%	77%	75%



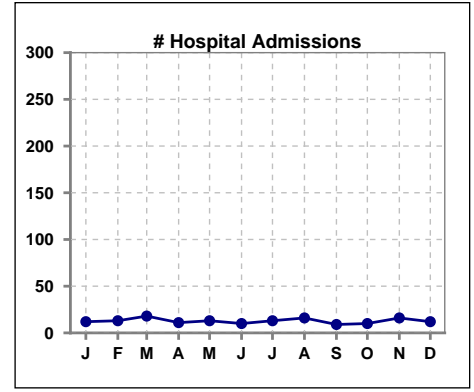
	Jan	Feb	Mar	Apr	May	Jun	Jul	Aug	Sep	Oct	Nov	Dec
# Patient	115	119	123						114	113	115	114
# Influenza	99	99	99						1	78	100	102
% Influenza	86%	83%	80%						1%	69%	87%	89%



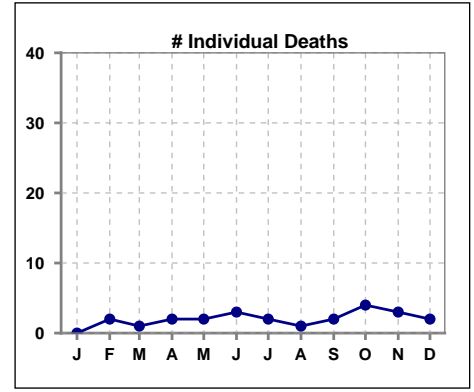
Methodology: a) All labs for 'Adequacy of Dialysis', 'Nutrition', 'Osteodystrophy', 'Anemia' and 'Diabetes' based on last value of month; b) BP's and #L processed are average of all values for month; c) Access data takes last access of month; d) Values for SGA and 'Infection Control' use most recent result.

VIII. Misc

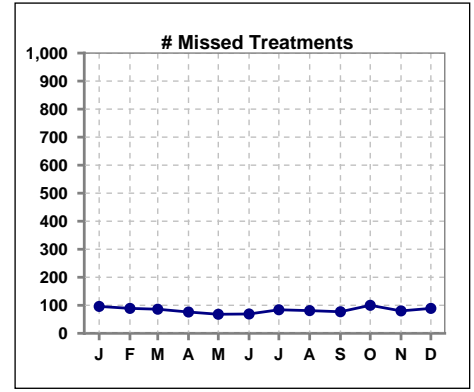
	Jan	Feb	Mar	Apr	May	Jun	Jul	Aug	Sep	Oct	Nov	Dec
# Patient	115	119	123	120	118	120	120	112	114	113	115	114
# Hospital Admissions	12	13	18	11	13	10	13	16	9	10	16	12



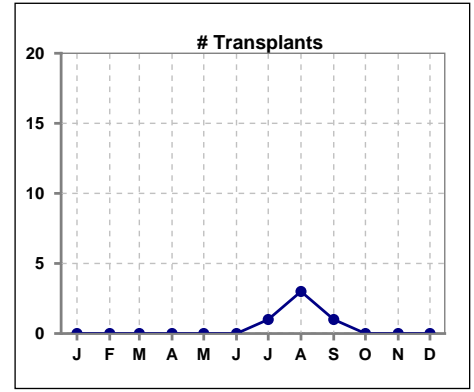
	Jan	Feb	Mar	Apr	May	Jun	Jul	Aug	Sep	Oct	Nov	Dec
# Patient	115	119	123	120	118	120	120	112	114	113	115	114
# Individual Deaths	0	2	1	2	2	3	2	1	2	4	3	2



	Jan	Feb	Mar	Apr	May	Jun	Jul	Aug	Sep	Oct	Nov	Dec
# Patient	115	119	123	120	118	120	120	112	114	113	115	114
# Missed Treatments	96	89	86	76	68	69	84	81	77	100	80	89



	Jan	Feb	Mar	Apr	May	Jun	Jul	Aug	Sep	Oct	Nov	Dec
# Patient	115	119	123	120	118	120	120	112	114	113	115	114
# Transplants	0	0	0	0	0	0	1	3	1	0	0	0



Methodology: a) All labs for 'Adequacy of Dialysis', 'Nutrition', 'Osteodystrophy', 'Anemia' and 'Diabetes' based on last value of month; b) BP's and #L processed are average of all values for month; c) Access data takes last access of month; d) Values for SGA and 'Infection Control' use most recent result.