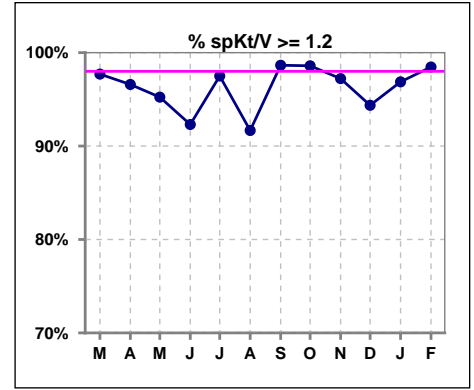
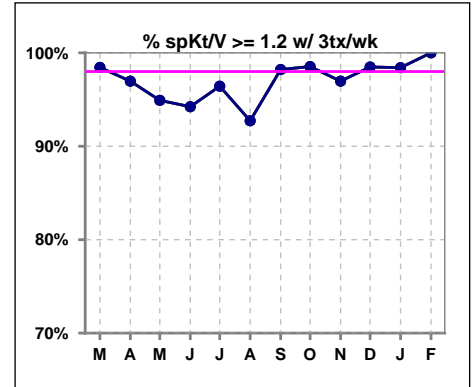


I. ADEQUACY OF DIALYSIS

	Mar	Apr	May	Jun	Jul	Aug	Sep	Oct	Nov	Dec	Jan	Feb
# spKt/V	87	88	84	78	80	72	74	71	72	71	64	65
# spKt/V >= 1.2	85	85	80	72	78	66	73	70	70	67	62	64
Pop. Mean	1.66	1.62	1.63	1.55	1.62	1.55	1.56	1.63	1.59	1.58	1.57	1.55
Std. Deviation	0.29	0.29	0.30	0.27	0.52	0.32	0.26	0.29	0.29	0.30	0.30	0.24
% spKt/V >= 1.2	98%	97%	95%	92%	98%	92%	99%	99%	97%	94%	97%	98%



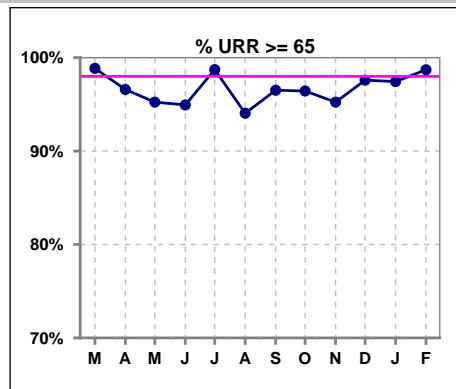
	Mar	Apr	May	Jun	Jul	Aug	Sep	Oct	Nov	Dec	Jan	Feb
# spKt/V w/ 3tx/wk	64	66	59	52	56	55	56	68	66	66	63	63
# spKt/V >= 1.2 w/3tx/wk	63	64	56	49	54	51	55	67	64	65	62	63
Pop. Mean	1.63	1.60	1.61	1.54	1.61	1.55	1.55	1.63	1.60	1.59	1.58	1.56
Std. Deviation	0.27	0.28	0.32	0.27	0.59	0.29	0.27	0.29	0.29	0.28	0.29	0.24
% >= 1.2 w/3tx/wk	98%	97%	95%	94%	96%	93%	98%	99%	97%	98%	98%	100%



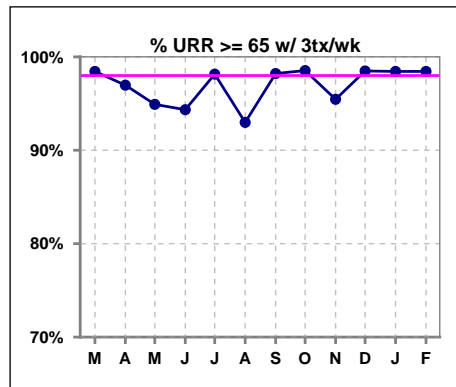
Methodology: a) All labs for 'Adequacy of Dialysis', 'Nutrition', 'Osteodystrophy', 'Anemia' and 'Diabetes' based on last value of month; b) BP's and #L processed are average of all values for month; c) Access data takes last access of month; d) Values for SGA and 'Infection Control' use most recent result.

I. ADEQUACY OF DIALYSIS - CONT.

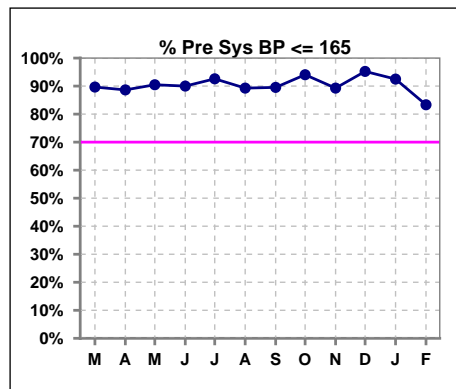
	Mar	Apr	May	Jun	Jul	Aug	Sep	Oct	Nov	Dec	Jan	Feb
# URR	87	88	84	79	78	84	86	84	84	83	78	77
# URR >= 65	86	85	80	75	77	79	83	81	80	81	76	76
Pop. Mean	76	75	75	74	75	74	74	75	74	75	74	74
Std. Deviation	5.53	6.23	6.54	6.42	5.56	7.10	6.37	6.11	6.63	5.90	6.44	4.99
% URR >= 65	99%	97%	95%	95%	99%	94%	97%	96%	95%	98%	97%	99%



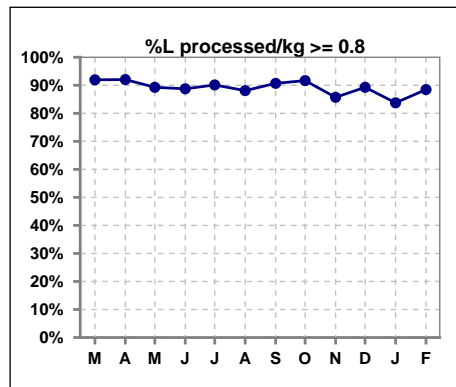
	Mar	Apr	May	Jun	Jul	Aug	Sep	Oct	Nov	Dec	Jan	Feb
# URR w/ 3tx/wk	64	66	59	53	54	57	56	68	66	66	64	64
# URR>=65 w/ 3tx/wk	63	64	56	50	53	53	55	67	63	65	63	63
Pop. Mean	75	75	74	74	74	74	74	75	75	75	74	74
Std. Deviation	5.28	5.70	6.78	6.60	5.32	6.20	5.95	5.55	6.18	5.43	6.52	5.01
% URR>=65 w/ 3tx/wk	98%	97%	95%	94%	98%	93%	98%	99%	95%	98%	98%	98%



	Mar	Apr	May	Jun	Jul	Aug	Sep	Oct	Nov	Dec	Jan	Feb
# Pre Sys BP	87	88	84	80	81	84	86	84	84	84	80	78
# Pre Sys BP <= 165	79	78	77	73	77	75	79	80	78	80	75	68
Pop. Mean	144	143	139	139	136	139	140	140	140	141	141	142
Std. Deviation	17.3	17.3	18.3	18.9	18.0	18.4	17.7	15.8	16.7	17.3	18.1	19.4
% Pre Sys BP <=165	90%	89%	90%	90%	93%	89%	90%	94%	89%	95%	93%	83%



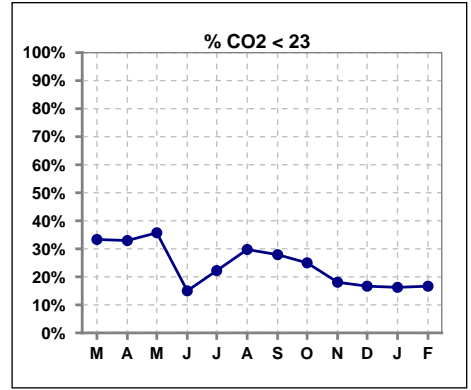
	Mar	Apr	May	Jun	Jul	Aug	Sep	Oct	Nov	Dec	Jan	Feb
# L processed/kg	87	88	84	80	81	84	86	84	84	84	80	78
# L processed/kg>=0.8	80	81	75	71	73	74	78	77	72	75	67	69
Pop. Mean	1	1	1	1	1	1	1	1	1	1	1	1
Std. Deviation	0.3	0.3	0.3	0.3	0.3	0.3	0.3	0.3	0.3	0.3	0.3	0.3
% L processed/kg>=0.8	92%	92%	89%	89%	90%	88%	91%	92%	86%	89%	84%	88%



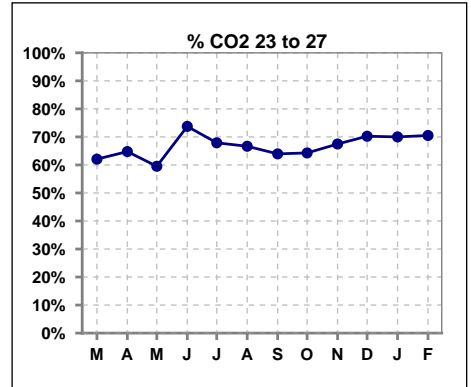
Methodology: a) All labs for 'Adequacy of Dialysis', 'Nutrition', 'Osteodystrophy', 'Anemia' and 'Diabetes' based on last value of month; b) BP's and #L processed are average of all values for month; c) Access data takes last access of month; d) Values for SGA and 'Infection Control' use most recent result.

I. ADEQUACY OF DIALYSIS - CONT.

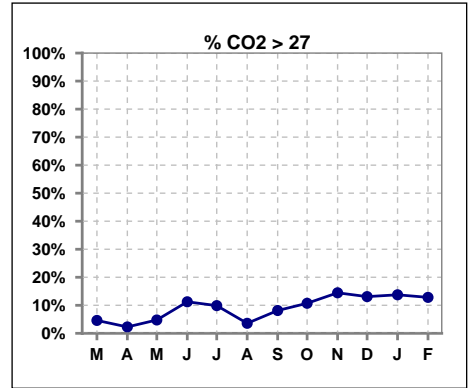
	Mar	Apr	May	Jun	Jul	Aug	Sep	Oct	Nov	Dec	Jan	Feb
# CO2	87	88	84	80	81	84	86	84	83	84	80	78
# CO2 < 23	29	29	30	12	18	25	24	21	15	14	13	13
Pop. Mean	23	23	23	25	25	24	24	24	25	25	25	25
Std. Deviation	2.57	2.30	2.77	2.43	2.66	2.33	3.15	2.50	2.76	2.96	2.55	2.88
% CO2 < 23	33%	33%	36%	15%	22%	30%	28%	25%	18%	17%	16%	17%



	Mar	Apr	May	Jun	Jul	Aug	Sep	Oct	Nov	Dec	Jan	Feb
# CO2	87	88	84	80	81	84	86	84	83	84	80	78
# CO2 23 to 27	54	57	50	59	55	56	55	54	56	59	56	55
Pop. Mean	23	23	23	25	25	24	24	24	25	25	25	25
Std. Deviation	2.57	2.30	2.77	2.43	2.66	2.33	3.15	2.50	2.76	2.96	2.55	2.88
% CO2 23 to 27	62%	65%	60%	74%	68%	67%	64%	64%	67%	70%	70%	71%



	Mar	Apr	May	Jun	Jul	Aug	Sep	Oct	Nov	Dec	Jan	Feb
# CO2	87	88	84	80	81	84	86	84	83	84	80	78
# CO2 > 27	4	2	4	9	8	3	7	9	12	11	11	10
Pop. Mean	23	23	23	25	25	24	24	24	25	25	25	25
Std. Deviation	2.57	2.30	2.77	2.43	2.66	2.33	3.15	2.50	2.76	2.96	2.55	2.88
% CO2 > 27	5%	2%	5%	11%	10%	4%	8%	11%	14%	13%	14%	13%

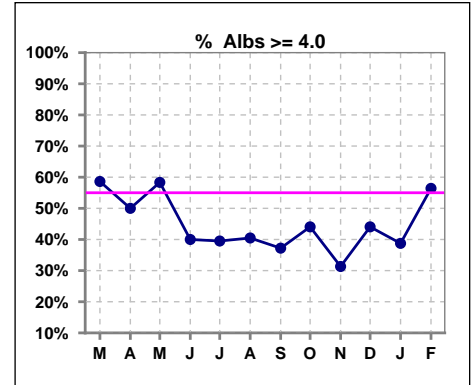


Methodology: a) All labs for 'Adequacy of Dialysis', 'Nutrition', 'Osteodystrophy', 'Anemia' and 'Diabetes' based on last value of month; b) BP's and #L processed are average of all values for month; c) Access data takes last access of month; d) Values for SGA and 'Infection Control' use most recent result.

*Albumin values use BCG method - as of July 2001

II. NUTRITION

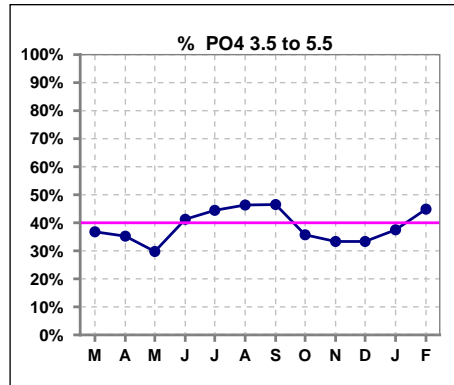
	Mar	Apr	May	Jun	Jul	Aug	Sep	Oct	Nov	Dec	Jan	Feb
# Albumin	87	88	84	80	81	84	86	84	83	84	80	78
# Albumin >= 4.0	51	44	49	32	32	34	32	37	26	37	31	44
Pop. Mean	4.0	4.0	4.0	3.8	3.8	3.8	3.8	3.9	3.8	3.9	3.8	3.9
Std. Deviation	0.34	0.35	0.35	0.39	0.46	0.38	0.36	0.35	0.40	0.45	0.42	0.40
% Alb >= 4.0	59%	50%	58%	40%	40%	40%	37%	44%	31%	44%	39%	56%



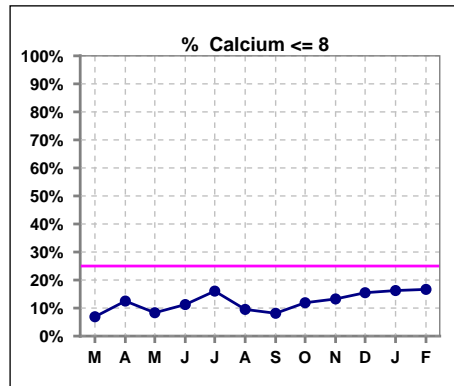
Lab methodology for PTH changed January 2012

III. OSTEODYSTROPHY

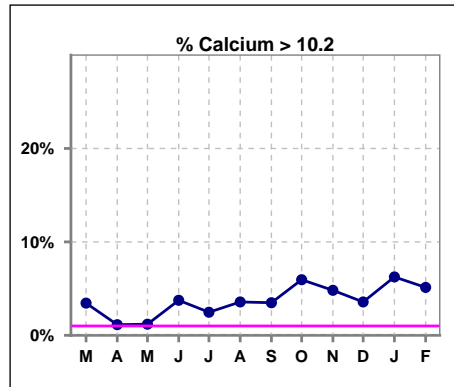
	Mar	Apr	May	Jun	Jul	Aug	Sep	Oct	Nov	Dec	Jan	Feb
# PO4	87	88	84	80	81	82	86	84	84	84	80	78
# PO4 3.5 to 5.5	32	31	25	33	36	38	40	30	28	28	30	35
Pop. Mean	5.9	5.9	5.9	6.0	5.9	5.8	5.8	5.8	6.1	6.3	6.1	5.9
Std. Deviation	2.02	1.73	1.90	1.74	1.93	1.86	2.15	2.00	2.02	2.52	2.01	1.87
% PO4 3.5 to 5.5	37%	35%	30%	41%	44%	46%	47%	36%	33%	33%	38%	45%



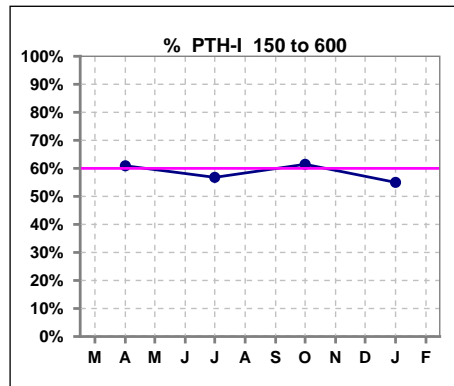
	Mar	Apr	May	Jun	Jul	Aug	Sep	Oct	Nov	Dec	Jan	Feb
# Calcium	87	88	84	80	81	84	86	84	83	84	80	78
# Calcium <= 8	6	11	7	9	13	8	7	10	11	13	13	13
Pop. Mean	9.1	9.1	9.1	8.9	8.8	9.0	9.0	9.0	8.9	8.8	8.9	8.9
Std. Deviation	0.69	0.73	0.75	0.86	0.85	0.85	0.84	0.85	0.79	0.83	0.90	0.86
% Calcium <= 8	7%	13%	8%	11%	16%	10%	8%	12%	13%	15%	16%	17%



	Mar	Apr	May	Jun	Jul	Aug	Sep	Oct	Nov	Dec	Jan	Feb
# Calcium	87	88	84	80	81	84	86	84	83	84	80	78
# Calcium > 10.2	3	1	1	3	2	3	3	5	4	3	5	4
Pop. Mean	9.1	9.1	9.1	8.9	8.8	9.0	9.0	9.0	8.9	8.8	8.9	8.9
Std. Deviation	0.69	0.73	0.75	0.86	0.85	0.85	0.84	0.85	0.79	0.83	0.90	0.86
% Calcium > 10.2	3%	1%	1%	4%	2%	4%	3%	6%	5%	4%	6%	5%



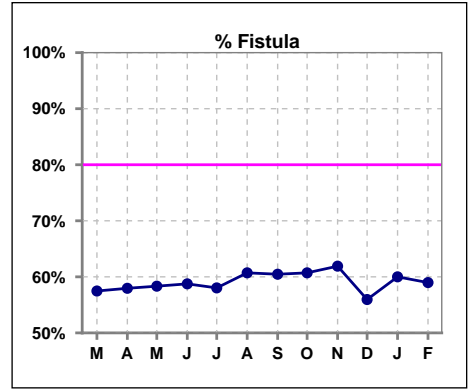
	Mar	Apr	May	Jun	Jul	Aug	Sep	Oct	Nov	Dec	Jan	Feb
# PTH-I		87			81			83			80	
# PTH-I 150 to 600		53			46			51			44	
Pop. Mean		443			539			559			600	
Std. Deviation		262			411			551			578	
% PTH-I 150 to 600		61%			57%			61%			55%	



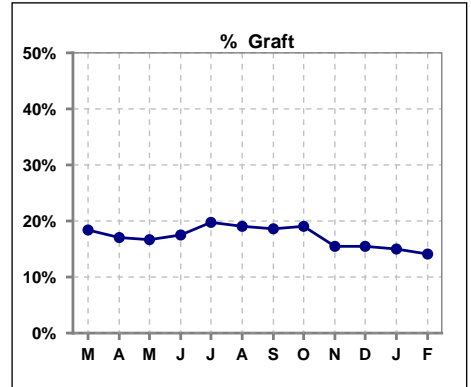
Methodology: a) All labs for 'Adequacy of Dialysis', 'Nutrition', 'Osteodystrophy', 'Anemia' and 'Diabetes' based on last value of month; b) BP's and #L processed are average of all values for month; c) Access data takes last access of month; d) Values for SGA and 'Infection Control' use most recent result.

IV. ACCESS

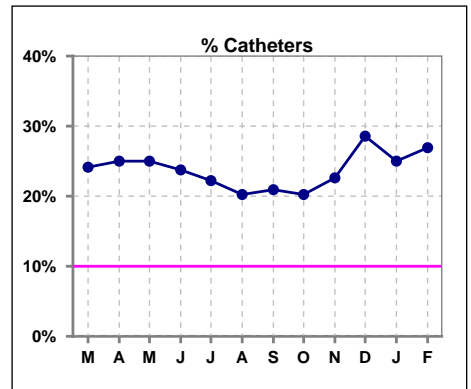
	Mar	Apr	May	Jun	Jul	Aug	Sep	Oct	Nov	Dec	Jan	Feb
# Access	87	88	84	80	81	84	86	84	84	84	80	78
# Fistula	50	51	49	47	47	51	52	51	52	47	48	46
% Fistula	57%	58%	58%	59%	58%	61%	60%	61%	62%	56%	60%	59%



	Mar	Apr	May	Jun	Jul	Aug	Sep	Oct	Nov	Dec	Jan	Feb
# Access	87	88	84	80	81	84	86	84	84	84	80	78
# Graft	16	15	14	14	16	16	16	16	13	13	12	11
% Graft	18%	17%	17%	18%	20%	19%	19%	19%	15%	15%	15%	14%



	Mar	Apr	May	Jun	Jul	Aug	Sep	Oct	Nov	Dec	Jan	Feb
# Access	87	88	84	80	81	84	86	84	84	84	80	78
# Catheters	21	22	21	19	18	17	18	17	19	24	20	21
% Catheters	24%	25%	25%	24%	22%	20%	21%	20%	23%	29%	25%	27%



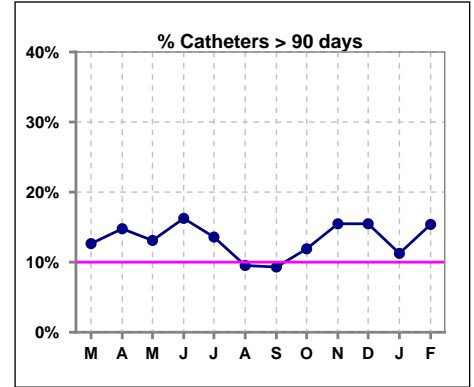
Methodology: a) All labs for 'Adequacy of Dialysis', 'Nutrition', 'Osteodystrophy', 'Anemia' and 'Diabetes' based on last value of month; b) BP's and #L processed are average of all values for month; c) Access data takes last access of month; d) Values for SGA and 'Infection Control' use most recent result.

IV. ACCESS - CONT.

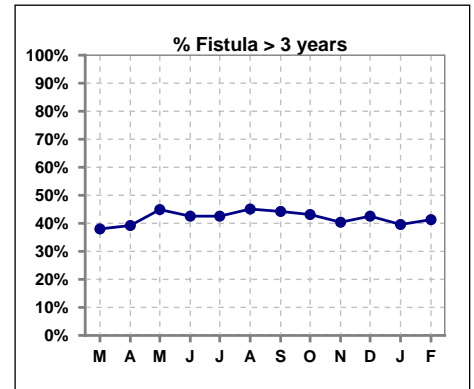
Catheters > 90 days

	Mar	Apr	May	Jun	Jul	Aug	Sep	Oct	Nov	Dec	Jan	Feb
# Access	87	88	84	80	81	84	86	84	84	84	80	78
# Catheters	11	13	11	13	11	8	8	10	13	13	9	12
% Catheters	13%	15%	13%	16%	14%	10%	9%	12%	15%	15%	11%	15%

Definition: Catheter in use on last treatment of the month



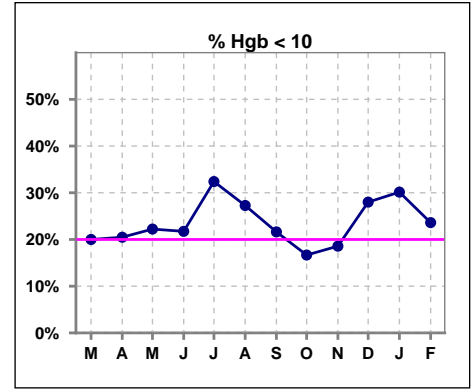
	Mar	Apr	May	Jun	Jul	Aug	Sep	Oct	Nov	Dec	Jan	Feb
# Fistula	50	51	49	47	47	51	52	51	52	47	48	46
# Fistula > 3 yrs	19	20	22	20	20	23	23	22	21	20	19	19
% Fistula > 3 yrs	38%	39%	45%	43%	43%	45%	44%	43%	40%	43%	40%	41%



V. ANEMIA

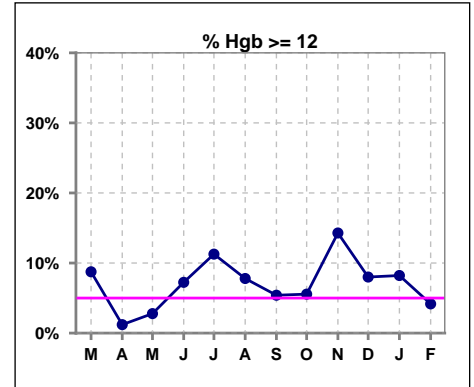
	Mar	Apr	May	Jun	Jul	Aug	Sep	Oct	Nov	Dec	Jan	Feb
# Hgb	80	83	72	69	71	77	74	72	70	75	73	72
# Hgb < 10	16	17	16	15	23	21	16	12	13	21	22	17
Pop. Mean	10.8	10.6	10.6	10.8	10.5	10.6	10.6	10.7	10.8	10.5	10.4	10.6
Std. Deviation	1.1	1.1	1.0	1.2	1.3	1.3	1.1	1.0	1.2	1.4	1.4	1.1
% Hgb < 10	20%	20%	22%	22%	32%	27%	22%	17%	19%	28%	30%	24%

Note: Excludes patients who received no ESA in month.



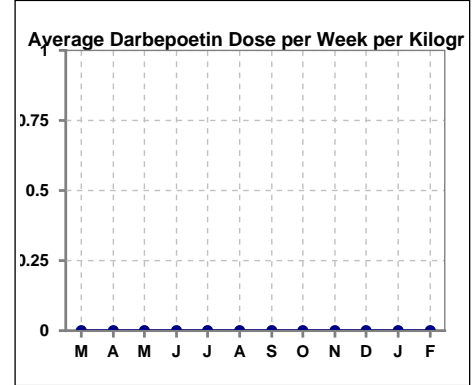
	Mar	Apr	May	Jun	Jul	Aug	Sep	Oct	Nov	Dec	Jan	Feb
# Hgb	80	83	72	69	71	77	74	72	70	75	73	72
# Hgb >= 12	7	1	2	5	8	6	4	4	10	6	6	3
Pop. Mean	10.8	10.6	10.6	10.8	10.5	10.6	10.6	10.7	10.8	10.5	10.4	10.6
Std. Deviation	1.1	1.1	1.0	1.2	1.3	1.3	1.1	1.0	1.2	1.4	1.4	1.1
% Hgb >= 12	9%	1%	3%	7%	11%	8%	5%	6%	14%	8%	8%	4%

Note: Excludes patients who received no ESA in month.



Average Darbepoetin Dose per Week per Kilogram

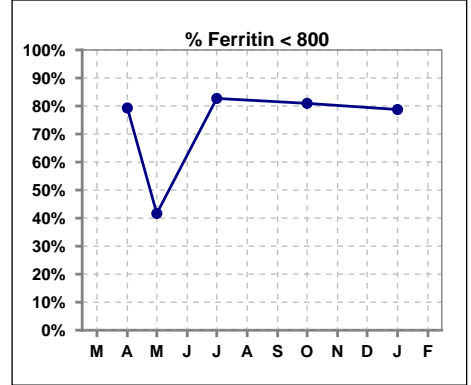
	Mar	Apr	May	Jun	Jul	Aug	Sep	Oct	Nov	Dec	Jan	Feb
# Average Darbepoetin	0	0	0	0	0	0	0	0	0	0	0	0



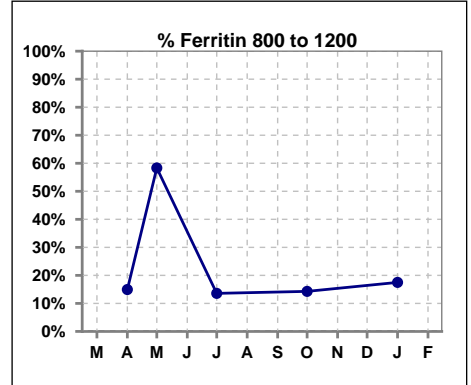
V. ANEMIA - CONT.

Iron Profile

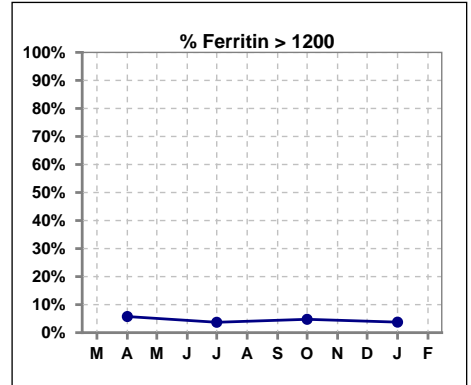
	Mar	Apr	May	Jun	Jul	Aug	Sep	Oct	Nov	Dec	Jan	Feb
# Ferritin		87	12		81			84			80	
# Ferritin < 800		69	5		67			68			63	
Pop. Mean		548	727		503			526			524	
Std. Deviation		372	366		382			355			374	
% Ferritin < 800		79%	42%		83%			81%			79%	



	Mar	Apr	May	Jun	Jul	Aug	Sep	Oct	Nov	Dec	Jan	Feb
# Ferritin		87	12		81			84			80	
# Ferritin 800 to 1200		13	7		11			12			14	
Pop. Mean		548	727		503			526			524	
Std. Deviation		372	366		382			355			374	
% Ferritin 800 to 1200		15%	58%		14%			14%			18%	

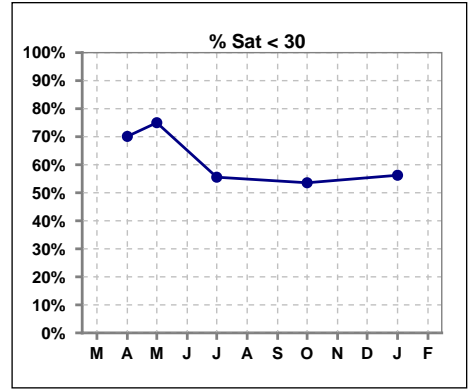


	Mar	Apr	May	Jun	Jul	Aug	Sep	Oct	Nov	Dec	Jan	Feb
# Ferritin		87	12		81			84			80	
# Ferritin > 1200		5			3			4			3	
Pop. Mean		548	727		503			526			524	
Std. Deviation		372	366		382			355			374	
% Ferritin > 1200		6%			4%			5%			4%	

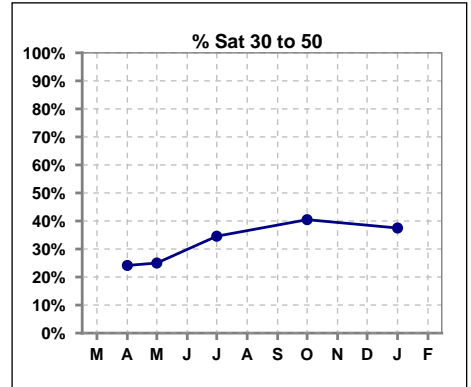


V. ANEMIA - CONT.

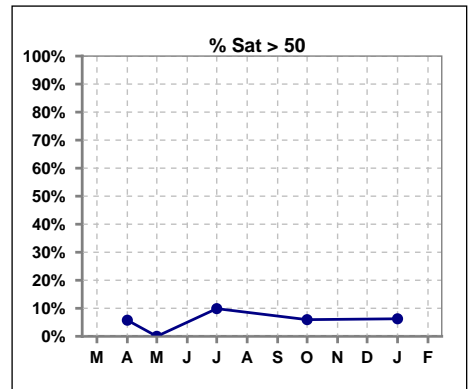
	Mar	Apr	May	Jun	Jul	Aug	Sep	Oct	Nov	Dec	Jan	Feb
# % Sat		87	12		81			84			80	
# % Sat < 30		61	9		45			45			45	
Pop. Mean		27	23		31			30			29	
Std. Deviation		14	10		16			15			13	
% % Sat < 30		70%	75%		56%			54%			56%	



	Mar	Apr	May	Jun	Jul	Aug	Sep	Oct	Nov	Dec	Jan	Feb
# % Sat		87	12		81			84			80	
# % Sat 30 to 50		21	3		28			34			30	
Pop. Mean		27	23		31			30			29	
Std. Deviation		14	10		16			15			13	
% % Sat 30 to 50		24%	25%		35%			40%			38%	



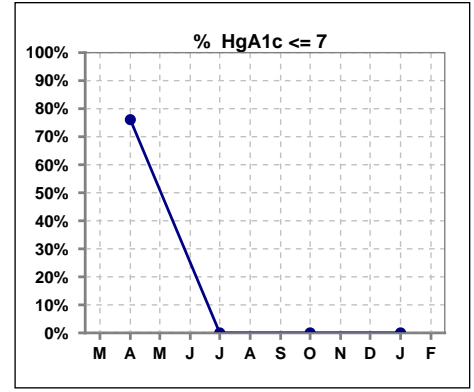
	Mar	Apr	May	Jun	Jul	Aug	Sep	Oct	Nov	Dec	Jan	Feb
# % Sat		87	12		81			84			80	
# % Sat > 50		5	0		8			5			5	
Pop. Mean		27	23		31			30			29	
Std. Deviation		14	10		16			15			13	
% % Sat > 50		6%	0%		10%			6%			6%	



Methodology: a) All labs for 'Adequacy of Dialysis', 'Nutrition', 'Osteodystrophy', 'Anemia' and 'Diabetes' based on last value of month; b) BP's and #L processed are average of all values for month; c) Access data takes last access of month; d) Values for SGA and 'Infection Control' use most recent result.

VI. Diabetes

	Mar	Apr	May	Jun	Jul	Aug	Sep	Oct	Nov	Dec	Jan	Feb
# HgA1c		46			0			0			0	
# HgA1c <= 7		35			0			0			0	
Pop. Mean		6.3			0			0			0	
Std. Deviation		1.55			0			0			0	
% HgA1c <= 7		76%			0%			0%			0%	

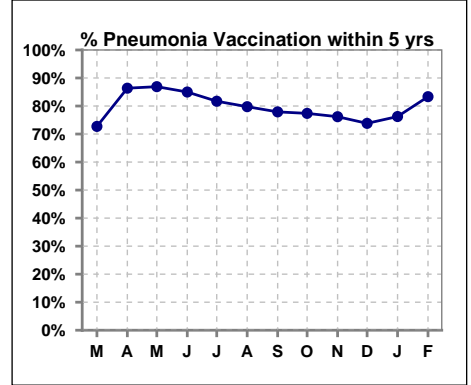


Methodology: a) All labs for 'Adequacy of Dialysis', 'Nutrition', 'Osteodystrophy', 'Anemia' and 'Diabetes' based on last value of month; b) BP's and #L processed are average of all values for month; c) Access data takes last access of month; d) Values for SGA and 'Infection Control' use most recent result.

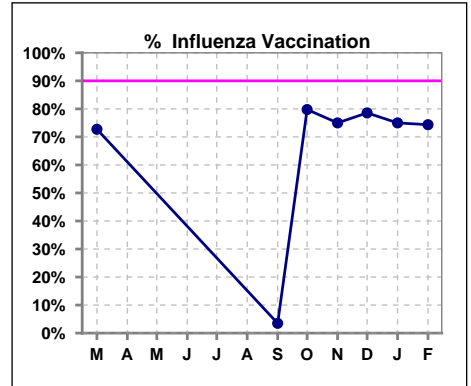
VII. Infection Control

Pneumonia vaccination within the past five years

	Mar	Apr	May	Jun	Jul	Aug	Sep	Oct	Nov	Dec	Jan	Feb
# Patient	88	88	84	80	82	84	86	84	84	84	80	78
# Pneumonia	64	76	73	68	67	67	67	65	64	62	61	65
% Pneumonia	73%	86%	87%	85%	82%	80%	78%	77%	76%	74%	76%	83%



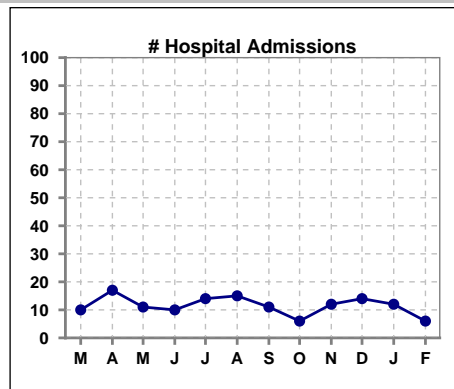
	Mar	Apr	May	Jun	Jul	Aug	Sep	Oct	Nov	Dec	Jan	Feb
# Patient	88						86	84	84	84	80	78
# Influenza	64						3	67	63	66	60	58
% Influenza	73%						3%	80%	75%	79%	75%	74%



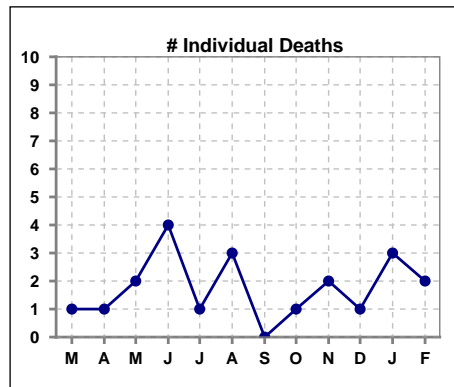
Methodology: a) All labs for 'Adequacy of Dialysis', 'Nutrition', 'Osteodystrophy', 'Anemia' and 'Diabetes' based on last value of month; b) BP's and #L processed are average of all values for month; c) Access data takes last access of month; d) Values for SGA and 'Infection Control' use most recent result.

VIII. Outcome measures

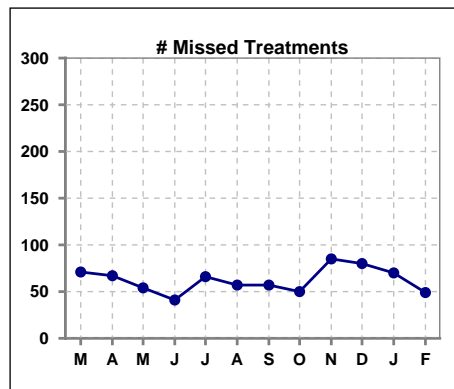
	Mar	Apr	May	Jun	Jul	Aug	Sep	Oct	Nov	Dec	Jan	Feb
# Patient	88	88	84	80	82	84	86	84	84	84	80	78
# Hospital Admissions	10	17	11	10	14	15	11	6	12	14	12	6



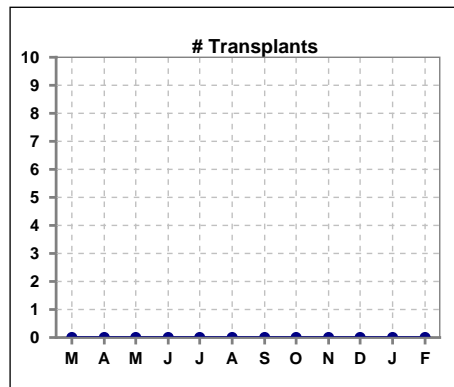
	Mar	Apr	May	Jun	Jul	Aug	Sep	Oct	Nov	Dec	Jan	Feb
# Patient	88	88	84	80	82	84	86	84	84	84	80	78
# Individual Deaths	1	1	2	4	1	3	0	1	2	1	3	2



	Mar	Apr	May	Jun	Jul	Aug	Sep	Oct	Nov	Dec	Jan	Feb
# Patient	88	88	84	80	82	84	86	84	84	84	80	78
# Missed Treatments	71	67	54	41	66	57	57	50	85	80	70	49



	Mar	Apr	May	Jun	Jul	Aug	Sep	Oct	Nov	Dec	Jan	Feb
# Patient	88	88	84	80	82	84	86	84	84	84	80	78
# Transplants	0	0	0	0	0	0	0	0	0	0	0	0



Methodology: a) All labs for 'Adequacy of Dialysis', 'Nutrition', 'Osteodystrophy', 'Anemia' and 'Diabetes' based on last value of month; b) BP's and #L processed are average of all values for month; c) Access data takes last access of month; d) Values for SGA and 'Infection Control' use most recent result.