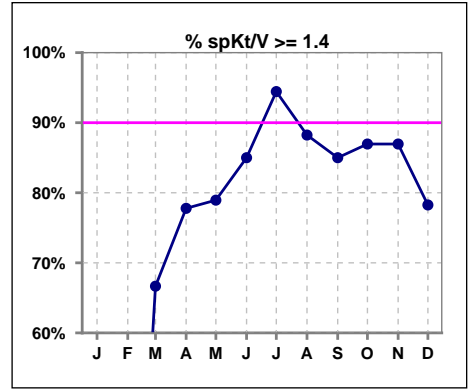
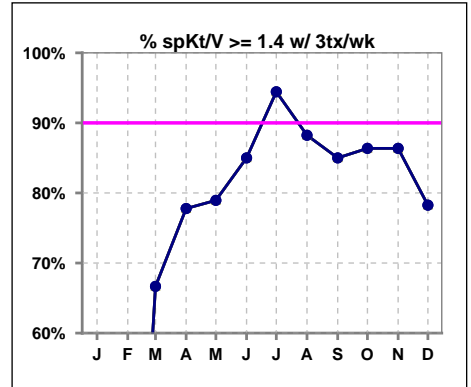


I. ADEQUACY OF DIALYSIS

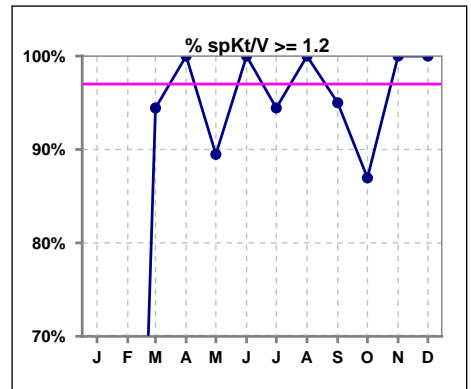
	Jan	Feb	Mar	Apr	May	Jun	Jul	Aug	Sep	Oct	Nov	Dec
# spKt/V	0	0	18	18	19	20	18	17	20	23	23	23
# spKt/V >= 1.4	0	0	12	14	15	17	17	15	17	20	20	18
Pop. Mean	0	0	1.56	1.64	1.59	1.61	1.64	1.57	1.58	1.55	1.70	1.64
Std. Deviation	0	0	0.24	0.26	0.28	0.21	0.25	0.18	0.27	0.34	0.25	0.27
% spKt/V >= 1.4	0%	0%	67%	78%	79%	85%	94%	88%	85%	87%	87%	78%



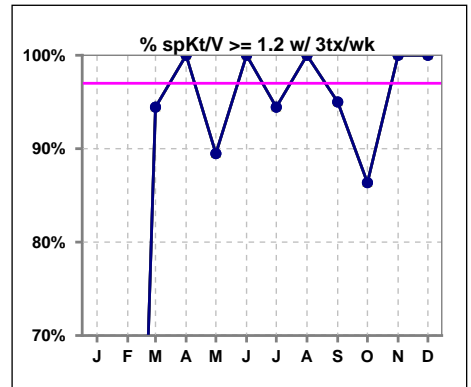
	Jan	Feb	Mar	Apr	May	Jun	Jul	Aug	Sep	Oct	Nov	Dec
# spKt/V w/ 3tx/wk	0	0	18	18	19	20	18	17	20	22	22	23
# spKt/V >= 1.4 w/3tx/wk	0	0	12	14	15	17	17	15	17	19	19	18
Pop. Mean	0	0	1.56	1.64	1.59	1.61	1.64	1.57	1.58	1.56	1.70	1.64
Std. Deviation	0	0	0.24	0.26	0.28	0.21	0.25	0.18	0.27	0.35	0.25	0.27
% >= 1.4 w/3tx/wk	0%	0%	67%	78%	79%	85%	94%	88%	85%	86%	86%	78%



	Jan	Feb	Mar	Apr	May	Jun	Jul	Aug	Sep	Oct	Nov	Dec
# spKt/V	0	0	18	18	19	20	18	17	20	23	23	23
# spKt/V >= 1.2	0	0	17	18	17	20	17	17	19	20	23	23
Pop. Mean	0	0	1.56	1.64	1.59	1.61	1.64	1.57	1.58	1.55	1.70	1.64
Std. Deviation	0	0	0.24	0.26	0.28	0.21	0.25	0.18	0.27	0.34	0.25	0.27
% spKt/V >= 1.2	0%	0%	94%	100%	89%	100%	94%	100%	95%	87%	100%	100%



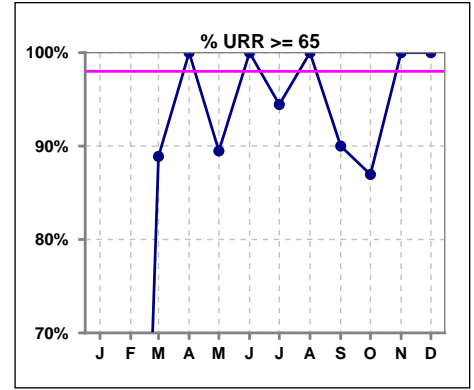
	Jan	Feb	Mar	Apr	May	Jun	Jul	Aug	Sep	Oct	Nov	Dec
# spKt/V w/ 3tx/wk	0	0	18	18	19	20	18	17	20	22	22	23
# spKt/V >= 1.2 w/3tx/wk	0	0	17	18	17	20	17	17	19	19	22	23
Pop. Mean	0	0	1.56	1.64	1.59	1.61	1.64	1.57	1.58	1.56	1.70	1.64
Std. Deviation	0	0	0.24	0.26	0.28	0.21	0.25	0.18	0.27	0.35	0.25	0.27
% >= 1.2 w/3tx/wk	0%	0%	94%	100%	89%	100%	94%	100%	95%	86%	100%	100%



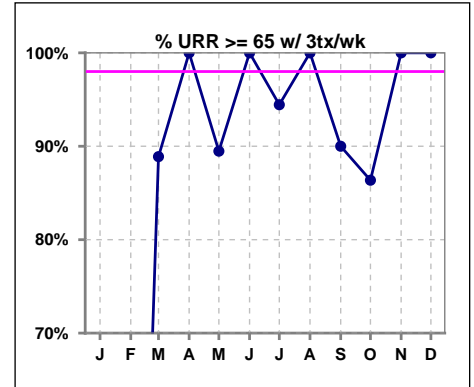
Methodology: a) All labs for 'Adequacy of Dialysis', 'Nutrition', 'Osteodystrophy', 'Anemia' and 'Diabetes' based on last value of month; b) BP's and #L processed are average of all values for month; c) Access data takes last access of month; d) Values for SGA and 'Infection Control' use most recent result.

I. ADEQUACY OF DIALYSIS - CONT.

	Jan	Feb	Mar	Apr	May	Jun	Jul	Aug	Sep	Oct	Nov	Dec
# URR	0	0	18	18	19	20	18	17	20	23	23	23
# URR >= 65	0	0	16	18	17	20	17	17	18	20	23	23
Pop. Mean	0	0	74	76	75	75	76	75	73	73	77	76
Std. Deviation	0	0	5.38	4.72	6.51	4.06	5.01	3.23	8.15	9.97	4.88	5.13
% URR >= 65	0%	0%	89%	100%	89%	100%	94%	100%	90%	87%	100%	100%



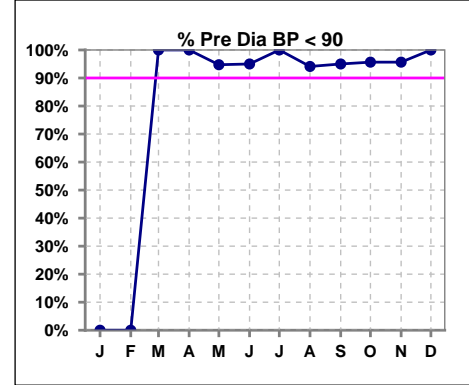
	Jan	Feb	Mar	Apr	May	Jun	Jul	Aug	Sep	Oct	Nov	Dec
# URR w/ 3tx/wk	0	0	18	18	19	20	18	17	20	22	22	23
# URR>=65 w/ 3tx/wk	0	0	16	18	17	20	17	17	18	19	22	23
Pop. Mean	0	0	74	76	75	75	76	75	73	73	76	76
Std. Deviation	0	0	5.38	4.72	6.51	4.06	5.01	3.23	8.15	10.20	4.98	5.13
% URR>=65 w/ 3tx/wk	0%	0%	89%	100%	89%	100%	94%	100%	90%	86%	100%	100%



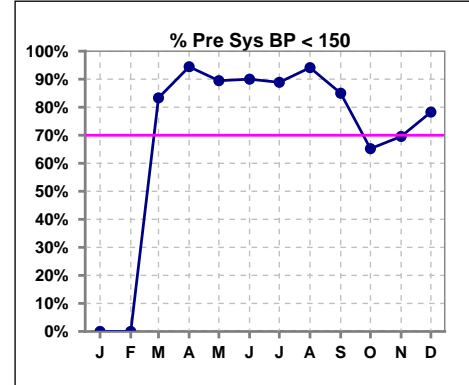
I. ADEQUACY OF DIALYSIS - CONT.

Blood Pressure Control (Pre)

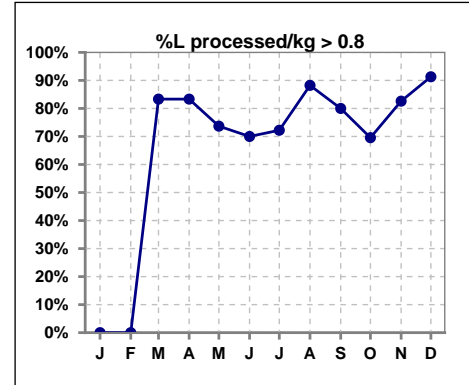
	Jan	Feb	Mar	Apr	May	Jun	Jul	Aug	Sep	Oct	Nov	Dec
# Pre Dia BP	0	0	18	18	19	20	18	17	20	23	23	23
# Pre Dia BP < 90	0	0	18	18	18	19	18	16	19	22	22	23
Pop. Mean	0	0	65	62	66	65	63	63	67	69	67	67
Std. Deviation	0	0	12.4	13.5	15.3	13.6	14.5	15.8	14.1	15.5	15.2	14.5
% Pre Dia BP < 90	0%	0%	100%	100%	95%	95%	100%	94%	95%	96%	96%	100%



	Jan	Feb	Mar	Apr	May	Jun	Jul	Aug	Sep	Oct	Nov	Dec
# Pre Sys BP	0	0	18	18	19	20	18	17	20	23	23	23
# Pre Sys BP < 150	0	0	15	17	17	18	16	16	17	15	16	18
Pop. Mean	0	0	127	123	126	126	123	122	127	135	133	132
Std. Deviation	0	0	20.4	17.1	15.7	18.2	20.1	19.9	20.1	24.0	23.2	22.2
%Pre Sys BP <150	0%	0%	83%	94%	89%	90%	89%	94%	85%	65%	70%	78%

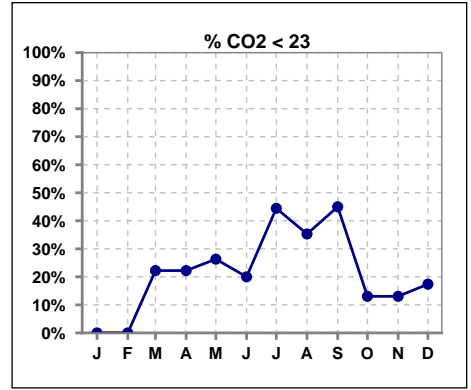


	Jan	Feb	Mar	Apr	May	Jun	Jul	Aug	Sep	Oct	Nov	Dec
# L processed/kg	0	0	18	18	19	20	18	17	20	23	23	23
# L processed/kg>0.8	0	0	15	15	14	14	13	15	16	16	19	21
Pop. Mean	0	0	1	1	1	1	1	1	1	1	1	1
Std. Deviation	0	0	0.3	0.3	0.3	0.3	0.2	0.2	0.2	0.3	0.2	0.2
% L processed/kg>0.8	0%	0%	83%	83%	74%	70%	72%	88%	80%	70%	83%	91%

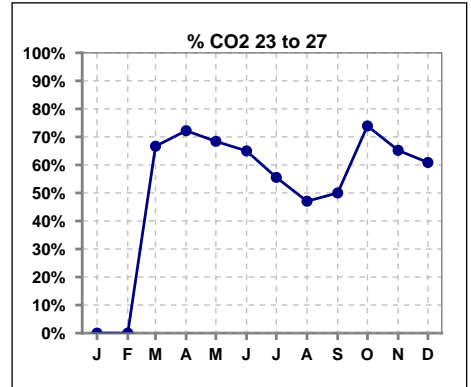


I. ADEQUACY OF DIALYSIS - CONT.

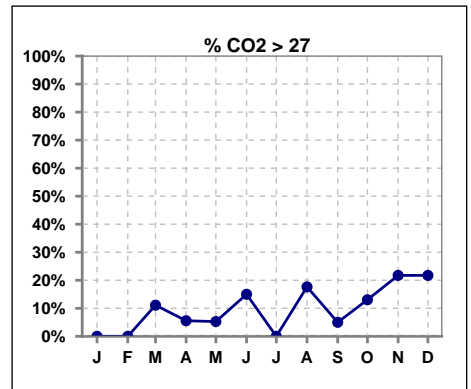
	Jan	Feb	Mar	Apr	May	Jun	Jul	Aug	Sep	Oct	Nov	Dec
# CO2	0	0	18	18	19	20	18	17	20	23	23	23
# CO2 < 23	0	0	4	4	5	4	8	6	9	3	3	4
Pop. Mean	0	0	24	24	24	25	23	24	23	25	26	25
Std. Deviation	0	0	2.92	1.99	2.82	3.11	1.79	3.44	3.21	2.68	2.85	2.82
% CO2 < 23	0%	0%	22%	22%	26%	20%	44%	35%	45%	13%	13%	17%



	Jan	Feb	Mar	Apr	May	Jun	Jul	Aug	Sep	Oct	Nov	Dec
# CO2	0	0	18	18	19	20	18	17	20	23	23	23
# CO2 23 to 27	0	0	12	13	13	13	10	8	10	17	15	14
Pop. Mean	0	0	24	24	24	25	23	24	23	25	26	25
Std. Deviation	0	0	2.92	1.99	2.82	3.11	1.79	3.44	3.21	2.68	2.85	2.82
% CO2 23 to 27	0%	0%	67%	72%	68%	65%	56%	47%	50%	74%	65%	61%



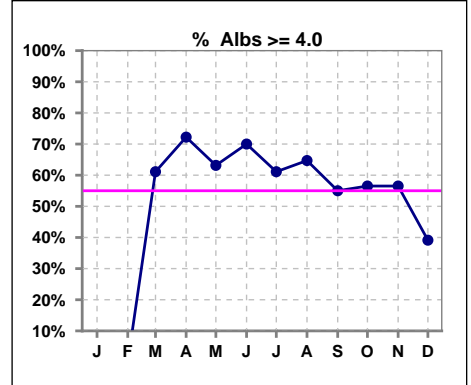
	Jan	Feb	Mar	Apr	May	Jun	Jul	Aug	Sep	Oct	Nov	Dec
# CO2	0	0	18	18	19	20	18	17	20	23	23	23
# CO2 > 27	0	0	2	1	1	3	0	3	1	3	5	5
Pop. Mean	0	0	24	24	24	25	23	24	23	25	26	25
Std. Deviation	0	0	2.92	1.99	2.82	3.11	1.79	3.44	3.21	2.68	2.85	2.82
% CO2 > 27	0%	0%	11%	6%	5%	15%	0%	18%	5%	13%	22%	22%



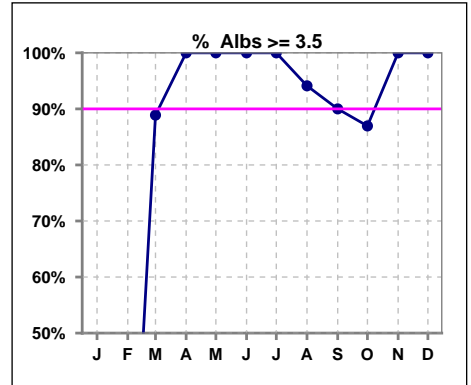
*Albumin values use BCG method - as of July 2001

II. NUTRITION

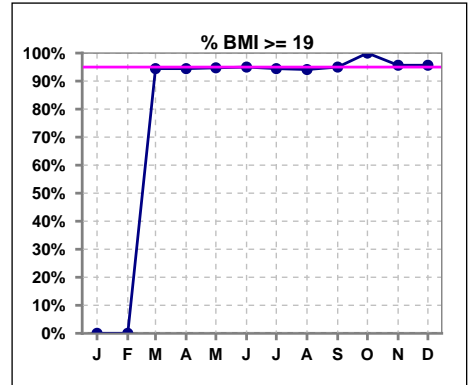
	Jan	Feb	Mar	Apr	May	Jun	Jul	Aug	Sep	Oct	Nov	Dec
# Albumin	0	0	18	18	19	20	18	17	20	23	23	23
# Albumin >= 4.0	0	0	11	13	12	14	11	11	11	13	13	9
Pop. Mean	0	0	3.9	4.0	4.1	4.0	4.0	4.0	3.9	4.0	4.0	4.0
Std. Deviation	0	0	0.36	0.26	0.27	0.25	0.23	0.35	0.50	0.42	0.32	0.31
% Alb >= 4.0	0%	0%	61%	72%	63%	70%	61%	65%	55%	57%	57%	39%



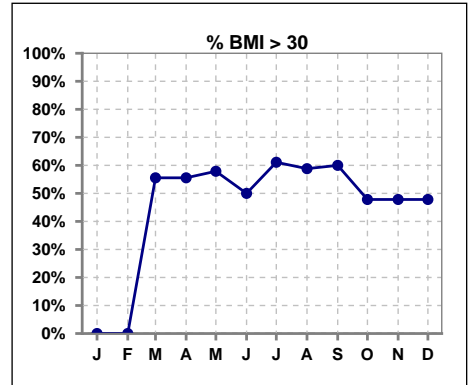
	Jan	Feb	Mar	Apr	May	Jun	Jul	Aug	Sep	Oct	Nov	Dec
# Albumin	0	0	18	18	19	20	18	17	20	23	23	23
# Albumin >= 3.5	0	0	16	18	19	20	18	16	18	20	23	23
Pop. Mean	0	0	3.9	4.0	4.1	4.0	4.0	4.0	3.9	4.0	4.0	4.0
Std. Deviation	0	0	0.36	0.26	0.27	0.25	0.23	0.35	0.50	0.42	0.32	0.31
% Alb >= 3.5	0%	0%	89%	100%	100%	100%	100%	94%	90%	87%	100%	100%



	Jan	Feb	Mar	Apr	May	Jun	Jul	Aug	Sep	Oct	Nov	Dec
# BMI	0	0	18	18	19	20	18	17	20	23	23	23
# BMI >= 19	0	0	17	17	18	19	17	16	19	23	22	22
Pop. Mean	0	0	31	30	31	30	31	31	32	32	31	31
Std. Deviation	0	0	8.4	8.5	7.7	7.7	7.7	7.7	7.6	9.4	8.3	8.4
% BMI >= 19	0%	0%	94%	94%	95%	95%	94%	94%	95%	100%	96%	96%



	Jan	Feb	Mar	Apr	May	Jun	Jul	Aug	Sep	Oct	Nov	Dec
# BMI	0	0	18	18	19	20	18	17	20	23	23	23
# BMI > 30	0	0	10	10	11	10	11	10	12	11	11	11
Pop. Mean	0	0	31	30	31	30	31	31	32	32	31	31
Std. Deviation	0	0	8.4	8.5	7.7	7.7	7.7	7.7	7.6	9.4	8.3	8.4
% BMI > 30	0%	0%	56%	56%	58%	50%	61%	59%	60%	48%	48%	48%

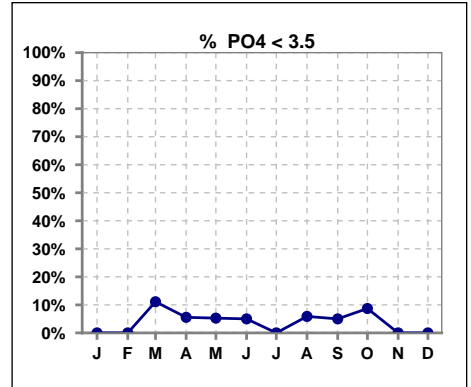


Methodology: a) All labs for 'Adequacy of Dialysis', 'Nutrition', 'Osteodystrophy', 'Anemia' and 'Diabetes' based on last value of month; b) BP's and #L processed are average of all values for month; c) Access data takes last access of month; d) Values for SGA and 'Infection Control' use most recent result.

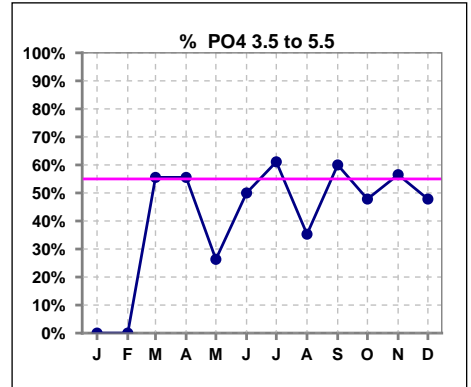
Lab methodology for PTH changed January 2012

III. OSTEODYSTROPHY

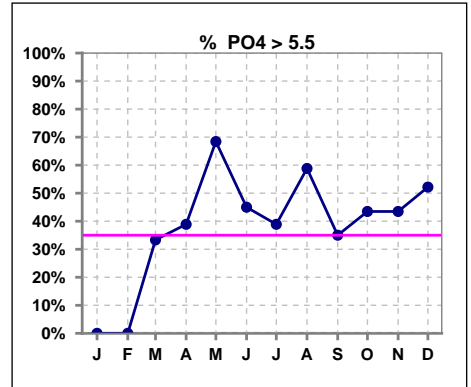
	Jan	Feb	Mar	Apr	May	Jun	Jul	Aug	Sep	Oct	Nov	Dec
# PO4	0	0	18	18	19	20	18	17	20	23	23	23
# PO4 < 3.5	0	0	2	1	1	1	0	1	1	2	0	0
Pop. Mean	0	0	5.2	5.2	5.8	5.8	5.8	5.7	5.2	5.4	5.6	5.7
Std. Deviation	0	0	1.69	1.41	1.18	1.51	1.51	1.43	1.09	1.50	1.55	1.01
% PO4 < 3.5	0%	0%	11%	6%	5%	5%	0%	6%	5%	9%	0%	0%



	Jan	Feb	Mar	Apr	May	Jun	Jul	Aug	Sep	Oct	Nov	Dec
# PO4	0	0	18	18	19	20	18	17	20	23	23	23
# PO4 3.5 to 5.5	0	0	10	10	5	10	11	6	12	11	13	11
Pop. Mean	0	0	5.2	5.2	5.8	5.8	5.8	5.7	5.2	5.4	5.6	5.7
Std. Deviation	0	0	1.69	1.41	1.18	1.51	1.51	1.43	1.09	1.50	1.55	1.01
% PO4 3.5 to 5.5	0%	0%	56%	56%	26%	50%	61%	35%	60%	48%	57%	48%



	Jan	Feb	Mar	Apr	May	Jun	Jul	Aug	Sep	Oct	Nov	Dec
# PO4	0	0	18	18	19	20	18	17	20	23	23	23
# PO4 > 5.5	0	0	6	7	13	9	7	10	7	10	10	12
Pop. Mean	0	0	5.2	5.2	5.8	5.8	5.8	5.7	5.2	5.4	5.6	5.7
Std. Deviation	0	0	1.69	1.41	1.18	1.51	1.51	1.43	1.09	1.50	1.55	1.01
% PO4 > 5.5	0%	0%	33%	39%	68%	45%	39%	59%	35%	43%	43%	52%

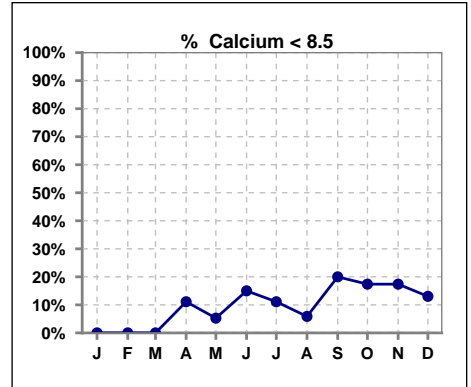


Methodology: a) All labs for 'Adequacy of Dialysis', 'Nutrition', 'Osteodystrophy', 'Anemia' and 'Diabetes' based on last value of month; b) BP's and #L processed are average of all values for month; c) Access data takes last access of month; d) Values for SGA and 'Infection Control' use most recent result.

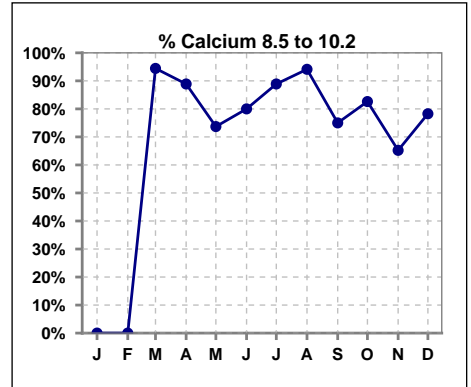
Lab methodology for PTH changed January 2012

III. OSTEODYSTROPHY - CONT.

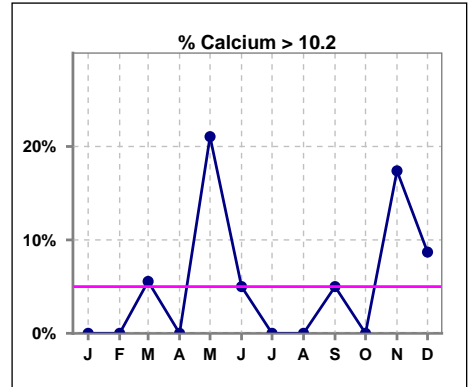
	Jan	Feb	Mar	Apr	May	Jun	Jul	Aug	Sep	Oct	Nov	Dec
# Calcium	0	0	18	18	19	20	18	17	20	23	23	23
# Calcium < 8.5	0	0	0	2	1	3	2	1	4	4	4	3
Pop. Mean	0	0	9.3	9.3	9.5	9.3	9.4	9.3	9.1	9.0	9.3	9.3
Std. Deviation	0	0	0.55	0.57	0.66	0.71	0.64	0.63	0.79	0.60	0.85	0.67
% Calcium < 8.5	0%	0%	0%	11%	5%	15%	11%	6%	20%	17%	17%	13%



	Jan	Feb	Mar	Apr	May	Jun	Jul	Aug	Sep	Oct	Nov	Dec
# Calcium	0	0	18	18	19	20	18	17	20	23	23	23
# Calcium 8.5 to 10.2	0	0	17	16	14	16	16	16	15	19	15	18
Pop. Mean	0	0	9.3	9.3	9.5	9.3	9.4	9.3	9.1	9.0	9.3	9.3
Std. Deviation	0	0	0.55	0.57	0.66	0.71	0.64	0.63	0.79	0.60	0.85	0.67
% Calcium 8.5 to 10.2	0%	0%	94%	89%	74%	80%	89%	94%	75%	83%	65%	78%



	Jan	Feb	Mar	Apr	May	Jun	Jul	Aug	Sep	Oct	Nov	Dec
# Calcium	0	0	18	18	19	20	18	17	20	23	23	23
# Calcium > 10.2	0	0	1	0	4	1	0	0	1	0	4	2
Pop. Mean	0	0	9.3	9.3	9.5	9.3	9.4	9.3	9.1	9.0	9.3	9.3
Std. Deviation	0	0	0.55	0.57	0.66	0.71	0.64	0.63	0.79	0.60	0.85	0.67
% Calcium > 10.2	0%	0%	6%	0%	21%	5%	0%	0%	5%	0%	17%	9%

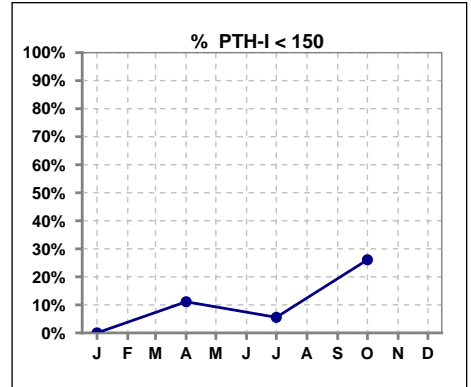


Methodology: a) All labs for 'Adequacy of Dialysis', 'Nutrition', 'Osteodystrophy', 'Anemia' and 'Diabetes' based on last value of month; b) BP's and #L processed are average of all values for month; c) Access data takes last access of month; d) Values for SGA and 'Infection Control' use most recent result.

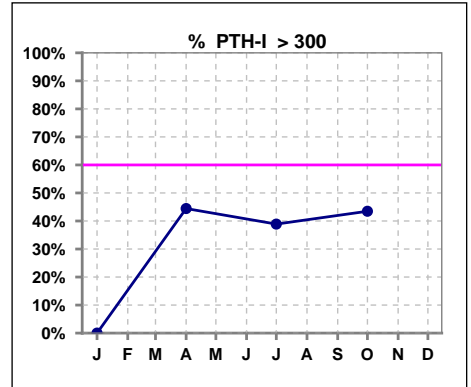
Lab methodology for PTH changed January 2012

III. OSTEODYSTROPHY - CONT.

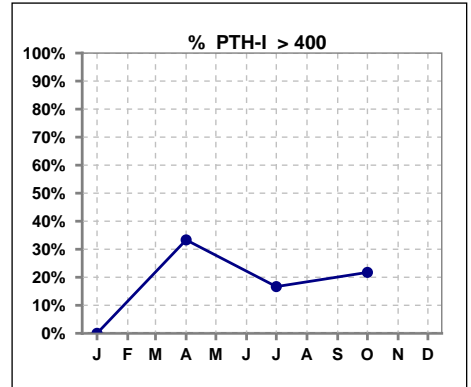
	Jan	Feb	Mar	Apr	May	Jun	Jul	Aug	Sep	Oct	Nov	Dec
# PTH-I	0			18			18			23		
# PTH-I < 150	0			2			1			6		
Pop. Mean	0			389			377			349		
Std. Deviation	0			319			362			308		
% PTH-I < 150	0%			11%			6%			26%		



	Jan	Feb	Mar	Apr	May	Jun	Jul	Aug	Sep	Oct	Nov	Dec
# PTH-I	0			18			18			23		
# PTH-I > 300	0			8			7			10		
Pop. Mean	0			389			377			349		
Std. Deviation	0			319			362			308		
% PTH-I > 300	0%			44%			39%			43%		



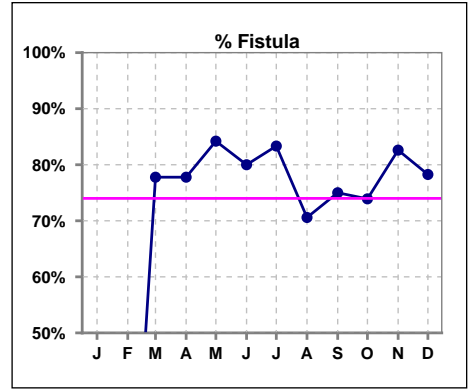
	Jan	Feb	Mar	Apr	May	Jun	Jul	Aug	Sep	Oct	Nov	Dec
# PTH-I	0			18			18			23		
# PTH-I > 400	0			6			3			5		
Pop. Mean	0			389			377			349		
Std. Deviation	0			319			362			308		
% PTH-I > 400	0%			33%			17%			22%		



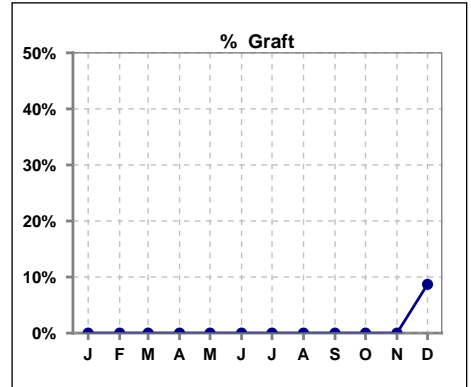
Methodology: a) All labs for 'Adequacy of Dialysis', 'Nutrition', 'Osteodystrophy', 'Anemia' and 'Diabetes' based on last value of month; b) BP's and #L processed are average of all values for month; c) Access data takes last access of month; d) Values for SGA and 'Infection Control' use most recent result.

IV. ACCESS

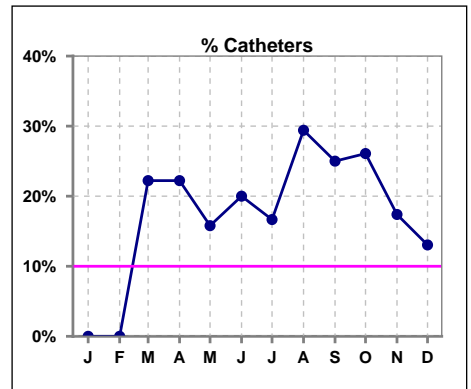
	Jan	Feb	Mar	Apr	May	Jun	Jul	Aug	Sep	Oct	Nov	Dec
# Access	0	0	18	18	19	20	18	17	20	23	23	23
# Fistula	0	0	14	14	16	16	15	12	15	17	19	18
% Fistula	0%	0%	78%	78%	84%	80%	83%	71%	75%	74%	83%	78%



	Jan	Feb	Mar	Apr	May	Jun	Jul	Aug	Sep	Oct	Nov	Dec
# Access	0	0	18	18	19	20	18	17	20	23	23	23
# Graft	0	0	0	0	0	0	0	0	0	0	0	2
% Graft	0%	0%	0%	0%	0%	0%	0%	0%	0%	0%	0%	9%



	Jan	Feb	Mar	Apr	May	Jun	Jul	Aug	Sep	Oct	Nov	Dec
# Access	0	0	18	18	19	20	18	17	20	23	23	23
# Catheters	0	0	4	4	3	4	3	5	5	6	4	3
% Catheters	0%	0%	22%	22%	16%	20%	17%	29%	25%	26%	17%	13%



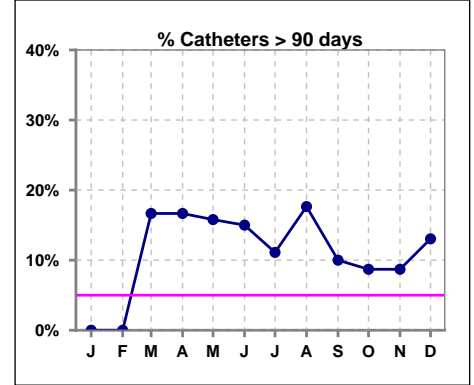
Methodology: a) All labs for 'Adequacy of Dialysis', 'Nutrition', 'Osteodystrophy', 'Anemia' and 'Diabetes' based on last value of month; b) BP's and #L processed are average of all values for month; c) Access data takes last access of month; d) Values for SGA and 'Infection Control' use most recent result.

IV. ACCESS - CONT.

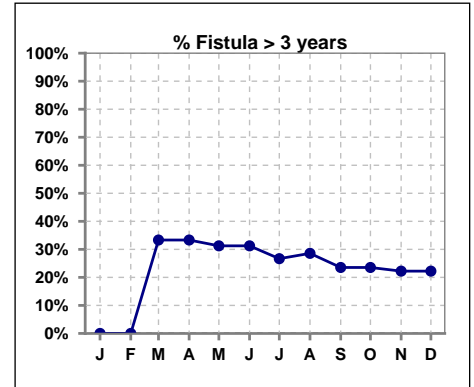
Catheters > 90 days

	Jan	Feb	Mar	Apr	May	Jun	Jul	Aug	Sep	Oct	Nov	Dec
# Access	0	0	18	18	19	20	18	17	20	23	23	23
# Catheters	0	0	3	3	3	3	2	3	2	2	2	3
% Catheters	0%	0%	17%	17%	16%	15%	11%	18%	10%	9%	9%	13%

Definition: Catheter in use on last treatment of the month



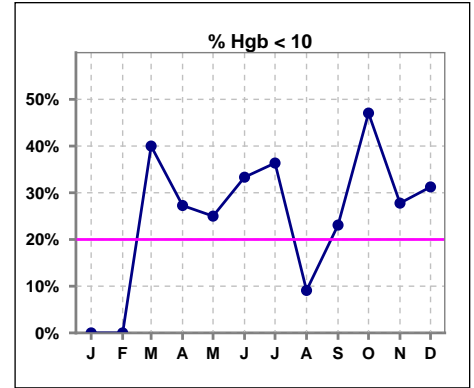
	Jan	Feb	Mar	Apr	May	Jun	Jul	Aug	Sep	Oct	Nov	Dec
# Fistula	0	0	15	15	16	16	15	14	17	17	18	18
# Fistula > 3 yrs	0	0	5	5	5	5	4	4	4	4	4	4
% Fistula > 3 yrs	0%	0%	33%	33%	31%	31%	27%	29%	24%	24%	22%	22%



V. ANEMIA

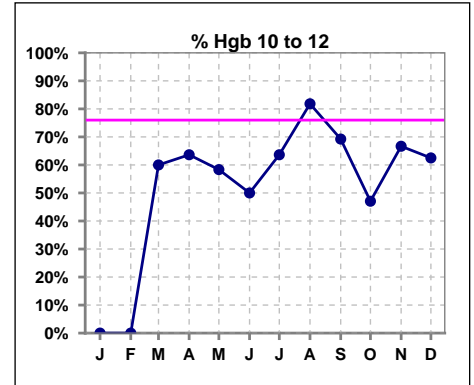
	Jan	Feb	Mar	Apr	May	Jun	Jul	Aug	Sep	Oct	Nov	Dec
# Hgb	0	0	10	11	12	12	11	11	13	17	18	16
# Hgb < 10	0	0	4	3	3	4	4	1	3	8	5	5
Pop. Mean	0	0	10.1	10.7	10.9	10.4	10.1	11.0	10.6	10.3	10.4	10.4
Std. Deviation	0	0	1.4	1.1	1.3	1.4	1.0	0.9	1.0	1.2	1.1	1.0
% Hgb < 10	0%	0%	40%	27%	25%	33%	36%	9%	23%	47%	28%	31%

Note: Excludes patients who received no ESA in month.



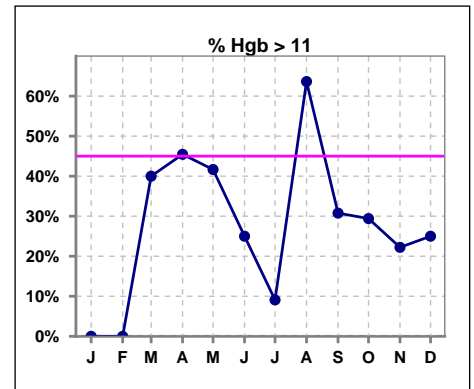
	Jan	Feb	Mar	Apr	May	Jun	Jul	Aug	Sep	Oct	Nov	Dec
# Hgb	0	0	10	11	12	12	11	11	13	17	18	16
# Hgb 10 to 12	0	0	6	7	7	6	7	9	9	8	12	10
Pop. Mean	0	0	10.1	10.7	10.9	10.4	10.1	11.0	10.6	10.3	10.4	10.4
Std. Deviation	0	0	1.4	1.1	1.3	1.4	1.0	0.9	1.0	1.2	1.1	1.0
% Hgb 10 to 12	0%	0%	60%	64%	58%	50%	64%	82%	69%	47%	67%	63%

Note: Excludes patients who received no ESA in month.



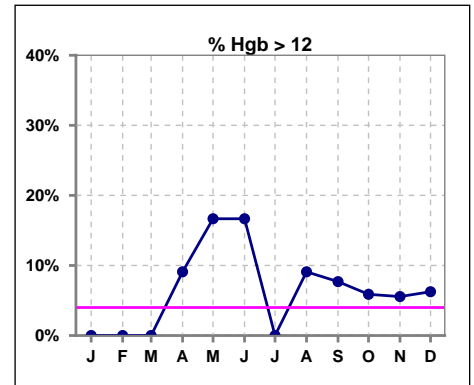
	Jan	Feb	Mar	Apr	May	Jun	Jul	Aug	Sep	Oct	Nov	Dec
# Hgb	0	0	10	11	12	12	11	11	13	17	18	16
# Hgb > 11	0	0	4	5	5	3	1	7	4	5	4	4
Pop. Mean	0	0	10.1	10.7	10.9	10.4	10.1	11.0	10.6	10.3	10.4	10.4
Std. Deviation	0	0	1.4	1.1	1.3	1.4	1.0	0.9	1.0	1.2	1.1	1.0
% Hgb > 11	0%	0%	40%	45%	42%	25%	9%	64%	31%	29%	22%	25%

Note: Excludes patients who received no ESA in month.



	Jan	Feb	Mar	Apr	May	Jun	Jul	Aug	Sep	Oct	Nov	Dec
# Hgb	0	0	10	11	12	12	11	11	13	17	18	16
# Hgb > 12	0	0	0	1	2	2	0	1	1	1	1	1
Pop. Mean	0	0	10.1	10.7	10.9	10.4	10.1	11.0	10.6	10.3	10.4	10.4
Std. Deviation	0	0	1.4	1.1	1.3	1.4	1.0	0.9	1.0	1.2	1.1	1.0
% Hgb > 12	0%	0%	0%	9%	17%	17%	0%	9%	8%	6%	6%	6%

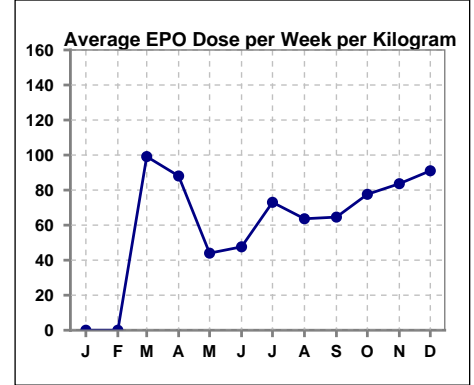
Note: Excludes patients who received no ESA in month.



V. ANEMIA - CONT.

Average EPO Dose per Week per Kilogram

	Jan	Feb	Mar	Apr	May	Jun	Jul	Aug	Sep	Oct	Nov	Dec
# Average EPO	0	0	99.1	88.0	44.0	47.6	73.0	63.6	64.6	77.6	83.6	91.0

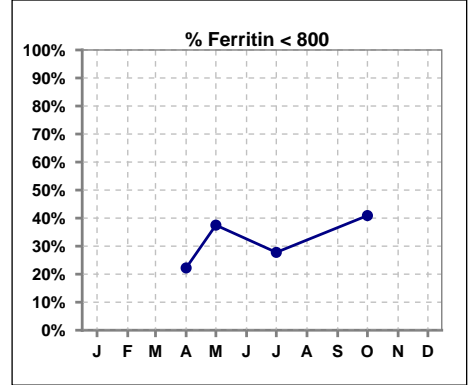


Methodology: a) All labs for 'Adequacy of Dialysis', 'Nutrition', 'Osteodystrophy', 'Anemia' and 'Diabetes' based on last value of month; b) BP's and #L processed are average of all values for month; c) Access data takes last access of month; d) Values for SGA and 'Infection Control' use most recent result.

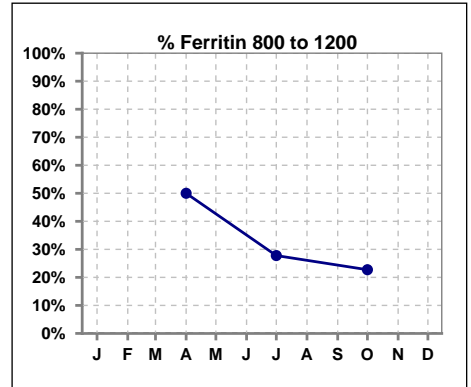
V. ANEMIA - CONT.

Iron Profile

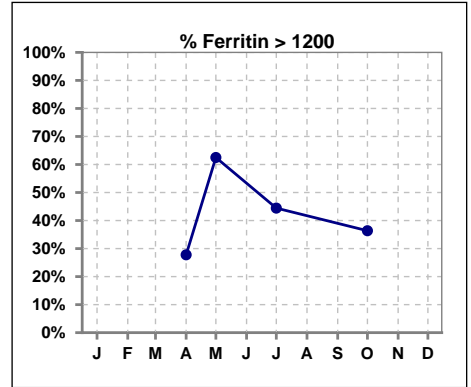
	Jan	Feb	Mar	Apr	May	Jun	Jul	Aug	Sep	Oct	Nov	Dec
# Ferritin				18	8		18			22		
# Ferritin < 800				4	3		5			9		
Pop. Mean				995	1347		1087			1009		
Std. Deviation				466	987		639			649		
% Ferritin < 800				22%	38%		28%			41%		



	Jan	Feb	Mar	Apr	May	Jun	Jul	Aug	Sep	Oct	Nov	Dec
# Ferritin				18	8		18			22		
# Ferritin 800 to 1200				9			5			5		
Pop. Mean				995	1347		1087			1009		
Std. Deviation				466	987		639			649		
% Ferritin 800 to 1200				50%			28%			23%		

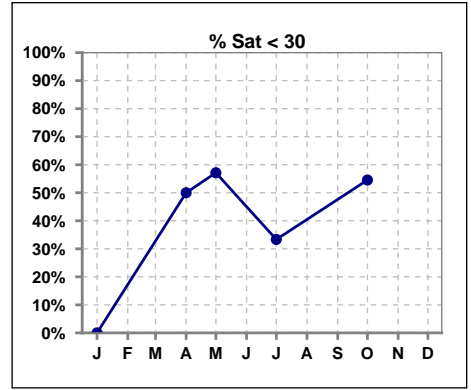


	Jan	Feb	Mar	Apr	May	Jun	Jul	Aug	Sep	Oct	Nov	Dec
# Ferritin				18	8		18			22		
# Ferritin > 1200				5	5		8			8		
Pop. Mean				995	1347		1087			1009		
Std. Deviation				466	987		639			649		
% Ferritin > 1200				28%	63%		44%			36%		

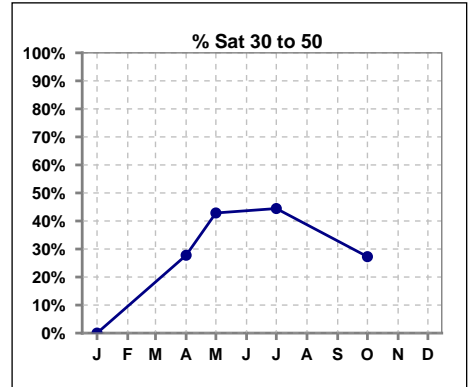


V. ANEMIA - CONT.

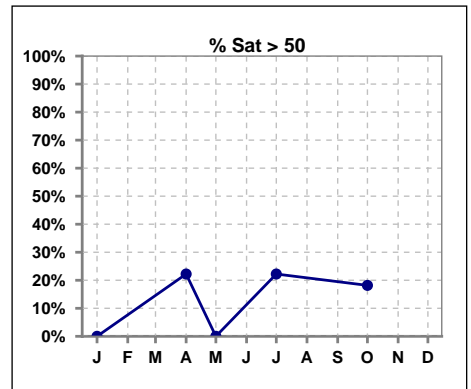
	Jan	Feb	Mar	Apr	May	Jun	Jul	Aug	Sep	Oct	Nov	Dec
# % Sat	0			18	7		18			22		
# % Sat < 30	0			9	4		6			12		
Pop. Mean	0			35	25		38			34		
Std. Deviation	0			25	10		20			20		
% % Sat < 30	0%			50%	57%		33%			55%		



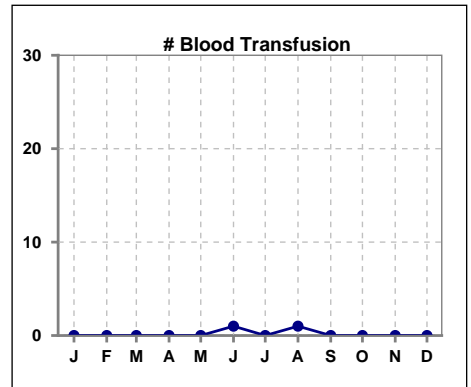
	Jan	Feb	Mar	Apr	May	Jun	Jul	Aug	Sep	Oct	Nov	Dec
# % Sat	0			18	7		18			22		
# % Sat 30 to 50	0			5	3		8			6		
Pop. Mean	0			35	25		38			34		
Std. Deviation	0			25	10		20			20		
% % Sat 30 to 50	0%			28%	43%		44%			27%		



	Jan	Feb	Mar	Apr	May	Jun	Jul	Aug	Sep	Oct	Nov	Dec
# % Sat	0			18	7		18			22		
# % Sat > 50	0			4	0		4			4		
Pop. Mean	0			35	25		38			34		
Std. Deviation	0			25	10		20			20		
% % Sat > 50	0%			22%	0%		22%			18%		



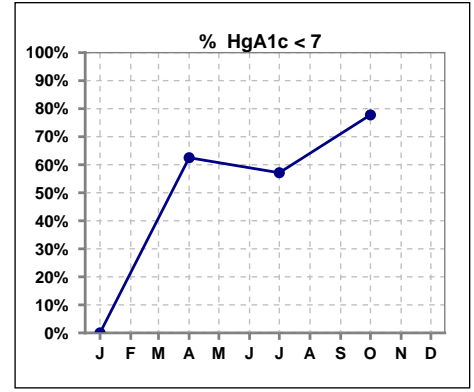
	Jan	Feb	Mar	Apr	May	Jun	Jul	Aug	Sep	Oct	Nov	Dec
# Patient	0	0	18	18	19	20	18	17	20	23	23	23
# Blood Transfusion	0	0	0	0	0	1	0	1	0	0	0	0



Methodology: a) All labs for 'Adequacy of Dialysis', 'Nutrition', 'Osteodystrophy', 'Anemia' and 'Diabetes' based on last value of month; b) BP's and #L processed are average of all values for month; c) Access data takes last access of month; d) Values for SGA and 'Infection Control' use most recent result.

VI. Diabetes

	Jan	Feb	Mar	Apr	May	Jun	Jul	Aug	Sep	Oct	Nov	Dec
# HgA1c	0			8			7			9		
# HgA1c < 7	0			5			4			7		
Pop. Mean	0			6.5			7.3			7.0		
Std. Deviation	0			1.22			1.93			2.10		
% HgA1c < 7	0%			63%			57%			78%		

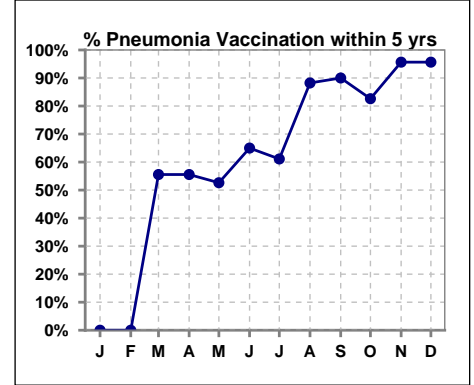


Methodology: a) All labs for 'Adequacy of Dialysis', 'Nutrition', 'Osteodystrophy', 'Anemia' and 'Diabetes' based on last value of month; b) BP's and #L processed are average of all values for month; c) Access data takes last access of month; d) Values for SGA and 'Infection Control' use most recent result.

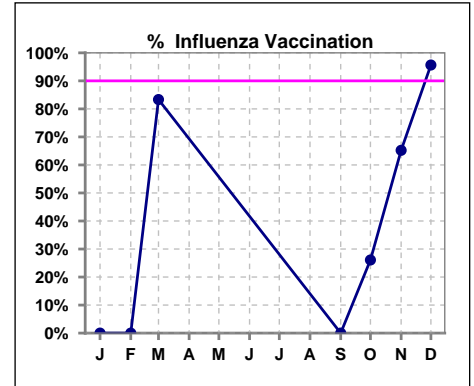
VII. Infection Control

Pneumonia vaccination within the past five years

	Jan	Feb	Mar	Apr	May	Jun	Jul	Aug	Sep	Oct	Nov	Dec
# Patient	0	0	18	18	19	20	18	17	20	23	23	23
# Pneumonia	0	0	10	10	10	13	11	15	18	19	22	22
% Pneumonia	0%	0%	56%	56%	53%	65%	61%	88%	90%	83%	96%	96%



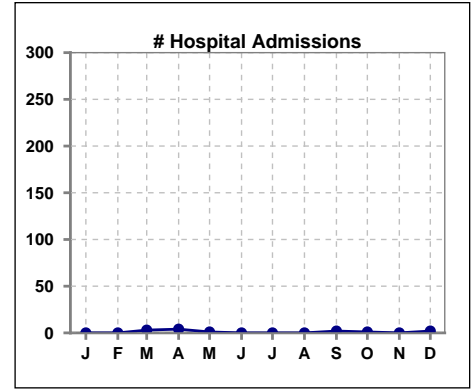
	Jan	Feb	Mar	Apr	May	Jun	Jul	Aug	Sep	Oct	Nov	Dec
# Patient	0	0	18						20	23	23	23
# Influenza	0	0	15						0	6	15	22
% Influenza	0%	0%	83%						0%	26%	65%	96%



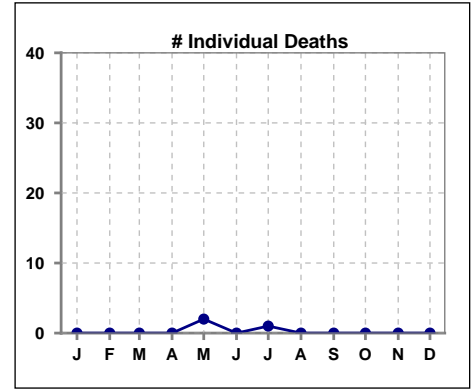
Methodology: a) All labs for 'Adequacy of Dialysis', 'Nutrition', 'Osteodystrophy', 'Anemia' and 'Diabetes' based on last value of month; b) BP's and #L processed are average of all values for month; c) Access data takes last access of month; d) Values for SGA and 'Infection Control' use most recent result.

VIII. Misc

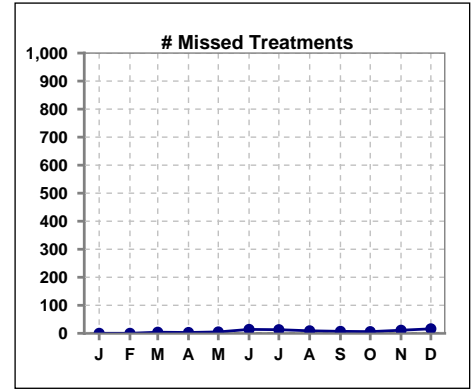
	Jan	Feb	Mar	Apr	May	Jun	Jul	Aug	Sep	Oct	Nov	Dec
# Patient	0	0	18	18	19	20	18	17	20	23	23	23
# Hospital Admissions	0	0	3	4	1	0	0	0	2	1	0	2



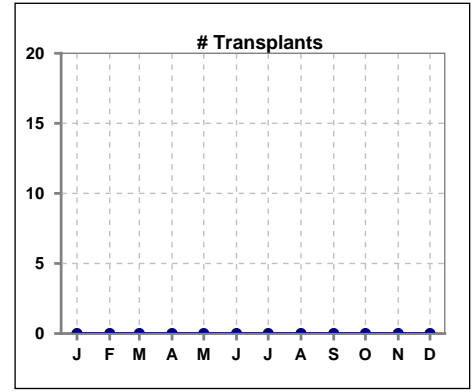
	Jan	Feb	Mar	Apr	May	Jun	Jul	Aug	Sep	Oct	Nov	Dec
# Patient	0	0	18	18	19	20	18	17	20	23	23	23
# Individual Deaths	0	0	0	0	2	0	1	0	0	0	0	0



	Jan	Feb	Mar	Apr	May	Jun	Jul	Aug	Sep	Oct	Nov	Dec
# Patient	0	0	18	18	19	20	18	17	20	23	23	23
# Missed Treatments	0	0	4	3	5	14	13	9	7	6	11	16



	Jan	Feb	Mar	Apr	May	Jun	Jul	Aug	Sep	Oct	Nov	Dec
# Patient	0	0	18	18	19	20	18	17	20	23	23	23
# Transplants	0	0	0	0	0	0	0	0	0	0	0	0



Methodology: a) All labs for 'Adequacy of Dialysis', 'Nutrition', 'Osteodystrophy', 'Anemia' and 'Diabetes' based on last value of month; b) BP's and #L processed are average of all values for month; c) Access data takes last access of month; d) Values for SGA and 'Infection Control' use most recent result.