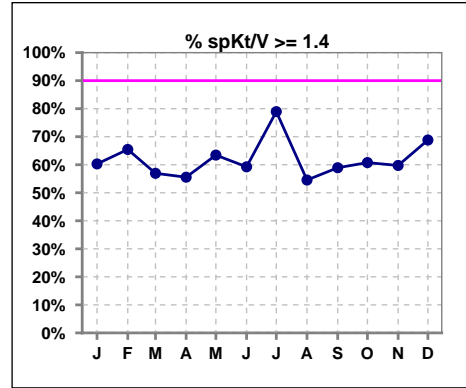
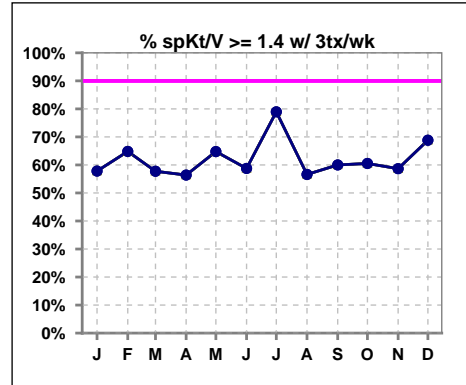


I. ADEQUACY OF DIALYSIS

	Jan	Feb	Mar	Apr	May	Jun	Jul	Aug	Sep	Oct	Nov	Dec
# spKt/V	68	55	72	99	93	81	57	55	56	79	77	93
# spKt/V >= 1.4	41	36	41	55	59	48	45	30	33	48	46	64
Pop. Mean	1.46	1.57	1.48	1.45	1.46	1.50	1.63	1.42	1.46	1.40	1.45	1.53
Std. Deviation	0.40	0.39	0.43	0.42	0.36	0.48	0.36	0.35	0.31	0.34	0.32	0.38
% spKt/V >= 1.4	60%	65%	57%	56%	63%	59%	79%	55%	59%	61%	60%	69%
% spKt/V >= 1.2	76%	85%	76%	74%	82%	79%	93%	71%	86%	81%	86%	86%

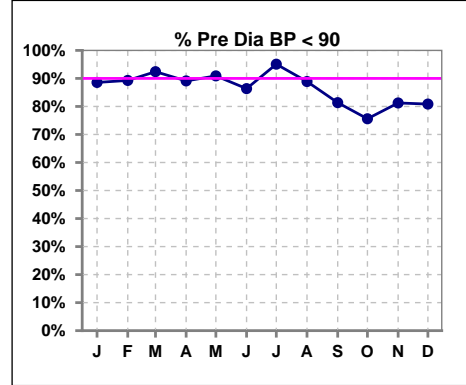


	Jan	Feb	Mar	Apr	May	Jun	Jul	Aug	Sep	Oct	Nov	Dec
# spKt/V w/ 3tx/wk	64	54	71	94	88	80	57	53	55	76	75	93
# spKt/V >= 1.4 w/3tx/wk	37	35	41	53	57	47	45	30	33	46	44	64
Pop. Mean	1.44	1.56	1.48	1.46	1.46	1.48	1.63	1.43	1.46	1.40	1.45	1.53
Std. Deviation	0.40	0.39	0.43	0.42	0.36	0.42	0.36	0.34	0.31	0.35	0.32	0.38
% spKt/V >= 1.4 w/3tx/wk	58%	65%	58%	56%	65%	59%	79%	57%	60%	61%	59%	69%

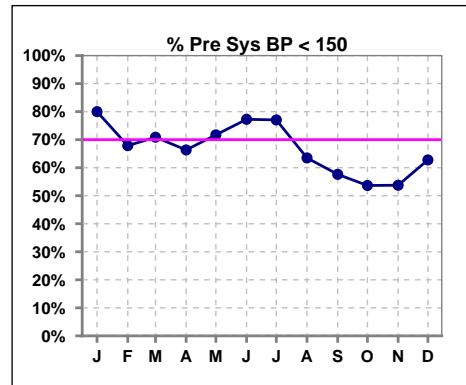


Blood Pressure Control (Pre)

	Jan	Feb	Mar	Apr	May	Jun	Jul	Aug	Sep	Oct	Nov	Dec
# Pre Dia BP	70	56	79	101	99	88	61	63	59	82	80	94
# Pre Dia BP < 90	62	50	73	90	90	76	58	56	48	62	65	76
Pop. Mean	73	73	72	74	74	75	73	75	77	79	77	77
Std. Deviation	14.2	13.7	12.3	12.3	12.0	13.0	11.6	12.8	15.1	14.8	14.1	13.8
% Pre Dia BP < 90	89%	89%	92%	89%	91%	86%	95%	89%	81%	76%	81%	81%



	Jan	Feb	Mar	Apr	May	Jun	Jul	Aug	Sep	Oct	Nov	Dec
# Pre Sys BP	70	56	79	101	99	88	61	63	59	82	80	94
# Pre Sys BP < 150	56	38	56	67	71	68	47	40	34	44	43	59
Pop. Mean	136	140	139	141	140	138	137	142	144	146	145	144
Std. Deviation	22.8	21.7	19.3	18.2	16.8	18.1	19.3	23.2	20.9	22.2	19.9	18.8
% Pre Sys BP < 150	80%	68%	71%	66%	72%	77%	77%	63%	58%	54%	54%	63%

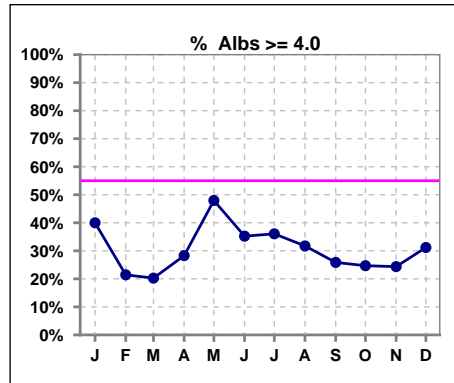


Methodology: a) All labs for 'Adequacy of Dialysis', 'Nutrition', 'Osteodystrophy', 'Anemia' and 'Diabetes' based on last value of month; b) BP's and #L processed are average of all values for month; c) Access data takes last access of month; d) Values for SGA and 'Infection Control' use most recent result.

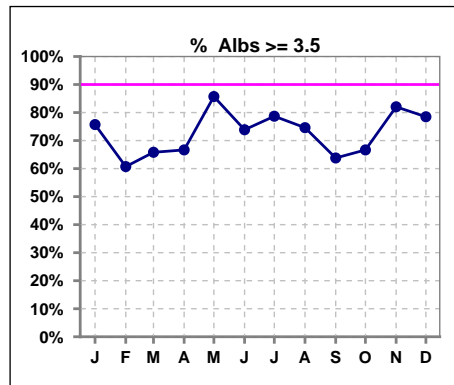
*Albumin values use BCG method - as of July 2001

II. NUTRITION

	Jan	Feb	Mar	Apr	May	Jun	Jul	Aug	Sep	Oct	Nov	Dec
# Albumin	70	56	79	99	98	88	61	63	58	81	78	93
# Albumin >= 4.0	28	12	16	28	47	31	22	20	15	20	19	29
Pop. Mean	3.7	3.6	3.6	3.7	3.8	3.6	3.7	3.6	3.6	3.6	3.7	3.7
Std. Deviation	0.44	0.47	0.47	0.51	0.49	0.55	0.44	0.51	0.53	0.48	0.47	0.44
% Alb >= 4.0	40%	21%	20%	28%	48%	35%	36%	32%	26%	25%	24%	31%



	Jan	Feb	Mar	Apr	May	Jun	Jul	Aug	Sep	Oct	Nov	Dec
# Albumin	70	56	79	99	98	88	61	63	58	81	78	93
# Albumin >= 3.5	53	34	52	66	84	65	48	47	37	54	64	73
Pop. Mean	3.7	3.6	3.6	3.7	3.8	3.6	3.7	3.6	3.6	3.6	3.7	3.7
Std. Deviation	0.44	0.47	0.47	0.51	0.49	0.55	0.44	0.51	0.53	0.48	0.47	0.44
% Alb >= 3.5	76%	61%	66%	67%	86%	74%	79%	75%	64%	67%	82%	78%

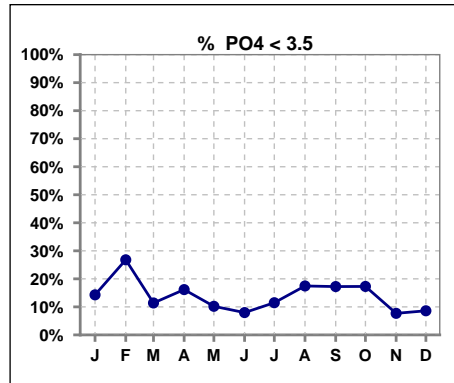


Methodology: a) All labs for 'Adequacy of Dialysis', 'Nutrition', 'Osteodystrophy', 'Anemia' and 'Diabetes' based on last value of month; b) BP's and #L processed are average of all values for month; c) Access data takes last access of month; d) Values for SGA and 'Infection Control' use most recent result.

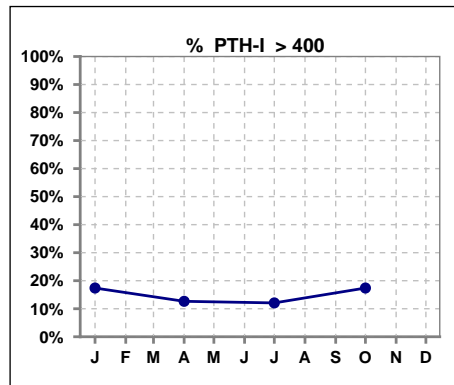
Lab methodology for PTH changed January 2012

III. OSTEODYSTROPHY

	Jan	Feb	Mar	Apr	May	Jun	Jul	Aug	Sep	Oct	Nov	Dec
# PO4	70	56	79	99	98	88	61	63	58	81	78	93
# PO4 < 3.5	10	15	9	16	10	7	7	11	10	14	6	8
Pop. Mean	5.1	4.9	5.2	5.2	5.5	5.5	5.1	5.1	5.1	5.3	5.7	5.5
Std. Deviation	1.67	1.74	1.85	1.85	1.77	1.73	1.52	1.64	1.82	1.87	1.91	1.47
% PO4 < 3.5	14%	27%	11%	16%	10%	8%	11%	17%	17%	17%	8%	9%



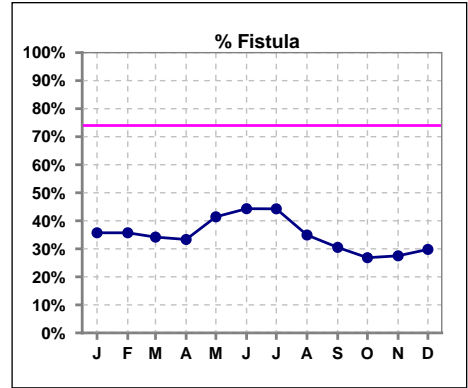
	Jan	Feb	Mar	Apr	May	Jun	Jul	Aug	Sep	Oct	Nov	Dec
# PTH-I	69			87			58			69		
# PTH-I > 400	12			11			7			12		
Pop. Mean	229			250			249			252		
Std. Deviation	205			202			326			237		
% PTH-I > 400	17%			13%			12%			17%		



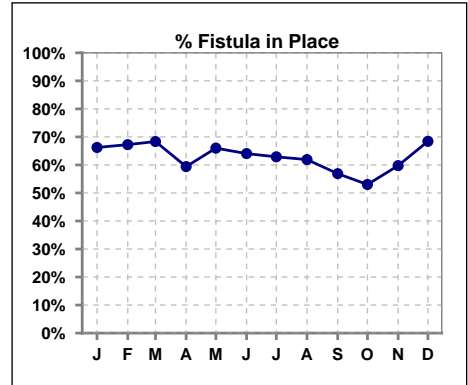
Methodology: a) All labs for 'Adequacy of Dialysis', 'Nutrition', 'Osteodystrophy', 'Anemia' and 'Diabetes' based on last value of month; b) BP's and #L processed are average of all values for month; c) Access data takes last access of month; d) Values for SGA and 'Infection Control' use most recent result.

IV. ACCESS

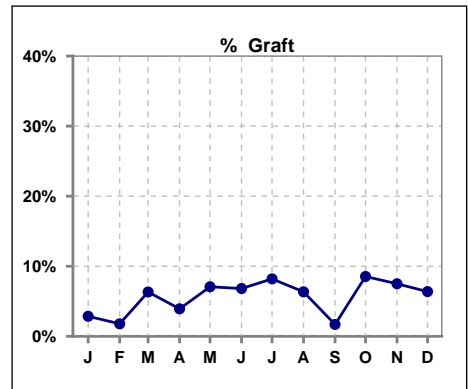
	Jan	Feb	Mar	Apr	May	Jun	Jul	Aug	Sep	Oct	Nov	Dec
# Access	70	56	79	102	99	88	61	63	59	82	80	94
# Fistula	25	20	27	34	41	39	27	22	18	22	22	28
% Fistula	36%	36%	34%	33%	41%	44%	44%	35%	31%	27%	28%	30%



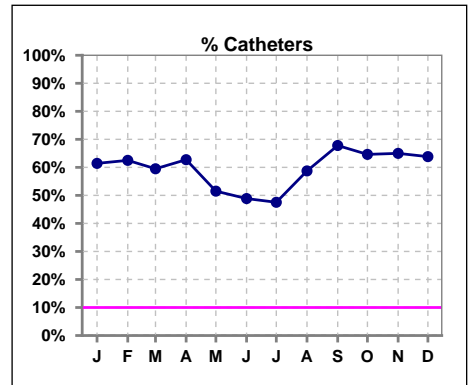
	Jan	Feb	Mar	Apr	May	Jun	Jul	Aug	Sep	Oct	Nov	Dec
# Patient	77	58	79	101	100	89	62	63	58	83	82	95
# Fistula in Place	51	39	54	60	66	57	39	39	33	44	49	65
% Fistula in Place	66%	67%	68%	59%	66%	64%	63%	62%	57%	53%	60%	68%



	Jan	Feb	Mar	Apr	May	Jun	Jul	Aug	Sep	Oct	Nov	Dec
# Access	70	56	79	102	99	88	61	63	59	82	80	94
# Graft	2	1	5	4	7	6	5	4	1	7	6	6
% Graft	3%	2%	6%	4%	7%	7%	8%	6%	2%	9%	8%	6%



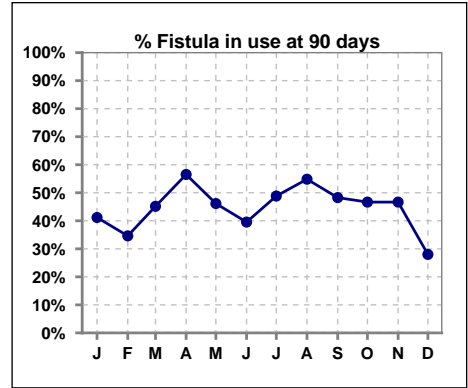
	Jan	Feb	Mar	Apr	May	Jun	Jul	Aug	Sep	Oct	Nov	Dec
# Access	70	56	79	102	99	88	61	63	59	82	80	94
# Catheters	43	35	47	64	51	43	29	37	40	53	52	60
% Catheters	61%	63%	59%	63%	52%	49%	48%	59%	68%	65%	65%	64%



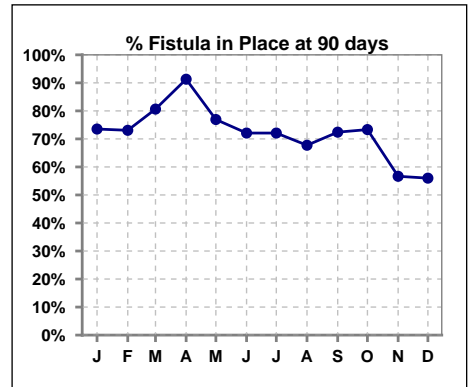
Methodology: a) All labs for 'Adequacy of Dialysis', 'Nutrition', 'Osteodystrophy', 'Anemia' and 'Diabetes' based on last value of month; b) BP's and #L processed are average of all values for month; c) Access data takes last access of month; d) Values for SGA and 'Infection Control' use most recent result.

IV. ACCESS - CONT. Access at 90 days for those patients that reached 90 days within the month.

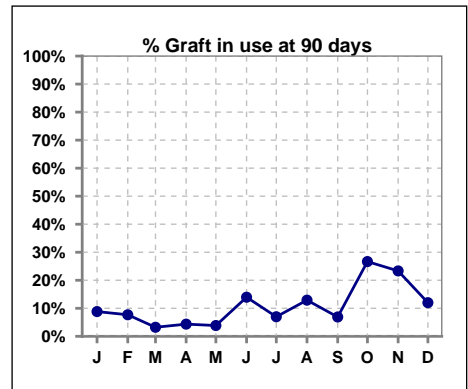
	Jan	Feb	Mar	Apr	May	Jun	Jul	Aug	Sep	Oct	Nov	Dec
# Patient	34	26	31	23	26	43	43	31	29	15	30	25
# Fistula in use	14	9	14	13	12	17	21	17	14	7	14	7
% Fistula in use	41%	35%	45%	57%	46%	40%	49%	55%	48%	47%	47%	28%



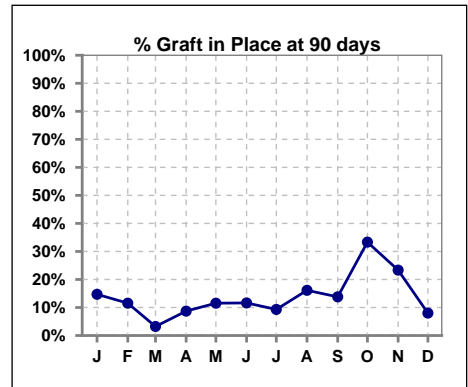
	Jan	Feb	Mar	Apr	May	Jun	Jul	Aug	Sep	Oct	Nov	Dec
# Patient	34	26	31	23	26	43	43	31	29	15	30	25
# Fistula in Place	25	19	25	21	20	31	31	21	21	11	17	14
% Fistula in Place	74%	73%	81%	91%	77%	72%	72%	68%	72%	73%	57%	56%



	Jan	Feb	Mar	Apr	May	Jun	Jul	Aug	Sep	Oct	Nov	Dec
# Patient	34	26	31	23	26	43	43	31	29	15	30	25
# Graft in use	3	2	1	1	1	6	3	4	2	4	7	3
% Graft in use	9%	8%	3%	4%	4%	14%	7%	13%	7%	27%	23%	12%



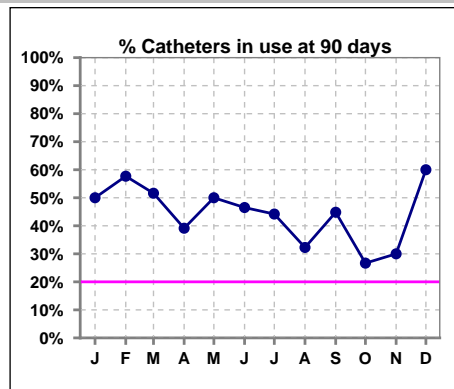
	Jan	Feb	Mar	Apr	May	Jun	Jul	Aug	Sep	Oct	Nov	Dec
# Patient	34	26	31	23	26	43	43	31	29	15	30	25
# Graft in Place	5	3	1	2	3	5	4	5	4	5	7	2
% Graft in Place	15%	12%	3%	9%	12%	12%	9%	16%	14%	33%	23%	8%



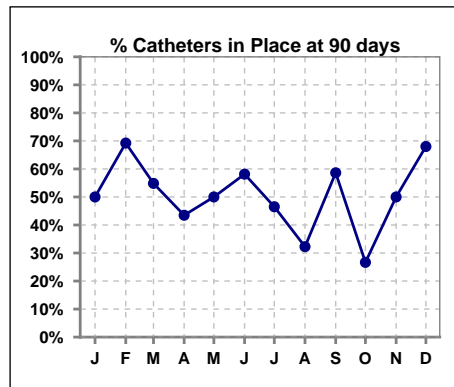
Methodology: a) All labs for 'Adequacy of Dialysis', 'Nutrition', 'Osteodystrophy', 'Anemia' and 'Diabetes' based on last value of month; b) BP's and #L processed are average of all values for month; c) Access data takes last access of month; d) Values for SGA and 'Infection Control' use most recent result.

IV. ACCESS - CONT. Access at 90 days for those patients that reached 90 days within the month. - CONT.

	Jan	Feb	Mar	Apr	May	Jun	Jul	Aug	Sep	Oct	Nov	Dec
# Patient	34	26	31	23	26	43	43	31	29	15	30	25
# Catheters in use	17	15	16	9	13	20	19	10	13	4	9	15
% Catheters in use	50%	58%	52%	39%	50%	47%	44%	32%	45%	27%	30%	60%



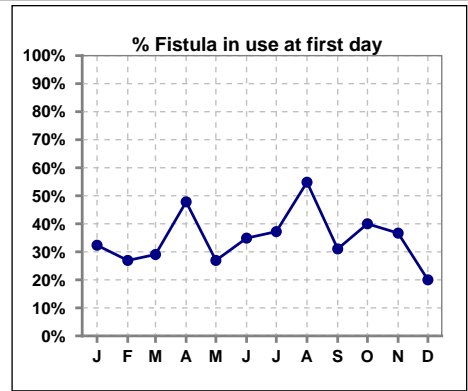
	Jan	Feb	Mar	Apr	May	Jun	Jul	Aug	Sep	Oct	Nov	Dec
# Patient	34	26	31	23	26	43	43	31	29	15	30	25
# Catheters in Place	17	18	17	10	13	25	20	10	17	4	15	17
% Catheters in Place	50%	69%	55%	43%	50%	58%	47%	32%	59%	27%	50%	68%



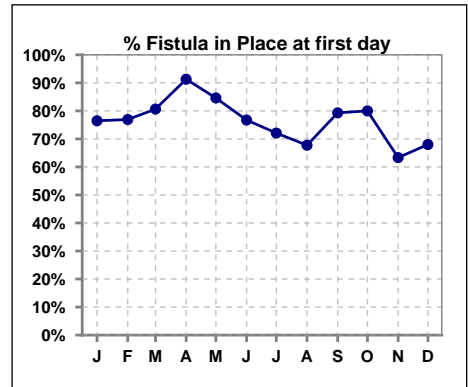
Methodology: a) All labs for 'Adequacy of Dialysis', 'Nutrition', 'Osteodystrophy', 'Anemia' and 'Diabetes' based on last value of month; b) BP's and #L processed are average of all values for month; c) Access data takes last access of month; d) Values for SGA and 'Infection Control' use most recent result.

IV. ACCESS - CONT. Access at first day for those patients that reached 90 days within the month.

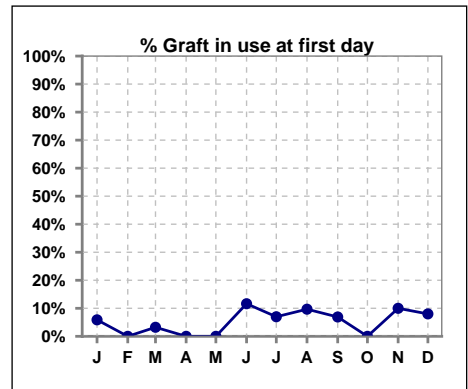
	Jan	Feb	Mar	Apr	May	Jun	Jul	Aug	Sep	Oct	Nov	Dec
# Patient	34	26	31	23	26	43	43	31	29	15	30	25
# Fistula in use	11	7	9	11	7	15	16	17	9	6	11	5
% Fistula in use	32%	27%	29%	48%	27%	35%	37%	55%	31%	40%	37%	20%



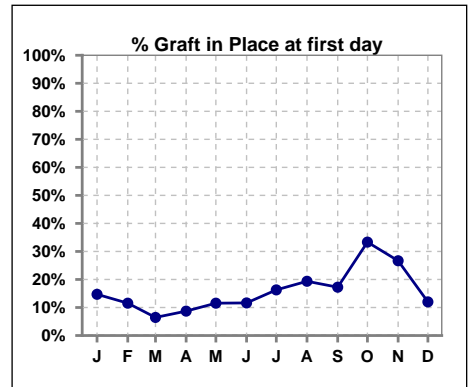
	Jan	Feb	Mar	Apr	May	Jun	Jul	Aug	Sep	Oct	Nov	Dec
# Patient	34	26	31	23	26	43	43	31	29	15	30	25
# Fistula in Place	26	20	25	21	22	33	31	21	23	12	19	17
% Fistula in Place	76%	77%	81%	91%	85%	77%	72%	68%	79%	80%	63%	68%



	Jan	Feb	Mar	Apr	May	Jun	Jul	Aug	Sep	Oct	Nov	Dec
# Patient	34	26	31	23	26	43	43	31	29	15	30	25
# Graft in use	2	0	1	0	0	5	3	3	2	0	3	2
% Graft in use	6%	0%	3%	0%	0%	12%	7%	10%	7%	0%	10%	8%



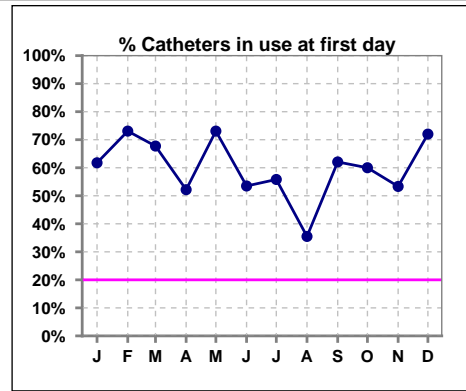
	Jan	Feb	Mar	Apr	May	Jun	Jul	Aug	Sep	Oct	Nov	Dec
# Patient	34	26	31	23	26	43	43	31	29	15	30	25
# Graft in Place	5	3	2	2	3	5	7	6	5	5	8	3
% Graft in Place	15%	12%	6%	9%	12%	12%	16%	19%	17%	33%	27%	12%



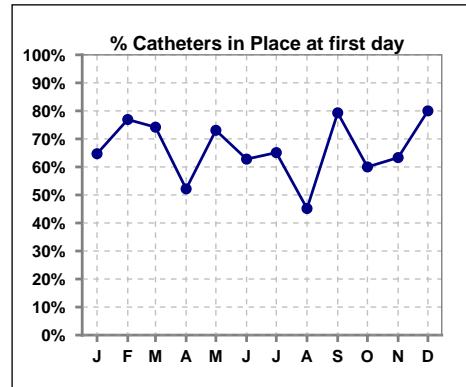
Methodology: a) All labs for 'Adequacy of Dialysis', 'Nutrition', 'Osteodystrophy', 'Anemia' and 'Diabetes' based on last value of month; b) BP's and #L processed are average of all values for month; c) Access data takes last access of month; d) Values for SGA and 'Infection Control' use most recent result.

IV. ACCESS - CONT. Access at first day for those patients that reached 90 days within the month. - CONT.

	Jan	Feb	Mar	Apr	May	Jun	Jul	Aug	Sep	Oct	Nov	Dec
# Patient	34	26	31	23	26	43	43	31	29	15	30	25
# Catheters in use	21	19	21	12	19	23	24	11	18	9	16	18
% Catheters in use	62%	73%	68%	52%	73%	53%	56%	35%	62%	60%	53%	72%



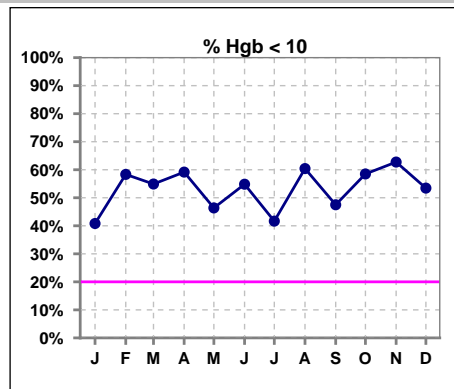
	Jan	Feb	Mar	Apr	May	Jun	Jul	Aug	Sep	Oct	Nov	Dec
# Patient	34	26	31	23	26	43	43	31	29	15	30	25
# Catheters in Place	22	20	23	12	19	27	28	14	23	9	19	20
% Catheters in Place	65%	77%	74%	52%	73%	63%	65%	45%	79%	60%	63%	80%



V. ANEMIA

	Jan	Feb	Mar	Apr	May	Jun	Jul	Aug	Sep	Oct	Nov	Dec
# Hgb	49	36	51	71	69	62	48	48	40	53	51	58
# Hgb < 10	20	21	28	42	32	34	20	29	19	31	32	31
Pop. Mean	10.2	9.6	9.9	9.7	10.2	9.8	10.1	9.7	10.1	9.7	9.4	9.8
Std. Deviation	1.3	1.4	1.4	1.3	1.3	1.2	1.5	1.4	1.5	1.2	1.4	1.2
% Hgb < 10	41%	58%	55%	59%	46%	55%	42%	60%	48%	58%	63%	53%

Note: Excludes patients who received no ESA in month.



	Jan	Feb	Mar	Apr	May	Jun	Jul	Aug	Sep	Oct	Nov	Dec
# Hgb	49	36	51	71	69	62	48	48	40	53	51	58
# Hgb > 12	3	0	4	4	3	0	1	2	5	0	0	1
Pop. Mean	10.2	9.6	9.9	9.7	10.2	9.8	10.1	9.7	10.1	9.7	9.4	9.8
Std. Deviation	1.3	1.4	1.4	1.3	1.3	1.2	1.5	1.4	1.5	1.2	1.4	1.2
% Hgb > 12	6%	0%	8%	6%	4%	0%	2%	4%	13%	0%	0%	2%

Note: Excludes patients who received no ESA in month.

