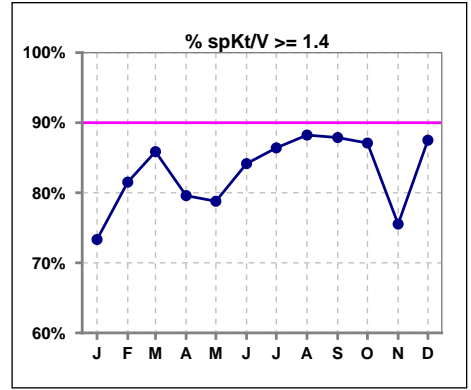
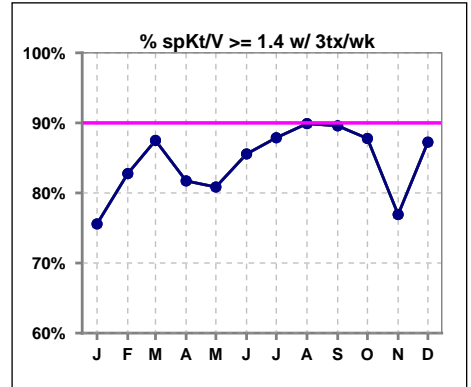


I. ADEQUACY OF DIALYSIS

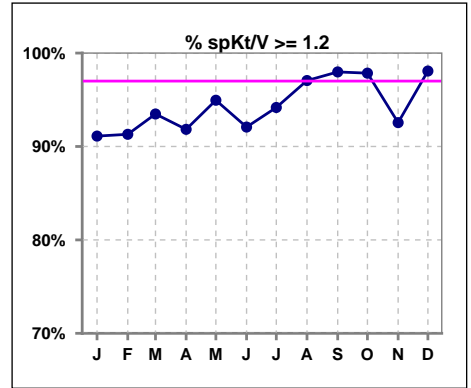
	Jan	Feb	Mar	Apr	May	Jun	Jul	Aug	Sep	Oct	Nov	Dec
# spKt/V	90	92	92	98	99	101	103	102	99	93	94	104
# spKt/V >= 1.4	66	75	79	78	78	85	89	90	87	81	71	91
Pop. Mean	1.59	1.68	1.65	1.64	1.69	1.68	1.68	1.71	1.70	1.68	1.65	1.75
Std. Deviation	0.40	0.35	0.33	0.33	0.36	0.35	0.31	0.32	0.28	0.33	0.34	0.33
% spKt/V >= 1.4	73%	82%	86%	80%	79%	84%	86%	88%	88%	87%	76%	88%



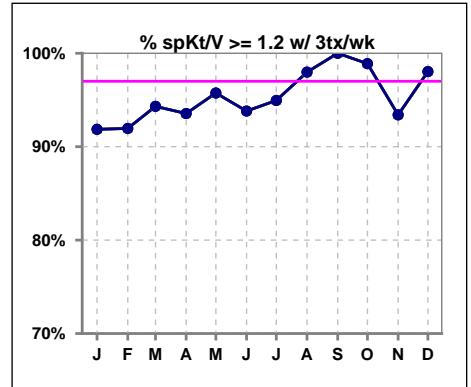
	Jan	Feb	Mar	Apr	May	Jun	Jul	Aug	Sep	Oct	Nov	Dec
# spKt/V w/ 3tx/wk	86	87	88	93	94	97	99	99	96	90	91	102
# spKt/V >= 1.4 w/3tx/wk	65	72	77	76	76	83	87	89	86	79	70	89
Pop. Mean	1.60	1.69	1.66	1.66	1.70	1.69	1.69	1.73	1.72	1.69	1.67	1.76
Std. Deviation	0.40	0.35	0.32	0.31	0.34	0.34	0.31	0.31	0.27	0.32	0.34	0.33
% >= 1.4 w/3tx/wk	76%	83%	88%	82%	81%	86%	88%	90%	90%	88%	77%	87%



	Jan	Feb	Mar	Apr	May	Jun	Jul	Aug	Sep	Oct	Nov	Dec
# spKt/V	90	92	92	98	99	101	103	102	99	93	94	104
# spKt/V >= 1.2	82	84	86	90	94	93	97	99	97	91	87	102
Pop. Mean	1.59	1.68	1.65	1.64	1.69	1.68	1.68	1.71	1.70	1.68	1.65	1.75
Std. Deviation	0.40	0.35	0.33	0.33	0.36	0.35	0.31	0.32	0.28	0.33	0.34	0.33
% spKt/V >= 1.2	91%	91%	93%	92%	95%	92%	94%	97%	98%	98%	93%	98%



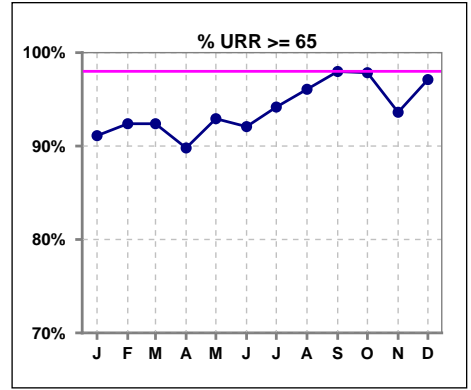
	Jan	Feb	Mar	Apr	May	Jun	Jul	Aug	Sep	Oct	Nov	Dec
# spKt/V w/ 3tx/wk	86	87	88	93	94	97	99	99	96	90	91	102
# spKt/V >= 1.2 w/3tx/wk	79	80	83	87	90	91	94	97	96	89	85	100
Pop. Mean	1.60	1.69	1.66	1.66	1.70	1.69	1.69	1.73	1.72	1.69	1.67	1.76
Std. Deviation	0.40	0.35	0.32	0.31	0.34	0.34	0.31	0.31	0.27	0.32	0.34	0.33
% >= 1.2 w/3tx/wk	92%	92%	94%	94%	96%	94%	95%	98%	100%	99%	93%	98%



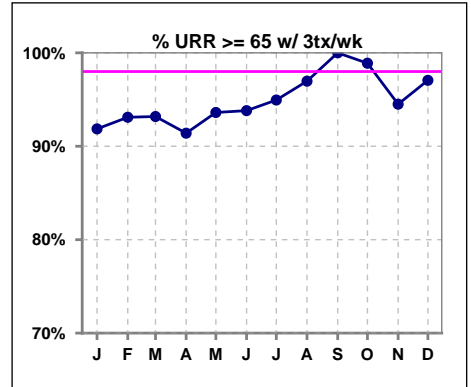
Methodology: a) All labs for 'Adequacy of Dialysis', 'Nutrition', 'Osteodystrophy', 'Anemia' and 'Diabetes' based on last value of month; b) BP's and #L processed are average of all values for month; c) Access data takes last access of month; d) Values for SGA and 'Infection Control' use most recent result.

I. ADEQUACY OF DIALYSIS - CONT.

	Jan	Feb	Mar	Apr	May	Jun	Jul	Aug	Sep	Oct	Nov	Dec
# URR	90	92	92	98	99	101	103	102	99	93	94	104
# URR >= 65	82	85	85	88	92	93	97	98	97	91	88	101
Pop. Mean	74	76	75	75	76	76	76	77	77	76	75	78
Std. Deviation	8.37	7.28	7.30	7.53	7.20	7.32	6.59	6.66	5.72	6.60	7.77	5.93
% URR >= 65	91%	92%	92%	90%	93%	92%	94%	96%	98%	98%	94%	97%



	Jan	Feb	Mar	Apr	May	Jun	Jul	Aug	Sep	Oct	Nov	Dec
# URR w/ 3tx/wk	86	87	88	93	94	97	99	99	96	90	91	102
# URR>=65 w/ 3tx/wk	79	81	82	85	88	91	94	96	96	89	86	99
Pop. Mean	74	76	75	75	76	76	76	77	77	76	76	78
Std. Deviation	8.30	7.04	6.88	6.94	6.87	6.90	6.34	6.24	5.08	5.87	7.55	5.95
% URR>=65 w/ 3tx/wk	92%	93%	93%	91%	94%	94%	95%	97%	100%	99%	95%	97%

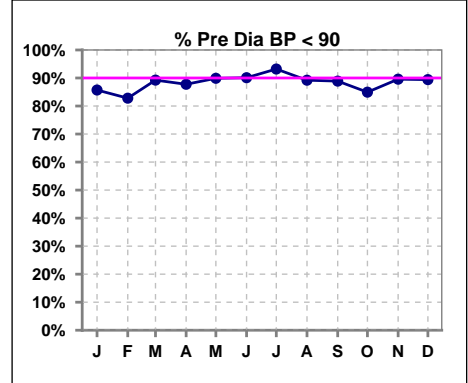


Methodology: a) All labs for 'Adequacy of Dialysis', 'Nutrition', 'Osteodystrophy', 'Anemia' and 'Diabetes' based on last value of month; b) BP's and #L processed are average of all values for month; c) Access data takes last access of month; d) Values for SGA and 'Infection Control' use most recent result.

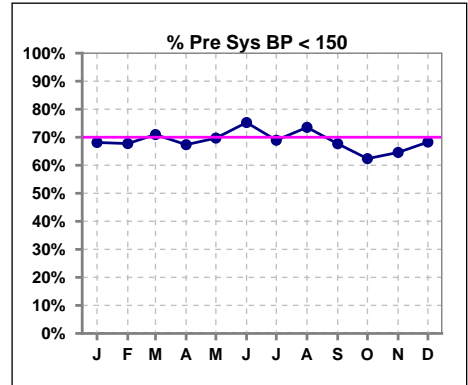
I. ADEQUACY OF DIALYSIS - CONT.

Blood Pressure Control (Pre)

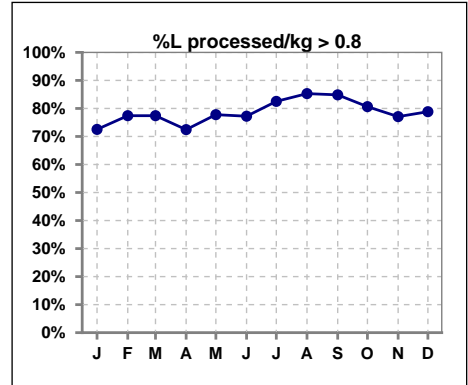
	Jan	Feb	Mar	Apr	May	Jun	Jul	Aug	Sep	Oct	Nov	Dec
# Pre Dia BP	91	93	93	98	99	101	103	102	99	93	96	104
# Pre Dia BP < 90	78	77	83	86	89	91	96	91	88	79	86	93
Pop. Mean	74	75	73	73	73	71	72	72	73	73	73	72
Std. Deviation	13.9	15.1	14.9	14.1	14.4	13.5	13.0	13.0	12.8	13.8	13.4	14.4
% Pre Dia BP < 90	86%	83%	89%	88%	90%	90%	93%	89%	89%	85%	90%	89%



	Jan	Feb	Mar	Apr	May	Jun	Jul	Aug	Sep	Oct	Nov	Dec
# Pre Sys BP	91	93	93	98	99	101	103	102	99	93	96	104
# Pre Sys BP < 150	62	63	66	66	69	76	71	75	67	58	62	71
Pop. Mean	137	140	138	139	137	137	139	137	140	139	140	139
Std. Deviation	21.4	23.7	23.3	22.2	22.4	22.1	22.2	22.9	22.2	24.0	22.8	22.9
%Pre Sys BP <150	68%	68%	71%	67%	70%	75%	69%	74%	68%	62%	65%	68%

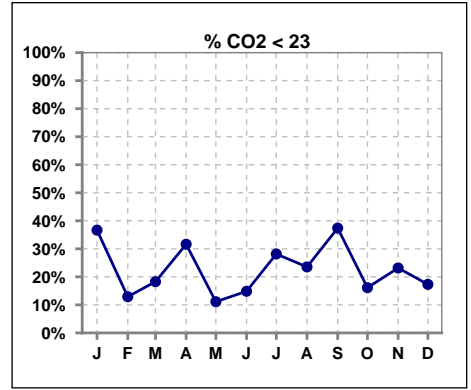


	Jan	Feb	Mar	Apr	May	Jun	Jul	Aug	Sep	Oct	Nov	Dec
# L processed/kg	91	93	93	98	99	101	103	102	99	93	96	104
# L processed/kg>0.8	66	72	72	71	77	78	85	87	84	75	74	82
Pop. Mean	1	1	1	1	1	1	1	1	1	1	1	1
Std. Deviation	0.3	0.3	0.2	0.3	0.3	0.3	0.3	0.3	0.3	0.3	0.3	0.3
% L processed/kg>0.8	73%	77%	77%	72%	78%	77%	83%	85%	85%	81%	77%	79%

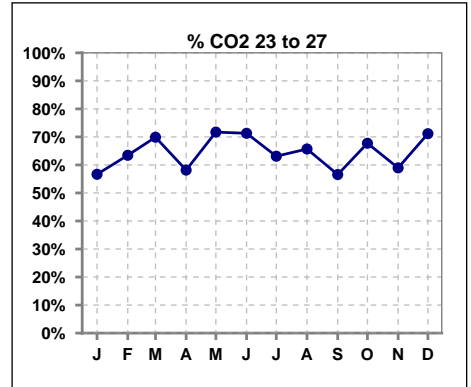


I. ADEQUACY OF DIALYSIS - CONT.

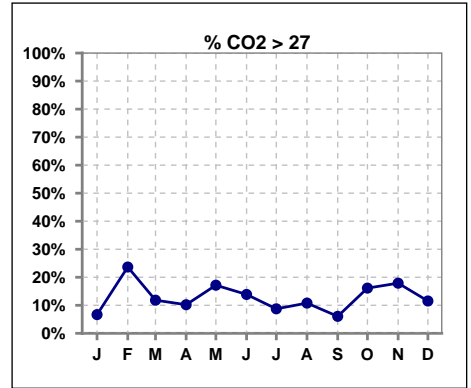
	Jan	Feb	Mar	Apr	May	Jun	Jul	Aug	Sep	Oct	Nov	Dec
# CO2	90	93	93	98	99	101	103	102	99	93	95	104
# CO2 < 23	33	12	17	31	11	15	29	24	37	15	22	18
Pop. Mean	24	26	25	24	25	25	24	25	23	25	25	25
Std. Deviation	2.54	2.44	2.62	2.72	2.36	3.23	2.81	2.60	3.59	3.11	2.73	2.50
% CO2 < 23	37%	13%	18%	32%	11%	15%	28%	24%	37%	16%	23%	17%



	Jan	Feb	Mar	Apr	May	Jun	Jul	Aug	Sep	Oct	Nov	Dec
# CO2	90	93	93	98	99	101	103	102	99	93	95	104
# CO2 23 to 27	51	59	65	57	71	72	65	67	56	63	56	74
Pop. Mean	24	26	25	24	25	25	24	25	23	25	25	25
Std. Deviation	2.54	2.44	2.62	2.72	2.36	3.23	2.81	2.60	3.59	3.11	2.73	2.50
% CO2 23 to 27	57%	63%	70%	58%	72%	71%	63%	66%	57%	68%	59%	71%



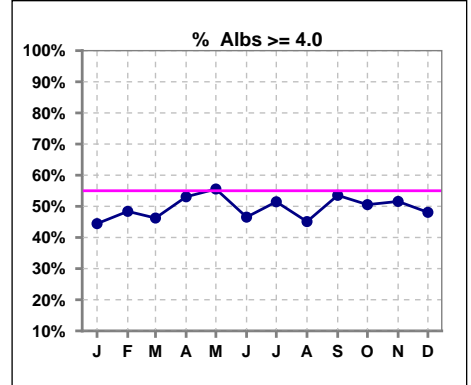
	Jan	Feb	Mar	Apr	May	Jun	Jul	Aug	Sep	Oct	Nov	Dec
# CO2	90	93	93	98	99	101	103	102	99	93	95	104
# CO2 > 27	6	22	11	10	17	14	9	11	6	15	17	12
Pop. Mean	24	26	25	24	25	25	24	25	23	25	25	25
Std. Deviation	2.54	2.44	2.62	2.72	2.36	3.23	2.81	2.60	3.59	3.11	2.73	2.50
% CO2 > 27	7%	24%	12%	10%	17%	14%	9%	11%	6%	16%	18%	12%



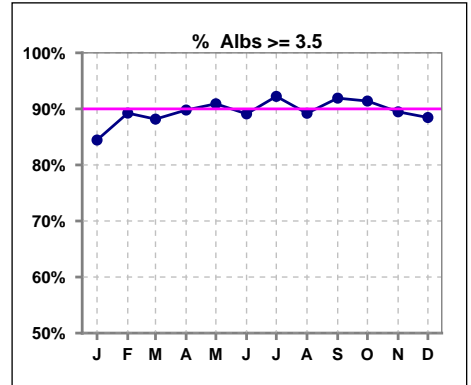
*Albumin values use BCG method - as of July 2001

II. NUTRITION

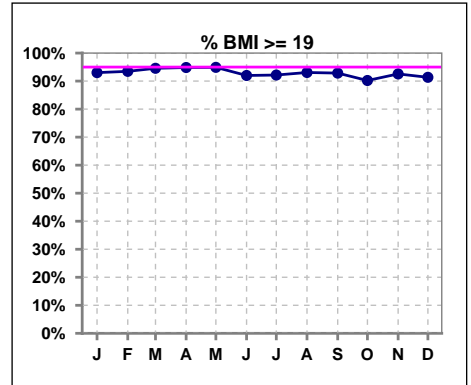
	Jan	Feb	Mar	Apr	May	Jun	Jul	Aug	Sep	Oct	Nov	Dec
# Albumin	90	93	93	98	99	101	103	102	99	93	95	104
# Albumin >= 4.0	40	45	43	52	55	47	53	46	53	47	49	50
Pop. Mean	3.9	3.9	3.9	4.0	4.0	3.9	3.9	3.9	3.9	3.9	3.9	3.9
Std. Deviation	0.44	0.40	0.40	0.37	0.38	0.38	0.35	0.35	0.34	0.37	0.36	0.39
% Alb >= 4.0	44%	48%	46%	53%	56%	47%	51%	45%	54%	51%	52%	48%



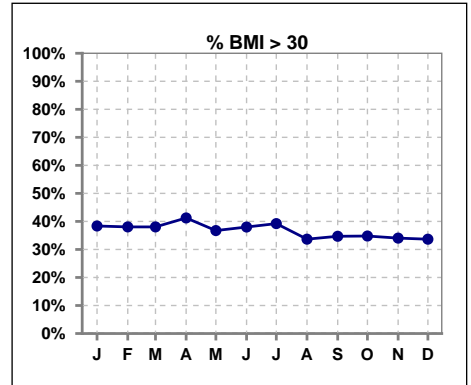
	Jan	Feb	Mar	Apr	May	Jun	Jul	Aug	Sep	Oct	Nov	Dec
# Albumin	90	93	93	98	99	101	103	102	99	93	95	104
# Albumin >= 3.5	76	83	82	88	90	90	95	91	91	85	85	92
Pop. Mean	3.9	3.9	3.9	4.0	4.0	3.9	3.9	3.9	3.9	3.9	3.9	3.9
Std. Deviation	0.44	0.40	0.40	0.37	0.38	0.38	0.35	0.35	0.34	0.37	0.36	0.39
% Alb >= 3.5	84%	89%	88%	90%	91%	89%	92%	89%	92%	91%	89%	88%



	Jan	Feb	Mar	Apr	May	Jun	Jul	Aug	Sep	Oct	Nov	Dec
# BMI	86	92	92	97	99	100	102	102	100	93	94	104
# BMI >= 19	80	86	87	92	93	92	94	94	91	83	87	95
Pop. Mean	29	29	29	29	29	28	29	28	28	28	28	28
Std. Deviation	8.6	8.7	8.6	8.8	8.5	8.3	8.4	8.3	8.1	8.4	8.2	8.0
% BMI >= 19	93%	93%	95%	95%	95%	92%	92%	93%	93%	90%	93%	91%



	Jan	Feb	Mar	Apr	May	Jun	Jul	Aug	Sep	Oct	Nov	Dec
# BMI	86	92	92	97	99	100	102	102	100	93	94	104
# BMI > 30	33	35	35	40	36	38	40	34	34	32	32	35
Pop. Mean	29	29	29	29	29	28	29	28	28	28	28	28
Std. Deviation	8.6	8.7	8.6	8.8	8.5	8.3	8.4	8.3	8.1	8.4	8.2	8.0
% BMI > 30	38%	38%	38%	41%	37%	38%	39%	34%	35%	35%	34%	34%

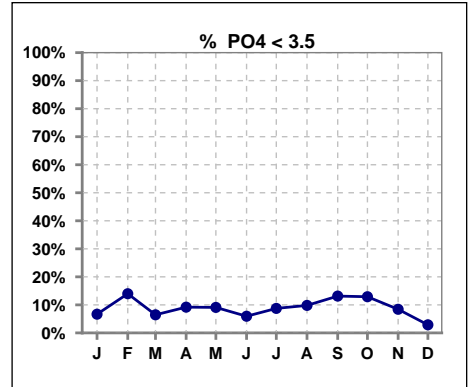


Methodology: a) All labs for 'Adequacy of Dialysis', 'Nutrition', 'Osteodystrophy', 'Anemia' and 'Diabetes' based on last value of month; b) BP's and #L processed are average of all values for month; c) Access data takes last access of month; d) Values for SGA and 'Infection Control' use most recent result.

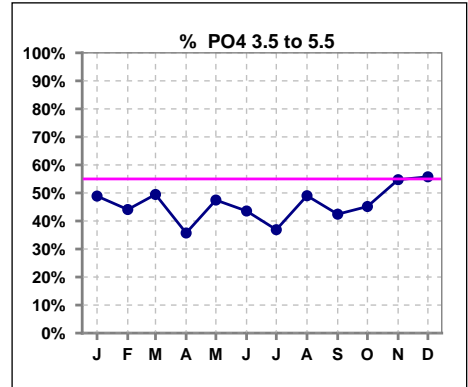
Lab methodology for PTH changed January 2012

III. OSTEODYSTROPHY

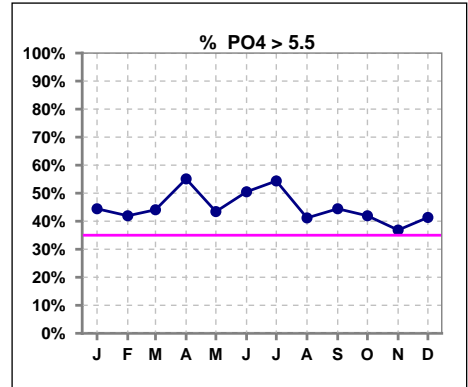
	Jan	Feb	Mar	Apr	May	Jun	Jul	Aug	Sep	Oct	Nov	Dec
# PO4	90	93	93	98	99	101	103	102	99	93	95	104
# PO4 < 3.5	6	13	6	9	9	6	9	10	13	12	8	3
Pop. Mean	5.7	5.5	5.7	6.0	5.7	5.8	5.8	5.4	5.5	5.4	5.5	5.6
Std. Deviation	1.89	1.96	1.88	1.89	1.90	1.90	1.79	1.73	1.82	1.94	1.68	1.68
% PO4 < 3.5	7%	14%	6%	9%	9%	6%	9%	10%	13%	13%	8%	3%



	Jan	Feb	Mar	Apr	May	Jun	Jul	Aug	Sep	Oct	Nov	Dec
# PO4	90	93	93	98	99	101	103	102	99	93	95	104
# PO4 3.5 to 5.5	44	41	46	35	47	44	38	50	42	42	52	58
Pop. Mean	5.7	5.5	5.7	6.0	5.7	5.8	5.8	5.4	5.5	5.4	5.5	5.6
Std. Deviation	1.89	1.96	1.88	1.89	1.90	1.90	1.79	1.73	1.82	1.94	1.68	1.68
% PO4 3.5 to 5.5	49%	44%	49%	36%	47%	44%	37%	49%	42%	45%	55%	56%



	Jan	Feb	Mar	Apr	May	Jun	Jul	Aug	Sep	Oct	Nov	Dec
# PO4	90	93	93	98	99	101	103	102	99	93	95	104
# PO4 > 5.5	40	39	41	54	43	51	56	42	44	39	35	43
Pop. Mean	5.7	5.5	5.7	6.0	5.7	5.8	5.8	5.4	5.5	5.4	5.5	5.6
Std. Deviation	1.89	1.96	1.88	1.89	1.90	1.90	1.79	1.73	1.82	1.94	1.68	1.68
% PO4 > 5.5	44%	42%	44%	55%	43%	50%	54%	41%	44%	42%	37%	41%

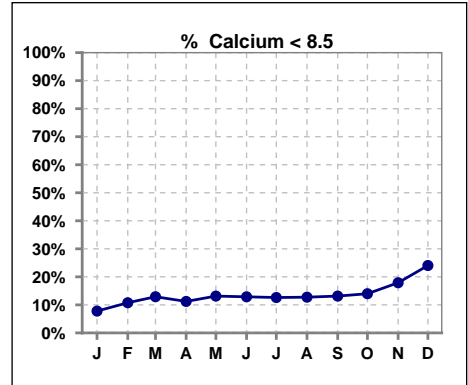


Methodology: a) All labs for 'Adequacy of Dialysis', 'Nutrition', 'Osteodystrophy', 'Anemia' and 'Diabetes' based on last value of month; b) BP's and #L processed are average of all values for month; c) Access data takes last access of month; d) Values for SGA and 'Infection Control' use most recent result.

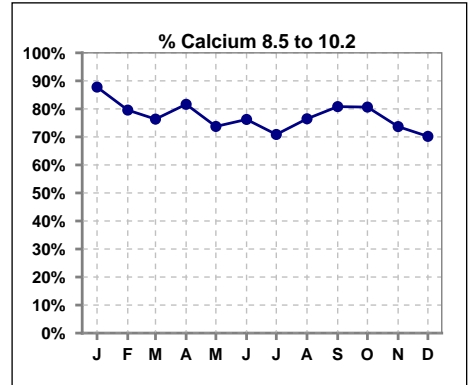
Lab methodology for PTH changed January 2012

III. OSTEODYSTROPHY - CONT.

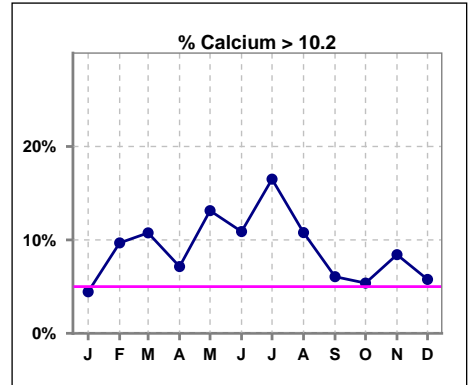
	Jan	Feb	Mar	Apr	May	Jun	Jul	Aug	Sep	Oct	Nov	Dec
# Calcium	90	93	93	98	99	101	103	102	99	93	95	104
# Calcium < 8.5	7	10	12	11	13	13	13	13	13	13	17	25
Pop. Mean	9.2	9.3	9.2	9.2	9.3	9.2	9.3	9.2	9.2	9.1	9.1	8.9
Std. Deviation	0.74	0.77	0.89	0.86	0.88	0.78	0.87	0.83	0.77	0.75	0.86	0.87
% Calcium < 8.5	8%	11%	13%	11%	13%	13%	13%	13%	13%	14%	18%	24%



	Jan	Feb	Mar	Apr	May	Jun	Jul	Aug	Sep	Oct	Nov	Dec
# Calcium	90	93	93	98	99	101	103	102	99	93	95	104
# Calcium 8.5 to 10.2	79	74	71	80	73	77	73	78	80	75	70	73
Pop. Mean	9.2	9.3	9.2	9.2	9.3	9.2	9.3	9.2	9.2	9.1	9.1	8.9
Std. Deviation	0.74	0.77	0.89	0.86	0.88	0.78	0.87	0.83	0.77	0.75	0.86	0.87
% Calcium 8.5 to 10.2	88%	80%	76%	82%	74%	76%	71%	76%	81%	81%	74%	70%



	Jan	Feb	Mar	Apr	May	Jun	Jul	Aug	Sep	Oct	Nov	Dec
# Calcium	90	93	93	98	99	101	103	102	99	93	95	104
# Calcium > 10.2	4	9	10	7	13	11	17	11	6	5	8	6
Pop. Mean	9.2	9.3	9.2	9.2	9.3	9.2	9.3	9.2	9.2	9.1	9.1	8.9
Std. Deviation	0.74	0.77	0.89	0.86	0.88	0.78	0.87	0.83	0.77	0.75	0.86	0.87
% Calcium > 10.2	4%	10%	11%	7%	13%	11%	17%	11%	6%	5%	8%	6%

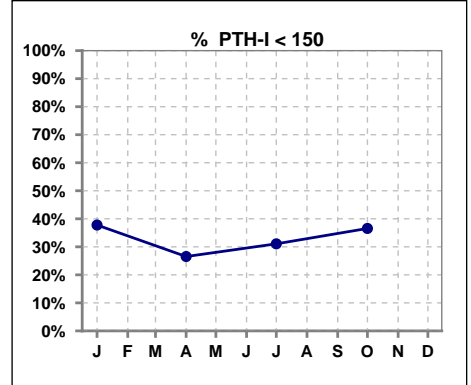


Methodology: a) All labs for 'Adequacy of Dialysis', 'Nutrition', 'Osteodystrophy', 'Anemia' and 'Diabetes' based on last value of month; b) BP's and #L processed are average of all values for month; c) Access data takes last access of month; d) Values for SGA and 'Infection Control' use most recent result.

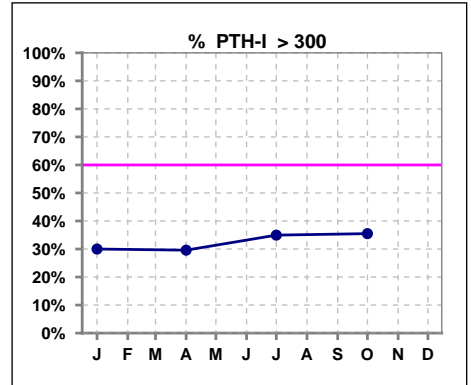
Lab methodology for PTH changed January 2012

III. OSTEODYSTROPHY - CONT.

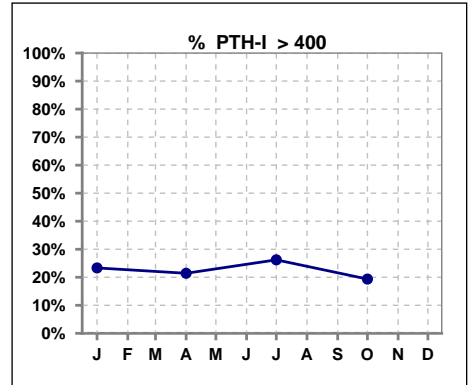
	Jan	Feb	Mar	Apr	May	Jun	Jul	Aug	Sep	Oct	Nov	Dec
# PTH-I	90			98			103			93		
# PTH-I < 150	34			26			32			34		
Pop. Mean	303			319			302			269		
Std. Deviation	321			369			284			233		
% PTH-I < 150	38%			27%			31%			37%		



	Jan	Feb	Mar	Apr	May	Jun	Jul	Aug	Sep	Oct	Nov	Dec
# PTH-I	90			98			103			93		
# PTH-I > 300	27			29			36			33		
Pop. Mean	303			319			302			269		
Std. Deviation	321			369			284			233		
% PTH-I > 300	30%			30%			35%			35%		



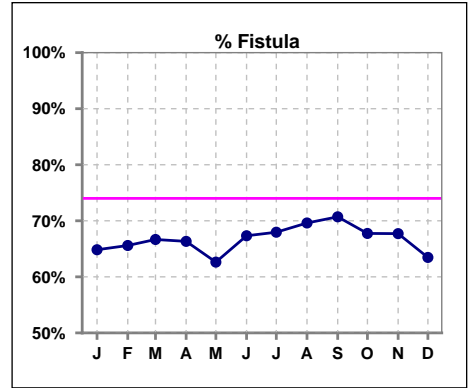
	Jan	Feb	Mar	Apr	May	Jun	Jul	Aug	Sep	Oct	Nov	Dec
# PTH-I	90			98			103			93		
# PTH-I > 400	21			21			27			18		
Pop. Mean	303			319			302			269		
Std. Deviation	321			369			284			233		
% PTH-I > 400	23%			21%			26%			19%		



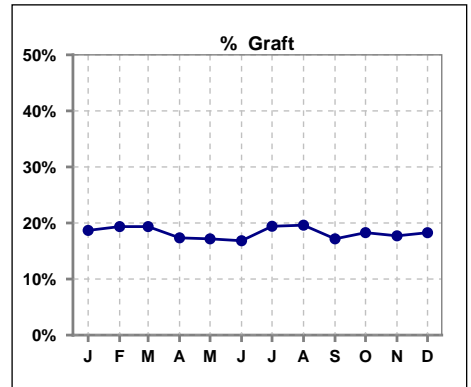
Methodology: a) All labs for 'Adequacy of Dialysis', 'Nutrition', 'Osteodystrophy', 'Anemia' and 'Diabetes' based on last value of month; b) BP's and #L processed are average of all values for month; c) Access data takes last access of month; d) Values for SGA and 'Infection Control' use most recent result.

IV. ACCESS

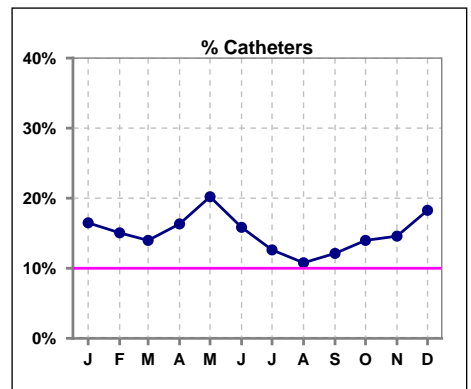
	Jan	Feb	Mar	Apr	May	Jun	Jul	Aug	Sep	Oct	Nov	Dec
# Access	91	93	93	98	99	101	103	102	99	93	96	104
# Fistula	59	61	62	65	62	68	70	71	70	63	65	66
% Fistula	65%	66%	67%	66%	63%	67%	68%	70%	71%	68%	68%	63%



	Jan	Feb	Mar	Apr	May	Jun	Jul	Aug	Sep	Oct	Nov	Dec
# Access	91	93	93	98	99	101	103	102	99	93	96	104
# Graft	17	18	18	17	17	17	20	20	17	17	17	19
% Graft	19%	19%	19%	17%	17%	17%	19%	20%	17%	18%	18%	18%



	Jan	Feb	Mar	Apr	May	Jun	Jul	Aug	Sep	Oct	Nov	Dec
# Access	91	93	93	98	99	101	103	102	99	93	96	104
# Catheters	15	14	13	16	20	16	13	11	12	13	14	19
% Catheters	16%	15%	14%	16%	20%	16%	13%	11%	12%	14%	15%	18%



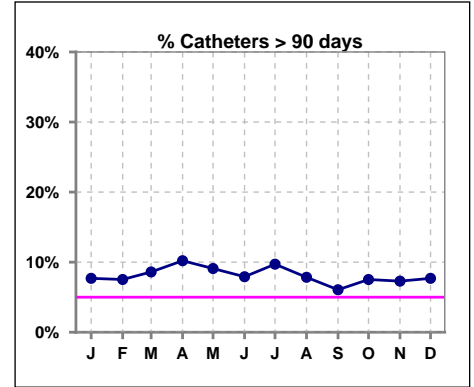
Methodology: a) All labs for 'Adequacy of Dialysis', 'Nutrition', 'Osteodystrophy', 'Anemia' and 'Diabetes' based on last value of month; b) BP's and #L processed are average of all values for month; c) Access data takes last access of month; d) Values for SGA and 'Infection Control' use most recent result.

IV. ACCESS - CONT.

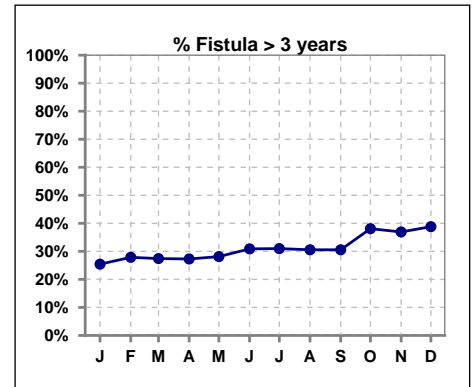
Catheters > 90 days

	Jan	Feb	Mar	Apr	May	Jun	Jul	Aug	Sep	Oct	Nov	Dec
# Access	91	93	93	98	99	101	103	102	99	93	96	104
# Catheters	7	7	8	10	9	8	10	8	6	7	7	8
% Catheters	8%	8%	9%	10%	9%	8%	10%	8%	6%	8%	7%	8%

Definition: Catheter in use on last treatment of the month



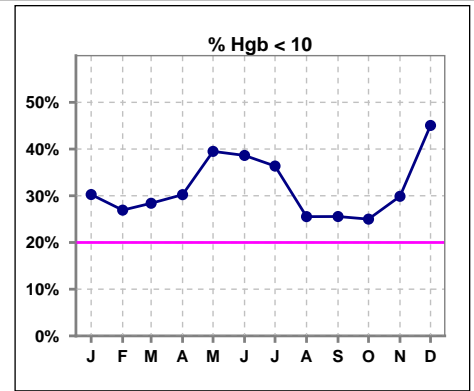
	Jan	Feb	Mar	Apr	May	Jun	Jul	Aug	Sep	Oct	Nov	Dec
# Fistula	59	61	62	66	64	68	71	72	72	63	65	67
# Fistula > 3 yrs	15	17	17	18	18	21	22	22	22	24	24	26
% Fistula > 3 yrs	25%	28%	27%	27%	28%	31%	31%	31%	31%	38%	37%	39%



V. ANEMIA

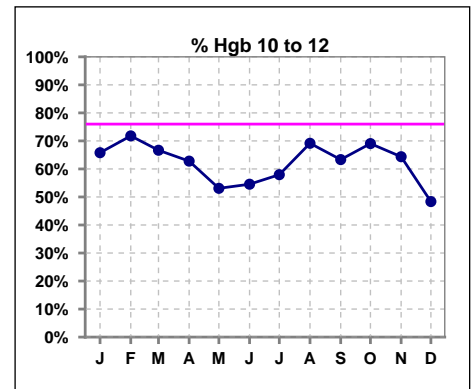
	Jan	Feb	Mar	Apr	May	Jun	Jul	Aug	Sep	Oct	Nov	Dec
# Hgb	76	78	81	86	81	88	88	94	90	84	87	91
# Hgb < 10	23	21	23	26	32	34	32	24	23	21	26	41
Pop. Mean	10.4	10.4	10.4	10.5	10.4	10.3	10.3	10.5	10.7	10.4	10.4	10.1
Std. Deviation	1.3	1.3	1.1	1.0	1.2	1.1	1.1	1.2	1.2	1.1	1.2	1.2
% Hgb < 10	30%	27%	28%	30%	40%	39%	36%	26%	26%	25%	30%	45%

Note: Excludes patients who received no ESA in month.



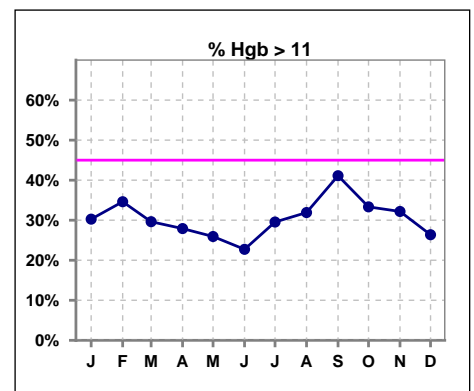
	Jan	Feb	Mar	Apr	May	Jun	Jul	Aug	Sep	Oct	Nov	Dec
# Hgb	76	78	81	86	81	88	88	94	90	84	87	91
# Hgb 10 to 12	50	56	54	54	43	48	51	65	57	58	56	44
Pop. Mean	10.4	10.4	10.4	10.5	10.4	10.3	10.3	10.5	10.7	10.4	10.4	10.1
Std. Deviation	1.3	1.3	1.1	1.0	1.2	1.1	1.1	1.2	1.2	1.1	1.2	1.2
% Hgb 10 to 12	66%	72%	67%	63%	53%	55%	58%	69%	63%	69%	64%	48%

Note: Excludes patients who received no ESA in month.



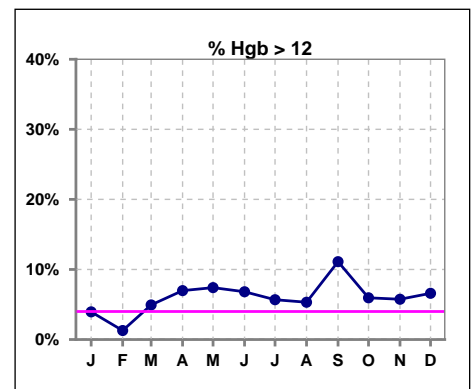
	Jan	Feb	Mar	Apr	May	Jun	Jul	Aug	Sep	Oct	Nov	Dec
# Hgb	76	78	81	86	81	88	88	94	90	84	87	91
# Hgb > 11	23	27	24	24	21	20	26	30	37	28	28	24
Pop. Mean	10.4	10.4	10.4	10.5	10.4	10.3	10.3	10.5	10.7	10.4	10.4	10.1
Std. Deviation	1.3	1.3	1.1	1.0	1.2	1.1	1.1	1.2	1.2	1.1	1.2	1.2
% Hgb > 11	30%	35%	30%	28%	26%	23%	30%	32%	41%	33%	32%	26%

Note: Excludes patients who received no ESA in month.



	Jan	Feb	Mar	Apr	May	Jun	Jul	Aug	Sep	Oct	Nov	Dec
# Hgb	76	78	81	86	81	88	88	94	90	84	87	91
# Hgb > 12	3	1	4	6	6	6	5	5	10	5	5	6
Pop. Mean	10.4	10.4	10.4	10.5	10.4	10.3	10.3	10.5	10.7	10.4	10.4	10.1
Std. Deviation	1.3	1.3	1.1	1.0	1.2	1.1	1.1	1.2	1.2	1.1	1.2	1.2
% Hgb > 12	4%	1%	5%	7%	7%	7%	6%	5%	11%	6%	6%	7%

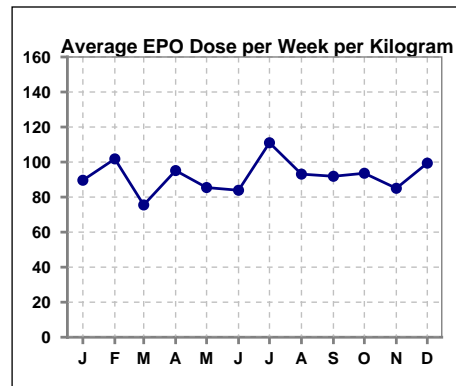
Note: Excludes patients who received no ESA in month.



V. ANEMIA - CONT.

Average EPO Dose per Week per Kilogram

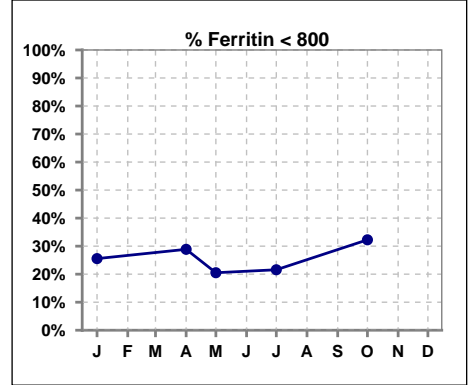
	Jan	Feb	Mar	Apr	May	Jun	Jul	Aug	Sep	Oct	Nov	Dec
# Average EPO	89.6	101.8	75.5	95.1	85.4	83.9	111.0	93.1	91.9	93.6	85.0	99.4



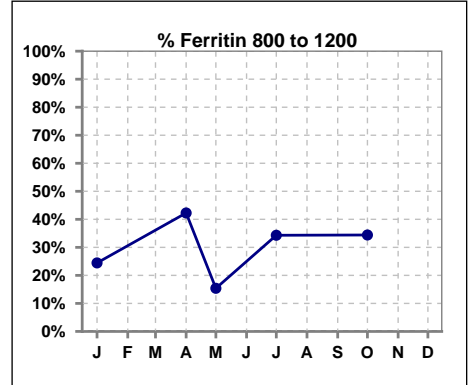
V. ANEMIA - CONT.

Iron Profile

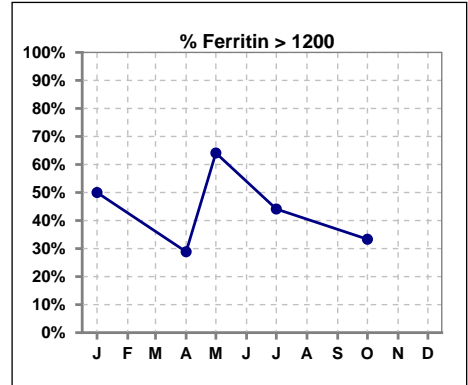
	Jan	Feb	Mar	Apr	May	Jun	Jul	Aug	Sep	Oct	Nov	Dec
# Ferritin	90			97	39		102			93		
# Ferritin < 800	23			28	8		22			30		
Pop. Mean	1168			1057	1370		1192			1040		
Std. Deviation	558			516	621		499			449		
% Ferritin < 800	26%			29%	21%		22%			32%		



	Jan	Feb	Mar	Apr	May	Jun	Jul	Aug	Sep	Oct	Nov	Dec
# Ferritin	90			97	39		102			93		
# Ferritin 800 to 1200	22			41	6		35			32		
Pop. Mean	1168			1057	1370		1192			1040		
Std. Deviation	558			516	621		499			449		
% Ferritin 800 to 1200	24%			42%	15%		34%			34%		

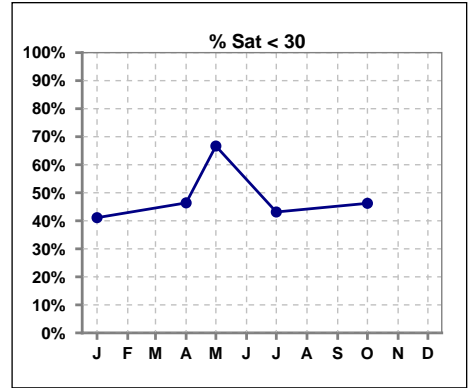


	Jan	Feb	Mar	Apr	May	Jun	Jul	Aug	Sep	Oct	Nov	Dec
# Ferritin	90			97	39		102			93		
# Ferritin > 1200	45			28	25		45			31		
Pop. Mean	1168			1057	1370		1192			1040		
Std. Deviation	558			516	621		499			449		
% Ferritin > 1200	50%			29%	64%		44%			33%		

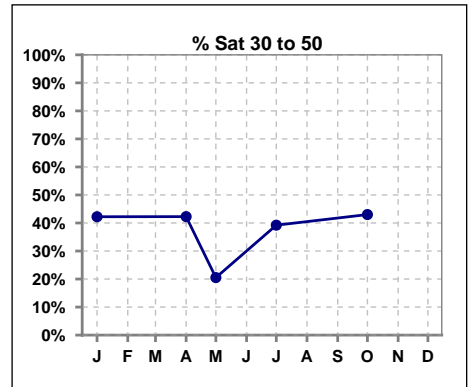


V. ANEMIA - CONT.

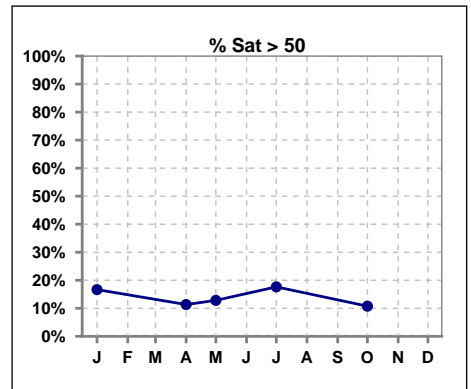
	Jan	Feb	Mar	Apr	May	Jun	Jul	Aug	Sep	Oct	Nov	Dec
# % Sat	90			97	39		102			93		
# % Sat < 30	37			45	26		44			43		
Pop. Mean	35			33	30		36			33		
Std. Deviation	18			16	17		19			15		
% % Sat < 30	41%			46%	67%		43%			46%		



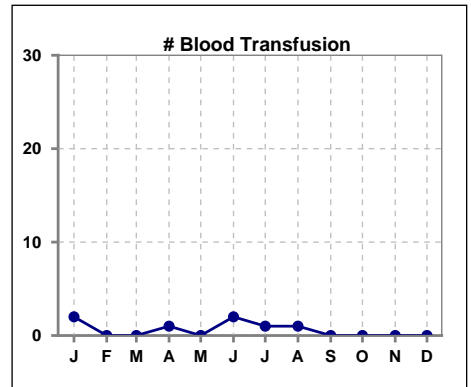
	Jan	Feb	Mar	Apr	May	Jun	Jul	Aug	Sep	Oct	Nov	Dec
# % Sat	90			97	39		102			93		
# % Sat 30 to 50	38			41	8		40			40		
Pop. Mean	35			33	30		36			33		
Std. Deviation	18			16	17		19			15		
% % Sat 30 to 50	42%			42%	21%		39%			43%		



	Jan	Feb	Mar	Apr	May	Jun	Jul	Aug	Sep	Oct	Nov	Dec
# % Sat	90			97	39		102			93		
# % Sat > 50	15			11	5		18			10		
Pop. Mean	35			33	30		36			33		
Std. Deviation	18			16	17		19			15		
% % Sat > 50	17%			11%	13%		18%			11%		

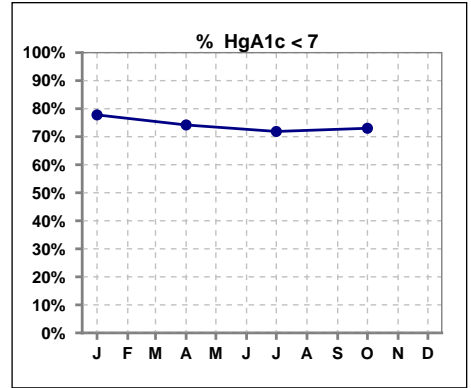


	Jan	Feb	Mar	Apr	May	Jun	Jul	Aug	Sep	Oct	Nov	Dec
# Patient	87	92	93	98	100	101	103	103	101	94	96	104
# Blood Transfusion	2	0	0	1	0	2	1	1	0	0	0	0



VI. Diabetes

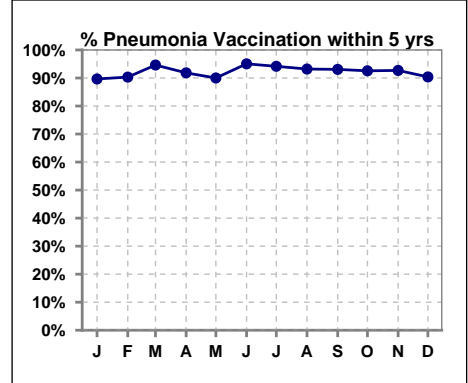
	Jan	Feb	Mar	Apr	May	Jun	Jul	Aug	Sep	Oct	Nov	Dec
# HgA1c	54			62			64			63		
# HgA1c < 7	42			46			46			46		
Pop. Mean	6.3			6.4			6.6			6.6		
Std. Deviation	1.28			1.19			1.52			1.48		
% HgA1c < 7	78%			74%			72%			73%		



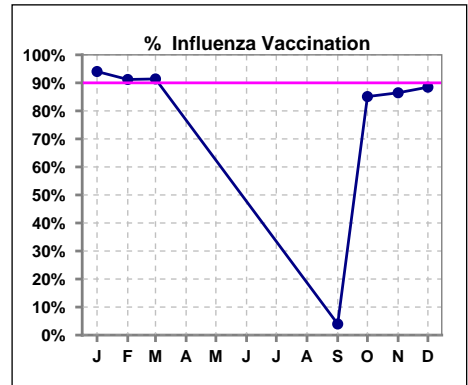
VII. Infection Control

Pneumonia vaccination within the past five years

	Jan	Feb	Mar	Apr	May	Jun	Jul	Aug	Sep	Oct	Nov	Dec
# Patient	87	93	93	98	100	101	103	103	101	94	96	104
# Pneumonia	78	84	88	90	90	96	97	96	94	87	89	94
% Pneumonia	90%	90%	95%	92%	90%	95%	94%	93%	93%	93%	93%	90%



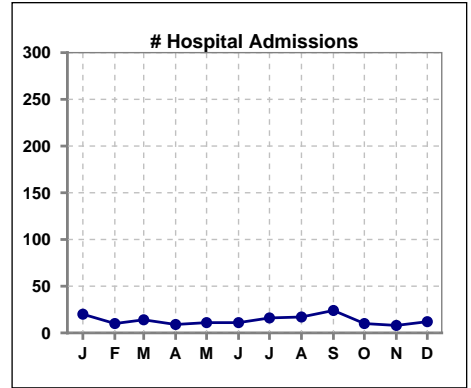
	Jan	Feb	Mar	Apr	May	Jun	Jul	Aug	Sep	Oct	Nov	Dec
# Patient	84	91	93						101	94	96	104
# Influenza	79	83	85						4	80	83	92
% Influenza	94%	91%	91%						4%	85%	86%	88%



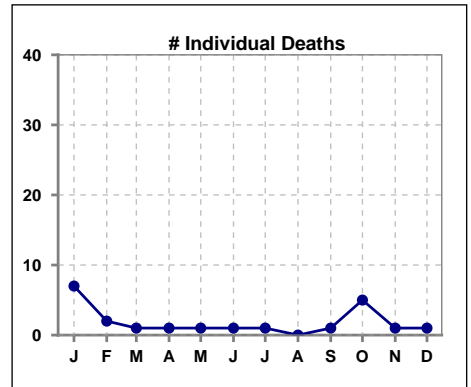
Methodology: a) All labs for 'Adequacy of Dialysis', 'Nutrition', 'Osteodystrophy', 'Anemia' and 'Diabetes' based on last value of month; b) BP's and #L processed are average of all values for month; c) Access data takes last access of month; d) Values for SGA and 'Infection Control' use most recent result.

VIII. Misc

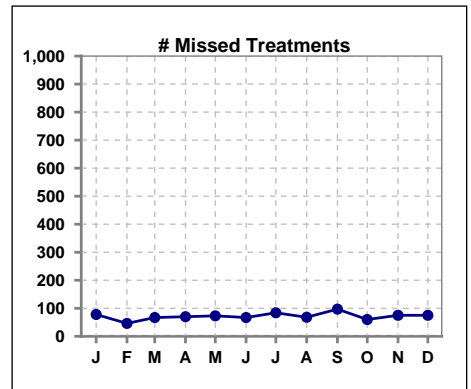
	Jan	Feb	Mar	Apr	May	Jun	Jul	Aug	Sep	Oct	Nov	Dec
# Patient	87	92	93	98	100	101	103	103	101	94	96	104
# Hospital Admissions	20	10	14	9	11	11	16	17	24	10	8	12



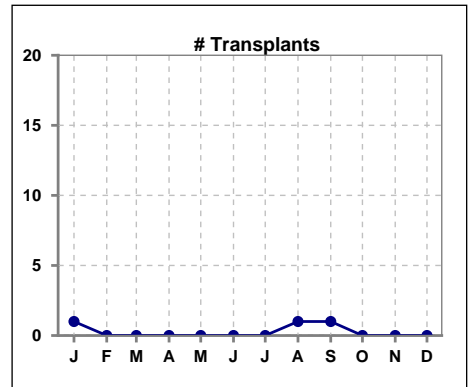
	Jan	Feb	Mar	Apr	May	Jun	Jul	Aug	Sep	Oct	Nov	Dec
# Patient	87	92	93	98	100	101	103	103	101	94	96	104
# Individual Deaths	7	2	1	1	1	1	1	0	1	5	1	1



	Jan	Feb	Mar	Apr	May	Jun	Jul	Aug	Sep	Oct	Nov	Dec
# Patient	87	92	93	98	100	101	103	103	101	94	96	104
# Missed Treatments	78	46	67	70	73	67	84	68	97	60	75	75



	Jan	Feb	Mar	Apr	May	Jun	Jul	Aug	Sep	Oct	Nov	Dec
# Patient	87	92	93	98	100	101	103	103	101	94	96	104
# Transplants	1	0	0	0	0	0	0	1	1	0	0	0



Methodology: a) All labs for 'Adequacy of Dialysis', 'Nutrition', 'Osteodystrophy', 'Anemia' and 'Diabetes' based on last value of month; b) BP's and #L processed are average of all values for month; c) Access data takes last access of month; d) Values for SGA and 'Infection Control' use most recent result.