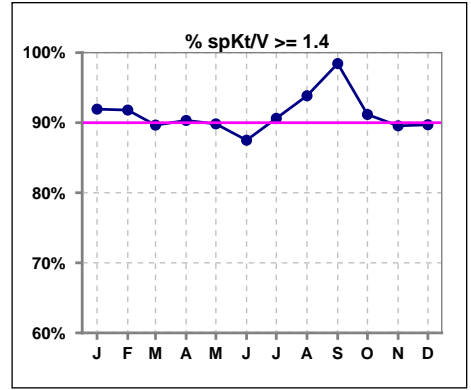
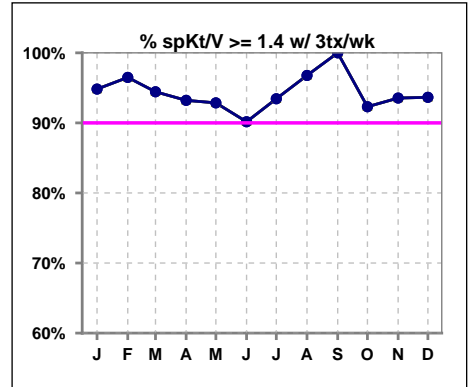


I. ADEQUACY OF DIALYSIS

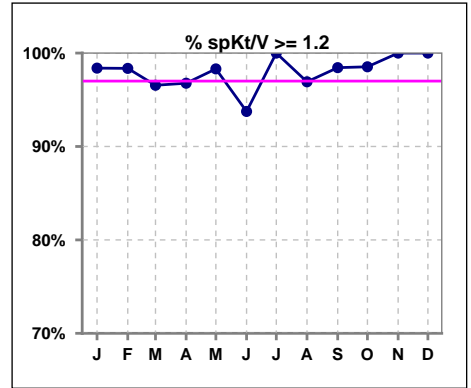
	Jan	Feb	Mar	Apr	May	Jun	Jul	Aug	Sep	Oct	Nov	Dec
# spKt/V	62	61	58	62	59	64	64	65	64	68	67	68
# spKt/V >= 1.4	57	56	52	56	53	56	58	61	63	62	60	61
Pop. Mean	1.79	1.75	1.72	1.73	1.74	1.72	1.74	1.81	1.80	1.76	1.74	1.76
Std. Deviation	0.32	0.29	0.29	0.28	0.32	0.36	0.29	0.33	0.30	0.29	0.28	0.31
% spKt/V >= 1.4	92%	92%	90%	90%	90%	88%	91%	94%	98%	91%	90%	90%



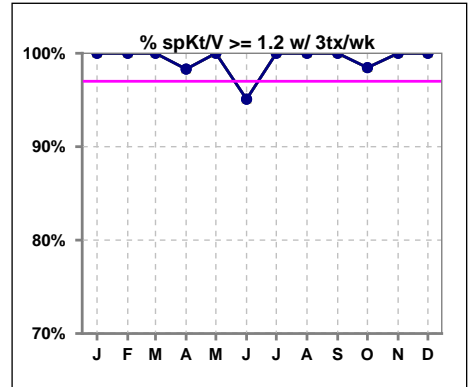
	Jan	Feb	Mar	Apr	May	Jun	Jul	Aug	Sep	Oct	Nov	Dec
# spKt/V w/ 3tx/wk	58	57	54	59	56	61	61	62	62	65	62	63
# spKt/V >= 1.4 w/3tx/wk	55	55	51	55	52	55	57	60	62	60	58	59
Pop. Mean	1.82	1.79	1.76	1.75	1.77	1.74	1.75	1.84	1.82	1.77	1.76	1.77
Std. Deviation	0.31	0.26	0.25	0.27	0.29	0.33	0.28	0.30	0.27	0.29	0.27	0.31
% >= 1.4 w/3tx/wk	95%	96%	94%	93%	93%	90%	93%	97%	100%	92%	94%	94%



	Jan	Feb	Mar	Apr	May	Jun	Jul	Aug	Sep	Oct	Nov	Dec
# spKt/V	62	61	58	62	59	64	64	65	64	68	67	68
# spKt/V >= 1.2	61	60	56	60	58	60	64	63	63	67	67	68
Pop. Mean	1.79	1.75	1.72	1.73	1.74	1.72	1.74	1.81	1.80	1.76	1.74	1.76
Std. Deviation	0.32	0.29	0.29	0.28	0.32	0.36	0.29	0.33	0.30	0.29	0.28	0.31
% spKt/V >= 1.2	98%	98%	97%	97%	98%	94%	100%	97%	98%	99%	100%	100%



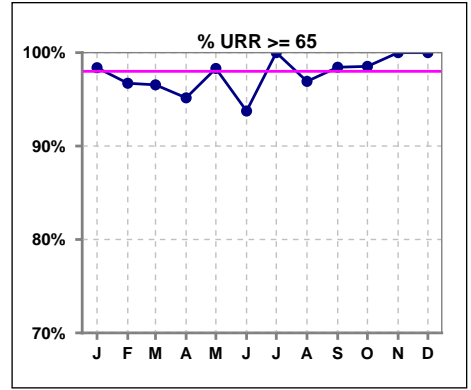
	Jan	Feb	Mar	Apr	May	Jun	Jul	Aug	Sep	Oct	Nov	Dec
# spKt/V w/ 3tx/wk	58	57	54	59	56	61	61	62	62	65	62	63
# spKt/V >= 1.2 w/3tx/wk	58	57	54	58	56	58	61	62	62	64	62	63
Pop. Mean	1.82	1.79	1.76	1.75	1.77	1.74	1.75	1.84	1.82	1.77	1.76	1.77
Std. Deviation	0.31	0.26	0.25	0.27	0.29	0.33	0.28	0.30	0.27	0.29	0.27	0.31
% >= 1.2 w/3tx/wk	100%	100%	100%	98%	100%	95%	100%	100%	100%	98%	100%	100%



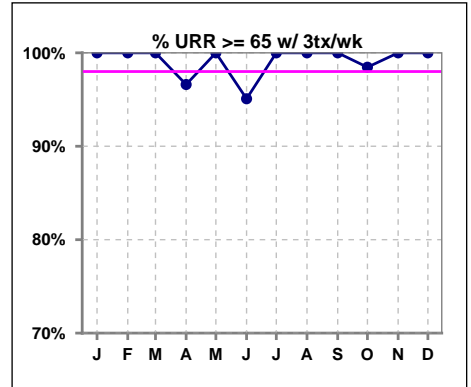
Methodology: a) All labs for 'Adequacy of Dialysis', 'Nutrition', 'Osteodystrophy', 'Anemia' and 'Diabetes' based on last value of month; b) BP's and #L processed are average of all values for month; c) Access data takes last access of month; d) Values for SGA and 'Infection Control' use most recent result.

I. ADEQUACY OF DIALYSIS - CONT.

	Jan	Feb	Mar	Apr	May	Jun	Jul	Aug	Sep	Oct	Nov	Dec
# URR	62	61	58	62	59	64	64	65	64	68	67	68
# URR >= 65	61	59	56	59	58	60	64	63	63	67	67	68
Pop. Mean	78	77	77	77	77	76	77	78	78	77	77	78
Std. Deviation	5.48	5.60	6.19	5.67	6.83	8.18	4.92	5.99	5.66	5.40	4.75	5.40
% URR >= 65	98%	97%	97%	95%	98%	94%	100%	97%	98%	99%	100%	100%



	Jan	Feb	Mar	Apr	May	Jun	Jul	Aug	Sep	Oct	Nov	Dec
# URR w/ 3tx/wk	58	57	54	59	56	61	61	62	62	65	62	63
# URR >=65 w/ 3tx/wk	58	57	54	57	56	58	61	62	62	64	62	63
Pop. Mean	78	78	78	77	77	77	77	79	79	78	78	78
Std. Deviation	4.91	4.36	4.43	5.17	5.10	6.71	4.72	4.36	4.40	5.37	4.45	5.18
% URR >=65 w/ 3tx/wk	100%	100%	100%	97%	100%	95%	100%	100%	100%	98%	100%	100%

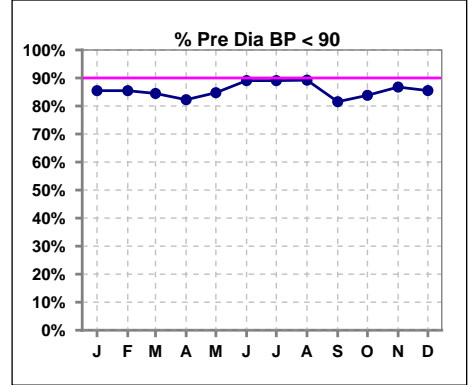


Methodology: a) All labs for 'Adequacy of Dialysis', 'Nutrition', 'Osteodystrophy', 'Anemia' and 'Diabetes' based on last value of month; b) BP's and #L processed are average of all values for month; c) Access data takes last access of month; d) Values for SGA and 'Infection Control' use most recent result.

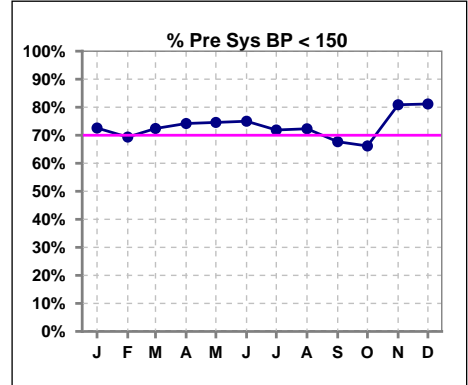
I. ADEQUACY OF DIALYSIS - CONT.

Blood Pressure Control (Pre)

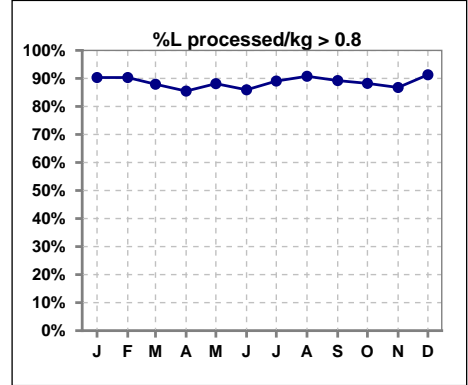
	Jan	Feb	Mar	Apr	May	Jun	Jul	Aug	Sep	Oct	Nov	Dec
# Pre Dia BP	62	62	58	62	59	64	64	65	65	68	68	69
# Pre Dia BP < 90	53	53	49	51	50	57	57	58	53	57	59	59
Pop. Mean	76	76	77	77	77	75	76	75	76	77	75	76
Std. Deviation	12.6	14.6	12.1	12.7	12.4	13.3	13.0	11.8	12.6	13.5	12.9	11.8
% Pre Dia BP < 90	85%	85%	84%	82%	85%	89%	89%	89%	82%	84%	87%	86%



	Jan	Feb	Mar	Apr	May	Jun	Jul	Aug	Sep	Oct	Nov	Dec
# Pre Sys BP	62	62	58	62	59	64	64	65	65	68	68	69
# Pre Sys BP < 150	45	43	42	46	44	48	46	47	44	45	55	56
Pop. Mean	140	139	139	140	137	135	135	135	137	139	134	137
Std. Deviation	18.5	19.3	18.7	19.6	18.1	19.7	18.8	19.9	20.0	20.9	20.1	17.8
%Pre Sys BP <150	73%	69%	72%	74%	75%	75%	72%	72%	68%	66%	81%	81%



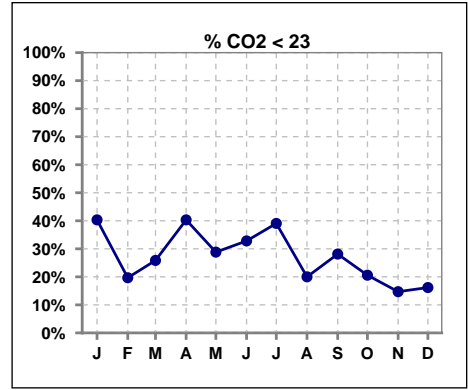
	Jan	Feb	Mar	Apr	May	Jun	Jul	Aug	Sep	Oct	Nov	Dec
# L processed/kg	62	62	58	62	59	64	64	65	65	68	68	69
# L processed/kg>0.8	56	56	51	53	52	55	57	59	58	60	59	63
Pop. Mean	1	1	1	1	1	1	1	1	1	1	1	1
Std. Deviation	0.3	0.3	0.3	0.3	0.3	0.3	0.3	0.3	0.3	0.3	0.3	0.3
% L processed/kg>0.8	90%	90%	88%	85%	88%	86%	89%	91%	89%	88%	87%	91%



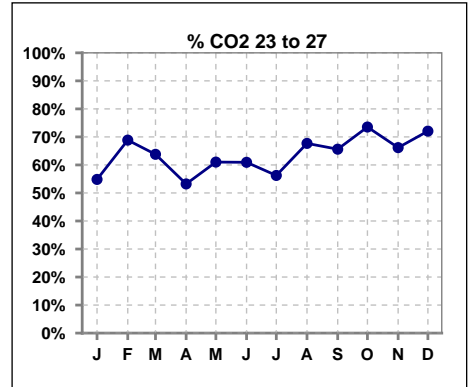
Methodology: a) All labs for 'Adequacy of Dialysis', 'Nutrition', 'Osteodystrophy', 'Anemia' and 'Diabetes' based on last value of month; b) BP's and #L processed are average of all values for month; c) Access data takes last access of month; d) Values for SGA and 'Infection Control' use most recent result.

I. ADEQUACY OF DIALYSIS - CONT.

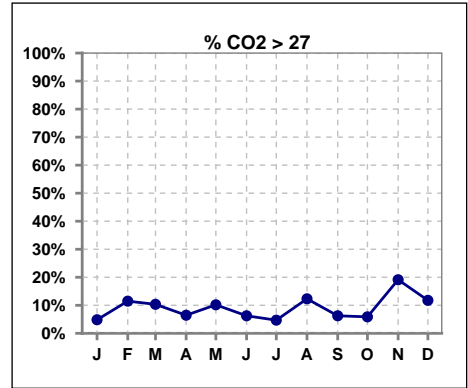
	Jan	Feb	Mar	Apr	May	Jun	Jul	Aug	Sep	Oct	Nov	Dec
# CO2	62	61	58	62	59	64	64	65	64	68	68	68
# CO2 < 23	25	12	15	25	17	21	25	13	18	14	10	11
Pop. Mean	23	24	24	23	24	23	23	24	24	24	25	25
Std. Deviation	2.44	2.49	2.68	3.02	3.18	2.50	2.99	2.67	2.57	2.58	2.79	2.34
% CO2 < 23	40%	20%	26%	40%	29%	33%	39%	20%	28%	21%	15%	16%



	Jan	Feb	Mar	Apr	May	Jun	Jul	Aug	Sep	Oct	Nov	Dec
# CO2	62	61	58	62	59	64	64	65	64	68	68	68
# CO2 23 to 27	34	42	37	33	36	39	36	44	42	50	45	49
Pop. Mean	23	24	24	23	24	23	23	24	24	24	25	25
Std. Deviation	2.44	2.49	2.68	3.02	3.18	2.50	2.99	2.67	2.57	2.58	2.79	2.34
% CO2 23 to 27	55%	69%	64%	53%	61%	61%	56%	68%	66%	74%	66%	72%



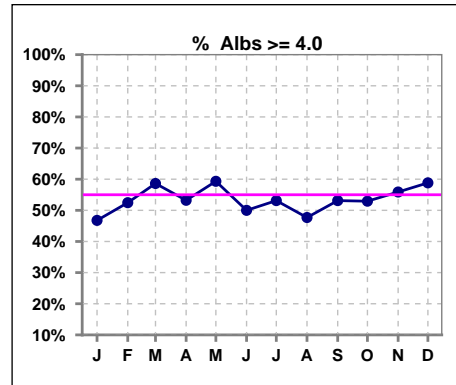
	Jan	Feb	Mar	Apr	May	Jun	Jul	Aug	Sep	Oct	Nov	Dec
# CO2	62	61	58	62	59	64	64	65	64	68	68	68
# CO2 > 27	3	7	6	4	6	4	3	8	4	4	13	8
Pop. Mean	23	24	24	23	24	23	23	24	24	24	25	25
Std. Deviation	2.44	2.49	2.68	3.02	3.18	2.50	2.99	2.67	2.57	2.58	2.79	2.34
% CO2 > 27	5%	11%	10%	6%	10%	6%	5%	12%	6%	6%	19%	12%



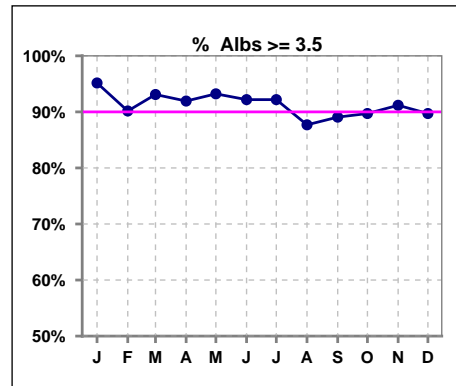
*Albumin values use BCG method - as of July 2001

II. NUTRITION

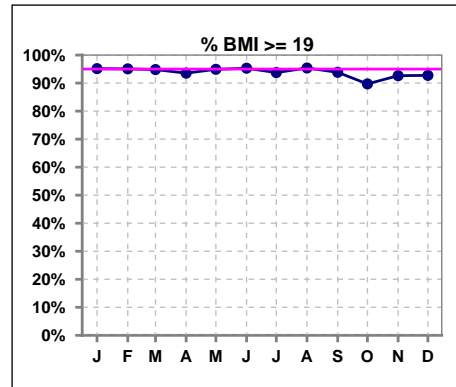
	Jan	Feb	Mar	Apr	May	Jun	Jul	Aug	Sep	Oct	Nov	Dec
# Albumin	62	61	58	62	59	64	64	65	64	68	68	68
# Albumin >= 4.0	29	32	34	33	35	32	34	31	34	36	38	40
Pop. Mean	3.9	4.0	4.0	4.0	4.0	3.9	3.9	3.9	3.9	3.9	3.9	4.0
Std. Deviation	0.29	0.39	0.33	0.34	0.33	0.30	0.29	0.33	0.35	0.41	0.40	0.37
% Alb >= 4.0	47%	52%	59%	53%	59%	50%	53%	48%	53%	53%	56%	59%



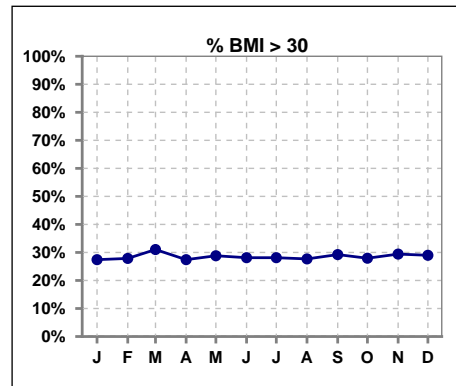
	Jan	Feb	Mar	Apr	May	Jun	Jul	Aug	Sep	Oct	Nov	Dec
# Albumin	62	61	58	62	59	64	64	65	64	68	68	68
# Albumin >= 3.5	59	55	54	57	55	59	59	57	57	61	62	61
Pop. Mean	3.9	4.0	4.0	4.0	4.0	3.9	3.9	3.9	3.9	3.9	3.9	4.0
Std. Deviation	0.29	0.39	0.33	0.34	0.33	0.30	0.29	0.33	0.35	0.41	0.40	0.37
% Alb >= 3.5	95%	90%	93%	92%	93%	92%	92%	88%	89%	90%	91%	90%



	Jan	Feb	Mar	Apr	May	Jun	Jul	Aug	Sep	Oct	Nov	Dec
# BMI	62	61	59	62	59	64	64	65	65	68	68	69
# BMI >= 19	59	58	55	58	56	61	60	62	61	61	63	64
Pop. Mean	26	26	27	27	27	27	27	27	27	27	27	27
Std. Deviation	5.7	5.7	6.1	5.9	5.9	6.3	6.3	6.2	6.3	6.2	6.3	5.7
% BMI >= 19	95%	95%	95%	94%	95%	95%	94%	95%	94%	90%	93%	93%



	Jan	Feb	Mar	Apr	May	Jun	Jul	Aug	Sep	Oct	Nov	Dec
# BMI	62	61	59	62	59	64	64	65	65	68	68	69
# BMI > 30	17	17	18	17	17	18	18	18	19	19	20	20
Pop. Mean	26	26	27	27	27	27	27	27	27	27	27	27
Std. Deviation	5.7	5.7	6.1	5.9	5.9	6.3	6.3	6.2	6.3	6.2	6.3	5.7
% BMI > 30	27%	28%	31%	27%	29%	28%	28%	28%	29%	28%	29%	29%

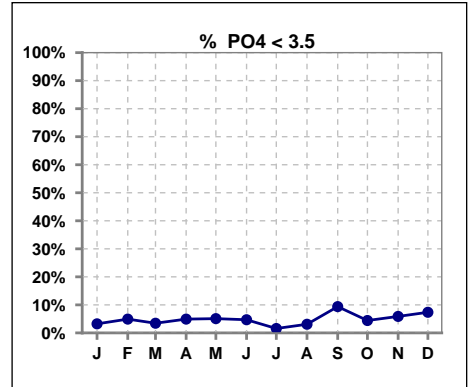


Methodology: a) All labs for 'Adequacy of Dialysis', 'Nutrition', 'Osteodystrophy', 'Anemia' and 'Diabetes' based on last value of month; b) BP's and #L processed are average of all values for month; c) Access data takes last access of month; d) Values for SGA and 'Infection Control' use most recent result.

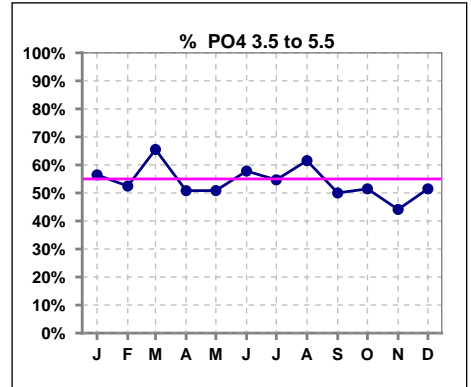
Lab methodology for PTH changed January 2012

III. OSTEODYSTROPHY

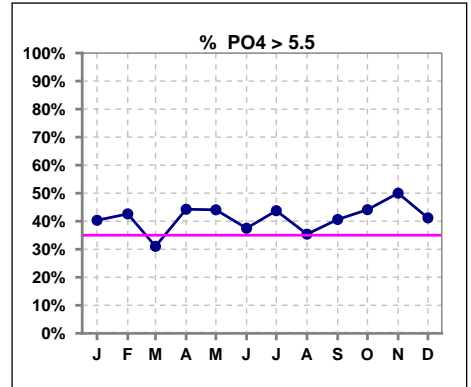
	Jan	Feb	Mar	Apr	May	Jun	Jul	Aug	Sep	Oct	Nov	Dec
# PO4	62	61	58	61	59	64	64	65	64	68	68	68
# PO4 < 3.5	2	3	2	3	3	3	1	2	6	3	4	5
Pop. Mean	5.5	5.4	5.2	5.5	5.6	5.5	5.8	5.5	5.3	5.5	5.6	5.6
Std. Deviation	1.43	1.48	1.31	1.48	1.46	1.70	1.79	1.70	1.56	1.40	1.47	1.61
% PO4 < 3.5	3%	5%	3%	5%	5%	5%	2%	3%	9%	4%	6%	7%



	Jan	Feb	Mar	Apr	May	Jun	Jul	Aug	Sep	Oct	Nov	Dec
# PO4	62	61	58	61	59	64	64	65	64	68	68	68
# PO4 3.5 to 5.5	35	32	38	31	30	37	35	40	32	35	30	35
Pop. Mean	5.5	5.4	5.2	5.5	5.6	5.5	5.8	5.5	5.3	5.5	5.6	5.6
Std. Deviation	1.43	1.48	1.31	1.48	1.46	1.70	1.79	1.70	1.56	1.40	1.47	1.61
% PO4 3.5 to 5.5	56%	52%	66%	51%	51%	58%	55%	62%	50%	51%	44%	51%



	Jan	Feb	Mar	Apr	May	Jun	Jul	Aug	Sep	Oct	Nov	Dec
# PO4	62	61	58	61	59	64	64	65	64	68	68	68
# PO4 > 5.5	25	26	18	27	26	24	28	23	26	30	34	28
Pop. Mean	5.5	5.4	5.2	5.5	5.6	5.5	5.8	5.5	5.3	5.5	5.6	5.6
Std. Deviation	1.43	1.48	1.31	1.48	1.46	1.70	1.79	1.70	1.56	1.40	1.47	1.61
% PO4 > 5.5	40%	43%	31%	44%	44%	38%	44%	35%	41%	44%	50%	41%

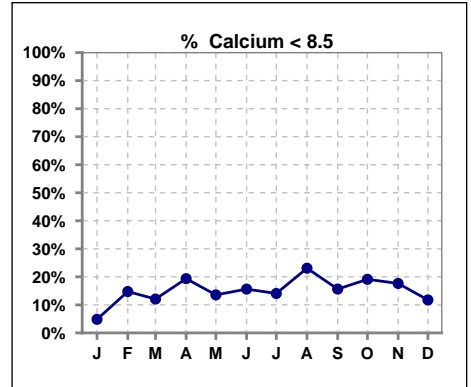


Methodology: a) All labs for 'Adequacy of Dialysis', 'Nutrition', 'Osteodystrophy', 'Anemia' and 'Diabetes' based on last value of month; b) BP's and #L processed are average of all values for month; c) Access data takes last access of month; d) Values for SGA and 'Infection Control' use most recent result.

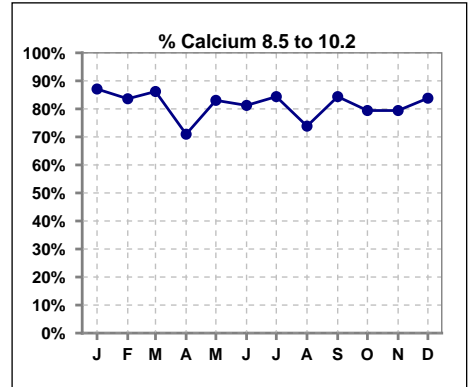
Lab methodology for PTH changed January 2012

III. OSTEODYSTROPHY - CONT.

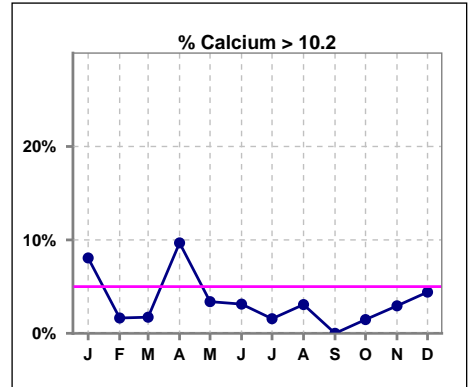
	Jan	Feb	Mar	Apr	May	Jun	Jul	Aug	Sep	Oct	Nov	Dec
# Calcium	62	61	58	62	59	64	64	65	64	68	68	68
# Calcium < 8.5	3	9	7	12	8	10	9	15	10	13	12	8
Pop. Mean	9.4	9.2	9.3	9.2	9.1	9.1	9.1	9.0	9.1	9.1	9.0	9.2
Std. Deviation	0.63	0.67	0.70	0.86	0.73	0.75	0.68	0.91	0.73	0.71	0.63	0.73
% Calcium < 8.5	5%	15%	12%	19%	14%	16%	14%	23%	16%	19%	18%	12%



	Jan	Feb	Mar	Apr	May	Jun	Jul	Aug	Sep	Oct	Nov	Dec
# Calcium	62	61	58	62	59	64	64	65	64	68	68	68
# Calcium 8.5 to 10.2	54	51	50	44	49	52	54	48	54	54	54	57
Pop. Mean	9.4	9.2	9.3	9.2	9.1	9.1	9.1	9.0	9.1	9.1	9.0	9.2
Std. Deviation	0.63	0.67	0.70	0.86	0.73	0.75	0.68	0.91	0.73	0.71	0.63	0.73
% Calcium 8.5 to 10.2	87%	84%	86%	71%	83%	81%	84%	74%	84%	79%	79%	84%



	Jan	Feb	Mar	Apr	May	Jun	Jul	Aug	Sep	Oct	Nov	Dec
# Calcium	62	61	58	62	59	64	64	65	64	68	68	68
# Calcium > 10.2	5	1	1	6	2	2	1	2	0	1	2	3
Pop. Mean	9.4	9.2	9.3	9.2	9.1	9.1	9.1	9.0	9.1	9.1	9.0	9.2
Std. Deviation	0.63	0.67	0.70	0.86	0.73	0.75	0.68	0.91	0.73	0.71	0.63	0.73
% Calcium > 10.2	8%	2%	2%	10%	3%	3%	2%	3%	0%	1%	3%	4%

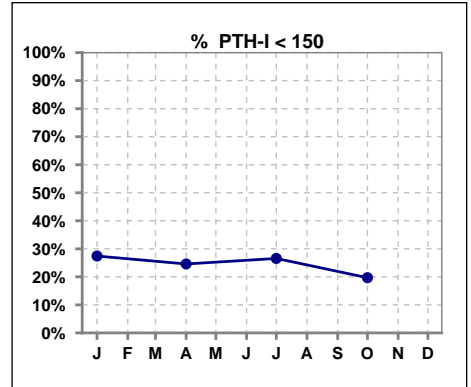


Methodology: a) All labs for 'Adequacy of Dialysis', 'Nutrition', 'Osteodystrophy', 'Anemia' and 'Diabetes' based on last value of month; b) BP's and #L processed are average of all values for month; c) Access data takes last access of month; d) Values for SGA and 'Infection Control' use most recent result.

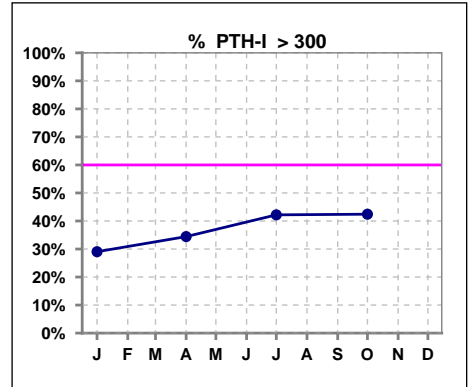
Lab methodology for PTH changed January 2012

III. OSTEODYSTROPHY - CONT.

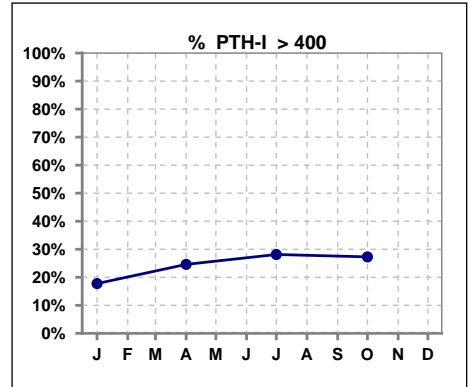
	Jan	Feb	Mar	Apr	May	Jun	Jul	Aug	Sep	Oct	Nov	Dec
# PTH-I	62			61			64			66		
# PTH-I < 150	17			15			17			13		
Pop. Mean	328			333			383			343		
Std. Deviation	392			332			389			301		
% PTH-I < 150	27%			25%			27%			20%		



	Jan	Feb	Mar	Apr	May	Jun	Jul	Aug	Sep	Oct	Nov	Dec
# PTH-I	62			61			64			66		
# PTH-I > 300	18			21			27			28		
Pop. Mean	328			333			383			343		
Std. Deviation	392			332			389			301		
% PTH-I > 300	29%			34%			42%			42%		



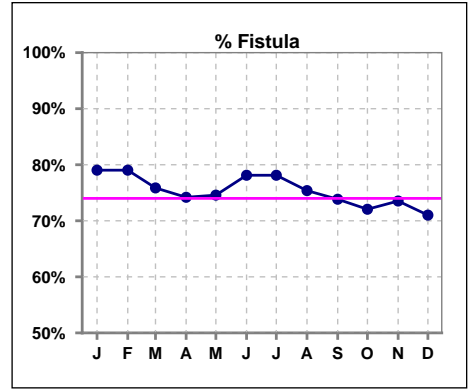
	Jan	Feb	Mar	Apr	May	Jun	Jul	Aug	Sep	Oct	Nov	Dec
# PTH-I	62			61			64			66		
# PTH-I > 400	11			15			18			18		
Pop. Mean	328			333			383			343		
Std. Deviation	392			332			389			301		
% PTH-I > 400	18%			25%			28%			27%		



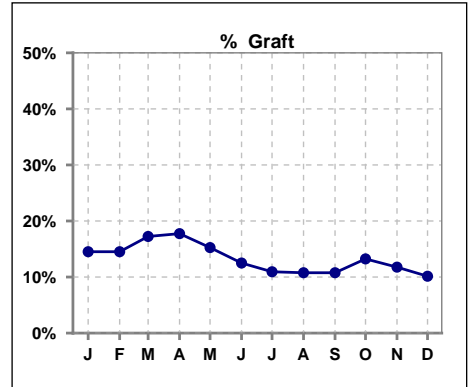
Methodology: a) All labs for 'Adequacy of Dialysis', 'Nutrition', 'Osteodystrophy', 'Anemia' and 'Diabetes' based on last value of month; b) BP's and #L processed are average of all values for month; c) Access data takes last access of month; d) Values for SGA and 'Infection Control' use most recent result.

IV. ACCESS

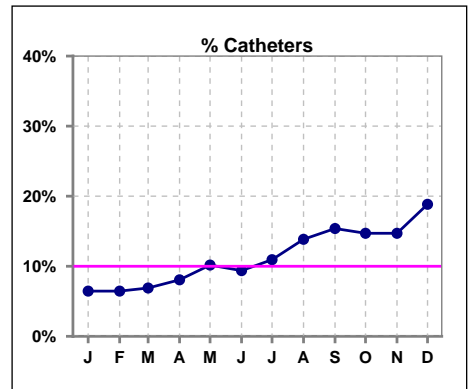
	Jan	Feb	Mar	Apr	May	Jun	Jul	Aug	Sep	Oct	Nov	Dec
# Access	62	62	58	62	59	64	64	65	65	68	68	69
# Fistula	49	49	44	46	44	50	50	49	48	49	50	49
% Fistula	79%	79%	76%	74%	75%	78%	78%	75%	74%	72%	74%	71%



	Jan	Feb	Mar	Apr	May	Jun	Jul	Aug	Sep	Oct	Nov	Dec
# Access	62	62	58	62	59	64	64	65	65	68	68	69
# Graft	9	9	10	11	9	8	7	7	7	9	8	7
% Graft	15%	15%	17%	18%	15%	13%	11%	11%	11%	13%	12%	10%



	Jan	Feb	Mar	Apr	May	Jun	Jul	Aug	Sep	Oct	Nov	Dec
# Access	62	62	58	62	59	64	64	65	65	68	68	69
# Catheters	4	4	4	5	6	6	7	9	10	10	10	13
% Catheters	6%	6%	7%	8%	10%	9%	11%	14%	15%	15%	15%	19%



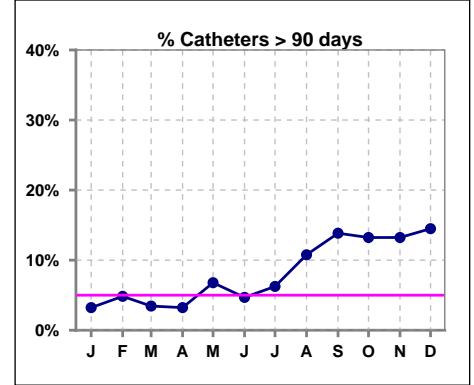
Methodology: a) All labs for 'Adequacy of Dialysis', 'Nutrition', 'Osteodystrophy', 'Anemia' and 'Diabetes' based on last value of month; b) BP's and #L processed are average of all values for month; c) Access data takes last access of month; d) Values for SGA and 'Infection Control' use most recent result.

IV. ACCESS - CONT.

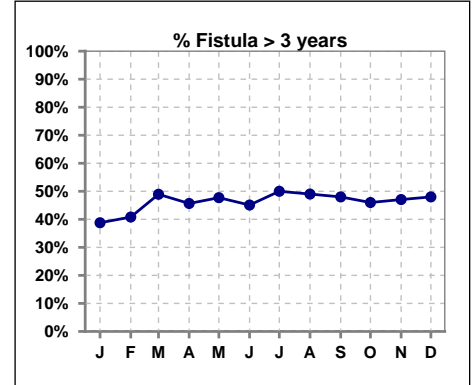
Catheters > 90 days

	Jan	Feb	Mar	Apr	May	Jun	Jul	Aug	Sep	Oct	Nov	Dec
# Access	62	62	58	62	59	64	64	65	65	68	68	69
# Catheters	2	3	2	2	4	3	4	7	9	9	9	10
% Catheters	3%	5%	3%	3%	7%	5%	6%	11%	14%	13%	13%	14%

Definition: Catheter in use on last treatment of the month



	Jan	Feb	Mar	Apr	May	Jun	Jul	Aug	Sep	Oct	Nov	Dec
# Fistula	49	49	47	46	44	51	50	51	50	50	51	50
# Fistula > 3 yrs	19	20	23	21	21	23	25	25	24	23	24	24
% Fistula > 3 yrs	39%	41%	49%	46%	48%	45%	50%	49%	48%	46%	47%	48%

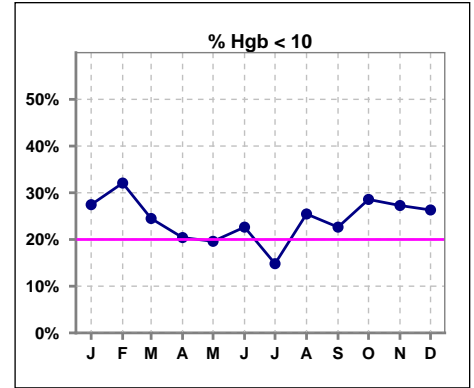


Methodology: a) All labs for 'Adequacy of Dialysis', 'Nutrition', 'Osteodystrophy', 'Anemia' and 'Diabetes' based on last value of month; b) BP's and #L processed are average of all values for month; c) Access data takes last access of month; d) Values for SGA and 'Infection Control' use most recent result.

V. ANEMIA

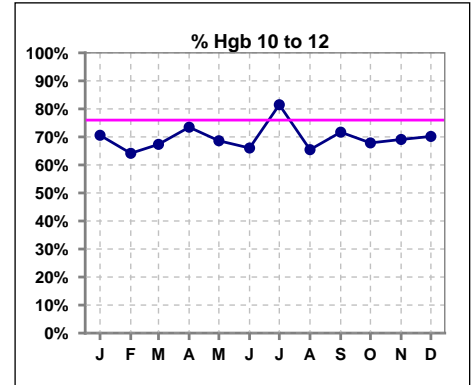
	Jan	Feb	Mar	Apr	May	Jun	Jul	Aug	Sep	Oct	Nov	Dec
# Hgb	51	53	49	49	51	53	54	55	53	56	55	57
# Hgb < 10	14	17	12	10	10	12	8	14	12	16	15	15
Pop. Mean	10.5	10.4	10.6	10.6	10.8	10.7	10.6	10.6	10.6	10.3	10.5	10.5
Std. Deviation	1.0	1.0	1.1	1.1	1.1	1.2	0.9	1.0	0.9	1.1	1.0	1.0
% Hgb < 10	27%	32%	24%	20%	20%	23%	15%	25%	23%	29%	27%	26%

Note: Excludes patients who received no ESA in month.



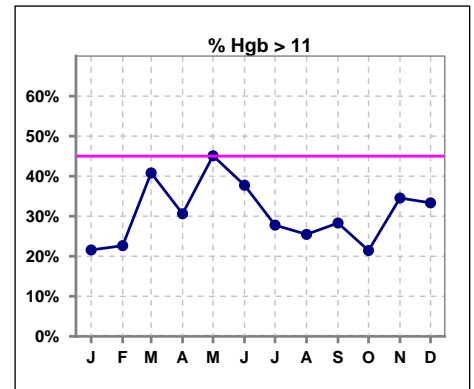
	Jan	Feb	Mar	Apr	May	Jun	Jul	Aug	Sep	Oct	Nov	Dec
# Hgb	51	53	49	49	51	53	54	55	53	56	55	57
# Hgb 10 to 12	36	34	33	36	35	35	44	36	38	38	38	40
Pop. Mean	10.5	10.4	10.6	10.6	10.8	10.7	10.6	10.6	10.6	10.3	10.5	10.5
Std. Deviation	1.0	1.0	1.1	1.1	1.1	1.2	0.9	1.0	0.9	1.1	1.0	1.0
% Hgb 10 to 12	71%	64%	67%	73%	69%	66%	81%	65%	72%	68%	69%	70%

Note: Excludes patients who received no ESA in month.



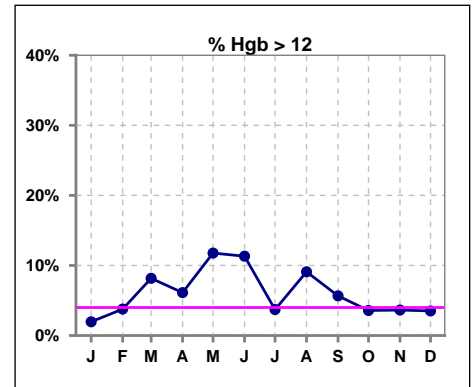
	Jan	Feb	Mar	Apr	May	Jun	Jul	Aug	Sep	Oct	Nov	Dec
# Hgb	51	53	49	49	51	53	54	55	53	56	55	57
# Hgb > 11	11	12	20	15	23	20	15	14	15	12	19	19
Pop. Mean	10.5	10.4	10.6	10.6	10.8	10.7	10.6	10.6	10.6	10.3	10.5	10.5
Std. Deviation	1.0	1.0	1.1	1.1	1.1	1.2	0.9	1.0	0.9	1.1	1.0	1.0
% Hgb > 11	22%	23%	41%	31%	45%	38%	28%	25%	28%	21%	35%	33%

Note: Excludes patients who received no ESA in month.



	Jan	Feb	Mar	Apr	May	Jun	Jul	Aug	Sep	Oct	Nov	Dec
# Hgb	51	53	49	49	51	53	54	55	53	56	55	57
# Hgb > 12	1	2	4	3	6	6	2	5	3	2	2	2
Pop. Mean	10.5	10.4	10.6	10.6	10.8	10.7	10.6	10.6	10.6	10.3	10.5	10.5
Std. Deviation	1.0	1.0	1.1	1.1	1.1	1.2	0.9	1.0	0.9	1.1	1.0	1.0
% Hgb > 12	2%	4%	8%	6%	12%	11%	4%	9%	6%	4%	4%	4%

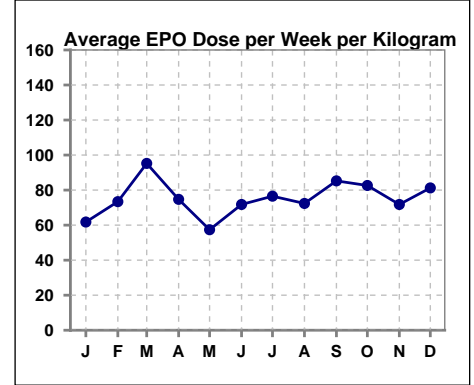
Note: Excludes patients who received no ESA in month.



V. ANEMIA - CONT.

Average EPO Dose per Week per Kilogram

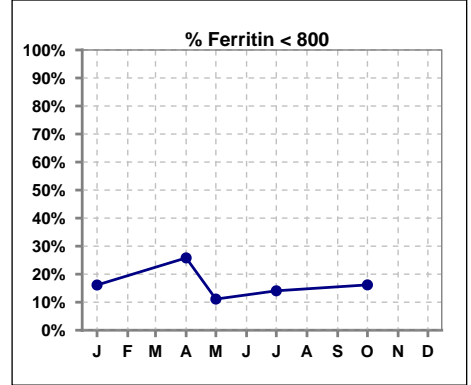
	Jan	Feb	Mar	Apr	May	Jun	Jul	Aug	Sep	Oct	Nov	Dec
# Average EPO	61.8	73.4	95.2	74.7	57.4	71.8	76.5	72.4	85.3	82.6	71.8	81.2



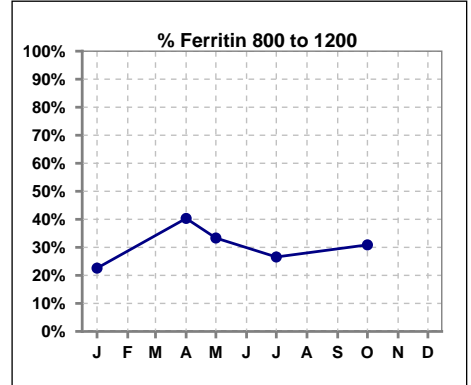
V. ANEMIA - CONT.

Iron Profile

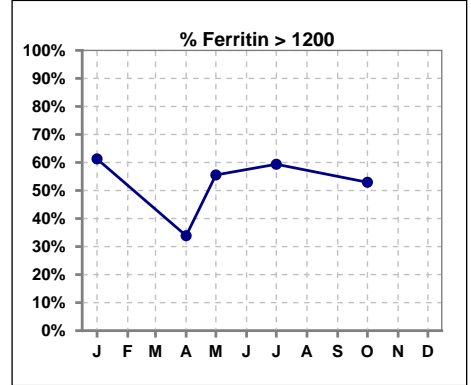
	Jan	Feb	Mar	Apr	May	Jun	Jul	Aug	Sep	Oct	Nov	Dec
# Ferritin	62			62	9		64			68		
# Ferritin < 800	10			16	1		9			11		
Pop. Mean	1282			1084	1226		1293			1191		
Std. Deviation	476			420	354		454			420		
% Ferritin < 800	16%			26%	11%		14%			16%		



	Jan	Feb	Mar	Apr	May	Jun	Jul	Aug	Sep	Oct	Nov	Dec
# Ferritin	62			62	9		64			68		
# Ferritin 800 to 1200	14			25	3		17			21		
Pop. Mean	1282			1084	1226		1293			1191		
Std. Deviation	476			420	354		454			420		
% Ferritin 800 to 1200	23%			40%	33%		27%			31%		

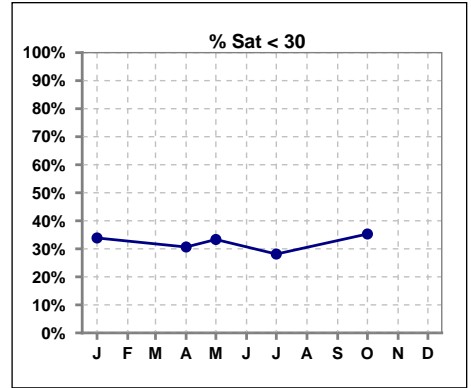


	Jan	Feb	Mar	Apr	May	Jun	Jul	Aug	Sep	Oct	Nov	Dec
# Ferritin	62			62	9		64			68		
# Ferritin > 1200	38			21	5		38			36		
Pop. Mean	1282			1084	1226		1293			1191		
Std. Deviation	476			420	354		454			420		
% Ferritin > 1200	61%			34%	56%		59%			53%		

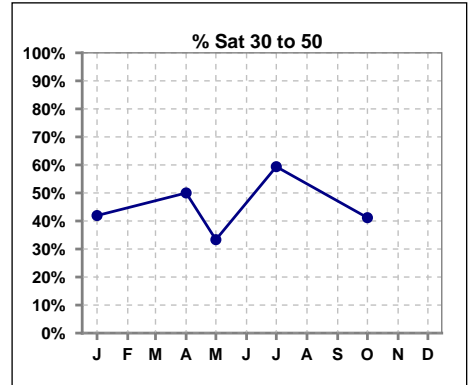


V. ANEMIA - CONT.

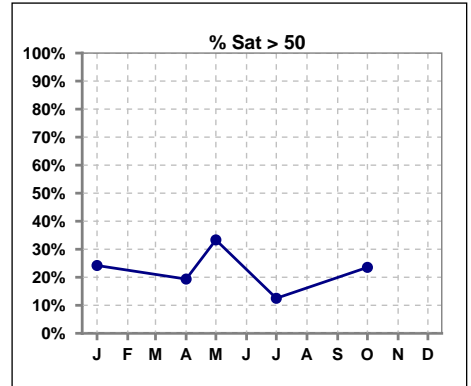
	Jan	Feb	Mar	Apr	May	Jun	Jul	Aug	Sep	Oct	Nov	Dec
# % Sat	62			62	9		64			68		
# % Sat < 30	21			19	3		18			24		
Pop. Mean	40			39	39		38			36		
Std. Deviation	19			18	19		15			18		
%% Sat < 30	34%			31%	33%		28%			35%		



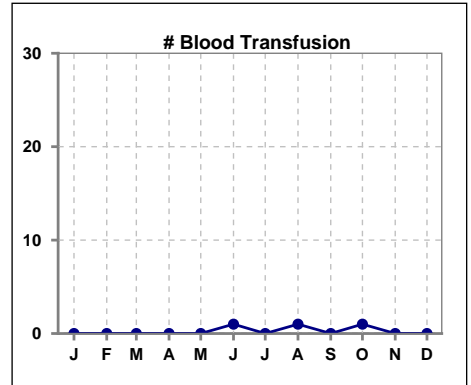
	Jan	Feb	Mar	Apr	May	Jun	Jul	Aug	Sep	Oct	Nov	Dec
# % Sat	62			62	9		64			68		
# % Sat 30 to 50	26			31	3		38			28		
Pop. Mean	40			39	39		38			36		
Std. Deviation	19			18	19		15			18		
%% Sat 30 to 50	42%			50%	33%		59%			41%		



	Jan	Feb	Mar	Apr	May	Jun	Jul	Aug	Sep	Oct	Nov	Dec
# % Sat	62			62	9		64			68		
# % Sat > 50	15			12	3		8			16		
Pop. Mean	40			39	39		38			36		
Std. Deviation	19			18	19		15			18		
%% Sat > 50	24%			19%	33%		13%			24%		



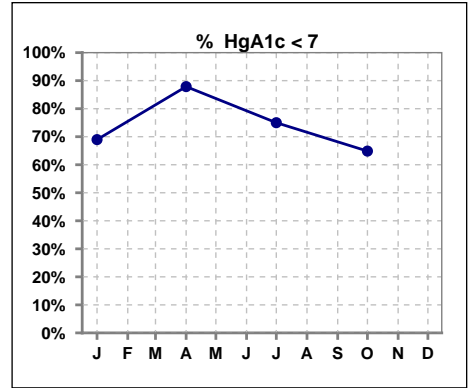
	Jan	Feb	Mar	Apr	May	Jun	Jul	Aug	Sep	Oct	Nov	Dec
# Patient	63	61	59	62	59	64	64	65	65	68	68	69
# Blood Transfusion	0	0	0	0	0	1	0	1	0	1	0	0



Methodology: a) All labs for 'Adequacy of Dialysis', 'Nutrition', 'Osteodystrophy', 'Anemia' and 'Diabetes' based on last value of month; b) BP's and #L processed are average of all values for month; c) Access data takes last access of month; d) Values for SGA and 'Infection Control' use most recent result.

VI. Diabetes

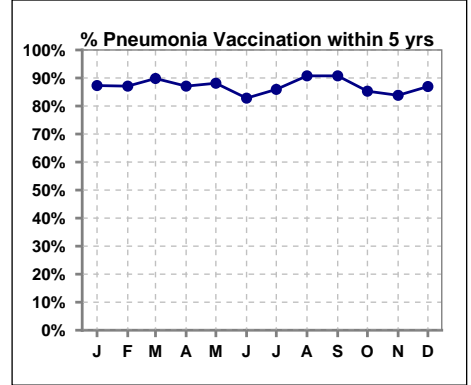
	Jan	Feb	Mar	Apr	May	Jun	Jul	Aug	Sep	Oct	Nov	Dec
# HgA1c	29			33			36			37		
# HgA1c < 7	20			29			27			24		
Pop. Mean	6.5			6.2			6.5			6.9		
Std. Deviation	1.14			0.82			1.14			1.47		
% HgA1c < 7	69%			88%			75%			65%		



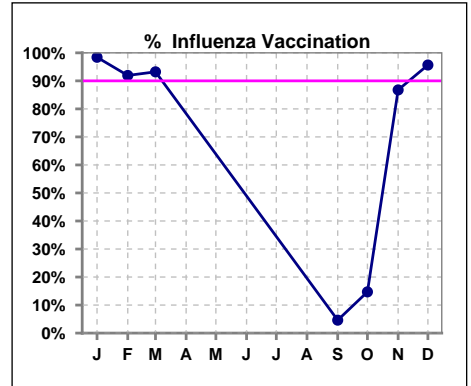
VII. Infection Control

Pneumonia vaccination within the past five years

	Jan	Feb	Mar	Apr	May	Jun	Jul	Aug	Sep	Oct	Nov	Dec
# Patient	63	62	59	62	59	64	64	65	65	68	68	69
# Pneumonia	55	54	53	54	52	53	55	59	59	58	57	60
% Pneumonia	87%	87%	90%	87%	88%	83%	86%	91%	91%	85%	84%	87%



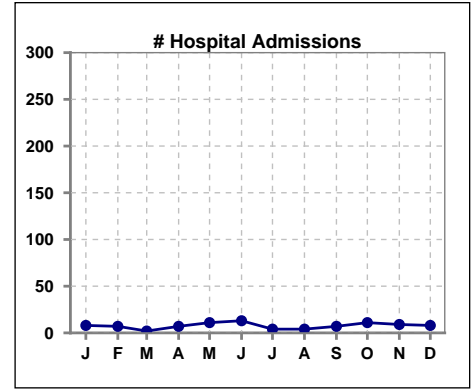
	Jan	Feb	Mar	Apr	May	Jun	Jul	Aug	Sep	Oct	Nov	Dec
# Patient	63	62	59						65	68	68	69
# Influenza	62	57	55						3	10	59	66
% Influenza	98%	92%	93%						5%	15%	87%	96%



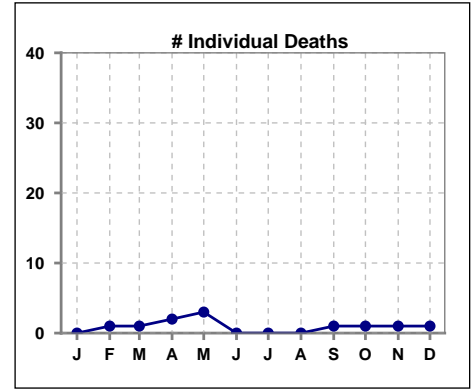
Methodology: a) All labs for 'Adequacy of Dialysis', 'Nutrition', 'Osteodystrophy', 'Anemia' and 'Diabetes' based on last value of month; b) BP's and #L processed are average of all values for month; c) Access data takes last access of month; d) Values for SGA and 'Infection Control' use most recent result.

VIII. Misc

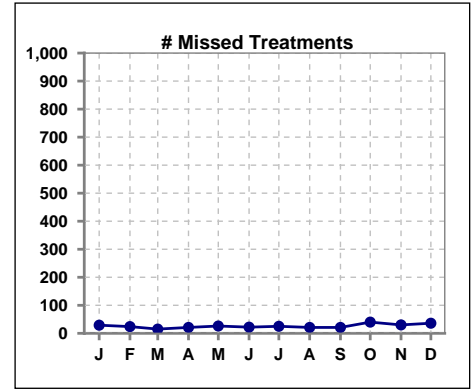
	Jan	Feb	Mar	Apr	May	Jun	Jul	Aug	Sep	Oct	Nov	Dec
# Patient	63	61	59	62	59	64	64	65	65	68	68	69
# Hospital Admissions	8	7	2	7	11	13	4	4	7	11	9	8



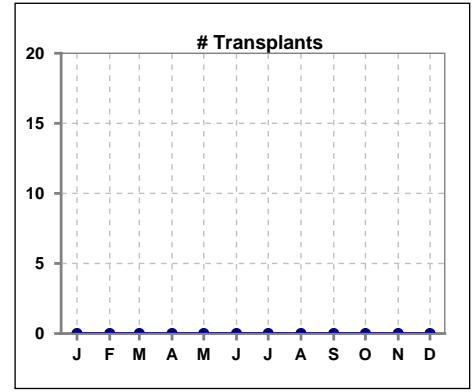
	Jan	Feb	Mar	Apr	May	Jun	Jul	Aug	Sep	Oct	Nov	Dec
# Patient	63	61	59	62	59	64	64	65	65	68	68	69
# Individual Deaths	0	1	1	2	3	0	0	0	1	1	1	1



	Jan	Feb	Mar	Apr	May	Jun	Jul	Aug	Sep	Oct	Nov	Dec
# Patient	63	61	59	62	59	64	64	65	65	68	68	69
# Missed Treatments	29	24	15	21	26	22	25	21	21	40	30	36



	Jan	Feb	Mar	Apr	May	Jun	Jul	Aug	Sep	Oct	Nov	Dec
# Patient	63	61	59	62	59	64	64	65	65	68	68	69
# Transplants	0	0	0	0	0	0	0	0	0	0	0	0



Methodology: a) All labs for 'Adequacy of Dialysis', 'Nutrition', 'Osteodystrophy', 'Anemia' and 'Diabetes' based on last value of month; b) BP's and #L processed are average of all values for month; c) Access data takes last access of month; d) Values for SGA and 'Infection Control' use most recent result.