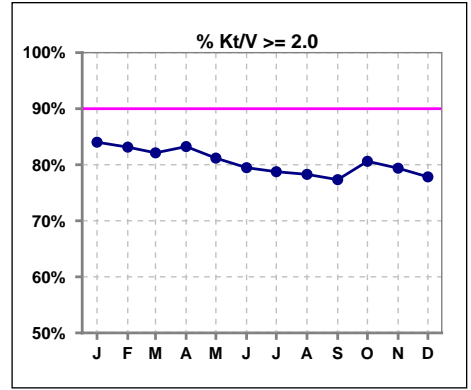
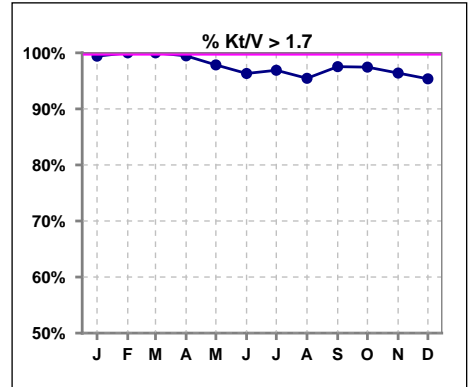


I. ADEQUACY OF DIALYSIS

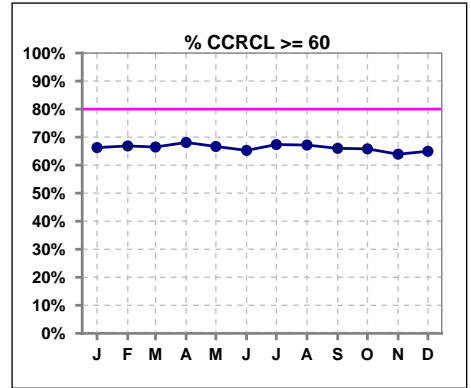
	Jan	Feb	Mar	Apr	May	Jun	Jul	Aug	Sep	Oct	Nov	Dec
# Kt/V - CA/CC PD	169	172	179	185	186	190	193	198	203	196	194	194
# Kt/V >= 2.0	142	143	147	154	151	151	152	155	157	158	154	151
Pop. Mean	2.44	2.45	2.45	2.44	2.44	2.41	2.39	2.37	2.36	2.36	2.36	2.39
Std. Deviation	0.54	0.54	0.53	0.54	0.67	0.67	0.56	0.56	0.55	0.52	0.55	0.64
% Kt/V >= 2.0	84%	83%	82%	83%	81%	79%	79%	78%	77%	81%	79%	78%



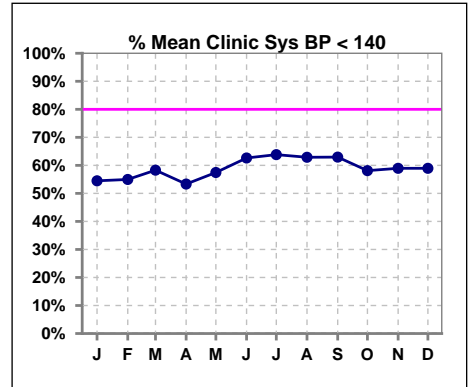
	Jan	Feb	Mar	Apr	May	Jun	Jul	Aug	Sep	Oct	Nov	Dec
# Kt/V - CA/CC PD	169	172	179	185	186	190	193	198	203	196	194	194
# Kt/V >= 1.7	168	172	179	184	182	183	187	189	198	191	187	185
Pop. Mean	2.44	2.45	2.45	2.44	2.44	2.41	2.39	2.37	2.36	2.36	2.36	2.39
Std. Deviation	0.54	0.54	0.53	0.54	0.67	0.67	0.56	0.56	0.55	0.52	0.55	0.64
% Kt/V >= 1.7	99%	100%	100%	99%	98%	96%	97%	95%	98%	97%	96%	95%



	Jan	Feb	Mar	Apr	May	Jun	Jul	Aug	Sep	Oct	Nov	Dec
# CRCL CA/CC PD	169	172	179	185	186	190	193	198	203	196	194	194
# CCRCL >= 60	112	115	119	126	124	124	130	133	134	129	124	126
Pop. Mean	83.28	83.28	83.29	83.42	84.96	83.25	83.24	81.96	81.50	84.43	83.15	85.28
Std. Deviation	38.96	39.00	37.52	37.12	46.08	44.99	40.18	38.48	38.35	54.23	54.43	55.54
% CCRCL >= 60	66%	67%	66%	68%	67%	65%	67%	67%	66%	66%	64%	65%



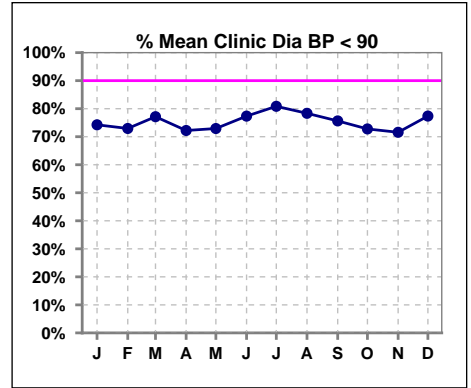
	Jan	Feb	Mar	Apr	May	Jun	Jul	Aug	Sep	Oct	Nov	Dec
# Mean Clinic Sys BP	167	171	175	180	181	182	188	194	197	191	190	190
# Sys BP < 140	91	94	102	96	104	114	120	122	124	111	112	112
Pop. Mean	138	138	138	137	136	133	132	134	133	137	137	135
Std. Deviation	27.1	26.1	25.4	25.4	24.2	25.2	24.3	24.8	24.9	26.8	25.7	23.4
% Sys BP <140	54%	55%	58%	53%	57%	63%	64%	63%	63%	58%	59%	59%



Methodology: a) Kt/V, CRCL and nPNa values are 4 month rolling mean of last value for each month, all other report lab results are based on last value of month; b) BP's are average of all values for month.

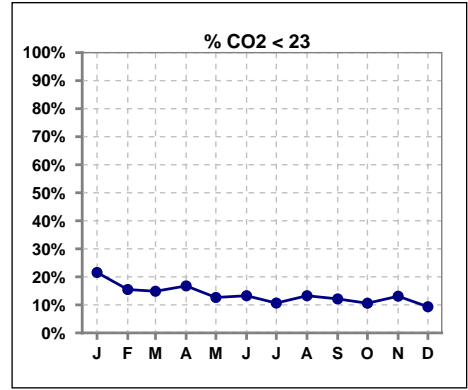
I. ADEQUACY OF DIALYSIS - CONT.

	Jan	Feb	Mar	Apr	May	Jun	Jul	Aug	Sep	Oct	Nov	Dec
# Mean Clinic Dia BP	167	170	175	180	181	181	188	194	197	191	190	190
# Dia BP < 90	124	124	135	130	132	140	152	152	149	139	136	147
Pop. Mean	80	79	80	80	80	78	78	78	79	81	83	80
Std. Deviation	14.9	15.5	14.8	14.6	14.8	15.5	13.8	14.7	15.2	14.9	37.8	13.7
% Dia BP < 90	74%	73%	77%	72%	73%	77%	81%	78%	76%	73%	72%	77%

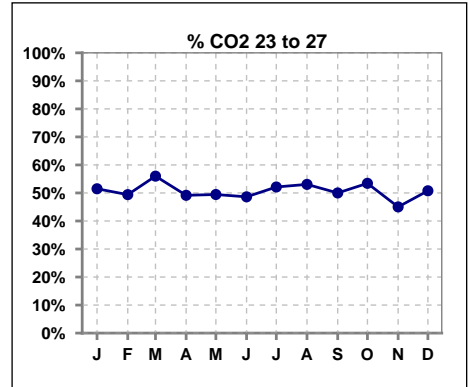


I. ADEQUACY OF DIALYSIS - CONT.

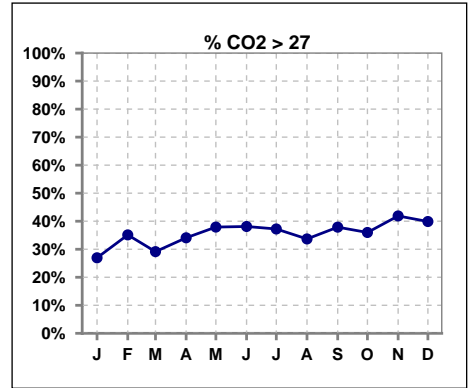
	Jan	Feb	Mar	Apr	May	Jun	Jul	Aug	Sep	Oct	Nov	Dec
# CO2	167	168	175	179	182	181	188	196	198	189	191	193
# CO2 < 23	36	26	26	30	23	24	20	26	24	20	25	18
Pop. Mean	25	26	26	26	26	26	26	26	26	26	27	27
Std. Deviation	3.34	3.30	2.98	3.06	3.32	3.22	2.95	3.02	3.01	2.96	3.16	3.03
% CO2 < 23	22%	15%	15%	17%	13%	13%	11%	13%	12%	11%	13%	9%



	Jan	Feb	Mar	Apr	May	Jun	Jul	Aug	Sep	Oct	Nov	Dec
# CO2	167	168	175	179	182	181	188	196	198	189	191	193
# CO2 23 to 27	86	83	98	88	90	88	98	104	99	101	86	98
Pop. Mean	25	26	26	26	26	26	26	26	26	26	27	27
Std. Deviation	3.34	3.30	2.98	3.06	3.32	3.22	2.95	3.02	3.01	2.96	3.16	3.03
% CO2 23 to 27	51%	49%	56%	49%	49%	49%	52%	53%	50%	53%	45%	51%



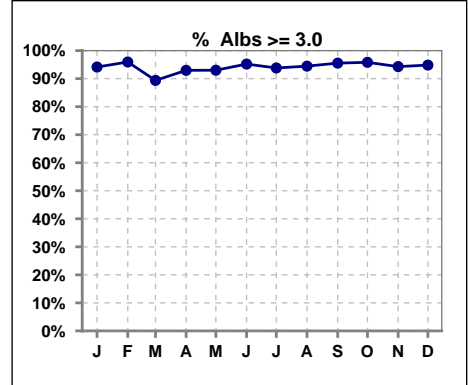
	Jan	Feb	Mar	Apr	May	Jun	Jul	Aug	Sep	Oct	Nov	Dec
# CO2	167	168	175	179	182	181	188	196	198	189	191	193
# CO2 > 27	45	59	51	61	69	69	70	66	75	68	80	77
Pop. Mean	25	26	26	26	26	26	26	26	26	26	27	27
Std. Deviation	3.34	3.30	2.98	3.06	3.32	3.22	2.95	3.02	3.01	2.96	3.16	3.03
% CO2 > 27	27%	35%	29%	34%	38%	38%	37%	34%	38%	36%	42%	40%



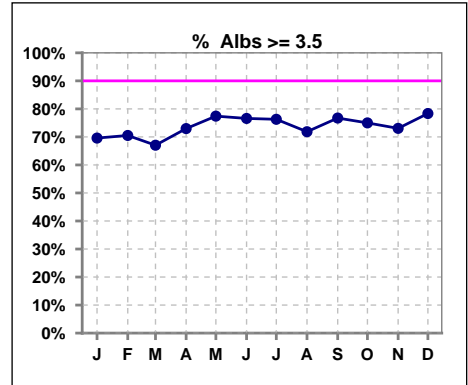
*Albumin values use BCG method - as of July 2001

II. NUTRITION

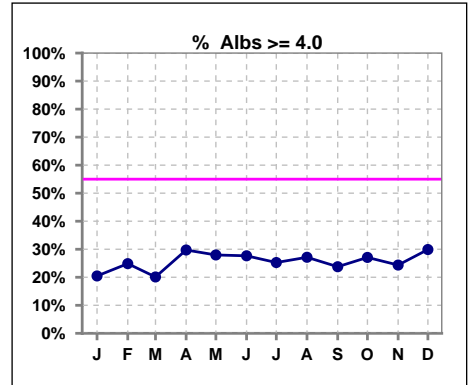
	Jan	Feb	Mar	Apr	May	Jun	Jul	Aug	Sep	Oct	Nov	Dec
# Albumin	171	173	179	185	186	188	194	199	202	192	193	194
# Albumin >= 3.0	161	166	160	172	173	179	182	188	193	184	182	184
Pop. Mean	3.7	3.7	3.6	3.7	3.7	3.7	3.7	3.7	3.7	3.7	3.7	3.7
Std. Deviation	0.42	0.46	0.49	0.48	0.45	0.47	0.43	0.43	0.41	0.44	0.42	0.43
% Alb >= 3.0	94%	96%	89%	93%	93%	95%	94%	94%	96%	96%	94%	95%



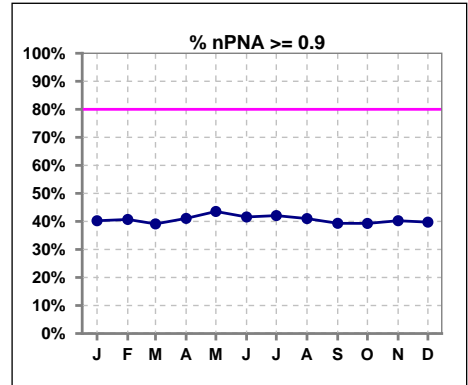
	Jan	Feb	Mar	Apr	May	Jun	Jul	Aug	Sep	Oct	Nov	Dec
# Albumin	171	173	179	185	186	188	194	199	202	192	193	194
# Albumin >= 3.5	119	122	120	135	144	144	148	143	155	144	141	152
Pop. Mean	3.7	3.7	3.6	3.7	3.7	3.7	3.7	3.7	3.7	3.7	3.7	3.7
Std. Deviation	0.42	0.46	0.49	0.48	0.45	0.47	0.43	0.43	0.41	0.44	0.42	0.43
% Alb >= 3.5	70%	71%	67%	73%	77%	77%	76%	72%	77%	75%	73%	78%



	Jan	Feb	Mar	Apr	May	Jun	Jul	Aug	Sep	Oct	Nov	Dec
# Albumin	171	173	179	185	186	188	194	199	202	192	193	194
# Albumin >= 4.0	35	43	36	55	52	52	49	54	48	52	47	58
Pop. Mean	3.7	3.7	3.6	3.7	3.7	3.7	3.7	3.7	3.7	3.7	3.7	3.7
Std. Deviation	0.42	0.46	0.49	0.48	0.45	0.47	0.43	0.43	0.41	0.44	0.42	0.43
% Alb >= 4.0	20%	25%	20%	30%	28%	28%	25%	27%	24%	27%	24%	30%



	Jan	Feb	Mar	Apr	May	Jun	Jul	Aug	Sep	Oct	Nov	Dec
# nPNA	169	172	179	185	186	190	183	178	178	168	164	156
# nPNA >= 0.9	68	70	70	76	81	79	77	73	70	66	66	62
Pop. Mean	0.9	0.9	0.9	0.9	0.9	0.9	0.9	0.9	0.9	0.9	0.9	0.9
Std. Deviation	0.26	0.26	0.27	0.27	0.27	0.27	0.27	0.27	0.28	0.29	0.28	0.28
% nPNA >= 0.9	40%	41%	39%	41%	44%	42%	42%	41%	39%	39%	40%	40%

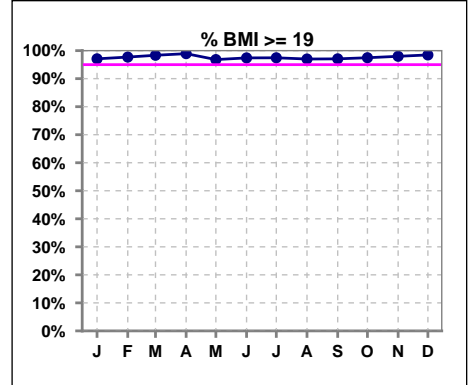


Methodology: a) KtV, CRCL and nPNa values are 4 month rolling mean of last value for each month, all other report lab results are based on last value of month; b) BP's are average of all values for month.

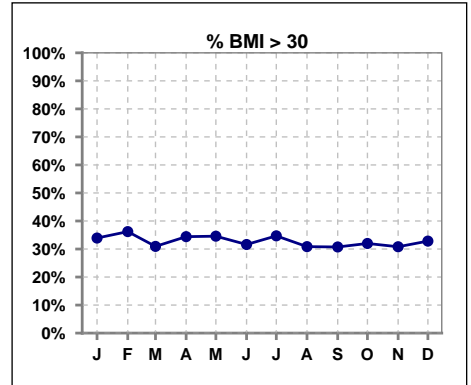
*Albumin values use BCG method - as of July 2001

II. NUTRITION - CONT.

	Jan	Feb	Mar	Apr	May	Jun	Jul	Aug	Sep	Oct	Nov	Dec
# BMI	171	174	181	186	188	193	196	201	205	197	198	195
# BMI >= 19	166	170	178	184	182	188	191	195	199	192	194	192
Pop. Mean	30	28	28	28	40	29	28	28	28	28	28	28
Std. Deviation	18.5	5.9	5.6	5.6	164.2	16.5	5.6	5.7	5.5	5.5	5.9	6.5
% BMI >= 19	97%	98%	98%	99%	97%	97%	97%	97%	97%	97%	98%	98%



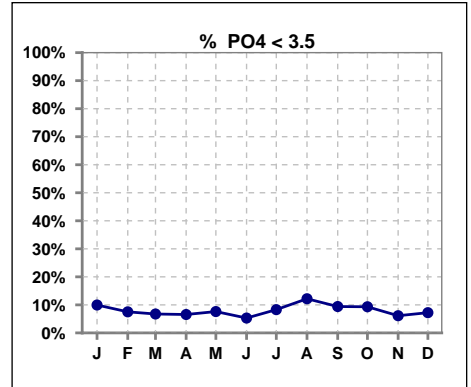
	Jan	Feb	Mar	Apr	May	Jun	Jul	Aug	Sep	Oct	Nov	Dec
# BMI	171	174	181	186	188	193	196	201	205	197	198	195
# BMI > 30	58	63	56	64	65	61	68	62	63	63	61	64
Pop. Mean	30	28	28	28	40	29	28	28	28	28	28	28
Std. Deviation	18.5	5.9	5.6	5.6	164.2	16.5	5.6	5.7	5.5	5.5	5.9	6.5
% BMI > 30	34%	36%	31%	34%	35%	32%	35%	31%	31%	32%	31%	33%



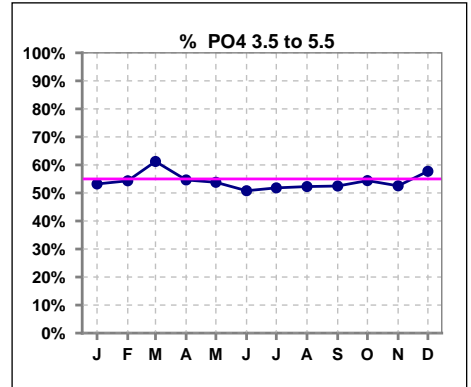
Lab methodology for PTH changed January 2012

III. OSTEODYSTROPHY

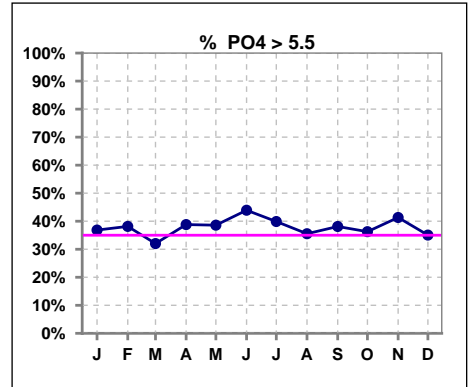
	Jan	Feb	Mar	Apr	May	Jun	Jul	Aug	Sep	Oct	Nov	Dec
# PO4	171	173	178	183	184	189	193	197	202	193	196	194
# PO4 < 3.5	17	13	12	12	14	10	16	24	19	18	12	14
Pop. Mean	5.2	5.3	5.2	5.3	5.4	5.5	5.4	5.3	5.2	5.3	5.4	5.2
Std. Deviation	1.53	1.47	1.45	1.36	1.61	1.62	1.48	1.62	1.57	1.53	1.40	1.28
% PO4 < 3.5	10%	8%	7%	7%	8%	5%	8%	12%	9%	9%	6%	7%



	Jan	Feb	Mar	Apr	May	Jun	Jul	Aug	Sep	Oct	Nov	Dec
# PO4	171	173	178	183	184	189	193	197	202	193	196	194
# PO4 3.5 to 5.5	91	94	109	100	99	96	100	103	106	105	103	112
Pop. Mean	5.2	5.3	5.2	5.3	5.4	5.5	5.4	5.3	5.2	5.3	5.4	5.2
Std. Deviation	1.53	1.47	1.45	1.36	1.61	1.62	1.48	1.62	1.57	1.53	1.40	1.28
% PO4 3.5 to 5.5	53%	54%	61%	55%	54%	51%	52%	52%	52%	54%	53%	58%



	Jan	Feb	Mar	Apr	May	Jun	Jul	Aug	Sep	Oct	Nov	Dec
# PO4	171	173	178	183	184	189	193	197	202	193	196	194
# PO4 > 5.5	63	66	57	71	71	83	77	70	77	70	81	68
Pop. Mean	5.2	5.3	5.2	5.3	5.4	5.5	5.4	5.3	5.2	5.3	5.4	5.2
Std. Deviation	1.53	1.47	1.45	1.36	1.61	1.62	1.48	1.62	1.57	1.53	1.40	1.28
% PO4 > 5.5	37%	38%	32%	39%	39%	44%	40%	36%	38%	36%	41%	35%

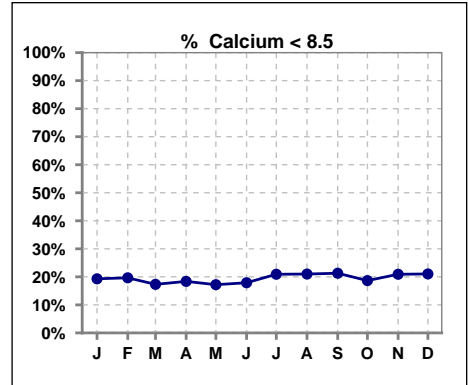


Methodology: a) Kt/V, CRCL and nPNa values are 4 month rolling mean of last value for each month, all other report lab results are based on last value of month; b) BP's are average of all values for month.

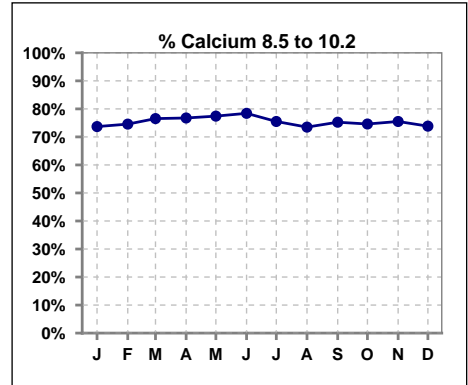
Lab methodology for PTH changed January 2012

III. OSTEODYSTROPHY - CONT.

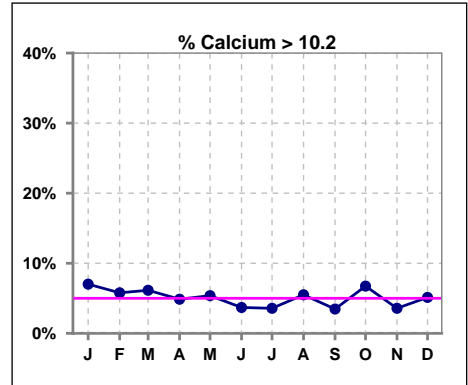
	Jan	Feb	Mar	Apr	May	Jun	Jul	Aug	Sep	Oct	Nov	Dec
# Calcium	171	173	179	185	186	190	196	200	202	193	196	195
# Calcium < 8.5	33	34	31	34	32	34	41	42	43	36	41	41
Pop. Mean	9.1	9.0	9.0	9.0	9.1	9.0	9.0	9.0	8.9	9.1	9.0	9.0
Std. Deviation	0.76	0.78	0.72	0.73	0.78	0.74	0.75	0.74	0.73	0.77	0.73	0.73
% Calcium < 8.5	19%	20%	17%	18%	17%	18%	21%	21%	21%	19%	21%	21%



	Jan	Feb	Mar	Apr	May	Jun	Jul	Aug	Sep	Oct	Nov	Dec
# Calcium	171	173	179	185	186	190	196	200	202	193	196	195
# Calcium 8.5 to 10.2	126	129	137	142	144	149	148	147	152	144	148	144
Pop. Mean	9.1	9.0	9.0	9.0	9.1	9.0	9.0	9.0	8.9	9.1	9.0	9.0
Std. Deviation	0.76	0.78	0.72	0.73	0.78	0.74	0.75	0.74	0.73	0.77	0.73	0.73
% Calcium 8.5 to 10.2	74%	75%	77%	77%	77%	78%	76%	74%	75%	75%	76%	74%



	Jan	Feb	Mar	Apr	May	Jun	Jul	Aug	Sep	Oct	Nov	Dec
# Calcium	171	173	179	185	186	190	196	200	202	193	196	195
# Calcium > 10.2	12	10	11	9	10	7	7	11	7	13	7	10
Pop. Mean	9.1	9.0	9.0	9.0	9.1	9.0	9.0	9.0	8.9	9.1	9.0	9.0
Std. Deviation	0.76	0.78	0.72	0.73	0.78	0.74	0.75	0.74	0.73	0.77	0.73	0.73
% Calcium > 10.2	7%	6%	6%	5%	5%	4%	4%	6%	3%	7%	4%	5%

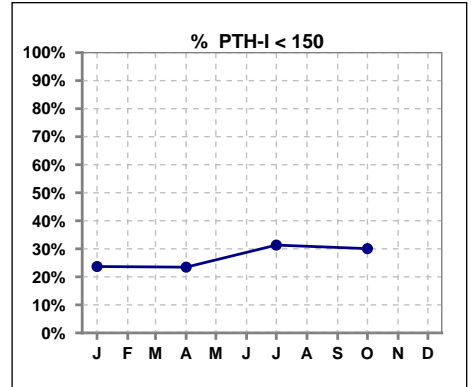


Methodology: a) Kt/V, CRCL and nPNa values are 4 month rolling mean of last value for each month, all other report lab results are based on last value of month; b) BP's are average of all values for month.

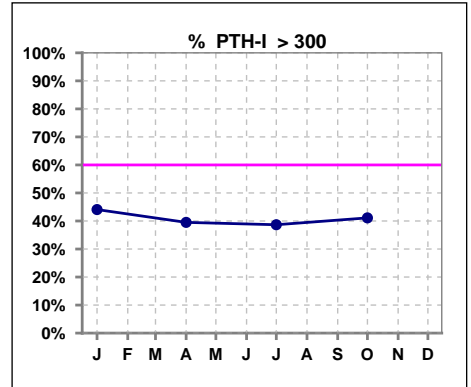
Lab methodology for PTH changed January 2012

III. OSTEODYSTROPHY - CONT.

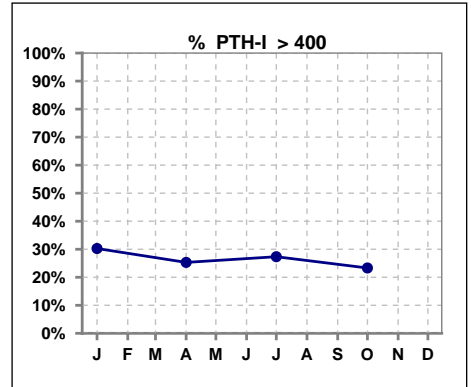
	Jan	Feb	Mar	Apr	May	Jun	Jul	Aug	Sep	Oct	Nov	Dec
# PTH-I	152			162			150			163		
# PTH-I < 150	36			38			47			49		
Pop. Mean	364			332			334			296		
Std. Deviation	347			315			316			246		
% PTH-I < 150	24%			23%			31%			30%		



	Jan	Feb	Mar	Apr	May	Jun	Jul	Aug	Sep	Oct	Nov	Dec
# PTH-I	152			162			150			163		
# PTH-I > 300	67			64			58			67		
Pop. Mean	364			332			334			296		
Std. Deviation	347			315			316			246		
% PTH-I > 300	44%			40%			39%			41%		

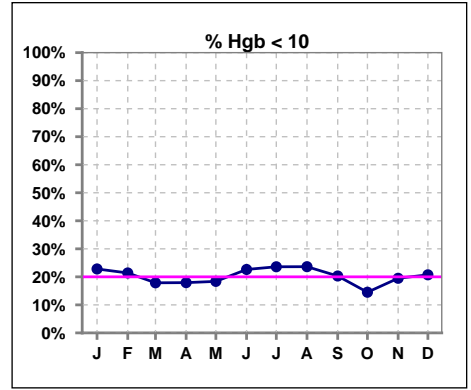


	Jan	Feb	Mar	Apr	May	Jun	Jul	Aug	Sep	Oct	Nov	Dec
# PTH-I	152			162			150			163		
# PTH-I > 400	46			41			41			38		
Pop. Mean	364			332			334			296		
Std. Deviation	347			315			316			246		
% PTH-I > 400	30%			25%			27%			23%		

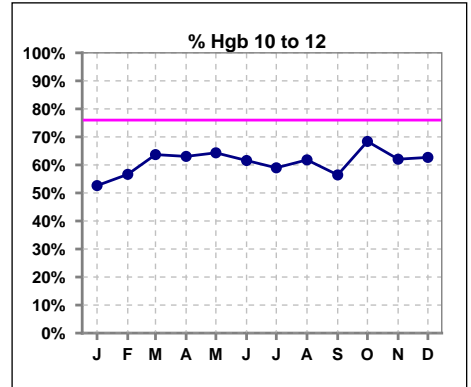


IV. ANEMIA

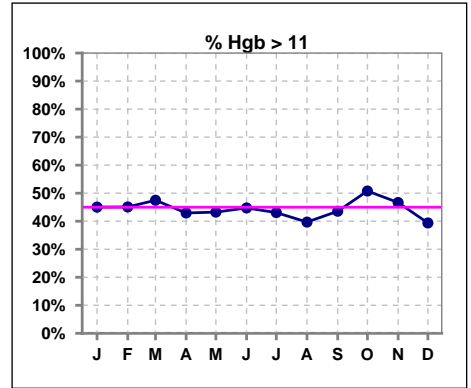
	Jan	Feb	Mar	Apr	May	Jun	Jul	Aug	Sep	Oct	Nov	Dec
# Hgb	171	173	179	184	185	190	195	199	202	193	195	193
# Hgb < 10	39	37	32	33	34	43	46	47	41	28	38	40
Pop. Mean	11.0	11.0	11.0	11.0	10.9	10.9	10.9	10.8	11.0	11.1	11.0	10.9
Std. Deviation	1.7	1.6	1.5	1.5	1.4	1.5	1.5	1.5	1.5	1.5	1.6	1.6
% Hgb < 10	23%	21%	18%	18%	18%	23%	24%	24%	20%	15%	19%	21%



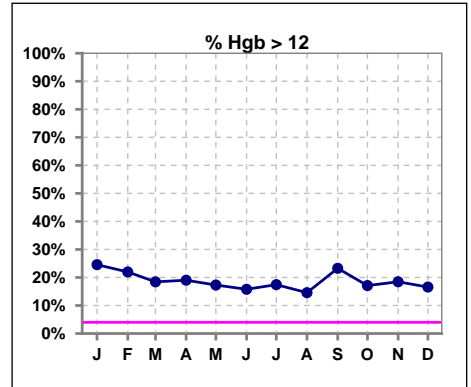
	Jan	Feb	Mar	Apr	May	Jun	Jul	Aug	Sep	Oct	Nov	Dec
# Hgb	171	173	179	184	185	190	195	199	202	193	195	193
# Hgb 10 to 12	90	98	114	116	119	117	115	123	114	132	121	121
Pop. Mean	11.0	11.0	11.0	11.0	10.9	10.9	10.9	10.8	11.0	11.1	11.0	10.9
Std. Deviation	1.7	1.6	1.5	1.5	1.4	1.5	1.5	1.5	1.5	1.5	1.6	1.6
% Hgb 10 to 12	53%	57%	64%	63%	64%	62%	59%	62%	56%	68%	62%	63%



	Jan	Feb	Mar	Apr	May	Jun	Jul	Aug	Sep	Oct	Nov	Dec
# Hgb	171	173	179	184	185	190	195	199	202	193	195	193
# Hgb > 11	77	78	85	79	80	85	84	79	88	98	91	76
Pop. Mean	11.0	11.0	11.0	11.0	10.9	10.9	10.9	10.8	11.0	11.1	11.0	10.9
Std. Deviation	1.7	1.6	1.5	1.5	1.4	1.5	1.5	1.5	1.5	1.5	1.6	1.6
% Hgb > 11	45%	45%	47%	43%	43%	45%	43%	40%	44%	51%	47%	39%



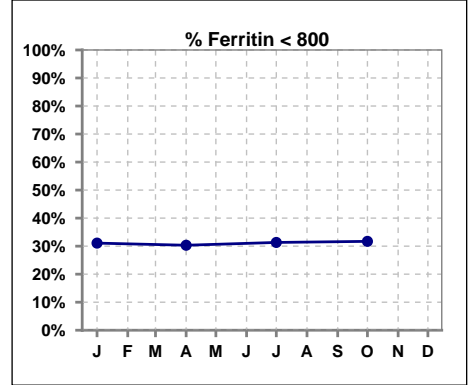
	Jan	Feb	Mar	Apr	May	Jun	Jul	Aug	Sep	Oct	Nov	Dec
# Hgb	171	173	179	184	185	190	195	199	202	193	195	193
# Hgb > 12	42	38	33	35	32	30	34	29	47	33	36	32
Pop. Mean	11.0	11.0	11.0	11.0	10.9	10.9	10.9	10.8	11.0	11.1	11.0	10.9
Std. Deviation	1.7	1.6	1.5	1.5	1.4	1.5	1.5	1.5	1.5	1.5	1.6	1.6
% Hgb > 12	25%	22%	18%	19%	17%	16%	17%	15%	23%	17%	18%	17%



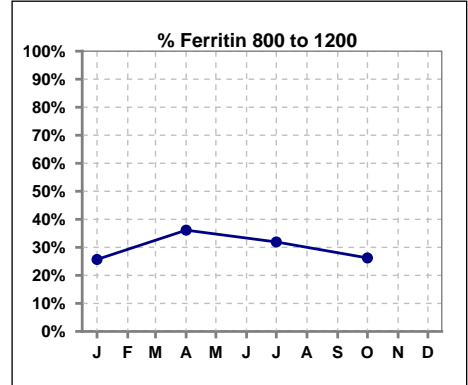
IV. ANEMIA - CONT.

Iron Profile

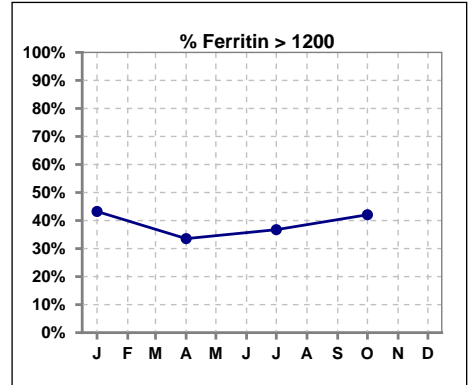
	Jan	Feb	Mar	Apr	May	Jun	Jul	Aug	Sep	Oct	Nov	Dec
# Ferritin	148			155			166			164		
# Ferritin < 800	46			47			52			52		
Pop. Mean	1119			1083			1073			1100		
Std. Deviation	567			714			586			574		
% Ferritin < 800	31%			30%			31%			32%		



	Jan	Feb	Mar	Apr	May	Jun	Jul	Aug	Sep	Oct	Nov	Dec
# Ferritin	148			155			166			164		
# Ferritin 800 to 1200	38			56			53			43		
Pop. Mean	1119			1083			1073			1100		
Std. Deviation	567			714			586			574		
% Ferritin 800 to 1200	26%			36%			32%			26%		

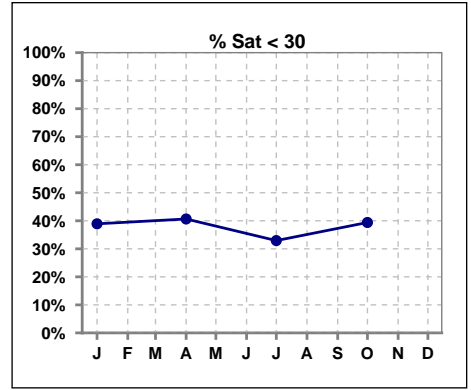


	Jan	Feb	Mar	Apr	May	Jun	Jul	Aug	Sep	Oct	Nov	Dec
# Ferritin	148			155			166			164		
# Ferritin > 1200	64			52			61			69		
Pop. Mean	1119			1083			1073			1100		
Std. Deviation	567			714			586			574		
% Ferritin > 1200	43%			34%			37%			42%		

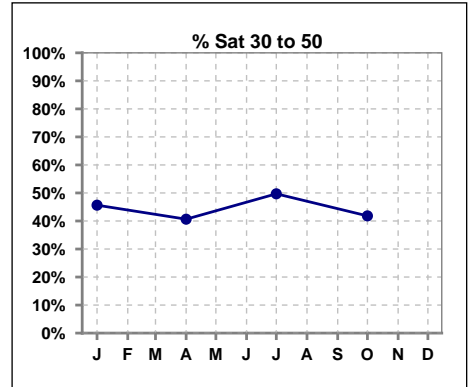


IV. ANEMIA - CONT.

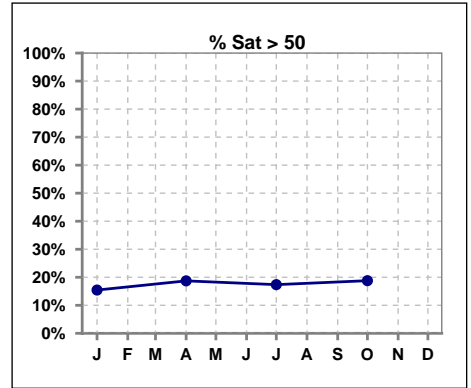
	Jan	Feb	Mar	Apr	May	Jun	Jul	Aug	Sep	Oct	Nov	Dec
# % Sat	149			155			167			165		
# % Sat < 30	58			63			55			65		
Pop. Mean	36			37			39			37		
Std. Deviation	15			17			18			17		
% % Sat < 30	39%			41%			33%			39%		



	Jan	Feb	Mar	Apr	May	Jun	Jul	Aug	Sep	Oct	Nov	Dec
# % Sat	149			155			167			165		
# % Sat 30 to 50	68			63			83			69		
Pop. Mean	36			37			39			37		
Std. Deviation	15			17			18			17		
% Sat% 30 to 50	46%			41%			50%			42%		

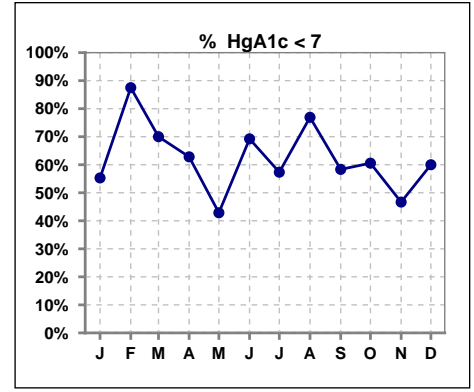


	Jan	Feb	Mar	Apr	May	Jun	Jul	Aug	Sep	Oct	Nov	Dec
# % Sat	149			155			167			165		
# % Sat > 50	23			29			29			31		
Pop. Mean	36			37			39			37		
Std. Deviation	15			17			18			17		
% Sat% > 50	15%			19%			17%			19%		



V. Diabetes

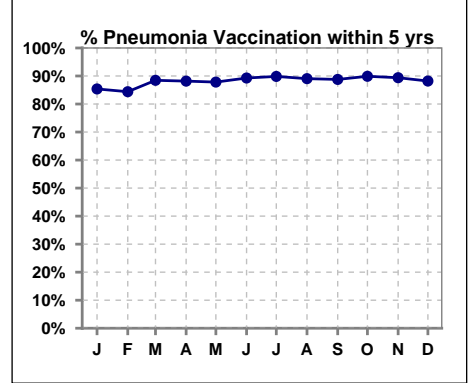
	Jan	Feb	Mar	Apr	May	Jun	Jul	Aug	Sep	Oct	Nov	Dec
# HgA1c	85	8	10	78	7	13	75	13	12	71	15	15
# HgA1c < 7	47	7	7	49	3	9	43	10	7	43	7	9
Pop. Mean	6.9	6.1	6.9	6.8	7.6	6.5	6.9	6.6	7.0	7.0	7.1	7.1
Std. Deviation	1.17	0.54	1.54	1.33	1.64	1.29	1.18	1.50	1.55	1.32	1.34	1.18
% HgA1c < 7	55%	88%	70%	63%	43%	69%	57%	77%	58%	61%	47%	60%



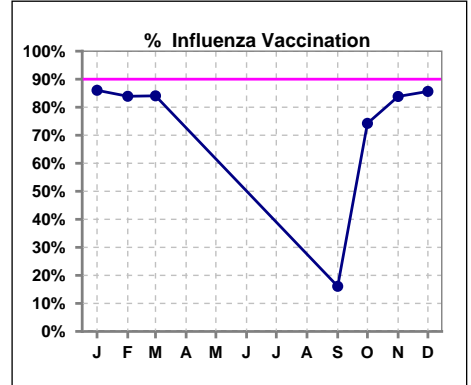
VI. Infection Control

Pneumonia vaccination within the past five years

	Jan	Feb	Mar	Apr	May	Jun	Jul	Aug	Sep	Oct	Nov	Dec
# Patient	171	173	182	186	189	196	197	201	205	198	198	195
# Pneumonia	146	146	161	164	166	175	177	179	182	178	177	172
% Pneumonia	85%	84%	88%	88%	88%	89%	90%	89%	89%	90%	89%	88%



	Jan	Feb	Mar	Apr	May	Jun	Jul	Aug	Sep	Oct	Nov	Dec
# Patient	172	174	182						205	198	198	195
# Influenza	148	146	153						33	147	166	167
% Influenza	86%	84%	84%						16%	74%	84%	86%



Exit Site Infection Rate

	Jan	Feb	Mar	Apr	May	Jun	Jul	Aug	Sep	Oct	Nov	Dec
Current Month	58.01	79.04	91.01	91.01	190.93	62.60	199.38	0	200.62	201.48	196.06	210.85
Rolling Year-to-date	0.14	0.14	0.14	0.14	0.13	0.15	0.14	0.12	0.11	0.11	0.10	0.11

Peritonitis Infection Rate

	Jan	Feb	Mar	Apr	May	Jun	Jul	Aug	Sep	Oct	Nov	Dec
Current Month	43.51	39.52	20.22	30.34	23.87	20.87	24.92	33.73	25.08	33.58	39.21	35.14
Rolling Year-to-date	0.31	0.31	0.39	0.39	0.41	0.41	0.43	0.42	0.44	0.45	0.42	0.44

Methodology: a) Kt/V, CRCL and nPNa values are 4 month rolling mean of last value for each month, all other report lab results are based on last value of month; b) BP's are average of all values for month.