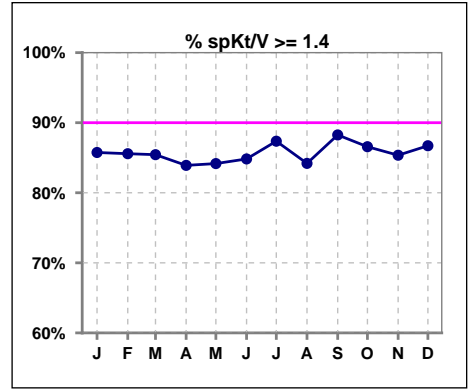
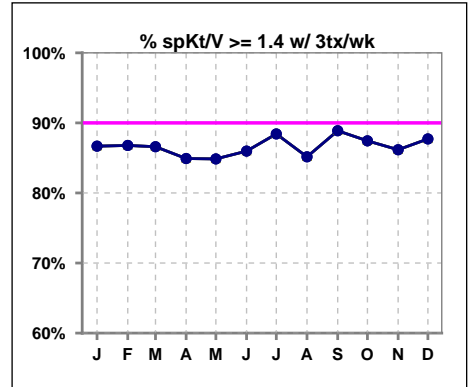


**I. ADEQUACY OF DIALYSIS**

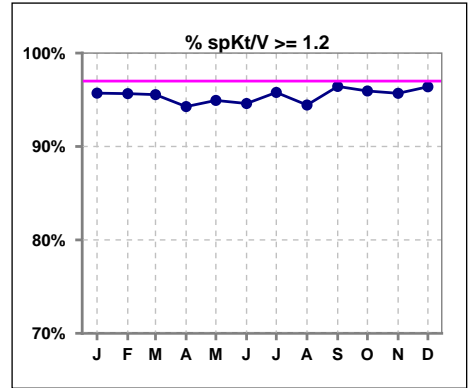
	Jan	Feb	Mar	Apr	May	Jun	Jul	Aug	Sep	Oct	Nov	Dec
# spKt/V	1235	1220	1236	1274	1263	1259	1258	1259	1260	1281	1277	1302
# spKt/V >= 1.4	1059	1044	1056	1069	1063	1068	1099	1060	1112	1109	1090	1129
Pop. Mean	1.67	1.68	1.67	1.66	1.66	1.67	1.68	1.67	1.70	1.68	1.68	1.69
Std. Deviation	0.30	0.31	0.30	0.32	0.35	0.33	0.30	0.33	0.32	0.33	0.31	0.32
% spKt/V >= 1.4	86%	86%	85%	84%	84%	85%	87%	84%	88%	87%	85%	87%



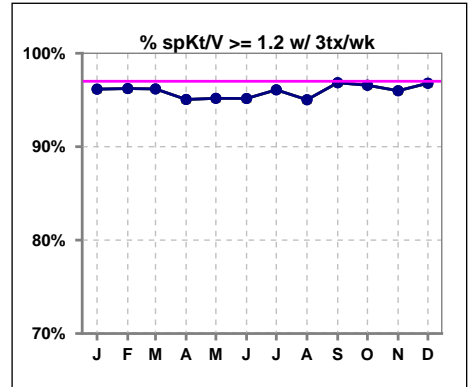
	Jan	Feb	Mar	Apr	May	Jun	Jul	Aug	Sep	Oct	Nov	Dec
# spKt/V w/ 3tx/wk	1171	1165	1179	1213	1202	1198	1201	1206	1205	1226	1222	1245
# spKt/V >= 1.4 w/3tx/wk	1015	1011	1021	1030	1020	1030	1062	1027	1071	1072	1053	1092
Pop. Mean	1.68	1.69	1.68	1.66	1.67	1.68	1.68	1.68	1.71	1.69	1.68	1.70
Std. Deviation	0.30	0.30	0.30	0.31	0.34	0.33	0.30	0.32	0.31	0.32	0.31	0.32
% >= 1.4 w/3tx/wk	87%	87%	87%	85%	85%	86%	88%	85%	89%	87%	86%	88%



	Jan	Feb	Mar	Apr	May	Jun	Jul	Aug	Sep	Oct	Nov	Dec
# spKt/V	1235	1220	1236	1274	1263	1259	1258	1259	1260	1281	1277	1302
# spKt/V >= 1.2	1182	1167	1181	1201	1199	1191	1205	1189	1215	1229	1222	1255
Pop. Mean	1.67	1.68	1.67	1.66	1.66	1.67	1.68	1.67	1.70	1.68	1.68	1.69
Std. Deviation	0.30	0.31	0.30	0.32	0.35	0.33	0.30	0.33	0.32	0.33	0.31	0.32
% spKt/V >= 1.2	96%	96%	96%	94%	95%	95%	96%	94%	96%	96%	96%	96%



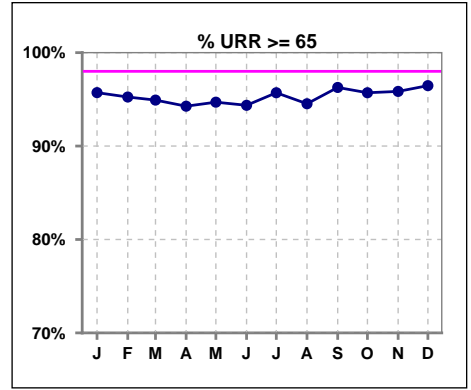
	Jan	Feb	Mar	Apr	May	Jun	Jul	Aug	Sep	Oct	Nov	Dec
# spKt/V w/ 3tx/wk	1171	1165	1179	1213	1202	1198	1201	1206	1205	1226	1222	1245
# spKt/V >= 1.2 w/3tx/wk	1126	1121	1134	1153	1144	1140	1154	1146	1167	1184	1173	1205
Pop. Mean	1.68	1.69	1.68	1.66	1.67	1.68	1.68	1.68	1.71	1.69	1.68	1.70
Std. Deviation	0.30	0.30	0.30	0.31	0.34	0.33	0.30	0.32	0.31	0.32	0.31	0.32
% >= 1.2 w/3tx/wk	96%	96%	96%	95%	95%	95%	96%	95%	97%	97%	96%	97%



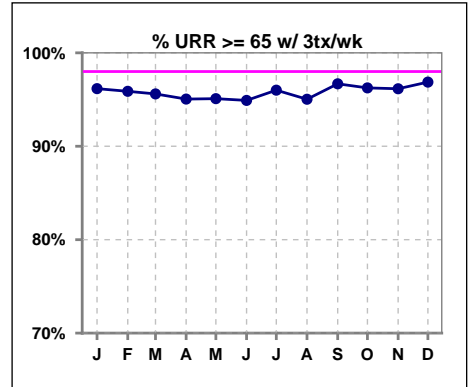
Methodology: a) All labs for 'Adequacy of Dialysis', 'Nutrition', 'Osteodystrophy', 'Anemia' and 'Diabetes' based on last value of month; b) BP's and #L processed are average of all values for month; c) Access data takes last access of month; d) Values for SGA and 'Infection Control' use most recent result.

**I. ADEQUACY OF DIALYSIS - CONT.**

	Jan	Feb	Mar	Apr	May	Jun	Jul	Aug	Sep	Oct	Nov	Dec
# URR	1238	1221	1240	1273	1264	1259	1258	1261	1261	1281	1277	1302
# URR >= 65	1185	1163	1177	1200	1197	1188	1204	1192	1214	1226	1224	1256
Pop. Mean	76	76	76	75	76	76	76	76	76	76	76	76
Std. Deviation	6.28	6.25	6.38	6.74	6.76	6.83	6.26	6.76	6.40	6.90	6.55	6.66
<b>% URR &gt;= 65</b>	<b>96%</b>	<b>95%</b>	<b>95%</b>	<b>94%</b>	<b>95%</b>	<b>94%</b>	<b>96%</b>	<b>95%</b>	<b>96%</b>	<b>96%</b>	<b>96%</b>	<b>96%</b>



	Jan	Feb	Mar	Apr	May	Jun	Jul	Aug	Sep	Oct	Nov	Dec
# URR w/ 3tx/wk	1174	1166	1183	1212	1203	1198	1201	1208	1206	1226	1222	1245
# URR>=65 w/ 3tx/wk	1129	1118	1131	1152	1144	1137	1153	1148	1166	1180	1175	1206
Pop. Mean	76	76	76	76	76	76	76	76	76	76	76	76
Std. Deviation	6.20	6.11	6.20	6.45	6.65	6.66	6.18	6.62	6.28	6.78	6.49	6.56
<b>% URR&gt;=65 w/ 3tx/wk</b>	<b>96%</b>	<b>96%</b>	<b>96%</b>	<b>95%</b>	<b>95%</b>	<b>95%</b>	<b>96%</b>	<b>95%</b>	<b>97%</b>	<b>96%</b>	<b>96%</b>	<b>97%</b>

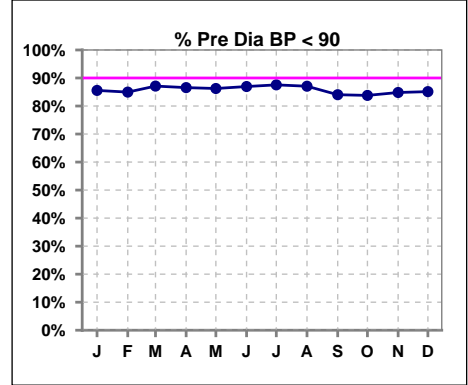


Methodology: a) All labs for 'Adequacy of Dialysis', 'Nutrition', 'Osteodystrophy', 'Anemia' and 'Diabetes' based on last value of month; b) BP's and #L processed are average of all values for month; c) Access data takes last access of month; d) Values for SGA and 'Infection Control' use most recent result.

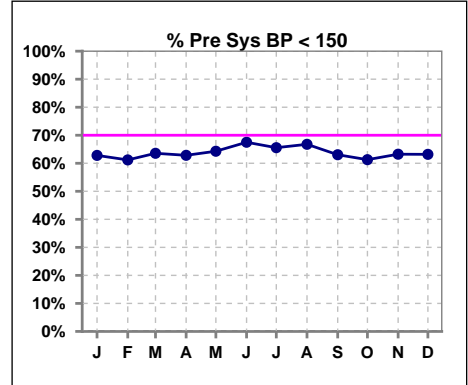
**I. ADEQUACY OF DIALYSIS - CONT.**

**Blood Pressure Control (Pre)**

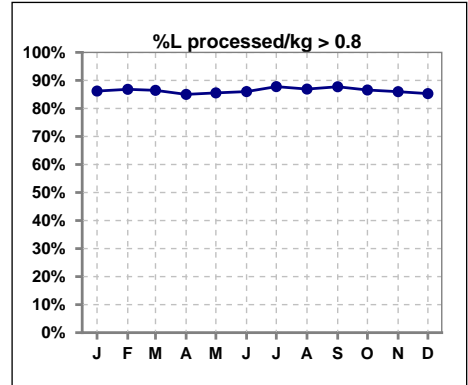
	Jan	Feb	Mar	Apr	May	Jun	Jul	Aug	Sep	Oct	Nov	Dec
# Pre Dia BP	1261	1237	1257	1281	1280	1280	1269	1276	1272	1289	1292	1312
# Pre Dia BP < 90	1079	1051	1095	1109	1104	1113	1111	1111	1069	1080	1096	1117
Pop. Mean	75	75	75	75	75	75	75	74	75	76	75	75
Std. Deviation	13.9	13.9	14.2	13.9	13.6	14.0	13.9	13.8	14.2	14.5	14.1	14.1
<b>% Pre Dia BP &lt; 90</b>	<b>86%</b>	<b>85%</b>	<b>87%</b>	<b>87%</b>	<b>86%</b>	<b>87%</b>	<b>88%</b>	<b>87%</b>	<b>84%</b>	<b>84%</b>	<b>85%</b>	<b>85%</b>



	Jan	Feb	Mar	Apr	May	Jun	Jul	Aug	Sep	Oct	Nov	Dec
# Pre Sys BP	1261	1237	1257	1281	1280	1280	1269	1276	1272	1289	1292	1312
# Pre Sys BP < 150	792	757	799	805	823	864	832	852	802	790	817	829
Pop. Mean	142	143	142	143	142	141	141	140	142	143	143	143
Std. Deviation	21.2	21.2	20.9	20.4	20.3	20.2	20.7	20.7	20.4	20.8	20.8	20.6
<b>%Pre Sys BP &lt;150</b>	<b>63%</b>	<b>61%</b>	<b>64%</b>	<b>63%</b>	<b>64%</b>	<b>68%</b>	<b>66%</b>	<b>67%</b>	<b>63%</b>	<b>61%</b>	<b>63%</b>	<b>63%</b>



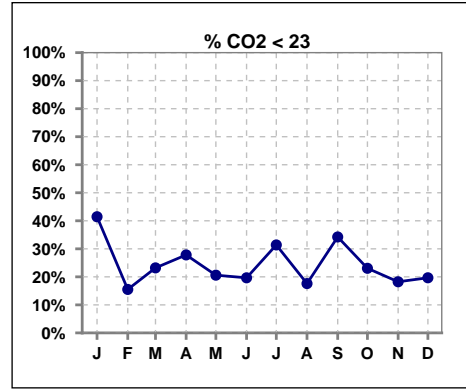
	Jan	Feb	Mar	Apr	May	Jun	Jul	Aug	Sep	Oct	Nov	Dec
# L processed/kg	1261	1237	1256	1281	1280	1280	1269	1276	1272	1289	1292	1312
# L processed/kg>0.8	1087	1074	1086	1089	1095	1101	1114	1109	1116	1116	1111	1119
Pop. Mean	1	1	1	1	1	1	1	1	1	1	1	1
Std. Deviation	0.3	0.3	0.3	0.3	0.3	0.3	0.3	0.3	0.3	0.3	0.3	0.3
<b>% L processed/kg&gt;0.8</b>	<b>86%</b>	<b>87%</b>	<b>86%</b>	<b>85%</b>	<b>86%</b>	<b>86%</b>	<b>88%</b>	<b>87%</b>	<b>88%</b>	<b>87%</b>	<b>86%</b>	<b>85%</b>



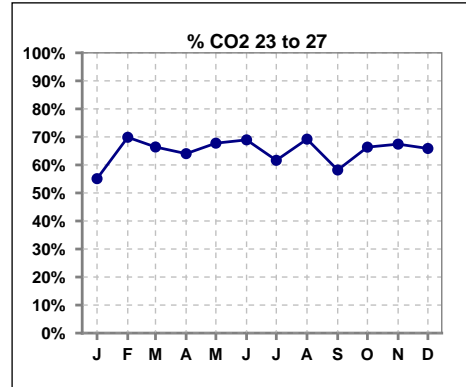
Methodology: a) All labs for 'Adequacy of Dialysis', 'Nutrition', 'Osteodystrophy', 'Anemia' and 'Diabetes' based on last value of month; b) BP's and #L processed are average of all values for month; c) Access data takes last access of month; d) Values for SGA and 'Infection Control' use most recent result.

**I. ADEQUACY OF DIALYSIS - CONT.**

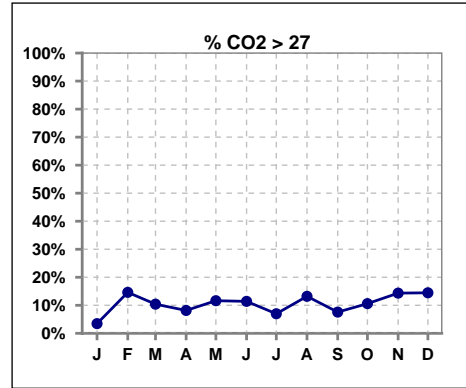
	Jan	Feb	Mar	Apr	May	Jun	Jul	Aug	Sep	Oct	Nov	Dec
# CO2	1245	1225	1250	1276	1272	1272	1262	1273	1268	1284	1283	1307
# CO2 < 23	516	190	290	355	262	250	396	224	434	296	234	257
Pop. Mean	23	25	24	24	24	24	24	25	24	24	25	25
Std. Deviation	2.69	2.68	2.66	2.75	2.77	2.78	2.67	2.60	2.99	2.95	2.72	2.78
<b>% CO2 &lt; 23</b>	<b>41%</b>	<b>16%</b>	<b>23%</b>	<b>28%</b>	<b>21%</b>	<b>20%</b>	<b>31%</b>	<b>18%</b>	<b>34%</b>	<b>23%</b>	<b>18%</b>	<b>20%</b>



	Jan	Feb	Mar	Apr	May	Jun	Jul	Aug	Sep	Oct	Nov	Dec
# CO2	1245	1225	1250	1276	1272	1272	1262	1273	1268	1284	1283	1307
# CO2 23 to 27	686	856	830	817	862	877	778	881	738	852	865	861
Pop. Mean	23	25	24	24	24	24	24	25	24	24	25	25
Std. Deviation	2.69	2.68	2.66	2.75	2.77	2.78	2.67	2.60	2.99	2.95	2.72	2.78
<b>% CO2 23 to 27</b>	<b>55%</b>	<b>70%</b>	<b>66%</b>	<b>64%</b>	<b>68%</b>	<b>69%</b>	<b>62%</b>	<b>69%</b>	<b>58%</b>	<b>66%</b>	<b>67%</b>	<b>66%</b>



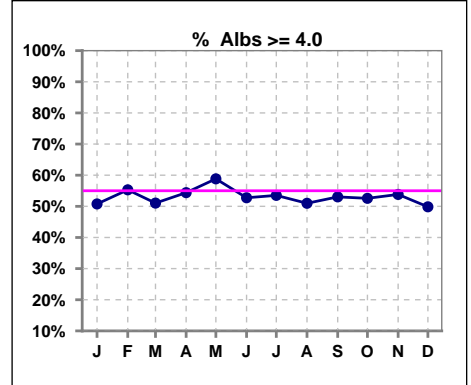
	Jan	Feb	Mar	Apr	May	Jun	Jul	Aug	Sep	Oct	Nov	Dec
# CO2	1245	1225	1250	1276	1272	1272	1262	1273	1268	1284	1283	1307
# CO2 > 27	43	179	130	104	148	145	88	168	96	136	184	189
Pop. Mean	23	25	24	24	24	24	24	25	24	24	25	25
Std. Deviation	2.69	2.68	2.66	2.75	2.77	2.78	2.67	2.60	2.99	2.95	2.72	2.78
<b>% CO2 &gt; 27</b>	<b>3%</b>	<b>15%</b>	<b>10%</b>	<b>8%</b>	<b>12%</b>	<b>11%</b>	<b>7%</b>	<b>13%</b>	<b>8%</b>	<b>11%</b>	<b>14%</b>	<b>14%</b>



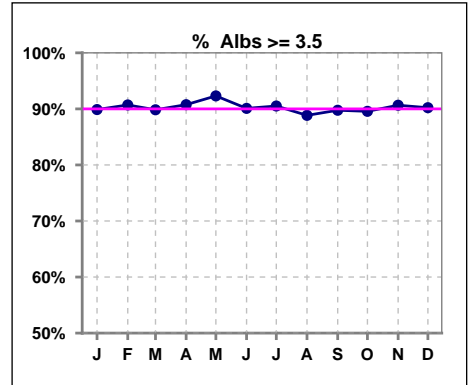
\*Albumin values use BCG method - as of July 2001

**II. NUTRITION**

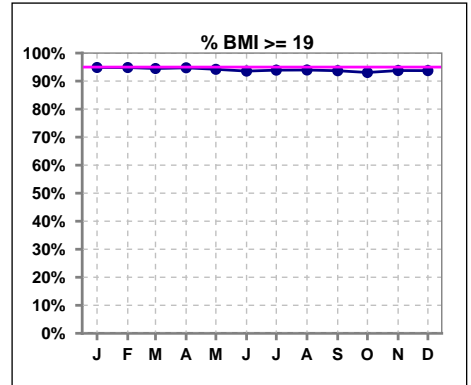
	Jan	Feb	Mar	Apr	May	Jun	Jul	Aug	Sep	Oct	Nov	Dec
# Albumin	1245	1226	1250	1276	1275	1272	1265	1273	1269	1284	1284	1308
# Albumin >= 4.0	632	678	638	694	750	671	677	649	673	675	691	652
Pop. Mean	3.9	4.0	3.9	3.9	4.0	3.9	3.9	3.9	3.9	3.9	3.9	3.9
Std. Deviation	0.38	0.38	0.39	0.38	0.37	0.39	0.36	0.38	0.39	0.38	0.38	0.38
% Alb >= 4.0	51%	55%	51%	54%	59%	53%	54%	51%	53%	53%	54%	50%



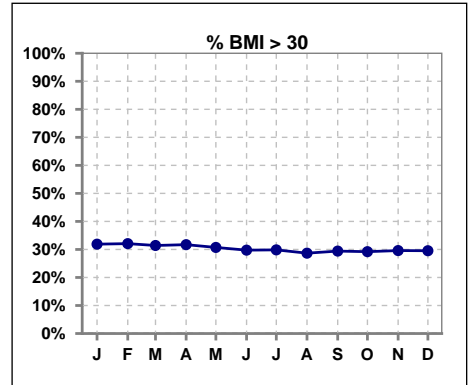
	Jan	Feb	Mar	Apr	May	Jun	Jul	Aug	Sep	Oct	Nov	Dec
# Albumin	1245	1226	1250	1276	1275	1272	1265	1273	1269	1284	1284	1308
# Albumin >= 3.5	1119	1112	1123	1158	1177	1146	1145	1131	1139	1150	1164	1180
Pop. Mean	3.9	4.0	3.9	3.9	4.0	3.9	3.9	3.9	3.9	3.9	3.9	3.9
Std. Deviation	0.38	0.38	0.39	0.38	0.37	0.39	0.36	0.38	0.39	0.38	0.38	0.38
% Alb >= 3.5	90%	91%	90%	91%	92%	90%	91%	89%	90%	90%	91%	90%



	Jan	Feb	Mar	Apr	May	Jun	Jul	Aug	Sep	Oct	Nov	Dec
# BMI	1223	1219	1259	1278	1285	1281	1270	1279	1278	1294	1297	1321
# BMI >= 19	1160	1156	1182	1207	1202	1192	1186	1196	1188	1195	1204	1228
Pop. Mean	28	28	28	28	28	28	28	28	28	28	28	28
Std. Deviation	18.7	18.7	23.4	23.4	23.7	23.7	23.5	21.5	21.4	22.0	21.9	21.7
% BMI >= 19	95%	95%	94%	95%	94%	94%	94%	94%	94%	93%	94%	94%



	Jan	Feb	Mar	Apr	May	Jun	Jul	Aug	Sep	Oct	Nov	Dec
# BMI	1223	1219	1259	1278	1285	1281	1270	1279	1278	1294	1297	1321
# BMI > 30	390	391	393	404	392	379	377	365	373	375	380	387
Pop. Mean	28	28	28	28	28	28	28	28	28	28	28	28
Std. Deviation	18.7	18.7	23.4	23.4	23.7	23.7	23.5	21.5	21.4	22.0	21.9	21.7
% BMI > 30	32%	32%	31%	32%	31%	30%	30%	29%	29%	29%	30%	30%

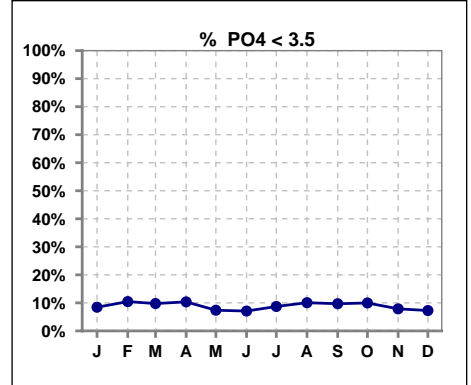


Methodology: a) All labs for 'Adequacy of Dialysis', 'Nutrition', 'Osteodystrophy', 'Anemia' and 'Diabetes' based on last value of month; b) BP's and #L processed are average of all values for month; c) Access data takes last access of month; d) Values for SGA and 'Infection Control' use most recent result.

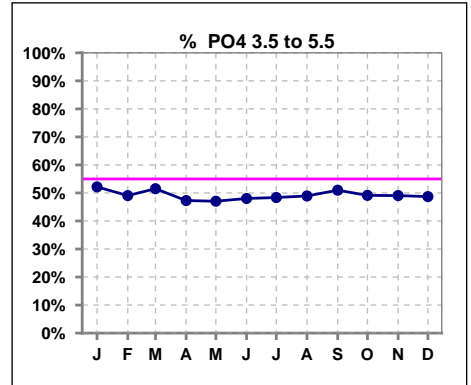
Lab methodology for PTH changed January 2012

**III. OSTEODYSTROPHY**

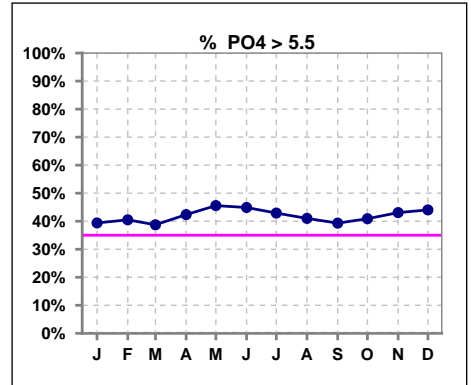
	Jan	Feb	Mar	Apr	May	Jun	Jul	Aug	Sep	Oct	Nov	Dec
# PO4	1244	1225	1250	1275	1275	1272	1263	1273	1269	1284	1284	1308
# PO4 < 3.5	105	128	122	132	94	90	110	128	123	128	101	95
Pop. Mean	5.4	5.3	5.3	5.4	5.6	5.6	5.5	5.5	5.4	5.4	5.6	5.6
Std. Deviation	1.66	1.72	1.71	1.70	1.69	1.74	1.75	1.74	1.72	1.76	1.78	1.78
% PO4 < 3.5	8%	10%	10%	10%	7%	7%	9%	10%	10%	10%	8%	7%



	Jan	Feb	Mar	Apr	May	Jun	Jul	Aug	Sep	Oct	Nov	Dec
# PO4	1244	1225	1250	1275	1275	1272	1263	1273	1269	1284	1284	1308
# PO4 3.5 to 5.5	649	601	644	603	600	611	611	623	647	631	630	637
Pop. Mean	5.4	5.3	5.3	5.4	5.6	5.6	5.5	5.5	5.4	5.4	5.6	5.6
Std. Deviation	1.66	1.72	1.71	1.70	1.69	1.74	1.75	1.74	1.72	1.76	1.78	1.78
% PO4 3.5 to 5.5	52%	49%	52%	47%	47%	48%	48%	49%	51%	49%	49%	49%



	Jan	Feb	Mar	Apr	May	Jun	Jul	Aug	Sep	Oct	Nov	Dec
# PO4	1244	1225	1250	1275	1275	1272	1263	1273	1269	1284	1284	1308
# PO4 > 5.5	490	496	484	540	581	571	542	522	499	525	553	576
Pop. Mean	5.4	5.3	5.3	5.4	5.6	5.6	5.5	5.5	5.4	5.4	5.6	5.6
Std. Deviation	1.66	1.72	1.71	1.70	1.69	1.74	1.75	1.74	1.72	1.76	1.78	1.78
% PO4 > 5.5	39%	40%	39%	42%	46%	45%	43%	41%	39%	41%	43%	44%

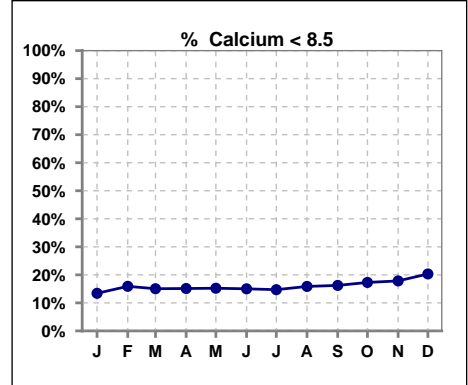


Methodology: a) All labs for 'Adequacy of Dialysis', 'Nutrition', 'Osteodystrophy', 'Anemia' and 'Diabetes' based on last value of month; b) BP's and #L processed are average of all values for month; c) Access data takes last access of month; d) Values for SGA and 'Infection Control' use most recent result.

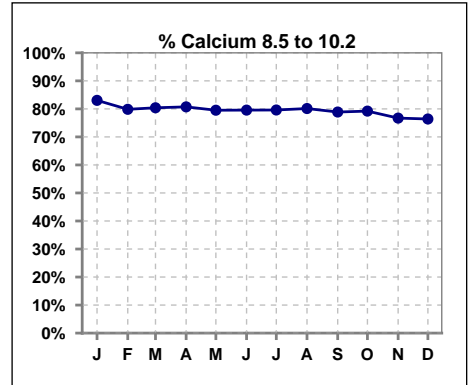
Lab methodology for PTH changed January 2012

**III. OSTEODYSTROPHY - CONT.**

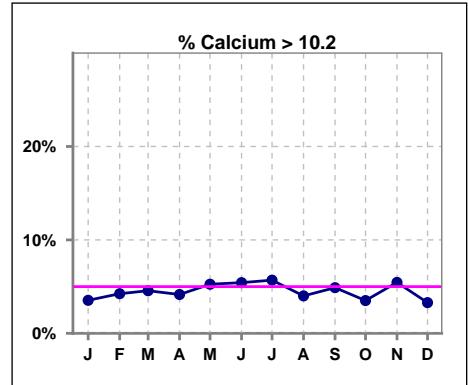
	Jan	Feb	Mar	Apr	May	Jun	Jul	Aug	Sep	Oct	Nov	Dec
# Calcium	1245	1226	1250	1276	1275	1272	1265	1273	1269	1284	1284	1309
# Calcium < 8.5	167	195	188	193	194	191	186	202	206	222	229	266
Pop. Mean	9.2	9.1	9.2	9.1	9.2	9.2	9.2	9.1	9.2	9.1	9.1	9.0
Std. Deviation	0.69	0.70	0.73	0.73	0.75	0.75	0.73	0.75	0.75	0.72	0.80	0.78
<b>% Calcium &lt; 8.5</b>	<b>13%</b>	<b>16%</b>	<b>15%</b>	<b>15%</b>	<b>15%</b>	<b>15%</b>	<b>15%</b>	<b>16%</b>	<b>16%</b>	<b>17%</b>	<b>18%</b>	<b>20%</b>



	Jan	Feb	Mar	Apr	May	Jun	Jul	Aug	Sep	Oct	Nov	Dec
# Calcium	1245	1226	1250	1276	1275	1272	1265	1273	1269	1284	1284	1309
# Calcium 8.5 to 10.2	1034	979	1005	1030	1014	1012	1007	1020	1001	1017	985	1000
Pop. Mean	9.2	9.1	9.2	9.1	9.2	9.2	9.2	9.1	9.2	9.1	9.1	9.0
Std. Deviation	0.69	0.70	0.73	0.73	0.75	0.75	0.73	0.75	0.75	0.72	0.80	0.78
<b>% Calcium 8.5 to 10.2</b>	<b>83%</b>	<b>80%</b>	<b>80%</b>	<b>81%</b>	<b>80%</b>	<b>80%</b>	<b>80%</b>	<b>80%</b>	<b>79%</b>	<b>79%</b>	<b>77%</b>	<b>76%</b>



	Jan	Feb	Mar	Apr	May	Jun	Jul	Aug	Sep	Oct	Nov	Dec
# Calcium	1245	1226	1250	1276	1275	1272	1265	1273	1269	1284	1284	1309
# Calcium > 10.2	44	52	57	53	67	69	72	51	62	45	70	43
Pop. Mean	9.2	9.1	9.2	9.1	9.2	9.2	9.2	9.1	9.2	9.1	9.1	9.0
Std. Deviation	0.69	0.70	0.73	0.73	0.75	0.75	0.73	0.75	0.75	0.72	0.80	0.78
<b>% Calcium &gt; 10.2</b>	<b>4%</b>	<b>4%</b>	<b>5%</b>	<b>4%</b>	<b>5%</b>	<b>5%</b>	<b>6%</b>	<b>4%</b>	<b>5%</b>	<b>4%</b>	<b>5%</b>	<b>3%</b>

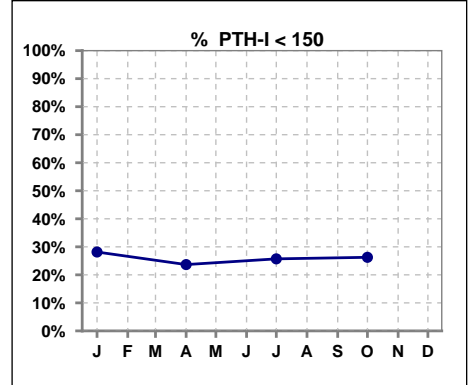


Methodology: a) All labs for 'Adequacy of Dialysis', 'Nutrition', 'Osteodystrophy', 'Anemia' and 'Diabetes' based on last value of month; b) BP's and #L processed are average of all values for month; c) Access data takes last access of month; d) Values for SGA and 'Infection Control' use most recent result.

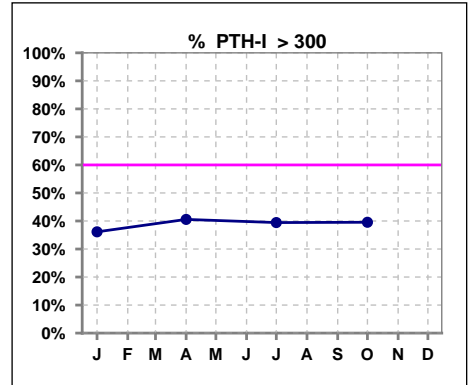
Lab methodology for PTH changed January 2012

**III. OSTEODYSTROPHY - CONT.**

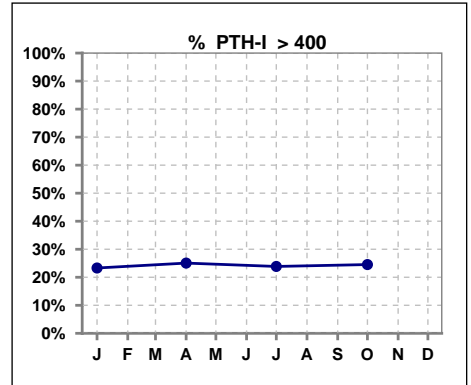
	Jan	Feb	Mar	Apr	May	Jun	Jul	Aug	Sep	Oct	Nov	Dec
# PTH-I	1240			1213			1245			1219		
# PTH-I < 150	349			287			320			320		
Pop. Mean	296			315			300			296		
Std. Deviation	254			268			235			223		
<b>% PTH-I &lt; 150</b>	<b>28%</b>			<b>24%</b>			<b>26%</b>			<b>26%</b>		



	Jan	Feb	Mar	Apr	May	Jun	Jul	Aug	Sep	Oct	Nov	Dec
# PTH-I	1240			1213			1245			1219		
# PTH-I > 300	448			492			491			482		
Pop. Mean	296			315			300			296		
Std. Deviation	254			268			235			223		
<b>% PTH-I &gt; 300</b>	<b>36%</b>			<b>41%</b>			<b>39%</b>			<b>40%</b>		



	Jan	Feb	Mar	Apr	May	Jun	Jul	Aug	Sep	Oct	Nov	Dec
# PTH-I	1240			1213			1245			1219		
# PTH-I > 400	289			304			297			299		
Pop. Mean	296			315			300			296		
Std. Deviation	254			268			235			223		
<b>% PTH-I &gt; 400</b>	<b>23%</b>			<b>25%</b>			<b>24%</b>			<b>25%</b>		

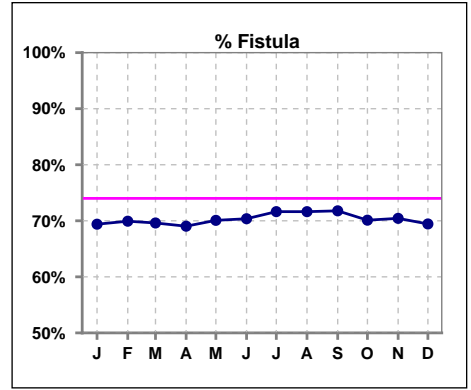


Methodology: a) All labs for 'Adequacy of Dialysis', 'Nutrition', 'Osteodystrophy', 'Anemia' and 'Diabetes' based on last value of month; b) BP's and #L processed are average of all values for month; c) Access data takes last access of month; d) Values for SGA and 'Infection Control' use most recent result.

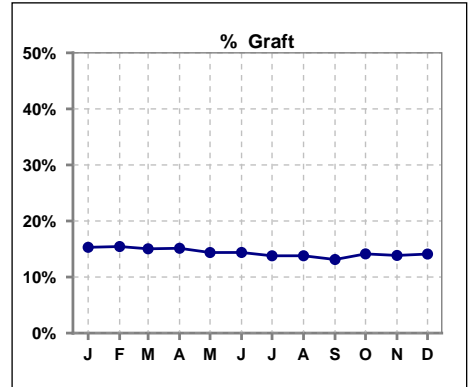


**IV. ACCESS**

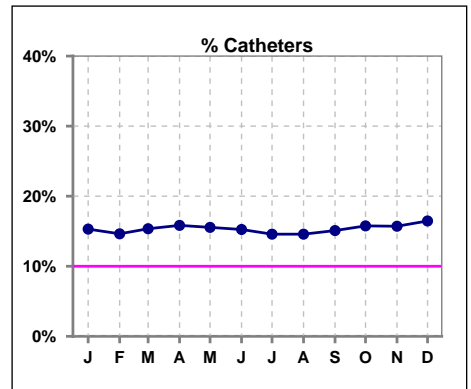
	Jan	Feb	Mar	Apr	May	Jun	Jul	Aug	Sep	Oct	Nov	Dec
<b># Access</b>	1261	1237	1257	1282	1280	1279	1269	1276	1272	1288	1292	1312
<b># Fistula</b>	875	865	875	885	897	900	909	914	913	903	910	911
<b>% Fistula</b>	69%	70%	70%	69%	70%	70%	72%	72%	72%	70%	70%	69%



	Jan	Feb	Mar	Apr	May	Jun	Jul	Aug	Sep	Oct	Nov	Dec
<b># Access</b>	1261	1237	1257	1282	1280	1279	1269	1276	1272	1288	1292	1312
<b># Graft</b>	193	191	189	194	184	184	175	176	167	182	179	185
<b>% Graft</b>	15%	15%	15%	15%	14%	14%	14%	14%	13%	14%	14%	14%



	Jan	Feb	Mar	Apr	May	Jun	Jul	Aug	Sep	Oct	Nov	Dec
<b># Access</b>	1261	1237	1257	1282	1280	1279	1269	1276	1272	1288	1292	1312
<b># Catheters</b>	193	181	193	203	199	195	185	186	192	203	203	216
<b>% Catheters</b>	15%	15%	15%	16%	16%	15%	15%	15%	15%	16%	16%	16%



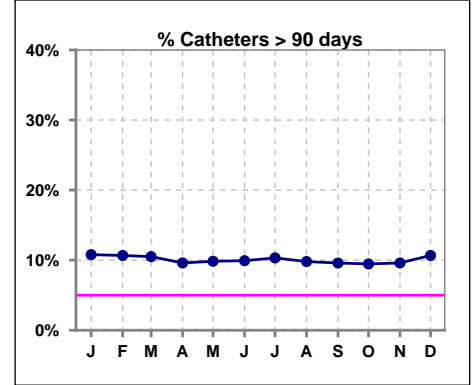
Methodology: a) All labs for 'Adequacy of Dialysis', 'Nutrition', 'Osteodystrophy', 'Anemia' and 'Diabetes' based on last value of month; b) BP's and #L processed are average of all values for month; c) Access data takes last access of month; d) Values for SGA and 'Infection Control' use most recent result.

**IV. ACCESS - CONT.**

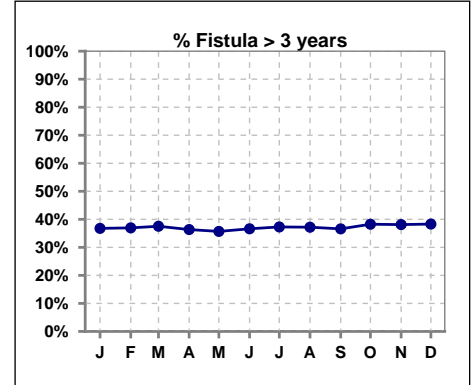
**Catheters > 90 days**

	Jan	Feb	Mar	Apr	May	Jun	Jul	Aug	Sep	Oct	Nov	Dec
<b># Access</b>	1261	1237	1257	1281	1280	1280	1269	1276	1272	1289	1292	1312
<b># Catheters</b>	136	132	132	123	126	127	131	125	122	122	124	140
<b>% Catheters</b>	11%	11%	11%	10%	10%	10%	10%	10%	10%	9%	10%	11%

**Definition:** Catheter in use on last treatment of the month



	Jan	Feb	Mar	Apr	May	Jun	Jul	Aug	Sep	Oct	Nov	Dec
<b># Fistula</b>	873	866	882	894	908	912	912	925	921	915	913	911
<b># Fistula &gt; 3 yrs</b>	321	320	331	325	324	334	340	344	337	350	348	349
<b>% Fistula &gt; 3 yrs</b>	37%	37%	38%	36%	36%	37%	37%	37%	37%	38%	38%	38%

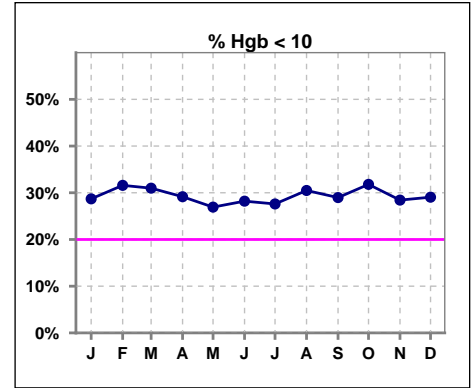


**Methodology:** a) All labs for 'Adequacy of Dialysis', 'Nutrition', 'Osteodystrophy', 'Anemia' and 'Diabetes' based on last value of month; b) BP's and #L processed are average of all values for month; c) Access data takes last access of month; d) Values for SGA and 'Infection Control' use most recent result.

**V. ANEMIA**

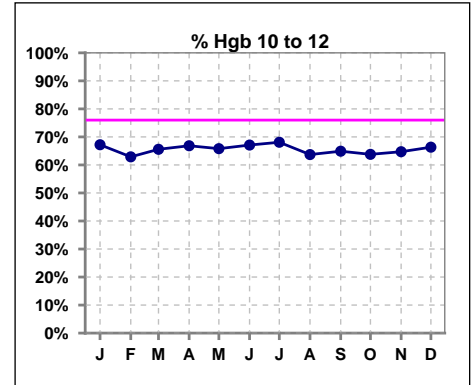
	Jan	Feb	Mar	Apr	May	Jun	Jul	Aug	Sep	Oct	Nov	Dec
# Hgb	1049	1032	1049	1077	1088	1085	1094	1102	1077	1107	1094	1105
# Hgb < 10	301	326	325	314	293	306	302	336	312	352	311	321
Pop. Mean	10.4	10.4	10.4	10.4	10.6	10.5	10.4	10.5	10.5	10.4	10.5	10.4
Std. Deviation	1.1	1.1	1.1	1.1	1.2	1.1	1.1	1.1	1.1	1.1	1.1	1.1
% Hgb < 10	29%	32%	31%	29%	27%	28%	28%	30%	29%	32%	28%	29%

Note: Excludes patients who received no ESA in month.



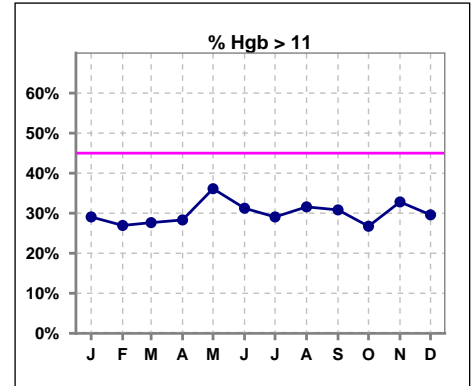
	Jan	Feb	Mar	Apr	May	Jun	Jul	Aug	Sep	Oct	Nov	Dec
# Hgb	1049	1032	1049	1077	1088	1085	1094	1102	1077	1107	1094	1105
# Hgb 10 to 12	705	649	688	720	716	728	745	702	699	706	708	733
Pop. Mean	10.4	10.4	10.4	10.4	10.6	10.5	10.4	10.5	10.5	10.4	10.5	10.4
Std. Deviation	1.1	1.1	1.1	1.1	1.2	1.1	1.1	1.1	1.1	1.1	1.1	1.1
% Hgb 10 to 12	67%	63%	66%	67%	66%	67%	68%	64%	65%	64%	65%	66%

Note: Excludes patients who received no ESA in month.



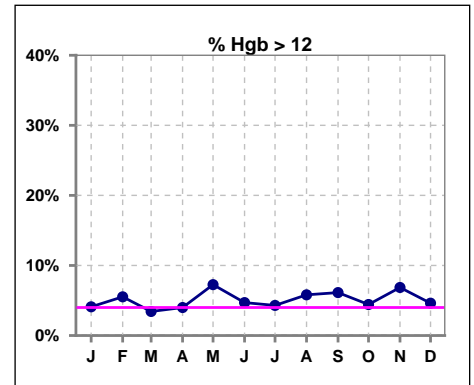
	Jan	Feb	Mar	Apr	May	Jun	Jul	Aug	Sep	Oct	Nov	Dec
# Hgb	1049	1032	1049	1077	1088	1085	1094	1102	1077	1107	1094	1105
# Hgb > 11	305	278	290	305	393	339	318	348	332	296	359	327
Pop. Mean	10.4	10.4	10.4	10.4	10.6	10.5	10.4	10.5	10.5	10.4	10.5	10.4
Std. Deviation	1.1	1.1	1.1	1.1	1.2	1.1	1.1	1.1	1.1	1.1	1.1	1.1
% Hgb > 11	29%	27%	28%	28%	36%	31%	29%	32%	31%	27%	33%	30%

Note: Excludes patients who received no ESA in month.



	Jan	Feb	Mar	Apr	May	Jun	Jul	Aug	Sep	Oct	Nov	Dec
# Hgb	1049	1032	1049	1077	1088	1085	1094	1102	1077	1107	1094	1105
# Hgb > 12	43	57	36	43	79	51	47	64	66	49	75	51
Pop. Mean	10.4	10.4	10.4	10.4	10.6	10.5	10.4	10.5	10.5	10.4	10.5	10.4
Std. Deviation	1.1	1.1	1.1	1.1	1.2	1.1	1.1	1.1	1.1	1.1	1.1	1.1
% Hgb > 12	4%	6%	3%	4%	7%	5%	4%	6%	6%	4%	7%	5%

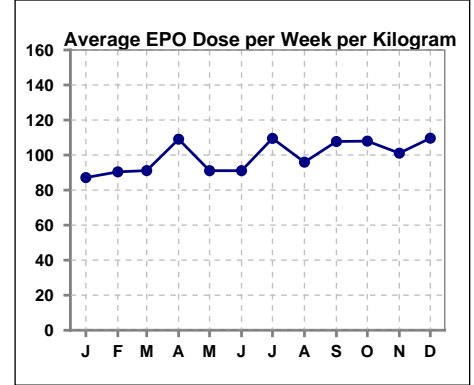
Note: Excludes patients who received no ESA in month.



**V. ANEMIA - CONT.**

Average EPO Dose per Week per Kilogram

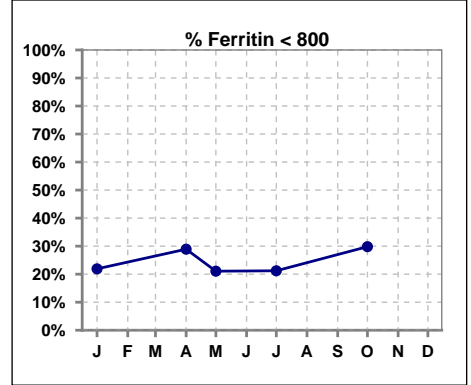
	Jan	Feb	Mar	Apr	May	Jun	Jul	Aug	Sep	Oct	Nov	Dec
# Average EPO	87.2	90.4	91.1	109.1	91.1	91.1	109.5	96.0	107.7	108.0	101.1	109.6



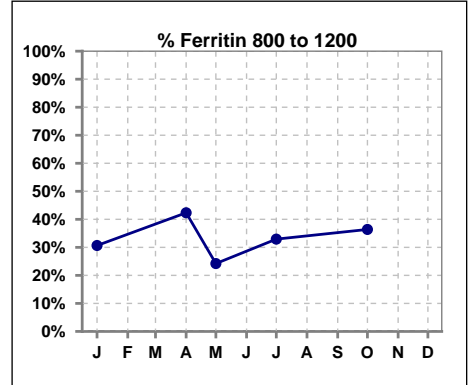
**V. ANEMIA - CONT.**

**Iron Profile**

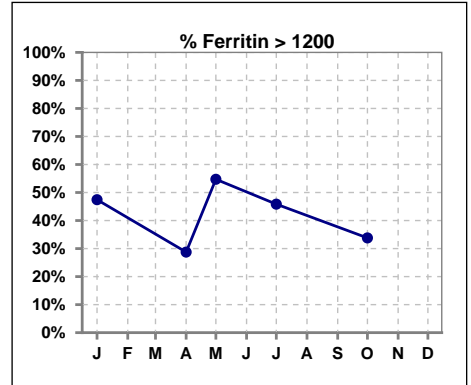
	Jan	Feb	Mar	Apr	May	Jun	Jul	Aug	Sep	Oct	Nov	Dec
# Ferritin	1233			1259	413		1254			1275		
# Ferritin < 800	270			364	87		266			380		
Pop. Mean	1189			1022	1232		1189			1059		
Std. Deviation	546			462	577		591			535		
<b>% Ferritin &lt; 800</b>	<b>22%</b>			<b>29%</b>	<b>21%</b>		<b>21%</b>			<b>30%</b>		



	Jan	Feb	Mar	Apr	May	Jun	Jul	Aug	Sep	Oct	Nov	Dec
# Ferritin	1233			1259	413		1254			1275		
# Ferritin 800 to 1200	378			533	100		413			464		
Pop. Mean	1189			1022	1232		1189			1059		
Std. Deviation	546			462	577		591			535		
<b>% Ferritin 800 to 1200</b>	<b>31%</b>			<b>42%</b>	<b>24%</b>		<b>33%</b>			<b>36%</b>		



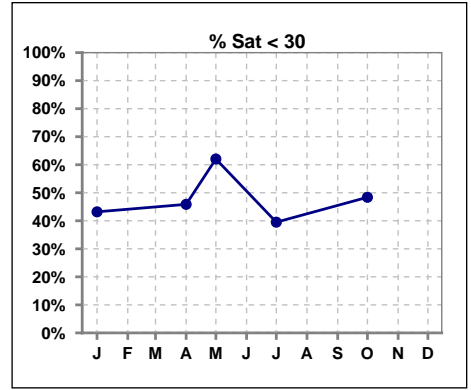
	Jan	Feb	Mar	Apr	May	Jun	Jul	Aug	Sep	Oct	Nov	Dec
# Ferritin	1233			1259	413		1254			1275		
# Ferritin > 1200	585			362	226		575			431		
Pop. Mean	1189			1022	1232		1189			1059		
Std. Deviation	546			462	577		591			535		
<b>% Ferritin &gt; 1200</b>	<b>47%</b>			<b>29%</b>	<b>55%</b>		<b>46%</b>			<b>34%</b>		



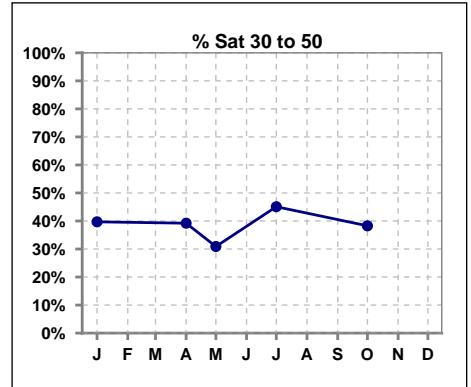
Methodology: a) All labs for 'Adequacy of Dialysis', 'Nutrition', 'Osteodystrophy', 'Anemia' and 'Diabetes' based on last value of month; b) BP's and #L processed are average of all values for month; c) Access data takes last access of month; d) Values for SGA and 'Infection Control' use most recent result.

**V. ANEMIA - CONT.**

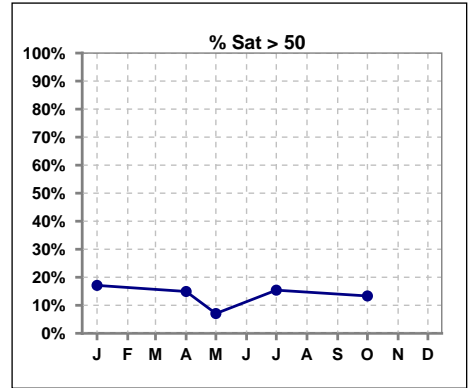
	Jan	Feb	Mar	Apr	May	Jun	Jul	Aug	Sep	Oct	Nov	Dec
# % Sat	1234			1260	411		1253			1275		
# % Sat < 30	533			578	255		495			617		
Pop. Mean	36			34	29		36			34		
Std. Deviation	18			18	15		18			19		
% % Sat < 30	43%			46%	62%		40%			48%		



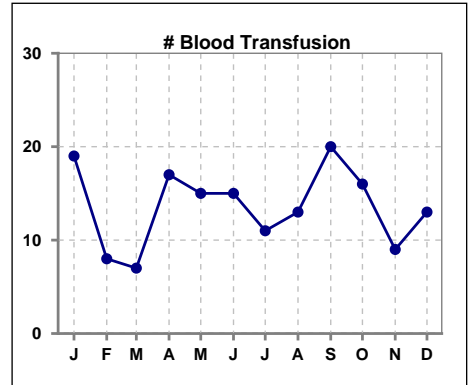
	Jan	Feb	Mar	Apr	May	Jun	Jul	Aug	Sep	Oct	Nov	Dec
# % Sat	1234			1260	411		1253			1275		
# % Sat 30 to 50	490			494	127		565			488		
Pop. Mean	36			34	29		36			34		
Std. Deviation	18			18	15		18			19		
% % Sat 30 to 50	40%			39%	31%		45%			38%		



	Jan	Feb	Mar	Apr	May	Jun	Jul	Aug	Sep	Oct	Nov	Dec
# % Sat	1234			1260	411		1253			1275		
# % Sat > 50	211			188	29		193			170		
Pop. Mean	36			34	29		36			34		
Std. Deviation	18			18	15		18			19		
% % Sat > 50	17%			15%	7%		15%			13%		



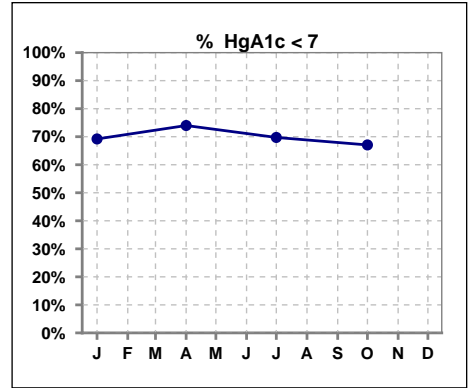
	Jan	Feb	Mar	Apr	May	Jun	Jul	Aug	Sep	Oct	Nov	Dec
# Patient	1234	1239	1264	1286	1290	1287	1276	1283	1283	1300	1307	1324
# Blood Transfusion	19	8	7	17	15	15	11	13	20	16	9	13



Methodology: a) All labs for 'Adequacy of Dialysis', 'Nutrition', 'Osteodystrophy', 'Anemia' and 'Diabetes' based on last value of month; b) BP's and #L processed are average of all values for month; c) Access data takes last access of month; d) Values for SGA and 'Infection Control' use most recent result.

**VI. Diabetes**

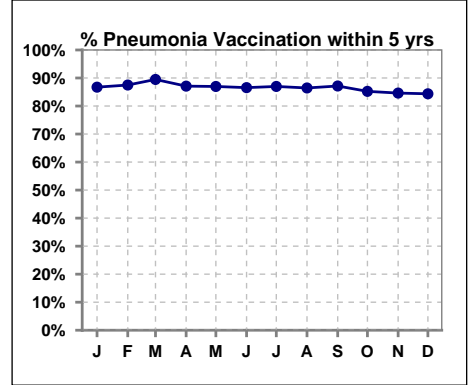
	Jan	Feb	Mar	Apr	May	Jun	Jul	Aug	Sep	Oct	Nov	Dec
# HgA1c	669			673			641			665		
# HgA1c < 7	463			498			447			446		
Pop. Mean	6.6			6.4			6.6			6.7		
Std. Deviation	1.42			1.24			1.30			1.37		
<b>% HgA1c &lt; 7</b>	<b>69%</b>			<b>74%</b>			<b>70%</b>			<b>67%</b>		



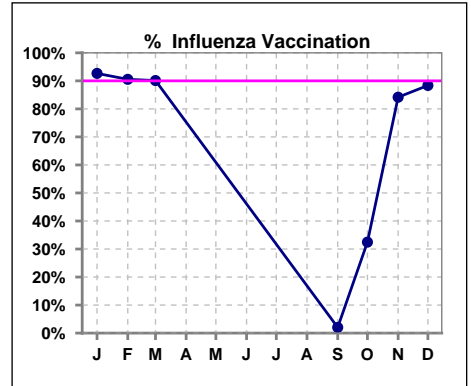
**VII. Infection Control**

**Pneumonia vaccination within the past five years**

	Jan	Feb	Mar	Apr	May	Jun	Jul	Aug	Sep	Oct	Nov	Dec
<b># Patient</b>	1236	1231	1264	1286	1290	1287	1276	1283	1283	1300	1307	1324
<b># Pneumonia</b>	1072	1077	1131	1120	1122	1114	1110	1109	1118	1108	1106	1117
<b>% Pneumonia</b>	87%	87%	89%	87%	87%	87%	87%	86%	87%	85%	85%	84%



	Jan	Feb	Mar	Apr	May	Jun	Jul	Aug	Sep	Oct	Nov	Dec
<b># Patient</b>	1228	1227	1264						1283	1300	1307	1324
<b># Influenza</b>	1138	1111	1139						26	422	1100	1170
<b>% Influenza</b>	93%	91%	90%						2%	32%	84%	88%

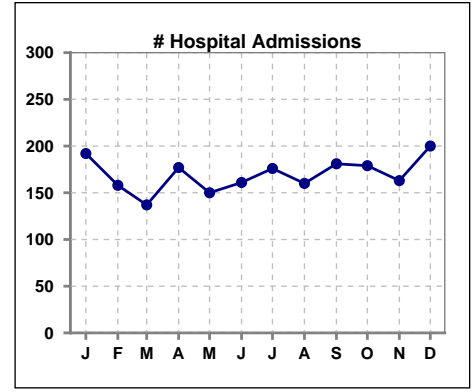


Methodology: a) All labs for 'Adequacy of Dialysis', 'Nutrition', 'Osteodystrophy', 'Anemia' and 'Diabetes' based on last value of month; b) BP's and #L processed are average of all values for month; c) Access data takes last access of month; d) Values for SGA and 'Infection Control' use most recent result.

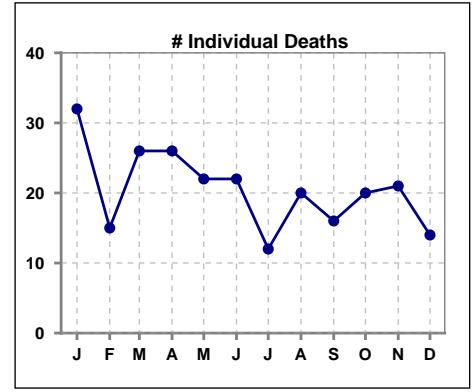


**VIII. Misc**

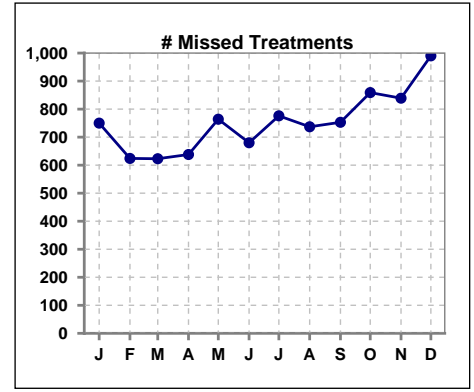
	Jan	Feb	Mar	Apr	May	Jun	Jul	Aug	Sep	Oct	Nov	Dec
<b># Patient</b>	1234	1239	1264	1286	1290	1287	1276	1283	1283	1300	1307	1324
<b># Hospital Admissions</b>	192	158	137	177	150	161	176	160	181	179	163	200



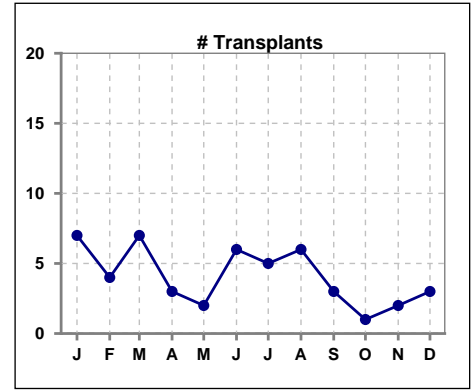
	Jan	Feb	Mar	Apr	May	Jun	Jul	Aug	Sep	Oct	Nov	Dec
<b># Patient</b>	1234	1239	1264	1286	1290	1287	1276	1283	1283	1300	1307	1324
<b># Individual Deaths</b>	32	15	26	26	22	22	12	20	16	20	21	14



	Jan	Feb	Mar	Apr	May	Jun	Jul	Aug	Sep	Oct	Nov	Dec
<b># Patient</b>	1234	1239	1264	1286	1290	1287	1276	1283	1283	1300	1307	1324
<b># Missed Treatments</b>	750	624	623	638	764	680	776	737	753	859	839	990



	Jan	Feb	Mar	Apr	May	Jun	Jul	Aug	Sep	Oct	Nov	Dec
<b># Patient</b>	1234	1239	1264	1286	1290	1287	1276	1283	1283	1300	1307	1324
<b># Transplants</b>	7	4	7	3	2	6	5	6	3	1	2	3



Methodology: a) All labs for 'Adequacy of Dialysis', 'Nutrition', 'Osteodystrophy', 'Anemia' and 'Diabetes' based on last value of month; b) BP's and #L processed are average of all values for month; c) Access data takes last access of month; d) Values for SGA and 'Infection Control' use most recent result.