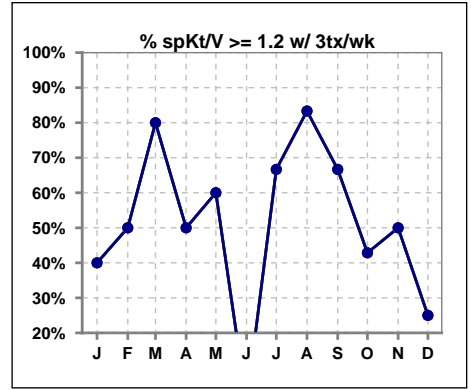
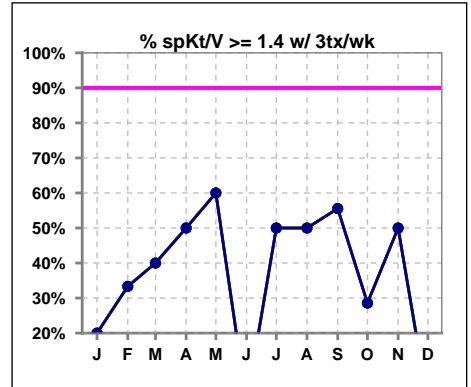


**I. ADEQUACY OF DIALYSIS**

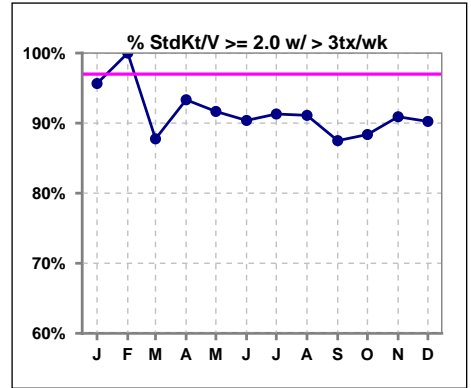
	Jan	Feb	Mar	Apr	May	Jun	Jul	Aug	Sep	Oct	Nov	Dec
# spKt/V w/3tx/wk	5	6	5	4	5	2	6	6	9	7	6	4
# spKt/V>=1.2 w/3tx/wk	2	3	4	2	3	0	4	5	6	3	3	1
Pop. Mean	1.02	1.13	1.32	1.15	1.27	1.05	1.24	1.43	1.33	1.08	1.26	0.99
Std. Deviation	0.32	0.48	0.39	0.61	0.44	0.13	0.50	0.30	0.35	0.36	0.40	0.23
% >=1.2 w/3tx/wk	40%	50%	80%	50%	60%	0%	67%	83%	67%	43%	50%	25%



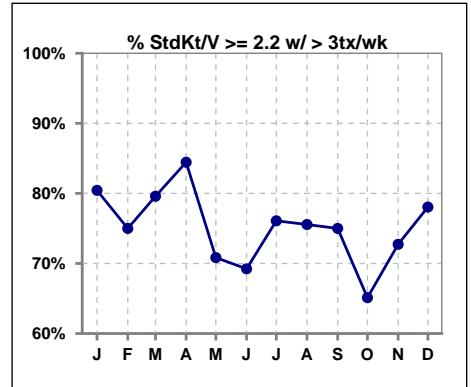
	Jan	Feb	Mar	Apr	May	Jun	Jul	Aug	Sep	Oct	Nov	Dec
# spKt/V w/3tx/wk	5	6	5	4	5	2	6	6	9	7	6	4
# spKt/V>=1.4 w/3tx/wk	1	2	2	2	3	0	3	3	5	2	3	0
Pop. Mean	1.02	1.13	1.32	1.15	1.27	1.05	1.24	1.43	1.33	1.08	1.26	0.99
Std. Deviation	0.32	0.48	0.39	0.61	0.44	0.13	0.50	0.30	0.35	0.36	0.40	0.23
% >=1.4 w/3tx/wk	20%	33%	40%	50%	60%	0%	50%	50%	56%	29%	50%	0%



	Jan	Feb	Mar	Apr	May	Jun	Jul	Aug	Sep	Oct	Nov	Dec
# StdKt/V w/>3tx/wk	46	44	49	45	48	52	46	45	40	43	44	41
# >= 2.0 w/>3tx/wk	44	44	43	42	44	47	42	41	35	38	40	37
Pop. Mean	2.48	2.39	2.41	2.44	2.39	2.32	2.44	2.53	2.43	2.41	2.45	2.37
Std. Deviation	0.32	0.24	0.44	0.31	0.37	0.39	0.42	0.68	0.48	0.39	0.46	0.29
% >= 2.0 w/>3tx/wk	96%	100%	88%	93%	92%	90%	91%	91%	88%	88%	91%	90%



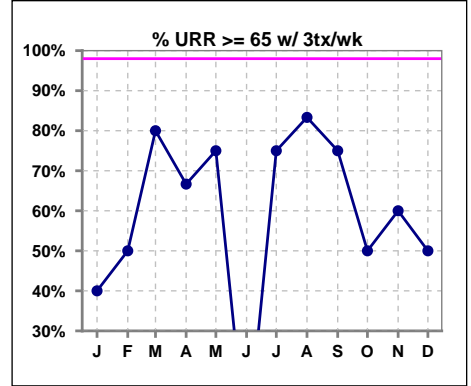
	Jan	Feb	Mar	Apr	May	Jun	Jul	Aug	Sep	Oct	Nov	Dec
# StdKt/V w/>3tx/wk	46	44	49	45	48	52	46	45	40	43	44	41
# >= 2.2 w/>3tx/wk	37	33	39	38	34	36	35	34	30	28	32	32
Pop. Mean	2.48	2.39	2.41	2.44	2.39	2.32	2.44	2.53	2.43	2.41	2.45	2.37
Std. Deviation	0.32	0.24	0.44	0.31	0.37	0.39	0.42	0.68	0.48	0.39	0.46	0.29
% >= 2.2 w/>3tx/wk	80%	75%	80%	84%	71%	69%	76%	76%	75%	65%	73%	78%



Methodology: a) All labs for 'Adequacy of Dialysis', 'Nutrition', 'Osteodystrophy' and 'Anemia' based on last value of month; b) Access data takes last access of month; c) Values for 'Infection Control' uses most recent result.

**I. ADEQUACY OF DIALYSIS - CONT.**

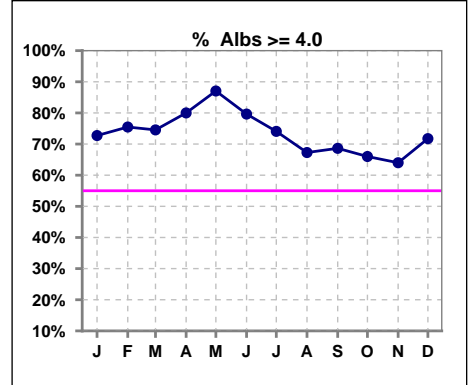
	Jan	Feb	Mar	Apr	May	Jun	Jul	Aug	Sep	Oct	Nov	Dec
# URR w/ 3tx/wk	5	6	5	3	4	2	4	6	8	8	5	2
# URR>=65 w/ 3tx/wk	2	3	4	2	3	0	3	5	6	4	3	1
Pop. Mean	57	59	66	65	67	60	68	71	68	57	66	54
Std. Deviation	12.17	17.06	14.76	18.93	16.63	4.39	11.48	7.36	11.99	15.03	13.97	16.39
% URR>=65 w/ 3tx/wk	40%	50%	80%	67%	75%	0%	75%	83%	75%	50%	60%	50%



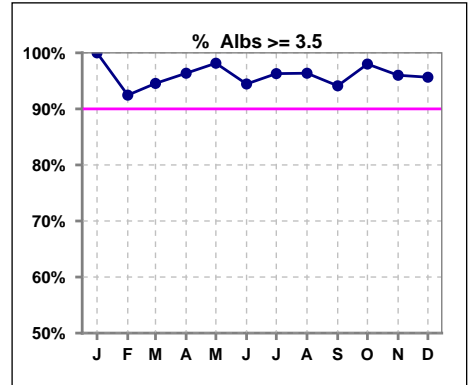
\*Albumin values use BCG method - as of July 2001

**II. NUTRITION**

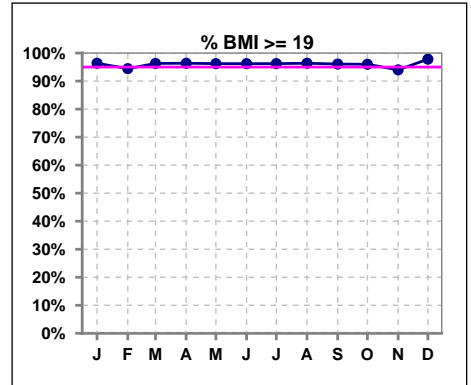
	Jan	Feb	Mar	Apr	May	Jun	Jul	Aug	Sep	Oct	Nov	Dec
# Albumin	55	53	55	55	54	54	54	55	51	50	50	46
# Albumin >= 4.0	40	40	41	44	47	43	40	37	35	33	32	33
Pop. Mean	4.1	4.2	4.1	4.2	4.2	4.2	4.2	4.1	4.1	4.1	4.1	4.1
Std. Deviation	0.28	0.42	0.40	0.44	0.34	0.45	0.35	0.35	0.33	0.32	0.40	0.39
% Alb >= 4.0	73%	75%	75%	80%	87%	80%	74%	67%	69%	66%	64%	72%



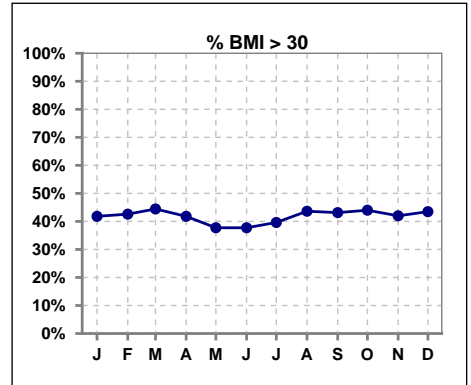
	Jan	Feb	Mar	Apr	May	Jun	Jul	Aug	Sep	Oct	Nov	Dec
# Albumin	55	53	55	55	54	54	54	55	51	50	50	46
# Albumin >= 3.5	55	49	52	53	53	51	52	53	48	49	48	44
Pop. Mean	4.1	4.2	4.1	4.2	4.2	4.2	4.2	4.1	4.1	4.1	4.1	4.1
Std. Deviation	0.28	0.42	0.40	0.44	0.34	0.45	0.35	0.35	0.33	0.32	0.40	0.39
% Alb >= 3.5	100%	92%	95%	96%	98%	94%	96%	96%	94%	98%	96%	96%



	Jan	Feb	Mar	Apr	May	Jun	Jul	Aug	Sep	Oct	Nov	Dec
# BMI	55	54	55	55	55	55	55	55	51	50	50	46
# BMI >= 19	53	51	52	53	51	51	51	53	49	48	47	45
Pop. Mean	30	30	32	32	32	32	32	31	31	31	31	31
Std. Deviation	8.6	8.5	13.7	13.7	13.8	13.9	14.1	9.0	9.1	9.0	9.0	9.1
% BMI >= 19	96%	94%	96%	96%	96%	96%	96%	96%	96%	96%	94%	98%



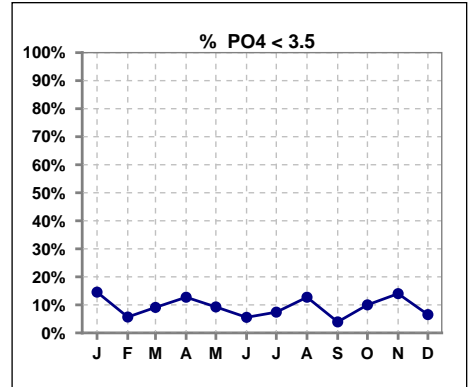
	Jan	Feb	Mar	Apr	May	Jun	Jul	Aug	Sep	Oct	Nov	Dec
# BMI	55	54	55	55	55	55	55	55	51	50	50	46
# BMI > 30	23	23	24	23	20	20	21	24	22	22	21	20
Pop. Mean	30	30	32	32	32	32	32	31	31	31	31	31
Std. Deviation	8.6	8.5	13.7	13.7	13.8	13.9	14.1	9.0	9.1	9.0	9.0	9.1
% BMI > 30	42%	43%	44%	42%	38%	38%	40%	44%	43%	44%	42%	43%



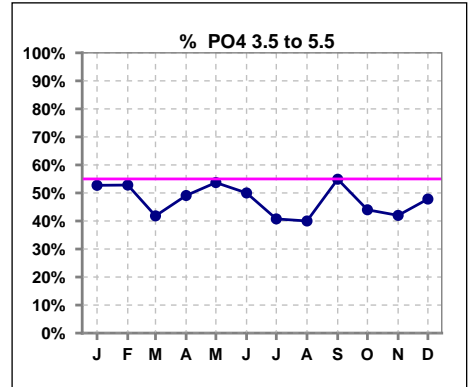
Lab methodology for PTH changed January 2012

**III. OSTEODYSTROPHY**

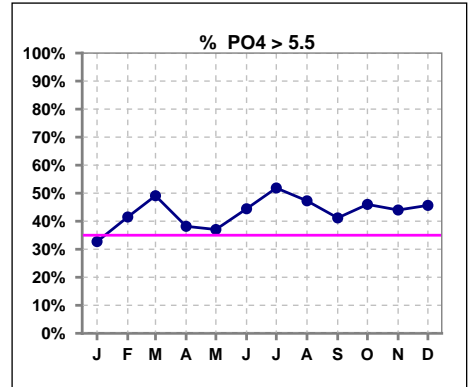
	Jan	Feb	Mar	Apr	May	Jun	Jul	Aug	Sep	Oct	Nov	Dec
# PO4	55	53	55	55	54	54	54	55	51	50	50	46
# PO4 < 3.5	8	3	5	7	5	3	4	7	2	5	7	3
Pop. Mean	5.2	5.2	5.4	5.1	5.3	5.5	5.7	5.5	5.6	5.5	5.7	5.6
Std. Deviation	1.67	1.38	1.47	1.45	1.49	1.58	1.61	1.72	1.78	1.88	3.43	1.56
<b>% PO4 &lt; 3.5</b>	<b>15%</b>	<b>6%</b>	<b>9%</b>	<b>13%</b>	<b>9%</b>	<b>6%</b>	<b>7%</b>	<b>13%</b>	<b>4%</b>	<b>10%</b>	<b>14%</b>	<b>7%</b>



	Jan	Feb	Mar	Apr	May	Jun	Jul	Aug	Sep	Oct	Nov	Dec
# PO4	55	53	55	55	54	54	54	55	51	50	50	46
# PO4 3.5 to 5.5	29	28	23	27	29	27	22	22	28	22	21	22
Pop. Mean	5.2	5.2	5.4	5.1	5.3	5.5	5.7	5.5	5.6	5.5	5.7	5.6
Std. Deviation	1.67	1.38	1.47	1.45	1.49	1.58	1.61	1.72	1.78	1.88	3.43	1.56
<b>% PO4 3.5 to 5.5</b>	<b>53%</b>	<b>53%</b>	<b>42%</b>	<b>49%</b>	<b>54%</b>	<b>50%</b>	<b>41%</b>	<b>40%</b>	<b>55%</b>	<b>44%</b>	<b>42%</b>	<b>48%</b>



	Jan	Feb	Mar	Apr	May	Jun	Jul	Aug	Sep	Oct	Nov	Dec
# PO4	55	53	55	55	54	54	54	55	51	50	50	46
# PO4 > 5.5	18	22	27	21	20	24	28	26	21	23	22	21
Pop. Mean	5.2	5.2	5.4	5.1	5.3	5.5	5.7	5.5	5.6	5.5	5.7	5.6
Std. Deviation	1.67	1.38	1.47	1.45	1.49	1.58	1.61	1.72	1.78	1.88	3.43	1.56
<b>% PO4 &gt; 5.5</b>	<b>33%</b>	<b>42%</b>	<b>49%</b>	<b>38%</b>	<b>37%</b>	<b>44%</b>	<b>52%</b>	<b>47%</b>	<b>41%</b>	<b>46%</b>	<b>44%</b>	<b>46%</b>

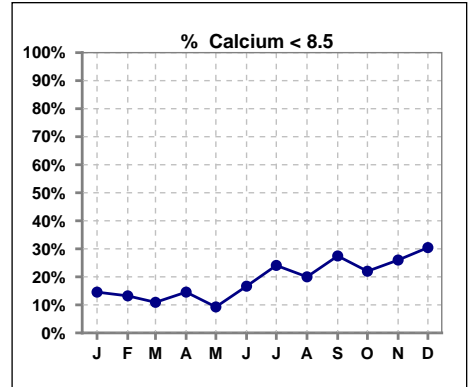


Methodology: a) All labs for 'Adequacy of Dialysis', 'Nutrition', 'Osteodystrophy' and 'Anemia' based on last value of month; b) Access data takes last access of month; c) Values for 'Infection Control' uses most recent result.

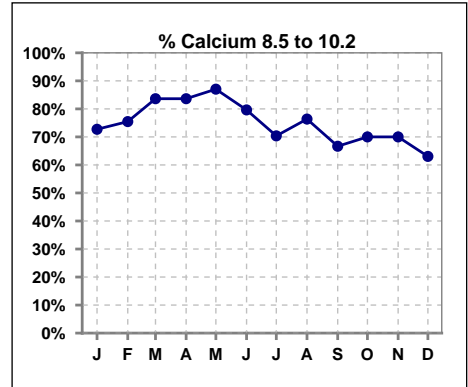
Lab methodology for PTH changed January 2012

**III. OSTEODYSTROPHY - CONT.**

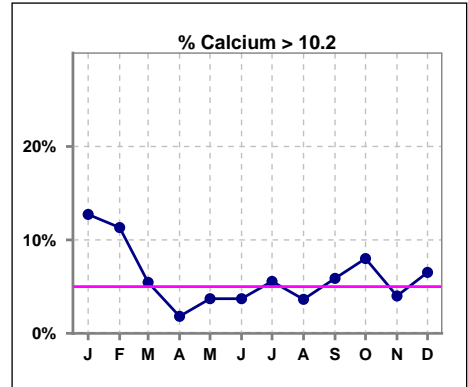
	Jan	Feb	Mar	Apr	May	Jun	Jul	Aug	Sep	Oct	Nov	Dec
# Calcium	55	53	55	55	54	54	54	55	51	50	50	46
# Calcium < 8.5	8	7	6	8	5	9	13	11	14	11	13	14
Pop. Mean	9.3	9.4	9.2	9.2	9.2	9.1	9.1	9.1	9.0	9.1	8.9	9.0
Std. Deviation	0.81	0.81	0.70	0.82	0.66	0.74	0.88	0.73	0.87	0.90	0.84	0.95
<b>% Calcium &lt; 8.5</b>	<b>15%</b>	<b>13%</b>	<b>11%</b>	<b>15%</b>	<b>9%</b>	<b>17%</b>	<b>24%</b>	<b>20%</b>	<b>27%</b>	<b>22%</b>	<b>26%</b>	<b>30%</b>



	Jan	Feb	Mar	Apr	May	Jun	Jul	Aug	Sep	Oct	Nov	Dec
# Calcium	55	53	55	55	54	54	54	55	51	50	50	46
# Calcium 8.5 to 10.2	40	40	46	46	47	43	38	42	34	35	35	29
Pop. Mean	9.3	9.4	9.2	9.2	9.2	9.1	9.1	9.1	9.0	9.1	8.9	9.0
Std. Deviation	0.81	0.81	0.70	0.82	0.66	0.74	0.88	0.73	0.87	0.90	0.84	0.95
<b>% Calcium 8.5 to 10.2</b>	<b>73%</b>	<b>75%</b>	<b>84%</b>	<b>84%</b>	<b>87%</b>	<b>80%</b>	<b>70%</b>	<b>76%</b>	<b>67%</b>	<b>70%</b>	<b>70%</b>	<b>63%</b>



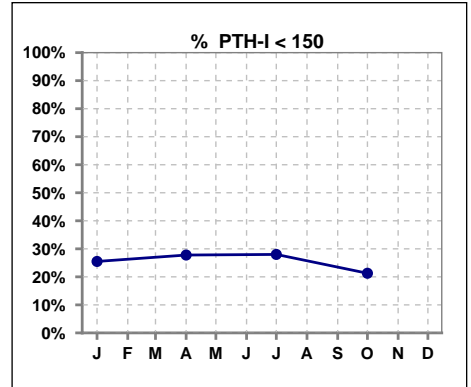
	Jan	Feb	Mar	Apr	May	Jun	Jul	Aug	Sep	Oct	Nov	Dec
# Calcium	55	53	55	55	54	54	54	55	51	50	50	46
# Calcium > 10.2	7	6	3	1	2	2	3	2	3	4	2	3
Pop. Mean	9.3	9.4	9.2	9.2	9.2	9.1	9.1	9.1	9.0	9.1	8.9	9.0
Std. Deviation	0.81	0.81	0.70	0.82	0.66	0.74	0.88	0.73	0.87	0.90	0.84	0.95
<b>% Calcium &gt; 10.2</b>	<b>13%</b>	<b>11%</b>	<b>5%</b>	<b>2%</b>	<b>4%</b>	<b>4%</b>	<b>6%</b>	<b>4%</b>	<b>6%</b>	<b>8%</b>	<b>4%</b>	<b>7%</b>



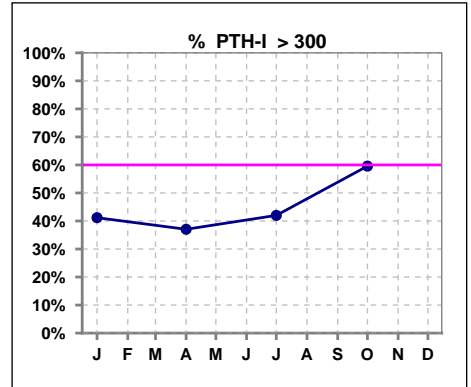
Lab methodology for PTH changed January 2012

**III. OSTEODYSTROPHY - CONT.**

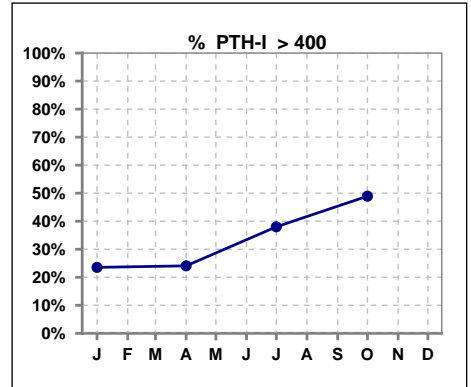
	Jan	Feb	Mar	Apr	May	Jun	Jul	Aug	Sep	Oct	Nov	Dec
# PTH-I	51			54			50			47		
# PTH-I < 150	13			15			14			10		
Pop. Mean	332			324			398			410		
Std. Deviation	274			271			387			286		
<b>% PTH-I &lt; 150</b>	<b>25%</b>			<b>28%</b>			<b>28%</b>			<b>21%</b>		



	Jan	Feb	Mar	Apr	May	Jun	Jul	Aug	Sep	Oct	Nov	Dec
# PTH-I	51			54			50			47		
# PTH-I > 300	21			20			21			28		
Pop. Mean	332			324			398			410		
Std. Deviation	274			271			387			286		
<b>% PTH-I &gt; 300</b>	<b>41%</b>			<b>37%</b>			<b>42%</b>			<b>60%</b>		



	Jan	Feb	Mar	Apr	May	Jun	Jul	Aug	Sep	Oct	Nov	Dec
# PTH-I	51			54			50			47		
# PTH-I > 400	12			54			50			47		
Pop. Mean	332			324			398			410		
Std. Deviation	274			271			387			286		
<b>% PTH-I &gt; 400</b>	<b>24%</b>			<b>24%</b>			<b>38%</b>			<b>49%</b>		

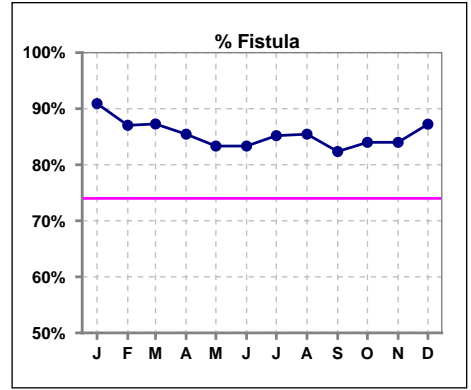


Methodology: a) All labs for 'Adequacy of Dialysis', 'Nutrition', 'Osteodystrophy' and 'Anemia' based on last value of month; b) Access data takes last access of month; c) Values for 'Infection Control' uses most recent result.

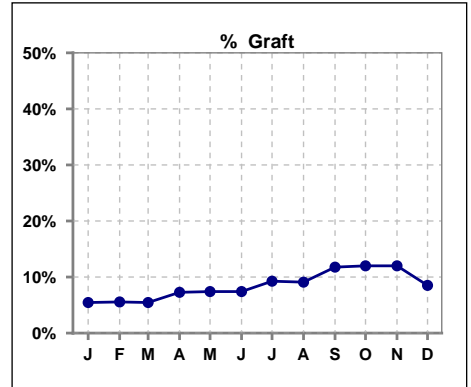
**Northwest Kidney Centers - Home Hemodialysis**  
**Quality Assurance Reports**  
 Through period ending Dec. 31, 2013

**IV. ACCESS**

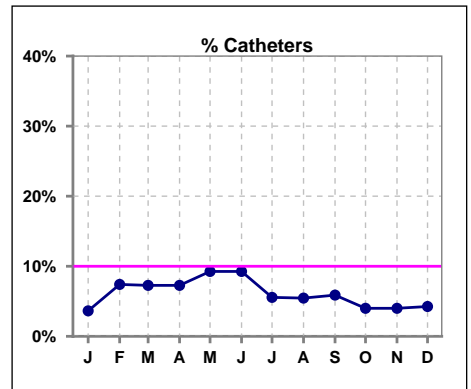
	Jan	Feb	Mar	Apr	May	Jun	Jul	Aug	Sep	Oct	Nov	Dec
<b># Access</b>	55	54	55	55	54	54	54	55	51	50	50	47
<b># Fistula</b>	50	47	48	47	45	45	46	47	42	42	42	41
<b>% Fistula</b>	91%	87%	87%	85%	83%	83%	85%	85%	82%	84%	84%	87%



	Jan	Feb	Mar	Apr	May	Jun	Jul	Aug	Sep	Oct	Nov	Dec
<b># Access</b>	55	54	55	55	54	54	54	55	51	50	50	47
<b># Graft</b>	3	3	3	4	4	4	5	5	6	6	6	4
<b>% Graft</b>	5%	6%	5%	7%	7%	7%	9%	9%	12%	12%	12%	9%



	Jan	Feb	Mar	Apr	May	Jun	Jul	Aug	Sep	Oct	Nov	Dec
<b># Access</b>	55	54	55	55	54	54	54	55	51	50	50	47
<b># Catheters</b>	2	4	4	4	5	5	3	3	3	2	2	2
<b>% Catheters</b>	4%	7%	7%	7%	9%	9%	6%	5%	6%	4%	4%	4%



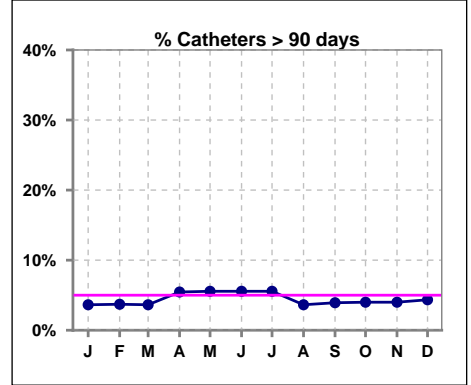
Methodology: a) All labs for 'Adequacy of Dialysis', 'Nutrition', 'Osteodystrophy' and 'Anemia' based on last value of month; b) Access data takes last access of month; c) Values for 'Infection Control' uses most recent result.

**IV. ACCESS - CONT.**

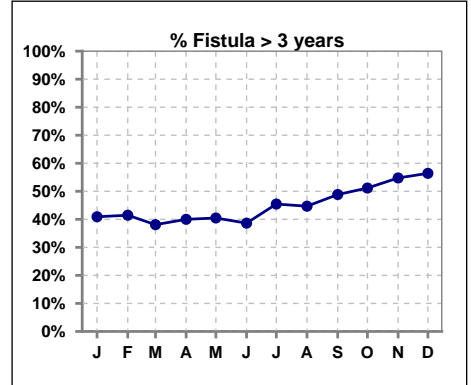
**Catheters > 90 days**

	Jan	Feb	Mar	Apr	May	Jun	Jul	Aug	Sep	Oct	Nov	Dec
<b># Access</b>	55	54	55	55	54	54	54	55	51	50	50	46
<b># Catheters</b>	2	2	2	3	3	3	3	2	2	2	2	2
<b>% Catheters</b>	4%	4%	4%	5%	6%	6%	6%	4%	4%	4%	4%	4%

**Definition:** Catheter in use on last treatment of the month



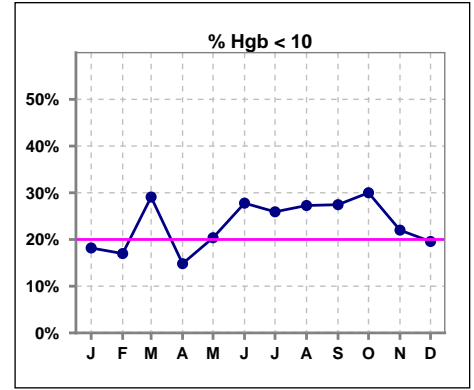
	Jan	Feb	Mar	Apr	May	Jun	Jul	Aug	Sep	Oct	Nov	Dec
<b># Fistula</b>	44	41	42	40	42	44	44	47	43	43	42	39
<b># Fistula &gt; 3 yrs</b>	18	17	16	16	17	17	20	21	21	22	23	22
<b>% Fistula &gt; 3 yrs</b>	41%	41%	38%	40%	40%	39%	45%	45%	49%	51%	55%	56%



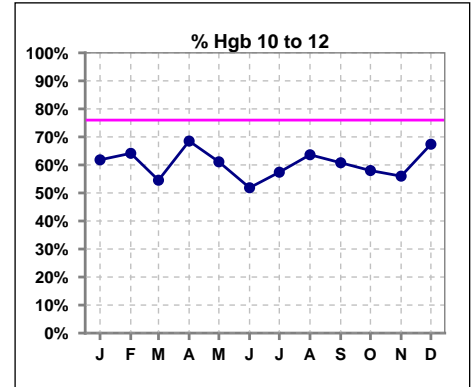


**V. ANEMIA**

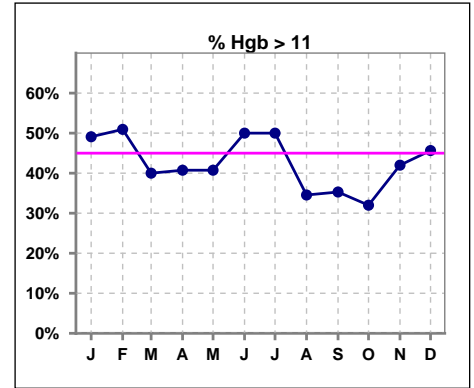
	Jan	Feb	Mar	Apr	May	Jun	Jul	Aug	Sep	Oct	Nov	Dec
# Hgb	55	53	55	54	54	54	54	55	51	50	50	46
# Hgb < 10	10	9	16	8	11	15	14	15	14	15	11	9
Pop. Mean	11.0	11.1	10.7	10.9	10.9	10.8	10.7	10.6	10.6	10.6	10.8	10.9
Std. Deviation	1.4	1.5	1.4	1.3	1.3	1.4	1.5	1.3	1.3	1.3	1.4	1.2
% Hgb < 10	18%	17%	29%	15%	20%	28%	26%	27%	27%	30%	22%	20%



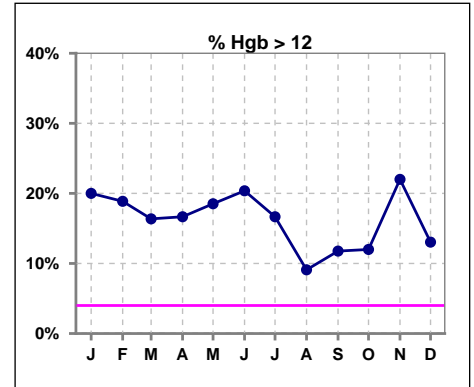
	Jan	Feb	Mar	Apr	May	Jun	Jul	Aug	Sep	Oct	Nov	Dec
# Hgb	55	53	55	54	54	54	54	55	51	50	50	46
# Hgb 10 to 12	34	34	30	37	33	28	31	35	31	29	28	31
Pop. Mean	11.0	11.1	10.7	10.9	10.9	10.8	10.7	10.6	10.6	10.6	10.8	10.9
Std. Deviation	1.4	1.5	1.4	1.3	1.3	1.4	1.5	1.3	1.3	1.3	1.4	1.2
% Hgb 10 to 12	62%	64%	55%	69%	61%	52%	57%	64%	61%	58%	56%	67%



	Jan	Feb	Mar	Apr	May	Jun	Jul	Aug	Sep	Oct	Nov	Dec
# Hgb	55	53	55	54	54	54	54	55	51	50	50	46
# Hgb > 11	27	27	22	22	22	27	27	19	18	16	21	21
Pop. Mean	11.0	11.1	10.7	10.9	10.9	10.8	10.7	10.6	10.6	10.6	10.8	10.9
Std. Deviation	1.4	1.5	1.4	1.3	1.3	1.4	1.5	1.3	1.3	1.3	1.4	1.2
% Hgb > 11	49%	51%	40%	41%	41%	50%	50%	35%	35%	32%	42%	46%



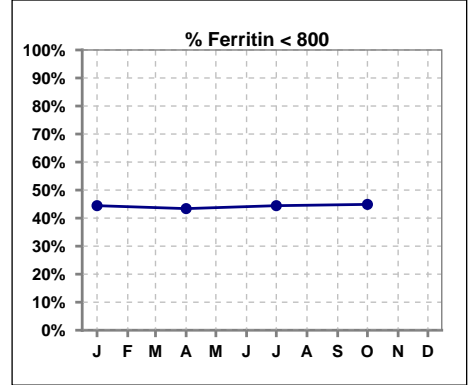
	Jan	Feb	Mar	Apr	May	Jun	Jul	Aug	Sep	Oct	Nov	Dec
# Hgb	55	53	55	54	54	54	54	55	51	50	50	46
# Hgb > 12	11	10	9	9	10	11	9	5	6	6	11	6
Pop. Mean	11.0	11.1	10.7	10.9	10.9	10.8	10.7	10.6	10.6	10.6	10.8	10.9
Std. Deviation	1.4	1.5	1.4	1.3	1.3	1.4	1.5	1.3	1.3	1.3	1.4	1.2
% Hgb > 12	20%	19%	16%	17%	19%	20%	17%	9%	12%	12%	22%	13%



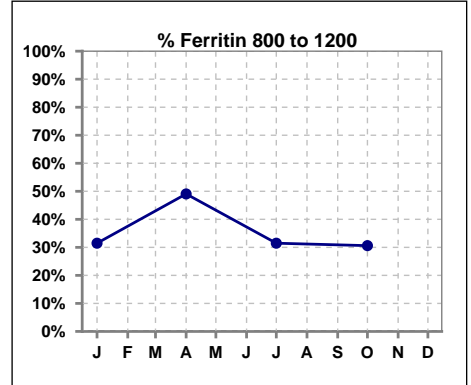
**V. ANEMIA - CONT.**

**Iron Profile**

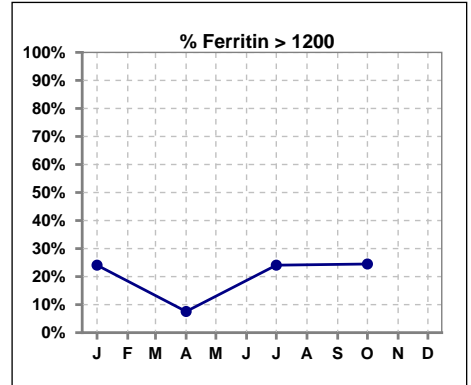
	Jan	Feb	Mar	Apr	May	Jun	Jul	Aug	Sep	Oct	Nov	Dec
# Ferritin	54			53			54			49		
# Ferritin < 800	24			23			24			22		
Pop. Mean	831			736			834			845		
Std. Deviation	453			405			479			490		
<b>% Ferritin &lt; 800</b>	<b>44%</b>			<b>43%</b>			<b>44%</b>			<b>45%</b>		



	Jan	Feb	Mar	Apr	May	Jun	Jul	Aug	Sep	Oct	Nov	Dec
# Ferritin	54			53			54			49		
# Ferritin 800 to 1200	17			26			17			15		
Pop. Mean	831			736			834			845		
Std. Deviation	453			405			479			490		
<b>% Ferritin 800 to 1200</b>	<b>31%</b>			<b>49%</b>			<b>31%</b>			<b>31%</b>		

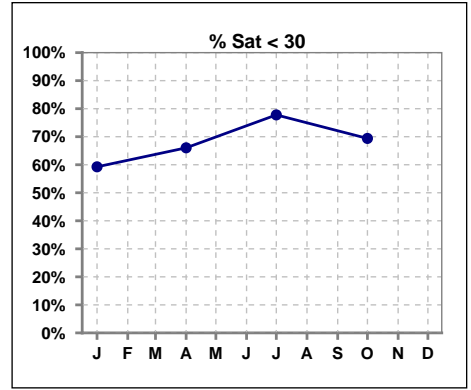


	Jan	Feb	Mar	Apr	May	Jun	Jul	Aug	Sep	Oct	Nov	Dec
# Ferritin	54			53			54			49		
# Ferritin > 1200	13			4			13			12		
Pop. Mean	831			736			834			845		
Std. Deviation	453			405			479			490		
<b>% Ferritin &gt; 1200</b>	<b>24%</b>			<b>8%</b>			<b>24%</b>			<b>24%</b>		

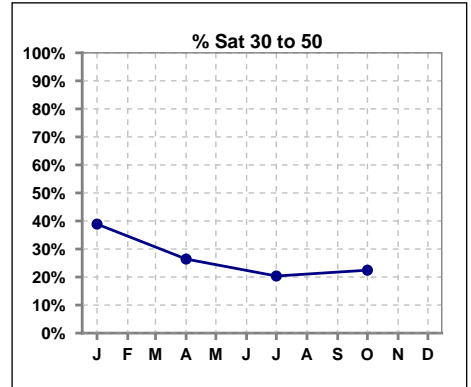


**V. ANEMIA - CONT.**

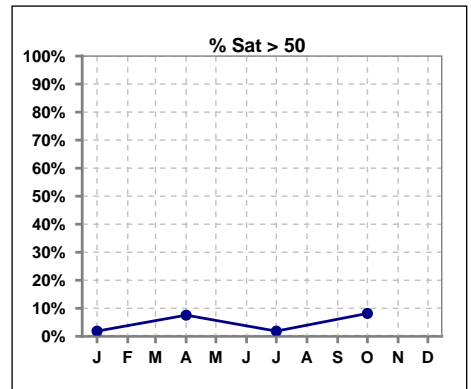
	Jan	Feb	Mar	Apr	May	Jun	Jul	Aug	Sep	Oct	Nov	Dec
# % Sat	54			53			54			49		
# % Sat < 30	32			35			42			34		
Pop. Mean	28			27			25			28		
Std. Deviation	10			15			10			17		
<b>% % Sat &lt; 30</b>	<b>59%</b>			<b>66%</b>			<b>78%</b>			<b>69%</b>		



	Jan	Feb	Mar	Apr	May	Jun	Jul	Aug	Sep	Oct	Nov	Dec
# % Sat	54			53			54			49		
# % Sat 30 to 50	21			14			11			11		
Pop. Mean	28			27			25			28		
Std. Deviation	10			15			10			17		
<b>% % Sat 30 to 50</b>	<b>39%</b>			<b>26%</b>			<b>20%</b>			<b>22%</b>		

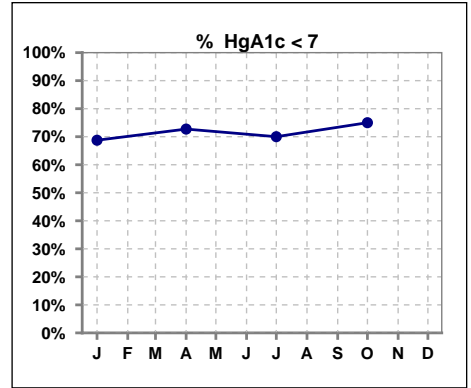


	Jan	Feb	Mar	Apr	May	Jun	Jul	Aug	Sep	Oct	Nov	Dec
# % Sat	54			53			54			49		
# % Sat > 50	1			4			1			4		
Pop. Mean	28			27			25			28		
Std. Deviation	10			15			10			17		
<b>% % Sat &gt; 50</b>	<b>2%</b>			<b>8%</b>			<b>2%</b>			<b>8%</b>		



**VI. Diabetes**

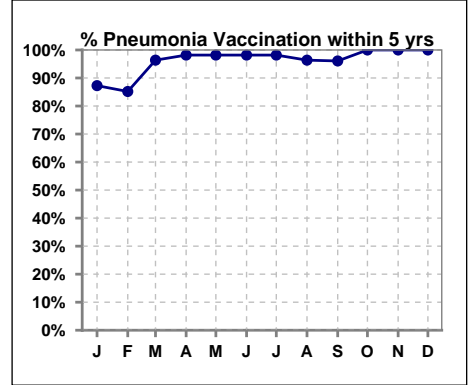
	Jan	Feb	Mar	Apr	May	Jun	Jul	Aug	Sep	Oct	Nov	Dec
# HgA1c	16			22			20			20		
# HgA1c < 7	11			16			14			15		
Pop. Mean	6.3			6.5			6.5			6.6		
Std. Deviation	1.03			1.18			1.28			1.06		
<b>% HgA1c &lt; 7</b>	<b>69%</b>			<b>73%</b>			<b>70%</b>			<b>75%</b>		



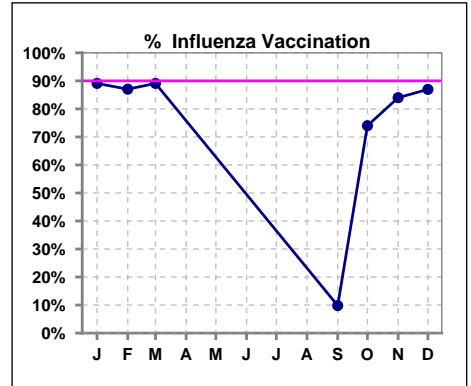
**VII. Infection Control**

**Pneumonia vaccination within the past five years**

	Jan	Feb	Mar	Apr	May	Jun	Jul	Aug	Sep	Oct	Nov	Dec
<b># Patient</b>	55	54	55	55	55	55	55	55	51	50	50	46
<b># Pneumonia</b>	48	46	53	54	54	54	54	53	49	50	50	46
<b>% Pneumonia</b>	87%	85%	96%	98%	98%	98%	98%	96%	96%	100%	100%	100%



	Jan	Feb	Mar	Apr	May	Jun	Jul	Aug	Sep	Oct	Nov	Dec
<b># Patient</b>	55	54	55						51	50	50	46
<b># Influenza</b>	49	47	49						5	37	42	40
<b>% Influenza</b>	89%	87%	89%						10%	74%	84%	87%



Methodology: a) All labs for 'Adequacy of Dialysis', 'Nutrition', 'Osteodystrophy' and 'Anemia' based on last value of month; b) Access data takes last access of month; c) Values for 'Infection Control' uses most recent result.