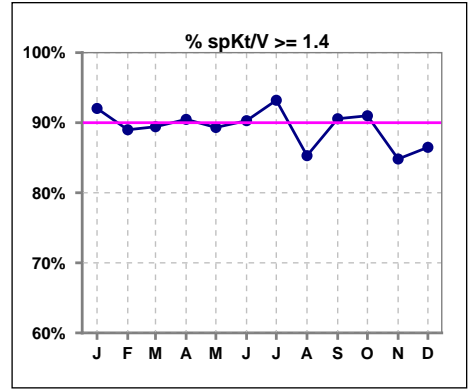
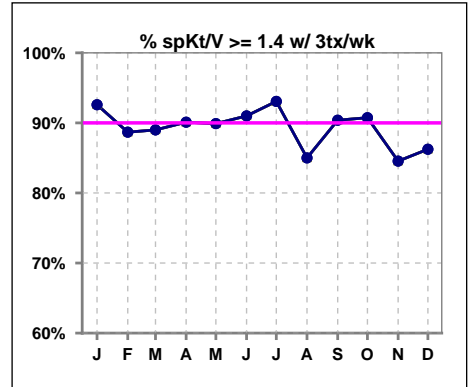


I. ADEQUACY OF DIALYSIS

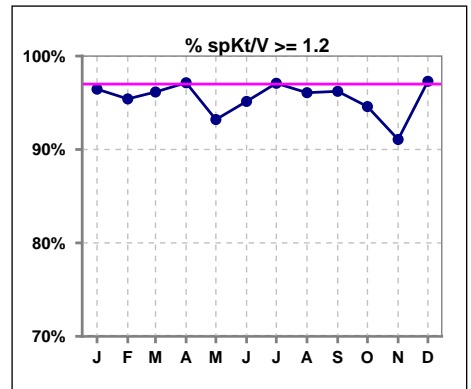
	Jan	Feb	Mar	Apr	May	Jun	Jul	Aug	Sep	Oct	Nov	Dec
# spKt/V	113	109	104	105	103	103	103	102	106	111	112	111
# spKt/V >= 1.4	104	97	93	95	92	93	96	87	96	101	95	96
Pop. Mean	1.69	1.71	1.67	1.69	1.64	1.67	1.73	1.71	1.72	1.70	1.64	1.69
Std. Deviation	0.28	0.30	0.29	0.28	0.27	0.32	0.29	0.35	0.32	0.31	0.32	0.31
% spKt/V >= 1.4	92%	89%	89%	90%	89%	90%	93%	85%	91%	91%	85%	86%



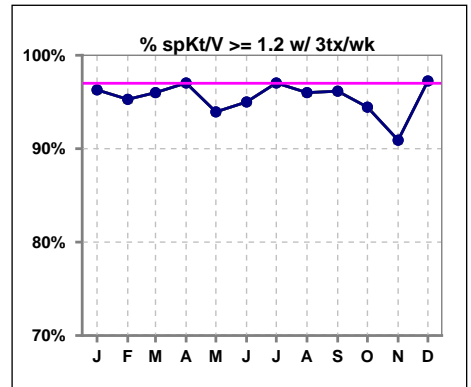
	Jan	Feb	Mar	Apr	May	Jun	Jul	Aug	Sep	Oct	Nov	Dec
# spKt/V w/ 3tx/wk	108	106	100	101	99	100	101	100	104	108	110	109
# spKt/V >= 1.4 w/3tx/wk	100	94	89	91	89	91	94	85	94	98	93	94
Pop. Mean	1.70	1.71	1.68	1.69	1.65	1.68	1.73	1.71	1.72	1.70	1.64	1.68
Std. Deviation	0.28	0.30	0.29	0.28	0.27	0.32	0.29	0.35	0.32	0.31	0.32	0.31
% >= 1.4 w/3tx/wk	93%	89%	89%	90%	90%	91%	93%	85%	90%	91%	85%	86%



	Jan	Feb	Mar	Apr	May	Jun	Jul	Aug	Sep	Oct	Nov	Dec
# spKt/V	113	109	104	105	103	103	103	102	106	111	112	111
# spKt/V >= 1.2	109	104	100	102	96	98	100	98	102	105	102	108
Pop. Mean	1.69	1.71	1.67	1.69	1.64	1.67	1.73	1.71	1.72	1.70	1.64	1.69
Std. Deviation	0.28	0.30	0.29	0.28	0.27	0.32	0.29	0.35	0.32	0.31	0.32	0.31
% spKt/V >= 1.2	96%	95%	96%	97%	93%	95%	97%	96%	96%	95%	91%	97%



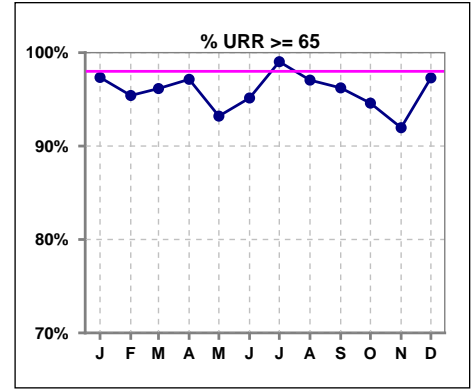
	Jan	Feb	Mar	Apr	May	Jun	Jul	Aug	Sep	Oct	Nov	Dec
# spKt/V w/ 3tx/wk	108	106	100	101	99	100	101	100	104	108	110	109
# spKt/V >= 1.2 w/3tx/wk	104	101	96	98	93	95	98	96	100	102	100	106
Pop. Mean	1.70	1.71	1.68	1.69	1.65	1.68	1.73	1.71	1.72	1.70	1.64	1.68
Std. Deviation	0.28	0.30	0.29	0.28	0.27	0.32	0.29	0.35	0.32	0.31	0.32	0.31
% >= 1.2 w/3tx/wk	96%	95%	96%	97%	94%	95%	97%	96%	96%	94%	91%	97%



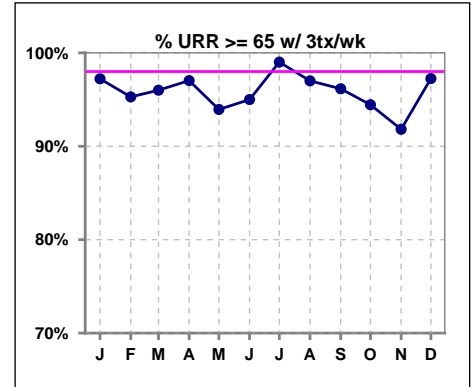
Methodology: a) All labs for 'Adequacy of Dialysis', 'Nutrition', 'Osteodystrophy', 'Anemia' and 'Diabetes' based on last value of month; b) BP's and #L processed are average of all values for month; c) Access data takes last access of month; d) Values for SGA and 'Infection Control' use most recent result.

I. ADEQUACY OF DIALYSIS - CONT.

	Jan	Feb	Mar	Apr	May	Jun	Jul	Aug	Sep	Oct	Nov	Dec
# URR	113	109	104	105	103	103	103	102	106	111	112	111
# URR >= 65	110	104	100	102	96	98	102	99	102	105	103	108
Pop. Mean	77	77	76	76	75	76	77	76	77	76	75	76
Std. Deviation	5.75	6.02	6.20	6.01	6.16	7.31	5.13	5.40	6.34	6.48	7.63	6.36
% URR >= 65	97%	95%	96%	97%	93%	95%	99%	97%	96%	95%	92%	97%



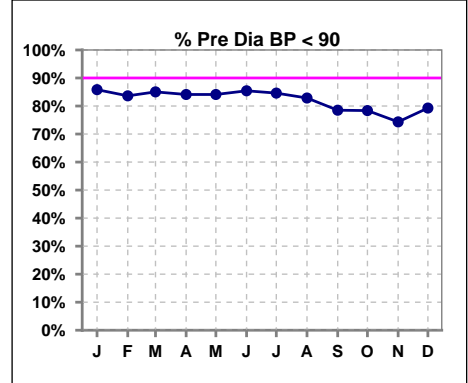
	Jan	Feb	Mar	Apr	May	Jun	Jul	Aug	Sep	Oct	Nov	Dec
# URR w/ 3tx/wk	108	106	100	101	99	100	101	100	104	108	110	109
# URR>=65 w/ 3tx/wk	105	101	96	98	93	95	100	97	100	102	101	106
Pop. Mean	77	77	76	76	75	76	77	76	77	76	75	76
Std. Deviation	5.81	6.09	6.32	6.10	6.12	7.38	5.16	5.43	6.38	6.54	7.68	6.40
% URR>=65 w/ 3tx/wk	97%	95%	96%	97%	94%	95%	99%	97%	96%	94%	92%	97%



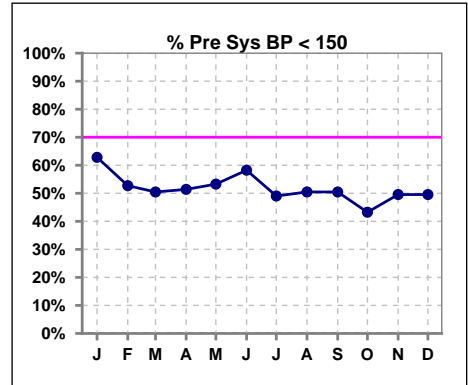
I. ADEQUACY OF DIALYSIS - CONT.

Blood Pressure Control (Pre)

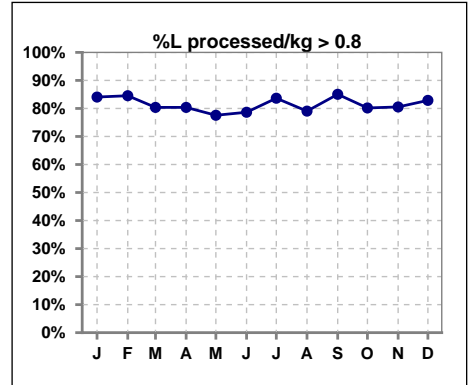
	Jan	Feb	Mar	Apr	May	Jun	Jul	Aug	Sep	Oct	Nov	Dec
# Pre Dia BP	113	110	107	107	107	103	104	105	107	111	113	111
# Pre Dia BP < 90	97	92	91	90	90	88	88	87	84	87	84	88
Pop. Mean	74	75	75	76	75	75	76	75	76	77	77	77
Std. Deviation	14.5	14.7	15.1	14.5	14.9	15.3	14.4	14.9	16.2	15.8	17.0	16.5
% Pre Dia BP < 90	86%	84%	85%	84%	84%	85%	85%	83%	79%	78%	74%	79%



	Jan	Feb	Mar	Apr	May	Jun	Jul	Aug	Sep	Oct	Nov	Dec
# Pre Sys BP	113	110	107	107	107	103	104	105	107	111	113	111
# Pre Sys BP < 150	71	58	54	55	57	60	51	53	54	48	56	55
Pop. Mean	144	147	148	149	148	146	149	146	148	150	150	150
Std. Deviation	22.6	22.8	24.7	23.9	23.0	23.4	22.4	22.4	23.0	22.4	24.1	24.8
%Pre Sys BP <150	63%	53%	50%	51%	53%	58%	49%	50%	50%	43%	50%	50%



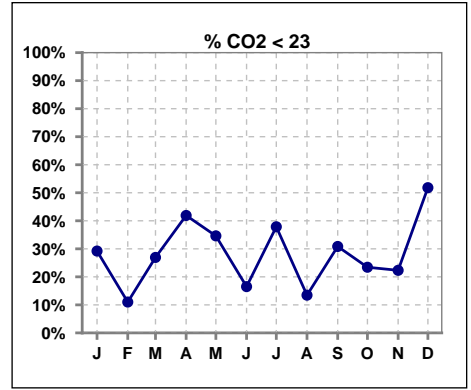
	Jan	Feb	Mar	Apr	May	Jun	Jul	Aug	Sep	Oct	Nov	Dec
# L processed/kg	113	110	107	107	107	103	104	105	107	111	113	111
# L processed/kg>0.8	95	93	86	86	83	81	87	83	91	89	91	92
Pop. Mean	1	1	1	1	1	1	1	1	1	1	1	1
Std. Deviation	0.2	0.2	0.3	0.2	0.3	0.3	0.3	0.3	0.3	0.3	0.3	0.3
% L processed/kg>0.8	84%	85%	80%	80%	78%	79%	84%	79%	85%	80%	81%	83%



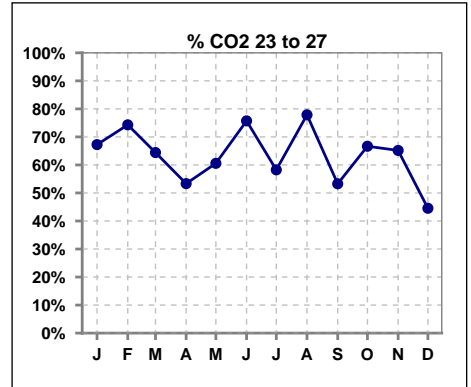
Methodology: a) All labs for 'Adequacy of Dialysis', 'Nutrition', 'Osteodystrophy', 'Anemia' and 'Diabetes' based on last value of month; b) BP's and #L processed are average of all values for month; c) Access data takes last access of month; d) Values for SGA and 'Infection Control' use most recent result.

I. ADEQUACY OF DIALYSIS - CONT.

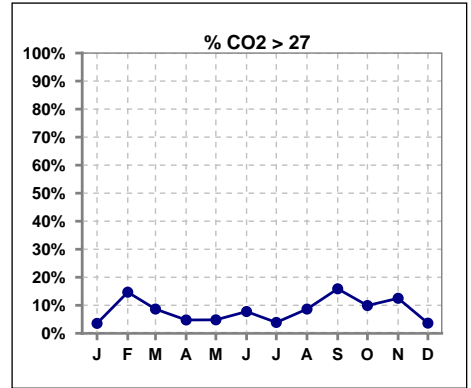
	Jan	Feb	Mar	Apr	May	Jun	Jul	Aug	Sep	Oct	Nov	Dec
# CO2	113	109	104	105	104	103	103	104	107	111	112	110
# CO2 < 23	33	12	28	44	36	17	39	14	33	26	25	57
Pop. Mean	24	25	24	23	23	24	23	25	24	24	24	22
Std. Deviation	2.51	2.27	2.59	2.72	2.59	2.52	2.53	2.29	2.79	2.58	2.86	2.77
% CO2 < 23	29%	11%	27%	42%	35%	17%	38%	13%	31%	23%	22%	52%



	Jan	Feb	Mar	Apr	May	Jun	Jul	Aug	Sep	Oct	Nov	Dec
# CO2	113	109	104	105	104	103	103	104	107	111	112	110
# CO2 23 to 27	76	81	67	56	63	78	60	81	57	74	73	49
Pop. Mean	24	25	24	23	23	24	23	25	24	24	24	22
Std. Deviation	2.51	2.27	2.59	2.72	2.59	2.52	2.53	2.29	2.79	2.58	2.86	2.77
% CO2 23 to 27	67%	74%	64%	53%	61%	76%	58%	78%	53%	67%	65%	45%



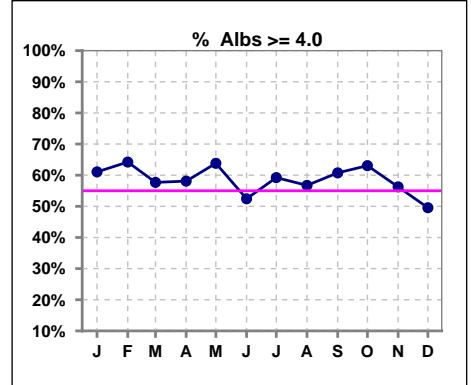
	Jan	Feb	Mar	Apr	May	Jun	Jul	Aug	Sep	Oct	Nov	Dec
# CO2	113	109	104	105	104	103	103	104	107	111	112	110
# CO2 > 27	4	16	9	5	5	8	4	9	17	11	14	4
Pop. Mean	24	25	24	23	23	24	23	25	24	24	24	22
Std. Deviation	2.51	2.27	2.59	2.72	2.59	2.52	2.53	2.29	2.79	2.58	2.86	2.77
% CO2 > 27	4%	15%	9%	5%	5%	8%	4%	9%	16%	10%	13%	4%



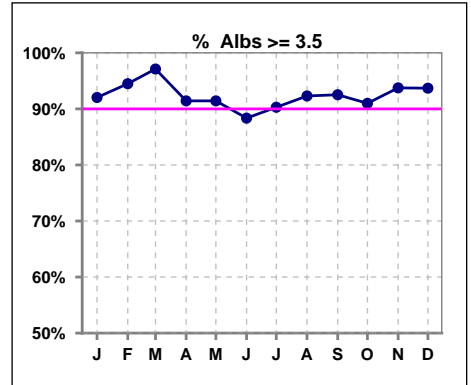
*Albumin values use BCG method - as of July 2001

II. NUTRITION

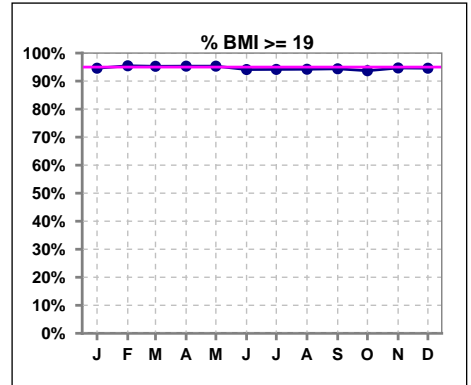
	Jan	Feb	Mar	Apr	May	Jun	Jul	Aug	Sep	Oct	Nov	Dec
# Albumin	113	109	104	105	105	103	103	104	107	111	112	111
# Albumin >= 4.0	69	70	60	61	67	54	61	59	65	70	63	55
Pop. Mean	4.0	4.0	4.0	4.0	4.0	3.9	3.9	4.0	4.0	4.0	4.0	3.9
Std. Deviation	0.32	0.33	0.33	0.42	0.40	0.43	0.38	0.38	0.37	0.36	0.35	0.40
% Alb >= 4.0	61%	64%	58%	58%	64%	52%	59%	57%	61%	63%	56%	50%



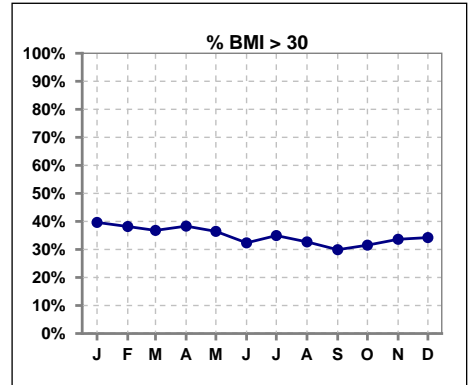
	Jan	Feb	Mar	Apr	May	Jun	Jul	Aug	Sep	Oct	Nov	Dec
# Albumin	113	109	104	105	105	103	103	104	107	111	112	111
# Albumin >= 3.5	104	103	101	96	96	91	93	96	99	101	105	104
Pop. Mean	4.0	4.0	4.0	4.0	4.0	3.9	3.9	4.0	4.0	4.0	4.0	3.9
Std. Deviation	0.32	0.33	0.33	0.42	0.40	0.43	0.38	0.38	0.37	0.36	0.35	0.40
% Alb >= 3.5	92%	94%	97%	91%	91%	88%	90%	92%	93%	91%	94%	94%



	Jan	Feb	Mar	Apr	May	Jun	Jul	Aug	Sep	Oct	Nov	Dec
# BMI	111	110	107	108	109	107	106	105	108	114	117	114
# BMI >= 19	105	105	101	102	102	96	97	98	101	104	107	105
Pop. Mean	29	29	29	29	29	29	28	28	28	28	29	29
Std. Deviation	7.8	7.6	7.3	7.4	7.2	7.3	7.2	7.5	7.4	7.4	7.6	7.6
% BMI >= 19	95%	95%	95%	95%	95%	94%	94%	94%	94%	94%	95%	95%



	Jan	Feb	Mar	Apr	May	Jun	Jul	Aug	Sep	Oct	Nov	Dec
# BMI	111	110	107	108	109	107	106	105	108	114	117	114
# BMI > 30	44	42	39	41	39	33	36	34	32	35	38	38
Pop. Mean	29	29	29	29	29	29	28	28	28	28	29	29
Std. Deviation	7.8	7.6	7.3	7.4	7.2	7.3	7.2	7.5	7.4	7.4	7.6	7.6
% BMI > 30	40%	38%	37%	38%	36%	32%	35%	33%	30%	32%	34%	34%

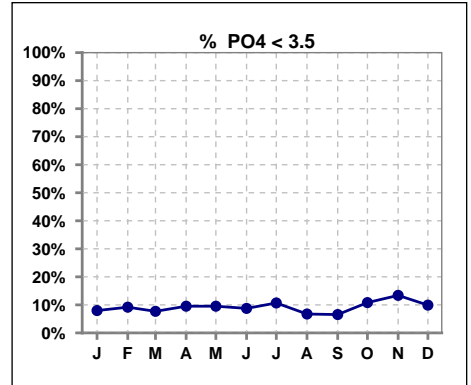


Methodology: a) All labs for 'Adequacy of Dialysis', 'Nutrition', 'Osteodystrophy', 'Anemia' and 'Diabetes' based on last value of month; b) BP's and #L processed are average of all values for month; c) Access data takes last access of month; d) Values for SGA and 'Infection Control' use most recent result.

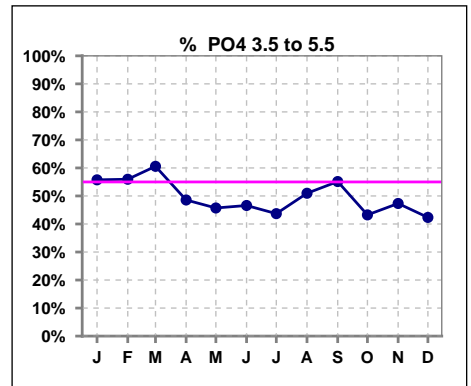
Lab methodology for PTH changed January 2012

III. OSTEODYSTROPHY

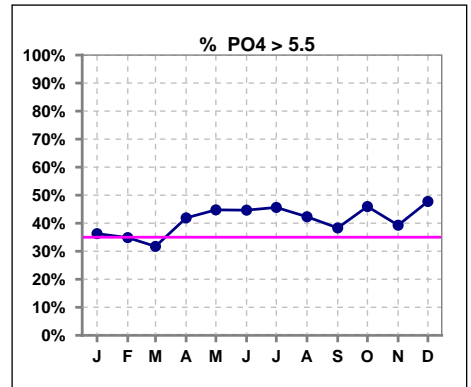
	Jan	Feb	Mar	Apr	May	Jun	Jul	Aug	Sep	Oct	Nov	Dec
# PO4	113	109	104	105	105	103	103	104	107	111	112	111
# PO4 < 3.5	9	10	8	10	10	9	11	7	7	12	15	11
Pop. Mean	5.3	5.4	5.3	5.5	5.6	5.6	5.5	5.6	5.4	5.5	5.4	5.6
Std. Deviation	1.65	1.77	1.75	1.70	1.93	1.77	1.73	1.65	1.69	1.78	1.92	1.91
% PO4 < 3.5	8%	9%	8%	10%	10%	9%	11%	7%	7%	11%	13%	10%



	Jan	Feb	Mar	Apr	May	Jun	Jul	Aug	Sep	Oct	Nov	Dec
# PO4	113	109	104	105	105	103	103	104	107	111	112	111
# PO4 3.5 to 5.5	63	61	63	51	48	48	45	53	59	48	53	47
Pop. Mean	5.3	5.4	5.3	5.5	5.6	5.6	5.5	5.6	5.4	5.5	5.4	5.6
Std. Deviation	1.65	1.77	1.75	1.70	1.93	1.77	1.73	1.65	1.69	1.78	1.92	1.91
% PO4 3.5 to 5.5	56%	56%	61%	49%	46%	47%	44%	51%	55%	43%	47%	42%



	Jan	Feb	Mar	Apr	May	Jun	Jul	Aug	Sep	Oct	Nov	Dec
# PO4	113	109	104	105	105	103	103	104	107	111	112	111
# PO4 > 5.5	41	38	33	44	47	46	47	44	41	51	44	53
Pop. Mean	5.3	5.4	5.3	5.5	5.6	5.6	5.5	5.6	5.4	5.5	5.4	5.6
Std. Deviation	1.65	1.77	1.75	1.70	1.93	1.77	1.73	1.65	1.69	1.78	1.92	1.91
% PO4 > 5.5	36%	35%	32%	42%	45%	45%	46%	42%	38%	46%	39%	48%

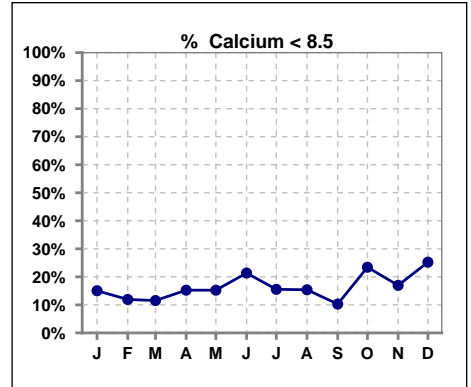


Methodology: a) All labs for 'Adequacy of Dialysis', 'Nutrition', 'Osteodystrophy', 'Anemia' and 'Diabetes' based on last value of month; b) BP's and #L processed are average of all values for month; c) Access data takes last access of month; d) Values for SGA and 'Infection Control' use most recent result.

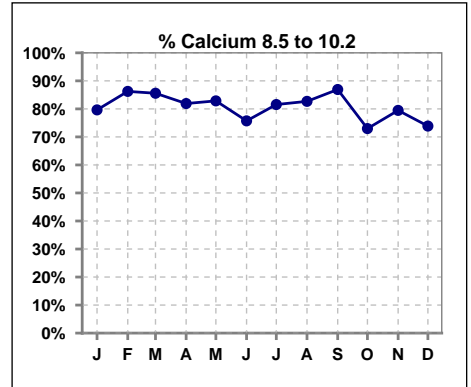
Lab methodology for PTH changed January 2012

III. OSTEODYSTROPHY - CONT.

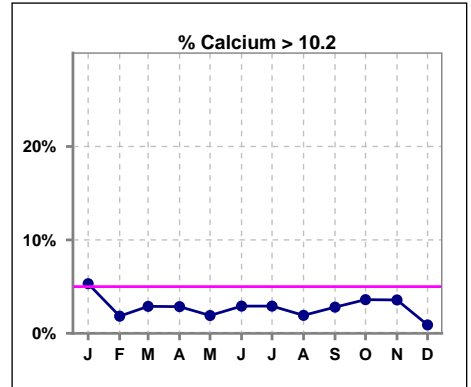
	Jan	Feb	Mar	Apr	May	Jun	Jul	Aug	Sep	Oct	Nov	Dec
# Calcium	113	109	104	105	105	103	103	104	107	111	112	111
# Calcium < 8.5	17	13	12	16	16	22	16	16	11	26	19	28
Pop. Mean	9.2	9.1	9.2	9.1	9.1	9.0	9.1	9.1	9.2	9.0	9.0	8.8
Std. Deviation	0.75	0.64	0.63	0.63	0.67	0.77	0.66	0.58	0.66	0.72	0.78	0.76
% Calcium < 8.5	15%	12%	12%	15%	15%	21%	16%	15%	10%	23%	17%	25%



	Jan	Feb	Mar	Apr	May	Jun	Jul	Aug	Sep	Oct	Nov	Dec
# Calcium	113	109	104	105	105	103	103	104	107	111	112	111
# Calcium 8.5 to 10.2	90	94	89	86	87	78	84	86	93	81	89	82
Pop. Mean	9.2	9.1	9.2	9.1	9.1	9.0	9.1	9.1	9.2	9.0	9.0	8.8
Std. Deviation	0.75	0.64	0.63	0.63	0.67	0.77	0.66	0.58	0.66	0.72	0.78	0.76
% Calcium 8.5 to 10.2	80%	86%	86%	82%	83%	76%	82%	83%	87%	73%	79%	74%



	Jan	Feb	Mar	Apr	May	Jun	Jul	Aug	Sep	Oct	Nov	Dec
# Calcium	113	109	104	105	105	103	103	104	107	111	112	111
# Calcium > 10.2	6	2	3	3	2	3	3	2	3	4	4	1
Pop. Mean	9.2	9.1	9.2	9.1	9.1	9.0	9.1	9.1	9.2	9.0	9.0	8.8
Std. Deviation	0.75	0.64	0.63	0.63	0.67	0.77	0.66	0.58	0.66	0.72	0.78	0.76
% Calcium > 10.2	5%	2%	3%	3%	2%	3%	3%	2%	3%	4%	4%	1%

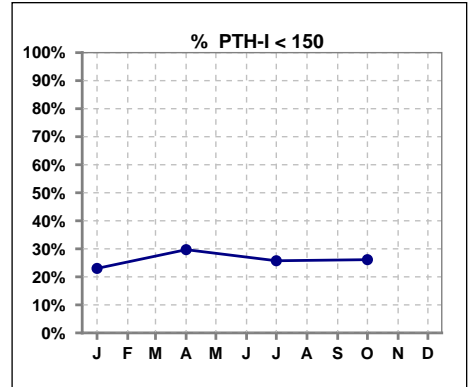


Methodology: a) All labs for 'Adequacy of Dialysis', 'Nutrition', 'Osteodystrophy', 'Anemia' and 'Diabetes' based on last value of month; b) BP's and #L processed are average of all values for month; c) Access data takes last access of month; d) Values for SGA and 'Infection Control' use most recent result.

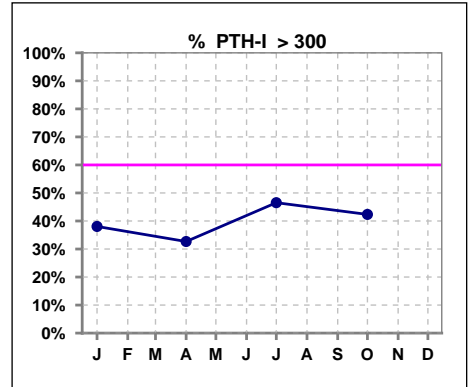
Lab methodology for PTH changed January 2012

III. OSTEODYSTROPHY - CONT.

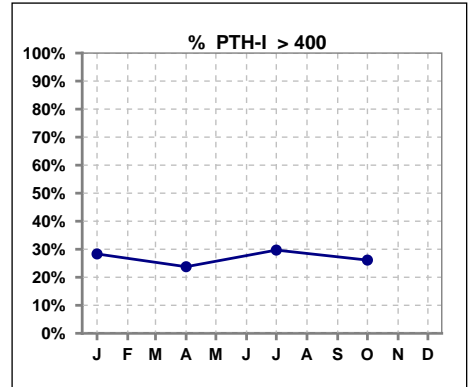
	Jan	Feb	Mar	Apr	May	Jun	Jul	Aug	Sep	Oct	Nov	Dec
# PTH-I	113			101			101			111		
# PTH-I < 150	26			30			26			29		
Pop. Mean	320			291			316			303		
Std. Deviation	255			240			230			224		
% PTH-I < 150	23%			30%			26%			26%		



	Jan	Feb	Mar	Apr	May	Jun	Jul	Aug	Sep	Oct	Nov	Dec
# PTH-I	113			101			101			111		
# PTH-I > 300	43			33			47			47		
Pop. Mean	320			291			316			303		
Std. Deviation	255			240			230			224		
% PTH-I > 300	38%			33%			47%			42%		



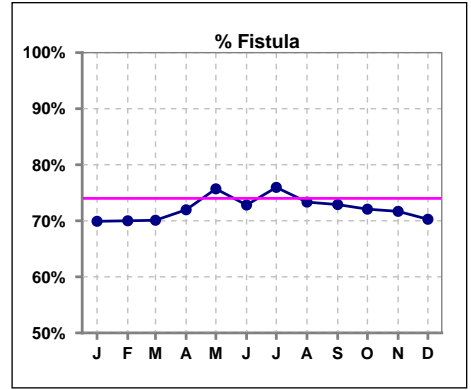
	Jan	Feb	Mar	Apr	May	Jun	Jul	Aug	Sep	Oct	Nov	Dec
# PTH-I	113			101			101			111		
# PTH-I > 400	32			24			30			29		
Pop. Mean	320			291			316			303		
Std. Deviation	255			240			230			224		
% PTH-I > 400	28%			24%			30%			26%		



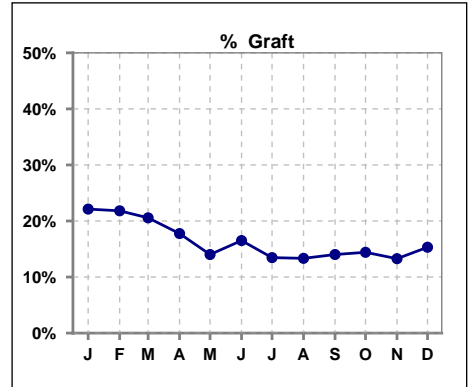
Methodology: a) All labs for 'Adequacy of Dialysis', 'Nutrition', 'Osteodystrophy', 'Anemia' and 'Diabetes' based on last value of month; b) BP's and #L processed are average of all values for month; c) Access data takes last access of month; d) Values for SGA and 'Infection Control' use most recent result.

IV. ACCESS

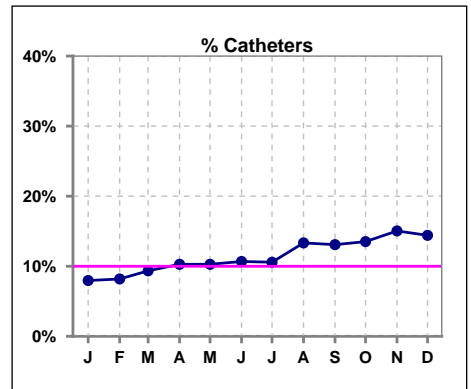
	Jan	Feb	Mar	Apr	May	Jun	Jul	Aug	Sep	Oct	Nov	Dec
# Access	113	110	107	107	107	103	104	105	107	111	113	111
# Fistula	79	77	75	77	81	75	79	77	78	80	81	78
% Fistula	70%	70%	70%	72%	76%	73%	76%	73%	73%	72%	72%	70%



	Jan	Feb	Mar	Apr	May	Jun	Jul	Aug	Sep	Oct	Nov	Dec
# Access	113	110	107	107	107	103	104	105	107	111	113	111
# Graft	25	24	22	19	15	17	14	14	15	16	15	17
% Graft	22%	22%	21%	18%	14%	17%	13%	13%	14%	14%	13%	15%



	Jan	Feb	Mar	Apr	May	Jun	Jul	Aug	Sep	Oct	Nov	Dec
# Access	113	110	107	107	107	103	104	105	107	111	113	111
# Catheters	9	9	10	11	11	11	11	14	14	15	17	16
% Catheters	8%	8%	9%	10%	10%	11%	11%	13%	13%	14%	15%	14%



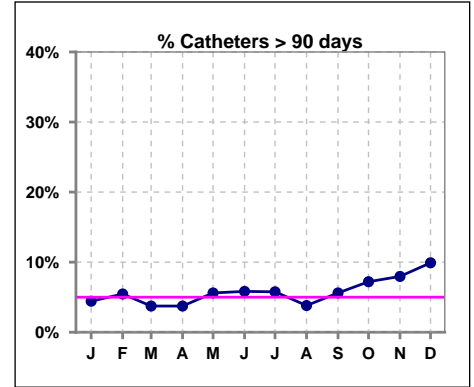
Methodology: a) All labs for 'Adequacy of Dialysis', 'Nutrition', 'Osteodystrophy', 'Anemia' and 'Diabetes' based on last value of month; b) BP's and #L processed are average of all values for month; c) Access data takes last access of month; d) Values for SGA and 'Infection Control' use most recent result.

IV. ACCESS - CONT.

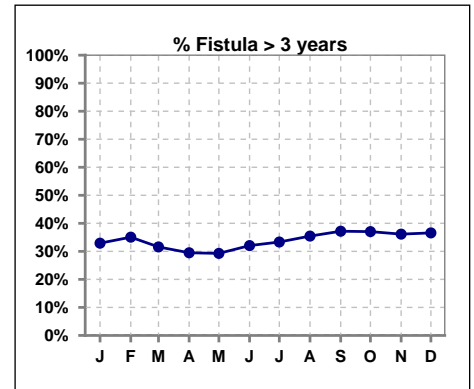
Catheters > 90 days

	Jan	Feb	Mar	Apr	May	Jun	Jul	Aug	Sep	Oct	Nov	Dec
# Access	113	110	107	107	107	103	104	105	107	111	113	111
# Catheters	5	6	4	4	6	6	6	4	6	8	9	11
% Catheters	4%	5%	4%	4%	6%	6%	6%	4%	6%	7%	8%	10%

Definition: Catheter in use on last treatment of the month



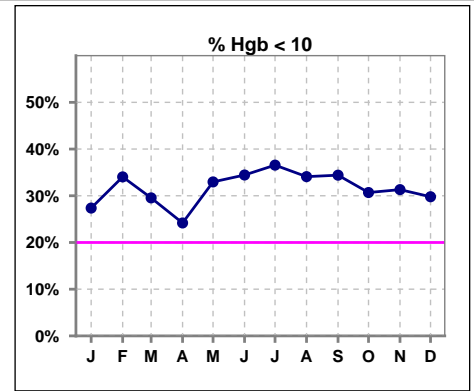
	Jan	Feb	Mar	Apr	May	Jun	Jul	Aug	Sep	Oct	Nov	Dec
# Fistula	79	77	76	78	82	78	81	79	78	81	83	82
# Fistula > 3 yrs	26	27	24	23	24	25	27	28	29	30	30	30
% Fistula > 3 yrs	33%	35%	32%	29%	29%	32%	33%	35%	37%	37%	36%	37%



V. ANEMIA

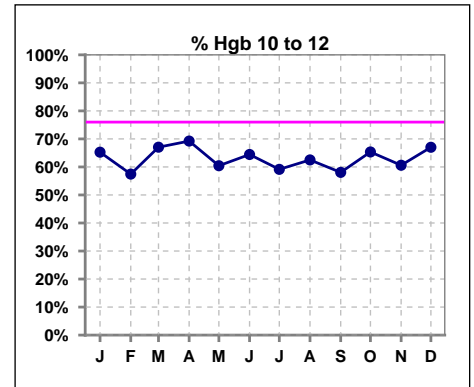
	Jan	Feb	Mar	Apr	May	Jun	Jul	Aug	Sep	Oct	Nov	Dec
# Hgb	95	94	88	91	91	90	93	88	93	101	99	94
# Hgb < 10	26	32	26	22	30	31	34	30	32	31	31	28
Pop. Mean	10.4	10.4	10.4	10.5	10.5	10.4	10.2	10.2	10.4	10.3	10.5	10.3
Std. Deviation	1.1	1.1	1.0	1.2	1.2	1.3	1.2	1.2	1.1	1.0	1.1	1.1
% Hgb < 10	27%	34%	30%	24%	33%	34%	37%	34%	34%	31%	31%	30%

Note: Excludes patients who received no ESA in month.



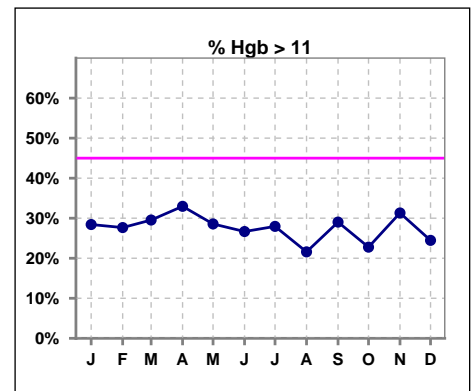
	Jan	Feb	Mar	Apr	May	Jun	Jul	Aug	Sep	Oct	Nov	Dec
# Hgb	95	94	88	91	91	90	93	88	93	101	99	94
# Hgb 10 to 12	62	54	59	63	55	58	55	55	54	66	60	63
Pop. Mean	10.4	10.4	10.4	10.5	10.5	10.4	10.2	10.2	10.4	10.3	10.5	10.3
Std. Deviation	1.1	1.1	1.0	1.2	1.2	1.3	1.2	1.2	1.1	1.0	1.1	1.1
% Hgb 10 to 12	65%	57%	67%	69%	60%	64%	59%	63%	58%	65%	61%	67%

Note: Excludes patients who received no ESA in month.



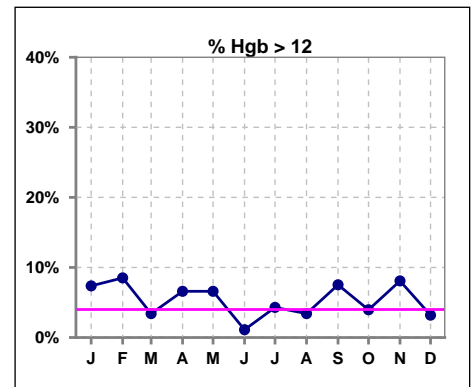
	Jan	Feb	Mar	Apr	May	Jun	Jul	Aug	Sep	Oct	Nov	Dec
# Hgb	95	94	88	91	91	90	93	88	93	101	99	94
# Hgb > 11	27	26	26	30	26	24	26	19	27	23	31	23
Pop. Mean	10.4	10.4	10.4	10.5	10.5	10.4	10.2	10.2	10.4	10.3	10.5	10.3
Std. Deviation	1.1	1.1	1.0	1.2	1.2	1.3	1.2	1.2	1.1	1.0	1.1	1.1
% Hgb > 11	28%	28%	30%	33%	29%	27%	28%	22%	29%	23%	31%	24%

Note: Excludes patients who received no ESA in month.



	Jan	Feb	Mar	Apr	May	Jun	Jul	Aug	Sep	Oct	Nov	Dec
# Hgb	95	94	88	91	91	90	93	88	93	101	99	94
# Hgb > 12	7	8	3	6	6	1	4	3	7	4	8	3
Pop. Mean	10.4	10.4	10.4	10.5	10.5	10.4	10.2	10.2	10.4	10.3	10.5	10.3
Std. Deviation	1.1	1.1	1.0	1.2	1.2	1.3	1.2	1.2	1.1	1.0	1.1	1.1
% Hgb > 12	7%	9%	3%	7%	7%	1%	4%	3%	8%	4%	8%	3%

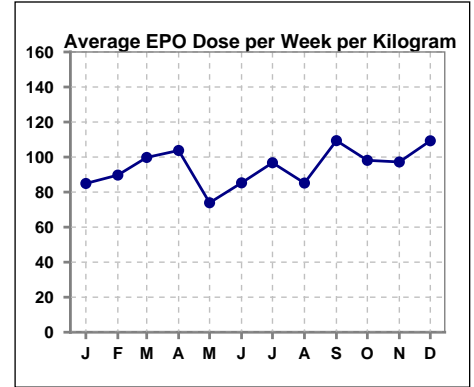
Note: Excludes patients who received no ESA in month.



V. ANEMIA - CONT.

Average EPO Dose per Week per Kilogram

	Jan	Feb	Mar	Apr	May	Jun	Jul	Aug	Sep	Oct	Nov	Dec
# Average EPO	84.9	89.7	99.8	103.8	73.9	85.3	96.8	85.2	109.4	98.1	97.2	109.3

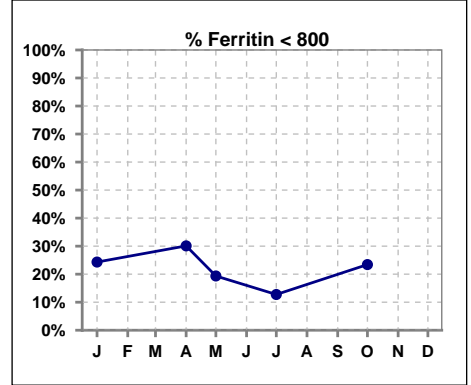


Methodology: a) All labs for 'Adequacy of Dialysis', 'Nutrition', 'Osteodystrophy', 'Anemia' and 'Diabetes' based on last value of month; b) BP's and #L processed are average of all values for month; c) Access data takes last access of month; d) Values for SGA and 'Infection Control' use most recent result.

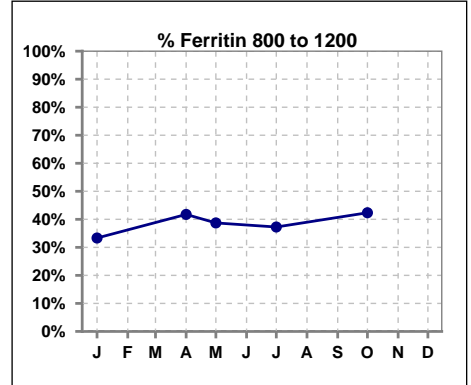
V. ANEMIA - CONT.

Iron Profile

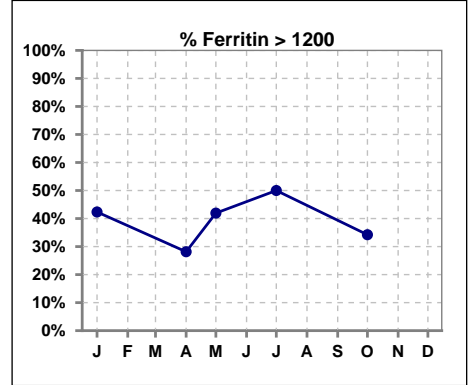
	Jan	Feb	Mar	Apr	May	Jun	Jul	Aug	Sep	Oct	Nov	Dec
# Ferritin	111			103	31		102			111		
# Ferritin < 800	27			31	6		13			26		
Pop. Mean	1149			998	1146		1265			1067		
Std. Deviation	601			402	477		701			417		
% Ferritin < 800	24%			30%	19%		13%			23%		



	Jan	Feb	Mar	Apr	May	Jun	Jul	Aug	Sep	Oct	Nov	Dec
# Ferritin	111			103	31		102			111		
# Ferritin 800 to 1200	37			43	12		38			47		
Pop. Mean	1149			998	1146		1265			1067		
Std. Deviation	601			402	477		701			417		
% Ferritin 800 to 1200	33%			42%	39%		37%			42%		



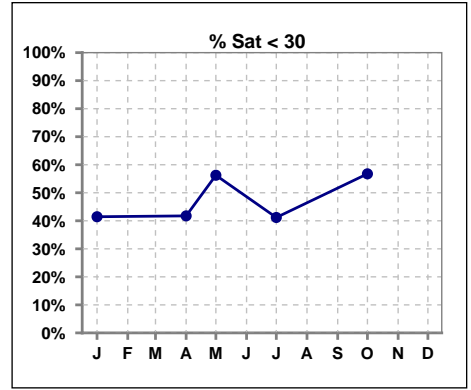
	Jan	Feb	Mar	Apr	May	Jun	Jul	Aug	Sep	Oct	Nov	Dec
# Ferritin	111			103	31		102			111		
# Ferritin > 1200	47			29	13		51			38		
Pop. Mean	1149			998	1146		1265			1067		
Std. Deviation	601			402	477		701			417		
% Ferritin > 1200	42%			28%	42%		50%			34%		



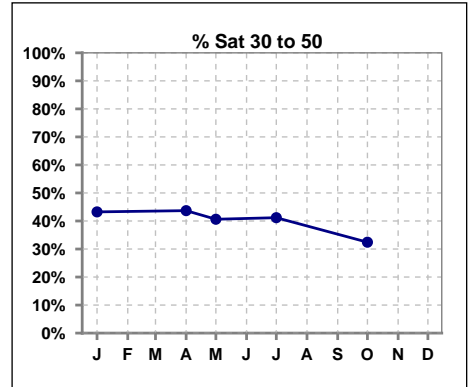
Methodology: a) All labs for 'Adequacy of Dialysis', 'Nutrition', 'Osteodystrophy', 'Anemia' and 'Diabetes' based on last value of month; b) BP's and #L processed are average of all values for month; c) Access data takes last access of month; d) Values for SGA and 'Infection Control' use most recent result.

V. ANEMIA - CONT.

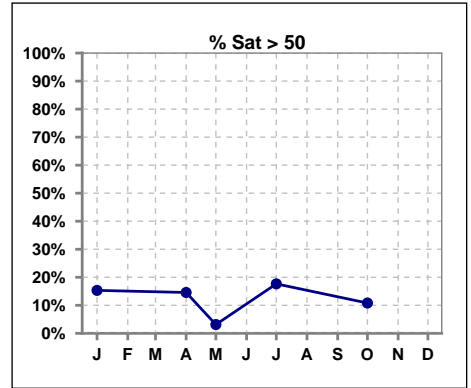
	Jan	Feb	Mar	Apr	May	Jun	Jul	Aug	Sep	Oct	Nov	Dec
# % Sat	111			103	32		102			111		
# % Sat < 30	46			43	18		42			63		
Pop. Mean	35			35	30		36			31		
Std. Deviation	17			16	14		18			16		
% % Sat < 30	41%			42%	56%		41%			57%		



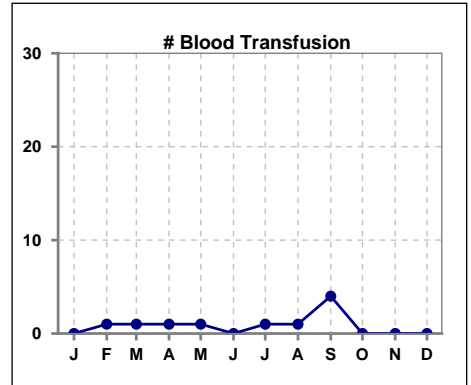
	Jan	Feb	Mar	Apr	May	Jun	Jul	Aug	Sep	Oct	Nov	Dec
# % Sat	111			103	32		102			111		
# % Sat 30 to 50	48			45	13		42			36		
Pop. Mean	35			35	30		36			31		
Std. Deviation	17			16	14		18			16		
% % Sat 30 to 50	43%			44%	41%		41%			32%		



	Jan	Feb	Mar	Apr	May	Jun	Jul	Aug	Sep	Oct	Nov	Dec
# % Sat	111			103	32		102			111		
# % Sat > 50	17			15	1		18			12		
Pop. Mean	35			35	30		36			31		
Std. Deviation	17			16	14		18			16		
% % Sat > 50	15%			15%	3%		18%			11%		



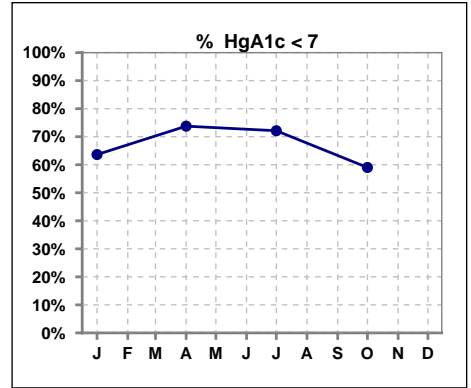
	Jan	Feb	Mar	Apr	May	Jun	Jul	Aug	Sep	Oct	Nov	Dec
# Patient	112	111	108	108	109	108	107	106	108	114	117	114
# Blood Transfusion	0	1	1	1	1	0	1	1	4	0	0	0



Methodology: a) All labs for 'Adequacy of Dialysis', 'Nutrition', 'Osteodystrophy', 'Anemia' and 'Diabetes' based on last value of month; b) BP's and #L processed are average of all values for month; c) Access data takes last access of month; d) Values for SGA and 'Infection Control' use most recent result.

VI. Diabetes

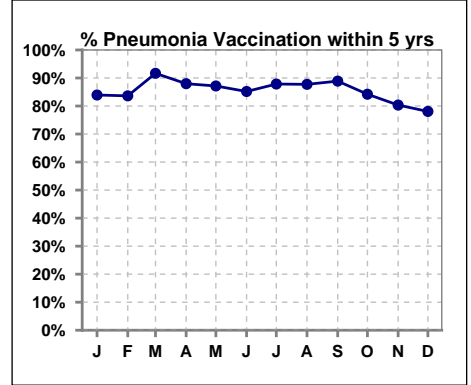
	Jan	Feb	Mar	Apr	May	Jun	Jul	Aug	Sep	Oct	Nov	Dec
# HgA1c	66			61			61			61		
# HgA1c < 7	42			45			44			36		
Pop. Mean	6.6			6.4			6.5			6.9		
Std. Deviation	1.48			1.42			1.24			1.62		
% HgA1c < 7	64%			74%			72%			59%		



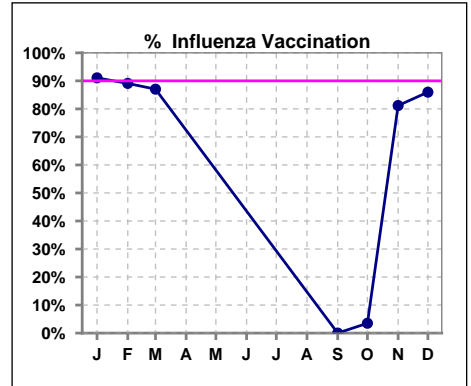
VII. Infection Control

Pneumonia vaccination within the past five years

	Jan	Feb	Mar	Apr	May	Jun	Jul	Aug	Sep	Oct	Nov	Dec
# Patient	112	110	108	108	109	108	107	106	108	114	117	114
# Pneumonia	94	92	99	95	95	92	94	93	96	96	94	89
% Pneumonia	84%	84%	92%	88%	87%	85%	88%	88%	89%	84%	80%	78%



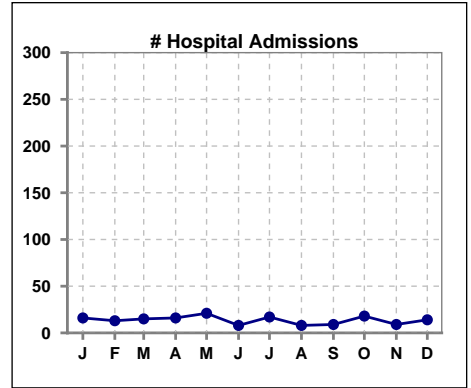
	Jan	Feb	Mar	Apr	May	Jun	Jul	Aug	Sep	Oct	Nov	Dec
# Patient	112	110	108						108	114	117	114
# Influenza	102	98	94						0	4	95	98
% Influenza	91%	89%	87%						0%	4%	81%	86%



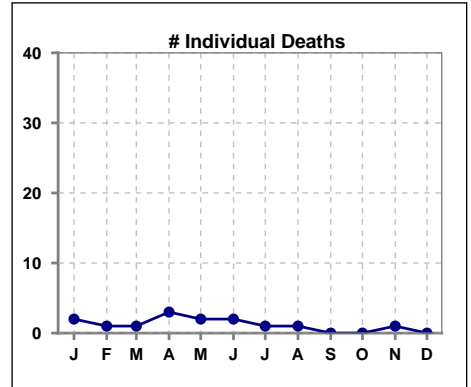
Methodology: a) All labs for 'Adequacy of Dialysis', 'Nutrition', 'Osteodystrophy', 'Anemia' and 'Diabetes' based on last value of month; b) BP's and #L processed are average of all values for month; c) Access data takes last access of month; d) Values for SGA and 'Infection Control' use most recent result.

VIII. Misc

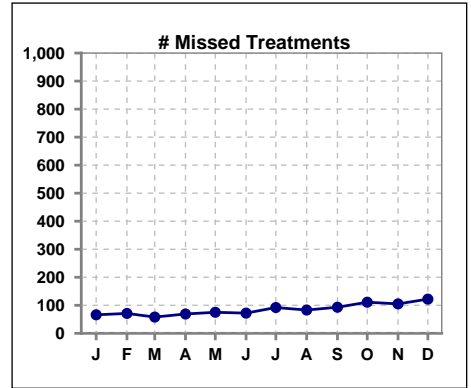
	Jan	Feb	Mar	Apr	May	Jun	Jul	Aug	Sep	Oct	Nov	Dec
# Patient	112	111	108	108	109	108	107	106	108	114	117	114
# Hospital Admissions	16	13	15	16	21	8	17	8	9	18	9	14



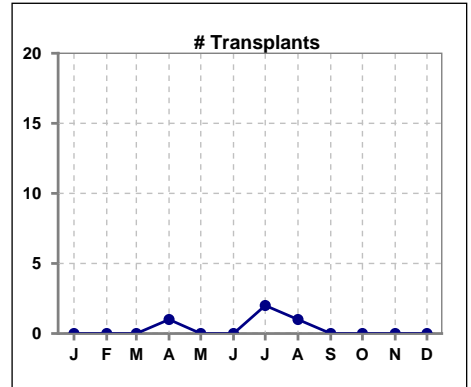
	Jan	Feb	Mar	Apr	May	Jun	Jul	Aug	Sep	Oct	Nov	Dec
# Patient	112	111	108	108	109	108	107	106	108	114	117	114
# Individual Deaths	2	1	1	3	2	2	1	1	0	0	1	0



	Jan	Feb	Mar	Apr	May	Jun	Jul	Aug	Sep	Oct	Nov	Dec
# Patient	112	111	108	108	109	108	107	106	108	114	117	114
# Missed Treatments	66	71	58	69	75	72	92	83	93	111	105	122



	Jan	Feb	Mar	Apr	May	Jun	Jul	Aug	Sep	Oct	Nov	Dec
# Patient	112	111	108	108	109	108	107	106	108	114	117	114
# Transplants	0	0	0	1	0	0	2	1	0	0	0	0



Methodology: a) All labs for 'Adequacy of Dialysis', 'Nutrition', 'Osteodystrophy', 'Anemia' and 'Diabetes' based on last value of month; b) BP's and #L processed are average of all values for month; c) Access data takes last access of month; d) Values for SGA and 'Infection Control' use most recent result.