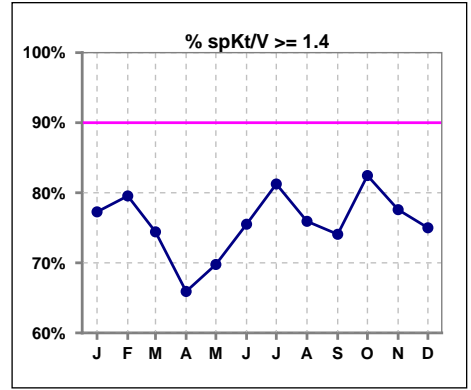
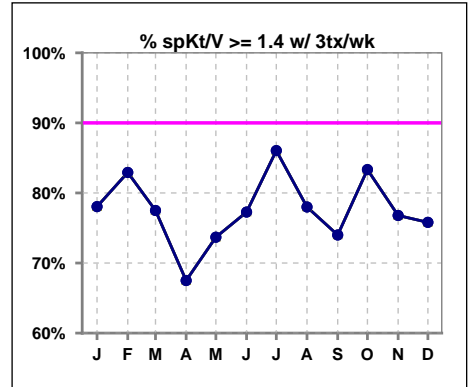


I. ADEQUACY OF DIALYSIS

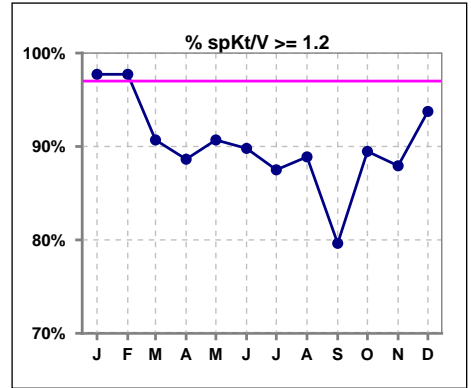
	Jan	Feb	Mar	Apr	May	Jun	Jul	Aug	Sep	Oct	Nov	Dec
# spKt/V	44	44	43	44	43	49	48	54	54	57	58	64
# spKt/V >= 1.4	34	35	32	29	30	37	39	41	40	47	45	48
Pop. Mean	1.65	1.63	1.59	1.53	1.51	1.61	1.58	1.59	1.53	1.56	1.55	1.57
Std. Deviation	0.28	0.29	0.33	0.30	0.38	0.42	0.33	0.31	0.45	0.30	0.34	0.35
% spKt/V >= 1.4	77%	80%	74%	66%	70%	76%	81%	76%	74%	82%	78%	75%



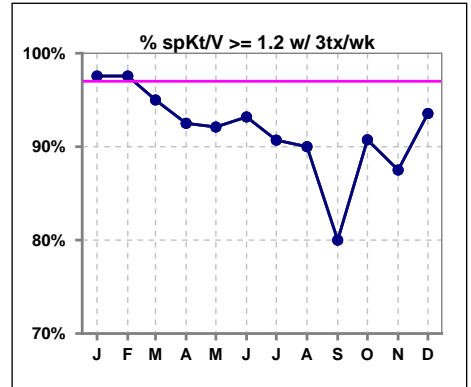
	Jan	Feb	Mar	Apr	May	Jun	Jul	Aug	Sep	Oct	Nov	Dec
# spKt/V w/ 3tx/wk	41	41	40	40	38	44	43	50	50	54	56	62
# spKt/V >= 1.4 w/3tx/wk	32	34	31	27	28	34	37	39	37	45	43	47
Pop. Mean	1.66	1.65	1.61	1.54	1.52	1.58	1.59	1.61	1.53	1.56	1.53	1.57
Std. Deviation	0.28	0.29	0.31	0.29	0.35	0.29	0.31	0.31	0.46	0.29	0.34	0.35
% >= 1.4 w/3tx/wk	78%	83%	78%	68%	74%	77%	86%	78%	74%	83%	77%	76%



	Jan	Feb	Mar	Apr	May	Jun	Jul	Aug	Sep	Oct	Nov	Dec
# spKt/V	44	44	43	44	43	49	48	54	54	57	58	64
# spKt/V >= 1.2	43	43	39	39	39	44	42	48	43	51	51	60
Pop. Mean	1.65	1.63	1.59	1.53	1.51	1.61	1.58	1.59	1.53	1.56	1.55	1.57
Std. Deviation	0.28	0.29	0.33	0.30	0.38	0.42	0.33	0.31	0.45	0.30	0.34	0.35
% spKt/V >= 1.2	98%	98%	91%	89%	91%	90%	88%	89%	80%	89%	88%	94%



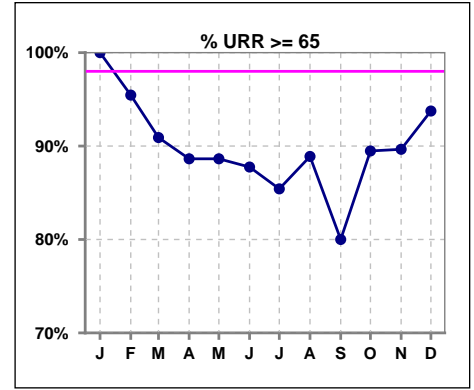
	Jan	Feb	Mar	Apr	May	Jun	Jul	Aug	Sep	Oct	Nov	Dec
# spKt/V w/ 3tx/wk	41	41	40	40	38	44	43	50	50	54	56	62
# spKt/V >= 1.2 w/3tx/wk	40	40	38	37	35	41	39	45	40	49	49	58
Pop. Mean	1.66	1.65	1.61	1.54	1.52	1.58	1.59	1.61	1.53	1.56	1.53	1.57
Std. Deviation	0.28	0.29	0.31	0.29	0.35	0.29	0.31	0.31	0.46	0.29	0.34	0.35
% >= 1.2 w/3tx/wk	98%	98%	95%	93%	92%	93%	91%	90%	80%	91%	88%	94%



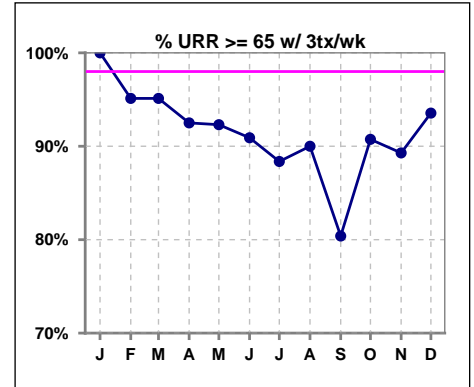
Methodology: a) All labs for 'Adequacy of Dialysis', 'Nutrition', 'Osteodystrophy', 'Anemia' and 'Diabetes' based on last value of month; b) BP's and #L processed are average of all values for month; c) Access data takes last access of month; d) Values for SGA and 'Infection Control' use most recent result.

I. ADEQUACY OF DIALYSIS - CONT.

	Jan	Feb	Mar	Apr	May	Jun	Jul	Aug	Sep	Oct	Nov	Dec
# URR	44	44	44	44	44	49	48	54	55	57	58	64
# URR >= 65	44	42	40	39	39	43	41	48	44	51	52	60
Pop. Mean	76	75	74	73	72	74	74	74	72	73	73	73
Std. Deviation	5.28	5.70	8.04	6.28	9.65	6.69	6.88	6.75	12.42	6.96	8.65	10.17
% URR >= 65	100%	95%	91%	89%	89%	88%	85%	89%	80%	89%	90%	94%



	Jan	Feb	Mar	Apr	May	Jun	Jul	Aug	Sep	Oct	Nov	Dec
# URR w/ 3tx/wk	41	41	41	40	39	44	43	50	51	54	56	62
# URR>=65 w/ 3tx/wk	41	39	39	37	36	40	38	45	41	49	50	58
Pop. Mean	76	76	74	73	72	74	74	74	72	73	73	73
Std. Deviation	5.29	5.56	7.27	5.64	9.32	6.30	6.57	6.78	12.69	6.97	8.65	10.29
% URR>=65 w/ 3tx/wk	100%	95%	95%	93%	92%	91%	88%	90%	80%	91%	89%	94%

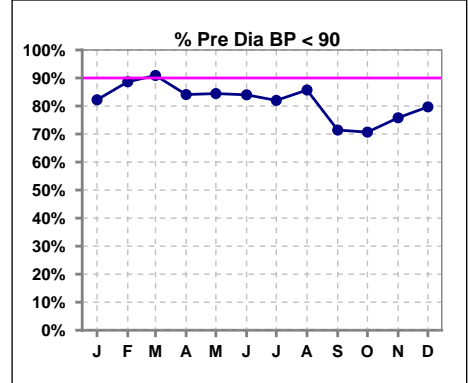


Methodology: a) All labs for 'Adequacy of Dialysis', 'Nutrition', 'Osteodystrophy', 'Anemia' and 'Diabetes' based on last value of month; b) BP's and #L processed are average of all values for month; c) Access data takes last access of month; d) Values for SGA and 'Infection Control' use most recent result.

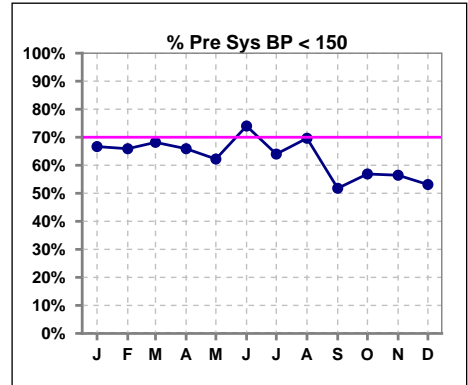
I. ADEQUACY OF DIALYSIS - CONT.

Blood Pressure Control (Pre)

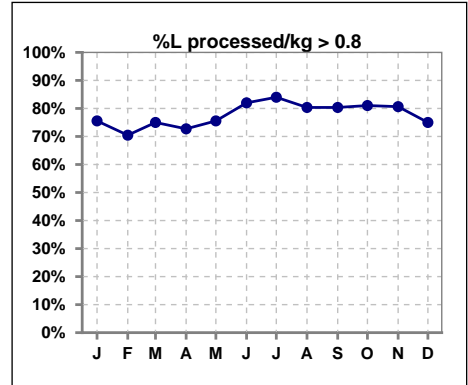
	Jan	Feb	Mar	Apr	May	Jun	Jul	Aug	Sep	Oct	Nov	Dec
# Pre Dia BP	45	44	44	44	45	50	50	56	56	58	62	64
# Pre Dia BP < 90	37	39	40	37	38	42	41	48	40	41	47	51
Pop. Mean	78	77	76	77	77	78	77	77	81	81	79	79
Std. Deviation	12.0	12.5	12.4	18.6	13.6	18.2	15.7	14.6	16.8	16.6	15.8	14.3
% Pre Dia BP < 90	82%	89%	91%	84%	84%	84%	82%	86%	71%	71%	76%	80%



	Jan	Feb	Mar	Apr	May	Jun	Jul	Aug	Sep	Oct	Nov	Dec
# Pre Sys BP	45	44	44	44	45	50	50	56	56	58	62	64
# Pre Sys BP < 150	30	29	30	29	28	37	32	39	29	33	35	34
Pop. Mean	144	144	143	142	144	141	142	142	148	149	149	147
Std. Deviation	19.5	20.5	19.7	20.3	18.0	18.0	18.2	18.3	19.3	20.0	19.7	18.9
%Pre Sys BP <150	67%	66%	68%	66%	62%	74%	64%	70%	52%	57%	56%	53%



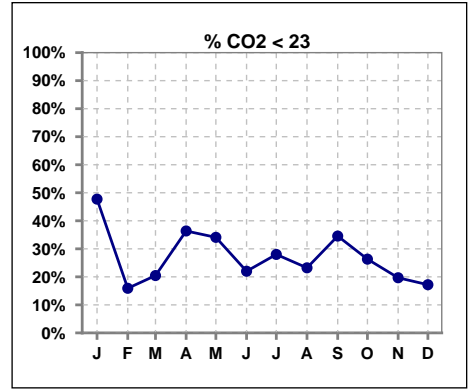
	Jan	Feb	Mar	Apr	May	Jun	Jul	Aug	Sep	Oct	Nov	Dec
# L processed/kg	45	44	44	44	45	50	50	56	56	58	62	64
# L processed/kg>0.8	34	31	33	32	34	41	42	45	45	47	50	48
Pop. Mean	1	1	1	1	1	1	1	1	1	1	1	1
Std. Deviation	0.3	0.3	0.3	0.3	0.3	0.3	0.3	0.3	0.3	0.3	0.3	0.3
% L processed/kg>0.8	76%	70%	75%	73%	76%	82%	84%	80%	80%	81%	81%	75%



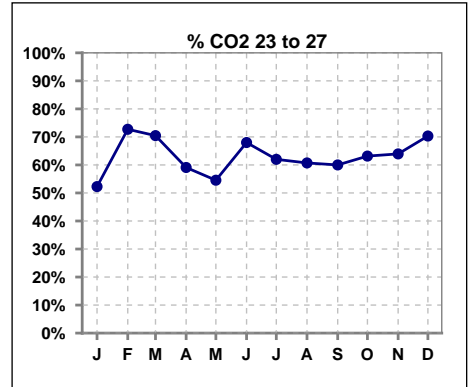
Methodology: a) All labs for 'Adequacy of Dialysis', 'Nutrition', 'Osteodystrophy', 'Anemia' and 'Diabetes' based on last value of month; b) BP's and #L processed are average of all values for month; c) Access data takes last access of month; d) Values for SGA and 'Infection Control' use most recent result.

I. ADEQUACY OF DIALYSIS - CONT.

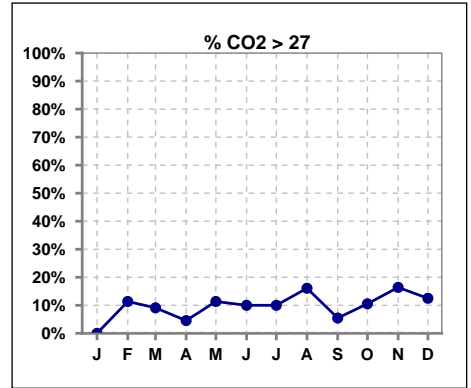
	Jan	Feb	Mar	Apr	May	Jun	Jul	Aug	Sep	Oct	Nov	Dec
# CO2	44	44	44	44	44	50	50	56	55	57	61	64
# CO2 < 23	21	7	9	16	15	11	14	13	19	15	12	11
Pop. Mean	22	25	24	23	24	24	24	24	23	24	25	24
Std. Deviation	3.16	3.10	2.88	3.53	3.61	3.48	2.86	3.10	3.66	3.09	3.08	3.16
% CO2 < 23	48%	16%	20%	36%	34%	22%	28%	23%	35%	26%	20%	17%



	Jan	Feb	Mar	Apr	May	Jun	Jul	Aug	Sep	Oct	Nov	Dec
# CO2	44	44	44	44	44	50	50	56	55	57	61	64
# CO2 23 to 27	23	32	31	26	24	34	31	34	33	36	39	45
Pop. Mean	22	25	24	23	24	24	24	24	23	24	25	24
Std. Deviation	3.16	3.10	2.88	3.53	3.61	3.48	2.86	3.10	3.66	3.09	3.08	3.16
% CO2 23 to 27	52%	73%	70%	59%	55%	68%	62%	61%	60%	63%	64%	70%



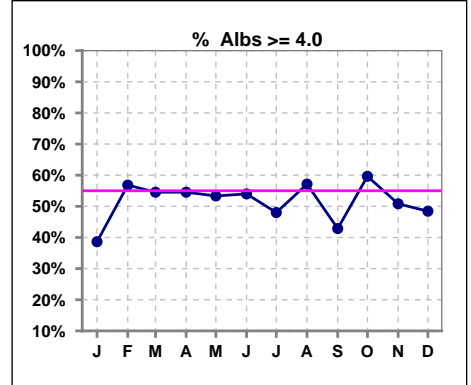
	Jan	Feb	Mar	Apr	May	Jun	Jul	Aug	Sep	Oct	Nov	Dec
# CO2	44	44	44	44	44	50	50	56	55	57	61	64
# CO2 > 27	0	5	4	2	5	5	5	9	3	6	10	8
Pop. Mean	22	25	24	23	24	24	24	24	23	24	25	24
Std. Deviation	3.16	3.10	2.88	3.53	3.61	3.48	2.86	3.10	3.66	3.09	3.08	3.16
% CO2 > 27	0%	11%	9%	5%	11%	10%	10%	16%	5%	11%	16%	13%



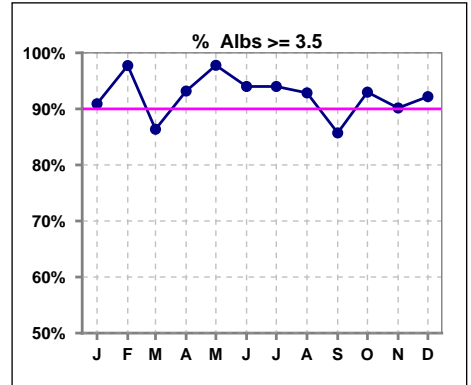
*Albumin values use BCG method - as of July 2001

II. NUTRITION

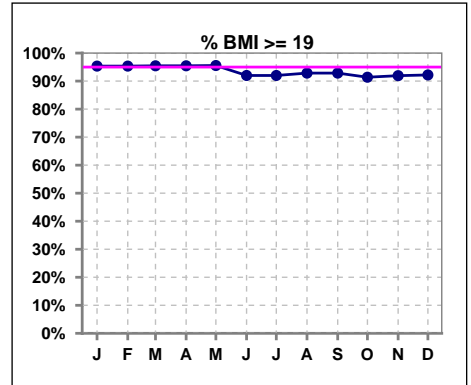
	Jan	Feb	Mar	Apr	May	Jun	Jul	Aug	Sep	Oct	Nov	Dec
# Albumin	44	44	44	44	45	50	50	56	56	57	61	64
# Albumin >= 4.0	17	25	24	24	24	27	24	32	24	34	31	31
Pop. Mean	3.9	4.0	3.9	4.0	4.0	3.9	3.9	3.9	3.9	4.0	3.9	3.9
Std. Deviation	0.29	0.31	0.39	0.35	0.31	0.34	0.43	0.44	0.42	0.43	0.47	0.39
% Alb >= 4.0	39%	57%	55%	55%	53%	54%	48%	57%	43%	60%	51%	48%



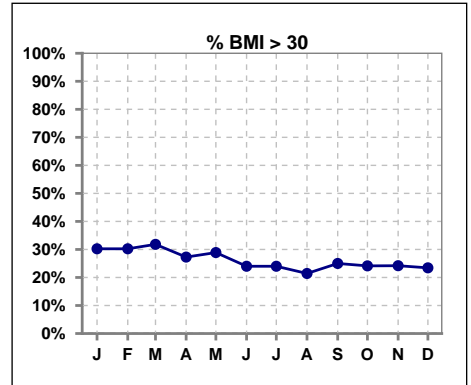
	Jan	Feb	Mar	Apr	May	Jun	Jul	Aug	Sep	Oct	Nov	Dec
# Albumin	44	44	44	44	45	50	50	56	56	57	61	64
# Albumin >= 3.5	40	43	38	41	44	47	47	52	48	53	55	59
Pop. Mean	3.9	4.0	3.9	4.0	4.0	3.9	3.9	3.9	3.9	4.0	3.9	3.9
Std. Deviation	0.29	0.31	0.39	0.35	0.31	0.34	0.43	0.44	0.42	0.43	0.47	0.39
% Alb >= 3.5	91%	98%	86%	93%	98%	94%	94%	93%	86%	93%	90%	92%



	Jan	Feb	Mar	Apr	May	Jun	Jul	Aug	Sep	Oct	Nov	Dec
# BMI	43	43	44	44	45	50	50	56	56	58	62	66
# BMI >= 19	41	41	42	42	43	46	46	52	52	53	57	59
Pop. Mean	27	27	27	27	27	27	27	26	27	26	26	26
Std. Deviation	7.0	6.9	6.8	6.8	7.5	7.3	7.0	5.8	6.0	6.0	5.9	5.6
% BMI >= 19	95%	95%	95%	95%	96%	92%	92%	93%	93%	91%	92%	92%



	Jan	Feb	Mar	Apr	May	Jun	Jul	Aug	Sep	Oct	Nov	Dec
# BMI	43	43	44	44	45	50	50	56	56	58	62	66
# BMI > 30	13	13	14	12	13	12	12	12	14	14	15	15
Pop. Mean	27	27	27	27	27	27	27	26	27	26	26	26
Std. Deviation	7.0	6.9	6.8	6.8	7.5	7.3	7.0	5.8	6.0	6.0	5.9	5.6
% BMI > 30	30%	30%	32%	27%	29%	24%	24%	21%	25%	24%	24%	23%

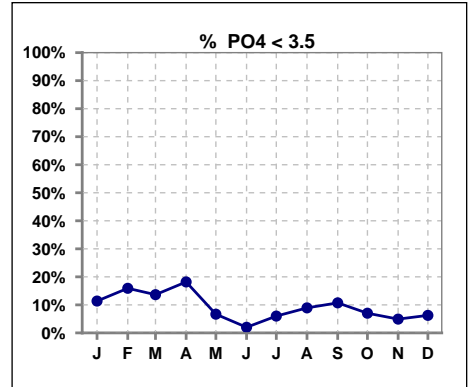


Methodology: a) All labs for 'Adequacy of Dialysis', 'Nutrition', 'Osteodystrophy', 'Anemia' and 'Diabetes' based on last value of month; b) BP's and #L processed are average of all values for month; c) Access data takes last access of month; d) Values for SGA and 'Infection Control' use most recent result.

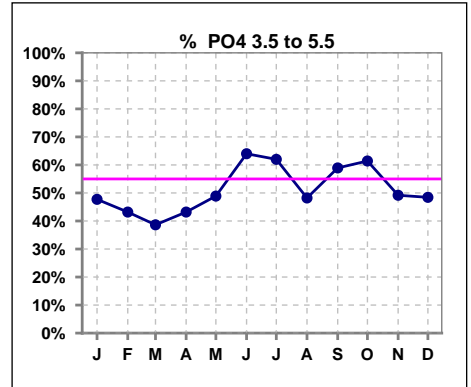
Lab methodology for PTH changed January 2012

III. OSTEODYSTROPHY

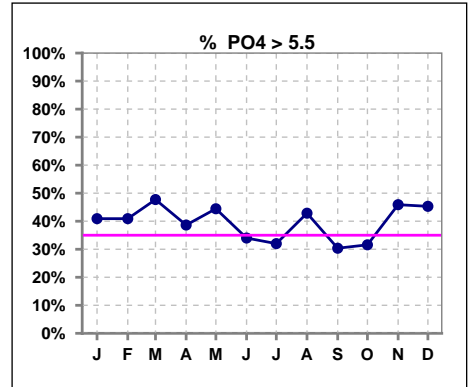
	Jan	Feb	Mar	Apr	May	Jun	Jul	Aug	Sep	Oct	Nov	Dec
# PO4	44	44	44	44	45	50	50	56	56	57	61	64
# PO4 < 3.5	5	7	6	8	3	1	3	5	6	4	3	4
Pop. Mean	5.3	5.2	5.6	5.2	5.6	5.6	5.3	5.3	5.2	5.5	5.8	5.7
Std. Deviation	1.78	1.56	1.81	1.78	1.86	1.70	1.37	1.61	1.56	1.99	2.16	1.73
% PO4 < 3.5	11%	16%	14%	18%	7%	2%	6%	9%	11%	7%	5%	6%



	Jan	Feb	Mar	Apr	May	Jun	Jul	Aug	Sep	Oct	Nov	Dec
# PO4	44	44	44	44	45	50	50	56	56	57	61	64
# PO4 3.5 to 5.5	21	19	17	19	22	32	31	27	33	35	30	31
Pop. Mean	5.3	5.2	5.6	5.2	5.6	5.6	5.3	5.3	5.2	5.5	5.8	5.7
Std. Deviation	1.78	1.56	1.81	1.78	1.86	1.70	1.37	1.61	1.56	1.99	2.16	1.73
% PO4 3.5 to 5.5	48%	43%	39%	43%	49%	64%	62%	48%	59%	61%	49%	48%



	Jan	Feb	Mar	Apr	May	Jun	Jul	Aug	Sep	Oct	Nov	Dec
# PO4	44	44	44	44	45	50	50	56	56	57	61	64
# PO4 > 5.5	18	18	21	17	20	17	16	24	17	18	28	29
Pop. Mean	5.3	5.2	5.6	5.2	5.6	5.6	5.3	5.3	5.2	5.5	5.8	5.7
Std. Deviation	1.78	1.56	1.81	1.78	1.86	1.70	1.37	1.61	1.56	1.99	2.16	1.73
% PO4 > 5.5	41%	41%	48%	39%	44%	34%	32%	43%	30%	32%	46%	45%

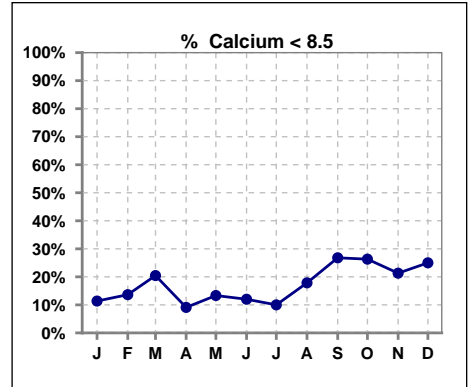


Methodology: a) All labs for 'Adequacy of Dialysis', 'Nutrition', 'Osteodystrophy', 'Anemia' and 'Diabetes' based on last value of month; b) BP's and #L processed are average of all values for month; c) Access data takes last access of month; d) Values for SGA and 'Infection Control' use most recent result.

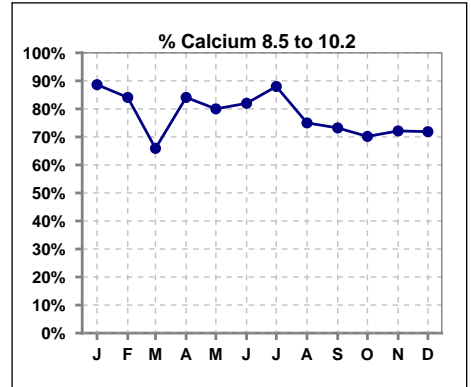
Lab methodology for PTH changed January 2012

III. OSTEODYSTROPHY - CONT.

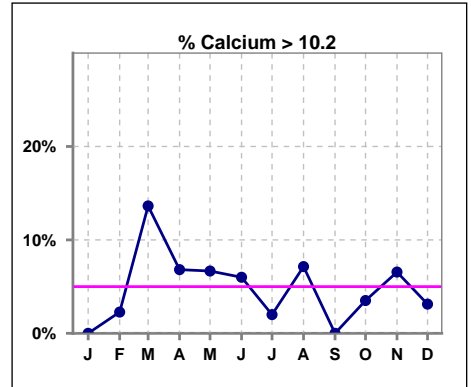
	Jan	Feb	Mar	Apr	May	Jun	Jul	Aug	Sep	Oct	Nov	Dec
# Calcium	44	44	44	44	45	50	50	56	56	57	61	64
# Calcium < 8.5	5	6	9	4	6	6	5	10	15	15	13	16
Pop. Mean	9.1	9.1	9.2	9.2	9.2	9.1	9.0	9.1	8.8	8.9	8.9	8.9
Std. Deviation	0.62	0.63	0.91	0.68	0.77	0.75	0.69	0.79	0.83	0.79	0.90	0.80
% Calcium < 8.5	11%	14%	20%	9%	13%	12%	10%	18%	27%	26%	21%	25%



	Jan	Feb	Mar	Apr	May	Jun	Jul	Aug	Sep	Oct	Nov	Dec
# Calcium	44	44	44	44	45	50	50	56	56	57	61	64
# Calcium 8.5 to 10.2	39	37	29	37	36	41	44	42	41	40	44	46
Pop. Mean	9.1	9.1	9.2	9.2	9.2	9.1	9.0	9.1	8.8	8.9	8.9	8.9
Std. Deviation	0.62	0.63	0.91	0.68	0.77	0.75	0.69	0.79	0.83	0.79	0.90	0.80
% Calcium 8.5 to 10.2	89%	84%	66%	84%	80%	82%	88%	75%	73%	70%	72%	72%



	Jan	Feb	Mar	Apr	May	Jun	Jul	Aug	Sep	Oct	Nov	Dec
# Calcium	44	44	44	44	45	50	50	56	56	57	61	64
# Calcium > 10.2	0	1	6	3	3	3	1	4	0	2	4	2
Pop. Mean	9.1	9.1	9.2	9.2	9.2	9.1	9.0	9.1	8.8	8.9	8.9	8.9
Std. Deviation	0.62	0.63	0.91	0.68	0.77	0.75	0.69	0.79	0.83	0.79	0.90	0.80
% Calcium > 10.2	0%	2%	14%	7%	7%	6%	2%	7%	0%	4%	7%	3%

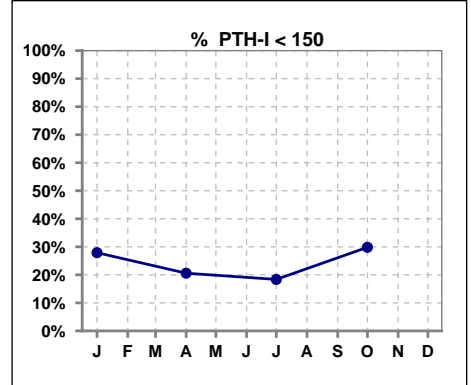


Methodology: a) All labs for 'Adequacy of Dialysis', 'Nutrition', 'Osteodystrophy', 'Anemia' and 'Diabetes' based on last value of month; b) BP's and #L processed are average of all values for month; c) Access data takes last access of month; d) Values for SGA and 'Infection Control' use most recent result.

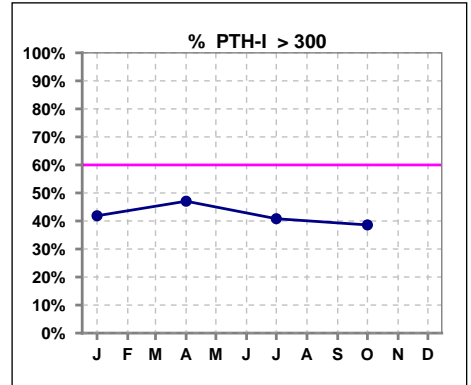
Lab methodology for PTH changed January 2012

III. OSTEODYSTROPHY - CONT.

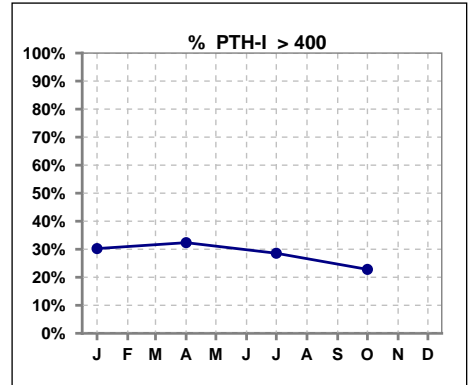
	Jan	Feb	Mar	Apr	May	Jun	Jul	Aug	Sep	Oct	Nov	Dec
# PTH-I	43			34			49			57		
# PTH-I < 150	12			7			9			17		
Pop. Mean	329			349			322			292		
Std. Deviation	274			312			211			216		
% PTH-I < 150	28%			21%			18%			30%		



	Jan	Feb	Mar	Apr	May	Jun	Jul	Aug	Sep	Oct	Nov	Dec
# PTH-I	43			34			49			57		
# PTH-I > 300	18			16			20			22		
Pop. Mean	329			349			322			292		
Std. Deviation	274			312			211			216		
% PTH-I > 300	42%			47%			41%			39%		



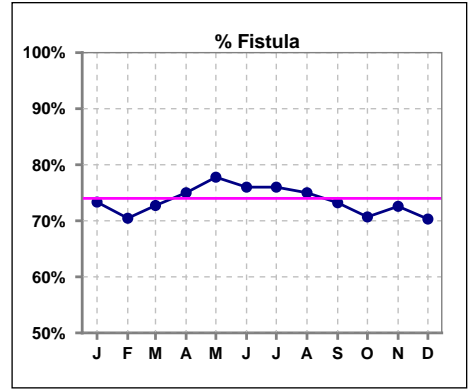
	Jan	Feb	Mar	Apr	May	Jun	Jul	Aug	Sep	Oct	Nov	Dec
# PTH-I	43			34			49			57		
# PTH-I > 400	13			11			14			13		
Pop. Mean	329			349			322			292		
Std. Deviation	274			312			211			216		
% PTH-I > 400	30%			32%			29%			23%		



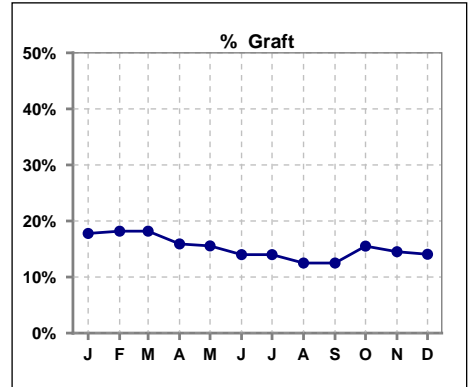
Methodology: a) All labs for 'Adequacy of Dialysis', 'Nutrition', 'Osteodystrophy', 'Anemia' and 'Diabetes' based on last value of month; b) BP's and #L processed are average of all values for month; c) Access data takes last access of month; d) Values for SGA and 'Infection Control' use most recent result.

IV. ACCESS

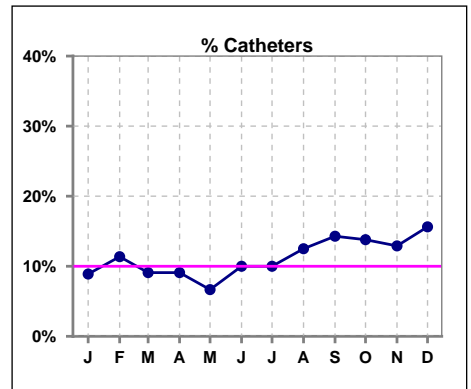
	Jan	Feb	Mar	Apr	May	Jun	Jul	Aug	Sep	Oct	Nov	Dec
# Access	45	44	44	44	45	50	50	56	56	58	62	64
# Fistula	33	31	32	33	35	38	38	42	41	41	45	45
% Fistula	73%	70%	73%	75%	78%	76%	76%	75%	73%	71%	73%	70%



	Jan	Feb	Mar	Apr	May	Jun	Jul	Aug	Sep	Oct	Nov	Dec
# Access	45	44	44	44	45	50	50	56	56	58	62	64
# Graft	8	8	8	7	7	7	7	7	7	9	9	9
% Graft	18%	18%	18%	16%	16%	14%	14%	13%	13%	16%	15%	14%



	Jan	Feb	Mar	Apr	May	Jun	Jul	Aug	Sep	Oct	Nov	Dec
# Access	45	44	44	44	45	50	50	56	56	58	62	64
# Catheters	4	5	4	4	3	5	5	7	8	8	8	10
% Catheters	9%	11%	9%	9%	7%	10%	10%	13%	14%	14%	13%	16%



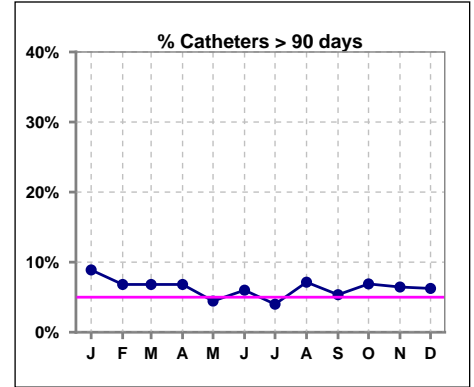
Methodology: a) All labs for 'Adequacy of Dialysis', 'Nutrition', 'Osteodystrophy', 'Anemia' and 'Diabetes' based on last value of month; b) BP's and #L processed are average of all values for month; c) Access data takes last access of month; d) Values for SGA and 'Infection Control' use most recent result.

IV. ACCESS - CONT.

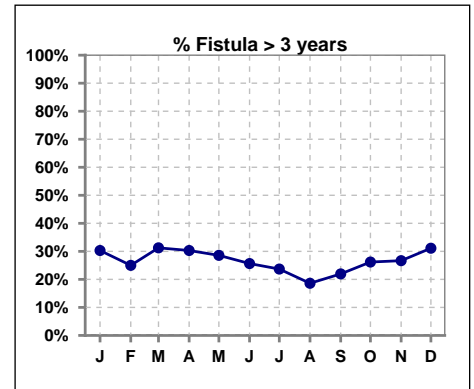
Catheters > 90 days

	Jan	Feb	Mar	Apr	May	Jun	Jul	Aug	Sep	Oct	Nov	Dec
# Access	45	44	44	44	45	50	50	56	56	58	62	64
# Catheters	4	3	3	3	2	3	2	4	3	4	4	4
% Catheters	9%	7%	7%	7%	4%	6%	4%	7%	5%	7%	6%	6%

Definition: Catheter in use on last treatment of the month



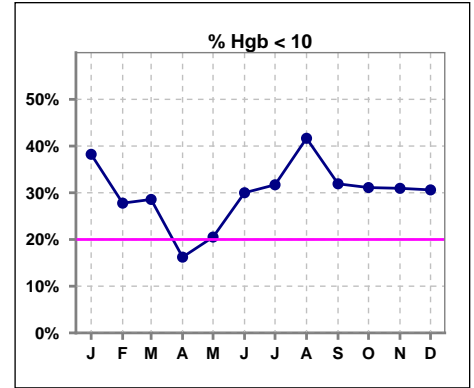
	Jan	Feb	Mar	Apr	May	Jun	Jul	Aug	Sep	Oct	Nov	Dec
# Fistula	33	32	32	33	35	39	38	43	41	42	45	45
# Fistula > 3 yrs	10	8	10	10	10	10	9	8	9	11	12	14
% Fistula > 3 yrs	30%	25%	31%	30%	29%	26%	24%	19%	22%	26%	27%	31%



V. ANEMIA

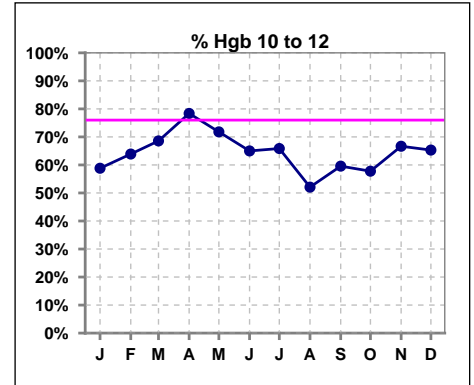
	Jan	Feb	Mar	Apr	May	Jun	Jul	Aug	Sep	Oct	Nov	Dec
# Hgb	34	36	35	37	39	40	41	48	47	45	42	49
# Hgb < 10	13	10	10	6	8	12	13	20	15	14	13	15
Pop. Mean	10.2	10.4	10.4	10.4	10.7	10.4	10.3	10.2	10.4	10.5	10.4	10.3
Std. Deviation	1.2	1.2	1.1	1.2	1.2	0.9	1.1	1.2	1.1	1.2	1.2	1.2
% Hgb < 10	38%	28%	29%	16%	21%	30%	32%	42%	32%	31%	31%	31%

Note: Excludes patients who received no ESA in month.



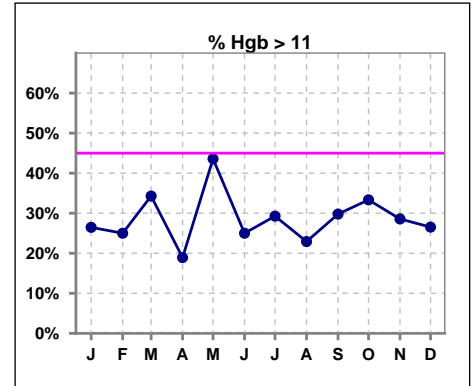
	Jan	Feb	Mar	Apr	May	Jun	Jul	Aug	Sep	Oct	Nov	Dec
# Hgb	34	36	35	37	39	40	41	48	47	45	42	49
# Hgb 10 to 12	20	23	24	29	28	26	27	25	28	26	28	32
Pop. Mean	10.2	10.4	10.4	10.4	10.7	10.4	10.3	10.2	10.4	10.5	10.4	10.3
Std. Deviation	1.2	1.2	1.1	1.2	1.2	0.9	1.1	1.2	1.1	1.2	1.2	1.2
% Hgb 10 to 12	59%	64%	69%	78%	72%	65%	66%	52%	60%	58%	67%	65%

Note: Excludes patients who received no ESA in month.



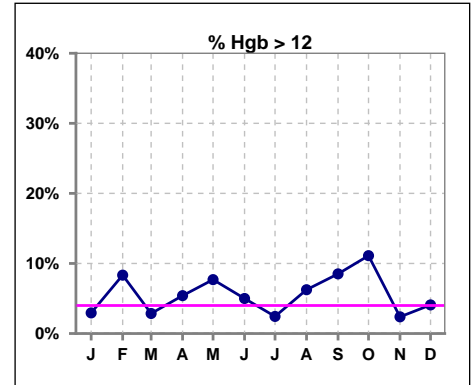
	Jan	Feb	Mar	Apr	May	Jun	Jul	Aug	Sep	Oct	Nov	Dec
# Hgb	34	36	35	37	39	40	41	48	47	45	42	49
# Hgb > 11	9	9	12	7	17	10	12	11	14	15	12	13
Pop. Mean	10.2	10.4	10.4	10.4	10.7	10.4	10.3	10.2	10.4	10.5	10.4	10.3
Std. Deviation	1.2	1.2	1.1	1.2	1.2	0.9	1.1	1.2	1.1	1.2	1.2	1.2
% Hgb > 11	26%	25%	34%	19%	44%	25%	29%	23%	30%	33%	29%	27%

Note: Excludes patients who received no ESA in month.



	Jan	Feb	Mar	Apr	May	Jun	Jul	Aug	Sep	Oct	Nov	Dec
# Hgb	34	36	35	37	39	40	41	48	47	45	42	49
# Hgb > 12	1	3	1	2	3	2	1	3	4	5	1	2
Pop. Mean	10.2	10.4	10.4	10.4	10.7	10.4	10.3	10.2	10.4	10.5	10.4	10.3
Std. Deviation	1.2	1.2	1.1	1.2	1.2	0.9	1.1	1.2	1.1	1.2	1.2	1.2
% Hgb > 12	3%	8%	3%	5%	8%	5%	2%	6%	9%	11%	2%	4%

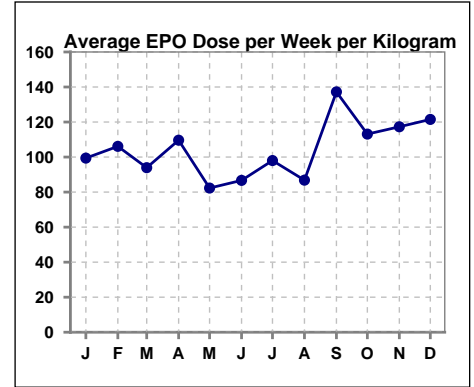
Note: Excludes patients who received no ESA in month.



V. ANEMIA - CONT.

Average EPO Dose per Week per Kilogram

	Jan	Feb	Mar	Apr	May	Jun	Jul	Aug	Sep	Oct	Nov	Dec
# Average EPO	99.4	106.1	93.9	109.6	82.3	86.7	98.0	86.8	137.2	113.1	117.3	121.5

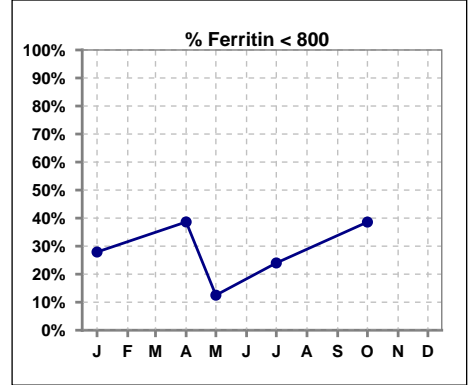


Methodology: a) All labs for 'Adequacy of Dialysis', 'Nutrition', 'Osteodystrophy', 'Anemia' and 'Diabetes' based on last value of month; b) BP's and #L processed are average of all values for month; c) Access data takes last access of month; d) Values for SGA and 'Infection Control' use most recent result.

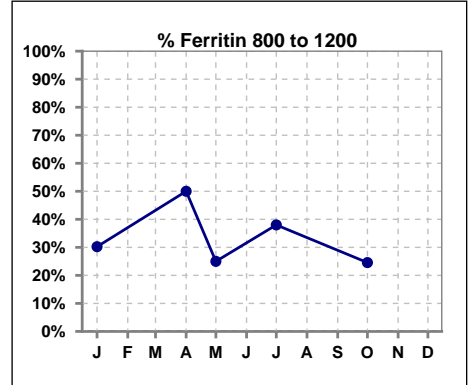
V. ANEMIA - CONT.

Iron Profile

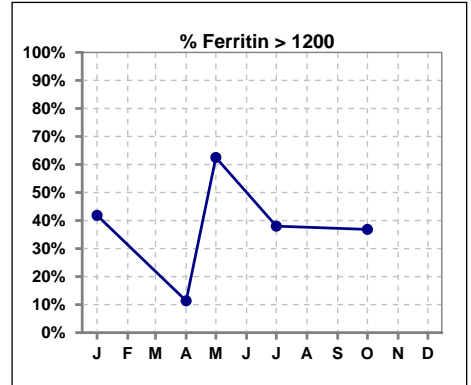
	Jan	Feb	Mar	Apr	May	Jun	Jul	Aug	Sep	Oct	Nov	Dec
# Ferritin	43			44	24		50			57		
# Ferritin < 800	12			17	3		12			22		
Pop. Mean	1114			876	1415		1101			1033		
Std. Deviation	568			353	583		478			551		
% Ferritin < 800	28%			39%	13%		24%			39%		



	Jan	Feb	Mar	Apr	May	Jun	Jul	Aug	Sep	Oct	Nov	Dec
# Ferritin	43			44	24		50			57		
# Ferritin 800 to 1200	13			22	6		19			14		
Pop. Mean	1114			876	1415		1101			1033		
Std. Deviation	568			353	583		478			551		
% Ferritin 800 to 1200	30%			50%	25%		38%			25%		

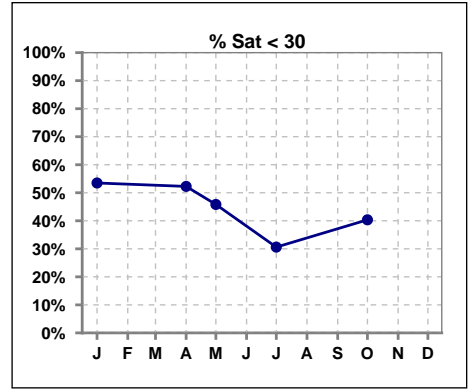


	Jan	Feb	Mar	Apr	May	Jun	Jul	Aug	Sep	Oct	Nov	Dec
# Ferritin	43			44	24		50			57		
# Ferritin > 1200	18			5	15		19			21		
Pop. Mean	1114			876	1415		1101			1033		
Std. Deviation	568			353	583		478			551		
% Ferritin > 1200	42%			11%	63%		38%			37%		

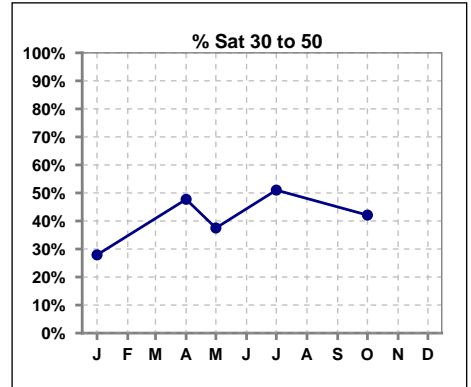


V. ANEMIA - CONT.

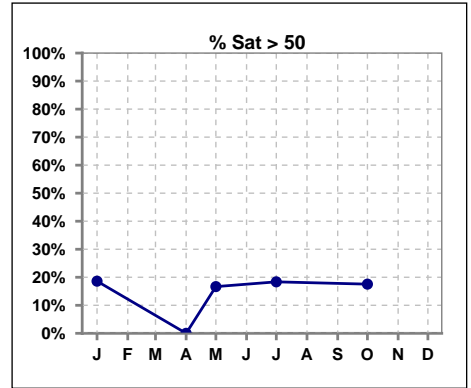
	Jan	Feb	Mar	Apr	May	Jun	Jul	Aug	Sep	Oct	Nov	Dec
# % Sat	43			44	24		49			57		
# % Sat < 30	23			23	11		15			23		
Pop. Mean	34			30	34		38			35		
Std. Deviation	18			11	20		17			18		
%% Sat < 30	53%			52%	46%		31%			40%		



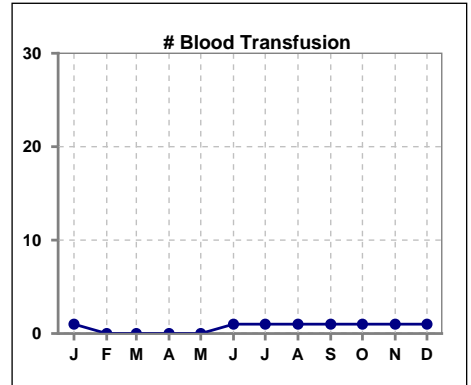
	Jan	Feb	Mar	Apr	May	Jun	Jul	Aug	Sep	Oct	Nov	Dec
# % Sat	43			44	24		49			57		
# % Sat 30 to 50	12			21	9		25			24		
Pop. Mean	34			30	34		38			35		
Std. Deviation	18			11	20		17			18		
%% Sat 30 to 50	28%			48%	38%		51%			42%		



	Jan	Feb	Mar	Apr	May	Jun	Jul	Aug	Sep	Oct	Nov	Dec
# % Sat	43			44	24		49			57		
# % Sat > 50	8			0	4		9			10		
Pop. Mean	34			30	34		38			35		
Std. Deviation	18			11	20		17			18		
%% Sat > 50	19%			0%	17%		18%			18%		



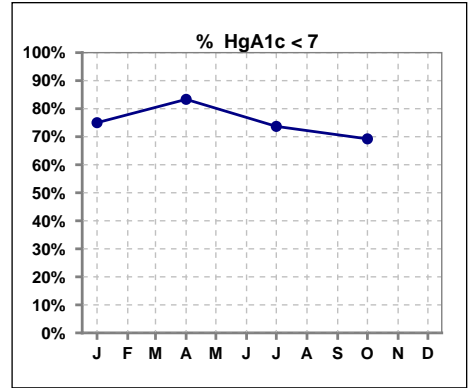
	Jan	Feb	Mar	Apr	May	Jun	Jul	Aug	Sep	Oct	Nov	Dec
# Patient	44	44	44	44	45	50	50	56	56	58	62	66
# Blood Transfusion	1	0	0	0	0	1	1	1	1	1	1	1



Methodology: a) All labs for 'Adequacy of Dialysis', 'Nutrition', 'Osteodystrophy', 'Anemia' and 'Diabetes' based on last value of month; b) BP's and #L processed are average of all values for month; c) Access data takes last access of month; d) Values for SGA and 'Infection Control' use most recent result.

VI. Diabetes

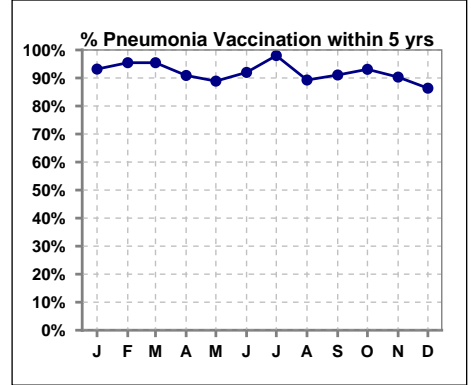
	Jan	Feb	Mar	Apr	May	Jun	Jul	Aug	Sep	Oct	Nov	Dec
# HgA1c	16			18			19			26		
# HgA1c < 7	12			15			14			18		
Pop. Mean	6.4			6.1			6.6			7.0		
Std. Deviation	1.51			1.25			1.50			2.17		
% HgA1c < 7	75%			83%			74%			69%		



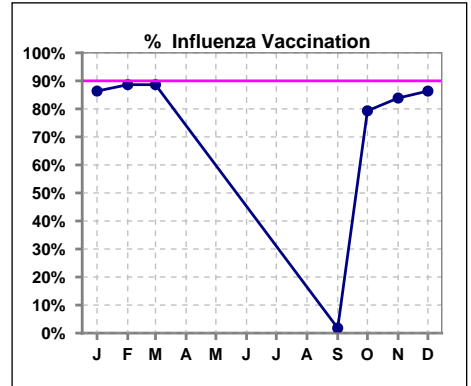
VII. Infection Control

Pneumonia vaccination within the past five years

	Jan	Feb	Mar	Apr	May	Jun	Jul	Aug	Sep	Oct	Nov	Dec
# Patient	44	44	44	44	45	50	50	56	56	58	62	66
# Pneumonia	41	42	42	40	40	46	49	50	51	54	56	57
% Pneumonia	93%	95%	95%	91%	89%	92%	98%	89%	91%	93%	90%	86%



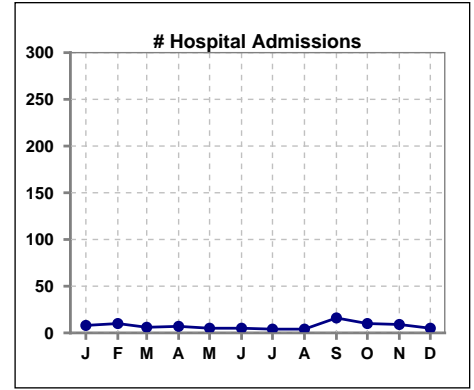
	Jan	Feb	Mar	Apr	May	Jun	Jul	Aug	Sep	Oct	Nov	Dec
# Patient	44	44	44						56	58	62	66
# Influenza	38	39	39						1	46	52	57
% Influenza	86%	89%	89%						2%	79%	84%	86%



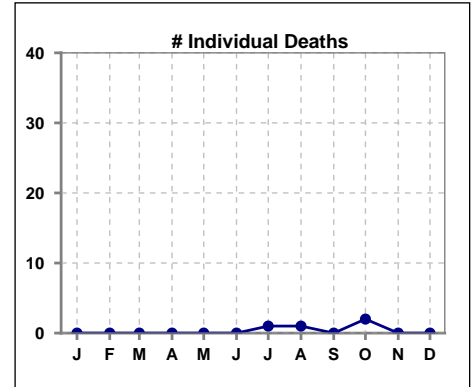
Methodology: a) All labs for 'Adequacy of Dialysis', 'Nutrition', 'Osteodystrophy', 'Anemia' and 'Diabetes' based on last value of month; b) BP's and #L processed are average of all values for month; c) Access data takes last access of month; d) Values for SGA and 'Infection Control' use most recent result.

VIII. Misc

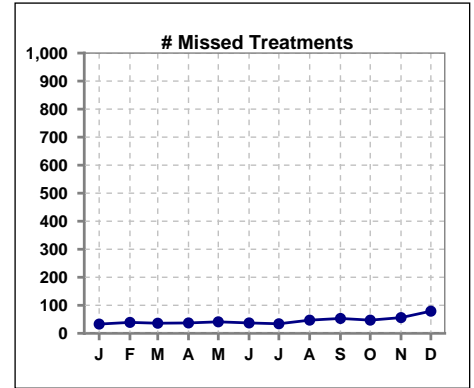
	Jan	Feb	Mar	Apr	May	Jun	Jul	Aug	Sep	Oct	Nov	Dec
# Patient	44	44	44	44	45	50	50	56	56	58	62	66
# Hospital Admissions	8	10	6	7	5	5	4	4	16	10	9	5



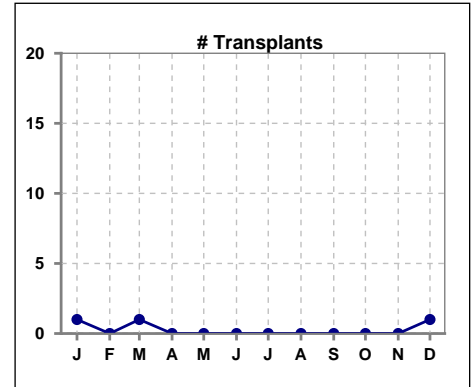
	Jan	Feb	Mar	Apr	May	Jun	Jul	Aug	Sep	Oct	Nov	Dec
# Patient	44	44	44	44	45	50	50	56	56	58	62	66
# Individual Deaths	0	0	0	0	0	0	1	1	0	2	0	0



	Jan	Feb	Mar	Apr	May	Jun	Jul	Aug	Sep	Oct	Nov	Dec
# Patient	44	44	44	44	45	50	50	56	56	58	62	66
# Missed Treatments	33	39	36	37	41	37	34	47	53	47	56	79



	Jan	Feb	Mar	Apr	May	Jun	Jul	Aug	Sep	Oct	Nov	Dec
# Patient	44	44	44	44	45	50	50	56	56	58	62	66
# Transplants	1	0	1	0	0	0	0	0	0	0	0	1



Methodology: a) All labs for 'Adequacy of Dialysis', 'Nutrition', 'Osteodystrophy', 'Anemia' and 'Diabetes' based on last value of month; b) BP's and #L processed are average of all values for month; c) Access data takes last access of month; d) Values for SGA and 'Infection Control' use most recent result.