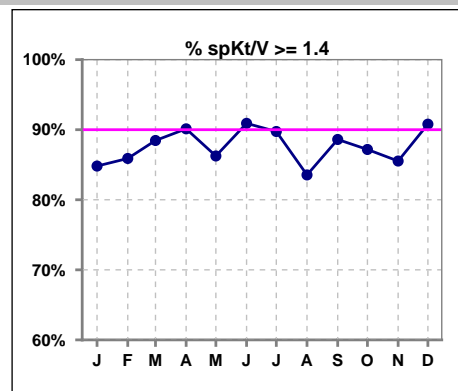
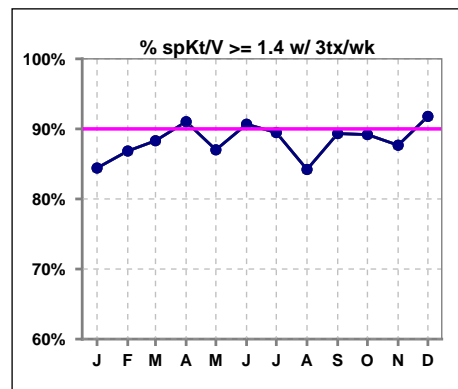


**I. ADEQUACY OF DIALYSIS**

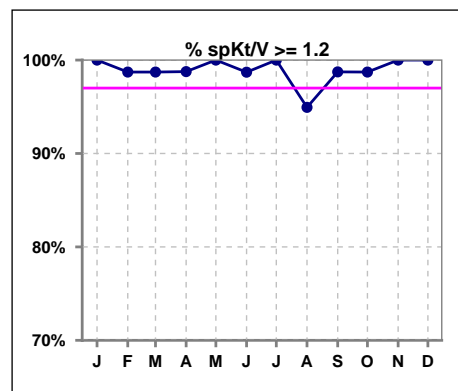
	Jan	Feb	Mar	Apr	May	Jun	Jul	Aug	Sep	Oct	Nov	Dec
# spKt/V	79	78	78	81	80	77	78	79	79	78	76	76
# spKt/V >= 1.4	67	67	69	73	69	70	70	66	70	68	65	69
Pop. Mean	1.64	1.67	1.71	1.69	1.69	1.71	1.71	1.66	1.66	1.70	1.71	1.72
Std. Deviation	0.23	0.29	0.29	0.30	0.30	0.24	0.25	0.31	0.24	0.29	0.26	0.28
% spKt/V >= 1.4	85%	86%	88%	90%	86%	91%	90%	84%	89%	87%	86%	91%



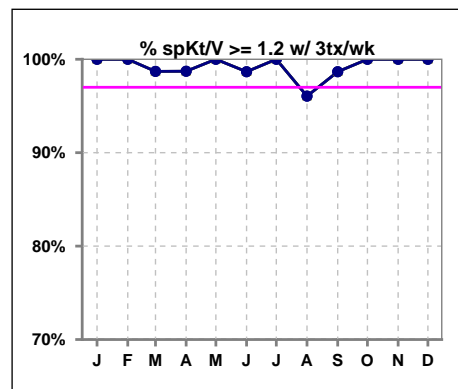
	Jan	Feb	Mar	Apr	May	Jun	Jul	Aug	Sep	Oct	Nov	Dec
# spKt/V w/ 3tx/wk	77	76	77	78	77	75	76	76	75	74	73	73
# spKt/V >= 1.4 w/3tx/wk	65	66	68	71	67	68	68	64	67	66	64	67
Pop. Mean	1.64	1.68	1.71	1.70	1.70	1.71	1.71	1.67	1.66	1.72	1.72	1.72
Std. Deviation	0.23	0.28	0.29	0.30	0.30	0.24	0.26	0.31	0.24	0.28	0.25	0.28
% >= 1.4 w/3tx/wk	84%	87%	88%	91%	87%	91%	89%	84%	89%	89%	88%	92%



	Jan	Feb	Mar	Apr	May	Jun	Jul	Aug	Sep	Oct	Nov	Dec
# spKt/V	79	78	78	81	80	77	78	79	79	78	76	76
# spKt/V >= 1.2	79	77	77	80	80	76	78	75	78	77	76	76
Pop. Mean	1.64	1.67	1.71	1.69	1.69	1.71	1.71	1.66	1.66	1.70	1.71	1.72
Std. Deviation	0.23	0.29	0.29	0.30	0.30	0.24	0.25	0.31	0.24	0.29	0.26	0.28
% spKt/V >= 1.2	100%	99%	99%	99%	100%	99%	100%	95%	99%	99%	100%	100%



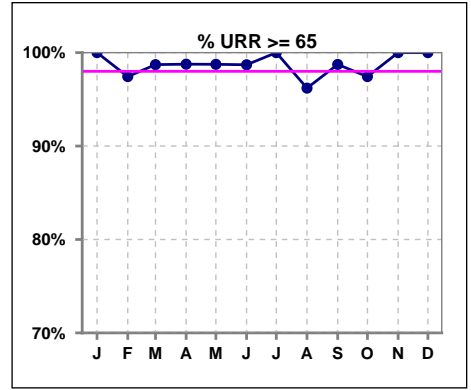
	Jan	Feb	Mar	Apr	May	Jun	Jul	Aug	Sep	Oct	Nov	Dec
# spKt/V w/ 3tx/wk	77	76	77	78	77	75	76	76	75	74	73	73
# spKt/V >= 1.2 w/3tx/wk	77	76	76	77	77	74	76	73	74	74	73	73
Pop. Mean	1.64	1.68	1.71	1.70	1.70	1.71	1.71	1.67	1.66	1.72	1.72	1.72
Std. Deviation	0.23	0.28	0.29	0.30	0.30	0.24	0.26	0.31	0.24	0.28	0.25	0.28
% >= 1.2 w/3tx/wk	100%	100%	99%	99%	100%	99%	100%	96%	99%	100%	100%	100%



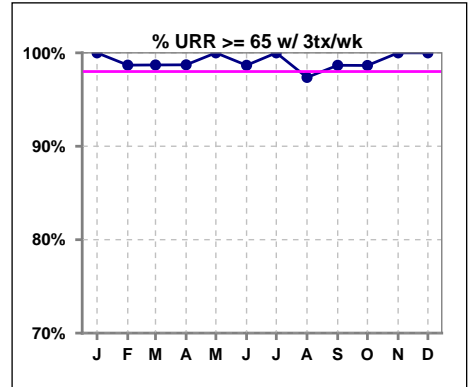
Methodology: a) All labs for 'Adequacy of Dialysis', 'Nutrition', 'Osteodystrophy', 'Anemia' and 'Diabetes' based on last value of month; b) BP's and #L processed are average of all values for month; c) Access data takes last access of month; d) Values for SGA and 'Infection Control' use most recent result.

**I. ADEQUACY OF DIALYSIS - CONT.**

	Jan	Feb	Mar	Apr	May	Jun	Jul	Aug	Sep	Oct	Nov	Dec
# URR	79	78	78	81	80	77	78	79	79	78	76	76
# URR >= 65	79	76	77	80	79	76	78	76	78	76	76	76
Pop. Mean	76	76	77	76	77	77	77	76	76	77	77	77
Std. Deviation	4.72	5.37	5.29	4.86	5.00	4.68	4.80	6.44	4.73	5.68	4.79	4.96
% URR >= 65	100%	97%	99%	99%	99%	99%	100%	96%	99%	97%	100%	100%



	Jan	Feb	Mar	Apr	May	Jun	Jul	Aug	Sep	Oct	Nov	Dec
# URR w/ 3tx/wk	77	76	77	78	77	75	76	76	75	74	73	73
# URR >=65 w/ 3tx/wk	77	75	76	77	77	74	76	74	74	73	73	73
Pop. Mean	76	76	77	76	77	77	77	76	76	77	77	77
Std. Deviation	4.76	4.99	5.33	4.79	4.88	4.70	4.86	6.26	4.73	5.03	4.50	4.89
% URR >=65 w/ 3tx/wk	100%	99%	99%	99%	100%	99%	100%	97%	99%	99%	100%	100%

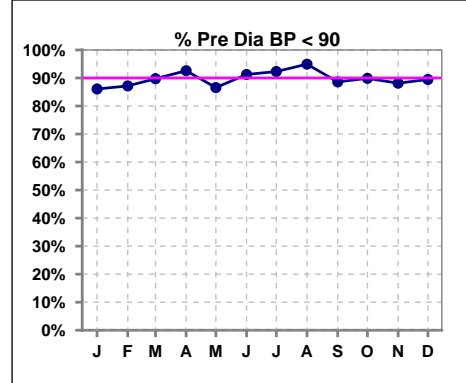


Methodology: a) All labs for 'Adequacy of Dialysis', 'Nutrition', 'Osteodystrophy', 'Anemia' and 'Diabetes' based on last value of month; b) BP's and #L processed are average of all values for month; c) Access data takes last access of month; d) Values for SGA and 'Infection Control' use most recent result.

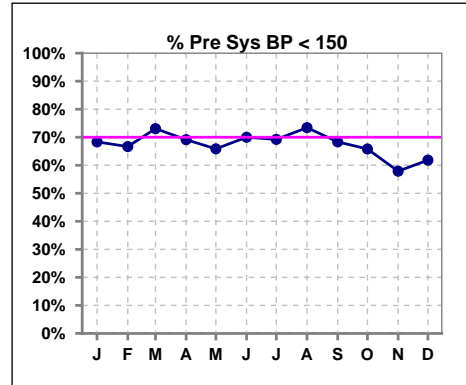
**I. ADEQUACY OF DIALYSIS - CONT.**

**Blood Pressure Control (Pre)**

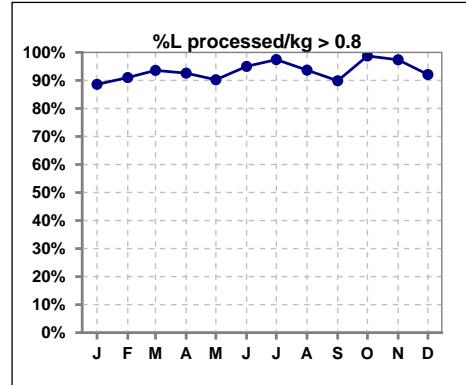
	Jan	Feb	Mar	Apr	May	Jun	Jul	Aug	Sep	Oct	Nov	Dec
# Pre Dia BP	79	78	78	81	82	80	78	79	79	79	76	76
# Pre Dia BP < 90	68	68	70	75	71	73	72	75	70	71	67	68
Pop. Mean	73	73	72	71	72	72	72	72	73	73	75	73
Std. Deviation	13.8	12.7	12.1	12.0	12.4	12.1	12.4	11.2	12.9	12.9	12.2	12.2
% Pre Dia BP < 90	86%	87%	90%	93%	87%	91%	92%	95%	89%	90%	88%	89%



	Jan	Feb	Mar	Apr	May	Jun	Jul	Aug	Sep	Oct	Nov	Dec
# Pre Sys BP	79	78	78	81	82	80	78	79	79	79	76	76
# Pre Sys BP < 150	54	52	57	56	54	56	54	58	54	52	44	47
Pop. Mean	140	141	139	138	139	137	138	137	140	140	144	141
Std. Deviation	20.6	21.7	21.1	20.9	21.0	20.3	20.6	21.0	21.3	20.5	19.9	19.9
%Pre Sys BP <150	68%	67%	73%	69%	66%	70%	69%	73%	68%	66%	58%	62%

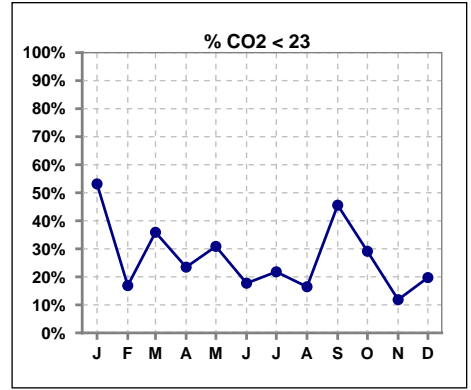


	Jan	Feb	Mar	Apr	May	Jun	Jul	Aug	Sep	Oct	Nov	Dec
# L processed/kg	79	78	78	81	82	80	78	79	79	79	76	76
# L processed/kg>0.8	70	71	73	75	74	76	76	74	71	78	74	70
Pop. Mean	1	1	1	1	1	1	1	1	1	1	1	1
Std. Deviation	0.2	0.2	0.2	0.3	0.3	0.3	0.3	0.3	0.3	0.3	0.2	0.3
% L processed/kg>0.8	89%	91%	94%	93%	90%	95%	97%	94%	90%	99%	97%	92%

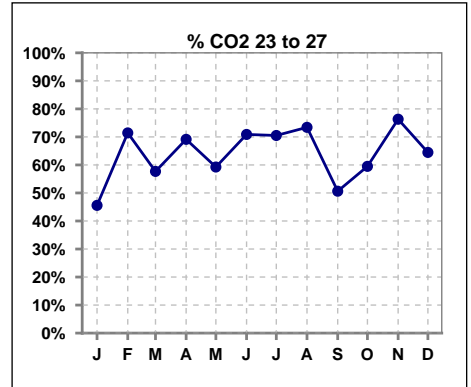


**I. ADEQUACY OF DIALYSIS - CONT.**

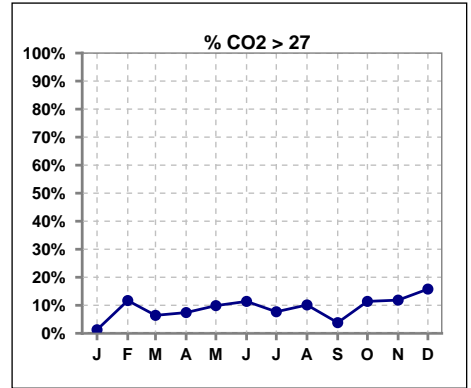
	Jan	Feb	Mar	Apr	May	Jun	Jul	Aug	Sep	Oct	Nov	Dec
# CO2	79	77	78	81	81	79	78	79	79	79	76	76
# CO2 < 23	42	13	28	19	25	14	17	13	36	23	9	15
Pop. Mean	22	25	23	24	24	25	24	25	23	24	25	25
Std. Deviation	2.52	2.27	2.71	2.58	3.23	2.41	2.97	2.52	2.87	2.80	2.51	2.32
% CO2 < 23	53%	17%	36%	23%	31%	18%	22%	16%	46%	29%	12%	20%



	Jan	Feb	Mar	Apr	May	Jun	Jul	Aug	Sep	Oct	Nov	Dec
# CO2	79	77	78	81	81	79	78	79	79	79	76	76
# CO2 23 to 27	36	55	45	56	48	56	55	58	40	47	58	49
Pop. Mean	22	25	23	24	24	25	24	25	23	24	25	25
Std. Deviation	2.52	2.27	2.71	2.58	3.23	2.41	2.97	2.52	2.87	2.80	2.51	2.32
% CO2 23 to 27	46%	71%	58%	69%	59%	71%	71%	73%	51%	59%	76%	64%



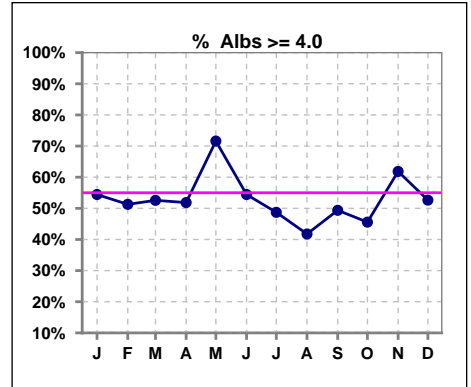
	Jan	Feb	Mar	Apr	May	Jun	Jul	Aug	Sep	Oct	Nov	Dec
# CO2	79	77	78	81	81	79	78	79	79	79	76	76
# CO2 > 27	1	9	5	6	8	9	6	8	3	9	9	12
Pop. Mean	22	25	23	24	24	25	24	25	23	24	25	25
Std. Deviation	2.52	2.27	2.71	2.58	3.23	2.41	2.97	2.52	2.87	2.80	2.51	2.32
% CO2 > 27	1%	12%	6%	7%	10%	11%	8%	10%	4%	11%	12%	16%



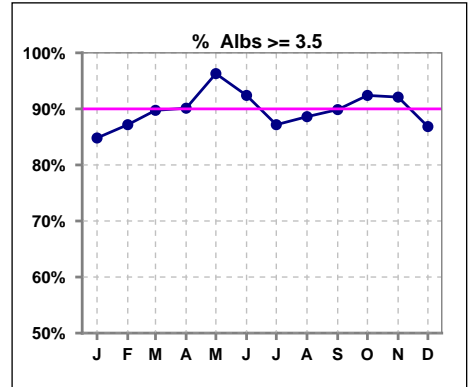
\*Albumin values use BCG method - as of July 2001

**II. NUTRITION**

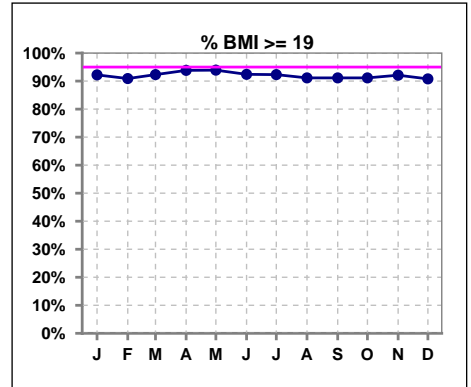
	Jan	Feb	Mar	Apr	May	Jun	Jul	Aug	Sep	Oct	Nov	Dec
# Albumin	79	78	78	81	81	79	78	79	79	79	76	76
# Albumin >= 4.0	43	40	41	42	58	43	38	33	39	36	47	40
Pop. Mean	3.9	3.9	3.9	3.9	4.1	3.9	3.9	3.9	3.9	3.9	4.0	3.9
Std. Deviation	0.40	0.45	0.38	0.37	0.29	0.36	0.39	0.39	0.41	0.34	0.39	0.38
% Alb >= 4.0	54%	51%	53%	52%	72%	54%	49%	42%	49%	46%	62%	53%



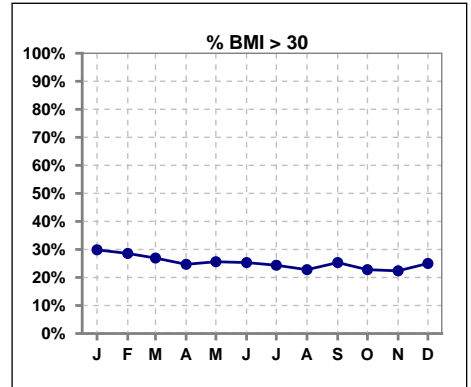
	Jan	Feb	Mar	Apr	May	Jun	Jul	Aug	Sep	Oct	Nov	Dec
# Albumin	79	78	78	81	81	79	78	79	79	79	76	76
# Albumin >= 3.5	67	68	70	73	78	73	68	70	71	73	70	66
Pop. Mean	3.9	3.9	3.9	3.9	4.1	3.9	3.9	3.9	3.9	3.9	4.0	3.9
Std. Deviation	0.40	0.45	0.38	0.37	0.29	0.36	0.39	0.39	0.41	0.34	0.39	0.38
% Alb >= 3.5	85%	87%	90%	90%	96%	92%	87%	89%	90%	92%	92%	87%



	Jan	Feb	Mar	Apr	May	Jun	Jul	Aug	Sep	Oct	Nov	Dec
# BMI	77	77	78	81	83	79	78	79	79	79	77	76
# BMI >= 19	71	70	72	76	77	73	72	72	72	72	70	69
Pop. Mean	35	35	37	37	37	37	37	36	36	36	36	37
Std. Deviation	69.4	69.3	89.7	88.7	89.2	90.9	90.7	82.1	81.5	84.4	85.5	85.6
% BMI >= 19	92%	91%	92%	94%	94%	92%	92%	91%	91%	91%	92%	91%



	Jan	Feb	Mar	Apr	May	Jun	Jul	Aug	Sep	Oct	Nov	Dec
# BMI	77	77	78	81	83	79	78	79	79	79	77	76
# BMI > 30	23	22	21	20	21	20	19	18	20	18	17	19
Pop. Mean	35	35	37	37	37	37	37	36	36	36	36	37
Std. Deviation	69.4	69.3	89.7	88.7	89.2	90.9	90.7	82.1	81.5	84.4	85.5	85.6
% BMI > 30	30%	29%	27%	25%	26%	25%	24%	23%	25%	23%	22%	25%

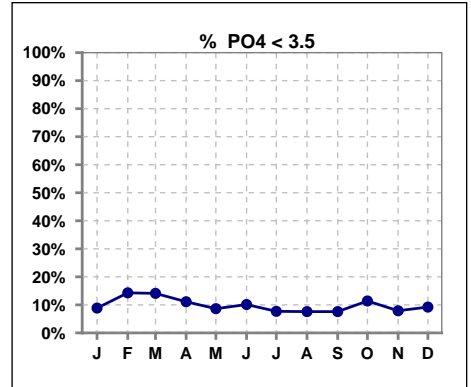


Methodology: a) All labs for 'Adequacy of Dialysis', 'Nutrition', 'Osteodystrophy', 'Anemia' and 'Diabetes' based on last value of month; b) BP's and #L processed are average of all values for month; c) Access data takes last access of month; d) Values for SGA and 'Infection Control' use most recent result.

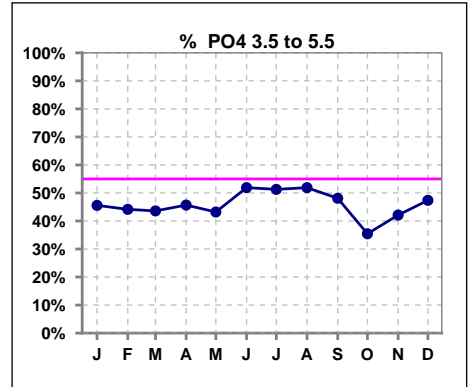
Lab methodology for PTH changed January 2012

**III. OSTEODYSTROPHY**

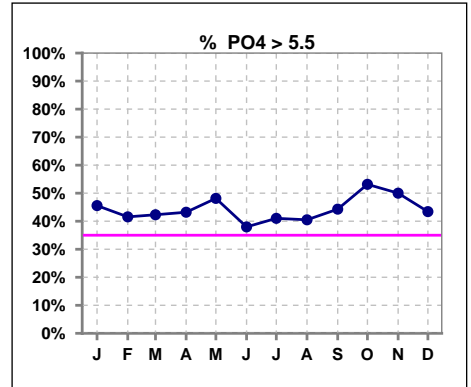
	Jan	Feb	Mar	Apr	May	Jun	Jul	Aug	Sep	Oct	Nov	Dec
# PO4	79	77	78	81	81	79	78	79	79	79	76	76
# PO4 < 3.5	7	11	11	9	7	8	6	6	6	9	6	7
Pop. Mean	5.5	5.3	5.4	5.6	5.7	5.4	5.5	5.6	5.6	5.6	5.8	5.6
Std. Deviation	1.73	2.02	1.80	2.23	1.87	1.76	1.70	1.82	1.89	1.79	1.75	1.80
% PO4 < 3.5	9%	14%	14%	11%	9%	10%	8%	8%	8%	11%	8%	9%



	Jan	Feb	Mar	Apr	May	Jun	Jul	Aug	Sep	Oct	Nov	Dec
# PO4	79	77	78	81	81	79	78	79	79	79	76	76
# PO4 3.5 to 5.5	36	34	34	37	35	41	40	41	38	28	32	36
Pop. Mean	5.5	5.3	5.4	5.6	5.7	5.4	5.5	5.6	5.6	5.6	5.8	5.6
Std. Deviation	1.73	2.02	1.80	2.23	1.87	1.76	1.70	1.82	1.89	1.79	1.75	1.80
% PO4 3.5 to 5.5	46%	44%	44%	46%	43%	52%	51%	52%	48%	35%	42%	47%



	Jan	Feb	Mar	Apr	May	Jun	Jul	Aug	Sep	Oct	Nov	Dec
# PO4	79	77	78	81	81	79	78	79	79	79	76	76
# PO4 > 5.5	36	32	33	35	39	30	32	32	35	42	38	33
Pop. Mean	5.5	5.3	5.4	5.6	5.7	5.4	5.5	5.6	5.6	5.6	5.8	5.6
Std. Deviation	1.73	2.02	1.80	2.23	1.87	1.76	1.70	1.82	1.89	1.79	1.75	1.80
% PO4 > 5.5	46%	42%	42%	43%	48%	38%	41%	41%	44%	53%	50%	43%

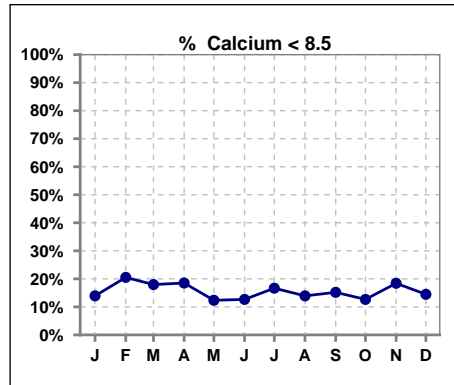


Methodology: a) All labs for 'Adequacy of Dialysis', 'Nutrition', 'Osteodystrophy', 'Anemia' and 'Diabetes' based on last value of month; b) BP's and #L processed are average of all values for month; c) Access data takes last access of month; d) Values for SGA and 'Infection Control' use most recent result.

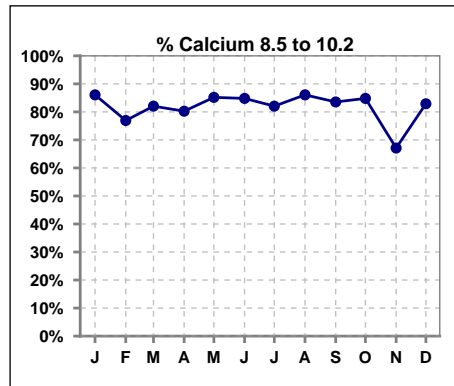
Lab methodology for PTH changed January 2012

**III. OSTEODYSTROPHY - CONT.**

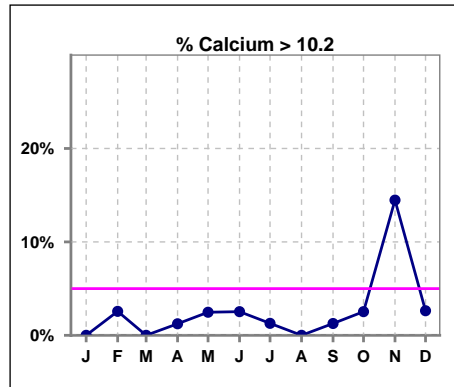
	Jan	Feb	Mar	Apr	May	Jun	Jul	Aug	Sep	Oct	Nov	Dec
# Calcium	79	78	78	81	81	79	78	79	79	79	76	76
# Calcium < 8.5	11	16	14	15	10	10	13	11	12	10	14	11
Pop. Mean	9.2	9.2	9.1	9.1	9.2	9.2	9.2	9.1	9.2	9.2	9.3	9.2
Std. Deviation	0.66	0.82	0.70	0.70	0.73	0.68	0.65	0.70	0.69	0.64	0.89	0.69
% Calcium < 8.5	14%	21%	18%	19%	12%	13%	17%	14%	15%	13%	18%	14%



	Jan	Feb	Mar	Apr	May	Jun	Jul	Aug	Sep	Oct	Nov	Dec
# Calcium	79	78	78	81	81	79	78	79	79	79	76	76
# Calcium 8.5 to 10.2	68	60	64	65	69	67	64	68	66	67	51	63
Pop. Mean	9.2	9.2	9.1	9.1	9.2	9.2	9.2	9.1	9.2	9.2	9.3	9.2
Std. Deviation	0.66	0.82	0.70	0.70	0.73	0.68	0.65	0.70	0.69	0.64	0.89	0.69
% Calcium 8.5 to 10.2	86%	77%	82%	80%	85%	85%	82%	86%	84%	85%	67%	83%



	Jan	Feb	Mar	Apr	May	Jun	Jul	Aug	Sep	Oct	Nov	Dec
# Calcium	79	78	78	81	81	79	78	79	79	79	76	76
# Calcium > 10.2	0	2	0	1	2	2	1	0	1	2	11	2
Pop. Mean	9.2	9.2	9.1	9.1	9.2	9.2	9.2	9.1	9.2	9.2	9.3	9.2
Std. Deviation	0.66	0.82	0.70	0.70	0.73	0.68	0.65	0.70	0.69	0.64	0.89	0.69
% Calcium > 10.2	0%	3%	0%	1%	2%	3%	1%	0%	1%	3%	14%	3%

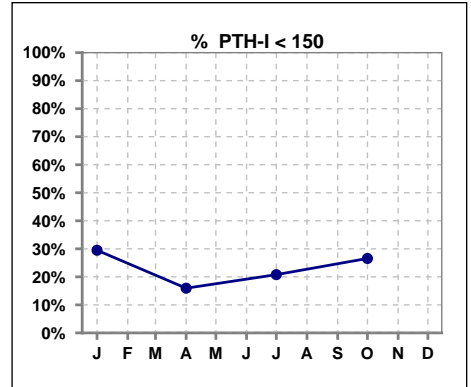


Methodology: a) All labs for 'Adequacy of Dialysis', 'Nutrition', 'Osteodystrophy', 'Anemia' and 'Diabetes' based on last value of month; b) BP's and #L processed are average of all values for month; c) Access data takes last access of month; d) Values for SGA and 'Infection Control' use most recent result.

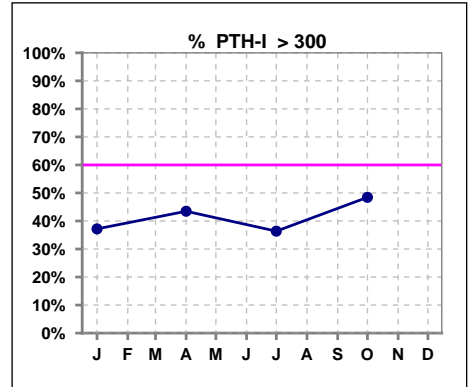
Lab methodology for PTH changed January 2012

**III. OSTEODYSTROPHY - CONT.**

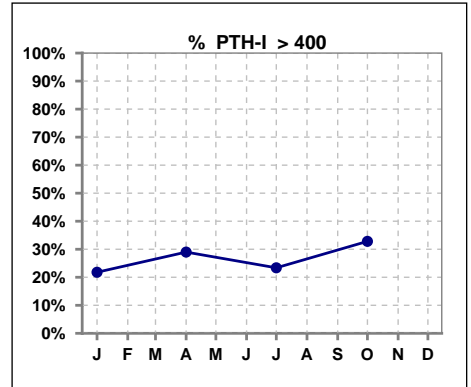
	Jan	Feb	Mar	Apr	May	Jun	Jul	Aug	Sep	Oct	Nov	Dec
# PTH-I	78			69			77			64		
# PTH-I < 150	23			11			16			17		
Pop. Mean	270			340			303			323		
Std. Deviation	197			242			223			237		
<b>% PTH-I &lt; 150</b>	<b>29%</b>			<b>16%</b>			<b>21%</b>			<b>27%</b>		



	Jan	Feb	Mar	Apr	May	Jun	Jul	Aug	Sep	Oct	Nov	Dec
# PTH-I	78			69			77			64		
# PTH-I > 300	29			30			28			31		
Pop. Mean	270			340			303			323		
Std. Deviation	197			242			223			237		
<b>% PTH-I &gt; 300</b>	<b>37%</b>			<b>43%</b>			<b>36%</b>			<b>48%</b>		



	Jan	Feb	Mar	Apr	May	Jun	Jul	Aug	Sep	Oct	Nov	Dec
# PTH-I	78			69			77			64		
# PTH-I > 400	17			20			18			21		
Pop. Mean	270			340			303			323		
Std. Deviation	197			242			223			237		
<b>% PTH-I &gt; 400</b>	<b>22%</b>			<b>29%</b>			<b>23%</b>			<b>33%</b>		

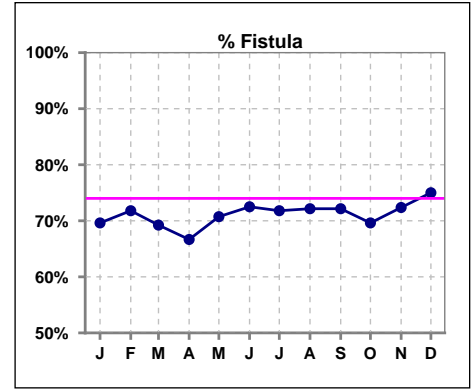


Methodology: a) All labs for 'Adequacy of Dialysis', 'Nutrition', 'Osteodystrophy', 'Anemia' and 'Diabetes' based on last value of month; b) BP's and #L processed are average of all values for month; c) Access data takes last access of month; d) Values for SGA and 'Infection Control' use most recent result.

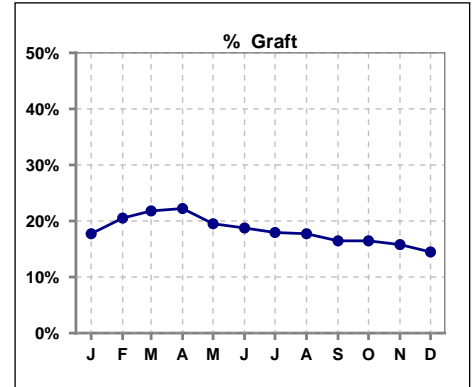


**IV. ACCESS**

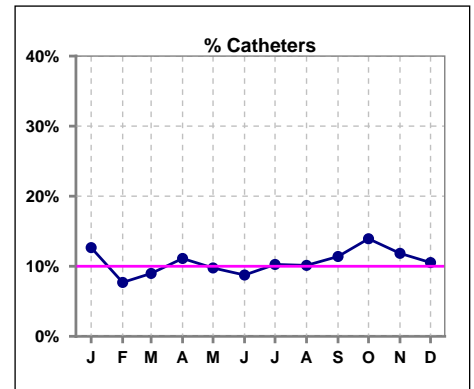
	Jan	Feb	Mar	Apr	May	Jun	Jul	Aug	Sep	Oct	Nov	Dec
<b># Access</b>	79	78	78	81	82	80	78	79	79	79	76	76
<b># Fistula</b>	55	56	54	54	58	58	56	57	57	55	55	57
<b>% Fistula</b>	70%	72%	69%	67%	71%	73%	72%	72%	72%	70%	72%	75%



	Jan	Feb	Mar	Apr	May	Jun	Jul	Aug	Sep	Oct	Nov	Dec
<b># Access</b>	79	78	78	81	82	80	78	79	79	79	76	76
<b># Graft</b>	14	16	17	18	16	15	14	14	13	13	12	11
<b>% Graft</b>	18%	21%	22%	22%	20%	19%	18%	18%	16%	16%	16%	14%



	Jan	Feb	Mar	Apr	May	Jun	Jul	Aug	Sep	Oct	Nov	Dec
<b># Access</b>	79	78	78	81	82	80	78	79	79	79	76	76
<b># Catheters</b>	10	6	7	9	8	7	8	8	9	11	9	8
<b>% Catheters</b>	13%	8%	9%	11%	10%	9%	10%	10%	11%	14%	12%	11%

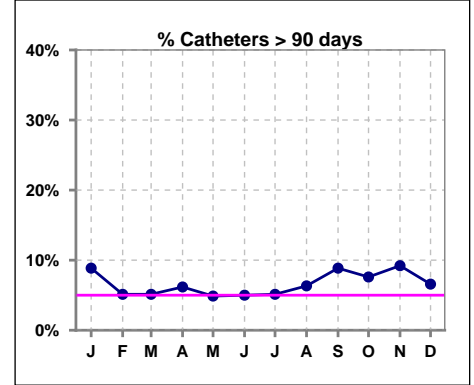


**IV. ACCESS - CONT.**

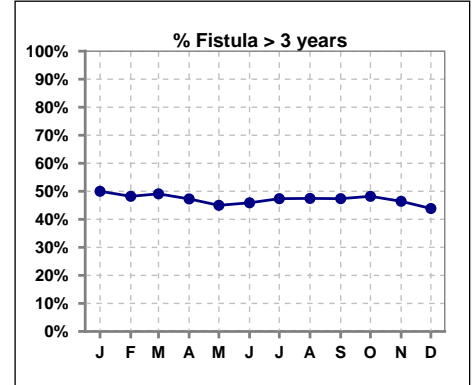
**Catheters > 90 days**

	Jan	Feb	Mar	Apr	May	Jun	Jul	Aug	Sep	Oct	Nov	Dec
# Access	79	78	78	81	82	80	78	79	79	79	76	76
# Catheters	7	4	4	5	4	4	4	5	7	6	7	5
<b>% Catheters</b>	<b>9%</b>	<b>5%</b>	<b>5%</b>	<b>6%</b>	<b>5%</b>	<b>5%</b>	<b>5%</b>	<b>6%</b>	<b>9%</b>	<b>8%</b>	<b>9%</b>	<b>7%</b>

Definition: Catheter in use on last treatment of the month



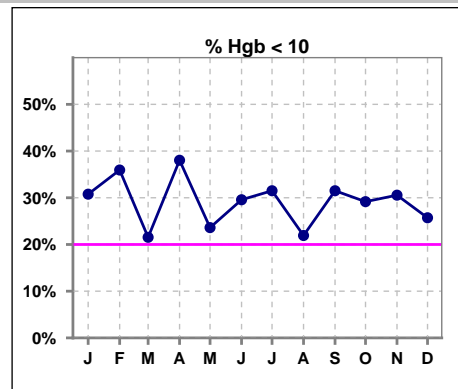
	Jan	Feb	Mar	Apr	May	Jun	Jul	Aug	Sep	Oct	Nov	Dec
# Fistula	54	56	55	55	60	61	57	59	57	56	56	57
# Fistula > 3 yrs	27	27	27	26	27	28	27	28	27	27	26	25
<b>% Fistula &gt; 3 yrs</b>	<b>50%</b>	<b>48%</b>	<b>49%</b>	<b>47%</b>	<b>45%</b>	<b>46%</b>	<b>47%</b>	<b>47%</b>	<b>47%</b>	<b>48%</b>	<b>46%</b>	<b>44%</b>



**V. ANEMIA**

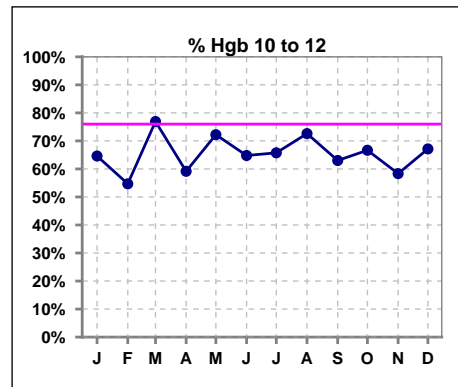
	Jan	Feb	Mar	Apr	May	Jun	Jul	Aug	Sep	Oct	Nov	Dec
# Hgb	65	64	65	71	72	71	73	73	73	72	72	70
# Hgb < 10	20	23	14	27	17	21	23	16	23	21	22	18
Pop. Mean	10.3	10.4	10.5	10.4	10.6	10.4	10.4	10.6	10.4	10.5	10.6	10.5
Std. Deviation	1.0	1.1	1.0	1.1	0.9	1.0	0.8	1.1	1.2	1.0	1.2	1.0
% Hgb < 10	31%	36%	22%	38%	24%	30%	32%	22%	32%	29%	31%	26%

Note: Excludes patients who received no ESA in month.



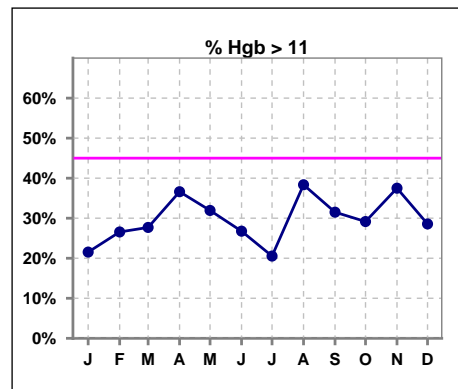
	Jan	Feb	Mar	Apr	May	Jun	Jul	Aug	Sep	Oct	Nov	Dec
# Hgb	65	64	65	71	72	71	73	73	73	72	72	70
# Hgb 10 to 12	42	35	50	42	52	46	48	53	46	48	42	47
Pop. Mean	10.3	10.4	10.5	10.4	10.6	10.4	10.4	10.6	10.4	10.5	10.6	10.5
Std. Deviation	1.0	1.1	1.0	1.1	0.9	1.0	0.8	1.1	1.2	1.0	1.2	1.0
% Hgb 10 to 12	65%	55%	77%	59%	72%	65%	66%	73%	63%	67%	58%	67%

Note: Excludes patients who received no ESA in month.



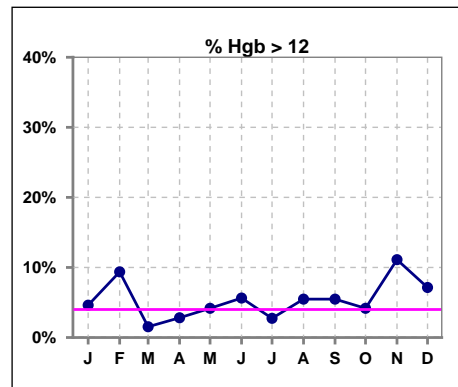
	Jan	Feb	Mar	Apr	May	Jun	Jul	Aug	Sep	Oct	Nov	Dec
# Hgb	65	64	65	71	72	71	73	73	73	72	72	70
# Hgb > 11	14	17	18	26	23	19	15	28	23	21	27	20
Pop. Mean	10.3	10.4	10.5	10.4	10.6	10.4	10.4	10.6	10.4	10.5	10.6	10.5
Std. Deviation	1.0	1.1	1.0	1.1	0.9	1.0	0.8	1.1	1.2	1.0	1.2	1.0
% Hgb > 11	22%	27%	28%	37%	32%	27%	21%	38%	32%	29%	38%	29%

Note: Excludes patients who received no ESA in month.



	Jan	Feb	Mar	Apr	May	Jun	Jul	Aug	Sep	Oct	Nov	Dec
# Hgb	65	64	65	71	72	71	73	73	73	72	72	70
# Hgb > 12	3	6	1	2	3	4	2	4	4	3	8	5
Pop. Mean	10.3	10.4	10.5	10.4	10.6	10.4	10.4	10.6	10.4	10.5	10.6	10.5
Std. Deviation	1.0	1.1	1.0	1.1	0.9	1.0	0.8	1.1	1.2	1.0	1.2	1.0
% Hgb > 12	5%	9%	2%	3%	4%	6%	3%	5%	5%	4%	11%	7%

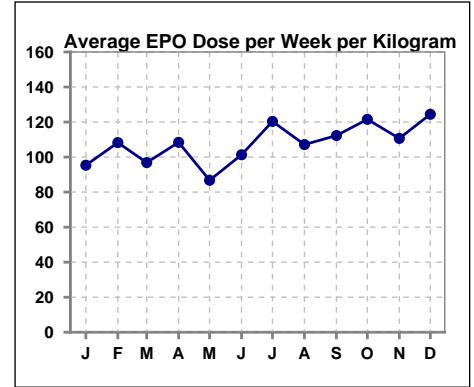
Note: Excludes patients who received no ESA in month.



**V. ANEMIA - CONT.**

Average EPO Dose per Week per Kilogram

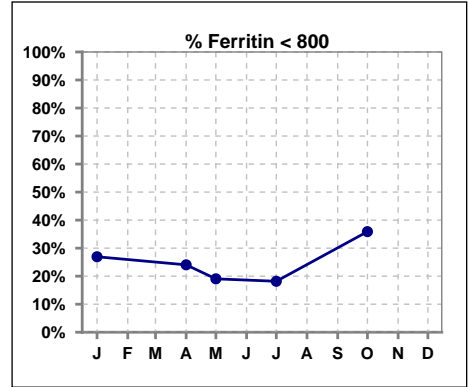
	Jan	Feb	Mar	Apr	May	Jun	Jul	Aug	Sep	Oct	Nov	Dec
# Average EPO	95.3	108.3	96.8	108.4	86.8	101.3	120.3	107.1	112.3	121.5	110.7	124.4



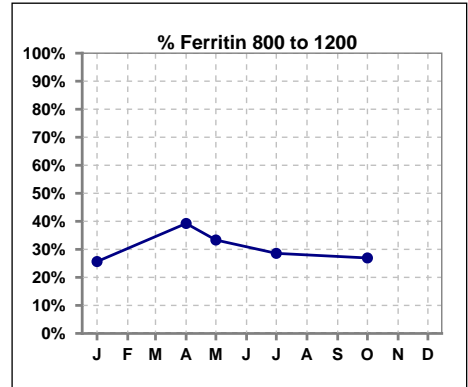
**V. ANEMIA - CONT.**

**Iron Profile**

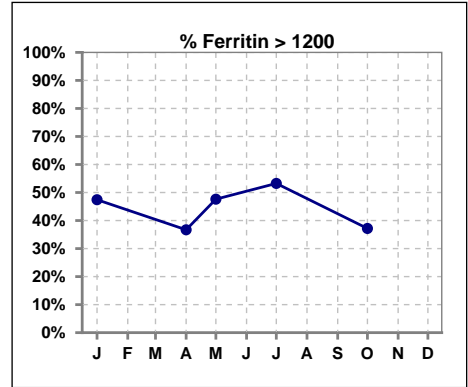
	Jan	Feb	Mar	Apr	May	Jun	Jul	Aug	Sep	Oct	Nov	Dec
# Ferritin	78			79	21		77			78		
# Ferritin < 800	21			19	4		14			28		
Pop. Mean	1179			1059	1117		1221			995		
Std. Deviation	543			472	528		514			468		
<b>% Ferritin &lt; 800</b>	<b>27%</b>			<b>24%</b>	<b>19%</b>		<b>18%</b>			<b>36%</b>		



	Jan	Feb	Mar	Apr	May	Jun	Jul	Aug	Sep	Oct	Nov	Dec
# Ferritin	78			79	21		77			78		
# Ferritin 800 to 1200	20			31	7		22			21		
Pop. Mean	1179			1059	1117		1221			995		
Std. Deviation	543			472	528		514			468		
<b>% Ferritin 800 to 1200</b>	<b>26%</b>			<b>39%</b>	<b>33%</b>		<b>29%</b>			<b>27%</b>		

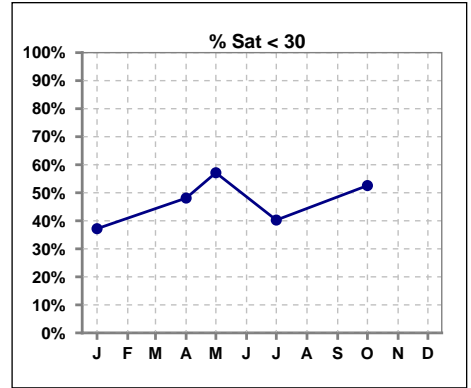


	Jan	Feb	Mar	Apr	May	Jun	Jul	Aug	Sep	Oct	Nov	Dec
# Ferritin	78			79	21		77			78		
# Ferritin > 1200	37			29	10		41			29		
Pop. Mean	1179			1059	1117		1221			995		
Std. Deviation	543			472	528		514			468		
<b>% Ferritin &gt; 1200</b>	<b>47%</b>			<b>37%</b>	<b>48%</b>		<b>53%</b>			<b>37%</b>		

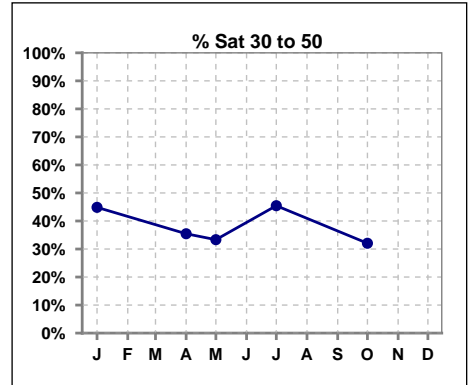


**V. ANEMIA - CONT.**

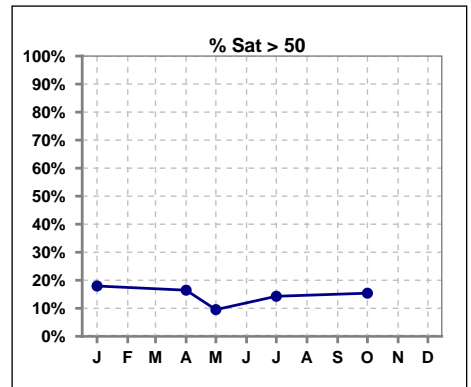
	Jan	Feb	Mar	Apr	May	Jun	Jul	Aug	Sep	Oct	Nov	Dec
# % Sat	78			79	21		77			78		
# % Sat < 30	29			38	12		31			41		
Pop. Mean	38			35	30		36			35		
Std. Deviation	21			19	16		16			22		
<b>% % Sat &lt; 30</b>	<b>37%</b>			<b>48%</b>	<b>57%</b>		<b>40%</b>			<b>53%</b>		



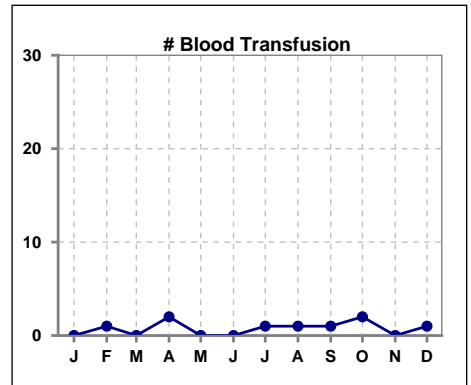
	Jan	Feb	Mar	Apr	May	Jun	Jul	Aug	Sep	Oct	Nov	Dec
# % Sat	78			79	21		77			78		
# % Sat 30 to 50	35			28	7		35			25		
Pop. Mean	38			35	30		36			35		
Std. Deviation	21			19	16		16			22		
<b>% % Sat 30 to 50</b>	<b>45%</b>			<b>35%</b>	<b>33%</b>		<b>45%</b>			<b>32%</b>		



	Jan	Feb	Mar	Apr	May	Jun	Jul	Aug	Sep	Oct	Nov	Dec
# % Sat	78			79	21		77			78		
# % Sat > 50	14			13	2		11			12		
Pop. Mean	38			35	30		36			35		
Std. Deviation	21			19	16		16			22		
<b>% % Sat &gt; 50</b>	<b>18%</b>			<b>16%</b>	<b>10%</b>		<b>14%</b>			<b>15%</b>		



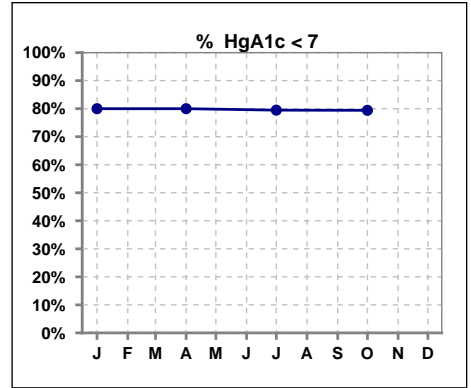
	Jan	Feb	Mar	Apr	May	Jun	Jul	Aug	Sep	Oct	Nov	Dec
# Patient	77	79	78	81	83	80	78	79	79	79	77	76
# Blood Transfusion	0	1	0	2	0	0	1	1	1	2	0	1



Methodology: a) All labs for 'Adequacy of Dialysis', 'Nutrition', 'Osteodystrophy', 'Anemia' and 'Diabetes' based on last value of month; b) BP's and #L processed are average of all values for month; c) Access data takes last access of month; d) Values for SGA and 'Infection Control' use most recent result.

**VI. Diabetes**

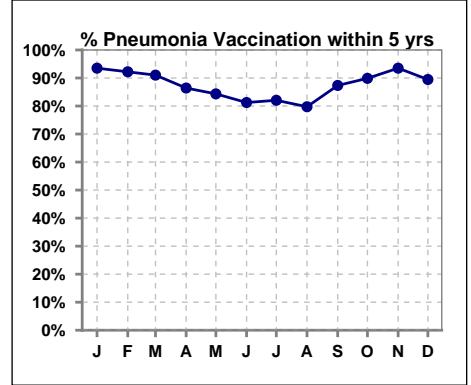
	Jan	Feb	Mar	Apr	May	Jun	Jul	Aug	Sep	Oct	Nov	Dec
# HgA1c	35			40			39			34		
# HgA1c < 7	28			32			31			27		
Pop. Mean	6.2			6.2			6.2			6.3		
Std. Deviation	1.01			1.14			0.93			0.97		
<b>% HgA1c &lt; 7</b>	<b>80%</b>			<b>80%</b>			<b>79%</b>			<b>79%</b>		



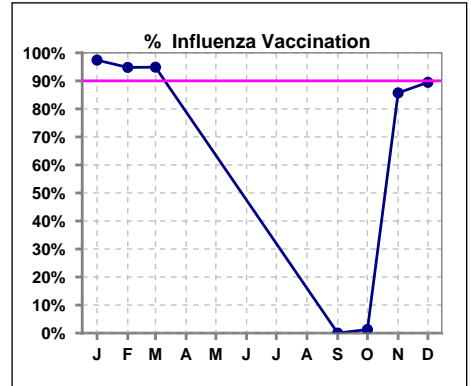
**VII. Infection Control**

**Pneumonia vaccination within the past five years**

	Jan	Feb	Mar	Apr	May	Jun	Jul	Aug	Sep	Oct	Nov	Dec
# Patient	77	77	78	81	83	80	78	79	79	79	77	76
# Pneumonia	72	71	71	70	70	65	64	63	69	71	72	68
% Pneumonia	94%	92%	91%	86%	84%	81%	82%	80%	87%	90%	94%	89%



	Jan	Feb	Mar	Apr	May	Jun	Jul	Aug	Sep	Oct	Nov	Dec
# Patient	77	77	78						79	79	77	76
# Influenza	75	73	74						0	1	66	68
% Influenza	97%	95%	95%						0%	1%	86%	89%

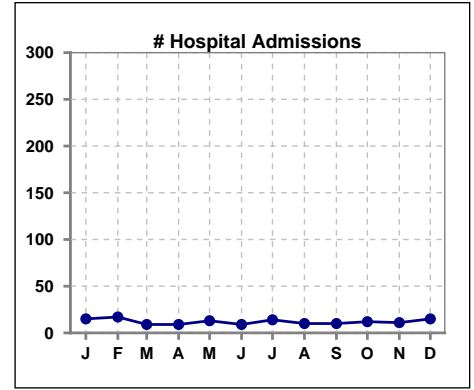


Methodology: a) All labs for 'Adequacy of Dialysis', 'Nutrition', 'Osteodystrophy', 'Anemia' and 'Diabetes' based on last value of month; b) BP's and #L processed are average of all values for month; c) Access data takes last access of month; d) Values for SGA and 'Infection Control' use most recent result.

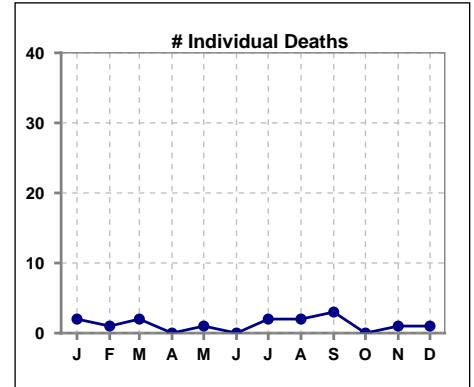


**VIII. Misc**

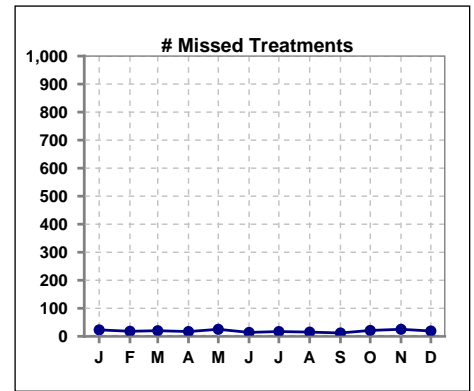
	Jan	Feb	Mar	Apr	May	Jun	Jul	Aug	Sep	Oct	Nov	Dec
<b># Patient</b>	77	79	78	81	83	80	78	79	79	79	77	76
<b># Hospital Admissions</b>	15	17	9	9	13	9	14	10	10	12	11	15



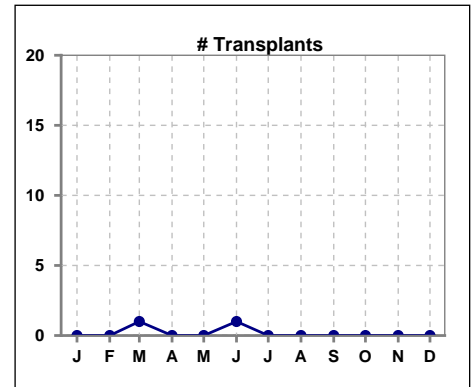
	Jan	Feb	Mar	Apr	May	Jun	Jul	Aug	Sep	Oct	Nov	Dec
<b># Patient</b>	77	79	78	81	83	80	78	79	79	79	77	76
<b># Individual Deaths</b>	2	1	2	0	1	0	2	2	3	0	1	1



	Jan	Feb	Mar	Apr	May	Jun	Jul	Aug	Sep	Oct	Nov	Dec
<b># Patient</b>	77	79	78	81	83	80	78	79	79	79	77	76
<b># Missed Treatments</b>	23	18	20	17	25	14	17	15	12	21	25	19



	Jan	Feb	Mar	Apr	May	Jun	Jul	Aug	Sep	Oct	Nov	Dec
<b># Patient</b>	77	79	78	81	83	80	78	79	79	79	77	76
<b># Transplants</b>	0	0	1	0	0	1	0	0	0	0	0	0



Methodology: a) All labs for 'Adequacy of Dialysis', 'Nutrition', 'Osteodystrophy', 'Anemia' and 'Diabetes' based on last value of month; b) BP's and #L processed are average of all values for month; c) Access data takes last access of month; d) Values for SGA and 'Infection Control' use most recent result.