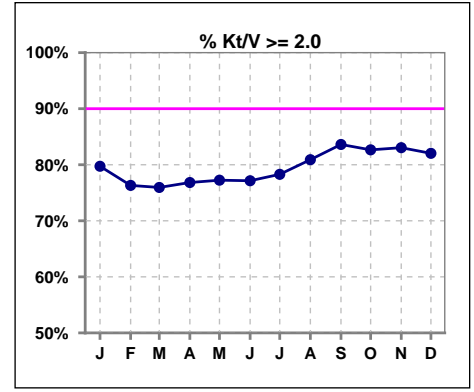
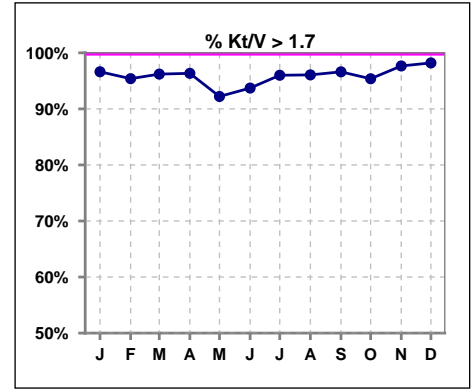


I. ADEQUACY OF DIALYSIS

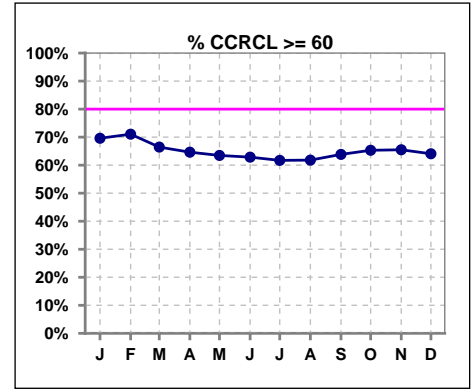
	Jan	Feb	Mar	Apr	May	Jun	Jul	Aug	Sep	Oct	Nov	Dec
# Kt/V - CA/CC PD	148	152	158	164	167	175	175	178	177	173	171	167
# Kt/V >= 2.0	118	116	120	126	129	135	137	144	148	143	142	137
Pop. Mean	2.46	2.46	2.41	2.41	2.37	2.38	2.39	2.37	2.41	2.41	2.43	2.41
Std. Deviation	0.63	0.63	0.60	0.61	0.60	0.58	0.55	0.51	0.54	0.53	0.53	0.52
% Kt/V >= 2.0	80%	76%	76%	77%	77%	77%	78%	81%	84%	83%	83%	82%



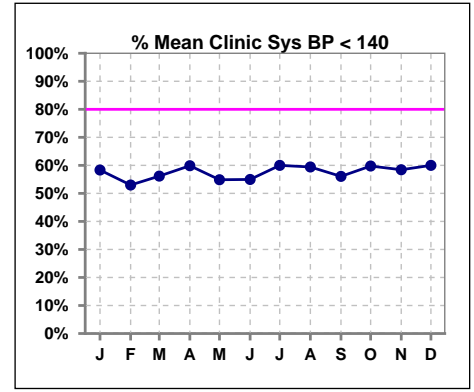
	Jan	Feb	Mar	Apr	May	Jun	Jul	Aug	Sep	Oct	Nov	Dec
# Kt/V - CA/CC PD	148	152	158	164	167	175	175	178	177	173	171	167
# Kt/V >= 1.7	143	145	152	158	154	164	168	171	171	165	167	164
Pop. Mean	2.46	2.46	2.41	2.41	2.37	2.38	2.39	2.37	2.41	2.41	2.43	2.41
Std. Deviation	0.63	0.63	0.60	0.61	0.60	0.58	0.55	0.51	0.54	0.53	0.53	0.52
% Kt/V >= 1.7	97%	95%	96%	96%	92%	94%	96%	96%	97%	95%	98%	98%



	Jan	Feb	Mar	Apr	May	Jun	Jul	Aug	Sep	Oct	Nov	Dec
# CRCL CA/CC PD	148	152	158	164	167	175	175	178	177	173	171	167
# CCRCL >= 60	103	108	105	106	106	110	108	110	113	113	112	107
Pop. Mean	85.41	86.45	83.82	83.25	81.97	81.61	81.09	79.70	81.19	81.24	82.36	81.25
Std. Deviation	38.48	39.19	37.78	37.82	37.71	36.74	35.89	33.35	34.54	34.81	36.51	36.49
% CCRCL >= 60	70%	71%	66%	65%	63%	63%	62%	62%	64%	65%	65%	64%



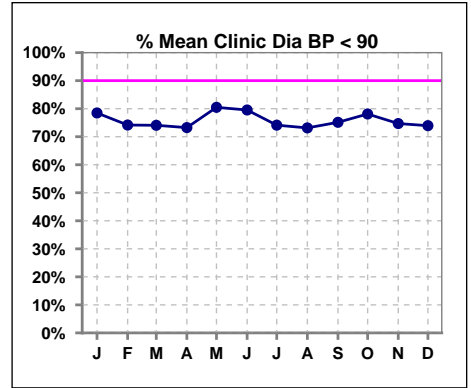
	Jan	Feb	Mar	Apr	May	Jun	Jul	Aug	Sep	Oct	Nov	Dec
# Mean Clinic Sys BP	144	151	162	157	164	171	170	175	173	169	166	165
# Sys BP < 140	84	80	91	94	90	94	102	104	97	101	97	99
Pop. Mean	134	136	136	134	136	135	137	136	135	135	138	136
Std. Deviation	25.3	25.9	27.1	26.7	25.1	26.0	48.2	24.7	26.4	26.0	24.6	25.6
% Sys BP <140	58%	53%	56%	60%	55%	55%	60%	59%	56%	60%	58%	60%



Methodology: a) Kt/V, CRCL and nPNa values are 4 month rolling mean of last value for each month, all other report lab results are based on last value of month; b) BP's are average of all values for month.

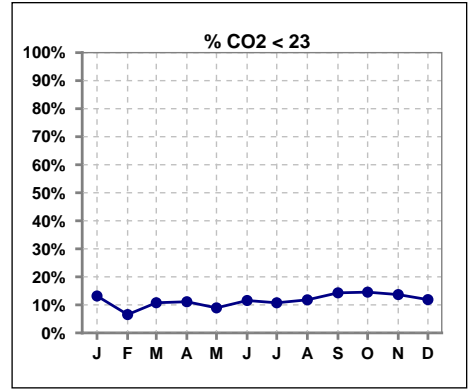
I. ADEQUACY OF DIALYSIS - CONT.

	Jan	Feb	Mar	Apr	May	Jun	Jul	Aug	Sep	Oct	Nov	Dec
# Mean Clinic Dia BP	144	151	162	157	164	171	170	175	173	169	166	165
# Dia BP < 90	113	112	120	115	132	136	126	128	130	132	124	122
Pop. Mean	79	78	78	78	78	78	79	80	79	79	82	80
Std. Deviation	14.7	15.9	15.6	16.2	14.7	14.9	18.2	15.5	14.6	14.5	29.1	14.5
% Dia BP < 90	78%	74%	74%	73%	80%	80%	74%	73%	75%	78%	75%	74%

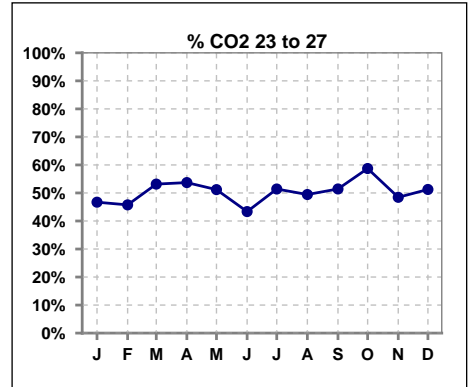


I. ADEQUACY OF DIALYSIS - CONT.

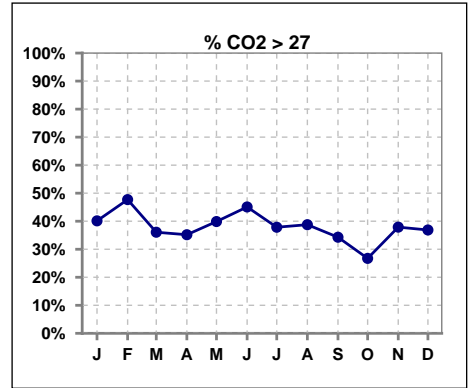
	Jan	Feb	Mar	Apr	May	Jun	Jul	Aug	Sep	Oct	Nov	Dec
# CO2	152	153	158	162	168	173	177	178	175	172	161	160
# CO2 < 23	20	10	17	18	15	20	19	21	25	25	22	19
Pop. Mean	27	27	26	26	27	26	26	26	26	26	26	26
Std. Deviation	3.30	2.94	2.98	3.10	2.90	3.24	3.16	3.23	3.39	2.94	3.64	3.54
% CO2 < 23	13%	7%	11%	11%	9%	12%	11%	12%	14%	15%	14%	12%



	Jan	Feb	Mar	Apr	May	Jun	Jul	Aug	Sep	Oct	Nov	Dec
# CO2	152	153	158	162	168	173	177	178	175	172	161	160
# CO2 23 to 27	71	70	84	87	86	75	91	88	90	101	78	82
Pop. Mean	27	27	26	26	27	26	26	26	26	26	26	26
Std. Deviation	3.30	2.94	2.98	3.10	2.90	3.24	3.16	3.23	3.39	2.94	3.64	3.54
% CO2 23 to 27	47%	46%	53%	54%	51%	43%	51%	49%	51%	59%	48%	51%



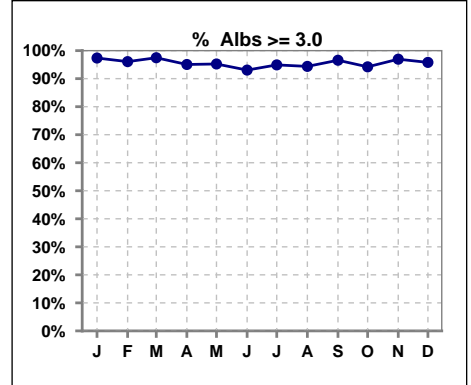
	Jan	Feb	Mar	Apr	May	Jun	Jul	Aug	Sep	Oct	Nov	Dec
# CO2	152	153	158	162	168	173	177	178	175	172	161	160
# CO2 > 27	61	73	57	57	67	78	67	69	60	46	61	59
Pop. Mean	27	27	26	26	27	26	26	26	26	26	26	26
Std. Deviation	3.30	2.94	2.98	3.10	2.90	3.24	3.16	3.23	3.39	2.94	3.64	3.54
% CO2 > 27	40%	48%	36%	35%	40%	45%	38%	39%	34%	27%	38%	37%



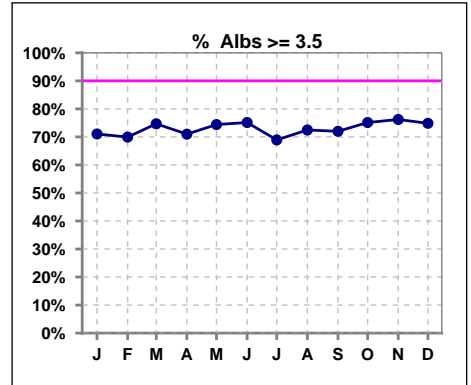
*Albumin values use BCG method - as of July 2001

II. NUTRITION

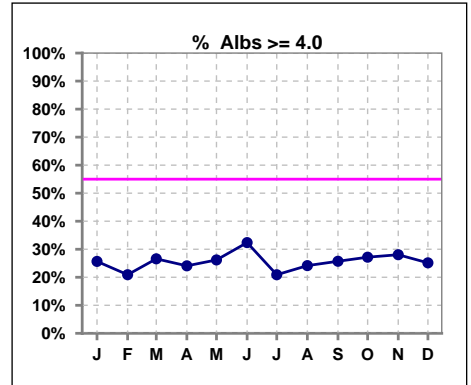
	Jan	Feb	Mar	Apr	May	Jun	Jul	Aug	Sep	Oct	Nov	Dec
# Albumin	152	153	158	162	168	173	177	178	175	173	164	167
# Albumin >= 3.0	148	147	154	154	160	161	168	168	169	163	159	160
Pop. Mean	3.7	3.7	3.7	3.7	3.7	3.7	3.6	3.7	3.7	3.7	3.7	3.7
Std. Deviation	0.43	0.42	0.39	0.41	0.41	0.45	0.38	0.41	0.41	0.44	0.44	0.45
% Alb >= 3.0	97%	96%	97%	95%	95%	93%	95%	94%	97%	94%	97%	96%



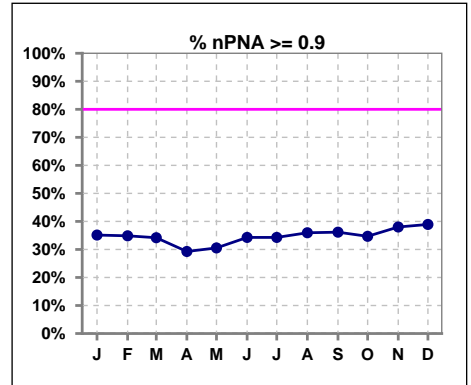
	Jan	Feb	Mar	Apr	May	Jun	Jul	Aug	Sep	Oct	Nov	Dec
# Albumin	152	153	158	162	168	173	177	178	175	173	164	167
# Albumin >= 3.5	108	107	118	115	125	130	122	129	126	130	125	125
Pop. Mean	3.7	3.7	3.7	3.7	3.7	3.7	3.6	3.7	3.7	3.7	3.7	3.7
Std. Deviation	0.43	0.42	0.39	0.41	0.41	0.45	0.38	0.41	0.41	0.44	0.44	0.45
% Alb >= 3.5	71%	70%	75%	71%	74%	75%	69%	72%	72%	75%	76%	75%



	Jan	Feb	Mar	Apr	May	Jun	Jul	Aug	Sep	Oct	Nov	Dec
# Albumin	152	153	158	162	168	173	177	178	175	173	164	167
# Albumin >= 4.0	39	32	42	39	44	56	37	43	45	47	46	42
Pop. Mean	3.7	3.7	3.7	3.7	3.7	3.7	3.6	3.7	3.7	3.7	3.7	3.7
Std. Deviation	0.43	0.42	0.39	0.41	0.41	0.45	0.38	0.41	0.41	0.44	0.44	0.45
% Alb >= 4.0	26%	21%	27%	24%	26%	32%	21%	24%	26%	27%	28%	25%



	Jan	Feb	Mar	Apr	May	Jun	Jul	Aug	Sep	Oct	Nov	Dec
# nPNA	148	152	158	164	167	175	175	178	177	173	171	167
# nPNA >= 0.9	52	53	54	48	51	60	60	64	64	60	65	65
Pop. Mean	0.8	0.8	0.8	0.8	0.8	0.8	0.8	0.8	0.8	0.8	0.9	0.9
Std. Deviation	0.25	0.25	0.26	0.26	0.25	0.25	0.25	0.24	0.25	0.24	0.25	0.25
% nPNA >= 0.9	35%	35%	34%	29%	31%	34%	34%	36%	36%	35%	38%	39%

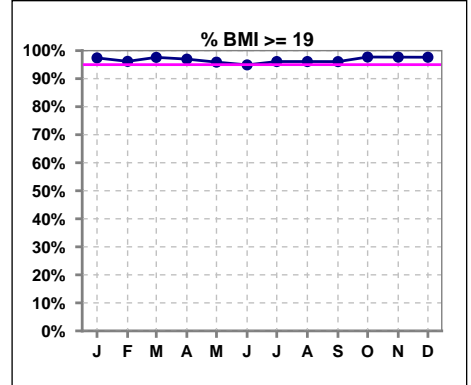


Methodology: a) KtV, CRCL and nPNa values are 4 month rolling mean of last value for each month, all other report lab results are based on last value of month; b) BP's are average of all values for month.

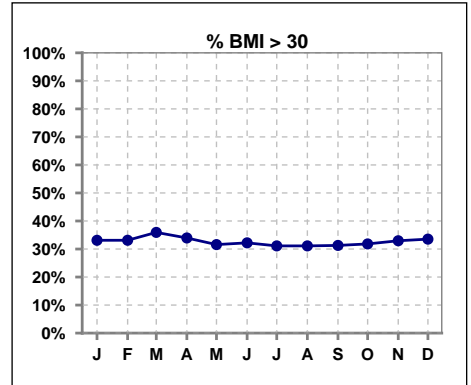
*Albumin values use BCG method - as of July 2001

II. NUTRITION - CONT.

	Jan	Feb	Mar	Apr	May	Jun	Jul	Aug	Sep	Oct	Nov	Dec
# BMI	154	157	167	165	171	177	180	180	179	176	173	170
# BMI >= 19	150	151	163	160	164	168	173	173	172	172	169	166
Pop. Mean	29	29	29	28	28	28	28	28	28	29	29	29
Std. Deviation	6.3	6.2	6.5	6.5	7.1	7.5	7.4	7.3	7.6	7.1	10.6	10.0
% BMI >= 19	97%	96%	98%	97%	96%	95%	96%	96%	96%	98%	98%	98%



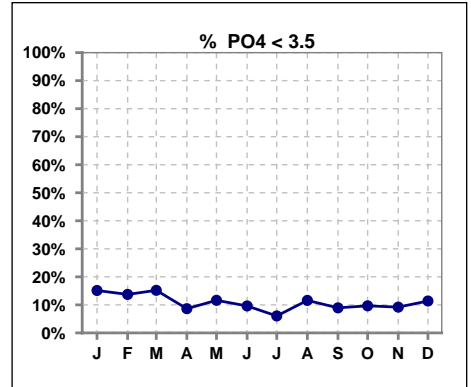
	Jan	Feb	Mar	Apr	May	Jun	Jul	Aug	Sep	Oct	Nov	Dec
# BMI	154	157	167	165	171	177	180	180	179	176	173	170
# BMI > 30	51	52	60	56	54	57	56	56	56	56	57	57
Pop. Mean	29	29	29	28	28	28	28	28	28	29	29	29
Std. Deviation	6.3	6.2	6.5	6.5	7.1	7.5	7.4	7.3	7.6	7.1	10.6	10.0
% BMI > 30	33%	33%	36%	34%	32%	32%	31%	31%	31%	32%	33%	34%



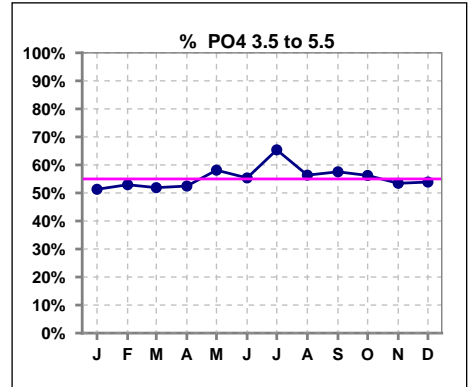
Lab methodology for PTH changed January 2012

III. OSTEODYSTROPHY

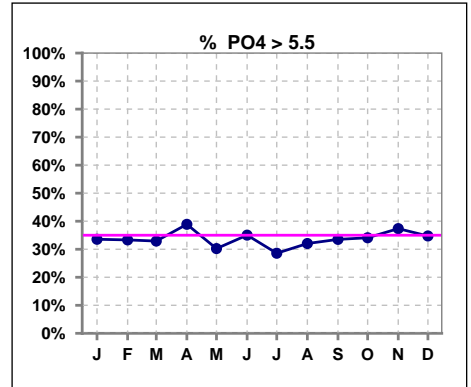
	Jan	Feb	Mar	Apr	May	Jun	Jul	Aug	Sep	Oct	Nov	Dec
# PO4	152	153	158	162	172	177	182	181	179	176	174	167
# PO4 < 3.5	23	21	24	14	20	17	11	21	16	17	16	19
Pop. Mean	5.1	5.1	5.0	5.3	5.1	5.2	5.2	5.1	5.2	5.1	5.2	5.1
Std. Deviation	1.62	1.70	1.60	1.77	1.58	1.75	1.56	1.53	1.62	1.56	1.57	1.51
% PO4 < 3.5	15%	14%	15%	9%	12%	10%	6%	12%	9%	10%	9%	11%



	Jan	Feb	Mar	Apr	May	Jun	Jul	Aug	Sep	Oct	Nov	Dec
# PO4	152	153	158	162	172	177	182	181	179	176	174	167
# PO4 3.5 to 5.5	78	81	82	85	100	98	119	102	103	99	93	90
Pop. Mean	5.1	5.1	5.0	5.3	5.1	5.2	5.2	5.1	5.2	5.1	5.2	5.1
Std. Deviation	1.62	1.70	1.60	1.77	1.58	1.75	1.56	1.53	1.62	1.56	1.57	1.51
% PO4 3.5 to 5.5	51%	53%	52%	52%	58%	55%	65%	56%	58%	56%	53%	54%



	Jan	Feb	Mar	Apr	May	Jun	Jul	Aug	Sep	Oct	Nov	Dec
# PO4	152	153	158	162	172	177	182	181	179	176	174	167
# PO4 > 5.5	51	51	52	63	52	62	52	58	60	60	65	58
Pop. Mean	5.1	5.1	5.0	5.3	5.1	5.2	5.2	5.1	5.2	5.1	5.2	5.1
Std. Deviation	1.62	1.70	1.60	1.77	1.58	1.75	1.56	1.53	1.62	1.56	1.57	1.51
% PO4 > 5.5	34%	33%	33%	39%	30%	35%	29%	32%	34%	34%	37%	35%

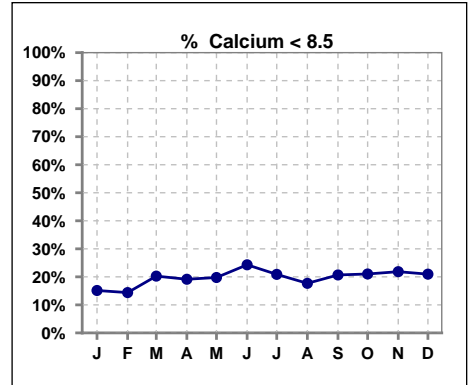


Methodology: a) Kt/V, CRCL and nPNa values are 4 month rolling mean of last value for each month, all other report lab results are based on last value of month; b) BP's are average of all values for month.

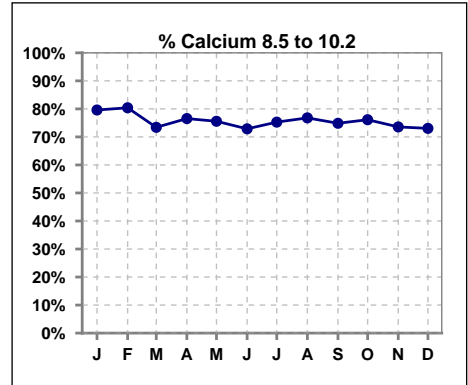
Lab methodology for PTH changed January 2012

III. OSTEODYSTROPHY - CONT.

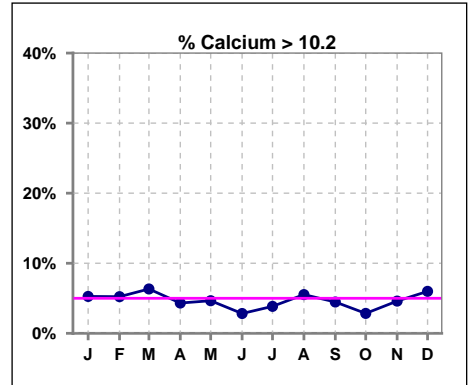
	Jan	Feb	Mar	Apr	May	Jun	Jul	Aug	Sep	Oct	Nov	Dec
# Calcium	152	153	158	162	172	177	182	181	179	176	174	167
# Calcium < 8.5	23	22	32	31	34	43	38	32	37	37	38	35
Pop. Mean	9.1	9.0	9.1	9.0	9.0	8.9	8.9	9.0	9.0	9.0	9.0	9.0
Std. Deviation	0.80	0.77	0.74	0.82	0.78	0.77	0.75	0.86	0.76	0.75	0.77	0.73
% Calcium < 8.5	15%	14%	20%	19%	20%	24%	21%	18%	21%	21%	22%	21%



	Jan	Feb	Mar	Apr	May	Jun	Jul	Aug	Sep	Oct	Nov	Dec
# Calcium	152	153	158	162	172	177	182	181	179	176	174	167
# Calcium 8.5 to 10.2	121	123	116	124	130	129	137	139	134	134	128	122
Pop. Mean	9.1	9.0	9.1	9.0	9.0	8.9	8.9	9.0	9.0	9.0	9.0	9.0
Std. Deviation	0.80	0.77	0.74	0.82	0.78	0.77	0.75	0.86	0.76	0.75	0.77	0.73
% Calcium 8.5 to 10.2	80%	80%	73%	77%	76%	73%	75%	77%	75%	76%	74%	73%



	Jan	Feb	Mar	Apr	May	Jun	Jul	Aug	Sep	Oct	Nov	Dec
# Calcium	152	153	158	162	172	177	182	181	179	176	174	167
# Calcium > 10.2	8	8	10	7	8	5	7	10	8	5	8	10
Pop. Mean	9.1	9.0	9.1	9.0	9.0	8.9	8.9	9.0	9.0	9.0	9.0	9.0
Std. Deviation	0.80	0.77	0.74	0.82	0.78	0.77	0.75	0.86	0.76	0.75	0.77	0.73
% Calcium > 10.2	5%	5%	6%	4%	5%	3%	4%	6%	4%	3%	5%	6%

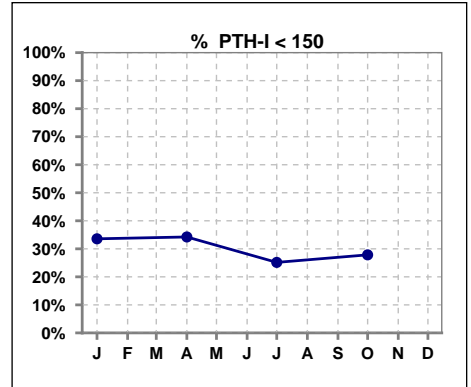


Methodology: a) Kt/V, CRCL and nPNa values are 4 month rolling mean of last value for each month, all other report lab results are based on last value of month; b) BP's are average of all values for month.

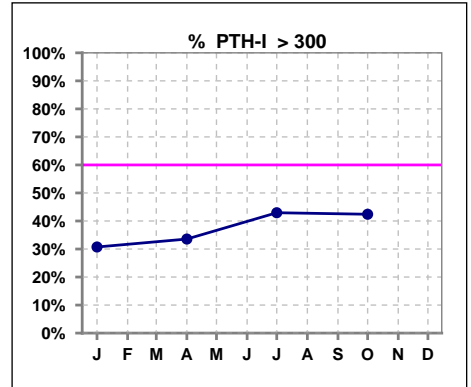
Lab methodology for PTH changed January 2012

III. OSTEODYSTROPHY - CONT.

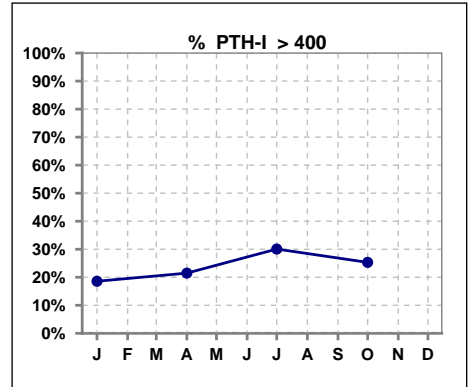
	Jan	Feb	Mar	Apr	May	Jun	Jul	Aug	Sep	Oct	Nov	Dec
# PTH-I	140			149			163			158		
# PTH-I < 150	47			51			41			44		
Pop. Mean	267			309			332			341		
Std. Deviation	223			322			289			352		
% PTH-I < 150	34%			34%			25%			28%		



	Jan	Feb	Mar	Apr	May	Jun	Jul	Aug	Sep	Oct	Nov	Dec
# PTH-I	140			149			163			158		
# PTH-I > 300	43			50			70			67		
Pop. Mean	267			309			332			341		
Std. Deviation	223			322			289			352		
% PTH-I > 300	31%			34%			43%			42%		

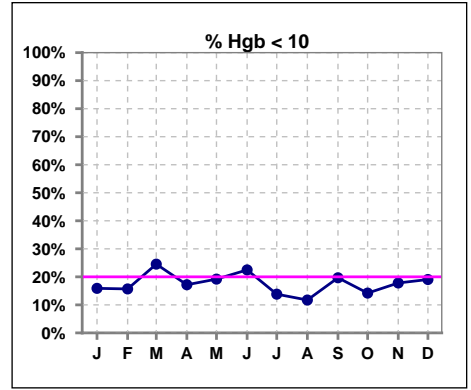


	Jan	Feb	Mar	Apr	May	Jun	Jul	Aug	Sep	Oct	Nov	Dec
# PTH-I	140			149			163			158		
# PTH-I > 400	26			32			49			40		
Pop. Mean	267			309			332			341		
Std. Deviation	223			322			289			352		
% PTH-I > 400	19%			21%			30%			25%		

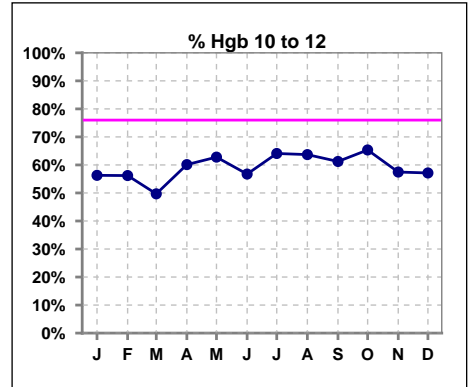


IV. ANEMIA

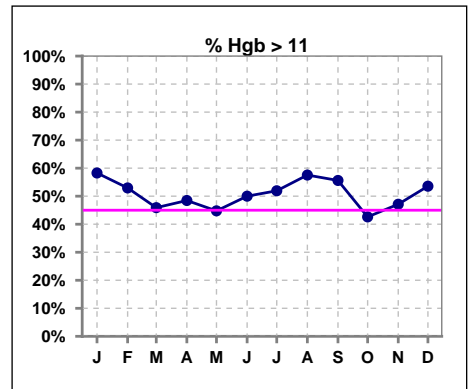
	Jan	Feb	Mar	Apr	May	Jun	Jul	Aug	Sep	Oct	Nov	Dec
# Hgb	151	153	159	163	172	178	181	179	178	176	174	168
# Hgb < 10	24	24	39	28	33	40	25	21	35	25	31	32
Pop. Mean	11.3	11.2	11.1	11.2	11.0	11.0	11.2	11.3	11.1	11.1	11.2	11.2
Std. Deviation	1.4	1.5	1.5	1.5	1.5	1.5	1.4	1.4	1.6	1.4	1.6	1.7
% Hgb < 10	16%	16%	25%	17%	19%	22%	14%	12%	20%	14%	18%	19%



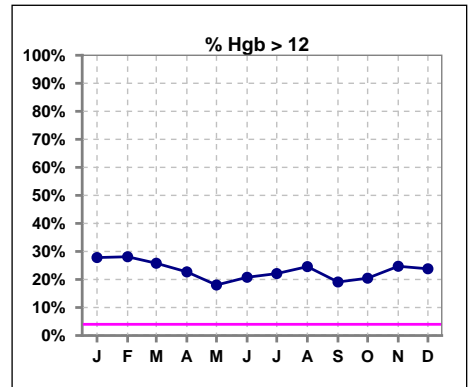
	Jan	Feb	Mar	Apr	May	Jun	Jul	Aug	Sep	Oct	Nov	Dec
# Hgb	151	153	159	163	172	178	181	179	178	176	174	168
# Hgb 10 to 12	85	86	79	98	108	101	116	114	109	115	100	96
Pop. Mean	11.3	11.2	11.1	11.2	11.0	11.0	11.2	11.3	11.1	11.1	11.2	11.2
Std. Deviation	1.4	1.5	1.5	1.5	1.5	1.5	1.4	1.4	1.6	1.4	1.6	1.7
% Hgb 10 to 12	56%	56%	50%	60%	63%	57%	64%	64%	61%	65%	57%	57%



	Jan	Feb	Mar	Apr	May	Jun	Jul	Aug	Sep	Oct	Nov	Dec
# Hgb	151	153	159	163	172	178	181	179	178	176	174	168
# Hgb > 11	88	81	73	79	77	89	94	103	99	75	82	90
Pop. Mean	11.3	11.2	11.1	11.2	11.0	11.0	11.2	11.3	11.1	11.1	11.2	11.2
Std. Deviation	1.4	1.5	1.5	1.5	1.5	1.5	1.4	1.4	1.6	1.4	1.6	1.7
% Hgb > 11	58%	53%	46%	48%	45%	50%	52%	58%	56%	43%	47%	54%



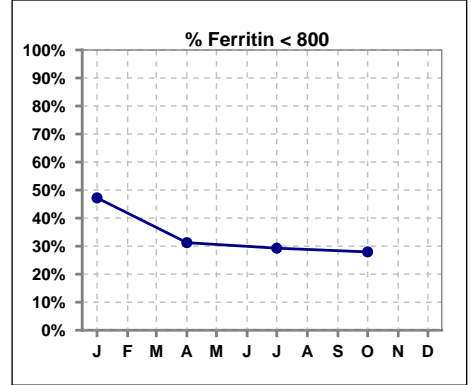
	Jan	Feb	Mar	Apr	May	Jun	Jul	Aug	Sep	Oct	Nov	Dec
# Hgb	151	153	159	163	172	178	181	179	178	176	174	168
# Hgb > 12	42	43	41	37	31	37	40	44	34	36	43	40
Pop. Mean	11.3	11.2	11.1	11.2	11.0	11.0	11.2	11.3	11.1	11.1	11.2	11.2
Std. Deviation	1.4	1.5	1.5	1.5	1.5	1.5	1.4	1.4	1.6	1.4	1.6	1.7
% Hgb > 12	28%	28%	26%	23%	18%	21%	22%	25%	19%	20%	25%	24%



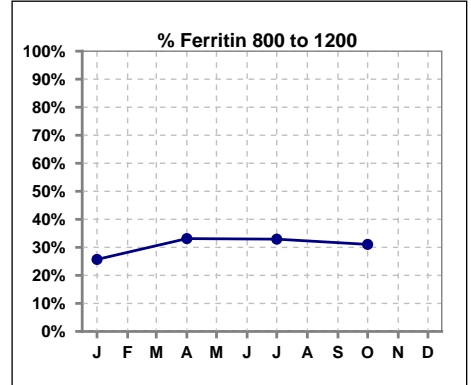
IV. ANEMIA - CONT.

Iron Profile

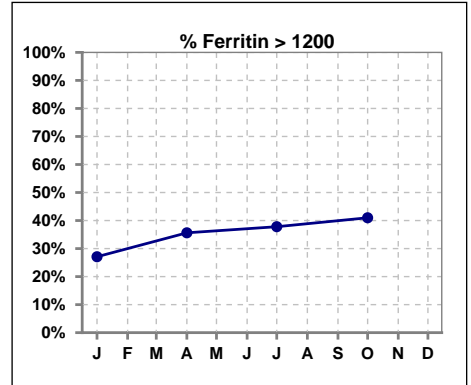
	Jan	Feb	Mar	Apr	May	Jun	Jul	Aug	Sep	Oct	Nov	Dec
# Ferritin	144			160			164			161		
# Ferritin < 800	68			50			48			45		
Pop. Mean	899			1059			1082			1157		
Std. Deviation	559			611			586			969		
% Ferritin < 800	47%			31%			29%			28%		



	Jan	Feb	Mar	Apr	May	Jun	Jul	Aug	Sep	Oct	Nov	Dec
# Ferritin	144			160			164			161		
# Ferritin 800 to 1200	37			53			54			50		
Pop. Mean	899			1059			1082			1157		
Std. Deviation	559			611			586			969		
% Ferritin 800 to 1200	26%			33%			33%			31%		



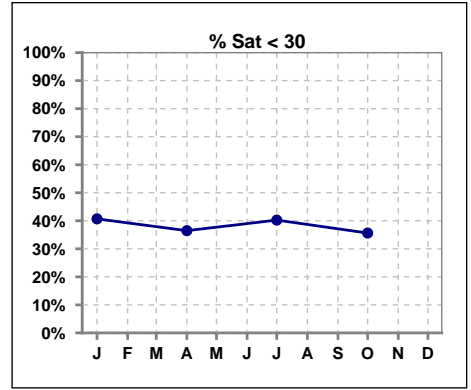
	Jan	Feb	Mar	Apr	May	Jun	Jul	Aug	Sep	Oct	Nov	Dec
# Ferritin	144			160			164			161		
# Ferritin > 1200	39			57			62			66		
Pop. Mean	899			1059			1082			1157		
Std. Deviation	559			611			586			969		
% Ferritin > 1200	27%			36%			38%			41%		



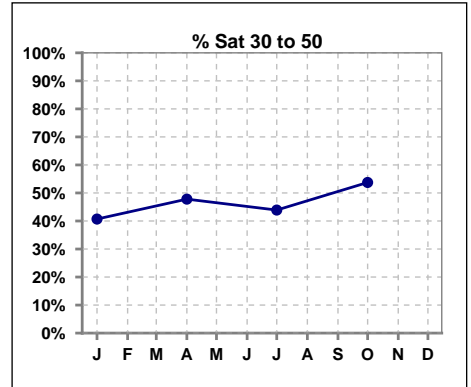
Methodology: a) Kt/V, CRCL and nPNa values are 4 month rolling mean of last value for each month, all other report lab results are based on last value of month; b) BP's are average of all values for month.

IV. ANEMIA - CONT.

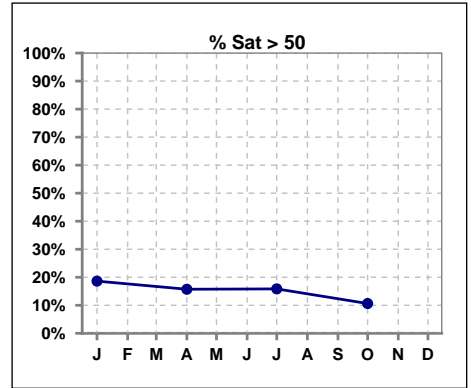
	Jan	Feb	Mar	Apr	May	Jun	Jul	Aug	Sep	Oct	Nov	Dec
# % Sat	145			159			164			160		
# % Sat < 30	59			58			66			57		
Pop. Mean	37			37			36			35		
Std. Deviation	18			17			18			16		
% % Sat < 30	41%			36%			40%			36%		



	Jan	Feb	Mar	Apr	May	Jun	Jul	Aug	Sep	Oct	Nov	Dec
# % Sat	145			159			164			160		
# % Sat 30 to 50	59			76			72			86		
Pop. Mean	37			37			36			35		
Std. Deviation	18			17			18			16		
% Sat% 30 to 50	41%			48%			44%			54%		

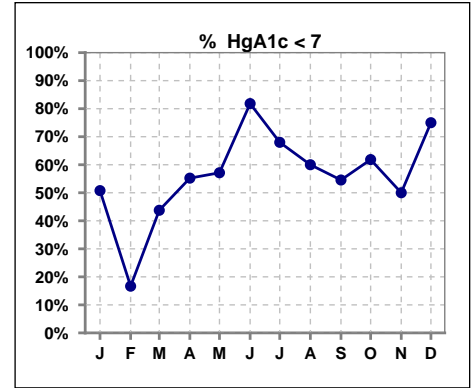


	Jan	Feb	Mar	Apr	May	Jun	Jul	Aug	Sep	Oct	Nov	Dec
# % Sat	145			159			164			160		
# % Sat > 50	27			25			26			17		
Pop. Mean	37			37			36			35		
Std. Deviation	18			17			18			16		
% Sat% > 50	19%			16%			16%			11%		



V. Diabetes

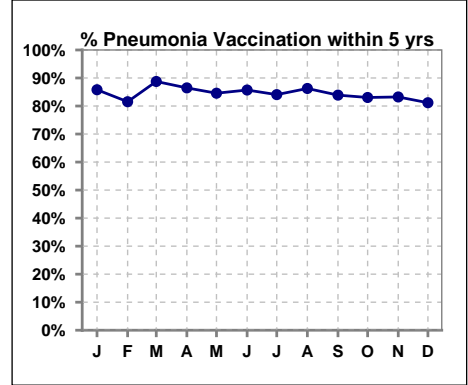
	Jan	Feb	Mar	Apr	May	Jun	Jul	Aug	Sep	Oct	Nov	Dec
# HgA1c	65	6	16	67	14	11	75	10	11	76	4	4
# HgA1c < 7	33	1	7	37	8	9	51	6	6	47	2	3
Pop. Mean	7.1	7.9	7.3	6.9	7.2	6.9	6.7	6.4	6.9	6.7	6.6	6.4
Std. Deviation	1.16	1.17	1.35	1.21	1.10	1.23	1.18	0.90	0.91	1.15	1.52	0.45
% HgA1c < 7	51%	17%	44%	55%	57%	82%	68%	60%	55%	62%	50%	75%



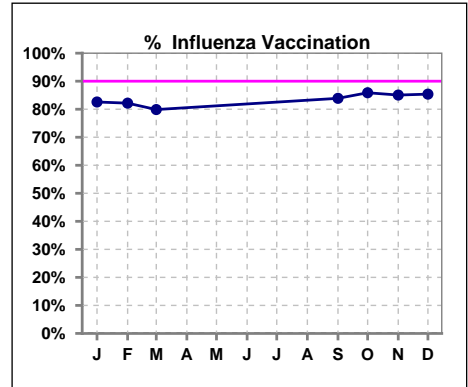
VI. Infection Control

Pneumonia vaccination within the past five years

	Jan	Feb	Mar	Apr	May	Jun	Jul	Aug	Sep	Oct	Nov	Dec
# Patient	155	157	169	170	175	182	182	182	180	177	173	170
# Pneumonia	133	128	150	147	148	156	153	157	151	147	144	138
% Pneumonia	86%	82%	89%	86%	85%	86%	84%	86%	84%	83%	83%	81%



	Jan	Feb	Mar	Apr	May	Jun	Jul	Aug	Sep	Oct	Nov	Dec
# Patient	155	157	169						180	177	174	171
# Influenza	128	129	135						151	152	148	146
% Influenza	83%	82%	80%						84%	86%	85%	85%



Exit Site Infection Rate

	Jan	Feb	Mar	Apr	May	Jun	Jul	Aug	Sep	Oct	Nov	Dec
Current Month	38.24	50.03	55.07	167.62	43.87	0	61.13	46.21	88.61	90.27	87.41	176.07
Rolling Year-to-date	0.22	0.21	0.20	0.19	0.19	0.16	0.17	0.17	0.15	0.15	0.16	0.15

Peritonitis Infection Rate

	Jan	Feb	Mar	Apr	May	Jun	Jul	Aug	Sep	Oct	Nov	Dec
Current Month	21.85	37.52	27.54	33.52	43.87	35.15	36.68	23.11	59.07	45.13	21.85	88.03
Rolling Year-to-date	0.40	0.40	0.40	0.40	0.38	0.37	0.38	0.41	0.37	0.35	0.35	0.34