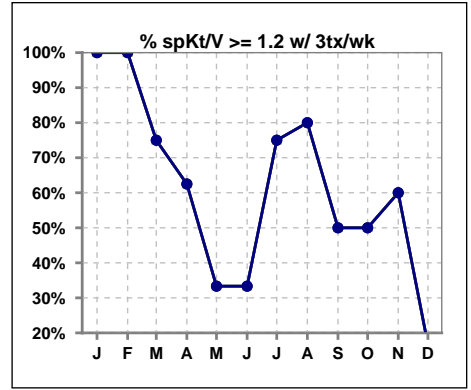
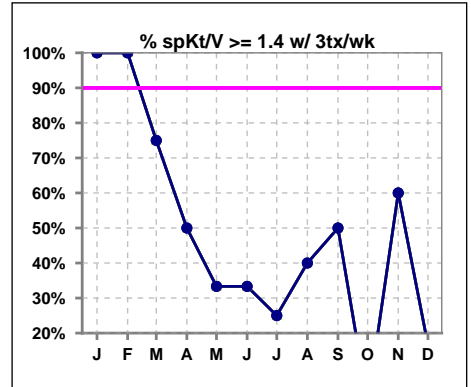


I. ADEQUACY OF DIALYSIS

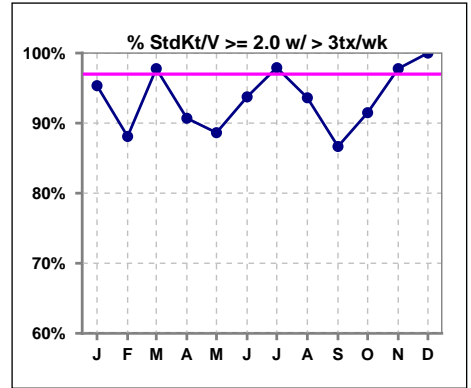
	Jan	Feb	Mar	Apr	May	Jun	Jul	Aug	Sep	Oct	Nov	Dec
# spKt/V w/3tx/wk	3	3	4	8	6	3	4	5	6	2	5	6
# spKt/V >=1.2 w/3tx/wk	3	3	3	5	2	1	3	4	3	1	3	1
Pop. Mean	1.75	1.73	1.45	1.23	1.10	0.98	1.24	1.34	1.31	0.85	1.24	0.94
Std. Deviation	0.08	0.12	0.53	0.46	0.42	0.43	0.42	0.32	0.27	0.49	0.40	0.33
% >=1.2 w/3tx/wk	100%	100%	75%	63%	33%	33%	75%	80%	50%	50%	60%	17%



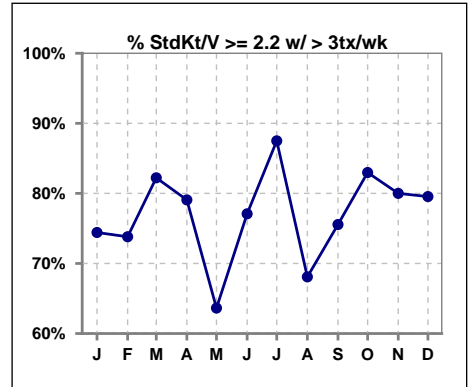
	Jan	Feb	Mar	Apr	May	Jun	Jul	Aug	Sep	Oct	Nov	Dec
# spKt/V w/3tx/wk	3	3	4	8	6	3	4	5	6	2	5	6
# spKt/V >=1.4 w/3tx/wk	3	3	3	4	2	1	1	2	3	0	3	1
Pop. Mean	1.75	1.73	1.45	1.23	1.10	0.98	1.24	1.34	1.31	0.85	1.24	0.94
Std. Deviation	0.08	0.12	0.53	0.46	0.42	0.43	0.42	0.32	0.27	0.49	0.40	0.33
% >=1.4 w/3tx/wk	100%	100%	75%	50%	33%	33%	25%	40%	50%	0%	60%	17%



	Jan	Feb	Mar	Apr	May	Jun	Jul	Aug	Sep	Oct	Nov	Dec
# StdKt/V w/>3tx/wk	43	42	45	43	44	48	48	47	45	47	45	44
# >= 2.0 w/>3tx/wk	41	37	44	39	39	45	47	44	39	43	44	44
Pop. Mean	2.44	2.41	2.53	2.46	2.38	2.50	2.58	2.51	2.45	2.46	2.40	2.41
Std. Deviation	0.46	0.42	0.47	0.41	0.36	0.42	0.43	0.59	0.45	0.49	0.28	0.25
% >= 2.0 w/>3tx/wk	95%	88%	98%	91%	89%	94%	98%	94%	87%	91%	98%	100%



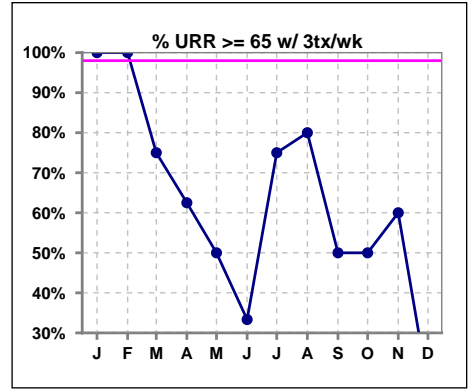
	Jan	Feb	Mar	Apr	May	Jun	Jul	Aug	Sep	Oct	Nov	Dec
# StdKt/V w/>3tx/wk	43	42	45	43	44	48	48	47	45	47	45	44
# >= 2.2 w/>3tx/wk	32	31	37	34	28	37	42	32	34	39	36	35
Pop. Mean	2.44	2.41	2.53	2.46	2.38	2.50	2.58	2.51	2.45	2.46	2.40	2.41
Std. Deviation	0.46	0.42	0.47	0.41	0.36	0.42	0.43	0.59	0.45	0.49	0.28	0.25
% >= 2.2 w/>3tx/wk	74%	74%	82%	79%	64%	77%	88%	68%	76%	83%	80%	80%



Methodology: a) All labs for 'Adequacy of Dialysis', 'Nutrition', 'Osteodystrophy' and 'Anemia' based on last value of month; b) Access data takes last access of month; c) Values for 'Infection Control' uses most recent result.

I. ADEQUACY OF DIALYSIS - CONT.

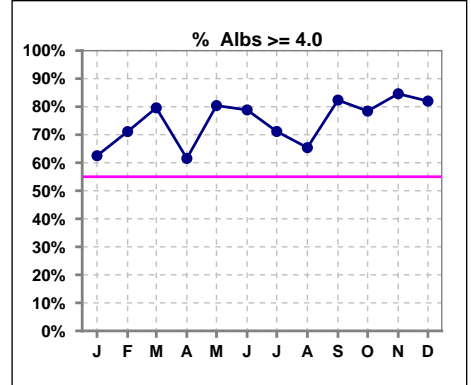
	Jan	Feb	Mar	Apr	May	Jun	Jul	Aug	Sep	Oct	Nov	Dec
# URR w/ 3tx/wk	3	3	4	8	6	3	4	5	6	2	5	6
# URR>=65 w/ 3tx/wk	3	3	3	5	3	1	3	4	3	1	3	1
Pop. Mean	78	77	67	63	59	53	64	69	67	51	64	53
Std. Deviation	2.41	1.75	16.97	15.13	15.60	15.93	14.84	9.45	7.86	21.06	14.63	12.83
% URR>=65 w/ 3tx/wk	100%	100%	75%	63%	50%	33%	75%	80%	50%	50%	60%	17%



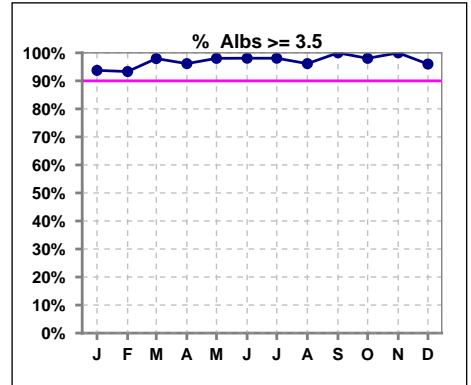
*Albumin values use BCG method - as of July 2001

II. NUTRITION

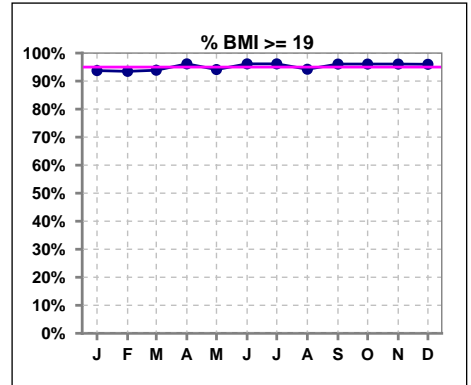
	Jan	Feb	Mar	Apr	May	Jun	Jul	Aug	Sep	Oct	Nov	Dec
# Albumin	48	45	49	52	51	52	52	52	51	51	52	50
# Albumin >= 4.0	30	32	39	32	41	41	37	34	42	40	44	41
Pop. Mean	4.0	4.1	4.1	4.1	4.2	4.2	4.0	4.1	4.2	4.2	4.2	4.3
Std. Deviation	0.32	0.35	0.34	0.35	0.33	0.30	0.26	0.37	0.32	0.33	0.24	0.38
% Alb >= 4.0	63%	71%	80%	62%	80%	79%	71%	65%	82%	78%	85%	82%



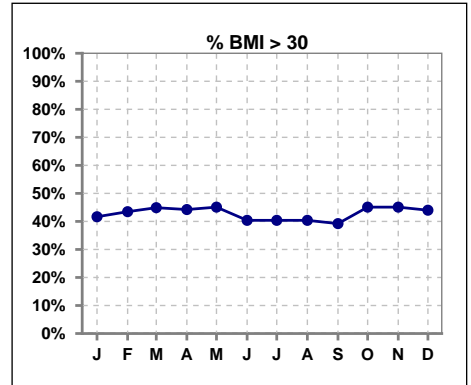
	Jan	Feb	Mar	Apr	May	Jun	Jul	Aug	Sep	Oct	Nov	Dec
# Albumin	48	45	49	52	51	52	52	52	51	51	52	50
# Albumin >= 3.5	45	42	48	50	50	51	51	50	51	50	52	48
Pop. Mean	4.0	4.1	4.1	4.1	4.2	4.2	4.0	4.1	4.2	4.2	4.2	4.3
Std. Deviation	0.32	0.35	0.34	0.35	0.33	0.30	0.26	0.37	0.32	0.33	0.24	0.38
% Alb >= 3.5	94%	93%	98%	96%	98%	98%	98%	96%	100%	98%	100%	96%



	Jan	Feb	Mar	Apr	May	Jun	Jul	Aug	Sep	Oct	Nov	Dec
# BMI	48	46	49	52	51	52	52	52	51	51	51	50
# BMI >= 19	45	43	46	50	48	50	50	49	49	49	49	48
Pop. Mean	31	31	31	31	31	30	30	30	30	30	31	31
Std. Deviation	9.5	8.6	8.6	8.5	8.5	8.1	7.9	7.9	7.7	7.5	8.5	8.7
% BMI >= 19	94%	93%	94%	96%	94%	96%	96%	94%	96%	96%	96%	96%



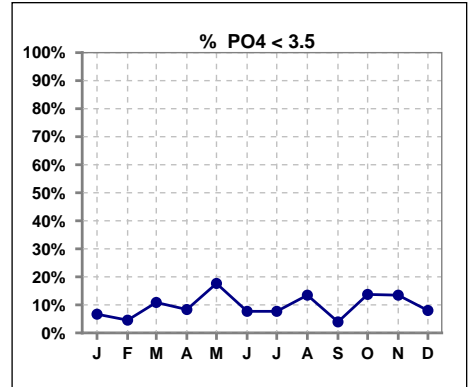
	Jan	Feb	Mar	Apr	May	Jun	Jul	Aug	Sep	Oct	Nov	Dec
# BMI	48	46	49	52	51	52	52	52	51	51	51	50
# BMI > 30	20	20	22	23	23	21	21	21	20	23	23	22
Pop. Mean	31	31	31	31	31	30	30	30	30	30	31	31
Std. Deviation	9.5	8.6	8.6	8.5	8.5	8.1	7.9	7.9	7.7	7.5	8.5	8.7
% BMI > 30	42%	43%	45%	44%	45%	40%	40%	40%	39%	45%	45%	44%



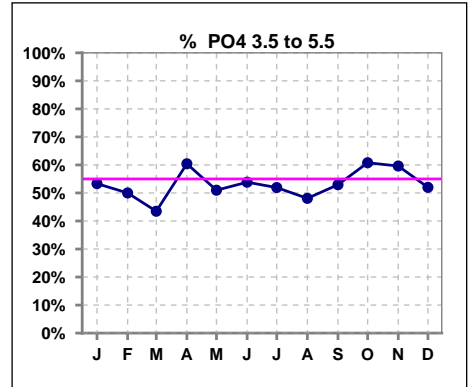
Lab methodology for PTH changed January 2012

III. OSTEODYSTROPHY

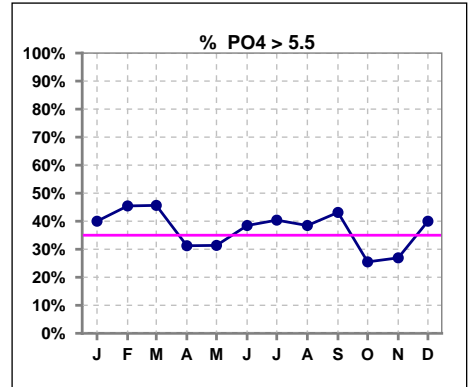
	Jan	Feb	Mar	Apr	May	Jun	Jul	Aug	Sep	Oct	Nov	Dec
# PO4	45	44	46	48	51	52	52	52	51	51	52	50
# PO4 < 3.5	3	2	5	4	9	4	4	7	2	7	7	4
Pop. Mean	5.6	5.5	5.3	5.3	5.0	5.2	5.2	5.1	5.3	5.1	5.0	5.5
Std. Deviation	1.57	1.56	1.43	1.52	1.63	1.46	1.43	1.32	1.37	1.71	1.35	2.02
% PO4 < 3.5	7%	5%	11%	8%	18%	8%	8%	13%	4%	14%	13%	8%



	Jan	Feb	Mar	Apr	May	Jun	Jul	Aug	Sep	Oct	Nov	Dec
# PO4	45	44	46	48	51	52	52	52	51	51	52	50
# PO4 3.5 to 5.5	24	22	20	29	26	28	27	25	27	31	31	26
Pop. Mean	5.6	5.5	5.3	5.3	5.0	5.2	5.2	5.1	5.3	5.1	5.0	5.5
Std. Deviation	1.57	1.56	1.43	1.52	1.63	1.46	1.43	1.32	1.37	1.71	1.35	2.02
% PO4 3.5 to 5.5	53%	50%	43%	60%	51%	54%	52%	48%	53%	61%	60%	52%



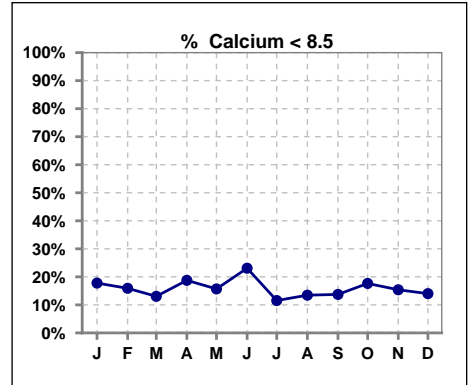
	Jan	Feb	Mar	Apr	May	Jun	Jul	Aug	Sep	Oct	Nov	Dec
# PO4	45	44	46	48	51	52	52	52	51	51	52	50
# PO4 > 5.5	18	20	21	15	16	20	21	20	22	13	14	20
Pop. Mean	5.6	5.5	5.3	5.3	5.0	5.2	5.2	5.1	5.3	5.1	5.0	5.5
Std. Deviation	1.57	1.56	1.43	1.52	1.63	1.46	1.43	1.32	1.37	1.71	1.35	2.02
% PO4 > 5.5	40%	45%	46%	31%	31%	38%	40%	38%	43%	25%	27%	40%



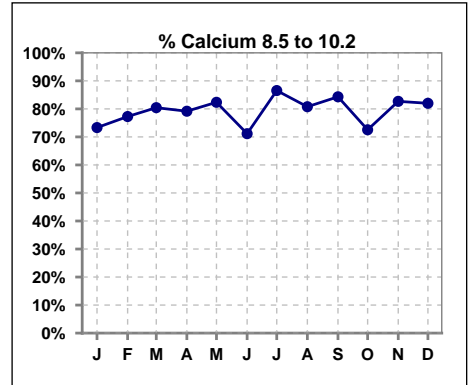
Lab methodology for PTH changed January 2012

III. OSTEODYSTROPHY - CONT.

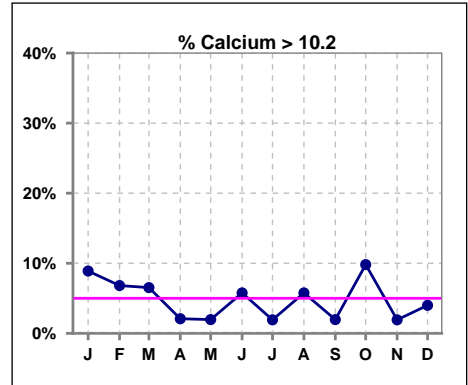
	Jan	Feb	Mar	Apr	May	Jun	Jul	Aug	Sep	Oct	Nov	Dec
# Calcium	45	44	46	48	51	52	52	52	51	51	52	50
# Calcium < 8.5	8	7	6	9	8	12	6	7	7	9	8	7
Pop. Mean	9.2	9.2	9.2	9.0	9.1	9.0	9.1	9.1	9.1	9.2	9.1	9.1
Std. Deviation	0.86	0.80	0.64	0.65	0.70	0.69	0.62	0.75	0.70	0.67	0.64	0.82
% Calcium < 8.5	18%	16%	13%	19%	16%	23%	12%	13%	14%	18%	15%	14%



	Jan	Feb	Mar	Apr	May	Jun	Jul	Aug	Sep	Oct	Nov	Dec
# Calcium	45	44	46	48	51	52	52	52	51	51	52	50
# Calcium 8.5 to 10.2	33	34	37	38	42	37	45	42	43	37	43	41
Pop. Mean	9.2	9.2	9.2	9.0	9.1	9.0	9.1	9.1	9.1	9.2	9.1	9.1
Std. Deviation	0.86	0.80	0.64	0.65	0.70	0.69	0.62	0.75	0.70	0.67	0.64	0.82
% Calcium 8.5 to 10.2	73%	77%	80%	79%	82%	71%	87%	81%	84%	73%	83%	82%



	Jan	Feb	Mar	Apr	May	Jun	Jul	Aug	Sep	Oct	Nov	Dec
# Calcium	45	44	46	48	51	52	52	52	51	51	52	50
# Calcium > 10.2	4	3	3	1	1	3	1	3	1	5	1	2
Pop. Mean	9.2	9.2	9.2	9.0	9.1	9.0	9.1	9.1	9.1	9.2	9.1	9.1
Std. Deviation	0.86	0.80	0.64	0.65	0.70	0.69	0.62	0.75	0.70	0.67	0.64	0.82
% Calcium > 10.2	9%	7%	7%	2%	2%	6%	2%	6%	2%	10%	2%	4%

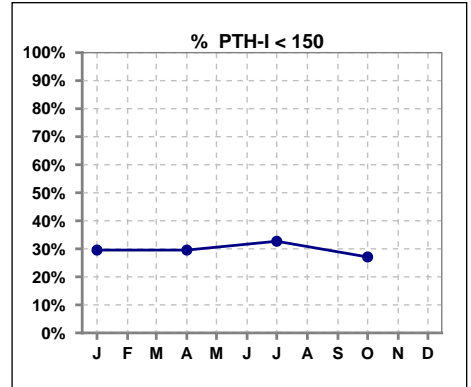


Methodology: a) All labs for 'Adequacy of Dialysis', 'Nutrition', 'Osteodystrophy' and 'Anemia' based on last value of month; b) Access data takes last access of month; c) Values for 'Infection Control' uses most recent result.

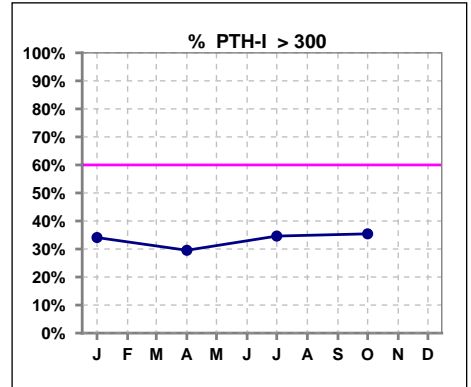
Lab methodology for PTH changed January 2012

III. OSTEODYSTROPHY - CONT.

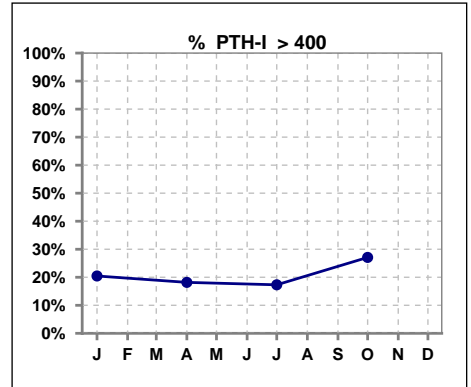
	Jan	Feb	Mar	Apr	May	Jun	Jul	Aug	Sep	Oct	Nov	Dec
# PTH-I	44			44			52			48		
# PTH-I < 150	13			13			17			13		
Pop. Mean	307			266			284			302		
Std. Deviation	280			197			221			224		
% PTH-I < 150	30%			30%			33%			27%		



	Jan	Feb	Mar	Apr	May	Jun	Jul	Aug	Sep	Oct	Nov	Dec
# PTH-I	44			44			52			48		
# PTH-I > 300	15			13			18			17		
Pop. Mean	307			266			284			302		
Std. Deviation	280			197			221			224		
% PTH-I > 300	34%			30%			35%			35%		



	Jan	Feb	Mar	Apr	May	Jun	Jul	Aug	Sep	Oct	Nov	Dec
# PTH-I	44			44			52			48		
# PTH-I > 400	9			8			9			13		
Pop. Mean	307			266			284			302		
Std. Deviation	280			197			221			224		
% PTH-I > 400	20%			18%			17%			27%		

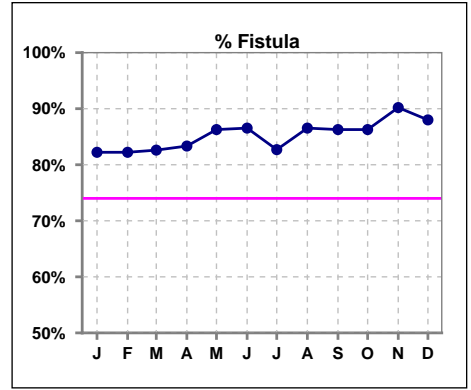


Methodology: a) All labs for 'Adequacy of Dialysis', 'Nutrition', 'Osteodystrophy' and 'Anemia' based on last value of month; b) Access data takes last access of month; c) Values for 'Infection Control' uses most recent result.

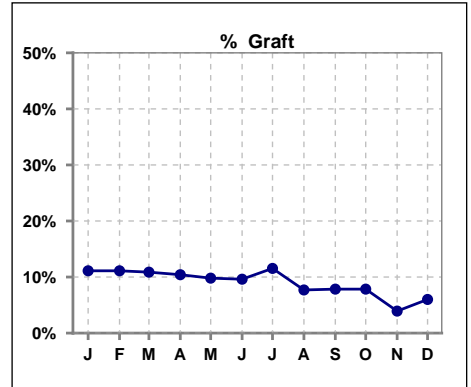
Northwest Kidney Centers - Home Hemodialysis
Quality Assurance Reports
 Through period ending Dec. 31, 2012

IV. ACCESS

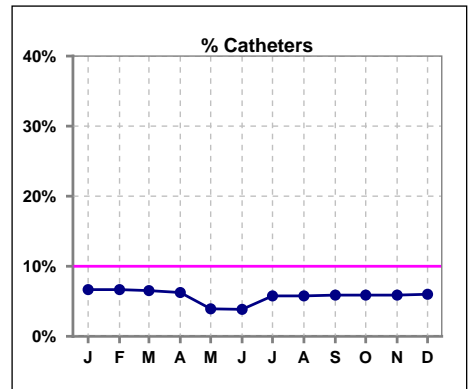
	Jan	Feb	Mar	Apr	May	Jun	Jul	Aug	Sep	Oct	Nov	Dec
# Access	45	45	46	48	51	52	52	52	51	51	51	50
# Fistula	37	37	38	40	44	45	43	45	44	44	46	44
% Fistula	82%	82%	83%	83%	86%	87%	83%	87%	86%	86%	90%	88%



	Jan	Feb	Mar	Apr	May	Jun	Jul	Aug	Sep	Oct	Nov	Dec
# Access	45	45	46	48	51	52	52	52	51	51	51	50
# Graft	5	5	5	5	5	5	6	4	4	4	2	3
% Graft	11%	11%	11%	10%	10%	10%	12%	8%	8%	8%	4%	6%



	Jan	Feb	Mar	Apr	May	Jun	Jul	Aug	Sep	Oct	Nov	Dec
# Access	45	45	46	48	51	52	52	52	51	51	51	50
# Catheters	3	3	3	3	2	2	3	3	3	3	3	3
% Catheters	7%	7%	7%	6%	4%	4%	6%	6%	6%	6%	6%	6%



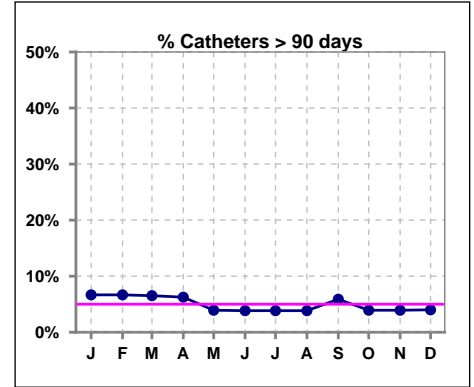
Methodology: a) All labs for 'Adequacy of Dialysis', 'Nutrition', 'Osteodystrophy' and 'Anemia' based on last value of month; b) Access data takes last access of month; c) Values for 'Infection Control' uses most recent result.

IV. ACCESS - CONT.

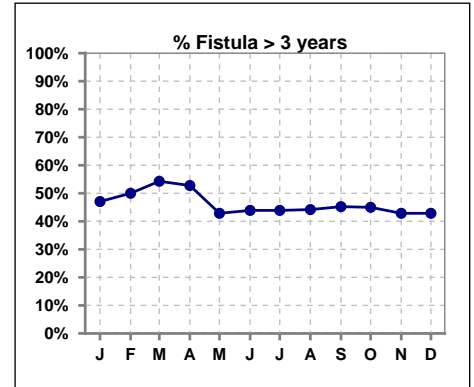
Catheters > 90 days

	Jan	Feb	Mar	Apr	May	Jun	Jul	Aug	Sep	Oct	Nov	Dec
# Access	45	45	46	48	51	52	52	52	51	51	51	50
# Catheters	3	3	3	3	2	2	2	2	3	2	2	2
% Catheters	7%	7%	7%	6%	4%	4%	4%	4%	6%	4%	4%	4%

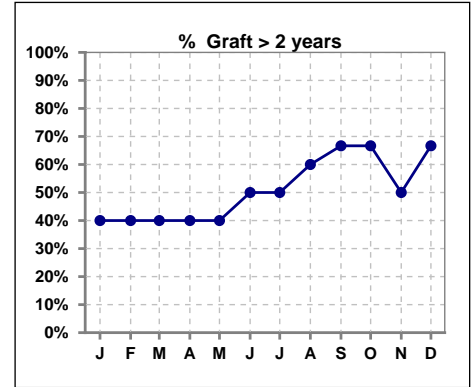
Definition: Catheter in use on last treatment of the month



	Jan	Feb	Mar	Apr	May	Jun	Jul	Aug	Sep	Oct	Nov	Dec
# Fistula	34	34	35	36	42	41	41	43	42	40	42	42
# Fistula > 3 yrs	16	17	19	19	18	18	18	19	19	18	18	18
% Fistula > 3 yrs	47%	50%	54%	53%	43%	44%	44%	44%	45%	45%	43%	43%

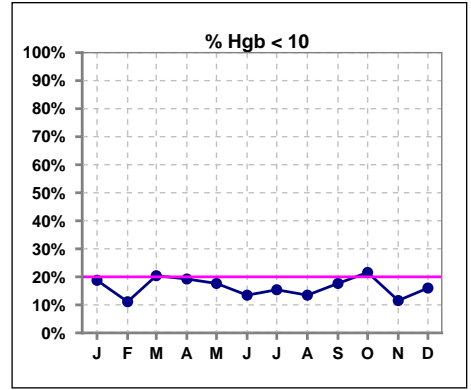


	Jan	Feb	Mar	Apr	May	Jun	Jul	Aug	Sep	Oct	Nov	Dec
# Graft	5	5	5	5	5	6	6	5	3	3	2	3
# Graft > 2 yrs	2	2	2	2	2	3	3	3	2	2	1	2
% Graft > 2 yrs	40%	40%	40%	40%	40%	50%	50%	60%	67%	67%	50%	67%

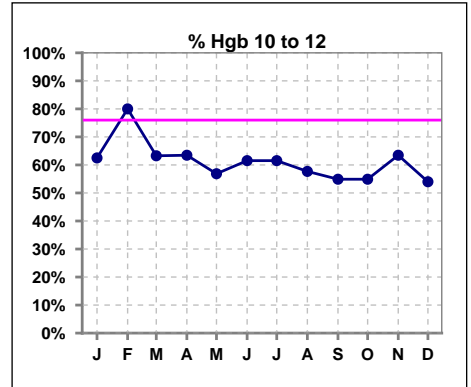


V. ANEMIA

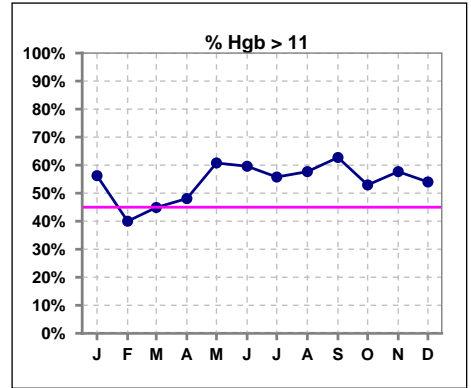
	Jan	Feb	Mar	Apr	May	Jun	Jul	Aug	Sep	Oct	Nov	Dec
# Hgb	48	45	49	52	51	52	52	52	51	51	52	50
# Hgb < 10	9	5	10	10	9	7	8	7	9	11	6	8
Pop. Mean	11.0	11.0	11.0	11.0	11.1	11.3	11.2	11.2	11.3	11.1	11.2	11.3
Std. Deviation	1.2	1.0	1.4	1.4	1.4	1.4	1.4	1.4	1.4	1.3	1.2	1.3
% Hgb < 10	19%	11%	20%	19%	18%	13%	15%	13%	18%	22%	12%	16%



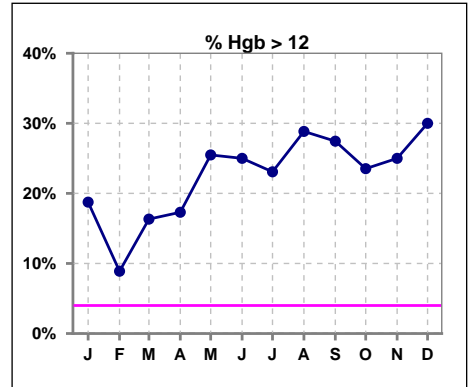
	Jan	Feb	Mar	Apr	May	Jun	Jul	Aug	Sep	Oct	Nov	Dec
# Hgb	48	45	49	52	51	52	52	52	51	51	52	50
# Hgb 10 to 12	30	36	31	33	29	32	32	30	28	28	33	27
Pop. Mean	11.0	11.0	11.0	11.0	11.1	11.3	11.2	11.2	11.3	11.1	11.2	11.3
Std. Deviation	1.2	1.0	1.4	1.4	1.4	1.4	1.4	1.4	1.4	1.3	1.2	1.3
% Hgb 10 to 12	63%	80%	63%	63%	57%	62%	62%	58%	55%	55%	63%	54%



	Jan	Feb	Mar	Apr	May	Jun	Jul	Aug	Sep	Oct	Nov	Dec
# Hgb	48	45	49	52	51	52	52	52	51	51	52	50
# Hgb > 11	27	18	22	25	31	31	29	30	32	27	30	27
Pop. Mean	11.0	11.0	11.0	11.0	11.1	11.3	11.2	11.2	11.3	11.1	11.2	11.3
Std. Deviation	1.2	1.0	1.4	1.4	1.4	1.4	1.4	1.4	1.4	1.3	1.2	1.3
% Hgb > 11	56%	40%	45%	48%	61%	60%	56%	58%	63%	53%	58%	54%



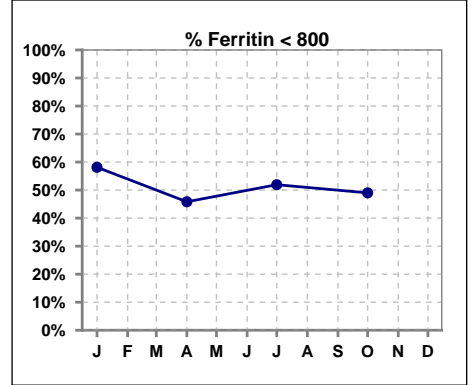
	Jan	Feb	Mar	Apr	May	Jun	Jul	Aug	Sep	Oct	Nov	Dec
# Hgb	48	45	49	52	51	52	52	52	51	51	52	50
# Hgb > 12	9	4	8	9	13	13	12	15	14	12	13	15
Pop. Mean	11.0	11.0	11.0	11.0	11.1	11.3	11.2	11.2	11.3	11.1	11.2	11.3
Std. Deviation	1.2	1.0	1.4	1.4	1.4	1.4	1.4	1.4	1.4	1.3	1.2	1.3
% Hgb > 12	19%	9%	16%	17%	25%	25%	23%	29%	27%	24%	25%	30%



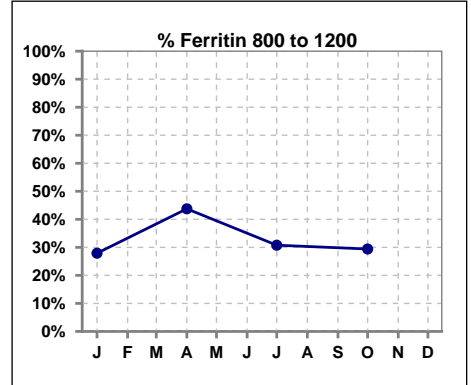
V. ANEMIA - CONT.

Iron Profile

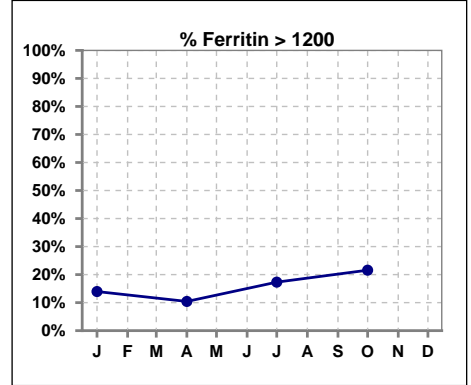
	Jan	Feb	Mar	Apr	May	Jun	Jul	Aug	Sep	Oct	Nov	Dec
# Ferritin	43			48			52			51		
# Ferritin < 800	25			22			27			25		
Pop. Mean	741			742			790			845		
Std. Deviation	426			414			423			498		
% Ferritin < 800	58%			46%			52%			49%		



	Jan	Feb	Mar	Apr	May	Jun	Jul	Aug	Sep	Oct	Nov	Dec
# Ferritin	43			48			52			51		
# Ferritin 800 to 1200	12			21			16			15		
Pop. Mean	741			742			790			845		
Std. Deviation	426			414			423			498		
% Ferritin 800 to 1200	28%			44%			31%			29%		

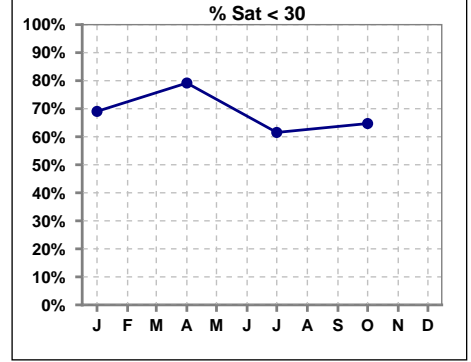


	Jan	Feb	Mar	Apr	May	Jun	Jul	Aug	Sep	Oct	Nov	Dec
# Ferritin	43			48			52			51		
# Ferritin > 1200	6			5			9			11		
Pop. Mean	741			742			790			845		
Std. Deviation	426			414			423			498		
% Ferritin > 1200	14%			10%			17%			22%		

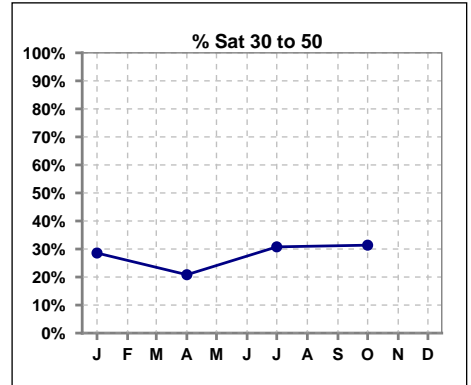


V. ANEMIA - CONT.

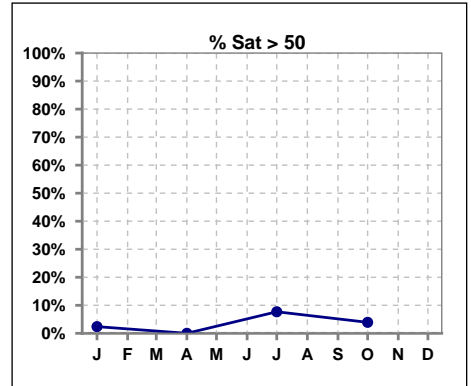
	Jan	Feb	Mar	Apr	May	Jun	Jul	Aug	Sep	Oct	Nov	Dec
# % Sat	42			48			52			51		
# % Sat < 30	29			38			32			33		
Pop. Mean	26			24			30			27		
Std. Deviation	10			8			15			11		
% % Sat < 30	69%			79%			62%			65%		



	Jan	Feb	Mar	Apr	May	Jun	Jul	Aug	Sep	Oct	Nov	Dec
# % Sat	42			48			52			51		
# % Sat 30 to 50	12			10			16			16		
Pop. Mean	26			24			30			27		
Std. Deviation	10			8			15			11		
% % Sat 30 to 50	29%			21%			31%			31%		



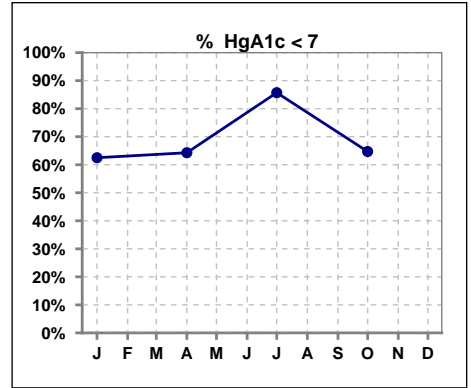
	Jan	Feb	Mar	Apr	May	Jun	Jul	Aug	Sep	Oct	Nov	Dec
# % Sat	42			48			52			51		
# % Sat > 50	1			0			4			2		
Pop. Mean	26			24			30			27		
Std. Deviation	10			8			15			11		
% % Sat > 50	2%			0%			8%			4%		



Methodology: a) All labs for 'Adequacy of Dialysis', 'Nutrition', 'Osteodystrophy' and 'Anemia' based on last value of month; b) Access data takes last access of month; c) Values for 'Infection Control' uses most recent result.

VI. Diabetes

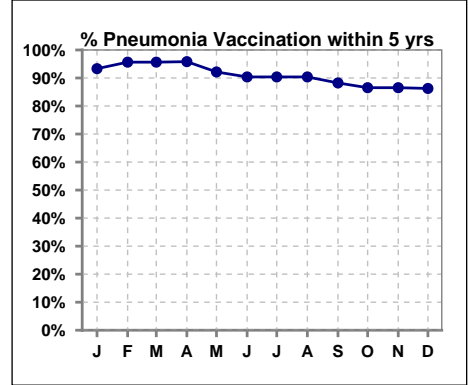
	Jan	Feb	Mar	Apr	May	Jun	Jul	Aug	Sep	Oct	Nov	Dec
# HgA1c	16			14			21			17		
# HgA1c < 7	10			9			18			11		
Pop. Mean	6.7			6.8			6.2			6.3		
Std. Deviation	1.24			0.73			0.86			0.86		
% HgA1c < 7	63%			64%			86%			65%		



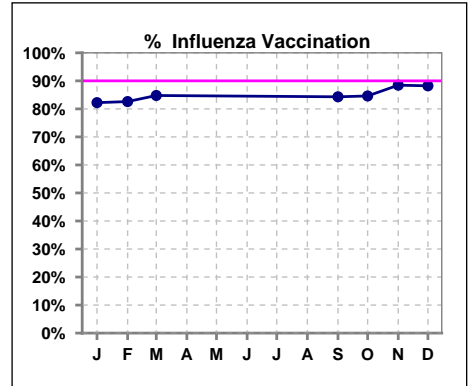
VII. Infection Control

Pneumonia vaccination within the past five years

	Jan	Feb	Mar	Apr	May	Jun	Jul	Aug	Sep	Oct	Nov	Dec
# Patient	45	46	46	48	51	52	52	52	51	52	52	51
# Pneumonia	42	44	44	46	47	47	47	47	45	45	45	44
% Pneumonia	93%	96%	96%	96%	92%	90%	90%	90%	88%	87%	87%	86%



	Jan	Feb	Mar	Apr	May	Jun	Jul	Aug	Sep	Oct	Nov	Dec
# Patient	45	46	46						51	52	52	51
# Influenza	37	38	39						43	44	46	45
% Influenza	82%	83%	85%						84%	85%	88%	88%



Methodology: a) All labs for 'Adequacy of Dialysis', 'Nutrition', 'Osteodystrophy' and 'Anemia' based on last value of month; b) Access data takes last access of month; c) Values for 'Infection Control' uses most recent result.