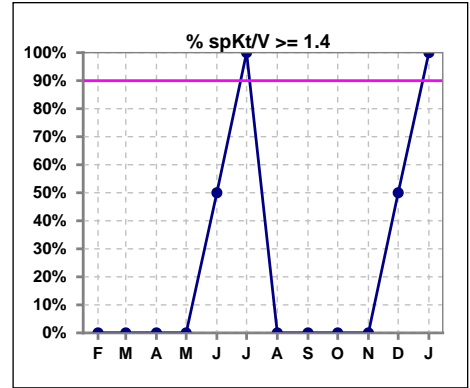
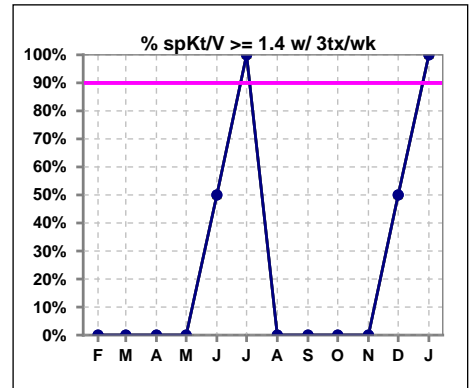


## I. ADEQUACY OF DIALYSIS

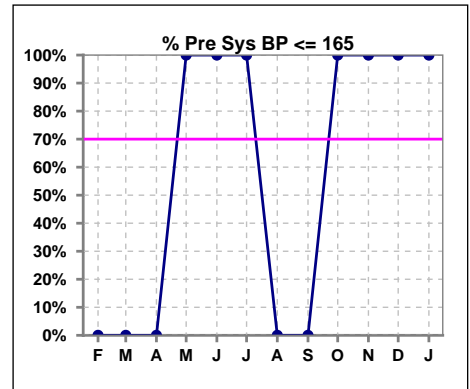
	Feb	Mar	Apr	May	Jun	Jul	Aug	Sep	Oct	Nov	Dec	Jan
# spKt/V	0	0	0	1	2	1	1	1	1	1	2	2
# spKt/V >= 1.4	0	0	0	0	1	1	0	0	0	0	1	2
Pop. Mean	0	0	0	1.30	1.43	1.71	1.15	1.04	1.33	1.27	1.58	1.79
Std. Deviation	0	0	0	0	0.06	0	0	0	0	0	0.43	0.25
% spKt/V >= 1.4	0%	0%	0%	0%	50%	100%	0%	0%	0%	0%	50%	100%
% spKt/V >= 1.2	0%	0%	0%	100%	100%	100%	0%	0%	100%	100%	100%	100%



	Feb	Mar	Apr	May	Jun	Jul	Aug	Sep	Oct	Nov	Dec	Jan
# spKt/V w/ 3tx/wk	0	0	0	1	2	1	1	1	1	1	2	2
# spKt/V >= 1.4 w/3tx/wk	0	0	0	0	1	1	0	0	0	0	1	2
Pop. Mean	0	0	0	1.30	1.43	1.71	1.15	1.04	1.33	1.27	1.58	1.79
Std. Deviation	0	0	0	0	0.06	0	0	0	0	0	0.43	0.25
% spKt/V >= 1.4 w/3tx/wk	0%	0%	0%	0%	50%	100%	0%	0%	0%	0%	50%	100%



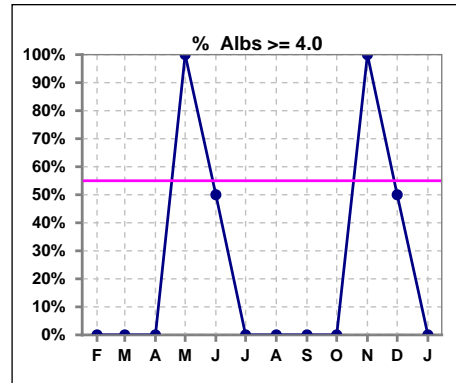
	Feb	Mar	Apr	May	Jun	Jul	Aug	Sep	Oct	Nov	Dec	Jan
# Pre Sys BP	0	0	0	1	2	1	1	1	1	1	2	2
# Pre Sys BP <= 165	0	0	0	1	2	1	0	0	1	1	2	2
Pop. Mean	0	0	0	123	136	135	190	200	123	119	121	111
Std. Deviation	0	0	0	0	4.2	0	0	0	0	0	15.6	1.4
% Pre Sys BP <= 165	0%	0%	0%	100%	100%	100%	0%	0%	100%	100%	100%	100%



\*Albumin values use BCG method - as of July 2001

## II. NUTRITION

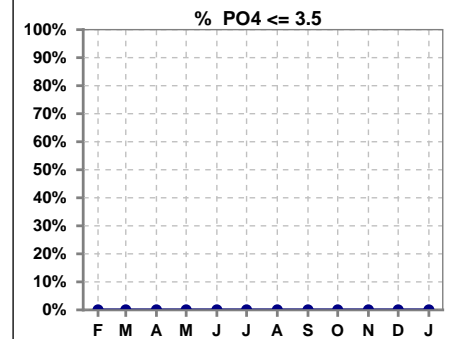
	Feb	Mar	Apr	May	Jun	Jul	Aug	Sep	Oct	Nov	Dec	Jan
# Albumin	0	0	0	1	2	1	1	1	1	1	2	2
# Albumin >= 4.0	0	0	0	1	1	0	0	0	0	1	1	0
Pop. Mean	0	0	0	4.4	3.8	3.7	3.5	3.8	3.7	4.2	3.9	3.5
Std. Deviation	0	0	0	0	0.78	0	0	0	0	0	0.78	0.21
% Alb >= 4.0	0%	0%	0%	100%	50%	0%	0%	0%	0%	100%	50%	0%



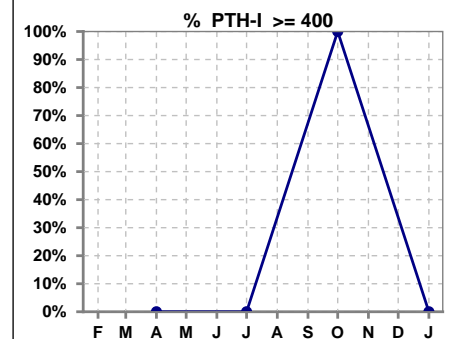
Lab methodology for PTH changed January 2012

### III. OSTEODYSTROPHY

	Feb	Mar	Apr	May	Jun	Jul	Aug	Sep	Oct	Nov	Dec	Jan
# PO4	0	0	0	1	2	1	1	1	1	1	2	2
# PO4 <= 3.5	0	0	0	0	0	0	0	0	0	0	0	0
Pop. Mean	0	0	0	5.7	4.7	4.0	3.6	6.4	9.7	9.4	4.7	5.1
Std. Deviation	0	0	0	0	0.99	0	0	0	0	0	0.78	1.27
% PO4 <= 3.5	0%	0%	0%	0%	0%	0%	0%	0%	0%	0%	0%	0%



	Feb	Mar	Apr	May	Jun	Jul	Aug	Sep	Oct	Nov	Dec	Jan
# PTH-I			0			1			1			2
# PTH-I >= 400			0			0			1			0
Pop. Mean			0			122			701			91
Std. Deviation			0			0			0			18
% PTH-I >= 400			0%			0%			100%			0%

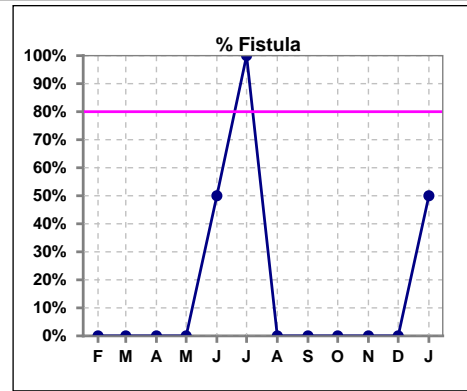


**Enumclaw Kidney Center - Center Hemodialysis**  
**Quality Assurance Reports (Patients in first 90 days of treatment)**  
 Through period ending Jan. 31, 2026

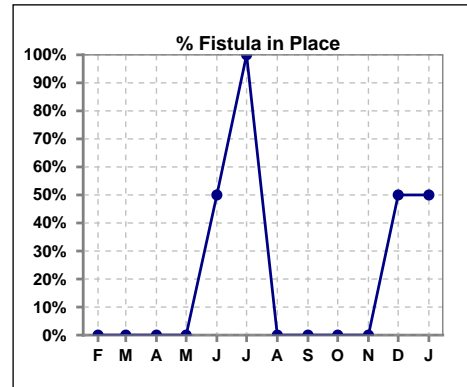
4

**IV. ACCESS**

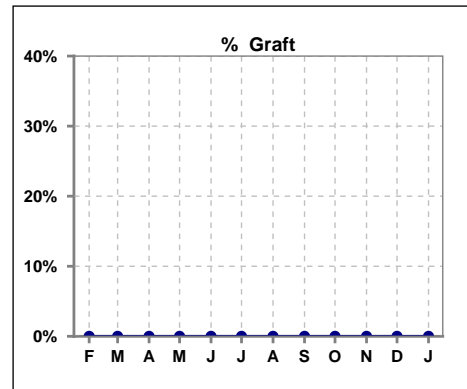
	Feb	Mar	Apr	May	Jun	Jul	Aug	Sep	Oct	Nov	Dec	Jan
# Access	0	0	0	1	2	1	1	1	1	1	2	2
# Fistula	0	0	0	0	1	1	0	0	0	0	0	1
% Fistula	0%	0%	0%	0%	50%	100%	0%	0%	0%	0%	0%	50%



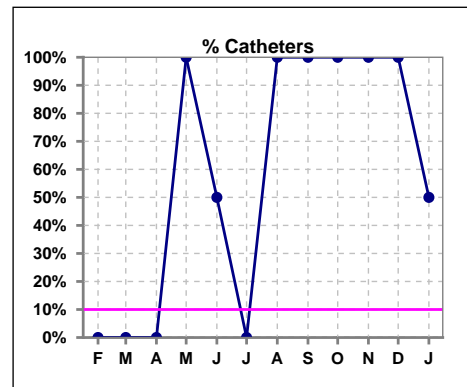
	Feb	Mar	Apr	May	Jun	Jul	Aug	Sep	Oct	Nov	Dec	Jan
# Patient	0	0	0	1	2	1	1	1	1	1	2	2
# Fistula in Place	0	0	0	0	1	1	0	0	0	0	1	1
% Fistula in Place	0%	0%	0%	0%	50%	100%	0%	0%	0%	0%	50%	50%



	Feb	Mar	Apr	May	Jun	Jul	Aug	Sep	Oct	Nov	Dec	Jan
# Access	0	0	0	1	2	1	1	1	1	1	2	2
# Graft	0	0	0	0	0	0	0	0	0	0	0	0
% Graft	0%	0%	0%	0%	0%	0%	0%	0%	0%	0%	0%	0%



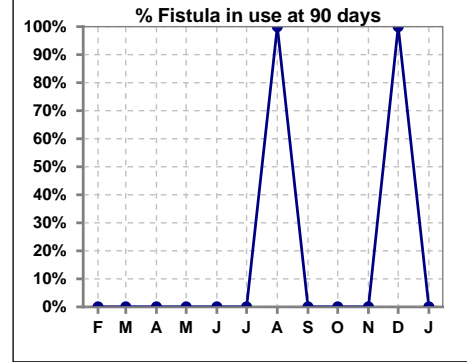
	Feb	Mar	Apr	May	Jun	Jul	Aug	Sep	Oct	Nov	Dec	Jan
# Access	0	0	0	1	2	1	1	1	1	1	2	2
# Catheters	0	0	0	1	1	0	1	1	1	1	2	1
% Catheters	0%	0%	0%	100%	50%	0%	100%	100%	100%	100%	100%	50%



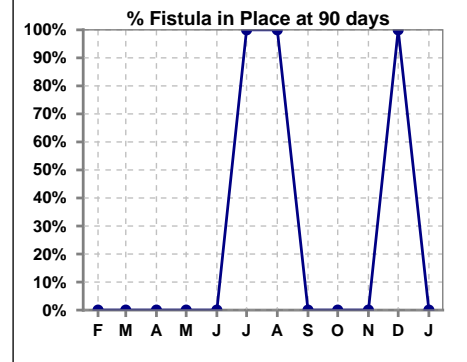
Methodology: a) All labs for 'Adequacy of Dialysis', 'Nutrition', 'Osteodystrophy', 'Anemia' and 'Diabetes' based on last value of month; b) BP's and #L processed are average of all values for month; c) Access data takes last access of month; d) Values for SGA and 'Infection Control' use most recent result.

**IV. ACCESS - CONT. Access at 90 days for those patients that reached 90 days within the month.**

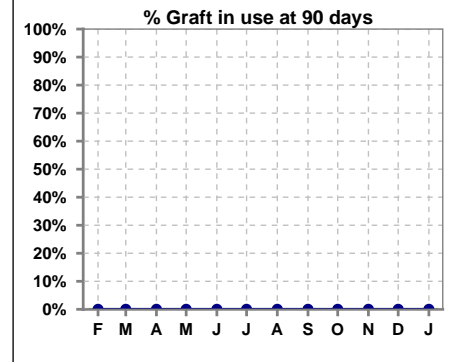
	Feb	Mar	Apr	May	Jun	Jul	Aug	Sep	Oct	Nov	Dec	Jan
# Patient	0	0	0	2	0	1	1	0	0	1	1	1
# Fistula in use	0	0	0	0	0	0	1	0	0	0	1	0
% Fistula in use	0%	0%	0%	0%	0%	0%	100%	0%	0%	0%	100%	0%



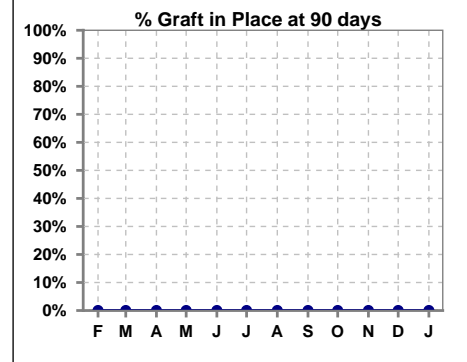
	Feb	Mar	Apr	May	Jun	Jul	Aug	Sep	Oct	Nov	Dec	Jan
# Patient	0	0	0	2	0	1	1	0	0	1	1	1
# Fistula in Place	0	0	0	0	0	1	1	0	0	0	1	0
% Fistula in Place	0%	0%	0%	0%	0%	100%	100%	0%	0%	0%	100%	0%



	Feb	Mar	Apr	May	Jun	Jul	Aug	Sep	Oct	Nov	Dec	Jan
# Patient	0	0	0	2	0	1	1	0	0	1	1	1
# Graft in use	0	0	0	0	0	0	0	0	0	0	0	0
% Graft in use	0%	0%	0%	0%	0%	0%	0%	0%	0%	0%	0%	0%

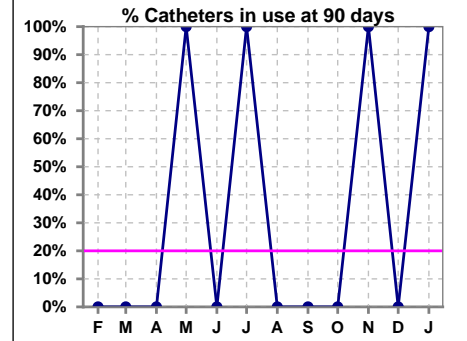


	Feb	Mar	Apr	May	Jun	Jul	Aug	Sep	Oct	Nov	Dec	Jan
# Patient	0	0	0	2	0	1	1	0	0	1	1	1
# Graft in Place	0	0	0	0	0	0	0	0	0	0	0	0
% Graft in Place	0%	0%	0%	0%	0%	0%	0%	0%	0%	0%	0%	0%

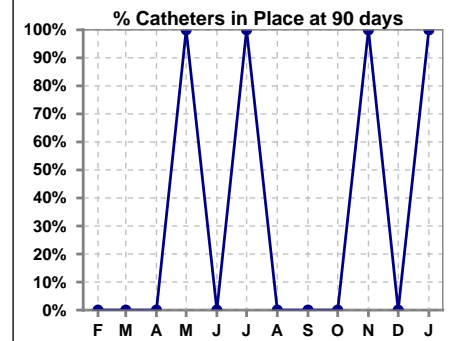


**IV. ACCESS - CONT. Access at 90 days for those patients that reached 90 days within the month.**

	Feb	Mar	Apr	May	Jun	Jul	Aug	Sep	Oct	Nov	Dec	Jan
# Patient	0	0	0	2	0	1	1	0	0	1	1	1
# Catheters in use	0	0	0	2	0	1	0	0	0	1	0	1
% Catheters in use	0%	0%	0%	100%	0%	100%	0%	0%	0%	100%	0%	100%

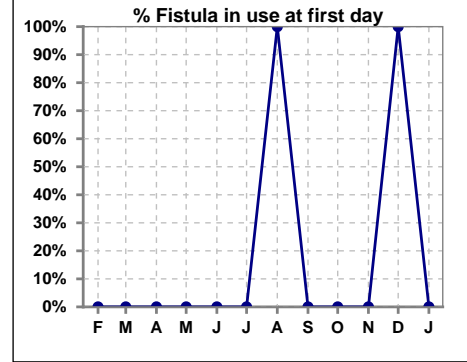


	Feb	Mar	Apr	May	Jun	Jul	Aug	Sep	Oct	Nov	Dec	Jan
# Patient	0	0	0	2	0	1	1	0	0	1	1	1
# Catheters in Place	0	0	0	2	0	1	0	0	0	1	0	1
% Catheters in Place	0%	0%	0%	100%	0%	100%	0%	0%	0%	100%	0%	100%

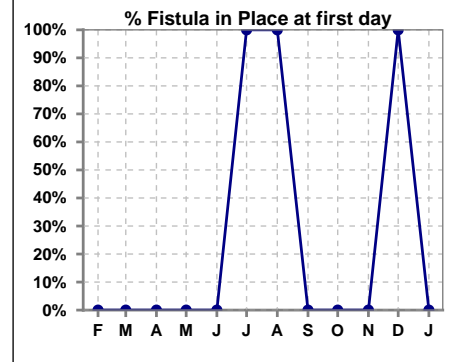


**IV. ACCESS - CONT. Access at first day for those patients that reached 90 days within the month.**

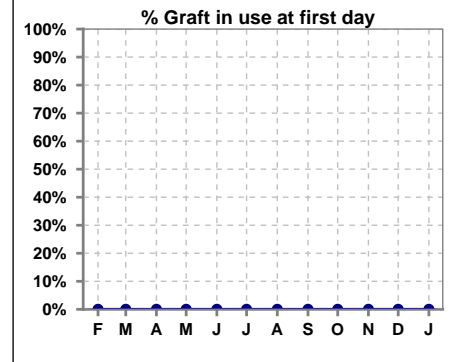
	Feb	Mar	Apr	May	Jun	Jul	Aug	Sep	Oct	Nov	Dec	Jan
# Patient	0	0	0	2	0	0	1	0	0	1	1	1
# Fistula in use	0	0	0	0	0	0	1	0	0	0	1	0
% Fistula in use	0%	0%	0%	0%	0%	0%	100%	0%	0%	0%	100%	0%



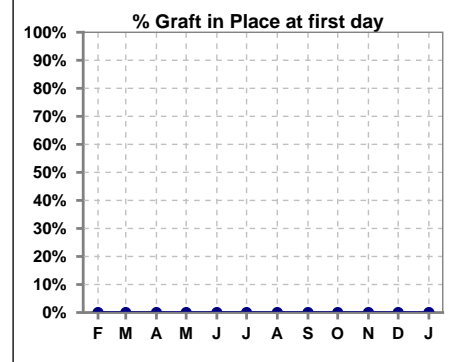
	Feb	Mar	Apr	May	Jun	Jul	Aug	Sep	Oct	Nov	Dec	Jan
# Patient	0	0	0	2	0	1	1	0	0	1	1	1
# Fistula in Place	0	0	0	0	0	1	1	0	0	0	1	0
% Fistula in Place	0%	0%	0%	0%	0%	100%	100%	0%	0%	0%	100%	0%



	Feb	Mar	Apr	May	Jun	Jul	Aug	Sep	Oct	Nov	Dec	Jan
# Patient	0	0	0	2	0	0	1	0	0	1	1	1
# Graft in use	0	0	0	0	0	0	0	0	0	0	0	0
% Graft in use	0%	0%	0%	0%	0%	0%	0%	0%	0%	0%	0%	0%

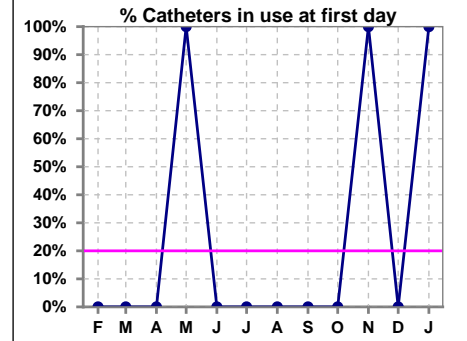


	Feb	Mar	Apr	May	Jun	Jul	Aug	Sep	Oct	Nov	Dec	Jan
# Patient	0	0	0	2	0	1	1	0	0	1	1	1
# Graft in Place	0	0	0	0	0	0	0	0	0	0	0	0
% Graft in Place	0%	0%	0%	0%	0%	0%	0%	0%	0%	0%	0%	0%

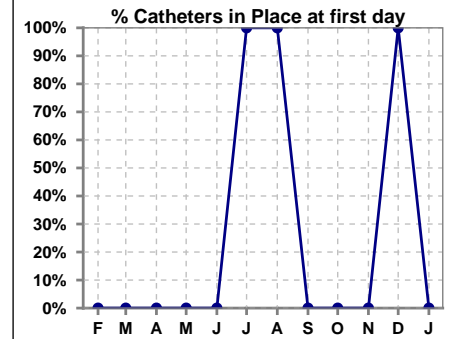


**IV. ACCESS - CONT. Access at first day for those patients that reached 90 days within the month.**

	Feb	Mar	Apr	May	Jun	Jul	Aug	Sep	Oct	Nov	Dec	Jan
# Patient	0	0	0	2	0	0	1	0	0	1	1	1
# Catheters in use	0	0	0	2	0	0	0	0	0	1	0	1
% Catheters in use	0%	0%	0%	100%	0%	0%	0%	0%	0%	100%	0%	100%



	Feb	Mar	Apr	May	Jun	Jul	Aug	Sep	Oct	Nov	Dec	Jan
# Patient	0	0	0	2	0	1	1	0	0	1	1	1
# Catheters in Place	0	0	0	0	0	1	1	0	0	0	1	0
% Catheters in Place	0%	0%	0%	0%	0%	100%	100%	0%	0%	0%	100%	0%

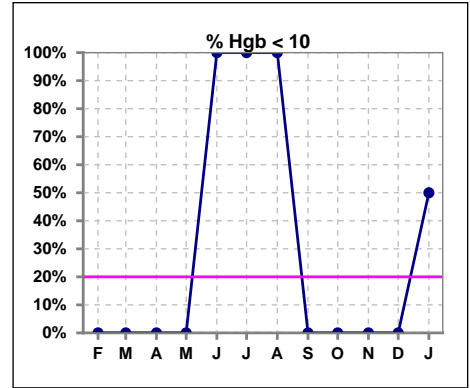




## V. ANEMIA

	Feb	Mar	Apr	May	Jun	Jul	Aug	Sep	Oct	Nov	Dec	Jan
# Hgb	0	0	0	1	1	1	1	0	1	1	1	2
# Hgb <= 10	0	0	0	0	1	1	1	0	0	0	0	1
Pop. Mean	0	0	0	12.7	7.4	9.5	9.5	0	11.0	11.8	11.4	9.7
Std. Deviation	0	0	0	0	0	0	0	0	0	0	0	2.4
% Hgb <= 10	0%	0%	0%	0%	100%	100%	100%	0%	0%	0%	0%	50%

Note: Excludes patients who received no ESA in month.



	Feb	Mar	Apr	May	Jun	Jul	Aug	Sep	Oct	Nov	Dec	Jan
# Hgb	0	0	0	1	1	1	1	0	1	1	1	2
# Hgb >= 12	0	0	0	1	0	0	0	0	0	0	0	0
Pop. Mean	0	0	0	12.7	7.4	9.5	9.5	0	11.0	11.8	11.4	9.7
Std. Deviation	0	0	0	0	0	0	0	0	0	0	0	2.4
% Hgb >= 12	0%	0%	0%	100%	0%	0%	0%	0%	0%	0%	0%	0%

Note: Excludes patients who received no ESA in month.

