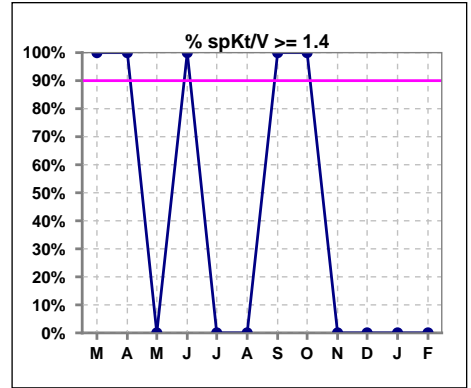
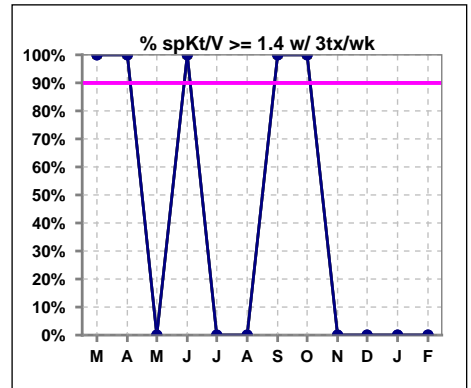


**I. ADEQUACY OF DIALYSIS**

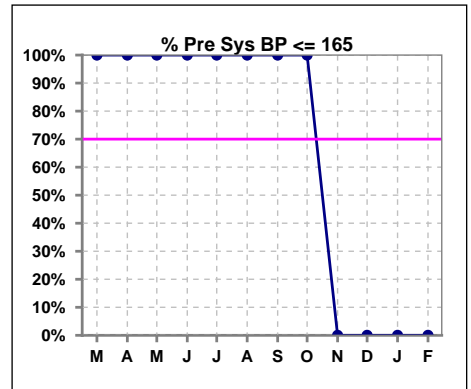
	Mar	Apr	May	Jun	Jul	Aug	Sep	Oct	Nov	Dec	Jan	Feb
# spKt/V	2	1	2	2	1	1	1	1	0	0	0	0
# spKt/V >= 1.4	2	1	0	2	0	0	1	1	0	0	0	0
Pop. Mean	1.66	1.71	1.28	1.44	1.39	0.81	1.52	1.82	0	0	0	0
Std. Deviation	0.03	0	0.09	0.01	0	0	0	0	0	0	0	0
<b>% spKt/V &gt;= 1.4</b>	<b>100%</b>	<b>100%</b>	<b>0%</b>	<b>100%</b>	<b>0%</b>	<b>0%</b>	<b>100%</b>	<b>100%</b>	<b>0%</b>	<b>0%</b>	<b>0%</b>	<b>0%</b>
<b>% spKt/V &gt;= 1.2</b>	<b>100%</b>	<b>100%</b>	<b>100%</b>	<b>100%</b>	<b>100%</b>	<b>0%</b>	<b>100%</b>	<b>100%</b>	<b>0%</b>	<b>0%</b>	<b>0%</b>	<b>0%</b>



	Mar	Apr	May	Jun	Jul	Aug	Sep	Oct	Nov	Dec	Jan	Feb
# spKt/V w/ 3tx/wk	2	1	1	2	1	1	1	1	0	0	0	0
# spKt/V >= 1.4 w/3tx/wk	2	1	0	2	0	0	1	1	0	0	0	0
Pop. Mean	1.66	1.71	1.34	1.44	1.39	0.81	1.52	1.82	0	0	0	0
Std. Deviation	0.03	0	0	0.01	0	0	0	0	0	0	0	0
<b>% spKt/V &gt;= 1.4 w/3tx/wk</b>	<b>100%</b>	<b>100%</b>	<b>0%</b>	<b>100%</b>	<b>0%</b>	<b>0%</b>	<b>100%</b>	<b>100%</b>	<b>0%</b>	<b>0%</b>	<b>0%</b>	<b>0%</b>



	Mar	Apr	May	Jun	Jul	Aug	Sep	Oct	Nov	Dec	Jan	Feb
# Pre Sys BP	2	1	2	2	1	1	1	1	0	0	0	0
# Pre Sys BP <= 165	2	1	2	2	1	1	1	1	0	0	0	0
Pop. Mean	151	156	140	138	150	146	121	127	0	0	0	0
Std. Deviation	9.2	0	9.2	1.4	0	0	0	0	0	0	0	0
<b>% Pre Sys BP &lt;= 165</b>	<b>100%</b>	<b>100%</b>	<b>100%</b>	<b>100%</b>	<b>100%</b>	<b>100%</b>	<b>100%</b>	<b>100%</b>	<b>0%</b>	<b>0%</b>	<b>0%</b>	<b>0%</b>

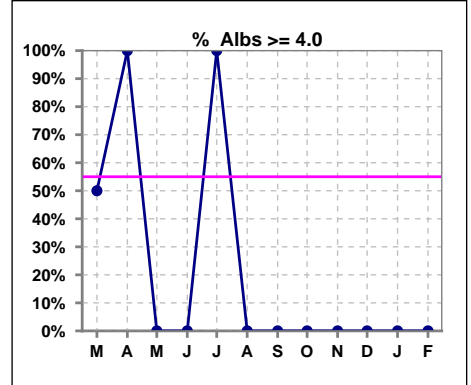


Methodology: a) All labs for 'Adequacy of Dialysis', 'Nutrition', 'Osteodystrophy', 'Anemia' and 'Diabetes' based on last value of month; b) BP's and #L processed are average of all values for month; c) Access data takes last access of month; d) Values for SGA and 'Infection Control' use most recent result.

\*Albumin values use BCG method - as of July 2001

**II. NUTRITION**

	Mar	Apr	May	Jun	Jul	Aug	Sep	Oct	Nov	Dec	Jan	Feb
# Albumin	2	1	2	2	1	1	1	1	0	0	0	0
# Albumin >= 4.0	1	1	0	0	1	0	0	0	0	0	0	0
Pop. Mean	4.1	4.1	3.6	3.8	4.3	3.9	3.7	3.9	0	0	0	0
Std. Deviation	0.42	0	0.35	0.14	0	0	0	0	0	0	0	0
% Alb >= 4.0	50%	100%	0%	0%	100%	0%	0%	0%	0%	0%	0%	0%

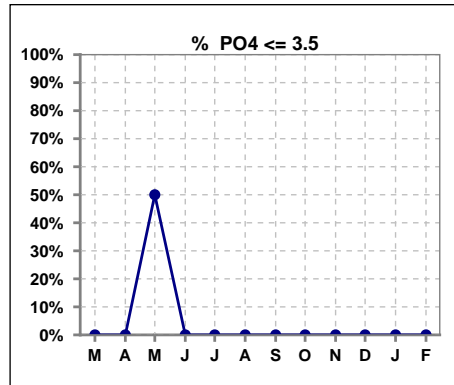


Methodology: a) All labs for 'Adequacy of Dialysis', 'Nutrition', 'Osteodystrophy', 'Anemia' and 'Diabetes' based on last value of month; b) BP's and #L processed are average of all values for month; c) Access data takes last access of month; d) Values for SGA and 'Infection Control' use most recent result.

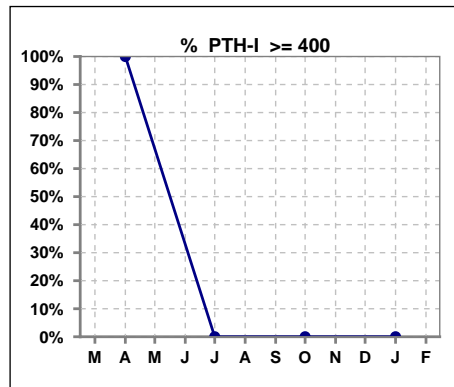
Lab methodology for PTH changed January 2012

**III. OSTEODYSTROPHY**

	Mar	Apr	May	Jun	Jul	Aug	Sep	Oct	Nov	Dec	Jan	Feb
# PO4	2	1	2	2	1	1	1	1	0	0	0	0
# PO4 <= 3.5	0	0	1	0	0	0	0	0	0	0	0	0
Pop. Mean	6.0	7.4	3.6	5.5	5.3	5.6	5.1	5.6	0	0	0	0
Std. Deviation	1.63	0	1.34	1.20	0	0	0	0	0	0	0	0
% PO4 <= 3.5	0%	0%	50%	0%	0%	0%	0%	0%	0%	0%	0%	0%



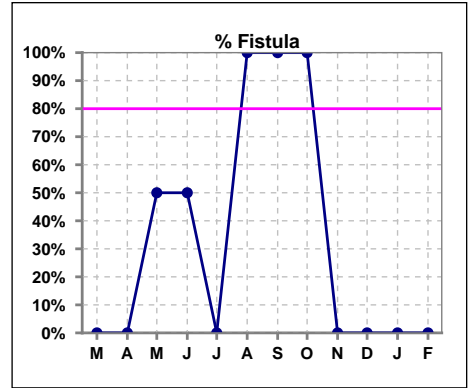
	Mar	Apr	May	Jun	Jul	Aug	Sep	Oct	Nov	Dec	Jan	Feb
# PTH-I		1			1			1			0	
# PTH-I >= 400		1			0			0			0	
Pop. Mean		445			197			197			0	
Std. Deviation		0			0			0			0	
% PTH-I >= 400		100%			0%			0%			0%	



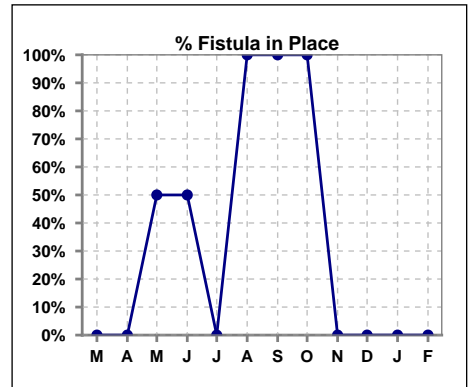
Methodology: a) All labs for 'Adequacy of Dialysis', 'Nutrition', 'Osteodystrophy', 'Anemia' and 'Diabetes' based on last value of month; b) BP's and #L processed are average of all values for month; c) Access data takes last access of month; d) Values for SGA and 'Infection Control' use most recent result.

**IV. ACCESS**

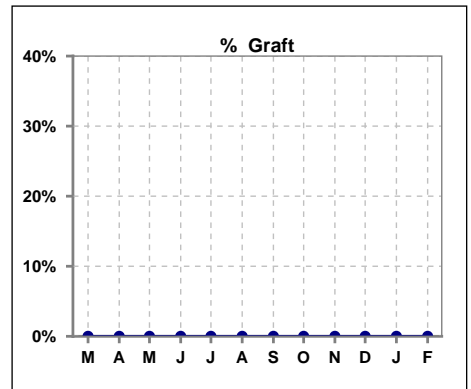
	Mar	Apr	May	Jun	Jul	Aug	Sep	Oct	Nov	Dec	Jan	Feb
# Access	2	1	2	2	1	1	1	1	0	0	0	0
# Fistula	0	0	1	1	0	1	1	1	0	0	0	0
% Fistula	0%	0%	50%	50%	0%	100%	100%	100%	0%	0%	0%	0%



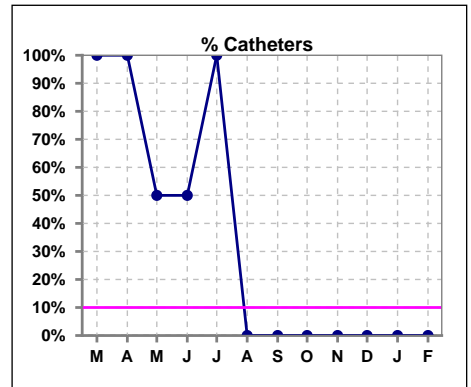
	Mar	Apr	May	Jun	Jul	Aug	Sep	Oct	Nov	Dec	Jan	Feb
# Patient	2	1	2	2	1	1	1	1	0	0	0	0
# Fistula in Place	0	0	1	1	0	1	1	1	0	0	0	0
% Fistula in Place	0%	0%	50%	50%	0%	100%	100%	100%	0%	0%	0%	0%



	Mar	Apr	May	Jun	Jul	Aug	Sep	Oct	Nov	Dec	Jan	Feb
# Access	2	1	2	2	1	1	1	1	0	0	0	0
# Graft	0	0	0	0	0	0	0	0	0	0	0	0
% Graft	0%	0%	0%	0%	0%	0%	0%	0%	0%	0%	0%	0%



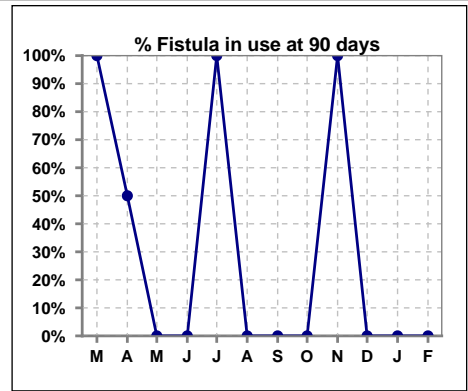
	Mar	Apr	May	Jun	Jul	Aug	Sep	Oct	Nov	Dec	Jan	Feb
# Access	2	1	2	2	1	1	1	1	0	0	0	0
# Catheters	2	1	1	1	1	0	0	0	0	0	0	0
% Catheters	100%	100%	50%	50%	100%	0%	0%	0%	0%	0%	0%	0%



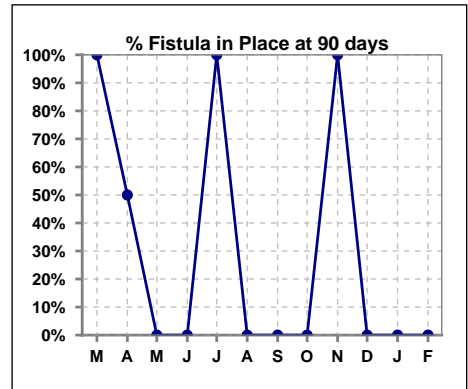
Methodology: a) All labs for 'Adequacy of Dialysis', 'Nutrition', 'Osteodystrophy', 'Anemia' and 'Diabetes' based on last value of month; b) BP's and #L processed are average of all values for month; c) Access data takes last access of month; d) Values for SGA and 'Infection Control' use most recent result.

**IV. ACCESS - CONT. Access at 90 days for those patients that reached 90 days within the month.**

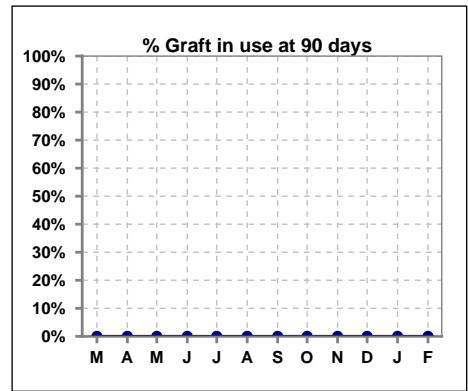
	Mar	Apr	May	Jun	Jul	Aug	Sep	Oct	Nov	Dec	Jan	Feb
# Patient	1	2	0	2	1	0	0	0	1	0	0	0
# Fistula in use	1	1	0	0	1	0	0	0	1	0	0	0
% Fistula in use	100%	50%	0%	0%	100%	0%	0%	0%	100%	0%	0%	0%



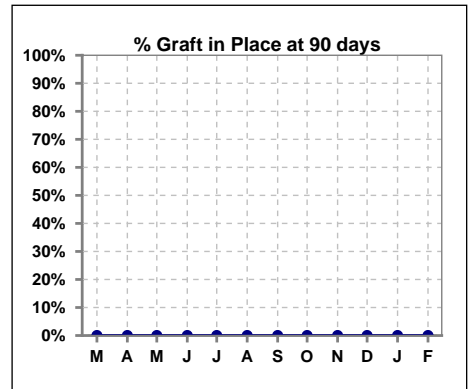
	Mar	Apr	May	Jun	Jul	Aug	Sep	Oct	Nov	Dec	Jan	Feb
# Patient	1	2	0	2	1	0	0	0	1	0	0	0
# Fistula in Place	1	1	0	0	1	0	0	0	1	0	0	0
% Fistula in Place	100%	50%	0%	0%	100%	0%	0%	0%	100%	0%	0%	0%



	Mar	Apr	May	Jun	Jul	Aug	Sep	Oct	Nov	Dec	Jan	Feb
# Patient	1	2	0	2	1	0	0	0	1	0	0	0
# Graft in use	0	0	0	0	0	0	0	0	0	0	0	0
% Graft in use	0%	0%	0%	0%	0%	0%	0%	0%	0%	0%	0%	0%



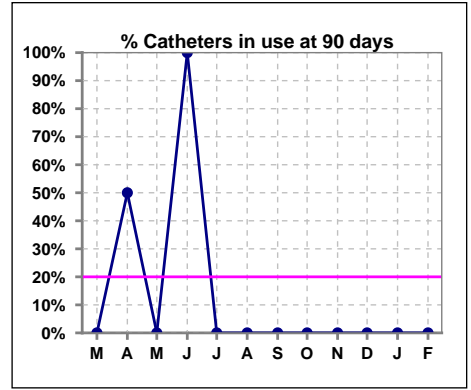
	Mar	Apr	May	Jun	Jul	Aug	Sep	Oct	Nov	Dec	Jan	Feb
# Patient	1	2	0	2	1	0	0	0	1	0	0	0
# Graft in Place	0	0	0	0	0	0	0	0	0	0	0	0
% Graft in Place	0%	0%	0%	0%	0%	0%	0%	0%	0%	0%	0%	0%



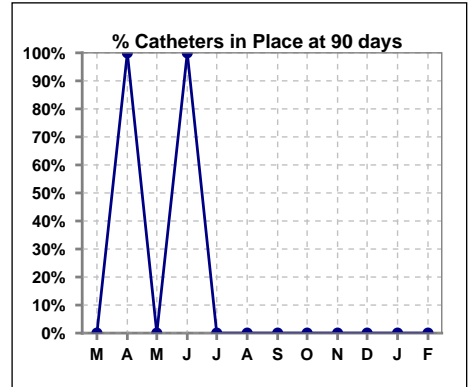
Methodology: a) All labs for 'Adequacy of Dialysis', 'Nutrition', 'Osteodystrophy', 'Anemia' and 'Diabetes' based on last value of month; b) BP's and #L processed are average of all values for month; c) Access data takes last access of month; d) Values for SGA and 'Infection Control' use most recent result.

**IV. ACCESS - CONT. Access at 90 days for those patients that reached 90 days within the month.**

	Mar	Apr	May	Jun	Jul	Aug	Sep	Oct	Nov	Dec	Jan	Feb
# Patient	1	2	0	2	1	0	0	0	1	0	0	0
# Catheters in use	0	1	0	2	0	0	0	0	0	0	0	0
% Catheters in use	0%	50%	0%	100%	0%	0%	0%	0%	0%	0%	0%	0%



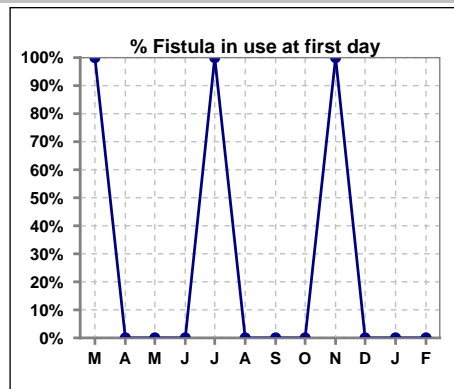
	Mar	Apr	May	Jun	Jul	Aug	Sep	Oct	Nov	Dec	Jan	Feb
# Patient	1	2	0	2	1	0	0	0	1	0	0	0
# Catheters in Place	0	2	0	2	0	0	0	0	0	0	0	0
% Catheters in Place	0%	100%	0%	100%	0%	0%	0%	0%	0%	0%	0%	0%



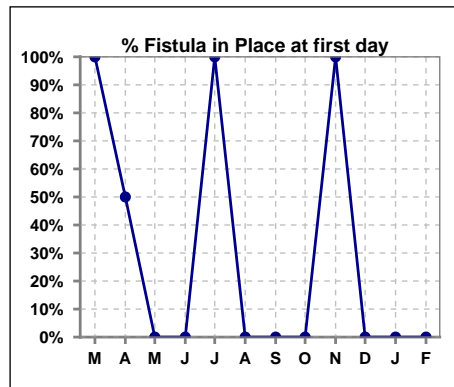
Methodology: a) All labs for 'Adequacy of Dialysis', 'Nutrition', 'Osteodystrophy', 'Anemia' and 'Diabetes' based on last value of month; b) BP's and #L processed are average of all values for month; c) Access data takes last access of month; d) Values for SGA and 'Infection Control' use most recent result.

**IV. ACCESS - CONT. Access at first day for those patients that reached 90 days within the month.**

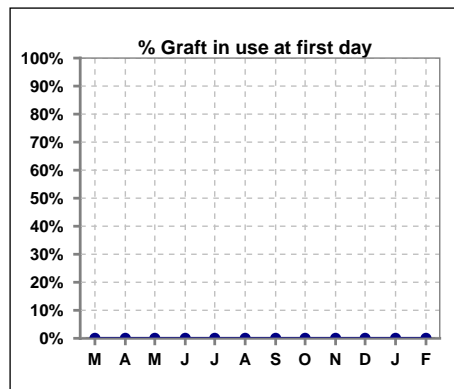
	Mar	Apr	May	Jun	Jul	Aug	Sep	Oct	Nov	Dec	Jan	Feb
# Patient	1	2	0	2	1	0	0	0	1	0	0	0
# Fistula in use	1	0	0	0	1	0	0	0	1	0	0	0
% Fistula in use	100%	0%	0%	0%	100%	0%	0%	0%	100%	0%	0%	0%



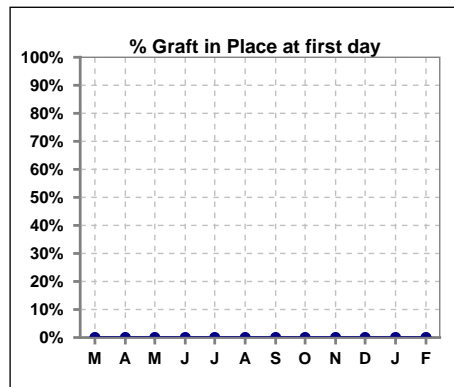
	Mar	Apr	May	Jun	Jul	Aug	Sep	Oct	Nov	Dec	Jan	Feb
# Patient	1	2	0	2	1	0	0	0	1	0	0	0
# Fistula in Place	1	1	0	0	1	0	0	0	1	0	0	0
% Fistula in Place	100%	50%	0%	0%	100%	0%	0%	0%	100%	0%	0%	0%



	Mar	Apr	May	Jun	Jul	Aug	Sep	Oct	Nov	Dec	Jan	Feb
# Patient	1	2	0	2	1	0	0	0	1	0	0	0
# Graft in use	0	0	0	0	0	0	0	0	0	0	0	0
% Graft in use	0%	0%	0%	0%	0%	0%	0%	0%	0%	0%	0%	0%



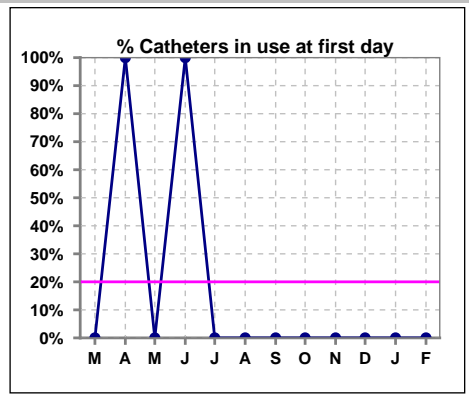
	Mar	Apr	May	Jun	Jul	Aug	Sep	Oct	Nov	Dec	Jan	Feb
# Patient	1	2	0	2	1	0	0	0	1	0	0	0
# Graft in Place	0	0	0	0	0	0	0	0	0	0	0	0
% Graft in Place	0%	0%	0%	0%	0%	0%	0%	0%	0%	0%	0%	0%



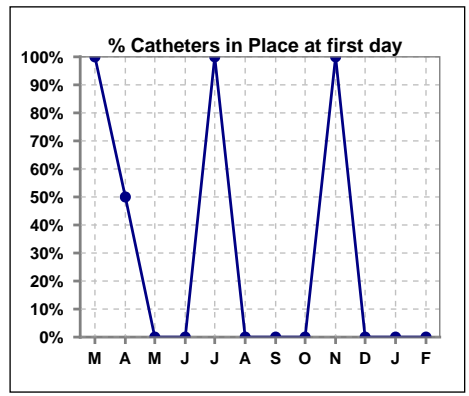
Methodology: a) All labs for 'Adequacy of Dialysis', 'Nutrition', 'Osteodystrophy', 'Anemia' and 'Diabetes' based on last value of month; b) BP's and #L processed are average of all values for month; c) Access data takes last access of month; d) Values for SGA and 'Infection Control' use most recent result.

**IV. ACCESS - CONT. Access at first day for those patients that reached 90 days within the month.**

	Mar	Apr	May	Jun	Jul	Aug	Sep	Oct	Nov	Dec	Jan	Feb
# Patient	1	2	0	2	1	0	0	0	1	0	0	0
# Catheters in use	0	2	0	2	0	0	0	0	0	0	0	0
% Catheters in use	0%	100%	0%	100%	0%	0%	0%	0%	0%	0%	0%	0%



	Mar	Apr	May	Jun	Jul	Aug	Sep	Oct	Nov	Dec	Jan	Feb
# Patient	1	2	0	2	1	0	0	0	1	0	0	0
# Catheters in Place	1	1	0	0	1	0	0	0	1	0	0	0
% Catheters in Place	100%	50%	0%	0%	100%	0%	0%	0%	100%	0%	0%	0%



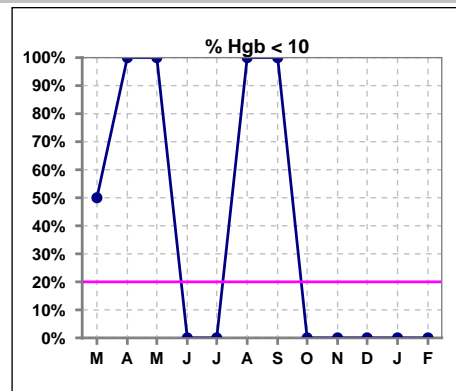
Methodology: a) All labs for 'Adequacy of Dialysis', 'Nutrition', 'Osteodystrophy', 'Anemia' and 'Diabetes' based on last value of month; b) BP's and #L processed are average of all values for month; c) Access data takes last access of month; d) Values for SGA and 'Infection Control' use most recent result.



**V. ANEMIA**

	Mar	Apr	May	Jun	Jul	Aug	Sep	Oct	Nov	Dec	Jan	Feb
# Hgb	2	1	2	2	1	1	1	1	0	0	0	0
# Hgb <= 10	1	1	2	0	0	1	1	0	0	0	0	0
Pop. Mean	10.2	10.0	8.1	10.8	12.0	8.8	9.3	10.8	0	0	0	0
Std. Deviation	1.4	0	1.6	0.1	0	0	0	0	0	0	0	0
% Hgb <= 10	50%	100%	100%	0%	0%	100%	100%	0%	0%	0%	0%	0%

Note: Excludes patients who received no ESA in month.



	Mar	Apr	May	Jun	Jul	Aug	Sep	Oct	Nov	Dec	Jan	Feb
# Hgb	2	1	2	2	1	1	1	1	0	0	0	0
# Hgb >= 12	0	0	0	0	1	0	0	0	0	0	0	0
Pop. Mean	10.2	10.0	8.1	10.8	12.0	8.8	9.3	10.8	0	0	0	0
Std. Deviation	1.4	0	1.6	0.1	0	0	0	0	0	0	0	0
% Hgb >= 12	0%	0%	0%	0%	100%	0%	0%	0%	0%	0%	0%	0%

Note: Excludes patients who received no ESA in month.

