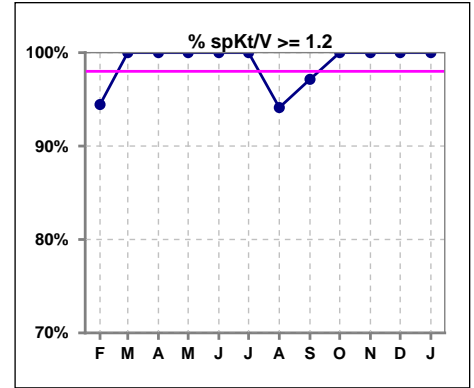
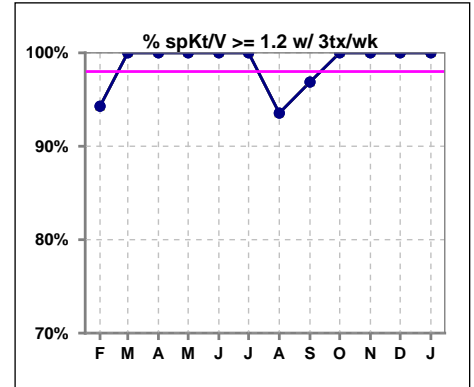


I. ADEQUACY OF DIALYSIS

	Feb	Mar	Apr	May	Jun	Jul	Aug	Sep	Oct	Nov	Dec	Jan
# spKt/V	36	33	34	36	35	34	34	35	36	36	35	38
# spKt/V >= 1.2	34	33	34	36	35	34	32	34	36	36	35	38
Pop. Mean	1.53	1.54	1.57	1.52	1.55	1.57	1.52	1.51	1.56	1.54	1.55	1.57
Std. Deviation	0.26	0.25	0.25	0.21	0.28	0.25	0.24	0.24	0.25	0.23	0.25	0.24
% spKt/V >= 1.2	94%	100%	100%	100%	100%	100%	94%	97%	100%	100%	100%	100%

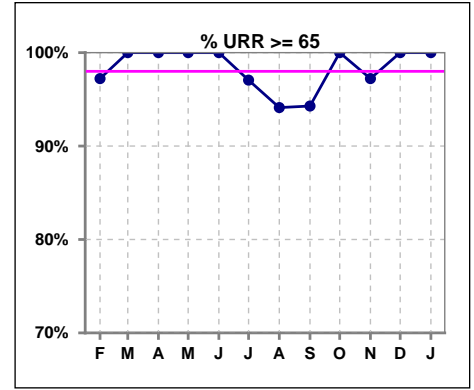


	Feb	Mar	Apr	May	Jun	Jul	Aug	Sep	Oct	Nov	Dec	Jan
# spKt/V w/ 3tx/wk	35	31	32	33	32	31	31	32	32	33	33	36
# spKt/V >= 1.2 w/3tx/wk	33	31	32	33	32	31	29	31	32	33	33	36
Pop. Mean	1.52	1.53	1.56	1.52	1.54	1.56	1.51	1.50	1.54	1.54	1.56	1.58
Std. Deviation	0.27	0.25	0.26	0.21	0.29	0.26	0.24	0.24	0.24	0.24	0.25	0.24
% >= 1.2 w/3tx/wk	94%	100%	100%	100%	100%	100%	94%	97%	100%	100%	100%	100%

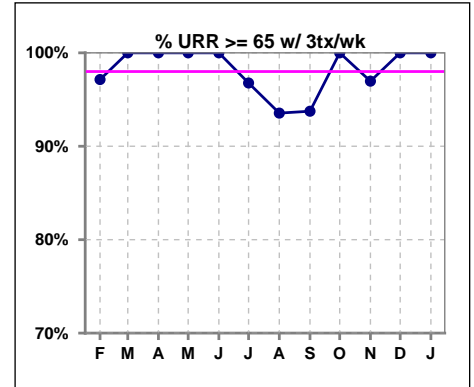


I. ADEQUACY OF DIALYSIS - CONT.

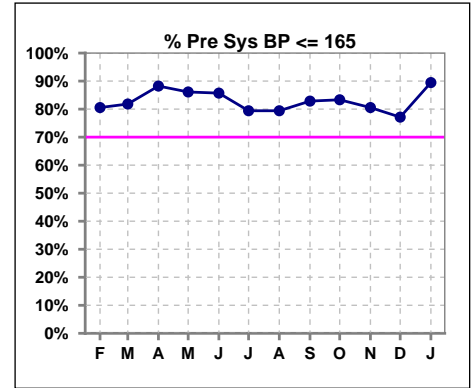
	Feb	Mar	Apr	May	Jun	Jul	Aug	Sep	Oct	Nov	Dec	Jan
# URR	36	33	34	36	35	34	34	35	36	36	35	38
# URR >= 65	35	33	34	36	35	33	32	33	36	35	35	38
Pop. Mean	73	74	74	73	74	74	73	73	74	74	74	74
Std. Deviation	6.35	4.80	4.72	4.18	5.42	4.99	5.22	5.32	5.08	5.01	4.99	4.45
% URR >= 65	97%	100%	100%	100%	100%	97%	94%	94%	100%	97%	100%	100%



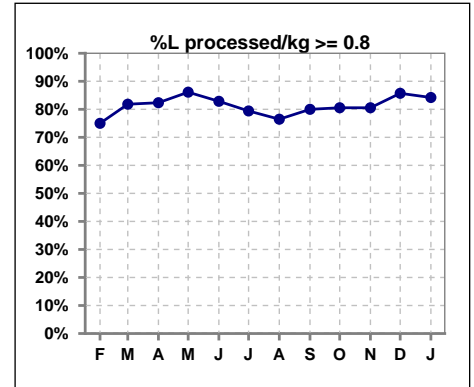
	Feb	Mar	Apr	May	Jun	Jul	Aug	Sep	Oct	Nov	Dec	Jan
# URR w/ 3tx/wk	35	31	32	33	32	31	31	32	32	33	33	36
# URR>=65 w/ 3tx/wk	34	31	32	33	32	30	29	30	32	32	33	36
Pop. Mean	73	74	74	73	74	74	73	73	74	74	74	75
Std. Deviation	6.38	4.84	4.78	4.27	5.56	5.12	5.37	5.38	4.84	5.15	5.04	4.40
% URR>=65 w/ 3tx/wk	97%	100%	100%	100%	100%	97%	94%	94%	100%	97%	100%	100%



	Feb	Mar	Apr	May	Jun	Jul	Aug	Sep	Oct	Nov	Dec	Jan
# Pre Sys BP	36	33	34	36	35	34	34	35	36	36	35	38
# Pre Sys BP <= 165	30	27	30	31	30	28	28	30	30	29	27	34
Pop. Mean	147	149	150	148	145	147	146	149	149	150	150	146
Std. Deviation	18.9	20.9	19.8	21.4	21.8	18.4	21.1	19.0	20.3	20.6	18.0	19.3
% Pre Sys BP <=165	81%	82%	88%	86%	86%	79%	79%	83%	83%	81%	77%	89%



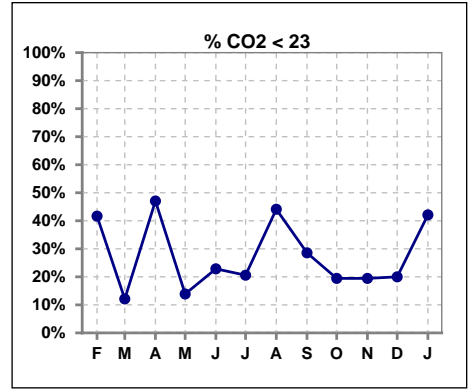
	Feb	Mar	Apr	May	Jun	Jul	Aug	Sep	Oct	Nov	Dec	Jan
# L processed/kg	36	33	34	36	35	34	34	35	36	36	35	38
# L processed/kg>=0.8	27	27	28	31	29	27	26	28	29	29	30	32
Pop. Mean	1	1	1	1	1	1	1	1	1	1	1	1
Std. Deviation	0.3	0.2	0.2	0.2	0.2	0.2	0.2	0.2	0.3	0.3	0.3	0.3
% L processed/kg>=0.8	75%	82%	82%	86%	83%	79%	76%	80%	81%	81%	86%	84%



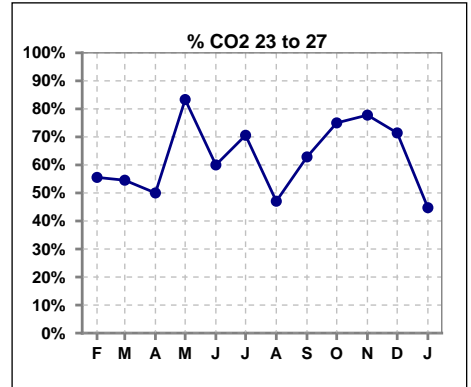
Methodology: a) All labs for 'Adequacy of Dialysis', 'Nutrition', 'Osteodystrophy', 'Anemia' and 'Diabetes' based on last value of month; b) BP's and #L processed are average of all values for month; c) Access data takes last access of month; d) Values for SGA and 'Infection Control' use most recent result.

I. ADEQUACY OF DIALYSIS - CONT.

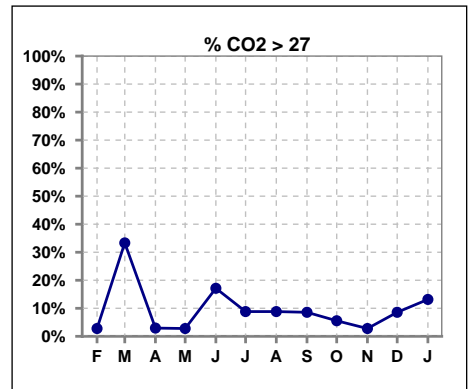
	Feb	Mar	Apr	May	Jun	Jul	Aug	Sep	Oct	Nov	Dec	Jan
# CO2	36	33	34	36	35	34	34	35	36	36	35	38
# CO2 < 23	15	4	16	5	8	7	15	10	7	7	7	16
Pop. Mean	23	26	23	25	25	24	23	24	24	24	24	23
Std. Deviation	3.20	2.68	3.48	2.21	2.89	2.73	3.43	3.65	2.45	2.49	3.07	3.75
% CO2 < 23	42%	12%	47%	14%	23%	21%	44%	29%	19%	19%	20%	42%



	Feb	Mar	Apr	May	Jun	Jul	Aug	Sep	Oct	Nov	Dec	Jan
# CO2	36	33	34	36	35	34	34	35	36	36	35	38
# CO2 23 to 27	20	18	17	30	21	24	16	22	27	28	25	17
Pop. Mean	23	26	23	25	25	24	23	24	24	24	24	23
Std. Deviation	3.20	2.68	3.48	2.21	2.89	2.73	3.43	3.65	2.45	2.49	3.07	3.75
% CO2 23 to 27	56%	55%	50%	83%	60%	71%	47%	63%	75%	78%	71%	45%



	Feb	Mar	Apr	May	Jun	Jul	Aug	Sep	Oct	Nov	Dec	Jan
# CO2	36	33	34	36	35	34	34	35	36	36	35	38
# CO2 > 27	1	11	1	1	6	3	3	3	2	1	3	5
Pop. Mean	23	26	23	25	25	24	23	24	24	24	24	23
Std. Deviation	3.20	2.68	3.48	2.21	2.89	2.73	3.43	3.65	2.45	2.49	3.07	3.75
% CO2 > 27	3%	33%	3%	3%	17%	9%	9%	9%	6%	3%	9%	13%

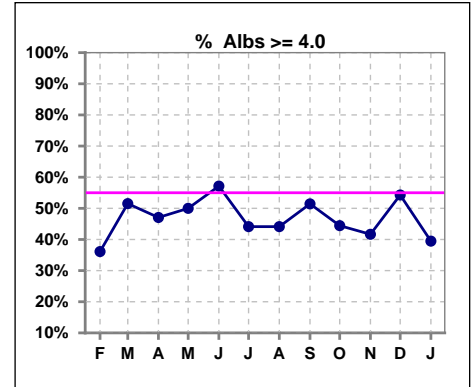


Enumclaw Kidney Center - Center Hemodialysis
Quality Assurance Reports
 Through period ending Jan. 31, 2026

*Albumin values use BCG method - as of July 2001

II. NUTRITION

	Feb	Mar	Apr	May	Jun	Jul	Aug	Sep	Oct	Nov	Dec	Jan
# Albumin	36	33	34	36	35	34	34	35	36	36	35	38
# Albumin >= 4.0	13	17	16	18	20	15	15	18	16	15	19	15
Pop. Mean	3.8	3.9	3.9	3.9	3.9	3.9	3.9	3.9	3.8	3.9	3.9	3.9
Std. Deviation	0.38	0.30	0.38	0.37	0.39	0.45	0.34	0.34	0.42	0.37	0.39	0.36
% Alb >= 4.0	36%	52%	47%	50%	57%	44%	44%	51%	44%	42%	54%	39%

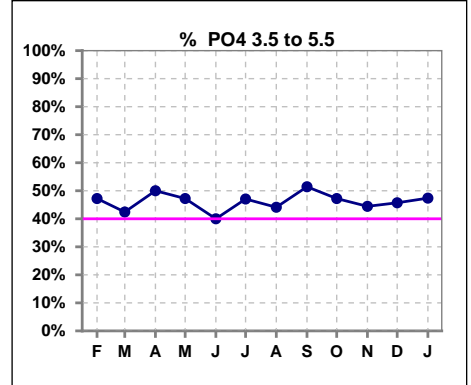


Methodology: a) All labs for 'Adequacy of Dialysis', 'Nutrition', 'Osteodystrophy', 'Anemia' and 'Diabetes' based on last value of month; b) BP's and #L processed are average of all values for month; c) Access data takes last access of month; d) Values for SGA and 'Infection Control' use most recent result.

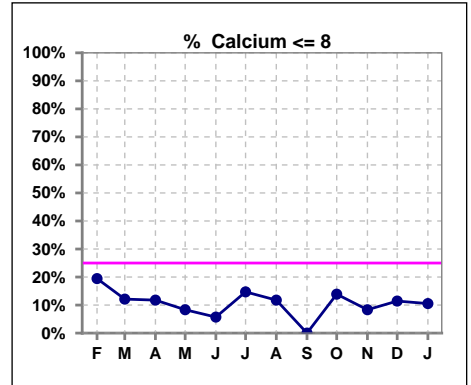
Lab methodology for PTH changed January 2012

III. OSTEODYSTROPHY

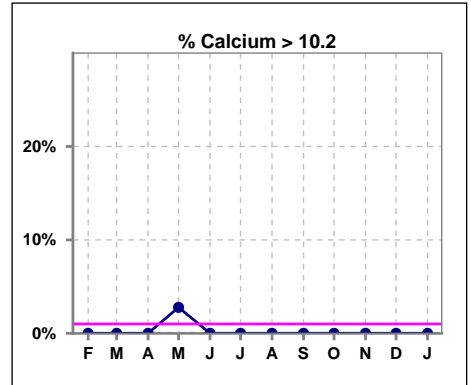
	Feb	Mar	Apr	May	Jun	Jul	Aug	Sep	Oct	Nov	Dec	Jan
# PO4	36	33	34	36	35	34	34	35	36	36	35	38
# PO4 3.5 to 5.5	17	14	17	17	14	16	15	18	17	16	16	18
Pop. Mean	5.8	5.6	5.8	5.7	5.9	5.4	5.6	5.6	5.4	5.8	6.0	6.0
Std. Deviation	1.38	1.14	1.52	1.36	1.41	1.34	1.32	1.54	1.44	1.46	1.57	1.62
% PO4 3.5 to 5.5	47%	42%	50%	47%	40%	47%	44%	51%	47%	44%	46%	47%



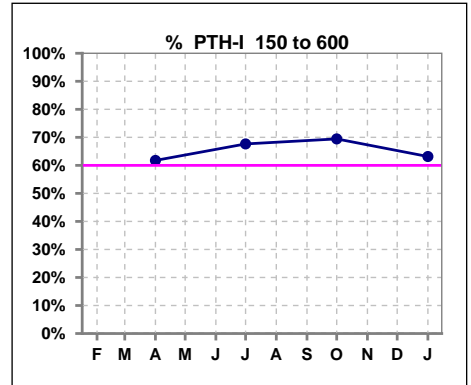
	Feb	Mar	Apr	May	Jun	Jul	Aug	Sep	Oct	Nov	Dec	Jan
# Calcium	36	33	34	36	35	34	34	35	36	36	35	38
# Calcium <= 8	7	4	4	3	2	5	4	0	5	3	4	4
Pop. Mean	8.8	8.9	8.9	8.9	8.9	8.8	8.8	9.1	8.8	8.9	8.9	9.0
Std. Deviation	0.77	0.62	0.88	0.68	0.56	0.72	0.65	0.52	0.72	0.62	0.70	0.61
% Calcium <= 8	19%	12%	12%	8%	6%	15%	12%	0%	14%	8%	11%	11%



	Feb	Mar	Apr	May	Jun	Jul	Aug	Sep	Oct	Nov	Dec	Jan
# Calcium	36	33	34	36	35	34	34	35	36	36	35	38
# Calcium > 10.2	0	0	0	1	0	0	0	0	0	0	0	0
Pop. Mean	8.8	8.9	8.9	8.9	8.9	8.8	8.8	9.1	8.8	8.9	8.9	9.0
Std. Deviation	0.77	0.62	0.88	0.68	0.56	0.72	0.65	0.52	0.72	0.62	0.70	0.61
% Calcium > 10.2	0%	0%	0%	3%	0%	0%	0%	0%	0%	0%	0%	0%



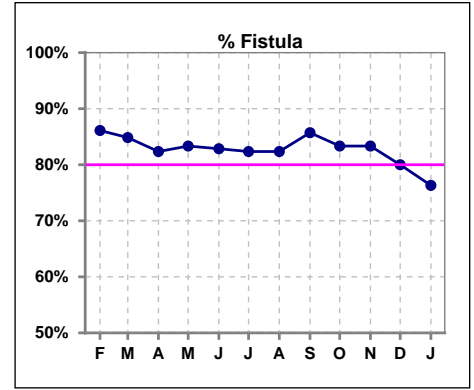
	Feb	Mar	Apr	May	Jun	Jul	Aug	Sep	Oct	Nov	Dec	Jan
# PTH-I			34			34			36			38
# PTH-I 150 to 600			21			23			25			24
Pop. Mean			575			588			465			394
Std. Deviation			701			686			285			227
% PTH-I 150 to 600			62%			68%			69%			63%



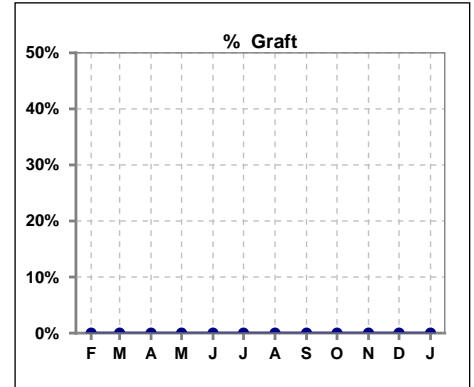
Methodology: a) All labs for 'Adequacy of Dialysis', 'Nutrition', 'Osteodystrophy', 'Anemia' and 'Diabetes' based on last value of month; b) BP's and #L processed are average of all values for month; c) Access data takes last access of month; d) Values for SGA and 'Infection Control' use most recent result.

IV. ACCESS

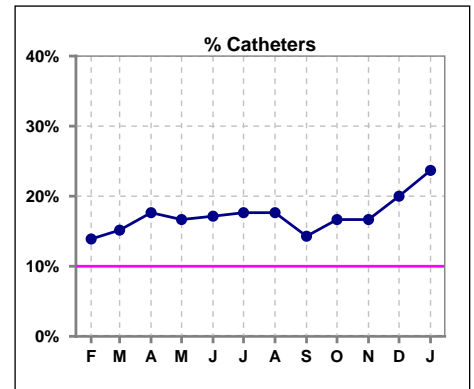
	Feb	Mar	Apr	May	Jun	Jul	Aug	Sep	Oct	Nov	Dec	Jan
# Access	36	33	34	36	35	34	34	35	36	36	35	38
# Fistula	31	28	28	30	29	28	28	30	30	30	28	29
% Fistula	86%	85%	82%	83%	83%	82%	82%	86%	83%	83%	80%	76%



	Feb	Mar	Apr	May	Jun	Jul	Aug	Sep	Oct	Nov	Dec	Jan
# Access	36	33	34	36	35	34	34	35	36	36	35	38
# Graft	0	0	0	0	0	0	0	0	0	0	0	0
% Graft	0%	0%	0%	0%	0%	0%	0%	0%	0%	0%	0%	0%



	Feb	Mar	Apr	May	Jun	Jul	Aug	Sep	Oct	Nov	Dec	Jan
# Access	36	33	34	36	35	34	34	35	36	36	35	38
# Catheters	5	5	6	6	6	6	6	5	6	6	7	9
% Catheters	14%	15%	18%	17%	17%	18%	18%	14%	17%	17%	20%	24%



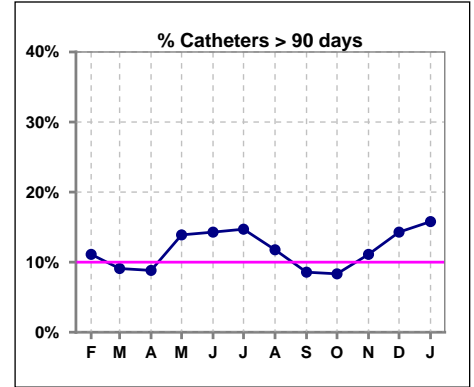
Methodology: a) All labs for 'Adequacy of Dialysis', 'Nutrition', 'Osteodystrophy', 'Anemia' and 'Diabetes' based on last value of month; b) BP's and #L processed are average of all values for month; c) Access data takes last access of month; d) Values for SGA and 'Infection Control' use most recent result.

IV. ACCESS - CONT.

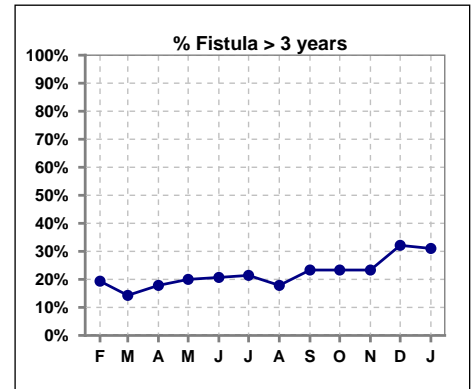
Catheters > 90 days

	Feb	Mar	Apr	May	Jun	Jul	Aug	Sep	Oct	Nov	Dec	Jan
# Access	36	33	34	36	35	34	34	35	36	36	35	38
# Catheters	4	3	3	5	5	5	4	3	3	4	5	6
% Catheters	11%	9%	9%	14%	14%	15%	12%	9%	8%	11%	14%	16%

Definition: Catheter in use on last treatment of the month



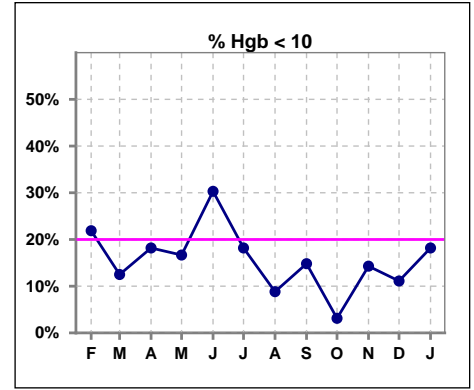
	Feb	Mar	Apr	May	Jun	Jul	Aug	Sep	Oct	Nov	Dec	Jan
# Fistula	31	28	28	30	29	28	28	30	30	30	28	29
# Fistula > 3 yrs	6	4	5	6	6	6	5	7	7	7	9	9
% Fistula > 3 yrs	19%	14%	18%	20%	21%	21%	18%	23%	23%	23%	32%	31%



V. ANEMIA

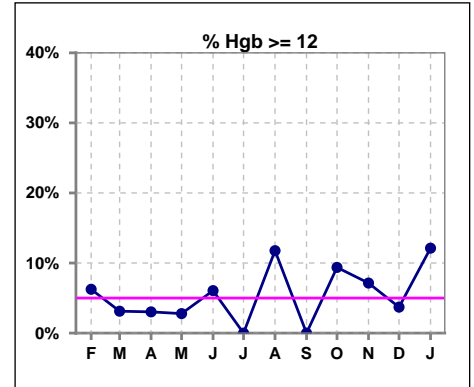
	Feb	Mar	Apr	May	Jun	Jul	Aug	Sep	Oct	Nov	Dec	Jan
# Hgb	32	32	33	36	33	33	34	27	32	28	27	33
# Hgb < 10	7	4	6	6	10	6	3	4	1	4	3	6
Pop. Mean	10.8	10.8	10.8	10.7	10.6	10.6	11.2	10.8	11.2	10.9	10.8	10.9
Std. Deviation	0.9	0.8	0.9	0.9	1.3	1.0	1.0	1.0	0.7	0.9	0.7	1.1
% Hgb < 10	22%	13%	18%	17%	30%	18%	9%	15%	3%	14%	11%	18%

Note: Excludes patients who received no ESA in month.



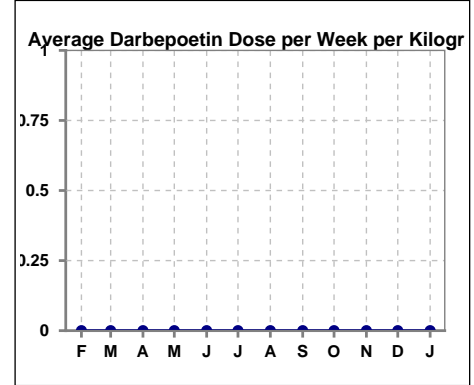
	Feb	Mar	Apr	May	Jun	Jul	Aug	Sep	Oct	Nov	Dec	Jan
# Hgb	32	32	33	36	33	33	34	27	32	28	27	33
# Hgb >= 12	2	1	1	1	2	0	4	0	3	2	1	4
Pop. Mean	10.8	10.8	10.8	10.7	10.6	10.6	11.2	10.8	11.2	10.9	10.8	10.9
Std. Deviation	0.9	0.8	0.9	0.9	1.3	1.0	1.0	1.0	0.7	0.9	0.7	1.1
% Hgb >= 12	6%	3%	3%	3%	6%	0%	12%	0%	9%	7%	4%	12%

Note: Excludes patients who received no ESA in month.



Average Darbepoetin Dose per Week per Kilogram

	Feb	Mar	Apr	May	Jun	Jul	Aug	Sep	Oct	Nov	Dec	Jan
# Average Darbepoetin	0	0	0	0	0	0	0	0	0	0	0	0

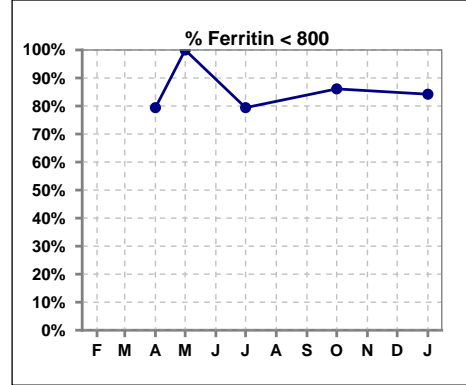


Methodology: a) All labs for 'Adequacy of Dialysis', 'Nutrition', 'Osteodystrophy', 'Anemia' and 'Diabetes' based on last value of month; b) BP's and #L processed are average of all values for month; c) Access data takes last access of month; d) Values for SGA and 'Infection Control' use most recent result.

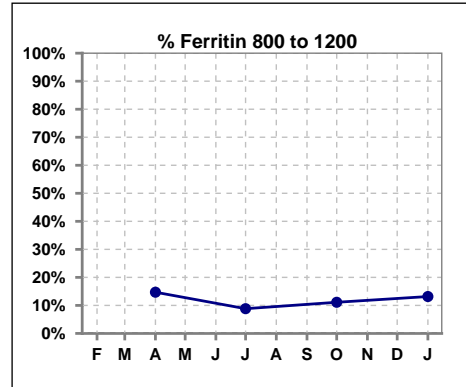
V. ANEMIA - CONT.

Iron Profile

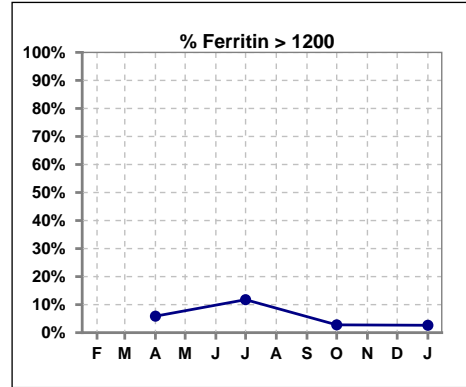
	Feb	Mar	Apr	May	Jun	Jul	Aug	Sep	Oct	Nov	Dec	Jan
# Ferritin			34	1		34			36			38
# Ferritin < 800			27	1		27			31			32
Pop. Mean			581	657		608			509			511
Std. Deviation			343	0		347			293			365
% Ferritin < 800			79%	100%		79%			86%			84%



	Feb	Mar	Apr	May	Jun	Jul	Aug	Sep	Oct	Nov	Dec	Jan
# Ferritin			34	1		34			36			38
# Ferritin 800 to 1200			5			3			4			5
Pop. Mean			581	657		608			509			511
Std. Deviation			343	0		347			293			365
% Ferritin 800 to 1200			15%			9%			11%			13%

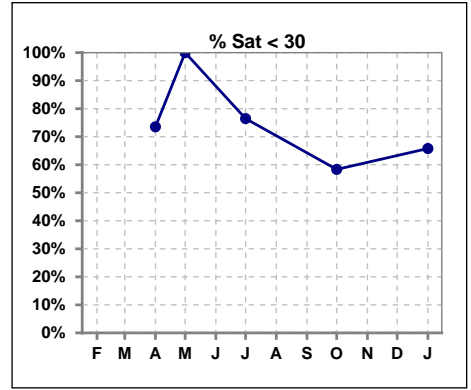


	Feb	Mar	Apr	May	Jun	Jul	Aug	Sep	Oct	Nov	Dec	Jan
# Ferritin			34	1		34			36			38
# Ferritin > 1200			2			4			1			1
Pop. Mean			581	657		608			509			511
Std. Deviation			343	0		347			293			365
% Ferritin > 1200			6%			12%			3%			3%

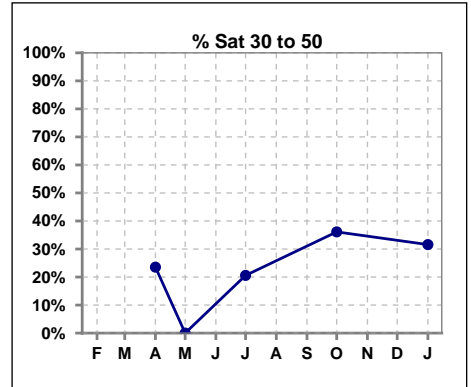


V. ANEMIA - CONT.

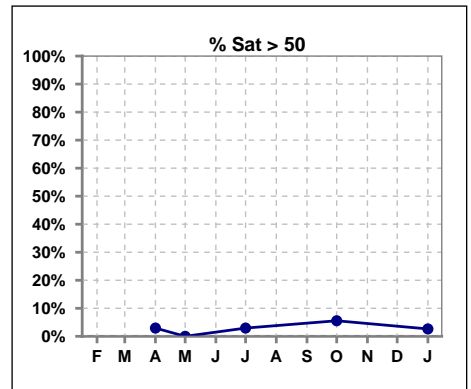
	Feb	Mar	Apr	May	Jun	Jul	Aug	Sep	Oct	Nov	Dec	Jan
# % Sat			34	1		34			36			38
# % Sat < 30			25	1		26			21			25
Pop. Mean			26	10		26			29			26
Std. Deviation			11	0		11			12			11
% % Sat < 30			74%	100%		76%			58%			66%



	Feb	Mar	Apr	May	Jun	Jul	Aug	Sep	Oct	Nov	Dec	Jan
# % Sat			34	1		34			36			38
# % Sat 30 to 50			8	0		7			13			12
Pop. Mean			26	10		26			29			26
Std. Deviation			11	0		11			12			11
% % Sat 30 to 50			24%	0%		21%			36%			32%



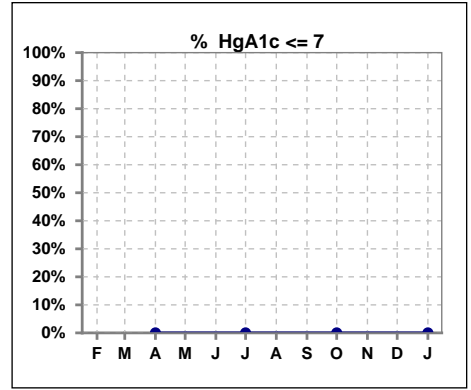
	Feb	Mar	Apr	May	Jun	Jul	Aug	Sep	Oct	Nov	Dec	Jan
# % Sat			34	1		34			36			38
# % Sat > 50			1	0		1			2			1
Pop. Mean			26	10		26			29			26
Std. Deviation			11	0		11			12			11
% % Sat > 50			3%	0%		3%			6%			3%



Methodology: a) All labs for 'Adequacy of Dialysis', 'Nutrition', 'Osteodystrophy', 'Anemia' and 'Diabetes' based on last value of month; b) BP's and #L processed are average of all values for month; c) Access data takes last access of month; d) Values for SGA and 'Infection Control' use most recent result.

VI. Diabetes

	Feb	Mar	Apr	May	Jun	Jul	Aug	Sep	Oct	Nov	Dec	Jan
# HgA1c			0			0			0			0
# HgA1c <= 7			0			0			0			0
Pop. Mean			0			0			0			0
Std. Deviation			0			0			0			0
% HgA1c <= 7			0%			0%			0%			0%

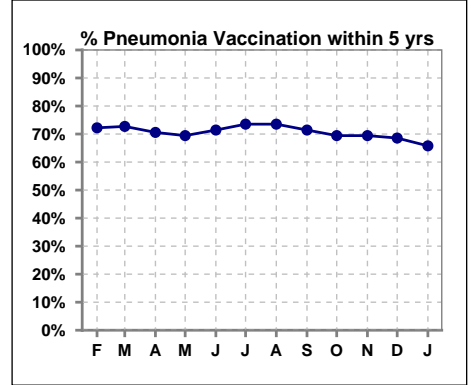


Methodology: a) All labs for 'Adequacy of Dialysis', 'Nutrition', 'Osteodystrophy', 'Anemia' and 'Diabetes' based on last value of month; b) BP's and #L processed are average of all values for month; c) Access data takes last access of month; d) Values for SGA and 'Infection Control' use most recent result.

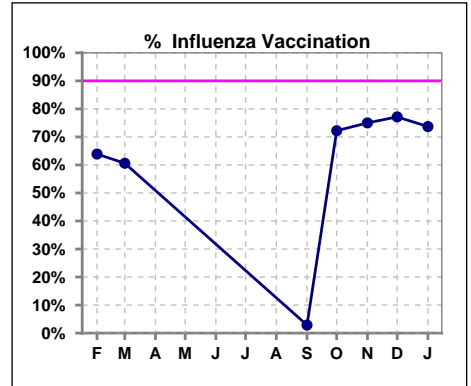
VII. Infection Control

Pneumonia vaccination within the past five years

	Feb	Mar	Apr	May	Jun	Jul	Aug	Sep	Oct	Nov	Dec	Jan
# Patient	36	33	34	36	35	34	34	35	36	36	35	38
# Pneumonia	26	24	24	25	25	25	25	25	25	25	24	25
% Pneumonia	72%	73%	71%	69%	71%	74%	74%	71%	69%	69%	69%	66%



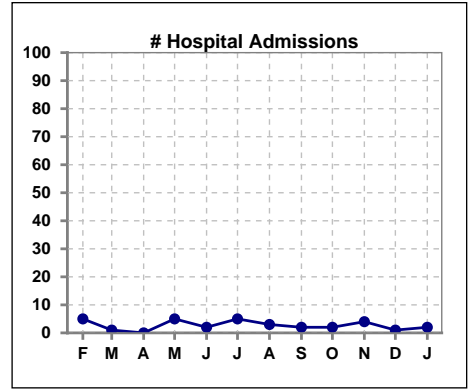
	Feb	Mar	Apr	May	Jun	Jul	Aug	Sep	Oct	Nov	Dec	Jan
# Patient	36	33						35	36	36	35	38
# Influenza	23	20						1	26	27	27	28
% Influenza	64%	61%						3%	72%	75%	77%	74%



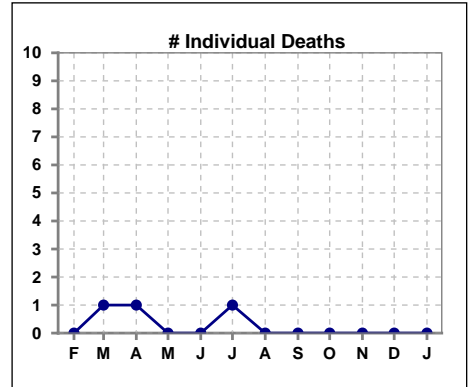
Methodology: a) All labs for 'Adequacy of Dialysis', 'Nutrition', 'Osteodystrophy', 'Anemia' and 'Diabetes' based on last value of month; b) BP's and #L processed are average of all values for month; c) Access data takes last access of month; d) Values for SGA and 'Infection Control' use most recent result.

VIII. Outcome measures

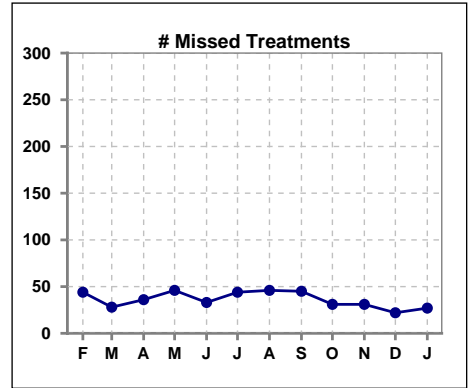
	Feb	Mar	Apr	May	Jun	Jul	Aug	Sep	Oct	Nov	Dec	Jan
# Patient	36	33	34	36	35	34	34	35	36	36	35	38
# Hospital Admissions	5	1	0	5	2	5	3	2	2	4	1	2



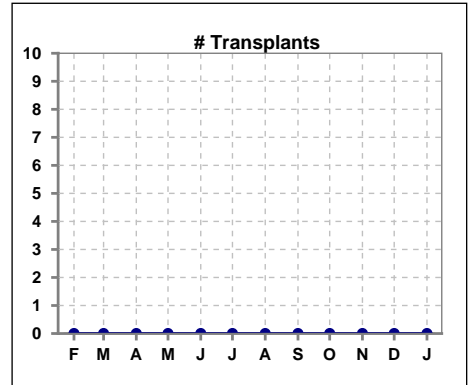
	Feb	Mar	Apr	May	Jun	Jul	Aug	Sep	Oct	Nov	Dec	Jan
# Patient	36	33	34	36	35	34	34	35	36	36	35	38
# Individual Deaths	0	1	1	0	0	1	0	0	0	0	0	0



	Feb	Mar	Apr	May	Jun	Jul	Aug	Sep	Oct	Nov	Dec	Jan
# Patient	36	33	34	36	35	34	34	35	36	36	35	38
# Missed Treatments	44	28	36	46	33	44	46	45	31	31	22	27



	Feb	Mar	Apr	May	Jun	Jul	Aug	Sep	Oct	Nov	Dec	Jan
# Patient	36	33	34	36	35	34	34	35	36	36	35	38
# Transplants	0	0	0	0	0	0	0	0	0	0	0	0



Methodology: a) All labs for 'Adequacy of Dialysis', 'Nutrition', 'Osteodystrophy', 'Anemia' and 'Diabetes' based on last value of month; b) BP's and #L processed are average of all values for month; c) Access data takes last access of month; d) Values for SGA and 'Infection Control' use most recent result.