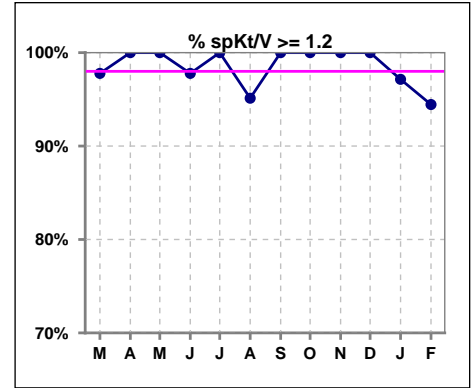
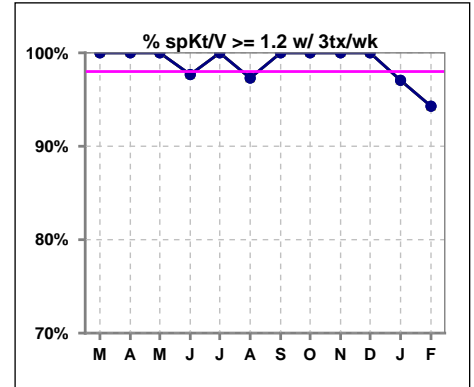


I. ADEQUACY OF DIALYSIS

	Mar	Apr	May	Jun	Jul	Aug	Sep	Oct	Nov	Dec	Jan	Feb
# spKt/V	45	44	43	45	43	41	41	38	36	35	35	36
# spKt/V >= 1.2	44	44	43	44	43	39	41	38	36	35	34	34
Pop. Mean	1.57	1.61	1.59	1.53	1.50	1.47	1.47	1.53	1.55	1.52	1.54	1.53
Std. Deviation	0.27	0.24	0.25	0.24	0.21	0.24	0.19	0.24	0.25	0.23	0.28	0.26
% spKt/V >= 1.2	98%	100%	100%	98%	100%	95%	100%	100%	100%	100%	97%	94%



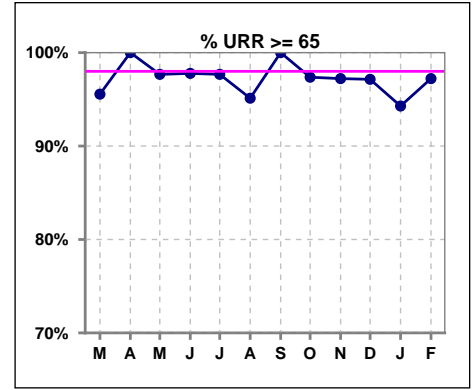
	Mar	Apr	May	Jun	Jul	Aug	Sep	Oct	Nov	Dec	Jan	Feb
# spKt/V w/ 3tx/wk	43	42	40	43	40	37	38	37	35	34	34	35
# spKt/V >= 1.2 w/3tx/wk	43	42	40	42	40	36	38	37	35	34	33	33
Pop. Mean	1.58	1.61	1.60	1.53	1.50	1.49	1.47	1.52	1.54	1.51	1.53	1.52
Std. Deviation	0.27	0.24	0.24	0.24	0.21	0.25	0.18	0.24	0.25	0.23	0.28	0.27
% >= 1.2 w/3tx/wk	100%	100%	100%	98%	100%	97%	100%	100%	100%	100%	97%	94%



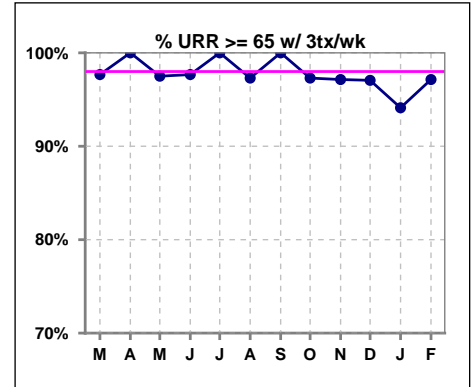
Methodology: a) All labs for 'Adequacy of Dialysis', 'Nutrition', 'Osteodystrophy', 'Anemia' and 'Diabetes' based on last value of month; b) BP's and #L processed are average of all values for month; c) Access data takes last access of month; d) Values for SGA and 'Infection Control' use most recent result.

I. ADEQUACY OF DIALYSIS - CONT.

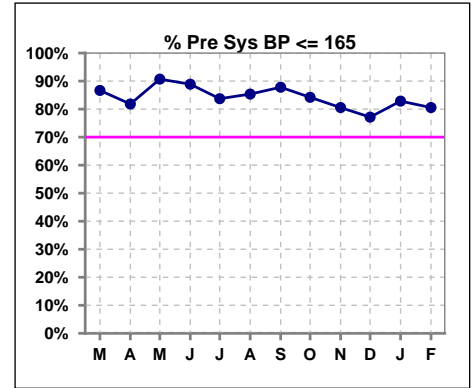
	Mar	Apr	May	Jun	Jul	Aug	Sep	Oct	Nov	Dec	Jan	Feb
# URR	45	44	43	45	43	41	41	38	36	35	35	36
# URR >= 65	43	44	42	44	42	39	41	37	35	34	33	35
Pop. Mean	74	75	75	73	73	72	72	73	74	73	73	73
Std. Deviation	5.66	4.71	5.34	4.88	4.53	5.43	4.31	4.89	5.35	4.67	6.49	6.35
% URR >= 65	96%	100%	98%	98%	98%	95%	100%	97%	97%	97%	94%	97%



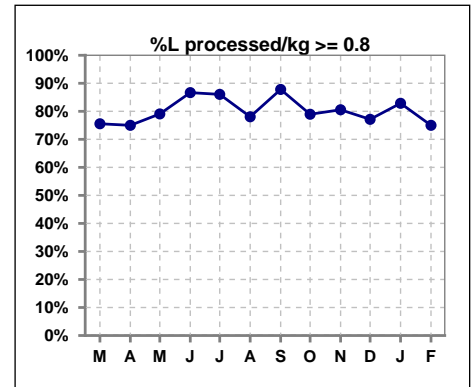
	Mar	Apr	May	Jun	Jul	Aug	Sep	Oct	Nov	Dec	Jan	Feb
# URR w/ 3tx/wk	43	42	40	43	40	37	38	37	35	34	34	35
# URR>=65 w/ 3tx/wk	42	42	39	42	40	36	38	36	34	33	32	34
Pop. Mean	74	75	75	73	73	73	72	73	74	73	73	73
Std. Deviation	5.40	4.72	5.12	4.83	4.36	5.36	4.10	4.91	5.42	4.70	6.53	6.38
% URR>=65 w/ 3tx/wk	98%	100%	98%	98%	100%	97%	100%	97%	97%	97%	94%	97%



	Mar	Apr	May	Jun	Jul	Aug	Sep	Oct	Nov	Dec	Jan	Feb
# Pre Sys BP	45	44	43	45	43	41	41	38	36	35	35	36
# Pre Sys BP <= 165	40	36	40	40	39	35	36	32	29	27	29	30
Pop. Mean	145	144	142	143	143	146	144	145	149	150	149	147
Std. Deviation	18.7	20.5	19.9	18.6	20.5	22.1	20.9	18.2	20.1	18.9	19.5	18.9
%Pre Sys BP <=165	87%	82%	91%	89%	84%	85%	88%	84%	81%	77%	83%	81%



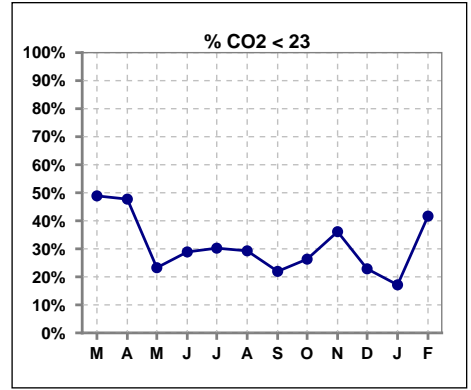
	Mar	Apr	May	Jun	Jul	Aug	Sep	Oct	Nov	Dec	Jan	Feb
# L processed/kg	45	44	43	45	43	41	41	38	36	35	35	36
# L processed/kg>=0.8	34	33	34	39	37	32	36	30	29	27	29	27
Pop. Mean	1	1	1	1	1	1	1	1	1	1	1	1
Std. Deviation	0.2	0.2	0.2	0.2	0.2	0.3	0.2	0.3	0.3	0.2	0.3	0.3
% L processed/kg>=0.8	76%	75%	79%	87%	86%	78%	88%	79%	81%	77%	83%	75%



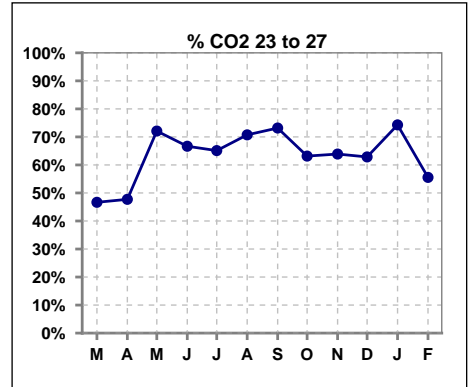
Methodology: a) All labs for 'Adequacy of Dialysis', 'Nutrition', 'Osteodystrophy', 'Anemia' and 'Diabetes' based on last value of month; b) BP's and #L processed are average of all values for month; c) Access data takes last access of month; d) Values for SGA and 'Infection Control' use most recent result.

I. ADEQUACY OF DIALYSIS - CONT.

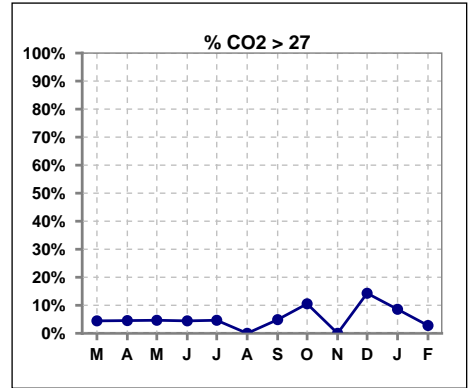
	Mar	Apr	May	Jun	Jul	Aug	Sep	Oct	Nov	Dec	Jan	Feb
# CO2	45	44	43	45	43	41	41	38	36	35	35	36
# CO2 < 23	22	21	10	13	13	12	9	10	13	8	6	15
Pop. Mean	23	23	24	24	23	23	24	24	24	24	24	23
Std. Deviation	2.18	2.58	2.55	2.93	2.64	2.19	2.23	3.07	2.36	2.96	2.58	3.20
% CO2 < 23	49%	48%	23%	29%	30%	29%	22%	26%	36%	23%	17%	42%



	Mar	Apr	May	Jun	Jul	Aug	Sep	Oct	Nov	Dec	Jan	Feb
# CO2	45	44	43	45	43	41	41	38	36	35	35	36
# CO2 23 to 27	21	21	31	30	28	29	30	24	23	22	26	20
Pop. Mean	23	23	24	24	23	23	24	24	24	24	24	23
Std. Deviation	2.18	2.58	2.55	2.93	2.64	2.19	2.23	3.07	2.36	2.96	2.58	3.20
% CO2 23 to 27	47%	48%	72%	67%	65%	71%	73%	63%	64%	63%	74%	56%



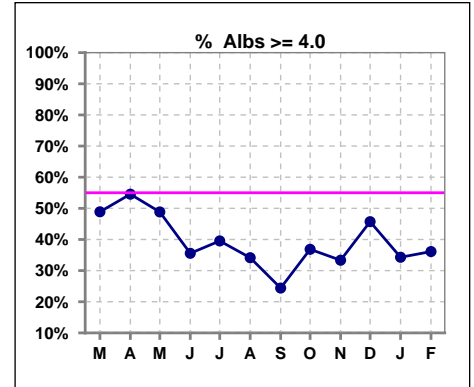
	Mar	Apr	May	Jun	Jul	Aug	Sep	Oct	Nov	Dec	Jan	Feb
# CO2	45	44	43	45	43	41	41	38	36	35	35	36
# CO2 > 27	2	2	2	2	2	0	2	4	0	5	3	1
Pop. Mean	23	23	24	24	23	23	24	24	24	24	24	23
Std. Deviation	2.18	2.58	2.55	2.93	2.64	2.19	2.23	3.07	2.36	2.96	2.58	3.20
% CO2 > 27	4%	5%	5%	4%	5%	0%	5%	11%	0%	14%	9%	3%



*Albumin values use BCG method - as of July 2001

II. NUTRITION

	Mar	Apr	May	Jun	Jul	Aug	Sep	Oct	Nov	Dec	Jan	Feb
# Albumin	45	44	43	45	43	41	41	38	36	35	35	36
# Albumin >= 4.0	22	24	21	16	17	14	10	14	12	16	12	13
Pop. Mean	3.9	3.9	3.9	3.8	3.8	3.8	3.7	3.8	3.8	3.9	3.8	3.8
Std. Deviation	0.33	0.34	0.34	0.37	0.34	0.31	0.31	0.33	0.32	0.31	0.36	0.38
% Alb >= 4.0	49%	55%	49%	36%	40%	34%	24%	37%	33%	46%	34%	36%

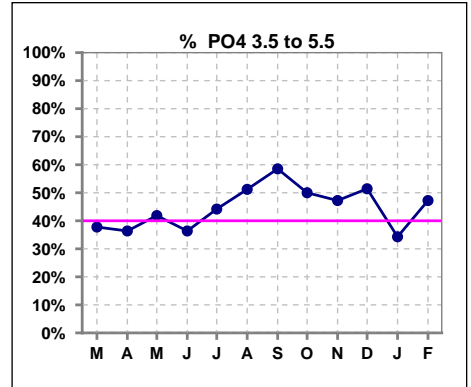


Methodology: a) All labs for 'Adequacy of Dialysis', 'Nutrition', 'Osteodystrophy', 'Anemia' and 'Diabetes' based on last value of month; b) BP's and #L processed are average of all values for month; c) Access data takes last access of month; d) Values for SGA and 'Infection Control' use most recent result.

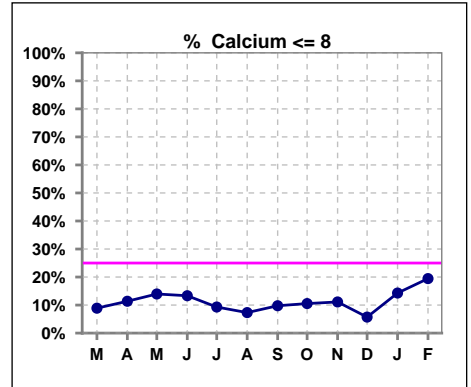
Lab methodology for PTH changed January 2012

III. OSTEODYSTROPHY

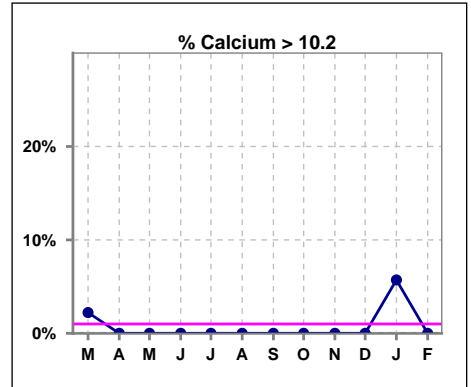
	Mar	Apr	May	Jun	Jul	Aug	Sep	Oct	Nov	Dec	Jan	Feb
# PO4	45	44	43	44	43	41	41	38	36	35	35	36
# PO4 3.5 to 5.5	17	16	18	16	19	21	24	19	17	18	12	17
Pop. Mean	6.2	6.2	5.8	6.1	5.9	5.7	5.5	5.7	5.9	5.9	6.1	5.8
Std. Deviation	1.81	1.86	1.54	1.75	1.46	1.20	1.22	1.45	1.51	1.59	1.49	1.38
% PO4 3.5 to 5.5	38%	36%	42%	36%	44%	51%	59%	50%	47%	51%	34%	47%



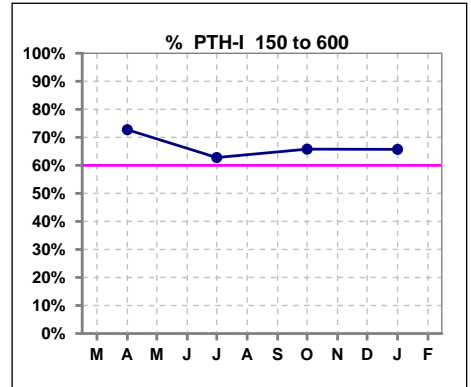
	Mar	Apr	May	Jun	Jul	Aug	Sep	Oct	Nov	Dec	Jan	Feb
# Calcium	45	44	43	45	43	41	41	38	36	35	35	36
# Calcium <= 8	4	5	6	6	4	3	4	4	4	2	5	7
Pop. Mean	9.2	9.1	8.9	8.8	8.9	8.9	8.9	8.8	8.8	8.9	9.0	8.8
Std. Deviation	0.65	0.82	0.77	0.75	0.68	0.70	0.70	0.66	0.61	0.60	0.78	0.77
% Calcium <= 8	9%	11%	14%	13%	9%	7%	10%	11%	11%	6%	14%	19%



	Mar	Apr	May	Jun	Jul	Aug	Sep	Oct	Nov	Dec	Jan	Feb
# Calcium	45	44	43	45	43	41	41	38	36	35	35	36
# Calcium > 10.2	1	0	0	0	0	0	0	0	0	0	2	0
Pop. Mean	9.2	9.1	8.9	8.8	8.9	8.9	8.9	8.8	8.8	8.9	9.0	8.8
Std. Deviation	0.65	0.82	0.77	0.75	0.68	0.70	0.70	0.66	0.61	0.60	0.78	0.77
% Calcium > 10.2	2%	0%	0%	0%	0%	0%	0%	0%	0%	0%	6%	0%



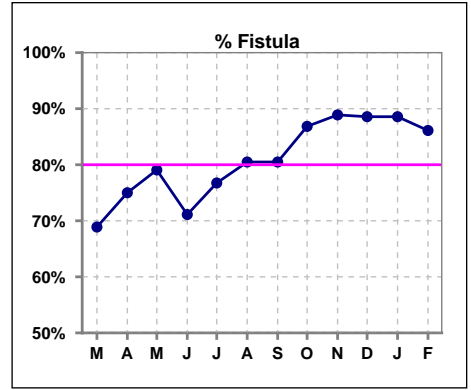
	Mar	Apr	May	Jun	Jul	Aug	Sep	Oct	Nov	Dec	Jan	Feb
# PTH-I		44			43			38			35	
# PTH-I 150 to 600		32			27			25			23	
Pop. Mean		536			579			544			552	
Std. Deviation		662			643			561			516	
% PTH-I 150 to 600		73%			63%			66%			66%	



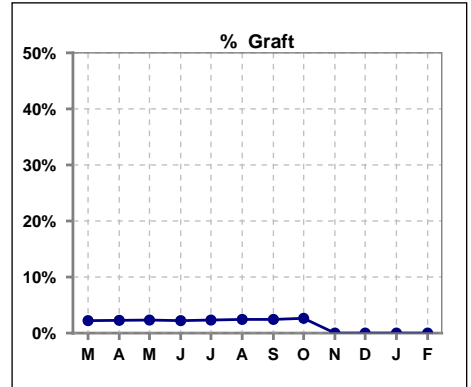
Methodology: a) All labs for 'Adequacy of Dialysis', 'Nutrition', 'Osteodystrophy', 'Anemia' and 'Diabetes' based on last value of month; b) BP's and #L processed are average of all values for month; c) Access data takes last access of month; d) Values for SGA and 'Infection Control' use most recent result.

IV. ACCESS

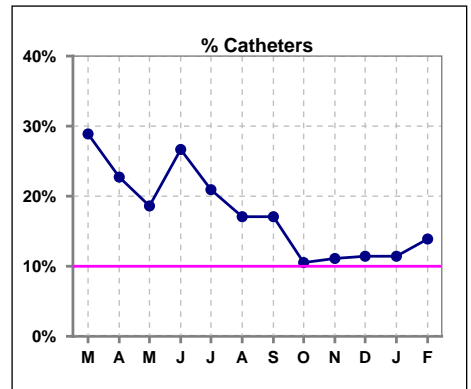
	Mar	Apr	May	Jun	Jul	Aug	Sep	Oct	Nov	Dec	Jan	Feb
# Access	45	44	43	45	43	41	41	38	36	35	35	36
# Fistula	31	33	34	32	33	33	33	33	32	31	31	31
% Fistula	69%	75%	79%	71%	77%	80%	80%	87%	89%	89%	89%	86%



	Mar	Apr	May	Jun	Jul	Aug	Sep	Oct	Nov	Dec	Jan	Feb
# Access	45	44	43	45	43	41	41	38	36	35	35	36
# Graft	1	1	1	1	1	1	1	1	0	0	0	0
% Graft	2%	2%	2%	2%	2%	2%	2%	3%	0%	0%	0%	0%



	Mar	Apr	May	Jun	Jul	Aug	Sep	Oct	Nov	Dec	Jan	Feb
# Access	45	44	43	45	43	41	41	38	36	35	35	36
# Catheters	13	10	8	12	9	7	7	4	4	4	4	5
% Catheters	29%	23%	19%	27%	21%	17%	17%	11%	11%	11%	11%	14%



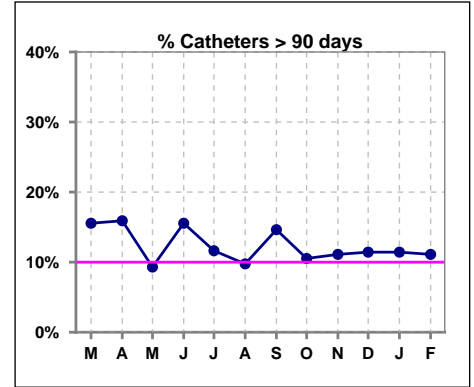
Methodology: a) All labs for 'Adequacy of Dialysis', 'Nutrition', 'Osteodystrophy', 'Anemia' and 'Diabetes' based on last value of month; b) BP's and #L processed are average of all values for month; c) Access data takes last access of month; d) Values for SGA and 'Infection Control' use most recent result.

IV. ACCESS - CONT.

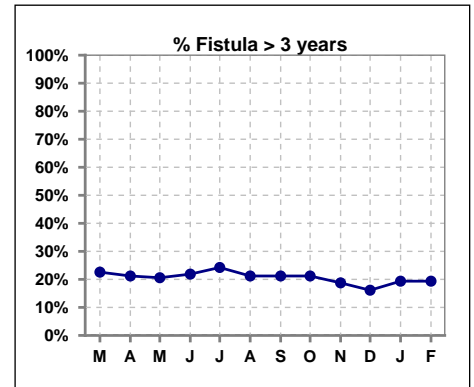
Catheters > 90 days

	Mar	Apr	May	Jun	Jul	Aug	Sep	Oct	Nov	Dec	Jan	Feb
# Access	45	44	43	45	43	41	41	38	36	35	35	36
# Catheters	7	7	4	7	5	4	6	4	4	4	4	4
% Catheters	16%	16%	9%	16%	12%	10%	15%	11%	11%	11%	11%	11%

Definition: Catheter in use on last treatment of the month



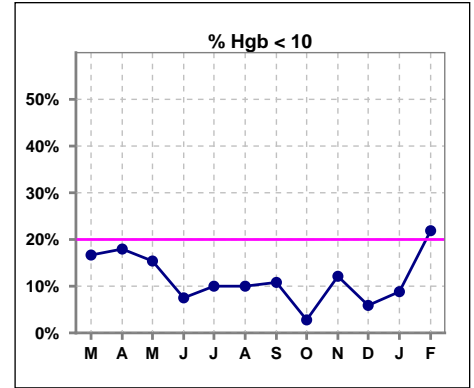
	Mar	Apr	May	Jun	Jul	Aug	Sep	Oct	Nov	Dec	Jan	Feb
# Fistula	31	33	34	32	33	33	33	33	32	31	31	31
# Fistula > 3 yrs	7	7	7	7	8	7	7	7	6	5	6	6
% Fistula > 3 yrs	23%	21%	21%	22%	24%	21%	21%	21%	19%	16%	19%	19%



V. ANEMIA

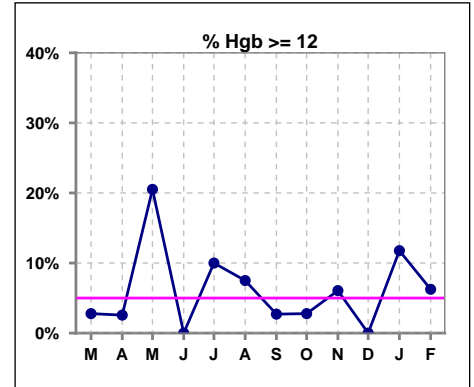
	Mar	Apr	May	Jun	Jul	Aug	Sep	Oct	Nov	Dec	Jan	Feb
# Hgb	36	39	39	40	40	40	37	36	33	34	34	32
# Hgb < 10	6	7	6	3	4	4	4	1	4	2	3	7
Pop. Mean	11.0	10.6	11.0	10.8	11.1	11.0	11.1	11.0	11.1	10.9	11.1	10.8
Std. Deviation	0.9	0.9	1.2	0.7	0.8	0.9	0.8	0.6	0.8	0.6	0.8	0.9
% Hgb < 10	17%	18%	15%	8%	10%	10%	11%	3%	12%	6%	9%	22%

Note: Excludes patients who received no ESA in month.



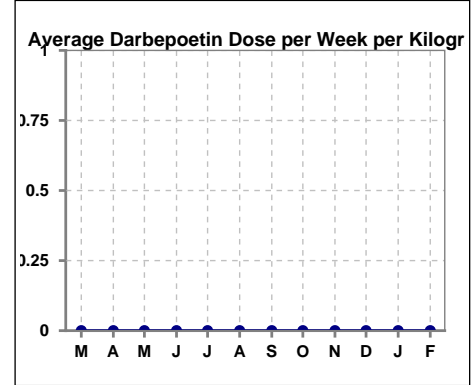
	Mar	Apr	May	Jun	Jul	Aug	Sep	Oct	Nov	Dec	Jan	Feb
# Hgb	36	39	39	40	40	40	37	36	33	34	34	32
# Hgb >= 12	1	1	8	0	4	3	1	1	2	0	4	2
Pop. Mean	11.0	10.6	11.0	10.8	11.1	11.0	11.1	11.0	11.1	10.9	11.1	10.8
Std. Deviation	0.9	0.9	1.2	0.7	0.8	0.9	0.8	0.6	0.8	0.6	0.8	0.9
% Hgb >= 12	3%	3%	21%	0%	10%	8%	3%	3%	6%	0%	12%	6%

Note: Excludes patients who received no ESA in month.



Average Darbepoetin Dose per Week per Kilogram

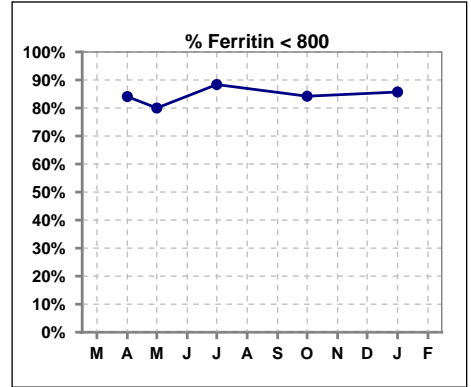
	Mar	Apr	May	Jun	Jul	Aug	Sep	Oct	Nov	Dec	Jan	Feb
# Average Darbepoetin	0	0	0	0	0	0	0	0	0	0	0	0



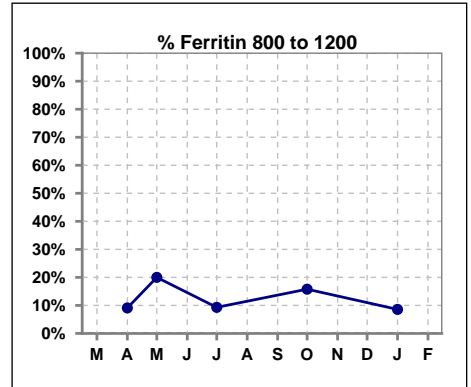
V. ANEMIA - CONT.

Iron Profile

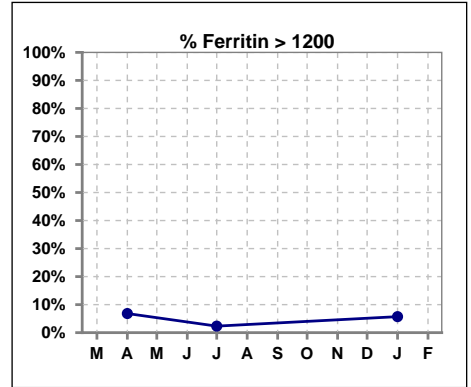
	Mar	Apr	May	Jun	Jul	Aug	Sep	Oct	Nov	Dec	Jan	Feb
# Ferritin		44	5		43			38			35	
# Ferritin < 800		37	4		38			32			30	
Pop. Mean		495	628		415			446			469	
Std. Deviation		315	315		272			244			313	
% Ferritin < 800		84%	80%		88%			84%			86%	



	Mar	Apr	May	Jun	Jul	Aug	Sep	Oct	Nov	Dec	Jan	Feb
# Ferritin		44	5		43			38			35	
# Ferritin 800 to 1200		4	1		4			6			3	
Pop. Mean		495	628		415			446			469	
Std. Deviation		315	315		272			244			313	
% Ferritin 800 to 1200		9%	20%		9%			16%			9%	



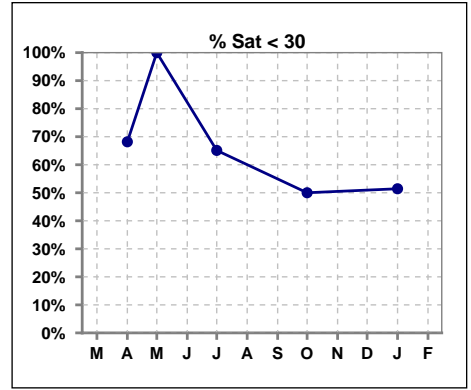
	Mar	Apr	May	Jun	Jul	Aug	Sep	Oct	Nov	Dec	Jan	Feb
# Ferritin		44	5		43			38			35	
# Ferritin > 1200		3			1						2	
Pop. Mean		495	628		415			446			469	
Std. Deviation		315	315		272			244			313	
% Ferritin > 1200		7%			2%						6%	



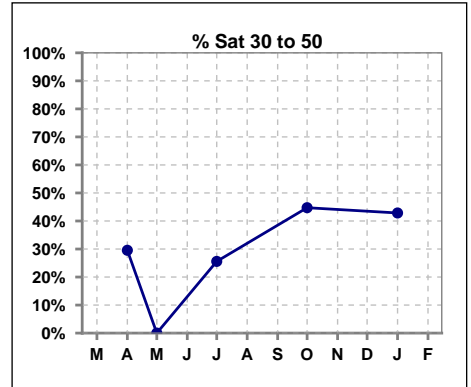
Methodology: a) All labs for 'Adequacy of Dialysis', 'Nutrition', 'Osteodystrophy', 'Anemia' and 'Diabetes' based on last value of month; b) BP's and #L processed are average of all values for month; c) Access data takes last access of month; d) Values for SGA and 'Infection Control' use most recent result.

V. ANEMIA - CONT.

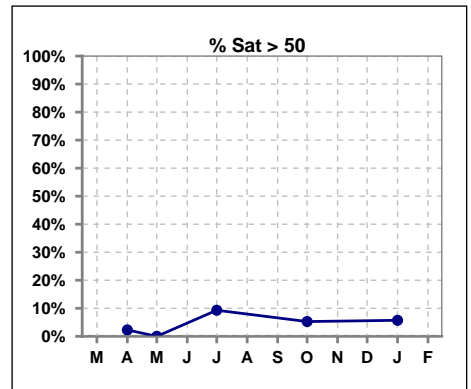
	Mar	Apr	May	Jun	Jul	Aug	Sep	Oct	Nov	Dec	Jan	Feb
# % Sat		44	4		43			38			35	
# % Sat < 30		30	4		28			19			18	
Pop. Mean		26	17		29			31			30	
Std. Deviation		11	5		15			14			15	
% % Sat < 30		68%	100%		65%			50%			51%	



	Mar	Apr	May	Jun	Jul	Aug	Sep	Oct	Nov	Dec	Jan	Feb
# % Sat		44	4		43			38			35	
# % Sat 30 to 50		13	0		11			17			15	
Pop. Mean		26	17		29			31			30	
Std. Deviation		11	5		15			14			15	
% % Sat 30 to 50		30%	0%		26%			45%			43%	

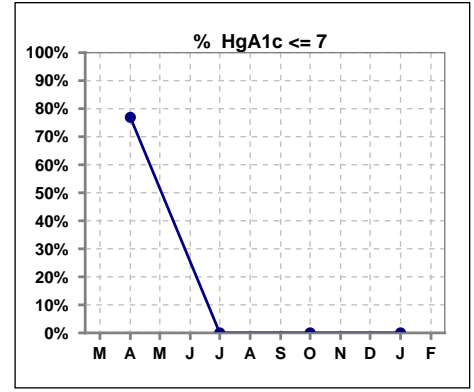


	Mar	Apr	May	Jun	Jul	Aug	Sep	Oct	Nov	Dec	Jan	Feb
# % Sat		44	4		43			38			35	
# % Sat > 50		1	0		4			2			2	
Pop. Mean		26	17		29			31			30	
Std. Deviation		11	5		15			14			15	
% % Sat > 50		2%	0%		9%			5%			6%	



VI. Diabetes

	Mar	Apr	May	Jun	Jul	Aug	Sep	Oct	Nov	Dec	Jan	Feb
# HgA1c		26			0			0			0	
# HgA1c <= 7		20			0			0			0	
Pop. Mean		6.3			0			0			0	
Std. Deviation		1.59			0			0			0	
% HgA1c <= 7		77%			0%			0%			0%	

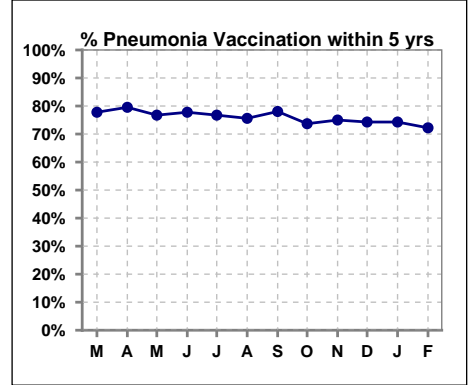


Methodology: a) All labs for 'Adequacy of Dialysis', 'Nutrition', 'Osteodystrophy', 'Anemia' and 'Diabetes' based on last value of month; b) BP's and #L processed are average of all values for month; c) Access data takes last access of month; d) Values for SGA and 'Infection Control' use most recent result.

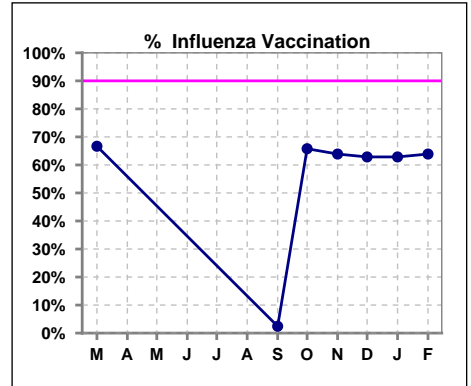
VII. Infection Control

Pneumonia vaccination within the past five years

	Mar	Apr	May	Jun	Jul	Aug	Sep	Oct	Nov	Dec	Jan	Feb
# Patient	45	44	43	45	43	41	41	38	36	35	35	36
# Pneumonia	35	35	33	35	33	31	32	28	27	26	26	26
% Pneumonia	78%	80%	77%	78%	77%	76%	78%	74%	75%	74%	74%	72%



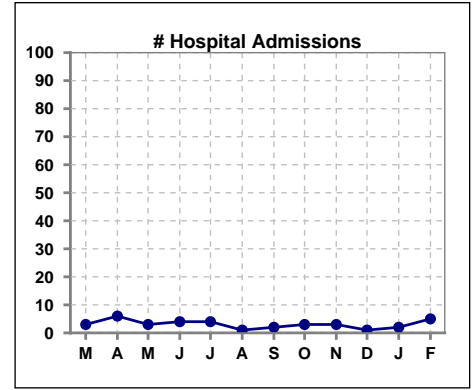
	Mar	Apr	May	Jun	Jul	Aug	Sep	Oct	Nov	Dec	Jan	Feb
# Patient	45						41	38	36	35	35	36
# Influenza	30						1	25	23	22	22	23
% Influenza	67%						2%	66%	64%	63%	63%	64%



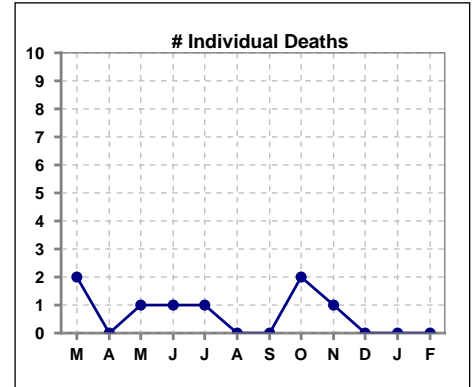
Methodology: a) All labs for 'Adequacy of Dialysis', 'Nutrition', 'Osteodystrophy', 'Anemia' and 'Diabetes' based on last value of month; b) BP's and #L processed are average of all values for month; c) Access data takes last access of month; d) Values for SGA and 'Infection Control' use most recent result.

VIII. Outcome measures

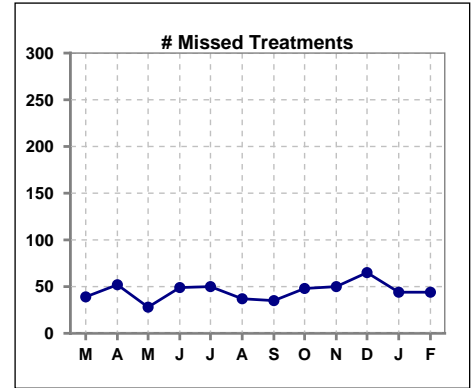
	Mar	Apr	May	Jun	Jul	Aug	Sep	Oct	Nov	Dec	Jan	Feb
# Patient	45	44	43	45	43	41	41	38	36	35	35	36
# Hospital Admissions	3	6	3	4	4	1	2	3	3	1	2	5



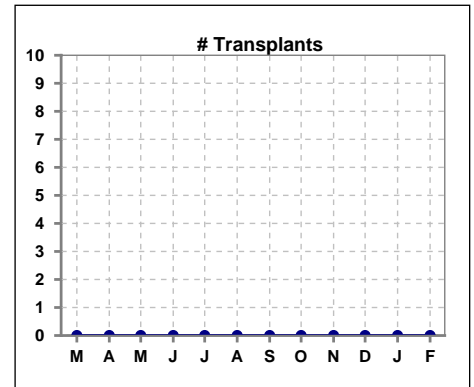
	Mar	Apr	May	Jun	Jul	Aug	Sep	Oct	Nov	Dec	Jan	Feb
# Patient	45	44	43	45	43	41	41	38	36	35	35	36
# Individual Deaths	2	0	1	1	1	0	0	2	1	0	0	0



	Mar	Apr	May	Jun	Jul	Aug	Sep	Oct	Nov	Dec	Jan	Feb
# Patient	45	44	43	45	43	41	41	38	36	35	35	36
# Missed Treatments	39	52	28	49	50	37	35	48	50	65	44	44



	Mar	Apr	May	Jun	Jul	Aug	Sep	Oct	Nov	Dec	Jan	Feb
# Patient	45	44	43	45	43	41	41	38	36	35	35	36
# Transplants	0	0	0	0	0	0	0	0	0	0	0	0



Methodology: a) All labs for 'Adequacy of Dialysis', 'Nutrition', 'Osteodystrophy', 'Anemia' and 'Diabetes' based on last value of month; b) BP's and #L processed are average of all values for month; c) Access data takes last access of month; d) Values for SGA and 'Infection Control' use most recent result.