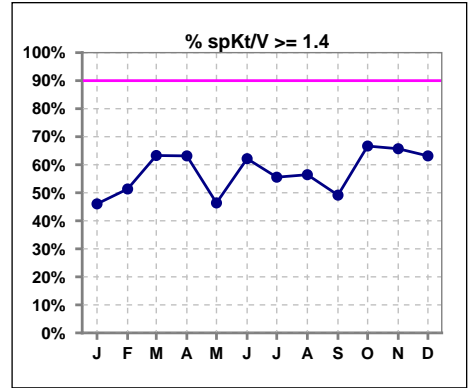
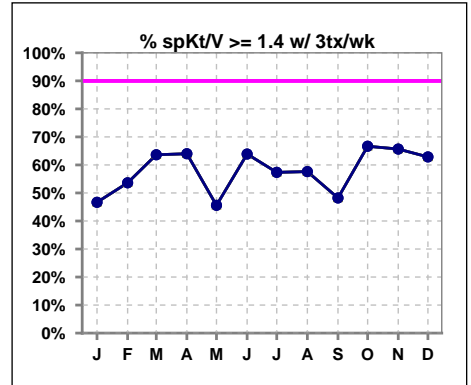


I. ADEQUACY OF DIALYSIS

	Jan	Feb	Mar	Apr	May	Jun	Jul	Aug	Sep	Oct	Nov	Dec
# spKt/V	63	74	79	76	69	74	72	62	59	63	70	76
# spKt/V >= 1.4	29	38	50	48	32	46	40	35	29	42	46	48
Pop. Mean	1.31	1.41	1.50	1.47	1.42	1.46	1.46	1.44	1.41	1.54	1.56	1.59
Std. Deviation	0.37	0.38	0.40	0.35	0.30	0.29	0.33	0.35	0.38	0.34	0.34	0.39
% spKt/V >= 1.4	46%	51%	63%	63%	46%	62%	56%	56%	49%	67%	66%	63%
% spKt/V >= 1.2	63%	70%	78%	78%	84%	86%	79%	76%	75%	89%	87%	89%

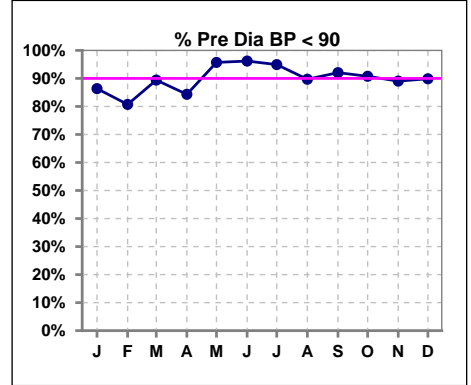


	Jan	Feb	Mar	Apr	May	Jun	Jul	Aug	Sep	Oct	Nov	Dec
# spKt/V w/ 3tx/wk	60	69	77	75	68	72	68	59	56	60	67	70
# spKt/V >= 1.4 w/3tx/wk	28	37	49	48	31	46	39	34	27	40	44	44
Pop. Mean	1.31	1.43	1.51	1.48	1.41	1.46	1.47	1.45	1.40	1.54	1.57	1.59
Std. Deviation	0.38	0.35	0.39	0.33	0.30	0.29	0.32	0.35	0.39	0.33	0.35	0.37
% spKt/V >= 1.4 w/3tx/wk	54%	64%	64%	64%	46%	64%	57%	58%	48%	67%	66%	63%

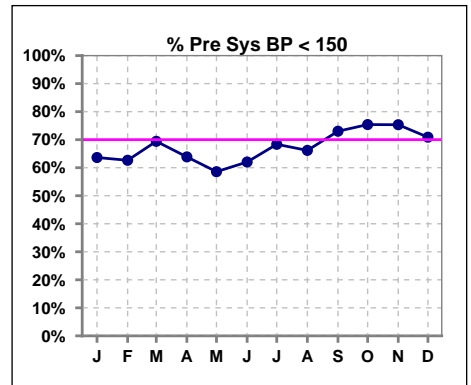


Blood Pressure Control (Pre)

	Jan	Feb	Mar	Apr	May	Jun	Jul	Aug	Sep	Oct	Nov	Dec
# Pre Dia BP	66	83	85	83	70	79	79	68	63	65	73	79
# Pre Dia BP < 90	57	67	76	70	67	76	75	61	58	59	65	71
Pop. Mean	76	77	75	77	73	73	72	74	74	76	76	74
Std. Deviation	13.5	14.1	12.8	15.2	11.5	11.4	12.0	12.9	11.5	11.0	12.0	13.3
% Pre Dia BP < 90	86%	81%	89%	84%	96%	96%	95%	90%	92%	91%	89%	90%



	Jan	Feb	Mar	Apr	May	Jun	Jul	Aug	Sep	Oct	Nov	Dec
# Pre Sys BP	66	83	85	83	70	79	79	68	63	65	73	79
# Pre Sys BP < 150	42	52	59	53	41	49	54	45	46	49	55	56
Pop. Mean	142	143	141	143	142	143	140	141	140	141	138	140
Std. Deviation	21.8	21.2	19.1	20.0	20.3	22.2	19.3	15.8	20.3	17.1	19.0	19.8
% Pre Sys BP < 150	64%	63%	69%	64%	59%	62%	68%	66%	73%	75%	75%	71%

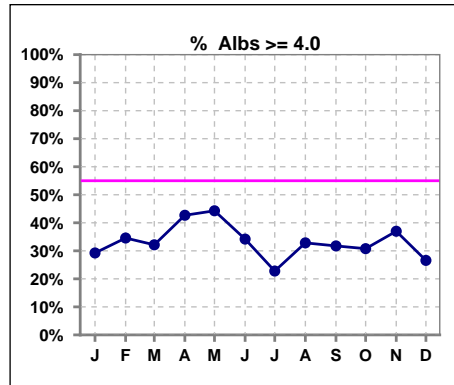


Methodology: a) All labs for 'Adequacy of Dialysis', 'Nutrition', 'Osteodystrophy', 'Anemia' and 'Diabetes' based on last value of month; b) BP's and #L processed are average of all values for month; c) Access data takes last access of month; d) Values for SGA and 'Infection Control' use most recent result.

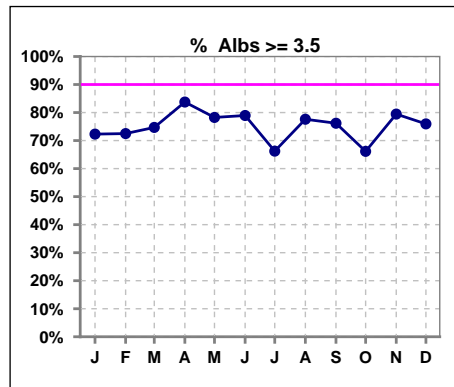
*Albumin values use BCG method - as of July 2001

II. NUTRITION

	Jan	Feb	Mar	Apr	May	Jun	Jul	Aug	Sep	Oct	Nov	Dec
# Albumin	65	81	84	82	70	79	79	67	63	65	73	79
# Albumin >= 4.0	19	28	27	35	31	27	18	22	20	20	27	21
Pop. Mean	3.6	3.7	3.7	3.8	3.8	3.7	3.6	3.7	3.7	3.6	3.7	3.7
Std. Deviation	0.52	0.46	0.48	0.38	0.49	0.45	0.43	0.43	0.46	0.55	0.48	0.40
% Alb >= 4.0	29%	35%	32%	43%	44%	34%	23%	33%	32%	31%	37%	27%



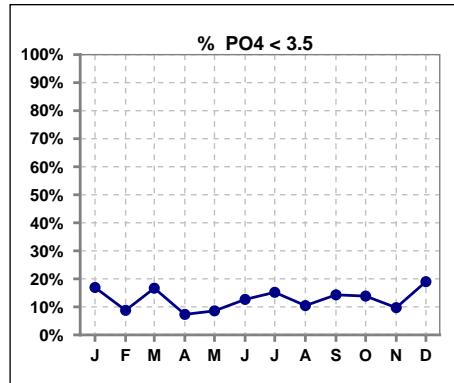
	Jan	Feb	Mar	Apr	May	Jun	Jul	Aug	Sep	Oct	Nov	Dec
# Albumin	65	80	83	80	69	76	77	67	63	65	73	79
# Albumin >= 3.5	47	58	62	67	54	60	51	52	48	43	58	60
Pop. Mean	3.6	3.7	3.7	3.8	3.8	3.7	3.6	3.7	3.7	3.6	3.7	3.7
Std. Deviation	0.52	0.46	0.48	0.38	0.49	0.45	0.44	0.43	0.46	0.55	0.48	0.40
% Alb >= 3.5	72%	73%	75%	84%	78%	79%	66%	78%	76%	66%	79%	76%



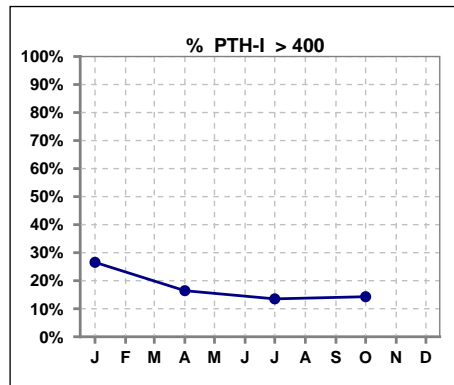
Lab methodology for PTH changed January 2012

III. OSTEODYSTROPHY

	Jan	Feb	Mar	Apr	May	Jun	Jul	Aug	Sep	Oct	Nov	Dec
# PO4	65	80	84	82	70	79	79	67	63	65	72	79
# PO4 < 3.5	11	7	14	6	6	10	12	7	9	9	7	15
Pop. Mean	5.3	5.1	5.1	5.5	5.3	5.3	4.9	5.2	5.1	5.2	5.3	5.1
Std. Deviation	1.78	1.45	1.73	1.66	1.62	1.77	1.30	1.36	1.85	1.83	1.91	1.79
% PO4 < 3.5	17%	9%	17%	7%	9%	13%	15%	10%	14%	14%	10%	19%



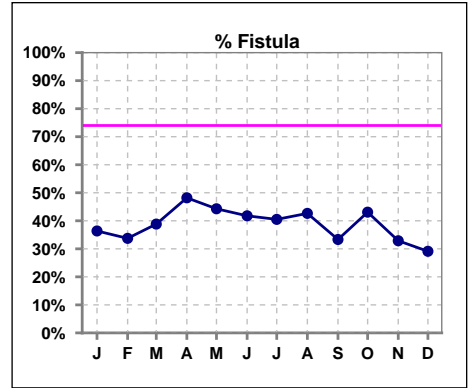
	Jan	Feb	Mar	Apr	May	Jun	Jul	Aug	Sep	Oct	Nov	Dec
# PTH-I	64			73			74			63		
# PTH-I > 400	17			12			10			9		
Pop. Mean	294			281			239			236		
Std. Deviation	232			265			243			184		
% PTH-I > 400	27%			16%			14%			14%		



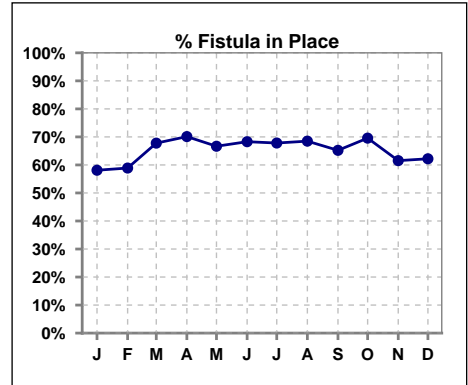
Methodology: a) All labs for 'Adequacy of Dialysis', 'Nutrition', 'Osteodystrophy', 'Anemia' and 'Diabetes' based on last value of month; b) BP's and #L processed are average of all values for month; c) Access data takes last access of month; d) Values for SGA and 'Infection Control' use most recent result.

IV. ACCESS

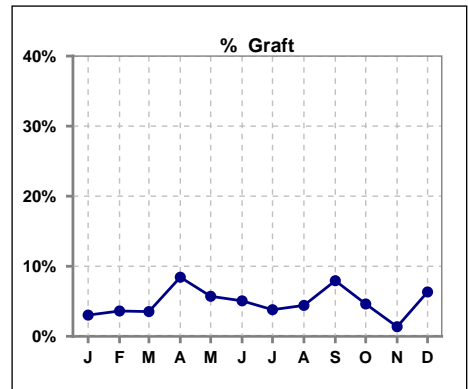
	Jan	Feb	Mar	Apr	May	Jun	Jul	Aug	Sep	Oct	Nov	Dec
# Access	66	83	85	83	70	79	79	68	63	65	73	79
# Fistula	24	28	33	40	31	33	32	29	21	28	24	23
% Fistula	36%	34%	39%	48%	44%	42%	41%	43%	33%	43%	33%	29%



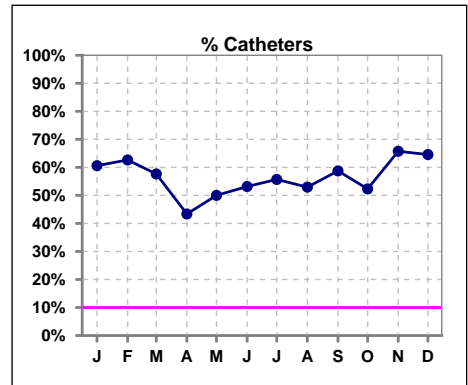
	Jan	Feb	Mar	Apr	May	Jun	Jul	Aug	Sep	Oct	Nov	Dec
# Patient	74	90	90	87	78	82	87	73	69	69	78	82
# Fistula in Place	43	53	61	61	52	56	59	50	45	48	48	51
% Fistula in Place	58%	59%	68%	70%	67%	68%	68%	68%	65%	70%	62%	62%



	Jan	Feb	Mar	Apr	May	Jun	Jul	Aug	Sep	Oct	Nov	Dec
# Access	66	83	85	83	70	79	79	68	63	65	73	79
# Graft	2	3	3	7	4	4	3	3	5	3	1	5
% Graft	3%	4%	4%	8%	6%	5%	4%	4%	8%	5%	1%	6%



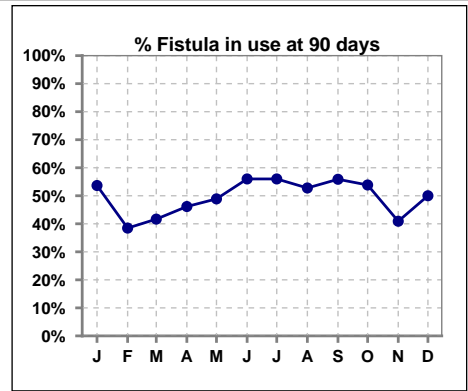
	Jan	Feb	Mar	Apr	May	Jun	Jul	Aug	Sep	Oct	Nov	Dec
# Access	66	83	85	83	70	79	79	68	63	65	73	79
# Catheters	40	52	49	36	35	42	44	36	37	34	48	51
% Catheters	61%	63%	58%	43%	50%	53%	56%	53%	59%	52%	66%	65%



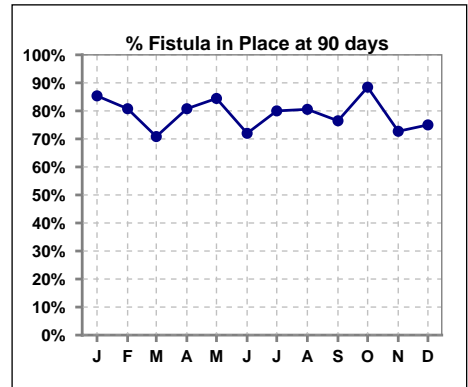
Methodology: a) All labs for 'Adequacy of Dialysis', 'Nutrition', 'Osteodystrophy', 'Anemia' and 'Diabetes' based on last value of month; b) BP's and #L processed are average of all values for month; c) Access data takes last access of month; d) Values for SGA and 'Infection Control' use most recent result.

IV. ACCESS - CONT. Access at 90 days for those patients that reached 90 days within the month.

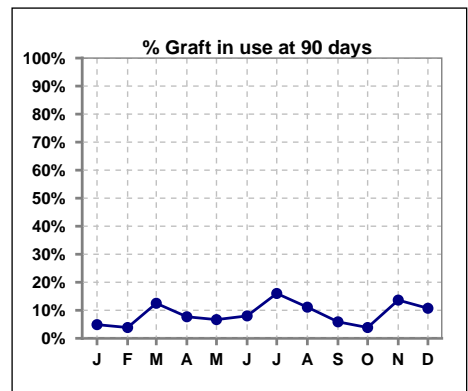
	Jan	Feb	Mar	Apr	May	Jun	Jul	Aug	Sep	Oct	Nov	Dec
# Patient	41	26	24	26	45	25	25	36	34	26	22	28
# Fistula in use	22	10	10	12	22	14	14	19	19	14	9	14
% Fistula in use	54%	38%	42%	46%	49%	56%	56%	53%	56%	54%	41%	50%



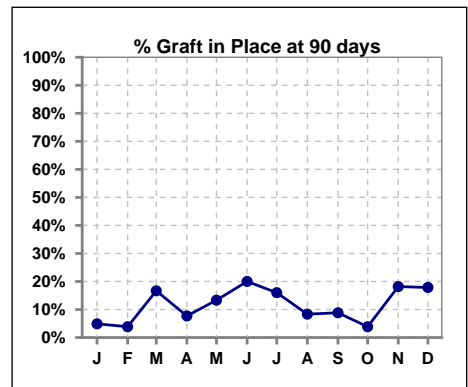
	Jan	Feb	Mar	Apr	May	Jun	Jul	Aug	Sep	Oct	Nov	Dec
# Patient	41	26	24	26	45	25	25	36	34	26	22	28
# Fistula in Place	35	21	17	21	38	18	20	29	26	23	16	21
% Fistula in Place	85%	81%	71%	81%	84%	72%	80%	81%	76%	88%	73%	75%



	Jan	Feb	Mar	Apr	May	Jun	Jul	Aug	Sep	Oct	Nov	Dec
# Patient	41	26	24	26	45	25	25	36	34	26	22	28
# Graft in use	2	1	3	2	3	2	4	4	2	1	3	3
% Graft in use	5%	4%	13%	8%	7%	8%	16%	11%	6%	4%	14%	11%



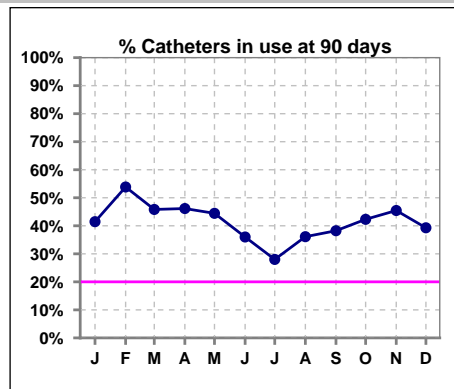
	Jan	Feb	Mar	Apr	May	Jun	Jul	Aug	Sep	Oct	Nov	Dec
# Patient	41	26	24	26	45	25	25	36	34	26	22	28
# Graft in Place	2	1	4	2	6	5	4	3	3	1	4	5
% Graft in Place	5%	4%	17%	8%	13%	20%	16%	8%	9%	4%	18%	18%



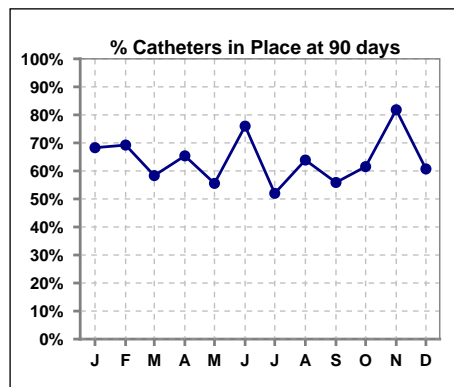
Methodology: a) All labs for 'Adequacy of Dialysis', 'Nutrition', 'Osteodystrophy', 'Anemia' and 'Diabetes' based on last value of month; b) BP's and #L processed are average of all values for month; c) Access data takes last access of month; d) Values for SGA and 'Infection Control' use most recent result.

IV. ACCESS - CONT. Access at 90 days for those patients that reached 90 days within the month.

	Jan	Feb	Mar	Apr	May	Jun	Jul	Aug	Sep	Oct	Nov	Dec
# Patient	41	26	24	26	45	25	25	36	34	26	22	28
# Catheters in use	17	14	11	12	20	9	7	13	13	11	10	11
% Catheters in use	41%	54%	46%	46%	44%	36%	28%	36%	38%	42%	45%	39%



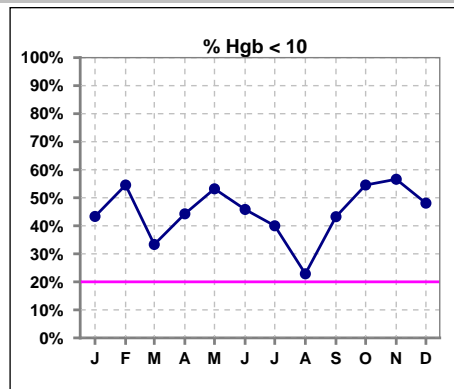
	Jan	Feb	Mar	Apr	May	Jun	Jul	Aug	Sep	Oct	Nov	Dec
# Patient	41	26	24	26	45	25	25	36	34	26	22	28
# Catheters in Place	28	18	14	17	25	19	13	23	19	16	18	17
% Catheters in Place	68%	69%	58%	65%	56%	76%	52%	64%	56%	62%	82%	61%



V. ANEMIA

	Jan	Feb	Mar	Apr	May	Jun	Jul	Aug	Sep	Oct	Nov	Dec
# Hgb	30	44	54	61	47	48	50	35	37	44	53	52
# Hgb < 10	13	24	18	27	25	22	20	8	16	24	30	25
Pop. Mean	10.1	9.9	10.3	10.3	10.0	10.3	10.2	10.9	10.0	9.8	9.9	10.1
Std. Deviation	1.5	1.1	1.5	1.5	1.2	1.4	1.2	1.2	1.6	1.5	1.6	1.1
% Hgb < 10	43%	55%	33%	44%	53%	46%	40%	23%	43%	55%	57%	48%

Note: Excludes patients who received no ESA in month.



	Jan	Feb	Mar	Apr	May	Jun	Jul	Aug	Sep	Oct	Nov	Dec
# Hgb	30	44	54	61	47	48	50	35	37	44	53	52
# Hgb > 12	2	2	6	5	2	6	3	5	3	3	4	1
Pop. Mean	10.1	9.9	10.3	10.3	10.0	10.3	10.2	10.9	10.0	9.8	9.9	10.1
Std. Deviation	1.5	1.1	1.5	1.5	1.2	1.4	1.2	1.2	1.6	1.5	1.6	1.1
% Hgb > 12	7%	5%	11%	8%	4%	13%	6%	14%	8%	7%	8%	2%

Note: Excludes patients who received no ESA in month.

