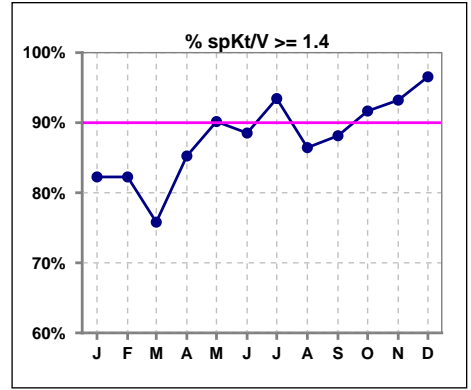
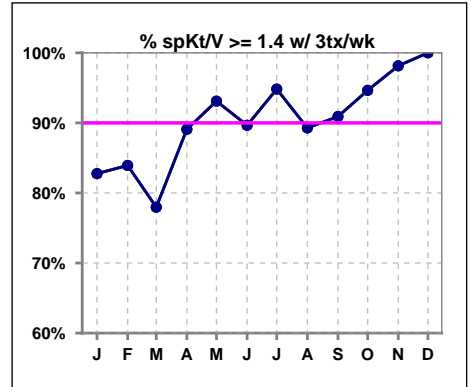


I. ADEQUACY OF DIALYSIS

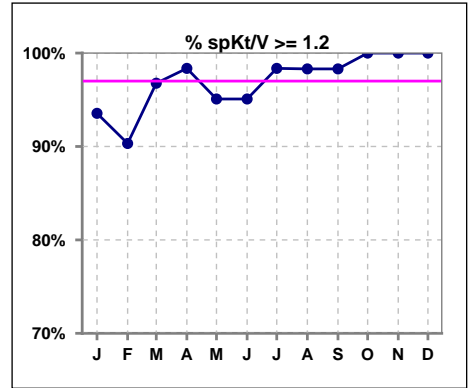
	Jan	Feb	Mar	Apr	May	Jun	Jul	Aug	Sep	Oct	Nov	Dec
# spKt/V	62	62	62	61	61	61	61	59	59	60	59	58
# spKt/V >= 1.4	51	51	47	52	55	54	57	51	52	55	55	56
Pop. Mean	1.64	1.64	1.63	1.66	1.74	1.69	1.78	1.73	1.76	1.76	1.75	1.76
Std. Deviation	0.33	0.33	0.30	0.28	0.32	0.31	0.33	0.28	0.29	0.30	0.28	0.22
% spKt/V >= 1.4	82%	82%	76%	85%	90%	89%	93%	86%	88%	92%	93%	97%



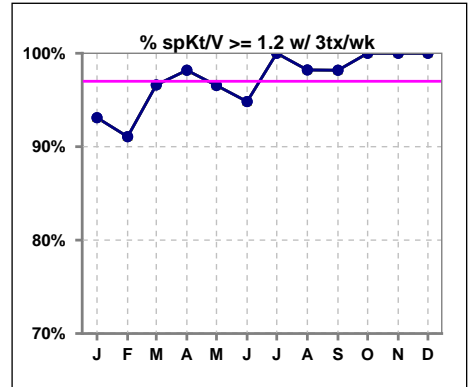
	Jan	Feb	Mar	Apr	May	Jun	Jul	Aug	Sep	Oct	Nov	Dec
# spKt/V w/ 3tx/wk	58	56	59	55	58	58	58	56	55	56	54	54
# spKt/V >= 1.4 w/3tx/wk	48	47	46	49	54	52	55	50	50	53	53	54
Pop. Mean	1.64	1.64	1.64	1.68	1.76	1.70	1.80	1.75	1.79	1.78	1.78	1.78
Std. Deviation	0.33	0.33	0.30	0.27	0.32	0.31	0.32	0.28	0.29	0.29	0.27	0.21
% >= 1.4 w/3tx/wk	83%	84%	78%	89%	93%	90%	95%	89%	91%	95%	98%	100%



	Jan	Feb	Mar	Apr	May	Jun	Jul	Aug	Sep	Oct	Nov	Dec
# spKt/V	62	62	62	61	61	61	61	59	59	60	59	58
# spKt/V >= 1.2	58	56	60	60	58	58	60	58	58	60	59	58
Pop. Mean	1.64	1.64	1.63	1.66	1.74	1.69	1.78	1.73	1.76	1.76	1.75	1.76
Std. Deviation	0.33	0.33	0.30	0.28	0.32	0.31	0.33	0.28	0.29	0.30	0.28	0.22
% spKt/V >= 1.2	94%	90%	97%	98%	95%	95%	98%	98%	98%	100%	100%	100%



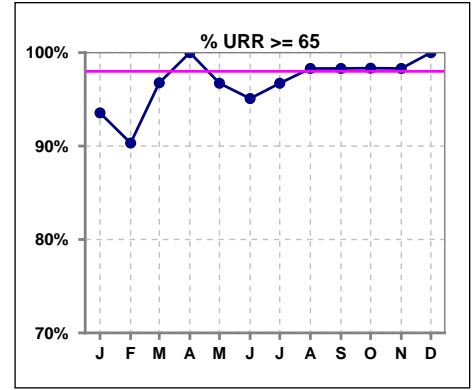
	Jan	Feb	Mar	Apr	May	Jun	Jul	Aug	Sep	Oct	Nov	Dec
# spKt/V w/ 3tx/wk	58	56	59	55	58	58	58	56	55	56	54	54
# spKt/V >= 1.2 w/3tx/wk	54	51	57	54	56	55	58	55	54	56	54	54
Pop. Mean	1.64	1.64	1.64	1.68	1.76	1.70	1.80	1.75	1.79	1.78	1.78	1.78
Std. Deviation	0.33	0.33	0.30	0.27	0.32	0.31	0.32	0.28	0.29	0.29	0.27	0.21
% >= 1.2 w/3tx/wk	93%	91%	97%	98%	97%	95%	100%	98%	98%	100%	100%	100%



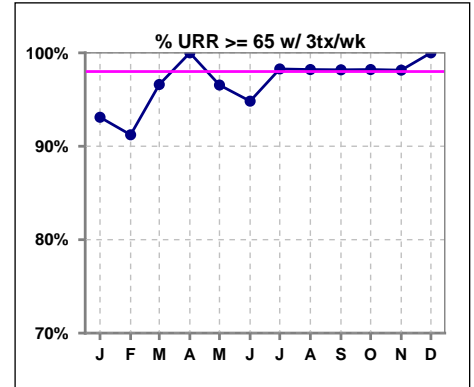
Methodology: a) All labs for 'Adequacy of Dialysis', 'Nutrition', 'Osteodystrophy', 'Anemia' and 'Diabetes' based on last value of month; b) BP's and #L processed are average of all values for month; c) Access data takes last access of month; d) Values for SGA and 'Infection Control' use most recent result.

I. ADEQUACY OF DIALYSIS - CONT.

	Jan	Feb	Mar	Apr	May	Jun	Jul	Aug	Sep	Oct	Nov	Dec
# URR	62	62	62	61	61	61	61	59	59	60	59	58
# URR >= 65	58	56	60	61	59	58	59	58	58	59	58	58
Pop. Mean	75	75	75	76	77	76	78	77	77	77	77	78
Std. Deviation	7.90	7.18	5.96	5.20	6.25	6.67	5.03	5.76	5.13	5.25	4.88	4.20
% URR >= 65	94%	90%	97%	100%	97%	95%	97%	98%	98%	98%	98%	100%



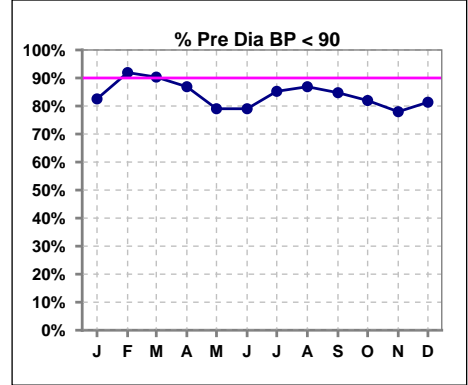
	Jan	Feb	Mar	Apr	May	Jun	Jul	Aug	Sep	Oct	Nov	Dec
# URR w/ 3tx/wk	58	57	59	57	58	58	58	56	55	56	54	54
# URR>=65 w/ 3tx/wk	54	52	57	57	56	55	57	55	54	55	53	54
Pop. Mean	75	75	75	76	77	76	78	77	78	77	78	78
Std. Deviation	8.04	7.04	5.93	4.96	6.18	6.72	4.60	5.61	5.00	5.00	4.70	3.79
% URR>=65 w/ 3tx/wk	93%	91%	97%	100%	97%	95%	98%	98%	98%	98%	98%	100%



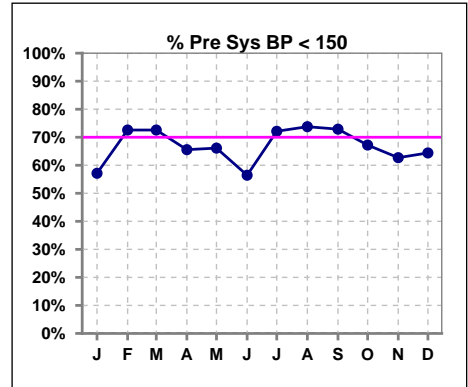
I. ADEQUACY OF DIALYSIS - CONT.

Blood Pressure Control (Pre)

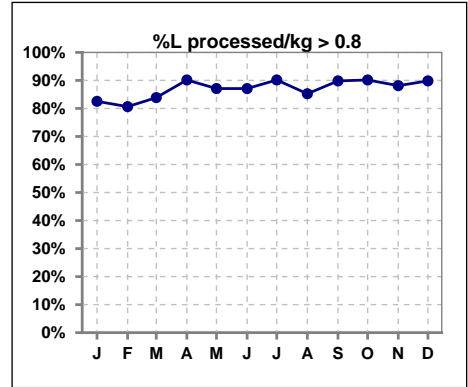
	Jan	Feb	Mar	Apr	May	Jun	Jul	Aug	Sep	Oct	Nov	Dec
# Pre Dia BP	63	62	62	61	62	62	61	61	59	61	59	59
# Pre Dia BP < 90	52	57	56	53	49	49	52	53	50	50	46	48
Pop. Mean	75	72	72	72	78	78	78	77	76	78	79	78
Std. Deviation	17.2	13.1	14.5	14.9	12.2	12.4	11.5	11.7	12.0	11.8	11.4	13.0
% Pre Dia BP < 90	83%	92%	90%	87%	79%	79%	85%	87%	85%	82%	78%	81%



	Jan	Feb	Mar	Apr	May	Jun	Jul	Aug	Sep	Oct	Nov	Dec
# Pre Sys BP	63	62	62	61	62	62	61	61	59	61	59	59
# Pre Sys BP < 150	36	45	45	40	41	35	44	45	43	41	37	38
Pop. Mean	143	139	138	140	144	144	141	140	139	143	144	143
Std. Deviation	20.3	20.5	21.6	22.3	20.5	20.0	18.7	18.5	20.1	18.6	17.3	18.9
%Pre Sys BP <150	57%	73%	73%	66%	66%	56%	72%	74%	73%	67%	63%	64%



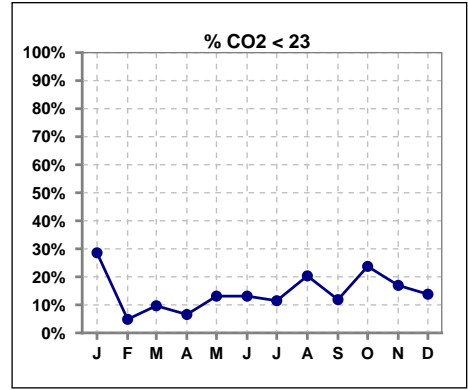
	Jan	Feb	Mar	Apr	May	Jun	Jul	Aug	Sep	Oct	Nov	Dec
# L processed/kg	63	62	62	61	62	62	61	61	59	61	59	59
# L processed/kg>0.8	52	50	52	55	54	54	55	52	53	55	52	53
Pop. Mean	1	1	1	1	1	1	1	1	1	1	1	1
Std. Deviation	0.3	0.3	0.3	0.3	0.3	0.3	0.3	0.3	0.3	0.3	0.3	0.3
% L processed/kg>0.8	83%	81%	84%	90%	87%	87%	90%	85%	90%	90%	88%	90%



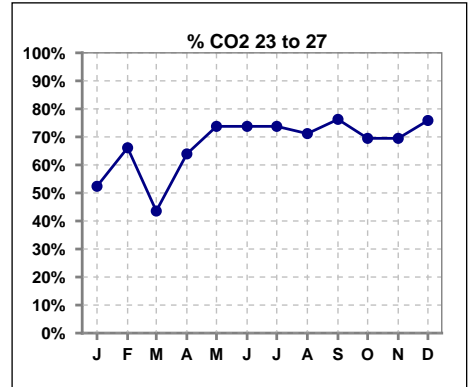
Methodology: a) All labs for 'Adequacy of Dialysis', 'Nutrition', 'Osteodystrophy', 'Anemia' and 'Diabetes' based on last value of month; b) BP's and #L processed are average of all values for month; c) Access data takes last access of month; d) Values for SGA and 'Infection Control' use most recent result.

I. ADEQUACY OF DIALYSIS - CONT.

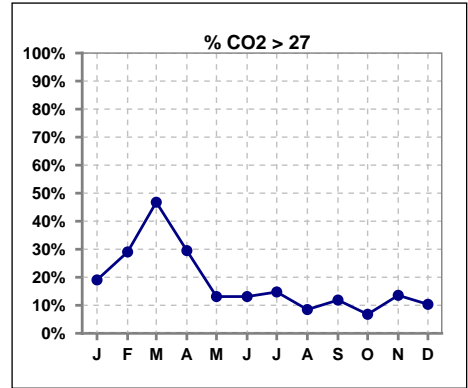
	Jan	Feb	Mar	Apr	May	Jun	Jul	Aug	Sep	Oct	Nov	Dec
# CO2	63	62	62	61	61	61	61	59	59	59	59	58
# CO2 < 23	18	3	6	4	8	8	7	12	7	14	10	8
Pop. Mean	25	26	27	26	25	25	25	24	25	24	25	25
Std. Deviation	3.30	2.38	3.14	2.23	2.28	2.77	2.18	2.81	2.43	2.45	2.41	2.36
% CO2 < 23	29%	5%	10%	7%	13%	13%	11%	20%	12%	24%	17%	14%



	Jan	Feb	Mar	Apr	May	Jun	Jul	Aug	Sep	Oct	Nov	Dec
# CO2	63	62	62	61	61	61	61	59	59	59	59	58
# CO2 23 to 27	33	41	27	39	45	45	45	42	45	41	41	44
Pop. Mean	25	26	27	26	25	25	25	24	25	24	25	25
Std. Deviation	3.30	2.38	3.14	2.23	2.28	2.77	2.18	2.81	2.43	2.45	2.41	2.36
% CO2 23 to 27	52%	66%	44%	64%	74%	74%	74%	71%	76%	69%	69%	76%



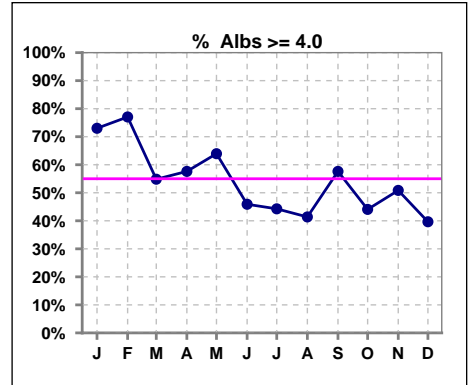
	Jan	Feb	Mar	Apr	May	Jun	Jul	Aug	Sep	Oct	Nov	Dec
# CO2	63	62	62	61	61	61	61	59	59	59	59	58
# CO2 > 27	12	18	29	18	8	8	9	5	7	4	8	6
Pop. Mean	25	26	27	26	25	25	25	24	25	24	25	25
Std. Deviation	3.30	2.38	3.14	2.23	2.28	2.77	2.18	2.81	2.43	2.45	2.41	2.36
% CO2 > 27	19%	29%	47%	30%	13%	13%	15%	8%	12%	7%	14%	10%



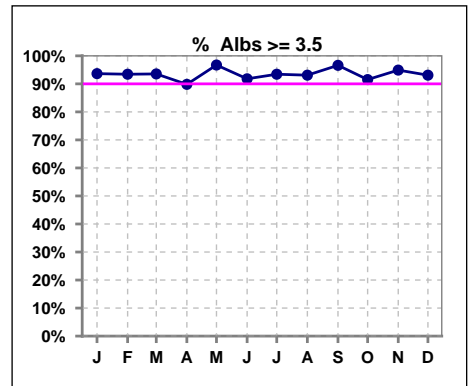
*Albumin values use BCG method - as of July 2001

II. NUTRITION

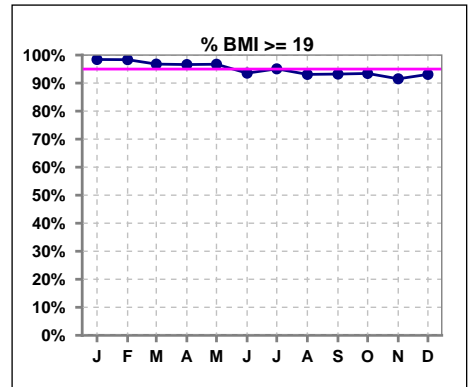
	Jan	Feb	Mar	Apr	May	Jun	Jul	Aug	Sep	Oct	Nov	Dec
# Albumin	63	61	62	59	61	61	61	58	59	59	59	58
# Albumin >= 4.0	46	47	34	34	39	28	27	24	34	26	30	23
Pop. Mean	4.1	4.1	4.0	4.0	4.0	3.9	3.9	3.9	4.0	3.9	4.0	3.9
Std. Deviation	0.35	0.38	0.33	0.40	0.31	0.30	0.33	0.26	0.30	0.31	0.36	0.32
% Alb >= 4.0	73%	77%	55%	58%	64%	46%	44%	41%	58%	44%	51%	40%



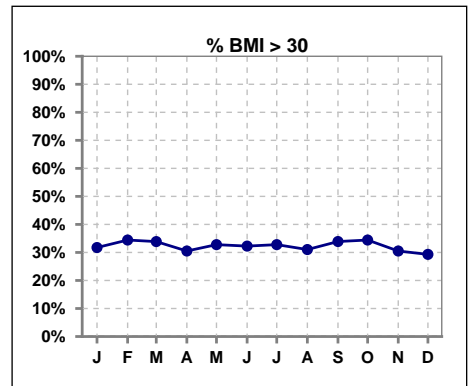
	Jan	Feb	Mar	Apr	May	Jun	Jul	Aug	Sep	Oct	Nov	Dec
# Albumin	63	61	62	59	61	61	61	58	59	59	59	58
# Albumin >= 3.5	59	57	58	53	59	56	57	54	57	54	56	54
Pop. Mean	4.1	4.1	4.0	4.0	4.0	3.9	3.9	3.9	4.0	3.9	4.0	3.9
Std. Deviation	0.35	0.38	0.33	0.40	0.31	0.30	0.33	0.26	0.30	0.31	0.36	0.32
% Alb >= 3.5	94%	93%	94%	90%	97%	92%	93%	93%	97%	92%	95%	93%



	Jan	Feb	Mar	Apr	May	Jun	Jul	Aug	Sep	Oct	Nov	Dec
# BMI	63	61	62	59	61	62	61	58	59	61	59	58
# BMI >= 19	62	60	60	57	59	58	58	54	55	57	54	54
Pop. Mean	28	28	28	27	28	27	28	27	27	28	27	27
Std. Deviation	7.3	7.4	7.3	5.9	7.2	7.1	7.0	7.0	5.8	7.3	5.9	5.9
% BMI >= 19	98%	98%	97%	97%	97%	94%	95%	93%	93%	93%	92%	93%



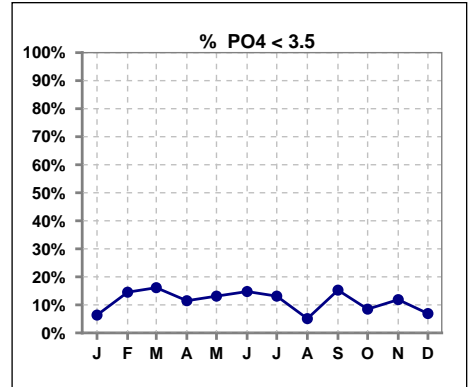
	Jan	Feb	Mar	Apr	May	Jun	Jul	Aug	Sep	Oct	Nov	Dec
# BMI	63	61	62	59	61	62	61	58	59	61	59	58
# BMI > 30	20	21	21	18	20	20	20	18	20	21	18	17
Pop. Mean	28	28	28	27	28	27	28	27	27	28	27	27
Std. Deviation	7.3	7.4	7.3	5.9	7.2	7.1	7.0	7.0	5.8	7.3	5.9	5.9
% BMI > 30	32%	34%	34%	31%	33%	32%	33%	31%	34%	34%	31%	29%



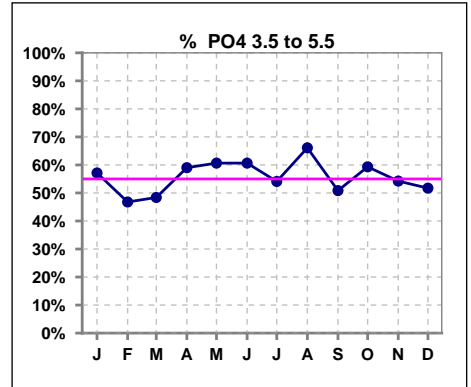
Lab methodology for PTH changed January 2012

III. OSTEODYSTROPHY

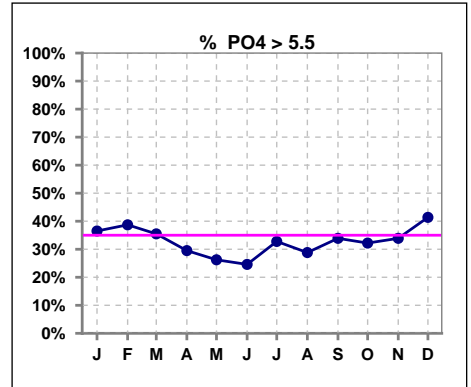
	Jan	Feb	Mar	Apr	May	Jun	Jul	Aug	Sep	Oct	Nov	Dec
# PO4	63	62	62	61	61	61	61	59	59	59	59	58
# PO4 < 3.5	4	9	10	7	8	9	8	3	9	5	7	4
Pop. Mean	5.4	5.3	5.2	5.2	4.9	5.0	5.1	5.2	5.1	5.1	5.2	5.3
Std. Deviation	1.51	1.76	1.71	1.41	1.60	1.45	1.40	1.39	1.56	1.46	1.43	1.48
% PO4 < 3.5	6%	15%	16%	11%	13%	15%	13%	5%	15%	8%	12%	7%



	Jan	Feb	Mar	Apr	May	Jun	Jul	Aug	Sep	Oct	Nov	Dec
# PO4	63	62	62	61	61	61	61	59	59	59	59	58
# PO4 3.5 to 5.5	36	29	30	36	37	37	33	39	30	35	32	30
Pop. Mean	5.4	5.3	5.2	5.2	4.9	5.0	5.1	5.2	5.1	5.1	5.2	5.3
Std. Deviation	1.51	1.76	1.71	1.41	1.60	1.45	1.40	1.39	1.56	1.46	1.43	1.48
% PO4 3.5 to 5.5	57%	47%	48%	59%	61%	61%	54%	66%	51%	59%	54%	52%



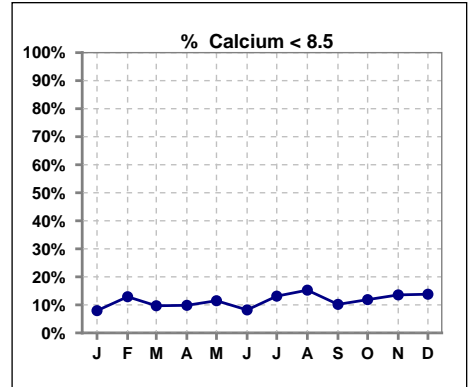
	Jan	Feb	Mar	Apr	May	Jun	Jul	Aug	Sep	Oct	Nov	Dec
# PO4	63	62	62	61	61	61	61	59	59	59	59	58
# PO4 > 5.5	23	24	22	18	16	15	20	17	20	19	20	24
Pop. Mean	5.4	5.3	5.2	5.2	4.9	5.0	5.1	5.2	5.1	5.1	5.2	5.3
Std. Deviation	1.51	1.76	1.71	1.41	1.60	1.45	1.40	1.39	1.56	1.46	1.43	1.48
% PO4 > 5.5	37%	39%	35%	30%	26%	25%	33%	29%	34%	32%	34%	41%



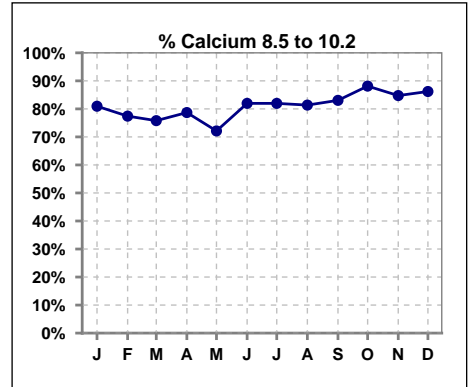
Lab methodology for PTH changed January 2012

III. OSTEODYSTROPHY - CONT.

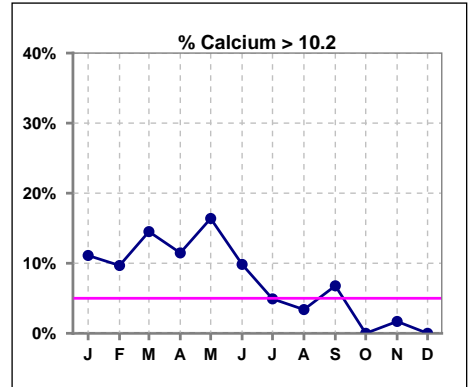
	Jan	Feb	Mar	Apr	May	Jun	Jul	Aug	Sep	Oct	Nov	Dec
# Calcium	63	62	62	61	61	61	61	59	59	59	59	58
# Calcium < 8.5	5	8	6	6	7	5	8	9	6	7	8	8
Pop. Mean	9.4	9.4	9.4	9.4	9.4	9.4	9.1	9.2	9.2	9.1	9.2	9.2
Std. Deviation	0.73	0.73	0.85	0.81	0.80	0.70	0.68	0.68	0.69	0.61	0.67	0.66
% Calcium < 8.5	8%	13%	10%	10%	11%	8%	13%	15%	10%	12%	14%	14%



	Jan	Feb	Mar	Apr	May	Jun	Jul	Aug	Sep	Oct	Nov	Dec
# Calcium	63	62	62	61	61	61	61	59	59	59	59	58
# Calcium 8.5 to 10.2	51	48	47	48	44	50	50	48	49	52	50	50
Pop. Mean	9.4	9.4	9.4	9.4	9.4	9.4	9.1	9.2	9.2	9.1	9.2	9.2
Std. Deviation	0.73	0.73	0.85	0.81	0.80	0.70	0.68	0.68	0.69	0.61	0.67	0.66
% Calcium 8.5 to 10.2	81%	77%	76%	79%	72%	82%	82%	81%	83%	88%	85%	86%



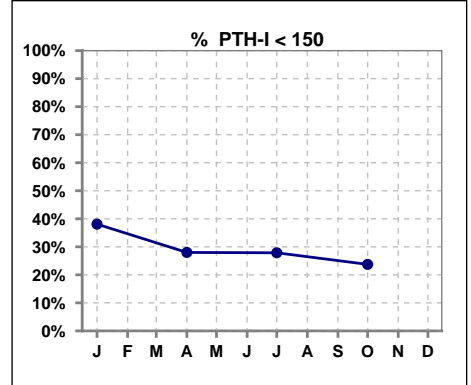
	Jan	Feb	Mar	Apr	May	Jun	Jul	Aug	Sep	Oct	Nov	Dec
# Calcium	63	62	62	61	61	61	61	59	59	59	59	58
# Calcium > 10.2	7	6	9	7	10	6	3	2	4	0	1	0
Pop. Mean	9.4	9.4	9.4	9.4	9.4	9.4	9.1	9.2	9.2	9.1	9.2	9.2
Std. Deviation	0.73	0.73	0.85	0.81	0.80	0.70	0.68	0.68	0.69	0.61	0.67	0.66
% Calcium > 10.2	11%	10%	15%	11%	16%	10%	5%	3%	7%	0%	2%	0%



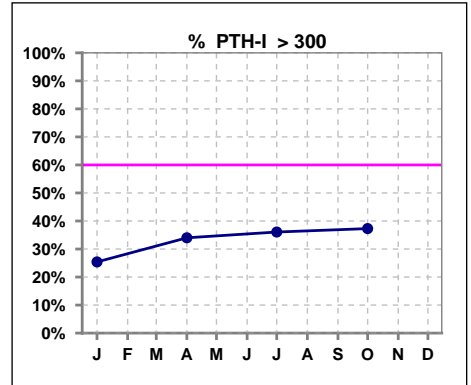
Lab methodology for PTH changed January 2012

III. OSTEODYSTROPHY - CONT.

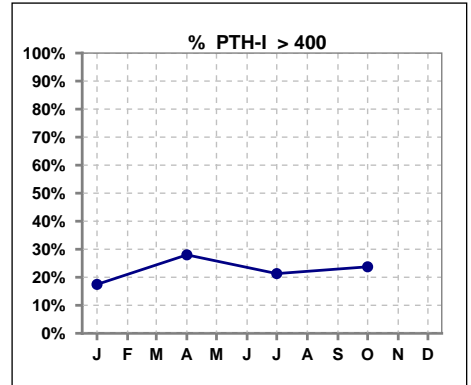
	Jan	Feb	Mar	Apr	May	Jun	Jul	Aug	Sep	Oct	Nov	Dec
# PTH-I	63			50			61			59		
# PTH-I < 150	24			14			17			14		
Pop. Mean	262			317			331			322		
Std. Deviation	243			330			369			304		
% PTH-I < 150	38%			28%			28%			24%		



	Jan	Feb	Mar	Apr	May	Jun	Jul	Aug	Sep	Oct	Nov	Dec
# PTH-I	63			50			61			59		
# PTH-I > 300	16			17			22			22		
Pop. Mean	262			317			331			322		
Std. Deviation	243			330			369			304		
% PTH-I > 300	25%			34%			36%			37%		



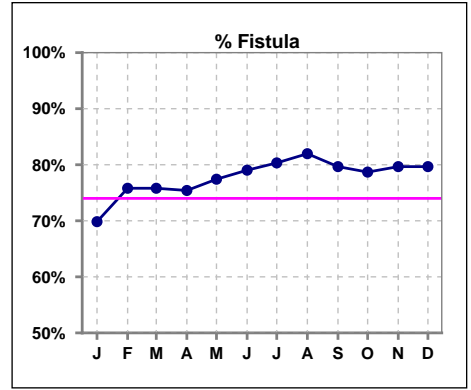
	Jan	Feb	Mar	Apr	May	Jun	Jul	Aug	Sep	Oct	Nov	Dec
# PTH-I	63			50			61			59		
# PTH-I > 400	11			14			13			14		
Pop. Mean	262			317			331			322		
Std. Deviation	243			330			369			304		
% PTH-I > 400	17%			28%			21%			24%		



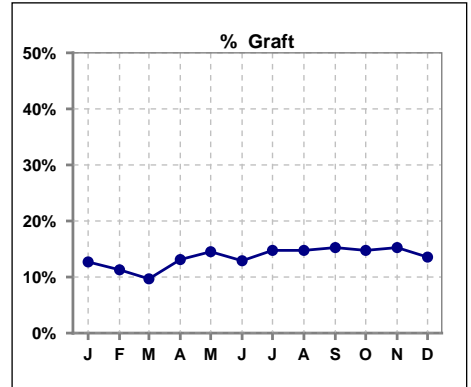
Methodology: a) All labs for 'Adequacy of Dialysis', 'Nutrition', 'Osteodystrophy', 'Anemia' and 'Diabetes' based on last value of month; b) BP's and #L processed are average of all values for month; c) Access data takes last access of month; d) Values for SGA and 'Infection Control' use most recent result.

IV. ACCESS

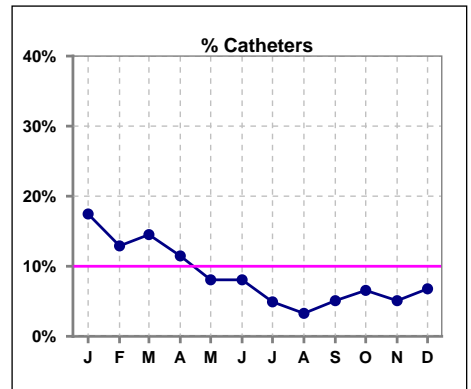
	Jan	Feb	Mar	Apr	May	Jun	Jul	Aug	Sep	Oct	Nov	Dec
# Access	63	62	62	61	62	62	61	61	59	61	59	59
# Fistula	44	47	47	46	48	49	49	50	47	48	47	47
% Fistula	70%	76%	76%	75%	77%	79%	80%	82%	80%	79%	80%	80%



	Jan	Feb	Mar	Apr	May	Jun	Jul	Aug	Sep	Oct	Nov	Dec
# Access	63	62	62	61	62	62	61	61	59	61	59	59
# Graft	8	7	6	8	9	8	9	9	9	9	9	8
% Graft	13%	11%	10%	13%	15%	13%	15%	15%	15%	15%	15%	14%



	Jan	Feb	Mar	Apr	May	Jun	Jul	Aug	Sep	Oct	Nov	Dec
# Access	63	62	62	61	62	62	61	61	59	61	59	59
# Catheters	11	8	9	7	5	5	3	2	3	4	3	4
% Catheters	17%	13%	15%	11%	8%	8%	5%	3%	5%	7%	5%	7%

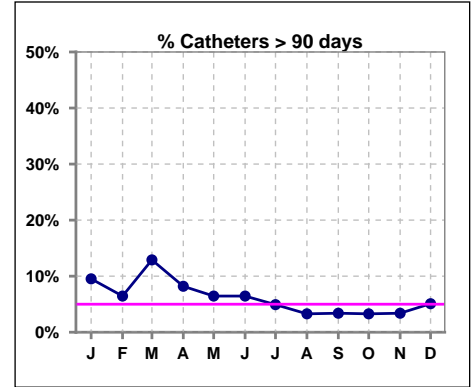


IV. ACCESS - CONT.

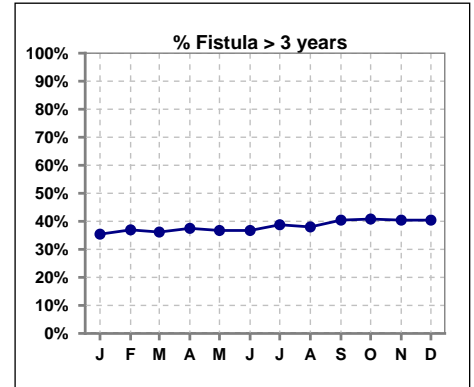
Catheters > 90 days

	Jan	Feb	Mar	Apr	May	Jun	Jul	Aug	Sep	Oct	Nov	Dec
# Access	63	62	62	61	62	62	61	61	59	61	59	59
# Catheters	6	4	8	5	4	4	3	2	2	2	2	3
% Catheters	10%	6%	13%	8%	6%	6%	5%	3%	3%	3%	3%	5%

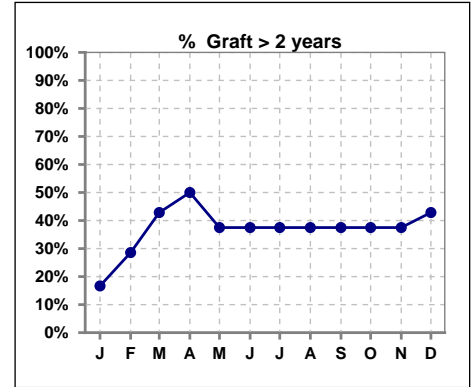
Definition: Catheter in use on last treatment of the month



	Jan	Feb	Mar	Apr	May	Jun	Jul	Aug	Sep	Oct	Nov	Dec
# Fistula	48	46	47	48	49	49	49	50	47	49	47	47
# Fistula > 3 yrs	17	17	17	18	18	18	19	19	19	20	19	19
% Fistula > 3 yrs	35%	37%	36%	38%	37%	37%	39%	38%	40%	41%	40%	40%



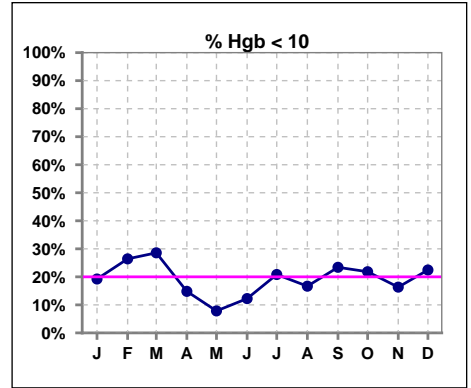
	Jan	Feb	Mar	Apr	May	Jun	Jul	Aug	Sep	Oct	Nov	Dec
# Graft	6	7	7	6	8	8	8	8	8	8	8	7
# Graft > 2 yrs	1	2	3	3	3	3	3	3	3	3	3	3
% Graft > 2 yrs	17%	29%	43%	50%	38%	38%	38%	38%	38%	38%	38%	43%



V. ANEMIA

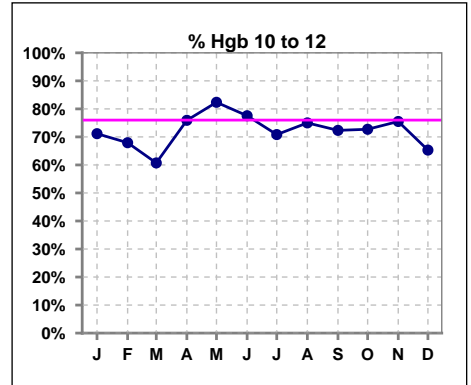
	Jan	Feb	Mar	Apr	May	Jun	Jul	Aug	Sep	Oct	Nov	Dec
# Hgb	52	53	56	54	51	49	48	48	47	55	49	49
# Hgb < 10	10	14	16	8	4	6	10	8	11	12	8	11
Pop. Mean	10.8	10.6	10.7	10.8	11.0	10.9	10.9	10.7	10.4	10.7	10.7	10.6
Std. Deviation	1.1	0.9	1.2	1.0	0.8	1.0	1.0	0.9	1.0	1.0	1.2	1.2
% Hgb < 10	19%	26%	29%	15%	8%	12%	21%	17%	23%	22%	16%	22%

Note: Excludes patients who received no ESA in month.



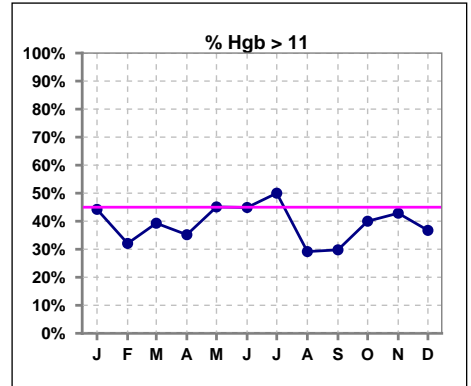
	Jan	Feb	Mar	Apr	May	Jun	Jul	Aug	Sep	Oct	Nov	Dec
# Hgb	52	53	56	54	51	49	48	48	47	55	49	49
# Hgb 10 to 12	37	36	34	41	42	38	34	36	34	40	37	32
Pop. Mean	10.8	10.6	10.7	10.8	11.0	10.9	10.9	10.7	10.4	10.7	10.7	10.6
Std. Deviation	1.1	0.9	1.2	1.0	0.8	1.0	1.0	0.9	1.0	1.0	1.2	1.2
% Hgb 10 to 12	71%	68%	61%	76%	82%	78%	71%	75%	72%	73%	76%	65%

Note: Excludes patients who received no ESA in month.



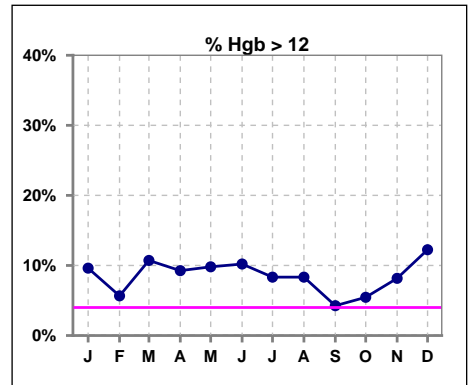
	Jan	Feb	Mar	Apr	May	Jun	Jul	Aug	Sep	Oct	Nov	Dec
# Hgb	52	53	56	54	51	49	48	48	47	55	49	49
# Hgb > 11	23	17	22	19	23	22	24	14	14	22	21	18
Pop. Mean	10.8	10.6	10.7	10.8	11.0	10.9	10.9	10.7	10.4	10.7	10.7	10.6
Std. Deviation	1.1	0.9	1.2	1.0	0.8	1.0	1.0	0.9	1.0	1.0	1.2	1.2
% Hgb > 11	44%	32%	39%	35%	45%	45%	50%	29%	30%	40%	43%	37%

Note: Excludes patients who received no ESA in month.



	Jan	Feb	Mar	Apr	May	Jun	Jul	Aug	Sep	Oct	Nov	Dec
# Hgb	52	53	56	54	51	49	48	48	47	55	49	49
# Hgb > 12	5	3	6	5	5	5	4	4	2	3	4	6
Pop. Mean	10.8	10.6	10.7	10.8	11.0	10.9	10.9	10.7	10.4	10.7	10.7	10.6
Std. Deviation	1.1	0.9	1.2	1.0	0.8	1.0	1.0	0.9	1.0	1.0	1.2	1.2
% Hgb > 12	10%	6%	11%	9%	10%	10%	8%	8%	4%	5%	8%	12%

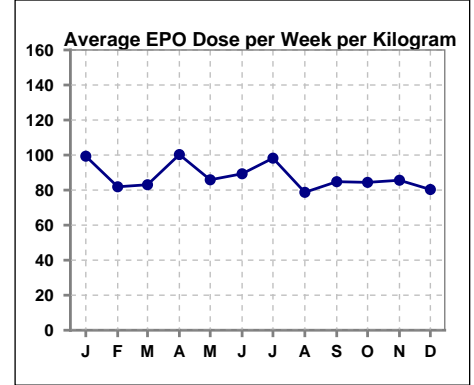
Note: Excludes patients who received no ESA in month.



V. ANEMIA - CONT.

Average EPO Dose per Week per Kilogram

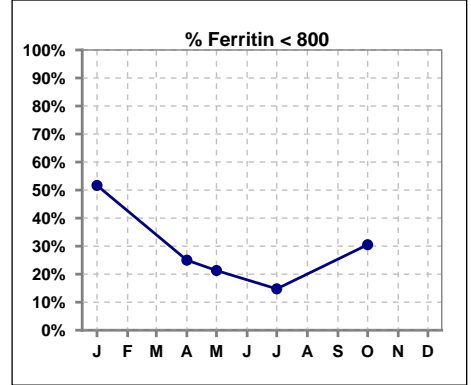
	Jan	Feb	Mar	Apr	May	Jun	Jul	Aug	Sep	Oct	Nov	Dec
# Average EPO	99.4	81.9	83.1	100.3	85.9	89.3	98.2	78.7	84.8	84.4	85.6	80.3



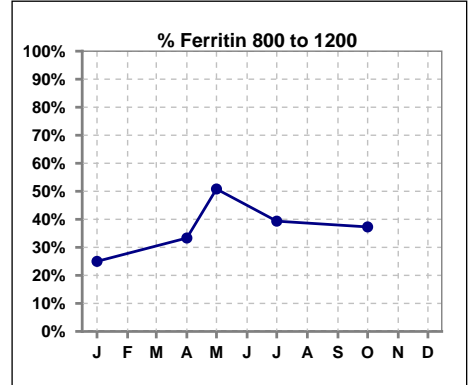
V. ANEMIA - CONT.

Iron Profile

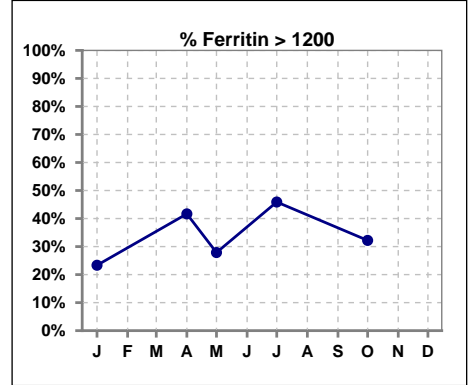
	Jan	Feb	Mar	Apr	May	Jun	Jul	Aug	Sep	Oct	Nov	Dec
# Ferritin	60			60	61		61			59		
# Ferritin < 800	31			15	13		9			18		
Pop. Mean	851			1140	1075		1126			1044		
Std. Deviation	456			417	432		329			382		
% Ferritin < 800	52%			25%	21%		15%			31%		



	Jan	Feb	Mar	Apr	May	Jun	Jul	Aug	Sep	Oct	Nov	Dec
# Ferritin	60			60	61		61			59		
# Ferritin 800 to 1200	15			20	31		24			22		
Pop. Mean	851			1140	1075		1126			1044		
Std. Deviation	456			417	432		329			382		
% Ferritin 800 to 1200	25%			33%	51%		39%			37%		

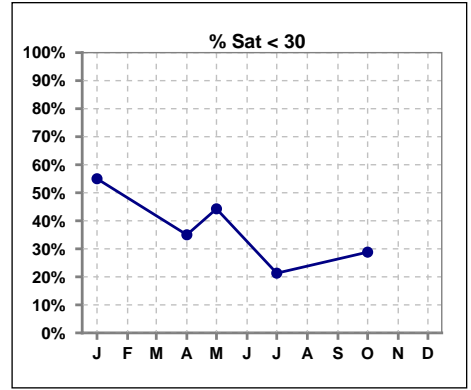


	Jan	Feb	Mar	Apr	May	Jun	Jul	Aug	Sep	Oct	Nov	Dec
# Ferritin	60			60	61		61			59		
# Ferritin > 1200	14			25	17		28			19		
Pop. Mean	851			1140	1075		1126			1044		
Std. Deviation	456			417	432		329			382		
% Ferritin > 1200	23%			42%	28%		46%			32%		

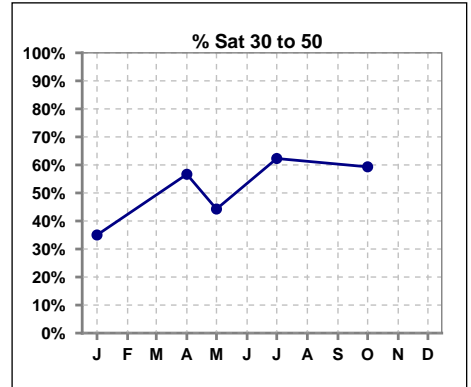


V. ANEMIA - CONT.

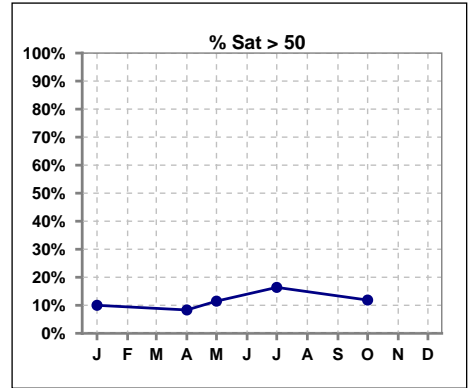
	Jan	Feb	Mar	Apr	May	Jun	Jul	Aug	Sep	Oct	Nov	Dec
# % Sat	60			60	61		61			59		
# % Sat < 30	33			21	27		13			17		
Pop. Mean	31			34	34		40			37		
Std. Deviation	14			13	16		17			15		
%% Sat < 30	55%			35%	44%		21%			29%		



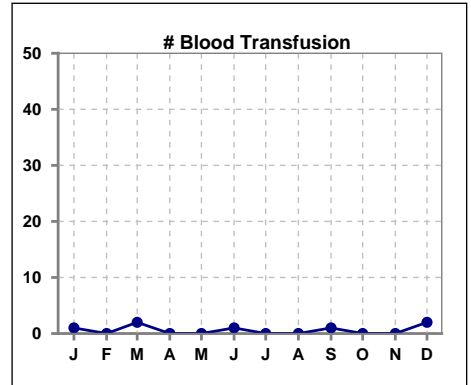
	Jan	Feb	Mar	Apr	May	Jun	Jul	Aug	Sep	Oct	Nov	Dec
# % Sat	60			60	61		61			59		
# % Sat 30 to 50	21			34	27		38			35		
Pop. Mean	31			34	34		40			37		
Std. Deviation	14			13	16		17			15		
%% Sat 30 to 50	35%			57%	44%		62%			59%		



	Jan	Feb	Mar	Apr	May	Jun	Jul	Aug	Sep	Oct	Nov	Dec
# % Sat	60			60	61		61			59		
# % Sat > 50	6			5	7		10			7		
Pop. Mean	31			34	34		40			37		
Std. Deviation	14			13	16		17			15		
%% Sat > 50	10%			8%	11%		16%			12%		

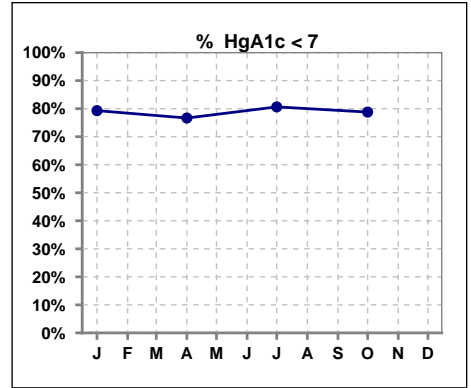


	Jan	Feb	Mar	Apr	May	Jun	Jul	Aug	Sep	Oct	Nov	Dec
# Blood Transfusion	1	0	2	0	0	1	0	0	1	0	0	2



VI. Diabetes

	Jan	Feb	Mar	Apr	May	Jun	Jul	Aug	Sep	Oct	Nov	Dec
# HgA1c	29			30			31			33		
# HgA1c < 7	23			23			25			26		
Pop. Mean	6.6			6.5			6.5			6.4		
Std. Deviation	1.24			1.15			1.12			1.36		
% HgA1c < 7	79%			77%			81%			79%		

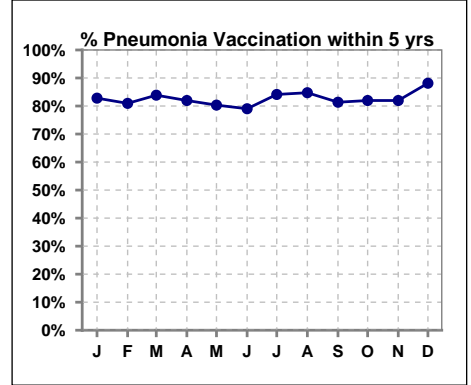


Methodology: a) All labs for 'Adequacy of Dialysis', 'Nutrition', 'Osteodystrophy', 'Anemia' and 'Diabetes' based on last value of month; b) BP's and #L processed are average of all values for month; c) Access data takes last access of month; d) Values for SGA and 'Infection Control' use most recent result.

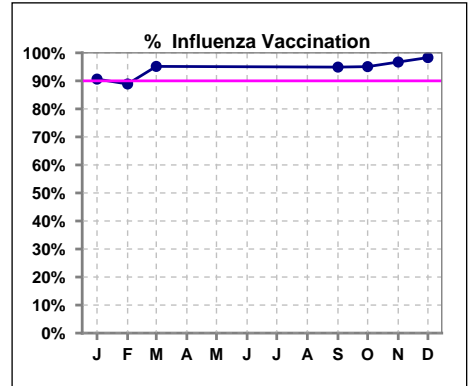
VII. Infection Control

Pneumonia vaccination within the past five years

	Jan	Feb	Mar	Apr	May	Jun	Jul	Aug	Sep	Oct	Nov	Dec
# Patient	64	63	62	61	61	62	63	59	59	61	61	59
# Pneumonia	53	51	52	50	49	49	53	50	48	50	50	52
% Pneumonia	83%	81%	84%	82%	80%	79%	84%	85%	81%	82%	82%	88%



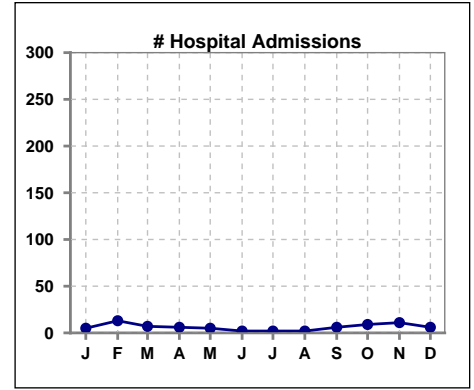
	Jan	Feb	Mar	Apr	May	Jun	Jul	Aug	Sep	Oct	Nov	Dec
# Patient	64	63	62						59	61	61	59
# Influenza	58	56	59						56	58	59	58
% Influenza	91%	89%	95%						95%	95%	97%	98%



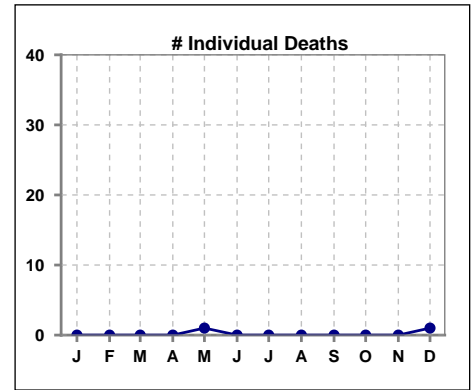
Methodology: a) All labs for 'Adequacy of Dialysis', 'Nutrition', 'Osteodystrophy', 'Anemia' and 'Diabetes' based on last value of month; b) BP's and #L processed are average of all values for month; c) Access data takes last access of month; d) Values for SGA and 'Infection Control' use most recent result.

VIII. Misc

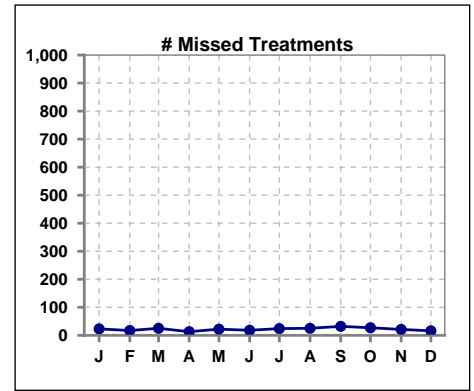
	Jan	Feb	Mar	Apr	May	Jun	Jul	Aug	Sep	Oct	Nov	Dec
# Hospital Admissions	5	13	7	6	5	2	2	2	6	9	11	6



	Jan	Feb	Mar	Apr	May	Jun	Jul	Aug	Sep	Oct	Nov	Dec
# Individual Deaths	0	0	0	0	1	0	0	0	0	0	0	1



	Jan	Feb	Mar	Apr	May	Jun	Jul	Aug	Sep	Oct	Nov	Dec
# Missed Treatments	23	17	25	13	22	18	24	25	32	27	21	16



Methodology: a) All labs for 'Adequacy of Dialysis', 'Nutrition', 'Osteodystrophy', 'Anemia' and 'Diabetes' based on last value of month; b) BP's and #L processed are average of all values for month; c) Access data takes last access of month; d) Values for SGA and 'Infection Control' use most recent result.