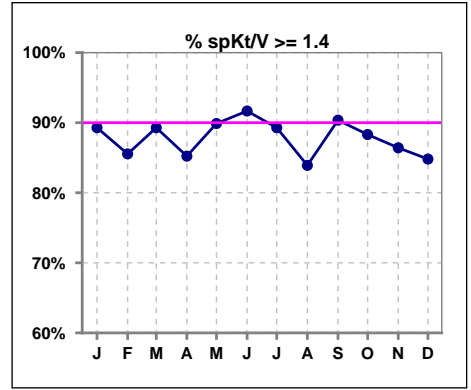
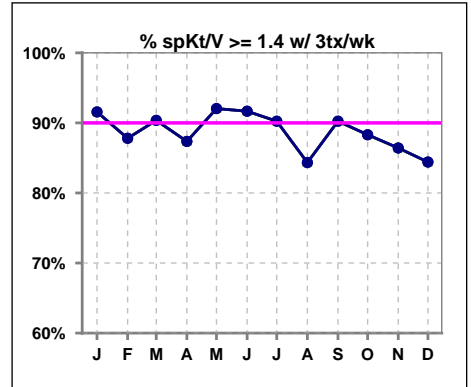


I. ADEQUACY OF DIALYSIS

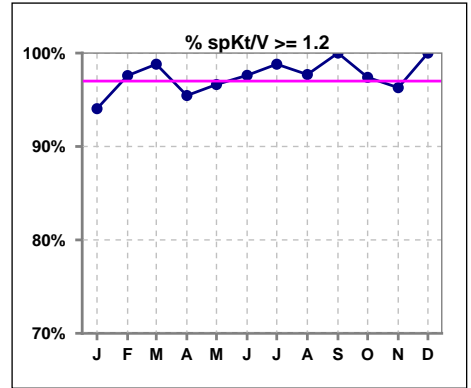
	Jan	Feb	Mar	Apr	May	Jun	Jul	Aug	Sep	Oct	Nov	Dec
# spKt/V	84	83	84	88	89	84	84	87	83	77	81	79
# spKt/V >= 1.4	75	71	75	75	80	77	75	73	75	68	70	67
Pop. Mean	1.67	1.68	1.68	1.70	1.70	1.70	1.67	1.68	1.70	1.65	1.64	1.67
Std. Deviation	0.30	0.33	0.28	0.41	0.30	0.26	0.28	0.27	0.30	0.32	0.27	0.25
% spKt/V >= 1.4	89%	86%	89%	85%	90%	92%	89%	84%	90%	88%	86%	85%



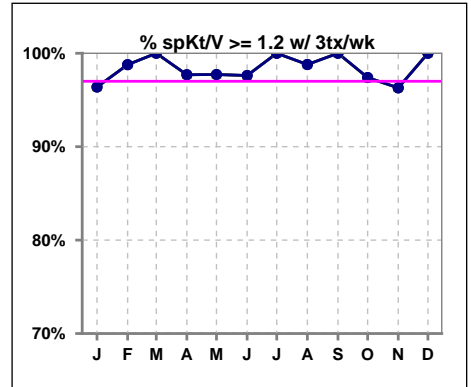
	Jan	Feb	Mar	Apr	May	Jun	Jul	Aug	Sep	Oct	Nov	Dec
# spKt/V w/ 3tx/wk	83	82	83	87	88	84	82	83	82	77	81	77
# spKt/V >= 1.4 w/3tx/wk	76	72	75	76	81	77	74	70	74	68	70	65
Pop. Mean	1.69	1.71	1.69	1.72	1.72	1.70	1.68	1.69	1.70	1.65	1.64	1.67
Std. Deviation	0.28	0.27	0.26	0.39	0.28	0.26	0.27	0.27	0.30	0.32	0.27	0.25
% >= 1.4 w/3tx/wk	92%	88%	90%	87%	92%	92%	90%	84%	90%	88%	86%	84%



	Jan	Feb	Mar	Apr	May	Jun	Jul	Aug	Sep	Oct	Nov	Dec
# spKt/V	84	83	84	88	89	84	84	87	83	77	81	79
# spKt/V >= 1.2	79	81	83	84	86	82	83	85	83	75	78	79
Pop. Mean	1.67	1.68	1.68	1.70	1.70	1.70	1.67	1.68	1.70	1.65	1.64	1.67
Std. Deviation	0.30	0.33	0.28	0.41	0.30	0.26	0.28	0.27	0.30	0.32	0.27	0.25
% spKt/V >= 1.2	94%	98%	99%	95%	97%	98%	99%	98%	100%	97%	96%	100%



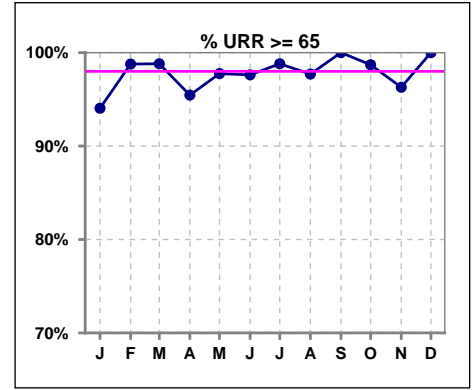
	Jan	Feb	Mar	Apr	May	Jun	Jul	Aug	Sep	Oct	Nov	Dec
# spKt/V w/ 3tx/wk	83	82	83	87	88	84	82	83	82	77	81	77
# spKt/V >= 1.2 w/3tx/wk	80	81	83	85	86	82	82	82	82	75	78	77
Pop. Mean	1.69	1.71	1.69	1.72	1.72	1.70	1.68	1.69	1.70	1.65	1.64	1.67
Std. Deviation	0.28	0.27	0.26	0.39	0.28	0.26	0.27	0.27	0.30	0.32	0.27	0.25
% >= 1.2 w/3tx/wk	96%	99%	100%	98%	98%	98%	100%	99%	100%	97%	96%	100%



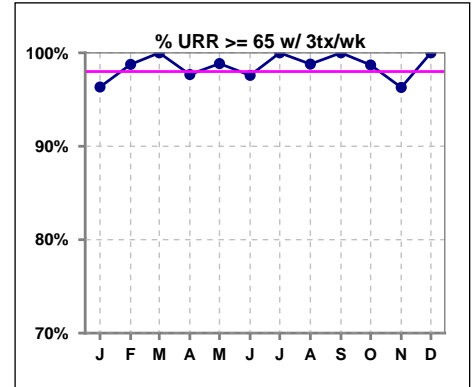
Methodology: a) All labs for 'Adequacy of Dialysis', 'Nutrition', 'Osteodystrophy', 'Anemia' and 'Diabetes' based on last value of month; b) BP's and #L processed are average of all values for month; c) Access data takes last access of month; d) Values for SGA and 'Infection Control' use most recent result.

I. ADEQUACY OF DIALYSIS - CONT.

	Jan	Feb	Mar	Apr	May	Jun	Jul	Aug	Sep	Oct	Nov	Dec
# URR	84	82	84	88	89	84	84	87	83	77	81	79
# URR >= 65	79	81	83	84	87	82	83	85	83	76	78	79
Pop. Mean	76	77	76	76	77	77	76	76	77	76	76	76
Std. Deviation	6.29	5.01	5.66	7.17	5.89	4.94	5.19	5.22	4.83	5.11	6.01	4.81
% URR >= 65	94%	99%	99%	95%	98%	98%	99%	98%	100%	99%	96%	100%



	Jan	Feb	Mar	Apr	May	Jun	Jul	Aug	Sep	Oct	Nov	Dec
# URR w/ 3tx/wk	82	81	82	86	87	83	81	83	82	77	81	77
# URR>=65 w/ 3tx/wk	79	80	82	84	86	81	81	82	82	76	78	77
Pop. Mean	76	77	77	77	77	77	76	77	77	76	76	76
Std. Deviation	5.92	4.95	4.55	5.97	5.18	4.97	4.77	5.10	4.85	5.11	6.01	4.85
% URR>=65 w/ 3tx/wk	96%	99%	100%	98%	99%	98%	100%	99%	100%	99%	96%	100%

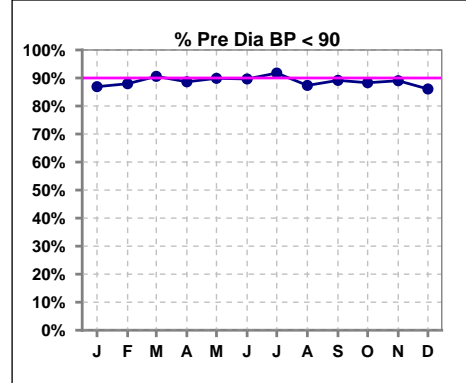


Methodology: a) All labs for 'Adequacy of Dialysis', 'Nutrition', 'Osteodystrophy', 'Anemia' and 'Diabetes' based on last value of month; b) BP's and #L processed are average of all values for month; c) Access data takes last access of month; d) Values for SGA and 'Infection Control' use most recent result.

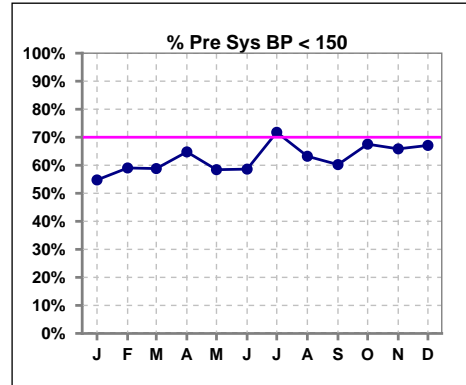
I. ADEQUACY OF DIALYSIS - CONT.

Blood Pressure Control (Pre)

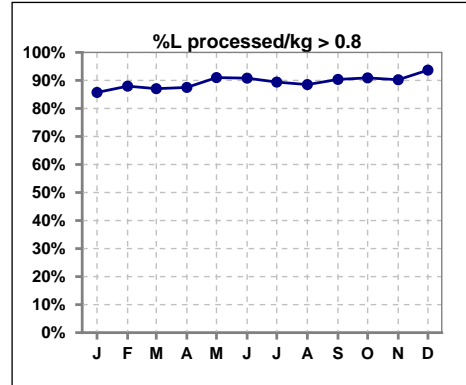
	Jan	Feb	Mar	Apr	May	Jun	Jul	Aug	Sep	Oct	Nov	Dec
# Pre Dia BP	84	83	85	88	89	87	85	87	83	77	82	79
# Pre Dia BP < 90	73	73	77	78	80	78	78	76	74	68	73	68
Pop. Mean	73	72	72	71	71	73	72	73	74	73	71	73
Std. Deviation	14.2	14.1	12.8	13.4	12.7	14.3	12.8	13.2	11.9	12.3	12.9	13.8
% Pre Dia BP < 90	87%	88%	91%	89%	90%	90%	92%	87%	89%	88%	89%	86%



	Jan	Feb	Mar	Apr	May	Jun	Jul	Aug	Sep	Oct	Nov	Dec
# Pre Sys BP	84	83	85	88	89	87	85	87	83	77	82	79
# Pre Sys BP < 150	46	49	50	57	52	51	61	55	50	52	54	53
Pop. Mean	145	142	143	141	141	142	141	142	143	140	140	141
Std. Deviation	20.3	19.3	20.7	21.2	20.3	19.8	20.0	18.8	19.8	20.2	22.4	21.8
%Pre Sys BP <150	55%	59%	59%	65%	58%	59%	72%	63%	60%	68%	66%	67%

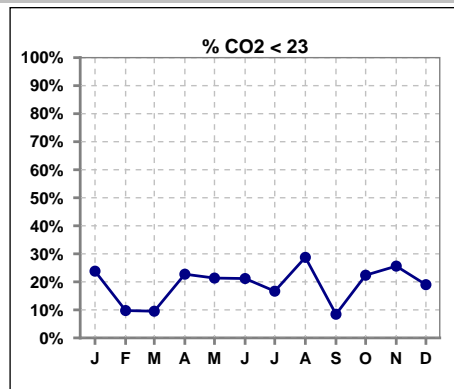


	Jan	Feb	Mar	Apr	May	Jun	Jul	Aug	Sep	Oct	Nov	Dec
# L processed/kg	84	83	85	88	89	87	85	87	83	77	82	79
# L processed/kg>0.8	72	73	74	77	81	79	76	77	75	70	74	74
Pop. Mean	1	1	1	1	1	1	1	1	1	1	1	1
Std. Deviation	0.2	0.3	0.2	0.3	0.3	0.3	0.3	0.3	0.3	0.2	0.2	0.2
% L processed/kg>0.8	86%	88%	87%	88%	91%	91%	89%	89%	90%	91%	90%	94%

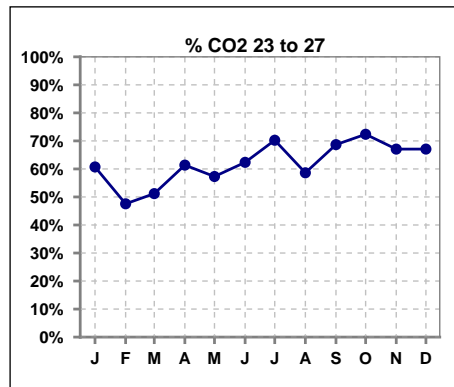


I. ADEQUACY OF DIALYSIS - CONT.

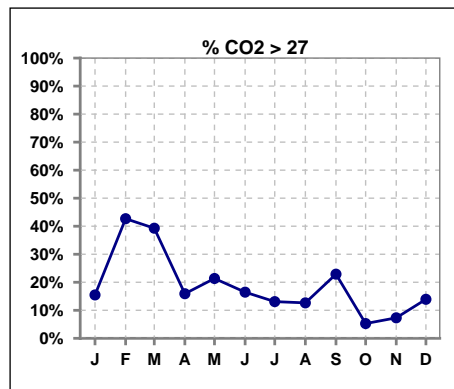
	Jan	Feb	Mar	Apr	May	Jun	Jul	Aug	Sep	Oct	Nov	Dec
# CO2	84	82	84	88	89	85	84	87	83	76	82	79
# CO2 < 23	20	8	8	20	19	18	14	25	7	17	21	15
Pop. Mean	25	27	26	25	25	25	25	24	26	24	24	25
Std. Deviation	2.94	2.62	2.85	2.93	2.71	2.58	2.44	2.76	2.39	2.45	2.71	2.39
% CO2 < 23	24%	10%	10%	23%	21%	21%	17%	29%	8%	22%	26%	19%



	Jan	Feb	Mar	Apr	May	Jun	Jul	Aug	Sep	Oct	Nov	Dec
# CO2	84	82	84	88	89	85	84	87	83	76	82	79
# CO2 23 to 27	51	39	43	54	51	53	59	51	57	55	55	53
Pop. Mean	25	27	26	25	25	25	25	24	26	24	24	25
Std. Deviation	2.94	2.62	2.85	2.93	2.71	2.58	2.44	2.76	2.39	2.45	2.71	2.39
% CO2 23 to 27	61%	48%	51%	61%	57%	62%	70%	59%	69%	72%	67%	67%



	Jan	Feb	Mar	Apr	May	Jun	Jul	Aug	Sep	Oct	Nov	Dec
# CO2	84	82	84	88	89	85	84	87	83	76	82	79
# CO2 > 27	13	35	33	14	19	14	11	11	19	4	6	11
Pop. Mean	25	27	26	25	25	25	25	24	26	24	24	25
Std. Deviation	2.94	2.62	2.85	2.93	2.71	2.58	2.44	2.76	2.39	2.45	2.71	2.39
% CO2 > 27	15%	43%	39%	16%	21%	16%	13%	13%	23%	5%	7%	14%

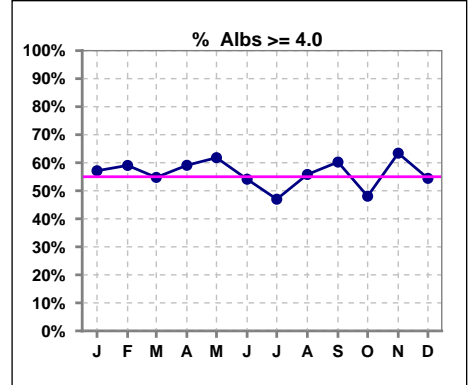


Methodology: a) All labs for 'Adequacy of Dialysis', 'Nutrition', 'Osteodystrophy', 'Anemia' and 'Diabetes' based on last value of month; b) BP's and #L processed are average of all values for month; c) Access data takes last access of month; d) Values for SGA and 'Infection Control' use most recent result.

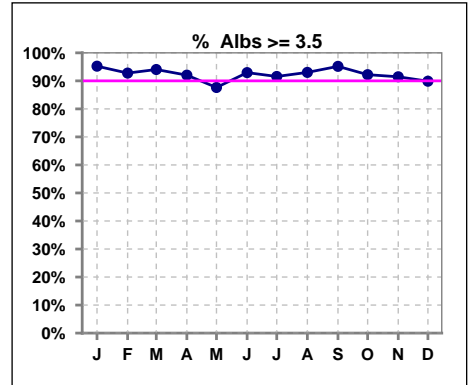
*Albumin values use BCG method - as of July 2001

II. NUTRITION

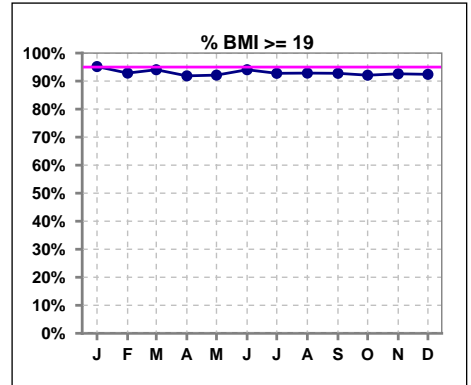
	Jan	Feb	Mar	Apr	May	Jun	Jul	Aug	Sep	Oct	Nov	Dec
# Albumin	84	83	84	88	89	85	83	86	83	77	82	79
# Albumin >= 4.0	48	49	46	52	55	46	39	48	50	37	52	43
Pop. Mean	4.0	4.0	4.0	4.0	4.0	3.9	3.9	4.0	4.0	3.9	4.0	3.9
Std. Deviation	0.33	0.38	0.33	0.33	0.41	0.33	0.35	0.37	0.31	0.32	0.35	0.39
% Alb >= 4.0	57%	59%	55%	59%	62%	54%	47%	56%	60%	48%	63%	54%



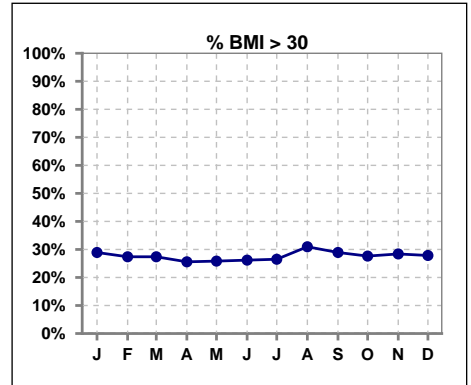
	Jan	Feb	Mar	Apr	May	Jun	Jul	Aug	Sep	Oct	Nov	Dec
# Albumin	84	83	84	88	89	85	83	86	83	77	82	79
# Albumin >= 3.5	80	77	79	81	78	79	76	80	79	71	75	71
Pop. Mean	4.0	4.0	4.0	4.0	4.0	3.9	3.9	4.0	4.0	3.9	4.0	3.9
Std. Deviation	0.33	0.38	0.33	0.33	0.41	0.33	0.35	0.37	0.31	0.32	0.35	0.39
% Alb >= 3.5	95%	93%	94%	92%	88%	93%	92%	93%	95%	92%	91%	90%



	Jan	Feb	Mar	Apr	May	Jun	Jul	Aug	Sep	Oct	Nov	Dec
# BMI	83	84	84	86	89	84	83	84	83	76	81	79
# BMI >= 19	79	78	79	79	82	79	77	78	77	70	75	73
Pop. Mean	28	28	28	27	27	27	27	27	27	27	27	27
Std. Deviation	7.3	7.3	7.1	6.8	6.9	6.7	6.7	6.7	6.5	5.9	6.6	6.7
% BMI >= 19	95%	93%	94%	92%	92%	94%	93%	93%	93%	92%	93%	92%



	Jan	Feb	Mar	Apr	May	Jun	Jul	Aug	Sep	Oct	Nov	Dec
# BMI	83	84	84	86	89	84	83	84	83	76	81	79
# BMI > 30	24	23	23	22	23	22	22	26	24	21	23	22
Pop. Mean	28	28	28	27	27	27	27	27	27	27	27	27
Std. Deviation	7.3	7.3	7.1	6.8	6.9	6.7	6.7	6.7	6.5	5.9	6.6	6.7
% BMI > 30	29%	27%	27%	26%	26%	26%	27%	31%	29%	28%	28%	28%

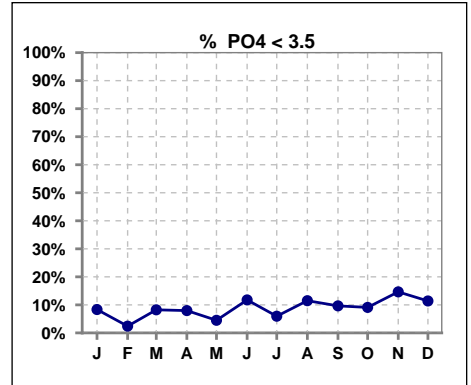


Methodology: a) All labs for 'Adequacy of Dialysis', 'Nutrition', 'Osteodystrophy', 'Anemia' and 'Diabetes' based on last value of month; b) BP's and #L processed are average of all values for month; c) Access data takes last access of month; d) Values for SGA and 'Infection Control' use most recent result.

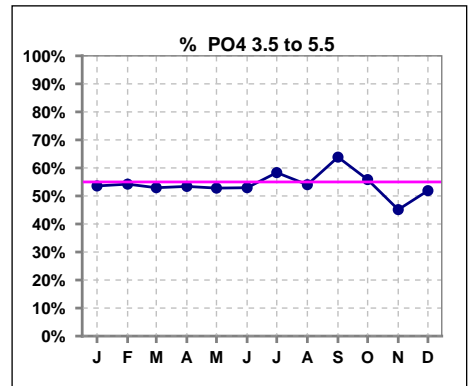
Lab methodology for PTH changed January 2012

III. OSTEODYSTROPHY

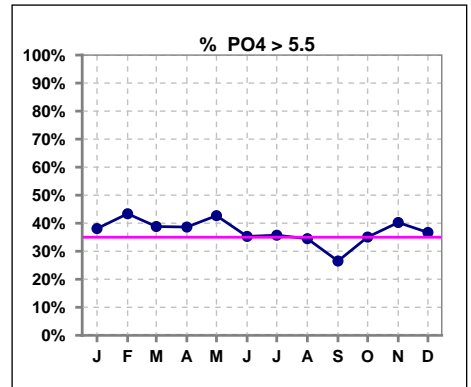
	Jan	Feb	Mar	Apr	May	Jun	Jul	Aug	Sep	Oct	Nov	Dec
# PO4	84	83	85	88	89	85	84	87	83	77	82	79
# PO4 < 3.5	7	2	7	7	4	10	5	10	8	7	12	9
Pop. Mean	5.5	5.7	5.6	5.4	5.6	5.4	5.4	5.2	5.1	5.2	5.3	5.3
Std. Deviation	1.60	1.78	2.02	1.79	1.53	1.94	1.64	1.55	1.41	1.27	1.77	1.81
% PO4 < 3.5	8%	2%	8%	8%	4%	12%	6%	11%	10%	9%	15%	11%



	Jan	Feb	Mar	Apr	May	Jun	Jul	Aug	Sep	Oct	Nov	Dec
# PO4	84	83	85	88	89	85	84	87	83	77	82	79
# PO4 3.5 to 5.5	45	45	45	47	47	45	49	47	53	43	37	41
Pop. Mean	5.5	5.7	5.6	5.4	5.6	5.4	5.4	5.2	5.1	5.2	5.3	5.3
Std. Deviation	1.60	1.78	2.02	1.79	1.53	1.94	1.64	1.55	1.41	1.27	1.77	1.81
% PO4 3.5 to 5.5	54%	54%	53%	53%	53%	53%	58%	54%	64%	56%	45%	52%



	Jan	Feb	Mar	Apr	May	Jun	Jul	Aug	Sep	Oct	Nov	Dec
# PO4	84	83	85	88	89	85	84	87	83	77	82	79
# PO4 > 5.5	32	36	33	34	38	30	30	30	22	27	33	29
Pop. Mean	5.5	5.7	5.6	5.4	5.6	5.4	5.4	5.2	5.1	5.2	5.3	5.3
Std. Deviation	1.60	1.78	2.02	1.79	1.53	1.94	1.64	1.55	1.41	1.27	1.77	1.81
% PO4 > 5.5	38%	43%	39%	39%	43%	35%	36%	34%	27%	35%	40%	37%

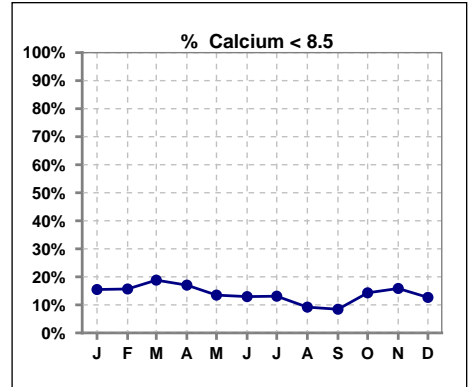


Methodology: a) All labs for 'Adequacy of Dialysis', 'Nutrition', 'Osteodystrophy', 'Anemia' and 'Diabetes' based on last value of month; b) BP's and #L processed are average of all values for month; c) Access data takes last access of month; d) Values for SGA and 'Infection Control' use most recent result.

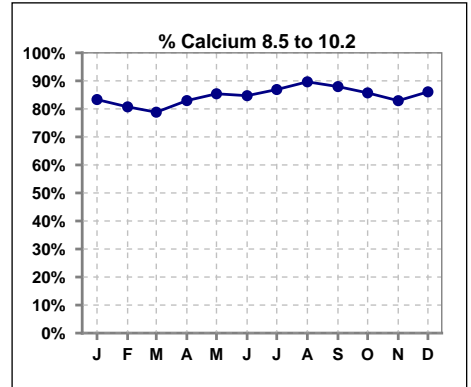
Lab methodology for PTH changed January 2012

III. OSTEODYSTROPHY - CONT.

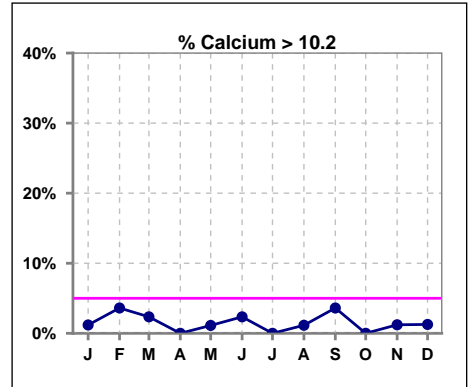
	Jan	Feb	Mar	Apr	May	Jun	Jul	Aug	Sep	Oct	Nov	Dec
# Calcium	84	83	85	88	89	85	84	87	83	77	82	79
# Calcium < 8.5	13	13	16	15	12	11	11	8	7	11	13	10
Pop. Mean	9.2	9.2	9.2	9.0	9.2	9.1	9.1	9.2	9.2	9.2	9.1	9.3
Std. Deviation	0.62	0.72	0.70	0.61	0.61	0.66	0.62	0.60	0.68	0.68	0.71	0.65
% Calcium < 8.5	15%	16%	19%	17%	13%	13%	13%	9%	8%	14%	16%	13%



	Jan	Feb	Mar	Apr	May	Jun	Jul	Aug	Sep	Oct	Nov	Dec
# Calcium	84	83	85	88	89	85	84	87	83	77	82	79
# Calcium 8.5 to 10.2	70	67	67	73	76	72	73	78	73	66	68	68
Pop. Mean	9.2	9.2	9.2	9.0	9.2	9.1	9.1	9.2	9.2	9.2	9.1	9.3
Std. Deviation	0.62	0.72	0.70	0.61	0.61	0.66	0.62	0.60	0.68	0.68	0.71	0.65
% Calcium 8.5 to 10.2	83%	81%	79%	83%	85%	85%	87%	90%	88%	86%	83%	86%



	Jan	Feb	Mar	Apr	May	Jun	Jul	Aug	Sep	Oct	Nov	Dec
# Calcium	84	83	85	88	89	85	84	87	83	77	82	79
# Calcium > 10.2	1	3	2	0	1	2	0	1	3	0	1	1
Pop. Mean	9.2	9.2	9.2	9.0	9.2	9.1	9.1	9.2	9.2	9.2	9.1	9.3
Std. Deviation	0.62	0.72	0.70	0.61	0.61	0.66	0.62	0.60	0.68	0.68	0.71	0.65
% Calcium > 10.2	1%	4%	2%	0%	1%	2%	0%	1%	4%	0%	1%	1%

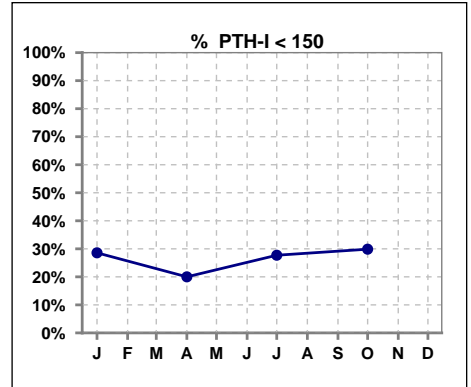


Methodology: a) All labs for 'Adequacy of Dialysis', 'Nutrition', 'Osteodystrophy', 'Anemia' and 'Diabetes' based on last value of month; b) BP's and #L processed are average of all values for month; c) Access data takes last access of month; d) Values for SGA and 'Infection Control' use most recent result.

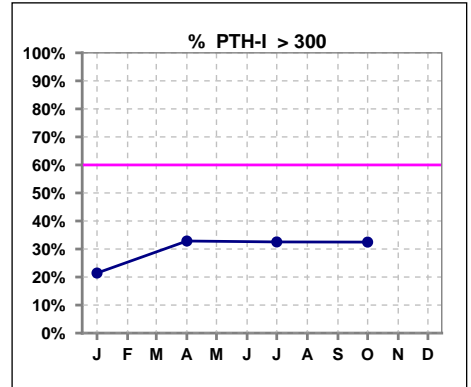
Lab methodology for PTH changed January 2012

III. OSTEODYSTROPHY - CONT.

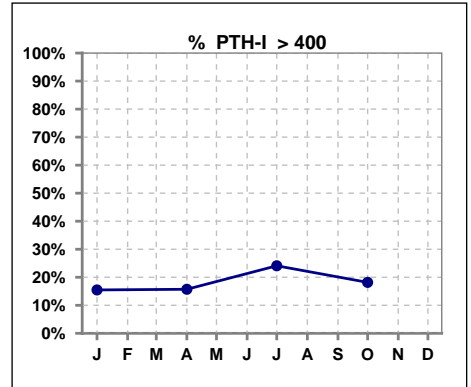
	Jan	Feb	Mar	Apr	May	Jun	Jul	Aug	Sep	Oct	Nov	Dec
# PTH-I	84			70			83			77		
# PTH-I < 150	24			14			23			23		
Pop. Mean	241			272			274			248		
Std. Deviation	166			205			200			174		
% PTH-I < 150	29%			20%			28%			30%		



	Jan	Feb	Mar	Apr	May	Jun	Jul	Aug	Sep	Oct	Nov	Dec
# PTH-I	84			70			83			77		
# PTH-I > 300	18			23			27			25		
Pop. Mean	241			272			274			248		
Std. Deviation	166			205			200			174		
% PTH-I > 300	21%			33%			33%			32%		



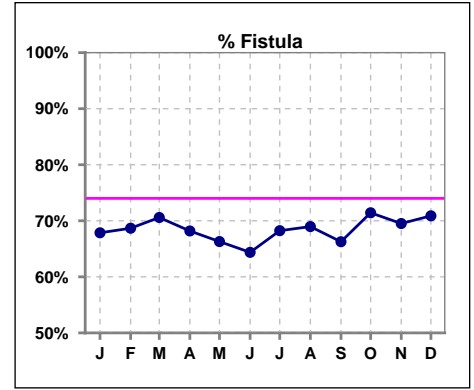
	Jan	Feb	Mar	Apr	May	Jun	Jul	Aug	Sep	Oct	Nov	Dec
# PTH-I	84			70			83			77		
# PTH-I > 400	13			11			20			14		
Pop. Mean	241			272			274			248		
Std. Deviation	166			205			200			174		
% PTH-I > 400	15%			16%			24%			18%		



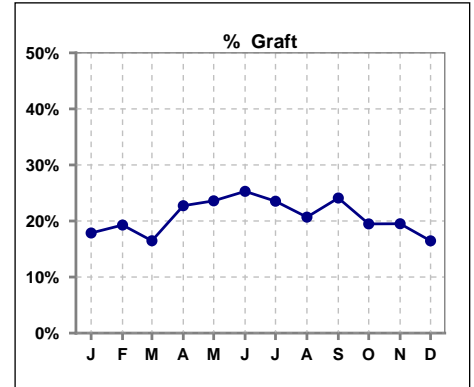
Methodology: a) All labs for 'Adequacy of Dialysis', 'Nutrition', 'Osteodystrophy', 'Anemia' and 'Diabetes' based on last value of month; b) BP's and #L processed are average of all values for month; c) Access data takes last access of month; d) Values for SGA and 'Infection Control' use most recent result.

IV. ACCESS

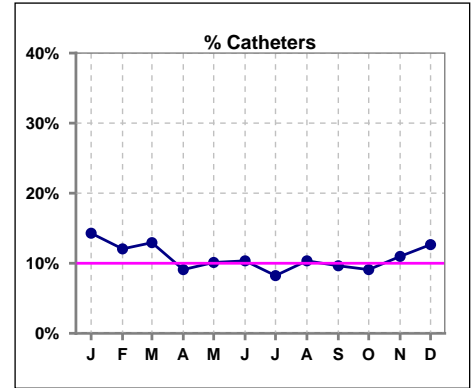
	Jan	Feb	Mar	Apr	May	Jun	Jul	Aug	Sep	Oct	Nov	Dec
# Access	84	83	85	88	89	87	85	87	83	77	82	79
# Fistula	57	57	60	60	59	56	58	60	55	55	57	56
% Fistula	68%	69%	71%	68%	66%	64%	68%	69%	66%	71%	70%	71%



	Jan	Feb	Mar	Apr	May	Jun	Jul	Aug	Sep	Oct	Nov	Dec
# Access	84	83	85	88	89	87	85	87	83	77	82	79
# Graft	15	16	14	20	21	22	20	18	20	15	16	13
% Graft	18%	19%	16%	23%	24%	25%	24%	21%	24%	19%	20%	16%



	Jan	Feb	Mar	Apr	May	Jun	Jul	Aug	Sep	Oct	Nov	Dec
# Access	84	83	85	88	89	87	85	87	83	77	82	79
# Catheters	12	10	11	8	9	9	7	9	8	7	9	10
% Catheters	14%	12%	13%	9%	10%	10%	8%	10%	10%	9%	11%	13%

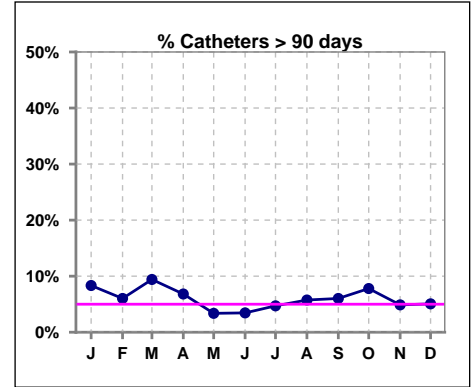


IV. ACCESS - CONT.

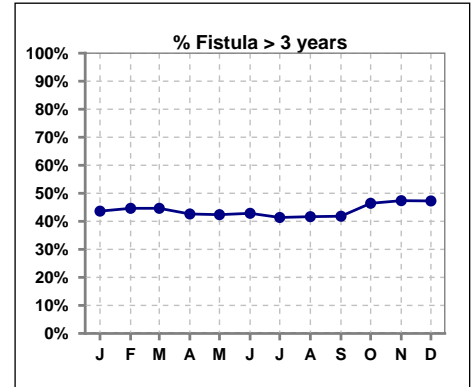
Catheters > 90 days

	Jan	Feb	Mar	Apr	May	Jun	Jul	Aug	Sep	Oct	Nov	Dec
# Access	84	83	85	88	89	87	85	87	83	77	82	79
# Catheters	7	5	8	6	3	3	4	5	5	6	4	4
% Catheters	8%	6%	9%	7%	3%	3%	5%	6%	6%	8%	5%	5%

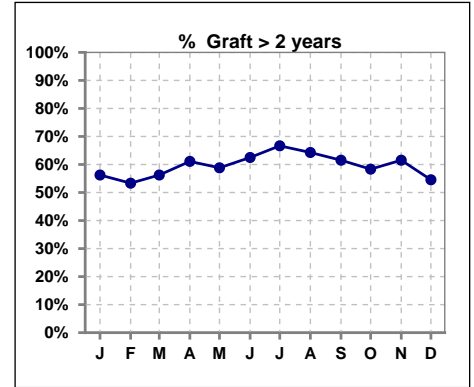
Definition: Catheter in use on last treatment of the month



	Jan	Feb	Mar	Apr	May	Jun	Jul	Aug	Sep	Oct	Nov	Dec
# Fistula	55	56	56	61	59	56	58	60	55	56	57	55
# Fistula > 3 yrs	24	25	25	26	25	24	24	25	23	26	27	26
% Fistula > 3 yrs	44%	45%	45%	43%	42%	43%	41%	42%	42%	46%	47%	47%



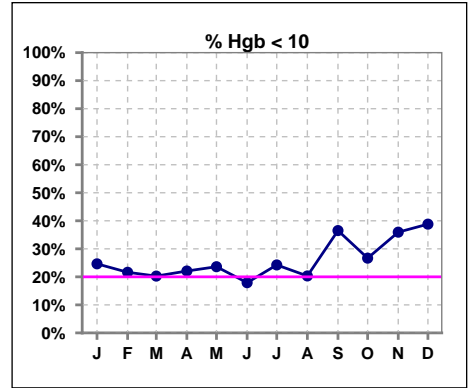
	Jan	Feb	Mar	Apr	May	Jun	Jul	Aug	Sep	Oct	Nov	Dec
# Graft	16	15	16	18	17	16	15	14	13	12	13	11
# Graft > 2 yrs	9	8	9	11	10	10	10	9	8	7	8	6
% Graft > 2 yrs	56%	53%	56%	61%	59%	63%	67%	64%	62%	58%	62%	55%



V. ANEMIA

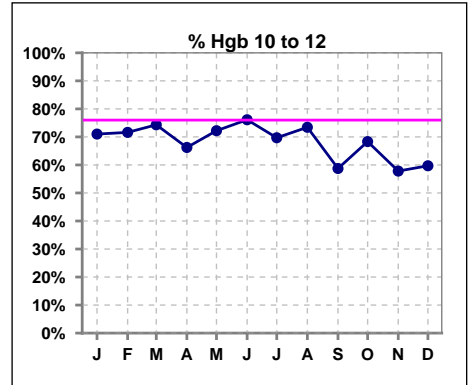
	Jan	Feb	Mar	Apr	May	Jun	Jul	Aug	Sep	Oct	Nov	Dec
# Hgb	69	74	74	77	72	67	66	64	63	60	64	67
# Hgb < 10	17	16	15	17	17	12	16	13	23	16	23	26
Pop. Mean	10.6	10.6	10.6	10.7	10.6	10.7	10.7	10.7	10.3	10.5	10.3	10.2
Std. Deviation	0.9	0.9	1.0	1.2	1.0	1.1	0.9	1.0	1.2	1.1	1.3	1.0
% Hgb < 10	25%	22%	20%	22%	24%	18%	24%	20%	37%	27%	36%	39%

Note: Excludes patients who received no ESA in month.



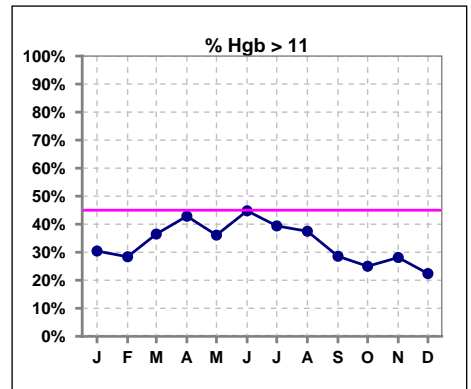
	Jan	Feb	Mar	Apr	May	Jun	Jul	Aug	Sep	Oct	Nov	Dec
# Hgb	69	74	74	77	72	67	66	64	63	60	64	67
# Hgb 10 to 12	49	53	55	51	52	51	46	47	37	41	37	40
Pop. Mean	10.6	10.6	10.6	10.7	10.6	10.7	10.7	10.7	10.3	10.5	10.3	10.2
Std. Deviation	0.9	0.9	1.0	1.2	1.0	1.1	0.9	1.0	1.2	1.1	1.3	1.0
% Hgb 10 to 12	71%	72%	74%	66%	72%	76%	70%	73%	59%	68%	58%	60%

Note: Excludes patients who received no ESA in month.



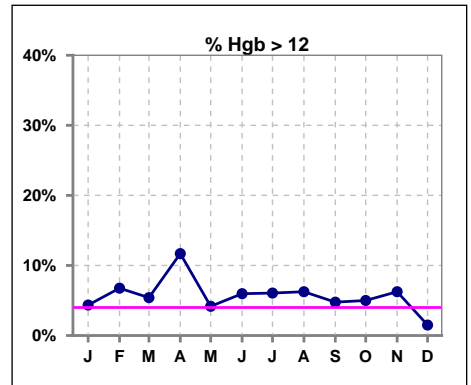
	Jan	Feb	Mar	Apr	May	Jun	Jul	Aug	Sep	Oct	Nov	Dec
# Hgb	69	74	74	77	72	67	66	64	63	60	64	67
# Hgb > 11	21	21	27	33	26	30	26	24	18	15	18	15
Pop. Mean	10.6	10.6	10.6	10.7	10.6	10.7	10.7	10.7	10.3	10.5	10.3	10.2
Std. Deviation	0.9	0.9	1.0	1.2	1.0	1.1	0.9	1.0	1.2	1.1	1.3	1.0
% Hgb > 11	30%	28%	36%	43%	36%	45%	39%	38%	29%	25%	28%	22%

Note: Excludes patients who received no ESA in month.



	Jan	Feb	Mar	Apr	May	Jun	Jul	Aug	Sep	Oct	Nov	Dec
# Hgb	69	74	74	77	72	67	66	64	63	60	64	67
# Hgb > 12	3	5	4	9	3	4	4	4	3	3	4	1
Pop. Mean	10.6	10.6	10.6	10.7	10.6	10.7	10.7	10.7	10.3	10.5	10.3	10.2
Std. Deviation	0.9	0.9	1.0	1.2	1.0	1.1	0.9	1.0	1.2	1.1	1.3	1.0
% Hgb > 12	4%	7%	5%	12%	4%	6%	6%	6%	5%	5%	6%	1%

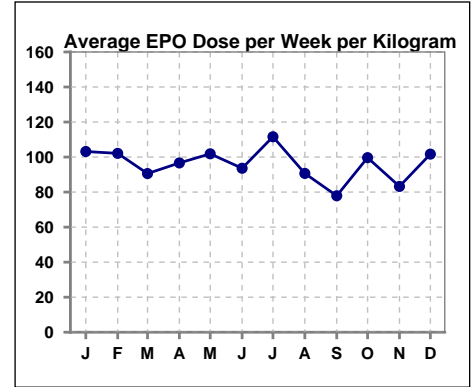
Note: Excludes patients who received no ESA in month.



V. ANEMIA - CONT.

Average EPO Dose per Week per Kilogram

	Jan	Feb	Mar	Apr	May	Jun	Jul	Aug	Sep	Oct	Nov	Dec
# Average EPO	103.2	102.1	90.6	96.6	101.9	93.6	111.6	90.7	77.9	99.7	83.2	101.7

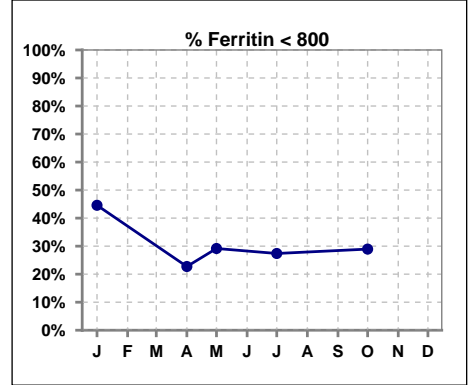


Methodology: a) All labs for 'Adequacy of Dialysis', 'Nutrition', 'Osteodystrophy', 'Anemia' and 'Diabetes' based on last value of month; b) BP's and #L processed are average of all values for month; c) Access data takes last access of month; d) Values for SGA and 'Infection Control' use most recent result.

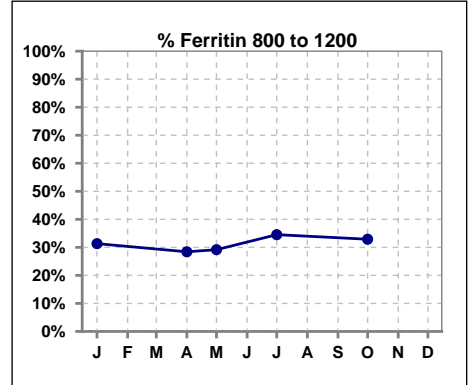
V. ANEMIA - CONT.

Iron Profile

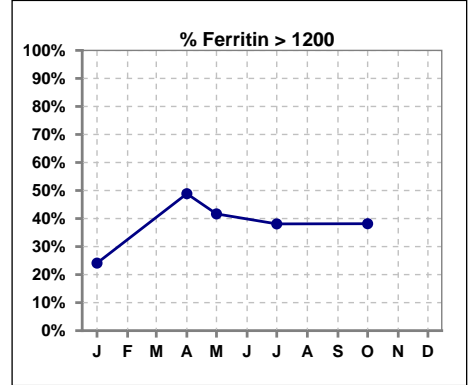
	Jan	Feb	Mar	Apr	May	Jun	Jul	Aug	Sep	Oct	Nov	Dec
# Ferritin	83			88	48		84			76		
# Ferritin < 800	37			20	14		23			22		
Pop. Mean	916			1164	1061		1069			1058		
Std. Deviation	476			530	473		456			388		
% Ferritin < 800	45%			23%	29%		27%			29%		



	Jan	Feb	Mar	Apr	May	Jun	Jul	Aug	Sep	Oct	Nov	Dec
# Ferritin	83			88	48		84			76		
# Ferritin 800 to 1200	26			25	14		29			25		
Pop. Mean	916			1164	1061		1069			1058		
Std. Deviation	476			530	473		456			388		
% Ferritin 800 to 1200	31%			28%	29%		35%			33%		

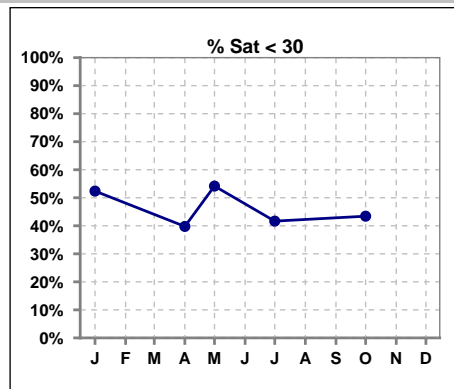


	Jan	Feb	Mar	Apr	May	Jun	Jul	Aug	Sep	Oct	Nov	Dec
# Ferritin	83			88	48		84			76		
# Ferritin > 1200	20			43	20		32			29		
Pop. Mean	916			1164	1061		1069			1058		
Std. Deviation	476			530	473		456			388		
% Ferritin > 1200	24%			49%	42%		38%			38%		

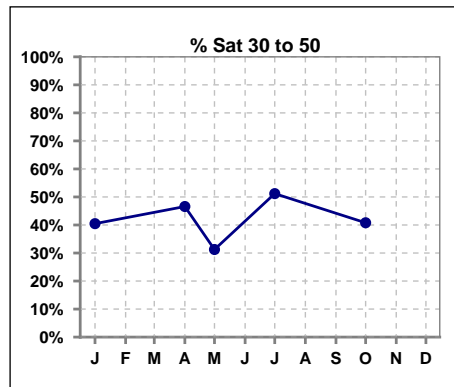


V. ANEMIA - CONT.

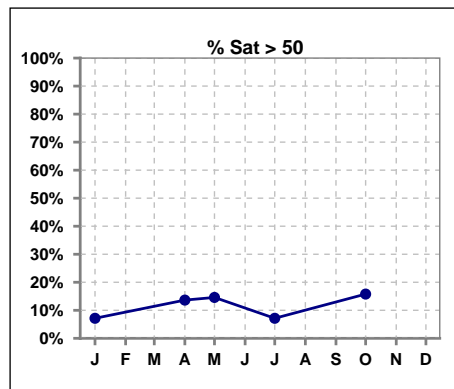
	Jan	Feb	Mar	Apr	May	Jun	Jul	Aug	Sep	Oct	Nov	Dec
# % Sat	84			88	48		84			76		
# % Sat < 30	44			35	26		35			33		
Pop. Mean	32			34	32		34			36		
Std. Deviation	17			13	18		15			20		
%% Sat < 30	52%			40%	54%		42%			43%		



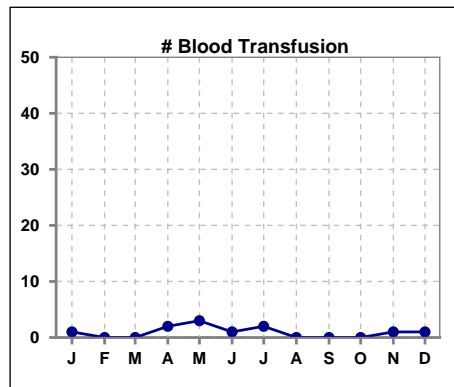
	Jan	Feb	Mar	Apr	May	Jun	Jul	Aug	Sep	Oct	Nov	Dec
# % Sat	84			88	48		84			76		
# % Sat 30 to 50	34			41	15		43			31		
Pop. Mean	32			34	32		34			36		
Std. Deviation	17			13	18		15			20		
%% Sat 30 to 50	40%			47%	31%		51%			41%		



	Jan	Feb	Mar	Apr	May	Jun	Jul	Aug	Sep	Oct	Nov	Dec
# % Sat	84			88	48		84			76		
# % Sat > 50	6			12	7		6			12		
Pop. Mean	32			34	32		34			36		
Std. Deviation	17			13	18		15			20		
%% Sat > 50	7%			14%	15%		7%			16%		



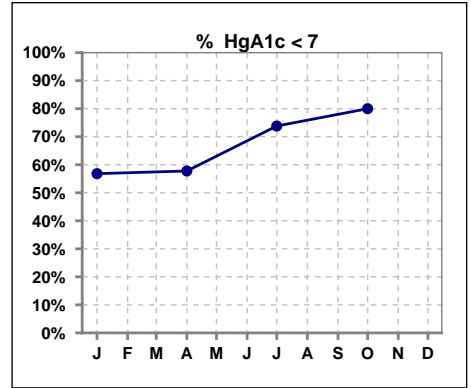
	Jan	Feb	Mar	Apr	May	Jun	Jul	Aug	Sep	Oct	Nov	Dec
# Blood Transfusion	1	0	0	2	3	1	2	0	0	0	1	1



Methodology: a) All labs for 'Adequacy of Dialysis', 'Nutrition', 'Osteodystrophy', 'Anemia' and 'Diabetes' based on last value of month; b) BP's and #L processed are average of all values for month; c) Access data takes last access of month; d) Values for SGA and 'Infection Control' use most recent result.

VI. Diabetes

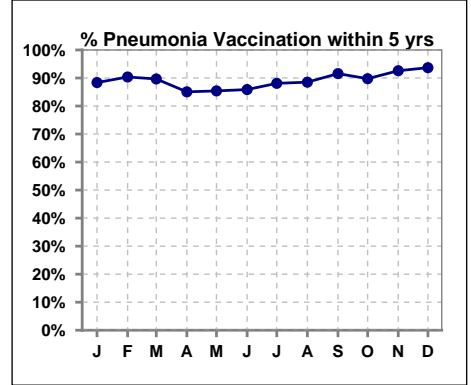
	Jan	Feb	Mar	Apr	May	Jun	Jul	Aug	Sep	Oct	Nov	Dec
# HgA1c	44			45			42			40		
# HgA1c < 7	25			26			31			32		
Pop. Mean	6.8			7.0			6.5			6.1		
Std. Deviation	1.36			1.53			1.31			1.24		
% HgA1c < 7	57%			58%			74%			80%		



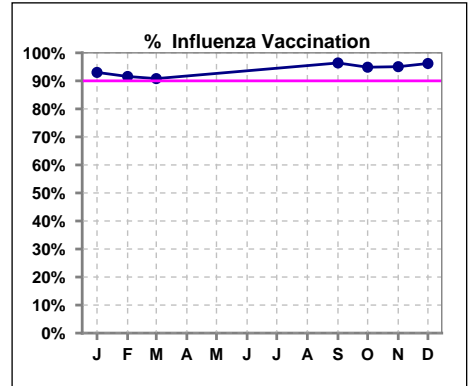
VII. Infection Control

Pneumonia vaccination within the past five years

	Jan	Feb	Mar	Apr	May	Jun	Jul	Aug	Sep	Oct	Nov	Dec
# Patient	86	83	87	87	89	85	84	87	83	78	81	79
# Pneumonia	76	75	78	74	76	73	74	77	76	70	75	74
% Pneumonia	88%	90%	90%	85%	85%	86%	88%	89%	92%	90%	93%	94%



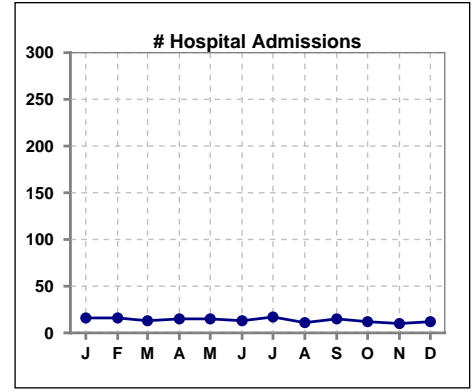
	Jan	Feb	Mar	Apr	May	Jun	Jul	Aug	Sep	Oct	Nov	Dec
# Patient	86	83	87						83	78	81	79
# Influenza	80	76	79						80	74	77	76
% Influenza	93%	92%	91%						96%	95%	95%	96%



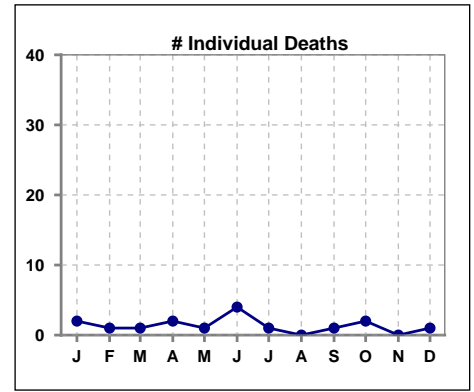
Methodology: a) All labs for 'Adequacy of Dialysis', 'Nutrition', 'Osteodystrophy', 'Anemia' and 'Diabetes' based on last value of month; b) BP's and #L processed are average of all values for month; c) Access data takes last access of month; d) Values for SGA and 'Infection Control' use most recent result.

VIII. Misc

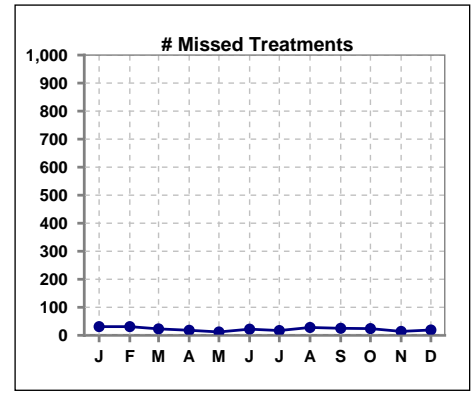
	Jan	Feb	Mar	Apr	May	Jun	Jul	Aug	Sep	Oct	Nov	Dec
# Hospital Admissions	16	16	13	15	15	13	17	11	15	12	10	12



	Jan	Feb	Mar	Apr	May	Jun	Jul	Aug	Sep	Oct	Nov	Dec
# Individual Deaths	2	1	1	2	1	4	1	0	1	2	0	1



	Jan	Feb	Mar	Apr	May	Jun	Jul	Aug	Sep	Oct	Nov	Dec
# Missed Treatments	31	31	23	18	12	22	17	28	25	24	14	19



Methodology: a) All labs for 'Adequacy of Dialysis', 'Nutrition', 'Osteodystrophy', 'Anemia' and 'Diabetes' based on last value of month; b) BP's and #L processed are average of all values for month; c) Access data takes last access of month; d) Values for SGA and 'Infection Control' use most recent result.