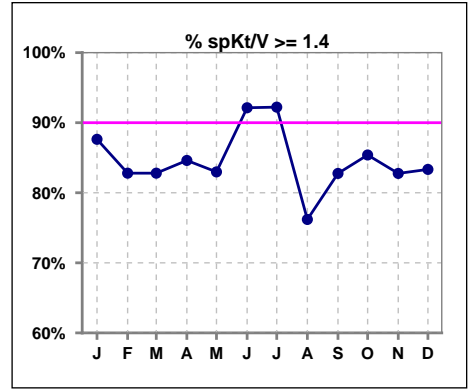
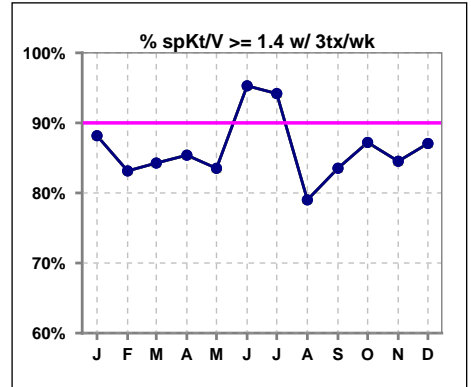


I. ADEQUACY OF DIALYSIS

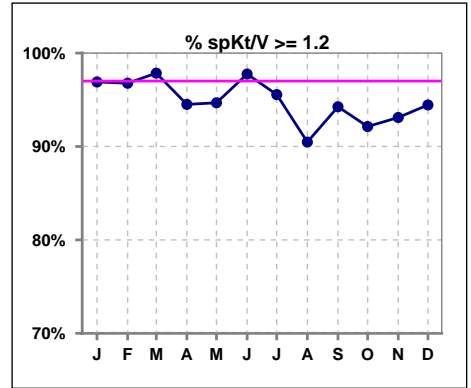
	Jan	Feb	Mar	Apr	May	Jun	Jul	Aug	Sep	Oct	Nov	Dec
# spKt/V	97	93	93	91	94	89	90	84	87	89	87	90
# spKt/V >= 1.4	85	77	77	77	78	82	83	64	72	76	72	75
Pop. Mean	1.64	1.63	1.65	1.62	1.65	1.66	1.68	1.61	1.63	1.62	1.67	1.68
Std. Deviation	0.25	0.26	0.27	0.27	0.28	0.24	0.34	0.32	0.30	0.32	0.34	0.35
% spKt/V >= 1.4	88%	83%	83%	85%	83%	92%	92%	76%	83%	85%	83%	83%



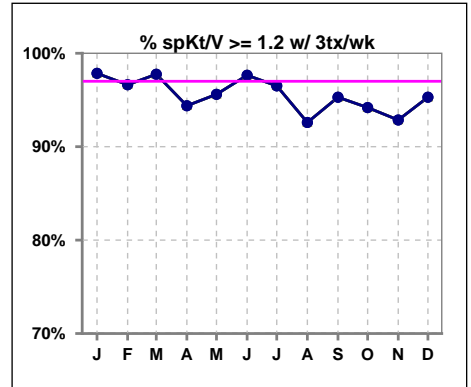
	Jan	Feb	Mar	Apr	May	Jun	Jul	Aug	Sep	Oct	Nov	Dec
# spKt/V w/ 3tx/wk	93	89	89	89	91	85	86	81	85	86	84	85
# spKt/V >= 1.4 w/3tx/wk	82	74	75	76	76	81	81	64	71	75	71	74
Pop. Mean	1.65	1.64	1.66	1.63	1.66	1.67	1.70	1.63	1.64	1.64	1.68	1.70
Std. Deviation	0.25	0.27	0.27	0.27	0.28	0.23	0.33	0.31	0.29	0.30	0.34	0.35
% >= 1.4 w/3tx/wk	88%	83%	84%	85%	84%	95%	94%	79%	84%	87%	85%	87%



	Jan	Feb	Mar	Apr	May	Jun	Jul	Aug	Sep	Oct	Nov	Dec
# spKt/V	97	93	93	91	94	89	90	84	87	89	87	90
# spKt/V >= 1.2	94	90	91	86	89	87	86	76	82	82	81	85
Pop. Mean	1.64	1.63	1.65	1.62	1.65	1.66	1.68	1.61	1.63	1.62	1.67	1.68
Std. Deviation	0.25	0.26	0.27	0.27	0.28	0.24	0.34	0.32	0.30	0.32	0.34	0.35
% spKt/V >= 1.2	97%	97%	98%	95%	95%	98%	96%	90%	94%	92%	93%	94%



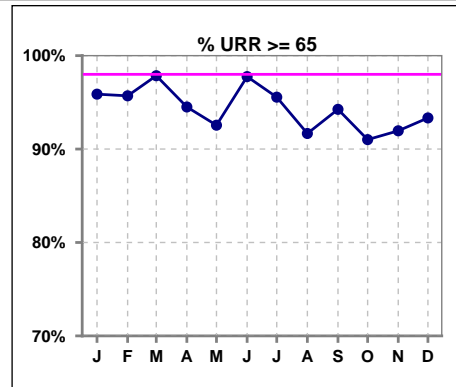
	Jan	Feb	Mar	Apr	May	Jun	Jul	Aug	Sep	Oct	Nov	Dec
# spKt/V w/ 3tx/wk	93	89	89	89	91	85	86	81	85	86	84	85
# spKt/V >= 1.2 w/3tx/wk	91	86	87	84	87	83	83	75	81	81	78	81
Pop. Mean	1.65	1.64	1.66	1.63	1.66	1.67	1.70	1.63	1.64	1.64	1.68	1.70
Std. Deviation	0.25	0.27	0.27	0.27	0.28	0.23	0.33	0.31	0.29	0.30	0.34	0.35
% >= 1.2 w/3tx/wk	98%	97%	98%	94%	96%	98%	97%	93%	95%	94%	93%	95%



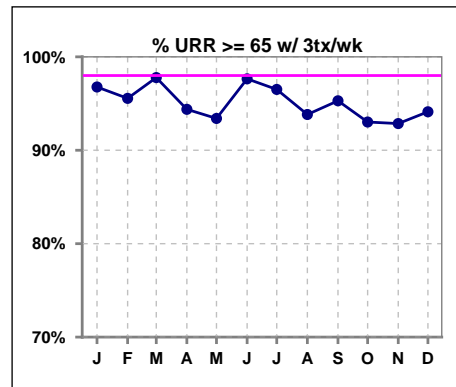
Methodology: a) All labs for 'Adequacy of Dialysis', 'Nutrition', 'Osteodystrophy', 'Anemia' and 'Diabetes' based on last value of month; b) BP's and #L processed are average of all values for month; c) Access data takes last access of month; d) Values for SGA and 'Infection Control' use most recent result.

I. ADEQUACY OF DIALYSIS - CONT.

	Jan	Feb	Mar	Apr	May	Jun	Jul	Aug	Sep	Oct	Nov	Dec
# URR	97	93	93	91	94	89	90	84	87	89	87	90
# URR >= 65	93	89	91	86	87	87	86	77	82	81	80	84
Pop. Mean	75	75	76	75	75	76	76	75	75	75	76	76
Std. Deviation	5.38	5.63	5.90	5.79	5.92	4.71	6.58	7.12	6.59	8.13	7.30	7.92
% URR >= 65	96%	96%	98%	95%	93%	98%	96%	92%	94%	91%	92%	93%



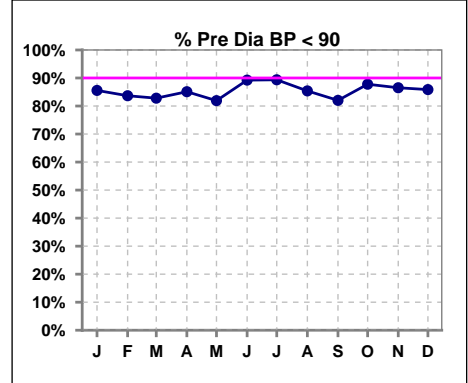
	Jan	Feb	Mar	Apr	May	Jun	Jul	Aug	Sep	Oct	Nov	Dec
# URR w/ 3tx/wk	93	90	90	89	91	85	86	81	85	86	84	85
# URR>=65 w/ 3tx/wk	90	86	88	84	85	83	83	76	81	80	78	80
Pop. Mean	75	75	76	75	75	76	76	75	75	75	76	76
Std. Deviation	5.28	5.63	5.90	5.81	5.86	4.64	5.87	6.80	6.22	7.11	7.29	7.70
% URR>=65 w/ 3tx/wk	97%	96%	98%	94%	93%	98%	97%	94%	95%	93%	93%	94%



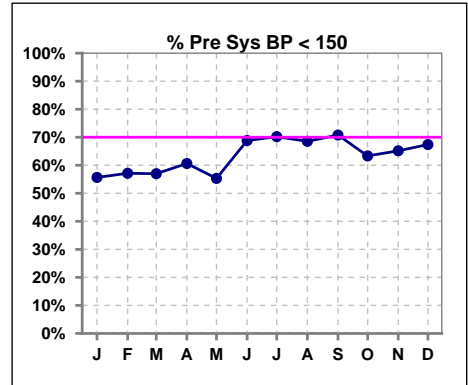
I. ADEQUACY OF DIALYSIS - CONT.

Blood Pressure Control (Pre)

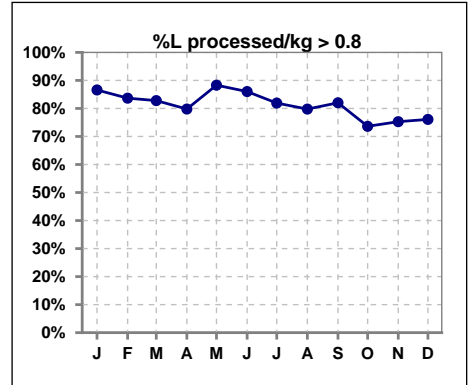
	Jan	Feb	Mar	Apr	May	Jun	Jul	Aug	Sep	Oct	Nov	Dec
# Pre Dia BP	97	98	93	94	94	93	94	89	89	90	89	92
# Pre Dia BP < 90	83	82	77	80	77	83	84	76	73	79	77	79
Pop. Mean	75	76	77	75	76	75	74	74	74	73	74	73
Std. Deviation	13.4	14.2	13.7	14.0	14.0	12.6	13.1	15.1	15.2	14.1	14.0	12.9
% Pre Dia BP < 90	86%	84%	83%	85%	82%	89%	89%	85%	82%	88%	87%	86%



	Jan	Feb	Mar	Apr	May	Jun	Jul	Aug	Sep	Oct	Nov	Dec
# Pre Sys BP	97	98	93	94	94	93	94	89	89	90	89	92
# Pre Sys BP < 150	54	56	53	57	52	64	66	61	63	57	58	62
Pop. Mean	144	146	144	145	146	140	138	138	138	142	141	139
Std. Deviation	21.3	23.1	20.4	20.8	21.4	20.0	20.1	22.1	21.5	21.2	20.9	19.8
%Pre Sys BP <150	56%	57%	57%	61%	55%	69%	70%	69%	71%	63%	65%	67%



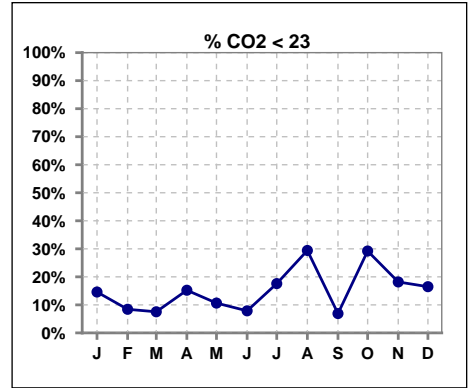
	Jan	Feb	Mar	Apr	May	Jun	Jul	Aug	Sep	Oct	Nov	Dec
# L processed/kg	97	98	93	94	94	93	94	89	89	91	89	92
# L processed/kg>0.8	84	82	77	75	83	80	77	71	73	67	67	70
Pop. Mean	1	1	1	1	1	1	1	1	1	1	1	1
Std. Deviation	0.2	0.2	0.2	0.2	0.2	0.2	0.2	0.2	0.2	0.3	0.3	0.3
% L processed/kg>0.8	87%	84%	83%	80%	88%	86%	82%	80%	82%	74%	75%	76%



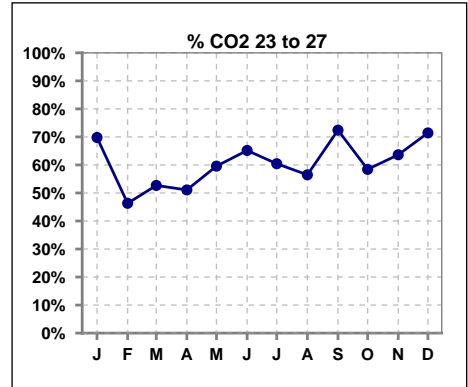
Methodology: a) All labs for 'Adequacy of Dialysis', 'Nutrition', 'Osteodystrophy', 'Anemia' and 'Diabetes' based on last value of month; b) BP's and #L processed are average of all values for month; c) Access data takes last access of month; d) Values for SGA and 'Infection Control' use most recent result.

I. ADEQUACY OF DIALYSIS - CONT.

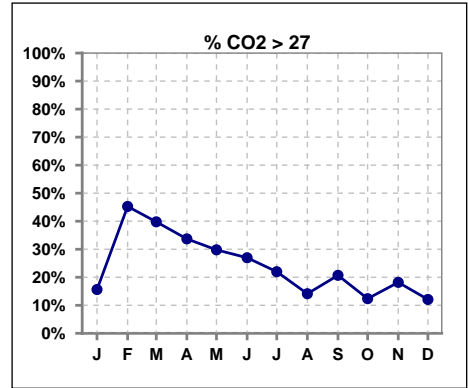
	Jan	Feb	Mar	Apr	May	Jun	Jul	Aug	Sep	Oct	Nov	Dec
# CO2	96	95	93	92	94	89	91	85	87	89	88	91
# CO2 < 23	14	8	7	14	10	7	16	25	6	26	16	15
Pop. Mean	25	27	27	26	26	26	26	24	26	24	25	25
Std. Deviation	2.91	3.46	3.21	2.95	2.90	2.49	3.14	3.00	2.42	3.18	2.54	3.05
% CO2 < 23	15%	8%	8%	15%	11%	8%	18%	29%	7%	29%	18%	16%



	Jan	Feb	Mar	Apr	May	Jun	Jul	Aug	Sep	Oct	Nov	Dec
# CO2	96	95	93	92	94	89	91	85	87	89	88	91
# CO2 23 to 27	67	44	49	47	56	58	55	48	63	52	56	65
Pop. Mean	25	27	27	26	26	26	26	24	26	24	25	25
Std. Deviation	2.91	3.46	3.21	2.95	2.90	2.49	3.14	3.00	2.42	3.18	2.54	3.05
% CO2 23 to 27	70%	46%	53%	51%	60%	65%	60%	56%	72%	58%	64%	71%



	Jan	Feb	Mar	Apr	May	Jun	Jul	Aug	Sep	Oct	Nov	Dec
# CO2	96	95	93	92	94	89	91	85	87	89	88	91
# CO2 > 27	15	43	37	31	28	24	20	12	18	11	16	11
Pop. Mean	25	27	27	26	26	26	26	24	26	24	25	25
Std. Deviation	2.91	3.46	3.21	2.95	2.90	2.49	3.14	3.00	2.42	3.18	2.54	3.05
% CO2 > 27	16%	45%	40%	34%	30%	27%	22%	14%	21%	12%	18%	12%

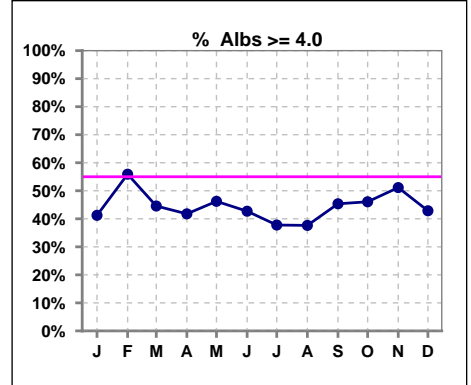


Methodology: a) All labs for 'Adequacy of Dialysis', 'Nutrition', 'Osteodystrophy', 'Anemia' and 'Diabetes' based on last value of month; b) BP's and #L processed are average of all values for month; c) Access data takes last access of month; d) Values for SGA and 'Infection Control' use most recent result.

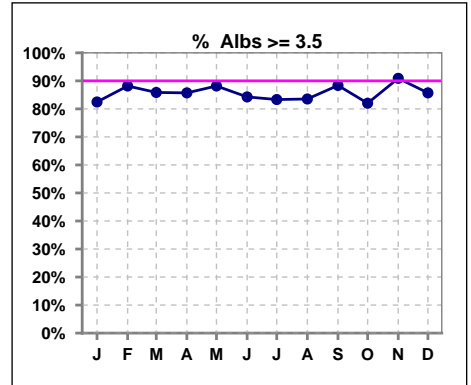
*Albumin values use BCG method - as of July 2001

II. NUTRITION

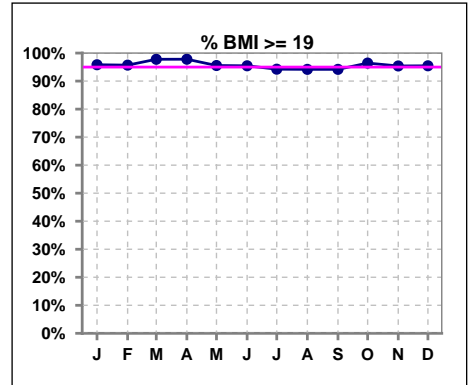
	Jan	Feb	Mar	Apr	May	Jun	Jul	Aug	Sep	Oct	Nov	Dec
# Albumin	97	93	92	91	93	89	90	85	86	89	88	91
# Albumin >= 4.0	40	52	41	38	43	38	34	32	39	41	45	39
Pop. Mean	3.9	4.0	3.9	3.9	3.9	3.9	3.8	3.8	3.9	3.8	3.9	3.8
Std. Deviation	0.45	0.44	0.42	0.43	0.40	0.40	0.39	0.41	0.41	0.43	0.40	0.47
% Alb >= 4.0	41%	56%	45%	42%	46%	43%	38%	38%	45%	46%	51%	43%



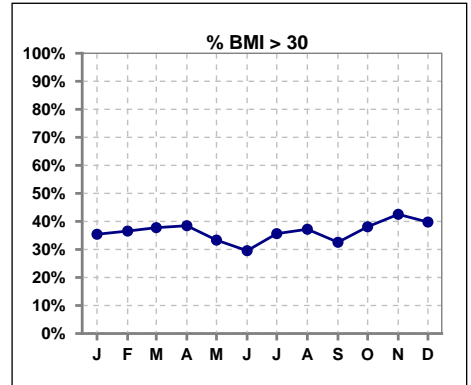
	Jan	Feb	Mar	Apr	May	Jun	Jul	Aug	Sep	Oct	Nov	Dec
# Albumin	97	93	92	91	93	89	90	85	86	89	88	91
# Albumin >= 3.5	80	82	79	78	82	75	75	71	76	73	80	78
Pop. Mean	3.9	4.0	3.9	3.9	3.9	3.9	3.8	3.8	3.9	3.8	3.9	3.8
Std. Deviation	0.45	0.44	0.42	0.43	0.40	0.40	0.39	0.41	0.41	0.43	0.40	0.47
% Alb >= 3.5	82%	88%	86%	86%	88%	84%	83%	84%	88%	82%	91%	86%



	Jan	Feb	Mar	Apr	May	Jun	Jul	Aug	Sep	Oct	Nov	Dec
# BMI	96	93	90	91	90	88	87	86	86	84	87	88
# BMI >= 19	92	89	88	89	86	84	82	81	81	81	83	84
Pop. Mean	29	29	29	29	28	28	28	28	28	29	29	29
Std. Deviation	7.3	7.3	7.3	7.4	7.3	6.9	7.3	7.1	7.2	7.6	8.2	8.5
% BMI >= 19	96%	96%	98%	98%	96%	95%	94%	94%	94%	96%	95%	95%



	Jan	Feb	Mar	Apr	May	Jun	Jul	Aug	Sep	Oct	Nov	Dec
# BMI	96	93	90	91	90	88	87	86	86	84	87	88
# BMI > 30	34	34	34	35	30	26	31	32	28	32	37	35
Pop. Mean	29	29	29	29	28	28	28	28	28	29	29	29
Std. Deviation	7.3	7.3	7.3	7.4	7.3	6.9	7.3	7.1	7.2	7.6	8.2	8.5
% BMI > 30	35%	37%	38%	38%	33%	30%	36%	37%	33%	38%	43%	40%

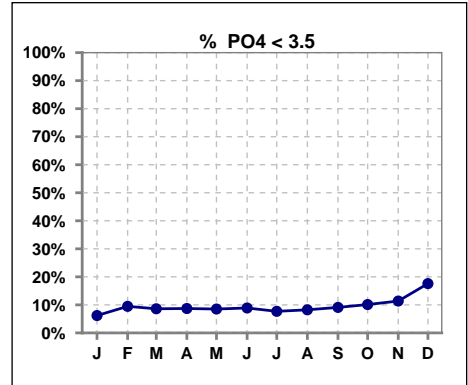


Methodology: a) All labs for 'Adequacy of Dialysis', 'Nutrition', 'Osteodystrophy', 'Anemia' and 'Diabetes' based on last value of month; b) BP's and #L processed are average of all values for month; c) Access data takes last access of month; d) Values for SGA and 'Infection Control' use most recent result.

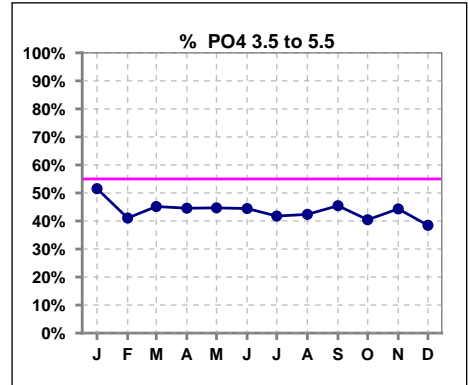
Lab methodology for PTH changed January 2012

III. OSTEODYSTROPHY

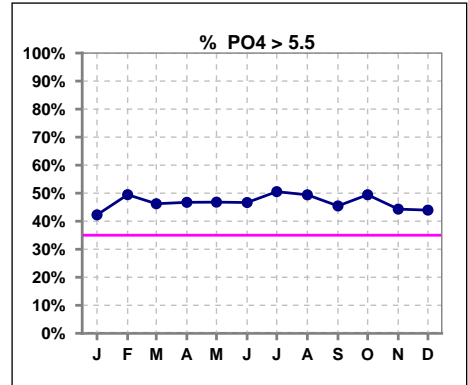
	Jan	Feb	Mar	Apr	May	Jun	Jul	Aug	Sep	Oct	Nov	Dec
# PO4	97	95	93	92	94	90	91	85	88	89	88	91
# PO4 < 3.5	6	9	8	8	8	8	7	7	8	9	10	16
Pop. Mean	5.6	5.5	5.8	5.7	5.6	5.8	5.8	5.9	5.6	6.0	5.6	5.8
Std. Deviation	1.76	1.54	2.00	1.79	1.77	2.04	1.77	2.30	1.98	2.21	2.13	2.49
% PO4 < 3.5	6%	9%	9%	9%	9%	9%	8%	8%	9%	10%	11%	18%



	Jan	Feb	Mar	Apr	May	Jun	Jul	Aug	Sep	Oct	Nov	Dec
# PO4	97	95	93	92	94	90	91	85	88	89	88	91
# PO4 3.5 to 5.5	50	39	42	41	42	40	38	36	40	36	39	35
Pop. Mean	5.6	5.5	5.8	5.7	5.6	5.8	5.8	5.9	5.6	6.0	5.6	5.8
Std. Deviation	1.76	1.54	2.00	1.79	1.77	2.04	1.77	2.30	1.98	2.21	2.13	2.49
% PO4 3.5 to 5.5	52%	41%	45%	45%	45%	44%	42%	42%	45%	40%	44%	38%



	Jan	Feb	Mar	Apr	May	Jun	Jul	Aug	Sep	Oct	Nov	Dec
# PO4	97	95	93	92	94	90	91	85	88	89	88	91
# PO4 > 5.5	41	47	43	43	44	42	46	42	40	44	39	40
Pop. Mean	5.6	5.5	5.8	5.7	5.6	5.8	5.8	5.9	5.6	6.0	5.6	5.8
Std. Deviation	1.76	1.54	2.00	1.79	1.77	2.04	1.77	2.30	1.98	2.21	2.13	2.49
% PO4 > 5.5	42%	49%	46%	47%	47%	47%	51%	49%	45%	49%	44%	44%

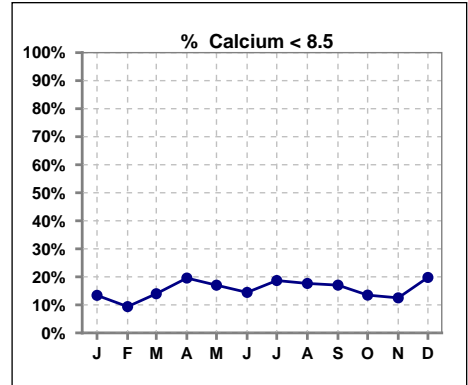


Methodology: a) All labs for 'Adequacy of Dialysis', 'Nutrition', 'Osteodystrophy', 'Anemia' and 'Diabetes' based on last value of month; b) BP's and #L processed are average of all values for month; c) Access data takes last access of month; d) Values for SGA and 'Infection Control' use most recent result.

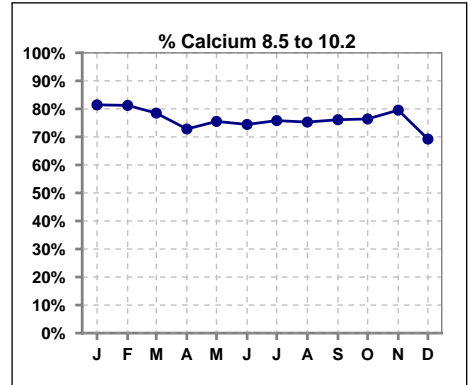
Lab methodology for PTH changed January 2012

III. OSTEODYSTROPHY - CONT.

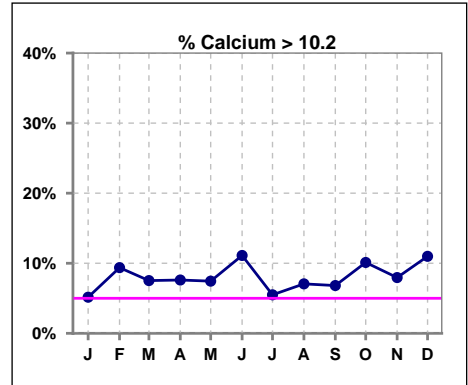
	Jan	Feb	Mar	Apr	May	Jun	Jul	Aug	Sep	Oct	Nov	Dec
# Calcium	97	96	93	92	94	90	91	85	88	89	88	91
# Calcium < 8.5	13	9	13	18	16	13	17	15	15	12	11	18
Pop. Mean	9.1	9.3	9.2	9.1	9.2	9.2	9.1	9.1	9.1	9.1	9.3	9.2
Std. Deviation	0.67	0.82	0.83	0.89	0.81	0.86	0.80	0.87	0.92	0.88	0.84	0.92
% Calcium < 8.5	13%	9%	14%	20%	17%	14%	19%	18%	17%	13%	13%	20%



	Jan	Feb	Mar	Apr	May	Jun	Jul	Aug	Sep	Oct	Nov	Dec
# Calcium	97	96	93	92	94	90	91	85	88	89	88	91
# Calcium 8.5 to 10.2	79	78	73	67	71	67	69	64	67	68	70	63
Pop. Mean	9.1	9.3	9.2	9.1	9.2	9.2	9.1	9.1	9.1	9.1	9.3	9.2
Std. Deviation	0.67	0.82	0.83	0.89	0.81	0.86	0.80	0.87	0.92	0.88	0.84	0.92
% Calcium 8.5 to 10.2	81%	81%	78%	73%	76%	74%	76%	75%	76%	76%	80%	69%



	Jan	Feb	Mar	Apr	May	Jun	Jul	Aug	Sep	Oct	Nov	Dec
# Calcium	97	96	93	92	94	90	91	85	88	89	88	91
# Calcium > 10.2	5	9	7	7	7	10	5	6	6	9	7	10
Pop. Mean	9.1	9.3	9.2	9.1	9.2	9.2	9.1	9.1	9.1	9.1	9.3	9.2
Std. Deviation	0.67	0.82	0.83	0.89	0.81	0.86	0.80	0.87	0.92	0.88	0.84	0.92
% Calcium > 10.2	5%	9%	8%	8%	7%	11%	5%	7%	7%	10%	8%	11%

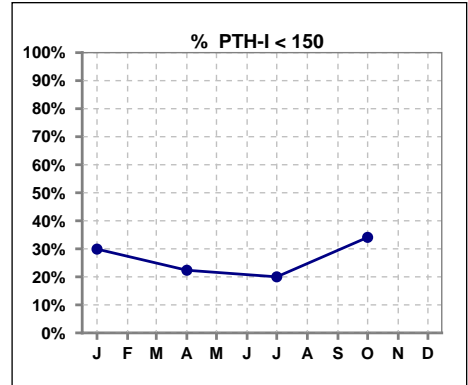


Methodology: a) All labs for 'Adequacy of Dialysis', 'Nutrition', 'Osteodystrophy', 'Anemia' and 'Diabetes' based on last value of month; b) BP's and #L processed are average of all values for month; c) Access data takes last access of month; d) Values for SGA and 'Infection Control' use most recent result.

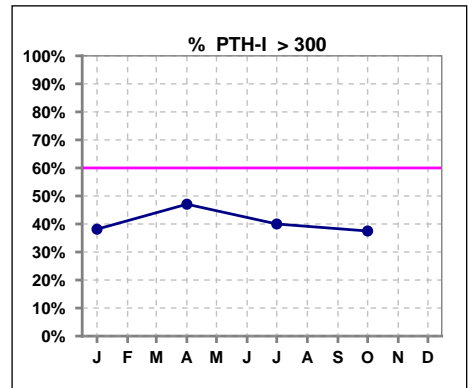
Lab methodology for PTH changed January 2012

III. OSTEODYSTROPHY - CONT.

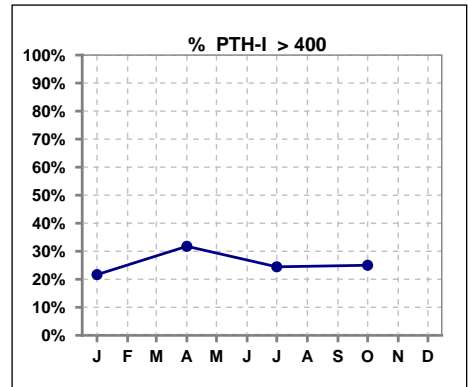
	Jan	Feb	Mar	Apr	May	Jun	Jul	Aug	Sep	Oct	Nov	Dec
# PTH-I	97			85			90			88		
# PTH-I < 150	29			19			18			30		
Pop. Mean	334			382			376			340		
Std. Deviation	332			391			404			366		
% PTH-I < 150	30%			22%			20%			34%		



	Jan	Feb	Mar	Apr	May	Jun	Jul	Aug	Sep	Oct	Nov	Dec
# PTH-I	97			85			90			88		
# PTH-I > 300	37			40			36			33		
Pop. Mean	334			382			376			340		
Std. Deviation	332			391			404			366		
% PTH-I > 300	38%			47%			40%			38%		



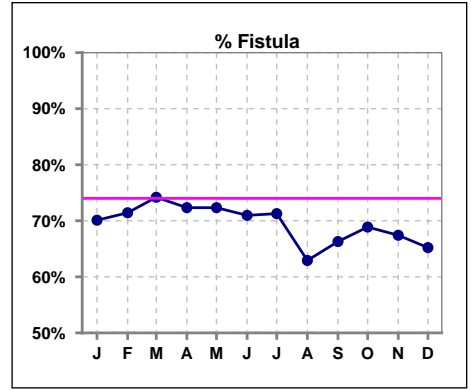
	Jan	Feb	Mar	Apr	May	Jun	Jul	Aug	Sep	Oct	Nov	Dec
# PTH-I	97			85			90			88		
# PTH-I > 400	21			27			22			22		
Pop. Mean	334			382			376			340		
Std. Deviation	332			391			404			366		
% PTH-I > 400	22%			32%			24%			25%		



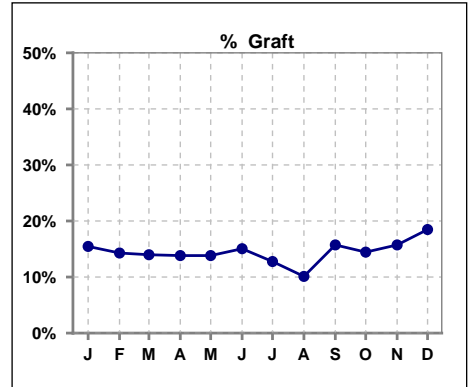
Methodology: a) All labs for 'Adequacy of Dialysis', 'Nutrition', 'Osteodystrophy', 'Anemia' and 'Diabetes' based on last value of month; b) BP's and #L processed are average of all values for month; c) Access data takes last access of month; d) Values for SGA and 'Infection Control' use most recent result.

IV. ACCESS

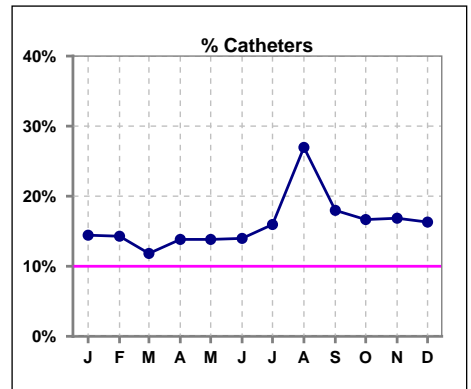
	Jan	Feb	Mar	Apr	May	Jun	Jul	Aug	Sep	Oct	Nov	Dec
# Access	97	98	93	94	94	93	94	89	89	90	89	92
# Fistula	68	70	69	68	68	66	67	56	59	62	60	60
% Fistula	70%	71%	74%	72%	72%	71%	71%	63%	66%	69%	67%	65%



	Jan	Feb	Mar	Apr	May	Jun	Jul	Aug	Sep	Oct	Nov	Dec
# Access	97	98	93	94	94	93	94	89	89	90	89	92
# Graft	15	14	13	13	13	14	12	9	14	13	14	17
% Graft	15%	14%	14%	14%	14%	15%	13%	10%	16%	14%	16%	18%



	Jan	Feb	Mar	Apr	May	Jun	Jul	Aug	Sep	Oct	Nov	Dec
# Access	97	98	93	94	94	93	94	89	89	90	89	92
# Catheters	14	14	11	13	13	13	15	24	16	15	15	15
% Catheters	14%	14%	12%	14%	14%	14%	16%	27%	18%	17%	17%	16%



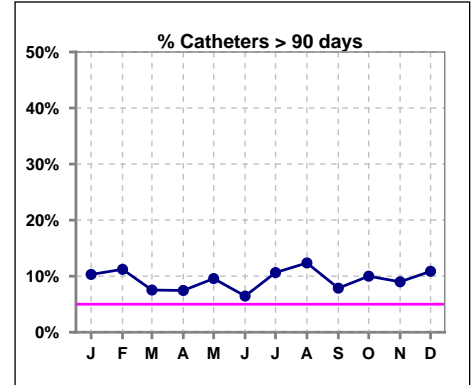
Methodology: a) All labs for 'Adequacy of Dialysis', 'Nutrition', 'Osteodystrophy', 'Anemia' and 'Diabetes' based on last value of month; b) BP's and #L processed are average of all values for month; c) Access data takes last access of month; d) Values for SGA and 'Infection Control' use most recent result.

IV. ACCESS - CONT.

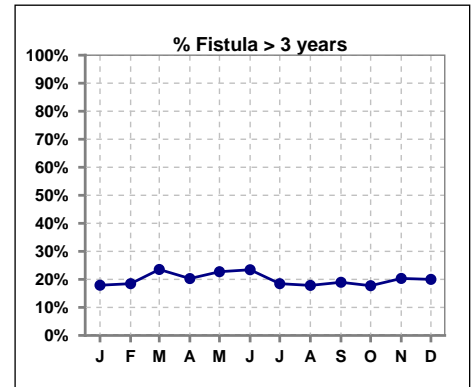
Catheters > 90 days

	Jan	Feb	Mar	Apr	May	Jun	Jul	Aug	Sep	Oct	Nov	Dec
# Access	97	98	93	94	94	93	94	89	89	90	89	92
# Catheters	10	11	7	7	9	6	10	11	7	9	8	10
% Catheters	10%	11%	8%	7%	10%	6%	11%	12%	8%	10%	9%	11%

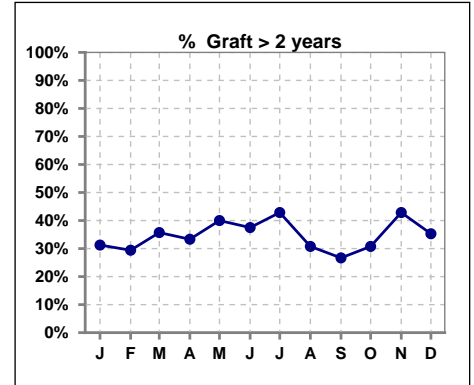
Definition: Catheter in use on last treatment of the month



	Jan	Feb	Mar	Apr	May	Jun	Jul	Aug	Sep	Oct	Nov	Dec
# Fistula	67	65	68	69	66	64	65	56	58	62	59	60
# Fistula > 3 yrs	12	12	16	14	15	15	12	10	11	11	12	12
% Fistula > 3 yrs	18%	18%	24%	20%	23%	23%	18%	18%	19%	18%	20%	20%



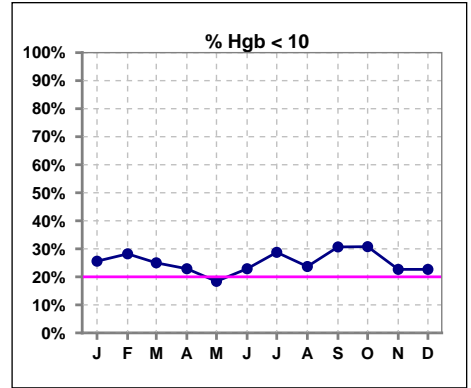
	Jan	Feb	Mar	Apr	May	Jun	Jul	Aug	Sep	Oct	Nov	Dec
# Graft	16	17	14	15	15	16	14	13	15	13	14	17
# Graft > 2 yrs	5	5	5	5	6	6	6	4	4	4	6	6
% Graft > 2 yrs	31%	29%	36%	33%	40%	38%	43%	31%	27%	31%	43%	35%



V. ANEMIA

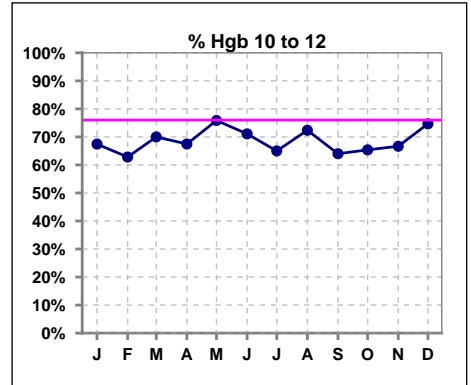
	Jan	Feb	Mar	Apr	May	Jun	Jul	Aug	Sep	Oct	Nov	Dec
# Hgb	86	78	80	83	87	83	80	76	75	78	75	75
# Hgb < 10	22	22	20	19	16	19	23	18	23	24	17	17
Pop. Mean	10.6	10.6	10.6	10.7	10.7	10.6	10.6	10.5	10.4	10.4	10.6	10.5
Std. Deviation	1.1	1.0	1.0	1.1	1.0	1.0	1.0	1.0	1.1	1.2	1.1	1.0
% Hgb < 10	26%	28%	25%	23%	18%	23%	29%	24%	31%	31%	23%	23%

Note: Excludes patients who received no ESA in month.



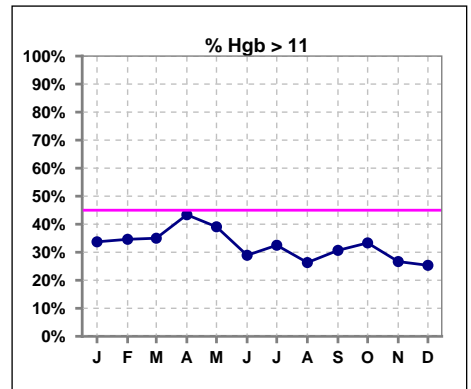
	Jan	Feb	Mar	Apr	May	Jun	Jul	Aug	Sep	Oct	Nov	Dec
# Hgb	86	78	80	83	87	83	80	76	75	78	75	75
# Hgb 10 to 12	58	49	56	56	66	59	52	55	48	51	50	56
Pop. Mean	10.6	10.6	10.6	10.7	10.7	10.6	10.6	10.5	10.4	10.4	10.6	10.5
Std. Deviation	1.1	1.0	1.0	1.1	1.0	1.0	1.0	1.0	1.1	1.2	1.1	1.0
% Hgb 10 to 12	67%	63%	70%	67%	76%	71%	65%	72%	64%	65%	67%	75%

Note: Excludes patients who received no ESA in month.



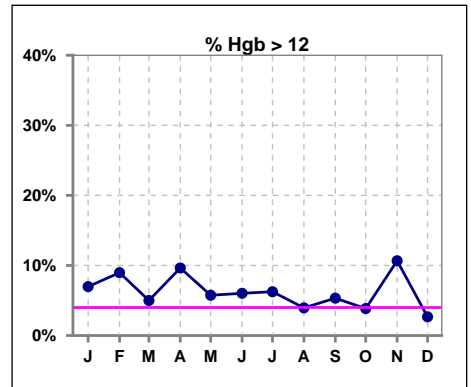
	Jan	Feb	Mar	Apr	May	Jun	Jul	Aug	Sep	Oct	Nov	Dec
# Hgb	86	78	80	83	87	83	80	76	75	78	75	75
# Hgb > 11	29	27	28	36	34	24	26	20	23	26	20	19
Pop. Mean	10.6	10.6	10.6	10.7	10.7	10.6	10.6	10.5	10.4	10.4	10.6	10.5
Std. Deviation	1.1	1.0	1.0	1.1	1.0	1.0	1.0	1.0	1.1	1.2	1.1	1.0
% Hgb > 11	34%	35%	35%	43%	39%	29%	33%	26%	31%	33%	27%	25%

Note: Excludes patients who received no ESA in month.



	Jan	Feb	Mar	Apr	May	Jun	Jul	Aug	Sep	Oct	Nov	Dec
# Hgb	86	78	80	83	87	83	80	76	75	78	75	75
# Hgb > 12	6	7	4	8	5	5	5	3	4	3	8	2
Pop. Mean	10.6	10.6	10.6	10.7	10.7	10.6	10.6	10.5	10.4	10.4	10.6	10.5
Std. Deviation	1.1	1.0	1.0	1.1	1.0	1.0	1.0	1.0	1.1	1.2	1.1	1.0
% Hgb > 12	7%	9%	5%	10%	6%	6%	6%	4%	5%	4%	11%	3%

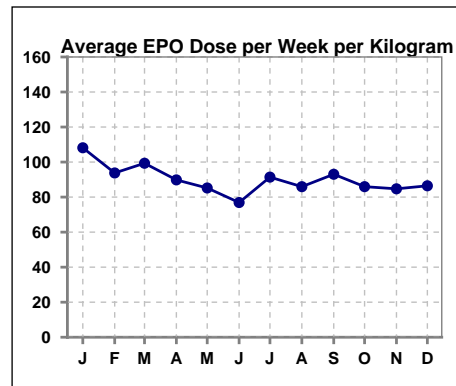
Note: Excludes patients who received no ESA in month.



V. ANEMIA - CONT.

Average EPO Dose per Week per Kilogram

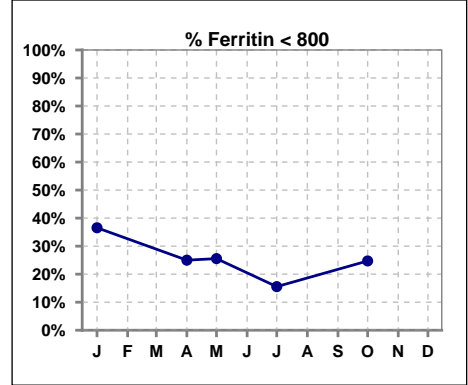
	Jan	Feb	Mar	Apr	May	Jun	Jul	Aug	Sep	Oct	Nov	Dec
# Average EPO	108.2	93.8	99.3	89.8	85.2	76.9	91.4	85.9	93.0	86.0	84.7	86.4



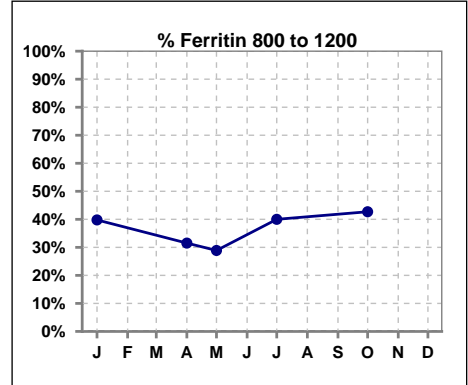
V. ANEMIA - CONT.

Iron Profile

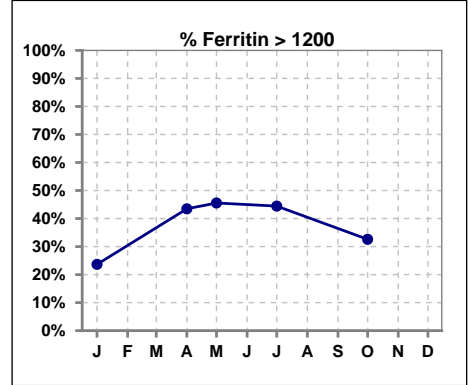
	Jan	Feb	Mar	Apr	May	Jun	Jul	Aug	Sep	Oct	Nov	Dec
# Ferritin	93			92	90		90			89		
# Ferritin < 800	34			23	23		14			22		
Pop. Mean	962			1166	1146		1178			1034		
Std. Deviation	532			538	493		515			413		
% Ferritin < 800	37%			25%	26%		16%			25%		



	Jan	Feb	Mar	Apr	May	Jun	Jul	Aug	Sep	Oct	Nov	Dec
# Ferritin	93			92	90		90			89		
# Ferritin 800 to 1200	37			29	26		36			38		
Pop. Mean	962			1166	1146		1178			1034		
Std. Deviation	532			538	493		515			413		
% Ferritin 800 to 1200	40%			32%	29%		40%			43%		

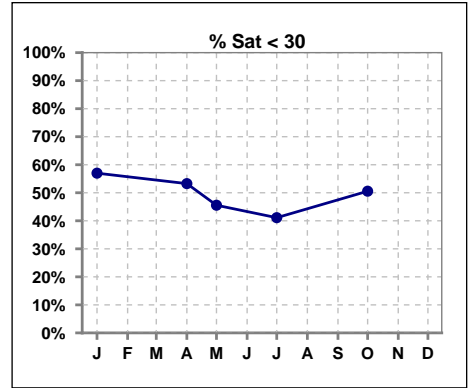


	Jan	Feb	Mar	Apr	May	Jun	Jul	Aug	Sep	Oct	Nov	Dec
# Ferritin	93			92	90		90			89		
# Ferritin > 1200	22			40	41		40			29		
Pop. Mean	962			1166	1146		1178			1034		
Std. Deviation	532			538	493		515			413		
% Ferritin > 1200	24%			43%	46%		44%			33%		

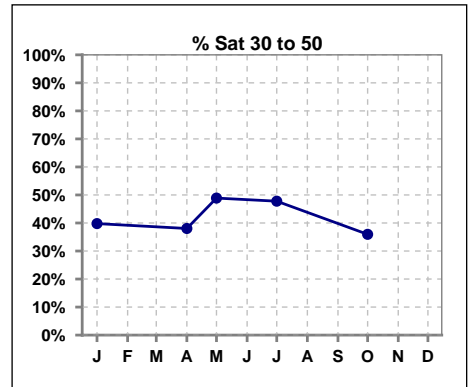


V. ANEMIA - CONT.

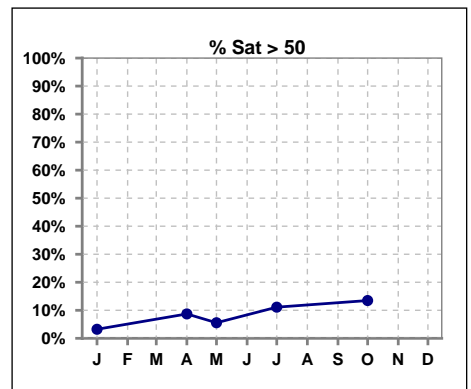
	Jan	Feb	Mar	Apr	May	Jun	Jul	Aug	Sep	Oct	Nov	Dec
# % Sat	93			92	90		90			89		
# % Sat < 30	53			49	41		37			45		
Pop. Mean	31			32	31		35			32		
Std. Deviation	11			14	12		17			17		
% % Sat < 30	57%			53%	46%		41%			51%		



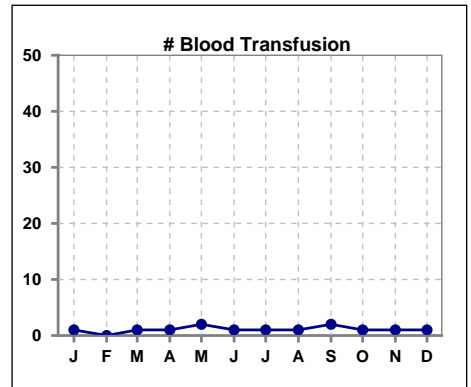
	Jan	Feb	Mar	Apr	May	Jun	Jul	Aug	Sep	Oct	Nov	Dec
# % Sat	93			92	90		90			89		
# % Sat 30 to 50	37			35	44		43			32		
Pop. Mean	31			32	31		35			32		
Std. Deviation	11			14	12		17			17		
% % Sat 30 to 50	40%			38%	49%		48%			36%		



	Jan	Feb	Mar	Apr	May	Jun	Jul	Aug	Sep	Oct	Nov	Dec
# % Sat	93			92	90		90			89		
# % Sat > 50	3			8	5		10			12		
Pop. Mean	31			32	31		35			32		
Std. Deviation	11			14	12		17			17		
% % Sat > 50	3%			9%	6%		11%			13%		



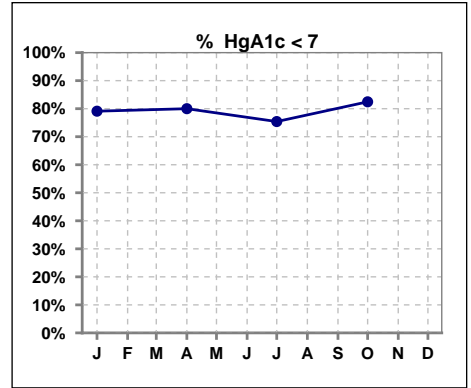
	Jan	Feb	Mar	Apr	May	Jun	Jul	Aug	Sep	Oct	Nov	Dec
# Blood Transfusion	1	0	1	1	2	1	1	1	2	1	1	1



Methodology: a) All labs for 'Adequacy of Dialysis', 'Nutrition', 'Osteodystrophy', 'Anemia' and 'Diabetes' based on last value of month; b) BP's and #L processed are average of all values for month; c) Access data takes last access of month; d) Values for SGA and 'Infection Control' use most recent result.

VI. Diabetes

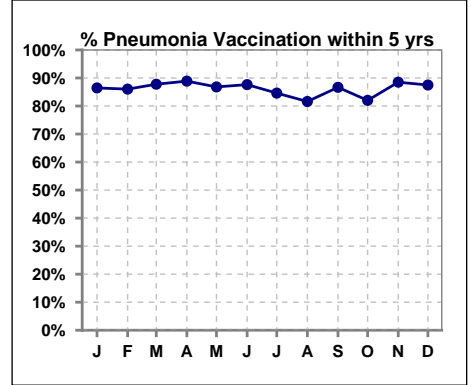
	Jan	Feb	Mar	Apr	May	Jun	Jul	Aug	Sep	Oct	Nov	Dec
# HgA1c	67			60			61			57		
# HgA1c < 7	53			48			46			47		
Pop. Mean	6.3			6.3			6.4			6.1		
Std. Deviation	1.41			1.62			1.50			1.14		
% HgA1c < 7	79%			80%			75%			82%		



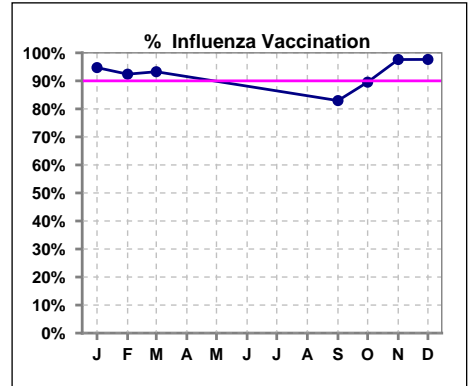
VII. Infection Control

Pneumonia vaccination within the past five years

	Jan	Feb	Mar	Apr	May	Jun	Jul	Aug	Sep	Oct	Nov	Dec
# Patient	96	93	90	90	91	89	91	87	90	89	87	88
# Pneumonia	83	80	79	80	79	78	77	71	78	73	77	77
% Pneumonia	86%	86%	88%	89%	87%	88%	85%	82%	87%	82%	89%	88%



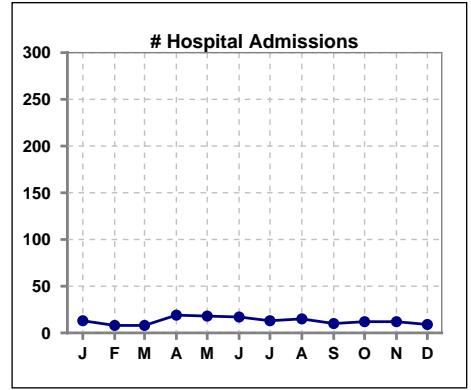
	Jan	Feb	Mar	Apr	May	Jun	Jul	Aug	Sep	Oct	Nov	Dec
# Patient	95	92	89						88	86	84	85
# Influenza	90	85	83						73	77	82	83
% Influenza	95%	92%	93%						83%	90%	98%	98%



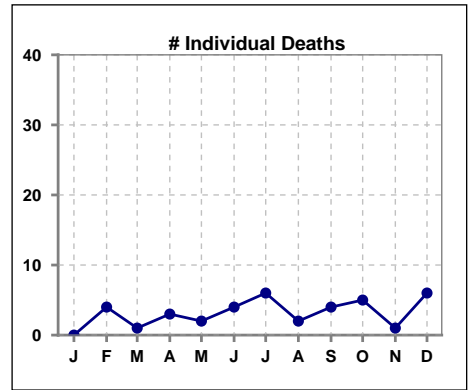
Methodology: a) All labs for 'Adequacy of Dialysis', 'Nutrition', 'Osteodystrophy', 'Anemia' and 'Diabetes' based on last value of month; b) BP's and #L processed are average of all values for month; c) Access data takes last access of month; d) Values for SGA and 'Infection Control' use most recent result.

VIII. Misc

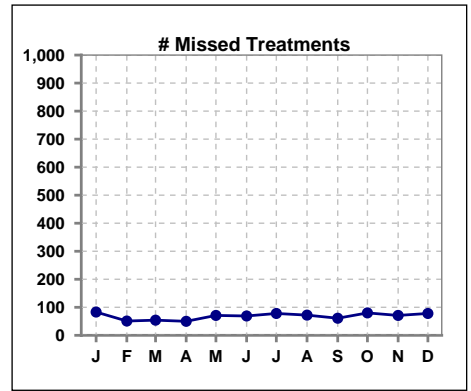
	Jan	Feb	Mar	Apr	May	Jun	Jul	Aug	Sep	Oct	Nov	Dec
# Hospital Admissions	13	8	8	19	18	17	13	15	10	12	12	9



	Jan	Feb	Mar	Apr	May	Jun	Jul	Aug	Sep	Oct	Nov	Dec
# Individual Deaths	0	4	1	3	2	4	6	2	4	5	1	6



	Jan	Feb	Mar	Apr	May	Jun	Jul	Aug	Sep	Oct	Nov	Dec
# Missed Treatments	83	51	54	50	71	69	78	72	61	80	71	78



Methodology: a) All labs for 'Adequacy of Dialysis', 'Nutrition', 'Osteodystrophy', 'Anemia' and 'Diabetes' based on last value of month; b) BP's and #L processed are average of all values for month; c) Access data takes last access of month; d) Values for SGA and 'Infection Control' use most recent result.