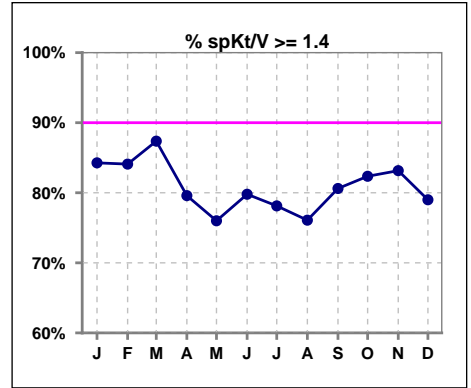
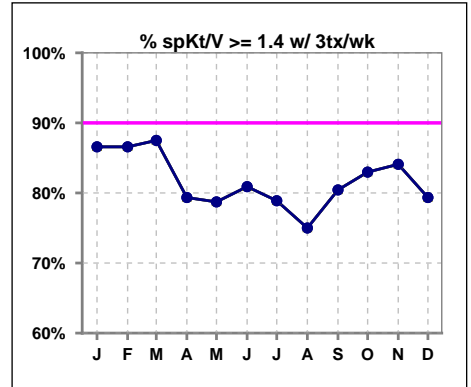


**I. ADEQUACY OF DIALYSIS**

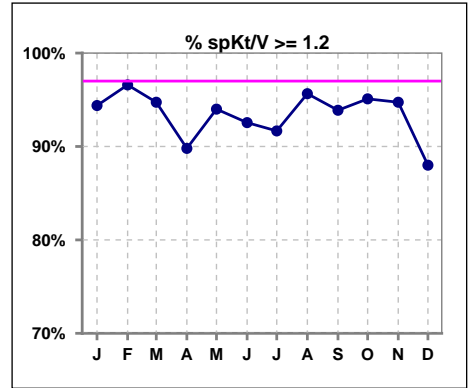
	Jan	Feb	Mar	Apr	May	Jun	Jul	Aug	Sep	Oct	Nov	Dec
# spKt/V	89	88	95	98	100	94	96	92	98	102	95	100
# spKt/V >= 1.4	75	74	83	78	76	75	75	70	79	84	79	79
Pop. Mean	1.65	1.67	1.65	1.60	1.62	1.60	1.60	1.61	1.62	1.63	1.68	1.69
Std. Deviation	0.27	0.28	0.27	0.31	0.31	0.32	0.30	0.30	0.31	0.31	0.31	0.64
% spKt/V >= 1.4	84%	84%	87%	80%	76%	80%	78%	76%	81%	82%	83%	79%



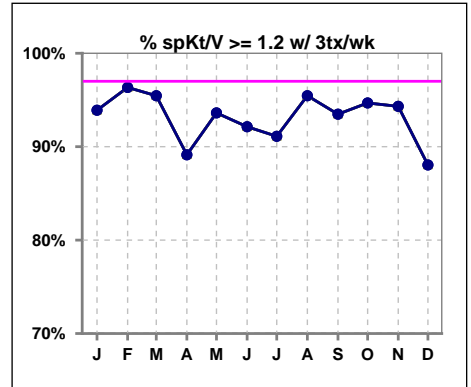
	Jan	Feb	Mar	Apr	May	Jun	Jul	Aug	Sep	Oct	Nov	Dec
# spKt/V w/ 3tx/wk	82	82	88	92	94	89	90	88	92	94	88	92
# spKt/V >= 1.4 w/3tx/wk	71	71	77	73	74	72	71	66	74	78	74	73
Pop. Mean	1.67	1.69	1.66	1.61	1.64	1.61	1.60	1.61	1.63	1.64	1.69	1.70
Std. Deviation	0.27	0.28	0.28	0.32	0.32	0.32	0.31	0.30	0.32	0.31	0.32	0.67
% >= 1.4 w/3tx/wk	87%	87%	88%	79%	79%	81%	79%	75%	80%	83%	84%	79%



	Jan	Feb	Mar	Apr	May	Jun	Jul	Aug	Sep	Oct	Nov	Dec
# spKt/V	89	88	95	98	100	94	96	92	98	102	95	100
# spKt/V >= 1.2	84	85	90	88	94	87	88	88	92	97	90	88
Pop. Mean	1.65	1.67	1.65	1.60	1.62	1.60	1.60	1.61	1.62	1.63	1.68	1.69
Std. Deviation	0.27	0.28	0.27	0.31	0.31	0.32	0.30	0.30	0.31	0.31	0.31	0.64
% spKt/V >= 1.2	94%	97%	95%	90%	94%	93%	92%	96%	94%	95%	95%	88%



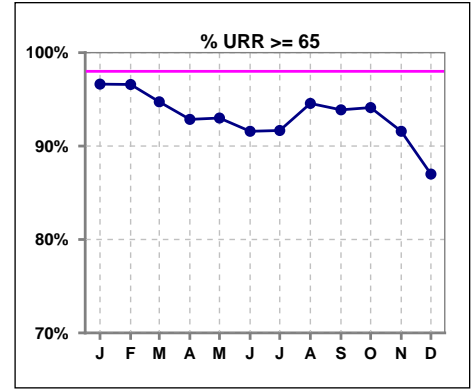
	Jan	Feb	Mar	Apr	May	Jun	Jul	Aug	Sep	Oct	Nov	Dec
# spKt/V w/ 3tx/wk	82	82	88	92	94	89	90	88	92	94	88	92
# spKt/V >= 1.2 w/3tx/wk	77	79	84	82	88	82	82	84	86	89	83	81
Pop. Mean	1.67	1.69	1.66	1.61	1.64	1.61	1.60	1.61	1.63	1.64	1.69	1.70
Std. Deviation	0.27	0.28	0.28	0.32	0.32	0.32	0.31	0.30	0.32	0.31	0.32	0.67
% >= 1.2 w/3tx/wk	94%	96%	95%	89%	94%	92%	91%	95%	93%	95%	94%	88%



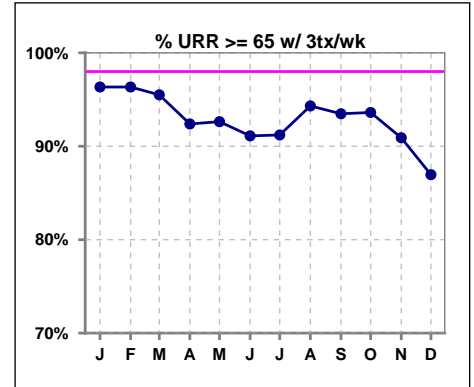
Methodology: a) All labs for 'Adequacy of Dialysis', 'Nutrition', 'Osteodystrophy', 'Anemia' and 'Diabetes' based on last value of month; b) BP's and #L processed are average of all values for month; c) Access data takes last access of month; d) Values for SGA and 'Infection Control' use most recent result.

**I. ADEQUACY OF DIALYSIS - CONT.**

	Jan	Feb	Mar	Apr	May	Jun	Jul	Aug	Sep	Oct	Nov	Dec
# URR	89	88	95	98	100	95	96	92	98	102	95	100
# URR >= 65	86	85	90	91	93	87	88	87	92	96	87	87
Pop. Mean	75	76	75	74	75	74	74	74	74	74	75	74
Std. Deviation	5.45	5.62	5.75	6.77	6.91	7.03	7.08	6.59	6.42	7.10	6.58	7.90
% URR >= 65	97%	97%	95%	93%	93%	92%	92%	95%	94%	94%	92%	87%



	Jan	Feb	Mar	Apr	May	Jun	Jul	Aug	Sep	Oct	Nov	Dec
# URR w/ 3tx/wk	82	82	89	92	95	90	91	88	92	94	88	92
# URR>=65 w/ 3tx/wk	79	79	85	85	88	82	83	83	86	88	80	80
Pop. Mean	76	76	75	74	75	74	74	74	74	75	76	74
Std. Deviation	5.42	5.60	5.79	6.94	6.99	7.16	7.22	6.72	6.58	7.26	6.65	8.02
% URR>=65 w/ 3tx/wk	96%	96%	96%	92%	93%	91%	91%	94%	93%	94%	91%	87%

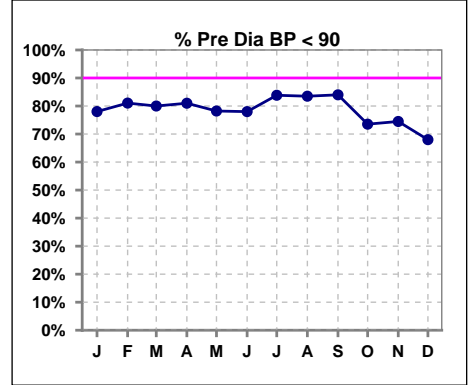


Methodology: a) All labs for 'Adequacy of Dialysis', 'Nutrition', 'Osteodystrophy', 'Anemia' and 'Diabetes' based on last value of month; b) BP's and #L processed are average of all values for month; c) Access data takes last access of month; d) Values for SGA and 'Infection Control' use most recent result.

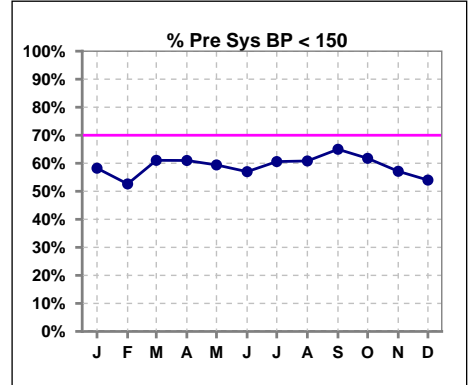
**I. ADEQUACY OF DIALYSIS - CONT.**

**Blood Pressure Control (Pre)**

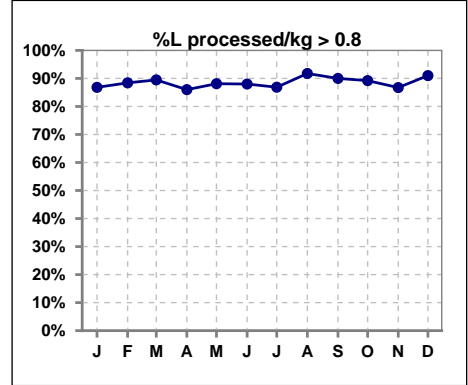
	Jan	Feb	Mar	Apr	May	Jun	Jul	Aug	Sep	Oct	Nov	Dec
# Pre Dia BP	91	95	95	100	101	100	99	97	100	102	98	100
# Pre Dia BP < 90	71	77	76	81	79	78	83	81	84	75	73	68
Pop. Mean	79	78	78	77	79	79	78	77	77	81	82	84
Std. Deviation	15.5	16.3	14.4	15.3	15.1	14.4	14.4	13.6	13.3	13.7	14.3	15.1
<b>% Pre Dia BP &lt; 90</b>	<b>78%</b>	<b>81%</b>	<b>80%</b>	<b>81%</b>	<b>78%</b>	<b>78%</b>	<b>84%</b>	<b>84%</b>	<b>84%</b>	<b>74%</b>	<b>74%</b>	<b>68%</b>



	Jan	Feb	Mar	Apr	May	Jun	Jul	Aug	Sep	Oct	Nov	Dec
# Pre Sys BP	91	95	95	100	101	100	99	97	100	102	98	100
# Pre Sys BP < 150	53	50	58	61	60	57	60	59	65	63	56	54
Pop. Mean	148	148	147	145	147	148	146	144	144	146	147	148
Std. Deviation	22.1	24.2	22.6	21.9	21.6	20.6	18.8	19.0	18.9	19.2	19.6	20.3
<b>%Pre Sys BP &lt;150</b>	<b>58%</b>	<b>53%</b>	<b>61%</b>	<b>61%</b>	<b>59%</b>	<b>57%</b>	<b>61%</b>	<b>61%</b>	<b>65%</b>	<b>62%</b>	<b>57%</b>	<b>54%</b>



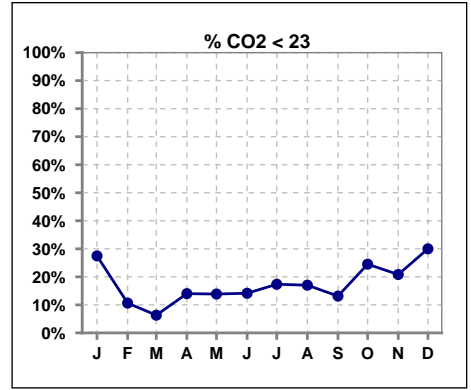
	Jan	Feb	Mar	Apr	May	Jun	Jul	Aug	Sep	Oct	Nov	Dec
# L processed/kg	91	95	95	100	101	100	99	97	100	102	98	100
# L processed/kg>0.8	79	84	85	86	89	88	86	89	90	91	85	91
Pop. Mean	1	1	1	1	1	1	1	1	1	1	1	1
Std. Deviation	0.3	0.2	0.3	0.3	0.3	0.3	0.2	0.3	0.3	0.2	0.3	0.3
<b>% L processed/kg&gt;0.8</b>	<b>87%</b>	<b>88%</b>	<b>89%</b>	<b>86%</b>	<b>88%</b>	<b>88%</b>	<b>87%</b>	<b>92%</b>	<b>90%</b>	<b>89%</b>	<b>87%</b>	<b>91%</b>



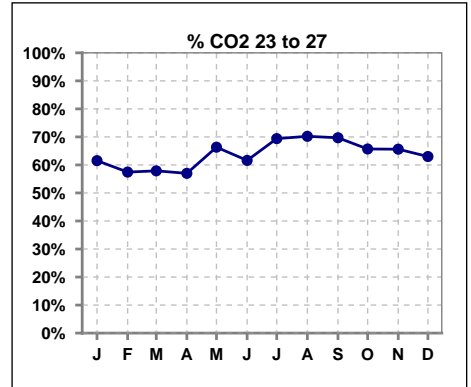
Methodology: a) All labs for 'Adequacy of Dialysis', 'Nutrition', 'Osteodystrophy', 'Anemia' and 'Diabetes' based on last value of month; b) BP's and #L processed are average of all values for month; c) Access data takes last access of month; d) Values for SGA and 'Infection Control' use most recent result.

**I. ADEQUACY OF DIALYSIS - CONT.**

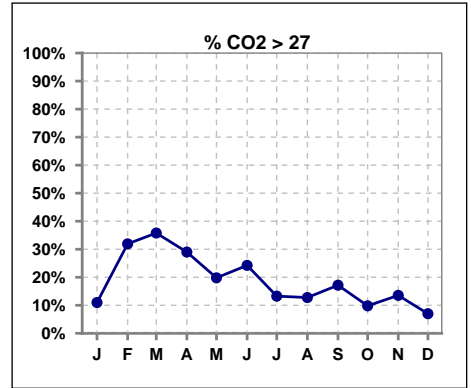
	Jan	Feb	Mar	Apr	May	Jun	Jul	Aug	Sep	Oct	Nov	Dec
# CO2	91	94	95	100	101	99	98	94	99	102	96	100
# CO2 < 23	25	10	6	14	14	14	17	16	13	25	20	30
Pop. Mean	24	26	26	26	25	26	25	25	25	24	24	24
Std. Deviation	2.68	2.61	2.84	3.23	2.58	3.02	2.43	2.90	2.94	2.77	3.29	2.33
% CO2 < 23	27%	11%	6%	14%	14%	14%	17%	17%	13%	25%	21%	30%



	Jan	Feb	Mar	Apr	May	Jun	Jul	Aug	Sep	Oct	Nov	Dec
# CO2	91	94	95	100	101	99	98	94	99	102	96	100
# CO2 23 to 27	56	54	55	57	67	61	68	66	69	67	63	63
Pop. Mean	24	26	26	26	25	26	25	25	25	24	24	24
Std. Deviation	2.68	2.61	2.84	3.23	2.58	3.02	2.43	2.90	2.94	2.77	3.29	2.33
% CO2 23 to 27	62%	57%	58%	57%	66%	62%	69%	70%	70%	66%	66%	63%



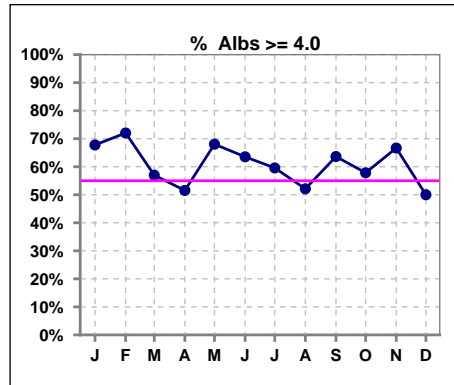
	Jan	Feb	Mar	Apr	May	Jun	Jul	Aug	Sep	Oct	Nov	Dec
# CO2	91	94	95	100	101	99	98	94	99	102	96	100
# CO2 > 27	10	30	34	29	20	24	13	12	17	10	13	7
Pop. Mean	24	26	26	26	25	26	25	25	25	24	24	24
Std. Deviation	2.68	2.61	2.84	3.23	2.58	3.02	2.43	2.90	2.94	2.77	3.29	2.33
% CO2 > 27	11%	32%	36%	29%	20%	24%	13%	13%	17%	10%	14%	7%



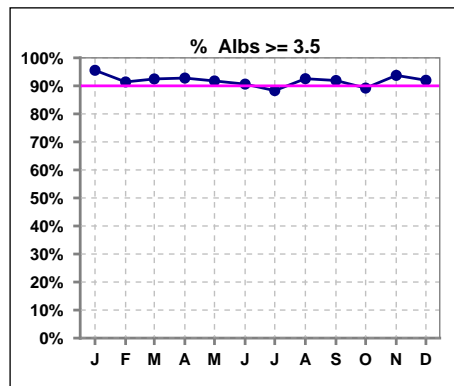
\*Albumin values use BCG method - as of July 2001

**II. NUTRITION**

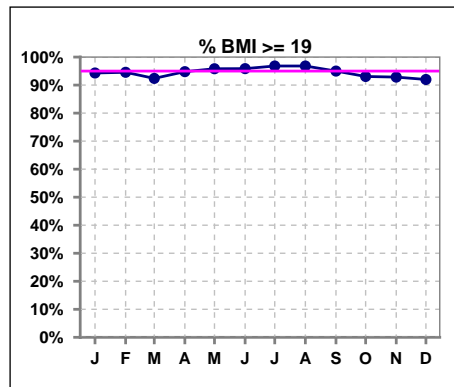
	Jan	Feb	Mar	Apr	May	Jun	Jul	Aug	Sep	Oct	Nov	Dec
# Albumin	90	93	93	97	97	96	94	94	99	102	96	100
# Albumin >= 4.0	61	67	53	50	66	61	56	49	63	59	64	50
Pop. Mean	4.1	4.1	4.0	3.9	4.0	4.0	4.0	4.0	4.0	3.9	4.0	3.9
Std. Deviation	0.37	0.37	0.35	0.41	0.41	0.36	0.37	0.40	0.43	0.40	0.42	0.36
% Alb >= 4.0	68%	72%	57%	52%	68%	64%	60%	52%	64%	58%	67%	50%



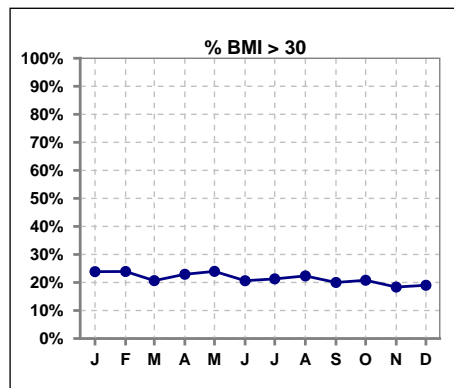
	Jan	Feb	Mar	Apr	May	Jun	Jul	Aug	Sep	Oct	Nov	Dec
# Albumin	90	93	93	97	97	96	94	94	99	102	96	100
# Albumin >= 3.5	86	85	86	90	89	87	83	87	91	91	90	92
Pop. Mean	4.1	4.1	4.0	3.9	4.0	4.0	4.0	4.0	4.0	3.9	4.0	3.9
Std. Deviation	0.37	0.37	0.35	0.41	0.41	0.36	0.37	0.40	0.43	0.40	0.42	0.36
% Alb >= 3.5	96%	91%	92%	93%	92%	91%	88%	93%	92%	89%	94%	92%



	Jan	Feb	Mar	Apr	May	Jun	Jul	Aug	Sep	Oct	Nov	Dec
# BMI	88	92	92	96	96	97	94	94	100	101	98	100
# BMI >= 19	83	87	85	91	92	93	91	91	95	94	91	92
Pop. Mean	27	26	26	26	26	26	26	26	26	26	26	26
Std. Deviation	5.6	5.7	5.7	6.5	6.4	6.4	6.4	6.6	6.5	6.6	6.6	6.5
% BMI >= 19	94%	95%	92%	95%	96%	96%	97%	97%	95%	93%	93%	92%



	Jan	Feb	Mar	Apr	May	Jun	Jul	Aug	Sep	Oct	Nov	Dec
# BMI	88	92	92	96	96	97	94	94	100	101	98	100
# BMI > 30	21	22	19	22	23	20	20	21	20	21	18	19
Pop. Mean	27	26	26	26	26	26	26	26	26	26	26	26
Std. Deviation	5.6	5.7	5.7	6.5	6.4	6.4	6.4	6.6	6.5	6.6	6.6	6.5
% BMI > 30	24%	24%	21%	23%	24%	21%	21%	22%	20%	21%	18%	19%

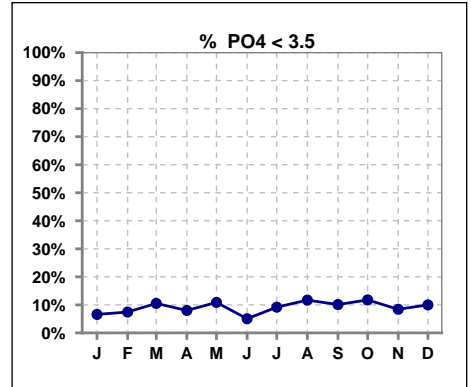


Methodology: a) All labs for 'Adequacy of Dialysis', 'Nutrition', 'Osteodystrophy', 'Anemia' and 'Diabetes' based on last value of month; b) BP's and #L processed are average of all values for month; c) Access data takes last access of month; d) Values for SGA and 'Infection Control' use most recent result.

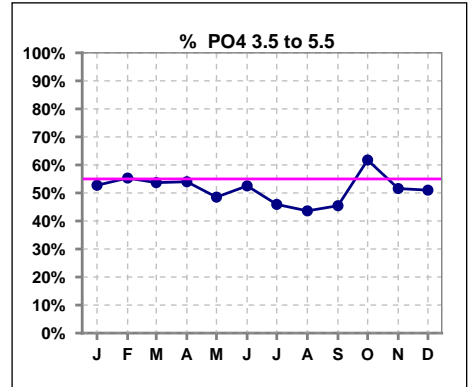
Lab methodology for PTH changed January 2012

**III. OSTEODYSTROPHY**

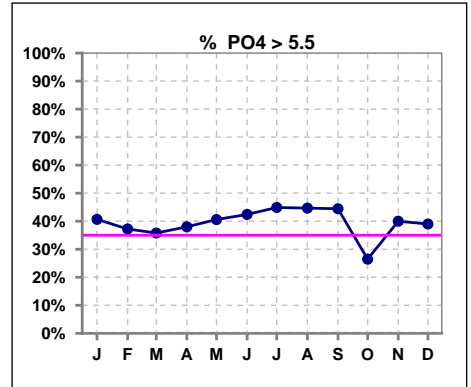
	Jan	Feb	Mar	Apr	May	Jun	Jul	Aug	Sep	Oct	Nov	Dec
# PO4	91	94	95	100	101	99	98	94	99	102	95	100
# PO4 < 3.5	6	7	10	8	11	5	9	11	10	12	8	10
Pop. Mean	5.5	5.5	5.5	5.3	5.4	5.6	5.7	5.4	5.5	5.2	5.5	5.3
Std. Deviation	1.89	1.73	2.00	1.75	1.81	1.74	1.90	1.87	1.69	1.83	2.05	1.71
% PO4 < 3.5	7%	7%	11%	8%	11%	5%	9%	12%	10%	12%	8%	10%



	Jan	Feb	Mar	Apr	May	Jun	Jul	Aug	Sep	Oct	Nov	Dec
# PO4	91	94	95	100	101	99	98	94	99	102	95	100
# PO4 3.5 to 5.5	48	52	51	54	49	52	45	41	45	63	49	51
Pop. Mean	5.5	5.5	5.5	5.3	5.4	5.6	5.7	5.4	5.5	5.2	5.5	5.3
Std. Deviation	1.89	1.73	2.00	1.75	1.81	1.74	1.90	1.87	1.69	1.83	2.05	1.71
% PO4 3.5 to 5.5	53%	55%	54%	54%	49%	53%	46%	44%	45%	62%	52%	51%



	Jan	Feb	Mar	Apr	May	Jun	Jul	Aug	Sep	Oct	Nov	Dec
# PO4	91	94	95	100	101	99	98	94	99	102	95	100
# PO4 > 5.5	37	35	34	38	41	42	44	42	44	27	38	39
Pop. Mean	5.5	5.5	5.5	5.3	5.4	5.6	5.7	5.4	5.5	5.2	5.5	5.3
Std. Deviation	1.89	1.73	2.00	1.75	1.81	1.74	1.90	1.87	1.69	1.83	2.05	1.71
% PO4 > 5.5	41%	37%	36%	38%	41%	42%	45%	45%	44%	26%	40%	39%

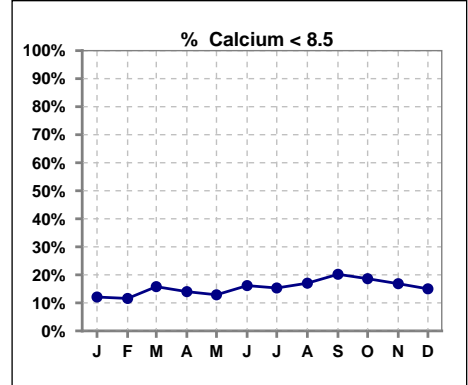


Methodology: a) All labs for 'Adequacy of Dialysis', 'Nutrition', 'Osteodystrophy', 'Anemia' and 'Diabetes' based on last value of month; b) BP's and #L processed are average of all values for month; c) Access data takes last access of month; d) Values for SGA and 'Infection Control' use most recent result.

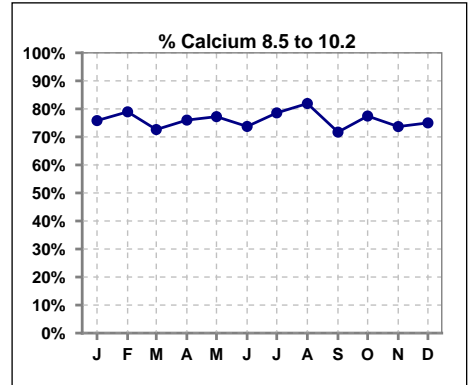
Lab methodology for PTH changed January 2012

**III. OSTEODYSTROPHY - CONT.**

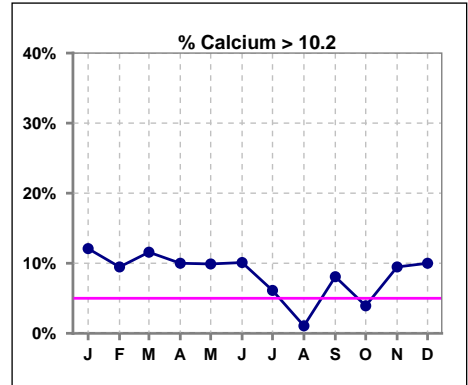
	Jan	Feb	Mar	Apr	May	Jun	Jul	Aug	Sep	Oct	Nov	Dec
# Calcium	91	95	95	100	101	99	98	94	99	102	95	100
# Calcium < 8.5	11	11	15	14	13	16	15	16	20	19	16	15
Pop. Mean	9.3	9.4	9.4	9.3	9.3	9.3	9.2	9.1	9.1	9.0	9.2	9.2
Std. Deviation	0.77	0.69	0.82	0.80	0.92	0.82	0.67	0.75	0.79	0.79	0.86	0.88
% Calcium < 8.5	12%	12%	16%	14%	13%	16%	15%	17%	20%	19%	17%	15%



	Jan	Feb	Mar	Apr	May	Jun	Jul	Aug	Sep	Oct	Nov	Dec
# Calcium	91	95	95	100	101	99	98	94	99	102	95	100
# Calcium 8.5 to 10.2	69	75	69	76	78	73	77	77	71	79	70	75
Pop. Mean	9.3	9.4	9.4	9.3	9.3	9.3	9.2	9.1	9.1	9.0	9.2	9.2
Std. Deviation	0.77	0.69	0.82	0.80	0.92	0.82	0.67	0.75	0.79	0.79	0.86	0.88
% Calcium 8.5 to 10.2	76%	79%	73%	76%	77%	74%	79%	82%	72%	77%	74%	75%



	Jan	Feb	Mar	Apr	May	Jun	Jul	Aug	Sep	Oct	Nov	Dec
# Calcium	91	95	95	100	101	99	98	94	99	102	95	100
# Calcium > 10.2	11	9	11	10	10	10	6	1	8	4	9	10
Pop. Mean	9.3	9.4	9.4	9.3	9.3	9.3	9.2	9.1	9.1	9.0	9.2	9.2
Std. Deviation	0.77	0.69	0.82	0.80	0.92	0.82	0.67	0.75	0.79	0.79	0.86	0.88
% Calcium > 10.2	12%	9%	12%	10%	10%	10%	6%	1%	8%	4%	9%	10%

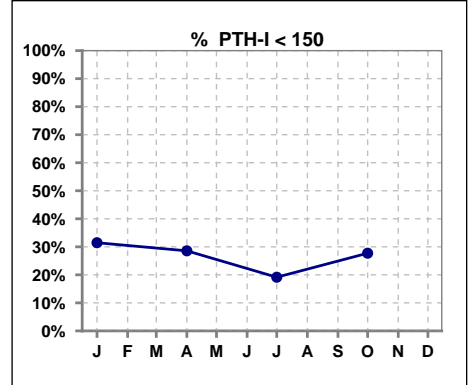


Methodology: a) All labs for 'Adequacy of Dialysis', 'Nutrition', 'Osteodystrophy', 'Anemia' and 'Diabetes' based on last value of month; b) BP's and #L processed are average of all values for month; c) Access data takes last access of month; d) Values for SGA and 'Infection Control' use most recent result.

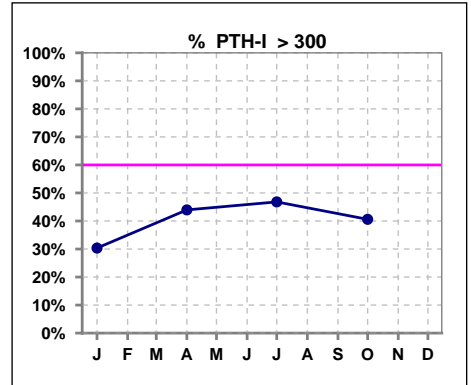
Lab methodology for PTH changed January 2012

**III. OSTEODYSTROPHY - CONT.**

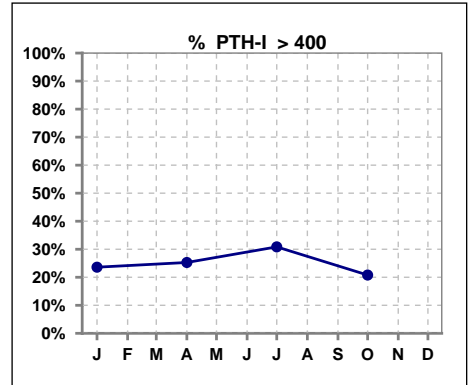
	Jan	Feb	Mar	Apr	May	Jun	Jul	Aug	Sep	Oct	Nov	Dec
# PTH-I	89			91			94			101		
# PTH-I < 150	28			26			18			28		
Pop. Mean	270			315			362			298		
Std. Deviation	206			251			274			218		
% PTH-I < 150	31%			29%			19%			28%		



	Jan	Feb	Mar	Apr	May	Jun	Jul	Aug	Sep	Oct	Nov	Dec
# PTH-I	89			91			94			101		
# PTH-I > 300	27			40			44			41		
Pop. Mean	270			315			362			298		
Std. Deviation	206			251			274			218		
% PTH-I > 300	30%			44%			47%			41%		



	Jan	Feb	Mar	Apr	May	Jun	Jul	Aug	Sep	Oct	Nov	Dec
# PTH-I	89			91			94			101		
# PTH-I > 400	21			23			29			21		
Pop. Mean	270			315			362			298		
Std. Deviation	206			251			274			218		
% PTH-I > 400	24%			25%			31%			21%		

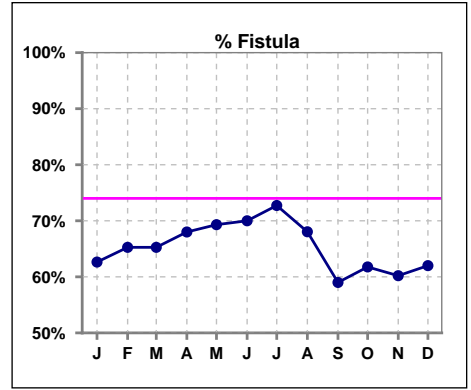


Methodology: a) All labs for 'Adequacy of Dialysis', 'Nutrition', 'Osteodystrophy', 'Anemia' and 'Diabetes' based on last value of month; b) BP's and #L processed are average of all values for month; c) Access data takes last access of month; d) Values for SGA and 'Infection Control' use most recent result.

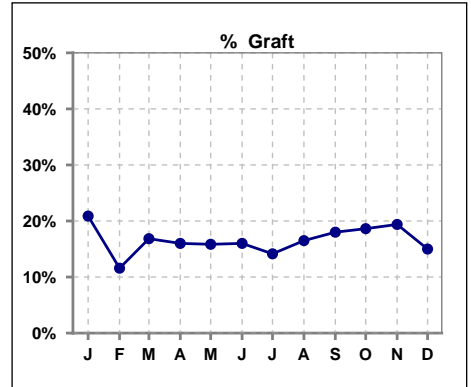


**IV. ACCESS**

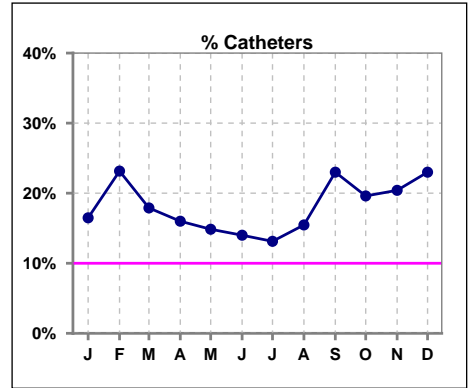
	Jan	Feb	Mar	Apr	May	Jun	Jul	Aug	Sep	Oct	Nov	Dec
# Access	91	95	95	100	101	100	99	97	100	102	98	100
# Fistula	57	62	62	68	70	70	72	66	59	63	59	62
% Fistula	63%	65%	65%	68%	69%	70%	73%	68%	59%	62%	60%	62%



	Jan	Feb	Mar	Apr	May	Jun	Jul	Aug	Sep	Oct	Nov	Dec
# Access	91	95	95	100	101	100	99	97	100	102	98	100
# Graft	19	11	16	16	16	16	14	16	18	19	19	15
% Graft	21%	12%	17%	16%	16%	16%	14%	16%	18%	19%	19%	15%



	Jan	Feb	Mar	Apr	May	Jun	Jul	Aug	Sep	Oct	Nov	Dec
# Access	91	95	95	100	101	100	99	97	100	102	98	100
# Catheters	15	22	17	16	15	14	13	15	23	20	20	23
% Catheters	16%	23%	18%	16%	15%	14%	13%	15%	23%	20%	20%	23%



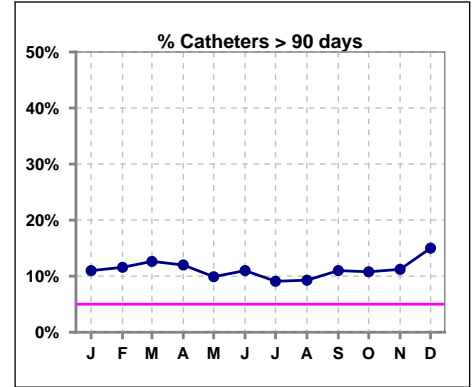
Methodology: a) All labs for 'Adequacy of Dialysis', 'Nutrition', 'Osteodystrophy', 'Anemia' and 'Diabetes' based on last value of month; b) BP's and #L processed are average of all values for month; c) Access data takes last access of month; d) Values for SGA and 'Infection Control' use most recent result.

**IV. ACCESS - CONT.**

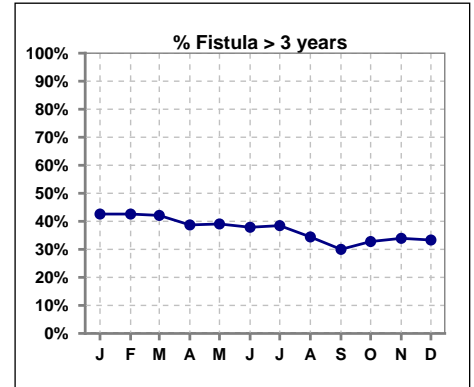
**Catheters > 90 days**

	Jan	Feb	Mar	Apr	May	Jun	Jul	Aug	Sep	Oct	Nov	Dec
# Access	91	95	95	100	101	100	99	97	100	102	98	100
# Catheters	10	11	12	12	10	11	9	9	11	11	11	15
% Catheters	11%	12%	13%	12%	10%	11%	9%	9%	11%	11%	11%	15%

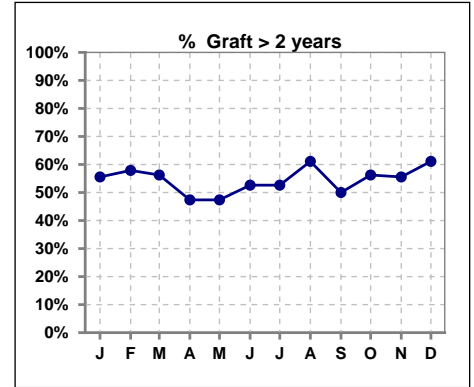
Definition: Catheter in use on last treatment of the month



	Jan	Feb	Mar	Apr	May	Jun	Jul	Aug	Sep	Oct	Nov	Dec
# Fistula	54	54	57	62	64	66	65	61	60	61	56	57
# Fistula > 3 yrs	23	23	24	24	25	25	25	21	18	20	19	19
% Fistula > 3 yrs	43%	43%	42%	39%	39%	38%	38%	34%	30%	33%	34%	33%



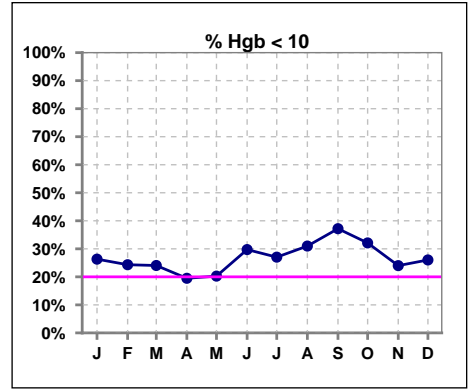
	Jan	Feb	Mar	Apr	May	Jun	Jul	Aug	Sep	Oct	Nov	Dec
# Graft	18	19	16	19	19	19	19	18	16	16	18	18
# Graft > 2 yrs	10	11	9	9	9	10	10	11	8	9	10	11
% Graft > 2 yrs	56%	58%	56%	47%	47%	53%	53%	61%	50%	56%	56%	61%



**V. ANEMIA**

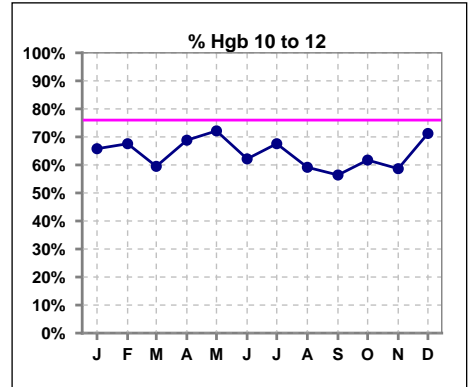
	Jan	Feb	Mar	Apr	May	Jun	Jul	Aug	Sep	Oct	Nov	Dec
# Hgb	76	74	79	77	79	74	74	71	78	81	75	73
# Hgb < 10	20	18	19	15	16	22	20	22	29	26	18	19
Pop. Mean	10.6	10.7	10.7	10.7	10.6	10.6	10.6	10.5	10.3	10.4	10.8	10.4
Std. Deviation	1.1	1.3	1.3	1.2	1.2	1.2	1.1	1.2	1.1	1.1	1.4	1.0
% Hgb < 10	26%	24%	24%	19%	20%	30%	27%	31%	37%	32%	24%	26%

Note: Excludes patients who received no ESA in month.



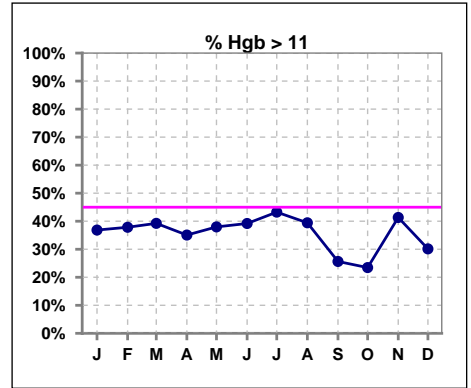
	Jan	Feb	Mar	Apr	May	Jun	Jul	Aug	Sep	Oct	Nov	Dec
# Hgb	76	74	79	77	79	74	74	71	78	81	75	73
# Hgb 10 to 12	50	50	47	53	57	46	50	42	44	50	44	52
Pop. Mean	10.6	10.7	10.7	10.7	10.6	10.6	10.6	10.5	10.3	10.4	10.8	10.4
Std. Deviation	1.1	1.3	1.3	1.2	1.2	1.2	1.1	1.2	1.1	1.1	1.4	1.0
% Hgb 10 to 12	66%	68%	59%	69%	72%	62%	68%	59%	56%	62%	59%	71%

Note: Excludes patients who received no ESA in month.



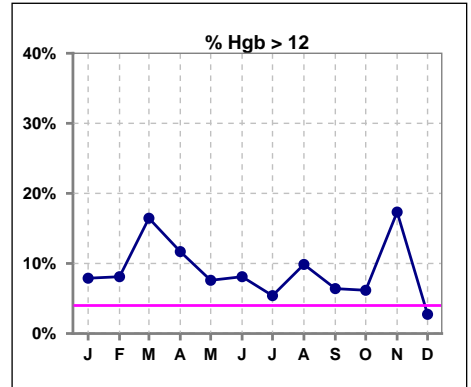
	Jan	Feb	Mar	Apr	May	Jun	Jul	Aug	Sep	Oct	Nov	Dec
# Hgb	76	74	79	77	79	74	74	71	78	81	75	73
# Hgb > 11	28	28	31	27	30	29	32	28	20	19	31	22
Pop. Mean	10.6	10.7	10.7	10.7	10.6	10.6	10.6	10.5	10.3	10.4	10.8	10.4
Std. Deviation	1.1	1.3	1.3	1.2	1.2	1.2	1.1	1.2	1.1	1.1	1.4	1.0
% Hgb > 11	37%	38%	39%	35%	38%	39%	43%	39%	26%	23%	41%	30%

Note: Excludes patients who received no ESA in month.



	Jan	Feb	Mar	Apr	May	Jun	Jul	Aug	Sep	Oct	Nov	Dec
# Hgb	76	74	79	77	79	74	74	71	78	81	75	73
# Hgb > 12	6	6	13	9	6	6	4	7	5	5	13	2
Pop. Mean	10.6	10.7	10.7	10.7	10.6	10.6	10.6	10.5	10.3	10.4	10.8	10.4
Std. Deviation	1.1	1.3	1.3	1.2	1.2	1.2	1.1	1.2	1.1	1.1	1.4	1.0
% Hgb > 12	8%	8%	16%	12%	8%	8%	5%	10%	6%	6%	17%	3%

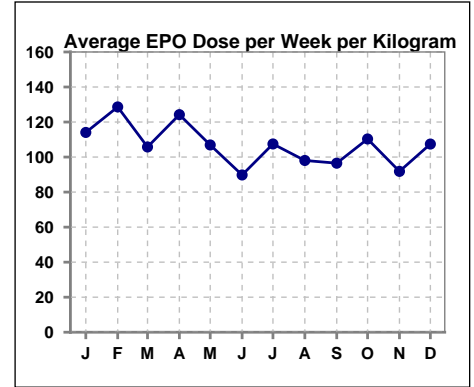
Note: Excludes patients who received no ESA in month.



**V. ANEMIA - CONT.**

Average EPO Dose per Week per Kilogram

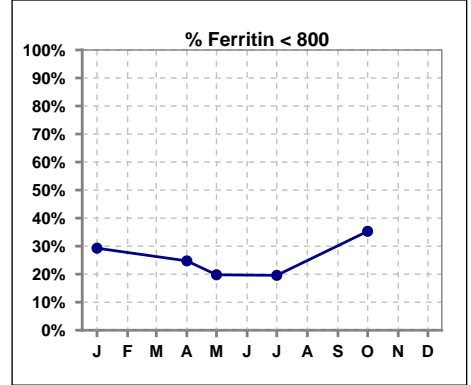
	Jan	Feb	Mar	Apr	May	Jun	Jul	Aug	Sep	Oct	Nov	Dec
# Average EPO	114.1	128.6	105.8	124.2	106.9	89.8	107.5	98.1	96.5	110.3	91.8	107.4



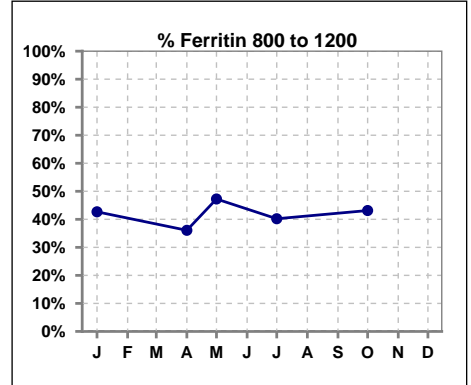
**V. ANEMIA - CONT.**

**Iron Profile**

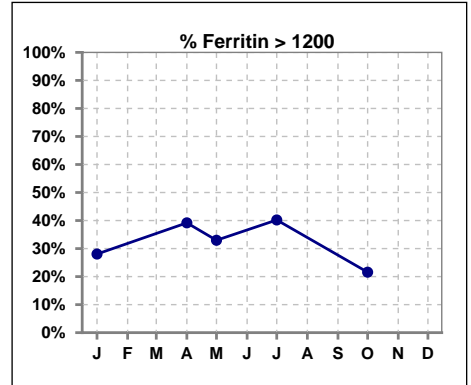
	Jan	Feb	Mar	Apr	May	Jun	Jul	Aug	Sep	Oct	Nov	Dec
# Ferritin	82			97	91		97			102		
# Ferritin < 800	24			24	18		19			36		
Pop. Mean	958			1141	1071		1070			951		
Std. Deviation	403			638	359		405			389		
<b>% Ferritin &lt; 800</b>	<b>29%</b>			<b>25%</b>	<b>20%</b>		<b>20%</b>			<b>35%</b>		



	Jan	Feb	Mar	Apr	May	Jun	Jul	Aug	Sep	Oct	Nov	Dec
# Ferritin	82			97	91		97			102		
# Ferritin 800 to 1200	35			35	43		39			44		
Pop. Mean	958			1141	1071		1070			951		
Std. Deviation	403			638	359		405			389		
<b>% Ferritin 800 to 1200</b>	<b>43%</b>			<b>36%</b>	<b>47%</b>		<b>40%</b>			<b>43%</b>		

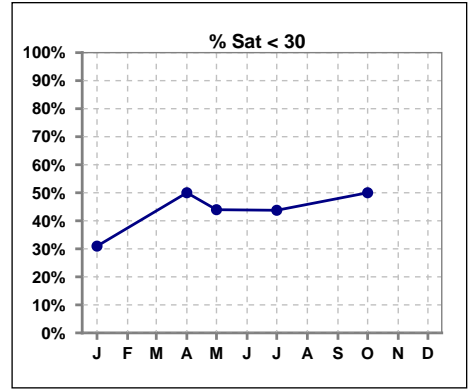


	Jan	Feb	Mar	Apr	May	Jun	Jul	Aug	Sep	Oct	Nov	Dec
# Ferritin	82			97	91		97			102		
# Ferritin > 1200	23			38	30		39			22		
Pop. Mean	958			1141	1071		1070			951		
Std. Deviation	403			638	359		405			389		
<b>% Ferritin &gt; 1200</b>	<b>28%</b>			<b>39%</b>	<b>33%</b>		<b>40%</b>			<b>22%</b>		

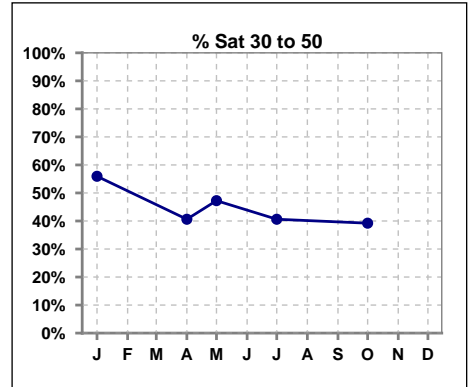


**V. ANEMIA - CONT.**

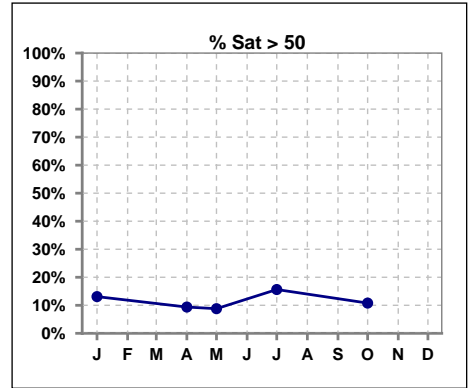
	Jan	Feb	Mar	Apr	May	Jun	Jul	Aug	Sep	Oct	Nov	Dec
# % Sat	84			96	91		96			102		
# % Sat < 30	26			48	40		42			51		
Pop. Mean	36			33	31		36			32		
Std. Deviation	15			17	12		18			15		
<b>% % Sat &lt; 30</b>	<b>31%</b>			<b>50%</b>	<b>44%</b>		<b>44%</b>			<b>50%</b>		



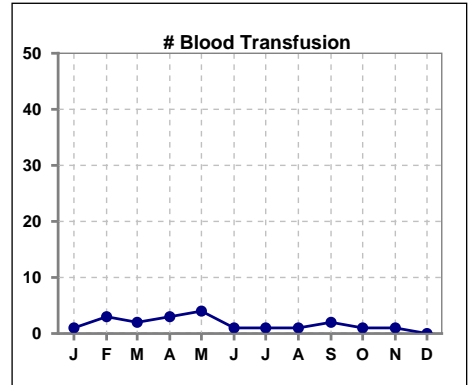
	Jan	Feb	Mar	Apr	May	Jun	Jul	Aug	Sep	Oct	Nov	Dec
# % Sat	84			96	91		96			102		
# % Sat 30 to 50	47			39	43		39			40		
Pop. Mean	36			33	31		36			32		
Std. Deviation	15			17	12		18			15		
<b>% % Sat 30 to 50</b>	<b>56%</b>			<b>41%</b>	<b>47%</b>		<b>41%</b>			<b>39%</b>		



	Jan	Feb	Mar	Apr	May	Jun	Jul	Aug	Sep	Oct	Nov	Dec
# % Sat	84			96	91		96			102		
# % Sat > 50	11			9	8		15			11		
Pop. Mean	36			33	31		36			32		
Std. Deviation	15			17	12		18			15		
<b>% % Sat &gt; 50</b>	<b>13%</b>			<b>9%</b>	<b>9%</b>		<b>16%</b>			<b>11%</b>		

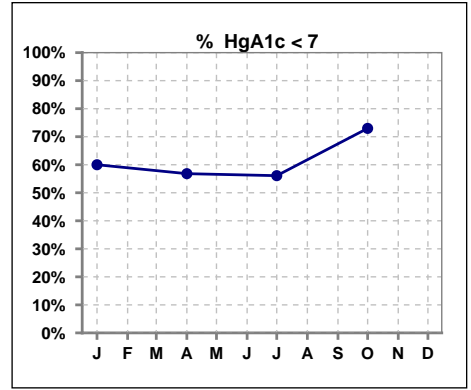


	Jan	Feb	Mar	Apr	May	Jun	Jul	Aug	Sep	Oct	Nov	Dec
<b># Blood Transfusion</b>	<b>1</b>	<b>3</b>	<b>2</b>	<b>3</b>	<b>4</b>	<b>1</b>	<b>1</b>	<b>1</b>	<b>2</b>	<b>1</b>	<b>1</b>	<b>0</b>



**VI. Diabetes**

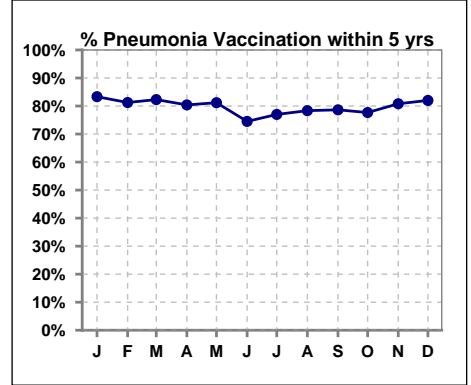
	Jan	Feb	Mar	Apr	May	Jun	Jul	Aug	Sep	Oct	Nov	Dec
# HgA1c	35			44			41			37		
# HgA1c < 7	21			25			23			27		
Pop. Mean	7.1			6.8			6.8			6.4		
Std. Deviation	1.86			1.66			1.65			1.31		
<b>% HgA1c &lt; 7</b>	<b>60%</b>			<b>57%</b>			<b>56%</b>			<b>73%</b>		



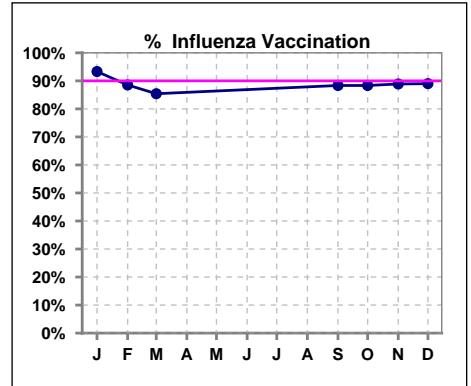
**VII. Infection Control**

**Pneumonia vaccination within the past five years**

	Jan	Feb	Mar	Apr	May	Jun	Jul	Aug	Sep	Oct	Nov	Dec
# Patient	90	96	96	102	101	102	100	97	103	103	99	100
# Pneumonia	75	78	79	82	82	76	77	76	81	80	80	82
% Pneumonia	83%	81%	82%	80%	81%	75%	77%	78%	79%	78%	81%	82%



	Jan	Feb	Mar	Apr	May	Jun	Jul	Aug	Sep	Oct	Nov	Dec
# Patient	90	96	96						103	103	99	100
# Influenza	84	85	82						91	91	88	89
% Influenza	93%	89%	85%						88%	88%	89%	89%

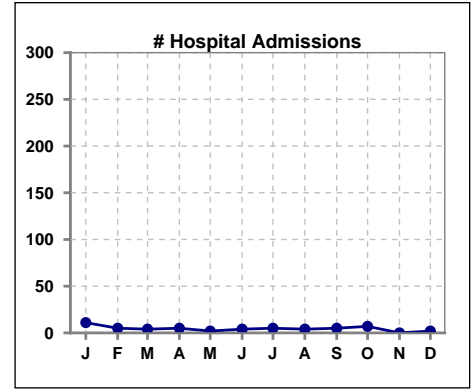


Methodology: a) All labs for 'Adequacy of Dialysis', 'Nutrition', 'Osteodystrophy', 'Anemia' and 'Diabetes' based on last value of month; b) BP's and #L processed are average of all values for month; c) Access data takes last access of month; d) Values for SGA and 'Infection Control' use most recent result.

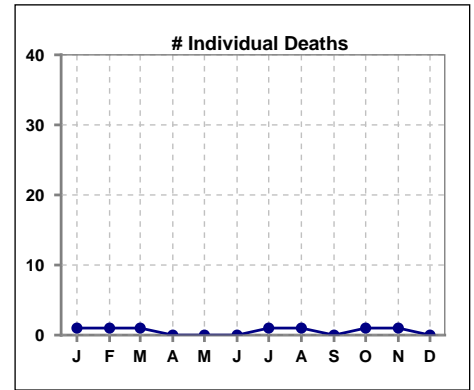


**VIII. Misc**

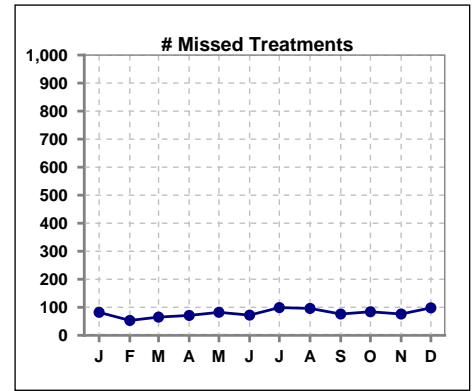
	Jan	Feb	Mar	Apr	May	Jun	Jul	Aug	Sep	Oct	Nov	Dec
<b># Hospital Admissions</b>	11	5	4	5	2	4	5	4	5	7	0	2



	Jan	Feb	Mar	Apr	May	Jun	Jul	Aug	Sep	Oct	Nov	Dec
<b># Individual Deaths</b>	1	1	1	0	0	0	1	1	0	1	1	0



	Jan	Feb	Mar	Apr	May	Jun	Jul	Aug	Sep	Oct	Nov	Dec
<b># Missed Treatments</b>	82	53	65	71	82	72	99	96	76	84	76	98



Methodology: a) All labs for 'Adequacy of Dialysis', 'Nutrition', 'Osteodystrophy', 'Anemia' and 'Diabetes' based on last value of month; b) BP's and #L processed are average of all values for month; c) Access data takes last access of month; d) Values for SGA and 'Infection Control' use most recent result.