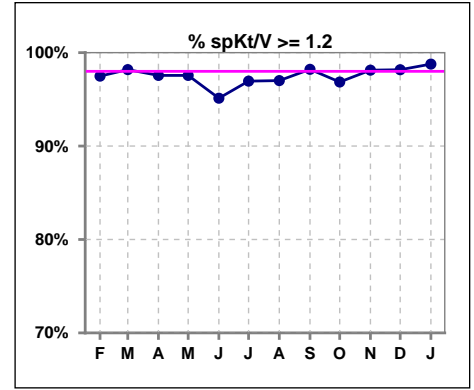
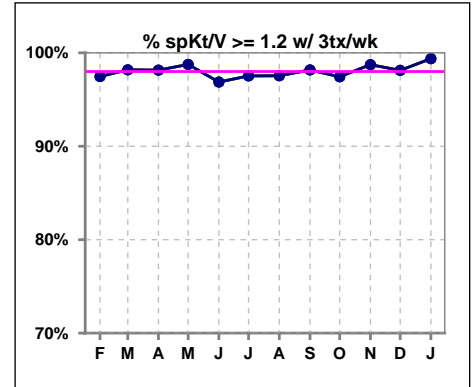


I. ADEQUACY OF DIALYSIS

	Feb	Mar	Apr	May	Jun	Jul	Aug	Sep	Oct	Nov	Dec	Jan
# spKt/V	159	165	164	164	164	164	167	168	159	160	164	163
# spKt/V >= 1.2	155	162	160	160	156	159	162	165	154	157	161	161
Pop. Mean	1.59	1.61	1.57	1.58	1.55	1.54	1.54	1.55	1.56	1.52	1.54	1.55
Std. Deviation	0.39	0.44	0.26	0.31	0.28	0.29	0.35	0.27	0.31	0.28	0.27	0.27
% spKt/V >= 1.2	97%	98%	98%	98%	95%	97%	97%	98%	97%	98%	98%	99%



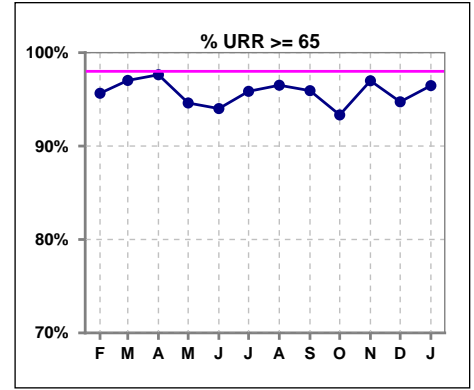
	Feb	Mar	Apr	May	Jun	Jul	Aug	Sep	Oct	Nov	Dec	Jan
# spKt/V w/ 3tx/wk	158	165	162	161	160	162	163	164	156	158	160	160
# spKt/V >= 1.2 w/3tx/wk	154	162	159	159	155	158	159	161	152	156	157	159
Pop. Mean	1.59	1.61	1.57	1.58	1.56	1.54	1.54	1.55	1.56	1.53	1.53	1.55
Std. Deviation	0.38	0.44	0.25	0.29	0.27	0.28	0.33	0.27	0.30	0.28	0.26	0.25
% >= 1.2 w/3tx/wk	97%	98%	98%	99%	97%	98%	98%	98%	97%	99%	98%	99%



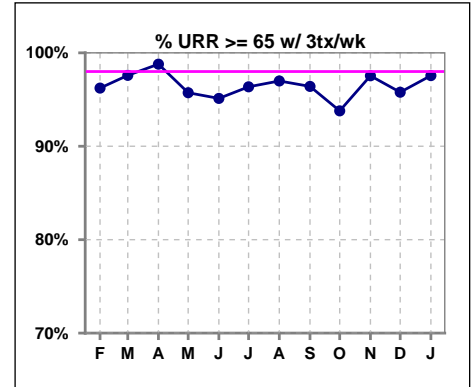
Methodology: a) All labs for 'Adequacy of Dialysis', 'Nutrition', 'Osteodystrophy', 'Anemia' and 'Diabetes' based on last value of month; b) BP's and #L processed are average of all values for month; c) Access data takes last access of month; d) Values for SGA and 'Infection Control' use most recent result.

I. ADEQUACY OF DIALYSIS - CONT.

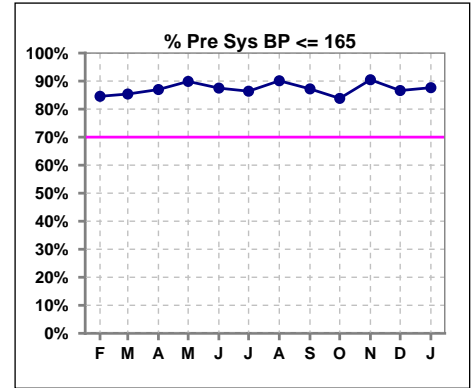
	Feb	Mar	Apr	May	Jun	Jul	Aug	Sep	Oct	Nov	Dec	Jan
# URR	161	168	169	167	167	169	172	172	165	166	171	170
# URR >= 65	154	163	165	158	157	162	166	165	154	161	162	164
Pop. Mean	74	74	74	74	74	74	74	74	73	74	73	74
Std. Deviation	6.13	5.67	5.56	6.08	6.86	6.00	6.35	5.74	6.21	5.76	5.87	6.00
% URR >= 65	96%	97%	98%	95%	94%	96%	97%	96%	93%	97%	95%	96%



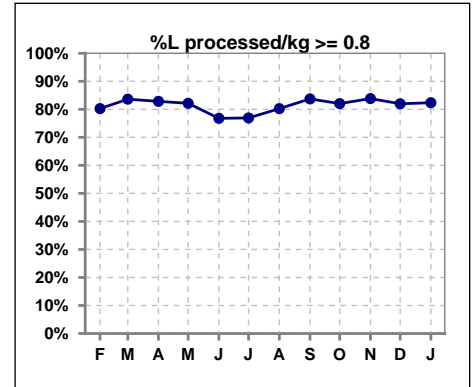
	Feb	Mar	Apr	May	Jun	Jul	Aug	Sep	Oct	Nov	Dec	Jan
# URR w/ 3tx/wk	159	166	165	164	164	165	166	167	161	163	166	164
# URR>=65 w/ 3tx/wk	153	162	163	157	156	159	161	161	151	159	159	160
Pop. Mean	74	74	74	74	74	74	74	74	73	74	73	74
Std. Deviation	6.03	5.53	5.33	5.38	6.19	5.83	6.27	5.66	6.12	5.62	5.51	5.40
% URR>=65 w/ 3tx/wk	96%	98%	99%	96%	95%	96%	97%	96%	94%	98%	96%	98%



	Feb	Mar	Apr	May	Jun	Jul	Aug	Sep	Oct	Nov	Dec	Jan
# Pre Sys BP	162	171	169	168	168	169	172	172	167	168	172	170
# Pre Sys BP <= 165	140	148	152	151	149	152	157	152	142	153	150	152
Pop. Mean	144	145	144	142	143	143	142	144	146	143	144	145
Std. Deviation	19.3	18.6	18.9	19.0	18.6	18.3	18.0	18.1	19.1	18.0	18.6	18.0
% Pre Sys BP <= 165	85%	85%	87%	90%	88%	86%	90%	87%	84%	90%	87%	88%



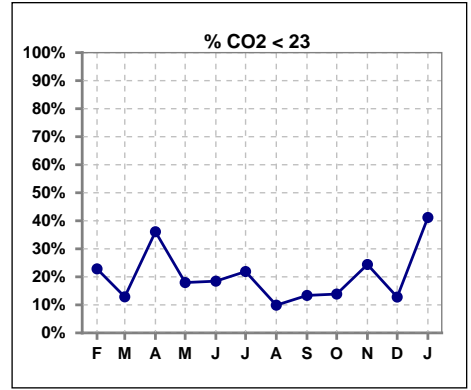
	Feb	Mar	Apr	May	Jun	Jul	Aug	Sep	Oct	Nov	Dec	Jan
# L processed/kg	162	171	169	168	168	169	172	172	167	167	172	170
# L processed/kg >= 0.8	130	143	140	138	129	130	138	144	137	140	141	140
Pop. Mean	1	1	1	1	1	1	1	1	1	1	1	1
Std. Deviation	0.3	0.3	0.3	0.3	0.3	0.3	0.3	0.3	0.3	0.3	0.3	0.3
% L processed/kg >= 0.8	80%	84%	83%	82%	77%	77%	80%	84%	82%	84%	82%	82%



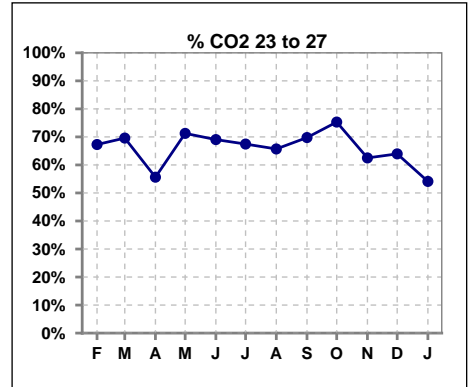
Methodology: a) All labs for 'Adequacy of Dialysis', 'Nutrition', 'Osteodystrophy', 'Anemia' and 'Diabetes' based on last value of month; b) BP's and #L processed are average of all values for month; c) Access data takes last access of month; d) Values for SGA and 'Infection Control' use most recent result.

I. ADEQUACY OF DIALYSIS - CONT.

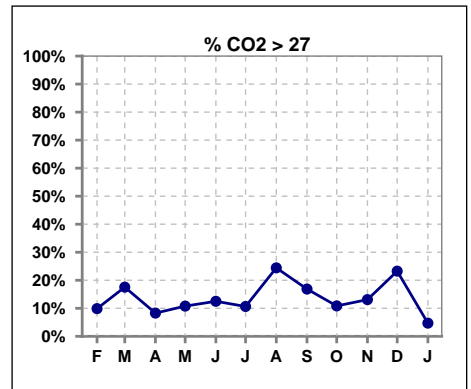
	Feb	Mar	Apr	May	Jun	Jul	Aug	Sep	Oct	Nov	Dec	Jan
# CO2	162	171	169	167	168	169	172	172	166	168	172	170
# CO2 < 23	37	22	61	30	31	37	17	23	23	41	22	70
Pop. Mean	24	25	24	25	24	24	26	25	25	24	25	23
Std. Deviation	2.85	2.57	2.92	2.42	2.77	2.98	2.99	2.75	2.50	2.77	2.61	2.77
% CO2 < 23	23%	13%	36%	18%	18%	22%	10%	13%	14%	24%	13%	41%



	Feb	Mar	Apr	May	Jun	Jul	Aug	Sep	Oct	Nov	Dec	Jan
# CO2	162	171	169	167	168	169	172	172	166	168	172	170
# CO2 23 to 27	109	119	94	119	116	114	113	120	125	105	110	92
Pop. Mean	24	25	24	25	24	24	26	25	25	24	25	23
Std. Deviation	2.85	2.57	2.92	2.42	2.77	2.98	2.99	2.75	2.50	2.77	2.61	2.77
% CO2 23 to 27	67%	70%	56%	71%	69%	67%	66%	70%	75%	63%	64%	54%



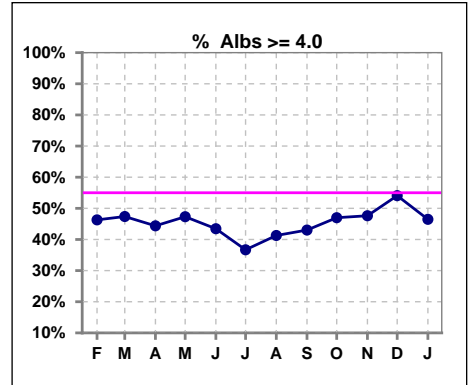
	Feb	Mar	Apr	May	Jun	Jul	Aug	Sep	Oct	Nov	Dec	Jan
# CO2	162	171	169	167	168	169	172	172	166	168	172	170
# CO2 > 27	16	30	14	18	21	18	42	29	18	22	40	8
Pop. Mean	24	25	24	25	24	24	26	25	25	24	25	23
Std. Deviation	2.85	2.57	2.92	2.42	2.77	2.98	2.99	2.75	2.50	2.77	2.61	2.77
% CO2 > 27	10%	18%	8%	11%	13%	11%	24%	17%	11%	13%	23%	5%



*Albumin values use BCG method - as of July 2001

II. NUTRITION

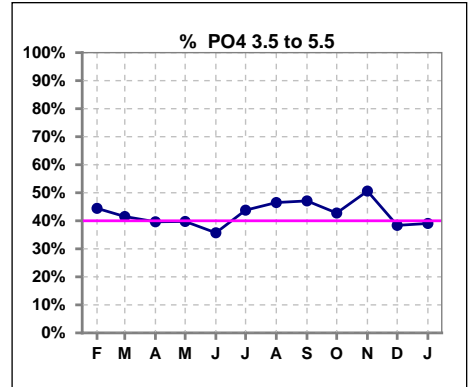
	Feb	Mar	Apr	May	Jun	Jul	Aug	Sep	Oct	Nov	Dec	Jan
# Albumin	162	171	169	167	168	169	172	172	166	168	172	170
# Albumin >= 4.0	75	81	75	79	73	62	71	74	78	80	93	79
Pop. Mean	3.9	3.9	3.9	3.9	3.9	3.8	3.8	3.8	3.9	3.9	3.9	3.9
Std. Deviation	0.40	0.41	0.45	0.43	0.41	0.39	0.41	0.42	0.40	0.42	0.44	0.42
% Alb >= 4.0	46%	47%	44%	47%	43%	37%	41%	43%	47%	48%	54%	46%



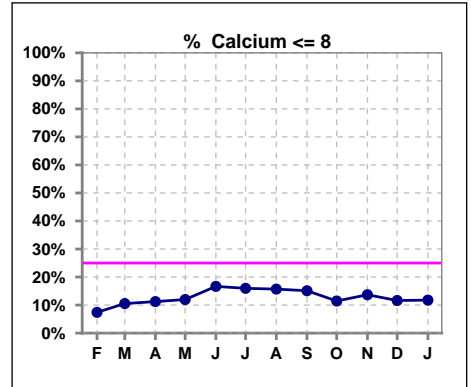
Lab methodology for PTH changed January 2012

III. OSTEODYSTROPHY

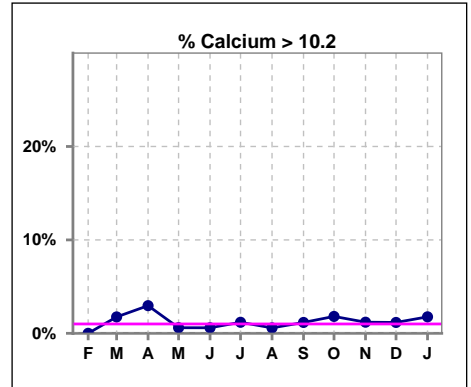
	Feb	Mar	Apr	May	Jun	Jul	Aug	Sep	Oct	Nov	Dec	Jan
# PO4	162	171	169	166	168	169	172	172	166	168	172	169
# PO4 3.5 to 5.5	72	71	67	66	60	74	80	81	71	85	66	66
Pop. Mean	5.7	5.9	5.8	5.7	6.0	5.9	5.9	5.8	5.7	5.7	5.7	5.9
Std. Deviation	1.74	1.63	1.74	1.65	2.05	1.77	1.97	1.75	1.60	1.74	1.69	1.87
% PO4 3.5 to 5.5	44%	42%	40%	40%	36%	44%	47%	47%	43%	51%	38%	39%



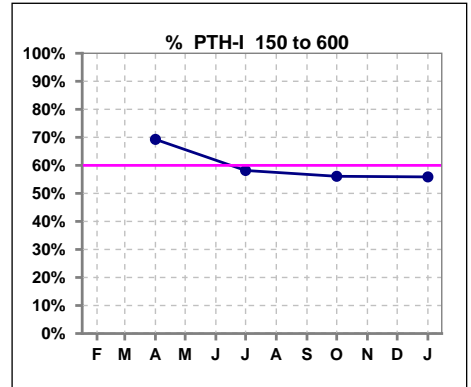
	Feb	Mar	Apr	May	Jun	Jul	Aug	Sep	Oct	Nov	Dec	Jan
# Calcium	162	171	169	167	168	169	172	172	166	168	172	170
# Calcium <= 8	12	18	19	20	28	27	27	26	19	23	20	20
Pop. Mean	9.0	8.9	9.0	8.9	8.8	8.8	8.7	8.9	9.0	8.8	8.9	8.9
Std. Deviation	0.64	0.68	0.75	0.70	0.77	0.70	0.72	0.79	0.76	0.75	0.73	0.71
% Calcium <= 8	7%	11%	11%	12%	17%	16%	16%	15%	11%	14%	12%	12%



	Feb	Mar	Apr	May	Jun	Jul	Aug	Sep	Oct	Nov	Dec	Jan
# Calcium	162	171	169	167	168	169	172	172	166	168	172	170
# Calcium > 10.2	0	3	5	1	1	2	1	2	3	2	2	3
Pop. Mean	9.0	8.9	9.0	8.9	8.8	8.8	8.7	8.9	9.0	8.8	8.9	8.9
Std. Deviation	0.64	0.68	0.75	0.70	0.77	0.70	0.72	0.79	0.76	0.75	0.73	0.71
% Calcium > 10.2	0%	2%	3%	1%	1%	1%	1%	1%	2%	1%	1%	2%



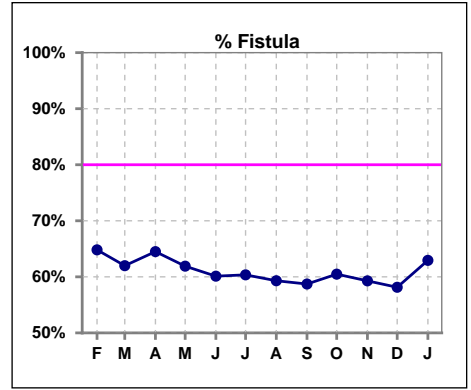
	Feb	Mar	Apr	May	Jun	Jul	Aug	Sep	Oct	Nov	Dec	Jan
# PTH-I			166			165			164			170
# PTH-I 150 to 600			115			96			92			95
Pop. Mean			485			578			488			553
Std. Deviation			363			452			419			395
% PTH-I 150 to 600			69%			58%			56%			56%



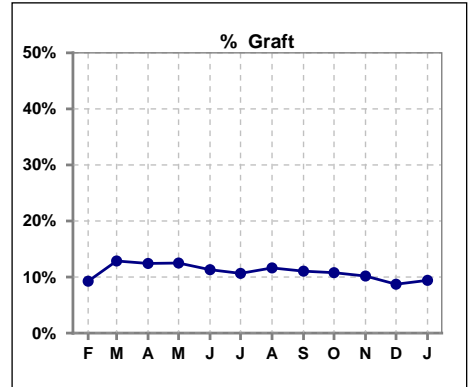
Methodology: a) All labs for 'Adequacy of Dialysis', 'Nutrition', 'Osteodystrophy', 'Anemia' and 'Diabetes' based on last value of month; b) BP's and #L processed are average of all values for month; c) Access data takes last access of month; d) Values for SGA and 'Infection Control' use most recent result.

IV. ACCESS

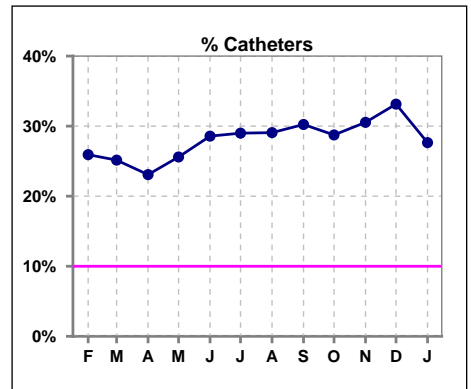
	Feb	Mar	Apr	May	Jun	Jul	Aug	Sep	Oct	Nov	Dec	Jan
# Access	162	171	169	168	168	169	172	172	167	167	172	170
# Fistula	105	106	109	104	101	102	102	101	101	99	100	107
% Fistula	65%	62%	64%	62%	60%	60%	59%	59%	60%	59%	58%	63%



	Feb	Mar	Apr	May	Jun	Jul	Aug	Sep	Oct	Nov	Dec	Jan
# Access	162	171	169	168	168	169	172	172	167	167	172	170
# Graft	15	22	21	21	19	18	20	19	18	17	15	16
% Graft	9%	13%	12%	13%	11%	11%	12%	11%	11%	10%	9%	9%



	Feb	Mar	Apr	May	Jun	Jul	Aug	Sep	Oct	Nov	Dec	Jan
# Access	162	171	169	168	168	169	172	172	167	167	172	170
# Catheters	42	43	39	43	48	49	50	52	48	51	57	47
% Catheters	26%	25%	23%	26%	29%	29%	29%	30%	29%	31%	33%	28%



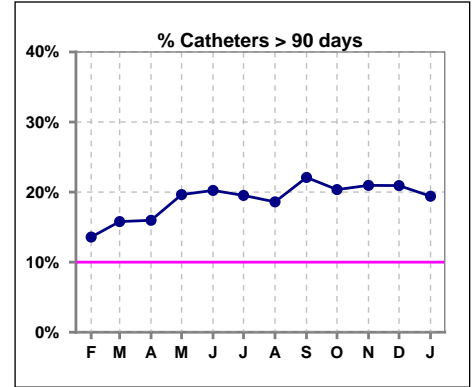
Methodology: a) All labs for 'Adequacy of Dialysis', 'Nutrition', 'Osteodystrophy', 'Anemia' and 'Diabetes' based on last value of month; b) BP's and #L processed are average of all values for month; c) Access data takes last access of month; d) Values for SGA and 'Infection Control' use most recent result.

IV. ACCESS - CONT.

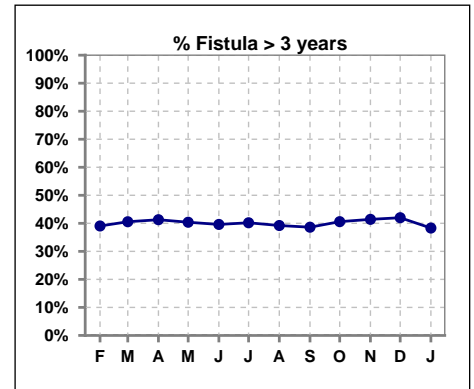
Catheters > 90 days

	Feb	Mar	Apr	May	Jun	Jul	Aug	Sep	Oct	Nov	Dec	Jan
# Access	162	171	169	168	168	169	172	172	167	167	172	170
# Catheters	22	27	27	33	34	33	32	38	34	35	36	33
% Catheters	14%	16%	16%	20%	20%	20%	19%	22%	20%	21%	21%	19%

Definition: Catheter in use on last treatment of the month



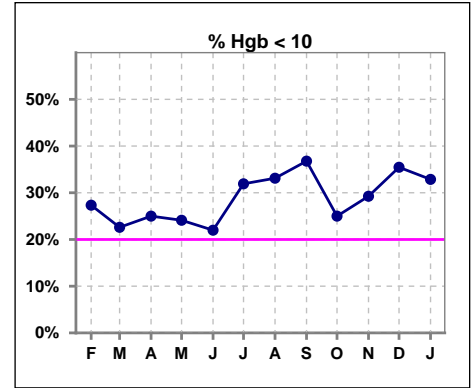
	Feb	Mar	Apr	May	Jun	Jul	Aug	Sep	Oct	Nov	Dec	Jan
# Fistula	105	106	109	104	101	102	102	101	101	99	100	107
# Fistula > 3 yrs	41	43	45	42	40	41	40	39	41	41	42	41
% Fistula > 3 yrs	39%	41%	41%	40%	40%	40%	39%	39%	41%	41%	42%	38%



V. ANEMIA

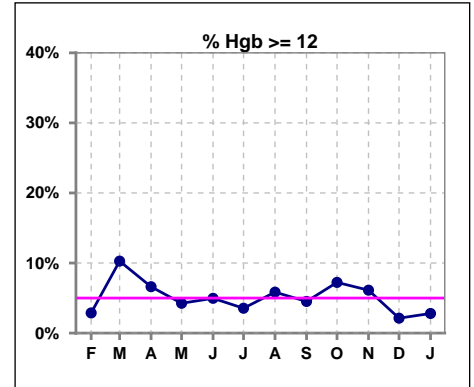
	Feb	Mar	Apr	May	Jun	Jul	Aug	Sep	Oct	Nov	Dec	Jan
# Hgb	139	146	136	141	141	141	154	155	152	147	141	143
# Hgb < 10	38	33	34	34	31	45	51	57	38	43	50	47
Pop. Mean	10.4	10.7	10.6	10.5	10.6	10.4	10.3	10.3	10.5	10.4	10.2	10.3
Std. Deviation	1.2	1.3	1.3	1.3	1.3	1.2	1.3	1.4	1.3	1.4	1.3	1.3
% Hgb < 10	27%	23%	25%	24%	22%	32%	33%	37%	25%	29%	35%	33%

Note: Excludes patients who received no ESA in month.



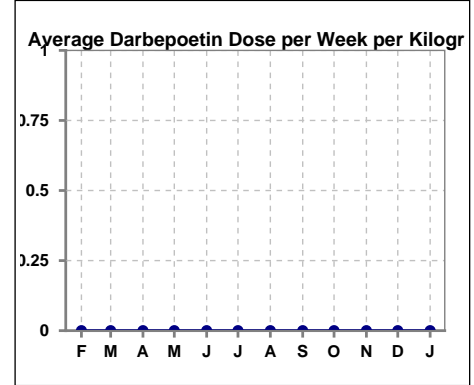
	Feb	Mar	Apr	May	Jun	Jul	Aug	Sep	Oct	Nov	Dec	Jan
# Hgb	139	146	136	141	141	141	154	155	152	147	141	143
# Hgb >= 12	4	15	9	6	7	5	9	7	11	9	3	4
Pop. Mean	10.4	10.7	10.6	10.5	10.6	10.4	10.3	10.3	10.5	10.4	10.2	10.3
Std. Deviation	1.2	1.3	1.3	1.3	1.3	1.2	1.3	1.4	1.3	1.4	1.3	1.3
% Hgb >= 12	3%	10%	7%	4%	5%	4%	6%	5%	7%	6%	2%	3%

Note: Excludes patients who received no ESA in month.



Average Darbepoetin Dose per Week per Kilogram

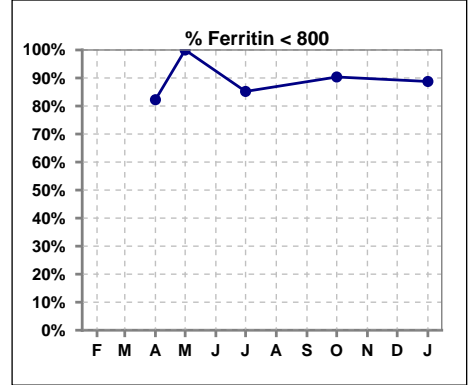
	Feb	Mar	Apr	May	Jun	Jul	Aug	Sep	Oct	Nov	Dec	Jan
# Average Darbepoetin	0	0	0	0	0	0	0	0	0	0	0	0



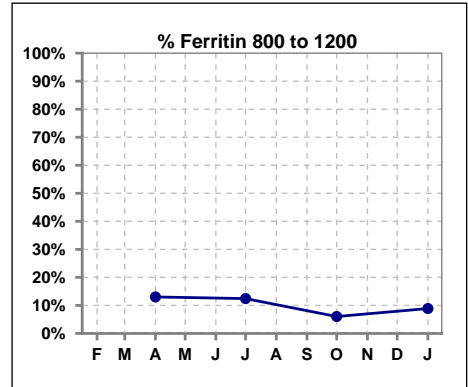
V. ANEMIA - CONT.

Iron Profile

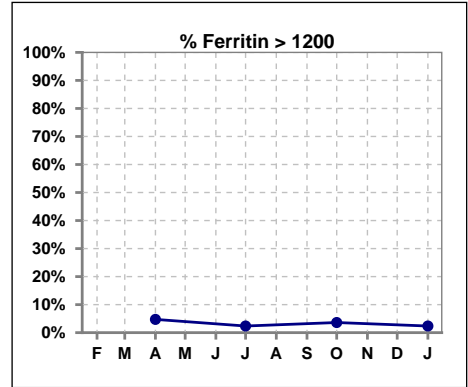
	Feb	Mar	Apr	May	Jun	Jul	Aug	Sep	Oct	Nov	Dec	Jan
# Ferritin			169	8		169			166			169
# Ferritin < 800			139	8		144			150			150
Pop. Mean			486	325		435			428			404
Std. Deviation			359	179		330			350			321
% Ferritin < 800			82%	100%		85%			90%			89%



	Feb	Mar	Apr	May	Jun	Jul	Aug	Sep	Oct	Nov	Dec	Jan
# Ferritin			169	8		169			166			169
# Ferritin 800 to 1200			22			21			10			15
Pop. Mean			486	325		435			428			404
Std. Deviation			359	179		330			350			321
% Ferritin 800 to 1200			13%			12%			6%			9%



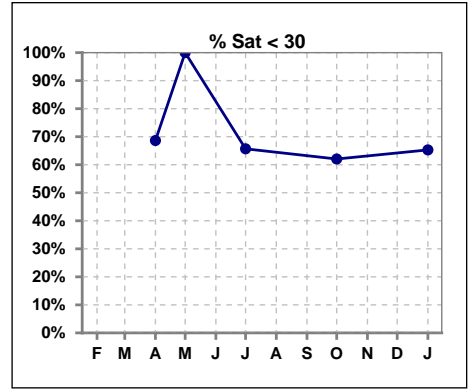
	Feb	Mar	Apr	May	Jun	Jul	Aug	Sep	Oct	Nov	Dec	Jan
# Ferritin			169	8		169			166			169
# Ferritin > 1200			8			4			6			4
Pop. Mean			486	325		435			428			404
Std. Deviation			359	179		330			350			321
% Ferritin > 1200			5%			2%			4%			2%



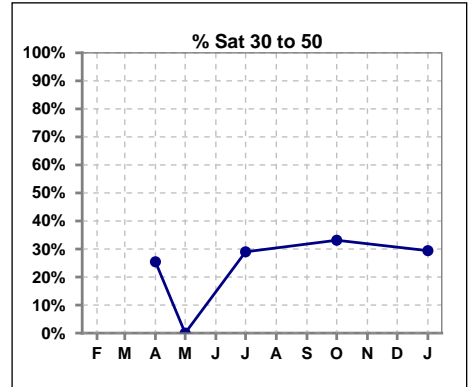
Methodology: a) All labs for 'Adequacy of Dialysis', 'Nutrition', 'Osteodystrophy', 'Anemia' and 'Diabetes' based on last value of month; b) BP's and #L processed are average of all values for month; c) Access data takes last access of month; d) Values for SGA and 'Infection Control' use most recent result.

V. ANEMIA - CONT.

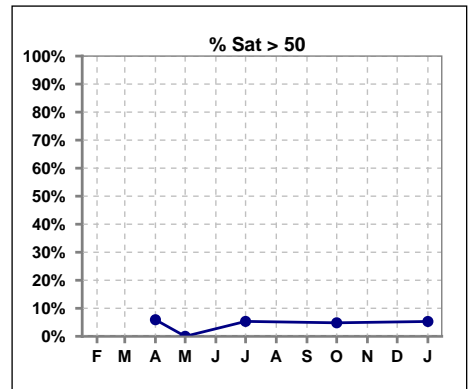
	Feb	Mar	Apr	May	Jun	Jul	Aug	Sep	Oct	Nov	Dec	Jan
# % Sat			169	9		169			166			170
# % Sat < 30			116	9		111			103			111
Pop. Mean			27	18		29			28			28
Std. Deviation			14	5		15			13			13
% % Sat < 30			69%	100%		66%			62%			65%



	Feb	Mar	Apr	May	Jun	Jul	Aug	Sep	Oct	Nov	Dec	Jan
# % Sat			169	9		169			166			170
# % Sat 30 to 50			43	0		49			55			50
Pop. Mean			27	18		29			28			28
Std. Deviation			14	5		15			13			13
% % Sat 30 to 50			25%	0%		29%			33%			29%

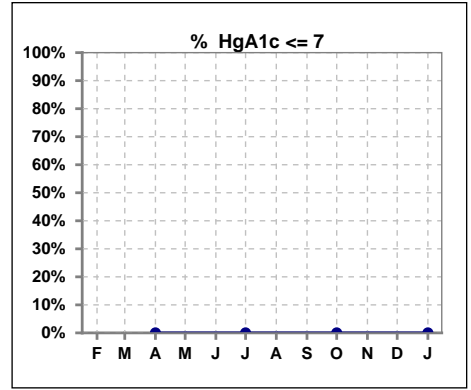


	Feb	Mar	Apr	May	Jun	Jul	Aug	Sep	Oct	Nov	Dec	Jan
# % Sat			169	9		169			166			170
# % Sat > 50			10	0		9			8			9
Pop. Mean			27	18		29			28			28
Std. Deviation			14	5		15			13			13
% % Sat > 50			6%	0%		5%			5%			5%



VI. Diabetes

	Feb	Mar	Apr	May	Jun	Jul	Aug	Sep	Oct	Nov	Dec	Jan
# HgA1c			0			0			0			0
# HgA1c <= 7			0			0			0			0
Pop. Mean			0			0			0			0
Std. Deviation			0			0			0			0
% HgA1c <= 7			0%			0%			0%			0%

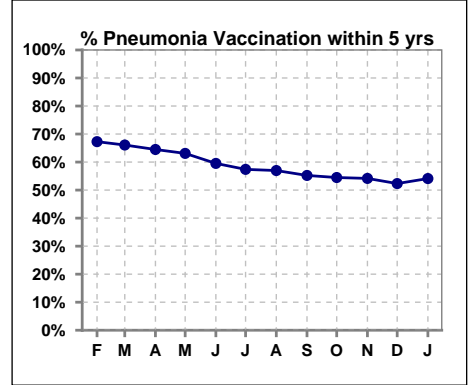


Methodology: a) All labs for 'Adequacy of Dialysis', 'Nutrition', 'Osteodystrophy', 'Anemia' and 'Diabetes' based on last value of month; b) BP's and #L processed are average of all values for month; c) Access data takes last access of month; d) Values for SGA and 'Infection Control' use most recent result.

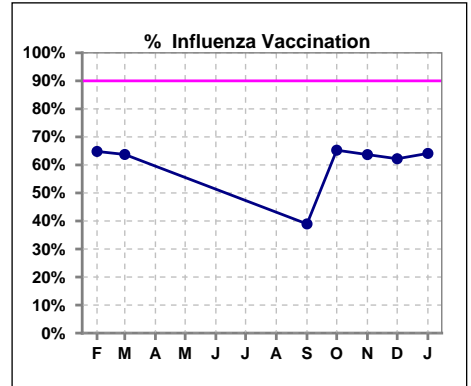
VII. Infection Control

Pneumonia vaccination within the past five years

	Feb	Mar	Apr	May	Jun	Jul	Aug	Sep	Oct	Nov	Dec	Jan
# Patient	162	171	169	168	168	169	172	172	167	168	172	170
# Pneumonia	109	113	109	106	100	97	98	95	91	91	90	92
% Pneumonia	67%	66%	64%	63%	60%	57%	57%	55%	54%	54%	52%	54%



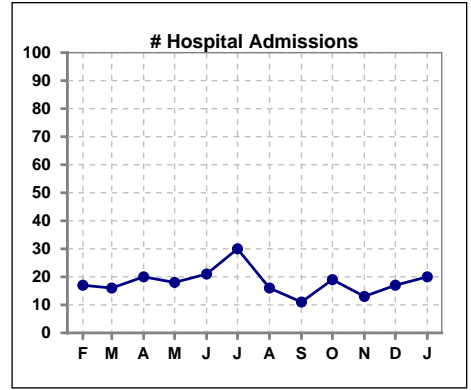
	Feb	Mar	Apr	May	Jun	Jul	Aug	Sep	Oct	Nov	Dec	Jan
# Patient	162	171						172	167	168	172	170
# Influenza	105	109						67	109	107	107	109
% Influenza	65%	64%						39%	65%	64%	62%	64%



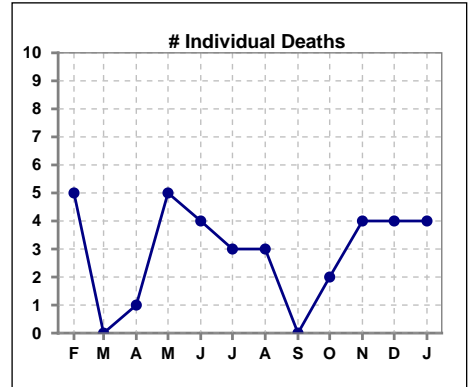
Methodology: a) All labs for 'Adequacy of Dialysis', 'Nutrition', 'Osteodystrophy', 'Anemia' and 'Diabetes' based on last value of month; b) BP's and #L processed are average of all values for month; c) Access data takes last access of month; d) Values for SGA and 'Infection Control' use most recent result.

VIII. Outcome measures

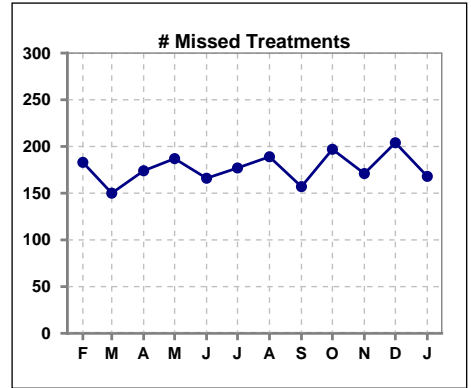
	Feb	Mar	Apr	May	Jun	Jul	Aug	Sep	Oct	Nov	Dec	Jan
# Patient	162	171	169	168	168	169	172	172	167	168	172	170
# Hospital Admissions	17	16	20	18	21	30	16	11	19	13	17	20



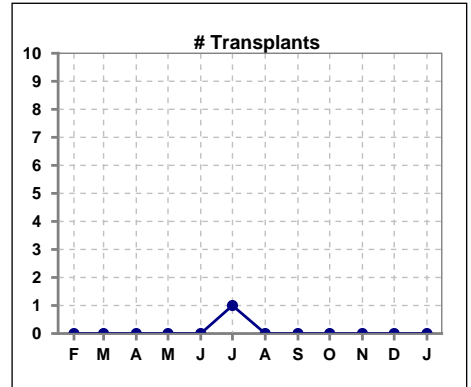
	Feb	Mar	Apr	May	Jun	Jul	Aug	Sep	Oct	Nov	Dec	Jan
# Patient	162	171	169	168	168	169	172	172	167	168	172	170
# Individual Deaths	5	0	1	5	4	3	3	0	2	4	4	4



	Feb	Mar	Apr	May	Jun	Jul	Aug	Sep	Oct	Nov	Dec	Jan
# Patient	162	171	169	168	168	169	172	172	167	168	172	170
# Missed Treatments	183	150	174	187	166	177	189	157	197	171	204	168



	Feb	Mar	Apr	May	Jun	Jul	Aug	Sep	Oct	Nov	Dec	Jan
# Patient	162	171	169	168	168	169	172	172	167	168	172	170
# Transplants	0	0	0	0	0	1	0	0	0	0	0	0



Methodology: a) All labs for 'Adequacy of Dialysis', 'Nutrition', 'Osteodystrophy', 'Anemia' and 'Diabetes' based on last value of month; b) BP's and #L processed are average of all values for month; c) Access data takes last access of month; d) Values for SGA and 'Infection Control' use most recent result.