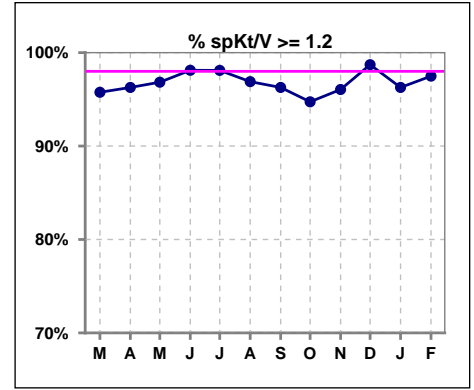
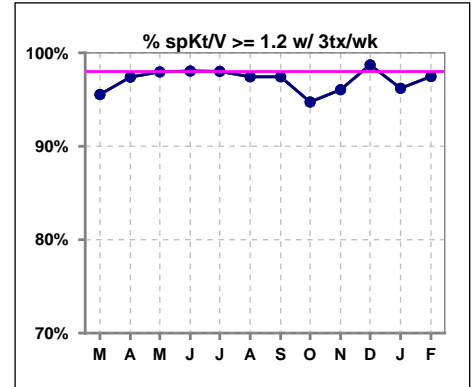


I. ADEQUACY OF DIALYSIS

	Mar	Apr	May	Jun	Jul	Aug	Sep	Oct	Nov	Dec	Jan	Feb
# spKt/V	165	161	158	159	158	161	161	152	152	155	161	159
# spKt/V >= 1.2	158	155	153	156	155	156	155	144	146	153	155	155
Pop. Mean	1.60	1.62	1.62	1.56	1.53	1.56	1.55	1.54	1.58	1.58	1.54	1.59
Std. Deviation	0.34	0.33	0.31	0.30	0.29	0.29	0.28	0.28	0.33	0.34	0.29	0.39
% spKt/V >= 1.2	96%	96%	97%	98%	98%	97%	96%	95%	96%	99%	96%	97%



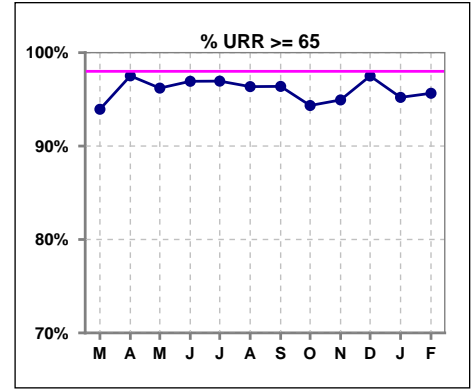
	Mar	Apr	May	Jun	Jul	Aug	Sep	Oct	Nov	Dec	Jan	Feb
# spKt/V w/ 3tx/wk	157	154	147	154	151	156	156	152	152	155	158	158
# spKt/V >= 1.2 w/3tx/wk	150	150	144	151	148	152	152	144	146	153	152	154
Pop. Mean	1.60	1.63	1.62	1.56	1.54	1.57	1.55	1.54	1.58	1.58	1.54	1.59
Std. Deviation	0.34	0.32	0.31	0.30	0.29	0.29	0.28	0.28	0.33	0.34	0.29	0.38
% >= 1.2 w/3tx/wk	96%	97%	98%	98%	98%	97%	97%	95%	96%	99%	96%	97%



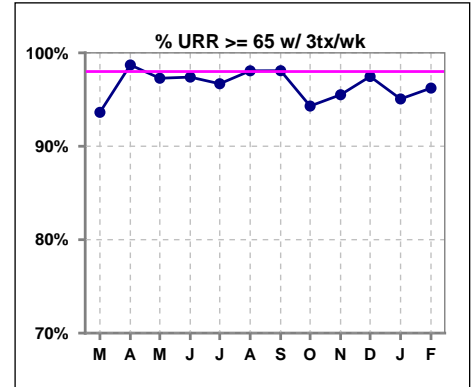
Methodology: a) All labs for 'Adequacy of Dialysis', 'Nutrition', 'Osteodystrophy', 'Anemia' and 'Diabetes' based on last value of month; b) BP's and #L processed are average of all values for month; c) Access data takes last access of month; d) Values for SGA and 'Infection Control' use most recent result.

I. ADEQUACY OF DIALYSIS - CONT.

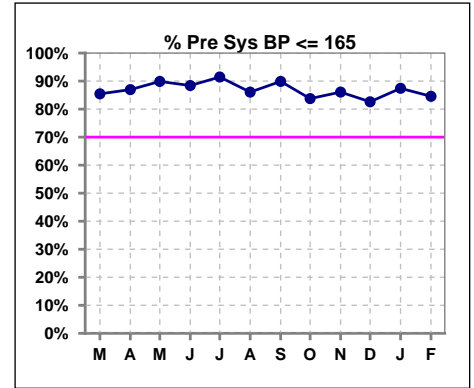
	Mar	Apr	May	Jun	Jul	Aug	Sep	Oct	Nov	Dec	Jan	Feb
# URR	165	161	158	163	164	165	166	159	158	160	167	161
# URR >= 65	155	157	152	158	159	159	160	150	150	156	159	154
Pop. Mean	74	75	75	74	73	74	74	74	74	74	74	74
Std. Deviation	6.55	6.08	5.93	6.61	6.64	6.04	5.90	6.11	6.42	6.61	6.06	6.13
% URR >= 65	94%	98%	96%	97%	97%	96%	96%	94%	95%	98%	95%	96%



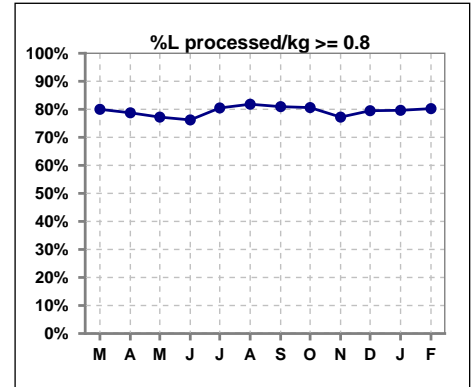
	Mar	Apr	May	Jun	Jul	Aug	Sep	Oct	Nov	Dec	Jan	Feb
# URR w/ 3tx/wk	157	154	147	154	151	156	157	158	156	158	162	159
# URR>=65 w/ 3tx/wk	147	152	143	150	146	153	154	149	149	154	154	153
Pop. Mean	74	75	75	74	74	74	74	74	74	74	74	74
Std. Deviation	6.57	5.72	5.81	6.55	6.69	5.91	5.66	6.10	6.37	6.56	5.99	6.03
% URR>=65 w/ 3tx/wk	94%	99%	97%	97%	97%	98%	98%	94%	96%	97%	95%	96%



	Mar	Apr	May	Jun	Jul	Aug	Sep	Oct	Nov	Dec	Jan	Feb
# Pre Sys BP	165	161	158	164	164	165	168	160	158	161	167	162
# Pre Sys BP <= 165	145	144	143	145	152	142	153	139	138	138	147	140
Pop. Mean	144	144	143	143	142	144	144	146	146	144	143	144
Std. Deviation	18.9	17.8	18.3	17.9	17.8	19.0	19.2	20.0	18.4	19.4	19.1	19.3
%Pre Sys BP <=165	85%	87%	90%	88%	91%	86%	90%	84%	86%	83%	87%	85%



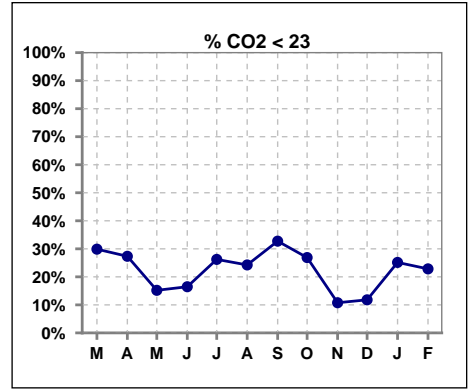
	Mar	Apr	May	Jun	Jul	Aug	Sep	Oct	Nov	Dec	Jan	Feb
# L processed/kg	165	160	158	164	164	165	168	160	158	161	167	162
# L processed/kg>=0.8	132	126	122	125	132	135	136	129	122	128	133	130
Pop. Mean	1	1	1	1	1	1	1	1	1	1	1	1
Std. Deviation	0.3	0.3	0.3	0.3	0.3	0.3	0.3	0.3	0.3	0.3	0.3	0.3
% L processed/kg>=0.8	80%	79%	77%	76%	80%	82%	81%	81%	77%	80%	80%	80%



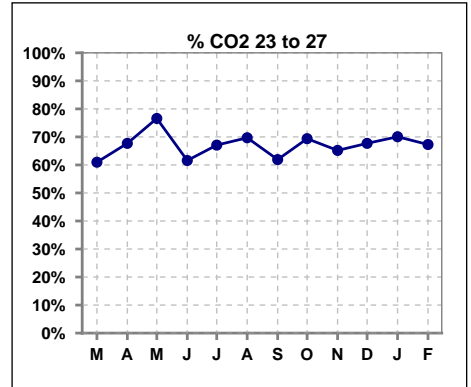
Methodology: a) All labs for 'Adequacy of Dialysis', 'Nutrition', 'Osteodystrophy', 'Anemia' and 'Diabetes' based on last value of month; b) BP's and #L processed are average of all values for month; c) Access data takes last access of month; d) Values for SGA and 'Infection Control' use most recent result.

I. ADEQUACY OF DIALYSIS - CONT.

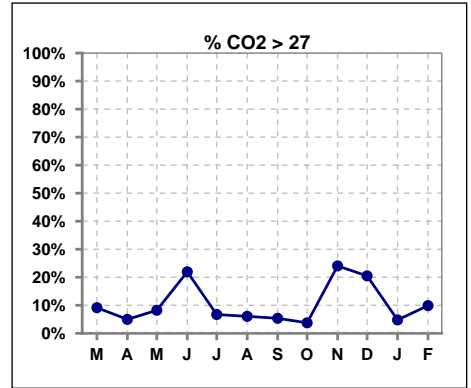
	Mar	Apr	May	Jun	Jul	Aug	Sep	Oct	Nov	Dec	Jan	Feb
# CO2	164	161	158	164	164	165	168	160	158	161	167	162
# CO2 < 23	49	44	24	27	43	40	55	43	17	19	42	37
Pop. Mean	24	24	24	25	24	24	23	24	26	25	24	24
Std. Deviation	2.75	2.23	2.43	2.90	2.61	2.58	2.90	2.60	2.80	2.71	2.47	2.85
% CO2 < 23	30%	27%	15%	16%	26%	24%	33%	27%	11%	12%	25%	23%



	Mar	Apr	May	Jun	Jul	Aug	Sep	Oct	Nov	Dec	Jan	Feb
# CO2	164	161	158	164	164	165	168	160	158	161	167	162
# CO2 23 to 27	100	109	121	101	110	115	104	111	103	109	117	109
Pop. Mean	24	24	24	25	24	24	23	24	26	25	24	24
Std. Deviation	2.75	2.23	2.43	2.90	2.61	2.58	2.90	2.60	2.80	2.71	2.47	2.85
% CO2 23 to 27	61%	68%	77%	62%	67%	70%	62%	69%	65%	68%	70%	67%



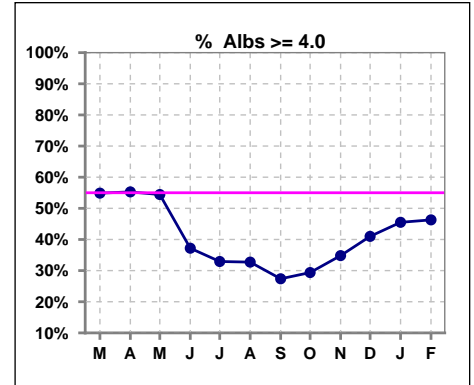
	Mar	Apr	May	Jun	Jul	Aug	Sep	Oct	Nov	Dec	Jan	Feb
# CO2	164	161	158	164	164	165	168	160	158	161	167	162
# CO2 > 27	15	8	13	36	11	10	9	6	38	33	8	16
Pop. Mean	24	24	24	25	24	24	23	24	26	25	24	24
Std. Deviation	2.75	2.23	2.43	2.90	2.61	2.58	2.90	2.60	2.80	2.71	2.47	2.85
% CO2 > 27	9%	5%	8%	22%	7%	6%	5%	4%	24%	20%	5%	10%



*Albumin values use BCG method - as of July 2001

II. NUTRITION

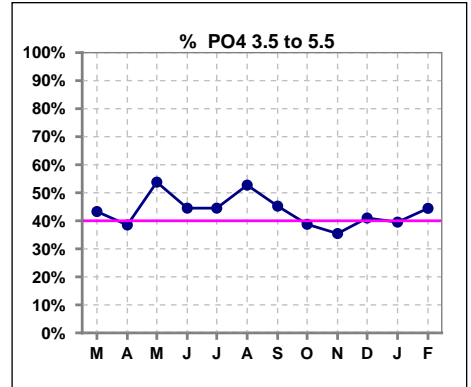
	Mar	Apr	May	Jun	Jul	Aug	Sep	Oct	Nov	Dec	Jan	Feb
# Albumin	164	161	158	164	164	165	168	160	158	161	167	162
# Albumin >= 4.0	90	89	86	61	54	54	46	47	55	66	76	75
Pop. Mean	3.9	3.9	3.9	3.8	3.7	3.8	3.7	3.8	3.8	3.8	3.8	3.9
Std. Deviation	0.34	0.33	0.34	0.37	0.40	0.39	0.42	0.37	0.37	0.43	0.42	0.40
% Alb >= 4.0	55%	55%	54%	37%	33%	33%	27%	29%	35%	41%	46%	46%



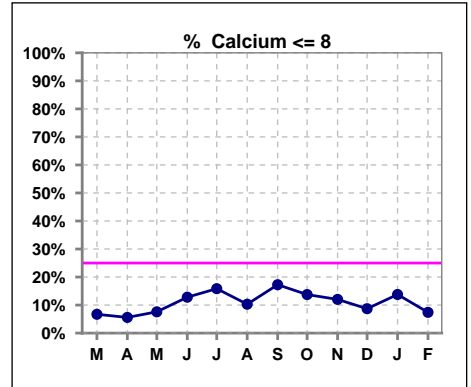
Lab methodology for PTH changed January 2012

III. OSTEODYSTROPHY

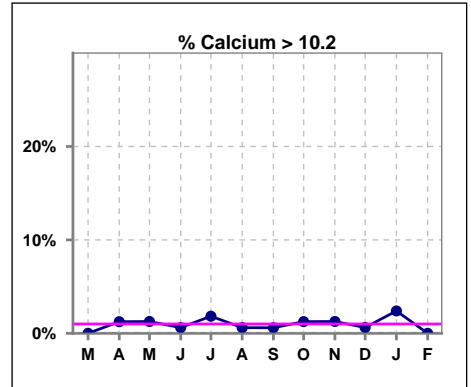
	Mar	Apr	May	Jun	Jul	Aug	Sep	Oct	Nov	Dec	Jan	Feb
# PO4	164	161	158	164	164	165	168	160	158	161	167	162
# PO4 3.5 to 5.5	71	62	85	73	73	87	76	62	56	66	66	72
Pop. Mean	5.8	5.6	5.7	5.9	5.7	5.5	5.7	5.8	5.9	6.0	6.1	5.7
Std. Deviation	1.98	1.79	1.80	1.93	1.58	1.52	1.65	1.69	1.67	2.06	2.04	1.74
% PO4 3.5 to 5.5	43%	39%	54%	45%	45%	53%	45%	39%	35%	41%	40%	44%



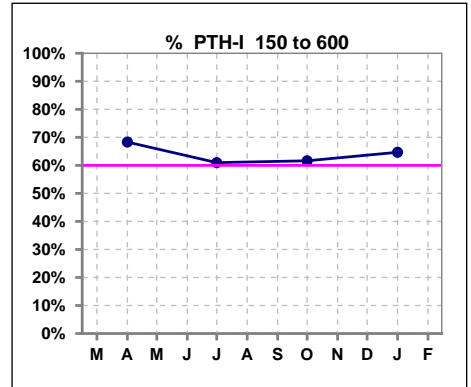
	Mar	Apr	May	Jun	Jul	Aug	Sep	Oct	Nov	Dec	Jan	Feb
# Calcium	164	161	158	164	164	165	168	160	158	161	167	162
# Calcium <= 8	11	9	12	21	26	17	29	22	19	14	23	12
Pop. Mean	9.0	9.0	9.0	8.8	8.8	8.8	8.7	8.8	8.8	8.8	8.9	9.0
Std. Deviation	0.70	0.68	0.74	0.81	0.84	0.74	0.76	0.77	0.79	0.68	0.76	0.64
% Calcium <= 8	7%	6%	8%	13%	16%	10%	17%	14%	12%	9%	14%	7%



	Mar	Apr	May	Jun	Jul	Aug	Sep	Oct	Nov	Dec	Jan	Feb
# Calcium	164	161	158	164	164	165	168	160	158	161	167	162
# Calcium > 10.2	0	2	2	1	3	1	1	2	2	1	4	0
Pop. Mean	9.0	9.0	9.0	8.8	8.8	8.8	8.7	8.8	8.8	8.8	8.9	9.0
Std. Deviation	0.70	0.68	0.74	0.81	0.84	0.74	0.76	0.77	0.79	0.68	0.76	0.64
% Calcium > 10.2	0%	1%	1%	1%	2%	1%	1%	1%	1%	1%	2%	0%



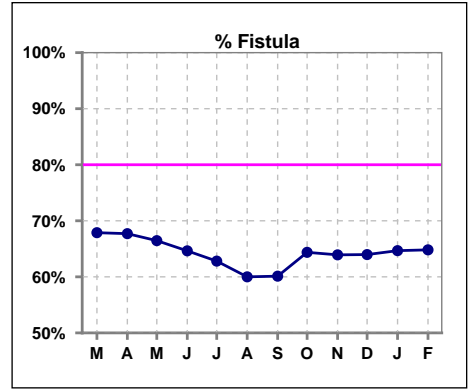
	Mar	Apr	May	Jun	Jul	Aug	Sep	Oct	Nov	Dec	Jan	Feb
# PTH-I		161			164			159			167	
# PTH-I 150 to 600		110			100			98			108	
Pop. Mean		461			565			540			481	
Std. Deviation		384			438			381			340	
% PTH-I 150 to 600		68%			61%			62%			65%	



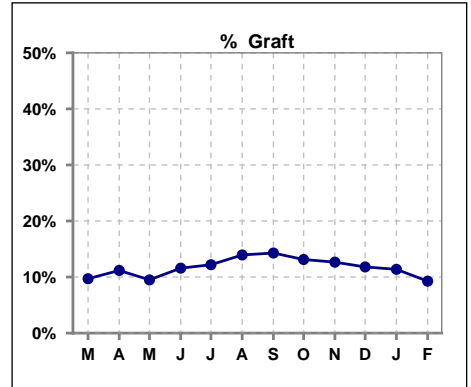
Methodology: a) All labs for 'Adequacy of Dialysis', 'Nutrition', 'Osteodystrophy', 'Anemia' and 'Diabetes' based on last value of month; b) BP's and #L processed are average of all values for month; c) Access data takes last access of month; d) Values for SGA and 'Infection Control' use most recent result.

IV. ACCESS

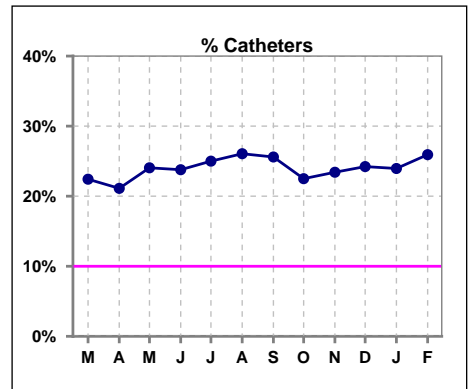
	Mar	Apr	May	Jun	Jul	Aug	Sep	Oct	Nov	Dec	Jan	Feb
# Access	165	161	158	164	164	165	168	160	158	161	167	162
# Fistula	112	109	105	106	103	99	101	103	101	103	108	105
% Fistula	68%	68%	66%	65%	63%	60%	60%	64%	64%	64%	65%	65%



	Mar	Apr	May	Jun	Jul	Aug	Sep	Oct	Nov	Dec	Jan	Feb
# Access	165	161	158	164	164	165	168	160	158	161	167	162
# Graft	16	18	15	19	20	23	24	21	20	19	19	15
% Graft	10%	11%	9%	12%	12%	14%	14%	13%	13%	12%	11%	9%



	Mar	Apr	May	Jun	Jul	Aug	Sep	Oct	Nov	Dec	Jan	Feb
# Access	165	161	158	164	164	165	168	160	158	161	167	162
# Catheters	37	34	38	39	41	43	43	36	37	39	40	42
% Catheters	22%	21%	24%	24%	25%	26%	26%	23%	23%	24%	24%	26%



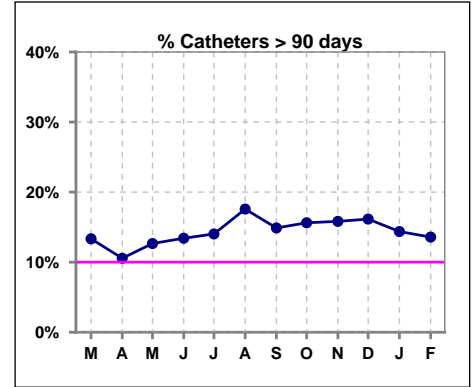
Methodology: a) All labs for 'Adequacy of Dialysis', 'Nutrition', 'Osteodystrophy', 'Anemia' and 'Diabetes' based on last value of month; b) BP's and #L processed are average of all values for month; c) Access data takes last access of month; d) Values for SGA and 'Infection Control' use most recent result.

IV. ACCESS - CONT.

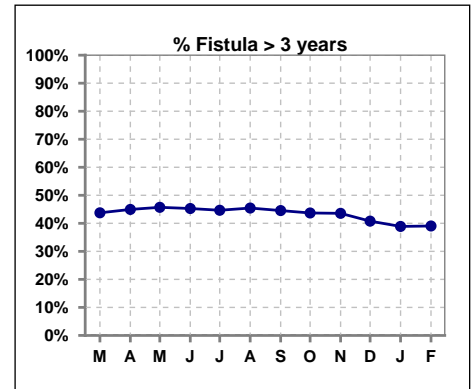
Catheters > 90 days

	Mar	Apr	May	Jun	Jul	Aug	Sep	Oct	Nov	Dec	Jan	Feb
# Access	165	161	158	164	164	165	168	160	158	161	167	162
# Catheters	22	17	20	22	23	29	25	25	25	26	24	22
% Catheters	13%	11%	13%	13%	14%	18%	15%	16%	16%	16%	14%	14%

Definition: Catheter in use on last treatment of the month



	Mar	Apr	May	Jun	Jul	Aug	Sep	Oct	Nov	Dec	Jan	Feb
# Fistula	112	109	105	106	103	99	101	103	101	103	108	105
# Fistula > 3 yrs	49	49	48	48	46	45	45	45	44	42	42	41
% Fistula > 3 yrs	44%	45%	46%	45%	45%	45%	45%	44%	44%	41%	39%	39%

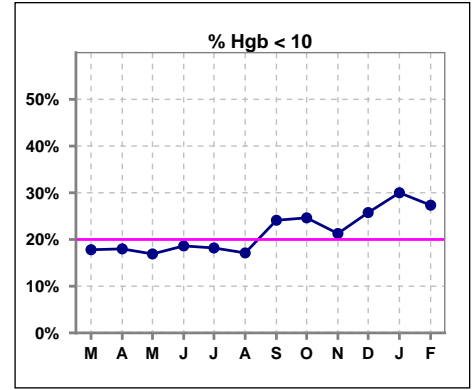


Methodology: a) All labs for 'Adequacy of Dialysis', 'Nutrition', 'Osteodystrophy', 'Anemia' and 'Diabetes' based on last value of month; b) BP's and #L processed are average of all values for month; c) Access data takes last access of month; d) Values for SGA and 'Infection Control' use most recent result.

V. ANEMIA

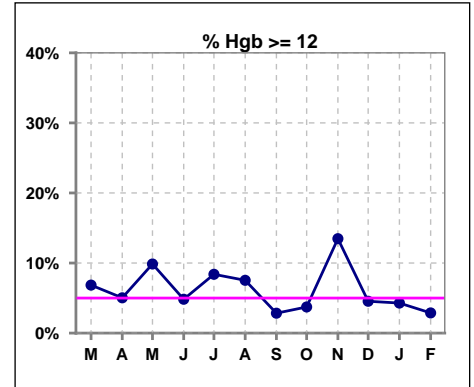
	Mar	Apr	May	Jun	Jul	Aug	Sep	Oct	Nov	Dec	Jan	Feb
# Hgb	146	139	142	145	143	146	141	134	141	132	140	139
# Hgb < 10	26	25	24	27	26	25	34	33	30	34	42	38
Pop. Mean	10.7	10.7	10.8	10.7	10.7	10.7	10.5	10.5	10.9	10.5	10.4	10.4
Std. Deviation	1.3	1.1	1.1	1.1	1.2	1.2	1.2	1.2	1.3	1.4	1.4	1.2
% Hgb < 10	18%	18%	17%	19%	18%	17%	24%	25%	21%	26%	30%	27%

Note: Excludes patients who received no ESA in month.



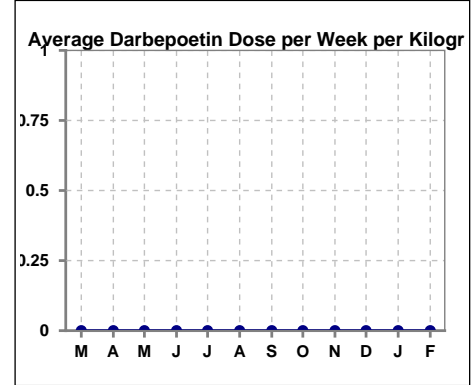
	Mar	Apr	May	Jun	Jul	Aug	Sep	Oct	Nov	Dec	Jan	Feb
# Hgb	146	139	142	145	143	146	141	134	141	132	140	139
# Hgb >= 12	10	7	14	7	12	11	4	5	19	6	6	4
Pop. Mean	10.7	10.7	10.8	10.7	10.7	10.7	10.5	10.5	10.9	10.5	10.4	10.4
Std. Deviation	1.3	1.1	1.1	1.1	1.2	1.2	1.2	1.2	1.3	1.4	1.4	1.2
% Hgb >= 12	7%	5%	10%	5%	8%	8%	3%	4%	13%	5%	4%	3%

Note: Excludes patients who received no ESA in month.



Average Darbepoetin Dose per Week per Kilogram

	Mar	Apr	May	Jun	Jul	Aug	Sep	Oct	Nov	Dec	Jan	Feb
# Average Darbepoetin	0	0	0	0	0	0	0	0	0	0	0	0

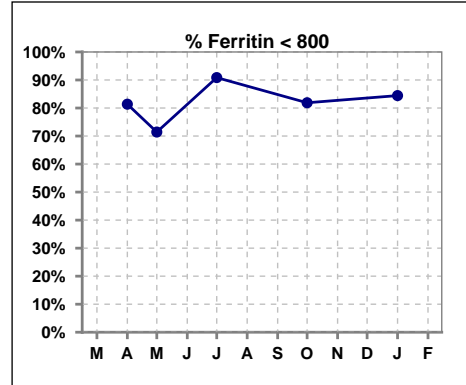


Methodology: a) All labs for 'Adequacy of Dialysis', 'Nutrition', 'Osteodystrophy', 'Anemia' and 'Diabetes' based on last value of month; b) BP's and #L processed are average of all values for month; c) Access data takes last access of month; d) Values for SGA and 'Infection Control' use most recent result.

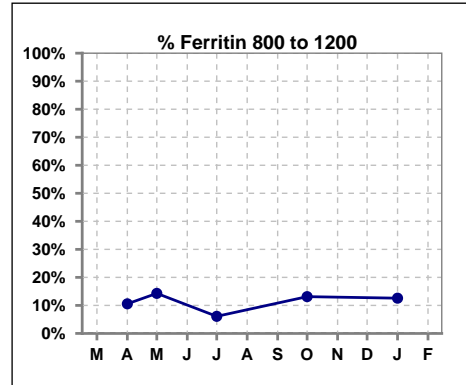
V. ANEMIA - CONT.

Iron Profile

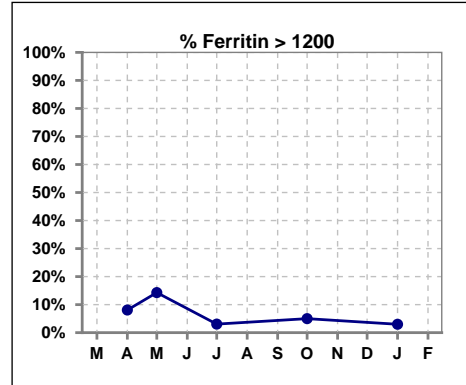
	Mar	Apr	May	Jun	Jul	Aug	Sep	Oct	Nov	Dec	Jan	Feb
# Ferritin		161	7		164			160			167	
# Ferritin < 800		131	5		149			131			141	
Pop. Mean		471	466		404			491			460	
Std. Deviation		407	447		315			357			346	
% Ferritin < 800		81%	71%		91%			82%			84%	



	Mar	Apr	May	Jun	Jul	Aug	Sep	Oct	Nov	Dec	Jan	Feb
# Ferritin		161	7		164			160			167	
# Ferritin 800 to 1200		17	1		10			21			21	
Pop. Mean		471	466		404			491			460	
Std. Deviation		407	447		315			357			346	
% Ferritin 800 to 1200		11%	14%		6%			13%			13%	

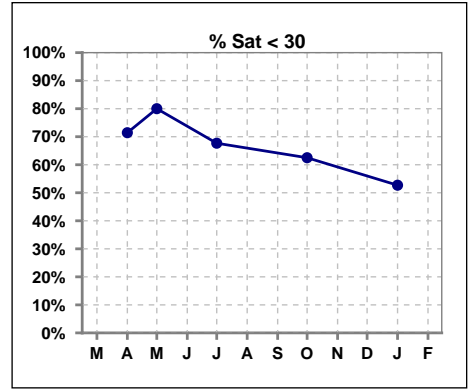


	Mar	Apr	May	Jun	Jul	Aug	Sep	Oct	Nov	Dec	Jan	Feb
# Ferritin		161	7		164			160			167	
# Ferritin > 1200		13	1		5			8			5	
Pop. Mean		471	466		404			491			460	
Std. Deviation		407	447		315			357			346	
% Ferritin > 1200		8%	14%		3%			5%			3%	

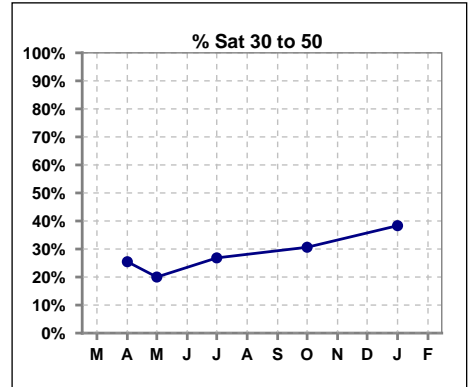


V. ANEMIA - CONT.

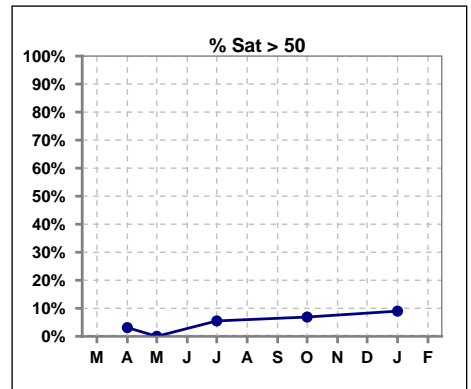
	Mar	Apr	May	Jun	Jul	Aug	Sep	Oct	Nov	Dec	Jan	Feb
# % Sat		161	10		164			160			167	
# % Sat < 30		115	8		111			100			88	
Pop. Mean		25	22		28			28			31	
Std. Deviation		15	9		15			13			15	
% % Sat < 30		71%	80%		68%			63%			53%	



	Mar	Apr	May	Jun	Jul	Aug	Sep	Oct	Nov	Dec	Jan	Feb
# % Sat		161	10		164			160			167	
# % Sat 30 to 50		41	2		44			49			64	
Pop. Mean		25	22		28			28			31	
Std. Deviation		15	9		15			13			15	
% % Sat 30 to 50		25%	20%		27%			31%			38%	



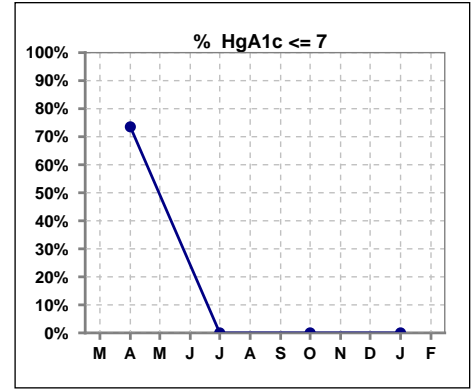
	Mar	Apr	May	Jun	Jul	Aug	Sep	Oct	Nov	Dec	Jan	Feb
# % Sat		161	10		164			160			167	
# % Sat > 50		5	0		9			11			15	
Pop. Mean		25	22		28			28			31	
Std. Deviation		15	9		15			13			15	
% % Sat > 50		3%	0%		5%			7%			9%	



Methodology: a) All labs for 'Adequacy of Dialysis', 'Nutrition', 'Osteodystrophy', 'Anemia' and 'Diabetes' based on last value of month; b) BP's and #L processed are average of all values for month; c) Access data takes last access of month; d) Values for SGA and 'Infection Control' use most recent result.

VI. Diabetes

	Mar	Apr	May	Jun	Jul	Aug	Sep	Oct	Nov	Dec	Jan	Feb
# HgA1c		102			0			0			0	
# HgA1c <= 7		75			0			0			0	
Pop. Mean		6.3			0			0			0	
Std. Deviation		1.53			0			0			0	
% HgA1c <= 7		74%			0%			0%			0%	

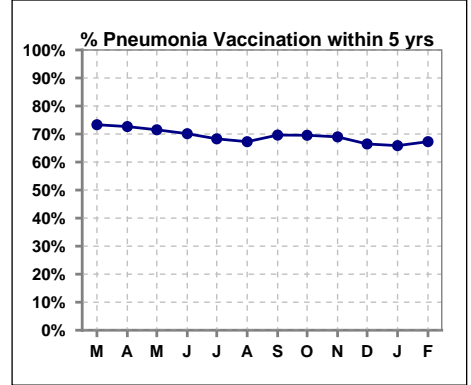


Methodology: a) All labs for 'Adequacy of Dialysis', 'Nutrition', 'Osteodystrophy', 'Anemia' and 'Diabetes' based on last value of month; b) BP's and #L processed are average of all values for month; c) Access data takes last access of month; d) Values for SGA and 'Infection Control' use most recent result.

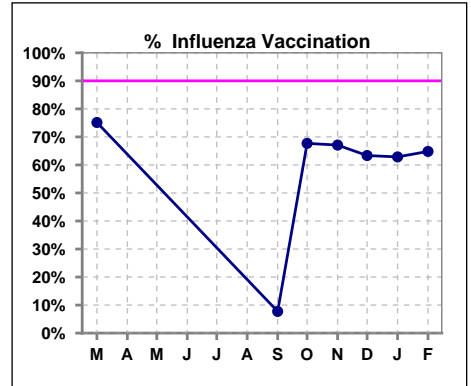
VII. Infection Control

Pneumonia vaccination within the past five years

	Mar	Apr	May	Jun	Jul	Aug	Sep	Oct	Nov	Dec	Jan	Feb
# Patient	165	161	158	164	164	165	168	161	158	161	167	162
# Pneumonia	121	117	113	115	112	111	117	112	109	107	110	109
% Pneumonia	73%	73%	72%	70%	68%	67%	70%	70%	69%	66%	66%	67%



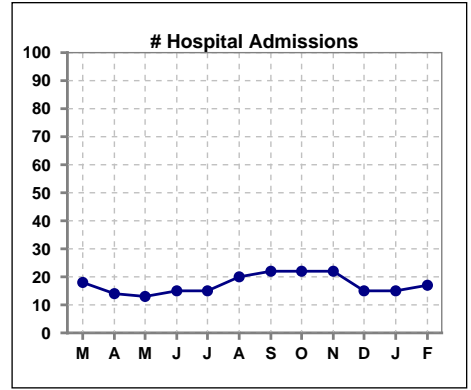
	Mar	Apr	May	Jun	Jul	Aug	Sep	Oct	Nov	Dec	Jan	Feb
# Patient	165						168	161	158	161	167	162
# Influenza	124						13	109	106	102	105	105
% Influenza	75%						8%	68%	67%	63%	63%	65%



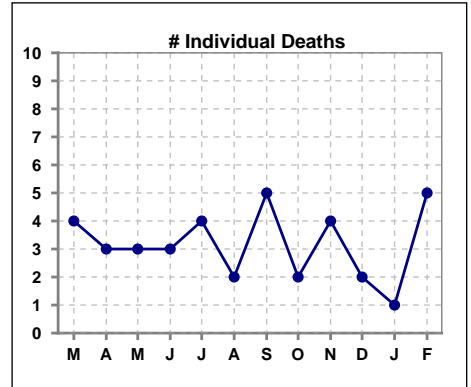
Methodology: a) All labs for 'Adequacy of Dialysis', 'Nutrition', 'Osteodystrophy', 'Anemia' and 'Diabetes' based on last value of month; b) BP's and #L processed are average of all values for month; c) Access data takes last access of month; d) Values for SGA and 'Infection Control' use most recent result.

VIII. Outcome measures

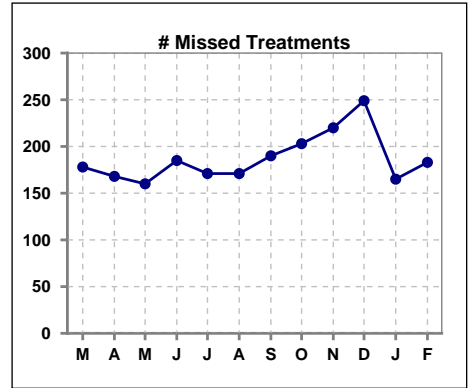
	Mar	Apr	May	Jun	Jul	Aug	Sep	Oct	Nov	Dec	Jan	Feb
# Patient	165	161	158	164	164	165	168	161	158	161	167	162
# Hospital Admissions	18	14	13	15	15	20	22	22	22	15	15	17



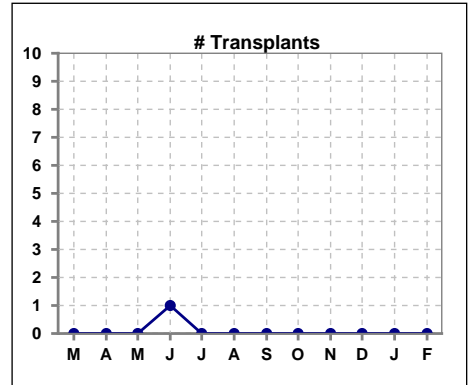
	Mar	Apr	May	Jun	Jul	Aug	Sep	Oct	Nov	Dec	Jan	Feb
# Patient	165	161	158	164	164	165	168	161	158	161	167	162
# Individual Deaths	4	3	3	3	4	2	5	2	4	2	1	5



	Mar	Apr	May	Jun	Jul	Aug	Sep	Oct	Nov	Dec	Jan	Feb
# Patient	165	161	158	164	164	165	168	161	158	161	167	162
# Missed Treatments	178	168	160	185	171	171	190	203	220	249	165	183



	Mar	Apr	May	Jun	Jul	Aug	Sep	Oct	Nov	Dec	Jan	Feb
# Patient	165	161	158	164	164	165	168	161	158	161	167	162
# Transplants	0	0	0	1	0	0	0	0	0	0	0	0



Methodology: a) All labs for 'Adequacy of Dialysis', 'Nutrition', 'Osteodystrophy', 'Anemia' and 'Diabetes' based on last value of month; b) BP's and #L processed are average of all values for month; c) Access data takes last access of month; d) Values for SGA and 'Infection Control' use most recent result.