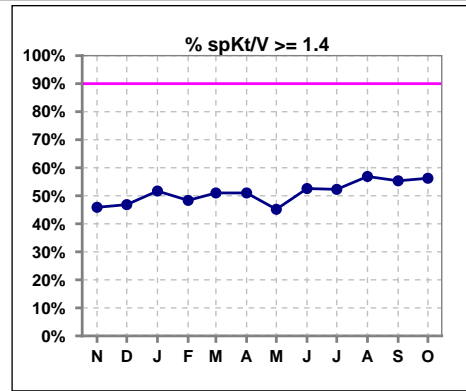
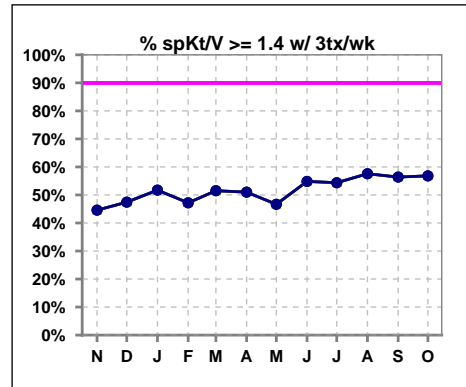


**I. ADEQUACY OF DIALYSIS**

	Nov	Dec	Jan	Feb	Mar	Apr	May	Jun	Jul	Aug	Sep	Oct
# spKt/V	85	79	89	91	100	100	93	97	109	109	103	96
# spKt/V >= 1.4	39	37	46	44	51	51	42	51	57	62	57	54
Pop. Mean	1.36	1.40	1.43	1.43	1.40	1.47	1.40	1.45	1.43	1.46	1.44	1.46
Std. Deviation	0.32	0.43	0.53	0.44	0.37	0.46	0.37	0.36	0.37	0.39	0.35	0.32
% spKt/V >= 1.4	46%	47%	52%	48%	51%	51%	45%	53%	52%	57%	55%	56%
% spKt/V >= 1.2	71%	73%	63%	71%	71%	73%	62%	71%	78%	82%	79%	84%

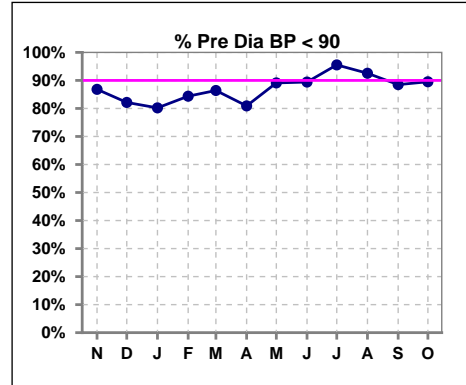


	Nov	Dec	Jan	Feb	Mar	Apr	May	Jun	Jul	Aug	Sep	Oct
# spKt/V w/ 3tx/wk	83	78	87	89	99	100	90	93	103	99	94	88
# spKt/V >= 1.4 w/3tx/wk	37	37	45	42	51	51	42	51	56	57	53	50
Pop. Mean	1.36	1.40	1.44	1.43	1.40	1.47	1.41	1.47	1.44	1.48	1.46	1.47
Std. Deviation	0.32	0.43	0.54	0.44	0.37	0.46	0.37	0.35	0.38	0.36	0.33	0.28
% spKt/V >= 1.4 w/3tx/wk	45%	47%	52%	47%	52%	51%	47%	55%	54%	58%	56%	57%

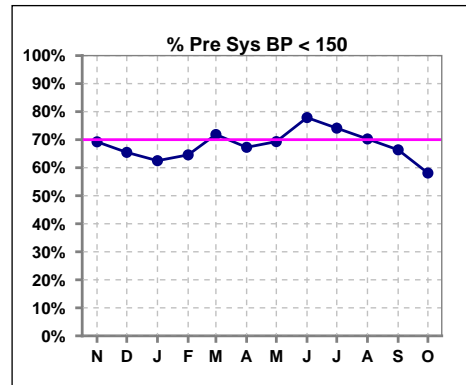


**Blood Pressure Control (Pre)**

	Nov	Dec	Jan	Feb	Mar	Apr	May	Jun	Jul	Aug	Sep	Oct
# Pre Dia BP	91	84	96	96	103	110	101	104	112	121	113	105
# Pre Dia BP < 90	79	69	77	81	89	89	90	93	107	112	100	94
Pop. Mean	74	75	77	76	75	75	73	71	70	73	74	76
Std. Deviation	14.5	14.1	14.7	13.1	13.3	13.7	11.9	12.6	12.3	11.7	12.1	12.0
% Pre Dia BP < 90	87%	82%	80%	84%	86%	81%	89%	89%	96%	93%	88%	90%



	Nov	Dec	Jan	Feb	Mar	Apr	May	Jun	Jul	Aug	Sep	Oct
# Pre Sys BP	91	84	96	96	103	110	101	104	112	121	113	105
# Pre Sys BP < 150	63	55	60	62	74	74	70	81	83	85	75	61
Pop. Mean	140	140	142	141	141	142	138	136	135	139	142	146
Std. Deviation	23.0	20.6	22.4	19.4	19.2	21.5	20.4	20.8	21.5	19.9	20.8	21.1
% Pre Sys BP < 150	69%	65%	63%	65%	72%	67%	69%	78%	74%	70%	66%	58%

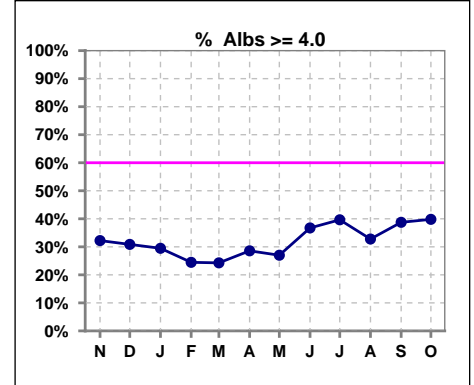


Methodology: a) All labs for 'Adequacy of Dialysis', 'Nutrition', 'Osteodystrophy', 'Anemia' and 'Diabetes' based on last value of month; b) BP's and #L processed are average of all values for month; c) Access data takes last access of month; d) Values for SGA and 'Infection Control' use most recent result.

\*Albumin values use BCG method - as of July 2001

**II. NUTRITION**

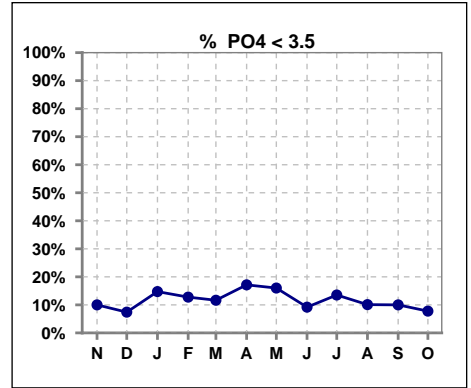
	Nov	Dec	Jan	Feb	Mar	Apr	May	Jun	Jul	Aug	Sep	Oct
# Albumin	90	81	95	94	103	105	100	98	111	119	111	103
# Albumin >= 4.0	29	25	28	23	25	30	27	36	44	39	43	41
Pop. Mean	3.7	3.7	3.7	3.6	3.6	3.7	3.6	3.8	3.7	3.7	3.7	3.8
Std. Deviation	0.54	0.45	0.44	0.54	0.48	0.48	0.47	0.40	0.48	0.46	0.49	0.48
% Alb >= 3.5	76%	79%	72%	69%	70%	76%	70%	85%	73%	74%	77%	78%
% Alb >= 3.0	92%	95%	94%	90%	90%	91%	93%	96%	94%	94%	91%	92%
<b>% Alb &gt;= 4.0</b>	<b>32%</b>	<b>31%</b>	<b>29%</b>	<b>24%</b>	<b>24%</b>	<b>29%</b>	<b>27%</b>	<b>37%</b>	<b>40%</b>	<b>33%</b>	<b>39%</b>	<b>40%</b>



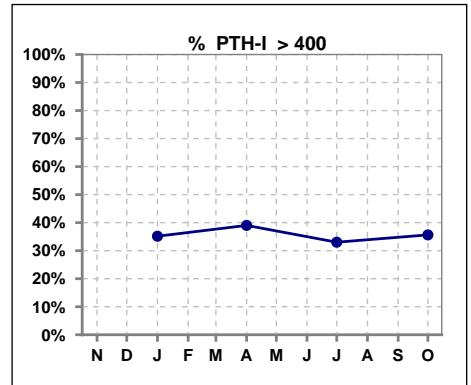
Methodology: a) All labs for 'Adequacy of Dialysis', 'Nutrition', 'Osteodystrophy', 'Anemia' and 'Diabetes' based on last value of month; b) BP's and #L processed are average of all values for month; c) Access data takes last access of month; d) Values for SGA and 'Infection Control' use most recent result.

**III. OSTEODYSTROPHY**

	Nov	Dec	Jan	Feb	Mar	Apr	May	Jun	Jul	Aug	Sep	Oct
# PO4	90	81	95	94	103	105	100	98	111	119	110	103
# PO4 < 3.5	9	6	14	12	12	18	16	9	15	12	11	8
Pop. Mean	5.2	5.4	5.2	5.1	5.2	5.3	5.0	5.2	5.3	5.1	5.3	5.2
Std. Deviation	1.37	1.55	1.69	1.75	1.60	2.01	1.75	1.52	1.82	1.61	1.60	1.19
<b>% PO4 &lt; 3.5</b>	<b>10%</b>	<b>7%</b>	<b>15%</b>	<b>13%</b>	<b>12%</b>	<b>17%</b>	<b>16%</b>	<b>9%</b>	<b>14%</b>	<b>10%</b>	<b>10%</b>	<b>8%</b>

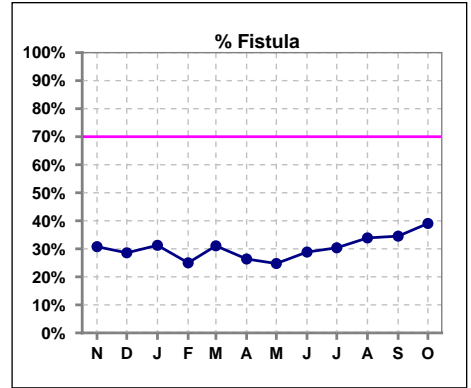


	Nov	Dec	Jan	Feb	Mar	Apr	May	Jun	Jul	Aug	Sep	Oct
# PTH-I			91			82			109			87
# PTH-I > 400			32			32			36			31
Pop. Mean			464			465			405			412
Std. Deviation			608			491			415			608
<b>% PTH-I &gt; 400</b>			<b>35%</b>			<b>39%</b>			<b>33%</b>			<b>36%</b>

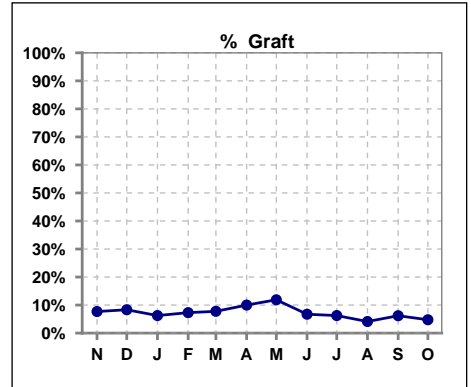


**IV. ACCESS**

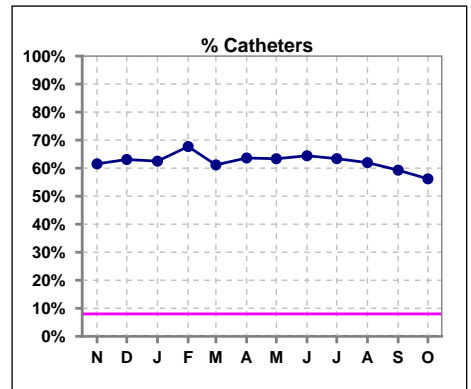
	Nov	Dec	Jan	Feb	Mar	Apr	May	Jun	Jul	Aug	Sep	Oct
# Access	91	84	96	96	103	110	101	104	112	121	113	105
# Fistula	28	24	30	24	32	29	25	30	34	41	39	41
% Fistula	31%	29%	31%	25%	31%	26%	25%	29%	30%	34%	35%	39%



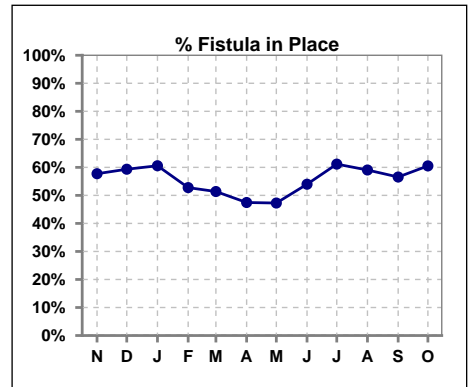
	Nov	Dec	Jan	Feb	Mar	Apr	May	Jun	Jul	Aug	Sep	Oct
# Access	91	84	96	96	103	110	101	104	112	121	113	105
# Graft	7	7	6	7	8	11	12	7	7	5	7	5
% Graft	8%	8%	6%	7%	8%	10%	12%	7%	6%	4%	6%	5%



	Nov	Dec	Jan	Feb	Mar	Apr	May	Jun	Jul	Aug	Sep	Oct
# Access	91	84	96	96	103	110	101	104	112	121	113	105
# Catheters	56	53	60	65	63	70	64	67	71	75	67	59
% Catheters	62%	63%	63%	68%	61%	64%	63%	64%	63%	62%	59%	56%

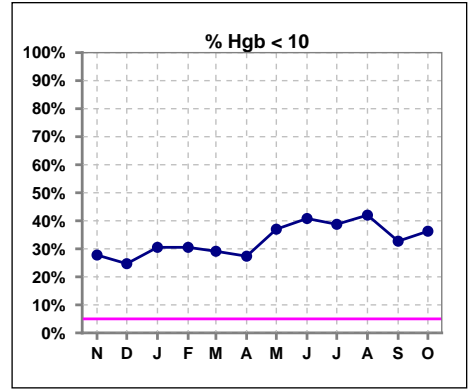


	Nov	Dec	Jan	Feb	Mar	Apr	May	Jun	Jul	Aug	Sep	Oct
# Patient	97	91	104	108	109	118	110	113	121	127	122	114
# Fistula in Place	56	54	63	57	56	56	52	61	74	75	69	69
% Fistula in Place	58%	59%	61%	53%	51%	47%	47%	54%	61%	59%	57%	61%



**V. ANEMIA**

	Nov	Dec	Jan	Feb	Mar	Apr	May	Jun	Jul	Aug	Sep	Oct
# Hgb	90	81	95	95	103	106	100	98	111	119	110	102
# Hgb < 10	25	20	29	29	30	29	37	40	43	50	36	37
Pop. Mean	11.2	11.1	10.8	11.0	10.8	11.0	10.5	10.3	10.2	10.3	10.6	10.5
Std. Deviation	1.8	1.8	1.8	1.9	1.5	1.9	1.6	1.5	1.4	1.3	1.4	1.5
<b>% Hgb &lt; 10</b>	<b>28%</b>	<b>25%</b>	<b>31%</b>	<b>31%</b>	<b>29%</b>	<b>27%</b>	<b>37%</b>	<b>41%</b>	<b>39%</b>	<b>42%</b>	<b>33%</b>	<b>36%</b>



	Nov	Dec	Jan	Feb	Mar	Apr	May	Jun	Jul	Aug	Sep	Oct
# Hgb	90	81	95	95	103	106	100	98	111	119	110	102
# Hgb > 12	31	24	26	29	22	39	16	12	12	13	18	14
Pop. Mean	11.2	11.1	10.8	11.0	10.8	11.0	10.5	10.3	10.2	10.3	10.6	10.5
Std. Deviation	1.8	1.8	1.8	1.9	1.5	1.9	1.6	1.5	1.4	1.3	1.4	1.5
<b>% Hgb &gt; 12</b>	<b>34%</b>	<b>30%</b>	<b>27%</b>	<b>31%</b>	<b>21%</b>	<b>37%</b>	<b>16%</b>	<b>12%</b>	<b>11%</b>	<b>11%</b>	<b>16%</b>	<b>14%</b>

