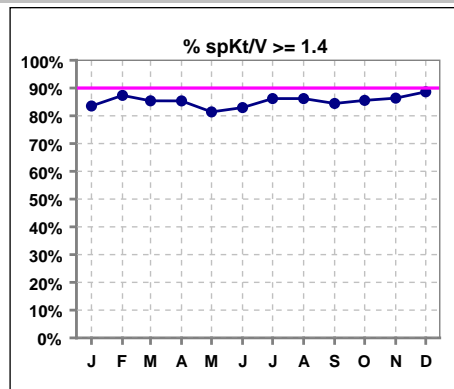
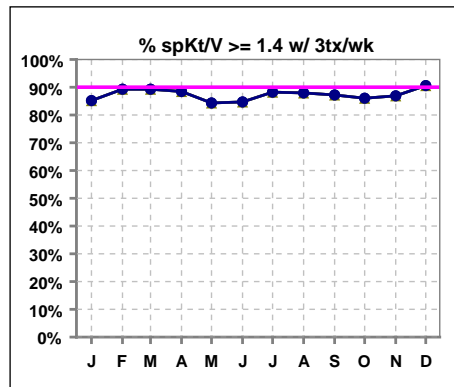


I. ADEQUACY OF DIALYSIS

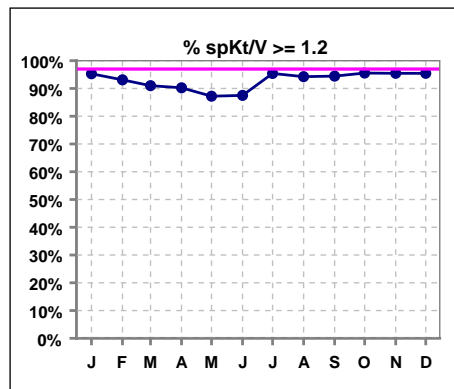
	Jan	Feb	Mar	Apr	May	Jun	Jul	Aug	Sep	Oct	Nov	Dec
# spKt/V	85	87	89	82	86	88	87	87	90	90	88	88
# spKt/V >= 1.4	71	76	76	70	70	73	75	75	76	77	76	78
Pop. Mean	1.64	1.65	1.62	1.61	1.62	1.62	1.65	1.66	1.65	1.65	1.65	1.67
Std. Deviation	0.31	0.30	0.29	0.29	0.30	0.34	0.26	0.27	0.30	0.28	0.24	0.28
% spKt/V >= 1.4	84%	87%	85%	85%	81%	83%	86%	86%	84%	86%	86%	89%



	Jan	Feb	Mar	Apr	May	Jun	Jul	Aug	Sep	Oct	Nov	Dec
# spKt/V w/ 3tx/wk	81	84	84	78	83	85	85	83	86	86	84	85
# spKt/V >= 1.4 w/3tx/wk	69	75	75	69	70	72	75	73	75	74	73	77
Pop. Mean	1.64	1.66	1.64	1.63	1.63	1.64	1.66	1.68	1.66	1.66	1.66	1.67
Std. Deviation	0.32	0.30	0.28	0.28	0.29	0.32	0.25	0.26	0.29	0.28	0.23	0.26
% >= 1.4 w/3tx/wk	85%	89%	89%	88%	84%	85%	88%	88%	87%	86%	87%	91%

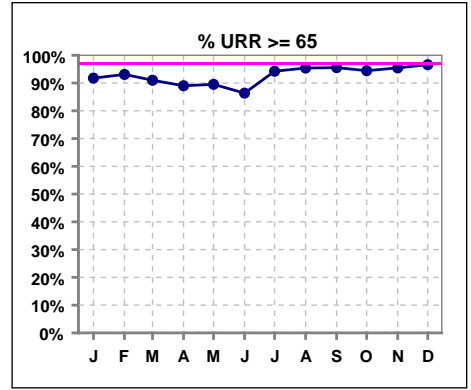


	Jan	Feb	Mar	Apr	May	Jun	Jul	Aug	Sep	Oct	Nov	Dec
# spKt/V	85	87	89	82	86	88	87	87	90	90	88	88
# spKt/V >= 1.2	81	81	81	74	75	77	83	82	85	86	84	84
Pop. Mean	1.64	1.65	1.62	1.61	1.62	1.62	1.65	1.66	1.65	1.65	1.65	1.67
Std. Deviation	0.31	0.30	0.29	0.29	0.30	0.34	0.26	0.27	0.30	0.28	0.24	0.28
% spKt/V >= 1.2	95%	93%	91%	90%	87%	88%	95%	94%	94%	96%	95%	95%

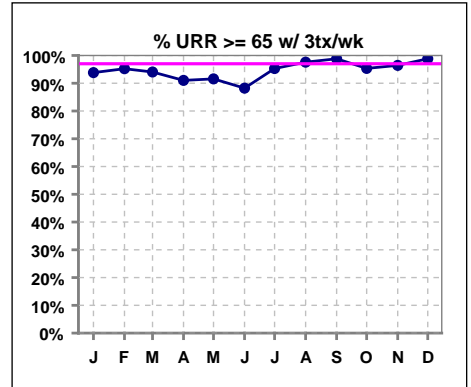


I. ADEQUACY OF DIALYSIS - CONT.

	Jan	Feb	Mar	Apr	May	Jun	Jul	Aug	Sep	Oct	Nov	Dec
# URR	85	87	89	82	86	88	87	87	90	90	88	88
# URR >= 65	78	81	81	73	77	76	82	83	86	85	84	85
Pop. Mean	74	75	75	74	75	74	75	76	75	75	76	76
Std. Deviation	8.70	7.42	6.36	6.41	6.72	7.83	5.75	5.67	6.46	5.80	5.09	5.73
% URR >= 65	92%	93%	91%	89%	90%	86%	94%	95%	96%	94%	95%	97%



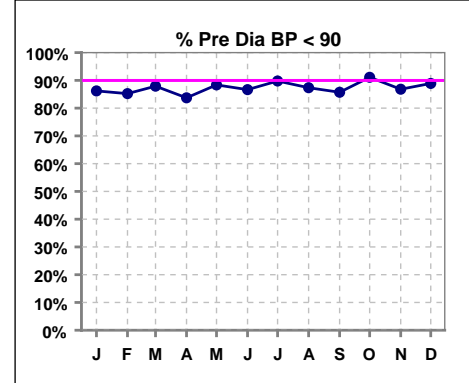
	Jan	Feb	Mar	Apr	May	Jun	Jul	Aug	Sep	Oct	Nov	Dec
# URR w/ 3tx/wk	81	84	84	78	83	85	85	83	84	86	84	85
# URR>=65 w/ 3tx/wk	76	80	79	71	76	75	81	81	83	82	81	84
Pop. Mean	75	76	75	75	75	75	76	76	76	76	76	76
Std. Deviation	8.45	6.81	5.79	6.10	6.32	7.27	5.36	5.13	5.13	5.49	4.84	5.24
% URR>=65 w/ 3tx/wk	94%	95%	94%	91%	92%	88%	95%	98%	99%	95%	96%	99%



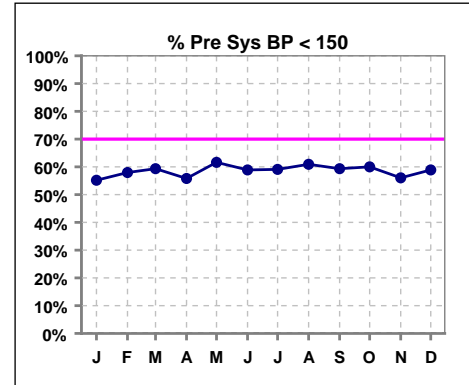
I. ADEQUACY OF DIALYSIS - CONT.

Blood Pressure Control (Pre)

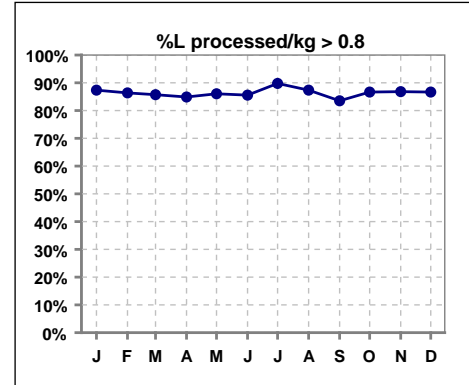
	Jan	Feb	Mar	Apr	May	Jun	Jul	Aug	Sep	Oct	Nov	Dec
# Pre Dia BP	87	88	91	86	86	90	88	87	91	90	91	90
# Pre Dia BP < 90	75	75	80	72	76	78	79	76	78	82	79	80
Pop. Mean	73	74	74	75	74	73	72	74	74	74	74	72
Std. Deviation	13.9	13.8	13.5	14.6	12.8	13.8	13.9	13.0	13.1	12.6	13.4	14.5
% Pre Dia BP < 90	86%	85%	88%	84%	88%	87%	90%	87%	86%	91%	87%	89%



	Jan	Feb	Mar	Apr	May	Jun	Jul	Aug	Sep	Oct	Nov	Dec
# Pre Sys BP	87	88	91	86	86	90	88	87	91	90	91	90
# Pre Sys BP < 150	48	51	54	48	53	53	52	53	54	54	51	53
Pop. Mean	147	146	145	147	145	143	143	143	143	143	144	143
Std. Deviation	23.6	22.1	23.4	23.2	20.2	20.5	22.1	21.0	20.8	20.1	20.5	20.9
%Pre Sys BP <150	55%	58%	59%	56%	62%	59%	59%	61%	59%	60%	56%	59%

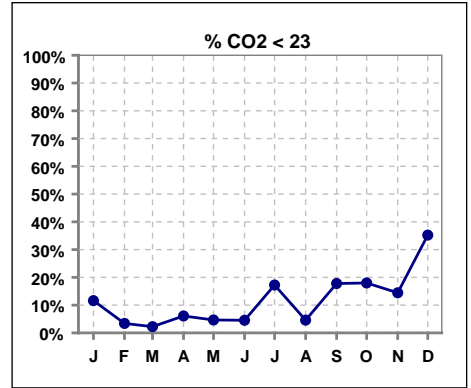


	Jan	Feb	Mar	Apr	May	Jun	Jul	Aug	Sep	Oct	Nov	Dec
# L processed/kg	87	88	91	86	86	90	88	87	91	90	91	90
# L processed/kg>0.8	76	76	78	73	74	77	79	76	76	78	79	78
Pop. Mean	1	1	1	1	1	1	1	1	1	1	1	1
Std. Deviation	0.3	0.3	0.3	0.3	0.2	0.3	0.2	0.2	0.3	0.2	0.2	0.2
% L processed/kg>0.8	87%	86%	86%	85%	86%	86%	90%	87%	84%	87%	87%	87%

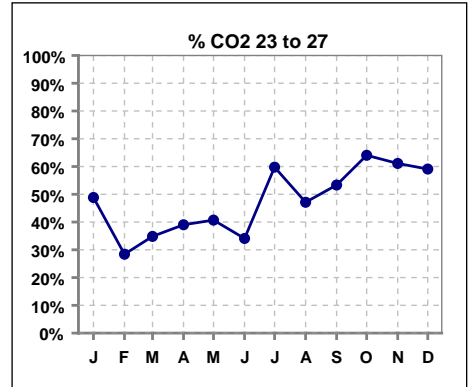


I. ADEQUACY OF DIALYSIS - CONT.

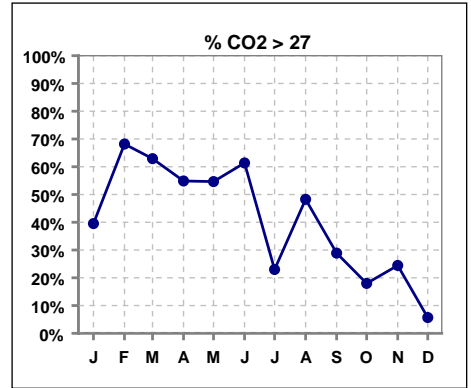
	Jan	Feb	Mar	Apr	May	Jun	Jul	Aug	Sep	Oct	Nov	Dec
# CO2	86	88	89	82	86	88	87	87	90	89	90	88
# CO2 < 23	10	3	2	5	4	4	15	4	16	16	13	31
Pop. Mean	27	28	28	28	28	28	25	27	25	25	25	24
Std. Deviation	3.27	2.81	2.44	2.89	2.97	2.86	3.29	2.36	3.34	2.74	2.86	2.91
% CO2 < 23	12%	3%	2%	6%	5%	5%	17%	5%	18%	18%	14%	35%



	Jan	Feb	Mar	Apr	May	Jun	Jul	Aug	Sep	Oct	Nov	Dec
# CO2	86	88	89	82	86	88	87	87	90	89	90	88
# CO2 23 to 27	42	25	31	32	35	30	52	41	48	57	55	52
Pop. Mean	27	28	28	28	28	28	25	27	25	25	25	24
Std. Deviation	3.27	2.81	2.44	2.89	2.97	2.86	3.29	2.36	3.34	2.74	2.86	2.91
% CO2 23 to 27	49%	28%	35%	39%	41%	34%	60%	47%	53%	64%	61%	59%



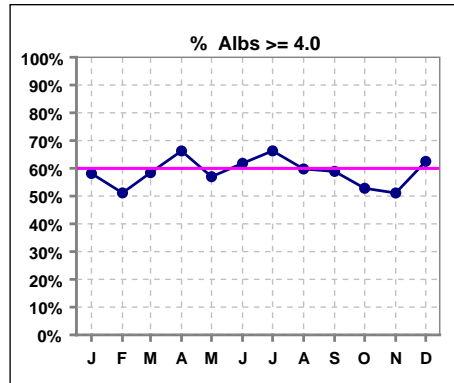
	Jan	Feb	Mar	Apr	May	Jun	Jul	Aug	Sep	Oct	Nov	Dec
# CO2	86	88	89	82	86	88	87	87	90	89	90	88
# CO2 > 27	34	60	56	45	47	54	20	42	26	16	22	5
Pop. Mean	27	28	28	28	28	28	25	27	25	25	25	24
Std. Deviation	3.27	2.81	2.44	2.89	2.97	2.86	3.29	2.36	3.34	2.74	2.86	2.91
% CO2 > 27	40%	68%	63%	55%	55%	61%	23%	48%	29%	18%	24%	6%



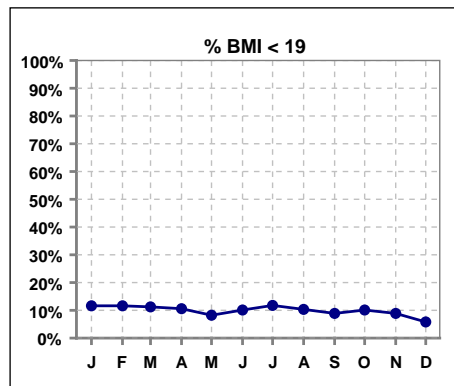
*Albumin values use BCG method - as of July 2001

II. NUTRITION

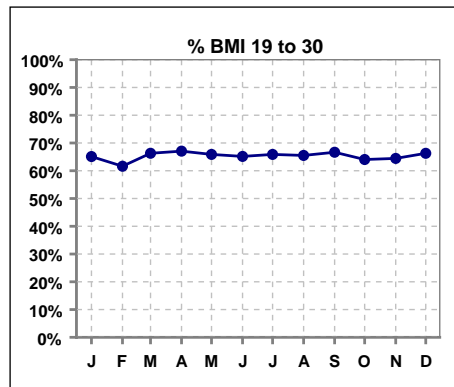
	Jan	Feb	Mar	Apr	May	Jun	Jul	Aug	Sep	Oct	Nov	Dec
# Albumin	86	88	89	83	86	89	86	87	90	89	90	88
# Albumin >= 4.0	50	45	52	55	49	55	57	52	53	47	46	55
Pop. Mean	4.0	3.9	3.9	4.0	3.9	4.0	4.1	4.0	4.0	3.9	4.0	4.0
Std. Deviation	0.40	0.38	0.38	0.37	0.40	0.38	0.32	0.35	0.39	0.36	0.34	0.31
% Alb >= 3.5	87%	92%	91%	94%	92%	92%	95%	92%	92%	88%	93%	95%
% Alb >= 3.0	98%	98%	99%	99%	97%	98%	100%	99%	98%	98%	99%	100%
% Alb >= 4.0	58%	51%	58%	66%	57%	62%	66%	60%	59%	53%	51%	63%



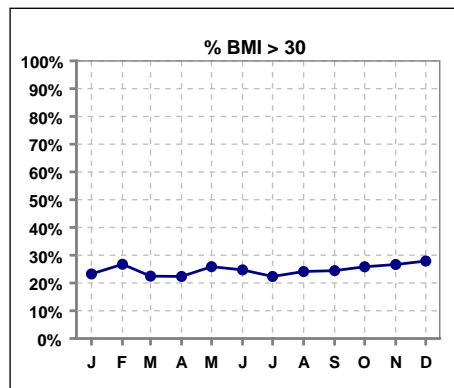
	Jan	Feb	Mar	Apr	May	Jun	Jul	Aug	Sep	Oct	Nov	Dec
# BMI	86	86	89	85	85	89	85	87	90	89	90	86
# BMI < 19	10	10	10	9	7	9	10	9	8	9	8	5
Pop. Mean	27	27	27	27	27	28	27	27	27	27	27	28
Std. Deviation	6.3	6.5	6.5	6.5	6.5	7.3	6.9	7.5	7.1	7.1	7.1	7.4
% BMI < 19	12%	12%	11%	11%	8%	10%	12%	10%	9%	10%	9%	6%



	Jan	Feb	Mar	Apr	May	Jun	Jul	Aug	Sep	Oct	Nov	Dec
# BMI	86	86	89	85	85	89	85	87	90	89	90	86
# BMI 19 to 30	56	53	59	57	56	58	56	57	60	57	58	57
Pop. Mean	27	27	27	27	27	28	27	27	27	27	27	28
Std. Deviation	6.3	6.5	6.5	6.5	6.5	7.3	6.9	7.5	7.1	7.1	7.1	7.4
% BMI 19 to 30	65%	62%	66%	67%	66%	65%	66%	66%	67%	64%	64%	66%



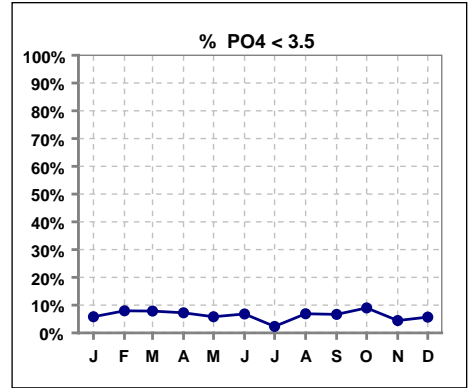
	Jan	Feb	Mar	Apr	May	Jun	Jul	Aug	Sep	Oct	Nov	Dec
# BMI	86	86	89	85	85	89	85	87	90	89	90	86
# BMI > 30	20	23	20	19	22	22	19	21	22	23	24	24
Pop. Mean	27	27	27	27	27	28	27	27	27	27	27	28
Std. Deviation	6.3	6.5	6.5	6.5	6.5	7.3	6.9	7.5	7.1	7.1	7.1	7.4
% BMI > 30	23%	27%	22%	22%	26%	25%	22%	24%	24%	26%	27%	28%



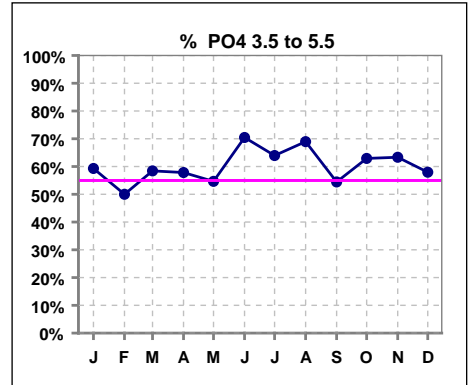
Methodology: a) All labs for 'Adequacy of Dialysis', 'Nutrition', 'Osteodystrophy', 'Anemia' and 'Diabetes' based on last value of month; b) BP's and #L processed are average of all values for month; c) Access data takes last access of month; d) Values for SGA and 'Infection Control' use most recent result.

III. OSTEODYSTROPHY

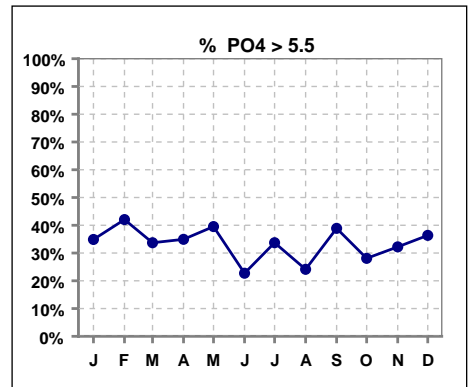
	Jan	Feb	Mar	Apr	May	Jun	Jul	Aug	Sep	Oct	Nov	Dec
# PO4	86	88	89	83	86	88	86	87	90	89	90	88
# PO4 < 3.5	5	7	7	6	5	6	2	6	6	8	4	5
Pop. Mean	5.4	5.4	5.3	5.4	5.4	5.1	5.4	5.0	5.4	5.2	5.4	5.4
Std. Deviation	1.54	1.74	1.71	1.50	1.64	1.48	1.50	1.37	1.59	1.65	1.61	1.82
% PO4 < 3.5	6%	8%	8%	7%	6%	7%	2%	7%	7%	9%	4%	6%



	Jan	Feb	Mar	Apr	May	Jun	Jul	Aug	Sep	Oct	Nov	Dec
# PO4	86	88	89	83	86	88	86	87	90	89	90	88
# PO4 3.5 to 5.5	51	44	52	48	47	62	55	60	49	56	57	51
Pop. Mean	5.4	5.4	5.3	5.4	5.4	5.1	5.4	5.0	5.4	5.2	5.4	5.4
Std. Deviation	1.54	1.74	1.71	1.50	1.64	1.48	1.50	1.37	1.59	1.65	1.61	1.82
% PO4 3.5 to 5.5	59%	50%	58%	58%	55%	70%	64%	69%	54%	63%	63%	58%



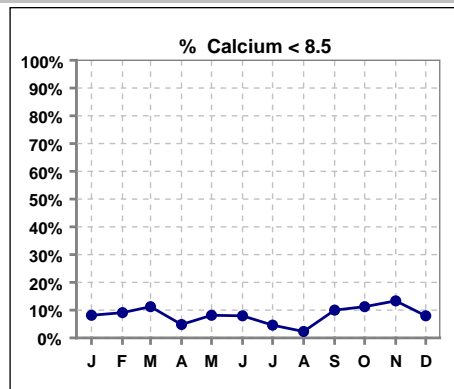
	Jan	Feb	Mar	Apr	May	Jun	Jul	Aug	Sep	Oct	Nov	Dec
# PO4	86	88	89	83	86	88	86	87	90	89	90	88
# PO4 > 5.5	30	37	30	29	34	20	29	21	35	25	29	32
Pop. Mean	5.4	5.4	5.3	5.4	5.4	5.1	5.4	5.0	5.4	5.2	5.4	5.4
Std. Deviation	1.54	1.74	1.71	1.50	1.64	1.48	1.50	1.37	1.59	1.65	1.61	1.82
% PO4 > 5.5	35%	42%	34%	35%	40%	23%	34%	24%	39%	28%	32%	36%



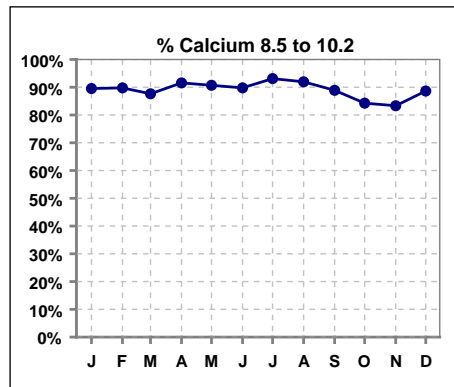
Methodology: a) All labs for 'Adequacy of Dialysis', 'Nutrition', 'Osteodystrophy', 'Anemia' and 'Diabetes' based on last value of month; b) BP's and #L processed are average of all values for month; c) Access data takes last access of month; d) Values for SGA and 'Infection Control' use most recent result.

III. OSTEODYSTROPHY - CONT.

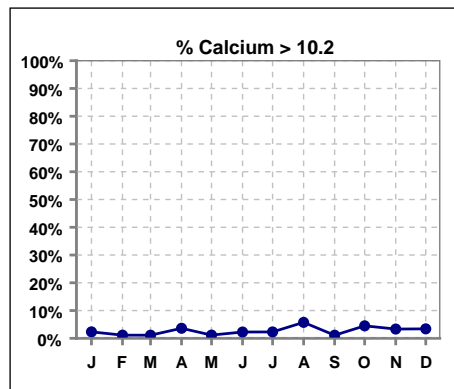
	Jan	Feb	Mar	Apr	May	Jun	Jul	Aug	Sep	Oct	Nov	Dec
# Calcium	86	88	89	83	86	88	87	87	90	89	90	88
# Calcium < 8.5	7	8	10	4	7	7	4	2	9	10	12	7
Pop. Mean	9.3	9.3	9.2	9.4	9.4	9.4	9.3	9.4	9.3	9.2	9.3	9.3
Std. Deviation	0.57	0.57	0.63	0.55	0.57	0.56	0.54	0.52	0.60	0.57	0.59	0.59
% Calcium < 8.5	8%	9%	11%	5%	8%	8%	5%	2%	10%	11%	13%	8%



	Jan	Feb	Mar	Apr	May	Jun	Jul	Aug	Sep	Oct	Nov	Dec
# Calcium	86	88	89	83	86	88	87	87	90	89	90	88
# Calcium 8.5 to 10.2	77	79	78	76	78	79	81	80	80	75	75	78
Pop. Mean	9.3	9.3	9.2	9.4	9.4	9.4	9.3	9.4	9.3	9.2	9.3	9.3
Std. Deviation	0.57	0.57	0.63	0.55	0.57	0.56	0.54	0.52	0.60	0.57	0.59	0.59
% Calcium 8.5 to 10.2	90%	90%	88%	92%	91%	90%	93%	92%	89%	84%	83%	89%

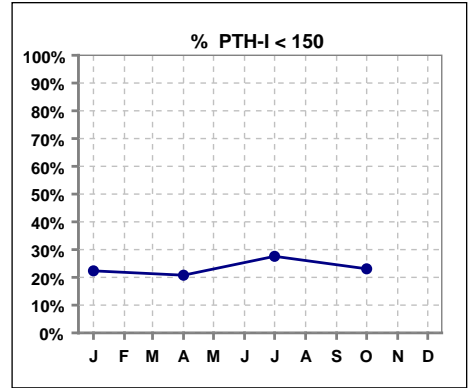


	Jan	Feb	Mar	Apr	May	Jun	Jul	Aug	Sep	Oct	Nov	Dec
# Calcium	86	88	89	83	86	88	87	87	90	89	90	88
# Calcium > 10.2	2	1	1	3	1	2	2	5	1	4	3	3
Pop. Mean	9.3	9.3	9.2	9.4	9.4	9.4	9.3	9.4	9.3	9.2	9.3	9.3
Std. Deviation	0.57	0.57	0.63	0.55	0.57	0.56	0.54	0.52	0.60	0.57	0.59	0.59
% Calcium > 10.2	2%	1%	1%	4%	1%	2%	2%	6%	1%	4%	3%	3%

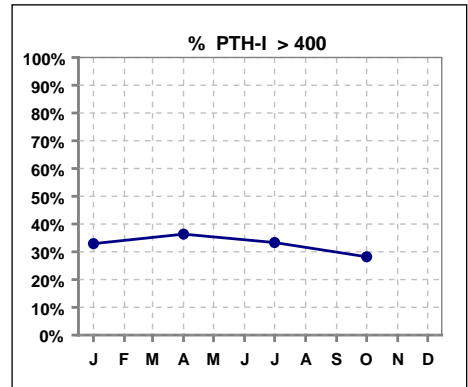


III. OSTEODYSTROPHY - CONT.

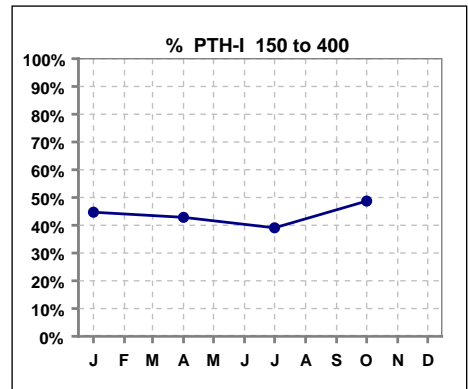
	Jan	Feb	Mar	Apr	May	Jun	Jul	Aug	Sep	Oct	Nov	Dec
# PTH-I	85			77			87			78		
# PTH-I < 150	19			16			24			18		
Pop. Mean	400			444			356			325		
Std. Deviation	334			497			279			316		
% PTH-I < 150	22%			21%			28%			23%		



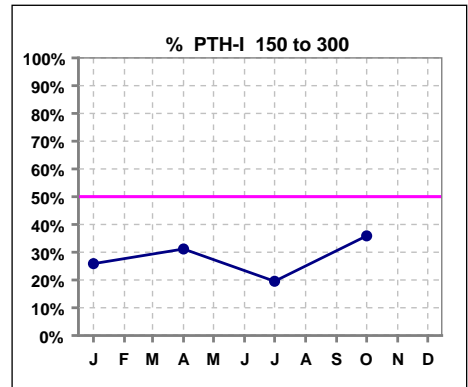
	Jan	Feb	Mar	Apr	May	Jun	Jul	Aug	Sep	Oct	Nov	Dec
# PTH-I	85			77			87			78		
# PTH-I > 400	28			28			29			22		
Pop. Mean	400			444			356			325		
Std. Deviation	334			497			279			316		
% PTH-I > 400	33%			36%			33%			28%		



	Jan	Feb	Mar	Apr	May	Jun	Jul	Aug	Sep	Oct	Nov	Dec
# PTH-I	85			77			87			78		
# PTH-I 150 to 400	38			33			34			38		
Pop. Mean	400			444			356			325		
Std. Deviation	334			497			279			316		
% PTH-I 150 to 400	45%			43%			39%			49%		



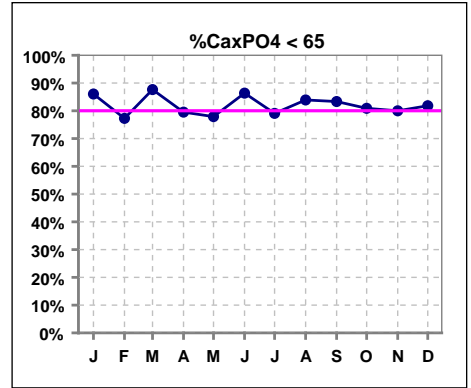
	Jan	Feb	Mar	Apr	May	Jun	Jul	Aug	Sep	Oct	Nov	Dec
# PTH-I	85			77			87			78		
# PTH-I 150 to 300	22			24			17			28		
Pop. Mean	400			444			356			325		
Std. Deviation	334			497			279			316		
% PTH-I 150 to 300	26%			31%			20%			36%		



Methodology: a) All labs for 'Adequacy of Dialysis', 'Nutrition', 'Osteodystrophy', 'Anemia' and 'Diabetes' based on last value of month; b) BP's and #L processed are average of all values for month; c) Access data takes last access of month; d) Values for SGA and 'Infection Control' use most recent result.

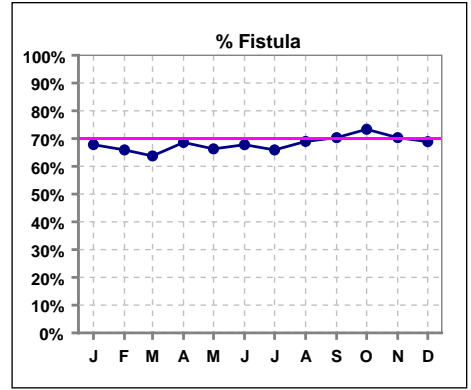
III. OSTEODYSTROPHY - CONT.

	Jan	Feb	Mar	Apr	May	Jun	Jul	Aug	Sep	Oct	Nov	Dec
# Ca x PO4	86	88	89	83	86	88	86	87	90	89	90	88
# Ca x PO4 < 65	74	68	78	66	67	76	68	73	75	72	72	72
Pop. Mean	51.7	52.0	48.5	54.4	54.3	50.5	52.7	49.6	51.8	51.4	52.0	52.1
Std. Deviation	15.5	15.6	14.9	17.2	17.3	16.8	16.5	14.3	16.0	17.5	16.1	17.5
% CaxPO4 < 65	86%	77%	88%	80%	78%	86%	79%	84%	83%	81%	80%	82%

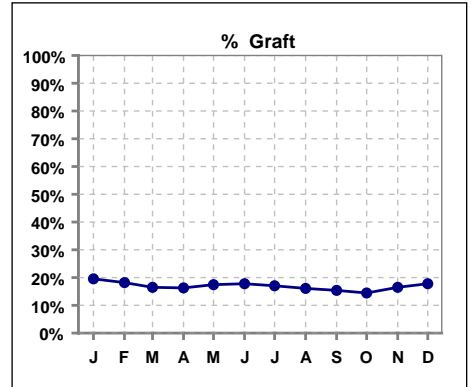


IV. ACCESS

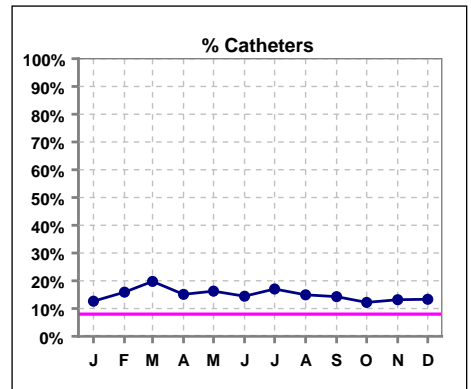
	Jan	Feb	Mar	Apr	May	Jun	Jul	Aug	Sep	Oct	Nov	Dec
# Access	87	88	91	86	86	90	88	87	91	90	91	90
# Fistula	59	58	58	59	57	61	58	60	64	66	64	62
% Fistula	68%	66%	64%	69%	66%	68%	66%	69%	70%	73%	70%	69%



	Jan	Feb	Mar	Apr	May	Jun	Jul	Aug	Sep	Oct	Nov	Dec
# Access	87	88	91	86	86	90	88	87	91	90	91	90
# Graft	17	16	15	14	15	16	15	14	14	13	15	16
% Graft	20%	18%	16%	16%	17%	18%	17%	16%	15%	14%	16%	18%



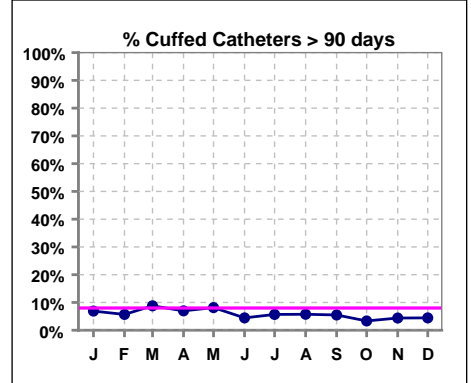
	Jan	Feb	Mar	Apr	May	Jun	Jul	Aug	Sep	Oct	Nov	Dec
# Access	87	88	91	86	86	90	88	87	91	90	91	90
# Catheters	11	14	18	13	14	13	15	13	13	11	12	12
% Catheters	13%	16%	20%	15%	16%	14%	17%	15%	14%	12%	13%	13%



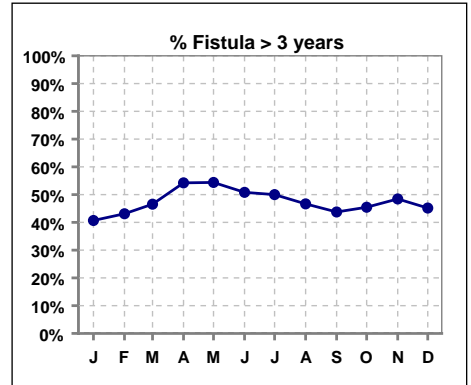
IV. ACCESS - CONT.

Cuffed Catheters > 90 days

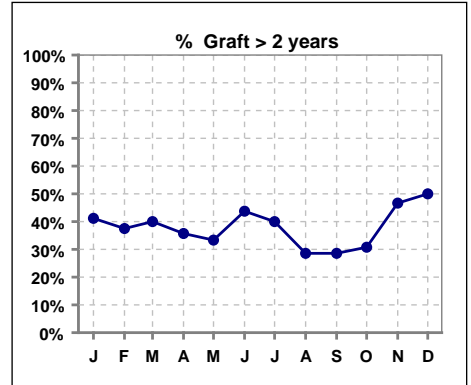
	Jan	Feb	Mar	Apr	May	Jun	Jul	Aug	Sep	Oct	Nov	Dec
# Access	87	88	91	86	86	90	88	87	91	90	91	90
# Cuffed Catheters	6	5	8	6	7	4	5	5	5	3	4	4
% Cuffed Catheters	7%	6%	9%	7%	8%	4%	6%	6%	5%	3%	4%	4%



	Jan	Feb	Mar	Apr	May	Jun	Jul	Aug	Sep	Oct	Nov	Dec
# Fistula	59	58	58	59	57	61	58	60	64	66	64	62
# Fistula > 3 yrs	24	25	27	32	31	31	29	28	28	30	31	28
% Fistula > 3 yrs	41%	43%	47%	54%	54%	51%	50%	47%	44%	45%	48%	45%



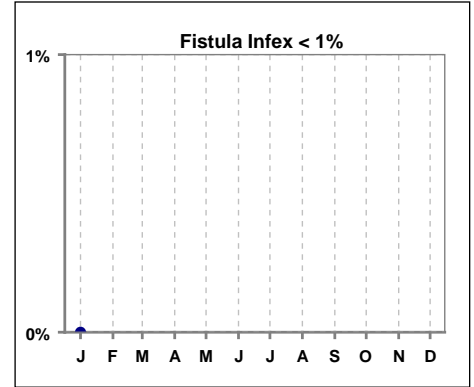
	Jan	Feb	Mar	Apr	May	Jun	Jul	Aug	Sep	Oct	Nov	Dec
# Graft	17	16	15	14	15	16	15	14	14	13	15	16
# Graft > 2 yrs	7	6	6	5	5	7	6	4	4	4	7	8
% Graft > 2 yrs	41%	38%	40%	36%	33%	44%	40%	29%	29%	31%	47%	50%



IV. ACCESS - CONT.

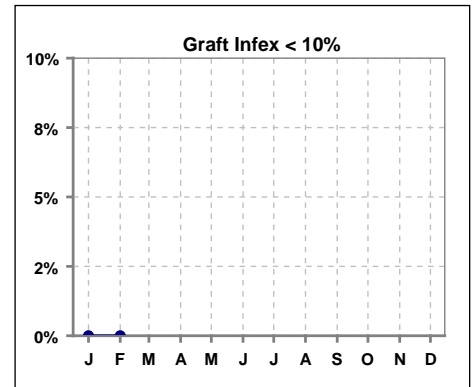
Infection per use-life of access fistula

	Jan	Feb	Mar	Apr	May	Jun	Jul	Aug	Sep	Oct	Nov	Dec
Infex per use-life	0											



Infection per use-life of access graft

	Jan	Feb	Mar	Apr	May	Jun	Jul	Aug	Sep	Oct	Nov	Dec
Infex per use-life	0	0										



Thrombosis Episode - access fistula

	Jan	Feb	Mar	Apr	May	Jun	Jul	Aug	Sep	Oct	Nov	Dec
Current Month												
Rolling Year-to-date												

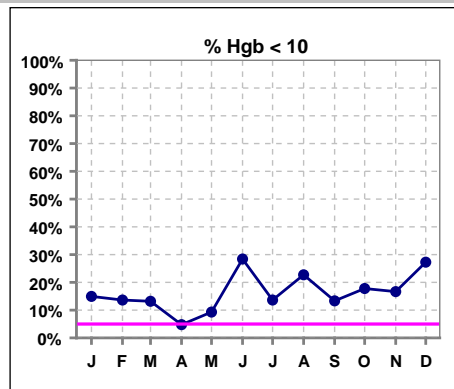
Thrombosis Episode - access graft

	Jan	Feb	Mar	Apr	May	Jun	Jul	Aug	Sep	Oct	Nov	Dec
Current Month									0.06			
Rolling Year-to-date									0.01	0.01	0.00	0.00

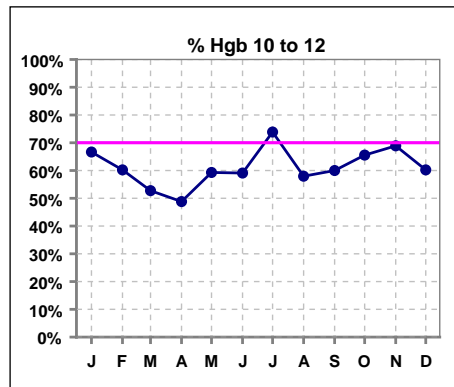
Methodology: a) All labs for 'Adequacy of Dialysis', 'Nutrition', 'Osteodystrophy', 'Anemia' and 'Diabetes' based on last value of month; b) BP's and #L processed are average of all values for month; c) Access data takes last access of month; d) Values for SGA and 'Infection Control' use most recent result.

V. ANEMIA

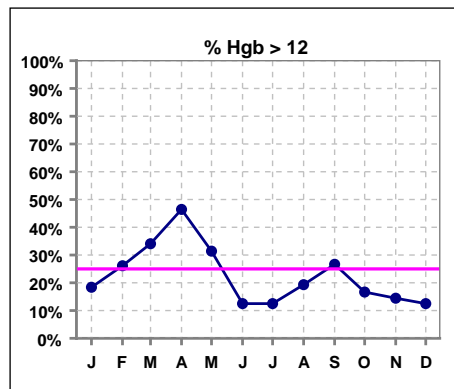
	Jan	Feb	Mar	Apr	May	Jun	Jul	Aug	Sep	Oct	Nov	Dec
# Hgb	87	88	91	84	86	88	88	88	90	90	90	88
# Hgb < 10	13	12	12	4	8	25	12	20	12	16	15	24
Pop. Mean	11.0	11.3	11.4	12.0	11.5	10.6	10.8	10.9	11.3	11.0	11.0	10.8
Std. Deviation	1.3	1.1	1.3	1.3	1.2	1.2	1.3	1.3	1.3	1.3	1.2	1.5
% Hgb < 10	15%	14%	13%	5%	9%	28%	14%	23%	13%	18%	17%	27%



	Jan	Feb	Mar	Apr	May	Jun	Jul	Aug	Sep	Oct	Nov	Dec
# Hgb	87	88	91	84	86	88	88	88	90	90	90	88
# Hgb 10 to 12	58	53	48	41	51	52	65	51	54	59	62	53
Pop. Mean	11.0	11.3	11.4	12.0	11.5	10.6	10.8	10.9	11.3	11.0	11.0	10.8
Std. Deviation	1.3	1.1	1.3	1.3	1.2	1.2	1.3	1.3	1.3	1.3	1.2	1.5
% Hgb 10 to 12	67%	60%	53%	49%	59%	59%	74%	58%	60%	66%	69%	60%

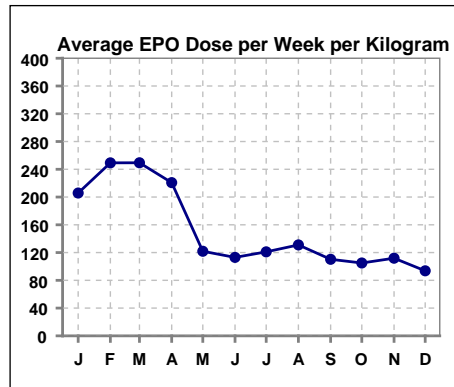


	Jan	Feb	Mar	Apr	May	Jun	Jul	Aug	Sep	Oct	Nov	Dec
# Hgb	87	88	91	84	86	88	88	88	90	90	90	88
# Hgb > 12	16	23	31	39	27	11	11	17	24	15	13	11
Pop. Mean	11.0	11.3	11.4	12.0	11.5	10.6	10.8	10.9	11.3	11.0	11.0	10.8
Std. Deviation	1.3	1.1	1.3	1.3	1.2	1.2	1.3	1.3	1.3	1.3	1.2	1.5
% Hgb > 12	18%	26%	34%	46%	31%	13%	13%	19%	27%	17%	14%	13%



Average EPO Dose per Week per Kilogram

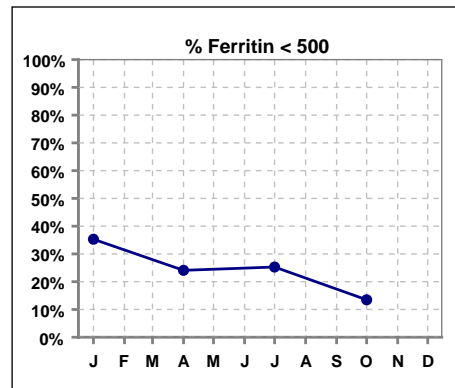
	Jan	Feb	Mar	Apr	May	Jun	Jul	Aug	Sep	Oct	Nov	Dec
# Average EPO	205.8	249.3	249.4	220.8	121.9	113.0	121.0	131.0	110.3	105.0	111.9	93.7



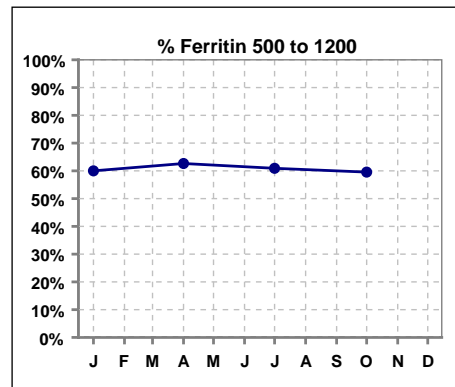
V. ANEMIA - CONT.

Iron Profile

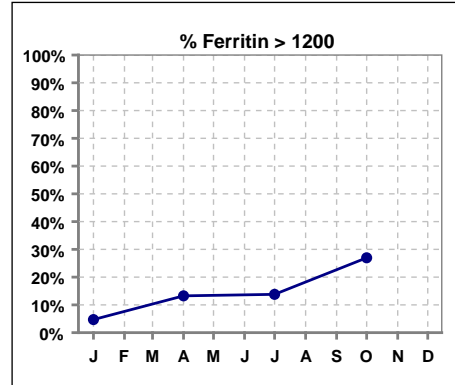
	Jan	Feb	Mar	Apr	May	Jun	Jul	Aug	Sep	Oct	Nov	Dec
# Ferritin	85			83			87			89		
# Ferritin < 500	30			20			22			12		
Pop. Mean	652			792			776			1048		
Std. Deviation	358			457			370			883		
% Ferritin < 500	35%			24%			25%			13%		



	Jan	Feb	Mar	Apr	May	Jun	Jul	Aug	Sep	Oct	Nov	Dec
# Ferritin	85			83			87			89		
# Ferritin 500 to 1200	51			52			53			53		
Pop. Mean	652			792			776			1048		
Std. Deviation	358			457			370			883		
% Ferritin 500 to 1200	60%			63%			61%			60%		

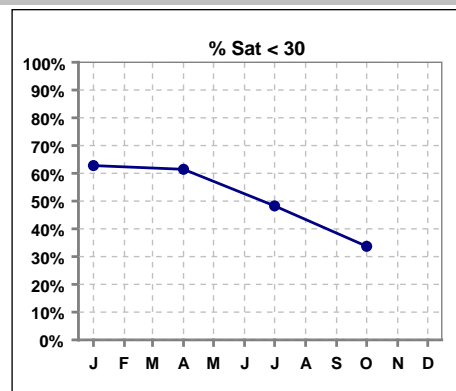


	Jan	Feb	Mar	Apr	May	Jun	Jul	Aug	Sep	Oct	Nov	Dec
# Ferritin	85			83			87			89		
# Ferritin > 1200	4			11			12			24		
Pop. Mean	652			792			776			1048		
Std. Deviation	358			457			370			883		
% Ferritin > 1200	5%			13%			14%			27%		

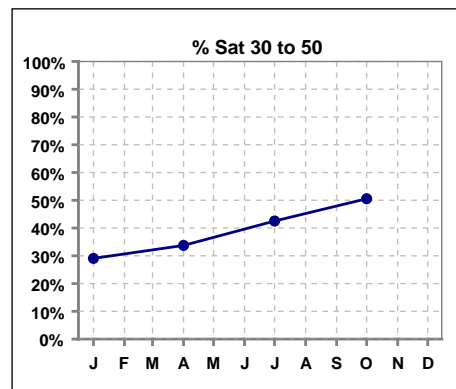


V. ANEMIA - CONT.

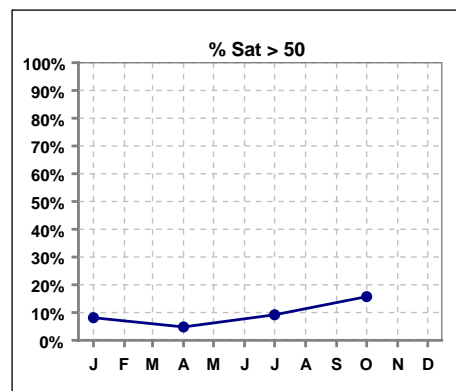
	Jan	Feb	Mar	Apr	May	Jun	Jul	Aug	Sep	Oct	Nov	Dec
# % Sat	86			83			87			89		
# % Sat < 30	54			51			42			30		
Pop. Mean	29			29			33			37		
Std. Deviation	18			15			17			18		
%% Sat < 30	63%			61%			48%			34%		



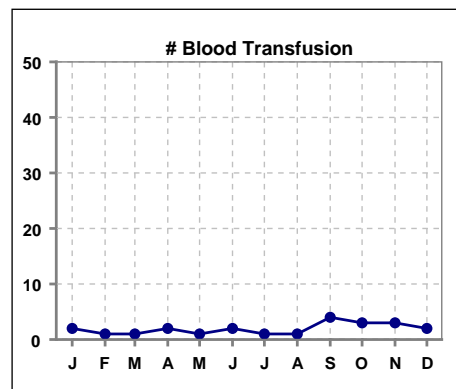
	Jan	Feb	Mar	Apr	May	Jun	Jul	Aug	Sep	Oct	Nov	Dec
# % Sat	86			83			87			89		
# % Sat 30 to 50	25			28			37			45		
Pop. Mean	29			29			33			37		
Std. Deviation	18			15			17			18		
%% Sat 30 to 50	29%			34%			43%			51%		



	Jan	Feb	Mar	Apr	May	Jun	Jul	Aug	Sep	Oct	Nov	Dec
# % Sat	86			83			87			89		
# % Sat > 50	7			4			8			14		
Pop. Mean	29			29			33			37		
Std. Deviation	18			15			17			18		
%% Sat > 50	8%			5%			9%			16%		



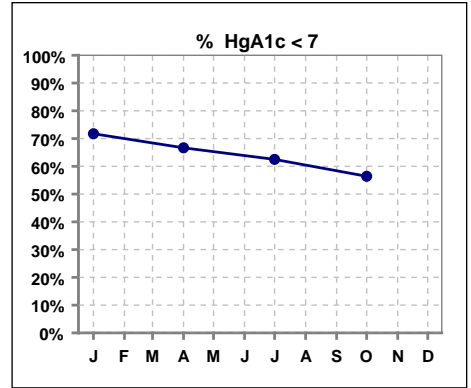
	Jan	Feb	Mar	Apr	May	Jun	Jul	Aug	Sep	Oct	Nov	Dec
# Blood Transfusion	2	1	1	2	1	2	1	1	4	3	3	2



Methodology: a) All labs for 'Adequacy of Dialysis', 'Nutrition', 'Osteodystrophy', 'Anemia' and 'Diabetes' based on last value of month; b) BP's and #L processed are average of all values for month; c) Access data takes last access of month; d) Values for SGA and 'Infection Control' use most recent result.

VI. Diabetes

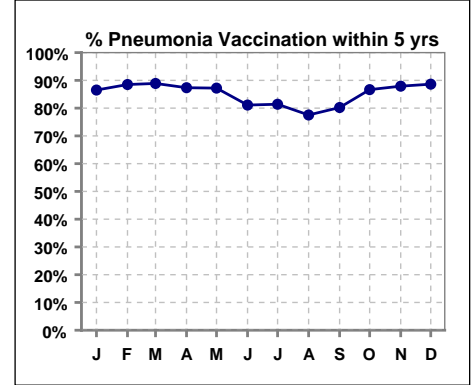
	Jan	Feb	Mar	Apr	May	Jun	Jul	Aug	Sep	Oct	Nov	Dec
# HgA1c	46			42			40			39		
# HgA1c < 7	33			28			25			22		
Pop. Mean	6.5			6.4			6.7			6.8		
Std. Deviation	1.38			1.50			1.46			1.52		
% HgA1c < 7	72%			67%			63%			56%		



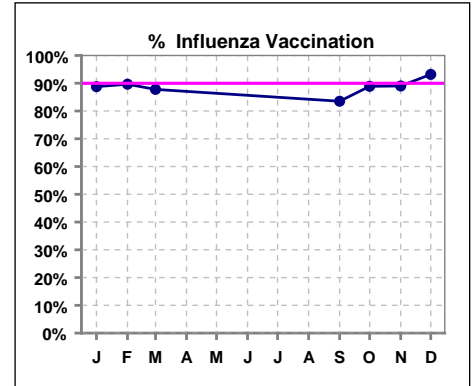
VII. Infection Control

Pneumonia vaccination within the past five years

	Jan	Feb	Mar	Apr	May	Jun	Jul	Aug	Sep	Oct	Nov	Dec
# Patient	89	87	90	87	86	90	86	89	91	90	91	88
# Pneumonia	77	77	80	76	75	73	70	69	73	78	80	78
% Pneumonia	87%	89%	89%	87%	87%	81%	81%	78%	80%	87%	88%	89%



	Jan	Feb	Mar	Apr	May	Jun	Jul	Aug	Sep	Oct	Nov	Dec
# Patient	89	87	90						91	90	91	88
# Influenza	79	78	79						76	80	81	82
% Influenza	89%	90%	88%						84%	89%	89%	93%



Methodology: a) All labs for 'Adequacy of Dialysis', 'Nutrition', 'Osteodystrophy', 'Anemia' and 'Diabetes' based on last value of month; b) BP's and #L processed are average of all values for month; c) Access data takes last access of month; d) Values for SGA and 'Infection Control' use most recent result.