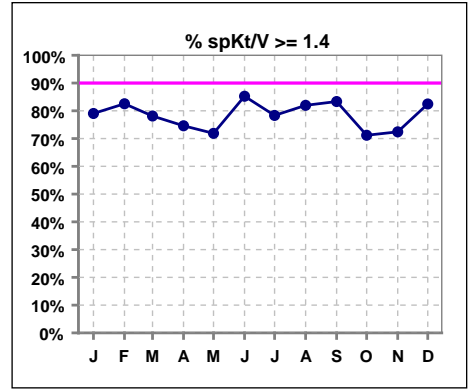
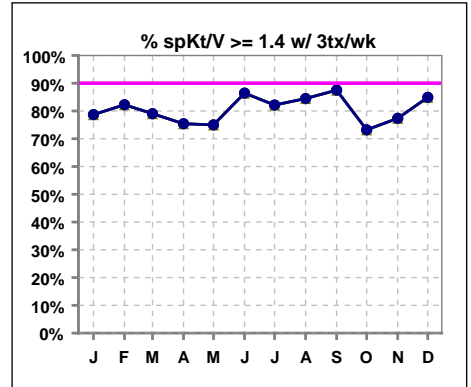


I. ADEQUACY OF DIALYSIS

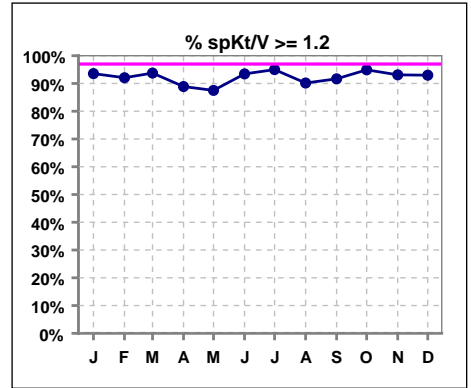
	Jan	Feb	Mar	Apr	May	Jun	Jul	Aug	Sep	Oct	Nov	Dec
# spKt/V	62	63	64	63	64	61	60	61	60	59	58	57
# spKt/V >= 1.4	49	52	50	47	46	52	47	50	50	42	42	47
Pop. Mean	1.62	1.64	1.61	1.54	1.58	1.63	1.65	1.62	1.63	1.61	1.56	1.61
Std. Deviation	0.28	0.34	0.30	0.28	0.36	0.30	0.31	0.35	0.29	0.33	0.29	0.29
% spKt/V >= 1.4	79%	83%	78%	75%	72%	85%	78%	82%	83%	71%	72%	82%



	Jan	Feb	Mar	Apr	May	Jun	Jul	Aug	Sep	Oct	Nov	Dec
# spKt/V w/ 3tx/wk	61	62	62	61	60	59	56	58	56	56	53	53
# spKt/V >= 1.4 w/3tx/wk	48	51	49	46	45	51	46	49	49	41	41	45
Pop. Mean	1.62	1.63	1.62	1.54	1.61	1.65	1.67	1.63	1.66	1.63	1.61	1.63
Std. Deviation	0.28	0.34	0.31	0.28	0.33	0.29	0.30	0.33	0.27	0.32	0.29	0.29
% >= 1.4 w/3tx/wk	79%	82%	79%	75%	75%	86%	82%	84%	88%	73%	77%	85%

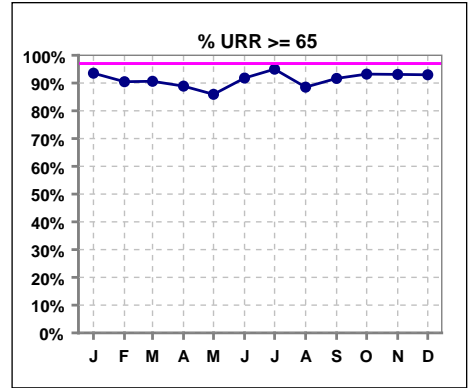


	Jan	Feb	Mar	Apr	May	Jun	Jul	Aug	Sep	Oct	Nov	Dec
# spKt/V	62	63	64	63	64	61	60	61	60	59	58	57
# spKt/V >= 1.2	58	58	60	56	56	57	57	55	55	56	54	53
Pop. Mean	1.62	1.64	1.61	1.54	1.58	1.63	1.65	1.62	1.63	1.61	1.56	1.61
Std. Deviation	0.28	0.34	0.30	0.28	0.36	0.30	0.31	0.35	0.29	0.33	0.29	0.29
% spKt/V >= 1.2	94%	92%	94%	89%	88%	93%	95%	90%	92%	95%	93%	93%

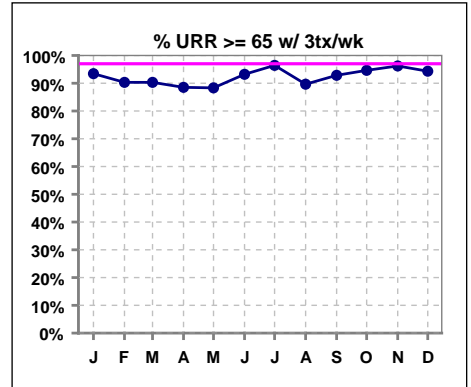


I. ADEQUACY OF DIALYSIS - CONT.

	Jan	Feb	Mar	Apr	May	Jun	Jul	Aug	Sep	Oct	Nov	Dec
# URR	62	63	64	63	64	61	60	61	60	59	58	57
# URR >= 65	58	57	58	56	55	56	57	54	55	55	54	53
Pop. Mean	75	74	74	73	73	75	75	74	75	74	74	75
Std. Deviation	5.79	8.46	6.58	6.22	8.80	6.54	6.57	8.01	6.43	6.25	6.87	6.79
% URR >= 65	94%	90%	91%	89%	86%	92%	95%	89%	92%	93%	93%	93%



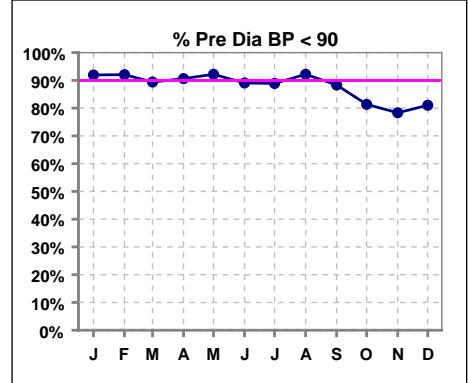
	Jan	Feb	Mar	Apr	May	Jun	Jul	Aug	Sep	Oct	Nov	Dec
# URR w/ 3tx/wk	61	62	62	61	60	59	56	58	56	56	53	53
# URR>=65 w/ 3tx/wk	57	56	56	54	53	55	54	52	52	53	51	50
Pop. Mean	75	74	74	73	74	75	76	75	76	75	74	75
Std. Deviation	5.82	8.50	6.62	6.21	7.62	6.02	6.04	7.53	5.80	5.65	6.35	6.79
% URR>=65 w/ 3tx/wk	93%	90%	90%	89%	88%	93%	96%	90%	93%	95%	96%	94%



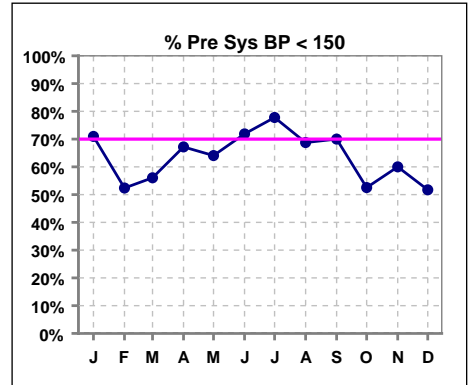
I. ADEQUACY OF DIALYSIS - CONT.

Blood Pressure Control (Pre)

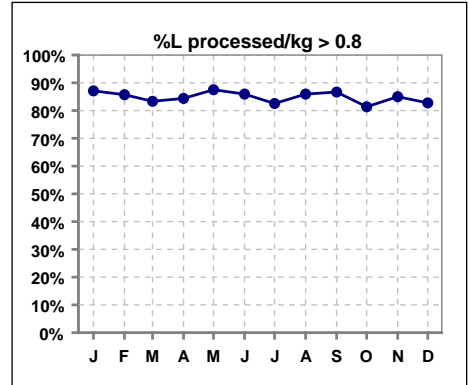
	Jan	Feb	Mar	Apr	May	Jun	Jul	Aug	Sep	Oct	Nov	Dec
# Pre Dia BP	62	63	66	64	64	64	63	64	60	59	60	58
# Pre Dia BP < 90	57	58	59	58	59	57	56	59	53	48	47	47
Pop. Mean	73	75	75	74	73	71	71	72	73	75	75	76
Std. Deviation	12.9	12.6	13.7	12.6	12.0	13.0	13.4	14.8	14.7	15.4	16.0	14.9
% Pre Dia BP < 90	92%	92%	89%	91%	92%	89%	89%	92%	88%	81%	78%	81%



	Jan	Feb	Mar	Apr	May	Jun	Jul	Aug	Sep	Oct	Nov	Dec
# Pre Sys BP	62	63	66	64	64	64	63	64	60	59	60	58
# Pre Sys BP < 150	44	33	37	43	41	46	49	44	42	31	36	30
Pop. Mean	141	144	144	142	140	138	137	139	138	143	145	145
Std. Deviation	20.2	19.0	18.7	18.6	18.5	19.1	19.6	21.3	21.0	20.9	22.8	20.5
%Pre Sys BP <150	71%	52%	56%	67%	64%	72%	78%	69%	70%	53%	60%	52%

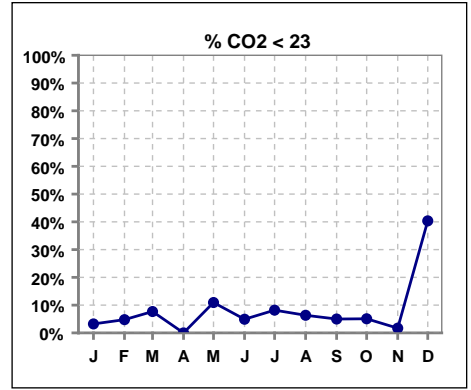


	Jan	Feb	Mar	Apr	May	Jun	Jul	Aug	Sep	Oct	Nov	Dec
# L processed/kg	62	63	66	64	64	64	63	64	60	59	60	58
# L processed/kg>0.8	54	54	55	54	56	55	52	55	52	48	51	48
Pop. Mean	1	1	1	1	1	1	1	1	1	1	1	1
Std. Deviation	0.3	0.3	0.3	0.3	0.3	0.3	0.3	0.3	0.3	0.3	0.3	0.3
% L processed/kg>0.8	87%	86%	83%	84%	88%	86%	83%	86%	87%	81%	85%	83%

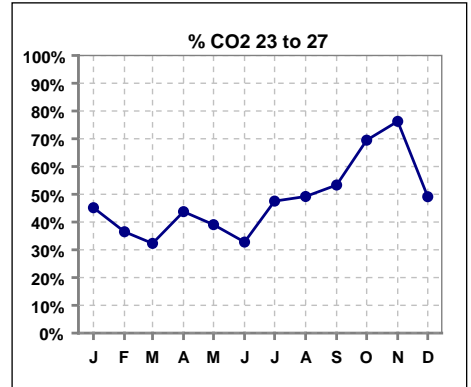


I. ADEQUACY OF DIALYSIS - CONT.

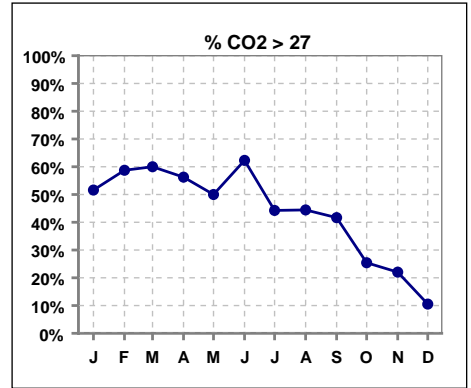
	Jan	Feb	Mar	Apr	May	Jun	Jul	Aug	Sep	Oct	Nov	Dec
# CO2	62	63	65	64	64	61	61	63	60	59	59	57
# CO2 < 23	2	3	5	0	7	3	5	4	3	3	1	23
Pop. Mean	28	28	28	28	27	28	27	27	27	26	26	23
Std. Deviation	3.30	3.15	3.56	2.50	3.30	2.88	2.96	2.56	2.24	2.32	1.75	2.76
% CO2 < 23	3%	5%	8%	0%	11%	5%	8%	6%	5%	5%	2%	40%



	Jan	Feb	Mar	Apr	May	Jun	Jul	Aug	Sep	Oct	Nov	Dec
# CO2	62	63	65	64	64	61	61	63	60	59	59	57
# CO2 23 to 27	28	23	21	28	25	20	29	31	32	41	45	28
Pop. Mean	28	28	28	28	27	28	27	27	27	26	26	23
Std. Deviation	3.30	3.15	3.56	2.50	3.30	2.88	2.96	2.56	2.24	2.32	1.75	2.76
% CO2 23 to 27	45%	37%	32%	44%	39%	33%	48%	49%	53%	69%	76%	49%



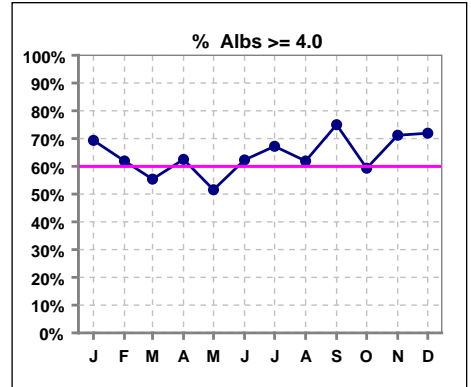
	Jan	Feb	Mar	Apr	May	Jun	Jul	Aug	Sep	Oct	Nov	Dec
# CO2	62	63	65	64	64	61	61	63	60	59	59	57
# CO2 > 27	32	37	39	36	32	38	27	28	25	15	13	6
Pop. Mean	28	28	28	28	27	28	27	27	27	26	26	23
Std. Deviation	3.30	3.15	3.56	2.50	3.30	2.88	2.96	2.56	2.24	2.32	1.75	2.76
% CO2 > 27	52%	59%	60%	56%	50%	62%	44%	44%	42%	25%	22%	11%



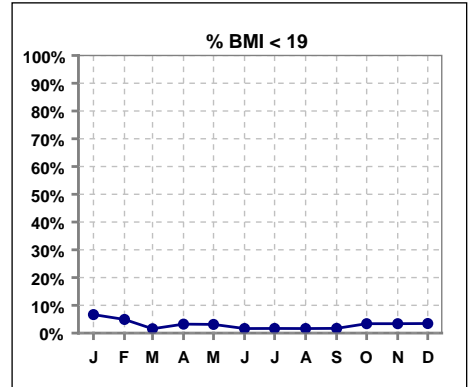
*Albumin values use BCG method - as of July 2001

II. NUTRITION

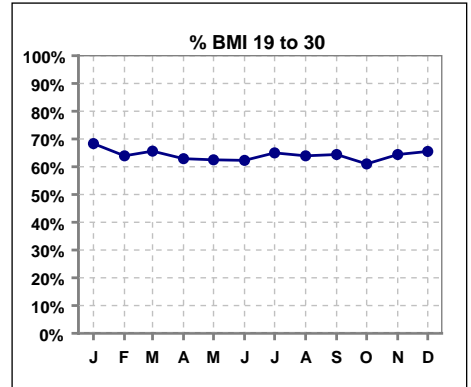
	Jan	Feb	Mar	Apr	May	Jun	Jul	Aug	Sep	Oct	Nov	Dec
# Albumin	62	63	65	64	64	61	61	63	60	59	59	57
# Albumin >= 4.0	43	39	36	40	33	38	41	39	45	35	42	41
Pop. Mean	4.1	4.0	3.9	4.0	3.9	4.0	4.0	4.0	4.1	4.0	4.1	4.1
Std. Deviation	0.34	0.30	0.34	0.36	0.32	0.33	0.34	0.37	0.26	0.27	0.34	0.31
% Alb >= 3.5	94%	98%	92%	91%	94%	92%	92%	92%	98%	97%	95%	98%
% Alb >= 3.0	100%	100%	98%	98%	98%	100%	100%	98%	100%	100%	98%	100%
% Alb >= 4.0	69%	62%	55%	63%	52%	62%	67%	62%	75%	59%	71%	72%



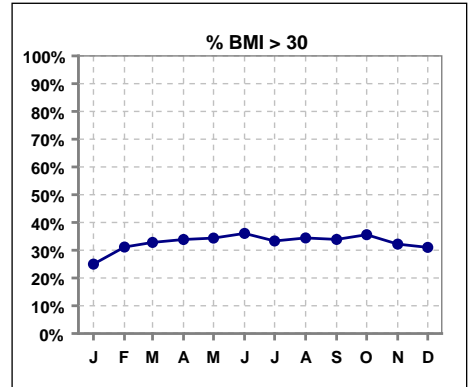
	Jan	Feb	Mar	Apr	May	Jun	Jul	Aug	Sep	Oct	Nov	Dec
# BMI	60	61	64	62	64	61	60	61	59	59	59	58
# BMI < 19	4	3	1	2	2	1	1	1	1	2	2	2
Pop. Mean	27	28	28	28	28	28	28	28	28	28	28	28
Std. Deviation	6.3	6.7	6.6	6.6	6.4	6.5	6.1	6.2	6.2	6.2	6.8	6.2
% BMI < 19	7%	5%	2%	3%	3%	2%	2%	2%	2%	3%	3%	3%



	Jan	Feb	Mar	Apr	May	Jun	Jul	Aug	Sep	Oct	Nov	Dec
# BMI	60	61	64	62	64	61	60	61	59	59	59	58
# BMI 19 to 30	41	39	42	39	40	38	39	39	38	36	38	38
Pop. Mean	27	28	28	28	28	28	28	28	28	28	28	28
Std. Deviation	6.3	6.7	6.6	6.6	6.4	6.5	6.1	6.2	6.2	6.2	6.8	6.2
% BMI 19 to 30	68%	64%	66%	63%	63%	62%	65%	64%	64%	61%	64%	66%



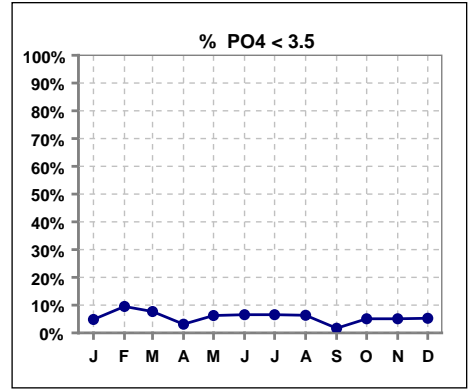
	Jan	Feb	Mar	Apr	May	Jun	Jul	Aug	Sep	Oct	Nov	Dec
# BMI	60	61	64	62	64	61	60	61	59	59	59	58
# BMI > 30	15	19	21	21	22	22	20	21	20	21	19	18
Pop. Mean	27	28	28	28	28	28	28	28	28	28	28	28
Std. Deviation	6.3	6.7	6.6	6.6	6.4	6.5	6.1	6.2	6.2	6.2	6.8	6.2
% BMI > 30	25%	31%	33%	34%	34%	36%	33%	34%	34%	36%	32%	31%



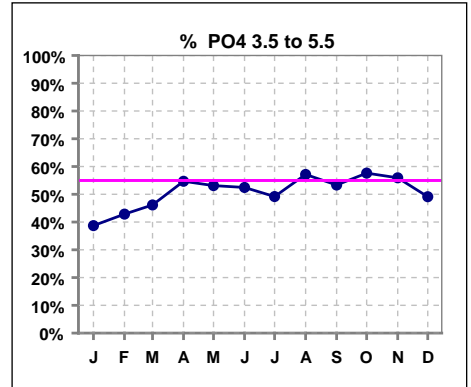
Methodology: a) All labs for 'Adequacy of Dialysis', 'Nutrition', 'Osteodystrophy', 'Anemia' and 'Diabetes' based on last value of month; b) BP's and #L processed are average of all values for month; c) Access data takes last access of month; d) Values for SGA and 'Infection Control' use most recent result.

III. OSTEODYSTROPHY

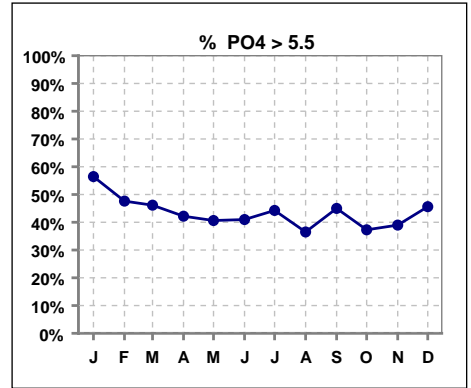
	Jan	Feb	Mar	Apr	May	Jun	Jul	Aug	Sep	Oct	Nov	Dec
# PO4	62	63	65	64	64	61	61	63	60	59	59	57
# PO4 < 3.5	3	6	5	2	4	4	4	4	1	3	3	3
Pop. Mean	5.7	5.5	5.5	5.7	5.6	5.6	5.6	5.5	5.6	5.3	5.4	5.8
Std. Deviation	1.52	1.48	1.53	1.47	1.85	1.61	1.64	1.61	1.27	1.42	1.78	1.80
% PO4 < 3.5	5%	10%	8%	3%	6%	7%	7%	6%	2%	5%	5%	5%



	Jan	Feb	Mar	Apr	May	Jun	Jul	Aug	Sep	Oct	Nov	Dec
# PO4	62	63	65	64	64	61	61	63	60	59	59	57
# PO4 3.5 to 5.5	24	27	30	35	34	32	30	36	32	34	33	28
Pop. Mean	5.7	5.5	5.5	5.7	5.6	5.6	5.6	5.5	5.6	5.3	5.4	5.8
Std. Deviation	1.52	1.48	1.53	1.47	1.85	1.61	1.64	1.61	1.27	1.42	1.78	1.80
% PO4 3.5 to 5.5	39%	43%	46%	55%	53%	52%	49%	57%	53%	58%	56%	49%

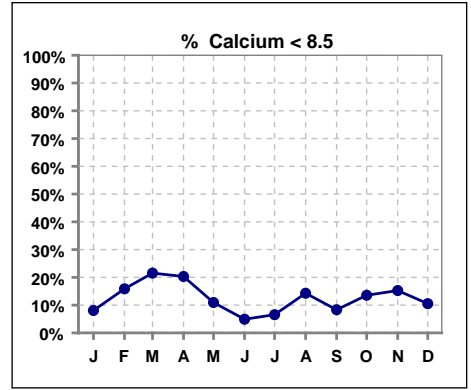


	Jan	Feb	Mar	Apr	May	Jun	Jul	Aug	Sep	Oct	Nov	Dec
# PO4	62	63	65	64	64	61	61	63	60	59	59	57
# PO4 > 5.5	35	30	30	27	26	25	27	23	27	22	23	26
Pop. Mean	5.7	5.5	5.5	5.7	5.6	5.6	5.6	5.5	5.6	5.3	5.4	5.8
Std. Deviation	1.52	1.48	1.53	1.47	1.85	1.61	1.64	1.61	1.27	1.42	1.78	1.80
% PO4 > 5.5	56%	48%	46%	42%	41%	41%	44%	37%	45%	37%	39%	46%

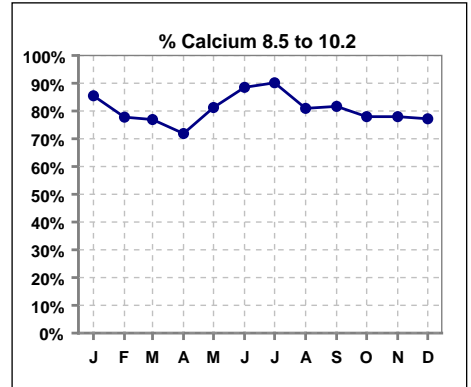


III. OSTEODYSTROPHY - CONT.

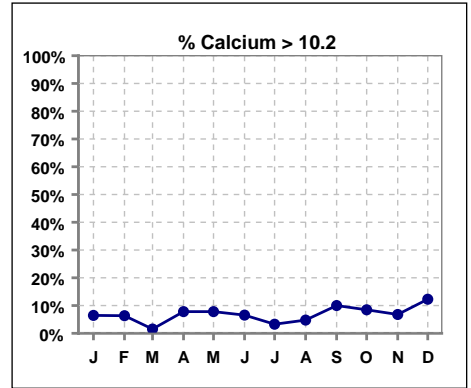
	Jan	Feb	Mar	Apr	May	Jun	Jul	Aug	Sep	Oct	Nov	Dec
# Calcium	62	63	65	64	64	61	61	63	60	59	59	57
# Calcium < 8.5	5	10	14	13	7	3	4	9	5	8	9	6
Pop. Mean	9.4	9.2	9.0	9.1	9.3	9.4	9.4	9.2	9.4	9.3	9.2	9.4
Std. Deviation	0.63	0.69	0.67	0.92	0.71	0.63	0.57	0.66	0.68	0.65	0.74	0.74
% Calcium < 8.5	8%	16%	22%	20%	11%	5%	7%	14%	8%	14%	15%	11%



	Jan	Feb	Mar	Apr	May	Jun	Jul	Aug	Sep	Oct	Nov	Dec
# Calcium	62	63	65	64	64	61	61	63	60	59	59	57
# Calcium 8.5 to 10.2	53	49	50	46	52	54	55	51	49	46	46	44
Pop. Mean	9.4	9.2	9.0	9.1	9.3	9.4	9.4	9.2	9.4	9.3	9.2	9.4
Std. Deviation	0.63	0.69	0.67	0.92	0.71	0.63	0.57	0.66	0.68	0.65	0.74	0.74
% Calcium 8.5 to 10.2	85%	78%	77%	72%	81%	89%	90%	81%	82%	78%	78%	77%

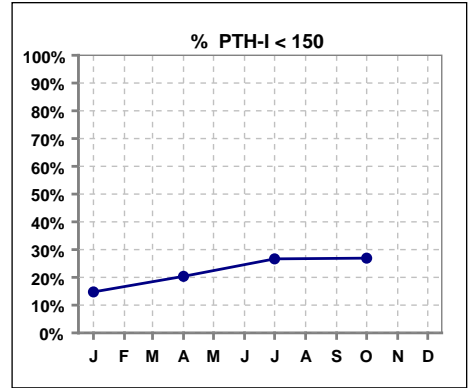


	Jan	Feb	Mar	Apr	May	Jun	Jul	Aug	Sep	Oct	Nov	Dec
# Calcium	62	63	65	64	64	61	61	63	60	59	59	57
# Calcium > 10.2	4	4	1	5	5	4	2	3	6	5	4	7
Pop. Mean	9.4	9.2	9.0	9.1	9.3	9.4	9.4	9.2	9.4	9.3	9.2	9.4
Std. Deviation	0.63	0.69	0.67	0.92	0.71	0.63	0.57	0.66	0.68	0.65	0.74	0.74
% Calcium > 10.2	6%	6%	2%	8%	8%	7%	3%	5%	10%	8%	7%	12%

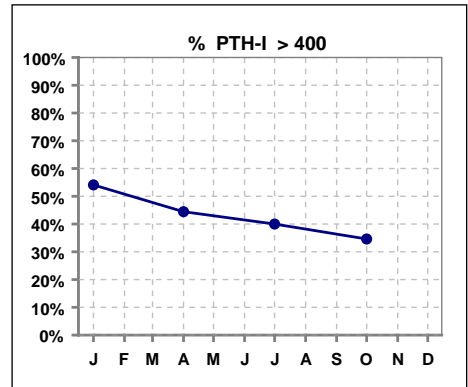


III. OSTEODYSTROPHY - CONT.

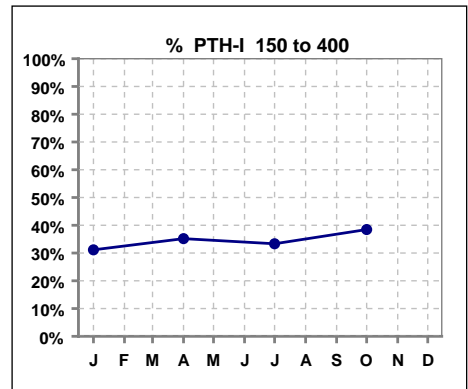
	Jan	Feb	Mar	Apr	May	Jun	Jul	Aug	Sep	Oct	Nov	Dec
# PTH-I	61			54			60			52		
# PTH-I < 150	9			11			16			14		
Pop. Mean	528			530			471			422		
Std. Deviation	491			560			506			510		
% PTH-I < 150	15%			20%			27%			27%		



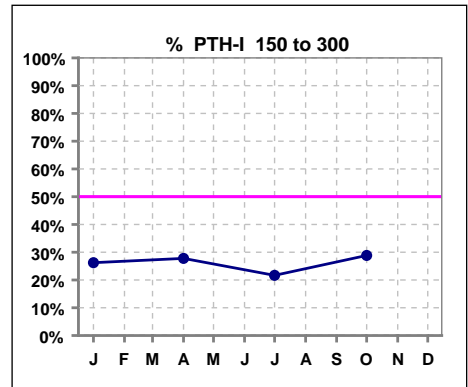
	Jan	Feb	Mar	Apr	May	Jun	Jul	Aug	Sep	Oct	Nov	Dec
# PTH-I	61			54			60			52		
# PTH-I > 400	33			24			24			18		
Pop. Mean	528			530			471			422		
Std. Deviation	491			560			506			510		
% PTH-I > 400	54%			44%			40%			35%		



	Jan	Feb	Mar	Apr	May	Jun	Jul	Aug	Sep	Oct	Nov	Dec
# PTH-I	61			54			60			52		
# PTH-I 150 to 400	19			19			20			20		
Pop. Mean	528			530			471			422		
Std. Deviation	491			560			506			510		
% PTH-I 150 to 400	31%			35%			33%			38%		



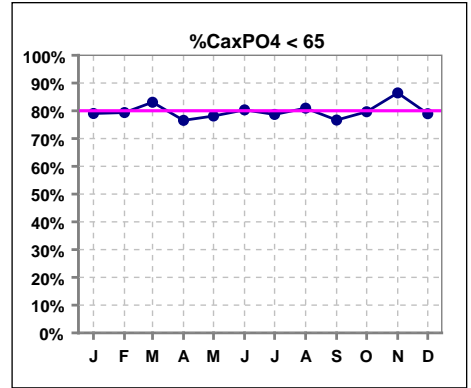
	Jan	Feb	Mar	Apr	May	Jun	Jul	Aug	Sep	Oct	Nov	Dec
# PTH-I	61			54			60			52		
# PTH-I 150 to 300	16			15			13			15		
Pop. Mean	528			530			471			422		
Std. Deviation	491			560			506			510		
% PTH-I 150 to 300	26%			28%			22%			29%		



Methodology: a) All labs for 'Adequacy of Dialysis', 'Nutrition', 'Osteodystrophy', 'Anemia' and 'Diabetes' based on last value of month; b) BP's and #L processed are average of all values for month; c) Access data takes last access of month; d) Values for SGA and 'Infection Control' use most recent result.

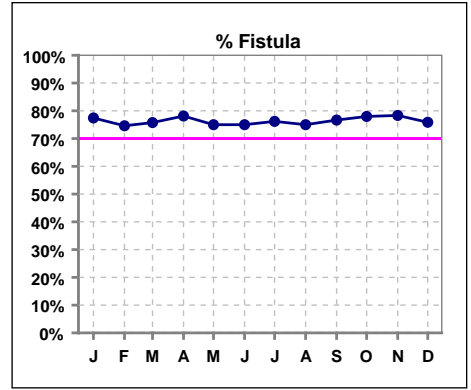
III. OSTEODYSTROPHY - CONT.

	Jan	Feb	Mar	Apr	May	Jun	Jul	Aug	Sep	Oct	Nov	Dec
# Ca x PO4	62	63	65	64	64	61	61	63	60	59	59	57
# Ca x PO4 < 65	49	50	54	49	50	49	48	51	46	47	51	45
Pop. Mean	54.4	51.9	51.3	53.1	53.6	54.0	54.6	51.7	55.8	53.4	51.5	55.3
Std. Deviation	15.0	15.1	15.5	15.1	17.7	15.6	17.7	16.1	15.1	16.4	19.0	17.1
% CaxPO4 < 65	79%	79%	83%	77%	78%	80%	79%	81%	77%	80%	86%	79%

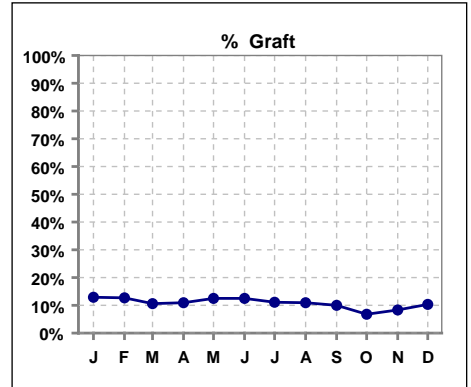


IV. ACCESS

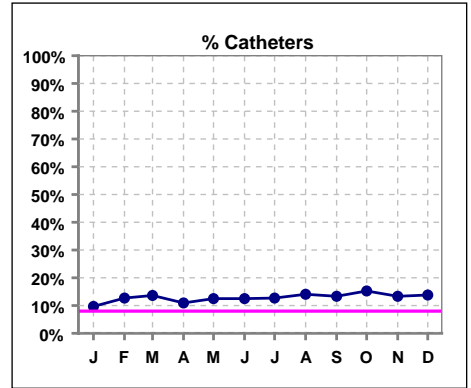
	Jan	Feb	Mar	Apr	May	Jun	Jul	Aug	Sep	Oct	Nov	Dec
# Access	62	63	66	64	64	64	63	64	60	59	60	58
# Fistula	48	47	50	50	48	48	48	48	46	46	47	44
% Fistula	77%	75%	76%	78%	75%	75%	76%	75%	77%	78%	78%	76%



	Jan	Feb	Mar	Apr	May	Jun	Jul	Aug	Sep	Oct	Nov	Dec
# Access	62	63	66	64	64	64	63	64	60	59	60	58
# Graft	8	8	7	7	8	8	7	7	6	4	5	6
% Graft	13%	13%	11%	11%	13%	13%	11%	11%	10%	7%	8%	10%



	Jan	Feb	Mar	Apr	May	Jun	Jul	Aug	Sep	Oct	Nov	Dec
# Access	62	63	66	64	64	64	63	64	60	59	60	58
# Catheters	6	8	9	7	8	8	8	9	8	9	8	8
% Catheters	10%	13%	14%	11%	13%	13%	13%	14%	13%	15%	13%	14%

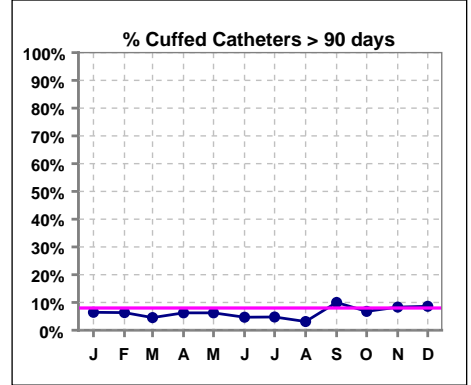


Methodology: a) All labs for 'Adequacy of Dialysis', 'Nutrition', 'Osteodystrophy', 'Anemia' and 'Diabetes' based on last value of month; b) BP's and #L processed are average of all values for month; c) Access data takes last access of month; d) Values for SGA and 'Infection Control' use most recent result.

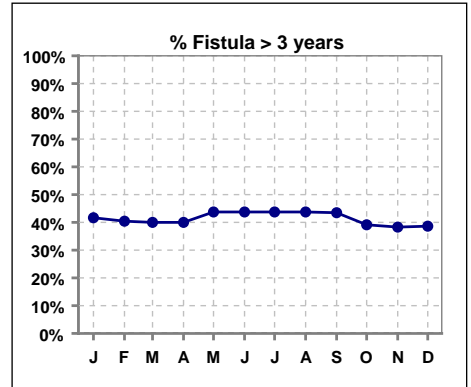
IV. ACCESS - CONT.

Cuffed Catheters > 90 days

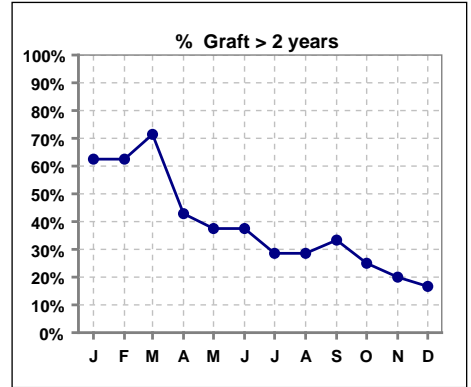
	Jan	Feb	Mar	Apr	May	Jun	Jul	Aug	Sep	Oct	Nov	Dec
# Access	62	63	66	64	64	64	63	64	60	59	60	58
# Cuffed Catheters	4	4	3	4	4	3	3	2	6	4	5	5
% Cuffed Catheters	6%	6%	5%	6%	6%	5%	5%	3%	10%	7%	8%	9%



	Jan	Feb	Mar	Apr	May	Jun	Jul	Aug	Sep	Oct	Nov	Dec
# Fistula	48	47	50	50	48	48	48	48	46	46	47	44
# Fistula > 3 yrs	20	19	20	20	21	21	21	21	20	18	18	17
% Fistula > 3 yrs	42%	40%	40%	40%	44%	44%	44%	44%	43%	39%	38%	39%



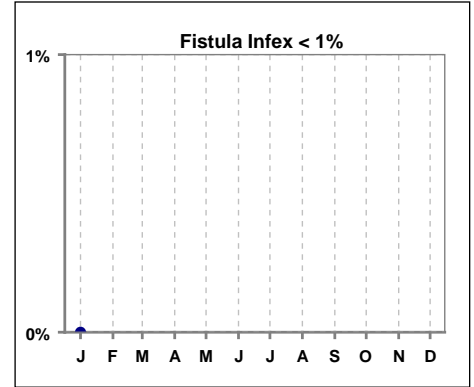
	Jan	Feb	Mar	Apr	May	Jun	Jul	Aug	Sep	Oct	Nov	Dec
# Graft	8	8	7	7	8	8	7	7	6	4	5	6
# Graft > 2 yrs	5	5	5	3	3	3	2	2	2	1	1	1
% Graft > 2 yrs	63%	63%	71%	43%	38%	38%	29%	29%	33%	25%	20%	17%



IV. ACCESS - CONT.

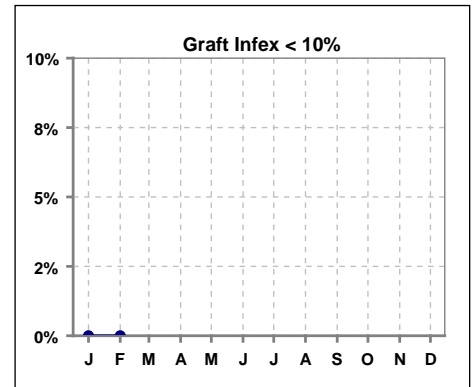
Infection per use-life of access fistula

	Jan	Feb	Mar	Apr	May	Jun	Jul	Aug	Sep	Oct	Nov	Dec
Infex per use-life	0											



Infection per use-life of access graft

	Jan	Feb	Mar	Apr	May	Jun	Jul	Aug	Sep	Oct	Nov	Dec
Infex per use-life	0	0										



Thrombosis Episode - access fistula

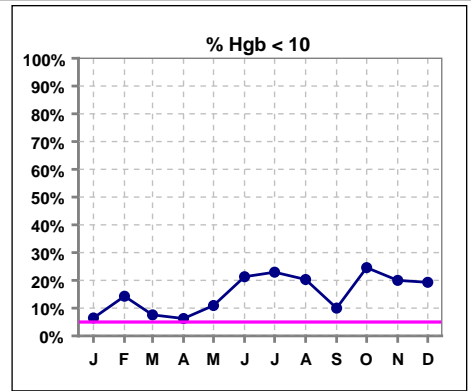
	Jan	Feb	Mar	Apr	May	Jun	Jul	Aug	Sep	Oct	Nov	Dec
Current Month										0.02	0.02	
Rolling Year-to-date	0.02	0.01	0.01	0.01	0.01	0.01	0.00	0.00	0.00	0.00	0.00	0.00

Thrombosis Episode - access graft

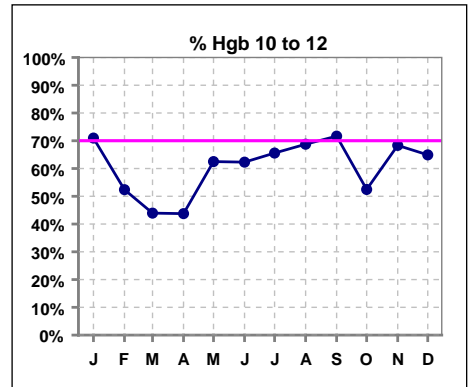
	Jan	Feb	Mar	Apr	May	Jun	Jul	Aug	Sep	Oct	Nov	Dec
Current Month												
Rolling Year-to-date	0.03	0.03	0.02	0.02	0.02	0.02	0.02	0.01				

V. ANEMIA

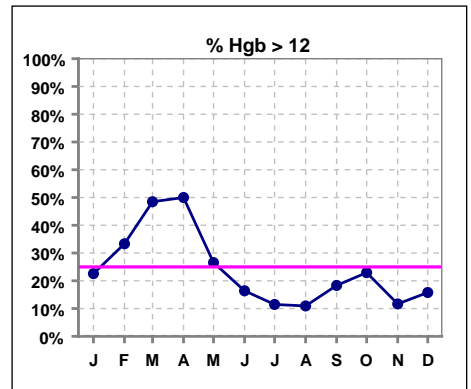
	Jan	Feb	Mar	Apr	May	Jun	Jul	Aug	Sep	Oct	Nov	Dec
# Hgb	62	63	66	64	64	61	61	64	60	61	60	57
# Hgb < 10	4	9	5	4	7	13	14	13	6	15	12	11
Pop. Mean	11.4	11.6	11.9	12.0	11.3	10.9	10.8	10.8	11.1	10.9	10.9	10.9
Std. Deviation	1.2	1.3	1.3	1.4	1.3	1.4	1.3	1.3	1.4	1.3	1.2	1.1
% Hgb < 10	6%	14%	8%	6%	11%	21%	23%	20%	10%	25%	20%	19%



	Jan	Feb	Mar	Apr	May	Jun	Jul	Aug	Sep	Oct	Nov	Dec
# Hgb	62	63	66	64	64	61	61	64	60	61	60	57
# Hgb 10 to 12	44	33	29	28	40	38	40	44	43	32	41	37
Pop. Mean	11.4	11.6	11.9	12.0	11.3	10.9	10.8	10.8	11.1	10.9	10.9	10.9
Std. Deviation	1.2	1.3	1.3	1.4	1.3	1.4	1.3	1.3	1.4	1.3	1.2	1.1
% Hgb 10 to 12	71%	52%	44%	44%	63%	62%	66%	69%	72%	52%	68%	65%

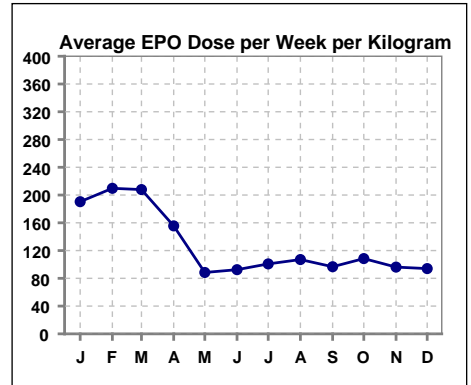


	Jan	Feb	Mar	Apr	May	Jun	Jul	Aug	Sep	Oct	Nov	Dec
# Hgb	62	63	66	64	64	61	61	64	60	61	60	57
# Hgb > 12	14	21	32	32	17	10	7	7	11	14	7	9
Pop. Mean	11.4	11.6	11.9	12.0	11.3	10.9	10.8	10.8	11.1	10.9	10.9	10.9
Std. Deviation	1.2	1.3	1.3	1.4	1.3	1.4	1.3	1.3	1.4	1.3	1.2	1.1
% Hgb > 12	23%	33%	48%	50%	27%	16%	11%	11%	18%	23%	12%	16%



Average EPO Dose per Week per Kilogram

	Jan	Feb	Mar	Apr	May	Jun	Jul	Aug	Sep	Oct	Nov	Dec
# Average EPO	190.4	209.7	207.9	155.6	88.4	92.5	100.8	107.0	96.7	108.5	96.2	94.0

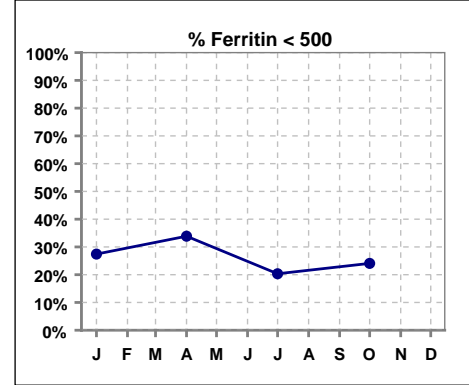


Methodology: a) All labs for 'Adequacy of Dialysis', 'Nutrition', 'Osteodystrophy', 'Anemia' and 'Diabetes' based on last value of month; b) BP's and #L processed are average of all values for month; c) Access data takes last access of month; d) Values for SGA and 'Infection Control' use most recent result.

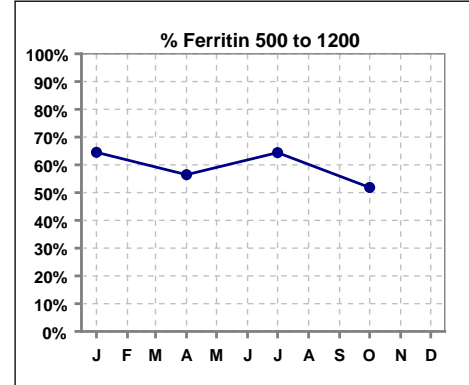
V. ANEMIA - CONT.

Iron Profile

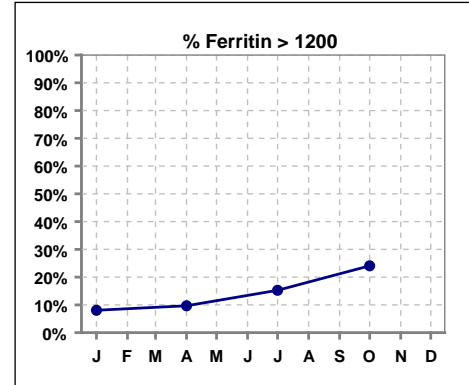
	Jan	Feb	Mar	Apr	May	Jun	Jul	Aug	Sep	Oct	Nov	Dec
# Ferritin	62			62			59			54		
# Ferritin < 500	17			21			12			13		
Pop. Mean	692			756			767			849		
Std. Deviation	350			408			347			469		
% Ferritin < 500	27%			34%			20%			24%		



	Jan	Feb	Mar	Apr	May	Jun	Jul	Aug	Sep	Oct	Nov	Dec
# Ferritin	62			62			59			54		
# Ferritin 500 to 1200	40			35			38			28		
Pop. Mean	692			756			767			849		
Std. Deviation	350			408			347			469		
% Ferritin 500 to 1200	65%			56%			64%			52%		

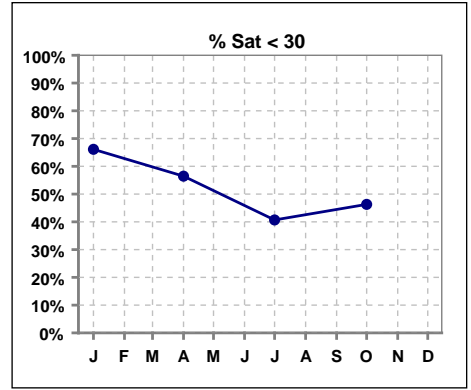


	Jan	Feb	Mar	Apr	May	Jun	Jul	Aug	Sep	Oct	Nov	Dec
# Ferritin	62			62			59			54		
# Ferritin > 1200	5			6			9			13		
Pop. Mean	692			756			767			849		
Std. Deviation	350			408			347			469		
% Ferritin > 1200	8%			10%			15%			24%		

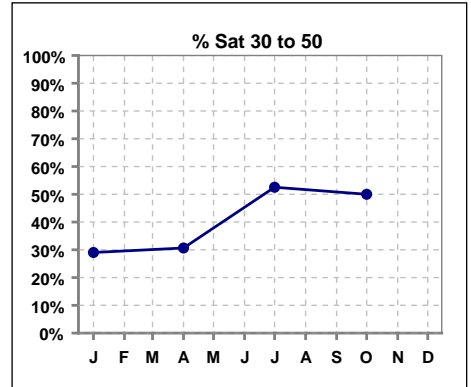


V. ANEMIA - CONT.

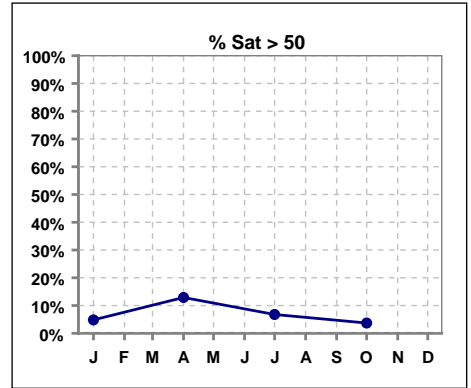
	Jan	Feb	Mar	Apr	May	Jun	Jul	Aug	Sep	Oct	Nov	Dec
# % Sat	62			62			59			54		
# % Sat < 30	41			35			24			25		
Pop. Mean	28			34			34			32		
Std. Deviation	12			18			11			13		
% % Sat < 30	66%			56%			41%			46%		



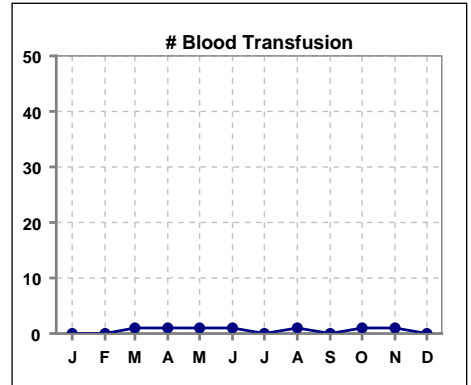
	Jan	Feb	Mar	Apr	May	Jun	Jul	Aug	Sep	Oct	Nov	Dec
# % Sat	62			62			59			54		
# % Sat 30 to 50	18			19			31			27		
Pop. Mean	28			34			34			32		
Std. Deviation	12			18			11			13		
% % Sat 30 to 50	29%			31%			53%			50%		



	Jan	Feb	Mar	Apr	May	Jun	Jul	Aug	Sep	Oct	Nov	Dec
# % Sat	62			62			59			54		
# % Sat > 50	3			8			4			2		
Pop. Mean	28			34			34			32		
Std. Deviation	12			18			11			13		
% % Sat > 50	5%			13%			7%			4%		



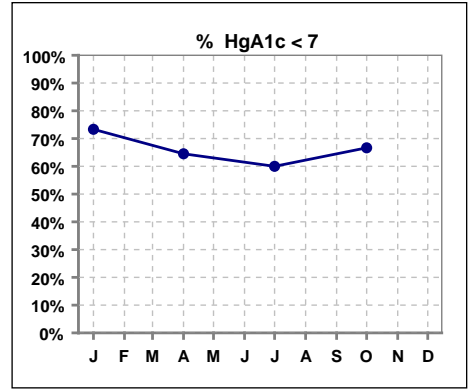
	Jan	Feb	Mar	Apr	May	Jun	Jul	Aug	Sep	Oct	Nov	Dec
# Blood Transfusion	0	0	1	1	1	1	0	1	0	1	1	0



Methodology: a) All labs for 'Adequacy of Dialysis', 'Nutrition', 'Osteodystrophy', 'Anemia' and 'Diabetes' based on last value of month; b) BP's and #L processed are average of all values for month; c) Access data takes last access of month; d) Values for SGA and 'Infection Control' use most recent result.

VI. Diabetes

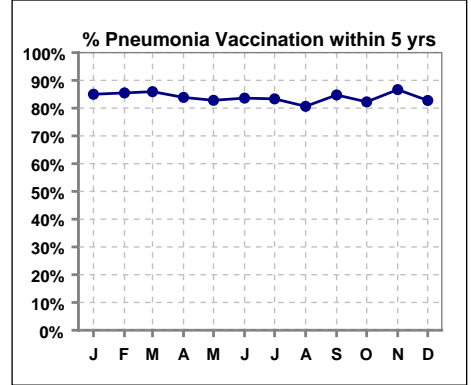
	Jan	Feb	Mar	Apr	May	Jun	Jul	Aug	Sep	Oct	Nov	Dec
# HgA1c	30			31			30			30		
# HgA1c < 7	22			20			18			20		
Pop. Mean	6.6			6.9			6.9			6.8		
Std. Deviation	1.22			1.43			1.19			1.15		
% HgA1c < 7	73%			65%			60%			67%		



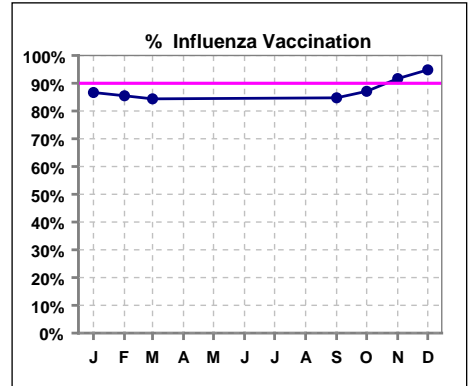
VII. Infection Control

Pneumonia vaccination within the past five years

	Jan	Feb	Mar	Apr	May	Jun	Jul	Aug	Sep	Oct	Nov	Dec
# Patient	60	62	64	62	64	61	60	62	59	62	60	58
# Pneumonia	51	53	55	52	53	51	50	50	50	51	52	48
% Pneumonia	85%	85%	86%	84%	83%	84%	83%	81%	85%	82%	87%	83%



	Jan	Feb	Mar	Apr	May	Jun	Jul	Aug	Sep	Oct	Nov	Dec
# Patient	60	62	64						59	62	60	58
# Influenza	52	53	54						50	54	55	55
% Influenza	87%	85%	84%						85%	87%	92%	95%



Methodology: a) All labs for 'Adequacy of Dialysis', 'Nutrition', 'Osteodystrophy', 'Anemia' and 'Diabetes' based on last value of month; b) BP's and #L processed are average of all values for month; c) Access data takes last access of month; d) Values for SGA and 'Infection Control' use most recent result.