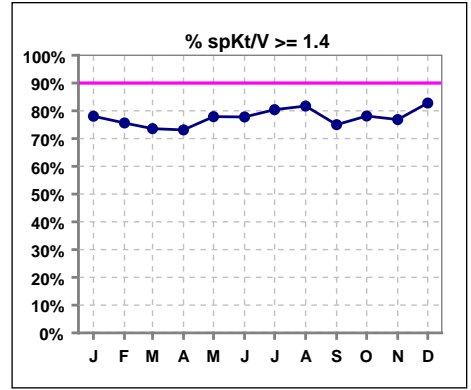
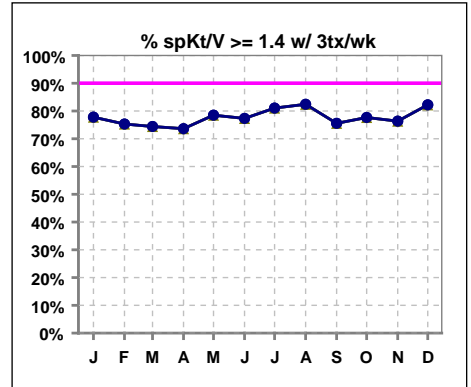


**I. ADEQUACY OF DIALYSIS**

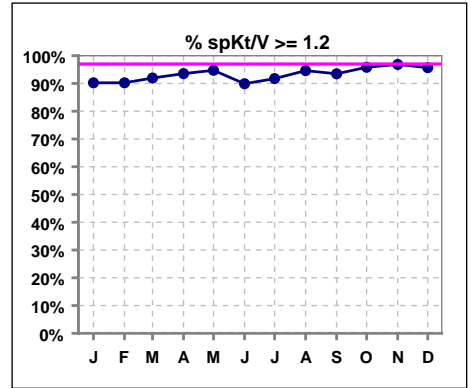
	Jan	Feb	Mar	Apr	May	Jun	Jul	Aug	Sep	Oct	Nov	Dec
# spKt/V	82	82	87	93	95	99	97	93	92	96	95	93
# spKt/V >= 1.4	64	62	64	68	74	77	78	76	69	75	73	77
Pop. Mean	1.61	1.61	1.59	1.55	1.59	1.59	1.65	1.61	1.61	1.61	1.63	1.61
Std. Deviation	0.33	0.31	0.32	0.29	0.27	0.32	0.50	0.28	0.32	0.28	0.31	0.26
% spKt/V >= 1.4	78%	76%	74%	73%	78%	78%	80%	82%	75%	78%	77%	83%



	Jan	Feb	Mar	Apr	May	Jun	Jul	Aug	Sep	Oct	Nov	Dec
# spKt/V w/ 3tx/wk	81	81	86	91	93	97	95	91	90	94	93	90
# spKt/V >= 1.4 w/3tx/wk	63	61	64	67	73	75	77	75	68	73	71	74
Pop. Mean	1.61	1.61	1.59	1.56	1.60	1.60	1.65	1.62	1.61	1.61	1.63	1.61
Std. Deviation	0.33	0.31	0.32	0.29	0.27	0.33	0.50	0.28	0.32	0.29	0.32	0.26
% >= 1.4 w/3tx/wk	78%	75%	74%	74%	78%	77%	81%	82%	76%	78%	76%	82%



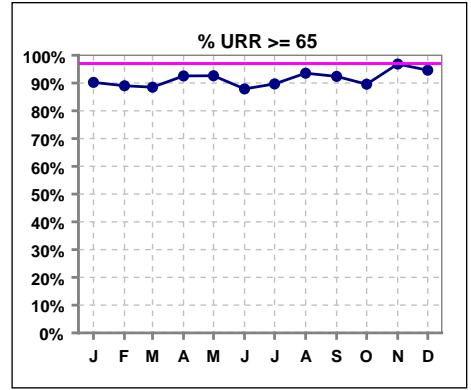
	Jan	Feb	Mar	Apr	May	Jun	Jul	Aug	Sep	Oct	Nov	Dec
# spKt/V	82	82	87	93	95	99	97	93	92	96	95	93
# spKt/V >= 1.2	74	74	80	87	90	89	89	88	86	92	92	89
Pop. Mean	1.61	1.61	1.59	1.55	1.59	1.59	1.65	1.61	1.61	1.61	1.63	1.61
Std. Deviation	0.33	0.31	0.32	0.29	0.27	0.32	0.50	0.28	0.32	0.28	0.31	0.26
% spKt/V >= 1.2	90%	90%	92%	94%	95%	90%	92%	95%	93%	96%	97%	96%



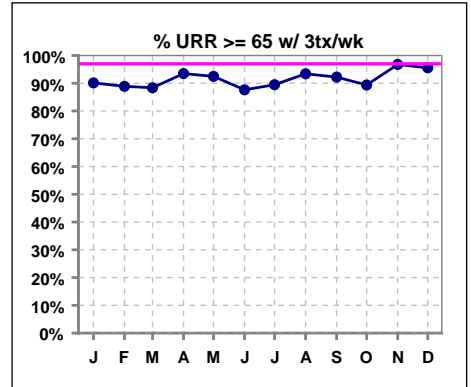
Methodology: a) All labs for 'Adequacy of Dialysis', 'Nutrition', 'Osteodystrophy', 'Anemia' and 'Diabetes' based on last value of month; b) BP's and #L processed are average of all values for month; c) Access data takes last access of month; d) Values for SGA and 'Infection Control' use most recent result.

**I. ADEQUACY OF DIALYSIS - CONT.**

	Jan	Feb	Mar	Apr	May	Jun	Jul	Aug	Sep	Oct	Nov	Dec
# URR	82	82	87	94	95	99	97	93	92	96	95	93
# URR >= 65	74	73	77	87	88	87	87	87	85	86	92	88
Pop. Mean	74	74	74	73	74	74	74	74	74	74	75	75
Std. Deviation	7.00	6.84	7.30	6.42	5.97	7.69	7.54	6.17	7.38	6.34	6.40	5.84
% URR >= 65	90%	89%	89%	93%	93%	88%	90%	94%	92%	90%	97%	95%



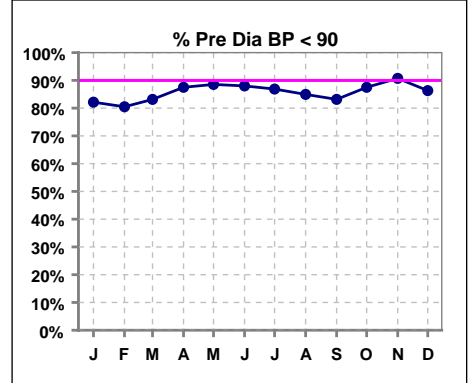
	Jan	Feb	Mar	Apr	May	Jun	Jul	Aug	Sep	Oct	Nov	Dec
# URR w/ 3tx/wk	81	81	86	92	93	97	95	91	90	94	93	90
# URR>=65 w/ 3tx/wk	73	72	76	86	86	85	85	85	83	84	90	86
Pop. Mean	74	74	74	73	74	74	74	74	74	74	75	75
Std. Deviation	7.05	6.89	7.35	6.42	5.97	7.75	7.59	6.20	7.44	6.40	6.43	5.82
% URR>=65 w/ 3tx/wk	90%	89%	88%	93%	92%	88%	89%	93%	92%	89%	97%	96%



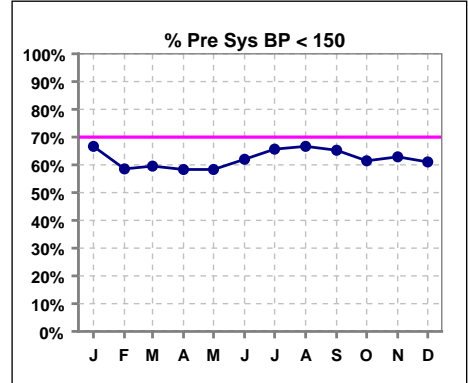
**I. ADEQUACY OF DIALYSIS - CONT.**

**Blood Pressure Control (Pre)**

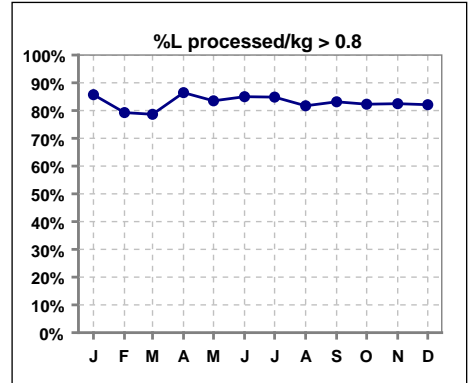
	Jan	Feb	Mar	Apr	May	Jun	Jul	Aug	Sep	Oct	Nov	Dec
# Pre Dia BP	84	82	89	96	96	100	99	93	95	96	97	95
# Pre Dia BP < 90	69	66	74	84	85	88	86	79	79	84	88	82
Pop. Mean	75	76	76	74	74	74	73	74	74	74	73	74
Std. Deviation	14.6	14.4	13.8	14.8	13.8	13.9	13.2	15.2	15.5	13.6	14.4	14.0
% Pre Dia BP < 90	82%	80%	83%	88%	89%	88%	87%	85%	83%	88%	91%	86%



	Jan	Feb	Mar	Apr	May	Jun	Jul	Aug	Sep	Oct	Nov	Dec
# Pre Sys BP	84	82	89	96	96	100	99	93	95	96	97	95
# Pre Sys BP < 150	56	48	53	56	56	62	65	62	62	59	61	58
Pop. Mean	142	144	145	142	141	142	138	138	140	141	139	141
Std. Deviation	23.3	23.5	23.2	23.0	21.1	21.0	22.0	23.5	23.9	22.0	22.8	22.0
%Pre Sys BP <150	67%	59%	60%	58%	58%	62%	66%	67%	65%	61%	63%	61%



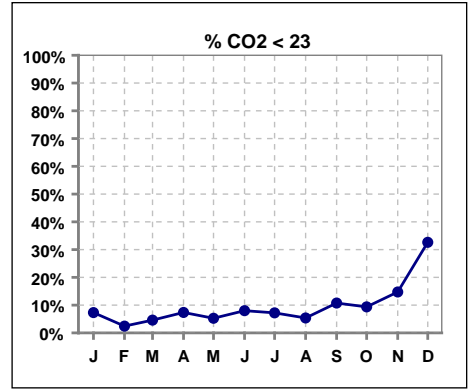
	Jan	Feb	Mar	Apr	May	Jun	Jul	Aug	Sep	Oct	Nov	Dec
# L processed/kg	84	82	89	96	97	100	99	93	95	96	97	95
# L processed/kg>0.8	72	65	70	83	81	85	84	76	79	79	80	78
Pop. Mean	1	1	1	1	1	1	1	1	1	1	1	1
Std. Deviation	0.2	0.3	0.2	0.2	0.2	0.2	0.2	0.2	0.2	0.2	0.2	0.2
% L processed/kg>0.8	86%	79%	79%	86%	84%	85%	85%	82%	83%	82%	82%	82%



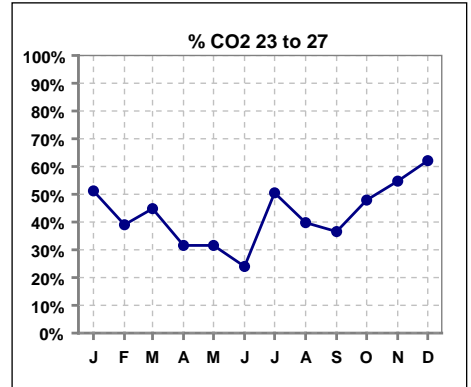
Methodology: a) All labs for 'Adequacy of Dialysis', 'Nutrition', 'Osteodystrophy', 'Anemia' and 'Diabetes' based on last value of month; b) BP's and #L processed are average of all values for month; c) Access data takes last access of month; d) Values for SGA and 'Infection Control' use most recent result.

**I. ADEQUACY OF DIALYSIS - CONT.**

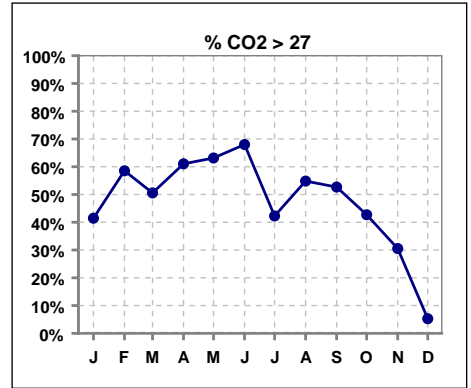
	Jan	Feb	Mar	Apr	May	Jun	Jul	Aug	Sep	Oct	Nov	Dec
# CO2	82	82	87	95	95	100	97	93	93	96	95	95
# CO2 < 23	6	2	4	7	5	8	7	5	10	9	14	31
Pop. Mean	27	28	27	28	28	28	27	28	27	27	26	24
Std. Deviation	3.55	2.63	2.86	3.47	3.19	3.36	3.51	3.25	3.85	3.04	3.54	3.24
% CO2 < 23	7%	2%	5%	7%	5%	8%	7%	5%	11%	9%	15%	33%



	Jan	Feb	Mar	Apr	May	Jun	Jul	Aug	Sep	Oct	Nov	Dec
# CO2	82	82	87	95	95	100	97	93	93	96	95	95
# CO2 23 to 27	42	32	39	30	30	24	49	37	34	46	52	59
Pop. Mean	27	28	27	28	28	28	27	28	27	27	26	24
Std. Deviation	3.55	2.63	2.86	3.47	3.19	3.36	3.51	3.25	3.85	3.08	3.54	3.24
% CO2 23 to 27	51%	39%	45%	32%	32%	24%	51%	40%	37%	48%	55%	62%



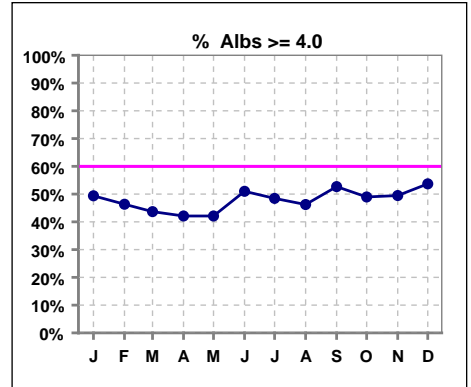
	Jan	Feb	Mar	Apr	May	Jun	Jul	Aug	Sep	Oct	Nov	Dec
# CO2	82	82	87	95	95	100	97	93	93	96	95	95
# CO2 > 27	34	48	44	58	60	68	41	51	49	41	29	5
Pop. Mean	27	28	27	28	28	28	27	28	27	27	26	24
Std. Deviation	3.55	2.63	2.86	3.47	3.19	3.36	3.51	3.25	3.85	3.08	3.54	3.24
% CO2 > 27	41%	59%	51%	61%	63%	68%	42%	55%	53%	43%	31%	5%



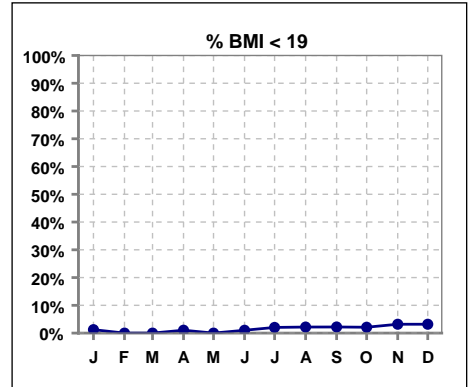
\*Albumin values use BCG method - as of July 2001

**II. NUTRITION**

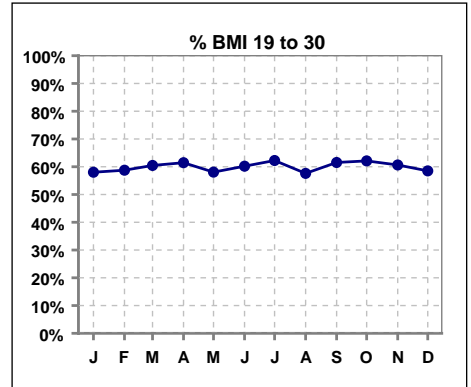
	Jan	Feb	Mar	Apr	May	Jun	Jul	Aug	Sep	Oct	Nov	Dec
# Albumin	81	82	87	95	95	100	97	93	93	96	95	95
# Albumin >= 4.0	40	38	38	40	40	51	47	43	49	47	47	51
Pop. Mean	3.9	3.8	3.8	3.8	3.8	3.9	3.8	3.8	3.9	3.9	3.9	3.9
Std. Deviation	0.50	0.51	0.46	0.51	0.56	0.48	0.52	0.46	0.50	0.40	0.41	0.45
% Alb >= 3.5	83%	83%	82%	78%	81%	81%	81%	81%	88%	86%	86%	86%
% Alb >= 3.0	94%	93%	94%	93%	89%	93%	92%	95%	95%	98%	98%	98%
% Alb >= 4.0	49%	46%	44%	42%	42%	51%	48%	46%	53%	49%	49%	54%



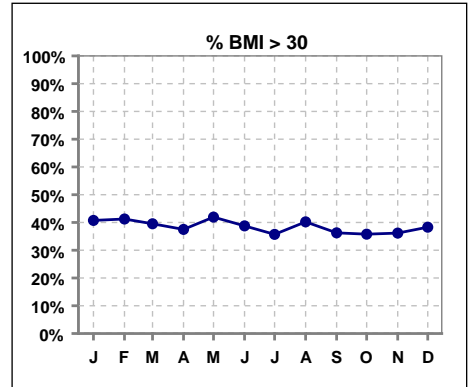
	Jan	Feb	Mar	Apr	May	Jun	Jul	Aug	Sep	Oct	Nov	Dec
# BMI	81	80	86	96	93	98	98	92	91	95	94	94
# BMI < 19	1	0	0	1	0	1	2	2	2	2	3	3
Pop. Mean	30	30	30	29	30	30	29	30	29	29	29	29
Std. Deviation	8.4	7.8	8.4	8.0	8.1	8.6	8.4	8.8	8.3	8.3	8.5	8.1
% BMI < 19	1%	0%	0%	1%	0%	1%	2%	2%	2%	2%	3%	3%



	Jan	Feb	Mar	Apr	May	Jun	Jul	Aug	Sep	Oct	Nov	Dec
# BMI	81	80	86	96	93	98	98	92	91	95	94	94
# BMI 19 to 30	47	47	52	59	54	59	61	53	56	59	57	55
Pop. Mean	30	30	30	29	30	30	29	30	29	29	29	29
Std. Deviation	8.4	7.8	8.4	8.0	8.1	8.6	8.4	8.8	8.3	8.3	8.5	8.1
% BMI 19 to 30	58%	59%	60%	61%	58%	60%	62%	58%	62%	62%	61%	59%



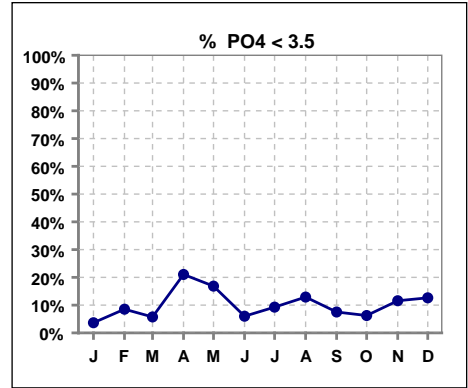
	Jan	Feb	Mar	Apr	May	Jun	Jul	Aug	Sep	Oct	Nov	Dec
# BMI	81	80	86	96	93	98	98	92	91	95	94	94
# BMI > 30	33	33	34	36	39	38	35	37	33	34	34	36
Pop. Mean	30	30	30	29	30	30	29	30	29	29	29	29
Std. Deviation	8.4	7.8	8.4	8.0	8.1	8.6	8.4	8.8	8.3	8.3	8.5	8.1
% BMI > 30	41%	41%	40%	38%	42%	39%	36%	40%	36%	36%	36%	38%



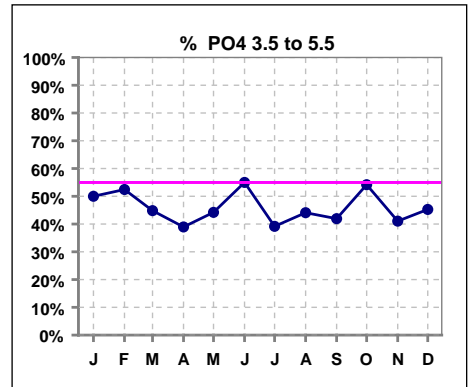
Methodology: a) All labs for 'Adequacy of Dialysis', 'Nutrition', 'Osteodystrophy', 'Anemia' and 'Diabetes' based on last value of month; b) BP's and #L processed are average of all values for month; c) Access data takes last access of month; d) Values for SGA and 'Infection Control' use most recent result.

**III. OSTEODYSTROPHY**

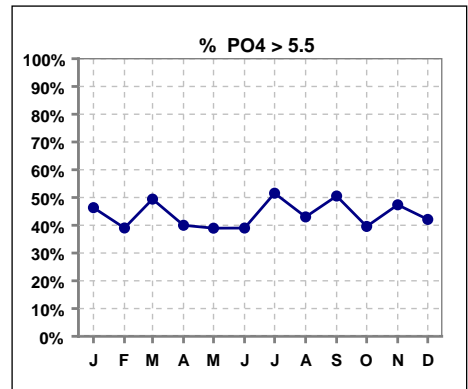
	Jan	Feb	Mar	Apr	May	Jun	Jul	Aug	Sep	Oct	Nov	Dec
# PO4	82	82	87	95	95	100	97	93	93	96	95	95
# PO4 < 3.5	3	7	5	20	16	6	9	12	7	6	11	12
Pop. Mean	5.8	5.5	5.6	5.1	5.3	5.5	5.8	5.4	5.5	5.3	5.6	5.5
Std. Deviation	1.74	1.79	1.68	1.72	1.81	1.67	2.15	1.86	1.78	1.67	1.89	1.94
% PO4 < 3.5	4%	9%	6%	21%	17%	6%	9%	13%	8%	6%	12%	13%



	Jan	Feb	Mar	Apr	May	Jun	Jul	Aug	Sep	Oct	Nov	Dec
# PO4	82	82	87	95	95	100	97	93	93	96	95	95
# PO4 3.5 to 5.5	41	43	39	37	42	55	38	41	39	52	39	43
Pop. Mean	5.8	5.5	5.6	5.1	5.3	5.5	5.8	5.4	5.5	5.3	5.6	5.5
Std. Deviation	1.74	1.79	1.68	1.72	1.81	1.67	2.15	1.86	1.78	1.71	1.89	1.94
% PO4 3.5 to 5.5	50%	52%	45%	39%	44%	55%	39%	44%	42%	54%	41%	45%



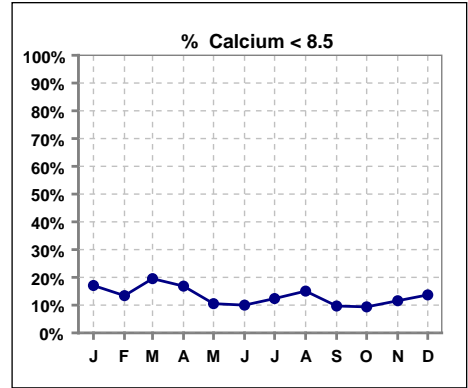
	Jan	Feb	Mar	Apr	May	Jun	Jul	Aug	Sep	Oct	Nov	Dec
# PO4	82	82	87	95	95	100	97	93	93	96	95	95
# PO4 > 5.5	38	32	43	38	37	39	50	40	47	38	45	40
Pop. Mean	5.8	5.5	5.6	5.1	5.3	5.5	5.8	5.4	5.5	5.3	5.6	5.5
Std. Deviation	1.74	1.79	1.68	1.72	1.81	1.67	2.15	1.86	1.78	1.71	1.89	1.94
% PO4 > 5.5	46%	39%	49%	40%	39%	39%	52%	43%	51%	40%	47%	42%



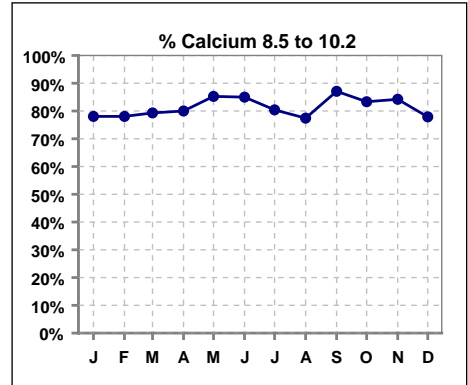
Methodology: a) All labs for 'Adequacy of Dialysis', 'Nutrition', 'Osteodystrophy', 'Anemia' and 'Diabetes' based on last value of month; b) BP's and #L processed are average of all values for month; c) Access data takes last access of month; d) Values for SGA and 'Infection Control' use most recent result.

**III. OSTEODYSTROPHY - CONT.**

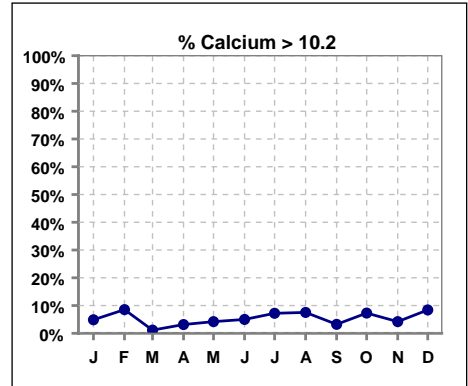
	Jan	Feb	Mar	Apr	May	Jun	Jul	Aug	Sep	Oct	Nov	Dec
# Calcium	82	82	87	95	95	100	97	93	93	96	95	95
# Calcium < 8.5	14	11	17	16	10	10	12	14	9	9	11	13
Pop. Mean	9.1	9.2	9.0	9.0	9.2	9.2	9.3	9.3	9.2	9.2	9.1	9.2
Std. Deviation	0.75	0.84	0.68	0.68	0.78	0.65	0.79	0.76	0.61	0.75	0.64	0.68
<b>% Calcium &lt; 8.5</b>	<b>17%</b>	<b>13%</b>	<b>20%</b>	<b>17%</b>	<b>11%</b>	<b>10%</b>	<b>12%</b>	<b>15%</b>	<b>10%</b>	<b>9%</b>	<b>12%</b>	<b>14%</b>



	Jan	Feb	Mar	Apr	May	Jun	Jul	Aug	Sep	Oct	Nov	Dec
# Calcium	82	82	87	95	95	100	97	93	93	96	95	95
# Calcium 8.5 to 10.2	64	64	69	76	81	85	78	72	81	80	80	74
Pop. Mean	9.1	9.2	9.0	9.0	9.2	9.2	9.3	9.3	9.2	9.3	9.1	9.2
Std. Deviation	0.75	0.84	0.68	0.68	0.78	0.65	0.79	0.76	0.61	0.75	0.64	0.68
<b>% Calcium 8.5 to 10.2</b>	<b>78%</b>	<b>78%</b>	<b>79%</b>	<b>80%</b>	<b>85%</b>	<b>85%</b>	<b>80%</b>	<b>77%</b>	<b>87%</b>	<b>83%</b>	<b>84%</b>	<b>78%</b>



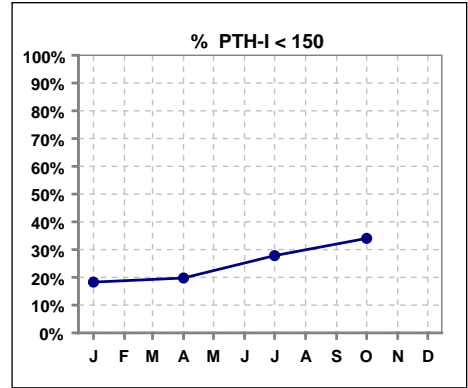
	Jan	Feb	Mar	Apr	May	Jun	Jul	Aug	Sep	Oct	Nov	Dec
# Calcium	82	82	87	95	95	100	97	93	93	96	95	95
# Calcium > 10.2	4	7	1	3	4	5	7	7	3	7	4	8
Pop. Mean	9.1	9.2	9.0	9.0	9.2	9.2	9.3	9.3	9.2	9.3	9.1	9.2
Std. Deviation	0.75	0.84	0.68	0.68	0.78	0.65	0.79	0.76	0.61	0.75	0.64	0.68
<b>% Calcium &gt; 10.2</b>	<b>5%</b>	<b>9%</b>	<b>1%</b>	<b>3%</b>	<b>4%</b>	<b>5%</b>	<b>7%</b>	<b>8%</b>	<b>3%</b>	<b>7%</b>	<b>4%</b>	<b>8%</b>



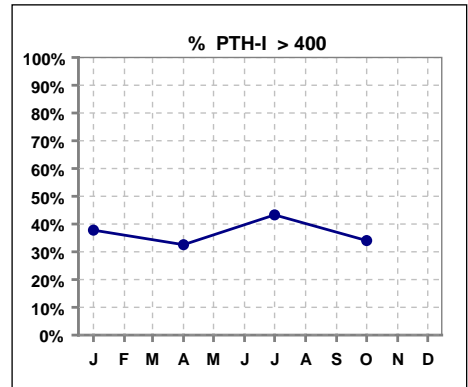
Methodology: a) All labs for 'Adequacy of Dialysis', 'Nutrition', 'Osteodystrophy', 'Anemia' and 'Diabetes' based on last value of month; b) BP's and #L processed are average of all values for month; c) Access data takes last access of month; d) Values for SGA and 'Infection Control' use most recent result.

**III. OSTEODYSTROPHY - CONT.**

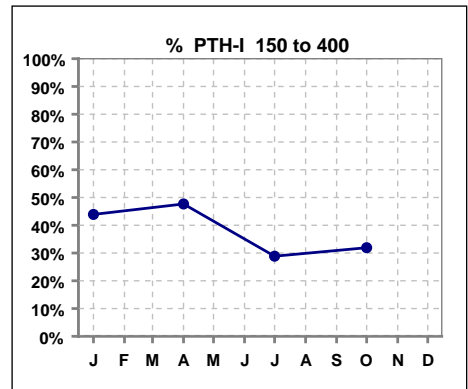
	Jan	Feb	Mar	Apr	May	Jun	Jul	Aug	Sep	Oct	Nov	Dec
# PTH-I	82			86			97			94		
# PTH-I < 150	15			17			27			32		
Pop. Mean	557			513			467			461		
Std. Deviation	643			569			547			619		
% PTH-I < 150	18%			20%			28%			34%		



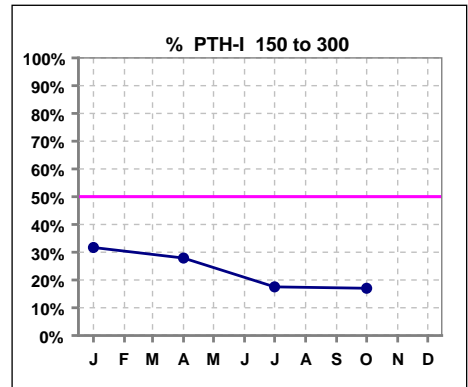
	Jan	Feb	Mar	Apr	May	Jun	Jul	Aug	Sep	Oct	Nov	Dec
# PTH-I	82			86			97			94		
# PTH-I > 400	31			28			42			32		
Pop. Mean	557			513			467			461		
Std. Deviation	643			569			547			619		
% PTH-I > 400	38%			33%			43%			34%		



	Jan	Feb	Mar	Apr	May	Jun	Jul	Aug	Sep	Oct	Nov	Dec
# PTH-I	82			86			97			94		
# PTH-I 150 to 400	36			41			28			30		
Pop. Mean	557			513			467			461		
Std. Deviation	643			569			547			619		
% PTH-I 150 to 400	44%			48%			29%			32%		



	Jan	Feb	Mar	Apr	May	Jun	Jul	Aug	Sep	Oct	Nov	Dec
# PTH-I	82			86			97			94		
# PTH-I 150 to 300	26			24			17			16		
Pop. Mean	557			513			467			461		
Std. Deviation	643			569			547			619		
% PTH-I 150 to 300	32%			28%			18%			17%		

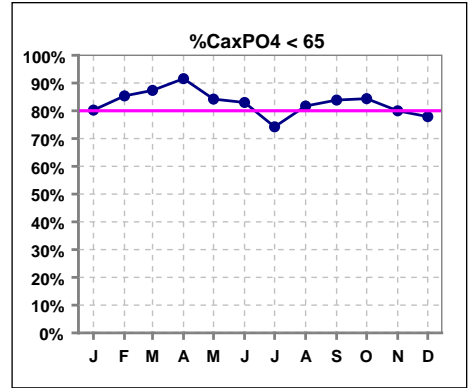


Methodology: a) All labs for 'Adequacy of Dialysis', 'Nutrition', 'Osteodystrophy', 'Anemia' and 'Diabetes' based on last value of month; b) BP's and #L processed are average of all values for month; c) Access data takes last access of month; d) Values for SGA and 'Infection Control' use most recent result.



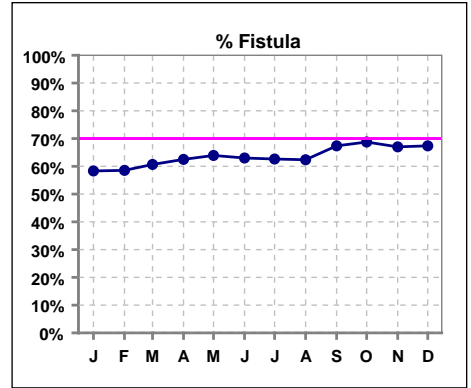
**III. OSTEODYSTROPHY - CONT.**

	Jan	Feb	Mar	Apr	May	Jun	Jul	Aug	Sep	Oct	Nov	Dec
# Ca x PO4	81	82	87	95	95	100	97	93	93	96	95	95
# Ca x PO4 < 65	65	70	76	87	80	83	72	76	78	81	76	74
Pop. Mean	52.6	50.0	49.9	45.3	48.3	50.2	53.2	50.4	50.3	49.2	51.4	50.9
Std. Deviation	15.2	15.6	14.6	14.7	16.1	14.3	19.7	17.2	16.3	16.2	17.6	17.8
<b>% Ca x PO4 &lt; 65</b>	<b>80%</b>	<b>85%</b>	<b>87%</b>	<b>92%</b>	<b>84%</b>	<b>83%</b>	<b>74%</b>	<b>82%</b>	<b>84%</b>	<b>84%</b>	<b>80%</b>	<b>78%</b>

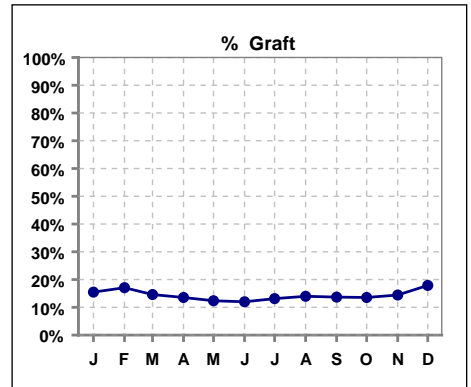


**IV. ACCESS**

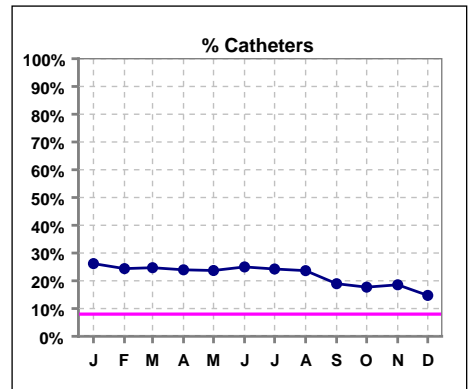
	Jan	Feb	Mar	Apr	May	Jun	Jul	Aug	Sep	Oct	Nov	Dec
<b># Access</b>	84	82	89	96	97	100	99	93	95	96	97	95
<b># Fistula</b>	49	48	54	60	62	63	62	58	64	66	65	64
<b>% Fistula</b>	58%	59%	61%	63%	64%	63%	63%	62%	67%	69%	67%	67%



	Jan	Feb	Mar	Apr	May	Jun	Jul	Aug	Sep	Oct	Nov	Dec
<b># Access</b>	84	82	89	96	97	100	99	93	95	96	97	95
<b># Graft</b>	13	14	13	13	12	12	13	13	13	13	14	17
<b>% Graft</b>	15%	17%	15%	14%	12%	12%	13%	14%	14%	14%	14%	18%



	Jan	Feb	Mar	Apr	May	Jun	Jul	Aug	Sep	Oct	Nov	Dec
<b># Access</b>	84	82	89	96	97	100	99	93	95	96	97	95
<b># Catheters</b>	22	20	22	23	23	25	24	22	18	17	18	14
<b>% Catheters</b>	26%	24%	25%	24%	24%	25%	24%	24%	19%	18%	19%	15%

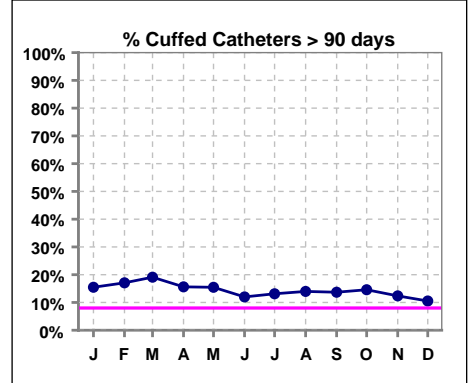


Methodology: a) All labs for 'Adequacy of Dialysis', 'Nutrition', 'Osteodystrophy', 'Anemia' and 'Diabetes' based on last value of month; b) BP's and #L processed are average of all values for month; c) Access data takes last access of month; d) Values for SGA and 'Infection Control' use most recent result.

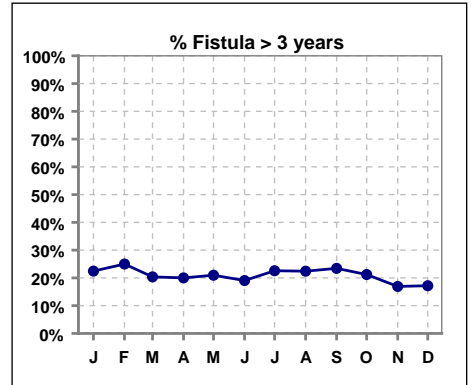
**IV. ACCESS - CONT.**

**Cuffed Catheters > 90 days**

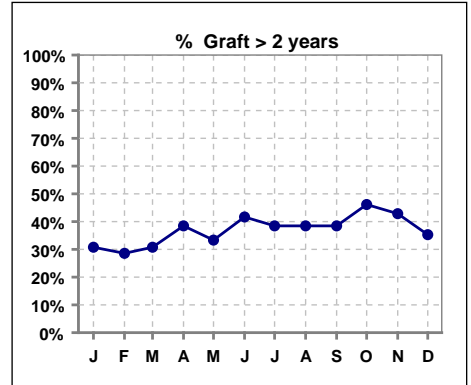
	Jan	Feb	Mar	Apr	May	Jun	Jul	Aug	Sep	Oct	Nov	Dec
# Access	84	82	89	96	97	100	99	93	95	96	97	95
# Cuffed Catheters	13	14	17	15	15	12	13	13	13	14	12	10
% Cuffed Catheters	15%	17%	19%	16%	15%	12%	13%	14%	14%	15%	12%	11%



	Jan	Feb	Mar	Apr	May	Jun	Jul	Aug	Sep	Oct	Nov	Dec
# Fistula	49	48	54	60	62	63	62	58	64	66	65	64
# Fistula > 3 yrs	11	12	11	12	13	12	14	13	15	14	11	11
% Fistula > 3 yrs	22%	25%	20%	20%	21%	19%	23%	22%	23%	21%	17%	17%



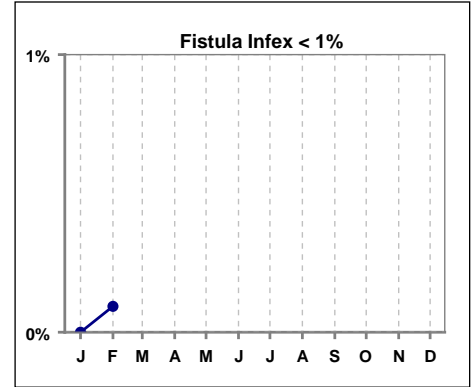
	Jan	Feb	Mar	Apr	May	Jun	Jul	Aug	Sep	Oct	Nov	Dec
# Graft	13	14	13	13	12	12	13	13	13	13	14	17
# Graft > 2 yrs	4	4	4	5	4	5	5	5	5	6	6	6
% Graft > 2 yrs	31%	29%	31%	38%	33%	42%	38%	38%	38%	46%	43%	35%



**IV. ACCESS - CONT.**

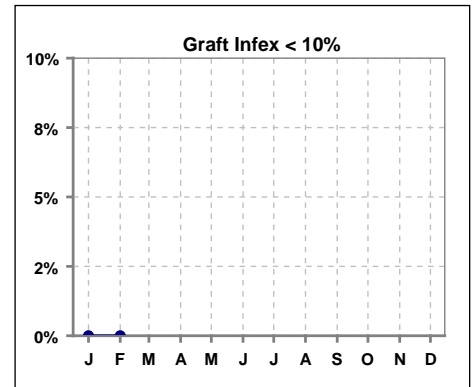
**Infection per use-life of access fistula**

	Jan	Feb	Mar	Apr	May	Jun	Jul	Aug	Sep	Oct	Nov	Dec
<b>Infex per use-life</b>	00.0932											



**Infection per use-life of access graft**

	Jan	Feb	Mar	Apr	May	Jun	Jul	Aug	Sep	Oct	Nov	Dec
<b>Infex per use-life</b>	0	0										



**Thrombosis Episode - access fistula**

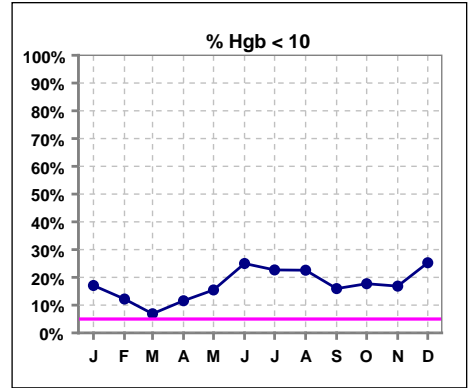
	Jan	Feb	Mar	Apr	May	Jun	Jul	Aug	Sep	Oct	Nov	Dec
<b>Current Month</b>												
<b>Rolling Year-to-date</b>	0.02	0.01	0.01	0.01	0.01	0.00	0.00				0.00	0.00

**Thrombosis Episode - access graft**

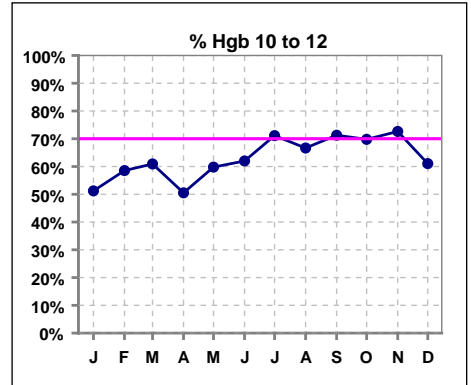
	Jan	Feb	Mar	Apr	May	Jun	Jul	Aug	Sep	Oct	Nov	Dec
<b>Current Month</b>		0.12										
<b>Rolling Year-to-date</b>	0.06	0.05	0.05	0.04	0.03	0.03	0.03	0.02	0.01	0.01	0.01	0.01

**V. ANEMIA**

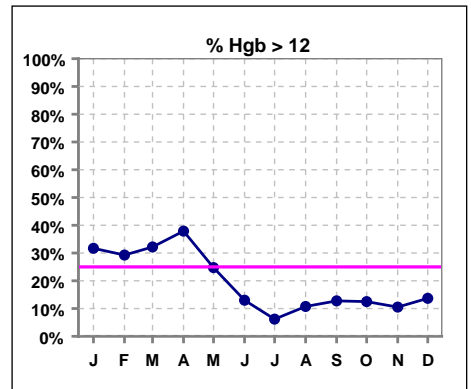
	Jan	Feb	Mar	Apr	May	Jun	Jul	Aug	Sep	Oct	Nov	Dec
# Hgb	82	82	87	95	97	100	97	93	94	96	95	95
# Hgb < 10	14	10	6	11	15	25	22	21	15	17	16	24
Pop. Mean	11.3	11.5	11.7	11.6	11.2	10.7	10.6	10.7	10.9	11.0	10.9	10.8
Std. Deviation	1.5	1.6	1.3	1.5	1.5	1.4	1.2	1.1	1.3	1.2	1.2	1.4
% Hgb < 10	17%	12%	7%	12%	15%	25%	23%	23%	16%	18%	17%	25%



	Jan	Feb	Mar	Apr	May	Jun	Jul	Aug	Sep	Oct	Nov	Dec
# Hgb	82	82	87	95	97	100	97	93	94	96	95	95
# Hgb 10 to 12	42	48	53	48	58	62	69	62	67	67	69	58
Pop. Mean	11.3	11.5	11.7	11.6	11.2	10.7	10.6	10.7	10.9	11.0	10.9	10.8
Std. Deviation	1.5	1.6	1.3	1.5	1.5	1.4	1.2	1.1	1.3	1.2	1.2	1.4
% Hgb 10 to 12	51%	59%	61%	51%	60%	62%	71%	67%	71%	70%	73%	61%

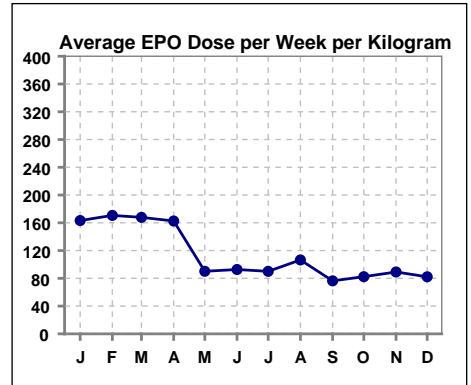


	Jan	Feb	Mar	Apr	May	Jun	Jul	Aug	Sep	Oct	Nov	Dec
# Hgb	82	82	87	95	97	100	97	93	94	96	95	95
# Hgb > 12	26	24	28	36	24	13	6	10	12	12	10	13
Pop. Mean	11.3	11.5	11.7	11.6	11.2	10.7	10.6	10.7	10.9	11.0	10.9	10.8
Std. Deviation	1.5	1.6	1.3	1.5	1.5	1.4	1.2	1.1	1.3	1.2	1.2	1.4
% Hgb > 12	32%	29%	32%	38%	25%	13%	6%	11%	13%	13%	11%	14%



**Average EPO Dose per Week per Kilogram**

	Jan	Feb	Mar	Apr	May	Jun	Jul	Aug	Sep	Oct	Nov	Dec
# Average EPO	163.2	170.7	167.9	162.6	90.1	92.7	90.1	106.5	76.4	82.4	89.1	82.2

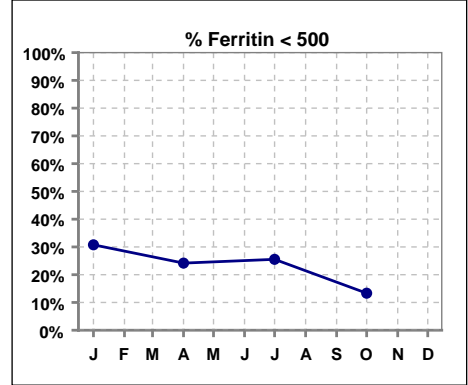


Methodology: a) All labs for 'Adequacy of Dialysis', 'Nutrition', 'Osteodystrophy', 'Anemia' and 'Diabetes' based on last value of month; b) BP's and #L processed are average of all values for month; c) Access data takes last access of month; d) Values for SGA and 'Infection Control' use most recent result.

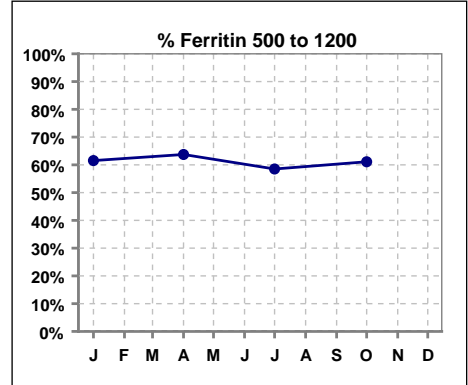
**V. ANEMIA - CONT.**

**Iron Profile**

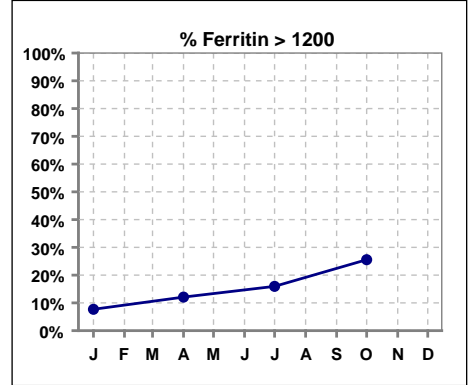
	Jan	Feb	Mar	Apr	May	Jun	Jul	Aug	Sep	Oct	Nov	Dec
# Ferritin	78			91			94			90		
# Ferritin < 500	24			22			24			12		
Pop. Mean	664			759			830			927		
Std. Deviation	378			403			433			399		
<b>% Ferritin &lt; 500</b>	<b>31%</b>			<b>24%</b>			<b>26%</b>			<b>13%</b>		



	Jan	Feb	Mar	Apr	May	Jun	Jul	Aug	Sep	Oct	Nov	Dec
# Ferritin	78			91			94			90		
# Ferritin 500 to 1200	48			58			55			55		
Pop. Mean	664			759			830			927		
Std. Deviation	378			403			433			399		
<b>% Ferritin 500 to 1200</b>	<b>62%</b>			<b>64%</b>			<b>59%</b>			<b>61%</b>		

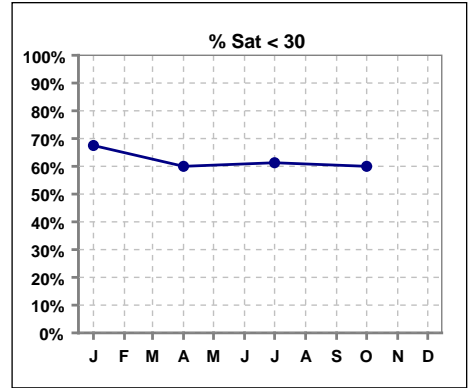


	Jan	Feb	Mar	Apr	May	Jun	Jul	Aug	Sep	Oct	Nov	Dec
# Ferritin	78			91			94			90		
# Ferritin > 1200	6			11			15			23		
Pop. Mean	664			759			830			927		
Std. Deviation	378			403			433			399		
<b>% Ferritin &gt; 1200</b>	<b>8%</b>			<b>12%</b>			<b>16%</b>			<b>26%</b>		

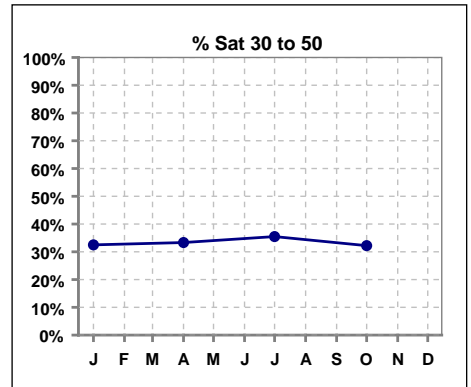


**V. ANEMIA - CONT.**

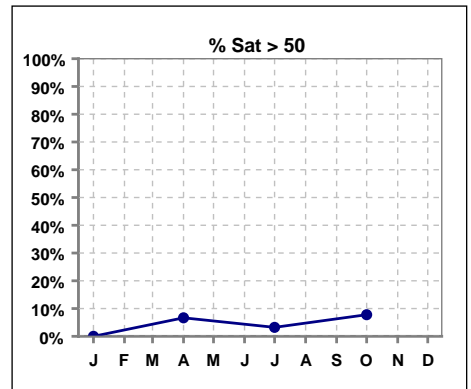
	Jan	Feb	Mar	Apr	May	Jun	Jul	Aug	Sep	Oct	Nov	Dec
# % Sat	80			90			93			90		
# % Sat < 30	54			54			57			54		
Pop. Mean	25			29			28			29		
Std. Deviation	10			16			10			14		
<b>% % Sat &lt; 30</b>	<b>68%</b>			<b>60%</b>			<b>61%</b>			<b>60%</b>		



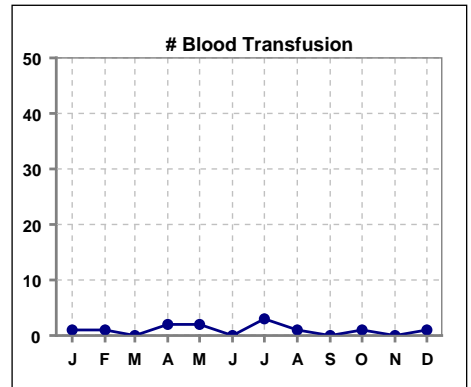
	Jan	Feb	Mar	Apr	May	Jun	Jul	Aug	Sep	Oct	Nov	Dec
# % Sat	80			90			93			90		
# % Sat 30 to 50	26			30			33			29		
Pop. Mean	25			29			28			29		
Std. Deviation	10			16			10			14		
<b>% % Sat 30 to 50</b>	<b>33%</b>			<b>33%</b>			<b>35%</b>			<b>32%</b>		



	Jan	Feb	Mar	Apr	May	Jun	Jul	Aug	Sep	Oct	Nov	Dec
# % Sat	80			90			93			90		
# % Sat > 50	0			6			3			7		
Pop. Mean	25			29			28			29		
Std. Deviation	10			16			10			14		
<b>% % Sat &gt; 50</b>	<b>0%</b>			<b>7%</b>			<b>3%</b>			<b>8%</b>		



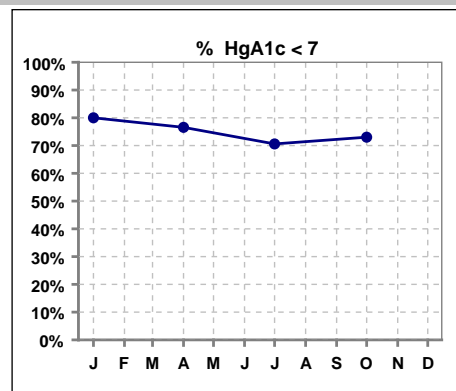
	Jan	Feb	Mar	Apr	May	Jun	Jul	Aug	Sep	Oct	Nov	Dec
<b># Blood Transfusion</b>	<b>1</b>	<b>1</b>	<b>0</b>	<b>2</b>	<b>2</b>	<b>0</b>	<b>3</b>	<b>1</b>	<b>0</b>	<b>1</b>	<b>0</b>	<b>1</b>



Methodology: a) All labs for 'Adequacy of Dialysis', 'Nutrition', 'Osteodystrophy', 'Anemia' and 'Diabetes' based on last value of month; b) BP's and #L processed are average of all values for month; c) Access data takes last access of month; d) Values for SGA and 'Infection Control' use most recent result.

**VI. Diabetes**

	Jan	Feb	Mar	Apr	May	Jun	Jul	Aug	Sep	Oct	Nov	Dec
# HgA1c	55			64			68			63		
# HgA1c < 7	44			49			48			46		
Pop. Mean	6.4			6.3			6.5			6.4		
Std. Deviation	1.39			1.33			1.60			1.37		
<b>% HgA1c &lt; 7</b>	<b>80%</b>			<b>77%</b>			<b>71%</b>			<b>73%</b>		

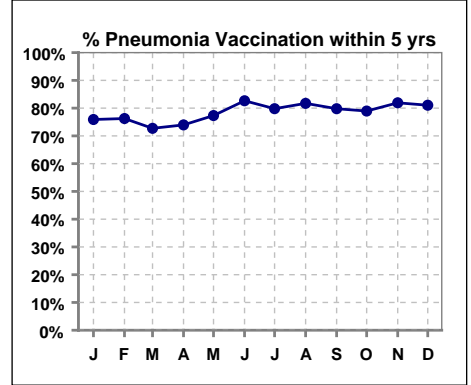




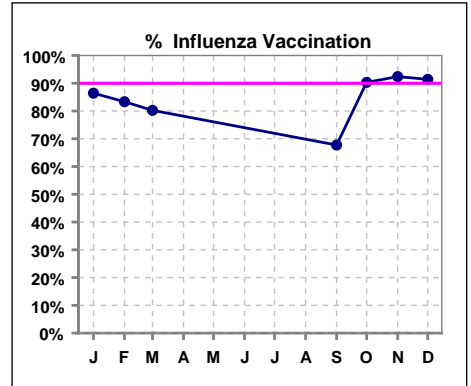
**VII. Infection Control**

**Pneumonia vaccination within the past five years**

	Jan	Feb	Mar	Apr	May	Jun	Jul	Aug	Sep	Oct	Nov	Dec
<b># Patient</b>	83	80	88	96	97	98	99	93	94	95	94	95
<b># Pneumonia</b>	63	61	64	71	75	81	79	76	75	75	77	77
<b>% Pneumonia</b>	76%	76%	73%	74%	77%	83%	80%	82%	80%	79%	82%	81%



	Jan	Feb	Mar	Apr	May	Jun	Jul	Aug	Sep	Oct	Nov	Dec
<b># Patient</b>	81	78	86						93	93	92	93
<b># Influenza</b>	70	65	69						63	84	85	85
<b>% Influenza</b>	86%	83%	80%						68%	90%	92%	91%



Methodology: a) All labs for 'Adequacy of Dialysis', 'Nutrition', 'Osteodystrophy', 'Anemia' and 'Diabetes' based on last value of month; b) BP's and #L processed are average of all values for month; c) Access data takes last access of month; d) Values for SGA and 'Infection Control' use most recent result.