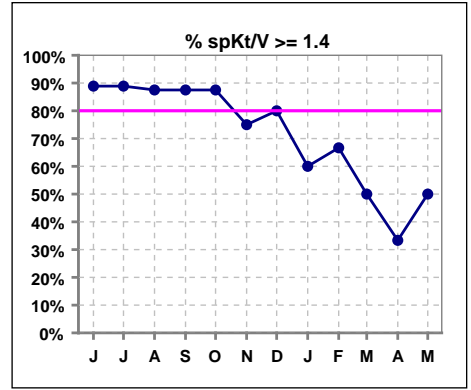
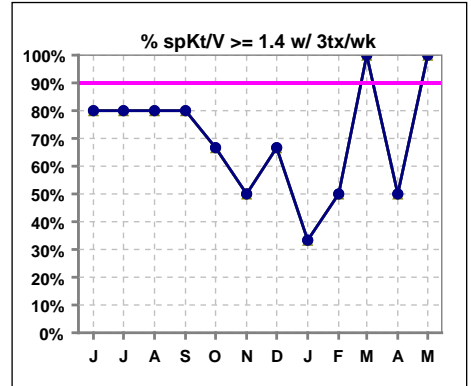


**I. ADEQUACY OF DIALYSIS**

	Jun	Jul	Aug	Sep	Oct	Nov	Dec	Jan	Feb	Mar	Apr	May
# spKt/V	9	9	8	8	8	4	5	5	6	6	6	6
# spKt/V >= 1.4	8	8	7	7	7	3	4	3	4	3	2	3
Pop. Mean	1.77	1.87	1.84	1.94	1.86	1.82	1.42	1.66	1.83	1.50	1.41	1.39
Std. Deviation	0.38	0.51	0.28	0.44	0.43	0.65	0.77	1.08	1.08	0.47	0.38	0.46
<b>% spKt/V &gt;= 1.4</b>	<b>89%</b>	<b>89%</b>	<b>88%</b>	<b>88%</b>	<b>88%</b>	<b>75%</b>	<b>80%</b>	<b>60%</b>	<b>67%</b>	<b>50%</b>	<b>33%</b>	<b>50%</b>
<b>% spKt/V &gt;= 1.2</b>	<b>100%</b>	<b>100%</b>	<b>100%</b>	<b>100%</b>	<b>100%</b>	<b>75%</b>	<b>80%</b>	<b>80%</b>	<b>83%</b>	<b>83%</b>	<b>83%</b>	<b>83%</b>



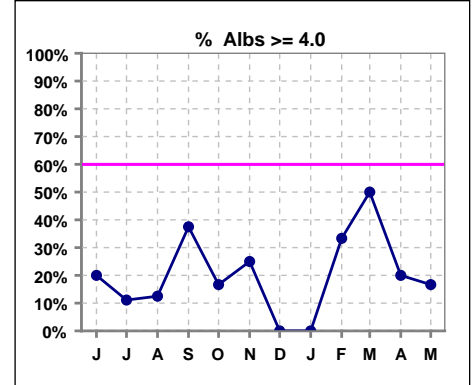
	Jun	Jul	Aug	Sep	Oct	Nov	Dec	Jan	Feb	Mar	Apr	May
# spKt/V w/3tx/wk	5	5	5	5	3	2	3	3	4	2	2	2
# spKt/V >= 1.4 w/3tx/wk	4	4	4	4	2	1	2	1	2	2	1	2
Pop. Mean	1.66	1.62	1.68	1.65	1.63	1.46	1.18	1.04	1.27	1.62	1.51	1.61
Std. Deviation	0.31	0.31	0.23	0.26	0.42	0.56	0.99	0.90	0.88	0.02	0.23	0.07
<b>% spKt/V &gt;= 1.4 w/3tx/wk</b>	<b>80%</b>	<b>80%</b>	<b>80%</b>	<b>80%</b>	<b>67%</b>	<b>50%</b>	<b>67%</b>	<b>33%</b>	<b>50%</b>	<b>100%</b>	<b>50%</b>	<b>100%</b>



\*Albumin values use BCG method - as of July 2001

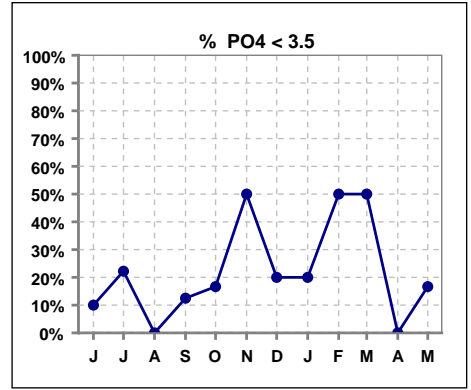
**II. NUTRITION**

	Jun	Jul	Aug	Sep	Oct	Nov	Dec	Jan	Feb	Mar	Apr	May
# Albumin	10	9	8	8	6	4	5	5	6	6	5	6
# Albumin >= 4.0	2	1	1	3	1	1	0	0	2	3	1	1
Pop. Mean	3.8	3.7	3.7	3.7	3.6	3.8	3.6	3.6	3.7	3.8	3.7	3.6
Std. Deviation	0.26	0.33	0.30	0.40	0.30	0.17	0.26	0.16	0.35	0.37	0.34	0.26
% Alb >= 3.5	100%	78%	88%	63%	67%	100%	60%	100%	67%	67%	60%	50%
% Alb >= 3.0	100%	100%	100%	100%	100%	100%	100%	100%	100%	100%	100%	100%
<b>% Alb &gt;= 4.0</b>	<b>20%</b>	<b>11%</b>	<b>13%</b>	<b>38%</b>	<b>17%</b>	<b>25%</b>	<b>0%</b>	<b>0%</b>	<b>33%</b>	<b>50%</b>	<b>20%</b>	<b>17%</b>

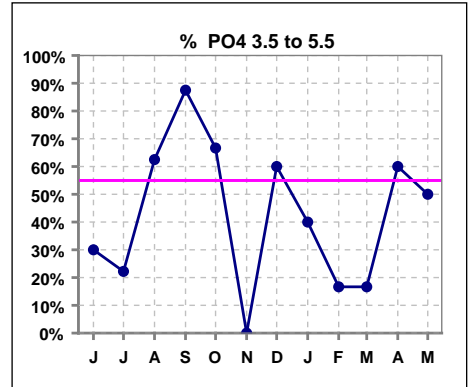


**III. OSTEODYSTROPHY**

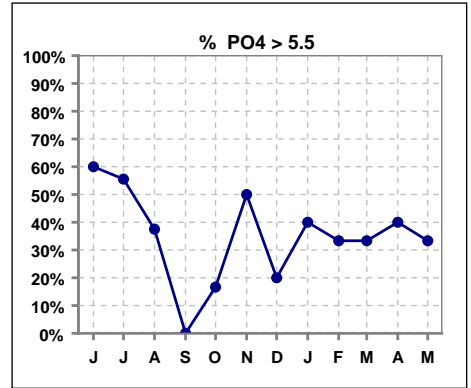
	Jun	Jul	Aug	Sep	Oct	Nov	Dec	Jan	Feb	Mar	Apr	May
# PO4	10	9	8	8	6	4	5	5	6	6	5	6
# PO4 < 3.5	1	2	0	1	1	2	1	1	3	3	0	1
Pop. Mean	5.8	5.0	5.5	4.5	4.7	4.3	4.6	4.9	4.3	4.2	5.0	4.9
Std. Deviation	1.60	1.27	1.10	0.94	1.16	2.12	1.42	1.28	1.74	2.00	1.20	1.49
% PO4 < 3.5	10%	22%	0%	13%	17%	50%	20%	20%	50%	50%	0%	17%



	Jun	Jul	Aug	Sep	Oct	Nov	Dec	Jan	Feb	Mar	Apr	May
# PO4	10	9	8	8	6	4	5	5	6	6	5	6
# PO4 3.5 to 5.5	3	2	5	7	4	0	3	2	1	1	3	3
Pop. Mean	5.8	5.0	5.5	4.5	4.7	4.3	4.6	4.9	4.3	4.2	5.0	4.9
Std. Deviation	1.60	1.27	1.10	0.94	1.16	2.12	1.42	1.28	1.74	2.00	1.20	1.49
% PO4 3.5 to 5.5	30%	22%	63%	88%	67%	0%	60%	40%	17%	17%	60%	50%



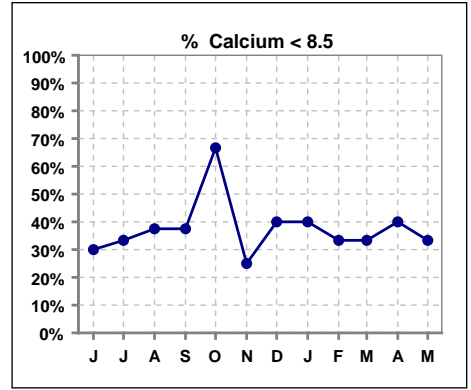
	Jun	Jul	Aug	Sep	Oct	Nov	Dec	Jan	Feb	Mar	Apr	May
# PO4	10	9	8	8	6	4	5	5	6	6	5	6
# PO4 > 5.5	6	5	3	0	1	2	1	2	2	2	2	2
Pop. Mean	5.8	5.0	5.5	4.5	4.7	4.3	4.6	4.9	4.3	4.2	5.0	4.9
Std. Deviation	1.60	1.27	1.10	0.94	1.16	2.12	1.42	1.28	1.74	2.00	1.20	1.49
% PO4 > 5.5	60%	56%	38%	0%	17%	50%	20%	40%	33%	33%	40%	33%



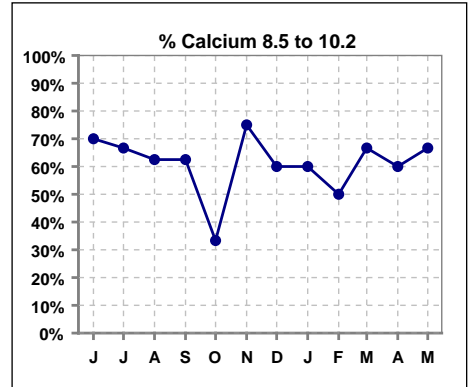
Methodology: a) All labs for 'Adequacy of Dialysis', 'Nutrition', 'Osteodystrophy' and 'Anemia' based on last value of month; b) Access data takes last access of month; c) Values for 'Infection Control' uses most recent result.

**III. OSTEODYSTROPHY - CONT.**

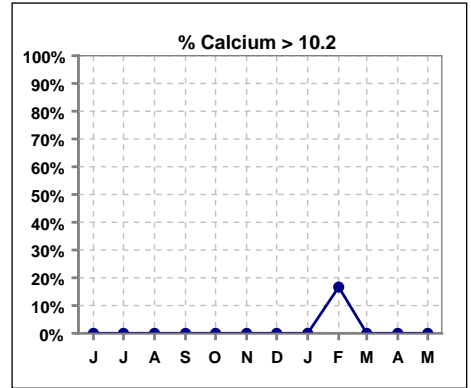
	Jun	Jul	Aug	Sep	Oct	Nov	Dec	Jan	Feb	Mar	Apr	May
# Calcium	10	9	8	8	6	4	5	5	6	6	5	6
# Calcium < 8.5	3	3	3	3	4	1	2	2	2	2	2	2
Pop. Mean	8.9	8.7	8.5	8.6	8.6	9.2	8.9	8.5	9.2	8.7	8.5	8.7
Std. Deviation	0.81	0.61	1.05	0.72	0.78	0.66	0.82	1.11	1.28	0.76	0.71	0.59
<b>% Calcium &lt; 8.5</b>	<b>30%</b>	<b>33%</b>	<b>38%</b>	<b>38%</b>	<b>67%</b>	<b>25%</b>	<b>40%</b>	<b>40%</b>	<b>33%</b>	<b>33%</b>	<b>40%</b>	<b>33%</b>



	Jun	Jul	Aug	Sep	Oct	Nov	Dec	Jan	Feb	Mar	Apr	May
# Calcium	10	9	8	8	6	4	5	5	6	6	5	6
# Calcium 8.5 to 10.2	7	6	5	5	2	3	3	3	3	4	3	4
Pop. Mean	8.9	8.7	8.5	8.6	8.6	9.2	8.9	8.5	9.2	8.7	8.5	8.7
Std. Deviation	0.81	0.61	1.05	0.72	0.78	0.66	0.82	1.11	1.28	0.76	0.71	0.59
<b>% Calcium 8.5 to 10.2</b>	<b>70%</b>	<b>67%</b>	<b>63%</b>	<b>63%</b>	<b>33%</b>	<b>75%</b>	<b>60%</b>	<b>60%</b>	<b>50%</b>	<b>67%</b>	<b>60%</b>	<b>67%</b>

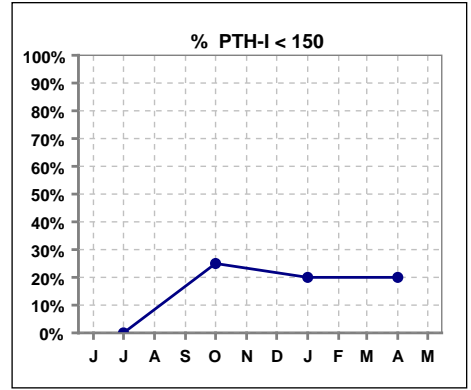


	Jun	Jul	Aug	Sep	Oct	Nov	Dec	Jan	Feb	Mar	Apr	May
# Calcium	10	9	8	8	6	4	5	5	6	6	5	6
# Calcium > 10.2	0	0	0	0	0	0	0	0	1	0	0	0
Pop. Mean	8.9	8.7	8.5	8.6	8.6	9.2	8.9	8.5	9.2	8.7	8.5	8.7
Std. Deviation	0.81	0.61	1.05	0.72	0.78	0.66	0.82	1.11	1.28	0.76	0.71	0.59
<b>% Calcium &gt; 10.2</b>	<b>0%</b>	<b>0%</b>	<b>0%</b>	<b>0%</b>	<b>0%</b>	<b>0%</b>	<b>0%</b>	<b>0%</b>	<b>17%</b>	<b>0%</b>	<b>0%</b>	<b>0%</b>

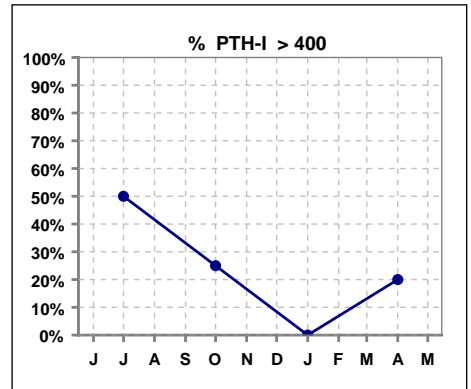


**III. OSTEODYSTROPHY - CONT.**

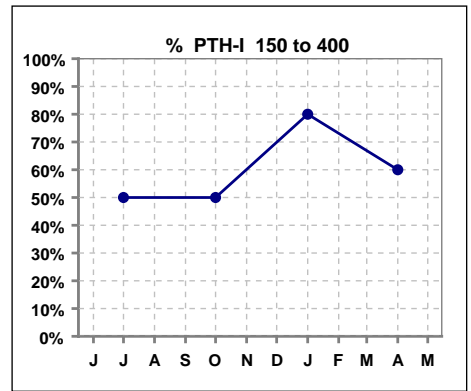
	Jun	Jul	Aug	Sep	Oct	Nov	Dec	Jan	Feb	Mar	Apr	May
# PTH-I		6			4			5			5	
# PTH-I < 150		0			1			1			1	
Pop. Mean		628			311			210			694	
Std. Deviation		503			293			51			939	
<b>% PTH-I &lt; 150</b>		0%			25%			20%			20%	



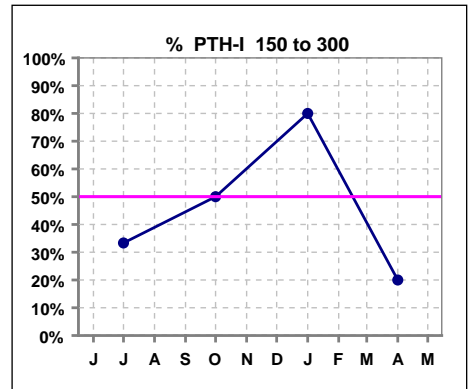
	Jun	Jul	Aug	Sep	Oct	Nov	Dec	Jan	Feb	Mar	Apr	May
# PTH-I		6			4			5			5	
# PTH-I > 400		3			1			0			1	
Pop. Mean		628			311			210			694	
Std. Deviation		503			293			51			939	
<b>% PTH-I &gt; 400</b>		50%			25%			0%			20%	



	Jun	Jul	Aug	Sep	Oct	Nov	Dec	Jan	Feb	Mar	Apr	May
# PTH-I		6			4			5			5	
# PTH-I 150 to 400		3			2			4			3	
Pop. Mean		628			311			210			694	
Std. Deviation		503			293			51			939	
<b>% PTH-I 150 to 400</b>		50%			50%			80%			60%	

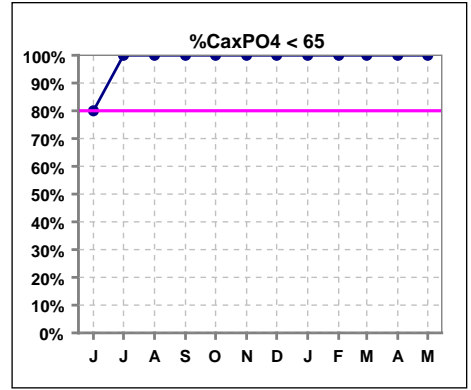


	Jun	Jul	Aug	Sep	Oct	Nov	Dec	Jan	Feb	Mar	Apr	May
# PTH-I		6			4			5			5	
# PTH-I 150 to 300		2			2			4			1	
Pop. Mean		628			311			210			694	
Std. Deviation		503			293			51			939	
<b>% PTH-I 150 to 300</b>		33%			50%			80%			20%	



**III. OSTEODYSTROPHY - CONT.**

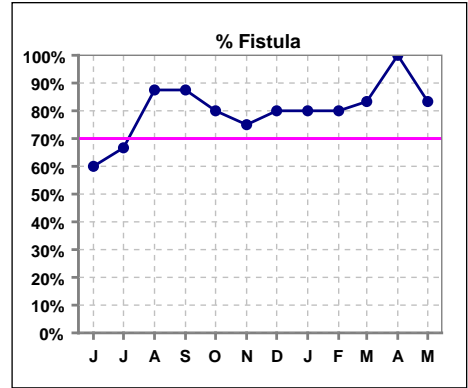
	Jun	Jul	Aug	Sep	Oct	Nov	Dec	Jan	Feb	Mar	Apr	May
# Ca x PO4	10	9	8	8	6	4	5	5	6	6	5	6
# Ca x PO4 < 65	8	9	8	8	6	4	5	5	6	6	5	6
Pop. Mean	50.0	43.5	46.3	38.4	40.5	40.2	41.0	42.2	39.4	36.6	46.2	42.8
Std. Deviation	15.5	11.4	8.7	9.6	11.4	22.1	11.8	13.4	17.6	18.2	12.0	13.7
<b>% CaxPO4 &lt; 65</b>	<b>80%</b>	<b>100%</b>	<b>100%</b>	<b>100%</b>	<b>100%</b>	<b>100%</b>	<b>100%</b>	<b>100%</b>	<b>100%</b>	<b>100%</b>	<b>100%</b>	<b>100%</b>
<b>% CaxPO4 &lt; 55</b>	<b>70%</b>	<b>89%</b>	<b>88%</b>	<b>100%</b>	<b>100%</b>	<b>50%</b>	<b>100%</b>	<b>60%</b>	<b>67%</b>	<b>67%</b>	<b>80%</b>	<b>67%</b>



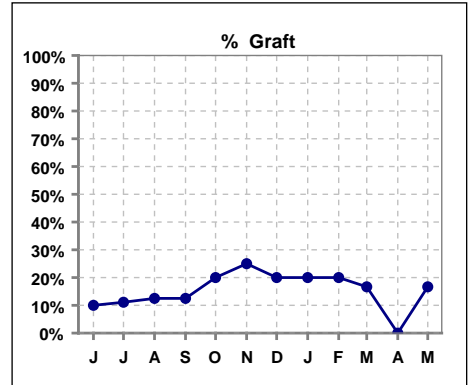
**Northwest Kidney Centers - Home Hemodialysis - Standard**  
**Quality Assurance Reports**  
 Through period ending May. 31, 2011

**IV. ACCESS**

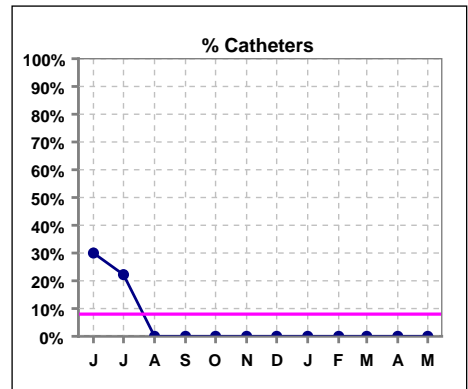
	Jun	Jul	Aug	Sep	Oct	Nov	Dec	Jan	Feb	Mar	Apr	May
# Access	10	9	8	8	5	4	5	5	5	6	4	6
# Fistula	6	6	7	7	4	3	4	4	4	5	4	5
% Fistula	60%	67%	88%	88%	80%	75%	80%	80%	80%	83%	100%	83%



	Jun	Jul	Aug	Sep	Oct	Nov	Dec	Jan	Feb	Mar	Apr	May
# Access	10	9	8	8	5	4	5	5	5	6	4	6
# Graft	1	1	1	1	1	1	1	1	1	1	0	1
% Graft	10%	11%	13%	13%	20%	25%	20%	20%	20%	17%	0%	17%



	Jun	Jul	Aug	Sep	Oct	Nov	Dec	Jan	Feb	Mar	Apr	May
# Access	10	9	8	8	5	4	5	5	5	6	4	6
# Catheters	3	2	0	0	0	0	0	0	0	0	0	0
% Catheters	30%	22%	0%	0%	0%	0%	0%	0%	0%	0%	0%	0%

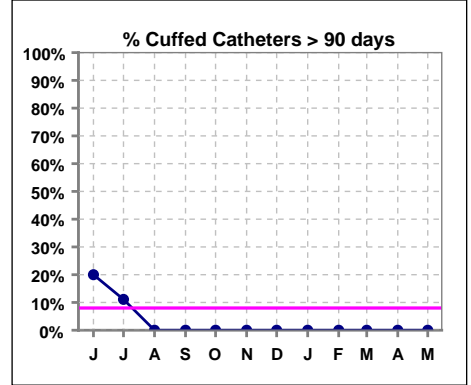


Methodology: a) All labs for 'Adequacy of Dialysis', 'Nutrition', 'Osteodystrophy' and 'Anemia' based on last value of month; b) Access data takes last access of month; c) Values for 'Infection Control' uses most recent result.

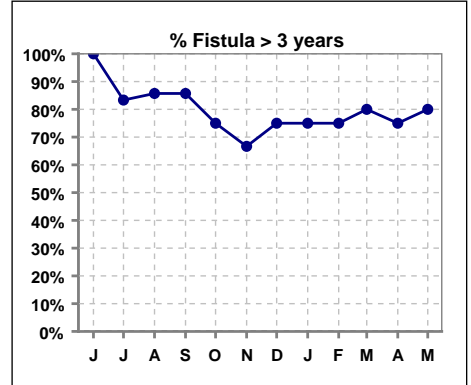
**IV. ACCESS - CONT.**

**Cuffed Catheters > 90 days**

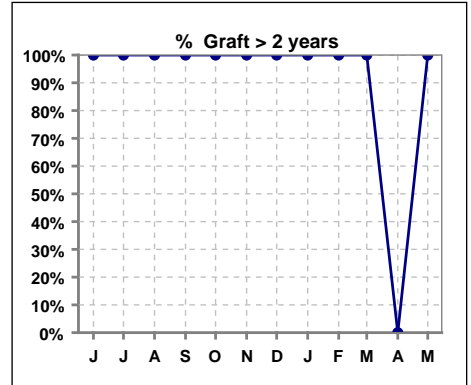
	Jun	Jul	Aug	Sep	Oct	Nov	Dec	Jan	Feb	Mar	Apr	May
<b># Access</b>	10	9	8	8	5	4	5	5	5	6	4	6
<b># Cuffed Catheters</b>	2	1	0	0	0	0	0	0	0	0	0	0
<b>% Cuffed Catheters</b>	20%	11%	0%	0%	0%	0%	0%	0%	0%	0%	0%	0%



	Jun	Jul	Aug	Sep	Oct	Nov	Dec	Jan	Feb	Mar	Apr	May
<b># Fistula</b>	6	6	7	7	4	3	4	4	4	5	4	5
<b># Fistula &gt; 3 yrs</b>	6	5	6	6	3	2	3	3	3	4	3	4
<b>% Fistula &gt; 3 yrs</b>	100%	83%	86%	86%	75%	67%	75%	75%	75%	80%	75%	80%



	Jun	Jul	Aug	Sep	Oct	Nov	Dec	Jan	Feb	Mar	Apr	May
<b># Graft</b>	1	1	1	1	1	1	1	1	1	1	0	1
<b># Graft &gt; 2 yrs</b>	1	1	1	1	1	1	1	1	1	1	0	1
<b>% Graft &gt; 2 yrs</b>	100%	100%	100%	100%	100%	100%	100%	100%	100%	100%	0%	100%



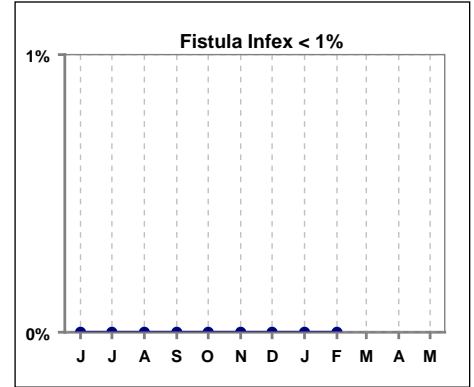
Methodology: a) All labs for 'Adequacy of Dialysis', 'Nutrition', 'Osteodystrophy' and 'Anemia' based on last value of month; b) Access data takes last access of month; c) Values for 'Infection Control' uses most recent result.



**IV. ACCESS - CONT.**

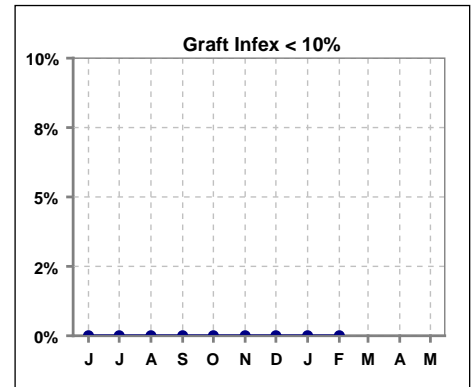
**Infection per use-life of access fistula**

	Jun	Jul	Aug	Sep	Oct	Nov	Dec	Jan	Feb	Mar	Apr	May
<b>Infex per use-life</b>	0	0	0	0	0	0	0	0	0	0	0	0



**Infection per use-life of access graft**

	Jun	Jul	Aug	Sep	Oct	Nov	Dec	Jan	Feb	Mar	Apr	May
<b>Infex per use-life</b>	0	0	0	0	0	0	0	0	0	0	0	0



**Thrombosis Episode - access fistula**

	Jun	Jul	Aug	Sep	Oct	Nov	Dec	Jan	Feb	Mar	Apr	May
<b>Current Month</b>	0	0	0	0	0	0	0	0	0	0	0	0
<b>Rolling Year-to-date</b>	0	0	0	0	0	0	0	0	0	0	0	0

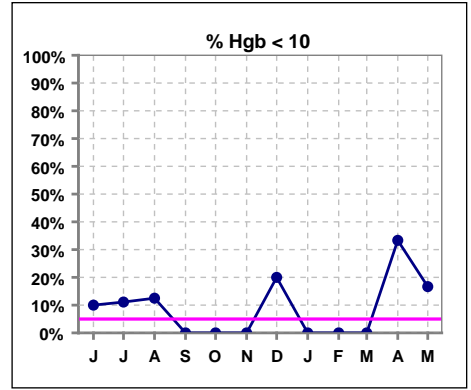
**Thrombosis Episode - access graft**

	Jun	Jul	Aug	Sep	Oct	Nov	Dec	Jan	Feb	Mar	Apr	May
<b>Current Month</b>	0	0	0	0	0	0	0	0	0	0	0	0
<b>Rolling Year-to-date</b>	0.56	1.07	0	0	0	0	0	0	0	0	0	0

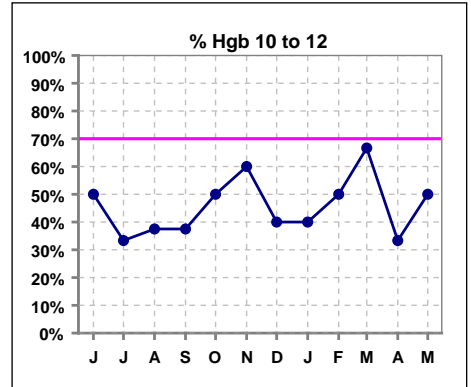
**Northwest Kidney Centers - Home Hemodialysis - Standard**  
 Quality Assurance Reports  
 Through period ending May. 31, 2011

**V. ANEMIA**

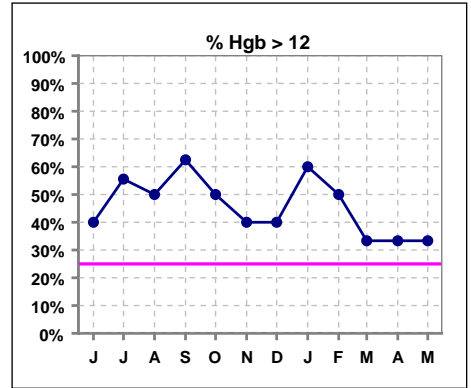
	Jun	Jul	Aug	Sep	Oct	Nov	Dec	Jan	Feb	Mar	Apr	May
# Hgb	10	9	8	8	6	5	5	5	6	6	6	6
# Hgb < 10	1	1	1	0	0	0	1	0	0	0	2	1
Pop. Mean	11.5	11.8	12.2	12.2	12.2	12.0	11.7	11.9	12.1	11.6	11.0	11.3
Std. Deviation	1.6	2.3	1.3	1.4	1.2	1.4	1.5	1.2	0.8	1.1	1.9	1.4
% Hgb < 10	10%	11%	13%	0%	0%	0%	20%	0%	0%	0%	33%	17%



	Jun	Jul	Aug	Sep	Oct	Nov	Dec	Jan	Feb	Mar	Apr	May
# Hgb	10	9	8	8	6	5	5	5	6	6	6	6
# Hgb 10 to 12	5	3	3	3	3	3	2	2	3	4	2	3
Pop. Mean	11.5	11.8	12.2	12.2	12.2	12.0	11.7	11.9	12.1	11.6	11.0	11.3
Std. Deviation	1.6	2.3	1.3	1.4	1.2	1.4	1.5	1.2	0.8	1.1	1.9	1.4
% Hgb 10 to 12	50%	33%	38%	38%	50%	60%	40%	40%	50%	67%	33%	50%



	Jun	Jul	Aug	Sep	Oct	Nov	Dec	Jan	Feb	Mar	Apr	May
# Hgb	10	9	8	8	6	5	5	5	6	6	6	6
# Hgb > 12	4	5	4	5	3	2	2	3	3	2	2	2
Pop. Mean	11.5	11.8	12.2	12.2	12.2	12.0	11.7	11.9	12.1	11.6	11.0	11.3
Std. Deviation	1.6	2.3	1.3	1.4	1.2	1.4	1.5	1.2	0.8	1.1	1.9	1.4
% Hgb > 12	40%	56%	50%	63%	50%	40%	40%	60%	50%	33%	33%	33%

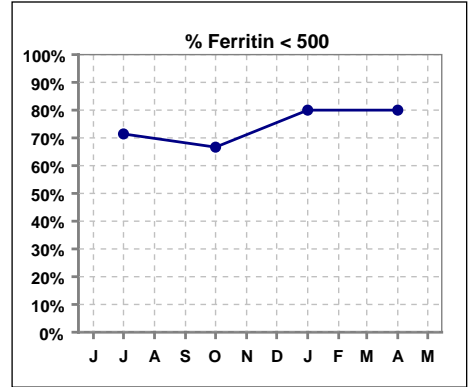


Methodology: a) All labs for 'Adequacy of Dialysis', 'Nutrition', 'Osteodystrophy' and 'Anemia' based on last value of month; b) Access data takes last access of month; c) Values for 'Infection Control' uses most recent result.

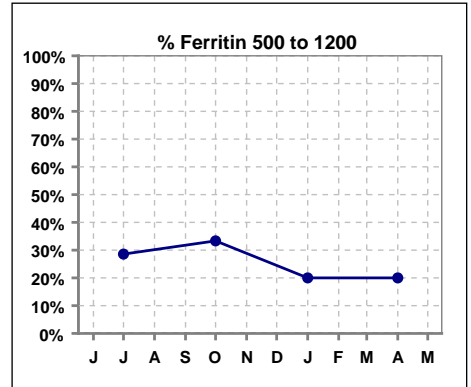
**V. ANEMIA - CONT.**

**Iron Profile**

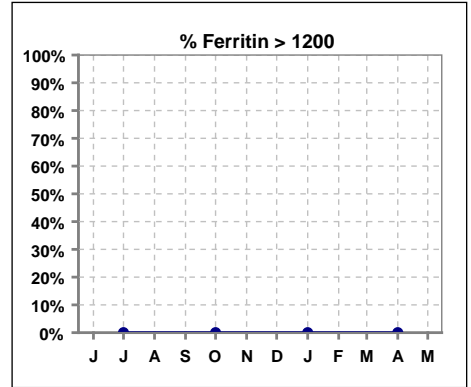
	Jun	Jul	Aug	Sep	Oct	Nov	Dec	Jan	Feb	Mar	Apr	May
# Ferritin		7			6			5			5	
# Ferritin < 500		5			4			4			4	
Pop. Mean		390			364			284			268	
Std. Deviation		241			254			241			302	
<b>% Ferritin &lt; 500</b>		<b>71%</b>			<b>67%</b>			<b>80%</b>			<b>80%</b>	



	Jun	Jul	Aug	Sep	Oct	Nov	Dec	Jan	Feb	Mar	Apr	May
# Ferritin		7			6			5			5	
# Ferritin 500 to 1200		2			2			1			1	
Pop. Mean		390			364			284			268	
Std. Deviation		241			254			241			302	
<b>% Ferritin 500 to 1200</b>		<b>29%</b>			<b>33%</b>			<b>20%</b>			<b>20%</b>	

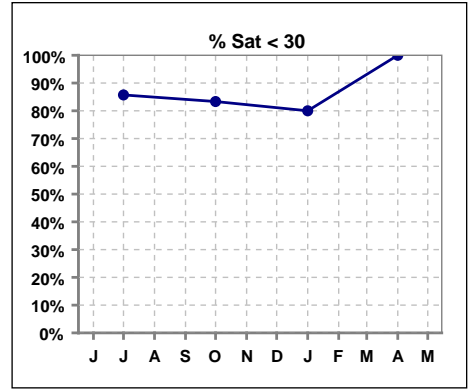


	Jun	Jul	Aug	Sep	Oct	Nov	Dec	Jan	Feb	Mar	Apr	May
# Ferritin		7			6			5			5	
# Ferritin > 1200		0			0			0			0	
Pop. Mean		390			364			284			268	
Std. Deviation		241			254			241			302	
<b>% Ferritin &gt; 1200</b>		<b>0%</b>			<b>0%</b>			<b>0%</b>			<b>0%</b>	

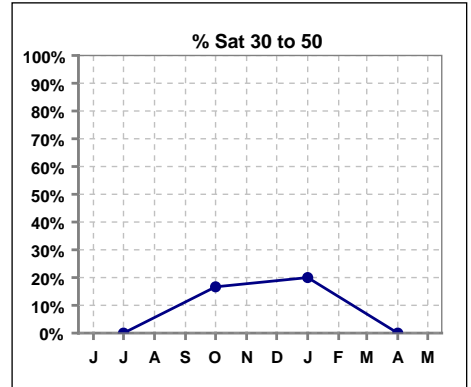


**V. ANEMIA - CONT.**

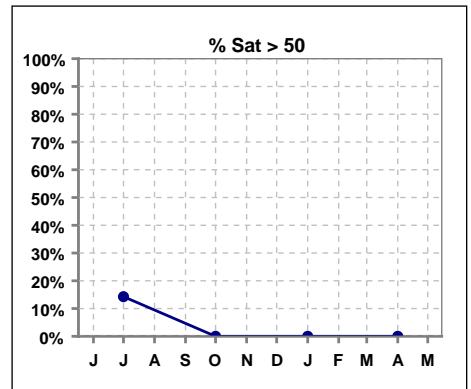
	Jun	Jul	Aug	Sep	Oct	Nov	Dec	Jan	Feb	Mar	Apr	May
# % Sat		7			6			5			5	
# % Sat < 30		6			5			4			5	
Pop. Mean		22			21			21			17	
Std. Deviation		14			11			10			6	
<b>% % Sat &lt; 30</b>		<b>86%</b>			<b>83%</b>			<b>80%</b>			<b>100%</b>	



	Jun	Jul	Aug	Sep	Oct	Nov	Dec	Jan	Feb	Mar	Apr	May
# % Sat		7			6			5			5	
# % Sat 30 to 50		0			1			1			0	
Pop. Mean		22			21			21			17	
Std. Deviation		14			11			10			6	
<b>% Sat% 30 to 50</b>		<b>0%</b>			<b>17%</b>			<b>20%</b>			<b>0%</b>	



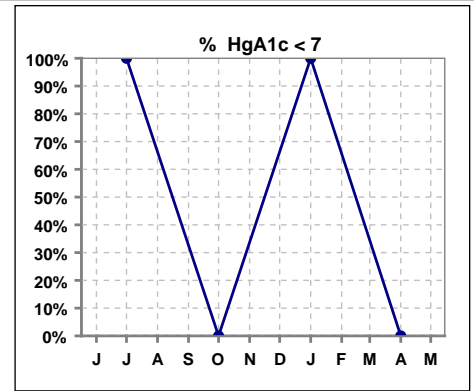
	Jun	Jul	Aug	Sep	Oct	Nov	Dec	Jan	Feb	Mar	Apr	May
# % Sat		7			6			5			5	
# % Sat > 50		1			0			0			0	
Pop. Mean		22			21			21			17	
Std. Deviation		14			11			10			6	
<b>% %Sat &gt; 50</b>		<b>14%</b>			<b>0%</b>			<b>0%</b>			<b>0%</b>	



Methodology: a) All labs for 'Adequacy of Dialysis', 'Nutrition', 'Osteodystrophy' and 'Anemia' based on last value of month; b) Access data takes last access of month; c) Values for 'Infection Control' uses most recent result.

**VI. Diabetes**

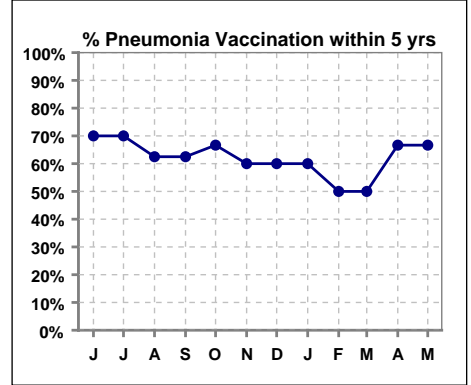
	Jun	Jul	Aug	Sep	Oct	Nov	Dec	Jan	Feb	Mar	Apr	May
# HgA1c		2			0			1			0	
# HgA1c < 7		2			0			1			0	
Pop. Mean		6.1			0			6.8			0	
Std. Deviation		0.85			0			0			0	
<b>% HgA1c &lt; 7</b>		<b>100%</b>			<b>0%</b>			<b>100%</b>			<b>0%</b>	



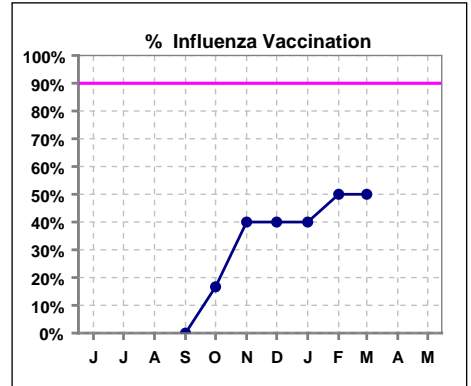
**VII. Infection Control**

**Pneumonia vaccination within the past five years**

	Jun	Jul	Aug	Sep	Oct	Nov	Dec	Jan	Feb	Mar	Apr	May
# Patient	10	10	8	8	6	5	5	5	6	6	6	6
# Pneumonia	7	7	5	5	4	3	3	3	3	3	4	4
<b>% Pneumonia</b>	<b>70%</b>	<b>70%</b>	<b>63%</b>	<b>63%</b>	<b>67%</b>	<b>60%</b>	<b>60%</b>	<b>60%</b>	<b>50%</b>	<b>50%</b>	<b>67%</b>	<b>67%</b>



	Jun	Jul	Aug	Sep	Oct	Nov	Dec	Jan	Feb	Mar	Apr	May
# Patient				8	6	5	5	5	6	6		
# Influenza				0	1	2	2	2	3	3		
<b>% Influenza</b>				<b>0%</b>	<b>17%</b>	<b>40%</b>	<b>40%</b>	<b>40%</b>	<b>50%</b>	<b>50%</b>		



Methodology: a) All labs for 'Adequacy of Dialysis', 'Nutrition', 'Osteodystrophy' and 'Anemia' based on last value of month; b) Access data takes last access of month; c) Values for 'Infection Control' uses most recent result.