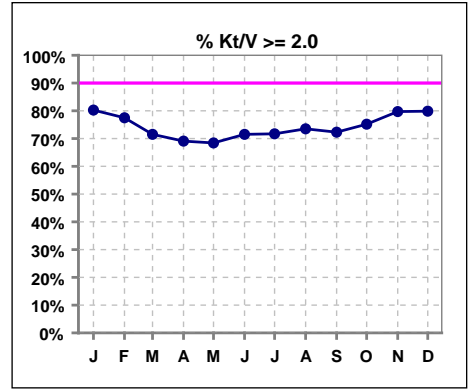
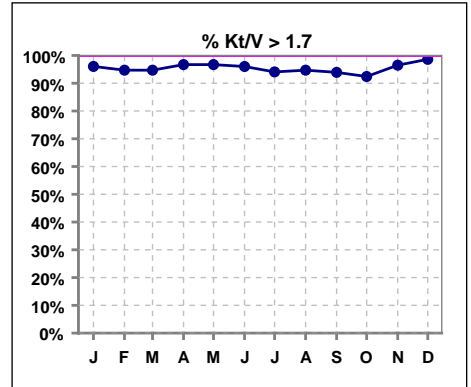


**I. ADEQUACY OF DIALYSIS**

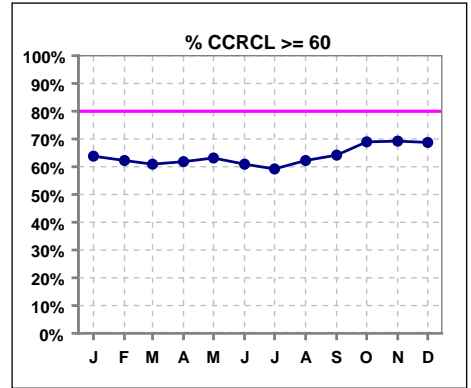
	Jan	Feb	Mar	Apr	May	Jun	Jul	Aug	Sep	Oct	Nov	Dec
# Kt/V - CA/CC PD	152	151	151	152	152	151	152	151	148	145	143	144
# Kt/V >= 2.0	122	117	108	105	104	108	109	111	107	109	114	115
Pop. Mean	2.40	2.36	2.34	2.35	2.37	2.36	2.37	2.36	2.40	2.40	2.43	2.45
Std. Deviation	0.60	0.60	0.58	0.59	0.67	0.62	0.65	0.62	0.64	0.61	0.59	0.59
% Kt/V >= 2.0	80%	77%	72%	69%	68%	72%	72%	74%	72%	75%	80%	80%



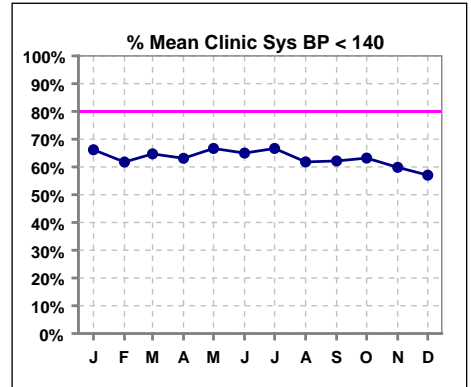
	Jan	Feb	Mar	Apr	May	Jun	Jul	Aug	Sep	Oct	Nov	Dec
# Kt/V - CA/CC PD	152	151	151	152	152	151	152	151	148	145	143	144
# Kt/V >= 1.7	146	143	143	147	147	145	143	143	139	134	138	142
Pop. Mean	2.40	2.36	2.34	2.35	2.37	2.36	2.37	2.36	2.40	2.40	2.43	2.45
Std. Deviation	0.60	0.60	0.58	0.59	0.67	0.62	0.65	0.62	0.64	0.61	0.59	0.59
% Kt/V >= 1.7	96%	95%	95%	97%	97%	96%	94%	95%	94%	92%	97%	99%



	Jan	Feb	Mar	Apr	May	Jun	Jul	Aug	Sep	Oct	Nov	Dec
# CRCL CA/CC PD	152	151	151	152	152	151	152	151	148	145	143	144
# CCRCL >= 60	97	94	92	94	96	92	90	94	95	100	99	99
Pop. Mean	84.03	82.98	82.57	82.89	83.50	81.96	82.88	81.50	84.68	84.59	85.69	86.95
Std. Deviation	43.46	43.49	42.78	42.80	44.90	38.05	40.08	37.62	40.52	39.35	39.61	40.95
% CCRCL >= 60	64%	62%	61%	62%	63%	61%	59%	62%	64%	69%	69%	69%



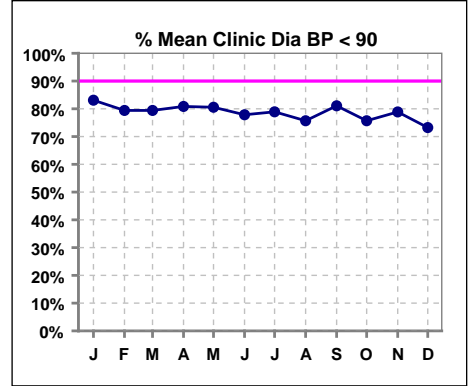
	Jan	Feb	Mar	Apr	May	Jun	Jul	Aug	Sep	Oct	Nov	Dec
# Mean Clinic Sys BP	142	136	136	141	144	140	147	144	148	144	142	142
# Sys BP < 140	94	84	88	89	96	91	98	89	92	91	85	81
Pop. Mean	131	131	132	134	131	143	134	132	134	133	134	135
Std. Deviation	26.0	28.6	25.5	27.0	23.7	120.8	25.0	24.6	25.4	24.8	25.7	24.9
% Sys BP <140	66%	62%	65%	63%	67%	65%	67%	62%	62%	63%	60%	57%



Methodology: a) Kt/V, CRCL and nPNa values are 4 month rolling mean of last value for each month, all other report lab results are based on last value of month; b) BP's are average of all values for month.

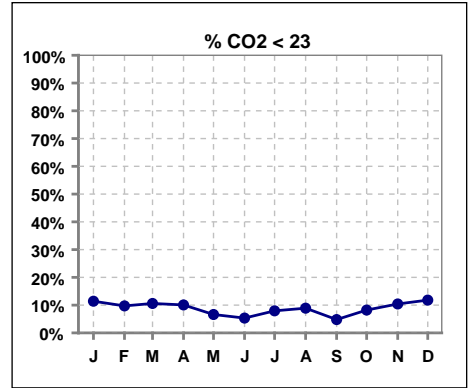
**I. ADEQUACY OF DIALYSIS - CONT.**

	Jan	Feb	Mar	Apr	May	Jun	Jul	Aug	Sep	Oct	Nov	Dec
# Mean Clinic Dia BP	142	136	136	141	144	140	147	144	148	144	142	142
# Dia BP < 90	118	108	108	114	116	109	116	109	120	109	112	104
Pop. Mean	76	78	77	78	78	76	78	80	128	79	79	79
Std. Deviation	13.9	15.1	14.5	14.8	14.2	14.8	16.4	16.1	602.7	15.4	15.3	15.9
% Dia BP < 90	83%	79%	79%	81%	81%	78%	79%	76%	81%	76%	79%	73%

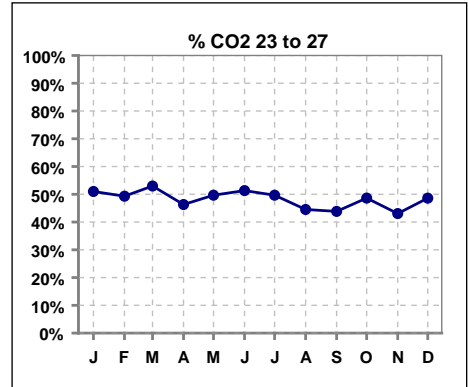


**I. ADEQUACY OF DIALYSIS - CONT.**

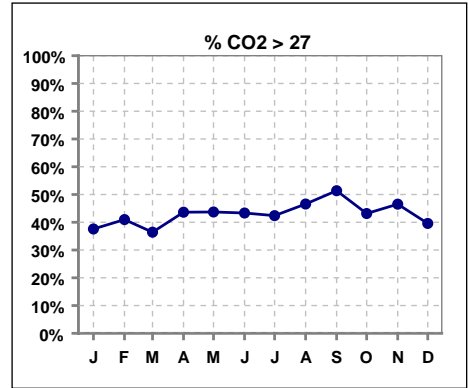
	Jan	Feb	Mar	Apr	May	Jun	Jul	Aug	Sep	Oct	Nov	Dec
# CO2	149	144	151	149	151	150	151	146	146	146	144	144
# CO2 < 23	17	14	16	15	10	8	12	13	7	12	15	17
Pop. Mean	26	27	26	27	27	27	27	27	27	27	27	26
Std. Deviation	3.34	3.27	3.15	3.09	3.10	2.77	2.98	3.14	2.98	2.82	3.49	3.21
% CO2 < 23	11%	10%	11%	10%	7%	5%	8%	9%	5%	8%	10%	12%



	Jan	Feb	Mar	Apr	May	Jun	Jul	Aug	Sep	Oct	Nov	Dec
# CO2	149	144	151	149	151	150	151	146	146	146	144	144
# CO2 23 to 27	76	71	80	69	75	77	75	65	64	71	62	70
Pop. Mean	26	27	26	27	27	27	27	27	27	27	27	26
Std. Deviation	3.34	3.27	3.15	3.09	3.10	2.77	2.98	3.14	2.98	2.82	3.49	3.21
% CO2 23 to 27	51%	49%	53%	46%	50%	51%	50%	45%	44%	49%	43%	49%



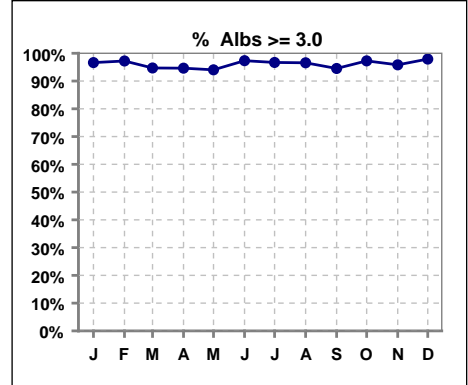
	Jan	Feb	Mar	Apr	May	Jun	Jul	Aug	Sep	Oct	Nov	Dec
# CO2	149	144	151	149	151	150	151	146	146	146	144	144
# CO2 > 27	56	59	55	65	66	65	64	68	75	63	67	57
Pop. Mean	26	27	26	27	27	27	27	27	27	27	27	26
Std. Deviation	3.34	3.27	3.15	3.09	3.10	2.77	2.98	3.14	2.98	2.82	3.49	3.21
% CO2 > 27	38%	41%	36%	44%	44%	43%	42%	47%	51%	43%	47%	40%



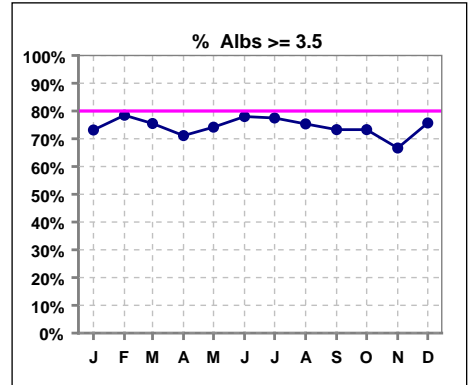
\*Albumin values use BCG method - as of July 2001

**II. NUTRITION**

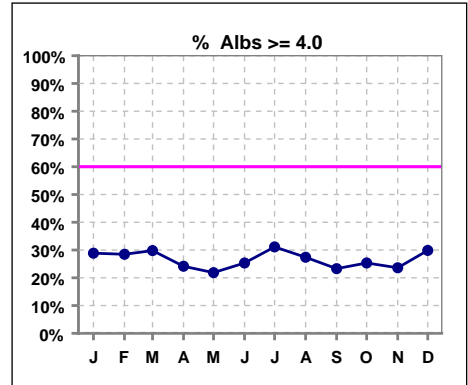
	Jan	Feb	Mar	Apr	May	Jun	Jul	Aug	Sep	Oct	Nov	Dec
# Albumin	149	144	151	149	151	150	151	146	146	146	144	144
# Albumin >= 3.0	144	140	143	141	142	146	146	141	138	142	138	141
Pop. Mean	3.7	3.7	3.7	3.7	3.6	3.7	3.7	3.7	3.7	3.7	3.7	3.7
Std. Deviation	0.42	0.42	0.42	0.40	0.42	0.40	0.45	0.45	0.42	0.40	0.45	0.39
% Alb >= 3.0	97%	97%	95%	95%	94%	97%	97%	97%	95%	97%	96%	98%



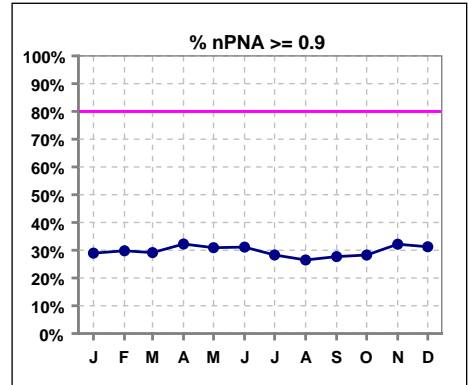
	Jan	Feb	Mar	Apr	May	Jun	Jul	Aug	Sep	Oct	Nov	Dec
# Albumin	149	144	151	149	151	150	151	146	146	146	144	144
# Albumin >= 3.5	109	113	114	106	112	117	117	110	107	107	96	109
Pop. Mean	3.7	3.7	3.7	3.7	3.6	3.7	3.7	3.7	3.7	3.7	3.7	3.7
Std. Deviation	0.42	0.42	0.42	0.40	0.42	0.40	0.45	0.45	0.42	0.40	0.45	0.39
% Alb >= 3.5	73%	78%	75%	71%	74%	78%	77%	75%	73%	73%	67%	76%



	Jan	Feb	Mar	Apr	May	Jun	Jul	Aug	Sep	Oct	Nov	Dec
# Albumin	149	144	151	149	151	150	151	146	146	146	144	144
# Albumin >= 4.0	43	41	45	36	33	38	47	40	34	37	34	43
Pop. Mean	3.7	3.7	3.7	3.7	3.6	3.7	3.7	3.7	3.7	3.7	3.7	3.7
Std. Deviation	0.42	0.42	0.42	0.40	0.42	0.40	0.45	0.45	0.42	0.40	0.45	0.39
% Alb >= 4.0	29%	28%	30%	24%	22%	25%	31%	27%	23%	25%	24%	30%



	Jan	Feb	Mar	Apr	May	Jun	Jul	Aug	Sep	Oct	Nov	Dec
# nPNA	152	151	151	152	152	151	152	151	148	145	143	144
# nPNA >= 0.9	44	45	44	49	47	47	43	40	41	41	46	45
Pop. Mean	0.8	0.8	0.8	0.8	0.8	0.8	0.8	0.8	0.8	0.8	0.8	0.8
Std. Deviation	0.24	0.24	0.24	0.24	0.26	0.33	0.24	0.24	0.25	0.24	0.26	0.26
% nPNA >= 0.9	29%	30%	29%	32%	31%	31%	28%	26%	28%	28%	32%	31%

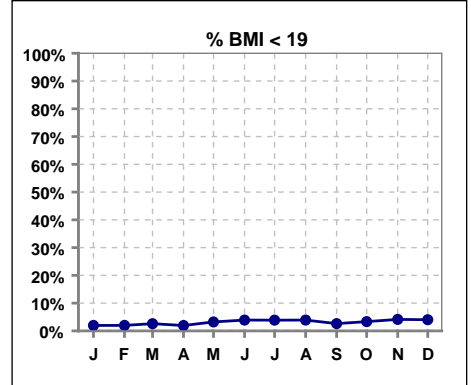


Methodology: a) KtV, CRCL and nPna values are 4 month rolling mean of last value for each month, all other report lab results are based on last value of month; b) BP's are average of all values for month.

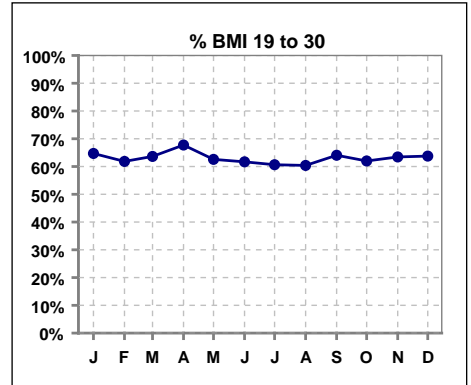
\*Albumin values use BCG method - as of July 2001

**II. NUTRITION - CONT.**

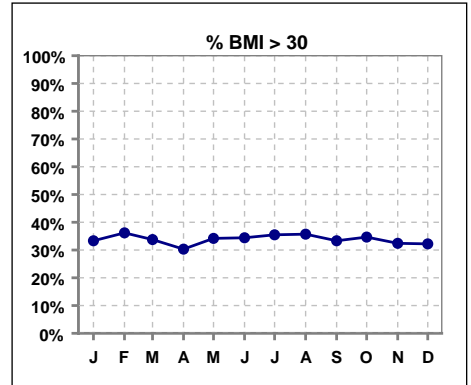
	Jan	Feb	Mar	Apr	May	Jun	Jul	Aug	Sep	Oct	Nov	Dec
# BMI	153	152	154	155	155	154	155	154	153	150	145	149
# BMI < 19	3	3	4	3	5	6	6	6	4	5	6	6
Pop. Mean	29	30	30	29	29	29	29	44	29	42	29	29
Std. Deviation	6.7	7.9	14.6	6.8	7.0	10.4	10.4	180.7	7.3	158.3	6.4	6.6
<b>% BMI &lt; 19</b>	<b>2%</b>	<b>2%</b>	<b>3%</b>	<b>2%</b>	<b>3%</b>	<b>4%</b>	<b>4%</b>	<b>4%</b>	<b>3%</b>	<b>3%</b>	<b>4%</b>	<b>4%</b>



	Jan	Feb	Mar	Apr	May	Jun	Jul	Aug	Sep	Oct	Nov	Dec
# BMI	153	152	154	155	155	154	155	154	153	150	145	149
# BMI 19 to 30	99	94	98	105	97	95	94	93	98	93	92	95
Pop. Mean	29	30	30	29	29	29	29	44	29	42	29	29
Std. Deviation	6.7	7.9	14.6	6.8	7.0	10.4	10.4	180.7	7.3	158.3	6.4	6.6
<b>% BMI 19 to 30</b>	<b>65%</b>	<b>62%</b>	<b>64%</b>	<b>68%</b>	<b>63%</b>	<b>62%</b>	<b>61%</b>	<b>60%</b>	<b>64%</b>	<b>62%</b>	<b>63%</b>	<b>64%</b>

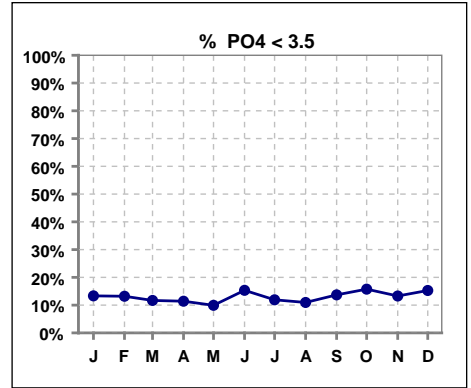


	Jan	Feb	Mar	Apr	May	Jun	Jul	Aug	Sep	Oct	Nov	Dec
# BMI	153	152	154	155	155	154	155	154	153	150	145	149
# BMI > 30	51	55	52	47	53	53	55	55	51	52	47	48
Pop. Mean	29	30	30	29	29	29	29	44	29	42	29	29
Std. Deviation	6.7	7.9	14.6	6.8	7.0	10.4	10.4	180.7	7.3	158.3	6.4	6.6
<b>% BMI &gt; 30</b>	<b>33%</b>	<b>36%</b>	<b>34%</b>	<b>30%</b>	<b>34%</b>	<b>34%</b>	<b>35%</b>	<b>36%</b>	<b>33%</b>	<b>35%</b>	<b>32%</b>	<b>32%</b>

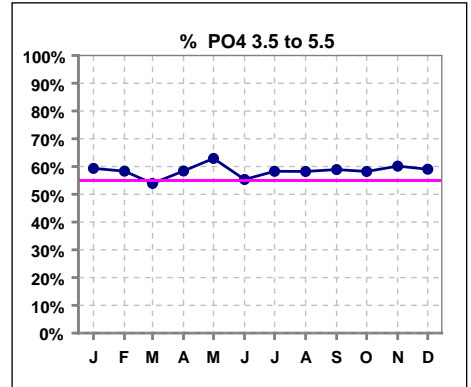


**III. OSTEODYSTROPHY**

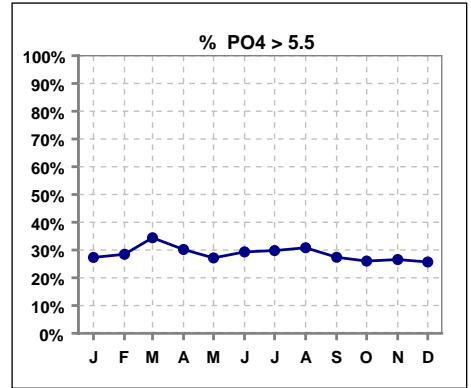
	Jan	Feb	Mar	Apr	May	Jun	Jul	Aug	Sep	Oct	Nov	Dec
# PO4	150	144	154	149	151	150	151	146	146	146	143	144
# PO4 < 3.5	20	19	18	17	15	23	18	16	20	23	19	22
Pop. Mean	4.9	5.0	5.1	5.0	4.9	5.1	5.0	5.0	4.9	4.8	4.9	4.9
Std. Deviation	1.58	1.56	1.61	1.47	1.43	1.61	1.56	1.36	1.58	1.48	1.62	1.60
% PO4 < 3.5	13%	13%	12%	11%	10%	15%	12%	11%	14%	16%	13%	15%



	Jan	Feb	Mar	Apr	May	Jun	Jul	Aug	Sep	Oct	Nov	Dec
# PO4	150	144	154	149	151	150	151	146	146	146	143	144
# PO4 3.5 to 5.5	89	84	83	87	95	83	88	85	86	85	86	85
Pop. Mean	4.9	5.0	5.1	5.0	4.9	5.1	5.0	5.0	4.9	4.8	4.9	4.9
Std. Deviation	1.58	1.56	1.61	1.47	1.43	1.61	1.56	1.36	1.58	1.48	1.62	1.60
% PO4 3.5 to 5.5	59%	58%	54%	58%	63%	55%	58%	58%	59%	58%	60%	59%

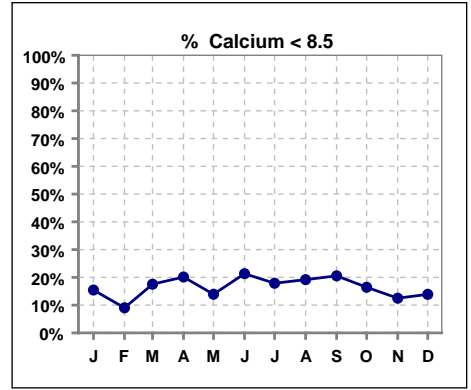


	Jan	Feb	Mar	Apr	May	Jun	Jul	Aug	Sep	Oct	Nov	Dec
# PO4	150	144	154	149	151	150	151	146	146	146	143	144
# PO4 > 5.5	41	41	53	45	41	44	45	45	40	38	38	37
Pop. Mean	4.9	5.0	5.1	5.0	4.9	5.1	5.0	5.0	4.9	4.8	4.9	4.9
Std. Deviation	1.58	1.56	1.61	1.47	1.43	1.61	1.56	1.36	1.58	1.48	1.62	1.60
% PO4 > 5.5	27%	28%	34%	30%	27%	29%	30%	31%	27%	26%	27%	26%

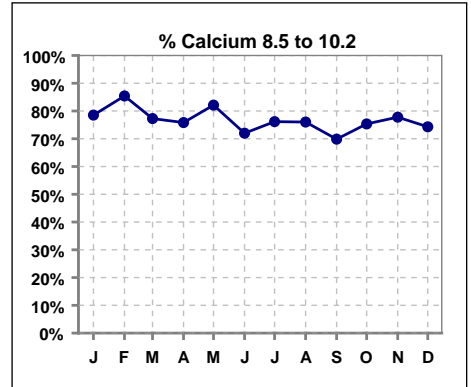


**III. OSTEODYSTROPHY - CONT.**

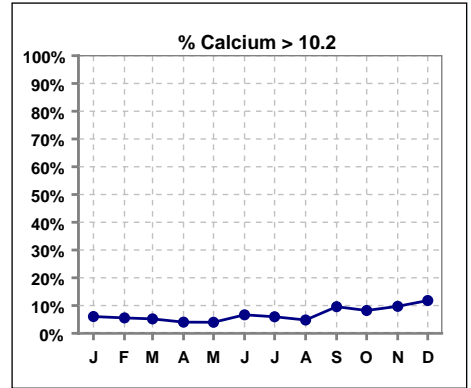
	Jan	Feb	Mar	Apr	May	Jun	Jul	Aug	Sep	Oct	Nov	Dec
# Calcium	149	144	154	149	151	150	151	146	146	146	144	144
# Calcium < 8.5	23	13	27	30	21	32	27	28	30	24	18	20
Pop. Mean	9.1	9.1	9.1	9.0	9.0	9.0	9.1	9.0	9.1	9.1	9.1	9.2
Std. Deviation	0.69	0.72	0.77	0.70	0.69	0.81	0.74	0.76	0.89	0.82	0.79	0.84
<b>% Calcium &lt; 8.5</b>	<b>15%</b>	<b>9%</b>	<b>18%</b>	<b>20%</b>	<b>14%</b>	<b>21%</b>	<b>18%</b>	<b>19%</b>	<b>21%</b>	<b>16%</b>	<b>13%</b>	<b>14%</b>



	Jan	Feb	Mar	Apr	May	Jun	Jul	Aug	Sep	Oct	Nov	Dec
# Calcium	149	144	154	149	151	150	151	146	146	146	144	144
# Calcium 8.5 to 10.2	117	123	119	113	124	108	115	111	102	110	112	107
Pop. Mean	9.1	9.1	9.1	9.0	9.0	9.0	9.1	9.0	9.1	9.1	9.1	9.2
Std. Deviation	0.69	0.72	0.77	0.70	0.69	0.81	0.74	0.76	0.89	0.82	0.79	0.84
<b>% Calcium 8.5 to 10.2</b>	<b>79%</b>	<b>85%</b>	<b>77%</b>	<b>76%</b>	<b>82%</b>	<b>72%</b>	<b>76%</b>	<b>76%</b>	<b>70%</b>	<b>75%</b>	<b>78%</b>	<b>74%</b>

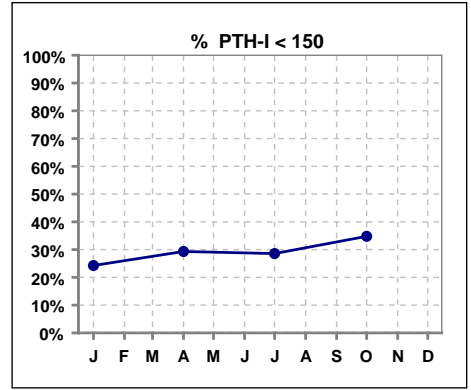


	Jan	Feb	Mar	Apr	May	Jun	Jul	Aug	Sep	Oct	Nov	Dec
# Calcium	149	144	154	149	151	150	151	146	146	146	144	144
# Calcium > 10.2	9	8	8	6	6	10	9	7	14	12	14	17
Pop. Mean	9.1	9.1	9.1	9.0	9.0	9.0	9.1	9.0	9.1	9.1	9.1	9.2
Std. Deviation	0.69	0.72	0.77	0.70	0.69	0.81	0.74	0.76	0.89	0.82	0.79	0.84
<b>% Calcium &gt; 10.2</b>	<b>6%</b>	<b>6%</b>	<b>5%</b>	<b>4%</b>	<b>4%</b>	<b>7%</b>	<b>6%</b>	<b>5%</b>	<b>10%</b>	<b>8%</b>	<b>10%</b>	<b>12%</b>

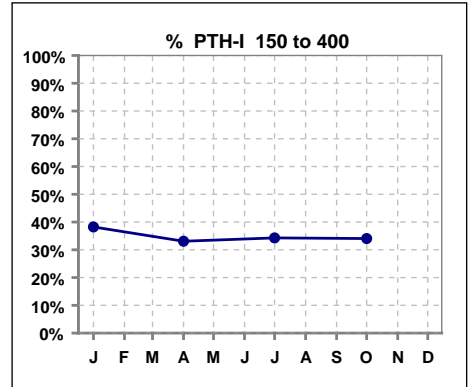


**III. OSTEODYSTROPHY - CONT.**

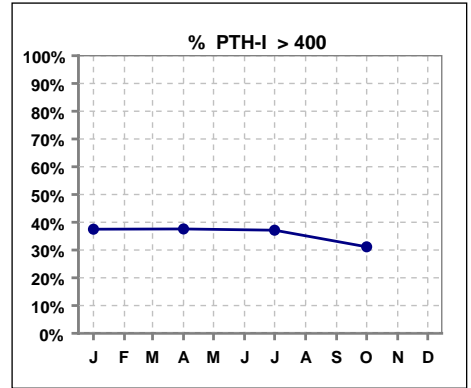
	Jan	Feb	Mar	Apr	May	Jun	Jul	Aug	Sep	Oct	Nov	Dec
# PTH-I	136			133			140			138		
# PTH-I < 150	33			39			40			48		
Pop. Mean	432			438			373			369		
Std. Deviation	414			498			358			442		
<b>% PTH-I &lt; 150</b>	<b>24%</b>			<b>29%</b>			<b>29%</b>			<b>35%</b>		



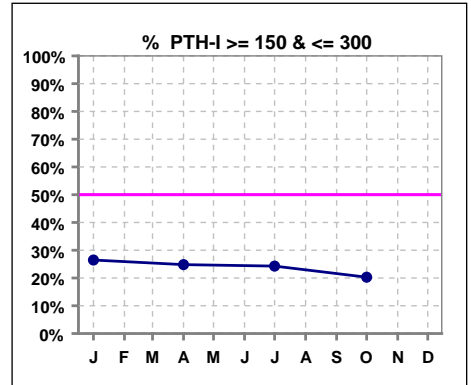
	Jan	Feb	Mar	Apr	May	Jun	Jul	Aug	Sep	Oct	Nov	Dec
# PTH-I	136			133			140			138		
# PTH-I 150 to 400	52			44			48			47		
Pop. Mean	432			438			373			369		
Std. Deviation	414			498			358			442		
<b>% PTH-I 150 to 400</b>	<b>38%</b>			<b>33%</b>			<b>34%</b>			<b>34%</b>		



	Jan	Feb	Mar	Apr	May	Jun	Jul	Aug	Sep	Oct	Nov	Dec
# PTH-I	136			133			140			138		
# PTH-I > 400	51			50			52			43		
Pop. Mean	432			438			373			369		
Std. Deviation	414			498			358			442		
<b>% PTH-I &gt; 400</b>	<b>38%</b>			<b>38%</b>			<b>37%</b>			<b>31%</b>		



	Jan	Feb	Mar	Apr	May	Jun	Jul	Aug	Sep	Oct	Nov	Dec
# PTH-I	136			133			140			138		
# PTH-I >=150 & <=300	36			33			34			28		
Pop. Mean	432			438			373			369		
Std. Deviation	414			498			358			442		
<b>% PTH-I &gt;=150 &amp; &lt;=300</b>	<b>26%</b>			<b>25%</b>			<b>24%</b>			<b>20%</b>		

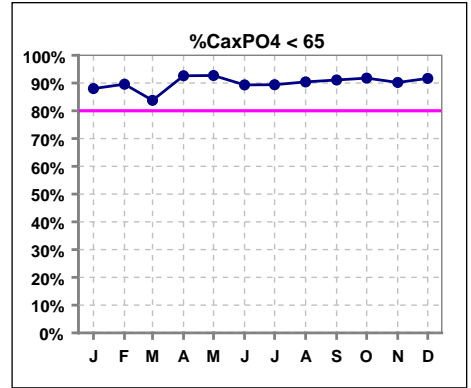


Methodology: a) Kt/V, CRCL and nPNa values are 4 month rolling mean of last value for each month, all other report lab results are based on last value of month; b) BP's are average of all values for month.



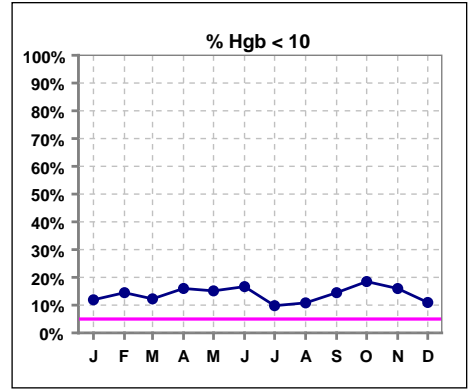
**III. OSTEODYSTROPHY - CONT.**

	Jan	Feb	Mar	Apr	May	Jun	Jul	Aug	Sep	Oct	Nov	Dec
# Ca x PO4	150	144	154	149	151	150	151	146	146	146	143	144
# Ca x PO4 < 65	132	129	129	138	140	134	135	132	133	134	129	132
Pop. Mean	45.0	45.9	46.8	44.7	44.5	46.0	46.1	45.3	44.6	43.7	44.8	44.7
Std. Deviation	15.1	15.0	15.4	14.2	13.3	14.8	15.5	13.0	14.3	13.6	15.6	14.5
<b>% CaxPO4 &lt; 65</b>	<b>88%</b>	<b>90%</b>	<b>84%</b>	<b>93%</b>	<b>93%</b>	<b>89%</b>	<b>89%</b>	<b>90%</b>	<b>91%</b>	<b>92%</b>	<b>90%</b>	<b>92%</b>

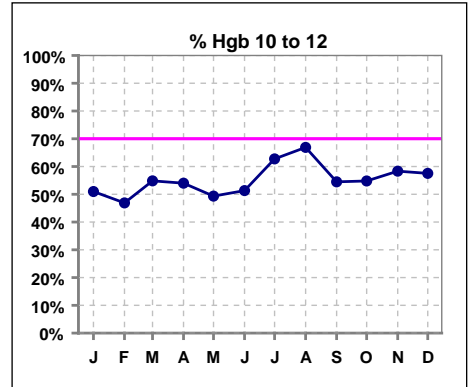


**IV. ANEMIA**

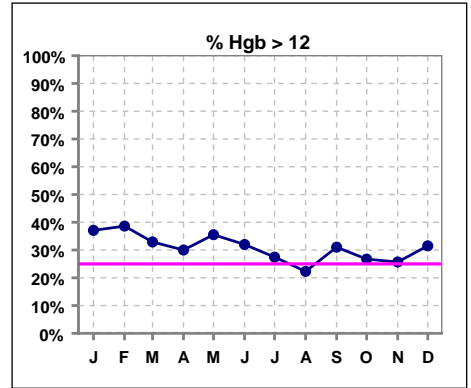
	Jan	Feb	Mar	Apr	May	Jun	Jul	Aug	Sep	Oct	Nov	Dec
# Hgb	151	145	155	150	152	150	153	148	145	146	144	146
# Hgb < 10	18	21	19	24	23	25	15	16	21	27	23	16
Pop. Mean	11.5	11.6	11.4	11.5	11.5	11.4	11.4	11.3	11.3	11.2	11.3	11.4
Std. Deviation	1.5	1.5	1.5	1.5	1.5	1.4	1.3	1.3	1.5	1.5	1.4	1.4
% Hgb < 10	12%	14%	12%	16%	15%	17%	10%	11%	14%	18%	16%	11%



	Jan	Feb	Mar	Apr	May	Jun	Jul	Aug	Sep	Oct	Nov	Dec
# Hgb	151	145	155	150	152	150	153	148	145	146	144	146
# Hgb 10 to 12	77	68	85	81	75	77	96	99	79	80	84	84
Pop. Mean	11.5	11.6	11.4	11.5	11.5	11.4	11.4	11.3	11.3	11.2	11.3	11.4
Std. Deviation	1.5	1.5	1.5	1.5	1.5	1.4	1.3	1.3	1.5	1.5	1.4	1.4
% Hgb 10 to 12	51%	47%	55%	54%	49%	51%	63%	67%	54%	55%	58%	58%



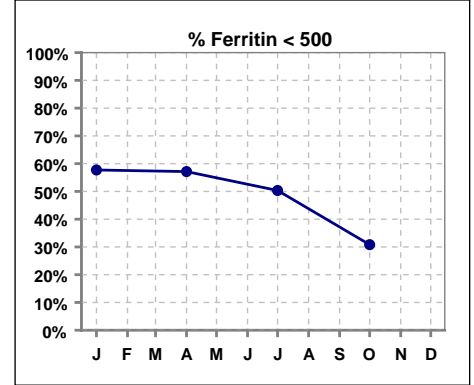
	Jan	Feb	Mar	Apr	May	Jun	Jul	Aug	Sep	Oct	Nov	Dec
# Hgb	151	145	155	150	152	150	153	148	145	146	144	146
# Hgb > 12	56	56	51	45	54	48	42	33	45	39	37	46
Pop. Mean	11.5	11.6	11.4	11.5	11.5	11.4	11.4	11.3	11.3	11.2	11.3	11.4
Std. Deviation	1.5	1.5	1.5	1.5	1.5	1.4	1.3	1.3	1.5	1.5	1.4	1.4
% Hgb > 12	37%	39%	33%	30%	36%	32%	27%	22%	31%	27%	26%	32%



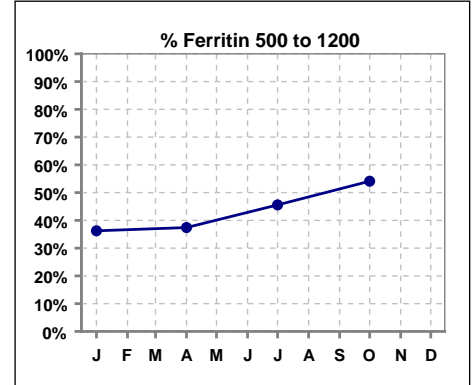
**IV. ANEMIA - CONT.**

**Iron Profile**

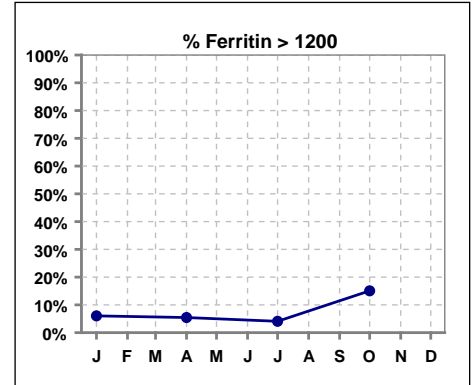
	Jan	Feb	Mar	Apr	May	Jun	Jul	Aug	Sep	Oct	Nov	Dec
# Ferritin	149			147			147			146		
# Ferritin < 500	86			84			74			45		
Pop. Mean	512			515			534			750		
Std. Deviation	396			351			342			450		
<b>% Ferritin &lt; 500</b>	<b>58%</b>			<b>57%</b>			<b>50%</b>			<b>31%</b>		



	Jan	Feb	Mar	Apr	May	Jun	Jul	Aug	Sep	Oct	Nov	Dec
# Ferritin	149			147			147			146		
# Ferritin 500 to 1200	54			55			67			79		
Pop. Mean	512			515			534			750		
Std. Deviation	396			351			342			450		
<b>% Ferritin 500 to 1200</b>	<b>36%</b>			<b>37%</b>			<b>46%</b>			<b>54%</b>		

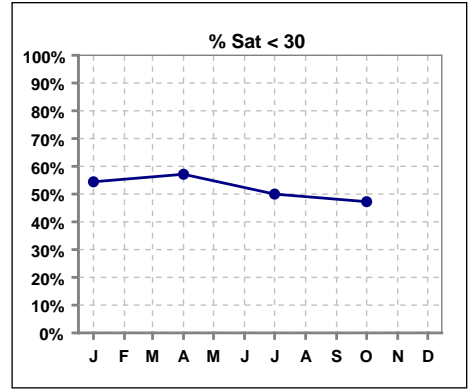


	Jan	Feb	Mar	Apr	May	Jun	Jul	Aug	Sep	Oct	Nov	Dec
# Ferritin	149			147			147			146		
# Ferritin > 1200	9			8			6			22		
Pop. Mean	512			515			534			750		
Std. Deviation	396			351			342			450		
<b>% Ferritin &gt; 1200</b>	<b>6%</b>			<b>5%</b>			<b>4%</b>			<b>15%</b>		

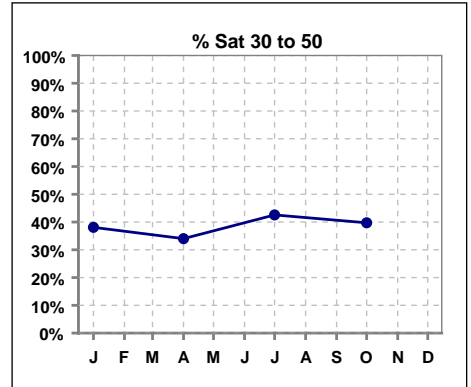


**IV. ANEMIA - CONT.**

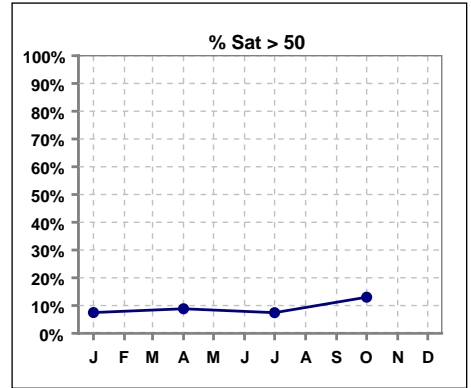
	Jan	Feb	Mar	Apr	May	Jun	Jul	Aug	Sep	Oct	Nov	Dec
# % Sat	147			147			148			146		
# % Sat < 30	80			84			74			69		
Pop. Mean	31			30			31			34		
Std. Deviation	24			16			14			17		
<b>% % Sat &lt; 30</b>	<b>54%</b>			<b>57%</b>			<b>50%</b>			<b>47%</b>		



	Jan	Feb	Mar	Apr	May	Jun	Jul	Aug	Sep	Oct	Nov	Dec
# % Sat	147			147			148			146		
# % Sat 30 to 50	56			50			63			58		
Pop. Mean	31			30			31			34		
Std. Deviation	24			16			14			17		
<b>% Sat% 30 to 50</b>	<b>38%</b>			<b>34%</b>			<b>43%</b>			<b>40%</b>		

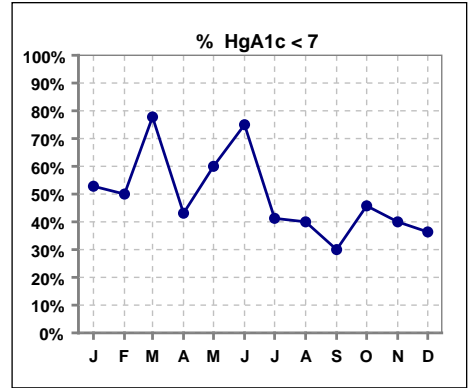


	Jan	Feb	Mar	Apr	May	Jun	Jul	Aug	Sep	Oct	Nov	Dec
# % Sat	147			147			148			146		
# % Sat > 50	11			13			11			19		
Pop. Mean	31			30			31			34		
Std. Deviation	24			16			14			17		
<b>% Sat% &gt; 50</b>	<b>7%</b>			<b>9%</b>			<b>7%</b>			<b>13%</b>		



**V. Diabetes**

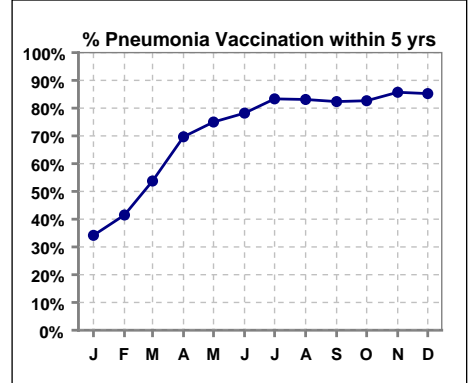
	Jan	Feb	Mar	Apr	May	Jun	Jul	Aug	Sep	Oct	Nov	Dec
# HgA1c	53	6	9	58	10	4	63	10	10	59	10	11
# HgA1c < 7	28	3	7	25	6	3	26	4	3	27	4	4
Pop. Mean	7.4	7.5	6.5	7.2	7.4	6.9	7.3	7.2	7.5	7.2	7.3	7.2
Std. Deviation	1.59	1.91	1.09	1.35	1.84	1.05	1.23	1.00	1.33	1.21	1.18	1.13
% HgA1c < 7	53%	50%	78%	43%	60%	75%	41%	40%	30%	46%	40%	36%



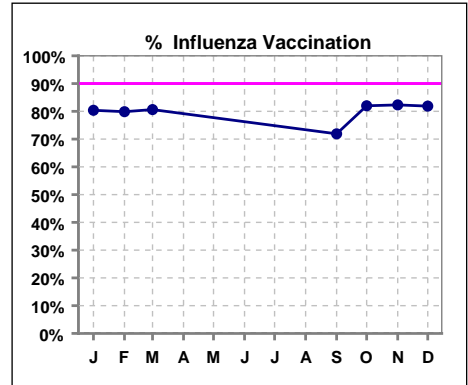
**VI. Infection Control**

**Pneumonia vaccination within the past five years**

	Jan	Feb	Mar	Apr	May	Jun	Jul	Aug	Sep	Oct	Nov	Dec
# Patient	158	159	160	155	156	156	156	154	153	150	147	149
# Pneumonia	54	66	86	108	117	122	130	128	126	124	126	127
<b>% Pneumonia</b>	<b>34%</b>	<b>42%</b>	<b>54%</b>	<b>70%</b>	<b>75%</b>	<b>78%</b>	<b>83%</b>	<b>83%</b>	<b>82%</b>	<b>83%</b>	<b>86%</b>	<b>85%</b>



	Jan	Feb	Mar	Apr	May	Jun	Jul	Aug	Sep	Oct	Nov	Dec
# Patient	158	159	160						153	150	147	149
# Influenza	127	127	129						110	123	121	122
<b>% Influenza</b>	<b>80%</b>	<b>80%</b>	<b>81%</b>						<b>72%</b>	<b>82%</b>	<b>82%</b>	<b>82%</b>



**Exit Site Infection Rate**

	Jan	Feb	Mar	Apr	May	Jun	Jul	Aug	Sep	Oct	Nov	Dec
Current Month	30.83	34.13	38.48	50.39	52.33	50.49	158.58	39.17	49.52	152.86	0	74.74
Rolling Year-to-date	0.28	0.28	0.29	0.30	0.27	0.26	0.25	0.27	0.25	0.24	0.24	0.22

**Peritonitis Infection Rate**

	Jan	Feb	Mar	Apr	May	Jun	Jul	Aug	Sep	Oct	Nov	Dec
Current Month	38.54	34.13	30.78	25.20	22.43	30.30	52.86	78.34	24.76	25.48	20.56	37.37
Rolling Year-to-date	0.31	0.30	0.32	0.32	0.34	0.33	0.33	0.30	0.31	0.34	0.37	0.38