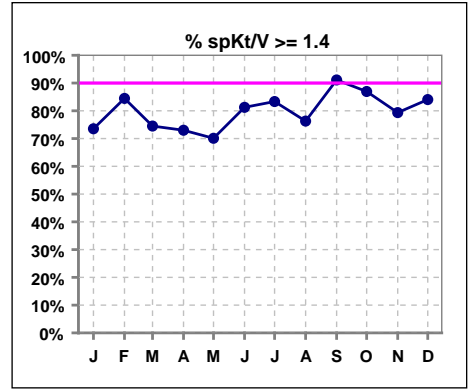
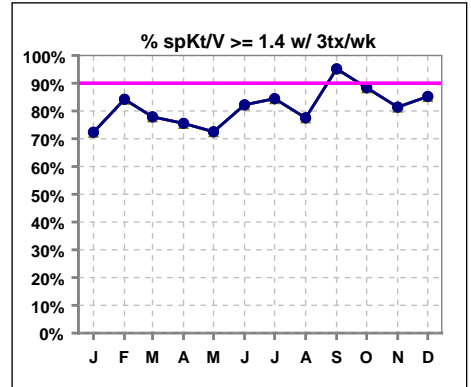


I. ADEQUACY OF DIALYSIS

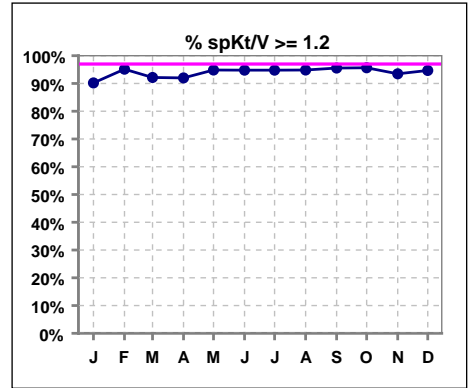
	Jan	Feb	Mar	Apr	May	Jun	Jul	Aug	Sep	Oct	Nov	Dec
# spKt/V	102	103	102	100	97	96	96	97	90	92	92	94
# spKt/V >= 1.4	75	87	76	73	68	78	80	74	82	80	73	79
Pop. Mean	1.60	1.64	1.55	1.54	1.57	1.63	1.63	1.60	1.67	1.65	1.63	1.61
Std. Deviation	0.38	0.27	0.28	0.28	0.28	0.29	0.27	0.27	0.28	0.26	0.29	0.29
% spKt/V >= 1.4	74%	84%	75%	73%	70%	81%	83%	76%	91%	87%	79%	84%



	Jan	Feb	Mar	Apr	May	Jun	Jul	Aug	Sep	Oct	Nov	Dec
# spKt/V w/ 3tx/wk	94	95	95	94	91	90	90	89	83	86	86	88
# spKt/V >= 1.4 w/3tx/wk	68	80	74	71	66	74	76	69	79	76	70	75
Pop. Mean	1.58	1.63	1.57	1.55	1.59	1.65	1.65	1.61	1.70	1.67	1.65	1.61
Std. Deviation	0.39	0.27	0.28	0.28	0.28	0.28	0.27	0.27	0.26	0.26	0.28	0.29
% >= 1.4 w/3tx/wk	72%	84%	78%	76%	73%	82%	84%	78%	95%	88%	81%	85%

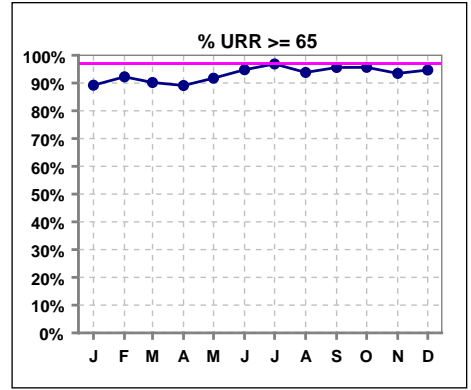


	Jan	Feb	Mar	Apr	May	Jun	Jul	Aug	Sep	Oct	Nov	Dec
# spKt/V	102	103	102	100	97	96	96	97	90	92	92	94
# spKt/V >= 1.2	92	98	94	92	92	91	91	92	86	88	86	89
Pop. Mean	1.60	1.64	1.55	1.54	1.57	1.63	1.63	1.60	1.67	1.65	1.63	1.61
Std. Deviation	0.38	0.27	0.28	0.28	0.28	0.29	0.27	0.27	0.28	0.26	0.29	0.29
% spKt/V >= 1.2	90%	95%	92%	92%	95%	95%	95%	95%	96%	96%	93%	95%

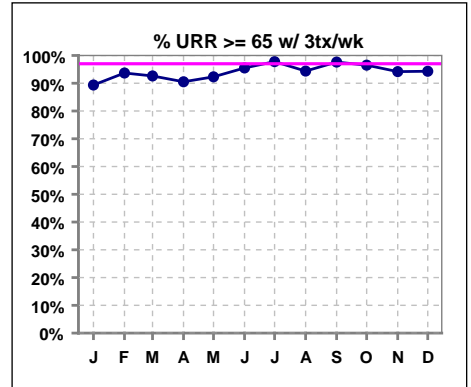


I. ADEQUACY OF DIALYSIS - CONT.

	Jan	Feb	Mar	Apr	May	Jun	Jul	Aug	Sep	Oct	Nov	Dec
# URR	102	103	102	101	97	96	96	97	91	92	92	94
# URR >= 65	91	95	92	90	89	91	93	91	87	88	86	89
Pop. Mean	73	74	73	73	74	75	75	74	75	75	75	74
Std. Deviation	8.00	5.86	5.74	7.21	6.49	6.04	5.87	5.84	6.12	5.77	6.03	6.58
% URR >= 65	89%	92%	90%	89%	92%	95%	97%	94%	96%	96%	93%	95%



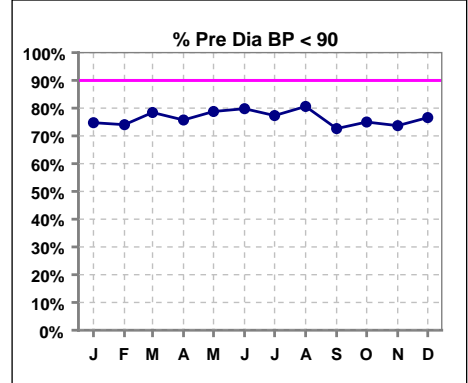
	Jan	Feb	Mar	Apr	May	Jun	Jul	Aug	Sep	Oct	Nov	Dec
# URR w/ 3tx/wk	94	95	95	95	91	89	90	89	84	86	86	88
# URR>=65 w/ 3tx/wk	84	89	88	86	84	85	88	84	82	83	81	83
Pop. Mean	73	75	73	73	74	75	75	74	76	76	75	74
Std. Deviation	8.15	5.55	5.61	7.13	6.34	5.70	5.78	5.83	4.81	5.58	5.74	6.68
% URR>=65 w/ 3tx/wk	89%	94%	93%	91%	92%	96%	98%	94%	98%	97%	94%	94%



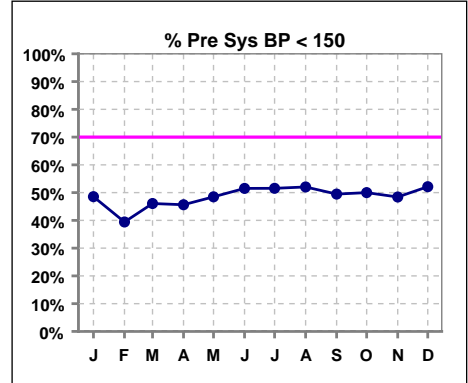
I. ADEQUACY OF DIALYSIS - CONT.

Blood Pressure Control (Pre)

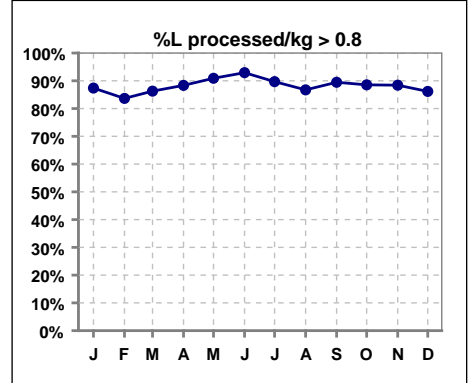
	Jan	Feb	Mar	Apr	May	Jun	Jul	Aug	Sep	Oct	Nov	Dec
# Pre Dia BP	103	104	102	103	99	99	97	98	95	96	95	94
# Pre Dia BP < 90	77	77	80	78	78	79	75	79	69	72	70	72
Pop. Mean	81	82	81	81	79	78	79	78	79	80	81	80
Std. Deviation	16.5	15.1	14.7	15.0	14.3	14.0	15.8	15.5	17.6	17.3	17.1	15.9
% Pre Dia BP < 90	75%	74%	78%	76%	79%	80%	77%	81%	73%	75%	74%	77%



	Jan	Feb	Mar	Apr	May	Jun	Jul	Aug	Sep	Oct	Nov	Dec
# Pre Sys BP	103	104	102	103	99	99	97	98	95	96	95	94
# Pre Sys BP < 150	50	41	47	47	48	51	50	51	47	48	46	49
Pop. Mean	151	154	152	152	151	149	149	149	150	151	152	151
Std. Deviation	19.6	20.6	20.0	21.4	23.7	22.4	23.4	21.7	24.0	22.7	23.1	23.1
%Pre Sys BP <150	49%	39%	46%	46%	48%	52%	52%	52%	49%	50%	48%	52%



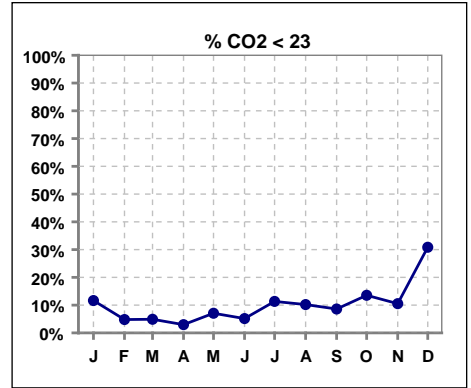
	Jan	Feb	Mar	Apr	May	Jun	Jul	Aug	Sep	Oct	Nov	Dec
# L processed/kg	103	104	102	103	99	99	97	98	95	96	95	94
# L processed/kg>0.8	90	87	88	91	90	92	87	85	85	85	84	81
Pop. Mean	1	1	1	1	1	1	1	1	1	1	1	1
Std. Deviation	0.2	0.2	0.2	0.2	0.2	0.2	0.2	0.3	0.3	0.3	0.3	0.2
% L processed/kg>0.8	87%	84%	86%	88%	91%	93%	90%	87%	89%	89%	88%	86%



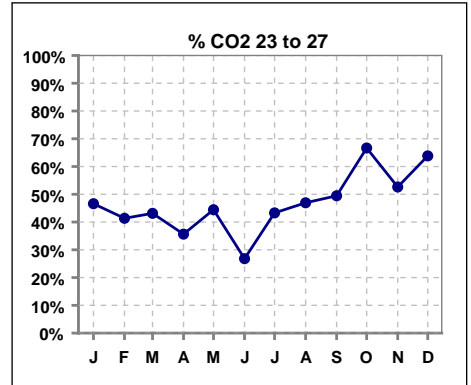
Methodology: a) All labs for 'Adequacy of Dialysis', 'Nutrition', 'Osteodystrophy', 'Anemia' and 'Diabetes' based on last value of month; b) BP's and #L processed are average of all values for month; c) Access data takes last access of month; d) Values for SGA and 'Infection Control' use most recent result.

I. ADEQUACY OF DIALYSIS - CONT.

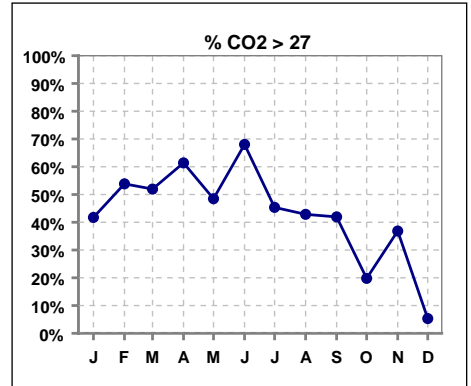
	Jan	Feb	Mar	Apr	May	Jun	Jul	Aug	Sep	Oct	Nov	Dec
# CO2	103	104	102	101	99	97	97	98	93	96	95	94
# CO2 < 23	12	5	5	3	7	5	11	10	8	13	10	29
Pop. Mean	26	27	27	28	27	28	27	27	26	26	26	24
Std. Deviation	3.33	2.50	2.76	3.13	2.75	2.66	3.24	2.72	3.04	2.66	2.87	2.56
% CO2 < 23	12%	5%	5%	3%	7%	5%	11%	10%	9%	14%	11%	31%



	Jan	Feb	Mar	Apr	May	Jun	Jul	Aug	Sep	Oct	Nov	Dec
# CO2	103	104	102	101	99	97	97	98	93	96	95	94
# CO2 23 to 27	48	43	44	36	44	26	42	46	46	64	50	60
Pop. Mean	26	27	27	28	27	28	27	27	26	26	26	24
Std. Deviation	3.33	2.50	2.76	3.13	2.75	2.66	3.24	2.72	3.04	2.66	2.87	2.56
% CO2 23 to 27	47%	41%	43%	36%	44%	27%	43%	47%	49%	67%	53%	64%



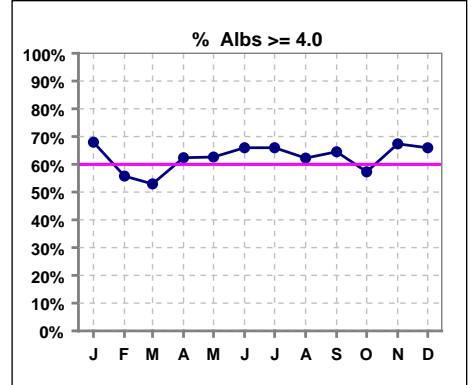
	Jan	Feb	Mar	Apr	May	Jun	Jul	Aug	Sep	Oct	Nov	Dec
# CO2	103	104	102	101	99	97	97	98	93	96	95	94
# CO2 > 27	43	56	53	62	48	66	44	42	39	19	35	5
Pop. Mean	26	27	27	28	27	28	27	27	26	26	26	24
Std. Deviation	3.33	2.50	2.76	3.13	2.75	2.66	3.24	2.72	3.04	2.66	2.87	2.56
% CO2 > 27	42%	54%	52%	61%	48%	68%	45%	43%	42%	20%	37%	5%



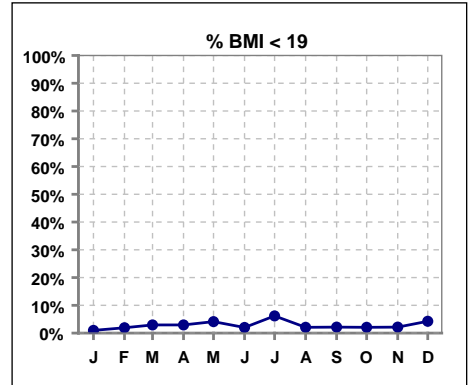
*Albumin values use BCG method - as of July 2001

II. NUTRITION

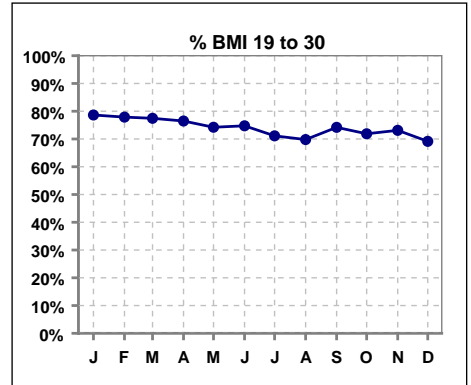
	Jan	Feb	Mar	Apr	May	Jun	Jul	Aug	Sep	Oct	Nov	Dec
# Albumin	103	104	102	101	99	97	97	98	93	96	95	94
# Albumin >= 4.0	70	58	54	63	62	64	64	61	60	55	64	62
Pop. Mean	4.0	4.0	3.9	4.0	4.0	4.0	4.0	4.0	4.0	4.0	4.0	4.1
Std. Deviation	0.32	0.24	0.29	0.30	0.34	0.31	0.30	0.30	0.31	0.29	0.34	0.36
% Alb >= 3.5	95%	97%	92%	98%	93%	94%	94%	95%	97%	95%	94%	95%
% Alb >= 3.0	100%	100%	100%	100%	99%	99%	100%	100%	99%	99%	98%	98%
% Alb >= 4.0	68%	56%	53%	62%	63%	66%	66%	62%	65%	57%	67%	66%



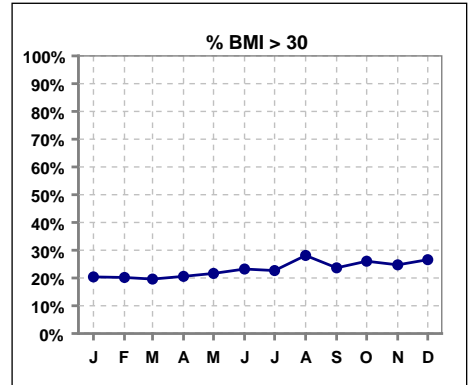
	Jan	Feb	Mar	Apr	May	Jun	Jul	Aug	Sep	Oct	Nov	Dec
# BMI	103	104	102	102	97	99	97	96	93	96	93	94
# BMI < 19	1	2	3	3	4	2	6	2	2	2	2	4
Pop. Mean	27	26	26	26	27	28	26	27	27	27	28	28
Std. Deviation	5.8	5.9	5.8	6.0	6.3	16.4	5.8	6.5	6.5	6.1	13.4	13.3
% BMI < 19	1%	2%	3%	3%	4%	2%	6%	2%	2%	2%	2%	4%



	Jan	Feb	Mar	Apr	May	Jun	Jul	Aug	Sep	Oct	Nov	Dec
# BMI	103	104	102	102	97	99	97	96	93	96	93	94
# BMI 19 to 30	81	81	79	78	72	74	69	67	69	69	68	65
Pop. Mean	27	26	26	26	27	28	26	27	27	27	28	28
Std. Deviation	5.8	5.9	5.8	6.0	6.3	16.4	5.8	6.5	6.5	6.1	13.4	13.3
% BMI 19 to 30	79%	78%	77%	76%	74%	75%	71%	70%	74%	72%	73%	69%



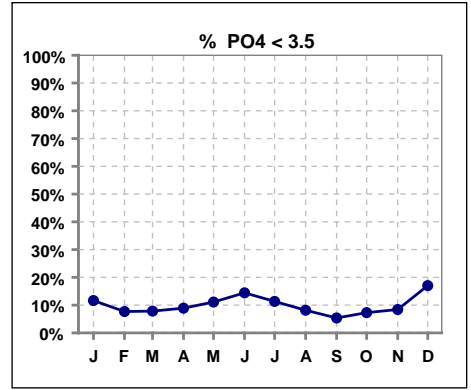
	Jan	Feb	Mar	Apr	May	Jun	Jul	Aug	Sep	Oct	Nov	Dec
# BMI	103	104	102	102	97	99	97	96	93	96	93	94
# BMI > 30	21	21	20	21	21	23	22	27	22	25	23	25
Pop. Mean	27	26	26	26	27	28	26	27	27	27	28	28
Std. Deviation	5.8	5.9	5.8	6.0	6.3	16.4	5.8	6.5	6.5	6.1	13.4	13.3
% BMI > 30	20%	20%	20%	21%	22%	23%	23%	28%	24%	26%	25%	27%



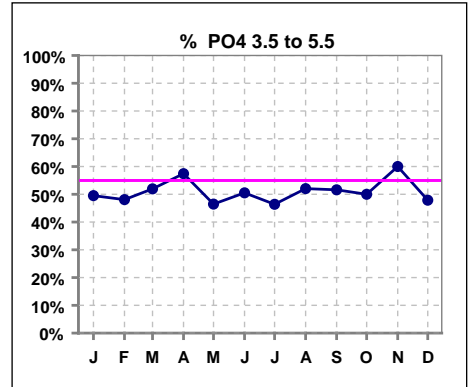
Methodology: a) All labs for 'Adequacy of Dialysis', 'Nutrition', 'Osteodystrophy', 'Anemia' and 'Diabetes' based on last value of month; b) BP's and #L processed are average of all values for month; c) Access data takes last access of month; d) Values for SGA and 'Infection Control' use most recent result.

III. OSTEODYSTROPHY

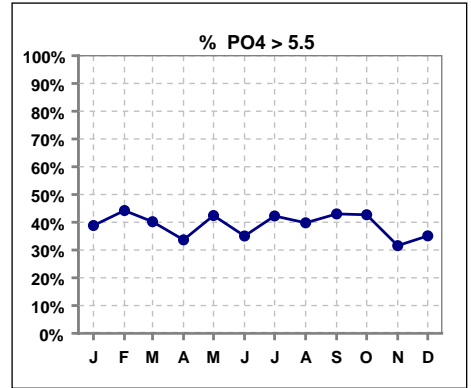
	Jan	Feb	Mar	Apr	May	Jun	Jul	Aug	Sep	Oct	Nov	Dec
# PO4	103	104	102	101	99	97	97	98	93	96	95	94
# PO4 < 3.5	12	8	8	9	11	14	11	8	5	7	8	16
Pop. Mean	5.4	5.4	5.4	5.3	5.4	5.3	5.5	5.5	5.5	5.6	5.2	5.2
Std. Deviation	1.82	1.45	1.56	1.59	1.58	1.76	1.95	1.85	1.66	1.98	1.52	1.83
% PO4 < 3.5	12%	8%	8%	9%	11%	14%	11%	8%	5%	7%	8%	17%



	Jan	Feb	Mar	Apr	May	Jun	Jul	Aug	Sep	Oct	Nov	Dec
# PO4	103	104	102	101	99	97	97	98	93	96	95	94
# PO4 3.5 to 5.5	51	50	53	58	46	49	45	51	48	48	57	45
Pop. Mean	5.4	5.4	5.4	5.3	5.4	5.3	5.5	5.5	5.5	5.6	5.2	5.2
Std. Deviation	1.82	1.45	1.56	1.59	1.58	1.76	1.95	1.85	1.66	1.98	1.52	1.83
% PO4 3.5 to 5.5	50%	48%	52%	57%	46%	51%	46%	52%	52%	50%	60%	48%

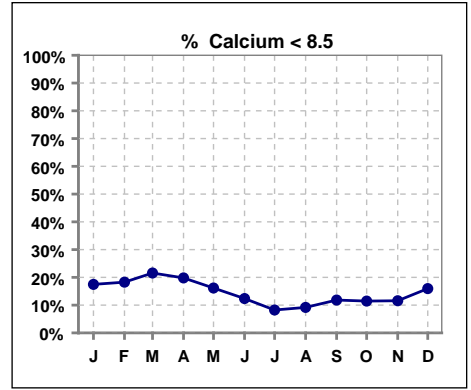


	Jan	Feb	Mar	Apr	May	Jun	Jul	Aug	Sep	Oct	Nov	Dec
# PO4	103	104	102	101	99	97	97	98	93	96	95	94
# PO4 > 5.5	40	46	41	34	42	34	41	39	40	41	30	33
Pop. Mean	5.4	5.4	5.4	5.3	5.4	5.3	5.5	5.5	5.5	5.6	5.2	5.2
Std. Deviation	1.82	1.45	1.56	1.59	1.58	1.76	1.95	1.85	1.66	1.98	1.52	1.83
% PO4 > 5.5	39%	44%	40%	34%	42%	35%	42%	40%	43%	43%	32%	35%

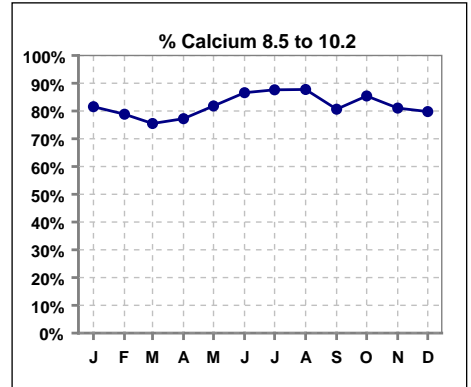


III. OSTEODYSTROPHY - CONT.

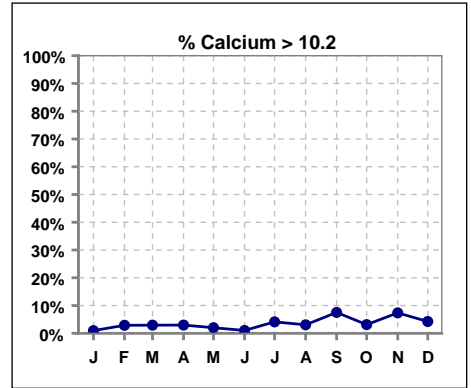
	Jan	Feb	Mar	Apr	May	Jun	Jul	Aug	Sep	Oct	Nov	Dec
# Calcium	103	104	102	101	99	97	97	98	93	96	95	94
# Calcium < 8.5	18	19	22	20	16	12	8	9	11	11	11	15
Pop. Mean	9.1	9.1	9.0	9.1	9.2	9.2	9.3	9.3	9.3	9.3	9.2	9.2
Std. Deviation	0.76	0.72	0.75	0.77	0.65	0.68	0.65	0.61	0.72	0.63	0.73	0.79
% Calcium < 8.5	17%	18%	22%	20%	16%	12%	8%	9%	12%	11%	12%	16%



	Jan	Feb	Mar	Apr	May	Jun	Jul	Aug	Sep	Oct	Nov	Dec
# Calcium	103	104	102	101	99	97	97	98	93	96	95	94
# Calcium 8.5 to 10.2	84	82	77	78	81	84	85	86	75	82	77	75
Pop. Mean	9.1	9.1	9.0	9.1	9.2	9.2	9.3	9.3	9.3	9.3	9.2	9.2
Std. Deviation	0.76	0.72	0.75	0.77	0.65	0.68	0.65	0.61	0.72	0.63	0.73	0.79
% Calcium 8.5 to 10.2	82%	79%	75%	77%	82%	87%	88%	88%	81%	85%	81%	80%

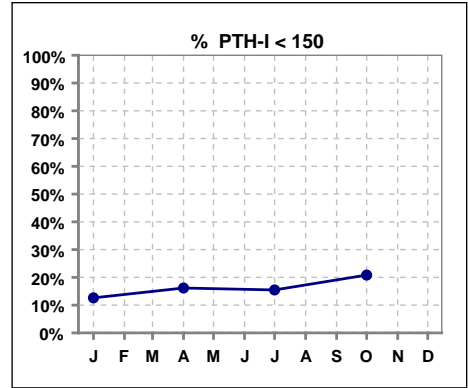


	Jan	Feb	Mar	Apr	May	Jun	Jul	Aug	Sep	Oct	Nov	Dec
# Calcium	103	104	102	101	99	97	97	98	93	96	95	94
# Calcium > 10.2	1	3	3	3	2	1	4	3	7	3	7	4
Pop. Mean	9.1	9.1	9.0	9.1	9.2	9.2	9.3	9.3	9.3	9.3	9.2	9.2
Std. Deviation	0.76	0.72	0.75	0.77	0.65	0.68	0.65	0.61	0.72	0.63	0.73	0.79
% Calcium > 10.2	1%	3%	3%	3%	2%	1%	4%	3%	8%	3%	7%	4%

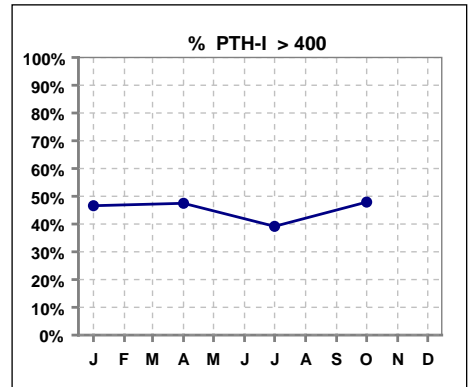


III. OSTEODYSTROPHY - CONT.

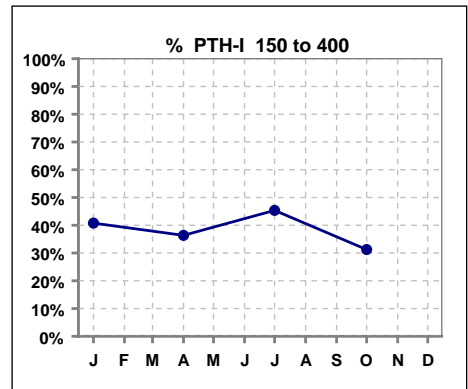
	Jan	Feb	Mar	Apr	May	Jun	Jul	Aug	Sep	Oct	Nov	Dec
# PTH-I	103			99			97			96		
# PTH-I < 150	13			16			15			20		
Pop. Mean	515			549			456			522		
Std. Deviation	516			443			370			520		
% PTH-I < 150	13%			16%			15%			21%		



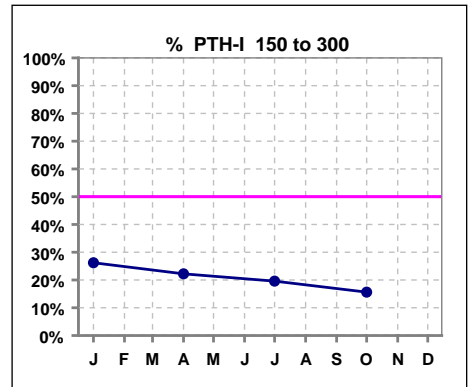
	Jan	Feb	Mar	Apr	May	Jun	Jul	Aug	Sep	Oct	Nov	Dec
# PTH-I	103			99			97			96		
# PTH-I > 400	48			47			38			46		
Pop. Mean	515			549			456			522		
Std. Deviation	516			443			370			520		
% PTH-I > 400	47%			47%			39%			48%		



	Jan	Feb	Mar	Apr	May	Jun	Jul	Aug	Sep	Oct	Nov	Dec
# PTH-I	103			99			97			96		
# PTH-I 150 to 400	42			36			44			30		
Pop. Mean	515			549			456			522		
Std. Deviation	516			443			370			520		
% PTH-I 150 to 400	41%			36%			45%			31%		



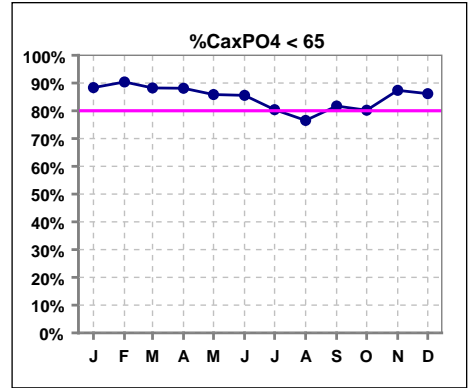
	Jan	Feb	Mar	Apr	May	Jun	Jul	Aug	Sep	Oct	Nov	Dec
# PTH-I	103			99			97			96		
# PTH-I 150 to 300	27			22			19			15		
Pop. Mean	515			549			456			522		
Std. Deviation	516			443			370			520		
% PTH-I 150 to 300	26%			22%			20%			16%		



Methodology: a) All labs for 'Adequacy of Dialysis', 'Nutrition', 'Osteodystrophy', 'Anemia' and 'Diabetes' based on last value of month; b) BP's and #L processed are average of all values for month; c) Access data takes last access of month; d) Values for SGA and 'Infection Control' use most recent result.

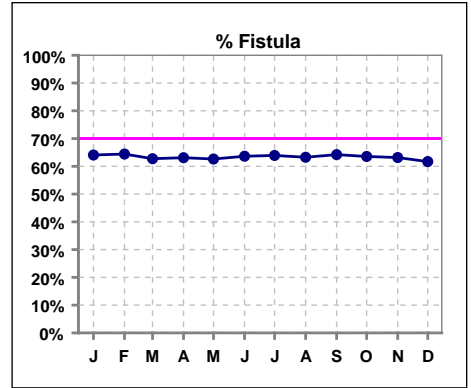
III. OSTEODYSTROPHY - CONT.

	Jan	Feb	Mar	Apr	May	Jun	Jul	Aug	Sep	Oct	Nov	Dec
# Ca x PO4	103	104	102	101	99	97	97	98	93	96	95	94
# Ca x PO4 < 65	91	94	90	89	85	83	78	75	76	77	83	81
Pop. Mean	48.6	48.8	48.1	48.9	49.6	48.9	51.3	51.6	51.7	52.0	47.7	48.4
Std. Deviation	15.5	13.8	14.7	15.5	14.7	15.9	18.5	17.3	15.7	18.5	14.4	17.2
% Ca x PO4 < 65	88%	90%	88%	88%	86%	86%	80%	77%	82%	80%	87%	86%

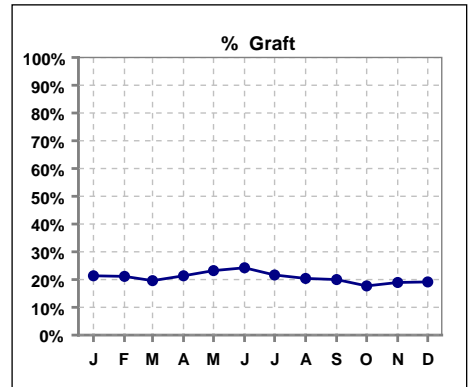


IV. ACCESS

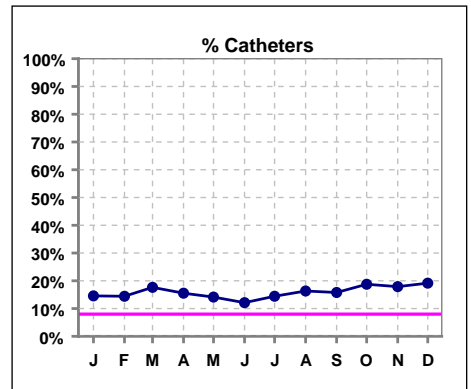
	Jan	Feb	Mar	Apr	May	Jun	Jul	Aug	Sep	Oct	Nov	Dec
# Access	103	104	102	103	99	99	97	98	95	96	95	94
# Fistula	66	67	64	65	62	63	62	62	61	61	60	58
% Fistula	64%	64%	63%	63%	63%	64%	64%	63%	64%	64%	63%	62%



	Jan	Feb	Mar	Apr	May	Jun	Jul	Aug	Sep	Oct	Nov	Dec
# Access	103	104	102	103	99	99	97	98	95	96	95	94
# Graft	22	22	20	22	23	24	21	20	19	17	18	18
% Graft	21%	21%	20%	21%	23%	24%	22%	20%	20%	18%	19%	19%



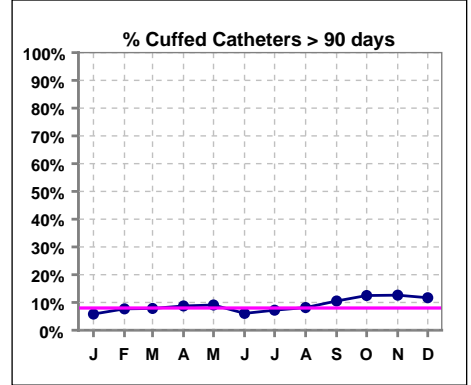
	Jan	Feb	Mar	Apr	May	Jun	Jul	Aug	Sep	Oct	Nov	Dec
# Access	103	104	102	103	99	99	97	98	95	96	95	94
# Catheters	15	15	18	16	14	12	14	16	15	18	17	18
% Catheters	15%	14%	18%	16%	14%	12%	14%	16%	16%	19%	18%	19%



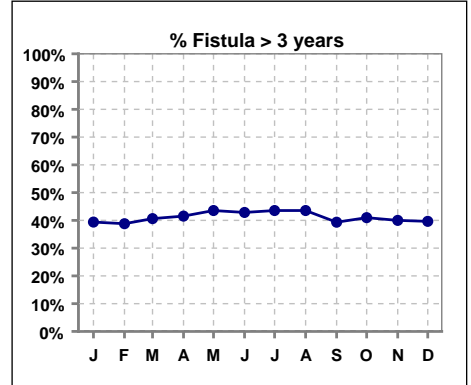
IV. ACCESS - CONT.

Cuffed Catheters > 90 days

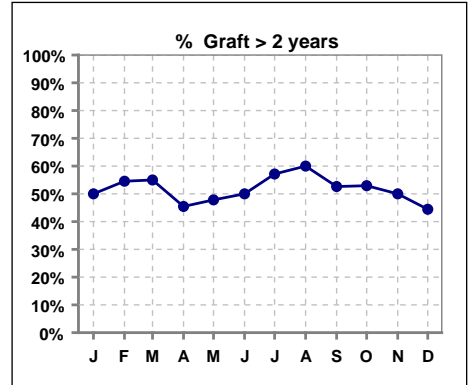
	Jan	Feb	Mar	Apr	May	Jun	Jul	Aug	Sep	Oct	Nov	Dec
# Access	103	104	102	103	99	99	97	98	95	96	95	94
# Cuffed Catheters	6	8	8	9	9	6	7	8	10	12	12	11
% Cuffed Catheters	6%	8%	8%	9%	9%	6%	7%	8%	11%	13%	13%	12%



	Jan	Feb	Mar	Apr	May	Jun	Jul	Aug	Sep	Oct	Nov	Dec
# Fistula	66	67	64	65	62	63	62	62	61	61	60	58
# Fistula > 3 yrs	26	26	26	27	27	27	27	27	24	25	24	23
% Fistula > 3 yrs	39%	39%	41%	42%	44%	43%	44%	44%	39%	41%	40%	40%



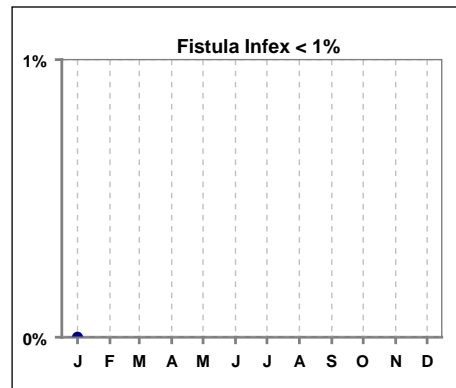
	Jan	Feb	Mar	Apr	May	Jun	Jul	Aug	Sep	Oct	Nov	Dec
# Graft	22	22	20	22	23	24	21	20	19	17	18	18
# Graft > 2 yrs	11	12	11	10	11	12	12	12	10	9	9	8
% Graft > 2 yrs	50%	55%	55%	45%	48%	50%	57%	60%	53%	53%	50%	44%



IV. ACCESS - CONT.

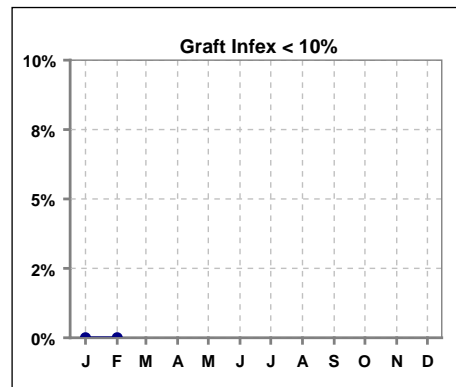
Infection per use-life of access fistula

	Jan	Feb	Mar	Apr	May	Jun	Jul	Aug	Sep	Oct	Nov	Dec
Infex per use-life	0											



Infection per use-life of access graft

	Jan	Feb	Mar	Apr	May	Jun	Jul	Aug	Sep	Oct	Nov	Dec
Infex per use-life	0	0										



Thrombosis Episode - access fistula

	Jan	Feb	Mar	Apr	May	Jun	Jul	Aug	Sep	Oct	Nov	Dec
Current Month		0.02										
Rolling Year-to-date	0.00	0.01	0.01	0.01	0.01	0.00	0.01	0.00	0.00	0.00	0.00	0.00

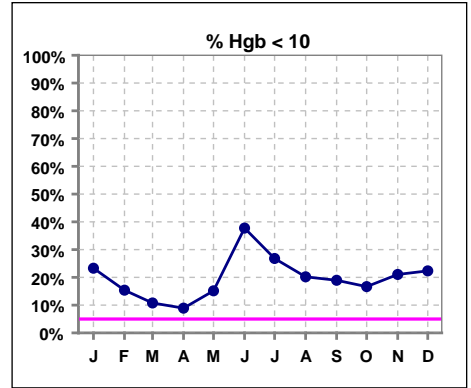
Thrombosis Episode - access graft

	Jan	Feb	Mar	Apr	May	Jun	Jul	Aug	Sep	Oct	Nov	Dec
Current Month						0.04						
Rolling Year-to-date	0.01	0.01	0.01	0.01	0.01	0.01	0.01	0.01	0.01	0.00	0.00	0.00

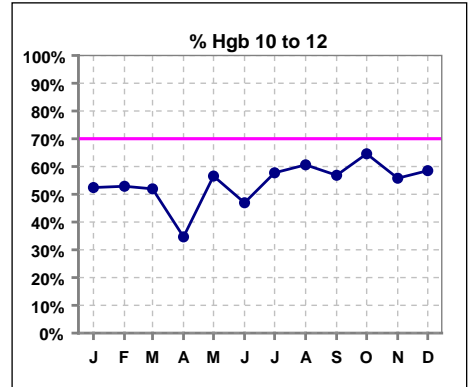
Methodology: a) All labs for 'Adequacy of Dialysis', 'Nutrition', 'Osteodystrophy', 'Anemia' and 'Diabetes' based on last value of month; b) BP's and #L processed are average of all values for month; c) Access data takes last access of month; d) Values for SGA and 'Infection Control' use most recent result.

V. ANEMIA

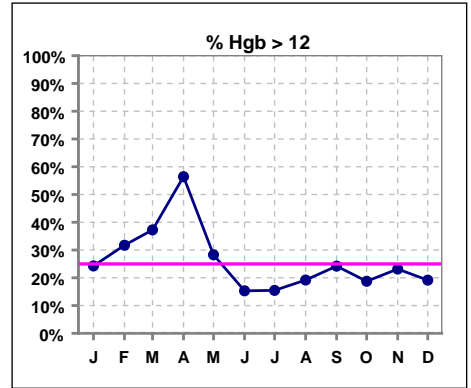
	Jan	Feb	Mar	Apr	May	Jun	Jul	Aug	Sep	Oct	Nov	Dec
# Hgb	103	104	102	101	99	98	97	99	95	96	95	94
# Hgb < 10	24	16	11	9	15	37	26	20	18	16	20	21
Pop. Mean	11.1	11.4	11.7	12.0	11.3	10.6	10.8	11.0	11.2	11.1	10.9	10.9
Std. Deviation	1.4	1.4	1.4	1.4	1.4	1.5	1.3	1.3	1.3	1.3	1.4	1.4
% Hgb < 10	23%	15%	11%	9%	15%	38%	27%	20%	19%	17%	21%	22%



	Jan	Feb	Mar	Apr	May	Jun	Jul	Aug	Sep	Oct	Nov	Dec
# Hgb	103	104	102	101	99	98	97	99	95	96	95	94
# Hgb 10 to 12	54	55	53	35	56	46	56	60	54	62	53	55
Pop. Mean	11.1	11.4	11.7	12.0	11.3	10.6	10.8	11.0	11.2	11.1	10.9	10.9
Std. Deviation	1.4	1.4	1.4	1.4	1.4	1.5	1.3	1.3	1.3	1.3	1.4	1.4
% Hgb 10 to 12	52%	53%	52%	35%	57%	47%	58%	61%	57%	65%	56%	59%

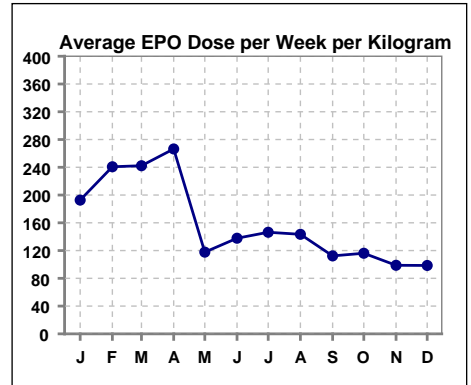


	Jan	Feb	Mar	Apr	May	Jun	Jul	Aug	Sep	Oct	Nov	Dec
# Hgb	103	104	102	101	99	98	97	99	95	96	95	94
# Hgb > 12	25	33	38	57	28	15	15	19	23	18	22	18
Pop. Mean	11.1	11.4	11.7	12.0	11.3	10.6	10.8	11.0	11.2	11.1	10.9	10.9
Std. Deviation	1.4	1.4	1.4	1.4	1.4	1.5	1.3	1.3	1.3	1.3	1.4	1.4
% Hgb > 12	24%	32%	37%	56%	28%	15%	15%	19%	24%	19%	23%	19%



Average EPO Dose per Week per Kilogram

	Jan	Feb	Mar	Apr	May	Jun	Jul	Aug	Sep	Oct	Nov	Dec
# Average EPO	192.7	240.7	242.2	266.4	117.7	137.8	146.4	143.4	112.3	116.1	98.8	98.5

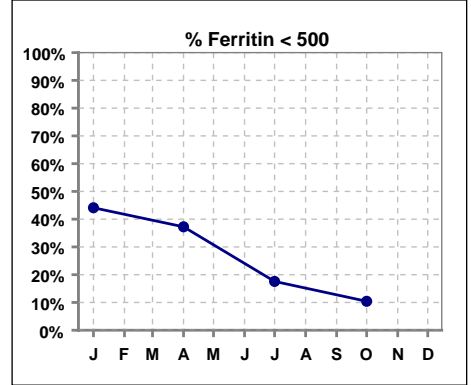


Methodology: a) All labs for 'Adequacy of Dialysis', 'Nutrition', 'Osteodystrophy', 'Anemia' and 'Diabetes' based on last value of month; b) BP's and #L processed are average of all values for month; c) Access data takes last access of month; d) Values for SGA and 'Infection Control' use most recent result.

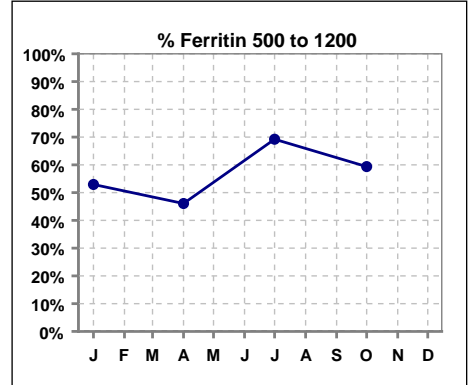
V. ANEMIA - CONT.

Iron Profile

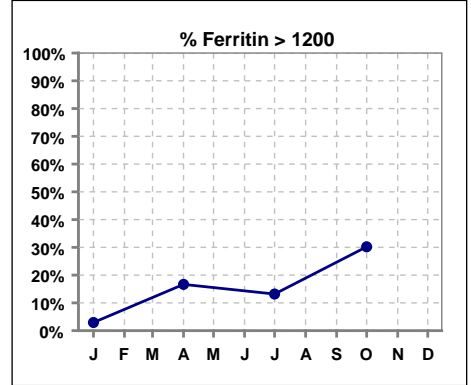
	Jan	Feb	Mar	Apr	May	Jun	Jul	Aug	Sep	Oct	Nov	Dec
# Ferritin	102			102			91			96		
# Ferritin < 500	45			38			16			10		
Pop. Mean	561			760			869			976		
Std. Deviation	341			494			411			446		
% Ferritin < 500	44%			37%			18%			10%		



	Jan	Feb	Mar	Apr	May	Jun	Jul	Aug	Sep	Oct	Nov	Dec
# Ferritin	102			102			91			96		
# Ferritin 500 to 1200	54			47			63			57		
Pop. Mean	561			760			869			976		
Std. Deviation	341			494			411			446		
% Ferritin 500 to 1200	53%			46%			69%			59%		

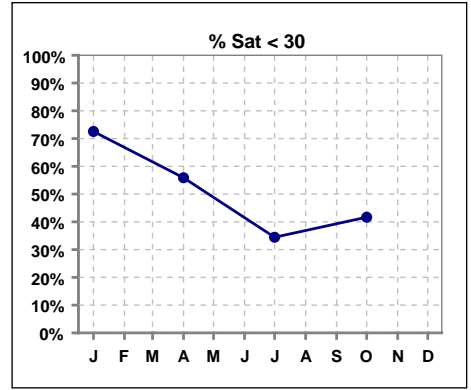


	Jan	Feb	Mar	Apr	May	Jun	Jul	Aug	Sep	Oct	Nov	Dec
# Ferritin	102			102			91			96		
# Ferritin > 1200	3			17			12			29		
Pop. Mean	561			760			869			976		
Std. Deviation	341			494			411			446		
% Ferritin > 1200	3%			17%			13%			30%		

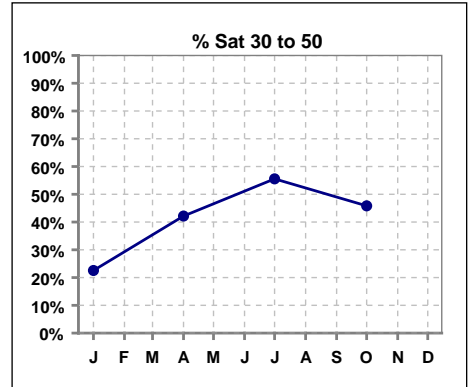


V. ANEMIA - CONT.

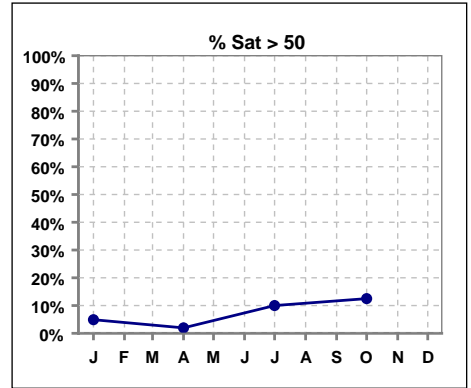
	Jan	Feb	Mar	Apr	May	Jun	Jul	Aug	Sep	Oct	Nov	Dec
# % Sat	102			102			90			96		
# % Sat < 30	74			57			31			40		
Pop. Mean	26			29			34			35		
Std. Deviation	15			11			12			18		
% % Sat < 30	73%			56%			34%			42%		



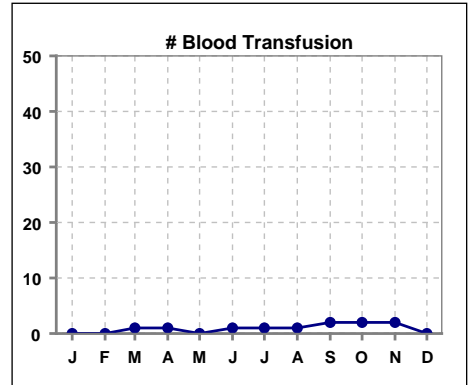
	Jan	Feb	Mar	Apr	May	Jun	Jul	Aug	Sep	Oct	Nov	Dec
# % Sat	102			102			90			96		
# % Sat 30 to 50	23			43			50			44		
Pop. Mean	26			29			34			35		
Std. Deviation	15			11			12			18		
% % Sat 30 to 50	23%			42%			56%			46%		



	Jan	Feb	Mar	Apr	May	Jun	Jul	Aug	Sep	Oct	Nov	Dec
# % Sat	102			102			90			96		
# % Sat > 50	5			2			9			12		
Pop. Mean	26			29			34			35		
Std. Deviation	15			11			12			18		
% % Sat > 50	5%			2%			10%			13%		



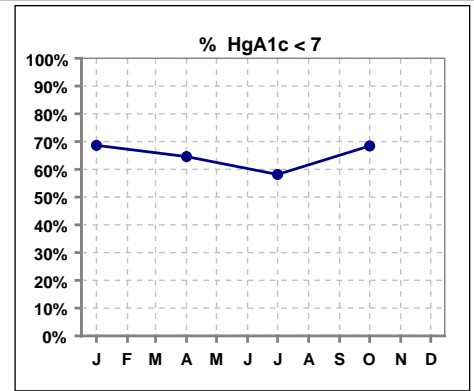
	Jan	Feb	Mar	Apr	May	Jun	Jul	Aug	Sep	Oct	Nov	Dec
# Blood Transfusion	0	0	1	1	0	1	1	1	2	2	2	0



Methodology: a) All labs for 'Adequacy of Dialysis', 'Nutrition', 'Osteodystrophy', 'Anemia' and 'Diabetes' based on last value of month; b) BP's and #L processed are average of all values for month; c) Access data takes last access of month; d) Values for SGA and 'Infection Control' use most recent result.

VI. Diabetes

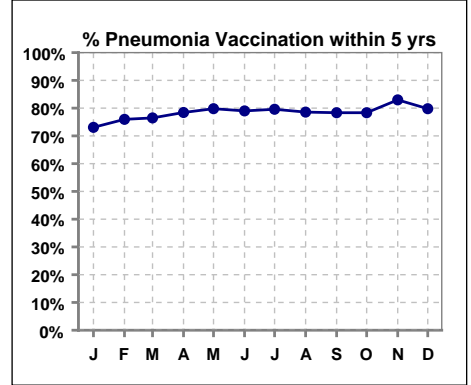
	Jan	Feb	Mar	Apr	May	Jun	Jul	Aug	Sep	Oct	Nov	Dec
# HgA1c	51			48			43			38		
# HgA1c < 7	35			31			25			26		
Pop. Mean	6.6			6.6			6.9			6.7		
Std. Deviation	1.67			1.53			1.83			1.59		
% HgA1c < 7	69%			65%			58%			68%		



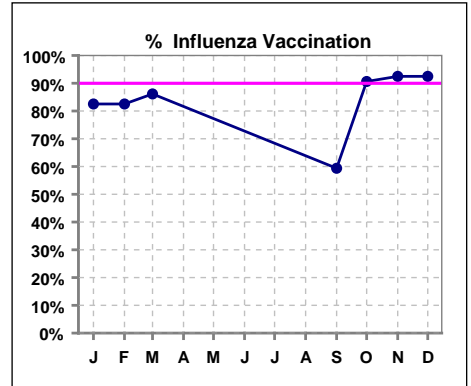
VII. Infection Control

Pneumonia vaccination within the past five years

	Jan	Feb	Mar	Apr	May	Jun	Jul	Aug	Sep	Oct	Nov	Dec
# Patient	104	104	102	102	99	100	98	98	97	97	94	94
# Pneumonia	76	79	78	80	79	79	78	77	76	76	78	75
% Pneumonia	73%	76%	76%	78%	80%	79%	80%	79%	78%	78%	83%	80%



	Jan	Feb	Mar	Apr	May	Jun	Jul	Aug	Sep	Oct	Nov	Dec
# Patient	103	103	101						96	96	93	93
# Influenza	85	85	87						57	87	86	86
% Influenza	83%	83%	86%						59%	91%	92%	92%



Methodology: a) All labs for 'Adequacy of Dialysis', 'Nutrition', 'Osteodystrophy', 'Anemia' and 'Diabetes' based on last value of month; b) BP's and #L processed are average of all values for month; c) Access data takes last access of month; d) Values for SGA and 'Infection Control' use most recent result.