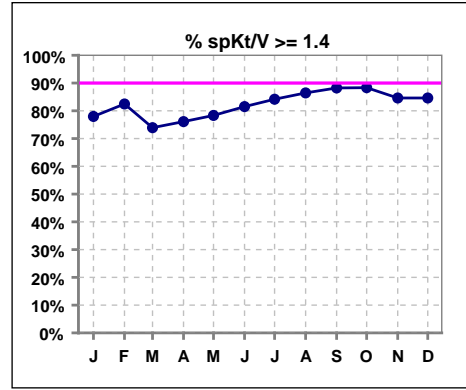
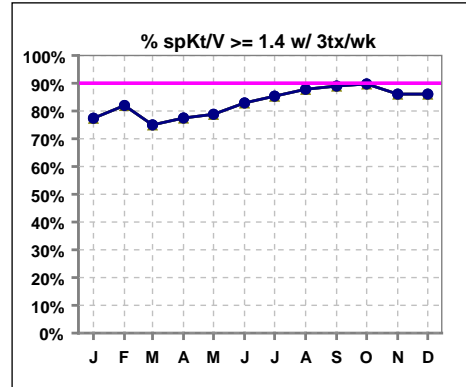


I. ADEQUACY OF DIALYSIS

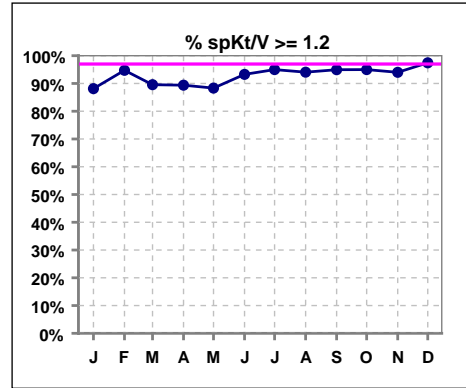
	Jan	Feb	Mar	Apr	May	Jun	Jul	Aug	Sep	Oct	Nov	Dec
# spKt/V	118	114	115	113	120	119	120	118	119	120	117	117
# spKt/V >= 1.4	92	94	85	86	94	97	101	102	105	106	99	99
Pop. Mean	1.58	1.62	1.59	1.58	1.59	1.64	1.68	1.64	1.68	1.67	1.66	1.70
Std. Deviation	0.30	0.28	0.34	0.31	0.33	0.33	0.33	0.31	0.30	0.32	0.28	0.34
% spKt/V >= 1.4	78%	82%	74%	76%	78%	82%	84%	86%	88%	88%	85%	85%



	Jan	Feb	Mar	Apr	May	Jun	Jul	Aug	Sep	Oct	Nov	Dec
# spKt/V w/ 3tx/wk	115	111	112	111	118	117	116	115	118	117	115	115
# spKt/V >= 1.4 w/3tx/wk	89	91	84	86	93	97	99	101	105	105	99	99
Pop. Mean	1.58	1.62	1.60	1.59	1.60	1.65	1.68	1.65	1.69	1.68	1.67	1.71
Std. Deviation	0.30	0.28	0.34	0.30	0.33	0.32	0.32	0.30	0.29	0.30	0.27	0.33
% >= 1.4 w/3tx/wk	77%	82%	75%	77%	79%	83%	85%	88%	89%	90%	86%	86%

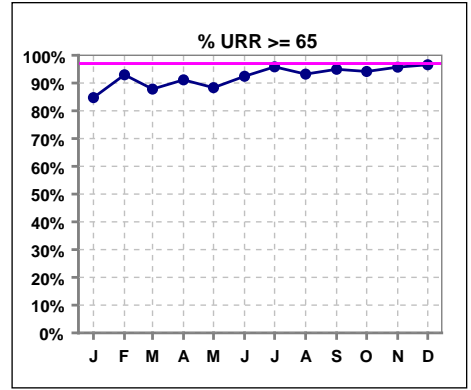


	Jan	Feb	Mar	Apr	May	Jun	Jul	Aug	Sep	Oct	Nov	Dec
# spKt/V	118	114	115	113	120	119	120	118	119	120	117	117
# spKt/V >= 1.2	104	108	103	101	106	111	114	111	113	114	110	114
Pop. Mean	1.58	1.62	1.59	1.58	1.59	1.64	1.68	1.64	1.68	1.67	1.66	1.70
Std. Deviation	0.30	0.28	0.34	0.31	0.33	0.33	0.33	0.31	0.30	0.32	0.28	0.34
% spKt/V >= 1.2	88%	95%	90%	89%	88%	93%	95%	94%	95%	95%	94%	97%

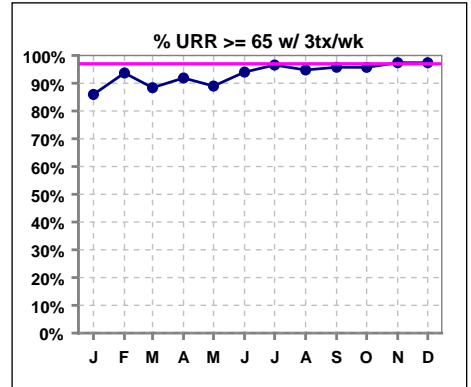


I. ADEQUACY OF DIALYSIS - CONT.

	Jan	Feb	Mar	Apr	May	Jun	Jul	Aug	Sep	Oct	Nov	Dec
# URR	118	114	115	113	120	119	120	118	119	120	117	117
# URR >= 65	100	106	101	103	106	110	115	110	113	113	112	113
Pop. Mean	73	74	74	74	74	75	76	75	76	76	75	76
Std. Deviation	7.17	6.28	7.23	6.67	7.27	6.92	6.76	6.87	5.78	7.18	5.63	5.97
% URR >= 65	85%	93%	88%	91%	88%	92%	96%	93%	95%	94%	96%	97%



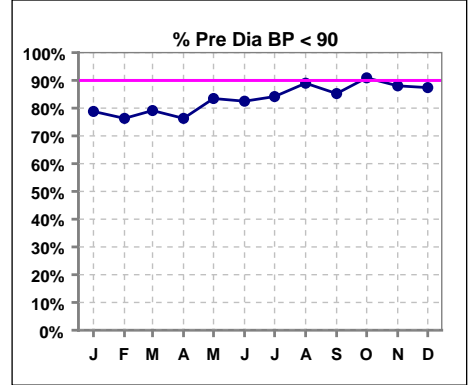
	Jan	Feb	Mar	Apr	May	Jun	Jul	Aug	Sep	Oct	Nov	Dec
# URR w/ 3tx/wk	114	111	112	111	118	117	116	115	118	117	115	115
# URR>=65 w/ 3tx/wk	98	104	99	102	105	110	112	109	113	112	112	112
Pop. Mean	74	75	74	74	74	75	76	75	76	76	76	77
Std. Deviation	7.09	6.20	7.17	6.48	7.05	6.54	6.65	6.68	5.46	6.41	5.36	5.52
% URR>=65 w/ 3tx/wk	86%	94%	88%	92%	89%	94%	97%	95%	96%	96%	97%	97%



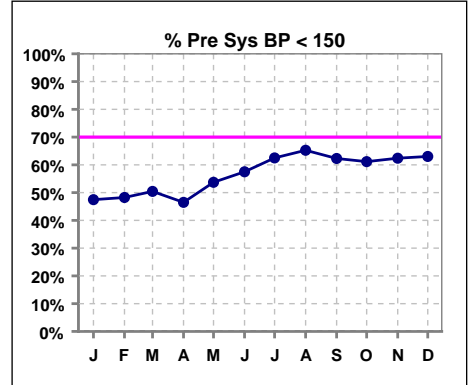
I. ADEQUACY OF DIALYSIS - CONT.

Blood Pressure Control (Pre)

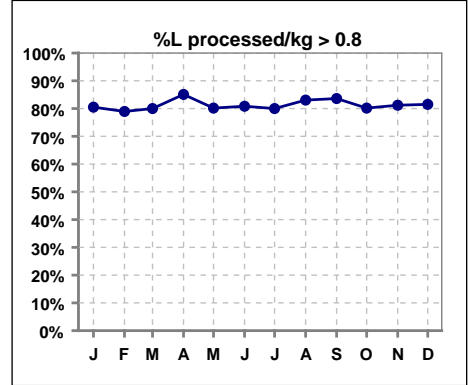
	Jan	Feb	Mar	Apr	May	Jun	Jul	Aug	Sep	Oct	Nov	Dec
# Pre Dia BP	118	114	115	114	121	120	120	118	122	121	117	119
# Pre Dia BP < 90	93	87	91	87	101	99	101	105	104	110	103	104
Pop. Mean	79	79	79	79	77	76	75	74	74	74	74	74
Std. Deviation	14.1	13.6	13.6	14.0	13.7	14.4	14.0	14.3	14.4	13.2	13.8	14.9
% Pre Dia BP < 90	79%	76%	79%	76%	83%	83%	84%	89%	85%	91%	88%	87%



	Jan	Feb	Mar	Apr	May	Jun	Jul	Aug	Sep	Oct	Nov	Dec
# Pre Sys BP	118	114	115	114	121	120	120	118	122	121	117	119
# Pre Sys BP < 150	56	55	58	53	65	69	75	77	76	74	73	75
Pop. Mean	153	153	153	152	148	146	145	143	142	144	144	143
Std. Deviation	22.2	22.2	22.7	23.3	23.8	22.7	22.8	24.0	23.4	22.2	24.2	24.4
%Pre Sys BP <150	47%	48%	50%	46%	54%	58%	63%	65%	62%	61%	62%	63%



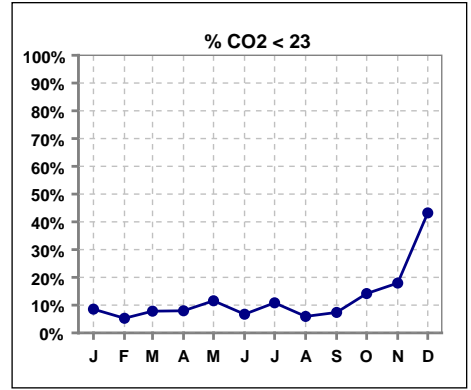
	Jan	Feb	Mar	Apr	May	Jun	Jul	Aug	Sep	Oct	Nov	Dec
# L processed/kg	118	114	115	114	121	120	120	118	122	121	117	119
# L processed/kg>0.8	95	90	92	97	97	97	96	98	102	97	95	97
Pop. Mean	1	1	1	1	1	1	1	1	1	1	1	1
Std. Deviation	0.3	0.3	0.3	0.3	0.3	0.3	0.3	0.2	0.3	0.3	0.3	0.2
% L processed/kg>0.8	81%	79%	80%	85%	80%	81%	80%	83%	84%	80%	81%	82%



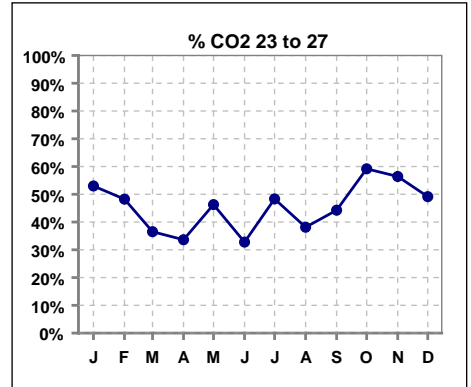
Methodology: a) All labs for 'Adequacy of Dialysis', 'Nutrition', 'Osteodystrophy', 'Anemia' and 'Diabetes' based on last value of month; b) BP's and #L processed are average of all values for month; c) Access data takes last access of month; d) Values for SGA and 'Infection Control' use most recent result.

I. ADEQUACY OF DIALYSIS - CONT.

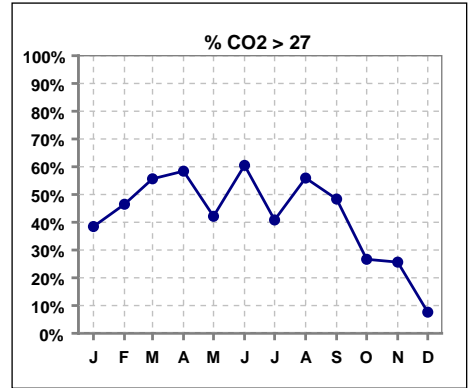
	Jan	Feb	Mar	Apr	May	Jun	Jul	Aug	Sep	Oct	Nov	Dec
# CO2	117	114	115	113	121	119	120	118	122	120	117	118
# CO2 < 23	10	6	9	9	14	8	13	7	9	17	21	51
Pop. Mean	27	27	27	28	26	28	27	27	27	25	25	23
Std. Deviation	2.85	2.73	2.99	3.19	3.55	3.18	3.15	2.96	2.80	3.32	3.05	2.79
% CO2 < 23	9%	5%	8%	8%	12%	7%	11%	6%	7%	14%	18%	43%



	Jan	Feb	Mar	Apr	May	Jun	Jul	Aug	Sep	Oct	Nov	Dec
# CO2	117	114	115	113	121	119	120	118	122	120	117	118
# CO2 23 to 27	62	55	42	38	56	39	58	45	54	71	66	58
Pop. Mean	27	27	27	28	26	28	27	27	27	25	25	23
Std. Deviation	2.85	2.73	2.99	3.19	3.55	3.18	3.15	2.96	2.80	3.32	3.05	2.79
% CO2 23 to 27	53%	48%	37%	34%	46%	33%	48%	38%	44%	59%	56%	49%



	Jan	Feb	Mar	Apr	May	Jun	Jul	Aug	Sep	Oct	Nov	Dec
# CO2	117	114	115	113	121	119	120	118	122	120	117	118
# CO2 > 27	45	53	64	66	51	72	49	66	59	32	30	9
Pop. Mean	27	27	27	28	26	28	27	27	27	25	25	23
Std. Deviation	2.85	2.73	2.99	3.19	3.55	3.18	3.15	2.96	2.80	3.32	3.05	2.79
% CO2 > 27	38%	46%	56%	58%	42%	61%	41%	56%	48%	27%	26%	8%

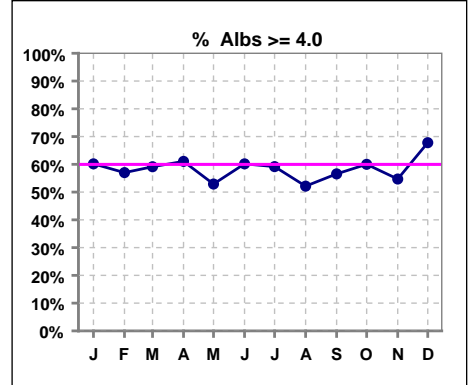


Methodology: a) All labs for 'Adequacy of Dialysis', 'Nutrition', 'Osteodystrophy', 'Anemia' and 'Diabetes' based on last value of month; b) BP's and #L processed are average of all values for month; c) Access data takes last access of month; d) Values for SGA and 'Infection Control' use most recent result.

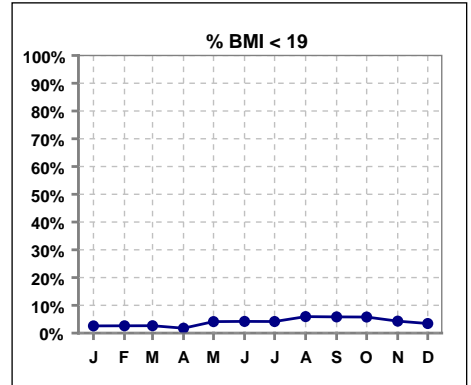
*Albumin values use BCG method - as of July 2001

II. NUTRITION

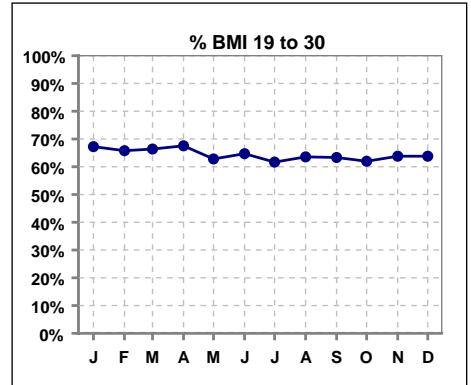
	Jan	Feb	Mar	Apr	May	Jun	Jul	Aug	Sep	Oct	Nov	Dec
# Albumin	118	114	115	113	121	118	120	117	122	120	117	118
# Albumin >= 4.0	71	65	68	69	64	71	71	61	69	72	64	80
Pop. Mean	4.0	4.0	4.0	4.0	3.9	4.0	4.0	3.9	4.0	4.0	4.0	4.0
Std. Deviation	0.37	0.33	0.34	0.36	0.37	0.38	0.36	0.35	0.36	0.34	0.38	0.40
% Alb >= 3.5	90%	95%	91%	91%	90%	91%	90%	92%	92%	93%	91%	92%
% Alb >= 3.0	100%	100%	100%	99%	98%	99%	100%	99%	100%	100%	99%	98%
% Alb >= 4.0	60%	57%	59%	61%	53%	60%	59%	52%	57%	60%	55%	68%



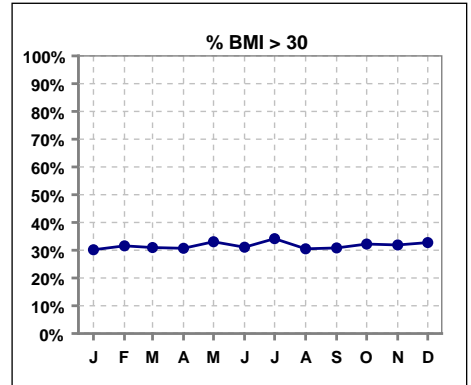
	Jan	Feb	Mar	Apr	May	Jun	Jul	Aug	Sep	Oct	Nov	Dec
# BMI	116	114	113	114	121	119	120	118	120	121	116	116
# BMI < 19	3	3	3	2	5	5	5	7	7	7	5	4
Pop. Mean	28	28	28	28	28	28	28	28	28	28	28	29
Std. Deviation	7.1	7.0	7.2	7.1	7.2	6.8	7.3	6.8	7.3	7.2	7.3	7.2
% BMI < 19	3%	3%	3%	2%	4%	4%	4%	6%	6%	6%	4%	3%



	Jan	Feb	Mar	Apr	May	Jun	Jul	Aug	Sep	Oct	Nov	Dec
# BMI	116	114	113	114	121	119	120	118	120	121	116	116
# BMI 19 to 30	78	75	75	77	76	77	74	75	76	75	74	74
Pop. Mean	28	28	28	28	28	28	28	28	28	28	28	29
Std. Deviation	7.1	7.0	7.2	7.1	7.2	6.8	7.3	6.8	7.3	7.2	7.3	7.2
% BMI 19 to 30	67%	66%	66%	68%	63%	65%	62%	64%	63%	62%	64%	64%



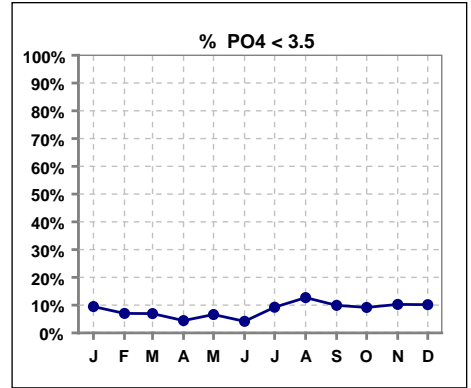
	Jan	Feb	Mar	Apr	May	Jun	Jul	Aug	Sep	Oct	Nov	Dec
# BMI	116	114	113	114	121	119	120	118	120	121	116	116
# BMI > 30	35	36	35	35	40	37	41	36	37	39	37	38
Pop. Mean	28	28	28	28	28	28	28	28	28	28	28	29
Std. Deviation	7.1	7.0	7.2	7.1	7.2	6.8	7.3	6.8	7.3	7.2	7.3	7.2
% BMI > 30	30%	32%	31%	31%	33%	31%	34%	31%	31%	32%	32%	33%



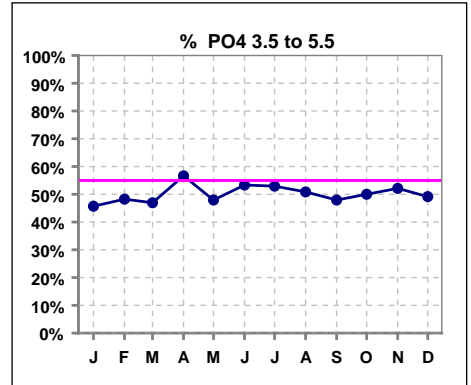
Methodology: a) All labs for 'Adequacy of Dialysis', 'Nutrition', 'Osteodystrophy', 'Anemia' and 'Diabetes' based on last value of month; b) BP's and #L processed are average of all values for month; c) Access data takes last access of month; d) Values for SGA and 'Infection Control' use most recent result.

III. OSTEODYSTROPHY

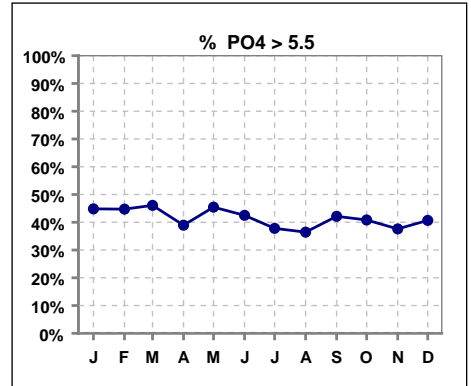
	Jan	Feb	Mar	Apr	May	Jun	Jul	Aug	Sep	Oct	Nov	Dec
# PO4	116	114	115	113	121	120	119	118	121	120	117	118
# PO4 < 3.5	11	8	8	5	8	5	11	15	12	11	12	12
Pop. Mean	5.5	5.4	5.6	5.4	5.5	5.5	5.2	5.1	5.3	5.4	5.3	5.2
Std. Deviation	1.57	1.42	1.59	1.46	1.54	1.49	1.43	1.43	1.46	1.61	1.60	1.48
% PO4 < 3.5	9%	7%	7%	4%	7%	4%	9%	13%	10%	9%	10%	10%



	Jan	Feb	Mar	Apr	May	Jun	Jul	Aug	Sep	Oct	Nov	Dec
# PO4	116	114	115	113	121	120	119	118	121	120	117	118
# PO4 3.5 to 5.5	53	55	54	64	58	64	63	60	58	60	61	58
Pop. Mean	5.5	5.4	5.6	5.4	5.5	5.5	5.2	5.1	5.3	5.4	5.3	5.2
Std. Deviation	1.57	1.42	1.59	1.46	1.54	1.49	1.43	1.43	1.46	1.61	1.60	1.48
% PO4 3.5 to 5.5	46%	48%	47%	57%	48%	53%	53%	51%	48%	50%	52%	49%

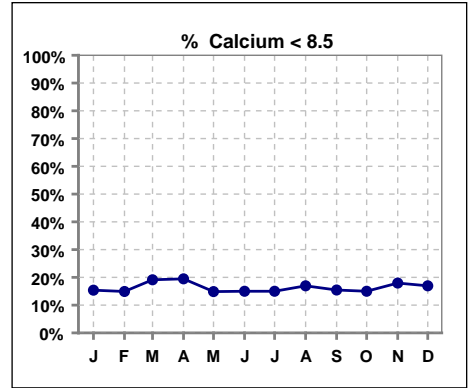


	Jan	Feb	Mar	Apr	May	Jun	Jul	Aug	Sep	Oct	Nov	Dec
# PO4	116	114	115	113	121	120	119	118	121	120	117	118
# PO4 > 5.5	52	51	53	44	55	51	45	43	51	49	44	48
Pop. Mean	5.5	5.4	5.6	5.4	5.5	5.5	5.2	5.1	5.3	5.4	5.3	5.2
Std. Deviation	1.57	1.42	1.59	1.46	1.54	1.49	1.43	1.43	1.46	1.61	1.60	1.48
% PO4 > 5.5	45%	45%	46%	39%	45%	43%	38%	36%	42%	41%	38%	41%

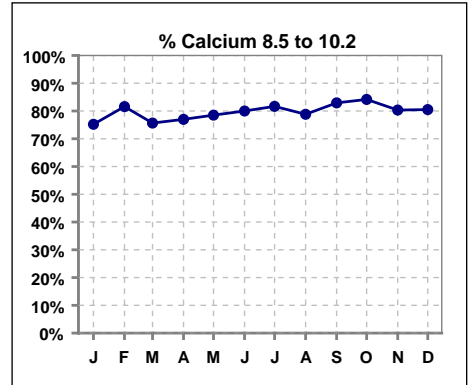


III. OSTEODYSTROPHY - CONT.

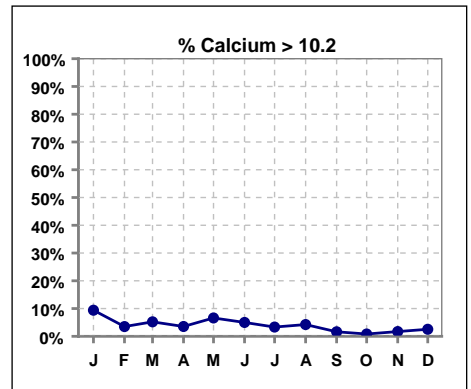
	Jan	Feb	Mar	Apr	May	Jun	Jul	Aug	Sep	Oct	Nov	Dec
# Calcium	117	114	115	113	121	120	120	118	123	120	117	118
# Calcium < 8.5	18	17	22	22	18	18	18	20	19	18	21	20
Pop. Mean	9.3	9.1	9.1	9.0	9.2	9.2	9.2	9.1	9.1	9.0	9.1	9.1
Std. Deviation	0.94	0.79	0.83	0.87	0.81	0.78	0.92	0.79	0.73	0.66	0.79	0.82
% Calcium < 8.5	15%	15%	19%	19%	15%	15%	15%	17%	15%	15%	18%	17%



	Jan	Feb	Mar	Apr	May	Jun	Jul	Aug	Sep	Oct	Nov	Dec
# Calcium	117	114	115	113	121	120	120	118	123	120	117	118
# Calcium 8.5 to 10.2	88	93	87	87	95	96	98	93	102	101	94	95
Pop. Mean	9.3	9.1	9.1	9.0	9.2	9.2	9.2	9.1	9.1	9.0	9.1	9.1
Std. Deviation	0.94	0.79	0.83	0.87	0.81	0.78	0.92	0.79	0.73	0.66	0.79	0.82
% Calcium 8.5 to 10.2	75%	82%	76%	77%	79%	80%	82%	79%	83%	84%	80%	81%



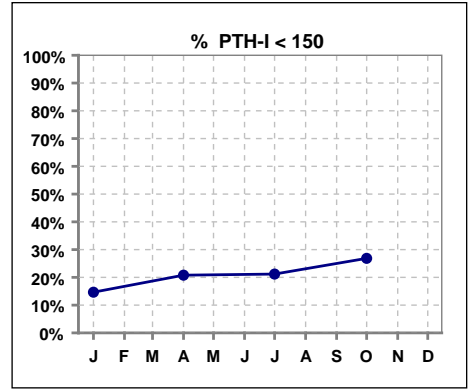
	Jan	Feb	Mar	Apr	May	Jun	Jul	Aug	Sep	Oct	Nov	Dec
# Calcium	117	114	115	113	121	120	120	118	123	120	117	118
# Calcium > 10.2	11	4	6	4	8	6	4	5	2	1	2	3
Pop. Mean	9.3	9.1	9.1	9.0	9.2	9.2	9.2	9.1	9.1	9.0	9.1	9.1
Std. Deviation	0.94	0.79	0.83	0.87	0.81	0.78	0.92	0.79	0.73	0.66	0.79	0.82
% Calcium > 10.2	9%	4%	5%	4%	7%	5%	3%	4%	2%	1%	2%	3%



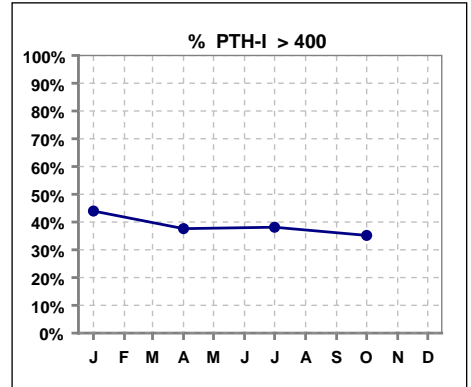
Methodology: a) All labs for 'Adequacy of Dialysis', 'Nutrition', 'Osteodystrophy', 'Anemia' and 'Diabetes' based on last value of month; b) BP's and #L processed are average of all values for month; c) Access data takes last access of month; d) Values for SGA and 'Infection Control' use most recent result.

III. OSTEODYSTROPHY - CONT.

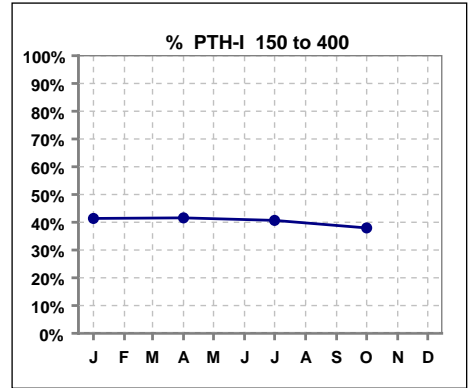
	Jan	Feb	Mar	Apr	May	Jun	Jul	Aug	Sep	Oct	Nov	Dec
# PTH-I	116			101			118			108		
# PTH-I < 150	17			21			25			29		
Pop. Mean	433			451			379			382		
Std. Deviation	314			410			280			329		
% PTH-I < 150	15%			21%			21%			27%		



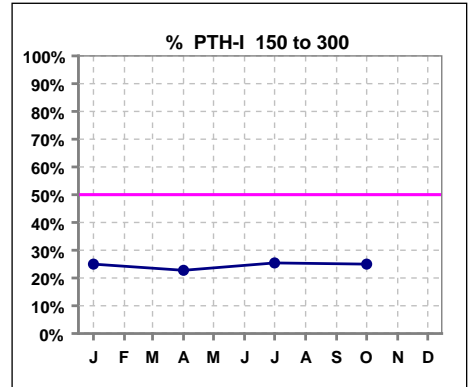
	Jan	Feb	Mar	Apr	May	Jun	Jul	Aug	Sep	Oct	Nov	Dec
# PTH-I	116			101			118			108		
# PTH-I > 400	51			38			45			38		
Pop. Mean	433			451			379			382		
Std. Deviation	314			410			280			329		
% PTH-I > 400	44%			38%			38%			35%		



	Jan	Feb	Mar	Apr	May	Jun	Jul	Aug	Sep	Oct	Nov	Dec
# PTH-I	116			101			118			108		
# PTH-I 150 to 400	48			42			48			41		
Pop. Mean	433			451			379			382		
Std. Deviation	314			410			280			329		
% PTH-I 150 to 400	41%			42%			41%			38%		



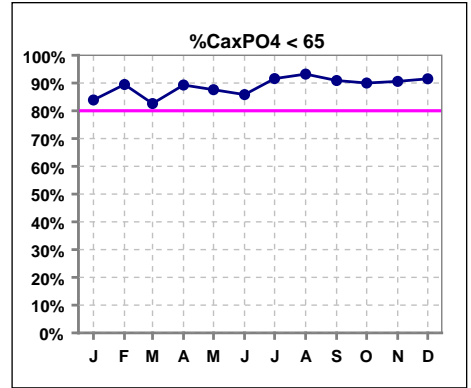
	Jan	Feb	Mar	Apr	May	Jun	Jul	Aug	Sep	Oct	Nov	Dec
# PTH-I	116			101			118			108		
# PTH-I 150 to 300	29			23			30			27		
Pop. Mean	433			451			379			382		
Std. Deviation	314			410			280			329		
% PTH-I 150 to 300	25%			23%			25%			25%		



Methodology: a) All labs for 'Adequacy of Dialysis', 'Nutrition', 'Osteodystrophy', 'Anemia' and 'Diabetes' based on last value of month; b) BP's and #L processed are average of all values for month; c) Access data takes last access of month; d) Values for SGA and 'Infection Control' use most recent result.

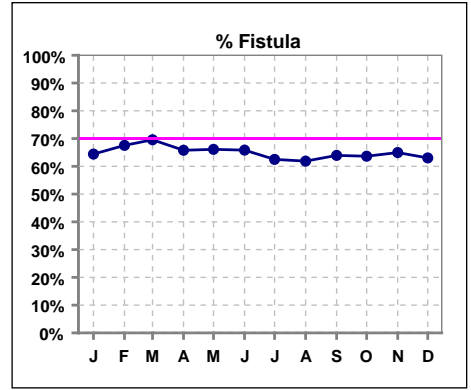
III. OSTEODYSTROPHY - CONT.

	Jan	Feb	Mar	Apr	May	Jun	Jul	Aug	Sep	Oct	Nov	Dec
# Ca x PO4	118	114	115	112	121	120	119	118	121	120	117	118
# Ca x PO4 < 65	99	102	95	100	106	103	109	110	110	108	106	108
Pop. Mean	50.7	48.8	50.8	48.7	50.8	49.7	47.4	46.2	48.3	49.0	47.4	47.4
Std. Deviation	14.4	13.2	15.3	12.2	14.4	13.6	13.2	13.1	13.9	14.3	14.6	13.9
% Ca x PO4 < 65	84%	89%	83%	89%	88%	86%	92%	93%	91%	90%	91%	92%

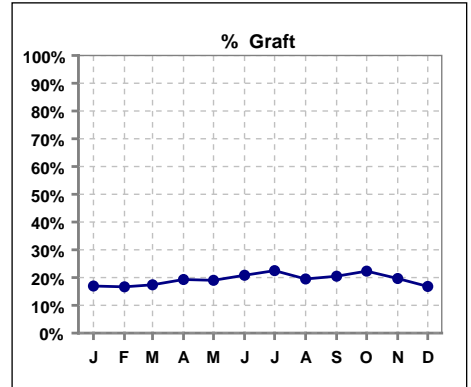


IV. ACCESS

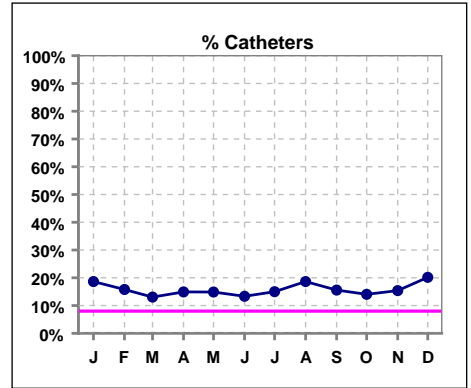
	Jan	Feb	Mar	Apr	May	Jun	Jul	Aug	Sep	Oct	Nov	Dec
# Access	118	114	115	114	121	120	120	118	122	121	117	119
# Fistula	76	77	80	75	80	79	75	73	78	77	76	75
% Fistula	64%	68%	70%	66%	66%	66%	63%	62%	64%	64%	65%	63%



	Jan	Feb	Mar	Apr	May	Jun	Jul	Aug	Sep	Oct	Nov	Dec
# Access	118	114	115	114	121	120	120	118	122	121	117	119
# Graft	20	19	20	22	23	25	27	23	25	27	23	20
% Graft	17%	17%	17%	19%	19%	21%	23%	19%	20%	22%	20%	17%



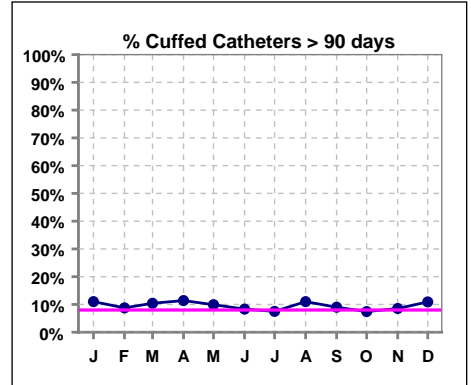
	Jan	Feb	Mar	Apr	May	Jun	Jul	Aug	Sep	Oct	Nov	Dec
# Access	118	114	115	114	121	120	120	118	122	121	117	119
# Catheters	22	18	15	17	18	16	18	22	19	17	18	24
% Catheters	19%	16%	13%	15%	15%	13%	15%	19%	16%	14%	15%	20%



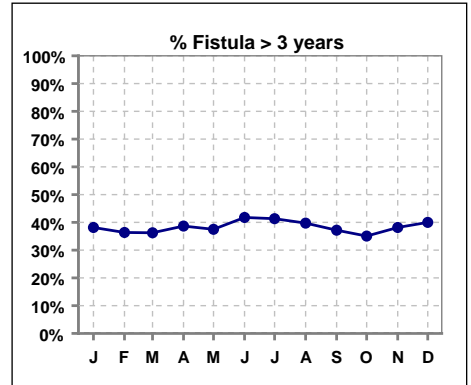
IV. ACCESS - CONT.

Cuffed Catheters > 90 days

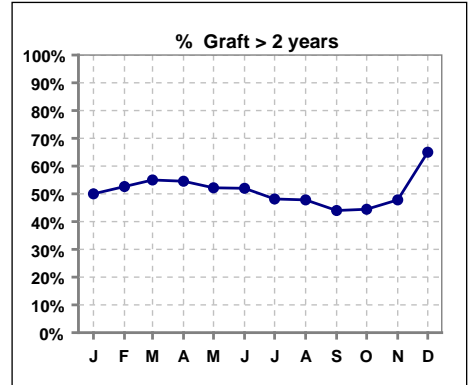
	Jan	Feb	Mar	Apr	May	Jun	Jul	Aug	Sep	Oct	Nov	Dec
# Access	118	114	115	114	121	120	120	118	122	121	117	119
# Cuffed Catheters	13	10	12	13	12	10	9	13	11	9	10	13
% Cuffed Catheters	11%	9%	10%	11%	10%	8%	8%	11%	9%	7%	9%	11%



	Jan	Feb	Mar	Apr	May	Jun	Jul	Aug	Sep	Oct	Nov	Dec
# Fistula	76	77	80	75	80	79	75	73	78	77	76	75
# Fistula > 3 yrs	29	28	29	29	30	33	31	29	29	27	29	30
% Fistula > 3 yrs	38%	36%	36%	39%	38%	42%	41%	40%	37%	35%	38%	40%



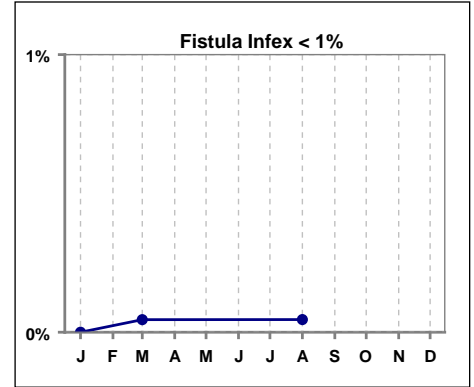
	Jan	Feb	Mar	Apr	May	Jun	Jul	Aug	Sep	Oct	Nov	Dec
# Graft	20	19	20	22	23	25	27	23	25	27	23	20
# Graft > 2 yrs	10	10	11	12	12	13	13	11	11	12	11	13
% Graft > 2 yrs	50%	53%	55%	55%	52%	52%	48%	48%	44%	44%	48%	65%



IV. ACCESS - CONT.

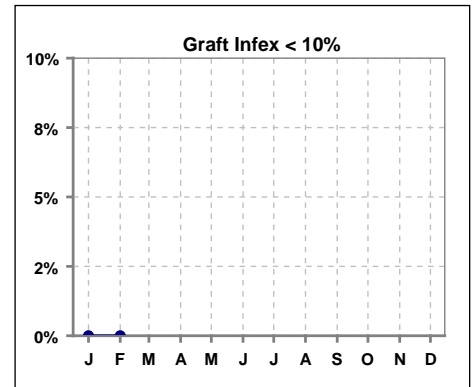
Infection per use-life of access fistula

	Jan	Feb	Mar	Apr	May	Jun	Jul	Aug	Sep	Oct	Nov	Dec
Infex per use-life	0	0.0453						0.0456				



Infection per use-life of access graft

	Jan	Feb	Mar	Apr	May	Jun	Jul	Aug	Sep	Oct	Nov	Dec
Infex per use-life	0	0										



Thrombosis Episode - access fistula

	Jan	Feb	Mar	Apr	May	Jun	Jul	Aug	Sep	Oct	Nov	Dec
Current Month								0.01				
Rolling Year-to-date								0.00	0.00	0.00	0.00	0.00

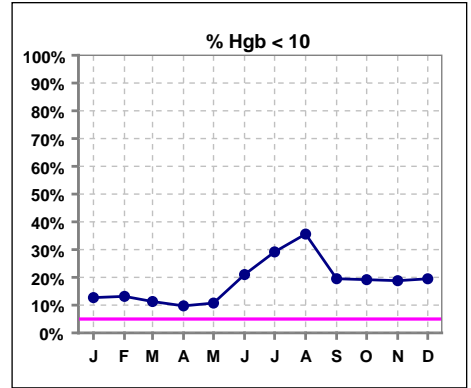
Thrombosis Episode - access graft

	Jan	Feb	Mar	Apr	May	Jun	Jul	Aug	Sep	Oct	Nov	Dec
Current Month												
Rolling Year-to-date	0.01	0.01	0.01	0.01	0.01	0.01	0.00	0.00	0.00	0.01	0.00	0.00

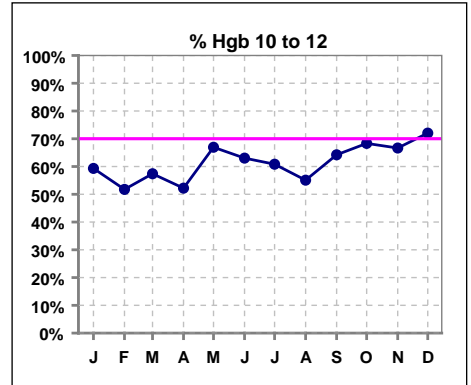
Methodology: a) All labs for 'Adequacy of Dialysis', 'Nutrition', 'Osteodystrophy', 'Anemia' and 'Diabetes' based on last value of month; b) BP's and #L processed are average of all values for month; c) Access data takes last access of month; d) Values for SGA and 'Infection Control' use most recent result.

V. ANEMIA

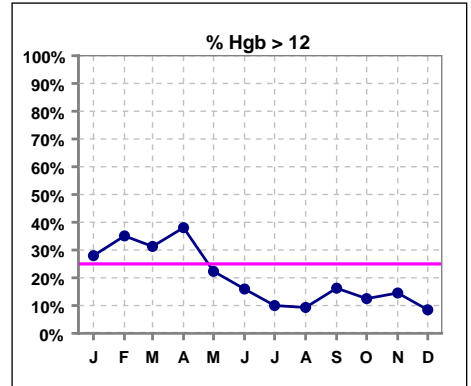
	Jan	Feb	Mar	Apr	May	Jun	Jul	Aug	Sep	Oct	Nov	Dec
# Hgb	118	114	115	113	121	119	120	118	123	120	117	118
# Hgb < 10	15	15	13	11	13	25	35	42	24	23	22	23
Pop. Mean	11.4	11.5	11.5	11.7	11.3	10.8	10.5	10.4	10.9	10.9	10.8	10.6
Std. Deviation	1.3	1.4	1.4	1.5	1.2	1.2	1.3	1.4	1.2	1.2	1.2	1.2
% Hgb < 10	13%	13%	11%	10%	11%	21%	29%	36%	20%	19%	19%	19%



	Jan	Feb	Mar	Apr	May	Jun	Jul	Aug	Sep	Oct	Nov	Dec
# Hgb	118	114	115	113	121	119	120	118	123	120	117	118
# Hgb 10 to 12	70	59	66	59	81	75	73	65	79	82	78	85
Pop. Mean	11.4	11.5	11.5	11.7	11.3	10.8	10.5	10.4	10.9	10.9	10.8	10.6
Std. Deviation	1.3	1.4	1.4	1.5	1.2	1.2	1.3	1.4	1.2	1.2	1.2	1.2
% Hgb 10 to 12	59%	52%	57%	52%	67%	63%	61%	55%	64%	68%	67%	72%

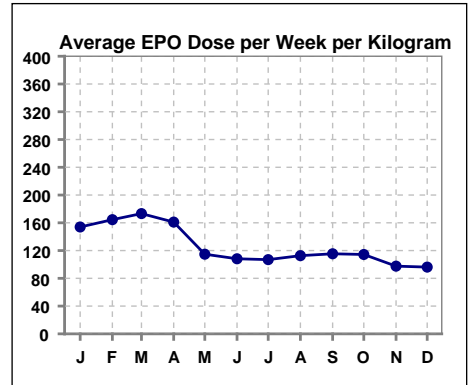


	Jan	Feb	Mar	Apr	May	Jun	Jul	Aug	Sep	Oct	Nov	Dec
# Hgb	118	114	115	113	121	119	120	118	123	120	117	118
# Hgb > 12	33	40	36	43	27	19	12	11	20	15	17	10
Pop. Mean	11.4	11.5	11.5	11.7	11.3	10.8	10.5	10.4	10.9	10.9	10.8	10.6
Std. Deviation	1.3	1.4	1.4	1.5	1.2	1.2	1.3	1.4	1.2	1.2	1.2	1.2
% Hgb > 12	28%	35%	31%	38%	22%	16%	10%	9%	16%	13%	15%	8%



Average EPO Dose per Week per Kilogram

	Jan	Feb	Mar	Apr	May	Jun	Jul	Aug	Sep	Oct	Nov	Dec
# Average EPO	154.0	164.5	173.3	161.0	114.8	108.2	106.9	112.6	115.4	114.4	97.6	96.2

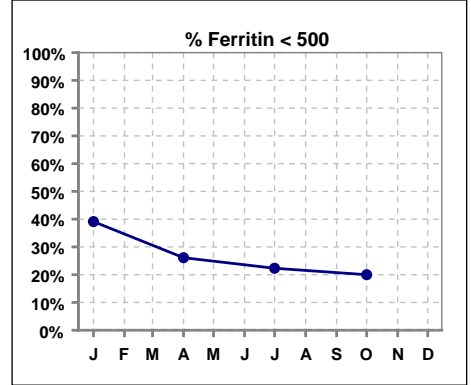


Methodology: a) All labs for 'Adequacy of Dialysis', 'Nutrition', 'Osteodystrophy', 'Anemia' and 'Diabetes' based on last value of month; b) BP's and #L processed are average of all values for month; c) Access data takes last access of month; d) Values for SGA and 'Infection Control' use most recent result.

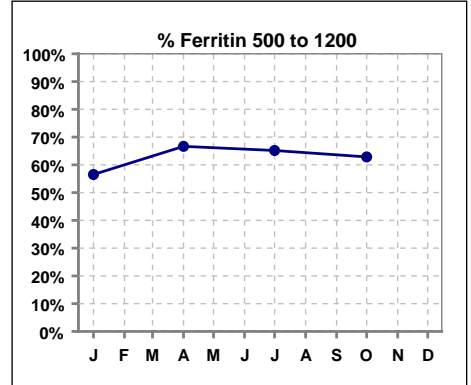
V. ANEMIA - CONT.

Iron Profile

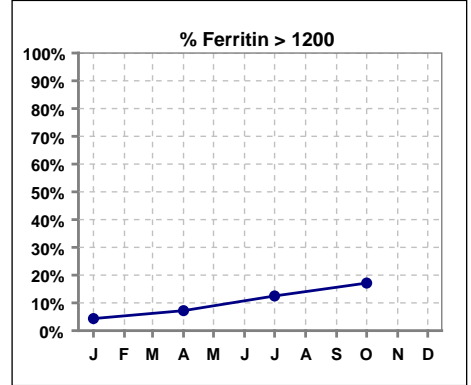
	Jan	Feb	Mar	Apr	May	Jun	Jul	Aug	Sep	Oct	Nov	Dec
# Ferritin	115			111			112			105		
# Ferritin < 500	45			29			25			21		
Pop. Mean	618			710			806			849		
Std. Deviation	297			339			348			452		
% Ferritin < 500	39%			26%			22%			20%		



	Jan	Feb	Mar	Apr	May	Jun	Jul	Aug	Sep	Oct	Nov	Dec
# Ferritin	115			111			112			105		
# Ferritin 500 to 1200	65			74			73			66		
Pop. Mean	618			710			806			849		
Std. Deviation	297			339			348			452		
% Ferritin 500 to 1200	57%			67%			65%			63%		

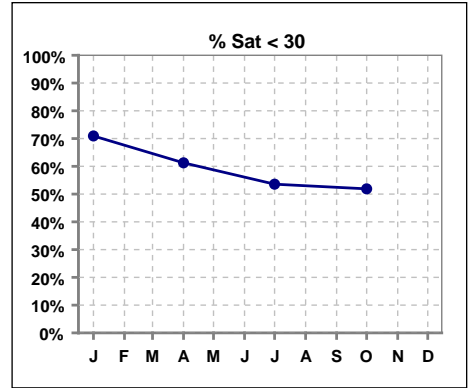


	Jan	Feb	Mar	Apr	May	Jun	Jul	Aug	Sep	Oct	Nov	Dec
# Ferritin	115			111			112			105		
# Ferritin > 1200	5			8			14			18		
Pop. Mean	618			710			806			849		
Std. Deviation	297			339			348			452		
% Ferritin > 1200	4%			7%			13%			17%		

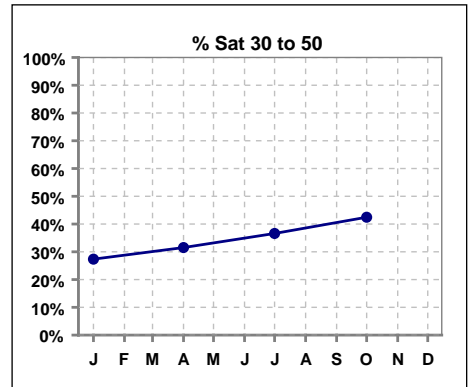


V. ANEMIA - CONT.

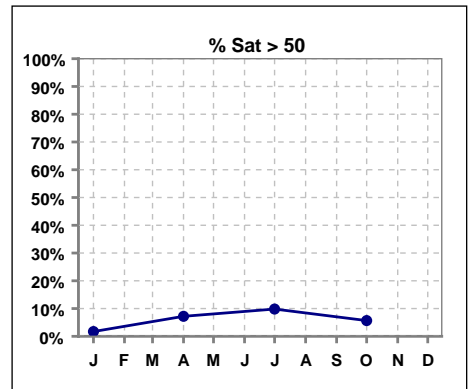
	Jan	Feb	Mar	Apr	May	Jun	Jul	Aug	Sep	Oct	Nov	Dec
# % Sat	117			111			112			106		
# % Sat < 30	83			68			60			55		
Pop. Mean	26			28			32			30		
Std. Deviation	11			13			16			12		
% % Sat < 30	71%			61%			54%			52%		



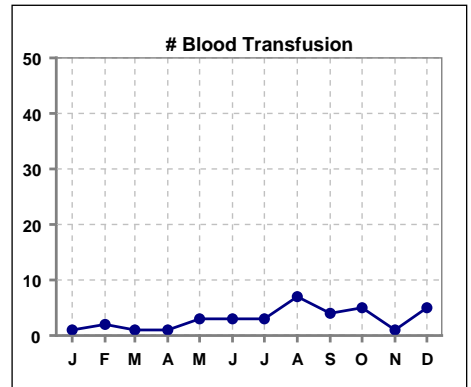
	Jan	Feb	Mar	Apr	May	Jun	Jul	Aug	Sep	Oct	Nov	Dec
# % Sat	117			111			112			106		
# % Sat 30 to 50	32			35			41			45		
Pop. Mean	26			28			32			30		
Std. Deviation	11			13			16			12		
% % Sat 30 to 50	27%			32%			37%			42%		



	Jan	Feb	Mar	Apr	May	Jun	Jul	Aug	Sep	Oct	Nov	Dec
# % Sat	117			111			112			106		
# % Sat > 50	2			8			11			6		
Pop. Mean	26			28			32			30		
Std. Deviation	11			13			16			12		
% % Sat > 50	2%			7%			10%			6%		



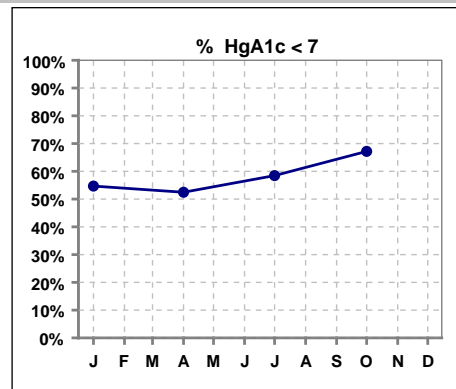
	Jan	Feb	Mar	Apr	May	Jun	Jul	Aug	Sep	Oct	Nov	Dec
# Blood Transfusion	1	2	1	1	3	3	3	7	4	5	1	5



Methodology: a) All labs for 'Adequacy of Dialysis', 'Nutrition', 'Osteodystrophy', 'Anemia' and 'Diabetes' based on last value of month; b) BP's and #L processed are average of all values for month; c) Access data takes last access of month; d) Values for SGA and 'Infection Control' use most recent result.

VI. Diabetes

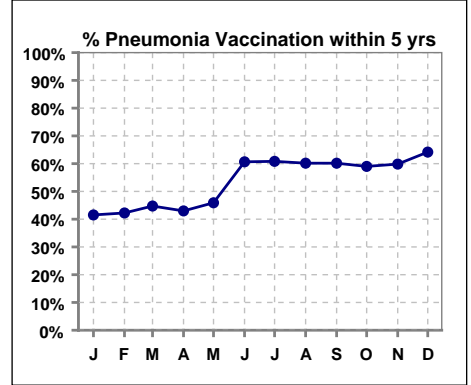
	Jan	Feb	Mar	Apr	May	Jun	Jul	Aug	Sep	Oct	Nov	Dec
# HgA1c	64			61			65			64		
# HgA1c < 7	35			32			38			43		
Pop. Mean	7.1			7.0			7.2			6.8		
Std. Deviation	1.89			1.63			1.78			1.33		
% HgA1c < 7	55%			52%			58%			67%		



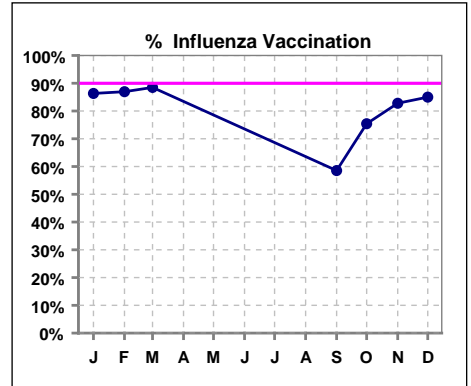
VII. Infection Control

Pneumonia vaccination within the past five years

	Jan	Feb	Mar	Apr	May	Jun	Jul	Aug	Sep	Oct	Nov	Dec
# Patient	118	116	114	114	122	122	120	118	123	122	122	120
# Pneumonia	49	49	51	49	56	74	73	71	74	72	73	77
% Pneumonia	42%	42%	45%	43%	46%	61%	61%	60%	60%	59%	60%	64%



	Jan	Feb	Mar	Apr	May	Jun	Jul	Aug	Sep	Oct	Nov	Dec
# Patient	117	115	113						123	122	122	120
# Influenza	101	100	100						72	92	101	102
% Influenza	86%	87%	88%						59%	75%	83%	85%



Methodology: a) All labs for 'Adequacy of Dialysis', 'Nutrition', 'Osteodystrophy', 'Anemia' and 'Diabetes' based on last value of month; b) BP's and #L processed are average of all values for month; c) Access data takes last access of month; d) Values for SGA and 'Infection Control' use most recent result.