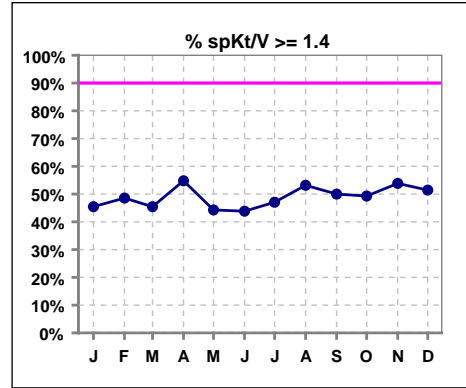
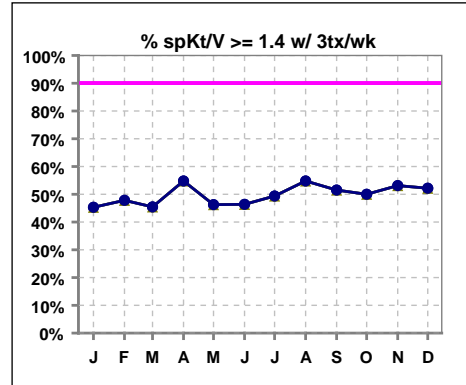


I. ADEQUACY OF DIALYSIS

	Jan	Feb	Mar	Apr	May	Jun	Jul	Aug	Sep	Oct	Nov	Dec
# spKt/V	66	70	77	73	70	73	85	79	74	71	65	70
# spKt/V >= 1.4	30	34	35	40	31	32	40	42	37	35	35	36
Pop. Mean	1.40	1.42	1.36	1.48	1.40	1.37	1.41	1.45	1.40	1.39	1.44	1.39
Std. Deviation	0.58	0.45	0.38	0.49	0.39	0.34	0.40	0.39	0.37	0.32	0.41	0.32
% spKt/V >= 1.4	45%	49%	45%	55%	44%	44%	47%	53%	50%	49%	54%	51%
% spKt/V >= 1.2	55%	71%	68%	73%	60%	66%	76%	80%	74%	79%	83%	77%

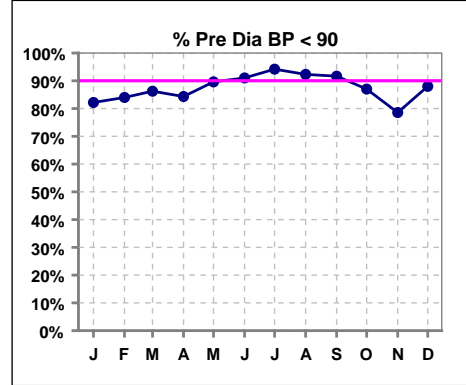


	Jan	Feb	Mar	Apr	May	Jun	Jul	Aug	Sep	Oct	Nov	Dec
# spKt/V w/ 3tx/wk	64	69	77	73	67	69	79	73	66	66	64	69
# spKt/V >= 1.4 w/3tx/wk	29	33	35	40	31	32	39	40	34	33	34	36
Pop. Mean	1.40	1.42	1.36	1.48	1.41	1.39	1.42	1.47	1.42	1.42	1.43	1.40
Std. Deviation	0.59	0.45	0.38	0.49	0.39	0.33	0.40	0.35	0.34	0.28	0.42	0.32
% spKt/V >= 1.4 w/3tx/wk	45%	48%	45%	55%	46%	46%	49%	55%	52%	50%	53%	52%

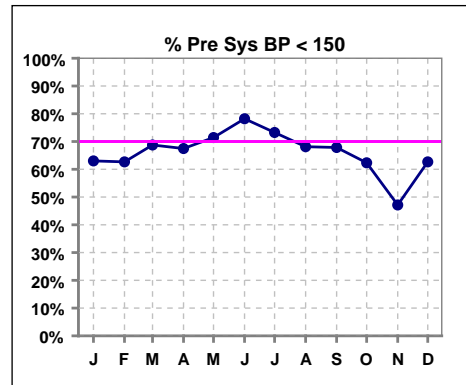


Blood Pressure Control (Pre)

	Jan	Feb	Mar	Apr	May	Jun	Jul	Aug	Sep	Oct	Nov	Dec
# Pre Dia BP	73	75	80	83	77	78	86	91	84	77	70	75
# Pre Dia BP < 90	60	63	69	70	69	71	81	84	77	67	55	66
Pop. Mean	76	75	75	75	72	70	72	74	72	76	78	76
Std. Deviation	14.0	13.6	13.6	13.4	11.7	12.2	12.7	11.0	11.7	12.8	13.7	15.0
% Pre Dia BP < 90	82%	84%	86%	84%	90%	91%	94%	92%	92%	87%	79%	88%



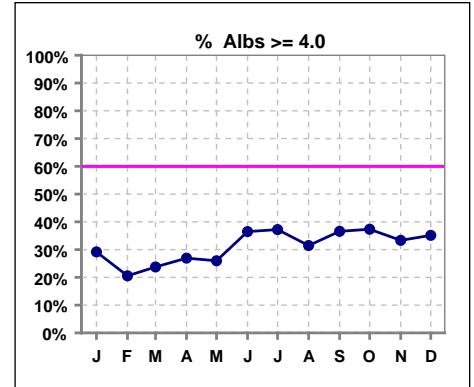
	Jan	Feb	Mar	Apr	May	Jun	Jul	Aug	Sep	Oct	Nov	Dec
# Pre Sys BP	73	75	80	83	77	78	86	91	84	77	70	75
# Pre Sys BP < 150	46	47	55	56	55	61	63	62	57	48	33	47
Pop. Mean	143	142	142	141	137	135	138	141	141	144	150	141
Std. Deviation	22.6	18.9	20.0	22.9	20.3	21.5	20.6	18.1	21.2	22.6	24.5	23.9
% Pre Sys BP < 150	63%	63%	69%	67%	71%	78%	73%	68%	68%	62%	47%	63%



*Albumin values use BCG method - as of July 2001

II. NUTRITION

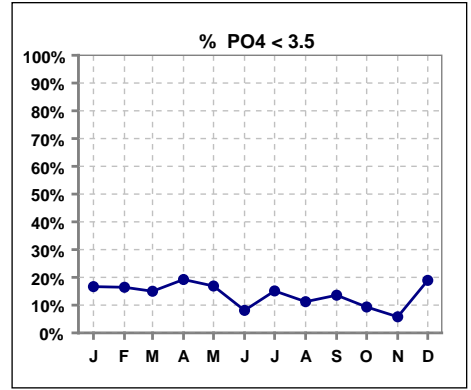
	Jan	Feb	Mar	Apr	May	Jun	Jul	Aug	Sep	Oct	Nov	Dec
# Albumin	72	73	80	78	77	74	86	89	82	75	69	74
# Albumin >= 4.0	21	15	19	21	20	27	32	28	30	28	23	26
Pop. Mean	3.6	3.6	3.6	3.7	3.6	3.8	3.7	3.7	3.7	3.7	3.7	3.7
Std. Deviation	0.44	0.51	0.51	0.49	0.48	0.42	0.48	0.49	0.50	0.50	0.53	0.51
% Alb >= 3.5	69%	68%	66%	76%	69%	84%	70%	70%	74%	75%	74%	72%
% Alb >= 3.0	93%	92%	89%	90%	92%	95%	95%	92%	89%	91%	90%	89%
% Alb >= 4.0	29%	21%	24%	27%	26%	36%	37%	31%	37%	37%	33%	35%



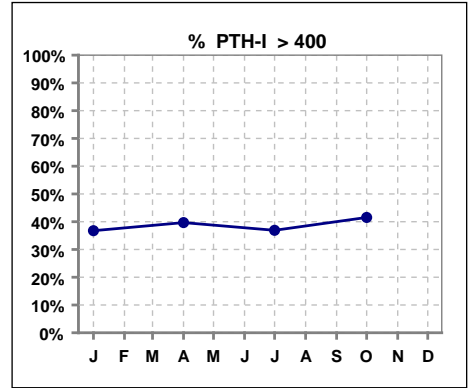
Methodology: a) All labs for 'Adequacy of Dialysis', 'Nutrition', 'Osteodystrophy', 'Anemia' and 'Diabetes' based on last value of month; b) BP's and #L processed are average of all values for month; c) Access data takes last access of month; d) Values for SGA and 'Infection Control' use most recent result.

III. OSTEODYSTROPHY

	Jan	Feb	Mar	Apr	May	Jun	Jul	Aug	Sep	Oct	Nov	Dec
# PO4	72	73	80	78	77	74	86	89	81	75	69	74
# PO4 < 3.5	12	12	12	15	13	6	13	10	11	7	4	14
Pop. Mean	5.1	4.9	5.2	5.1	4.8	5.2	5.1	5.1	5.1	5.2	5.1	5.0
Std. Deviation	1.69	1.59	1.69	1.98	1.64	1.50	1.61	1.68	1.53	1.25	1.44	1.59
% PO4 < 3.5	17%	16%	15%	19%	17%	8%	15%	11%	14%	9%	6%	19%



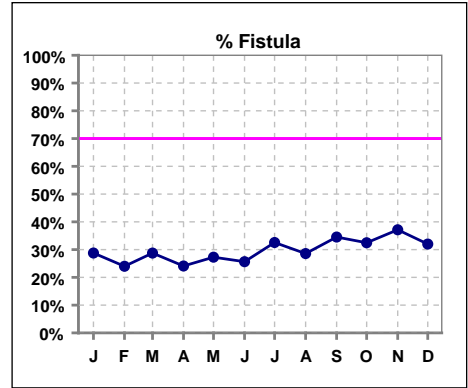
	Jan	Feb	Mar	Apr	May	Jun	Jul	Aug	Sep	Oct	Nov	Dec
# PTH-I	68			63			84			65		
# PTH-I > 400	25			25			31			27		
Pop. Mean	520			481			442			478		
Std. Deviation	678			502			451			674		
% PTH-I > 400	37%			40%			37%			42%		



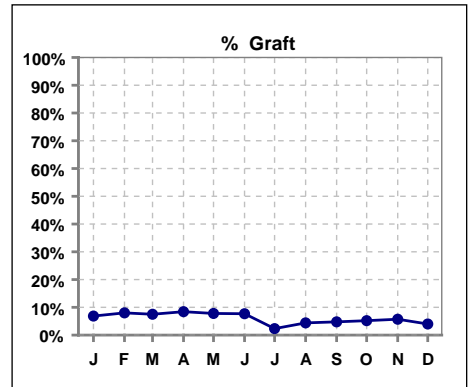
Methodology: a) All labs for 'Adequacy of Dialysis', 'Nutrition', 'Osteodystrophy', 'Anemia' and 'Diabetes' based on last value of month; b) BP's and #L processed are average of all values for month; c) Access data takes last access of month; d) Values for SGA and 'Infection Control' use most recent result.

IV. ACCESS

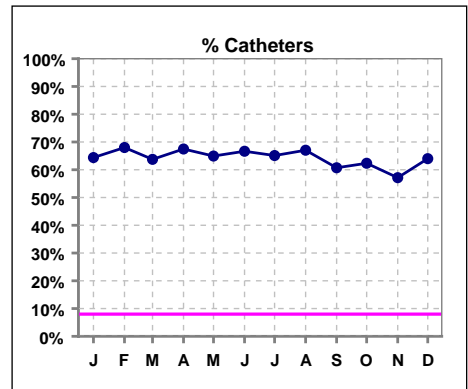
	Jan	Feb	Mar	Apr	May	Jun	Jul	Aug	Sep	Oct	Nov	Dec
# Access	73	75	80	83	77	78	86	91	84	77	70	75
# Fistula	21	18	23	20	21	20	28	26	29	25	26	24
% Fistula	29%	24%	29%	24%	27%	26%	33%	29%	35%	32%	37%	32%



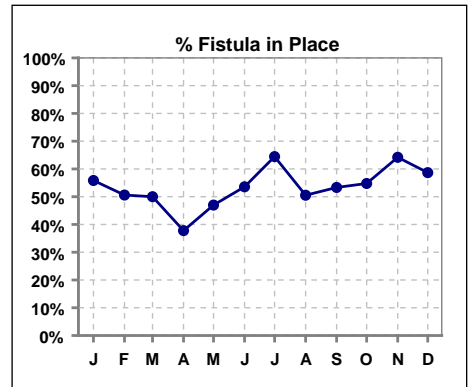
	Jan	Feb	Mar	Apr	May	Jun	Jul	Aug	Sep	Oct	Nov	Dec
# Access	73	75	80	83	77	78	86	91	84	77	70	75
# Graft	5	6	6	7	6	6	2	4	4	4	4	3
% Graft	7%	8%	8%	8%	8%	8%	2%	4%	5%	5%	6%	4%



	Jan	Feb	Mar	Apr	May	Jun	Jul	Aug	Sep	Oct	Nov	Dec
# Access	73	75	80	83	77	78	86	91	84	77	70	75
# Catheters	47	51	51	56	50	52	56	61	51	48	40	48
% Catheters	64%	68%	64%	67%	65%	67%	65%	67%	61%	62%	57%	64%



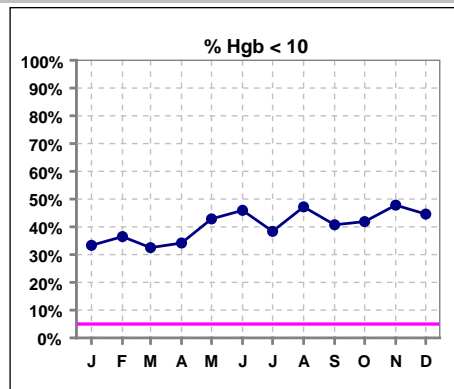
	Jan	Feb	Mar	Apr	May	Jun	Jul	Aug	Sep	Oct	Nov	Dec
# Patient	77	83	84	90	83	84	90	95	90	84	81	75
# Fistula in Place	43	42	42	34	39	45	58	48	48	46	52	44
% Fistula in Place	56%	51%	50%	38%	47%	54%	64%	51%	53%	55%	64%	59%



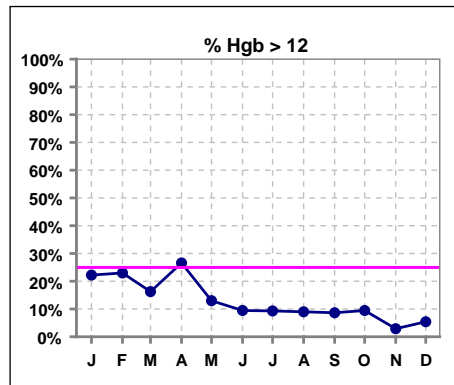
Methodology: a) All labs for 'Adequacy of Dialysis', 'Nutrition', 'Osteodystrophy', 'Anemia' and 'Diabetes' based on last value of month; b) BP's and #L processed are average of all values for month; c) Access data takes last access of month; d) Values for SGA and 'Infection Control' use most recent result.

V. ANEMIA

	Jan	Feb	Mar	Apr	May	Jun	Jul	Aug	Sep	Oct	Nov	Dec
# Hgb	72	74	80	79	77	74	86	89	81	74	69	74
# Hgb < 10	24	27	26	27	33	34	33	42	33	31	33	33
Pop. Mean	10.5	10.7	10.6	10.6	10.2	10.1	10.1	10.1	10.3	10.3	10.0	9.9
Std. Deviation	1.7	1.7	1.4	1.7	1.5	1.4	1.4	1.4	1.3	1.5	1.2	1.4
% Hgb < 10	33%	36%	33%	34%	43%	46%	38%	47%	41%	42%	48%	45%



	Jan	Feb	Mar	Apr	May	Jun	Jul	Aug	Sep	Oct	Nov	Dec
# Hgb	72	74	80	79	77	74	86	89	81	74	69	74
# Hgb > 12	16	17	13	21	10	7	8	8	7	7	2	4
Pop. Mean	10.5	10.7	10.6	10.6	10.2	10.1	10.1	10.1	10.3	10.3	10.0	9.9
Std. Deviation	1.7	1.7	1.4	1.7	1.5	1.4	1.4	1.4	1.3	1.5	1.2	1.4
% Hgb > 12	22%	23%	16%	27%	13%	9%	9%	9%	9%	9%	3%	5%



Methodology: a) All labs for 'Adequacy of Dialysis', 'Nutrition', 'Osteodystrophy', 'Anemia' and 'Diabetes' based on last value of month; b) BP's and #L processed are average of all values for month; c) Access data takes last access of month; d) Values for SGA and 'Infection Control' use most recent result.