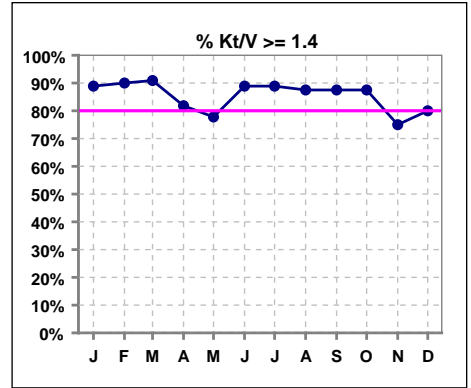
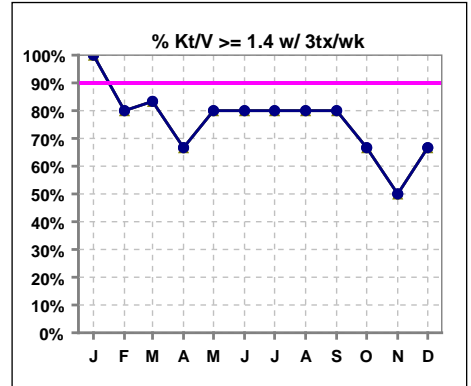


I. ADEQUACY OF DIALYSIS

	Jan	Feb	Mar	Apr	May	Jun	Jul	Aug	Sep	Oct	Nov	Dec
# Kt/V	9	10	11	11	9	9	9	8	8	8	4	5
# Kt/V >= 1.4	8	9	10	9	7	8	8	7	7	7	3	4
Pop. Mean	1.86	1.66	1.65	1.47	1.68	1.77	1.87	1.84	1.94	1.86	1.82	1.42
Std. Deviation	0.54	0.22	0.22	0.50	0.48	0.38	0.51	0.28	0.44	0.43	0.65	0.77
% Kt/V >= 1.4	89%	90%	91%	82%	78%	89%	89%	88%	88%	88%	75%	80%
% Kt/V >= 1.2	89%	100%	100%	91%	78%	100%	100%	100%	100%	100%	75%	80%



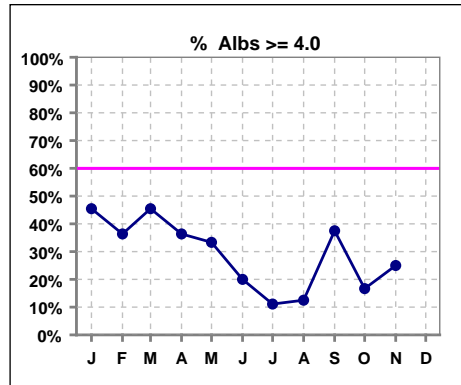
	Jan	Feb	Mar	Apr	May	Jun	Jul	Aug	Sep	Oct	Nov	Dec
# Kt/V w/ 3tx.wk	5	5	6	6	5	5	5	5	5	3	2	3
# Kt/V >= 1.4 w/ 3tx/wk	5	4	5	4	4	4	4	4	4	2	1	2
Pop. Mean	1.95	1.53	1.54	1.28	1.59	1.66	1.62	1.68	1.65	1.63	1.46	1.18
Std. Deviation	0.63	0.15	0.17	0.62	0.36	0.31	0.31	0.23	0.26	0.42	0.56	0.99
% Kt/V >= 1.4 w/ 3tx/wk	00%	80%	83%	67%	80%	80%	80%	80%	80%	67%	50%	67%



*Albumin values use BCG method - as of July 2001

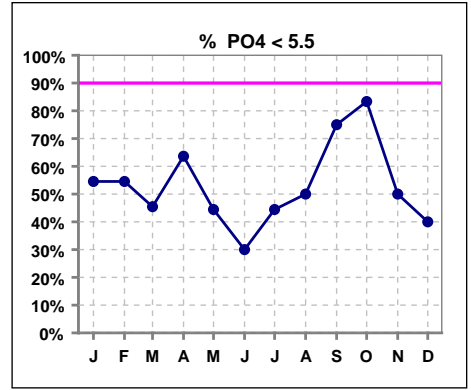
II. NUTRITION

	Jan	Feb	Mar	Apr	May	Jun	Jul	Aug	Sep	Oct	Nov	Dec
# Albumin	11	11	11	11	9	10	9	8	8	6	4	5
# Albumin >= 4.0	5	4	5	4	3	2	1	1	3	1	1	
Pop. Mean	3.9	3.9	3.9	3.8	3.8	3.8	3.7	3.7	3.7	3.6	3.8	3.6
Std. Deviation	0.38	0.41	0.39	0.41	0.32	0.26	0.33	0.30	0.40	0.30	0.17	0.26
% Alb >= 3.5	91%	82%	91%	73%	78%	100%	78%	88%	63%	67%	100%	60%
% Alb >= 3.0	100%	100%	100%	100%	100%	100%	100%	100%	100%	100%	100%	100%
% Alb >= 4.0	45%	36%	45%	36%	33%	20%	11%	13%	38%	17%	25%	

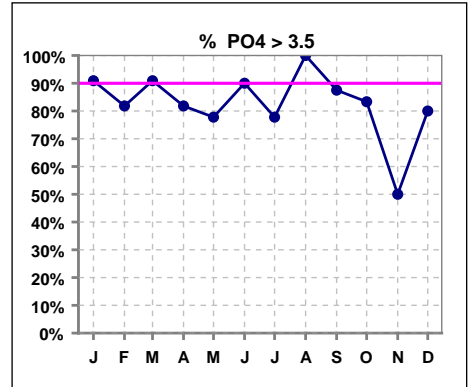


III. OSTEODYSTROPHY

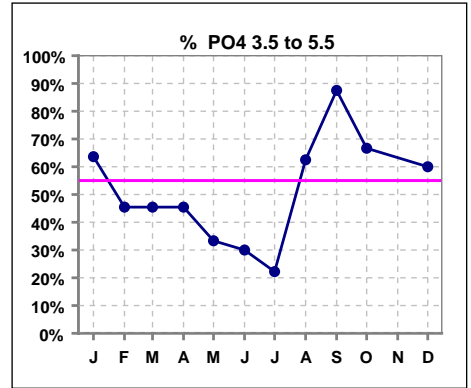
	Jan	Feb	Mar	Apr	May	Jun	Jul	Aug	Sep	Oct	Nov	Dec
# PO4	11	11	11	11	9	10	9	8	8	6	4	5
# PO4 < 5.5	6	6	5	7	4	3	4	4	6	5	2	2
Pop. Mean	5.3	4.8	5.7	5.2	5.8	5.8	5.0	5.5	4.5	4.7	4.3	4.6
Std. Deviation	1.43	1.40	1.93	1.93	2.93	1.60	1.27	1.10	0.94	1.16	2.12	1.42
% PO4 < 5.5	55%	55%	45%	64%	44%	30%	44%	50%	75%	83%	50%	40%



	Jan	Feb	Mar	Apr	May	Jun	Jul	Aug	Sep	Oct	Nov	Dec
# PO4	11	11	11	11	9	10	9	8	8	6	4	5
# PO4 > 3.5	10	9	10	9	7	9	7	8	7	5	2	4
Pop. Mean	5.3	4.8	5.7	5.2	5.8	5.8	5.0	5.5	4.5	4.7	4.3	4.6
Std. Deviation	1.43	1.40	1.93	1.93	2.93	1.60	1.27	1.10	0.94	1.16	2.12	1.42
% PO4 > 3.5	91%	82%	91%	82%	78%	90%	78%	100%	88%	83%	50%	80%

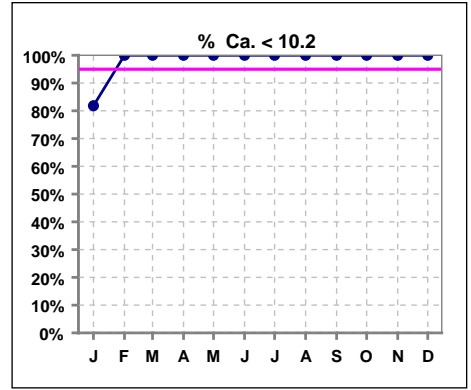


	Jan	Feb	Mar	Apr	May	Jun	Jul	Aug	Sep	Oct	Nov	Dec
# PO4	11	11	11	11	9	10	9	8	8	6	4	5
# PO4 3.5 to 5.5	7	5	5	5	3	3	2	5	7	4		3
Pop. Mean	5.3	4.8	5.7	5.2	5.8	5.8	5.0	5.5	4.5	4.7	4.3	4.6
Std. Deviation	1.43	1.40	1.93	1.93	2.93	1.60	1.27	1.10	0.94	1.16	2.12	1.42
% PO4 3.5 to 5.5	64%	45%	45%	45%	33%	30%	22%	63%	88%	67%		60%

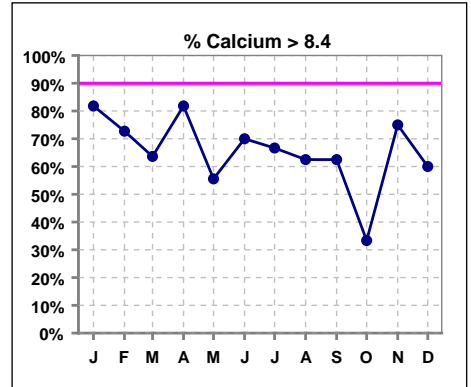


III. OSTEODYSTROPHY - CONT.

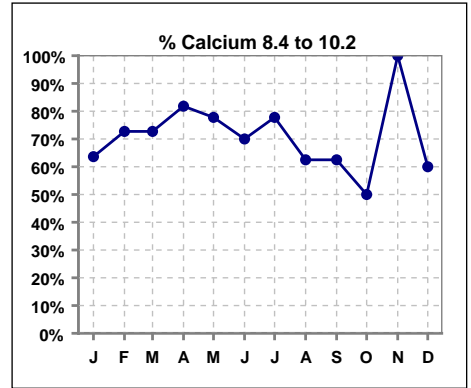
	Jan	Feb	Mar	Apr	May	Jun	Jul	Aug	Sep	Oct	Nov	Dec
# Calcium	11	11	11	11	9	10	9	8	8	6	4	5
# Calcium < 10.2	9	11	11	11	9	10	9	8	8	6	4	5
Pop. Mean	9.2	8.9	8.7	8.9	8.6	8.9	8.7	8.5	8.6	8.6	9.2	8.9
Std. Deviation	0.92	0.59	0.57	0.68	0.61	0.81	0.61	1.05	0.72	0.78	0.66	0.82
% Ca < 10.2	82%	100%	100%	100%	100%	100%	100%	100%	100%	100%	100%	100%



	Jan	Feb	Mar	Apr	May	Jun	Jul	Aug	Sep	Oct	Nov	Dec
# Calcium	11	11	11	11	9	10	9	8	8	6	4	5
# Calcium > 8.4	9	8	7	9	5	7	6	5	5	2	3	3
Pop. Mean	9.2	8.9	8.7	8.9	8.6	8.9	8.7	8.5	8.6	8.6	9.2	8.9
Std. Deviation	0.92	0.59	0.57	0.68	0.61	0.81	0.61	1.05	0.72	0.78	0.66	0.82
% Calcium > 8.4	82%	73%	64%	82%	56%	70%	67%	63%	63%	33%	75%	60%

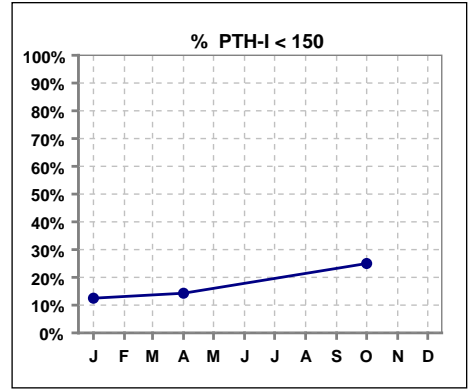


	Jan	Feb	Mar	Apr	May	Jun	Jul	Aug	Sep	Oct	Nov	Dec
# Calcium	11	11	11	11	9	10	9	8	8	6	4	5
# Calcium 8.4 to 10.2	7	8	8	9	7	7	7	5	5	3	4	3
Pop. Mean	9.2	8.9	8.7	8.9	8.6	8.9	8.7	8.5	8.6	8.6	9.2	8.9
Std. Deviation	0.92	0.59	0.57	0.68	0.61	0.81	0.61	1.05	0.72	0.78	0.66	0.82
% Calcium 8.4 to 10.2	64%	73%	73%	82%	78%	70%	78%	63%	63%	50%	100%	60%

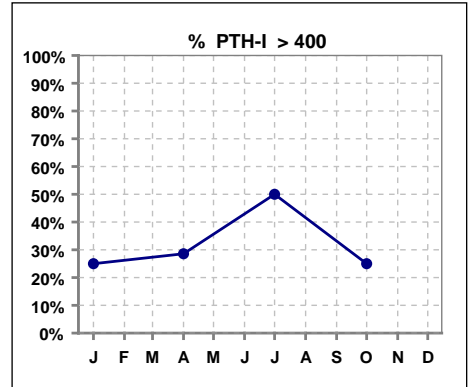


III. OSTEODYSTROPHY - CONT.

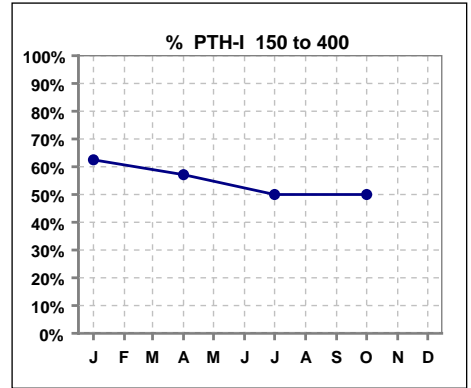
	Jan	Feb	Mar	Apr	May	Jun	Jul	Aug	Sep	Oct	Nov	Dec
# PTH-I	8			7			6			4		
# PTH-I < 150	1			1						1		
Pop. Mean	419			417			628			311		
Std. Deviation	357			265			503			293		
% PTH-I < 150	13%			14%						25%		



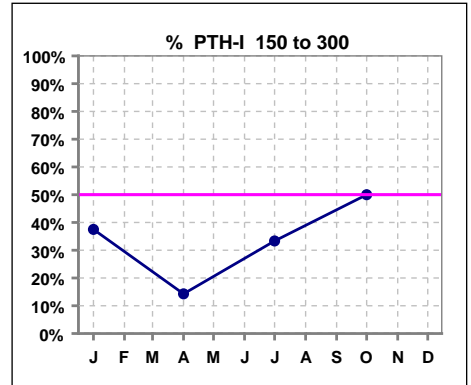
	Jan	Feb	Mar	Apr	May	Jun	Jul	Aug	Sep	Oct	Nov	Dec
# PTH-I	8			7			6			4		
# PTH-I > 400	2			2			3			1		
Pop. Mean	419			417			628			311		
Std. Deviation	357			265			503			293		
% PTH-I > 400	25%			29%			50%			25%		



	Jan	Feb	Mar	Apr	May	Jun	Jul	Aug	Sep	Oct	Nov	Dec
# PTH-I	8			7			6			4		
# PTH-I 150 to 400	5			4			3			2		
Pop. Mean	419			417			628			311		
Std. Deviation	357			265			503			293		
% PTH-I 150 to 400	63%			57%			50%			50%		



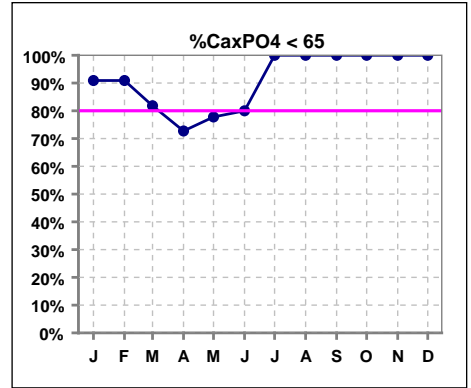
	Jan	Feb	Mar	Apr	May	Jun	Jul	Aug	Sep	Oct	Nov	Dec
# PTH-I	8			7			6			4		
# PTH-I 150 to 300	3			1			2			2		
Pop. Mean	419			417			628			311		
Std. Deviation	357			265			503			293		
% PTH-I 150 to 300	38%			14%			33%			50%		



Methodology: a) All labs for 'Adequacy of Dialysis', 'Nutrition', 'Osteodystrophy' and 'Anemia' based on last value of month; b) Access data takes last access of month; c) Values for 'Infection Control' uses most recent result.

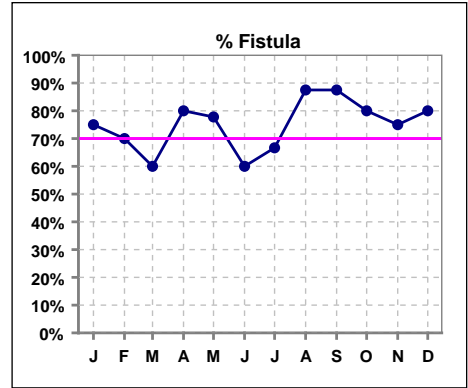
III. OSTEODYSTROPHY - CONT.

	Jan	Feb	Mar	Apr	May	Jun	Jul	Aug	Sep	Oct	Nov	Dec
# Ca x PO4	11	11	11	11	9	10	9	8	8	6	4	5
# Ca x PO4 < 65	10	10	9	8	7	8	9	8	8	6	4	5
Pop. Mean	49.3	43.8	48.4	46.3	47.6	50.0	43.5	46.3	38.4	40.5	40.2	41.0
Std. Deviation	15.1	14.4	17.3	18.5	29.9	15.5	11.4	8.7	9.6	11.4	22.1	11.8
% CaxPO4 < 65	91%	91%	82%	73%	78%	80%	100%	100%	100%	100%	100%	100%
% CaxPO4 < 55	82%	82%	73%	73%	78%	70%	89%	88%	100%	100%	50%	100%

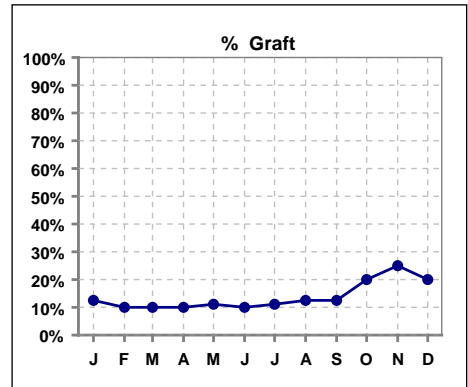


IV. ACCESS

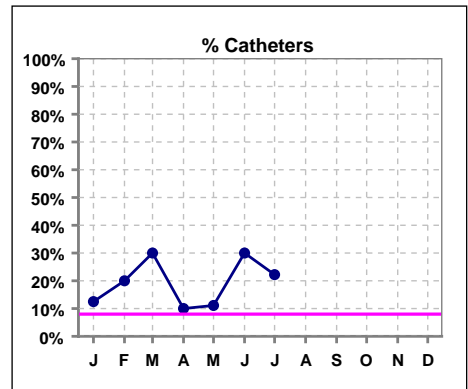
	Jan	Feb	Mar	Apr	May	Jun	Jul	Aug	Sep	Oct	Nov	Dec
# Access	8	10	10	10	9	10	9	8	8	5	4	5
# Fistula	6	7	6	8	7	6	6	7	7	4	3	4
% Fistula	75%	70%	60%	80%	78%	60%	67%	88%	88%	80%	75%	80%



	Jan	Feb	Mar	Apr	May	Jun	Jul	Aug	Sep	Oct	Nov	Dec
# Access	8	10	10	10	9	10	9	8	8	5	4	5
# Graft	1	1	1	1	1	1	1	1	1	1	1	1
% Graft	13%	10%	10%	10%	11%	10%	11%	13%	13%	20%	25%	20%



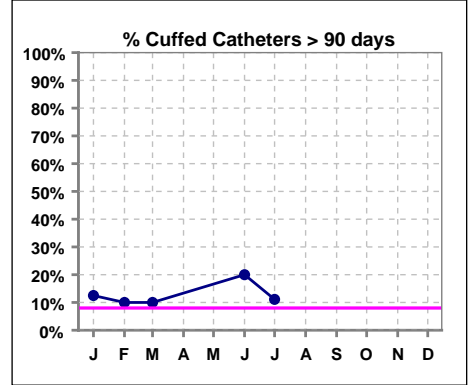
	Jan	Feb	Mar	Apr	May	Jun	Jul	Aug	Sep	Oct	Nov	Dec
# Access	8	10	10	10	9	10	9	8	8	5	4	5
# Catheters	1	2	3	1	1	3	2					
% Catheters	13%	20%	30%	10%	11%	30%	22%					



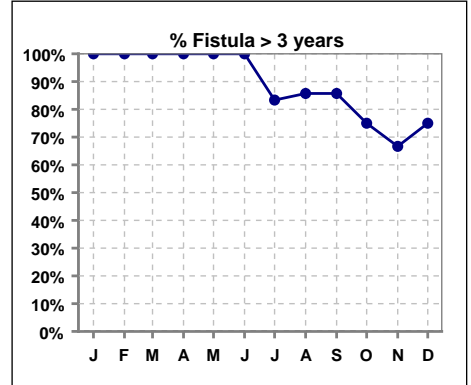
IV. ACCESS - CONT.

Cuffed Catheters > 90 days

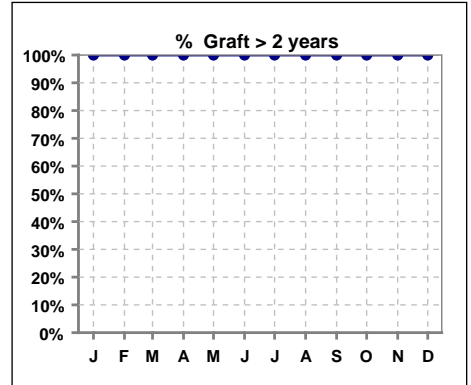
	Jan	Feb	Mar	Apr	May	Jun	Jul	Aug	Sep	Oct	Nov	Dec
# Access	8	10	10	10	9	10	9	8	8	5	4	5
# Cuffed Catheters	1	1	1			2	1					
% Cuffed Catheters	13%	10%	10%			20%	11%					



	Jan	Feb	Mar	Apr	May	Jun	Jul	Aug	Sep	Oct	Nov	Dec
# Fistula	6	7	6	8	7	6	6	7	7	4	3	4
# Fistula > 3 yrs	6	7	6	8	7	6	5	6	6	3	2	3
% Fistula > 3 yrs	100%	100%	100%	100%	100%	100%	83%	86%	86%	75%	67%	75%



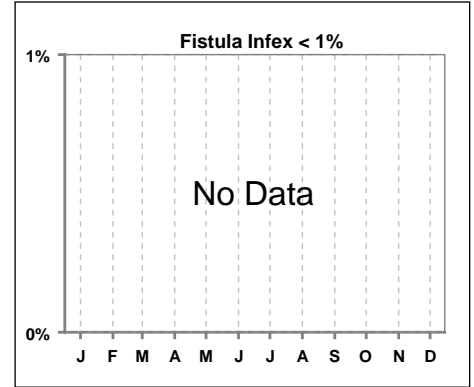
	Jan	Feb	Mar	Apr	May	Jun	Jul	Aug	Sep	Oct	Nov	Dec
# Graft	1	1	1	1	1	1	1	1	1	1	1	1
# Graft > 2 yrs	1	1	1	1	1	1	1	1	1	1	1	1
% Graft > 2 yrs	100%	100%	100%	100%	100%	100%	100%	100%	100%	100%	100%	100%



IV. ACCESS - CONT.

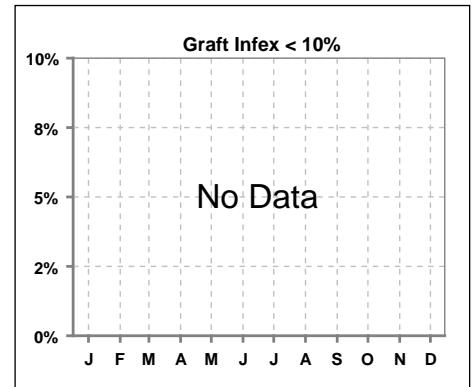
Infection per use-life of access fistula

	Jan	Feb	Mar	Apr	May	Jun	Jul	Aug	Sep	Oct	Nov	Dec
Infex per use-life												



Infection per use-life of access graft

	Jan	Feb	Mar	Apr	May	Jun	Jul	Aug	Sep	Oct	Nov	Dec
Infex per use-life												



Thrombosis Episode - access fistula

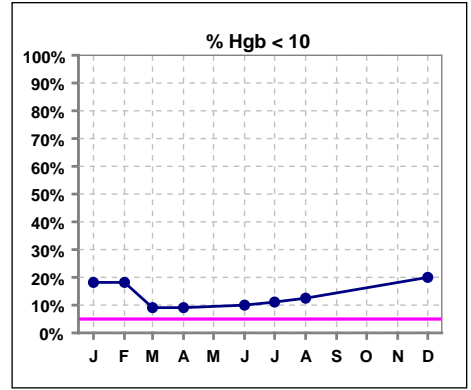
	Jan	Feb	Mar	Apr	May	Jun	Jul	Aug	Sep	Oct	Nov	Dec
Current Month												
Rolling Year-to-date												

Thrombosis Episode - access graft

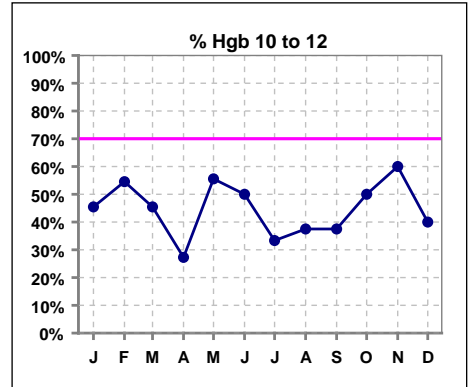
	Jan	Feb	Mar	Apr	May	Jun	Jul	Aug	Sep	Oct	Nov	Dec
Current Month												
Rolling Year-to-date						0.56	1.07					

V. ANEMIA

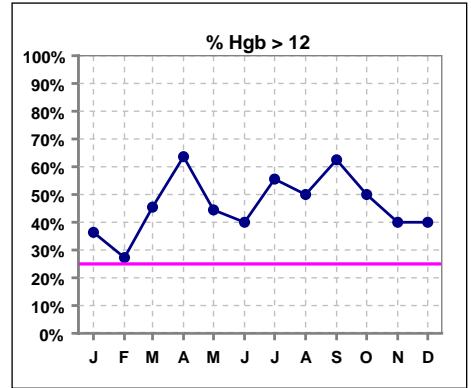
	Jan	Feb	Mar	Apr	May	Jun	Jul	Aug	Sep	Oct	Nov	Dec
# Hgb	11	11	11	11	9	10	9	8	8	6	5	5
# Hgb < 10	2	2	1	1		1	1	1				1
Pop. Mean	12.0	11.6	12.6	12.2	12.1	11.5	11.8	12.2	12.2	12.2	12.0	11.7
Std. Deviation	1.6	1.9	1.6	1.7	1.3	1.6	2.3	1.3	1.4	1.2	1.4	1.5
% Hgb < 10	18%	18%	9%	9%		10%	11%	13%				20%



	Jan	Feb	Mar	Apr	May	Jun	Jul	Aug	Sep	Oct	Nov	Dec
# Hgb	11	11	11	11	9	10	9	8	8	6	5	5
# Hgb 10 to 12	5	6	5	3	5	5	3	3	3	3	3	2
Pop. Mean	12.0	11.6	12.6	12.2	12.1	11.5	11.8	12.2	12.2	12.2	12.0	11.7
Std. Deviation	1.6	1.9	1.6	1.7	1.3	1.6	2.3	1.3	1.4	1.2	1.4	1.5
% Hgb 10 to 12	45%	55%	45%	27%	56%	50%	33%	38%	38%	50%	60%	40%



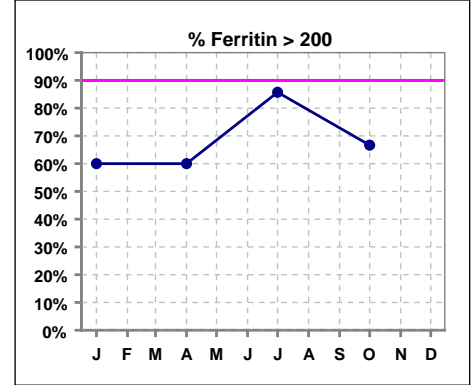
	Jan	Feb	Mar	Apr	May	Jun	Jul	Aug	Sep	Oct	Nov	Dec
# Hgb	11	11	11	11	9	10	9	8	8	6	5	5
# Hgb > 12	4	3	5	7	4	4	5	4	5	3	2	2
Pop. Mean	12.0	11.6	12.6	12.2	12.1	11.5	11.8	12.2	12.2	12.2	12.0	11.7
Std. Deviation	1.6	1.9	1.6	1.7	1.3	1.6	2.3	1.3	1.4	1.2	1.4	1.5
% Hgb > 12	36%	27%	45%	64%	44%	40%	56%	50%	63%	50%	40%	40%



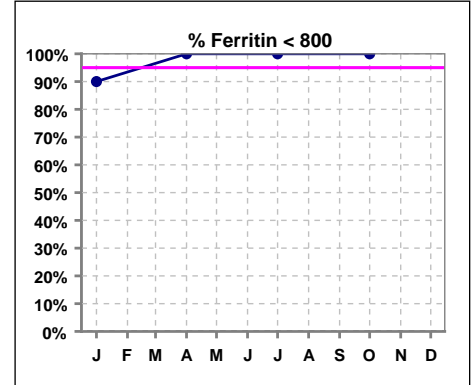
V. ANEMIA - CONT.

Iron Profile

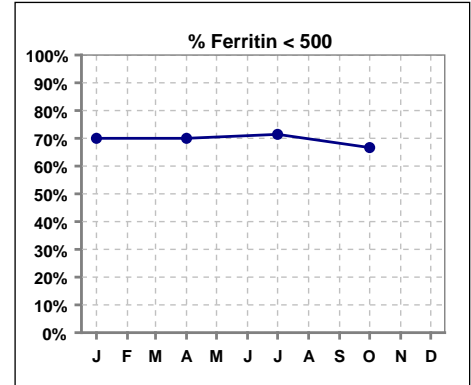
	Jan	Feb	Mar	Apr	May	Jun	Jul	Aug	Sep	Oct	Nov	Dec
# Ferritin	10			10			7			6		
# Ferritin > 200	6			6			6			4		
Pop. Mean	366			315			390			364		
Std. Deviation	288			221			241			254		
% Ferritin >= 200	60%			60%			86%			67%		



	Jan	Feb	Mar	Apr	May	Jun	Jul	Aug	Sep	Oct	Nov	Dec
# Ferritin	10			10			7			6		
# Ferritin < 800	9			10			7			6		
Pop. Mean	366			315			390			364		
Std. Deviation	288			221			241			254		
% Ferritin < 800	90%			100%			100%			100%		

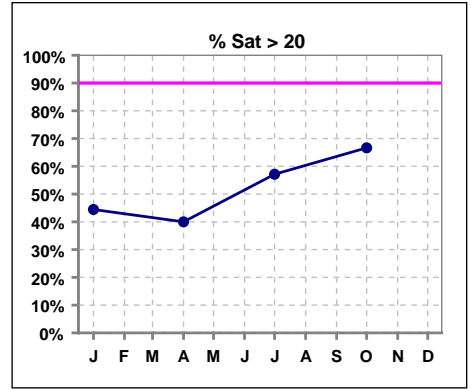


	Jan	Feb	Mar	Apr	May	Jun	Jul	Aug	Sep	Oct	Nov	Dec
# Ferritin	10			10			7			6		
# Ferritin < 500	7			7			5			4		
Pop. Mean	366			315			390			364		
Std. Deviation	288			221			241			254		
% Ferritin < 500	70%			70%			71%			67%		

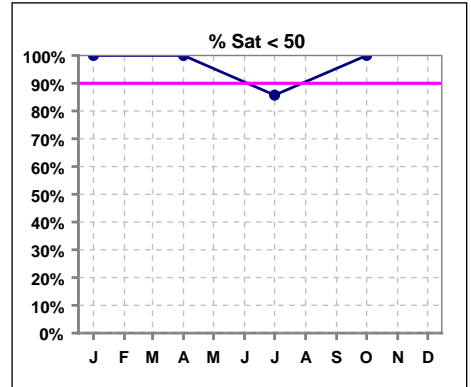


V. ANEMIA - CONT.

	Jan	Feb	Mar	Apr	May	Jun	Jul	Aug	Sep	Oct	Nov	Dec
# % Sat	9			10			7			6		
# % Sat > 20	4			4			4			4		
Pop. Mean	23			23			22			21		
Std. Deviation	12			9			14			11		
% Sat% > 20	44%			40%			57%			67%		



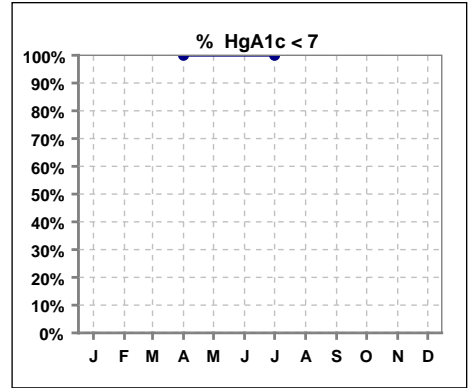
	Jan	Feb	Mar	Apr	May	Jun	Jul	Aug	Sep	Oct	Nov	Dec
# % Sat	9			10			7			6		
# % Sat < 50	9			10			6			6		
Pop. Mean	23			23			22			21		
Std. Deviation	12			9			14			11		
% Sat% < 50	100%			100%			86%			100%		



Methodology: a) All labs for 'Adequacy of Dialysis', 'Nutrition', 'Osteodystrophy' and 'Anemia' based on last value of month; b) Access data takes last access of month; c) Values for 'Infection Control' uses most recent result.

VI. Diabetes

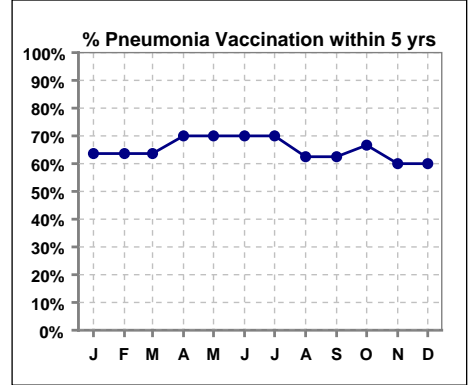
	Jan	Feb	Mar	Apr	May	Jun	Jul	Aug	Sep	Oct	Nov	Dec
# HgA1c	1			1			2					
# HgA1c < 7				1			2					
Pop. Mean	7.0			6.4			6.1					
Std. Deviation							0.85					
% HgA1c < 7				100%			100%					



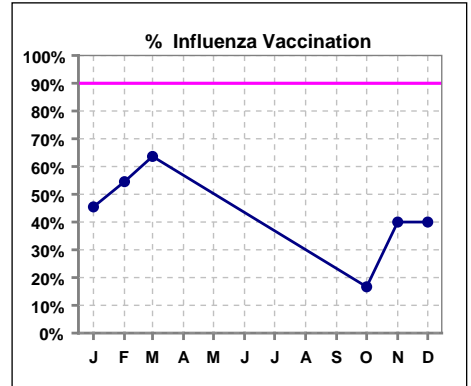
VII. Infection Control

Pneumonia vaccination within the past five years

	Jan	Feb	Mar	Apr	May	Jun	Jul	Aug	Sep	Oct	Nov	Dec
# Patient	11	11	11	10	10	10	10	8	8	6	5	5
# Pneumonia	7	7	7	7	7	7	7	5	5	4	3	3
% Pneumonia	64%	64%	64%	70%	70%	70%	70%	63%	63%	67%	60%	60%



	Jan	Feb	Mar	Apr	May	Jun	Jul	Aug	Sep	Oct	Nov	Dec
# Patient	11	11	11						8	6	5	5
# Influenza	5	6	7							1	2	2
% Influenza	45%	55%	64%							17%	40%	40%



Methodology: a) All labs for 'Adequacy of Dialysis', 'Nutrition', 'Osteodystrophy' and 'Anemia' based on last value of month; b) Access data takes last access of month; c) Values for 'Infection Control' uses most recent result.