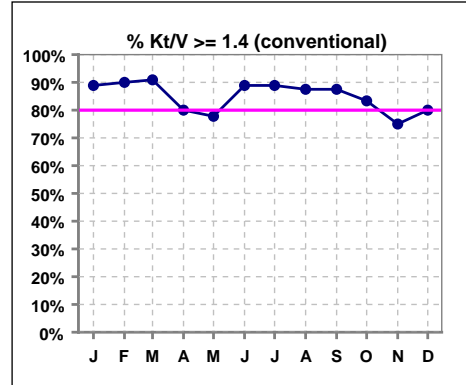


**I. ADEQUACY OF DIALYSIS**

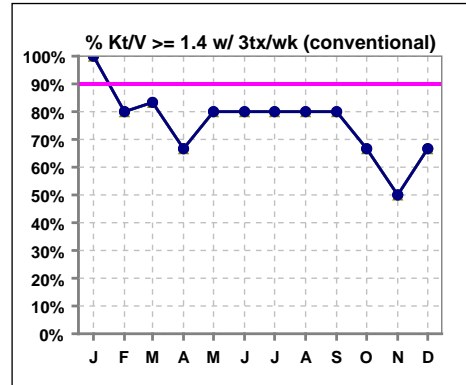
**Conventional**

	Jan	Feb	Mar	Apr	May	Jun	Jul	Aug	Sep	Oct	Nov	Dec
# Kt/V	9	10	11	10	9	9	9	8	8	6	4	5
# Kt/V >= 1.4	8	9	10	8	7	8	8	7	7	5	3	4
Pop. Mean	1.86	1.66	1.65	1.45	1.68	1.77	1.87	1.84	1.94	1.81	1.82	1.42
Std. Deviation	0.54	0.22	0.22	0.52	0.48	0.38	0.51	0.28	0.44	0.49	0.65	0.77
% Kt/V >= 1.4	89%	90%	91%	80%	78%	89%	89%	88%	88%	83%	75%	80%
% Kt/V >= 1.2	89%	100%	100%	90%	78%	100%	100%	100%	100%	100%	75%	80%



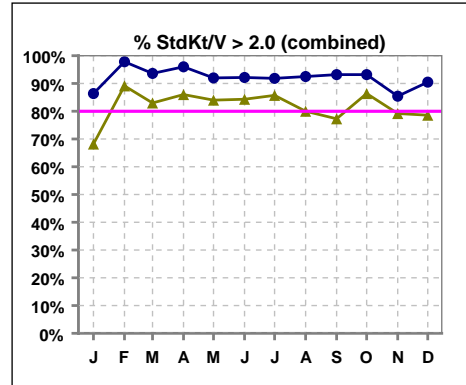
**Conventional**

	Jan	Feb	Mar	Apr	May	Jun	Jul	Aug	Sep	Oct	Nov	Dec
# Kt/V w/ 3tx/wk	5	5	6	6	5	5	5	5	5	3	2	3
# Kt/V >= 1.4 w/ 3tx/wk	5	4	5	4	4	4	4	4	4	2	1	2
Pop. Mean	1.95	1.53	1.54	1.28	1.59	1.66	1.62	1.68	1.65	1.63	1.46	1.18
Std. Deviation	0.63	0.15	0.17	0.62	0.36	0.31	0.31	0.23	0.26	0.42	0.56	0.99
% Kt/V >= 1.4 w/ 3tx/wk	100%	80%	83%	67%	80%	80%	80%	80%	80%	67%	50%	67%



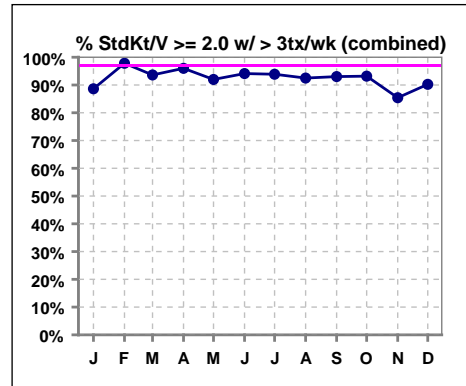
**Combined standard nocturnal/short daily**

	Jan	Feb	Mar	Apr	May	Jun	Jul	Aug	Sep	Oct	Nov	Dec
# StdKt/V	44	46	47	50	50	51	49	40	44	44	48	42
# StdKt/V > 2.0	38	45	44	48	46	47	45	37	41	41	41	38
Pop. Mean	2.92	3.25	3.12	3.05	2.95	3.12	3.12	3.13	3.23	3.24	3.01	2.99
Std. Deviation	0.93	0.86	0.86	0.59	0.72	0.77	0.77	0.82	0.82	0.82	0.81	0.74
% StdKt/V > 2.0	86%	98%	94%	96%	92%	92%	92%	93%	93%	93%	85%	90%
% StdKt/V >= 2.4	68%	89%	83%	86%	84%	84%	86%	80%	77%	86%	79%	79%



**Combined standard nocturnal/short daily**

	Jan	Feb	Mar	Apr	May	Jun	Jul	Aug	Sep	Oct	Nov	Dec
# StdKt/V w/>3tx/wk	44	46	47	50	50	51	49	40	43	44	48	41
# >= 2.0 w/>3tx/wk	39	45	44	48	46	48	46	37	40	41	41	37
Pop. Mean	2.96	3.25	3.12	3.05	2.95	3.14	3.15	3.15	3.25	3.24	3.04	3.01
Std. Deviation	0.93	0.86	0.86	0.59	0.72	0.74	0.73	0.81	0.81	0.82	0.80	0.75
% >= 2.0 w/>3tx/wk	89%	98%	94%	96%	92%	94%	94%	93%	93%	93%	85%	90%

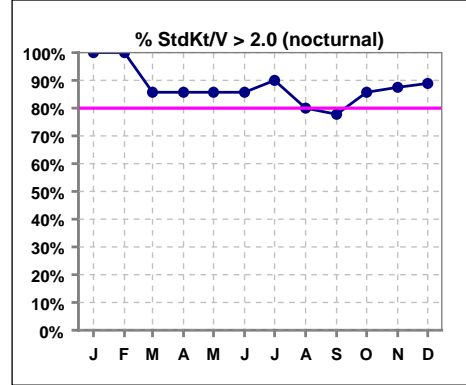


Methodology: a) All labs for 'Adequacy of Dialysis', 'Nutrition', 'Osteodystrophy' and 'Anemia' based on last value of month; b) Access data takes last access of month; c) Values for 'Infection Control' uses most recent result.

**I. ADEQUACY OF DIALYSIS - CONT.**

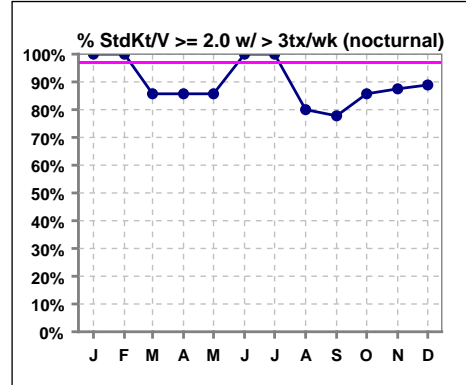
**Standard nocturnal**

	Jan	Feb	Mar	Apr	May	Jun	Jul	Aug	Sep	Oct	Nov	Dec
# StdKt/V	6	7	7	7	7	7	10	10	9	7	8	9
# StdKt/V > 2.0	6	7	6	6	6	6	9	8	7	6	7	8
Pop. Mean	3.36	4.04	3.44	3.25	2.88	2.87	3.06	2.79	2.87	3.14	3.10	2.82
Std. Deviation	1.56	1.42	1.21	0.93	0.61	0.87	0.75	0.81	0.74	1.12	1.03	0.76
% StdKt/V > 2.0	100%	100%	86%	86%	86%	86%	90%	80%	78%	86%	88%	89%



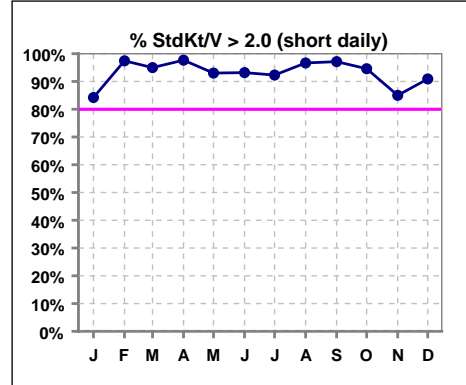
**Standard nocturnal**

	Jan	Feb	Mar	Apr	May	Jun	Jul	Aug	Sep	Oct	Nov	Dec
# StdKt/V w/ >3tx/wk	6	7	7	7	7	7	10	10	9	7	8	9
# >= 2.0 w/ >3tx/wk	6	7	6	6	6	7	10	8	7	6	7	8
Pop. Mean	3.31	4.04	3.44	3.25	2.88	3.00	3.16	2.79	2.87	3.14	3.10	2.82
Std. Deviation	1.60	1.42	1.21	0.93	0.61	0.66	0.57	0.81	0.74	1.12	1.03	0.76
% >= 2.0 w/ >3tx/wk	100%	100%	86%	86%	86%	100%	100%	80%	78%	86%	88%	89%



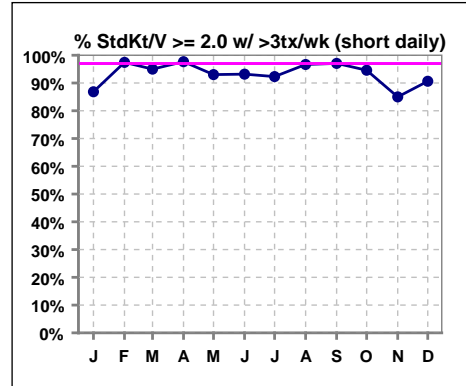
**Standard short daily**

	Jan	Feb	Mar	Apr	May	Jun	Jul	Aug	Sep	Oct	Nov	Dec
# StdKt/V	38	39	40	43	43	44	39	30	35	37	40	33
# StdKt/V > 2.0	32	38	38	42	40	41	36	29	34	35	34	30
Pop. Mean	2.85	3.11	3.06	3.01	2.96	3.16	3.13	3.25	3.32	3.26	3.00	3.04
Std. Deviation	0.80	0.65	0.79	0.52	0.74	0.76	0.78	0.80	0.83	0.78	0.77	0.74
% StdKt/V > 2.0	84%	97%	95%	98%	93%	93%	92%	97%	97%	95%	85%	91%



**Standard short daily**

	Jan	Feb	Mar	Apr	May	Jun	Jul	Aug	Sep	Oct	Nov	Dec
# StdKt/V w/ >3tx/wk	38	39	40	43	43	44	39	30	34	37	40	32
# >= 2.0 w/ >3tx/wk	33	38	38	42	40	41	36	29	33	35	34	29
Pop. Mean	2.90	3.11	3.06	3.01	2.96	3.16	3.15	3.28	3.36	3.26	3.02	3.06
Std. Deviation	0.79	0.65	0.79	0.52	0.74	0.76	0.77	0.78	0.81	0.78	0.77	0.75
% >= 2.0 w/ >3tx/wk	87%	97%	95%	98%	93%	93%	92%	97%	97%	95%	85%	91%

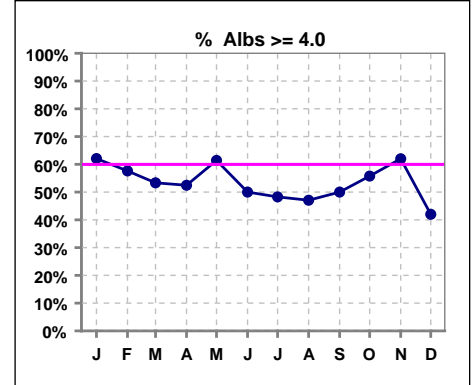


Methodology: a) All labs for 'Adequacy of Dialysis', 'Nutrition', 'Osteodystrophy' and 'Anemia' based on last value of month; b) Access data takes last access of month; c) Values for 'Infection Control' uses most recent result.

\*Albumin values use BCG method - as of July 2001

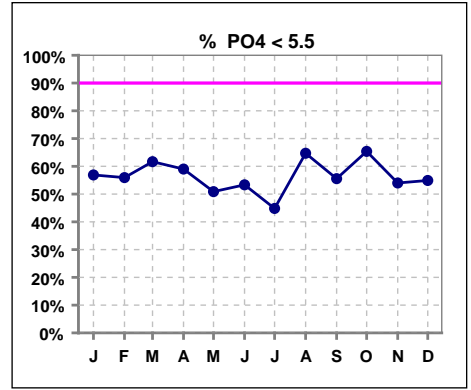
**II. NUTRITION**

	Jan	Feb	Mar	Apr	May	Jun	Jul	Aug	Sep	Oct	Nov	Dec
# Albumin	58	59	60	61	57	60	58	51	54	52	50	50
# Albumin >= 4.0	36	34	32	32	35	30	28	24	27	29	31	21
Pop. Mean	4.1	4.0	4.0	3.9	4.1	4.0	3.9	3.9	4.0	3.9	4.1	3.9
Std. Deviation	0.48	0.41	0.46	0.46	0.40	0.44	0.50	0.43	0.45	0.46	0.43	0.42
% Alb >= 3.5	91%	86%	88%	87%	91%	88%	88%	82%	83%	81%	92%	86%
% Alb >= 3.0	98%	100%	98%	98%	100%	98%	95%	98%	100%	100%	98%	98%
<b>% Alb &gt;= 4.0</b>	<b>62%</b>	<b>58%</b>	<b>53%</b>	<b>52%</b>	<b>61%</b>	<b>50%</b>	<b>48%</b>	<b>47%</b>	<b>50%</b>	<b>56%</b>	<b>62%</b>	<b>42%</b>

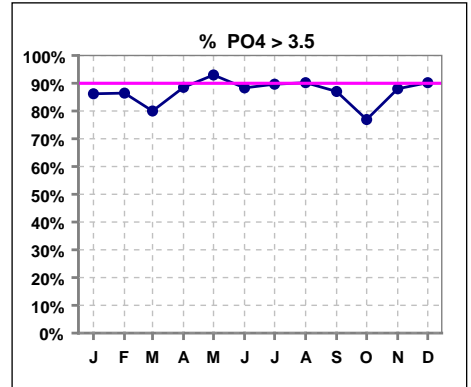


**III. OSTEODYSTROPHY**

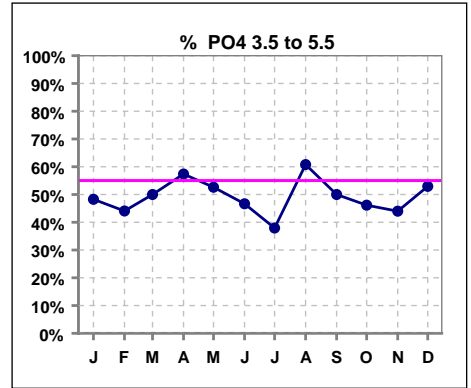
	Jan	Feb	Mar	Apr	May	Jun	Jul	Aug	Sep	Oct	Nov	Dec
# PO4	58	59	60	61	57	60	58	51	54	52	50	51
# PO4 < 5.5	33	33	37	36	29	32	26	33	30	34	27	28
Pop. Mean	5.3	5.2	5.1	5.2	5.4	5.3	5.4	5.0	5.3	4.9	5.4	5.3
Std. Deviation	1.68	1.80	1.52	1.52	1.55	1.51	1.53	1.37	1.70	1.67	1.81	1.70
% PO4 < 5.5	57%	56%	62%	59%	51%	53%	45%	65%	56%	65%	54%	55%



	Jan	Feb	Mar	Apr	May	Jun	Jul	Aug	Sep	Oct	Nov	Dec
# PO4	58	59	60	61	57	60	58	51	54	52	50	51
# PO4 > 3.5	50	51	48	54	53	53	52	46	47	40	44	46
Pop. Mean	5.3	5.2	5.1	5.2	5.4	5.3	5.4	5.0	5.3	4.9	5.4	5.3
Std. Deviation	1.68	1.80	1.52	1.52	1.55	1.51	1.53	1.37	1.70	1.67	1.81	1.70
% PO4 > 3.5	86%	86%	80%	89%	93%	88%	90%	90%	87%	77%	88%	90%

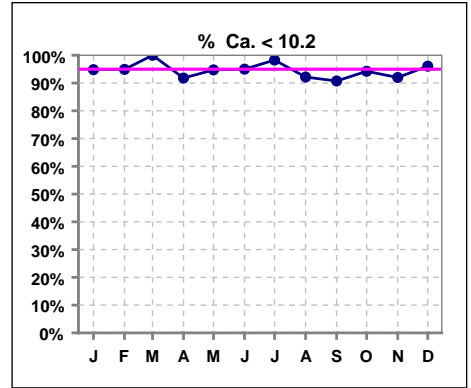


	Jan	Feb	Mar	Apr	May	Jun	Jul	Aug	Sep	Oct	Nov	Dec
# PO4	58	59	60	61	57	60	58	51	54	52	50	51
# PO4 3.5 to 5.5	28	26	30	35	30	28	22	31	27	24	22	27
Pop. Mean	5.3	5.2	5.1	5.2	5.4	5.3	5.4	5.0	5.3	4.9	5.4	5.3
Std. Deviation	1.68	1.80	1.52	1.52	1.55	1.51	1.53	1.37	1.70	1.67	1.81	1.70
% PO4 3.5 to 5.5	48%	44%	50%	57%	53%	47%	38%	61%	50%	46%	44%	53%

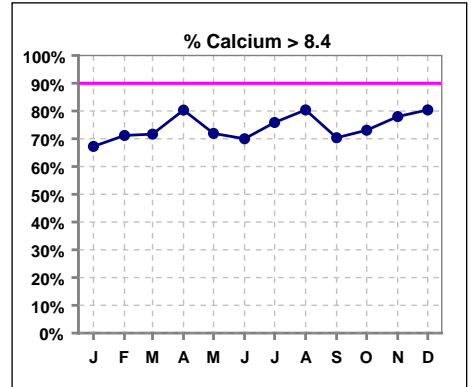


**III. OSTEODYSTROPHY - CONT.**

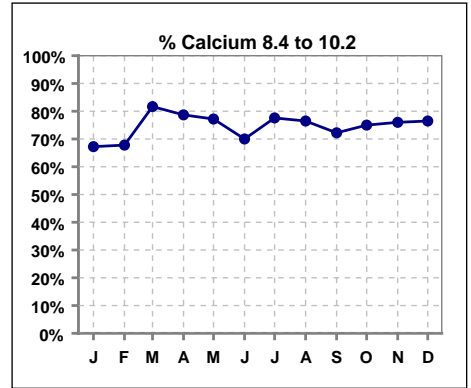
	Jan	Feb	Mar	Apr	May	Jun	Jul	Aug	Sep	Oct	Nov	Dec
# Calcium	58	59	60	61	57	60	58	51	54	52	50	51
# Calcium < 10.2	55	56	60	56	54	57	57	47	49	49	46	49
Pop. Mean	8.9	8.9	8.9	9.0	8.9	8.9	8.9	8.9	9.0	9.0	9.0	9.0
Std. Deviation	0.77	0.78	0.57	0.88	0.72	0.82	0.71	0.85	0.76	0.66	0.80	0.65
<b>% Ca &lt; 10.2</b>	<b>95%</b>	<b>95%</b>	<b>100%</b>	<b>92%</b>	<b>95%</b>	<b>95%</b>	<b>98%</b>	<b>92%</b>	<b>91%</b>	<b>94%</b>	<b>92%</b>	<b>96%</b>



	Jan	Feb	Mar	Apr	May	Jun	Jul	Aug	Sep	Oct	Nov	Dec
# Calcium	58	59	60	61	57	60	58	51	54	52	50	51
# Calcium > 8.4	39	42	43	49	41	42	44	41	38	38	39	41
Pop. Mean	8.9	8.9	8.9	9.0	8.9	8.9	8.9	8.9	9.0	9.0	9.0	9.0
Std. Deviation	0.77	0.78	0.57	0.88	0.72	0.82	0.71	0.85	0.76	0.66	0.80	0.65
<b>% Calcium &gt; 8.4</b>	<b>67%</b>	<b>71%</b>	<b>72%</b>	<b>80%</b>	<b>72%</b>	<b>70%</b>	<b>76%</b>	<b>80%</b>	<b>70%</b>	<b>73%</b>	<b>78%</b>	<b>80%</b>

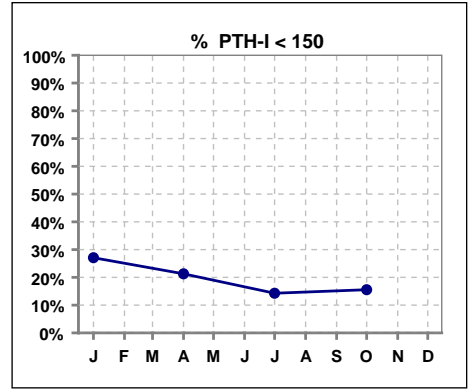


	Jan	Feb	Mar	Apr	May	Jun	Jul	Aug	Sep	Oct	Nov	Dec
# Calcium	58	59	60	61	57	60	58	51	54	52	50	51
# Calcium 8.4 to 10.2	39	40	49	48	44	42	45	39	39	39	38	39
Pop. Mean	8.9	8.9	8.9	9.0	8.9	8.9	8.9	8.9	9.0	9.0	9.0	9.0
Std. Deviation	0.77	0.78	0.57	0.88	0.72	0.82	0.71	0.85	0.76	0.66	0.80	0.65
<b>% Calcium 8.4 to 10.2</b>	<b>67%</b>	<b>68%</b>	<b>82%</b>	<b>79%</b>	<b>77%</b>	<b>70%</b>	<b>78%</b>	<b>76%</b>	<b>72%</b>	<b>75%</b>	<b>76%</b>	<b>76%</b>

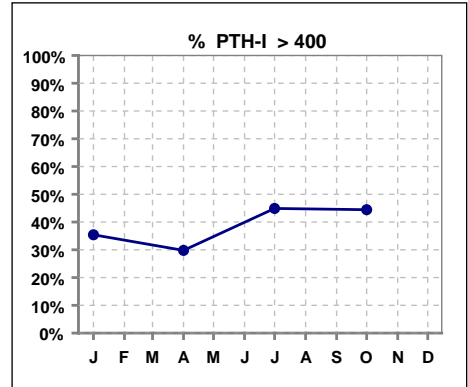


**III. OSTEODYSTROPHY - CONT.**

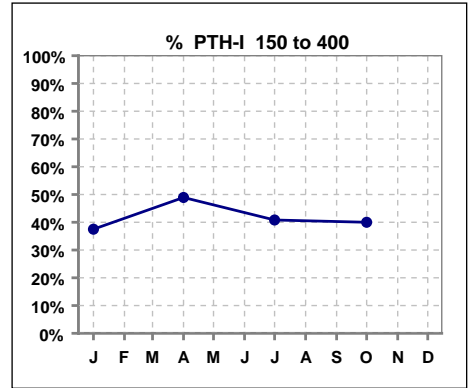
	Jan	Feb	Mar	Apr	May	Jun	Jul	Aug	Sep	Oct	Nov	Dec
# PTH-I	48			47			49			45		
# PTH-I < 150	13			10			7			7		
Pop. Mean	407			359			472			515		
Std. Deviation	344			264			377			514		
<b>% PTH-I &lt; 150</b>	<b>27%</b>			<b>21%</b>			<b>14%</b>			<b>16%</b>		



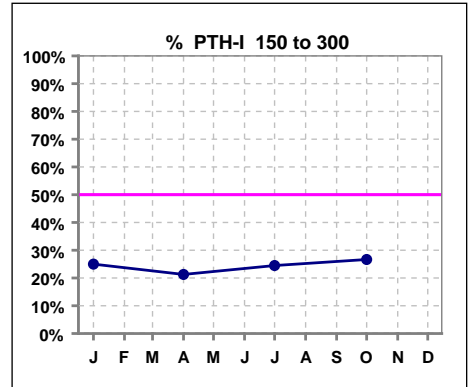
	Jan	Feb	Mar	Apr	May	Jun	Jul	Aug	Sep	Oct	Nov	Dec
# PTH-I	48			47			49			45		
# PTH-I > 400	17			14			22			20		
Pop. Mean	407			359			472			515		
Std. Deviation	344			264			377			514		
<b>% PTH-I &gt; 400</b>	<b>35%</b>			<b>30%</b>			<b>45%</b>			<b>44%</b>		



	Jan	Feb	Mar	Apr	May	Jun	Jul	Aug	Sep	Oct	Nov	Dec
# PTH-I	48			47			49			45		
# PTH-I 150 to 400	18			23			20			18		
Pop. Mean	407			359			472			515		
Std. Deviation	344			264			377			514		
<b>% PTH-I 150 to 400</b>	<b>38%</b>			<b>49%</b>			<b>41%</b>			<b>40%</b>		

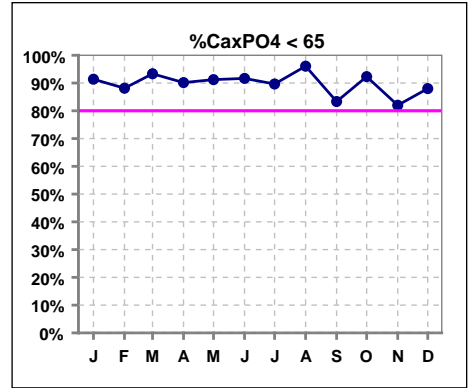


	Jan	Feb	Mar	Apr	May	Jun	Jul	Aug	Sep	Oct	Nov	Dec
# PTH-I	48			47			49			45		
# PTH-I 150 to 300	12			10			12			12		
Pop. Mean	407			359			472			515		
Std. Deviation	344			264			377			514		
<b>% PTH-I 150 to 300</b>	<b>25%</b>			<b>21%</b>			<b>24%</b>			<b>27%</b>		



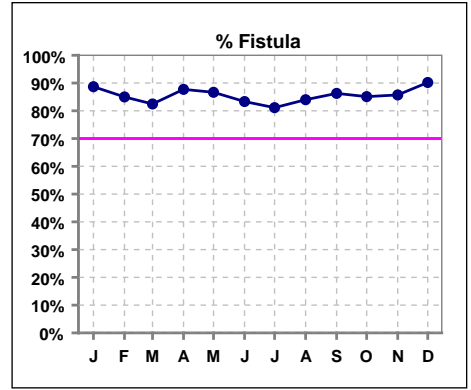
**III. OSTEODYSTROPHY - CONT.**

	Jan	Feb	Mar	Apr	May	Jun	Jul	Aug	Sep	Oct	Nov	Dec
# Ca x PO4	58	59	60	61	57	60	58	51	54	52	50	50
# Ca x PO4 < 65	53	52	56	55	52	55	52	49	45	48	41	44
Pop. Mean	47.1	46.4	44.3	46.5	46.7	47.5	48.4	44.9	48.2	43.9	49.9	47.6
Std. Deviation	15.0	16.0	12.7	12.8	15.1	13.4	14.4	12.8	16.6	16.0	17.7	15.9
<b>% CaxPO4 &lt; 65</b>	<b>91%</b>	<b>88%</b>	<b>93%</b>	<b>90%</b>	<b>91%</b>	<b>92%</b>	<b>90%</b>	<b>96%</b>	<b>83%</b>	<b>92%</b>	<b>82%</b>	<b>88%</b>
<b>% CaxPO4 &lt; 55</b>	<b>71%</b>	<b>75%</b>	<b>85%</b>	<b>77%</b>	<b>77%</b>	<b>68%</b>	<b>74%</b>	<b>80%</b>	<b>70%</b>	<b>81%</b>	<b>62%</b>	<b>76%</b>

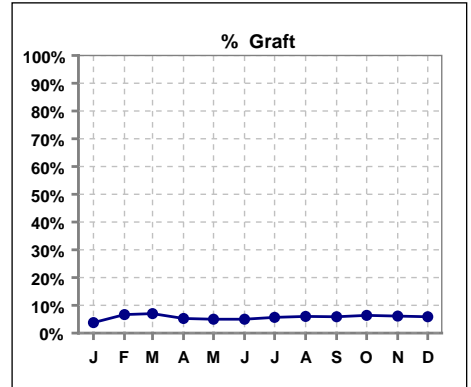


**IV. ACCESS**

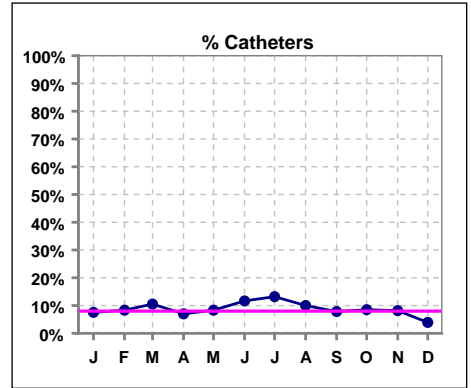
	Jan	Feb	Mar	Apr	May	Jun	Jul	Aug	Sep	Oct	Nov	Dec
<b># Access</b>	53	60	57	57	60	60	53	50	51	47	49	51
<b># Fistula</b>	47	51	47	50	52	50	43	42	44	40	42	46
<b>% Fistula</b>	89%	85%	82%	88%	87%	83%	81%	84%	86%	85%	86%	90%



	Jan	Feb	Mar	Apr	May	Jun	Jul	Aug	Sep	Oct	Nov	Dec
<b># Access</b>	53	60	57	57	60	60	53	50	51	47	49	51
<b># Graft</b>	2	4	4	3	3	3	3	3	3	3	3	3
<b>% Graft</b>	4%	7%	7%	5%	5%	5%	6%	6%	6%	6%	6%	6%



	Jan	Feb	Mar	Apr	May	Jun	Jul	Aug	Sep	Oct	Nov	Dec
<b># Access</b>	53	60	57	57	60	60	53	50	51	47	49	51
<b># Catheters</b>	4	5	6	4	5	7	7	5	4	4	4	2
<b>% Catheters</b>	8%	8%	11%	7%	8%	12%	13%	10%	8%	9%	8%	4%

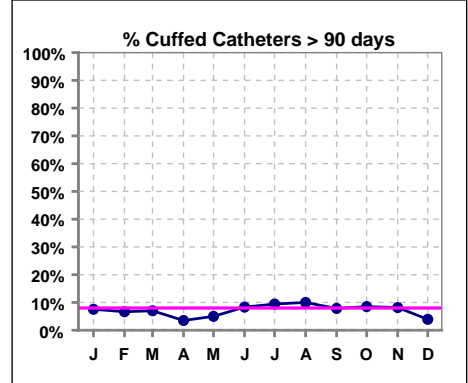




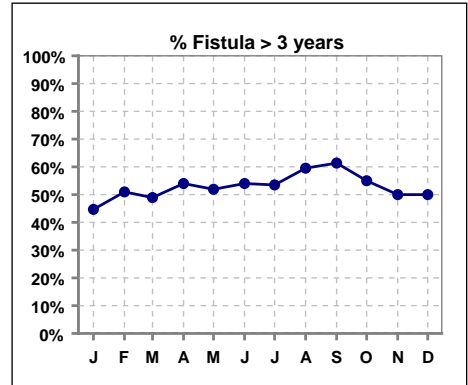
**IV. ACCESS - CONT.**

**Cuffed Catheters > 90 days**

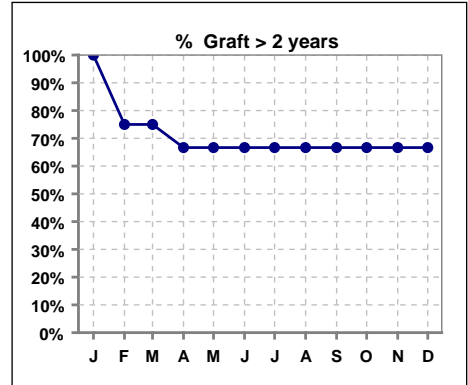
	Jan	Feb	Mar	Apr	May	Jun	Jul	Aug	Sep	Oct	Nov	Dec
<b># Access</b>	53	60	57	57	60	60	53	50	51	47	49	51
<b># Cuffed Catheters</b>	4	4	4	2	3	5	5	5	4	4	4	2
<b>% Cuffed Catheters</b>	8%	7%	7%	4%	5%	8%	9%	10%	8%	9%	8%	4%



	Jan	Feb	Mar	Apr	May	Jun	Jul	Aug	Sep	Oct	Nov	Dec
<b># Fistula</b>	47	51	47	50	52	50	43	42	44	40	42	46
<b># Fistula &gt; 3 yrs</b>	21	26	23	27	27	27	23	25	27	22	21	23
<b>% Fistula &gt; 3 yrs</b>	45%	51%	49%	54%	52%	54%	53%	60%	61%	55%	50%	50%



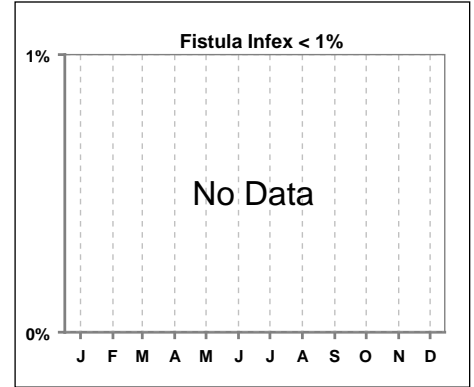
	Jan	Feb	Mar	Apr	May	Jun	Jul	Aug	Sep	Oct	Nov	Dec
<b># Graft</b>	2	4	4	3	3	3	3	3	3	3	3	3
<b># Graft &gt; 2 yrs</b>	2	3	3	2	2	2	2	2	2	2	2	2
<b>% Graft &gt; 2 yrs</b>	100%	75%	75%	67%	67%	67%	67%	67%	67%	67%	67%	67%



**IV. ACCESS - CONT.**

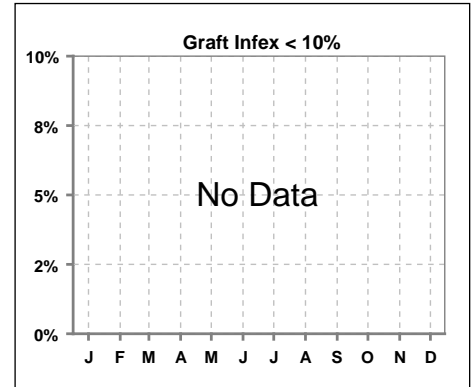
Infection per use-life of access fistula

	Jan	Feb	Mar	Apr	May	Jun	Jul	Aug	Sep	Oct	Nov	Dec
<b>Infex per use-life</b>												



Infection per use-life of access graft

	Jan	Feb	Mar	Apr	May	Jun	Jul	Aug	Sep	Oct	Nov	Dec
<b>Infex per use-life</b>												



Thrombosis Episode - access fistula

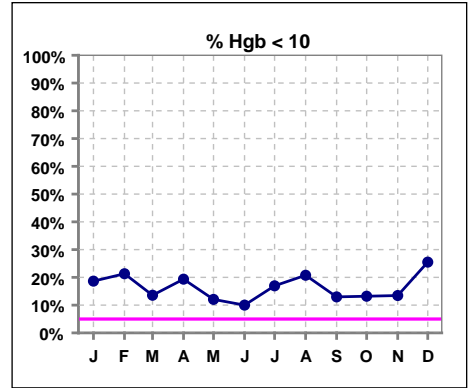
	Jan	Feb	Mar	Apr	May	Jun	Jul	Aug	Sep	Oct	Nov	Dec
Current Month												
Rolling Year-to-date						0.02						

Thrombosis Episode - access graft

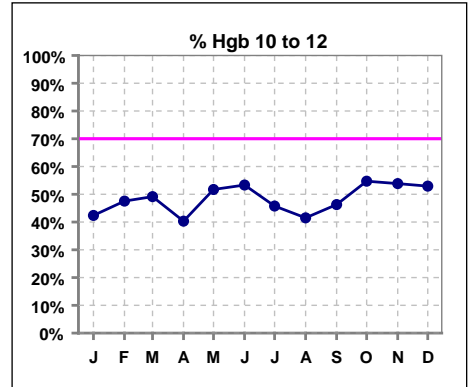
	Jan	Feb	Mar	Apr	May	Jun	Jul	Aug	Sep	Oct	Nov	Dec
Current Month												
Rolling Year-to-date												

**V. ANEMIA**

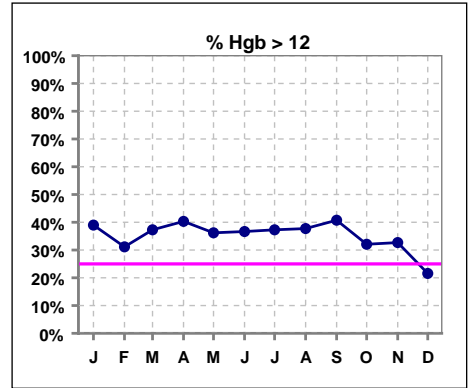
	Jan	Feb	Mar	Apr	May	Jun	Jul	Aug	Sep	Oct	Nov	Dec
# Hgb	59	61	59	62	58	60	59	53	54	53	52	51
# Hgb < 10	11	13	8	12	7	6	10	11	7	7	7	13
Pop. Mean	11.6	11.4	11.8	11.6	11.7	11.5	11.7	11.5	11.4	11.5	11.4	11.0
Std. Deviation	1.6	1.7	1.6	1.7	1.5	1.6	1.8	1.5	1.5	1.4	1.2	1.3
% Hgb < 10	19%	21%	14%	19%	12%	10%	17%	21%	13%	13%	13%	25%



	Jan	Feb	Mar	Apr	May	Jun	Jul	Aug	Sep	Oct	Nov	Dec
# Hgb	59	61	59	62	58	60	59	53	54	53	52	51
# Hgb 10 to 12	25	29	29	25	30	32	27	22	25	29	28	27
Pop. Mean	11.6	11.4	11.8	11.6	11.7	11.5	11.7	11.5	11.4	11.5	11.4	11.0
Std. Deviation	1.6	1.7	1.6	1.7	1.5	1.6	1.8	1.5	1.5	1.4	1.2	1.3
% Hgb 10 to 12	42%	48%	49%	40%	52%	53%	46%	42%	46%	55%	54%	53%



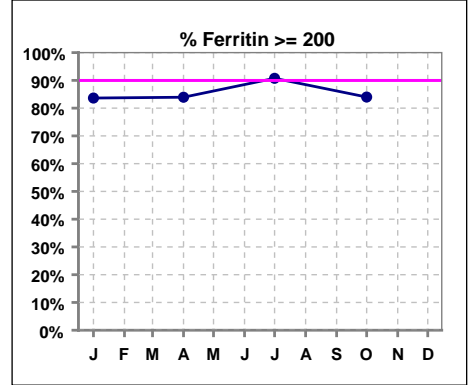
	Jan	Feb	Mar	Apr	May	Jun	Jul	Aug	Sep	Oct	Nov	Dec
# Hgb	59	61	59	62	58	60	59	53	54	53	52	51
# Hgb > 12	23	19	22	25	21	22	22	20	22	17	17	11
Pop. Mean	11.6	11.4	11.8	11.6	11.7	11.5	11.7	11.5	11.4	11.5	11.4	11.0
Std. Deviation	1.6	1.7	1.6	1.7	1.5	1.6	1.8	1.5	1.5	1.4	1.2	1.3
% Hgb > 12	39%	31%	37%	40%	36%	37%	37%	38%	41%	32%	33%	22%



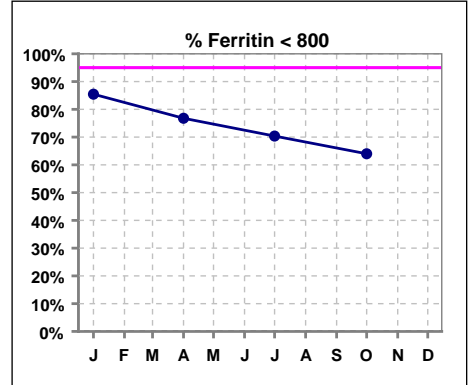
**V. ANEMIA - CONT.**

**Iron Profile**

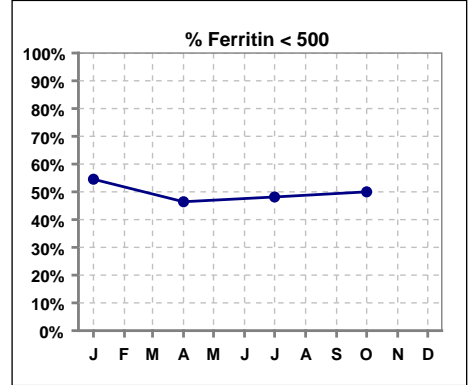
	Jan	Feb	Mar	Apr	May	Jun	Jul	Aug	Sep	Oct	Nov	Dec
# Ferritin	55			56			54			50		
# Ferritin >= 200	46			47			49			42		
Pop. Mean	491			572			617			625		
Std. Deviation	320			360			371			454		
<b>% Ferritin &gt;= 200</b>	<b>84%</b>			<b>84%</b>			<b>91%</b>			<b>84%</b>		



	Jan	Feb	Mar	Apr	May	Jun	Jul	Aug	Sep	Oct	Nov	Dec
# Ferritin	55			56			54			50		
# Ferritin < 800	47			43			38			32		
Pop. Mean	491			572			617			625		
Std. Deviation	320			360			371			454		
<b>% Ferritin &lt; 800</b>	<b>85%</b>			<b>77%</b>			<b>70%</b>			<b>64%</b>		

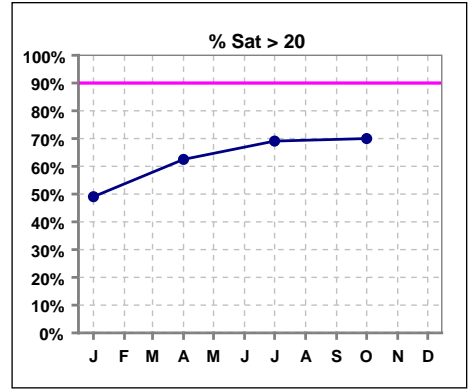


	Jan	Feb	Mar	Apr	May	Jun	Jul	Aug	Sep	Oct	Nov	Dec
# Ferritin	55			56			54			50		
# Ferritin < 500	30			26			26			25		
Pop. Mean	491			572			617			625		
Std. Deviation	320			360			371			454		
<b>% Ferritin &lt; 500</b>	<b>55%</b>			<b>46%</b>			<b>48%</b>			<b>50%</b>		

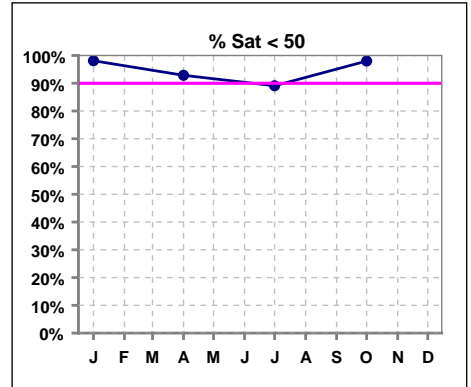


**V. ANEMIA - CONT.**

	Jan	Feb	Mar	Apr	May	Jun	Jul	Aug	Sep	Oct	Nov	Dec
# % Sat	53			56			55			50		
# % Sat > 20	26			35			38			35		
Pop. Mean	23			28			27			27		
Std. Deviation	11			15			15			13		
<b>% Sat% &gt; 20</b>	<b>49%</b>			<b>63%</b>			<b>69%</b>			<b>70%</b>		

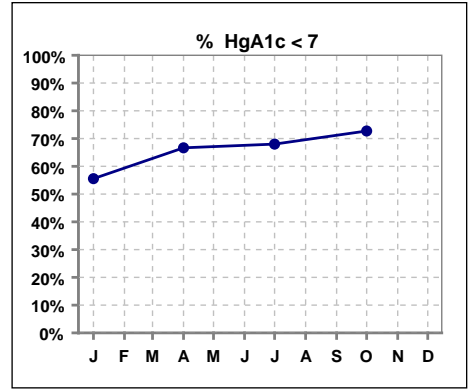


	Jan	Feb	Mar	Apr	May	Jun	Jul	Aug	Sep	Oct	Nov	Dec
# % Sat	53			56			55			50		
# % Sat < 50	52			52			49			49		
Pop. Mean	23			28			27			27		
Std. Deviation	11			15			15			13		
<b>% Sat% &lt; 50</b>	<b>98%</b>			<b>93%</b>			<b>89%</b>			<b>98%</b>		



**VI. Diabetes**

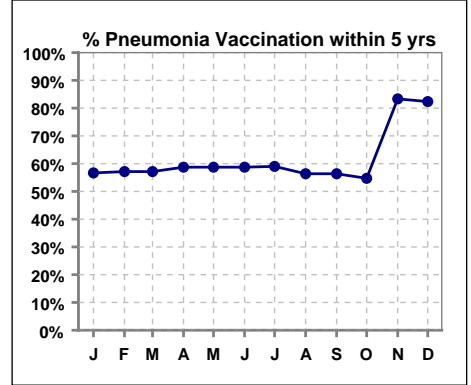
	Jan	Feb	Mar	Apr	May	Jun	Jul	Aug	Sep	Oct	Nov	Dec
# HgA1c	18			21			25			22		
# HgA1c < 7	10			14			17			16		
Pop. Mean	6.4			6.5			6.6			6.6		
Std. Deviation	1.14			1.07			1.00			1.16		
<b>% HgA1c &lt; 7</b>	<b>56%</b>			<b>67%</b>			<b>68%</b>			<b>73%</b>		



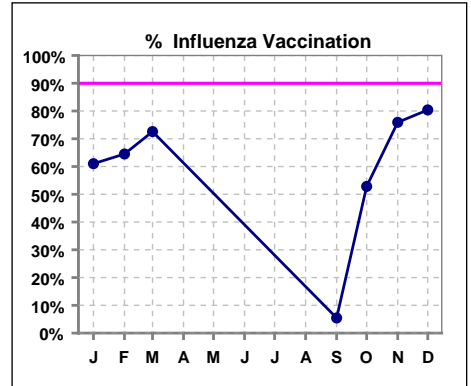
**VII. Infection Control**

**Pneumonia vaccination within the past five years**

	Jan	Feb	Mar	Apr	May	Jun	Jul	Aug	Sep	Oct	Nov	Dec
<b># Patient</b>	60	63	63	63	63	63	61	55	55	53	54	51
<b># Pneumonia</b>	34	36	36	37	37	37	36	31	31	29	45	42
<b>% Pneumonia</b>	57%	57%	57%	59%	59%	59%	59%	56%	56%	55%	83%	82%



	Jan	Feb	Mar	Apr	May	Jun	Jul	Aug	Sep	Oct	Nov	Dec
<b># Patient</b>	59	62	62						55	53	54	51
<b># Influenza</b>	36	40	45						3	28	41	41
<b>% Influenza</b>	61%	65%	73%						5%	53%	76%	80%



Methodology: a) All labs for 'Adequacy of Dialysis', 'Nutrition', 'Osteodystrophy' and 'Anemia' based on last value of month; b) Access data takes last access of month; c) Values for 'Infection Control' uses most recent result.