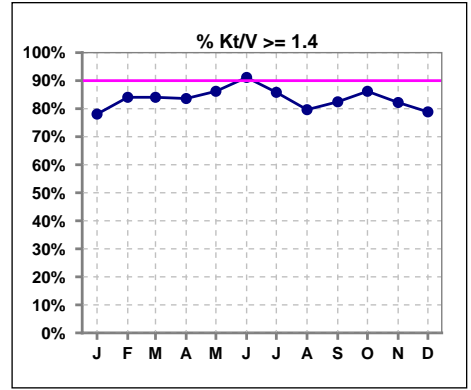
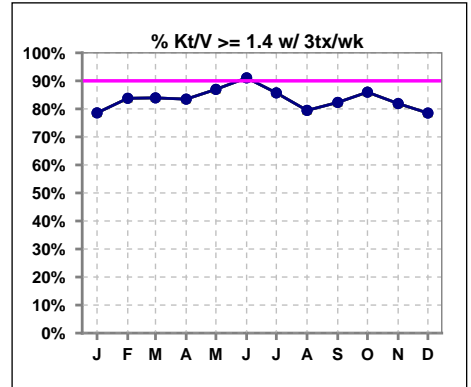


I. ADEQUACY OF DIALYSIS

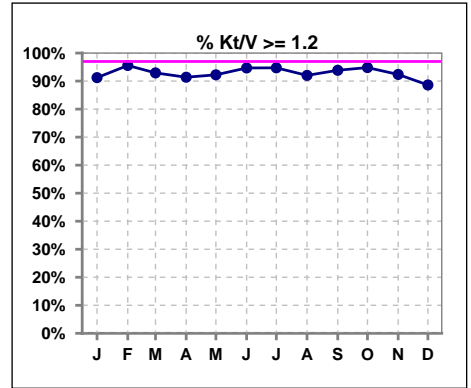
	Jan	Feb	Mar	Apr	May	Jun	Jul	Aug	Sep	Oct	Nov	Dec
# Kt/V	114	113	113	116	116	113	113	113	114	116	118	123
# Kt/V >= 1.4	89	95	95	97	100	103	97	90	94	100	97	97
Pop. Mean	1.60	1.64	1.61	1.63	1.61	1.65	1.64	1.60	1.65	1.66	1.66	1.62
Std. Deviation	0.30	0.28	0.26	0.33	0.27	0.28	0.28	0.30	0.31	0.29	0.36	0.37
% Kt/V >= 1.4	78%	84%	84%	84%	86%	91%	86%	80%	82%	86%	82%	79%



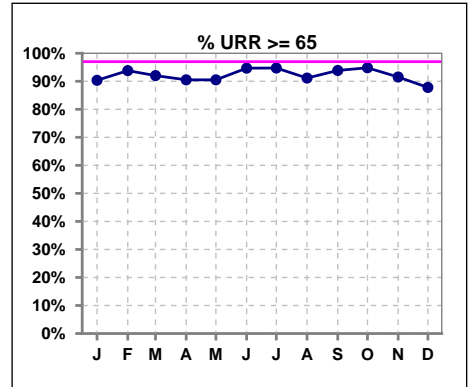
	Jan	Feb	Mar	Apr	May	Jun	Jul	Aug	Sep	Oct	Nov	Dec
# Kt/V w/ 3tx/wk	112	111	112	115	115	112	112	112	113	114	116	121
# Kt/V >= 1.4 w/ 3tx/wk	88	93	94	96	100	102	96	89	93	98	95	95
Pop. Mean	1.60	1.63	1.61	1.63	1.61	1.65	1.63	1.60	1.65	1.66	1.67	1.61
Std. Deviation	0.29	0.27	0.26	0.34	0.27	0.28	0.28	0.30	0.31	0.29	0.36	0.37
% Kt/V >= 1.4 w/ 3tx/wk	79%	84%	84%	83%	87%	91%	86%	79%	82%	86%	82%	79%



	Jan	Feb	Mar	Apr	May	Jun	Jul	Aug	Sep	Oct	Nov	Dec
# Kt/V	114	113	113	116	116	113	114	113	114	116	118	123
# Kt/V >= 1.2	104	108	105	106	107	107	108	104	107	110	109	109
Pop. Mean	1.60	1.64	1.61	1.63	1.61	1.65	1.63	1.60	1.65	1.66	1.66	1.62
Std. Deviation	0.30	0.28	0.26	0.33	0.27	0.28	0.28	0.30	0.31	0.29	0.36	0.37
% Kt/V >= 1.2	91%	96%	93%	91%	92%	95%	95%	92%	94%	95%	92%	89%



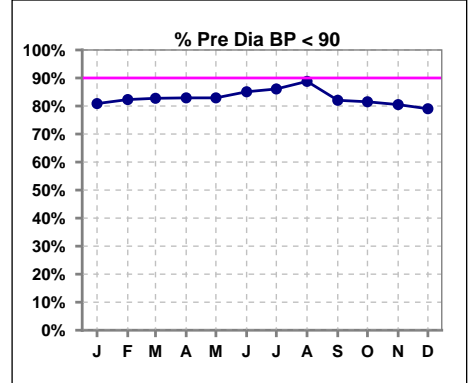
	Jan	Feb	Mar	Apr	May	Jun	Jul	Aug	Sep	Oct	Nov	Dec
# URR	114	113	113	116	116	113	114	113	114	116	118	123
# URR >= 65	103	106	104	105	105	107	108	103	107	110	108	108
Pop. Mean	74	75	74	74	74	75	75	74	75	75	75	74
Std. Deviation	7.34	6.23	5.90	7.00	6.63	5.98	6.11	5.83	6.70	6.80	7.14	8.93
% URR >= 65	90%	94%	92%	91%	91%	95%	95%	91%	94%	95%	92%	88%



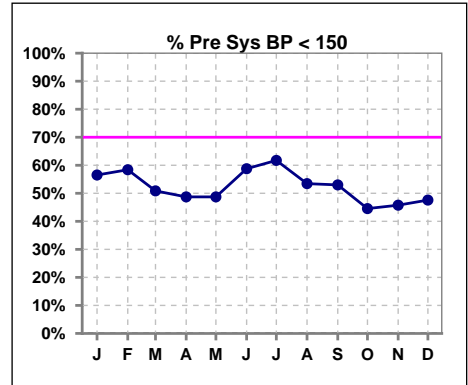
I. ADEQUACY OF DIALYSIS - CONT.

Blood Pressure Control (Pre)

	Jan	Feb	Mar	Apr	May	Jun	Jul	Aug	Sep	Oct	Nov	Dec
# Pre Dia BP	115	113	116	117	117	114	115	116	117	119	118	124
# Pre Dia BP < 90	93	93	96	97	97	97	99	103	96	97	95	98
Pop. Mean	77	79	78	78	77	77	76	76	76	78	79	79
Std. Deviation	14.9	14.0	14.4	13.6	13.4	12.8	13.4	11.7	12.5	13.1	12.8	14.3
% Pre Dia BP < 90	81%	82%	83%	83%	83%	85%	86%	89%	82%	82%	81%	79%



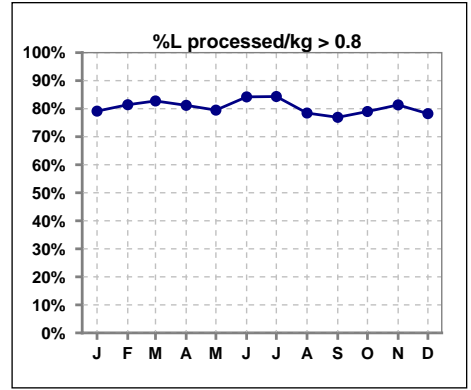
	Jan	Feb	Mar	Apr	May	Jun	Jul	Aug	Sep	Oct	Nov	Dec
# Pre Sys BP	115	113	116	117	117	114	115	116	117	119	118	124
# Pre Sys BP < 150	65	66	59	57	57	67	71	62	62	53	54	59
Pop. Mean	147	148	149	150	148	148	146	147	148	151	152	152
Std. Deviation	21.6	21.7	23.2	21.5	21.1	20.5	22.1	19.6	21.0	21.5	21.2	21.1
%Pre Sys BP <150	57%	58%	51%	49%	49%	59%	62%	53%	53%	45%	46%	48%



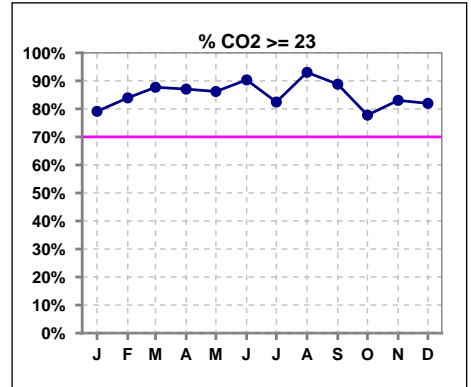
Methodology: a) All labs for 'Adequacy of Dialysis', 'Nutrition', 'Osteodystrophy', 'Anemia' and 'Diabetes' based on last value of month; b) BP's and #L processed are average of all values for month; c) Access data takes last access of month; d) Values for SGA and 'Infection Control' use most recent result.

I. ADEQUACY OF DIALYSIS - CONT.

	Jan	Feb	Mar	Apr	May	Jun	Jul	Aug	Sep	Oct	Nov	Dec
# L processed/kg	115	113	116	117	117	114	115	116	117	119	118	124
# L processed/kg>0.8	91	92	96	95	93	96	97	91	90	94	96	97
Pop. Mean	1	1	1	1	1	1	1	1	1	1	1	1
Std. Deviation	0.3	0.3	0.2	0.3	0.3	0.2	0.2	0.3	0.3	0.3	0.3	0.3
% L processed/kg>0.8	79%	81%	83%	81%	79%	84%	84%	78%	77%	79%	81%	78%



	Jan	Feb	Mar	Apr	May	Jun	Jul	Aug	Sep	Oct	Nov	Dec
# CO2	115	112	114	116	116	114	114	115	116	117	118	122
# CO2 >= 23	91	94	100	101	100	103	94	107	103	91	98	100
Pop. Mean	25	25	26	25	26	25	25	26	25	25	25	25
Std. Deviation	3.21	2.97	2.99	2.94	2.76	2.56	2.62	2.44	2.52	3.15	2.93	3.15
% CO2 >= 23	79%	84%	88%	87%	86%	90%	82%	93%	89%	78%	83%	82%

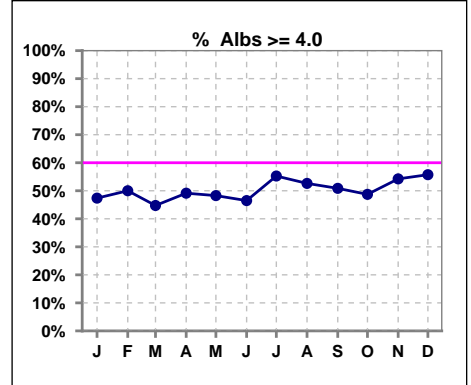


Methodology: a) All labs for 'Adequacy of Dialysis', 'Nutrition', 'Osteodystrophy', 'Anemia' and 'Diabetes' based on last value of month; b) BP's and #L processed are average of all values for month; c) Access data takes last access of month; d) Values for SGA and 'Infection Control' use most recent result.

*Albumin values use BCG method - as of July 2001

II. NUTRITION

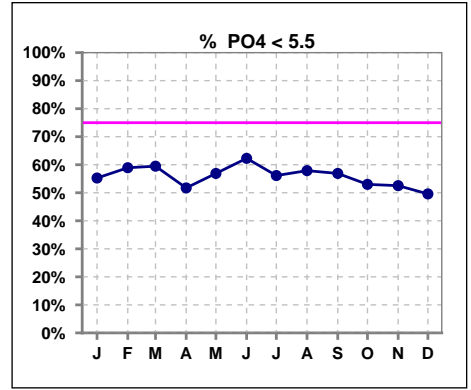
	Jan	Feb	Mar	Apr	May	Jun	Jul	Aug	Sep	Oct	Nov	Dec
# Albumin	114	112	114	116	116	114	114	114	116	117	118	122
# Albumin >= 4.0	54	56	51	57	56	53	63	60	59	57	64	68
Pop. Mean	3.9	3.9	3.9	3.9	3.9	3.9	4.0	3.9	3.9	3.9	3.9	4.0
Std. Deviation	0.39	0.37	0.37	0.37	0.36	0.36	0.37	0.37	0.41	0.37	0.37	0.36
% Alb >= 3.5	90%	91%	88%	91%	91%	93%	89%	90%	90%	90%	90%	89%
% Alb >= 3.0	98%	99%	99%	98%	98%	98%	99%	99%	97%	98%	99%	100%
% Alb >= 4.0	47%	50%	45%	49%	48%	46%	55%	53%	51%	49%	54%	56%



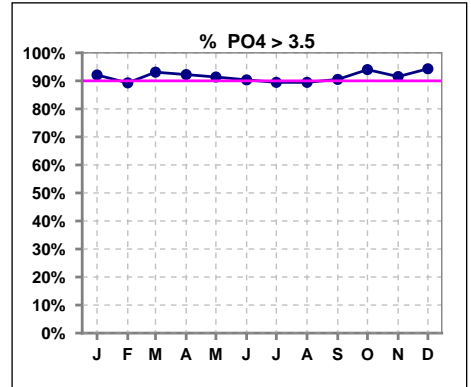
Methodology: a) All labs for 'Adequacy of Dialysis', 'Nutrition', 'Osteodystrophy', 'Anemia' and 'Diabetes' based on last value of month; b) BP's and #L processed are average of all values for month; c) Access data takes last access of month; d) Values for SGA and 'Infection Control' use most recent result.

III. OSTEODYSTROPHY

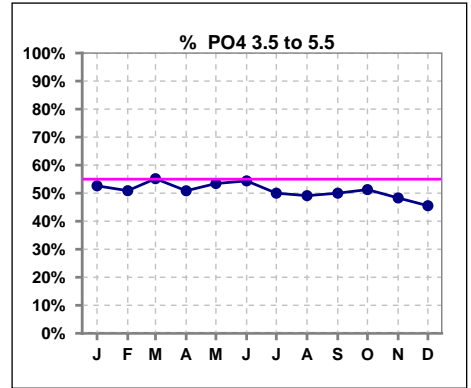
	Jan	Feb	Mar	Apr	May	Jun	Jul	Aug	Sep	Oct	Nov	Dec
# PO4	114	112	116	116	116	114	114	114	116	117	118	123
# PO4 < 5.5	63	66	69	60	66	71	64	66	66	62	62	61
Pop. Mean	5.3	5.4	5.3	5.4	5.3	5.2	5.5	5.3	5.3	5.4	5.3	5.5
Std. Deviation	1.41	1.61	1.56	1.39	1.42	1.44	1.69	1.55	1.41	1.42	1.39	1.56
% PO4 < 5.5	55%	59%	59%	52%	57%	62%	56%	58%	57%	53%	53%	50%



	Jan	Feb	Mar	Apr	May	Jun	Jul	Aug	Sep	Oct	Nov	Dec
# PO4	114	112	116	116	116	114	114	114	116	117	118	123
# PO4 > 3.5	105	100	108	107	106	103	102	102	105	110	108	116
Pop. Mean	5.3	5.4	5.3	5.4	5.3	5.2	5.5	5.3	5.3	5.4	5.3	5.5
Std. Deviation	1.41	1.61	1.56	1.39	1.42	1.44	1.69	1.55	1.41	1.42	1.39	1.56
% PO4 > 3.5	92%	89%	93%	92%	91%	90%	89%	89%	91%	94%	92%	94%



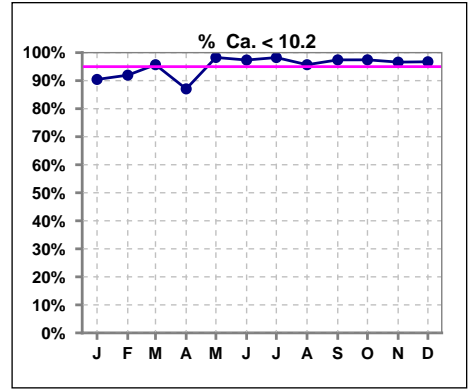
	Jan	Feb	Mar	Apr	May	Jun	Jul	Aug	Sep	Oct	Nov	Dec
# PO4	114	112	116	116	116	114	114	114	116	117	118	123
# PO4 3.5 to 5.5	60	57	64	59	62	62	57	56	58	60	57	56
Pop. Mean	5.3	5.4	5.3	5.4	5.3	5.2	5.5	5.3	5.3	5.4	5.3	5.5
Std. Deviation	1.41	1.61	1.56	1.39	1.42	1.44	1.69	1.55	1.41	1.42	1.39	1.56
% PO4 3.5 to 5.5	53%	51%	55%	51%	53%	54%	50%	49%	50%	51%	48%	46%



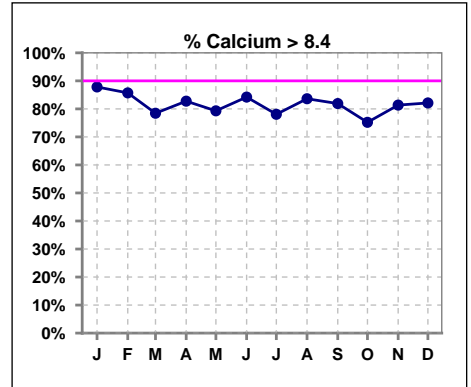
Methodology: a) All labs for 'Adequacy of Dialysis', 'Nutrition', 'Osteodystrophy', 'Anemia' and 'Diabetes' based on last value of month; b) BP's and #L processed are average of all values for month; c) Access data takes last access of month; d) Values for SGA and 'Infection Control' use most recent result.

III. OSTEODYSTROPHY - CONT.

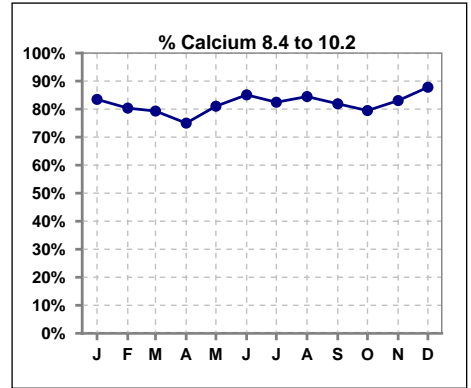
	Jan	Feb	Mar	Apr	May	Jun	Jul	Aug	Sep	Oct	Nov	Dec
# Calcium	115	112	116	116	116	114	114	116	116	117	118	123
# Calcium < 10.2	104	103	111	101	114	111	112	111	113	114	114	119
Pop. Mean	9.2	9.2	9.0	9.1	9.0	9.1	8.9	9.0	9.0	9.0	9.0	9.1
Std. Deviation	0.84	0.82	0.74	0.89	0.78	0.75	0.80	0.85	0.76	0.76	0.75	0.75
% Ca < 10.2	90%	92%	96%	87%	98%	97%	98%	96%	97%	97%	97%	97%



	Jan	Feb	Mar	Apr	May	Jun	Jul	Aug	Sep	Oct	Nov	Dec
# Calcium	115	112	116	116	116	114	114	116	116	117	118	123
# Calcium > 8.4	101	96	91	96	92	96	89	97	95	88	96	101
Pop. Mean	9.2	9.2	9.0	9.1	9.0	9.1	8.9	9.0	9.0	9.0	9.0	9.1
Std. Deviation	0.84	0.82	0.74	0.89	0.78	0.75	0.80	0.85	0.76	0.76	0.75	0.75
% Calcium > 8.4	88%	86%	78%	83%	79%	84%	78%	84%	82%	75%	81%	82%



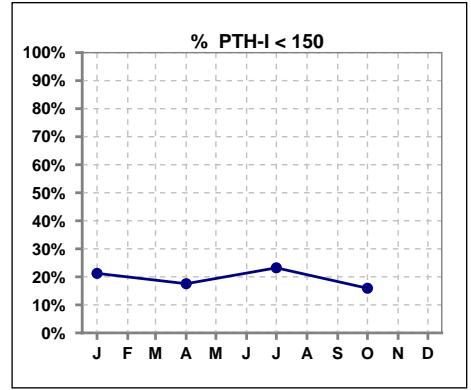
	Jan	Feb	Mar	Apr	May	Jun	Jul	Aug	Sep	Oct	Nov	Dec
# Calcium	115	112	116	116	116	114	114	116	116	117	118	123
# Calcium 8.4 to 10.2	96	90	92	87	94	97	94	98	95	93	98	108
Pop. Mean	9.2	9.2	9.0	9.1	9.0	9.1	8.9	9.0	9.0	9.0	9.0	9.1
Std. Deviation	0.84	0.82	0.74	0.89	0.78	0.75	0.80	0.85	0.76	0.76	0.75	0.75
% Calcium 8.4 to 10.2	83%	80%	79%	75%	81%	85%	82%	84%	82%	79%	83%	88%



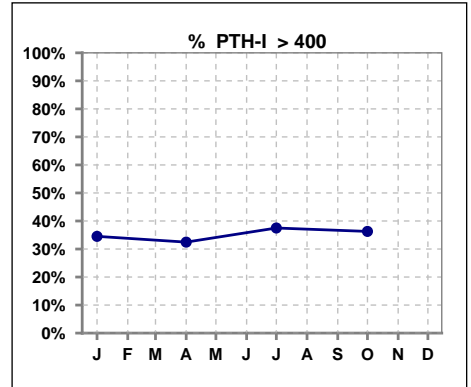
Methodology: a) All labs for 'Adequacy of Dialysis', 'Nutrition', 'Osteodystrophy', 'Anemia' and 'Diabetes' based on last value of month; b) BP's and #L processed are average of all values for month; c) Access data takes last access of month; d) Values for SGA and 'Infection Control' use most recent result.

III. OSTEODYSTROPHY - CONT.

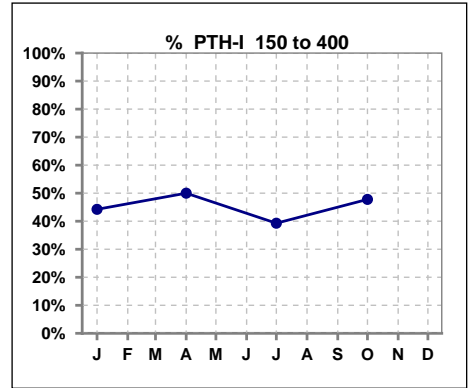
	Jan	Feb	Mar	Apr	May	Jun	Jul	Aug	Sep	Oct	Nov	Dec
# PTH-I	113			114			112			113		
# PTH-I < 150	24			20			26			18		
Pop. Mean	415			400			405			436		
Std. Deviation	377			349			325			363		
% PTH-I < 150	21%			18%			23%			16%		



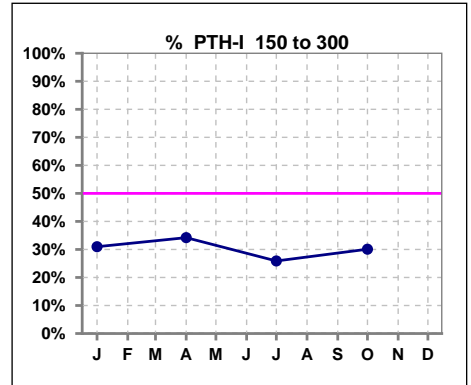
	Jan	Feb	Mar	Apr	May	Jun	Jul	Aug	Sep	Oct	Nov	Dec
# PTH-I	113			114			112			113		
# PTH-I > 400	39			37			42			41		
Pop. Mean	415			400			405			436		
Std. Deviation	377			349			325			363		
% PTH-I > 400	35%			32%			38%			36%		



	Jan	Feb	Mar	Apr	May	Jun	Jul	Aug	Sep	Oct	Nov	Dec
# PTH-I	113			114			112			113		
# PTH-I 150 to 400	50			57			44			54		
Pop. Mean	415			400			405			436		
Std. Deviation	377			349			325			363		
% PTH-I 150 to 400	44%			50%			39%			48%		



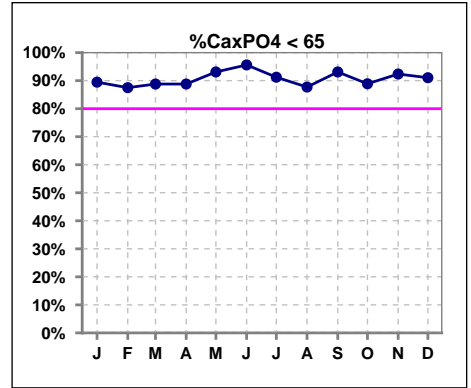
	Jan	Feb	Mar	Apr	May	Jun	Jul	Aug	Sep	Oct	Nov	Dec
# PTH-I	113			114			112			113		
# PTH-I 150 to 300	35			39			29			34		
Pop. Mean	415			400			405			436		
Std. Deviation	377			349			325			363		
% PTH-I 150 to 300	31%			34%			26%			30%		



Methodology: a) All labs for 'Adequacy of Dialysis', 'Nutrition', 'Osteodystrophy', 'Anemia' and 'Diabetes' based on last value of month; b) BP's and #L processed are average of all values for month; c) Access data takes last access of month; d) Values for SGA and 'Infection Control' use most recent result.

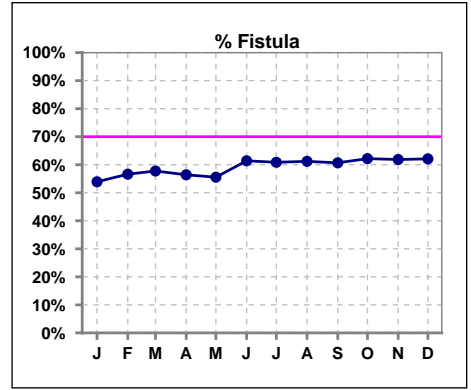
III. OSTEODYSTROPHY - CONT.

	Jan	Feb	Mar	Apr	May	Jun	Jul	Aug	Sep	Oct	Nov	Dec
# Ca x PO4	114	112	116	116	116	114	114	114	116	117	118	123
# Ca x PO4 < 65	102	98	103	103	108	109	104	100	108	104	109	112
Pop. Mean	48.9	49.0	47.7	49.5	47.7	46.8	49.1	47.5	47.2	48.4	47.4	50.0
Std. Deviation	13.5	14.8	14.8	13.8	12.5	13.3	14.4	14.8	13.1	13.3	12.8	14.6
% CaxPO4 < 65	89%	88%	89%	89%	93%	96%	91%	88%	93%	89%	92%	91%

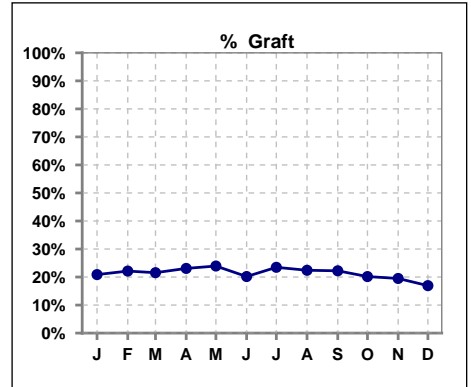


IV. ACCESS

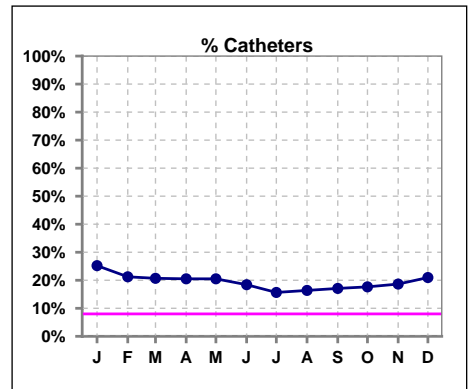
	Jan	Feb	Mar	Apr	May	Jun	Jul	Aug	Sep	Oct	Nov	Dec
# Access	115	113	116	117	117	114	115	116	117	119	118	124
# Fistula	62	64	67	66	65	70	70	71	71	74	73	77
% Fistula	54%	57%	58%	56%	56%	61%	61%	61%	61%	62%	62%	62%



	Jan	Feb	Mar	Apr	May	Jun	Jul	Aug	Sep	Oct	Nov	Dec
# Access	115	113	116	117	117	114	115	116	117	119	118	124
# Graft	24	25	25	27	28	23	27	26	26	24	23	21
% Graft	21%	22%	22%	23%	24%	20%	23%	22%	22%	20%	19%	17%



	Jan	Feb	Mar	Apr	May	Jun	Jul	Aug	Sep	Oct	Nov	Dec
# Access	115	113	116	117	117	114	115	116	117	119	118	124
# Catheters	29	24	24	24	24	21	18	19	20	21	22	26
% Catheters	25%	21%	21%	21%	21%	18%	16%	16%	17%	18%	19%	21%

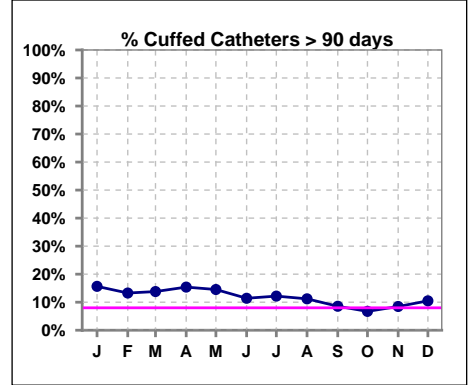


Methodology: a) All labs for 'Adequacy of Dialysis', 'Nutrition', 'Osteodystrophy', 'Anemia' and 'Diabetes' based on last value of month; b) BP's and #L processed are average of all values for month; c) Access data takes last access of month; d) Values for SGA and 'Infection Control' use most recent result.

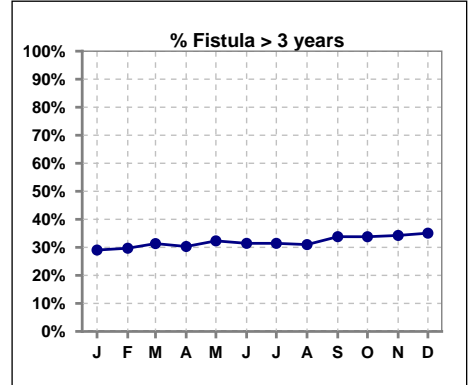
IV. ACCESS - CONT.

Cuffed Catheters > 90 days

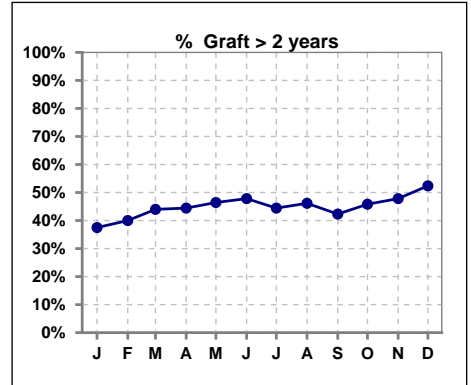
	Jan	Feb	Mar	Apr	May	Jun	Jul	Aug	Sep	Oct	Nov	Dec
# Access	115	113	116	117	117	114	115	116	117	119	118	124
# Cuffed Catheters	18	15	16	18	17	13	14	13	10	8	10	13
% Cuffed Catheters	16%	13%	14%	15%	15%	11%	12%	11%	9%	7%	8%	10%



	Jan	Feb	Mar	Apr	May	Jun	Jul	Aug	Sep	Oct	Nov	Dec
# Fistula	62	64	67	66	65	70	70	71	71	74	73	77
# Fistula > 3 yrs	18	19	21	20	21	22	22	22	24	25	25	27
% Fistula > 3 yrs	29%	30%	31%	30%	32%	31%	31%	31%	34%	34%	34%	35%



	Jan	Feb	Mar	Apr	May	Jun	Jul	Aug	Sep	Oct	Nov	Dec
# Graft	24	25	25	27	28	23	27	26	26	24	23	21
# Graft > 2 yrs	9	10	11	12	13	11	12	12	11	11	11	11
% Graft > 2 yrs	38%	40%	44%	44%	46%	48%	44%	46%	42%	46%	48%	52%

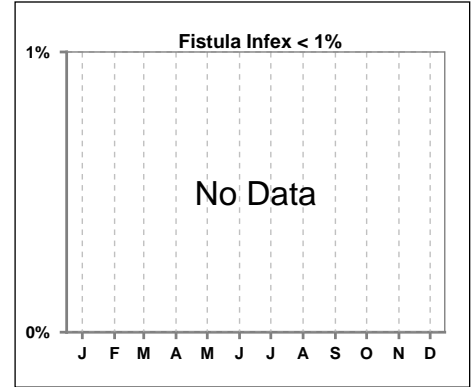


Methodology: a) All labs for 'Adequacy of Dialysis', 'Nutrition', 'Osteodystrophy', 'Anemia' and 'Diabetes' based on last value of month; b) BP's and #L processed are average of all values for month; c) Access data takes last access of month; d) Values for SGA and 'Infection Control' use most recent result.

IV. ACCESS - CONT.

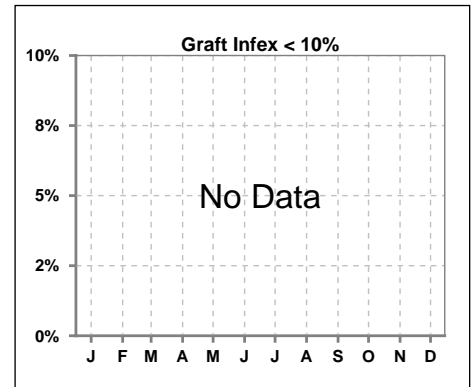
Infection per use-life of access fistula

	Jan	Feb	Mar	Apr	May	Jun	Jul	Aug	Sep	Oct	Nov	Dec
Infex per use-life												



Infection per use-life of access graft

	Jan	Feb	Mar	Apr	May	Jun	Jul	Aug	Sep	Oct	Nov	Dec
Infex per use-life												



Thrombosis Episode - access fistula

	Jan	Feb	Mar	Apr	May	Jun	Jul	Aug	Sep	Oct	Nov	Dec
Current Month												
Rolling Year-to-date												

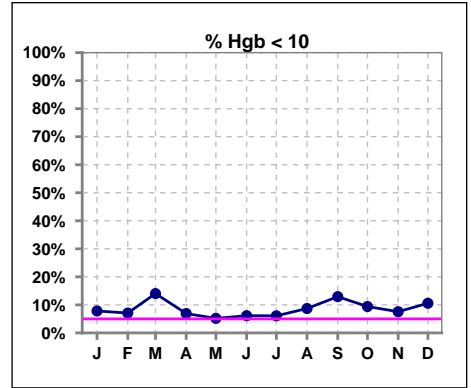
Thrombosis Episode - access graft

	Jan	Feb	Mar	Apr	May	Jun	Jul	Aug	Sep	Oct	Nov	Dec
Current Month											0.08	
Rolling Year-to-date											0.01	0.01

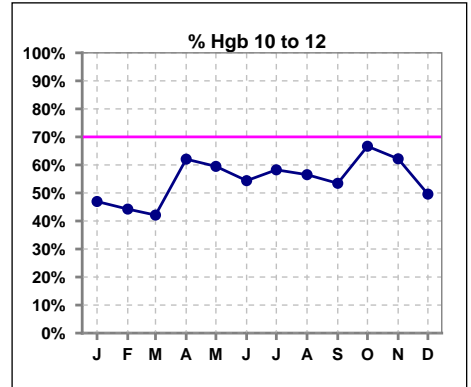
Methodology: a) All labs for 'Adequacy of Dialysis', 'Nutrition', 'Osteodystrophy', 'Anemia' and 'Diabetes' based on last value of month; b) BP's and #L processed are average of all values for month; c) Access data takes last access of month; d) Values for SGA and 'Infection Control' use most recent result.

V. ANEMIA

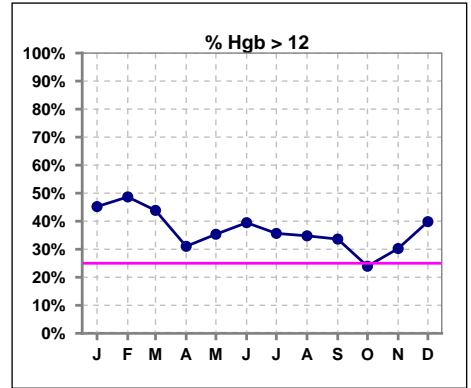
	Jan	Feb	Mar	Apr	May	Jun	Jul	Aug	Sep	Oct	Nov	Dec
# Hgb	115	113	114	116	116	114	115	115	116	117	119	123
# Hgb < 10	9	8	16	8	6	7	7	10	15	11	9	13
Pop. Mean	11.9	11.8	11.7	11.6	11.7	11.6	11.6	11.5	11.5	11.4	11.5	11.5
Std. Deviation	1.3	1.2	1.3	1.1	1.0	1.1	1.2	1.2	1.3	1.1	1.1	1.2
% Hgb < 10	8%	7%	14%	7%	5%	6%	6%	9%	13%	9%	8%	11%



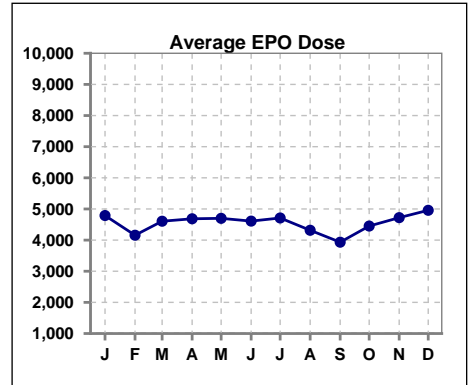
	Jan	Feb	Mar	Apr	May	Jun	Jul	Aug	Sep	Oct	Nov	Dec
# Hgb	115	113	114	116	116	114	115	115	116	117	119	123
# Hgb 10 to 12	54	50	48	72	69	62	67	65	62	78	74	61
Pop. Mean	11.9	11.8	11.7	11.6	11.7	11.6	11.6	11.5	11.5	11.4	11.5	11.5
Std. Deviation	1.3	1.2	1.3	1.1	1.0	1.1	1.2	1.2	1.3	1.1	1.1	1.2
% Hgb 10 to 12	47%	44%	42%	62%	59%	54%	58%	57%	53%	67%	62%	50%



	Jan	Feb	Mar	Apr	May	Jun	Jul	Aug	Sep	Oct	Nov	Dec
# Hgb	115	113	114	116	116	114	115	115	116	117	119	123
# Hgb > 12	52	55	50	36	41	45	41	40	39	28	36	49
Pop. Mean	11.9	11.8	11.7	11.6	11.7	11.6	11.6	11.5	11.5	11.4	11.5	11.5
Std. Deviation	1.3	1.2	1.3	1.1	1.0	1.1	1.2	1.2	1.3	1.1	1.1	1.2
% Hgb > 12	45%	49%	44%	31%	35%	39%	36%	35%	34%	24%	30%	40%



	Jan	Feb	Mar	Apr	May	Jun	Jul	Aug	Sep	Oct	Nov	Dec
# Average EPO Dose	4789	4156	4607	4685	4699	4610	4711	4316	3933	4451	4721	4957

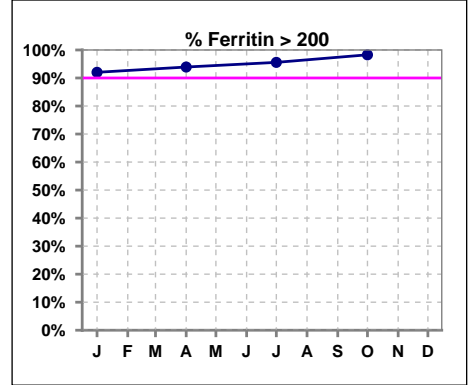


Methodology: a) All labs for 'Adequacy of Dialysis', 'Nutrition', 'Osteodystrophy', 'Anemia' and 'Diabetes' based on last value of month; b) BP's and #L processed are average of all values for month; c) Access data takes last access of month; d) Values for SGA and 'Infection Control' use most recent result.

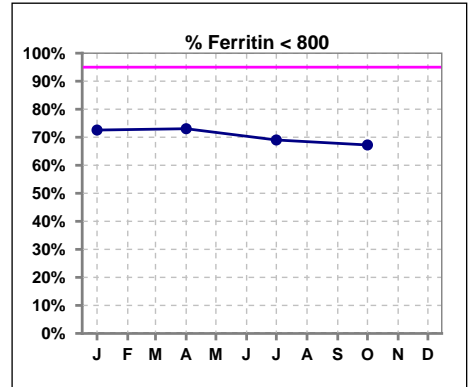
V. ANEMIA - CONT.

Iron Profile

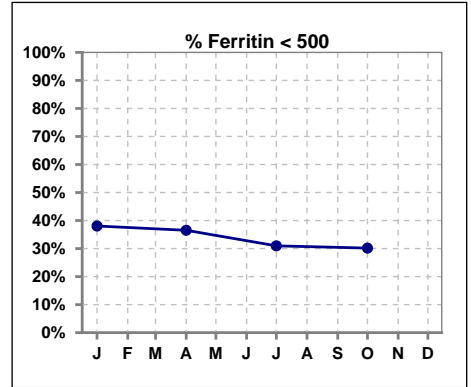
	Jan	Feb	Mar	Apr	May	Jun	Jul	Aug	Sep	Oct	Nov	Dec
# Ferritin	113			115			113			116		
# Ferritin > 200	104			108			108			114		
Pop. Mean	618			634			655			697		
Std. Deviation	301			363			310			366		
% Ferritin > 200	92%			94%			96%			98%		



	Jan	Feb	Mar	Apr	May	Jun	Jul	Aug	Sep	Oct	Nov	Dec
# Ferritin	113			115			113			116		
# Ferritin < 800	82			84			78			78		
Pop. Mean	618			634			655			697		
Std. Deviation	301			363			310			366		
% Ferritin < 800	73%			73%			69%			67%		

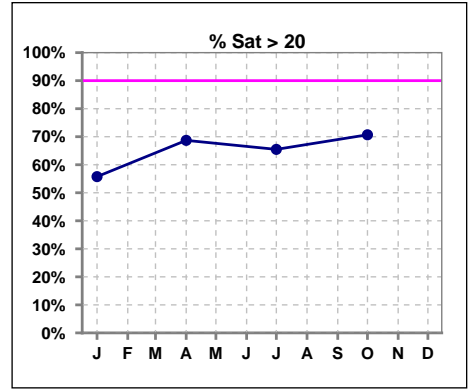


	Jan	Feb	Mar	Apr	May	Jun	Jul	Aug	Sep	Oct	Nov	Dec
# Ferritin	113			115			113			116		
# Ferritin < 500	43			42			35			35		
Pop. Mean	618			634			655			697		
Std. Deviation	301			363			310			366		
% Ferritin < 500	38%			37%			31%			30%		

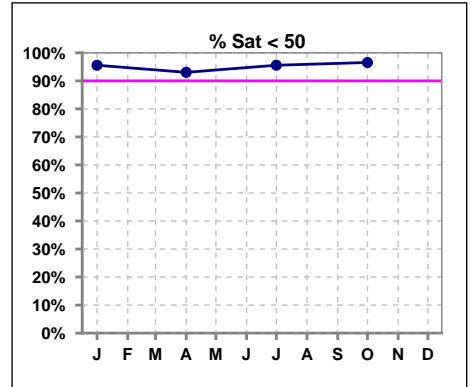


V. ANEMIA - CONT.

	Jan	Feb	Mar	Apr	May	Jun	Jul	Aug	Sep	Oct	Nov	Dec
# % Sat	113			115			113			116		
# % Sat > 20	63			79			74			82		
Pop. Mean	25			28			27			27		
Std. Deviation	12			13			13			11		
% Sat% > 20	56%			69%			65%			71%		



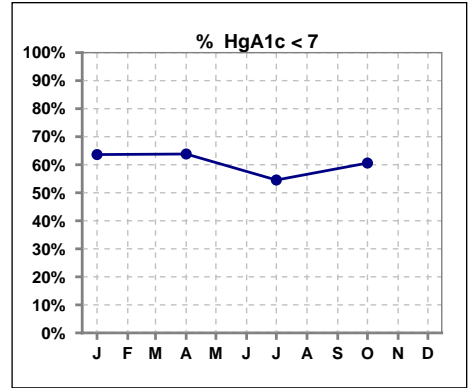
	Jan	Feb	Mar	Apr	May	Jun	Jul	Aug	Sep	Oct	Nov	Dec
# % Sat	113			115			113			116		
# % Sat < 50	108			107			108			112		
Pop. Mean	25			28			27			27		
Std. Deviation	12			13			13			11		
% Sat% < 50	96%			93%			96%			97%		



Methodology: a) All labs for 'Adequacy of Dialysis', 'Nutrition', 'Osteodystrophy', 'Anemia' and 'Diabetes' based on last value of month; b) BP's and #L processed are average of all values for month; c) Access data takes last access of month; d) Values for SGA and 'Infection Control' use most recent result.

VI. Diabetes

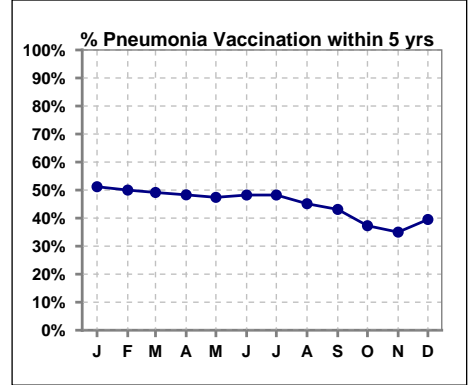
	Jan	Feb	Mar	Apr	May	Jun	Jul	Aug	Sep	Oct	Nov	Dec
# HgA1c	55			47			55			66		
# HgA1c < 7	35			30			30			40		
Pop. Mean	6.8			7.1			7.0			6.9		
Std. Deviation	1.56			1.73			1.54			1.64		
% HgA1c < 7	64%			64%			55%			61%		



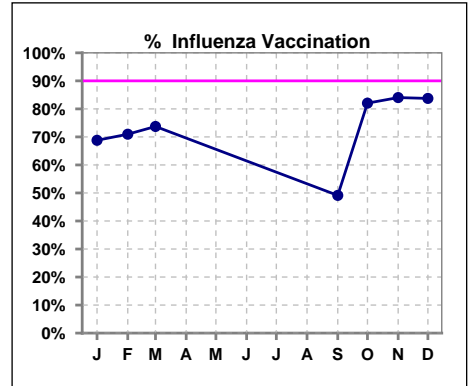
VII. Infection Control

Pneumonia vaccination within the past five years

	Jan	Feb	Mar	Apr	May	Jun	Jul	Aug	Sep	Oct	Nov	Dec
# Patient	125	124	118	118	116	114	114	113	116	118	120	124
# Pneumonia	64	62	58	57	55	55	55	51	50	44	42	49
% Pneumonia	51%	50%	49%	48%	47%	48%	48%	45%	43%	37%	35%	40%



	Jan	Feb	Mar	Apr	May	Jun	Jul	Aug	Sep	Oct	Nov	Dec
# Patient	125	124	118						116	117	119	123
# Influenza	86	88	87						57	96	100	103
% Influenza	69%	71%	74%						49%	82%	84%	84%



Methodology: a) All labs for 'Adequacy of Dialysis', 'Nutrition', 'Osteodystrophy', 'Anemia' and 'Diabetes' based on last value of month; b) BP's and #L processed are average of all values for month; c) Access data takes last access of month; d) Values for SGA and 'Infection Control' use most recent result.