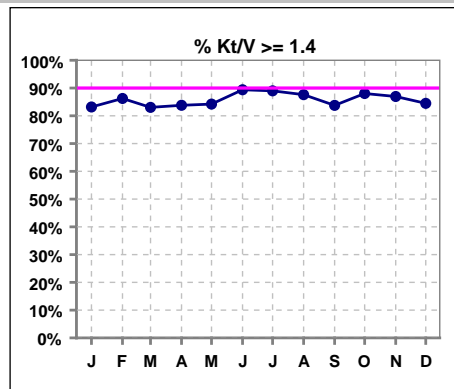
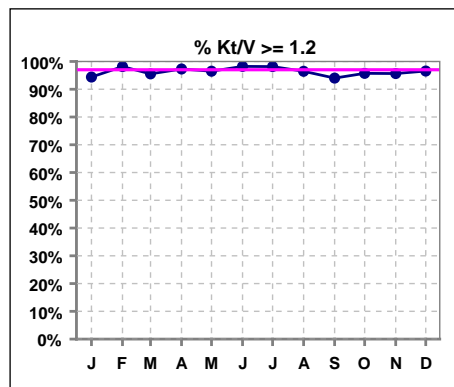


**I. ADEQUACY OF DIALYSIS**

	Jan	Feb	Mar	Apr	May	Jun	Jul	Aug	Sep	Oct	Nov	Dec
# Kt/V	107	109	112	111	114	113	109	113	117	117	115	116
# Kt/V >= 1.4	89	94	93	93	96	101	97	99	98	103	100	98
Pop. Mean	1.61	1.62	1.63	1.65	1.63	1.67	1.69	1.65	1.64	1.67	1.65	1.62
Std. Deviation	0.26	0.26	0.26	0.31	0.26	0.28	0.29	0.35	0.28	0.38	0.24	0.26
Network Mean '04	1.59	1.59	1.59	1.59	1.59	1.59	1.59	1.59	1.59	1.59	1.59	1.59
Natl. Mean '06	1.55	1.55	1.55	1.55	1.55	1.55	1.55	1.55	1.55	1.55	1.55	1.55
<b>% Kt/V &gt;= 1.4</b>	<b>83%</b>	<b>86%</b>	<b>83%</b>	<b>84%</b>	<b>84%</b>	<b>89%</b>	<b>89%</b>	<b>88%</b>	<b>84%</b>	<b>88%</b>	<b>87%</b>	<b>84%</b>
Network % >= 1.2 '06	89%	89%	89%	89%	89%	89%	89%	89%	89%	89%	89%	89%
Natl. % >= 1.2 '06	90%	90%	90%	90%	90%	90%	90%	90%	90%	90%	90%	90%

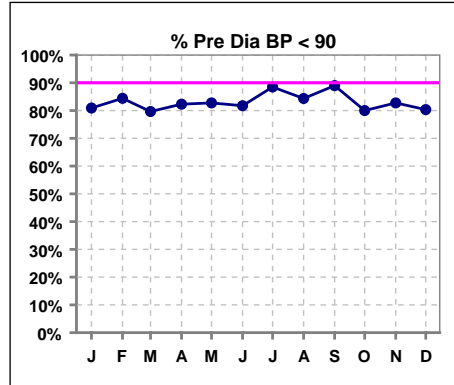


	Jan	Feb	Mar	Apr	May	Jun	Jul	Aug	Sep	Oct	Nov	Dec
# Kt/V	107	109	112	111	114	113	109	113	117	117	115	116
# Kt/V >= 1.2	101	107	107	108	110	111	107	109	110	112	110	112
Pop. Mean	1.61	1.62	1.63	1.65	1.63	1.67	1.69	1.65	1.64	1.67	1.65	1.62
Std. Deviation	0.26	0.26	0.26	0.31	0.26	0.28	0.29	0.35	0.28	0.38	0.24	0.26
Network Mean '04	1.59	1.59	1.59	1.59	1.59	1.59	1.59	1.59	1.59	1.59	1.59	1.59
Natl. Mean '06	1.55	1.55	1.55	1.55	1.55	1.55	1.55	1.55	1.55	1.55	1.55	1.55
<b>% Kt/V &gt;= 1.2</b>	<b>94%</b>	<b>98%</b>	<b>96%</b>	<b>97%</b>	<b>96%</b>	<b>98%</b>	<b>98%</b>	<b>96%</b>	<b>94%</b>	<b>96%</b>	<b>96%</b>	<b>97%</b>
Network % >= 1.2 '06	89%	89%	89%	89%	89%	89%	89%	89%	89%	89%	89%	89%
Natl. % >= 1.2 '06	90%	90%	90%	90%	90%	90%	90%	90%	90%	90%	90%	90%

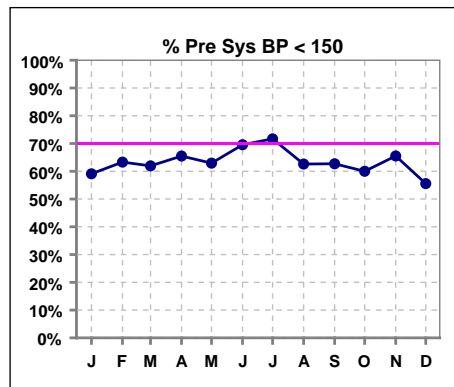


**Blood Pressure Control (Pre)**

	Jan	Feb	Mar	Apr	May	Jun	Jul	Aug	Sep	Oct	Nov	Dec
# Pre Dia BP	110	109	113	113	116	115	113	115	118	120	116	117
# Pre Dia BP < 90	89	92	90	93	96	94	100	97	105	96	96	94
Pop. Mean	78	77	78	78	77	77	75	77	76	77	77	78
Std. Deviation	13.1	13.5	13.7	13.3	12.5	13.6	12.1	12.5	12.6	14.0	13.3	13.6
Network Mean												
Natl. Mean												
<b>% Pre Dia BP &lt; 90</b>	<b>81%</b>	<b>84%</b>	<b>80%</b>	<b>82%</b>	<b>83%</b>	<b>82%</b>	<b>88%</b>	<b>84%</b>	<b>89%</b>	<b>80%</b>	<b>83%</b>	<b>80%</b>



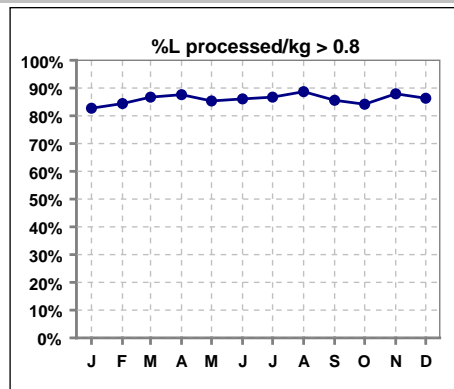
	Jan	Feb	Mar	Apr	May	Jun	Jul	Aug	Sep	Oct	Nov	Dec
# Pre Sys BP	110	109	113	113	116	115	113	115	118	120	116	117
# Pre Sys BP < 150	65	69	70	74	73	80	81	72	74	72	76	65
Pop. Mean	145	144	144	142	142	141	138	142	142	144	143	146
Std. Deviation	22.4	22.0	20.3	21.0	21.8	21.8	19.4	21.4	22.0	23.0	21.2	22.4
Network Mean												
Natl. Mean												
<b>% Pre Sys BP &lt; 150</b>	<b>59%</b>	<b>63%</b>	<b>62%</b>	<b>65%</b>	<b>63%</b>	<b>70%</b>	<b>72%</b>	<b>63%</b>	<b>63%</b>	<b>60%</b>	<b>66%</b>	<b>56%</b>



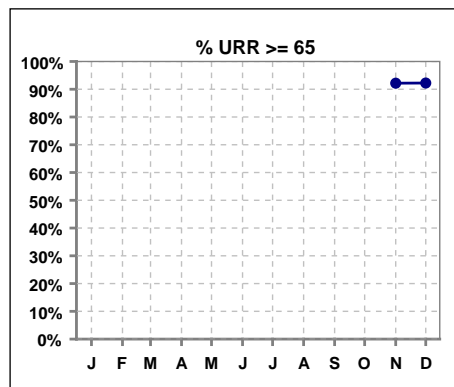
\*Methodology: a) Monthly values based on patient's monthly average of all values present for the month; b) Quarter values are average of all values for quarter; c) Values not averaged use last value present at months end.

**I. ADEQUACY OF DIALYSIS - CONT.**

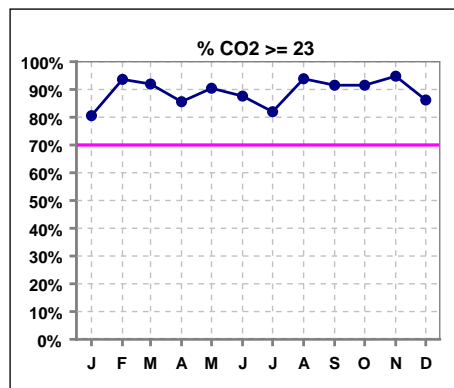
	Jan	Feb	Mar	Apr	May	Jun	Jul	Aug	Sep	Oct	Nov	Dec
# L processed/kg	110	109	113	113	116	115	113	115	118	120	116	117
# L processed/kg>0.8	91	92	98	99	99	99	98	102	101	101	102	101
Pop. Mean	1	1	1	1	1	1	1	1	1	1	1	1
Std. Deviation	0.3	0.2	0.3	0.2	0.2	0.2	0.2	0.2	0.3	0.3	0.3	0.2
Network Mean												
Natl. Mean												
<b>% L processed/kg&gt;0.8</b>	<b>83%</b>	<b>84%</b>	<b>87%</b>	<b>88%</b>	<b>85%</b>	<b>86%</b>	<b>87%</b>	<b>89%</b>	<b>86%</b>	<b>84%</b>	<b>88%</b>	<b>86%</b>



	Jan	Feb	Mar	Apr	May	Jun	Jul	Aug	Sep	Oct	Nov	Dec
# URR											115	116
# URR >= 65											106	107
Pop. Mean											75	74
Std. Deviation											5.63	5.48
Network Mean												
Natl. Mean												
<b>% URR &gt;= 65</b>											<b>92%</b>	<b>92%</b>



	Jan	Feb	Mar	Apr	May	Jun	Jul	Aug	Sep	Oct	Nov	Dec
# CO2	108	110	112	111	115	113	111	114	118	118	115	116
# CO2 >= 23	87	103	103	95	104	99	91	107	108	108	109	100
Pop. Mean	25	26	26	25	26	26	25	26	26	26	26	25
Std. Deviation	3.03	2.59	2.54	2.72	2.47	2.44	2.87	2.67	2.80	2.42	2.45	2.72
Network Mean												
Natl. Mean												
<b>% CO2 &gt;= 23</b>	<b>81%</b>	<b>94%</b>	<b>92%</b>	<b>86%</b>	<b>90%</b>	<b>88%</b>	<b>82%</b>	<b>94%</b>	<b>92%</b>	<b>92%</b>	<b>95%</b>	<b>86%</b>

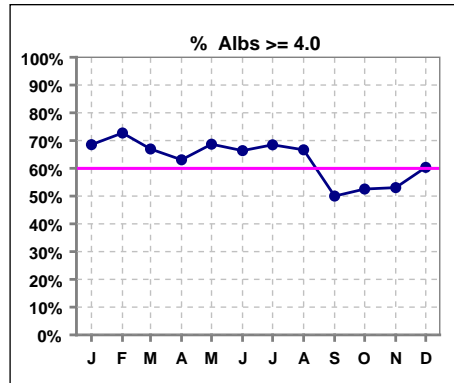


\*Methodology: a) Monthly values based on patient's monthly average of all values present for the month; b) Quarter values are average of all values for quarter; c) Values not averaged use last value present at months end.

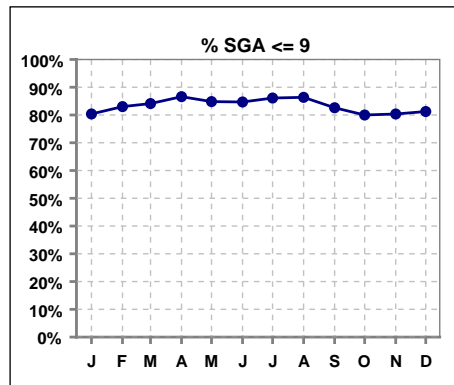
\*Albumin values use BCG method - as of July 2001

**II. NUTRITION**

	Jan	Feb	Mar	Apr	May	Jun	Jul	Aug	Sep	Oct	Nov	Dec
# Albumin	108	110	112	111	115	113	111	114	118	118	115	116
# Albumin >= 4.0	74	80	75	70	79	75	76	76	59	62	61	70
Pop. Mean	4.1	4.1	4.0	4.0	4.0	4.1	4.1	4.1	3.9	3.9	3.9	4.0
Std. Deviation	0.38	0.42	0.44	0.42	0.43	0.37	0.32	0.38	0.40	0.38	0.33	0.35
Network Mean	3.4	3.4	3.4	3.4	3.4	3.4	3.4	3.4	3.4	3.4	3.4	3.4
Natl. Mean	3.8	3.8	3.8	3.8	3.8	3.8	3.8	3.8	3.8	3.8	3.8	3.8
% Alb >= 3.5	94%	95%	92%	94%	93%	95%	96%	96%	89%	91%	90%	95%
% Alb >= 3.0	98%	97%	97%	98%	98%	98%	99%	97%	97%	97%	99%	98%
<b>% Alb &gt;= 4.0</b>	<b>69%</b>	<b>73%</b>	<b>67%</b>	<b>63%</b>	<b>69%</b>	<b>66%</b>	<b>68%</b>	<b>67%</b>	<b>50%</b>	<b>53%</b>	<b>53%</b>	<b>60%</b>
Netwk%>=3.5 '06	82%	82%	82%	82%	82%	82%	82%	82%	82%	82%	82%	82%
Netwk%>=4.0 '06	34%	34%	34%	34%	34%	34%	34%	34%	34%	34%	34%	34%
Natl % >= 3.5 '06	81%	81%	81%	81%	81%	81%	81%	81%	81%	81%	81%	81%
Natl. % >= 4.0 '06	34%	34%	34%	34%	34%	34%	34%	34%	34%	34%	34%	34%



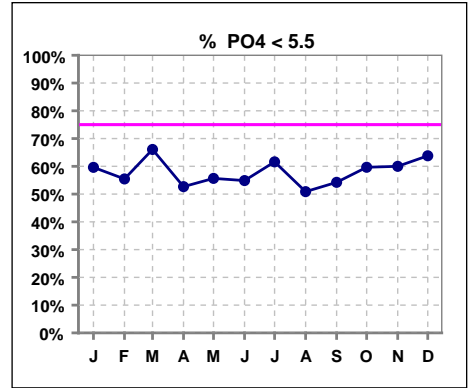
	Jan	Feb	Mar	Apr	May	Jun	Jul	Aug	Sep	Oct	Nov	Dec
# SGA	107	106	107	112	112	111	108	110	115	115	112	112
# SGA <=9	86	88	90	97	95	94	93	95	95	92	90	91
Pop. Mean	7	7	6	6	6	6	6	6	6	6	6	6
Std. Deviation	3.4	3.3	3.2	3.1	3.2	3.0	2.9	2.9	3.0	3.1	3.0	2.9
Network Mean												
Natl. Mean												
<b>% SGA &lt;= 9</b>	<b>80%</b>	<b>83%</b>	<b>84%</b>	<b>87%</b>	<b>85%</b>	<b>85%</b>	<b>86%</b>	<b>86%</b>	<b>83%</b>	<b>80%</b>	<b>80%</b>	<b>81%</b>



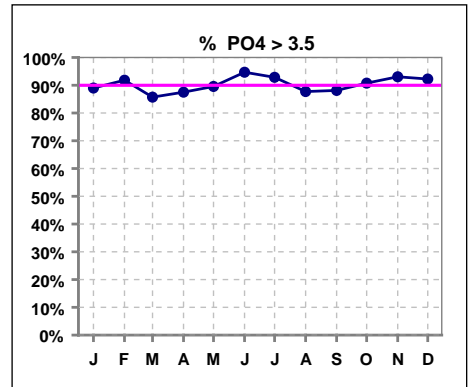
\*Methodology: a) Monthly values based on patient's monthly average of all values present for the month; b) Quarter values are average of all values for quarter; c) Values not averaged use last value present at months end.

**III. OSTEODYSTROPHY**

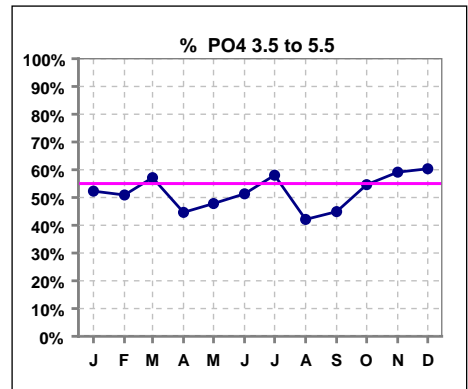
	Jan	Feb	Mar	Apr	May	Jun	Jul	Aug	Sep	Oct	Nov	Dec
# PO4	109	110	112	112	115	113	112	114	118	119	115	116
# PO4 < 5.5	65	61	74	59	64	62	69	58	64	71	69	74
Pop. Mean	5.2	5.3	5.1	5.4	5.3	5.5	5.3	5.4	5.2	5.1	5.2	5.1
Std. Deviation	1.45	1.27	1.25	1.45	1.49	1.25	1.35	1.34	1.38	1.25	1.18	1.14
Network Mean												
Natl. Mean '06	5	5	5	5	5	5	5	5	5	5	5	5
% PO4 < 5.5	60%	55%	66%	53%	56%	55%	62%	51%	54%	60%	60%	64%



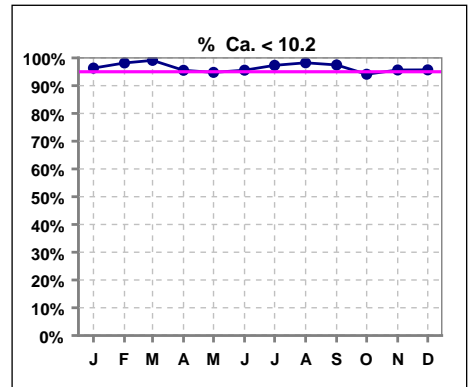
	Jan	Feb	Mar	Apr	May	Jun	Jul	Aug	Sep	Oct	Nov	Dec
# PO4	109	110	112	112	115	113	112	114	118	119	115	116
# PO4 > 3.5	97	101	96	98	103	107	104	100	104	108	107	107
Pop. Mean	5.2	5.3	5.1	5.4	5.3	5.5	5.3	5.4	5.2	5.1	5.2	5.1
Std. Deviation	1.45	1.27	1.25	1.45	1.49	1.25	1.35	1.34	1.38	1.25	1.18	1.14
Network Mean												
Natl. Mean '06	5	5	5	5	5	5	5	5	5	5	5	5
% PO4 > 3.5	89%	92%	86%	88%	90%	95%	93%	88%	88%	91%	93%	92%



	Jan	Feb	Mar	Apr	May	Jun	Jul	Aug	Sep	Oct	Nov	Dec
# PO4	109	110	112	112	115	113	112	114	118	119	115	116
# PO4 3.5 to 5.5	57	56	64	50	55	58	65	48	53	65	68	70
Pop. Mean	5.2	5.3	5.1	5.4	5.3	5.5	5.3	5.4	5.2	5.1	5.2	5.1
Std. Deviation	1.45	1.27	1.25	1.45	1.49	1.25	1.35	1.34	1.38	1.25	1.18	1.14
Network Mean												
% PO4 3.5 to 5.5	52%	51%	57%	45%	48%	51%	58%	42%	45%	55%	59%	60%



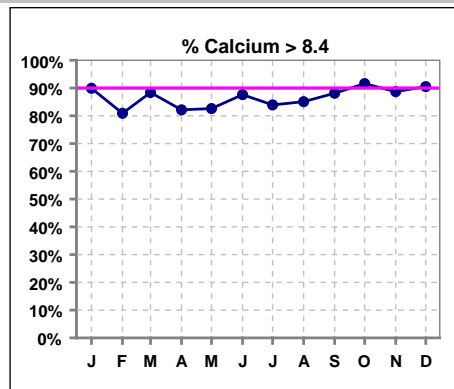
	Jan	Feb	Mar	Apr	May	Jun	Jul	Aug	Sep	Oct	Nov	Dec
# Calcium	109	110	112	112	115	113	112	114	118	119	115	116
# Calcium < 10.2	105	108	111	107	109	108	109	112	115	112	110	111
Pop. Mean	9.1	9.0	9.1	9.1	9.0	9.1	9.1	9.1	9.2	9.3	9.2	9.3
Std. Deviation	0.58	0.63	0.56	0.66	0.66	0.64	0.60	0.61	0.60	0.61	0.62	0.64
Network Mean												
Natl. Mean '06	9	9	9	9	9	9	9	9	9	9	9	9
% Ca < 10.2	96%	98%	99%	96%	95%	96%	97%	98%	97%	94%	96%	96%



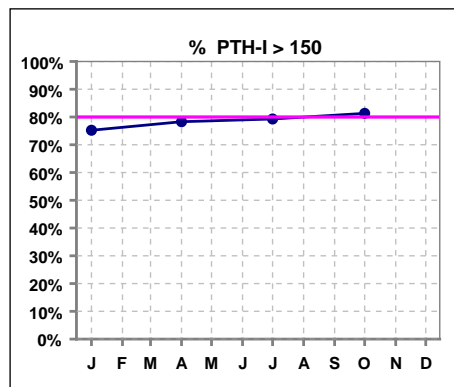
\*Methodology: a) Monthly values based on patient's monthly average of all values present for the month; b) Quarter values are average of all values for quarter; c) Values not averaged use last value present at months end.

**III. OSTEODYSTROPHY - CONT.**

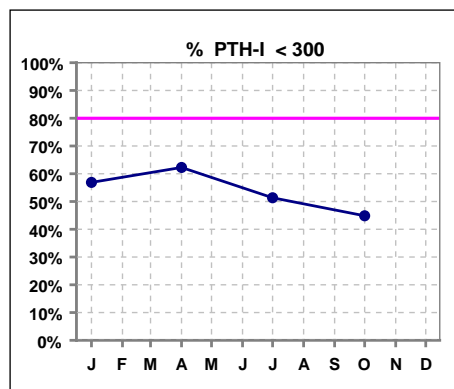
	Jan	Feb	Mar	Apr	May	Jun	Jul	Aug	Sep	Oct	Nov	Dec
# Calcium	109	110	112	112	115	113	112	114	118	119	115	116
# Calcium > 8.4	98	89	99	92	95	99	94	97	104	109	102	105
Pop. Mean	9.1	9.0	9.1	9.1	9.0	9.1	9.1	9.1	9.2	9.3	9.2	9.3
Std. Deviation	0.58	0.63	0.56	0.66	0.66	0.64	0.60	0.61	0.60	0.61	0.62	0.64
Network Mean												
Natl. Mean '06	9	9	9	9	9	9	9	9	9	9	9	9
<b>% Calcium &gt; 8.4</b>	<b>90%</b>	<b>81%</b>	<b>88%</b>	<b>82%</b>	<b>83%</b>	<b>88%</b>	<b>84%</b>	<b>85%</b>	<b>88%</b>	<b>92%</b>	<b>89%</b>	<b>91%</b>



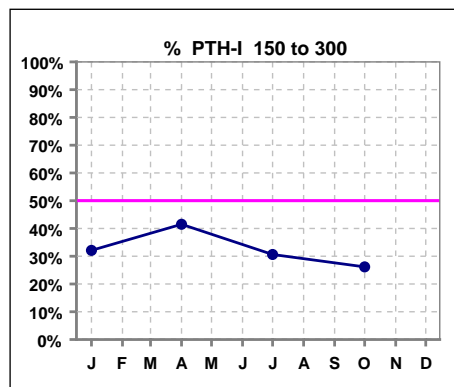
	Jan	Feb	Mar	Apr	May	Jun	Jul	Aug	Sep	Oct	Nov	Dec
# PTH-I	109			106			111			107		
# PTH-I > 150	82			83			88			87		
Pop. Mean	377			347			376			437		
Std. Deviation	361			291			311			397		
Network Mean												
Natl. Mean												
<b>% PTH-I &gt; 150</b>	<b>75%</b>			<b>78%</b>			<b>79%</b>			<b>81%</b>		



	Jan	Feb	Mar	Apr	May	Jun	Jul	Aug	Sep	Oct	Nov	Dec
# PTH-I	109			106			111			107		
# PTH-I < 300	62			66			57			48		
Pop. Mean	377			347			376			437		
Std. Deviation	361			291			311			397		
Network Mean												
Natl. Mean												
<b>% PTH-I &lt; 300</b>	<b>57%</b>			<b>62%</b>			<b>51%</b>			<b>45%</b>		



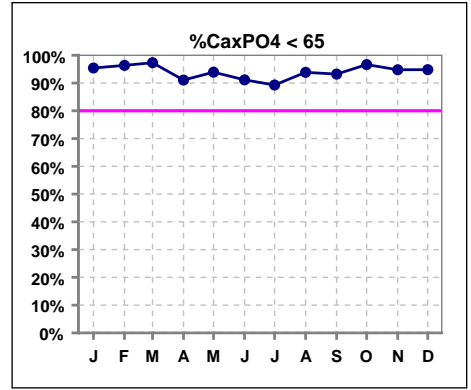
	Jan	Feb	Mar	Apr	May	Jun	Jul	Aug	Sep	Oct	Nov	Dec
# PTH-I	109			106			111			107		
# PTH-I 150 to 300	35			44			34			28		
Pop. Mean	377			347			376			437		
Std. Deviation	361			291			311			397		
Network Mean												
Natl. Mean												
<b>% PTH-I 150 to 300</b>	<b>32%</b>			<b>42%</b>			<b>31%</b>			<b>26%</b>		



\*Methodology: a) Monthly values based on patient's monthly average of all values present for the month; b) Quarterly values are average of all values for quarter; c) Values not averaged use last value present at months end.

**III. OSTEODYSTROPHY - CONT.**

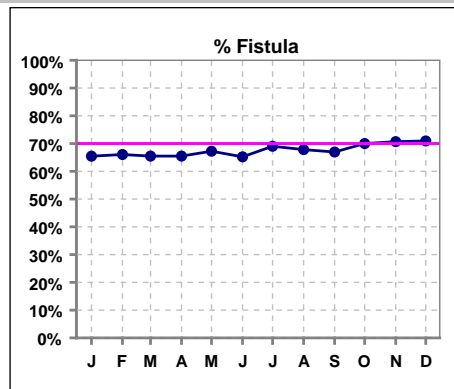
	Jan	Feb	Mar	Apr	May	Jun	Jul	Aug	Sep	Oct	Nov	Dec
# Ca x PO4	109	110	112	112	115	113	112	114	118	119	115	116
# Ca x PO4 < 65	104	106	109	102	108	103	100	107	110	115	109	110
Pop. Mean	47.1	47.4	46.0	48.5	48.1	50.3	48.0	48.8	47.9	47.4	48.4	47.8
Std. Deviation	12.4	11.1	11.1	12.2	13.5	11.5	12.1	12.3	12.8	11.7	11.0	10.7
Network Mean												
Natl. Mean												
<b>% Ca x PO4 &lt; 65</b>	<b>95%</b>	<b>96%</b>	<b>97%</b>	<b>91%</b>	<b>94%</b>	<b>91%</b>	<b>89%</b>	<b>94%</b>	<b>93%</b>	<b>97%</b>	<b>95%</b>	<b>95%</b>



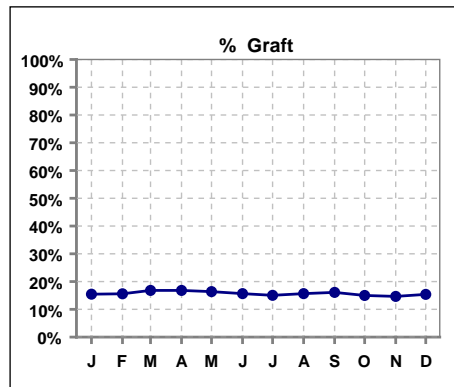
\*Methodology: a) Monthly values based on patient's monthly average of all values present for the month; b) Quarter values are average of all values for quarter; c) Values not averaged use last value present at months end.

**IV. ACCESS**

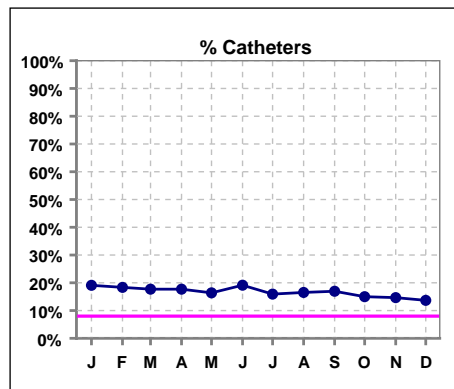
	Jan	Feb	Mar	Apr	May	Jun	Jul	Aug	Sep	Oct	Nov	Dec
# Access	110	109	113	113	116	115	113	115	118	120	116	117
# Fistula	72	72	74	74	78	75	78	78	79	84	82	83
Network % '06	61%	61%	61%	61%	61%	61%	61%	61%	61%	61%	61%	61%
Natl. % '06	45%	45%	45%	45%	45%	45%	45%	45%	45%	45%	45%	45%
<b>% Fistula</b>	<b>65%</b>	<b>66%</b>	<b>65%</b>	<b>65%</b>	<b>67%</b>	<b>65%</b>	<b>69%</b>	<b>68%</b>	<b>67%</b>	<b>70%</b>	<b>71%</b>	<b>71%</b>



	Jan	Feb	Mar	Apr	May	Jun	Jul	Aug	Sep	Oct	Nov	Dec
# Access	110	109	113	113	116	115	113	115	118	120	116	117
# Graft	17	17	19	19	19	18	17	18	19	18	17	18
Network %												
Natl. %												
<b>% Graft</b>	<b>15%</b>	<b>16%</b>	<b>17%</b>	<b>17%</b>	<b>16%</b>	<b>16%</b>	<b>15%</b>	<b>16%</b>	<b>16%</b>	<b>15%</b>	<b>15%</b>	<b>15%</b>

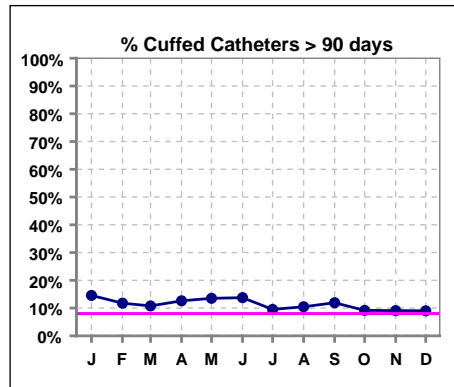


	Jan	Feb	Mar	Apr	May	Jun	Jul	Aug	Sep	Oct	Nov	Dec
# Access	110	109	113	113	116	115	113	115	118	120	116	117
# Catheters	21	20	20	20	19	22	18	19	20	18	17	16
Network % '06	22%	22%	22%	22%	22%	22%	22%	22%	22%	22%	22%	22%
Natl. % '06	29%	29%	29%	29%	29%	29%	29%	29%	29%	29%	29%	29%
<b>% Catheters</b>	<b>19%</b>	<b>18%</b>	<b>18%</b>	<b>18%</b>	<b>16%</b>	<b>19%</b>	<b>16%</b>	<b>17%</b>	<b>17%</b>	<b>15%</b>	<b>15%</b>	<b>14%</b>



**Cuffed Catheters > 90 days**

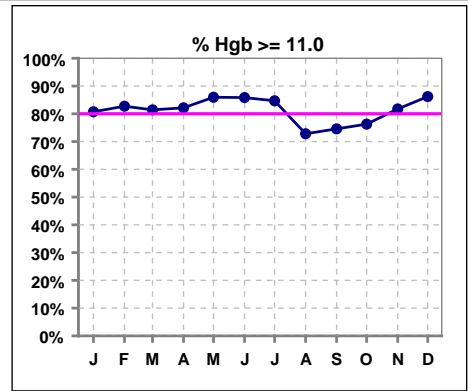
	Jan	Feb	Mar	Apr	May	Jun	Jul	Aug	Sep	Oct	Nov	Dec
# Access	110	109	113	113	116	115	113	115	118	120	116	117
# Cuffed Catheters	15	12	11	13	15	15	10	11	13	10	10	10
Network % '06	22%	22%	22%	22%	22%	22%	22%	22%	22%	22%	22%	22%
Natl. % '06	29%	29%	29%	29%	29%	29%	29%	29%	29%	29%	29%	29%
<b>% Cuffed Catheters</b>	<b>15%</b>	<b>12%</b>	<b>11%</b>	<b>13%</b>	<b>14%</b>	<b>14%</b>	<b>10%</b>	<b>10%</b>	<b>12%</b>	<b>9%</b>	<b>9%</b>	<b>9%</b>



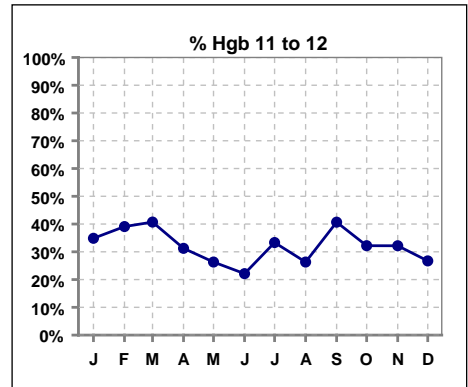
\*Methodology: a) Monthly values based on patient's monthly average of all values present for the month; b) Quarter values are average of all values for quarter; c) Values not averaged use last value present at months end.

**V. ANEMIA**

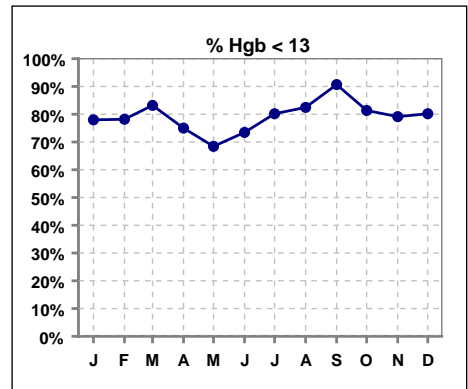
	Jan	Feb	Mar	Apr	May	Jun	Jul	Aug	Sep	Oct	Nov	Dec
# Hgb	109	110	113	112	114	113	111	114	118	118	115	116
# Hgb >= 11.0	88	91	92	92	98	97	94	83	88	90	94	100
Pop. Mean	12.1	12.0	11.9	12.1	12.4	12.3	12.1	11.8	11.7	11.9	12.0	12.1
Std. Deviation	1.4	1.3	1.2	1.3	1.3	1.2	1.2	1.4	1.2	1.3	1.2	1.1
Network Mean	11.8	11.8	11.8	11.8	11.8	11.8	11.8	11.8	11.8	11.8	11.8	11.8
Natl. Mean '06	12	12	12	12	12	12	12	12	12	12	12	12
<b>% Hgb &gt;= 11.0</b>	<b>81%</b>	<b>83%</b>	<b>81%</b>	<b>82%</b>	<b>86%</b>	<b>86%</b>	<b>85%</b>	<b>73%</b>	<b>75%</b>	<b>76%</b>	<b>82%</b>	<b>86%</b>
<b>% Hgb &lt;= 11.0</b>	<b>20%</b>	<b>18%</b>	<b>20%</b>	<b>20%</b>	<b>15%</b>	<b>14%</b>	<b>17%</b>	<b>29%</b>	<b>29%</b>	<b>25%</b>	<b>18%</b>	<b>16%</b>
<b>% Netwk &gt;= 11 '06</b>	<b>87%</b>	<b>87%</b>	<b>87%</b>	<b>87%</b>	<b>87%</b>	<b>87%</b>	<b>87%</b>	<b>87%</b>	<b>87%</b>	<b>87%</b>	<b>87%</b>	<b>87%</b>
<b>% Natl. &gt;= 11 '06</b>	<b>84%</b>	<b>84%</b>	<b>84%</b>	<b>84%</b>	<b>84%</b>	<b>84%</b>	<b>84%</b>	<b>84%</b>	<b>84%</b>	<b>84%</b>	<b>84%</b>	<b>84%</b>



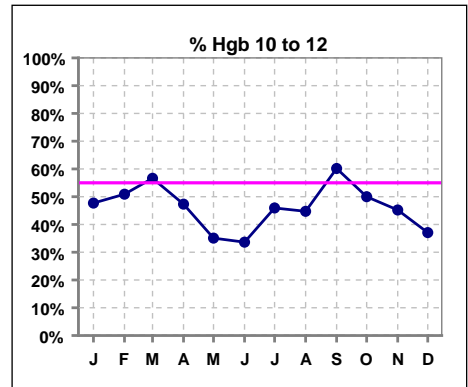
	Jan	Feb	Mar	Apr	May	Jun	Jul	Aug	Sep	Oct	Nov	Dec
# Hgb	109	110	113	112	114	113	111	114	118	118	115	116
# Hgb 11 to 12	38	43	46	35	30	25	37	30	48	38	37	31
Pop. Mean	12.1	12.0	11.9	12.1	12.4	12.3	12.1	11.8	11.7	11.9	12.0	12.1
Std. Deviation	1.4	1.3	1.2	1.3	1.3	1.2	1.2	1.4	1.2	1.3	1.2	1.1
Network Mean	11.8	11.8	11.8	11.8	11.8	11.8	11.8	11.8	11.8	11.8	11.8	11.8
Natl. Mean '06	12	12	12	12	12	12	12	12	12	12	12	12
<b>% Hgb 11 to 12</b>	<b>35%</b>	<b>39%</b>	<b>41%</b>	<b>31%</b>	<b>26%</b>	<b>22%</b>	<b>33%</b>	<b>26%</b>	<b>41%</b>	<b>32%</b>	<b>32%</b>	<b>27%</b>



	Jan	Feb	Mar	Apr	May	Jun	Jul	Aug	Sep	Oct	Nov	Dec
# Hgb	109	110	113	112	114	113	111	114	118	118	115	116
# Hgb < 13	85	86	94	84	78	83	89	94	107	96	91	93
Pop. Mean	12.1	12.0	11.9	12.1	12.4	12.3	12.1	11.8	11.7	11.9	12.0	12.1
Std. Deviation	1.4	1.3	1.2	1.3	1.3	1.2	1.2	1.4	1.2	1.3	1.2	1.1
Network Mean	11.8	11.8	11.8	11.8	11.8	11.8	11.8	11.8	11.8	11.8	11.8	11.8
<b>% Hgb &lt; 13</b>	<b>78%</b>	<b>78%</b>	<b>83%</b>	<b>75%</b>	<b>68%</b>	<b>73%</b>	<b>80%</b>	<b>82%</b>	<b>91%</b>	<b>81%</b>	<b>79%</b>	<b>80%</b>



	Jan	Feb	Mar	Apr	May	Jun	Jul	Aug	Sep	Oct	Nov	Dec
# Hgb	109	110	113	112	114	113	111	114	118	118	115	116
# Hgb 10 to 12	52	56	64	53	40	38	51	51	71	59	52	43
Pop. Mean	12.1	12.0	11.9	12.1	12.4	12.3	12.1	11.8	11.7	11.9	12.0	12.1
Std. Deviation	1.4	1.3	1.2	1.3	1.3	1.2	1.2	1.4	1.2	1.3	1.2	1.1
Network Mean	11.8	11.8	11.8	11.8	11.8	11.8	11.8	11.8	11.8	11.8	11.8	11.8
<b>% Hgb 10 to 12</b>	<b>48%</b>	<b>51%</b>	<b>57%</b>	<b>47%</b>	<b>35%</b>	<b>34%</b>	<b>46%</b>	<b>45%</b>	<b>60%</b>	<b>50%</b>	<b>45%</b>	<b>37%</b>

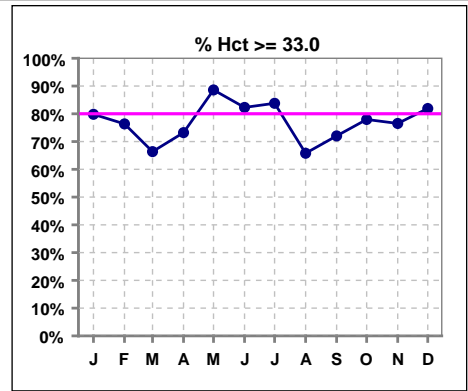


\*Methodology: a) Monthly values based on patient's monthly average of all values present for the month; b) Quarter values are average of all values for quarter; c) Values not averaged use last value present at months end.



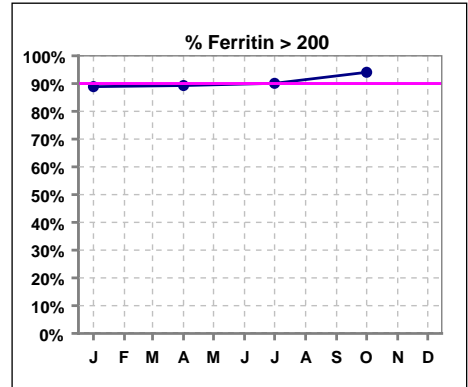
**V. ANEMIA - CONT.**

	Jan	Feb	Mar	Apr	May	Jun	Jul	Aug	Sep	Oct	Nov	Dec
# Hct	109	110	113	112	114	113	111	114	118	118	115	116
# Hct >= 33.0	87	84	75	82	101	93	93	75	85	92	88	95
Pop. Mean	36	35	35	35	37	36	36	35	35	36	35	36
Std. Deviation	4.04	3.88	3.40	3.96	3.91	3.69	3.76	4.21	3.56	3.96	3.73	3.33
Network Mean												
Natl. Mean												
<b>% Hct &gt;= 33.0</b>	80%	76%	66%	73%	89%	82%	84%	66%	72%	78%	77%	82%
<b>% Netwk &gt;= 33 '05</b>	94%	94%	94%	94%	94%	94%	94%	94%	94%	94%	94%	94%
<b>% Natl. &gt;= 33 '05</b>	92%	92%	92%	92%	92%	92%	92%	92%	92%	92%	92%	92%

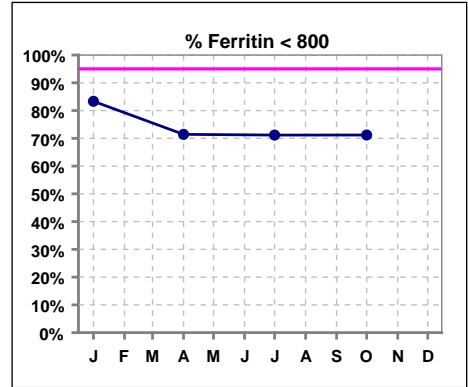


**Iron Profile**

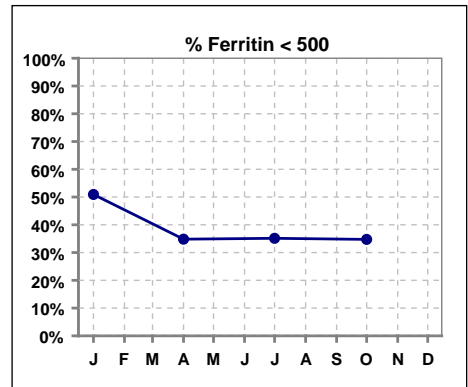
	Jan	Feb	Mar	Apr	May	Jun	Jul	Aug	Sep	Oct	Nov	Dec
# Ferritin	108			112			111			118		
# Ferritin > 200	96			100			100			111		
Pop. Mean	552			634			636			640		
Std. Deviation	310			345			295			301		
Network Mean												
Natl. Mean '06	583			583			583			583		
<b>% Ferritin &gt; 200</b>	89%			89%			90%			94%		
<b>% Netwk &gt;= 100 '06</b>	93%			93%								
<b>% Natl. &gt;=100 '06</b>	95%			95%								



	Jan	Feb	Mar	Apr	May	Jun	Jul	Aug	Sep	Oct	Nov	Dec
# Ferritin	108			112			111			118		
# Ferritin < 800	90			80			79			84		
Pop. Mean	552			634			636			640		
Std. Deviation	310			345			295			301		
Network Mean												
Natl. Mean '06	583			583			583			583		
<b>% Ferritin &lt; 800</b>	83%			71%			71%			71%		



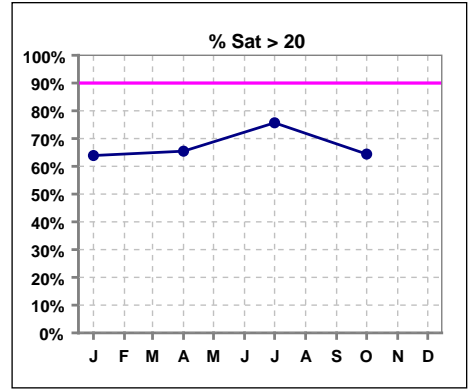
	Jan	Feb	Mar	Apr	May	Jun	Jul	Aug	Sep	Oct	Nov	Dec
# Ferritin	108			112			111			118		
# Ferritin < 500	55			39			39			41		
Pop. Mean	552			634			636			640		
Std. Deviation	310			345			295			301		
Network Mean												
Natl. Mean '06	583			583			583			583		
<b>% Ferritin &lt; 500</b>	51%			35%			35%			35%		



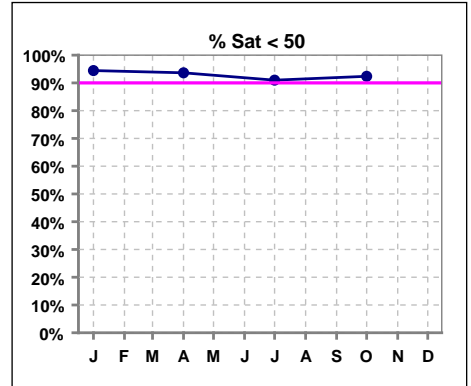
\*Methodology: a) Monthly values based on patient's monthly average of all values present for the month; b) Quarter values are average of all values for quarter; c) Values not averaged use last value present at months end.

**V. ANEMIA - CONT.**

	Jan	Feb	Mar	Apr	May	Jun	Jul	Aug	Sep	Oct	Nov	Dec
# % Sat	108			110			111			118		
# % Sat > 20	69			72			84			76		
Pop. Mean	27			28			30			27		
Std. Deviation	13			14			16			13		
Network Mean												
Natl. Mean '06	28			28			28			28		
<b>% Sat% &gt; 20</b>	64%			65%			76%			64%		
<b>% Netwk &gt;= 20 '06</b>	74%			74%			74%			74%		
<b>% Natl. &gt;=20 '06</b>	79%			79%			79%			79%		



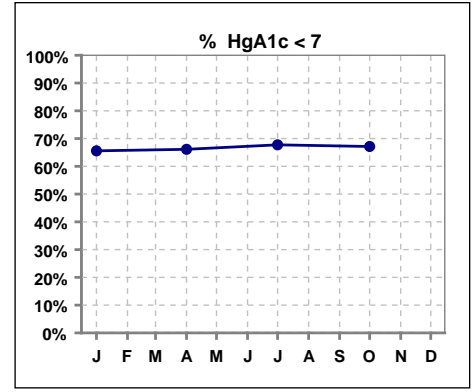
	Jan	Feb	Mar	Apr	May	Jun	Jul	Aug	Sep	Oct	Nov	Dec
# % Sat	108			110			111			118		
# % Sat < 50	102			103			101			109		
Pop. Mean	27			28			30			27		
Std. Deviation	13			14			16			13		
Network Mean												
Natl. Mean '06	28			28			28			28		
<b>% Sat% &lt; 50</b>	94%			94%			91%			92%		



\*Methodology: a) Monthly values based on patient's monthly average of all values present for the month; b) Quarter values are average of all values for quarter; c) Values not averaged use last value present at months end.

**VI. Diabetes**

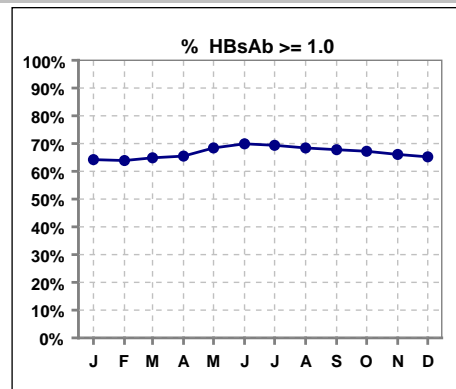
	Jan	Feb	Mar	Apr	May	Jun	Jul	Aug	Sep	Oct	Nov	Dec
# HgA1c	61			62			62			70		
# HgA1c < 7	40			41			42			47		
Pop. Mean	7.0			6.6			6.7			6.5		
Std. Deviation	1.71			1.18			1.21			1.18		
Network Mean												
Natl. Mean												
<b>% HgA1c &lt; 7</b>	<b>66%</b>			<b>66%</b>			<b>68%</b>			<b>67%</b>		



\*Methodology: a) Monthly values based on patient's monthly average of all values present for the month; b) Quarter values are average of all values for quarter; c) Values not averaged use last value present at months end.

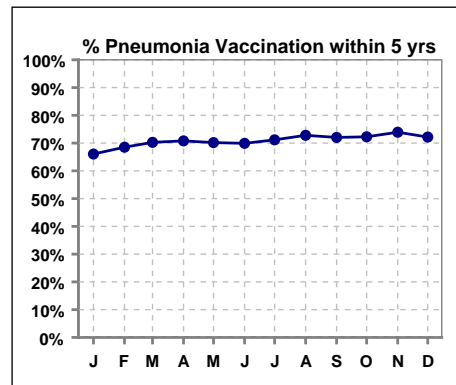
**VII. Infection Control**

	Jan	Feb	Mar	Apr	May	Jun	Jul	Aug	Sep	Oct	Nov	Dec
# Patient	109	108	111	113	114	113	111	114	118	119	115	115
# HBsAb >= 1.0	70	69	72	74	78	79	77	78	80	80	76	75
% HBsAb >= 1.0	64%	64%	65%	65%	68%	70%	69%	68%	68%	67%	66%	65%



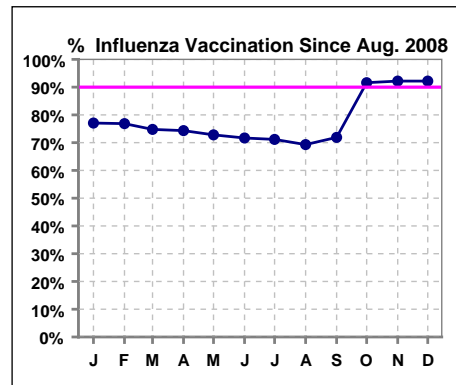
**Pneumonia vaccination within the past five years at NKC**

	Jan	Feb	Mar	Apr	May	Jun	Jul	Aug	Sep	Oct	Nov	Dec
# Patient	109	108	111	113	114	113	111	114	118	119	115	115
# Pneumonia	72	74	78	80	80	79	79	83	85	86	85	83
% Pneumonia	66%	69%	70%	71%	70%	70%	71%	73%	72%	72%	74%	72%



**Influenza vaccination since August at NKC**

	Jan	Feb	Mar	Apr	May	Jun	Jul	Aug	Sep	Oct	Nov	Dec
# Patient	109	108	111	113	114	113	111	114	121	119	115	115
# Influenza since 08/08	84	83	83	84	83	81	79	79	87	109	106	106
% Influenza	77%	77%	75%	74%	73%	72%	71%	69%	72%	92%	92%	92%



\*Methodology: a) Monthly values based on patient's monthly average of all values present for the month; b) Quarter values are average of all values for quarter; c) Values not averaged use last value present at months end.