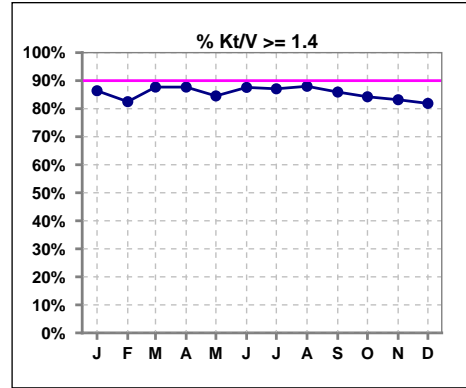
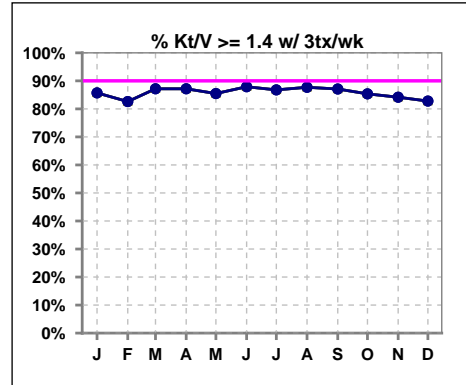


I. ADEQUACY OF DIALYSIS

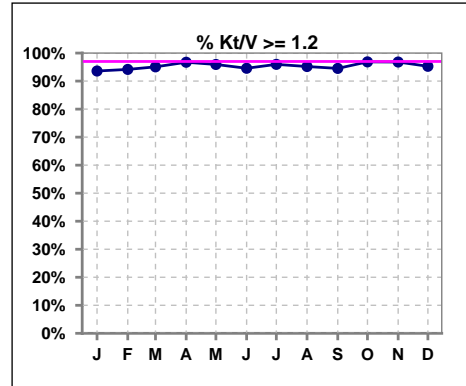
	Jan	Feb	Mar	Apr	May	Jun	Jul	Aug	Sep	Oct	Nov	Dec
# Kt/V	125	120	122	122	123	129	124	125	128	127	125	127
# Kt/V >= 1.4	108	99	107	107	104	113	108	110	110	107	104	104
Pop. Mean	1.62	1.62	1.65	1.67	1.89	1.68	1.70	1.66	1.68	1.65	1.64	1.65
Std. Deviation	0.26	0.27	0.26	0.27	2.46	0.31	0.27	0.25	0.27	0.37	0.26	0.28
% Kt/V >= 1.4	86%	83%	88%	88%	85%	88%	87%	88%	86%	84%	83%	82%



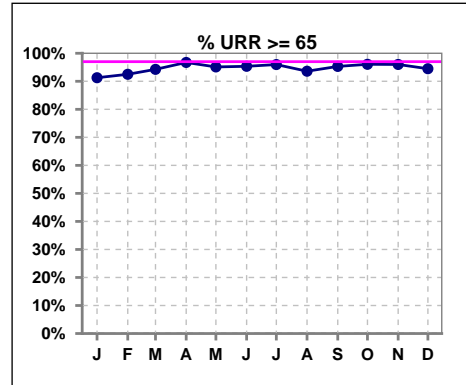
	Jan	Feb	Mar	Apr	May	Jun	Jul	Aug	Sep	Oct	Nov	Dec
# Kt/V w/ 3tx/wk	119	115	117	117	117	124	121	122	124	123	120	122
# Kt/V >= 1.4 w/ 3tx/wk	102	95	102	102	100	109	105	107	108	105	101	101
Pop. Mean	1.62	1.62	1.64	1.66	1.90	1.68	1.70	1.66	1.68	1.66	1.64	1.65
Std. Deviation	0.26	0.26	0.26	0.27	2.52	0.30	0.27	0.25	0.27	0.38	0.26	0.28
% Kt/V >= 1.4 w/ 3tx/wk	86%	83%	87%	87%	85%	88%	87%	88%	87%	85%	84%	83%



	Jan	Feb	Mar	Apr	May	Jun	Jul	Aug	Sep	Oct	Nov	Dec
# Kt/V	125	120	122	122	123	129	124	125	128	127	125	127
# Kt/V >= 1.2	117	113	116	118	118	122	119	119	121	123	121	121
Pop. Mean	1.62	1.62	1.65	1.67	1.89	1.68	1.70	1.66	1.68	1.65	1.64	1.65
Std. Deviation	0.26	0.27	0.26	0.27	2.46	0.31	0.27	0.25	0.27	0.37	0.26	0.28
% Kt/V >= 1.2	94%	94%	95%	97%	96%	95%	96%	95%	95%	97%	97%	95%



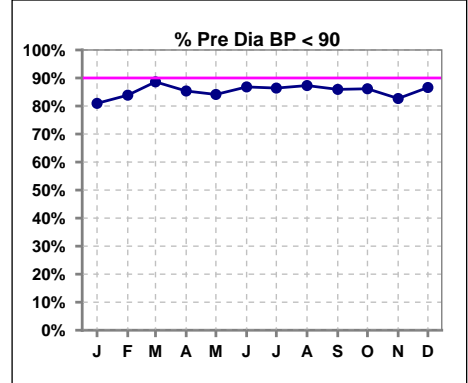
	Jan	Feb	Mar	Apr	May	Jun	Jul	Aug	Sep	Oct	Nov	Dec
# URR	126	120	122	122	123	129	124	125	128	127	125	127
# URR >= 65	115	111	115	118	117	123	119	117	122	122	120	120
Pop. Mean	74	75	75	75	75	75	76	76	76	75	75	75
Std. Deviation	6.11	6.43	5.95	5.77	6.37	7.30	5.47	5.46	5.09	7.00	5.33	5.88
% URR >= 65	91%	93%	94%	97%	95%	95%	96%	94%	95%	96%	96%	94%



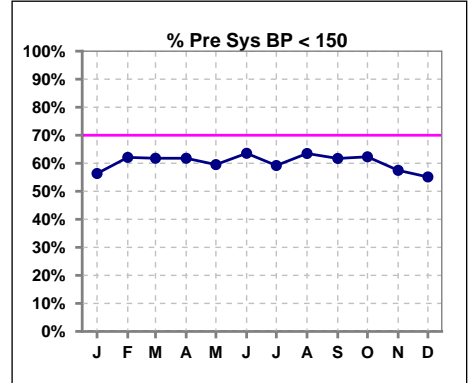
I. ADEQUACY OF DIALYSIS - CONT.

Blood Pressure Control (Pre)

	Jan	Feb	Mar	Apr	May	Jun	Jul	Aug	Sep	Oct	Nov	Dec
# Pre Dia BP	126	124	123	123	126	129	125	126	128	130	127	127
# Pre Dia BP < 90	102	104	109	105	106	112	108	110	110	112	105	110
Pop. Mean	76	76	76	77	76	75	79	75	75	75	76	76
Std. Deviation	14.3	13.3	12.5	16.8	13.6	12.3	36.3	12.4	12.8	14.3	14.0	13.2
% Pre Dia BP < 90	81%	84%	89%	85%	84%	87%	86%	87%	86%	86%	83%	87%



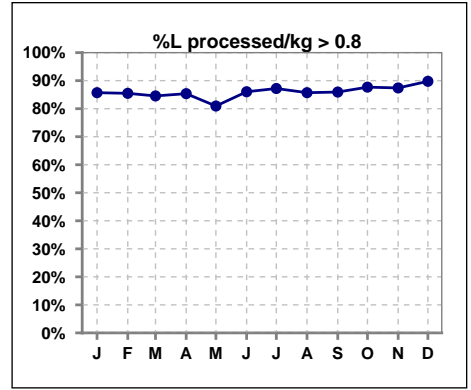
	Jan	Feb	Mar	Apr	May	Jun	Jul	Aug	Sep	Oct	Nov	Dec
# Pre Sys BP	126	124	123	123	126	129	125	126	128	130	127	127
# Pre Sys BP < 150	71	77	76	76	75	82	74	80	79	81	73	70
Pop. Mean	145	144	144	144	144	142	143	142	142	142	145	145
Std. Deviation	22.9	22.5	21.7	22.7	23.1	22.5	22.8	21.4	22.4	21.9	22.8	22.2
%Pre Sys BP <150	56%	62%	62%	62%	60%	64%	59%	63%	62%	62%	57%	55%



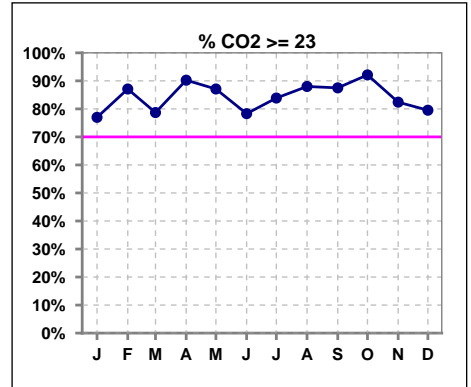
Methodology: a) All labs for 'Adequacy of Dialysis', 'Nutrition', 'Osteodystrophy', 'Anemia' and 'Diabetes' based on last value of month; b) BP's and #L processed are average of all values for month; c) Access data takes last access of month; d) Values for SGA and 'Infection Control' use most recent result.

I. ADEQUACY OF DIALYSIS - CONT.

	Jan	Feb	Mar	Apr	May	Jun	Jul	Aug	Sep	Oct	Nov	Dec
# L processed/kg	126	124	123	123	126	129	125	126	128	130	127	127
# L processed/kg>0.8	108	106	104	105	102	111	109	108	110	114	111	114
Pop. Mean	1	1	1	1	1	1	1	1	1	1	1	1
Std. Deviation	0.2	0.2	0.3	0.2	0.3	0.2	0.2	0.2	0.2	0.2	0.3	0.2
% L processed/kg>0.8	86%	85%	85%	85%	81%	86%	87%	86%	86%	88%	87%	90%



	Jan	Feb	Mar	Apr	May	Jun	Jul	Aug	Sep	Oct	Nov	Dec
# CO2	126	124	122	123	124	129	124	125	128	127	125	127
# CO2 >= 23	97	108	96	111	108	101	104	110	112	117	103	101
Pop. Mean	25	25	25	26	26	25	25	26	26	26	25	25
Std. Deviation	3.06	2.57	3.05	2.62	2.93	2.84	2.74	2.97	2.71	2.47	3.45	2.93
% CO2 >= 23	77%	87%	79%	90%	87%	78%	84%	88%	88%	92%	82%	80%

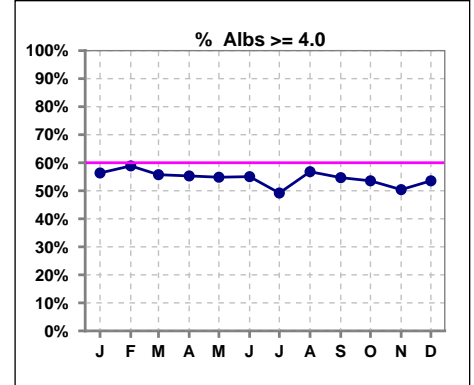


Methodology: a) All labs for 'Adequacy of Dialysis', 'Nutrition', 'Osteodystrophy', 'Anemia' and 'Diabetes' based on last value of month; b) BP's and #L processed are average of all values for month; c) Access data takes last access of month; d) Values for SGA and 'Infection Control' use most recent result.

*Albumin values use BCG method - as of July 2001

II. NUTRITION

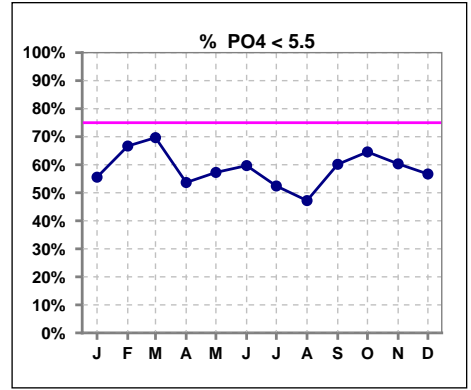
	Jan	Feb	Mar	Apr	May	Jun	Jul	Aug	Sep	Oct	Nov	Dec
# Albumin	126	124	122	123	124	129	124	125	128	127	125	127
# Albumin >= 4.0	71	73	68	68	68	71	61	71	70	68	63	68
Pop. Mean	3.9	4.0	4.0	4.0	4.0	4.0	3.9	4.0	4.0	3.9	4.0	4.0
Std. Deviation	0.35	0.33	0.39	0.39	0.33	0.33	0.31	0.34	0.33	0.35	0.35	0.35
% Alb >= 3.5	91%	94%	91%	91%	95%	95%	95%	94%	94%	93%	94%	94%
% Alb >= 3.0	99%	99%	98%	98%	99%	99%	99%	98%	100%	98%	100%	100%
% Alb >= 4.0	56%	59%	56%	55%	55%	55%	49%	57%	55%	54%	50%	54%



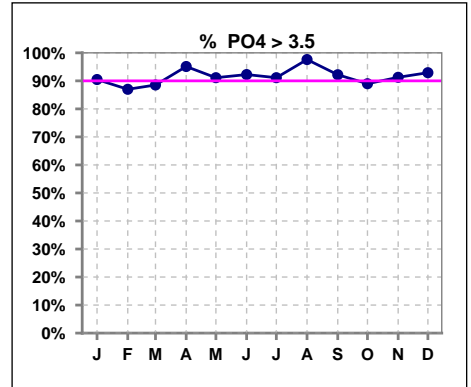
Methodology: a) All labs for 'Adequacy of Dialysis', 'Nutrition', 'Osteodystrophy', 'Anemia' and 'Diabetes' based on last value of month; b) BP's and #L processed are average of all values for month; c) Access data takes last access of month; d) Values for SGA and 'Infection Control' use most recent result.

III. OSTEODYSTROPHY

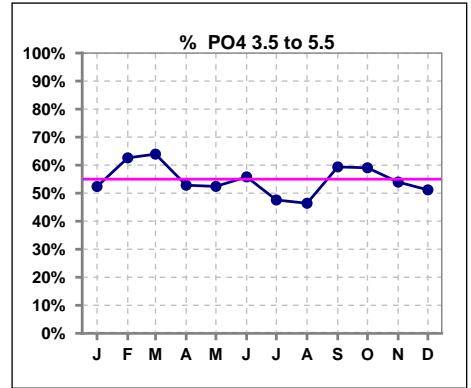
	Jan	Feb	Mar	Apr	May	Jun	Jul	Aug	Sep	Oct	Nov	Dec
# PO4	126	123	122	123	124	129	124	125	128	127	126	127
# PO4 < 5.5	70	82	85	66	71	77	65	59	77	82	76	72
Pop. Mean	5.2	4.9	5.1	5.3	5.3	5.2	5.4	5.5	5.3	5.2	5.4	5.3
Std. Deviation	1.29	1.21	1.56	1.18	1.45	1.26	1.27	1.30	1.45	1.44	1.54	1.32
% PO4 < 5.5	56%	67%	70%	54%	57%	60%	52%	47%	60%	65%	60%	57%



	Jan	Feb	Mar	Apr	May	Jun	Jul	Aug	Sep	Oct	Nov	Dec
# PO4	126	123	122	123	124	129	124	125	128	127	126	127
# PO4 > 3.5	114	107	108	117	113	119	113	122	118	113	115	118
Pop. Mean	5.2	4.9	5.1	5.3	5.3	5.2	5.4	5.5	5.3	5.2	5.4	5.3
Std. Deviation	1.29	1.21	1.56	1.18	1.45	1.26	1.27	1.30	1.45	1.44	1.54	1.32
% PO4 > 3.5	90%	87%	89%	95%	91%	92%	91%	98%	92%	89%	91%	93%



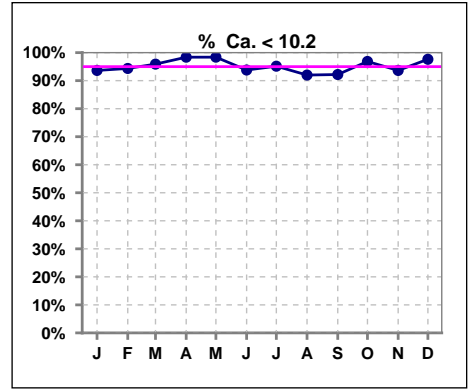
	Jan	Feb	Mar	Apr	May	Jun	Jul	Aug	Sep	Oct	Nov	Dec
# PO4	126	123	122	123	124	129	124	125	128	127	126	127
# PO4 3.5 to 5.5	66	77	78	65	65	72	59	58	76	75	68	65
Pop. Mean	5.2	4.9	5.1	5.3	5.3	5.2	5.4	5.5	5.3	5.2	5.4	5.3
Std. Deviation	1.29	1.21	1.56	1.18	1.45	1.26	1.27	1.30	1.45	1.44	1.54	1.32
% PO4 3.5 to 5.5	52%	63%	64%	53%	52%	56%	48%	46%	59%	59%	54%	51%



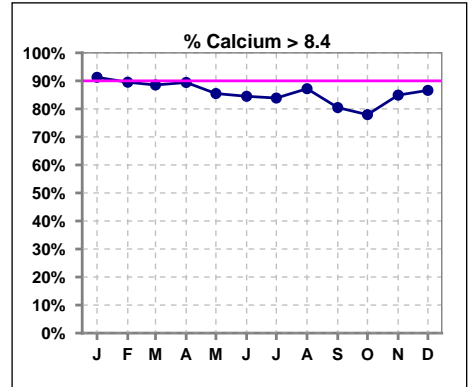
Methodology: a) All labs for 'Adequacy of Dialysis', 'Nutrition', 'Osteodystrophy', 'Anemia' and 'Diabetes' based on last value of month; b) BP's and #L processed are average of all values for month; c) Access data takes last access of month; d) Values for SGA and 'Infection Control' use most recent result.

III. OSTEODYSTROPHY - CONT.

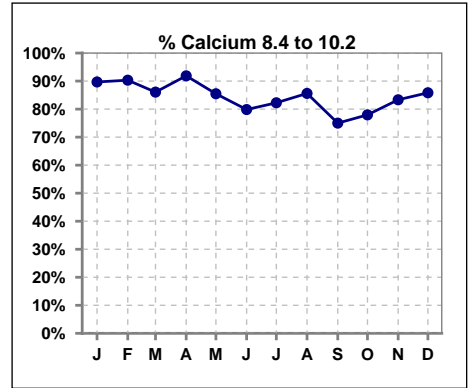
	Jan	Feb	Mar	Apr	May	Jun	Jul	Aug	Sep	Oct	Nov	Dec
# Calcium	126	124	122	123	124	129	124	125	128	127	126	127
# Calcium < 10.2	118	117	117	121	122	121	118	115	118	123	118	124
Pop. Mean	9.3	9.2	9.2	9.2	9.1	9.2	9.2	9.2	9.1	9.0	9.2	9.2
Std. Deviation	0.60	0.68	0.64	0.58	0.59	0.73	0.70	0.68	0.81	0.68	0.71	0.70
% Ca < 10.2	94%	94%	96%	98%	98%	94%	95%	92%	92%	97%	94%	98%



	Jan	Feb	Mar	Apr	May	Jun	Jul	Aug	Sep	Oct	Nov	Dec
# Calcium	126	124	122	123	124	129	124	125	128	127	126	127
# Calcium > 8.4	115	111	108	110	106	109	104	109	103	99	107	110
Pop. Mean	9.3	9.2	9.2	9.2	9.1	9.2	9.2	9.2	9.1	9.0	9.2	9.2
Std. Deviation	0.60	0.68	0.64	0.58	0.59	0.73	0.70	0.68	0.81	0.68	0.71	0.70
% Calcium > 8.4	91%	90%	89%	89%	85%	84%	84%	87%	80%	78%	85%	87%



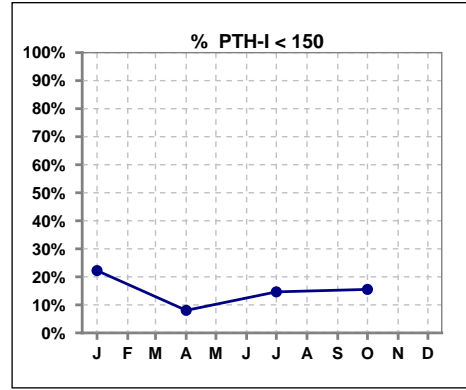
	Jan	Feb	Mar	Apr	May	Jun	Jul	Aug	Sep	Oct	Nov	Dec
# Calcium	126	124	122	123	124	129	124	125	128	127	126	127
# Calcium 8.4 to 10.2	113	112	105	113	106	103	102	107	96	99	105	109
Pop. Mean	9.3	9.2	9.2	9.2	9.1	9.2	9.2	9.2	9.1	9.0	9.2	9.2
Std. Deviation	0.60	0.68	0.64	0.58	0.59	0.73	0.70	0.68	0.81	0.68	0.71	0.70
% Calcium 8.4 to 10.2	90%	90%	86%	92%	85%	80%	82%	86%	75%	78%	83%	86%



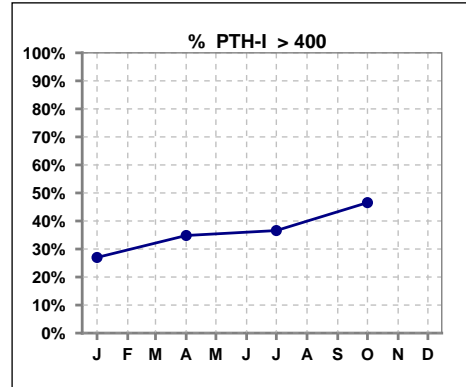
Methodology: a) All labs for 'Adequacy of Dialysis', 'Nutrition', 'Osteodystrophy', 'Anemia' and 'Diabetes' based on last value of month; b) BP's and #L processed are average of all values for month; c) Access data takes last access of month; d) Values for SGA and 'Infection Control' use most recent result.

III. OSTEODYSTROPHY - CONT.

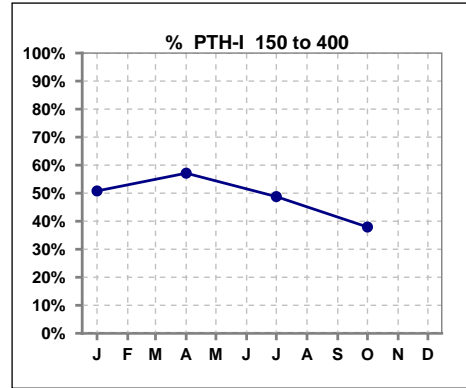
	Jan	Feb	Mar	Apr	May	Jun	Jul	Aug	Sep	Oct	Nov	Dec
# PTH-I	126			112			123			116		
# PTH-I < 150	28			9			18			18		
Pop. Mean	355			473			413			474		
Std. Deviation	315			468			393			369		
% PTH-I < 150	22%			8%			15%			16%		



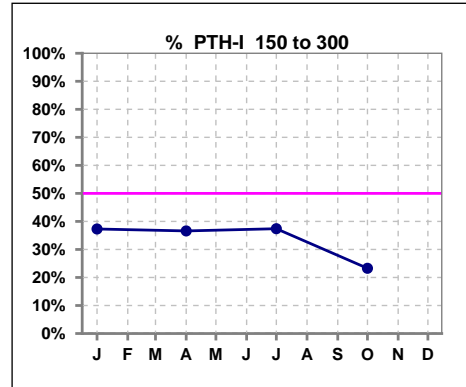
	Jan	Feb	Mar	Apr	May	Jun	Jul	Aug	Sep	Oct	Nov	Dec
# PTH-I	126			112			123			116		
# PTH-I > 400	34			39			45			54		
Pop. Mean	355			473			413			474		
Std. Deviation	315			468			393			369		
% PTH-I > 400	27%			35%			37%			47%		



	Jan	Feb	Mar	Apr	May	Jun	Jul	Aug	Sep	Oct	Nov	Dec
# PTH-I	126			112			123			116		
# PTH-I 150 to 400	64			64			60			44		
Pop. Mean	355			473			413			474		
Std. Deviation	315			468			393			369		
% PTH-I 150 to 400	51%			57%			49%			38%		



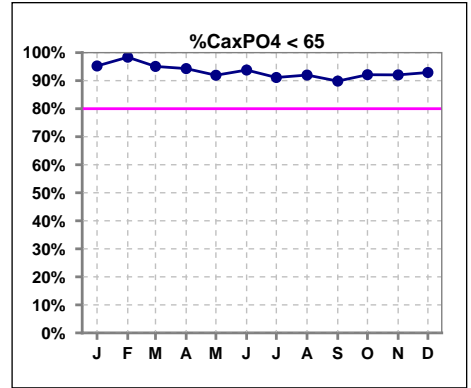
	Jan	Feb	Mar	Apr	May	Jun	Jul	Aug	Sep	Oct	Nov	Dec
# PTH-I	126			112			123			116		
# PTH-I 150 to 300	47			41			46			27		
Pop. Mean	355			473			413			474		
Std. Deviation	315			468			393			369		
% PTH-I 150 to 300	37%			37%			37%			23%		



Methodology: a) All labs for 'Adequacy of Dialysis', 'Nutrition', 'Osteodystrophy', 'Anemia' and 'Diabetes' based on last value of month; b) BP's and #L processed are average of all values for month; c) Access data takes last access of month; d) Values for SGA and 'Infection Control' use most recent result.

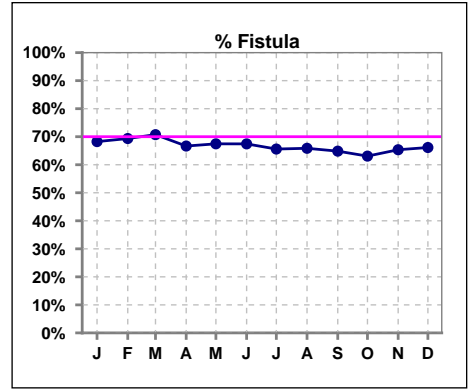
III. OSTEODYSTROPHY - CONT.

	Jan	Feb	Mar	Apr	May	Jun	Jul	Aug	Sep	Oct	Nov	Dec
# Ca x PO4	126	123	122	123	124	129	124	125	128	127	126	127
# Ca x PO4 < 65	120	121	116	116	114	121	113	115	115	117	116	118
Pop. Mean	48.0	44.5	46.7	45.7	48.6	48.0	49.1	50.6	48.2	46.6	49.3	48.3
Std. Deviation	11.7	11.8	14.8	14.8	13.0	11.8	11.7	12.2	12.7	12.5	13.3	10.9
% Ca x PO4 < 65	95%	98%	95%	94%	92%	94%	91%	92%	90%	92%	92%	93%

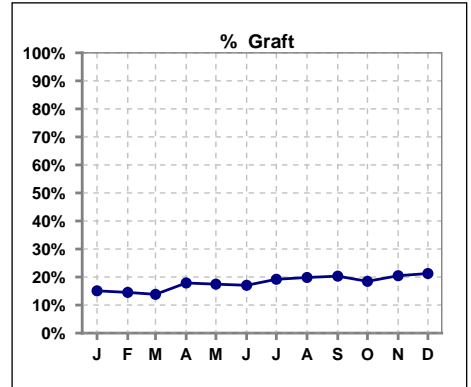


IV. ACCESS

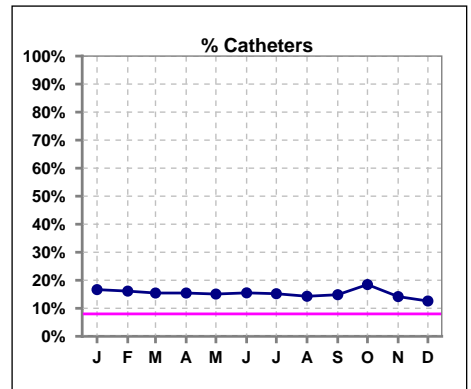
	Jan	Feb	Mar	Apr	May	Jun	Jul	Aug	Sep	Oct	Nov	Dec
# Access	126	124	123	123	126	129	125	126	128	130	127	127
# Fistula	86	86	87	82	85	87	82	83	83	82	83	84
% Fistula	68%	69%	71%	67%	67%	67%	66%	66%	65%	63%	65%	66%



	Jan	Feb	Mar	Apr	May	Jun	Jul	Aug	Sep	Oct	Nov	Dec
# Access	126	124	123	123	126	129	125	126	128	130	127	127
# Graft	19	18	17	22	22	22	24	25	26	24	26	27
% Graft	15%	15%	14%	18%	17%	17%	19%	20%	20%	18%	20%	21%



	Jan	Feb	Mar	Apr	May	Jun	Jul	Aug	Sep	Oct	Nov	Dec
# Access	126	124	123	123	126	129	125	126	128	130	127	127
# Catheters	21	20	19	19	19	20	19	18	19	24	18	16
% Catheters	17%	16%	15%	15%	15%	16%	15%	14%	15%	18%	14%	13%

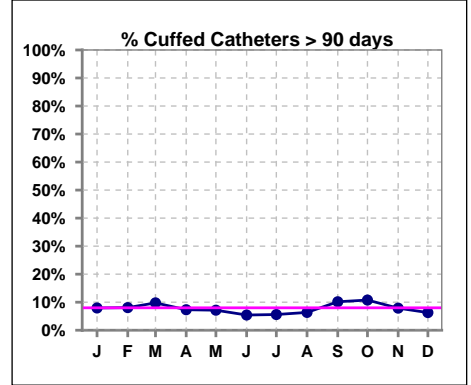


Methodology: a) All labs for 'Adequacy of Dialysis', 'Nutrition', 'Osteodystrophy', 'Anemia' and 'Diabetes' based on last value of month; b) BP's and #L processed are average of all values for month; c) Access data takes last access of month; d) Values for SGA and 'Infection Control' use most recent result.

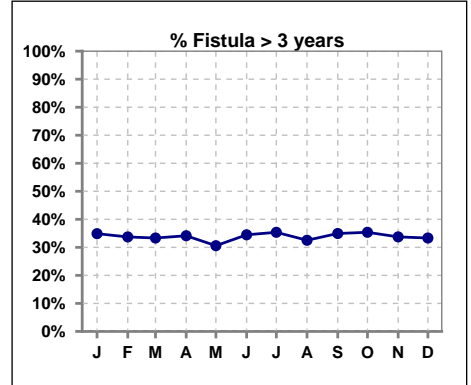
IV. ACCESS - CONT.

Cuffed Catheters > 90 days

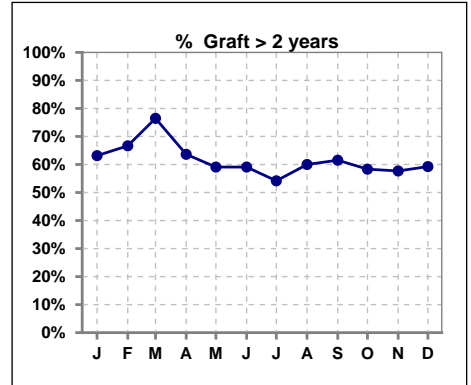
	Jan	Feb	Mar	Apr	May	Jun	Jul	Aug	Sep	Oct	Nov	Dec
# Access	126	124	123	123	126	129	125	126	128	130	127	127
# Cuffed Catheters	10	10	12	9	9	7	7	8	13	14	10	8
% Cuffed Catheters	8%	8%	10%	7%	7%	5%	6%	6%	10%	11%	8%	6%



	Jan	Feb	Mar	Apr	May	Jun	Jul	Aug	Sep	Oct	Nov	Dec
# Fistula	86	86	87	82	85	87	82	83	83	82	83	84
# Fistula > 3 yrs	30	29	29	28	26	30	29	27	29	29	28	28
% Fistula > 3 yrs	35%	34%	33%	34%	31%	34%	35%	33%	35%	35%	34%	33%



	Jan	Feb	Mar	Apr	May	Jun	Jul	Aug	Sep	Oct	Nov	Dec
# Graft	19	18	17	22	22	22	24	25	26	24	26	27
# Graft > 2 yrs	12	12	13	14	13	13	13	15	16	14	15	16
% Graft > 2 yrs	63%	67%	76%	64%	59%	59%	54%	60%	62%	58%	58%	59%

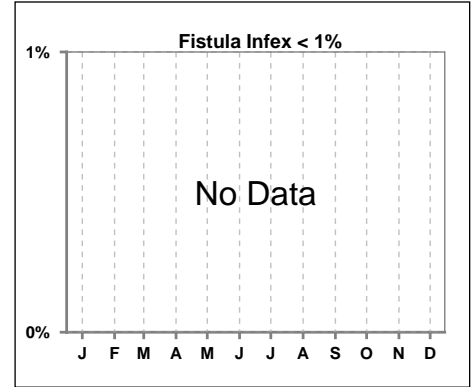


Methodology: a) All labs for 'Adequacy of Dialysis', 'Nutrition', 'Osteodystrophy', 'Anemia' and 'Diabetes' based on last value of month; b) BP's and #L processed are average of all values for month; c) Access data takes last access of month; d) Values for SGA and 'Infection Control' use most recent result.

IV. ACCESS - CONT.

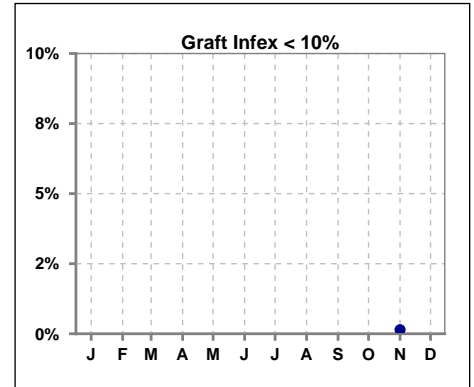
Infection per use-life of access fistula

	Jan	Feb	Mar	Apr	May	Jun	Jul	Aug	Sep	Oct	Nov	Dec
Infex per use-life												



Infection per use-life of access graft

	Jan	Feb	Mar	Apr	May	Jun	Jul	Aug	Sep	Oct	Nov	Dec
Infex per use-life												0.1438



Thrombosis Episode - access fistula

	Jan	Feb	Mar	Apr	May	Jun	Jul	Aug	Sep	Oct	Nov	Dec
Current Month						0.07		0.04	0.03			0.02
Rolling Year-to-date						0.02	0.02	0.02	0.03	0.02	0.01	0.01

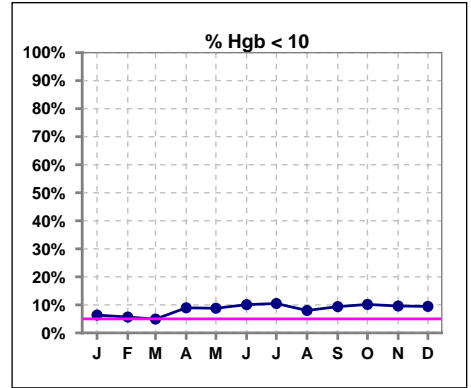
Thrombosis Episode - access graft

	Jan	Feb	Mar	Apr	May	Jun	Jul	Aug	Sep	Oct	Nov	Dec
Current Month									0.31	0.09	0.07	
Rolling Year-to-date									0.07	0.06	0.06	0.05

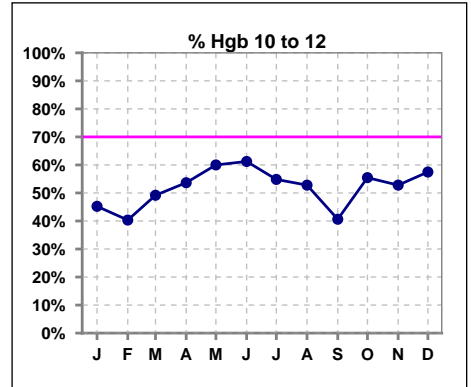
Methodology: a) All labs for 'Adequacy of Dialysis', 'Nutrition', 'Osteodystrophy', 'Anemia' and 'Diabetes' based on last value of month; b) BP's and #L processed are average of all values for month; c) Access data takes last access of month; d) Values for SGA and 'Infection Control' use most recent result.

V. ANEMIA

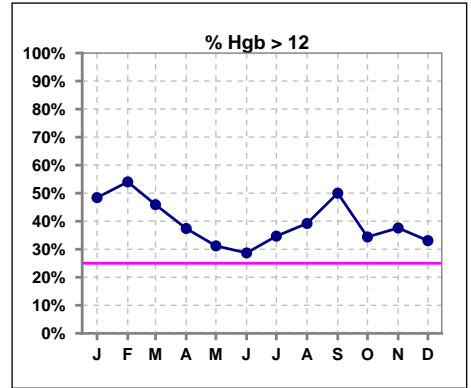
	Jan	Feb	Mar	Apr	May	Jun	Jul	Aug	Sep	Oct	Nov	Dec
# Hgb	126	124	122	123	125	129	124	125	128	128	125	127
# Hgb < 10	8	7	6	11	11	13	13	10	12	13	12	12
Pop. Mean	11.9	12.0	12.0	11.6	11.5	11.4	11.6	11.8	11.8	11.6	11.7	11.5
Std. Deviation	1.2	1.3	1.1	1.4	1.3	1.1	1.3	1.3	1.3	1.2	1.3	1.4
% Hgb < 10	6%	6%	5%	9%	9%	10%	10%	8%	9%	10%	10%	9%



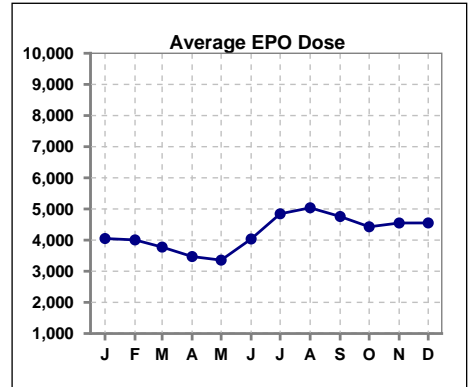
	Jan	Feb	Mar	Apr	May	Jun	Jul	Aug	Sep	Oct	Nov	Dec
# Hgb	126	124	122	123	125	129	124	125	128	128	125	127
# Hgb 10 to 12	57	50	60	66	75	79	68	66	52	71	66	73
Pop. Mean	11.9	12.0	12.0	11.6	11.5	11.4	11.6	11.8	11.8	11.6	11.7	11.5
Std. Deviation	1.2	1.3	1.1	1.4	1.3	1.1	1.3	1.3	1.3	1.2	1.3	1.4
% Hgb 10 to 12	45%	40%	49%	54%	60%	61%	55%	53%	41%	55%	53%	57%



	Jan	Feb	Mar	Apr	May	Jun	Jul	Aug	Sep	Oct	Nov	Dec
# Hgb	126	124	122	123	125	129	124	125	128	128	125	127
# Hgb > 12	61	67	56	46	39	37	43	49	64	44	47	42
Pop. Mean	11.9	12.0	12.0	11.6	11.5	11.4	11.6	11.8	11.8	11.6	11.7	11.5
Std. Deviation	1.2	1.3	1.1	1.4	1.3	1.1	1.3	1.3	1.3	1.2	1.3	1.4
% Hgb > 12	48%	54%	46%	37%	31%	29%	35%	39%	50%	34%	38%	33%



	Jan	Feb	Mar	Apr	May	Jun	Jul	Aug	Sep	Oct	Nov	Dec
# Average EPO Dose	4050	4006	3776	3471	3356	4036	4844	5037	4757	4428	4549	4551

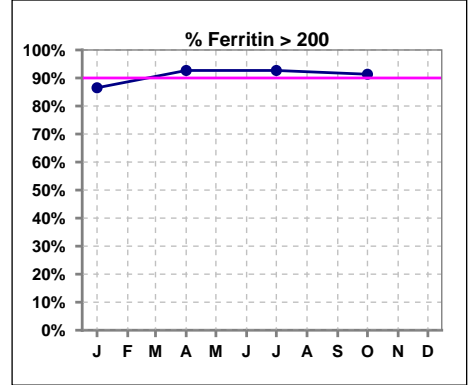


Methodology: a) All labs for 'Adequacy of Dialysis', 'Nutrition', 'Osteodystrophy', 'Anemia' and 'Diabetes' based on last value of month; b) BP's and #L processed are average of all values for month; c) Access data takes last access of month; d) Values for SGA and 'Infection Control' use most recent result.

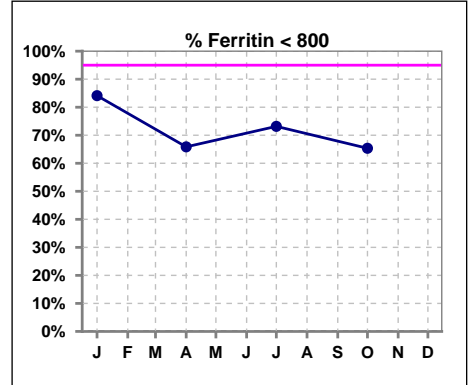
V. ANEMIA - CONT.

Iron Profile

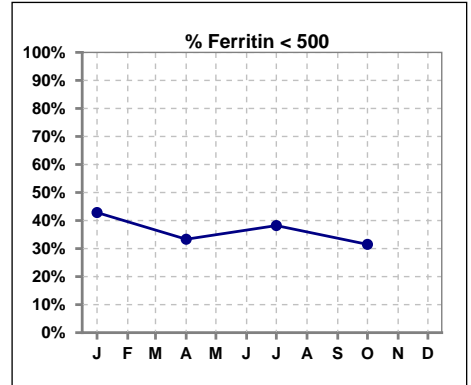
	Jan	Feb	Mar	Apr	May	Jun	Jul	Aug	Sep	Oct	Nov	Dec
# Ferritin	126			123			123			127		
# Ferritin > 200	109			114			114			116		
Pop. Mean	556			662			661			679		
Std. Deviation	301			337			622			342		
% Ferritin > 200	87%			93%			93%			91%		



	Jan	Feb	Mar	Apr	May	Jun	Jul	Aug	Sep	Oct	Nov	Dec
# Ferritin	126			123			123			127		
# Ferritin < 800	106			81			90			83		
Pop. Mean	556			662			661			679		
Std. Deviation	301			337			622			342		
% Ferritin < 800	84%			66%			73%			65%		



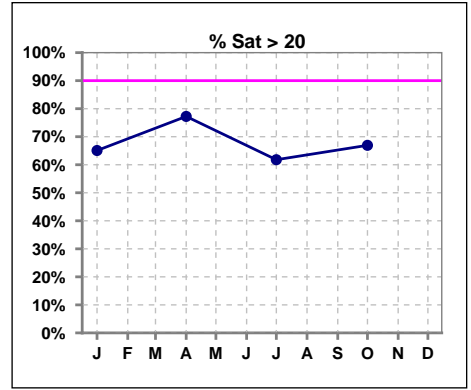
	Jan	Feb	Mar	Apr	May	Jun	Jul	Aug	Sep	Oct	Nov	Dec
# Ferritin	126			123			123			127		
# Ferritin < 500	54			41			47			40		
Pop. Mean	556			662			661			679		
Std. Deviation	301			337			622			342		
% Ferritin < 500	43%			33%			38%			31%		



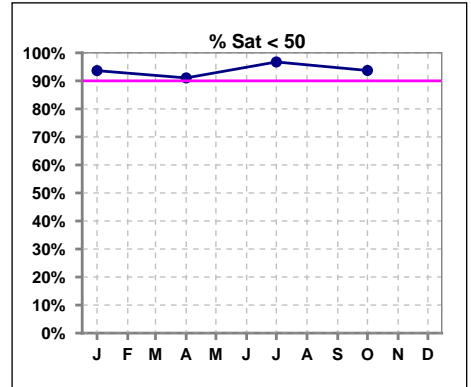
Methodology: a) All labs for 'Adequacy of Dialysis', 'Nutrition', 'Osteodystrophy', 'Anemia' and 'Diabetes' based on last value of month; b) BP's and #L processed are average of all values for month; c) Access data takes last access of month; d) Values for SGA and 'Infection Control' use most recent result.

V. ANEMIA - CONT.

	Jan	Feb	Mar	Apr	May	Jun	Jul	Aug	Sep	Oct	Nov	Dec
# % Sat	126			123			123			127		
# % Sat > 20	82			95			76			85		
Pop. Mean	27			30			26			28		
Std. Deviation	14			14			12			14		
% Sat% > 20	65%			77%			62%			67%		



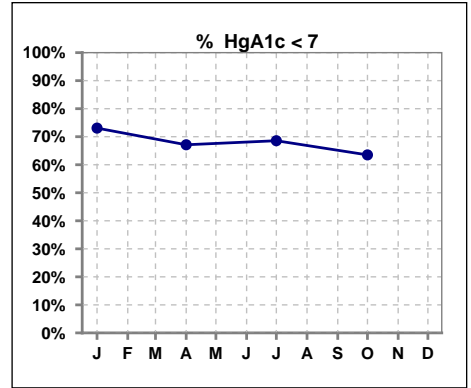
	Jan	Feb	Mar	Apr	May	Jun	Jul	Aug	Sep	Oct	Nov	Dec
# % Sat	126			123			123			127		
# % Sat < 50	118			112			119			119		
Pop. Mean	27			30			26			28		
Std. Deviation	14			14			12			14		
% Sat% < 50	94%			91%			97%			94%		



Methodology: a) All labs for 'Adequacy of Dialysis', 'Nutrition', 'Osteodystrophy', 'Anemia' and 'Diabetes' based on last value of month; b) BP's and #L processed are average of all values for month; c) Access data takes last access of month; d) Values for SGA and 'Infection Control' use most recent result.

VI. Diabetes

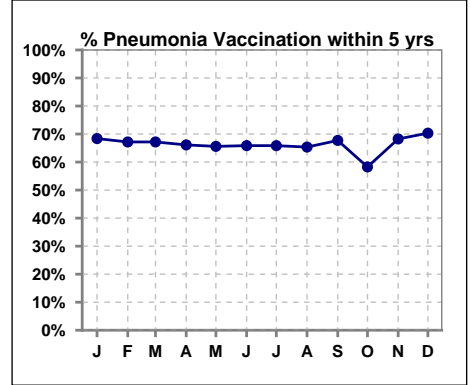
	Jan	Feb	Mar	Apr	May	Jun	Jul	Aug	Sep	Oct	Nov	Dec
# HgA1c	78			73			70			74		
# HgA1c < 7	57			49			48			47		
Pop. Mean	6.5			6.8			6.6			6.9		
Std. Deviation	1.26			1.28			1.23			1.32		
% HgA1c < 7	73%			67%			69%			64%		



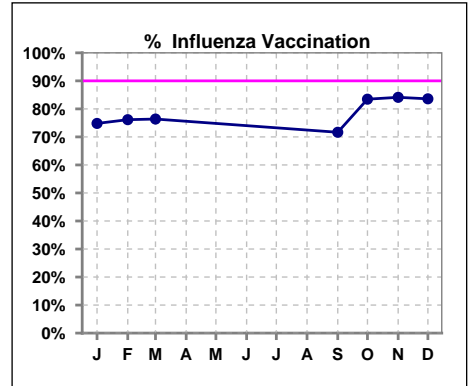
VII. Infection Control

Pneumonia vaccination within the past five years

	Jan	Feb	Mar	Apr	May	Jun	Jul	Aug	Sep	Oct	Nov	Dec
# Patient	136	131	128	124	125	126	123	127	127	127	126	128
# Pneumonia	93	88	86	82	82	83	81	83	86	74	86	90
% Pneumonia	68%	67%	67%	66%	66%	66%	66%	65%	68%	58%	68%	70%



	Jan	Feb	Mar	Apr	May	Jun	Jul	Aug	Sep	Oct	Nov	Dec
# Patient	135	130	127						127	127	126	128
# Influenza	101	99	97						91	106	106	107
% Influenza	75%	76%	76%						72%	83%	84%	84%



Methodology: a) All labs for 'Adequacy of Dialysis', 'Nutrition', 'Osteodystrophy', 'Anemia' and 'Diabetes' based on last value of month; b) BP's and #L processed are average of all values for month; c) Access data takes last access of month; d) Values for SGA and 'Infection Control' use most recent result.