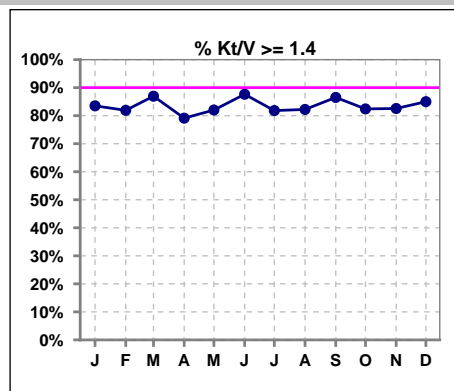
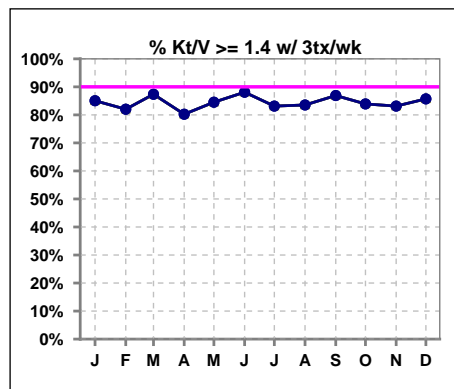


I. ADEQUACY OF DIALYSIS

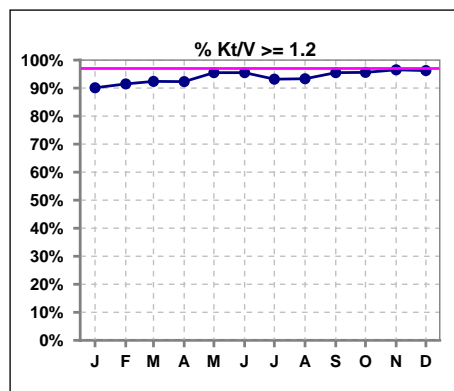
	Jan	Feb	Mar	Apr	May	Jun	Jul	Aug	Sep	Oct	Nov	Dec
# Kt/V	91	94	92	91	89	89	88	90	89	91	86	80
# Kt/V >= 1.4	76	77	80	72	73	78	72	74	77	75	71	68
Pop. Mean	1.59	1.61	1.66	1.62	1.61	1.66	1.68	1.62	1.67	1.70	1.62	1.65
Std. Deviation	0.33	0.31	0.33	0.31	0.27	0.39	0.47	0.36	0.38	0.61	0.26	0.32
% Kt/V >= 1.4	84%	82%	87%	79%	82%	88%	82%	82%	87%	82%	83%	85%



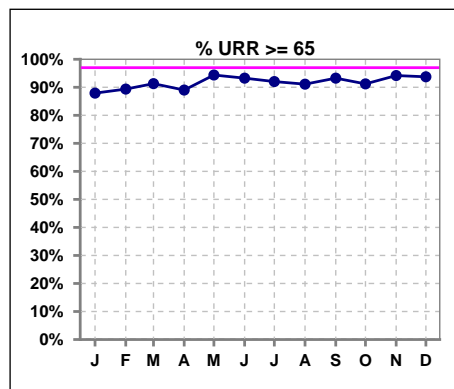
	Jan	Feb	Mar	Apr	May	Jun	Jul	Aug	Sep	Oct	Nov	Dec
# Kt/V w/ 3tx/wk	87	89	87	86	84	84	83	85	84	87	83	77
# Kt/V >= 1.4 w/ 3tx/wk	74	73	76	69	71	74	69	71	73	73	69	66
Pop. Mean	1.61	1.61	1.65	1.61	1.61	1.63	1.65	1.59	1.64	1.68	1.63	1.65
Std. Deviation	0.32	0.30	0.32	0.29	0.26	0.25	0.34	0.25	0.24	0.57	0.26	0.32
% Kt/V >= 1.4 w/ 3tx/wk	85%	82%	87%	80%	85%	88%	83%	84%	87%	84%	83%	86%



	Jan	Feb	Mar	Apr	May	Jun	Jul	Aug	Sep	Oct	Nov	Dec
# Kt/V	91	94	92	91	89	89	88	90	89	91	86	80
# Kt/V >= 1.2	82	86	85	84	85	85	82	84	85	87	83	77
Pop. Mean	1.59	1.61	1.66	1.62	1.61	1.66	1.68	1.62	1.67	1.70	1.62	1.65
Std. Deviation	0.33	0.31	0.33	0.31	0.27	0.39	0.47	0.36	0.38	0.61	0.26	0.32
% Kt/V >= 1.2	90%	91%	92%	92%	96%	96%	93%	93%	96%	96%	97%	96%



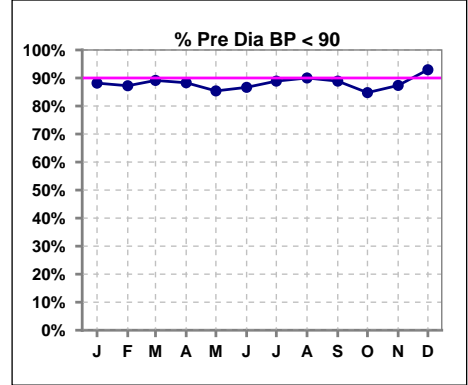
	Jan	Feb	Mar	Apr	May	Jun	Jul	Aug	Sep	Oct	Nov	Dec
# URR	91	94	92	91	89	89	88	90	89	91	86	80
# URR >= 65	80	84	84	81	84	83	81	82	83	83	81	75
Pop. Mean	74	74	75	74	74	75	75	74	75	75	75	75
Std. Deviation	8.28	7.39	6.99	7.00	6.80	6.30	7.49	6.31	5.81	6.91	5.91	7.26
% URR >= 65	88%	89%	91%	89%	94%	93%	92%	91%	93%	91%	94%	94%



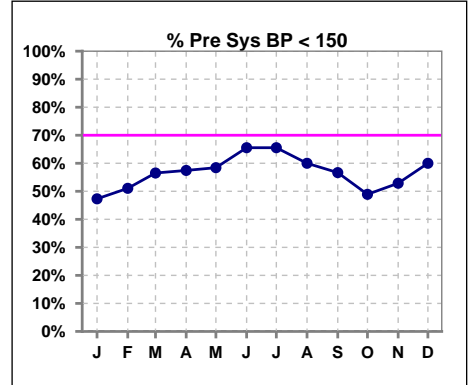
I. ADEQUACY OF DIALYSIS - CONT.

Blood Pressure Control (Pre)

	Jan	Feb	Mar	Apr	May	Jun	Jul	Aug	Sep	Oct	Nov	Dec
# Pre Dia BP	93	94	92	94	89	90	90	90	90	92	87	85
# Pre Dia BP < 90	82	82	82	83	76	78	80	81	80	78	76	79
Pop. Mean	74	74	74	73	74	74	73	74	75	75	74	73
Std. Deviation	13.5	14.0	13.4	13.7	14.8	14.7	13.8	13.2	13.3	14.6	13.0	13.1
% Pre Dia BP < 90	88%	87%	89%	88%	85%	87%	89%	90%	89%	85%	87%	93%



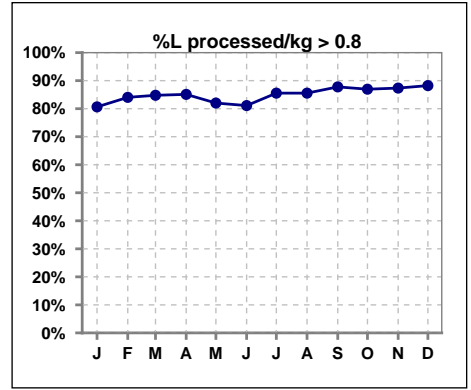
	Jan	Feb	Mar	Apr	May	Jun	Jul	Aug	Sep	Oct	Nov	Dec
# Pre Sys BP	93	94	92	94	89	90	90	90	90	92	87	85
# Pre Sys BP < 150	44	48	52	54	52	59	59	54	51	45	46	51
Pop. Mean	149	150	147	146	148	146	145	147	147	147	148	147
Std. Deviation	18.9	22.7	21.4	20.3	21.6	21.0	20.8	20.7	21.5	22.4	22.2	22.5
%Pre Sys BP <150	47%	51%	57%	57%	58%	66%	66%	60%	57%	49%	53%	60%



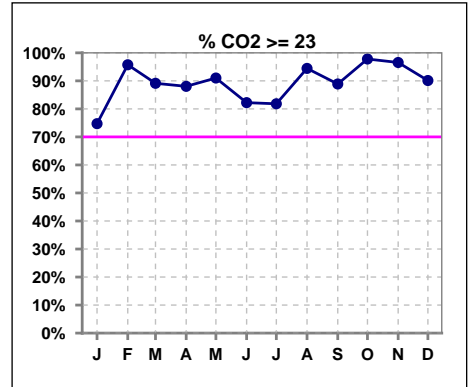
Methodology: a) All labs for 'Adequacy of Dialysis', 'Nutrition', 'Osteodystrophy', 'Anemia' and 'Diabetes' based on last value of month; b) BP's and #L processed are average of all values for month; c) Access data takes last access of month; d) Values for SGA and 'Infection Control' use most recent result.

I. ADEQUACY OF DIALYSIS - CONT.

	Jan	Feb	Mar	Apr	May	Jun	Jul	Aug	Sep	Oct	Nov	Dec
# L processed/kg	93	94	92	94	89	90	90	90	90	92	87	85
# L processed/kg>0.8	75	79	78	80	73	73	77	77	79	80	76	75
Pop. Mean	1	1	1	1	1	1	1	1	1	1	1	1
Std. Deviation	0.3	0.3	0.3	0.3	0.3	0.3	0.3	0.3	0.3	0.3	0.3	0.3
% L processed/kg>0.8	81%	84%	85%	85%	82%	81%	86%	86%	88%	87%	87%	88%



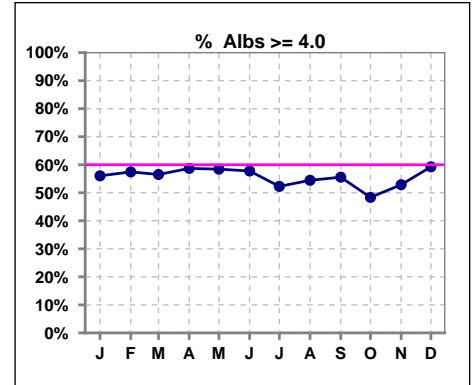
	Jan	Feb	Mar	Apr	May	Jun	Jul	Aug	Sep	Oct	Nov	Dec
# CO2	91	94	92	92	89	90	88	90	90	91	87	81
# CO2 >= 23	68	90	82	81	81	74	72	85	80	89	84	73
Pop. Mean	24	27	26	26	27	25	25	27	26	27	27	27
Std. Deviation	3.38	2.42	2.87	2.89	2.76	2.82	2.95	2.70	2.81	2.59	2.51	3.17
% CO2 >= 23	75%	96%	89%	88%	91%	82%	82%	94%	89%	98%	97%	90%



*Albumin values use BCG method - as of July 2001

II. NUTRITION

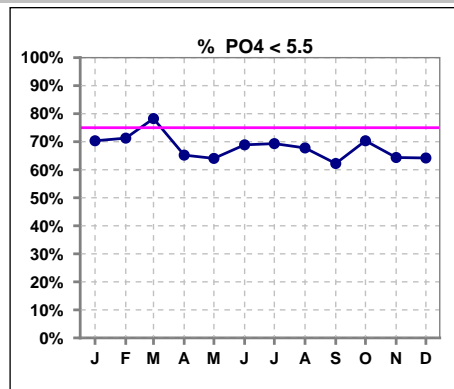
	Jan	Feb	Mar	Apr	May	Jun	Jul	Aug	Sep	Oct	Nov	Dec
# Albumin	91	94	92	92	89	90	88	90	90	91	87	81
# Albumin >= 4.0	51	54	52	54	52	52	46	49	50	44	46	48
Pop. Mean	4.0	4.0	4.0	4.0	4.0	3.9	3.9	4.0	4.0	3.9	4.0	4.0
Std. Deviation	0.31	0.33	0.32	0.37	0.36	0.38	0.37	0.37	0.33	0.35	0.38	0.38
% Alb >= 3.5	93%	95%	93%	92%	89%	92%	91%	90%	92%	88%	91%	88%
% Alb >= 3.0	100%	99%	100%	98%	99%	98%	98%	100%	100%	100%	99%	99%
% Alb >= 4.0	56%	57%	57%	59%	58%	58%	52%	54%	56%	48%	53%	59%



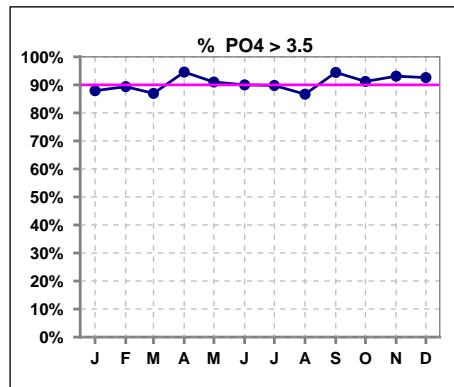
Methodology: a) All labs for 'Adequacy of Dialysis', 'Nutrition', 'Osteodystrophy', 'Anemia' and 'Diabetes' based on last value of month; b) BP's and #L processed are average of all values for month; c) Access data takes last access of month; d) Values for SGA and 'Infection Control' use most recent result.

III. OSTEODYSTROPHY

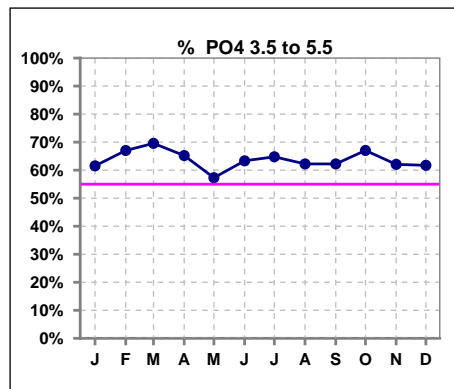
	Jan	Feb	Mar	Apr	May	Jun	Jul	Aug	Sep	Oct	Nov	Dec
# PO4	91	94	92	92	89	90	88	90	90	91	87	81
# PO4 < 5.5	64	67	72	60	57	62	61	61	56	64	56	52
Pop. Mean	5.1	5.0	4.9	5.3	5.1	5.3	5.1	5.1	5.3	5.1	5.1	5.4
Std. Deviation	1.57	1.55	1.36	1.62	1.51	1.76	1.38	1.63	1.53	1.56	1.34	1.64
% PO4 < 5.5	70%	71%	78%	65%	64%	69%	69%	68%	62%	70%	64%	64%



	Jan	Feb	Mar	Apr	May	Jun	Jul	Aug	Sep	Oct	Nov	Dec
# PO4	91	94	92	92	89	90	88	90	90	91	87	81
# PO4 > 3.5	80	84	80	87	81	81	79	78	85	83	81	75
Pop. Mean	5.1	5.0	4.9	5.3	5.1	5.3	5.1	5.1	5.3	5.1	5.1	5.4
Std. Deviation	1.57	1.55	1.36	1.62	1.51	1.76	1.38	1.63	1.53	1.56	1.34	1.64
% PO4 > 3.5	88%	89%	87%	95%	91%	90%	90%	87%	94%	91%	93%	93%

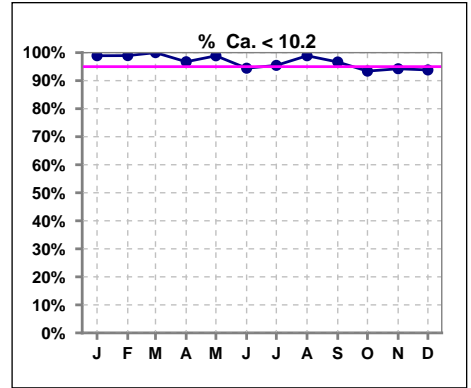


	Jan	Feb	Mar	Apr	May	Jun	Jul	Aug	Sep	Oct	Nov	Dec
# PO4	91	94	92	92	89	90	88	90	90	91	87	81
# PO4 3.5 to 5.5	56	63	64	60	51	57	57	56	56	61	54	50
Pop. Mean	5.1	5.0	4.9	5.3	5.1	5.3	5.1	5.1	5.3	5.1	5.1	5.4
Std. Deviation	1.57	1.55	1.36	1.62	1.51	1.76	1.38	1.63	1.53	1.56	1.34	1.64
% PO4 3.5 to 5.5	62%	67%	70%	65%	57%	63%	65%	62%	62%	67%	62%	62%

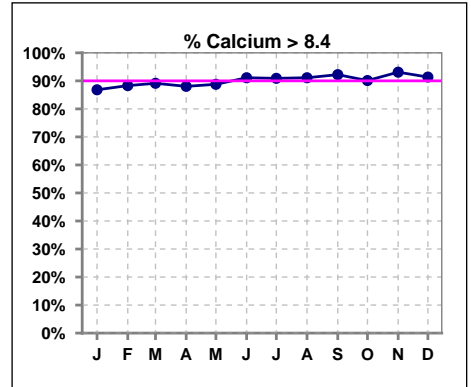


III. OSTEODYSTROPHY - CONT.

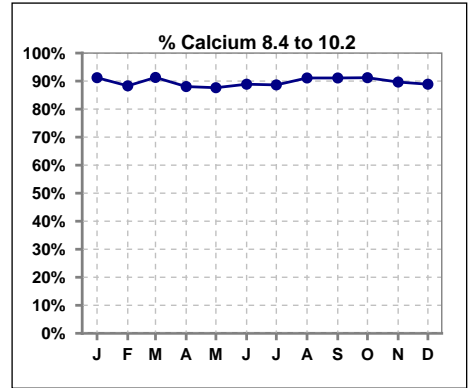
	Jan	Feb	Mar	Apr	May	Jun	Jul	Aug	Sep	Oct	Nov	Dec
# Calcium	91	94	92	92	89	90	88	90	90	91	87	81
# Calcium < 10.2	90	93	92	89	88	85	84	89	87	85	82	76
Pop. Mean	9.1	9.2	9.2	9.2	9.2	9.3	9.3	9.3	9.3	9.3	9.4	9.3
Std. Deviation	0.52	0.62	0.56	0.61	0.59	0.61	0.63	0.58	0.56	0.58	0.63	0.64
% Ca < 10.2	99%	99%	100%	97%	99%	94%	95%	99%	97%	93%	94%	94%



	Jan	Feb	Mar	Apr	May	Jun	Jul	Aug	Sep	Oct	Nov	Dec
# Calcium	91	94	92	92	89	90	88	90	90	91	87	81
# Calcium > 8.4	79	83	82	81	79	82	80	82	83	82	81	74
Pop. Mean	9.1	9.2	9.2	9.2	9.2	9.3	9.3	9.3	9.3	9.3	9.4	9.3
Std. Deviation	0.52	0.62	0.56	0.61	0.59	0.61	0.63	0.58	0.56	0.58	0.63	0.64
% Calcium > 8.4	87%	88%	89%	88%	89%	91%	91%	91%	92%	90%	93%	91%

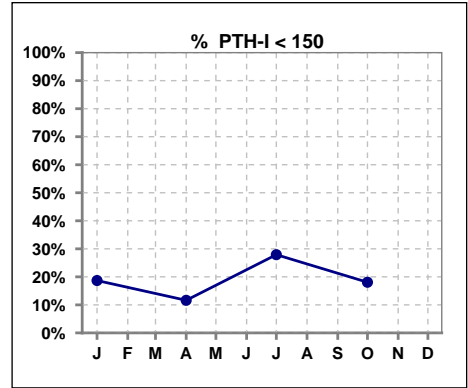


	Jan	Feb	Mar	Apr	May	Jun	Jul	Aug	Sep	Oct	Nov	Dec
# Calcium	91	94	92	92	89	90	88	90	90	91	87	81
# Calcium 8.4 to 10.2	83	83	84	81	78	80	78	82	82	83	78	72
Pop. Mean	9.1	9.2	9.2	9.2	9.2	9.3	9.3	9.3	9.3	9.3	9.4	9.3
Std. Deviation	0.52	0.62	0.56	0.61	0.59	0.61	0.63	0.58	0.56	0.58	0.63	0.64
% Calcium 8.4 to 10.2	91%	88%	91%	88%	88%	89%	89%	91%	91%	91%	90%	89%

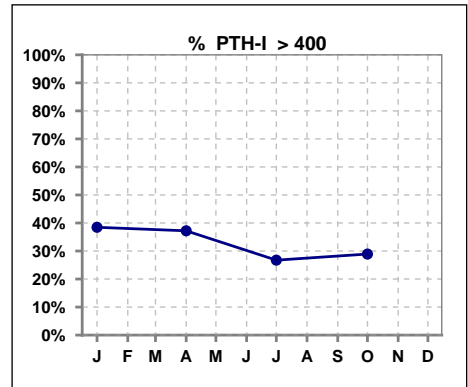


III. OSTEODYSTROPHY - CONT.

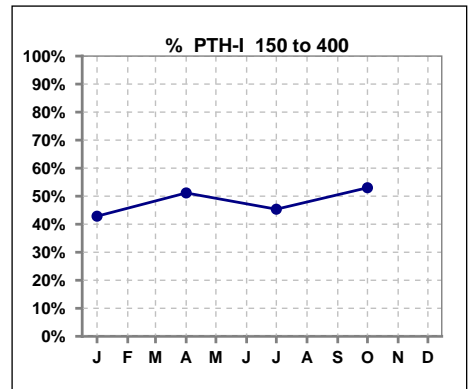
	Jan	Feb	Mar	Apr	May	Jun	Jul	Aug	Sep	Oct	Nov	Dec
# PTH-I	91			86			86			83		
# PTH-I < 150	17			10			24			15		
Pop. Mean	394			417			361			422		
Std. Deviation	316			342			444			482		
% PTH-I < 150	19%			12%			28%			18%		



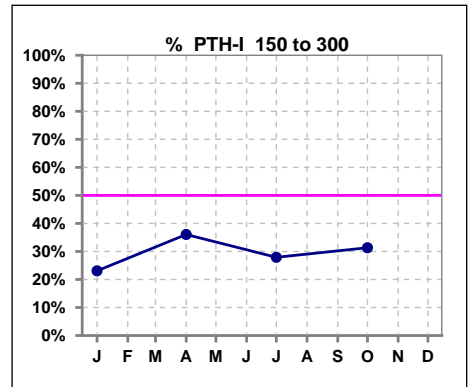
	Jan	Feb	Mar	Apr	May	Jun	Jul	Aug	Sep	Oct	Nov	Dec
# PTH-I	91			86			86			83		
# PTH-I > 400	35			32			23			24		
Pop. Mean	394			417			361			422		
Std. Deviation	316			342			444			482		
% PTH-I > 400	38%			37%			27%			29%		



	Jan	Feb	Mar	Apr	May	Jun	Jul	Aug	Sep	Oct	Nov	Dec
# PTH-I	91			86			86			83		
# PTH-I 150 to 400	39			44			39			44		
Pop. Mean	394			417			361			422		
Std. Deviation	316			342			444			482		
% PTH-I 150 to 400	43%			51%			45%			53%		



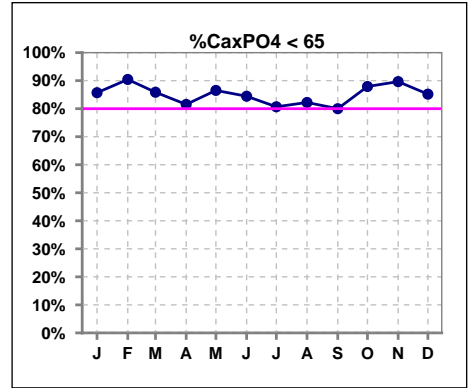
	Jan	Feb	Mar	Apr	May	Jun	Jul	Aug	Sep	Oct	Nov	Dec
# PTH-I	91			86			86			83		
# PTH-I 150 to 300	21			31			24			26		
Pop. Mean	394			417			361			422		
Std. Deviation	316			342			444			482		
% PTH-I 150 to 300	23%			36%			28%			31%		



Methodology: a) All labs for 'Adequacy of Dialysis', 'Nutrition', 'Osteodystrophy', 'Anemia' and 'Diabetes' based on last value of month; b) BP's and #L processed are average of all values for month; c) Access data takes last access of month; d) Values for SGA and 'Infection Control' use most recent result.

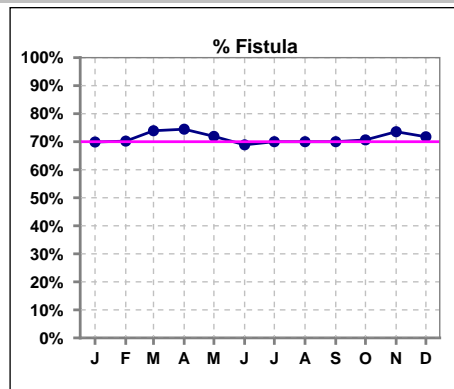
III. OSTEODYSTROPHY - CONT.

	Jan	Feb	Mar	Apr	May	Jun	Jul	Aug	Sep	Oct	Nov	Dec
# Ca x PO4	91	94	92	92	89	90	88	90	90	91	87	81
# Ca x PO4 < 65	78	85	79	75	77	76	71	74	72	80	78	69
Pop. Mean	49.2	46.5	48.2	51.3	49.8	51.3	52.5	50.9	52.7	49.4	49.0	51.8
Std. Deviation	16.4	15.1	14.4	15.4	15.4	15.6	17.7	18.1	18.4	15.8	13.2	15.6
% CaxPO4 < 65	86%	90%	86%	82%	87%	84%	81%	82%	80%	88%	90%	85%

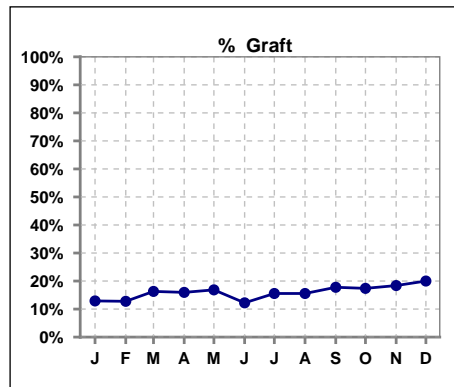


IV. ACCESS

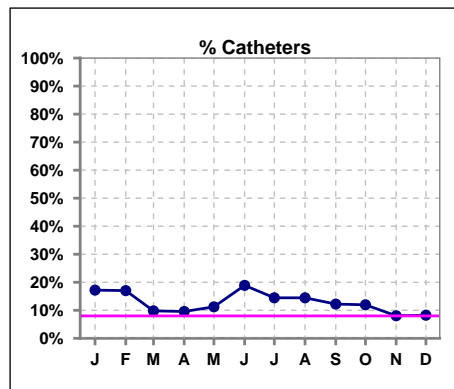
	Jan	Feb	Mar	Apr	May	Jun	Jul	Aug	Sep	Oct	Nov	Dec
# Access	93	94	92	94	89	90	90	90	90	92	87	85
# Fistula	65	66	68	70	64	62	63	63	63	65	64	61
% Fistula	70%	70%	74%	74%	72%	69%	70%	70%	70%	71%	74%	72%



	Jan	Feb	Mar	Apr	May	Jun	Jul	Aug	Sep	Oct	Nov	Dec
# Access	93	94	92	94	89	90	90	90	90	92	87	85
# Graft	12	12	15	15	15	11	14	14	16	16	16	17
% Graft	13%	13%	16%	16%	17%	12%	16%	16%	18%	17%	18%	20%



	Jan	Feb	Mar	Apr	May	Jun	Jul	Aug	Sep	Oct	Nov	Dec
# Access	93	94	92	94	89	90	90	90	90	92	87	85
# Catheters	16	16	9	9	10	17	13	13	11	11	7	7
% Catheters	17%	17%	10%	10%	11%	19%	14%	14%	12%	12%	8%	8%

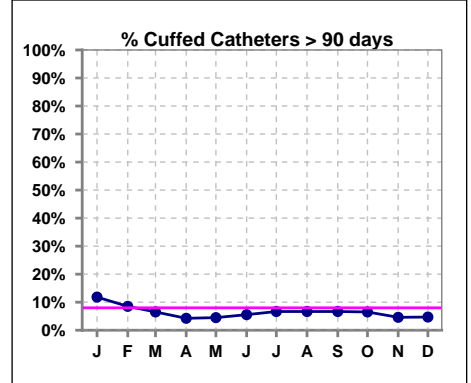


Methodology: a) All labs for 'Adequacy of Dialysis', 'Nutrition', 'Osteodystrophy', 'Anemia' and 'Diabetes' based on last value of month; b) BP's and #L processed are average of all values for month; c) Access data takes last access of month; d) Values for SGA and 'Infection Control' use most recent result.

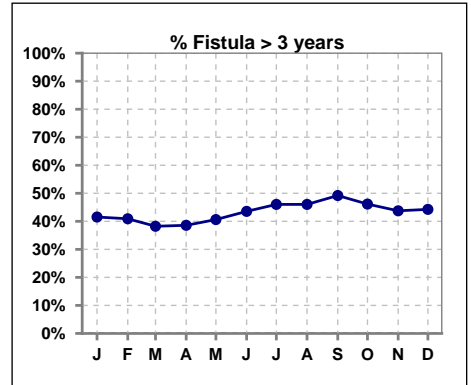
IV. ACCESS - CONT.

Cuffed Catheters > 90 days

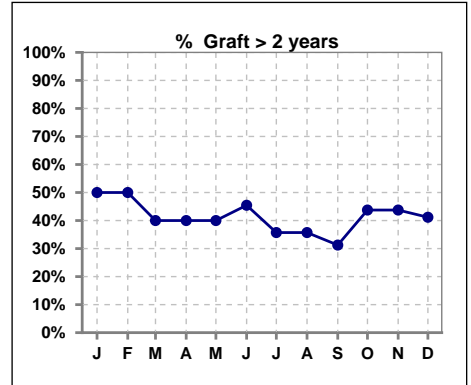
	Jan	Feb	Mar	Apr	May	Jun	Jul	Aug	Sep	Oct	Nov	Dec
# Access	93	94	92	94	89	90	90	90	90	92	87	85
# Cuffed Catheters	11	8	6	4	4	5	6	6	6	6	4	4
% Cuffed Catheters	12%	9%	7%	4%	4%	6%	7%	7%	7%	7%	5%	5%



	Jan	Feb	Mar	Apr	May	Jun	Jul	Aug	Sep	Oct	Nov	Dec
# Fistula	65	66	68	70	64	62	63	63	63	65	64	61
# Fistula > 3 yrs	27	27	26	27	26	27	29	29	31	30	28	27
% Fistula > 3 yrs	42%	41%	38%	39%	41%	44%	46%	46%	49%	46%	44%	44%



	Jan	Feb	Mar	Apr	May	Jun	Jul	Aug	Sep	Oct	Nov	Dec
# Graft	12	12	15	15	15	11	14	14	16	16	16	17
# Graft > 2 yrs	6	6	6	6	6	5	5	5	5	7	7	7
% Graft > 2 yrs	50%	50%	40%	40%	40%	45%	36%	36%	31%	44%	44%	41%

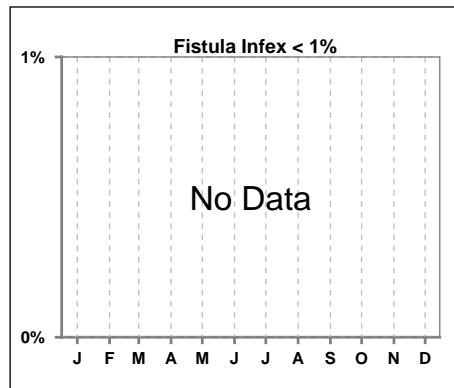


Methodology: a) All labs for 'Adequacy of Dialysis', 'Nutrition', 'Osteodystrophy', 'Anemia' and 'Diabetes' based on last value of month; b) BP's and #L processed are average of all values for month; c) Access data takes last access of month; d) Values for SGA and 'Infection Control' use most recent result.

IV. ACCESS - CONT.

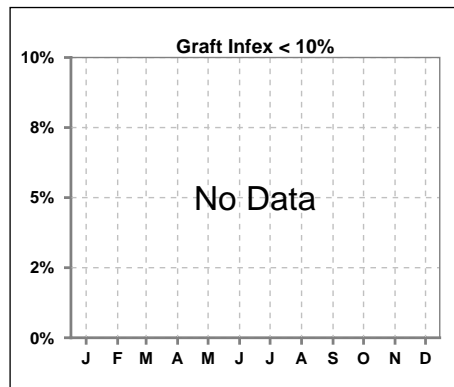
Infection per use-life of access fistula

	Jan	Feb	Mar	Apr	May	Jun	Jul	Aug	Sep	Oct	Nov	Dec
Infex per use-life												



Infection per use-life of access graft

	Jan	Feb	Mar	Apr	May	Jun	Jul	Aug	Sep	Oct	Nov	Dec
Infex per use-life												



Thrombosis Episode - access fistula

	Jan	Feb	Mar	Apr	May	Jun	Jul	Aug	Sep	Oct	Nov	Dec
Current Month												
Rolling Year-to-date						0.03	0.06	0.02	0.01	0.01	0.01	

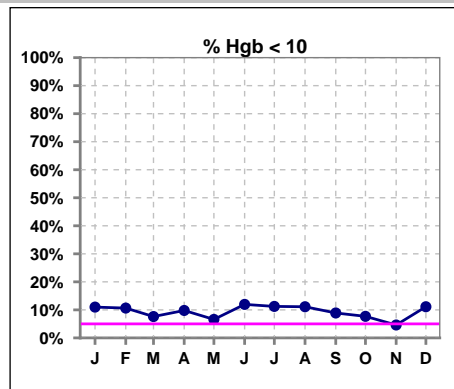
Thrombosis Episode - access graft

	Jan	Feb	Mar	Apr	May	Jun	Jul	Aug	Sep	Oct	Nov	Dec
Current Month												
Rolling Year-to-date							0.18					

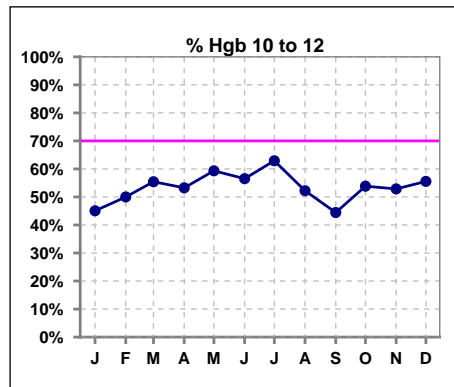
Methodology: a) All labs for 'Adequacy of Dialysis', 'Nutrition', 'Osteodystrophy', 'Anemia' and 'Diabetes' based on last value of month; b) BP's and #L processed are average of all values for month; c) Access data takes last access of month; d) Values for SGA and 'Infection Control' use most recent result.

V. ANEMIA

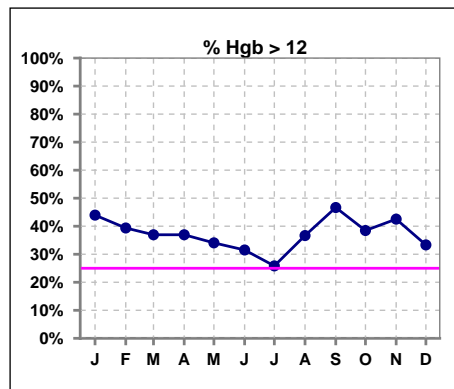
	Jan	Feb	Mar	Apr	May	Jun	Jul	Aug	Sep	Oct	Nov	Dec
# Hgb	91	94	92	92	91	92	89	90	90	91	87	81
# Hgb < 10	10	10	7	9	6	11	10	10	8	7	4	9
Pop. Mean	11.8	11.7	11.6	11.6	11.8	11.5	11.3	11.5	11.7	11.7	11.9	11.5
Std. Deviation	1.4	1.4	1.3	1.4	1.1	1.1	1.2	1.4	1.5	1.3	1.2	1.4
% Hgb < 10	11%	11%	8%	10%	7%	12%	11%	11%	9%	8%	5%	11%



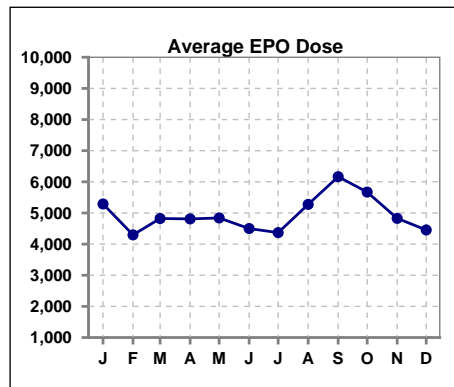
	Jan	Feb	Mar	Apr	May	Jun	Jul	Aug	Sep	Oct	Nov	Dec
# Hgb	91	94	92	92	91	92	89	90	90	91	87	81
# Hgb 10 to 12	41	47	51	49	54	52	56	47	40	49	46	45
Pop. Mean	11.8	11.7	11.6	11.6	11.8	11.5	11.3	11.5	11.7	11.7	11.9	11.5
Std. Deviation	1.4	1.4	1.3	1.4	1.1	1.1	1.2	1.4	1.5	1.3	1.2	1.4
% Hgb 10 to 12	45%	50%	55%	53%	59%	57%	63%	52%	44%	54%	53%	56%



	Jan	Feb	Mar	Apr	May	Jun	Jul	Aug	Sep	Oct	Nov	Dec
# Hgb	91	94	92	92	91	92	89	90	90	91	87	81
# Hgb > 12	40	37	34	34	31	29	23	33	42	35	37	27
Pop. Mean	11.8	11.7	11.6	11.6	11.8	11.5	11.3	11.5	11.7	11.7	11.9	11.5
Std. Deviation	1.4	1.4	1.3	1.4	1.1	1.1	1.2	1.4	1.5	1.3	1.2	1.4
% Hgb > 12	44%	39%	37%	37%	34%	32%	26%	37%	47%	38%	43%	33%



	Jan	Feb	Mar	Apr	May	Jun	Jul	Aug	Sep	Oct	Nov	Dec
# Average EPO Dose	5288	4296	4822	4809	4840	4500	4369	5275	6165	5671	4826	4454

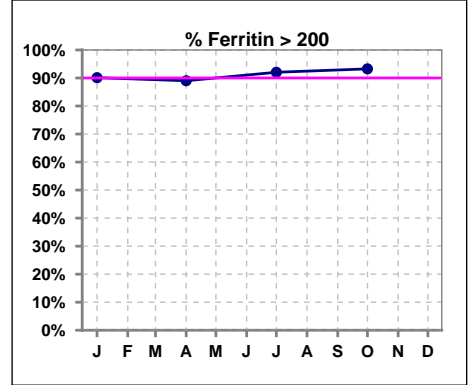


Methodology: a) All labs for 'Adequacy of Dialysis', 'Nutrition', 'Osteodystrophy', 'Anemia' and 'Diabetes' based on last value of month; b) BP's and #L processed are average of all values for month; c) Access data takes last access of month; d) Values for SGA and 'Infection Control' use most recent result.

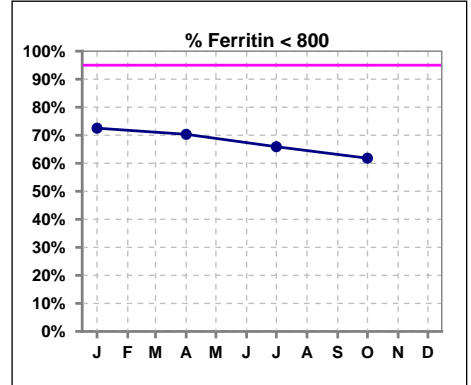
V. ANEMIA - CONT.

Iron Profile

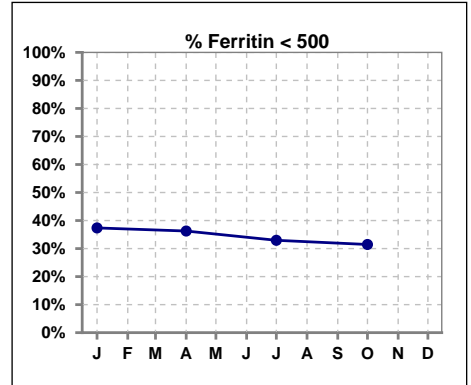
	Jan	Feb	Mar	Apr	May	Jun	Jul	Aug	Sep	Oct	Nov	Dec
# Ferritin	91			91			88			89		
# Ferritin > 200	82			81			81			83		
Pop. Mean	638			615			666			659		
Std. Deviation	386			317			345			297		
% Ferritin > 200	90%			89%			92%			93%		



	Jan	Feb	Mar	Apr	May	Jun	Jul	Aug	Sep	Oct	Nov	Dec
# Ferritin	91			91			88			89		
# Ferritin < 800	66			64			58			55		
Pop. Mean	638			615			666			659		
Std. Deviation	386			317			345			297		
% Ferritin < 800	73%			70%			66%			62%		

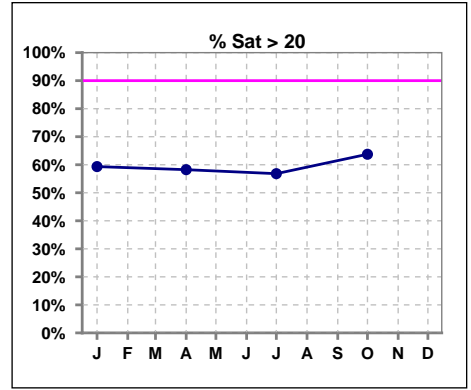


	Jan	Feb	Mar	Apr	May	Jun	Jul	Aug	Sep	Oct	Nov	Dec
# Ferritin	91			91			88			89		
# Ferritin < 500	34			33			29			28		
Pop. Mean	638			615			666			659		
Std. Deviation	386			317			345			297		
% Ferritin < 500	37%			36%			33%			31%		

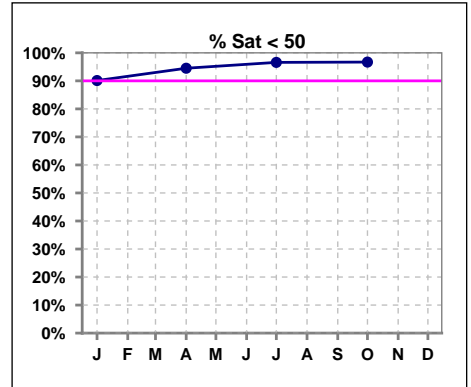


V. ANEMIA - CONT.

	Jan	Feb	Mar	Apr	May	Jun	Jul	Aug	Sep	Oct	Nov	Dec
# % Sat	91			91			88			91		
# % Sat > 20	54			53			50			58		
Pop. Mean	26			25			25			25		
Std. Deviation	15			14			13			10		
% Sat% > 20	59%			58%			57%			64%		

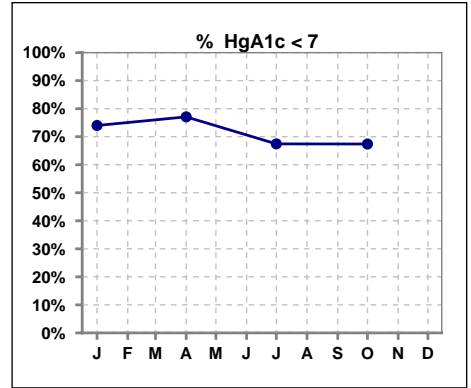


	Jan	Feb	Mar	Apr	May	Jun	Jul	Aug	Sep	Oct	Nov	Dec
# % Sat	91			91			88			91		
# % Sat < 50	82			86			85			88		
Pop. Mean	26			25			25			25		
Std. Deviation	15			14			13			10		
% Sat% < 50	90%			95%			97%			97%		



VI. Diabetes

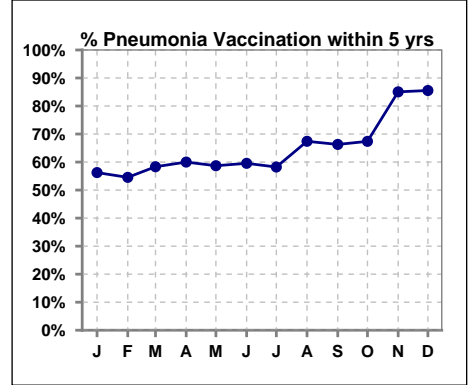
	Jan	Feb	Mar	Apr	May	Jun	Jul	Aug	Sep	Oct	Nov	Dec
# HgA1c	50			48			43			46		
# HgA1c < 7	37			37			29			31		
Pop. Mean	6.4			6.4			6.4			6.7		
Std. Deviation	1.18			1.29			1.36			1.53		
% HgA1c < 7	74%			77%			67%			67%		



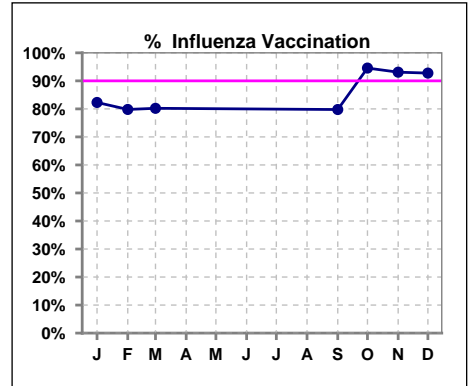
VII. Infection Control

Pneumonia vaccination within the past five years

	Jan	Feb	Mar	Apr	May	Jun	Jul	Aug	Sep	Oct	Nov	Dec
# Patient	96	99	96	95	92	89	91	89	89	92	87	83
# Pneumonia	54	54	56	57	54	53	53	60	59	62	74	71
% Pneumonia	56%	55%	58%	60%	59%	60%	58%	67%	66%	67%	85%	86%



	Jan	Feb	Mar	Apr	May	Jun	Jul	Aug	Sep	Oct	Nov	Dec
# Patient	96	99	96						89	92	87	83
# Influenza	79	79	77						71	87	81	77
% Influenza	82%	80%	80%						80%	95%	93%	93%



Methodology: a) All labs for 'Adequacy of Dialysis', 'Nutrition', 'Osteodystrophy', 'Anemia' and 'Diabetes' based on last value of month; b) BP's and #L processed are average of all values for month; c) Access data takes last access of month; d) Values for SGA and 'Infection Control' use most recent result.