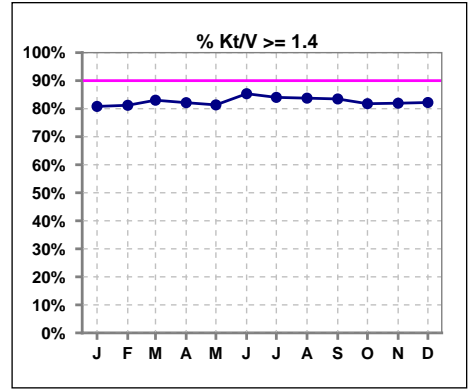
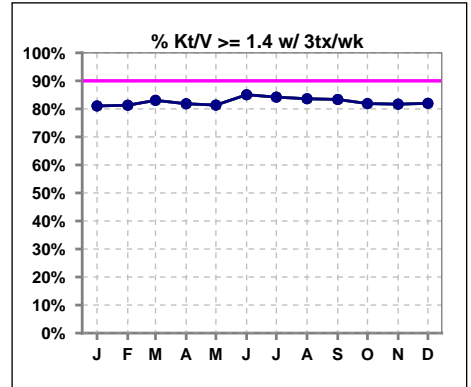


**I. ADEQUACY OF DIALYSIS**

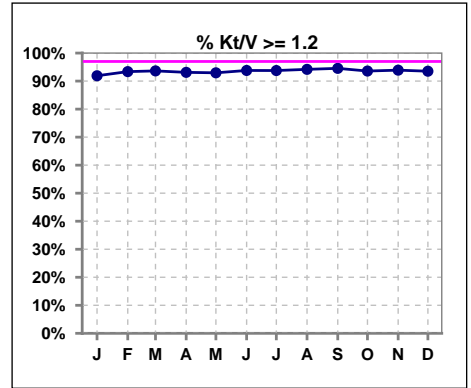
	Jan	Feb	Mar	Apr	May	Jun	Jul	Aug	Sep	Oct	Nov	Dec
# Kt/V	1136	1118	1131	1148	1164	1160	1153	1170	1156	1169	1164	1158
# Kt/V >= 1.4	918	908	939	943	947	990	969	980	965	956	954	952
Pop. Mean	1.62	1.63	1.63	1.65	1.66	1.66	1.67	1.66	1.68	1.65	1.65	1.65
Std. Deviation	0.31	0.32	0.32	0.34	0.86	0.33	0.36	0.35	0.36	0.37	0.31	0.33
% Kt/V >= 1.4	81%	81%	83%	82%	81%	85%	84%	84%	83%	82%	82%	82%



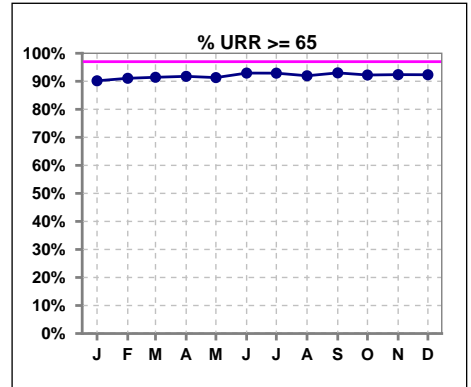
	Jan	Feb	Mar	Apr	May	Jun	Jul	Aug	Sep	Oct	Nov	Dec
# Kt/V w/ 3tx/wk	1071	1054	1068	1090	1105	1104	1101	1117	1106	1121	1108	1104
# Kt/V >= 1.4 w/ 3tx/wk	868	857	887	892	899	939	927	934	922	918	905	905
Pop. Mean	1.61	1.62	1.62	1.64	1.65	1.65	1.66	1.64	1.67	1.64	1.64	1.64
Std. Deviation	0.31	0.30	0.31	0.33	0.87	0.31	0.33	0.33	0.34	0.35	0.31	0.33
% Kt/V >= 1.4 w/ 3tx/wk	81%	81%	83%	82%	81%	85%	84%	84%	83%	82%	82%	82%



	Jan	Feb	Mar	Apr	May	Jun	Jul	Aug	Sep	Oct	Nov	Dec
# Kt/V	1136	1118	1131	1148	1164	1160	1154	1170	1156	1170	1164	1158
# Kt/V >= 1.2	1044	1044	1059	1069	1082	1088	1082	1102	1093	1095	1093	1083
Pop. Mean	1.62	1.63	1.63	1.65	1.66	1.66	1.67	1.66	1.68	1.65	1.65	1.65
Std. Deviation	0.31	0.32	0.32	0.34	0.86	0.33	0.36	0.35	0.36	0.37	0.31	0.33
% Kt/V >= 1.2	92%	93%	94%	93%	93%	94%	94%	94%	95%	94%	94%	94%



	Jan	Feb	Mar	Apr	May	Jun	Jul	Aug	Sep	Oct	Nov	Dec
# URR	1140	1131	1143	1153	1164	1161	1155	1171	1158	1173	1168	1162
# URR >= 65	1028	1030	1045	1058	1063	1079	1073	1077	1077	1082	1079	1073
Pop. Mean	74	74	74	74	74	75	75	75	75	75	75	75
Std. Deviation	7.04	6.87	6.57	6.86	6.81	6.56	6.80	6.47	6.63	6.92	6.80	7.05
% URR >= 65	90%	91%	91%	92%	91%	93%	93%	92%	93%	92%	92%	92%

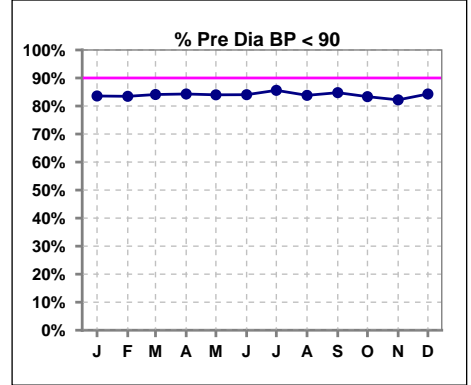


Methodology: a) All labs for 'Adequacy of Dialysis', 'Nutrition', 'Osteodystrophy', 'Anemia' and 'Diabetes' based on last value of month; b) BP's and #L processed are average of all values for month; c) Access data takes last access of month; d) Values for SGA and 'Infection Control' use most recent result.

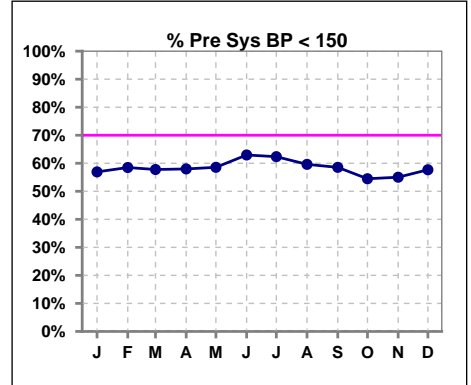
**I. ADEQUACY OF DIALYSIS - CONT.**

**Blood Pressure Control (Pre)**

	Jan	Feb	Mar	Apr	May	Jun	Jul	Aug	Sep	Oct	Nov	Dec
# Pre Dia BP	1163	1161	1170	1178	1175	1185	1174	1186	1182	1195	1185	1191
# Pre Dia BP < 90	972	969	984	993	987	996	1005	994	1002	996	974	1004
Pop. Mean	76	77	76	76	76	76	75	75	76	76	77	76
Std. Deviation	14.0	14.1	14.0	14.5	13.8	13.8	17.7	13.9	13.9	14.1	14.2	14.2
<b>% Pre Dia BP &lt; 90</b>	<b>84%</b>	<b>83%</b>	<b>84%</b>	<b>84%</b>	<b>84%</b>	<b>84%</b>	<b>86%</b>	<b>84%</b>	<b>85%</b>	<b>83%</b>	<b>82%</b>	<b>84%</b>



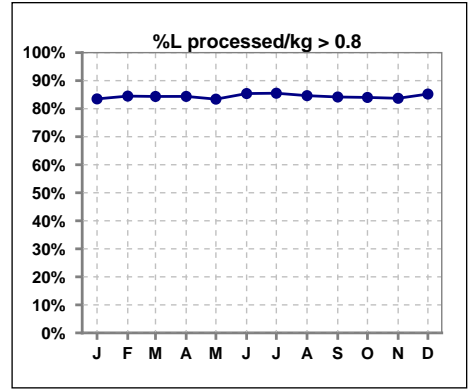
	Jan	Feb	Mar	Apr	May	Jun	Jul	Aug	Sep	Oct	Nov	Dec
# Pre Sys BP	1163	1161	1170	1178	1175	1185	1174	1186	1182	1195	1185	1191
# Pre Sys BP < 150	662	679	676	683	688	746	732	707	692	651	652	687
Pop. Mean	146	146	145	145	145	144	143	144	145	146	147	146
Std. Deviation	21.5	22.0	21.8	21.7	21.3	21.1	21.3	21.5	21.9	22.2	22.0	21.9
<b>%Pre Sys BP &lt;150</b>	<b>57%</b>	<b>58%</b>	<b>58%</b>	<b>58%</b>	<b>59%</b>	<b>63%</b>	<b>62%</b>	<b>60%</b>	<b>59%</b>	<b>54%</b>	<b>55%</b>	<b>58%</b>



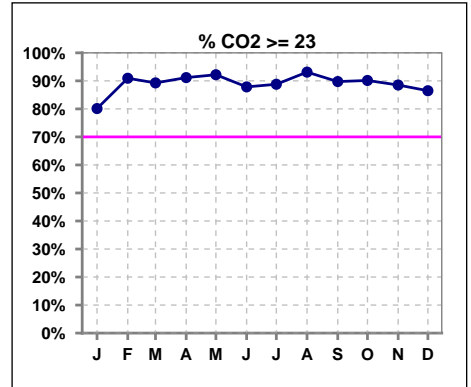
Methodology: a) All labs for 'Adequacy of Dialysis', 'Nutrition', 'Osteodystrophy', 'Anemia' and 'Diabetes' based on last value of month; b) BP's and #L processed are average of all values for month; c) Access data takes last access of month; d) Values for SGA and 'Infection Control' use most recent result.

**I. ADEQUACY OF DIALYSIS - CONT.**

	Jan	Feb	Mar	Apr	May	Jun	Jul	Aug	Sep	Oct	Nov	Dec
# L processed/kg	1163	1161	1170	1178	1175	1185	1174	1186	1182	1195	1185	1191
# L processed/kg>0.8	971	981	987	994	980	1012	1004	1004	995	1004	992	1015
Pop. Mean	1	1	1	1	1	1	1	1	1	1	1	1
Std. Deviation	0.3	0.3	0.3	0.3	0.3	0.3	0.3	0.3	0.3	0.3	0.3	0.3
<b>% L processed/kg&gt;0.8</b>	<b>83%</b>	<b>84%</b>	<b>84%</b>	<b>84%</b>	<b>83%</b>	<b>85%</b>	<b>86%</b>	<b>85%</b>	<b>84%</b>	<b>84%</b>	<b>84%</b>	<b>85%</b>



	Jan	Feb	Mar	Apr	May	Jun	Jul	Aug	Sep	Oct	Nov	Dec
# CO2	1152	1147	1156	1166	1165	1177	1159	1178	1170	1177	1176	1169
# CO2 >= 23	923	1043	1032	1063	1074	1034	1029	1097	1050	1061	1041	1011
Pop. Mean	25	26	26	27	27	26	26	27	26	27	26	26
Std. Deviation	3.26	3.02	3.01	2.97	3.03	3.03	3.00	2.92	3.06	3.15	3.12	3.15
<b>% CO2 &gt;= 23</b>	<b>80%</b>	<b>91%</b>	<b>89%</b>	<b>91%</b>	<b>92%</b>	<b>88%</b>	<b>89%</b>	<b>93%</b>	<b>90%</b>	<b>90%</b>	<b>89%</b>	<b>86%</b>



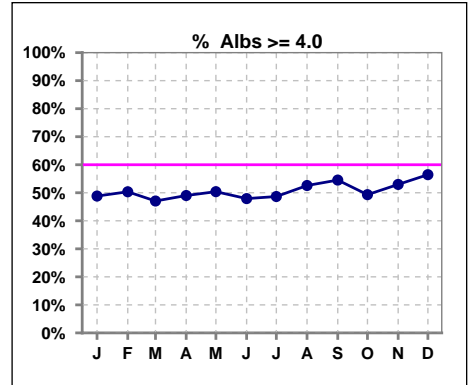
Methodology: a) All labs for 'Adequacy of Dialysis', 'Nutrition', 'Osteodystrophy', 'Anemia' and 'Diabetes' based on last value of month; b) BP's and #L processed are average of all values for month; c) Access data takes last access of month; d) Values for SGA and 'Infection Control' use most recent result.

**Northwest Kidney Centers - Consolidated Center**  
**Quality Assurance Reports**  
 Through period ending Dec. 31, 2010

\*Albumin values use BCG method - as of July 2001

**II. NUTRITION**

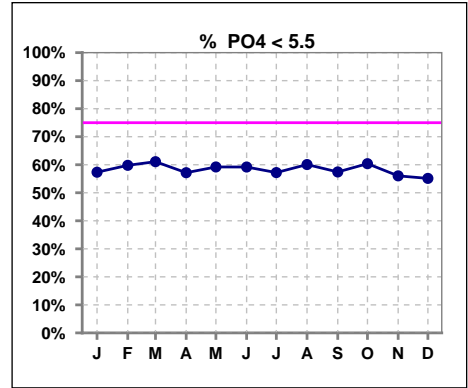
	Jan	Feb	Mar	Apr	May	Jun	Jul	Aug	Sep	Oct	Nov	Dec
# Albumin	1151	1148	1156	1167	1165	1175	1159	1177	1170	1178	1176	1169
# Albumin >= 4.0	562	578	544	572	587	563	564	619	638	581	623	660
Pop. Mean	3.9	3.9	3.9	3.9	3.9	3.9	3.9	3.9	3.9	3.9	3.9	4.0
Std. Deviation	0.38	0.38	0.40	0.41	0.38	0.38	0.39	0.40	0.39	0.38	0.38	0.41
% Alb >= 3.5	88%	89%	87%	88%	89%	89%	89%	90%	91%	90%	91%	91%
% Alb >= 3.0	98%	98%	97%	97%	98%	97%	97%	98%	98%	98%	98%	98%
<b>% Alb &gt;= 4.0</b>	<b>49%</b>	<b>50%</b>	<b>47%</b>	<b>49%</b>	<b>50%</b>	<b>48%</b>	<b>49%</b>	<b>53%</b>	<b>55%</b>	<b>49%</b>	<b>53%</b>	<b>56%</b>



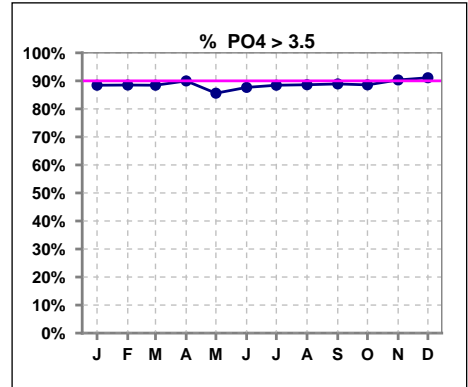
Methodology: a) All labs for 'Adequacy of Dialysis', 'Nutrition', 'Osteodystrophy', 'Anemia' and 'Diabetes' based on last value of month; b) BP's and #L processed are average of all values for month; c) Access data takes last access of month; d) Values for SGA and 'Infection Control' use most recent result.

**III. OSTEODYSTROPHY**

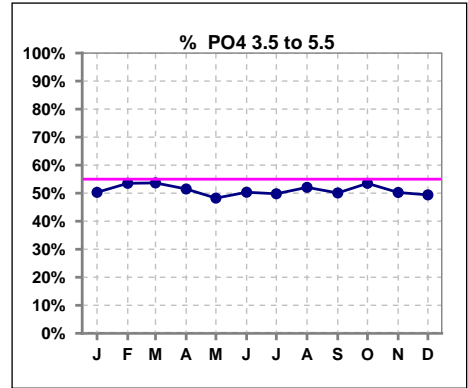
	Jan	Feb	Mar	Apr	May	Jun	Jul	Aug	Sep	Oct	Nov	Dec
# PO4	1151	1149	1159	1167	1167	1176	1159	1177	1172	1181	1178	1170
# PO4 < 5.5	660	687	708	667	691	696	663	707	673	713	660	645
Pop. Mean	5.3	5.2	5.2	5.3	5.1	5.2	5.3	5.3	5.3	5.2	5.4	5.5
Std. Deviation	1.56	1.50	1.54	1.53	1.69	1.68	1.61	1.62	1.59	1.52	1.59	1.65
% PO4 < 5.5	57%	60%	61%	57%	59%	59%	57%	60%	57%	60%	56%	55%



	Jan	Feb	Mar	Apr	May	Jun	Jul	Aug	Sep	Oct	Nov	Dec
# PO4	1151	1149	1159	1167	1167	1176	1159	1177	1172	1181	1178	1170
# PO4 > 3.5	1018	1017	1025	1050	999	1031	1025	1043	1042	1046	1064	1066
Pop. Mean	5.3	5.2	5.2	5.3	5.1	5.2	5.3	5.3	5.3	5.2	5.4	5.5
Std. Deviation	1.56	1.50	1.54	1.53	1.69	1.68	1.61	1.62	1.59	1.52	1.59	1.65
% PO4 > 3.5	88%	89%	88%	90%	86%	88%	88%	89%	89%	89%	90%	91%



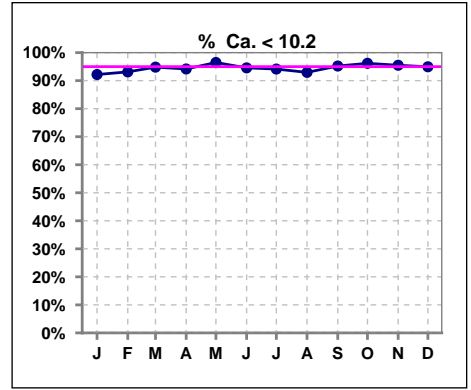
	Jan	Feb	Mar	Apr	May	Jun	Jul	Aug	Sep	Oct	Nov	Dec
# PO4	1151	1149	1159	1167	1167	1176	1159	1177	1172	1181	1178	1170
# PO4 3.5 to 5.5	579	615	622	601	563	592	577	613	587	632	592	578
Pop. Mean	5.3	5.2	5.2	5.3	5.1	5.2	5.3	5.3	5.3	5.2	5.4	5.5
Std. Deviation	1.56	1.50	1.54	1.53	1.69	1.68	1.61	1.62	1.59	1.52	1.59	1.65
% PO4 3.5 to 5.5	50%	54%	54%	52%	48%	50%	50%	52%	50%	54%	50%	49%



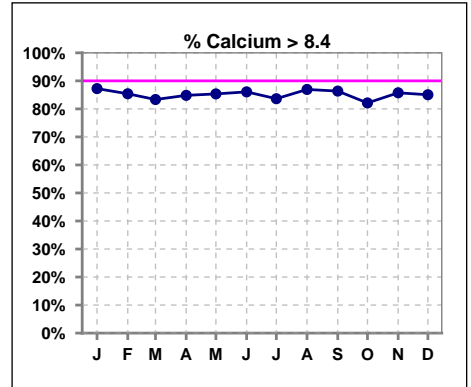
Methodology: a) All labs for 'Adequacy of Dialysis', 'Nutrition', 'Osteodystrophy', 'Anemia' and 'Diabetes' based on last value of month; b) BP's and #L processed are average of all values for month; c) Access data takes last access of month; d) Values for SGA and 'Infection Control' use most recent result.

**III. OSTEODYSTROPHY - CONT.**

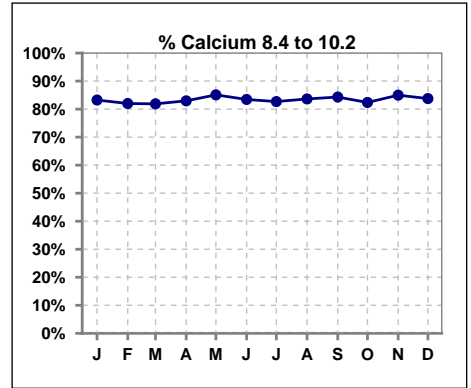
	Jan	Feb	Mar	Apr	May	Jun	Jul	Aug	Sep	Oct	Nov	Dec
# Calcium	1152	1150	1159	1167	1167	1178	1161	1179	1172	1180	1178	1170
# Calcium < 10.2	1062	1071	1099	1099	1126	1114	1093	1096	1116	1135	1125	1111
Pop. Mean	9.2	9.2	9.1	9.1	9.1	9.2	9.2	9.2	9.2	9.1	9.2	9.2
Std. Deviation	0.74	0.75	0.73	0.72	0.69	0.74	0.74	0.75	0.71	0.73	0.69	0.74
<b>% Ca &lt; 10.2</b>	<b>92%</b>	<b>93%</b>	<b>95%</b>	<b>94%</b>	<b>96%</b>	<b>95%</b>	<b>94%</b>	<b>93%</b>	<b>95%</b>	<b>96%</b>	<b>96%</b>	<b>95%</b>



	Jan	Feb	Mar	Apr	May	Jun	Jul	Aug	Sep	Oct	Nov	Dec
# Calcium	1152	1150	1159	1167	1167	1178	1161	1179	1172	1180	1178	1170
# Calcium > 8.4	1005	982	966	990	996	1014	971	1025	1012	969	1010	995
Pop. Mean	9.2	9.2	9.1	9.1	9.1	9.2	9.2	9.2	9.2	9.1	9.2	9.2
Std. Deviation	0.74	0.75	0.73	0.72	0.69	0.74	0.74	0.75	0.71	0.73	0.69	0.74
<b>% Calcium &gt; 8.4</b>	<b>87%</b>	<b>85%</b>	<b>83%</b>	<b>85%</b>	<b>85%</b>	<b>86%</b>	<b>84%</b>	<b>87%</b>	<b>86%</b>	<b>82%</b>	<b>86%</b>	<b>85%</b>



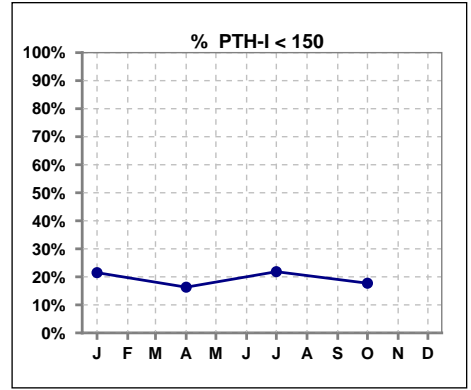
	Jan	Feb	Mar	Apr	May	Jun	Jul	Aug	Sep	Oct	Nov	Dec
# Calcium	1152	1150	1159	1167	1167	1178	1161	1179	1172	1180	1178	1170
# Calcium 8.4 to 10.2	959	943	949	968	993	983	960	986	988	972	1001	980
Pop. Mean	9.2	9.2	9.1	9.1	9.1	9.2	9.2	9.2	9.2	9.1	9.2	9.2
Std. Deviation	0.74	0.75	0.73	0.72	0.69	0.74	0.74	0.75	0.71	0.73	0.69	0.74
<b>% Calcium 8.4 to 10.2</b>	<b>83%</b>	<b>82%</b>	<b>82%</b>	<b>83%</b>	<b>85%</b>	<b>83%</b>	<b>83%</b>	<b>84%</b>	<b>84%</b>	<b>82%</b>	<b>85%</b>	<b>84%</b>



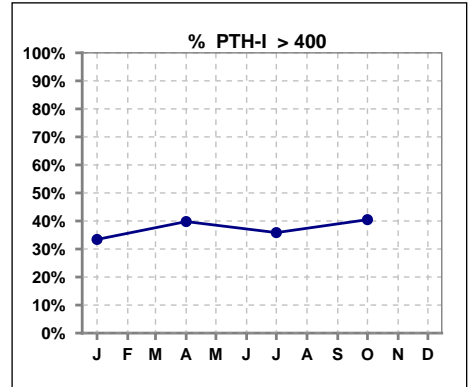
Methodology: a) All labs for 'Adequacy of Dialysis', 'Nutrition', 'Osteodystrophy', 'Anemia' and 'Diabetes' based on last value of month; b) BP's and #L processed are average of all values for month; c) Access data takes last access of month; d) Values for SGA and 'Infection Control' use most recent result.

**III. OSTEODYSTROPHY - CONT.**

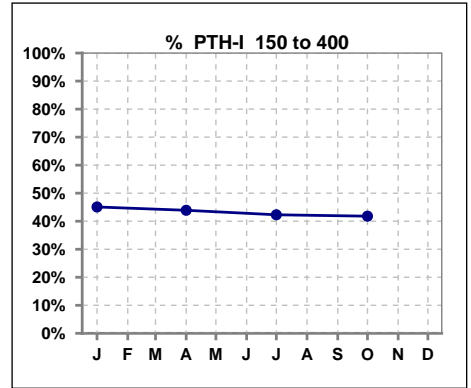
	Jan	Feb	Mar	Apr	May	Jun	Jul	Aug	Sep	Oct	Nov	Dec
# PTH-I	1149			1073			1149			1055		
# PTH-I < 150	247			175			251			187		
Pop. Mean	413			477			430			462		
Std. Deviation	423			493			464			416		
<b>% PTH-I &lt; 150</b>	<b>21%</b>			<b>16%</b>			<b>22%</b>			<b>18%</b>		



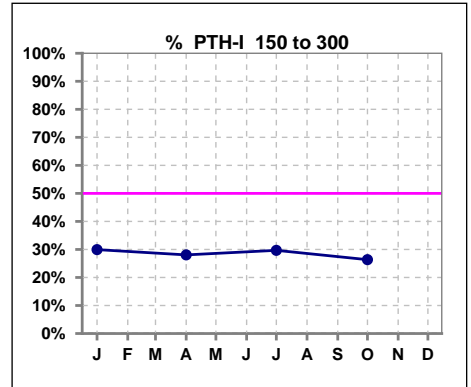
	Jan	Feb	Mar	Apr	May	Jun	Jul	Aug	Sep	Oct	Nov	Dec
# PTH-I	1149			1073			1149			1055		
# PTH-I > 400	384			427			412			427		
Pop. Mean	413			477			430			462		
Std. Deviation	423			493			464			416		
<b>% PTH-I &gt; 400</b>	<b>33%</b>			<b>40%</b>			<b>36%</b>			<b>40%</b>		



	Jan	Feb	Mar	Apr	May	Jun	Jul	Aug	Sep	Oct	Nov	Dec
# PTH-I	1149			1073			1149			1055		
# PTH-I 150 to 400	518			471			486			441		
Pop. Mean	413			477			430			462		
Std. Deviation	423			493			464			416		
<b>% PTH-I 150 to 400</b>	<b>45%</b>			<b>44%</b>			<b>42%</b>			<b>42%</b>		



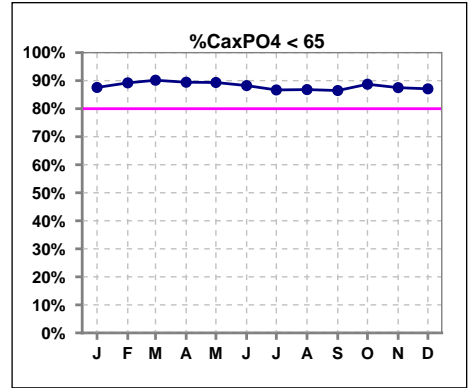
	Jan	Feb	Mar	Apr	May	Jun	Jul	Aug	Sep	Oct	Nov	Dec
# PTH-I	1149			1073			1149			1055		
# PTH-I 150 to 300	344			301			341			278		
Pop. Mean	413			477			430			462		
Std. Deviation	423			493			464			416		
<b>% PTH-I 150 to 300</b>	<b>30%</b>			<b>28%</b>			<b>30%</b>			<b>26%</b>		



Methodology: a) All labs for 'Adequacy of Dialysis', 'Nutrition', 'Osteodystrophy', 'Anemia' and 'Diabetes' based on last value of month; b) BP's and #L processed are average of all values for month; c) Access data takes last access of month; d) Values for SGA and 'Infection Control' use most recent result.

**III. OSTEODYSTROPHY - CONT.**

	Jan	Feb	Mar	Apr	May	Jun	Jul	Aug	Sep	Oct	Nov	Dec
# Ca x PO4	1151	1149	1158	1165	1164	1174	1157	1176	1169	1180	1177	1169
# Ca x PO4 < 65	1008	1025	1044	1042	1040	1036	1003	1021	1011	1047	1030	1018
Pop. Mean	49.0	47.9	48.0	48.3	48.7	49.2	49.4	48.9	49.2	47.8	49.4	50.2
Std. Deviation	14.9	14.5	14.2	14.9	14.1	14.8	15.2	15.5	15.2	14.3	14.7	15.2
<b>% Ca x PO4 &lt; 65</b>	<b>88%</b>	<b>89%</b>	<b>90%</b>	<b>89%</b>	<b>89%</b>	<b>88%</b>	<b>87%</b>	<b>87%</b>	<b>86%</b>	<b>89%</b>	<b>88%</b>	<b>87%</b>

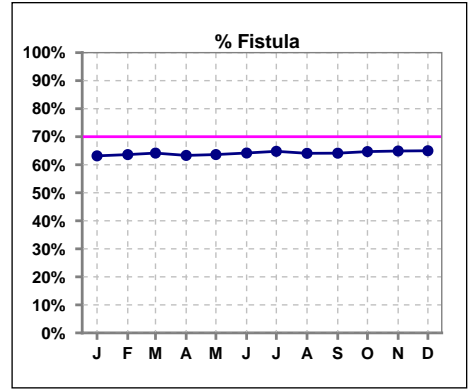


Methodology: a) All labs for 'Adequacy of Dialysis', 'Nutrition', 'Osteodystrophy', 'Anemia' and 'Diabetes' based on last value of month; b) BP's and #L processed are average of all values for month; c) Access data takes last access of month; d) Values for SGA and 'Infection Control' use most recent result.

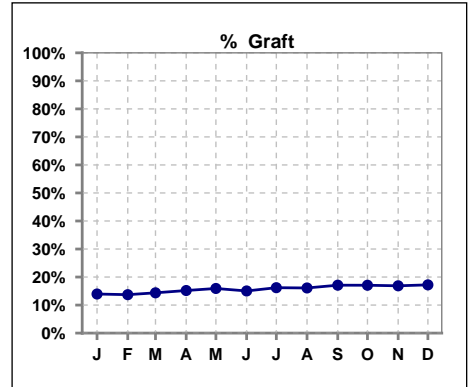


**IV. ACCESS**

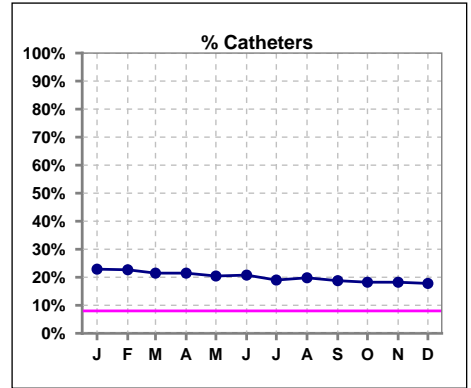
	Jan	Feb	Mar	Apr	May	Jun	Jul	Aug	Sep	Oct	Nov	Dec
<b># Access</b>	1162	1160	1169	1178	1174	1184	1173	1186	1182	1195	1185	1191
<b># Fistula</b>	734	738	750	746	747	760	760	760	758	773	769	774
<b>% Fistula</b>	63%	64%	64%	63%	64%	64%	65%	64%	64%	65%	65%	65%



	Jan	Feb	Mar	Apr	May	Jun	Jul	Aug	Sep	Oct	Nov	Dec
<b># Access</b>	1162	1160	1169	1178	1174	1184	1173	1186	1182	1195	1185	1191
<b># Graft</b>	162	159	168	179	187	178	190	191	202	204	200	205
<b>% Graft</b>	14%	14%	14%	15%	16%	15%	16%	16%	17%	17%	17%	17%



	Jan	Feb	Mar	Apr	May	Jun	Jul	Aug	Sep	Oct	Nov	Dec
<b># Access</b>	1162	1160	1169	1178	1174	1184	1173	1186	1182	1195	1185	1191
<b># Catheters</b>	266	263	251	253	240	246	223	235	222	218	216	212
<b>% Catheters</b>	23%	23%	21%	21%	20%	21%	19%	20%	19%	18%	18%	18%

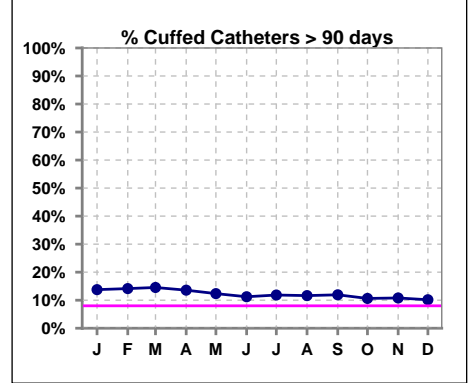


Methodology: a) All labs for 'Adequacy of Dialysis', 'Nutrition', 'Osteodystrophy', 'Anemia' and 'Diabetes' based on last value of month; b) BP's and #L processed are average of all values for month; c) Access data takes last access of month; d) Values for SGA and 'Infection Control' use most recent result.

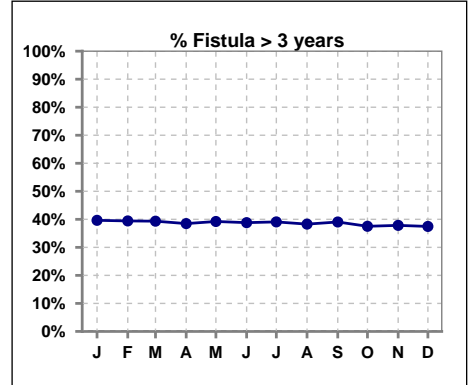
**IV. ACCESS - CONT.**

**Cuffed Catheters > 90 days**

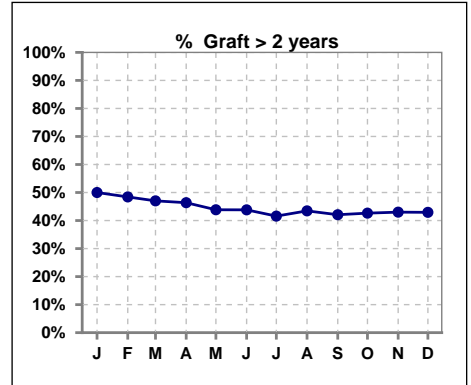
	Jan	Feb	Mar	Apr	May	Jun	Jul	Aug	Sep	Oct	Nov	Dec
<b># Access</b>	1162	1160	1169	1178	1174	1184	1173	1186	1182	1195	1185	1191
<b># Cuffed Catheters</b>	160	164	170	160	145	133	139	138	141	127	128	121
<b>% Cuffed Catheters</b>	14%	14%	15%	14%	12%	11%	12%	12%	12%	11%	11%	10%



	Jan	Feb	Mar	Apr	May	Jun	Jul	Aug	Sep	Oct	Nov	Dec
<b># Fistula</b>	734	738	750	746	747	760	760	760	758	773	769	774
<b># Fistula &gt; 3 yrs</b>	291	291	295	287	293	295	297	291	296	290	291	290
<b>% Fistula &gt; 3 yrs</b>	40%	39%	39%	38%	39%	39%	39%	38%	39%	38%	38%	37%



	Jan	Feb	Mar	Apr	May	Jun	Jul	Aug	Sep	Oct	Nov	Dec
<b># Graft</b>	162	159	168	179	187	178	190	191	202	204	200	205
<b># Graft &gt; 2 yrs</b>	81	77	79	83	82	78	79	83	85	87	86	88
<b>% Graft &gt; 2 yrs</b>	50%	48%	47%	46%	44%	44%	42%	43%	42%	43%	43%	43%

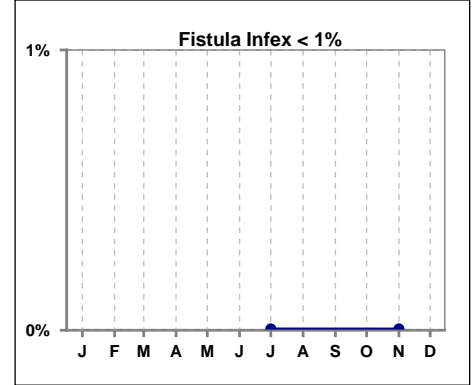


Methodology: a) All labs for 'Adequacy of Dialysis', 'Nutrition', 'Osteodystrophy', 'Anemia' and 'Diabetes' based on last value of month; b) BP's and #L processed are average of all values for month; c) Access data takes last access of month; d) Values for SGA and 'Infection Control' use most recent result.

**IV. ACCESS - CONT.**

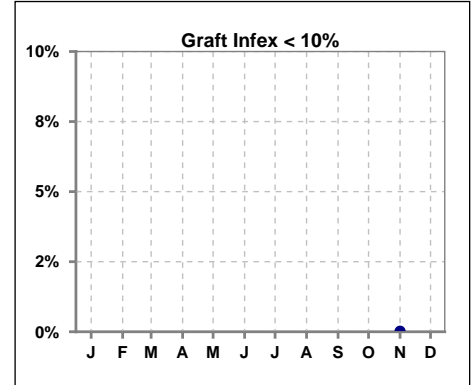
**Infection per use-life of access fistula**

	Jan	Feb	Mar	Apr	May	Jun	Jul	Aug	Sep	Oct	Nov	Dec
<b>Infex per use-life</b>						0.0046				0.0046		



**Infection per use-life of access graft**

	Jan	Feb	Mar	Apr	May	Jun	Jul	Aug	Sep	Oct	Nov	Dec
<b>Infex per use-life</b>										0.0222		



**Thrombosis Episode - access fistula**

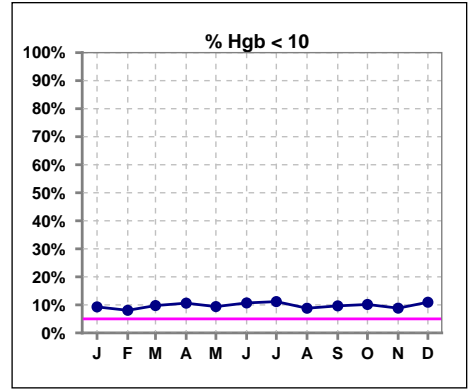
	Jan	Feb	Mar	Apr	May	Jun	Jul	Aug	Sep	Oct	Nov	Dec
<b>Current Month</b>						0.02	0.03	0.02	0.01		0.00	0.00
<b>Rolling Year-to-date</b>						0.02	0.03	0.02	0.01	0.01	0.01	0.01

**Thrombosis Episode - access graft**

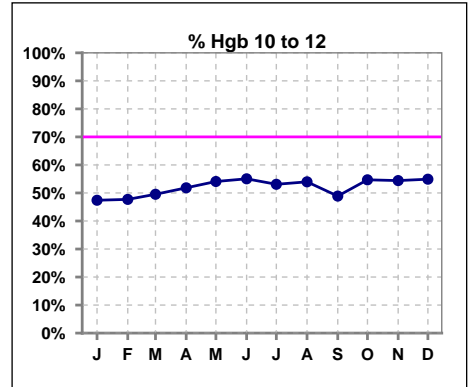
	Jan	Feb	Mar	Apr	May	Jun	Jul	Aug	Sep	Oct	Nov	Dec
<b>Current Month</b>						0.03	0.07		0.05	0.03	0.03	0.02
<b>Rolling Year-to-date</b>						0.12	0.13	0.07	0.07	0.05	0.05	0.04

**V. ANEMIA**

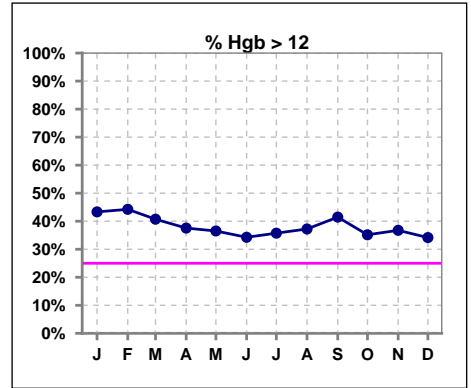
	Jan	Feb	Mar	Apr	May	Jun	Jul	Aug	Sep	Oct	Nov	Dec
# Hgb	1154	1155	1159	1169	1172	1179	1164	1182	1172	1183	1178	1171
# Hgb < 10	107	93	113	124	110	126	130	104	113	120	104	128
Pop. Mean	11.8	11.8	11.7	11.6	11.6	11.5	11.6	11.6	11.7	11.6	11.7	11.5
Std. Deviation	1.4	1.4	1.3	1.4	1.3	1.3	1.3	1.3	1.4	1.3	1.3	1.3
% Hgb < 10	9%	8%	10%	11%	9%	11%	11%	9%	10%	10%	9%	11%



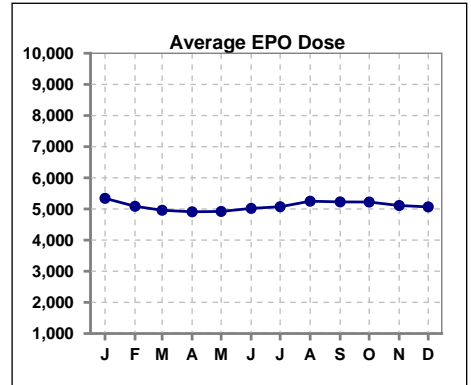
	Jan	Feb	Mar	Apr	May	Jun	Jul	Aug	Sep	Oct	Nov	Dec
# Hgb	1154	1155	1159	1169	1172	1179	1164	1182	1172	1183	1178	1171
# Hgb 10 to 12	547	551	574	606	634	649	618	638	573	647	641	643
Pop. Mean	11.8	11.8	11.7	11.6	11.6	11.5	11.6	11.6	11.7	11.6	11.7	11.5
Std. Deviation	1.4	1.4	1.3	1.4	1.3	1.3	1.3	1.3	1.4	1.3	1.3	1.3
% Hgb 10 to 12	47%	48%	50%	52%	54%	55%	53%	54%	49%	55%	54%	55%



	Jan	Feb	Mar	Apr	May	Jun	Jul	Aug	Sep	Oct	Nov	Dec
# Hgb	1154	1155	1159	1169	1172	1179	1164	1182	1172	1183	1178	1171
# Hgb > 12	500	511	472	439	428	404	416	440	486	416	433	400
Pop. Mean	11.8	11.8	11.7	11.6	11.6	11.5	11.6	11.6	11.7	11.6	11.7	11.5
Std. Deviation	1.4	1.4	1.3	1.4	1.3	1.3	1.3	1.3	1.4	1.3	1.3	1.3
% Hgb > 12	43%	44%	41%	38%	37%	34%	36%	37%	41%	35%	37%	34%



	Jan	Feb	Mar	Apr	May	Jun	Jul	Aug	Sep	Oct	Nov	Dec
# Average EPO Dose	5342	5086	4959	4909	4921	5019	5071	5249	5227	5223	5110	5067

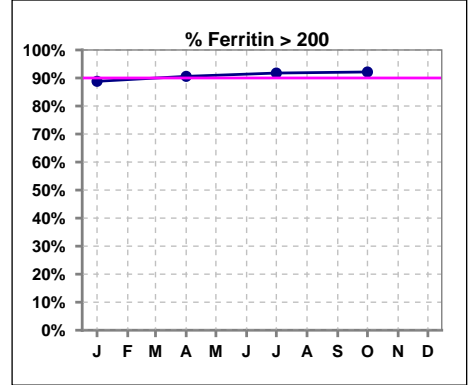


Methodology: a) All labs for 'Adequacy of Dialysis', 'Nutrition', 'Osteodystrophy', 'Anemia' and 'Diabetes' based on last value of month; b) BP's and #L processed are average of all values for month; c) Access data takes last access of month; d) Values for SGA and 'Infection Control' use most recent result.

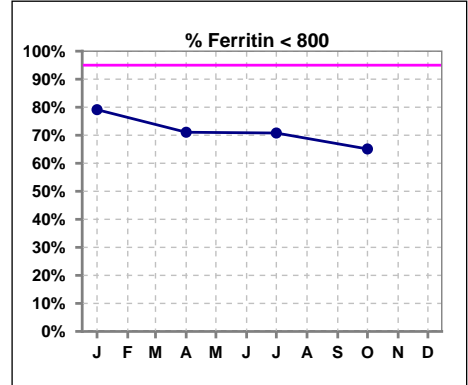
**V. ANEMIA - CONT.**

**Iron Profile**

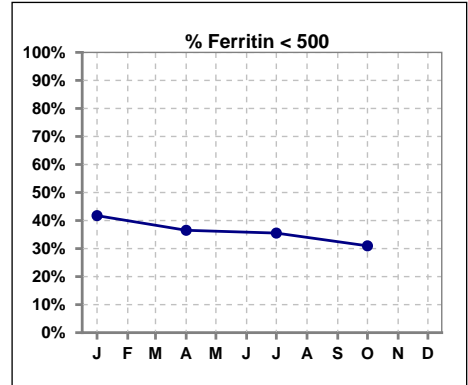
	Jan	Feb	Mar	Apr	May	Jun	Jul	Aug	Sep	Oct	Nov	Dec
# Ferritin	1145			1158			1154			1172		
# Ferritin > 200	1017			1049			1059			1080		
Pop. Mean	584			642			662			699		
Std. Deviation	340			372			433			389		
<b>% Ferritin &gt; 200</b>	<b>89%</b>			<b>91%</b>			<b>92%</b>			<b>92%</b>		



	Jan	Feb	Mar	Apr	May	Jun	Jul	Aug	Sep	Oct	Nov	Dec
# Ferritin	1145			1158			1154			1172		
# Ferritin < 800	906			823			817			763		
Pop. Mean	584			642			662			699		
Std. Deviation	340			372			433			389		
<b>% Ferritin &lt; 800</b>	<b>79%</b>			<b>71%</b>			<b>71%</b>			<b>65%</b>		



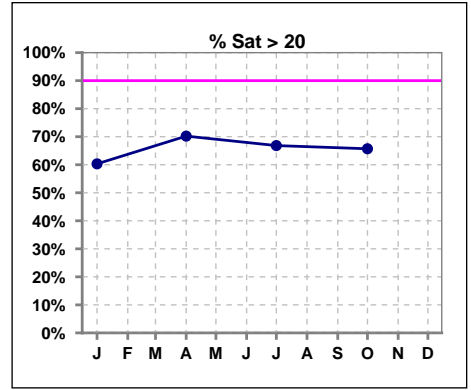
	Jan	Feb	Mar	Apr	May	Jun	Jul	Aug	Sep	Oct	Nov	Dec
# Ferritin	1145			1158			1154			1172		
# Ferritin < 500	478			423			410			363		
Pop. Mean	584			642			662			699		
Std. Deviation	340			372			433			389		
<b>% Ferritin &lt; 500</b>	<b>42%</b>			<b>37%</b>			<b>36%</b>			<b>31%</b>		



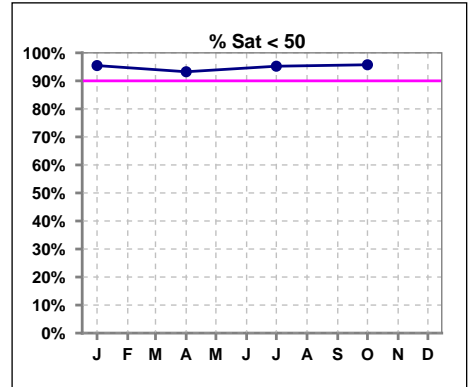
Methodology: a) All labs for 'Adequacy of Dialysis', 'Nutrition', 'Osteodystrophy', 'Anemia' and 'Diabetes' based on last value of month; b) BP's and #L processed are average of all values for month; c) Access data takes last access of month; d) Values for SGA and 'Infection Control' use most recent result.

**V. ANEMIA - CONT.**

	Jan	Feb	Mar	Apr	May	Jun	Jul	Aug	Sep	Oct	Nov	Dec
# % Sat	1144			1155			1152			1175		
# % Sat > 20	690			811			770			772		
Pop. Mean	26			28			27			27		
Std. Deviation	13			14			12			14		
<b>% Sat% &gt; 20</b>	<b>60%</b>			<b>70%</b>			<b>67%</b>			<b>66%</b>		



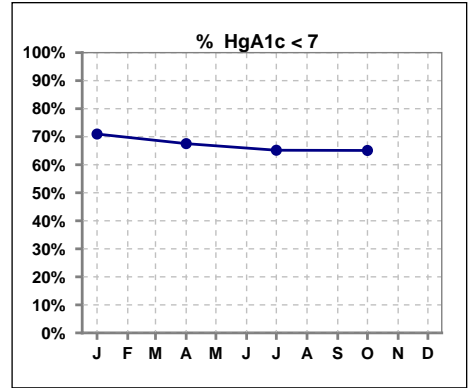
	Jan	Feb	Mar	Apr	May	Jun	Jul	Aug	Sep	Oct	Nov	Dec
# % Sat	1144			1155			1152			1175		
# % Sat < 50	1092			1077			1097			1125		
Pop. Mean	26			28			27			27		
Std. Deviation	13			14			12			14		
<b>% Sat% &lt; 50</b>	<b>95%</b>			<b>93%</b>			<b>95%</b>			<b>96%</b>		



Methodology: a) All labs for 'Adequacy of Dialysis', 'Nutrition', 'Osteodystrophy', 'Anemia' and 'Diabetes' based on last value of month; b) BP's and #L processed are average of all values for month; c) Access data takes last access of month; d) Values for SGA and 'Infection Control' use most recent result.

**VI. Diabetes**

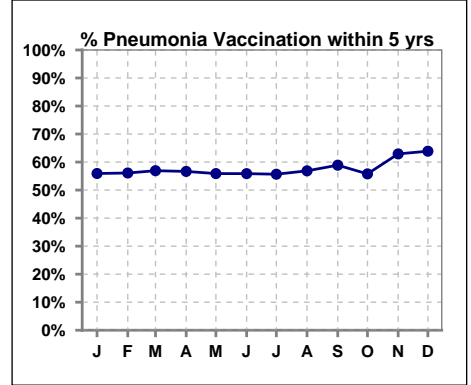
	Jan	Feb	Mar	Apr	May	Jun	Jul	Aug	Sep	Oct	Nov	Dec
# HgA1c	575			582			583			616		
# HgA1c < 7	408			393			380			401		
Pop. Mean	6.5			6.7			6.7			6.7		
Std. Deviation	1.35			1.41			1.43			1.42		
<b>% HgA1c &lt; 7</b>	<b>71%</b>			<b>68%</b>			<b>65%</b>			<b>65%</b>		



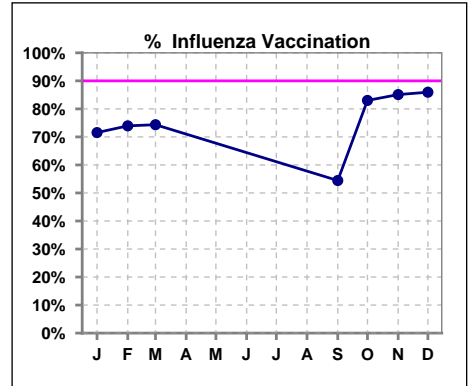
**VII. Infection Control**

**Pneumonia vaccination within the past five years**

	Jan	Feb	Mar	Apr	May	Jun	Jul	Aug	Sep	Oct	Nov	Dec
<b># Patient</b>	1266	1255	1221	1200	1188	1174	1173	1178	1175	1185	1184	1182
<b># Pneumonia</b>	708	704	695	680	664	656	653	670	692	661	745	755
<b>% Pneumonia</b>	56%	56%	57%	57%	56%	56%	56%	57%	59%	56%	63%	64%



	Jan	Feb	Mar	Apr	May	Jun	Jul	Aug	Sep	Oct	Nov	Dec
<b># Patient</b>	1262	1251	1217						1172	1178	1175	1174
<b># Influenza</b>	903	925	905						638	978	1000	1009
<b>% Influenza</b>	72%	74%	74%						54%	83%	85%	86%



Methodology: a) All labs for 'Adequacy of Dialysis', 'Nutrition', 'Osteodystrophy', 'Anemia' and 'Diabetes' based on last value of month; b) BP's and #L processed are average of all values for month; c) Access data takes last access of month; d) Values for SGA and 'Infection Control' use most recent result.