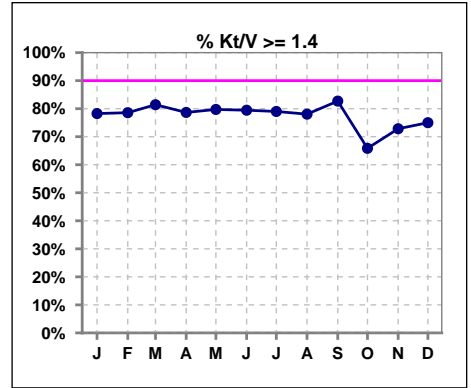
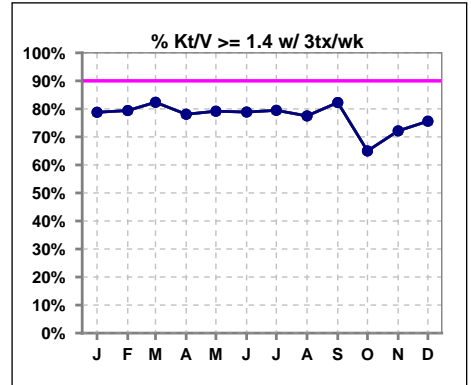


I. ADEQUACY OF DIALYSIS

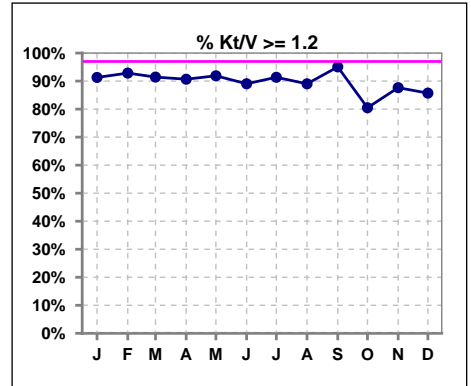
	Jan	Feb	Mar	Apr	May	Jun	Jul	Aug	Sep	Oct	Nov	Dec
# Kt/V	69	70	70	75	74	73	81	82	81	82	81	84
# Kt/V >= 1.4	54	55	57	59	59	58	64	64	67	54	59	63
Pop. Mean	1.63	1.59	1.60	1.59	1.63	1.60	1.66	1.65	1.69	1.55	1.54	1.56
Std. Deviation	0.36	0.32	0.31	0.32	0.37	0.32	0.36	0.52	0.32	0.38	0.33	0.35
% Kt/V >= 1.4	78%	79%	81%	79%	80%	79%	79%	78%	83%	66%	73%	75%



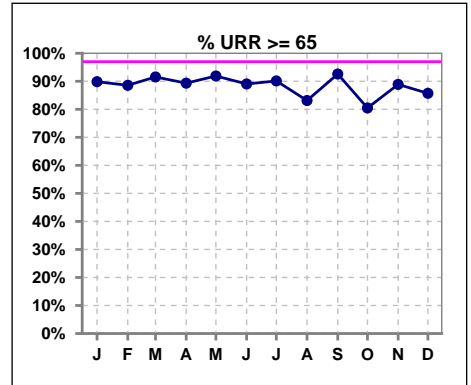
	Jan	Feb	Mar	Apr	May	Jun	Jul	Aug	Sep	Oct	Nov	Dec
# Kt/V w/ 3tx/wk	66	68	68	73	72	71	78	80	79	80	79	82
# Kt/V >= 1.4 w/ 3tx/wk	52	54	56	57	57	56	62	62	65	52	57	62
Pop. Mean	1.62	1.58	1.61	1.57	1.62	1.59	1.64	1.65	1.68	1.54	1.53	1.56
Std. Deviation	0.36	0.30	0.32	0.29	0.37	0.32	0.31	0.52	0.32	0.38	0.33	0.35
% Kt/V >= 1.4 w/ 3tx/wk	79%	79%	82%	78%	79%	79%	79%	78%	82%	65%	72%	76%



	Jan	Feb	Mar	Apr	May	Jun	Jul	Aug	Sep	Oct	Nov	Dec
# Kt/V	69	70	70	75	74	73	81	82	81	82	81	84
# Kt/V >= 1.2	63	65	64	68	68	65	74	73	77	66	71	72
Pop. Mean	1.63	1.59	1.60	1.59	1.63	1.60	1.66	1.65	1.69	1.55	1.54	1.56
Std. Deviation	0.36	0.32	0.31	0.32	0.37	0.32	0.36	0.52	0.32	0.38	0.33	0.35
% Kt/V >= 1.2	91%	93%	91%	91%	92%	89%	91%	89%	95%	80%	88%	86%



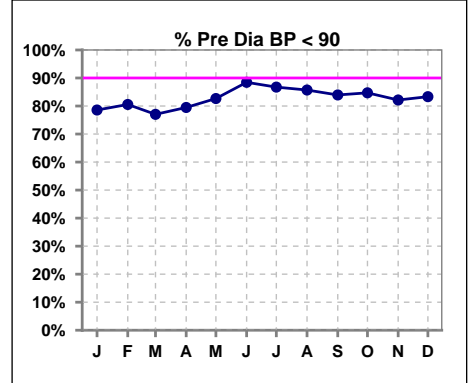
	Jan	Feb	Mar	Apr	May	Jun	Jul	Aug	Sep	Oct	Nov	Dec
# URR	69	70	71	75	74	73	81	83	81	82	81	84
# URR >= 65	62	62	65	67	68	65	73	69	75	66	72	72
Pop. Mean	74	74	73	73	74	74	75	74	76	72	72	73
Std. Deviation	7.93	7.16	6.52	7.36	6.77	7.65	6.82	8.21	6.73	9.43	8.18	8.61
% URR >= 65	90%	89%	92%	89%	92%	89%	90%	83%	93%	80%	89%	86%



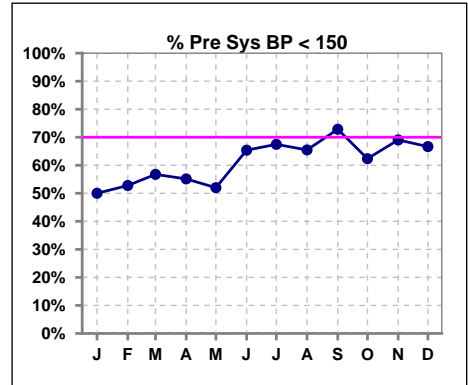
I. ADEQUACY OF DIALYSIS - CONT.

Blood Pressure Control (Pre)

	Jan	Feb	Mar	Apr	May	Jun	Jul	Aug	Sep	Oct	Nov	Dec
# Pre Dia BP	70	72	74	78	75	78	83	84	81	85	84	84
# Pre Dia BP < 90	55	58	57	62	62	69	72	72	68	72	69	70
Pop. Mean	78	77	77	77	75	74	75	73	74	75	75	75
Std. Deviation	16.2	16.1	16.3	16.9	15.1	13.9	14.1	13.5	14.3	15.0	15.3	15.4
% Pre Dia BP < 90	79%	81%	77%	79%	83%	88%	87%	86%	84%	85%	82%	83%



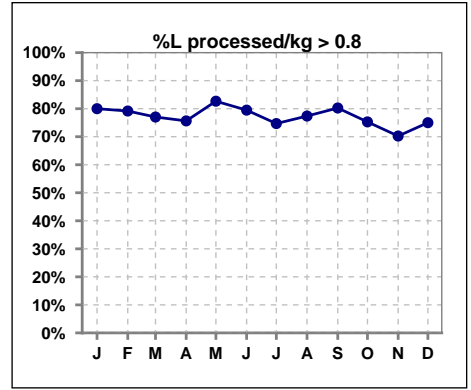
	Jan	Feb	Mar	Apr	May	Jun	Jul	Aug	Sep	Oct	Nov	Dec
# Pre Sys BP	70	72	74	78	75	78	83	84	81	85	84	84
# Pre Sys BP < 150	35	38	42	43	39	51	56	55	59	53	58	56
Pop. Mean	149	146	146	148	146	142	141	139	139	142	141	142
Std. Deviation	25.9	27.6	24.5	25.2	23.6	21.7	20.4	22.1	21.6	23.0	22.4	21.3
%Pre Sys BP <150	50%	53%	57%	55%	52%	65%	67%	65%	73%	62%	69%	67%



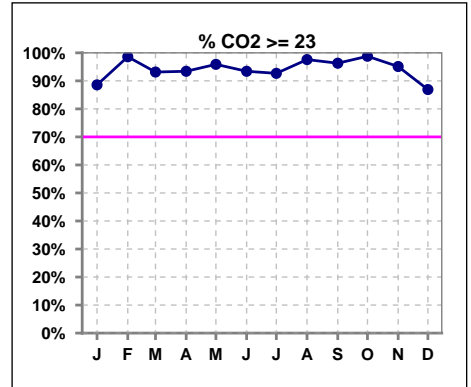
Methodology: a) All labs for 'Adequacy of Dialysis', 'Nutrition', 'Osteodystrophy', 'Anemia' and 'Diabetes' based on last value of month; b) BP's and #L processed are average of all values for month; c) Access data takes last access of month; d) Values for SGA and 'Infection Control' use most recent result.

I. ADEQUACY OF DIALYSIS - CONT.

	Jan	Feb	Mar	Apr	May	Jun	Jul	Aug	Sep	Oct	Nov	Dec
# L processed/kg	70	72	74	78	75	78	83	84	81	85	84	84
# L processed/kg>0.8	56	57	57	59	62	62	62	65	65	64	59	63
Pop. Mean	1	1	1	1	1	1	1	1	1	1	1	1
Std. Deviation	0.3	0.3	0.3	0.3	0.3	0.3	0.3	0.3	0.3	0.3	0.3	0.3
% L processed/kg>0.8	80%	79%	77%	76%	83%	79%	75%	77%	80%	75%	70%	75%



	Jan	Feb	Mar	Apr	May	Jun	Jul	Aug	Sep	Oct	Nov	Dec
# CO2	70	71	73	76	73	76	82	83	81	82	82	84
# CO2 >= 23	62	70	68	71	70	71	76	81	78	81	78	73
Pop. Mean	26	28	27	27	28	27	27	28	27	28	27	26
Std. Deviation	3.18	2.40	2.82	3.20	3.45	3.19	2.88	2.67	2.81	2.91	3.07	3.30
% CO2 >= 23	89%	99%	93%	93%	96%	93%	93%	98%	96%	99%	95%	87%

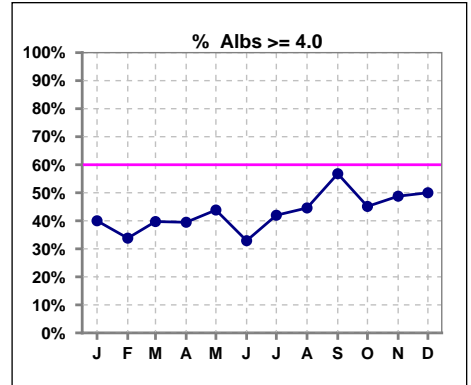


Methodology: a) All labs for 'Adequacy of Dialysis', 'Nutrition', 'Osteodystrophy', 'Anemia' and 'Diabetes' based on last value of month; b) BP's and #L processed are average of all values for month; c) Access data takes last access of month; d) Values for SGA and 'Infection Control' use most recent result.

*Albumin values use BCG method - as of July 2001

II. NUTRITION

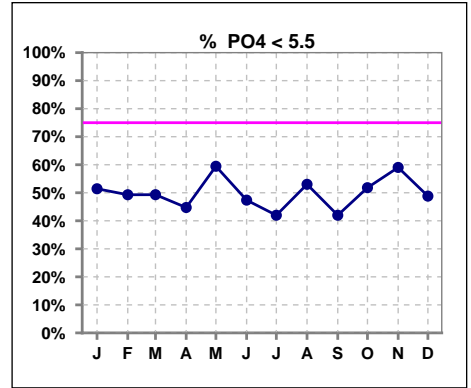
	Jan	Feb	Mar	Apr	May	Jun	Jul	Aug	Sep	Oct	Nov	Dec
# Albumin	70	71	73	76	73	76	81	83	81	82	82	84
# Albumin >= 4.0	28	24	29	30	32	25	34	37	46	37	40	42
Pop. Mean	3.8	3.7	3.8	3.8	3.8	3.8	3.8	3.8	3.9	3.8	3.9	3.8
Std. Deviation	0.44	0.50	0.50	0.46	0.45	0.42	0.48	0.51	0.49	0.49	0.44	0.56
% Alb >= 3.5	79%	76%	75%	78%	85%	80%	78%	86%	86%	83%	83%	79%
% Alb >= 3.0	97%	92%	96%	93%	95%	93%	96%	94%	94%	93%	98%	89%
% Alb >= 4.0	40%	34%	40%	39%	44%	33%	42%	45%	57%	45%	49%	50%



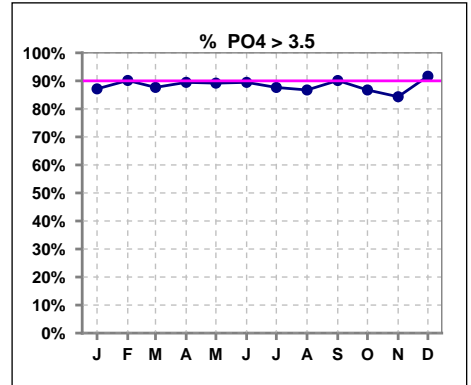
Methodology: a) All labs for 'Adequacy of Dialysis', 'Nutrition', 'Osteodystrophy', 'Anemia' and 'Diabetes' based on last value of month; b) BP's and #L processed are average of all values for month; c) Access data takes last access of month; d) Values for SGA and 'Infection Control' use most recent result.

III. OSTEODYSTROPHY

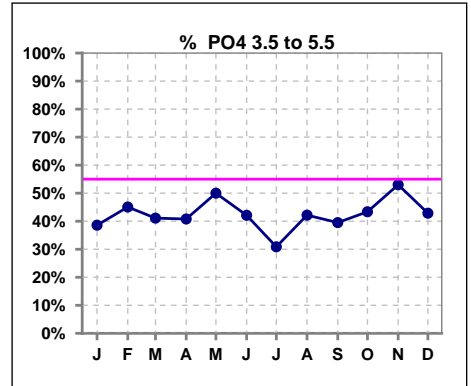
	Jan	Feb	Mar	Apr	May	Jun	Jul	Aug	Sep	Oct	Nov	Dec
# PO4	70	71	73	76	74	76	81	83	81	83	83	84
# PO4 < 5.5	36	35	36	34	44	36	34	44	34	43	49	41
Pop. Mean	5.6	5.7	5.6	5.6	5.2	5.5	5.8	5.7	5.8	5.5	5.5	5.7
Std. Deviation	1.92	1.74	1.86	1.62	1.36	1.74	2.03	2.07	1.72	1.82	1.80	1.88
% PO4 < 5.5	51%	49%	49%	45%	59%	47%	42%	53%	42%	52%	59%	49%



	Jan	Feb	Mar	Apr	May	Jun	Jul	Aug	Sep	Oct	Nov	Dec
# PO4	70	71	73	76	74	76	81	83	81	83	83	84
# PO4 > 3.5	61	64	64	68	66	68	71	72	73	72	70	77
Pop. Mean	5.6	5.7	5.6	5.6	5.2	5.5	5.8	5.7	5.8	5.5	5.5	5.7
Std. Deviation	1.92	1.74	1.86	1.62	1.36	1.74	2.03	2.07	1.72	1.82	1.80	1.88
% PO4 > 3.5	87%	90%	88%	89%	89%	89%	88%	87%	90%	87%	84%	92%

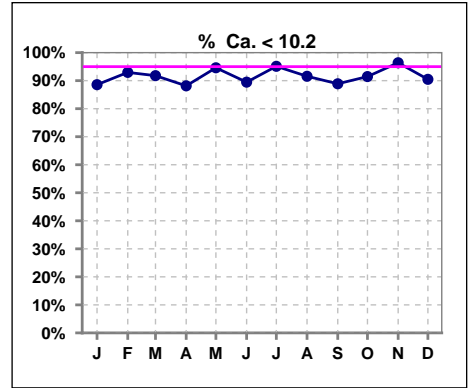


	Jan	Feb	Mar	Apr	May	Jun	Jul	Aug	Sep	Oct	Nov	Dec
# PO4	70	71	73	76	74	76	81	83	81	83	83	84
# PO4 3.5 to 5.5	27	32	30	31	37	32	25	35	32	36	44	36
Pop. Mean	5.6	5.7	5.6	5.6	5.2	5.5	5.8	5.7	5.8	5.5	5.5	5.7
Std. Deviation	1.92	1.74	1.86	1.62	1.36	1.74	2.03	2.07	1.72	1.82	1.80	1.88
% PO4 3.5 to 5.5	39%	45%	41%	41%	50%	42%	31%	42%	40%	43%	53%	43%

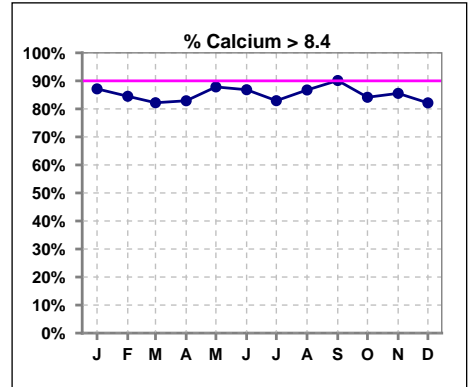


III. OSTEODYSTROPHY - CONT.

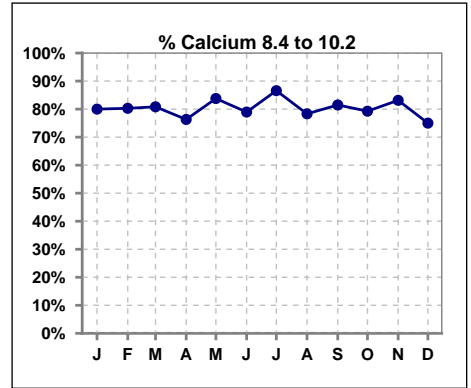
	Jan	Feb	Mar	Apr	May	Jun	Jul	Aug	Sep	Oct	Nov	Dec
# Calcium	70	71	73	76	74	76	82	83	81	82	83	84
# Calcium < 10.2	62	66	67	67	70	68	78	76	72	75	80	76
Pop. Mean	9.3	9.2	9.2	9.2	9.2	9.2	9.2	9.2	9.4	9.2	9.2	9.2
Std. Deviation	0.83	0.80	0.77	0.79	0.75	0.92	0.75	0.88	0.65	0.98	0.73	0.95
% Ca < 10.2	89%	93%	92%	88%	95%	89%	95%	92%	89%	91%	96%	90%



	Jan	Feb	Mar	Apr	May	Jun	Jul	Aug	Sep	Oct	Nov	Dec
# Calcium	70	71	73	76	74	76	82	83	81	82	83	84
# Calcium > 8.4	61	60	60	63	65	66	68	72	73	69	71	69
Pop. Mean	9.3	9.2	9.2	9.2	9.2	9.2	9.2	9.2	9.4	9.2	9.2	9.2
Std. Deviation	0.83	0.80	0.77	0.79	0.75	0.92	0.75	0.88	0.65	0.98	0.73	0.95
% Calcium > 8.4	87%	85%	82%	83%	88%	87%	83%	87%	90%	84%	86%	82%

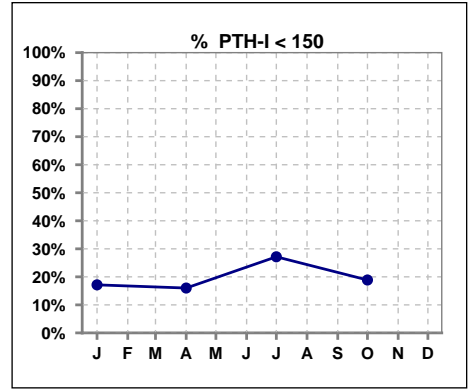


	Jan	Feb	Mar	Apr	May	Jun	Jul	Aug	Sep	Oct	Nov	Dec
# Calcium	70	71	73	76	74	76	82	83	81	82	83	84
# Calcium 8.4 to 10.2	56	57	59	58	62	60	71	65	66	65	69	63
Pop. Mean	9.3	9.2	9.2	9.2	9.2	9.2	9.2	9.2	9.4	9.2	9.2	9.2
Std. Deviation	0.83	0.80	0.77	0.79	0.75	0.92	0.75	0.88	0.65	0.98	0.73	0.95
% Calcium 8.4 to 10.2	80%	80%	81%	76%	84%	79%	87%	78%	81%	79%	83%	75%

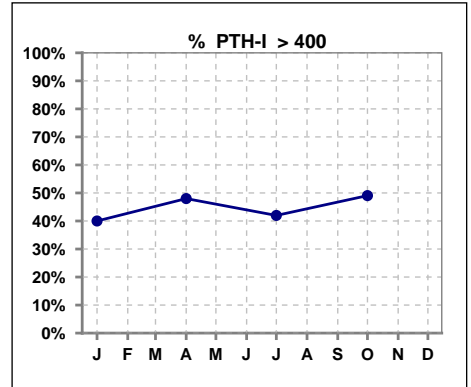


III. OSTEODYSTROPHY - CONT.

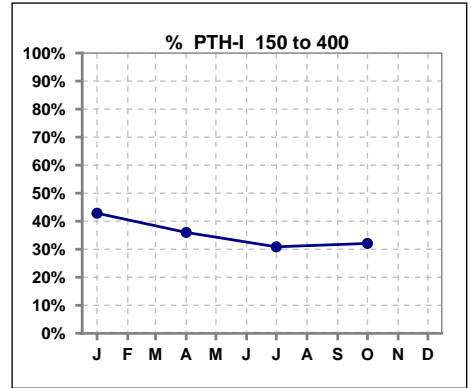
	Jan	Feb	Mar	Apr	May	Jun	Jul	Aug	Sep	Oct	Nov	Dec
# PTH-I	70			75			81			53		
# PTH-I < 150	12			12			22			10		
Pop. Mean	530			599			520			505		
Std. Deviation	515			681			580			455		
% PTH-I < 150	17%			16%			27%			19%		



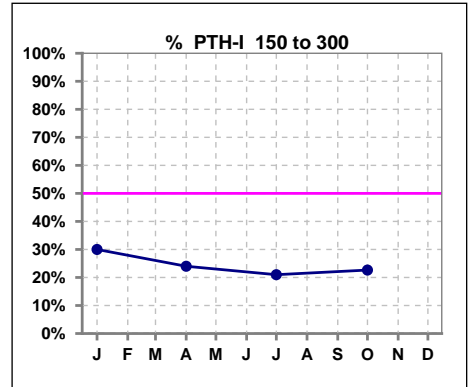
	Jan	Feb	Mar	Apr	May	Jun	Jul	Aug	Sep	Oct	Nov	Dec
# PTH-I	70			75			81			53		
# PTH-I > 400	28			36			34			26		
Pop. Mean	530			599			520			505		
Std. Deviation	515			681			580			455		
% PTH-I > 400	40%			48%			42%			49%		



	Jan	Feb	Mar	Apr	May	Jun	Jul	Aug	Sep	Oct	Nov	Dec
# PTH-I	70			75			81			53		
# PTH-I 150 to 400	30			27			25			17		
Pop. Mean	530			599			520			505		
Std. Deviation	515			681			580			455		
% PTH-I 150 to 400	43%			36%			31%			32%		



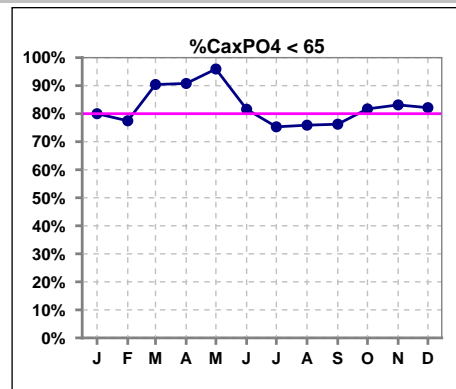
	Jan	Feb	Mar	Apr	May	Jun	Jul	Aug	Sep	Oct	Nov	Dec
# PTH-I	70			75			81			53		
# PTH-I 150 to 300	21			18			17			12		
Pop. Mean	530			599			520			505		
Std. Deviation	515			681			580			455		
% PTH-I 150 to 300	30%			24%			21%			23%		



Methodology: a) All labs for 'Adequacy of Dialysis', 'Nutrition', 'Osteodystrophy', 'Anemia' and 'Diabetes' based on last value of month; b) BP's and #L processed are average of all values for month; c) Access data takes last access of month; d) Values for SGA and 'Infection Control' use most recent result.

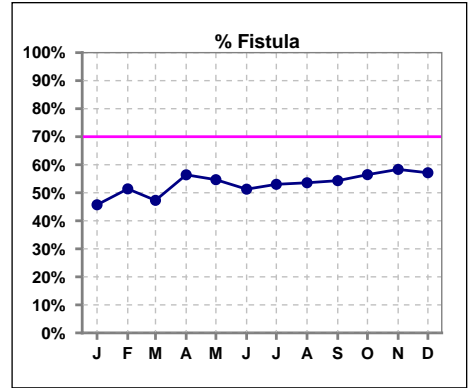
III. OSTEODYSTROPHY - CONT.

	Jan	Feb	Mar	Apr	May	Jun	Jul	Aug	Sep	Oct	Nov	Dec
# Ca x PO4	70	71	73	76	74	76	81	83	80	82	83	84
# Ca x PO4 < 65	56	55	66	69	71	62	61	63	61	67	69	69
Pop. Mean	51.7	52.7	50.5	50.8	47.3	50.8	53.4	52.9	53.9	50.4	50.3	53.2
Std. Deviation	17.4	16.2	16.1	14.1	12.4	16.1	18.5	18.9	17.3	16.9	16.4	17.2
% Ca x PO4 < 65	80%	77%	90%	91%	96%	82%	75%	76%	76%	82%	83%	82%

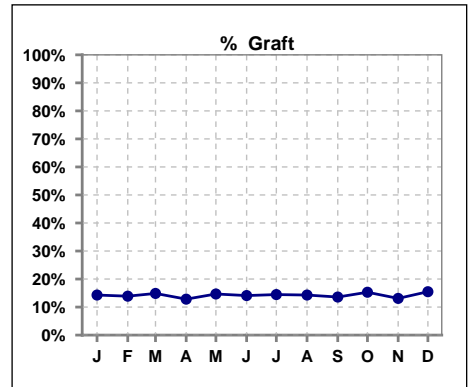


IV. ACCESS

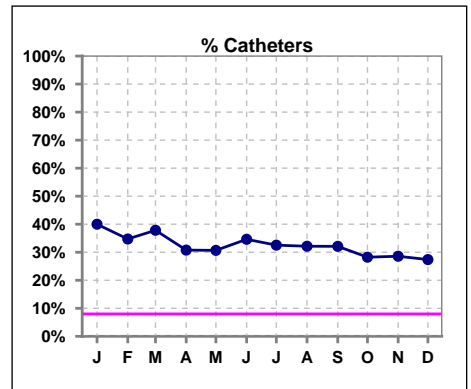
	Jan	Feb	Mar	Apr	May	Jun	Jul	Aug	Sep	Oct	Nov	Dec
# Access	70	72	74	78	75	78	83	84	81	85	84	84
# Fistula	32	37	35	44	41	40	44	45	44	48	49	48
% Fistula	46%	51%	47%	56%	55%	51%	53%	54%	54%	56%	58%	57%



	Jan	Feb	Mar	Apr	May	Jun	Jul	Aug	Sep	Oct	Nov	Dec
# Access	70	72	74	78	75	78	83	84	81	85	84	84
# Graft	10	10	11	10	11	11	12	12	11	13	11	13
% Graft	14%	14%	15%	13%	15%	14%	14%	14%	14%	15%	13%	15%



	Jan	Feb	Mar	Apr	May	Jun	Jul	Aug	Sep	Oct	Nov	Dec
# Access	70	72	74	78	75	78	83	84	81	85	84	84
# Catheters	28	25	28	24	23	27	27	27	26	24	24	23
% Catheters	40%	35%	38%	31%	31%	35%	33%	32%	32%	28%	29%	27%

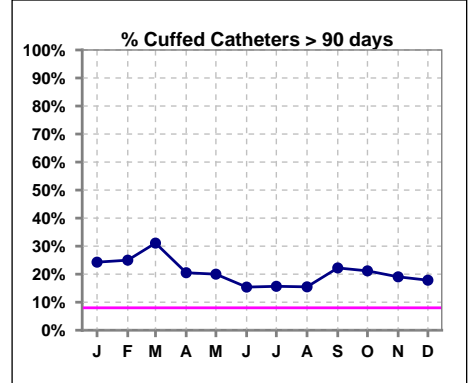


Methodology: a) All labs for 'Adequacy of Dialysis', 'Nutrition', 'Osteodystrophy', 'Anemia' and 'Diabetes' based on last value of month; b) BP's and #L processed are average of all values for month; c) Access data takes last access of month; d) Values for SGA and 'Infection Control' use most recent result.

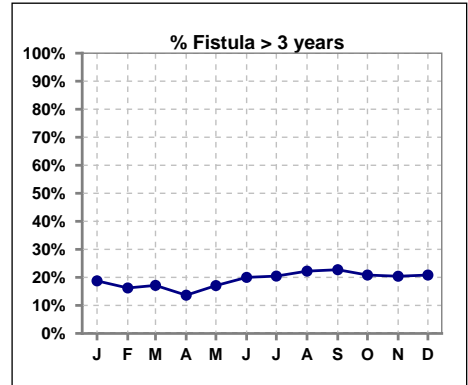
IV. ACCESS - CONT.

Cuffed Catheters > 90 days

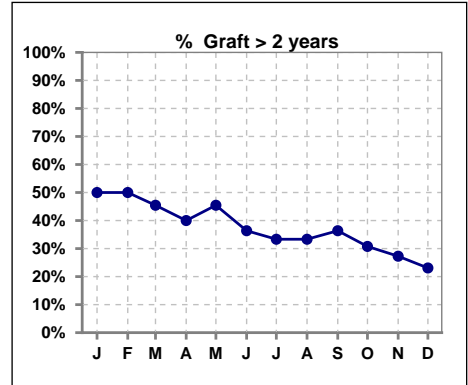
	Jan	Feb	Mar	Apr	May	Jun	Jul	Aug	Sep	Oct	Nov	Dec
# Access	70	72	74	78	75	78	83	84	81	85	84	84
# Cuffed Catheters	17	18	23	16	15	12	13	13	18	18	16	15
% Cuffed Catheters	24%	25%	31%	21%	20%	15%	16%	15%	22%	21%	19%	18%



	Jan	Feb	Mar	Apr	May	Jun	Jul	Aug	Sep	Oct	Nov	Dec
# Fistula	32	37	35	44	41	40	44	45	44	48	49	48
# Fistula > 3 yrs	6	6	6	6	7	8	9	10	10	10	10	10
% Fistula > 3 yrs	19%	16%	17%	14%	17%	20%	20%	22%	23%	21%	20%	21%



	Jan	Feb	Mar	Apr	May	Jun	Jul	Aug	Sep	Oct	Nov	Dec
# Graft	10	10	11	10	11	11	12	12	11	13	11	13
# Graft > 2 yrs	5	5	5	4	5	4	4	4	4	4	3	3
% Graft > 2 yrs	50%	50%	45%	40%	45%	36%	33%	33%	36%	31%	27%	23%

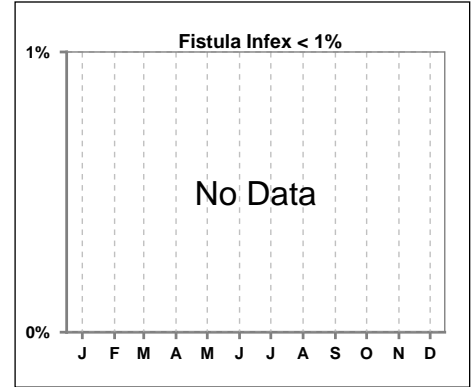


Methodology: a) All labs for 'Adequacy of Dialysis', 'Nutrition', 'Osteodystrophy', 'Anemia' and 'Diabetes' based on last value of month; b) BP's and #L processed are average of all values for month; c) Access data takes last access of month; d) Values for SGA and 'Infection Control' use most recent result.

IV. ACCESS - CONT.

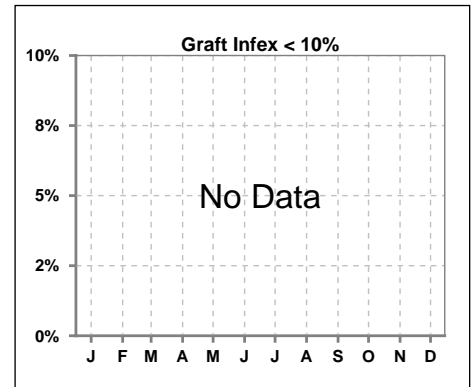
Infection per use-life of access fistula

	Jan	Feb	Mar	Apr	May	Jun	Jul	Aug	Sep	Oct	Nov	Dec
Infex per use-life												



Infection per use-life of access graft

	Jan	Feb	Mar	Apr	May	Jun	Jul	Aug	Sep	Oct	Nov	Dec
Infex per use-life												



Thrombosis Episode - access fistula

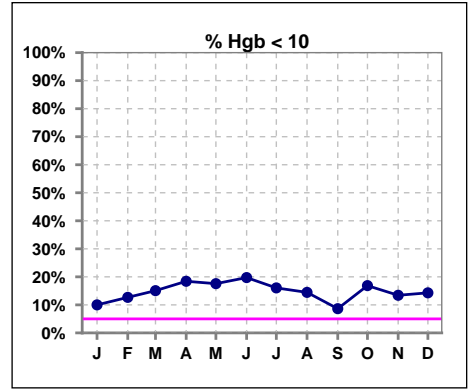
	Jan	Feb	Mar	Apr	May	Jun	Jul	Aug	Sep	Oct	Nov	Dec
Current Month						0.16		0.07				
Rolling Year-to-date						0.06	0.06	0.05	0.04	0.03	0.03	0.02

Thrombosis Episode - access graft

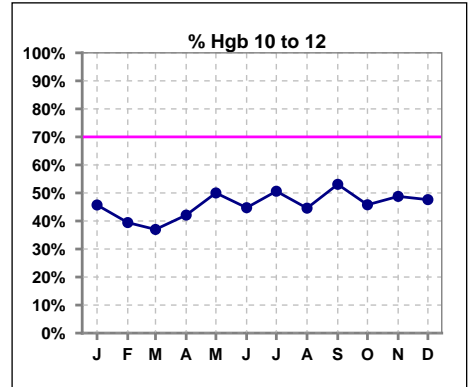
	Jan	Feb	Mar	Apr	May	Jun	Jul	Aug	Sep	Oct	Nov	Dec
Current Month											0.15	
Rolling Year-to-date						0.14	0.06	0.05	0.04	0.07	0.09	0.08

V. ANEMIA

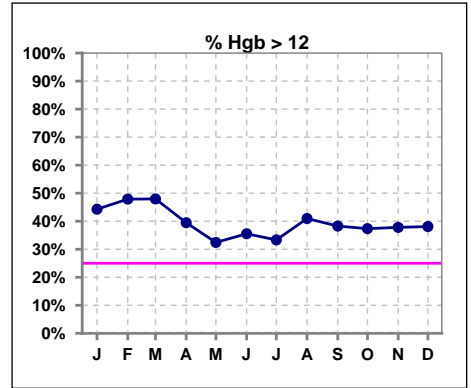
	Jan	Feb	Mar	Apr	May	Jun	Jul	Aug	Sep	Oct	Nov	Dec
# Hgb	70	71	73	76	74	76	81	83	81	83	82	84
# Hgb < 10	7	9	11	14	13	15	13	12	7	14	11	12
Pop. Mean	11.9	12.0	11.9	11.6	11.4	11.4	11.4	11.7	11.8	11.4	11.6	11.6
Std. Deviation	1.6	1.6	1.7	1.6	1.7	1.5	1.7	1.4	1.6	1.5	1.4	1.5
% Hgb < 10	10%	13%	15%	18%	18%	20%	16%	14%	9%	17%	13%	14%



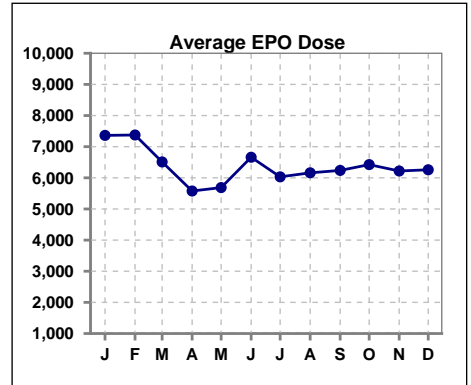
	Jan	Feb	Mar	Apr	May	Jun	Jul	Aug	Sep	Oct	Nov	Dec
# Hgb	70	71	73	76	74	76	81	83	81	83	82	84
# Hgb 10 to 12	32	28	27	32	37	34	41	37	43	38	40	40
Pop. Mean	11.9	12.0	11.9	11.6	11.4	11.4	11.4	11.7	11.8	11.4	11.6	11.6
Std. Deviation	1.6	1.6	1.7	1.6	1.7	1.5	1.7	1.4	1.6	1.5	1.4	1.5
% Hgb 10 to 12	46%	39%	37%	42%	50%	45%	51%	45%	53%	46%	49%	48%



	Jan	Feb	Mar	Apr	May	Jun	Jul	Aug	Sep	Oct	Nov	Dec
# Hgb	70	71	73	76	74	76	81	83	81	83	82	84
# Hgb > 12	31	34	35	30	24	27	27	34	31	31	31	32
Pop. Mean	11.9	12.0	11.9	11.6	11.4	11.4	11.4	11.7	11.8	11.4	11.6	11.6
Std. Deviation	1.6	1.6	1.7	1.6	1.7	1.5	1.7	1.4	1.6	1.5	1.4	1.5
% Hgb > 12	44%	48%	48%	39%	32%	36%	33%	41%	38%	37%	38%	38%



	Jan	Feb	Mar	Apr	May	Jun	Jul	Aug	Sep	Oct	Nov	Dec
# Average EPO Dose	7363	7375	6509	5576	5686	6661	6031	6161	6238	6424	6219	6258

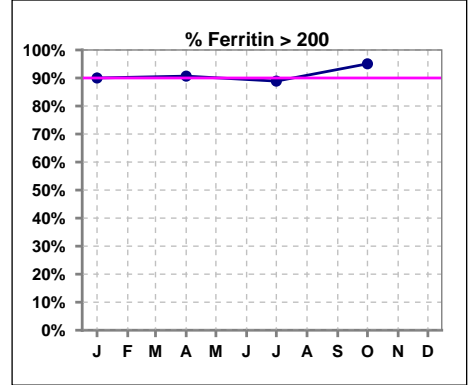


Methodology: a) All labs for 'Adequacy of Dialysis', 'Nutrition', 'Osteodystrophy', 'Anemia' and 'Diabetes' based on last value of month; b) BP's and #L processed are average of all values for month; c) Access data takes last access of month; d) Values for SGA and 'Infection Control' use most recent result.

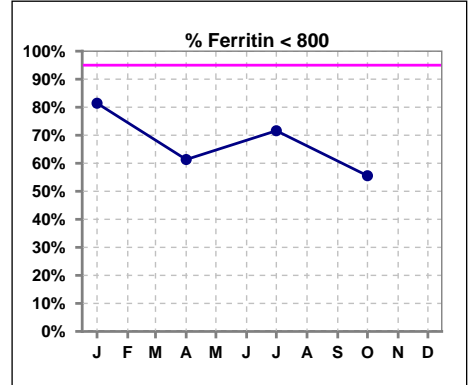
V. ANEMIA - CONT.

Iron Profile

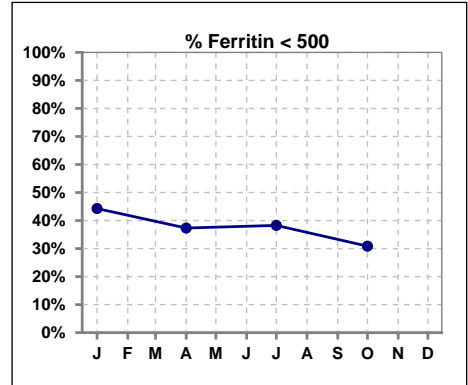
	Jan	Feb	Mar	Apr	May	Jun	Jul	Aug	Sep	Oct	Nov	Dec
# Ferritin	70			75			81			81		
# Ferritin > 200	63			68			72			77		
Pop. Mean	538			754			619			780		
Std. Deviation	265			528			341			479		
% Ferritin > 200	90%			91%			89%			95%		



	Jan	Feb	Mar	Apr	May	Jun	Jul	Aug	Sep	Oct	Nov	Dec
# Ferritin	70			75			81			81		
# Ferritin < 800	57			46			58			45		
Pop. Mean	538			754			619			780		
Std. Deviation	265			528			341			479		
% Ferritin < 800	81%			61%			72%			56%		



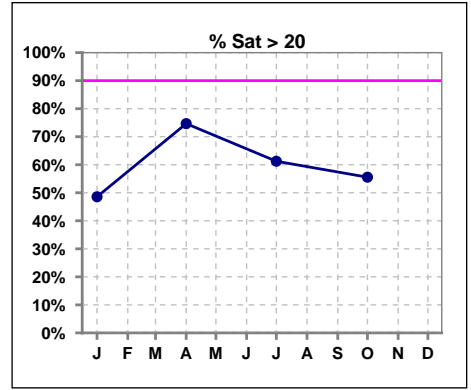
	Jan	Feb	Mar	Apr	May	Jun	Jul	Aug	Sep	Oct	Nov	Dec
# Ferritin	70			75			81			81		
# Ferritin < 500	31			28			31			25		
Pop. Mean	538			754			619			780		
Std. Deviation	265			528			341			479		
% Ferritin < 500	44%			37%			38%			31%		



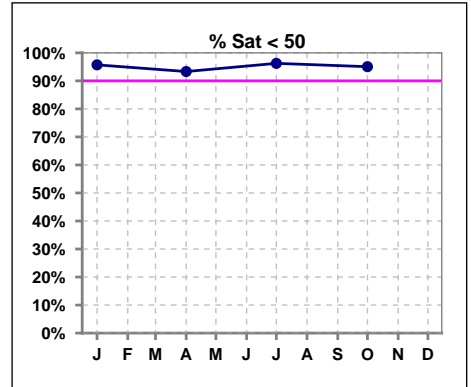
Methodology: a) All labs for 'Adequacy of Dialysis', 'Nutrition', 'Osteodystrophy', 'Anemia' and 'Diabetes' based on last value of month; b) BP's and #L processed are average of all values for month; c) Access data takes last access of month; d) Values for SGA and 'Infection Control' use most recent result.

V. ANEMIA - CONT.

	Jan	Feb	Mar	Apr	May	Jun	Jul	Aug	Sep	Oct	Nov	Dec
# % Sat	70			75			80			81		
# % Sat > 20	34			56			49			45		
Pop. Mean	24			28			26			26		
Std. Deviation	12			14			10			12		
% Sat% > 20	49%			75%			61%			56%		

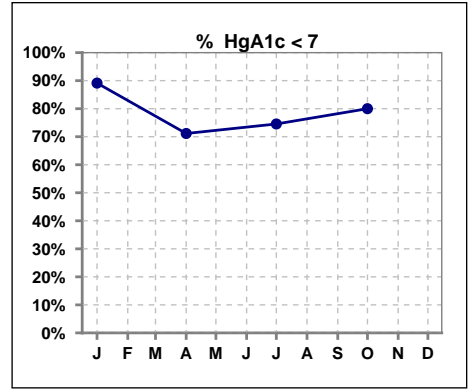


	Jan	Feb	Mar	Apr	May	Jun	Jul	Aug	Sep	Oct	Nov	Dec
# % Sat	70			75			80			81		
# % Sat < 50	67			70			77			77		
Pop. Mean	24			28			26			26		
Std. Deviation	12			14			10			12		
% Sat% < 50	96%			93%			96%			95%		



VI. Diabetes

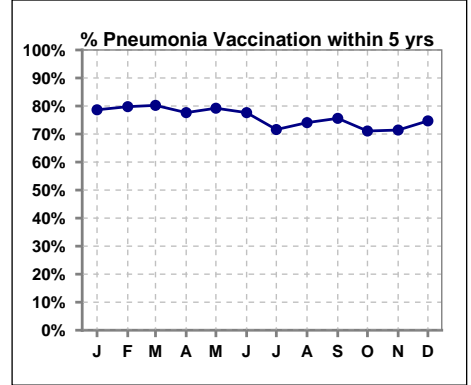
	Jan	Feb	Mar	Apr	May	Jun	Jul	Aug	Sep	Oct	Nov	Dec
# HgA1c	46			52			55			55		
# HgA1c < 7	41			37			41			44		
Pop. Mean	6.0			6.5			6.3			6.4		
Std. Deviation	1.05			1.13			1.16			1.35		
% HgA1c < 7	89%			71%			75%			80%		



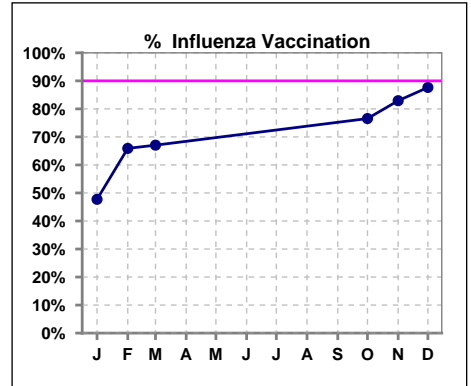
VII. Infection Control

Pneumonia vaccination within the past five years

	Jan	Feb	Mar	Apr	May	Jun	Jul	Aug	Sep	Oct	Nov	Dec
# Patient	89	89	86	85	77	76	81	81	82	83	84	83
# Pneumonia	70	71	69	66	61	59	58	60	62	59	60	62
% Pneumonia	79%	80%	80%	78%	79%	78%	72%	74%	76%	71%	71%	75%



	Jan	Feb	Mar	Apr	May	Jun	Jul	Aug	Sep	Oct	Nov	Dec
# Patient	88	88	85						82	81	82	81
# Influenza	42	58	57							62	68	71
% Influenza	48%	66%	67%							77%	83%	88%



Methodology: a) All labs for 'Adequacy of Dialysis', 'Nutrition', 'Osteodystrophy', 'Anemia' and 'Diabetes' based on last value of month; b) BP's and #L processed are average of all values for month; c) Access data takes last access of month; d) Values for SGA and 'Infection Control' use most recent result.