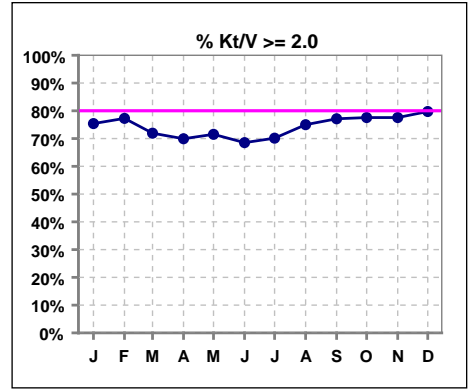
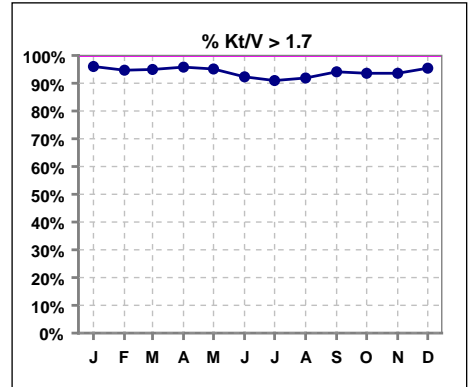


I. ADEQUACY OF DIALYSIS

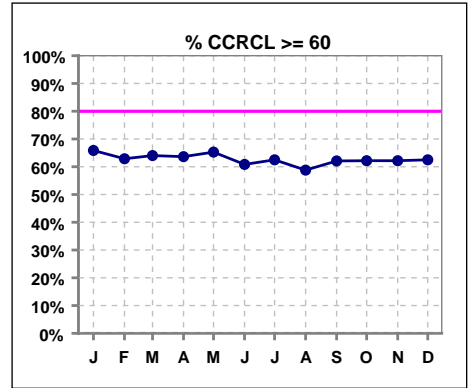
	Jan	Feb	Mar	Apr	May	Jun	Jul	Aug	Sep	Oct	Nov	Dec
# Kt/V - CA/CC PD	126	132	139	143	144	143	144	148	153	156	156	153
# Kt/V >= 2.0	95	102	100	100	103	98	101	111	118	121	121	122
Pop. Mean	2.36	2.37	2.33	2.35	2.35	2.34	2.31	2.33	2.33	2.36	2.36	2.40
Std. Deviation	0.58	0.57	0.55	0.59	0.56	0.59	0.55	0.56	0.56	0.58	0.57	0.59
% Kt/V >= 2.0	75%	77%	72%	70%	72%	69%	70%	75%	77%	78%	78%	80%



	Jan	Feb	Mar	Apr	May	Jun	Jul	Aug	Sep	Oct	Nov	Dec
# Kt/V - CA/CC PD	126	132	139	143	144	143	144	148	153	156	156	153
# Kt/V >= 1.7	121	125	132	137	137	132	131	136	144	146	146	146
# Kt/V > 1.7												
Pop. Mean	2.36	2.37	2.33	2.35	2.35	2.34	2.31	2.33	2.33	2.36	2.36	2.40
Std. Deviation	0.58	0.57	0.55	0.59	0.56	0.59	0.55	0.56	0.56	0.58	0.57	0.59
% Kt/V >= 1.7	96%	95%	95%	96%	95%	92%	91%	92%	94%	94%	94%	95%



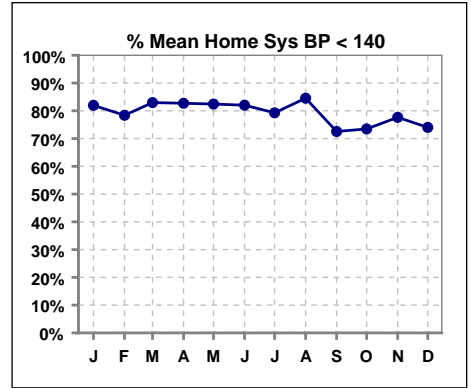
	Jan	Feb	Mar	Apr	May	Jun	Jul	Aug	Sep	Oct	Nov	Dec
# CRCL CA/CC PD	126	132	139	143	144	143	144	148	153	156	156	152
# CCRCL >= 60	83	83	89	91	94	87	90	87	95	97	97	95
Pop. Mean	82.64	82.47	78.80	80.78	80.45	80.14	79.12	78.49	79.22	81.34	80.01	83.44
Std. Deviation	48.87	48.14	36.70	40.03	38.79	39.71	36.48	35.76	36.02	39.25	37.21	42.46
% CCRCL >= 60	66%	63%	64%	64%	65%	61%	63%	59%	62%	62%	62%	63%



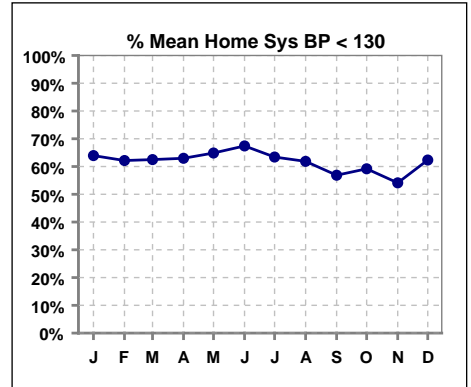
Methodology: a) Kt/V, CRCL and nPNa values are 4 month rolling mean of last value for each month, all other report lab results are based on last value of month; b) BP's are average of all values for month.

I. ADEQUACY OF DIALYSIS - CONT.

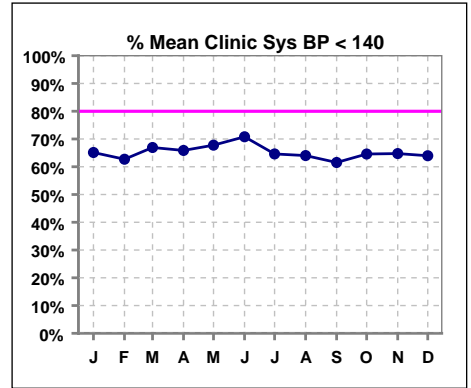
	Jan	Feb	Mar	Apr	May	Jun	Jul	Aug	Sep	Oct	Nov	Dec
# Mean Home Sys BP	61	74	88	81	74	89	82	97	102	98	85	77
# Sys BP < 140	50	58	73	67	61	73	65	82	74	72	66	57
Pop. Mean	125	125	125	125	125	124	126	124	128	128	127	126
Std. Deviation	17.3	17.9	16.9	17.7	19.3	15.4	17.9	16.0	19.1	19.8	19.3	19.7
% Sys BP <140	82%	78%	83%	83%	82%	82%	79%	85%	73%	73%	78%	74%



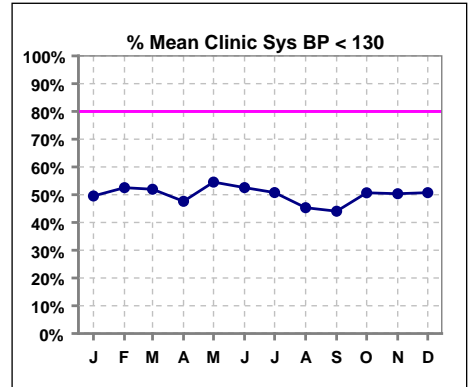
	Jan	Feb	Mar	Apr	May	Jun	Jul	Aug	Sep	Oct	Nov	Dec
# Mean Home Sys BP	61	74	88	81	74	89	82	97	102	98	85	77
# Sys BP < 130	39	46	55	51	48	60	52	60	58	58	46	48
Pop. Mean	125	125	125	125	125	124	126	124	128	128	127	126
Std. Deviation	17.3	17.9	16.9	17.7	19.3	15.4	17.9	16.0	19.1	19.8	19.3	19.7
% Sys BP <130	64%	62%	63%	63%	65%	67%	63%	62%	57%	59%	54%	62%



	Jan	Feb	Mar	Apr	May	Jun	Jul	Aug	Sep	Oct	Nov	Dec
# Mean Clinic Sys BP	109	118	127	126	121	137	130	139	143	144	139	136
# Sys BP < 140	71	74	85	83	82	97	84	89	88	93	90	87
Pop. Mean	134	132	132	132	133	128	130	132	134	132	131	133
Std. Deviation	26.6	26.0	25.1	25.9	25.4	24.9	23.7	22.0	25.7	27.6	25.3	28.0
% Sys BP <140	65%	63%	67%	66%	68%	71%	65%	64%	62%	65%	65%	64%

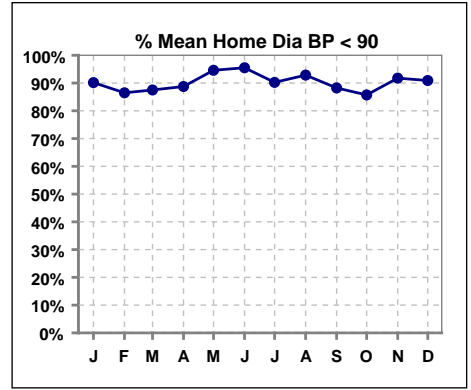


	Jan	Feb	Mar	Apr	May	Jun	Jul	Aug	Sep	Oct	Nov	Dec
# Mean Clinic Sys BP	109	118	127	126	121	137	130	139	143	144	139	136
# Sys BP < 130	54	62	66	60	66	72	66	63	63	73	70	69
Pop. Mean	134	132	132	132	133	128	130	132	134	132	131	133
Std. Deviation	26.6	26.0	25.1	25.9	25.4	24.9	23.7	22.0	25.7	27.6	25.3	28.0
% Sys BP <130	50%	53%	52%	48%	55%	53%	51%	45%	44%	51%	50%	51%

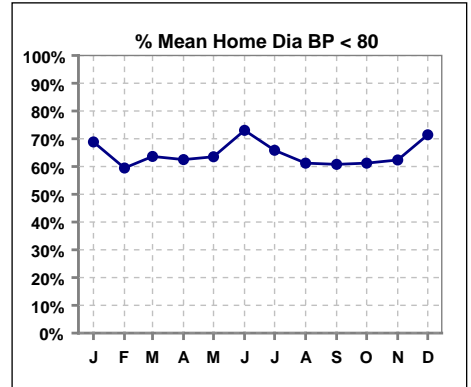


I. ADEQUACY OF DIALYSIS - CONT.

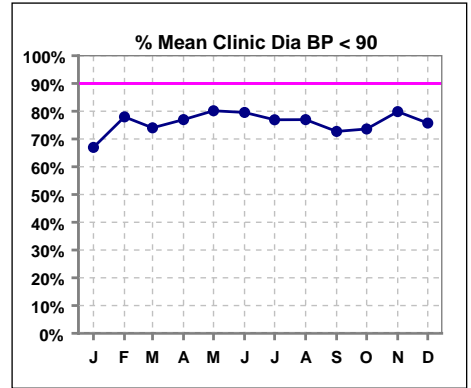
	Jan	Feb	Mar	Apr	May	Jun	Jul	Aug	Sep	Oct	Nov	Dec
# Mean Home Dia BP	61	74	88	80	74	89	82	98	102	98	85	77
# Dia BP < 90	55	64	77	71	70	85	74	91	90	84	78	70
Pop. Mean	74	76	76	75	74	74	74	75	76	76	74	74
Std. Deviation	12.4	11.2	12.4	12.3	12.3	11.5	12.6	14.4	12.6	13.3	12.5	12.1
% Dia BP < 90	90%	86%	88%	89%	95%	96%	90%	93%	88%	86%	92%	91%



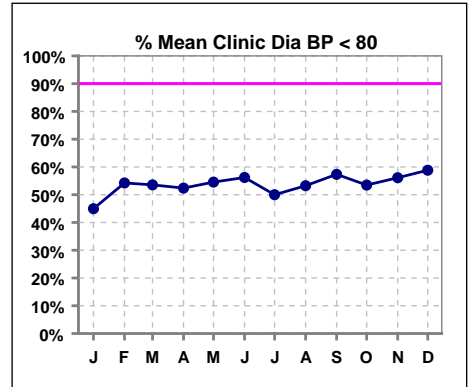
	Jan	Feb	Mar	Apr	May	Jun	Jul	Aug	Sep	Oct	Nov	Dec
# Mean Home Dia BP	61	74	88	80	74	89	82	98	102	98	85	77
# Dia BP < 80	42	44	56	50	47	65	54	60	62	60	53	55
Pop. Mean	74	76	76	75	74	74	74	75	76	76	74	74
Std. Deviation	12.4	11.2	12.4	12.3	12.3	11.5	12.6	14.4	12.6	13.3	12.5	12.1
% Dia BP < 80	69%	59%	64%	63%	64%	73%	66%	61%	61%	61%	62%	71%



	Jan	Feb	Mar	Apr	May	Jun	Jul	Aug	Sep	Oct	Nov	Dec
# Mean Clinic Dia BP	109	118	127	126	121	137	130	139	143	144	139	136
# Dia BP < 90	73	92	94	97	97	109	100	107	104	106	111	103
Pop. Mean	82	79	80	79	77	76	78	78	78	78	77	78
Std. Deviation	15.1	13.0	14.4	15.7	15.1	15.2	15.8	15.5	16.1	15.6	14.6	14.7
% Dia BP < 90	67%	78%	74%	77%	80%	80%	77%	77%	73%	74%	80%	76%

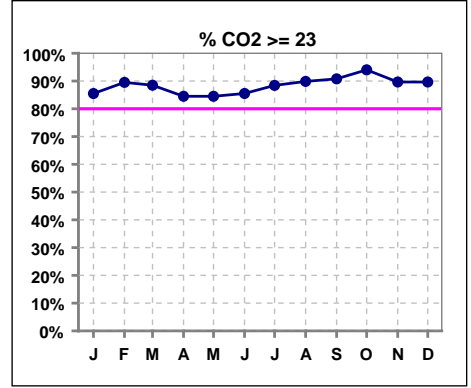


	Jan	Feb	Mar	Apr	May	Jun	Jul	Aug	Sep	Oct	Nov	Dec
# Mean Clinic Dia BP	109	118	127	126	121	137	130	139	143	144	139	136
# Dia BP < 80	49	64	68	66	66	77	65	74	82	77	78	80
Pop. Mean	82	79	80	79	77	76	78	78	78	78	77	78
Std. Deviation	15.1	13.0	14.4	15.7	15.1	15.2	15.8	15.5	16.1	15.6	14.6	14.7
% Dia BP < 80	45%	54%	54%	52%	55%	56%	50%	53%	57%	53%	56%	59%



I. ADEQUACY OF DIALYSIS - CONT.

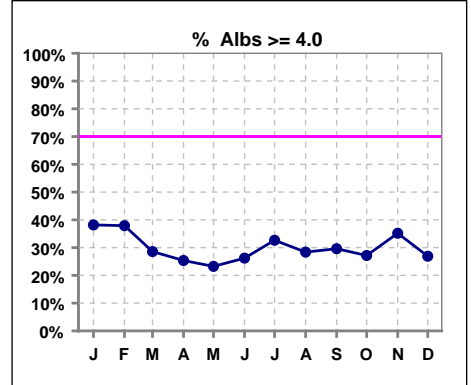
	Jan	Feb	Mar	Apr	May	Jun	Jul	Aug	Sep	Oct	Nov	Dec
# CO2	131	124	139	142	142	145	147	148	152	151	145	145
# CO2 >= 23	112	111	123	120	120	124	130	133	138	142	130	130
Pop. Mean	26	26	26	26	26	26	26	27	27	27	27	27
Std. Deviation	3.22	2.84	3.27	3.21	3.42	3.24	3.02	3.19	3.13	3.17	3.33	2.99
% CO2 >= 23	85%	90%	88%	85%	85%	86%	88%	90%	91%	94%	90%	90%



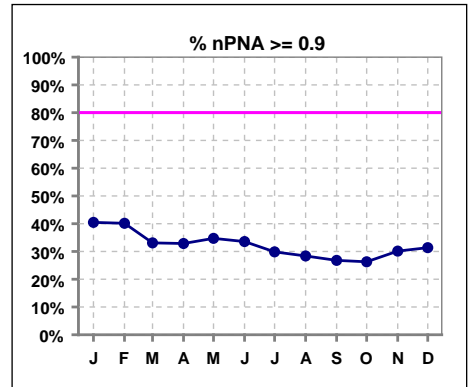
*Albumin values use BCG method - as of July 2001

II. NUTRITION

	Jan	Feb	Mar	Apr	May	Jun	Jul	Aug	Sep	Oct	Nov	Dec
# Albumin	131	124	140	142	142	145	147	148	152	151	145	145
# Albumin >= 4.0	50	47	40	36	33	38	48	42	45	41	51	39
Pop. Mean	3.8	3.8	3.7	3.7	3.7	3.7	3.8	3.7	3.7	3.7	3.8	3.7
Std. Deviation	0.44	0.41	0.42	0.37	0.36	0.39	0.39	0.44	0.43	0.41	0.42	0.40
% Alb >= 3.0	97%	97%	98%	96%	98%	97%	97%	93%	96%	97%	98%	97%
% Alb >= 3.5	83%	83%	74%	79%	79%	74%	82%	75%	76%	77%	83%	79%
% Alb >= 4.0	38%	38%	29%	25%	23%	26%	33%	28%	30%	27%	35%	27%

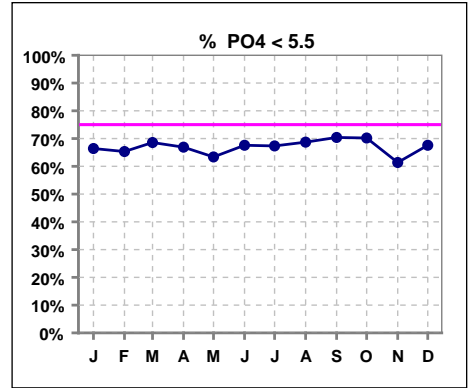


	Jan	Feb	Mar	Apr	May	Jun	Jul	Aug	Sep	Oct	Nov	Dec
# nPNA	126	132	139	143	144	143	144	148	153	156	156	153
# nPNA >= 0.9	51	53	46	47	50	48	43	42	41	41	47	48
Pop. Mean	0.8	0.8	0.8	0.8	0.8	0.8	0.8	0.8	0.8	0.8	0.8	0.8
Std. Deviation	0.23	0.22	0.22	0.22	0.21	0.22	0.22	0.22	0.23	0.24	0.24	0.26
% nPNA >= 0.9	40%	40%	33%	33%	35%	34%	30%	28%	27%	26%	30%	31%

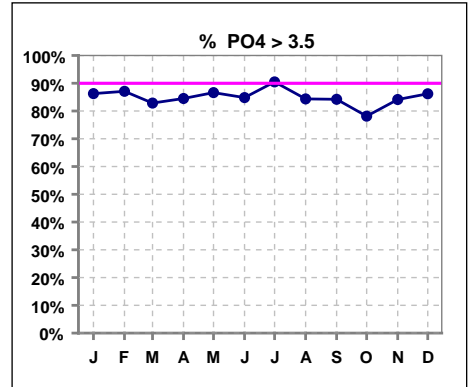


III. OSTEODYSTROPHY

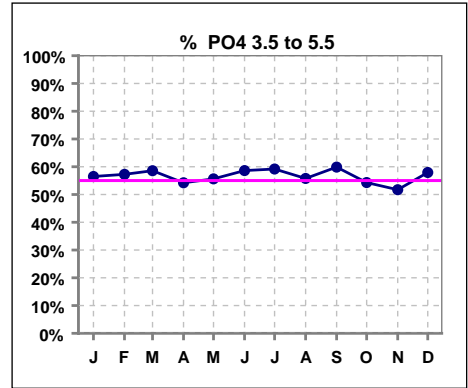
	Jan	Feb	Mar	Apr	May	Jun	Jul	Aug	Sep	Oct	Nov	Dec
# PO4	131	124	140	142	142	145	147	147	152	151	145	145
# PO4 < 5.5	87	81	96	95	90	98	99	101	107	106	89	98
Pop. Mean	5.1	5.1	5.0	5.1	5.1	5.0	5.1	4.9	4.9	4.9	5.1	5.1
Std. Deviation	1.65	1.49	1.56	1.66	1.54	1.47	1.32	1.44	1.44	1.54	1.69	1.76
% PO4 < 5.5	66%	65%	69%	67%	63%	68%	67%	69%	70%	70%	61%	68%



	Jan	Feb	Mar	Apr	May	Jun	Jul	Aug	Sep	Oct	Nov	Dec
# PO4	131	124	140	142	142	145	147	147	152	151	145	145
# PO4 > 3.5	113	108	116	120	123	123	133	124	128	118	122	125
Pop. Mean	5.1	5.1	5.0	5.1	5.1	5.0	5.1	4.9	4.9	4.9	5.1	5.1
Std. Deviation	1.65	1.49	1.56	1.66	1.54	1.47	1.32	1.44	1.44	1.54	1.69	1.76
% PO4 > 3.5	86%	87%	83%	85%	87%	85%	90%	84%	84%	78%	84%	86%

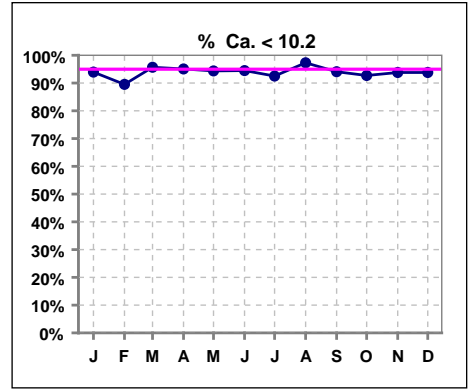


	Jan	Feb	Mar	Apr	May	Jun	Jul	Aug	Sep	Oct	Nov	Dec
# PO4	131	124	140	142	142	145	147	147	152	151	145	145
# PO4 3.5 to 5.5	74	71	82	77	79	85	87	82	91	82	75	84
Pop. Mean	5.1	5.1	5.0	5.1	5.1	5.0	5.1	4.9	4.9	4.9	5.1	5.1
Std. Deviation	1.65	1.49	1.56	1.66	1.54	1.47	1.32	1.44	1.44	1.54	1.69	1.76
% PO4 3.5 to 5.5	56%	57%	59%	54%	56%	59%	59%	56%	60%	54%	52%	58%

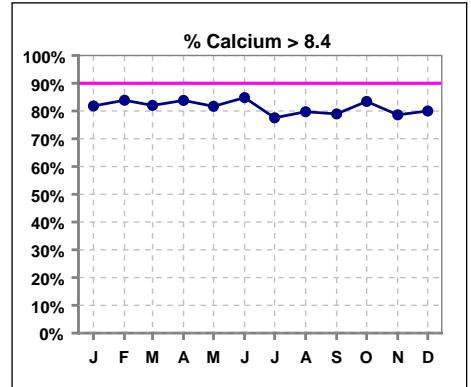


III. OSTEODYSTROPHY - CONT.

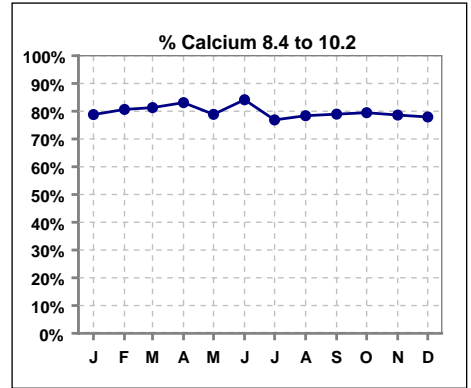
	Jan	Feb	Mar	Apr	May	Jun	Jul	Aug	Sep	Oct	Nov	Dec
# Calcium	132	124	139	142	142	145	147	148	152	151	145	145
# Calcium < 10.2	124	111	133	135	134	137	136	144	143	140	136	136
Pop. Mean	9.1	9.1	9.0	9.0	9.0	9.1	9.0	8.9	9.0	9.0	9.0	9.0
Std. Deviation	0.77	0.82	0.78	0.72	0.80	0.68	0.72	0.84	0.71	0.75	0.69	0.71
% Ca < 10.2	94%	90%	96%	95%	94%	94%	93%	97%	94%	93%	94%	94%



	Jan	Feb	Mar	Apr	May	Jun	Jul	Aug	Sep	Oct	Nov	Dec
# Calcium	132	124	139	142	142	145	147	148	152	151	145	145
# Calcium > 8.4	108	104	114	119	116	123	114	118	120	126	114	116
Pop. Mean	9.1	9.1	9.0	9.0	9.0	9.1	9.0	8.9	9.0	9.0	9.0	9.0
Std. Deviation	0.77	0.82	0.78	0.72	0.80	0.68	0.72	0.84	0.71	0.75	0.69	0.71
% Calcium > 8.4	82%	84%	82%	84%	82%	85%	78%	80%	79%	83%	79%	80%

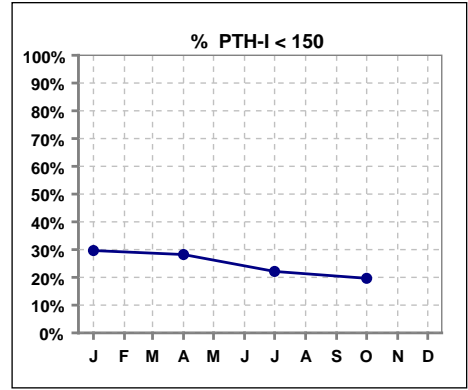


	Jan	Feb	Mar	Apr	May	Jun	Jul	Aug	Sep	Oct	Nov	Dec
# Calcium	132	124	139	142	142	145	147	148	152	151	145	145
# Calcium 8.4 to 10.2	104	100	113	118	112	122	113	116	120	120	114	113
Pop. Mean	9.1	9.1	9.0	9.0	9.0	9.1	9.0	8.9	9.0	9.0	9.0	9.0
Std. Deviation	0.77	0.82	0.78	0.72	0.80	0.68	0.72	0.84	0.71	0.75	0.69	0.71
% Calcium 8.4 to 10.2	79%	81%	81%	83%	79%	84%	77%	78%	79%	79%	79%	78%

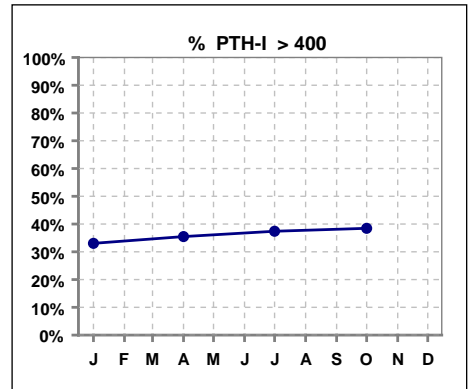


III. OSTEODYSTROPHY - CONT.

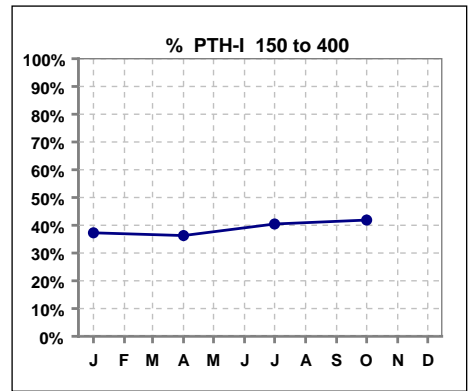
	Jan	Feb	Mar	Apr	May	Jun	Jul	Aug	Sep	Oct	Nov	Dec
# PTH-I	118			124			131			117		
# PTH-I < 150	35			35			29			23		
Pop. Mean	400			399			401			457		
Std. Deviation	405			386			372			503		
% PTH-I < 150	30%			28%			22%			20%		



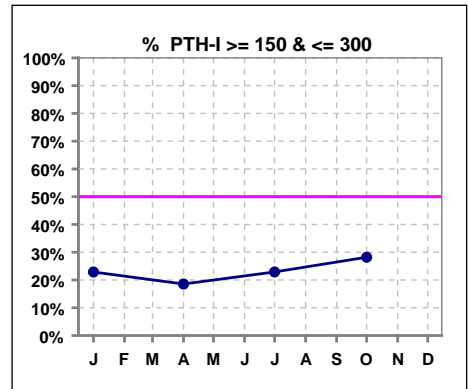
	Jan	Feb	Mar	Apr	May	Jun	Jul	Aug	Sep	Oct	Nov	Dec
# PTH-I	118			124			131			117		
# PTH-I > 400	39			44			49			45		
Pop. Mean	400			399			401			457		
Std. Deviation	405			386			372			503		
% PTH-I > 400	33%			35%			37%			38%		



	Jan	Feb	Mar	Apr	May	Jun	Jul	Aug	Sep	Oct	Nov	Dec
# PTH-I	118			124			131			117		
# PTH-I 150 to 400	44			45			53			49		
Pop. Mean	400			399			401			457		
Std. Deviation	405			386			372			503		
% PTH-I 150 to 400	37%			36%			40%			42%		



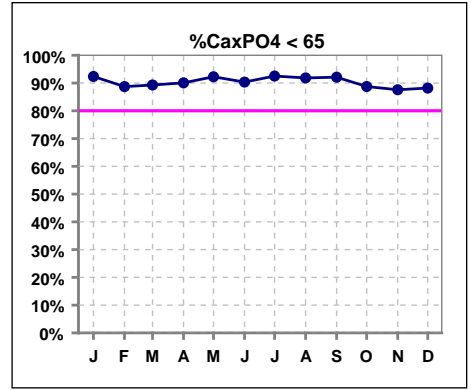
	Jan	Feb	Mar	Apr	May	Jun	Jul	Aug	Sep	Oct	Nov	Dec
# PTH-I	118			124			131			117		
# PTH-I >=150 & <=300	27			23			30			33		
Pop. Mean	400			399			401			457		
Std. Deviation	405			386			372			503		
% PTH-I >=150 & <=300	23%			19%			23%			28%		



Methodology: a) Kt/V, CRCL and nPNa values are 4 month rolling mean of last value for each month, all other report lab results are based on last value of month; b) BP's are average of all values for month.

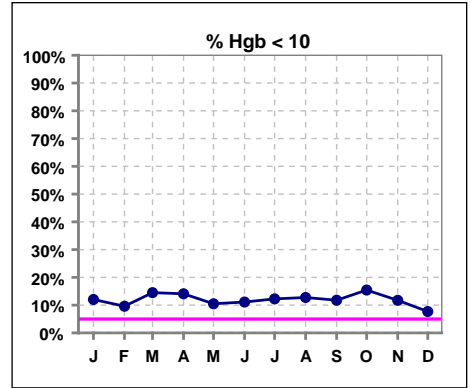
III. OSTEODYSTROPHY - CONT.

	Jan	Feb	Mar	Apr	May	Jun	Jul	Aug	Sep	Oct	Nov	Dec
# Ca x PO4	131	124	140	141	142	145	147	147	152	151	145	144
# Ca x PO4 < 65	121	110	125	127	131	131	136	135	140	134	127	127
Pop. Mean	45.9	46.4	44.8	45.5	45.5	45.5	45.6	43.9	44.4	44.0	46.0	46.3
Std. Deviation	14.4	14.2	14.6	14.8	13.8	14.2	12.9	13.6	13.5	14.5	15.6	15.8
% CaxPO4 < 65	92%	89%	89%	90%	92%	90%	93%	92%	92%	89%	88%	88%

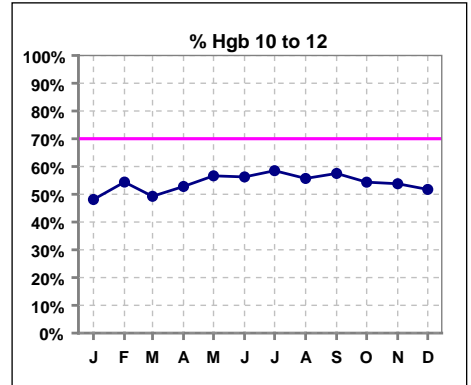


IV. ANEMIA

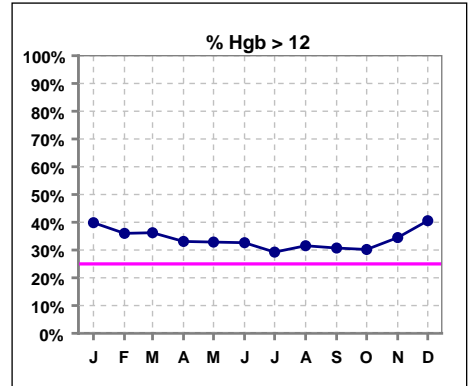
	Jan	Feb	Mar	Apr	May	Jun	Jul	Aug	Sep	Oct	Nov	Dec
# Hgb	133	125	138	142	143	144	147	149	153	149	145	143
# Hgb < 10	16	12	20	20	15	16	18	19	18	23	17	11
# Hgb < 13												
Pop. Mean	11.7	11.7	11.6	11.5	11.5	11.5	11.6	11.5	11.5	11.5	11.6	11.8
Std. Deviation	1.6	1.6	1.5	1.5	1.6	1.7	1.4	1.4	1.3	1.4	1.5	1.4
% Hgb < 10	12%	10%	14%	14%	10%	11%	12%	13%	12%	15%	12%	8%



	Jan	Feb	Mar	Apr	May	Jun	Jul	Aug	Sep	Oct	Nov	Dec
# Hgb	133	125	138	142	143	144	147	149	153	149	145	143
# Hgb 10 to 12	64	68	68	75	81	81	86	83	88	81	78	74
Pop. Mean	11.7	11.7	11.6	11.5	11.5	11.5	11.6	11.5	11.5	11.5	11.6	11.8
Std. Deviation	1.6	1.6	1.5	1.5	1.6	1.7	1.4	1.4	1.3	1.4	1.5	1.4
% Hgb 10 to 12	48%	54%	49%	53%	57%	56%	59%	56%	58%	54%	54%	52%



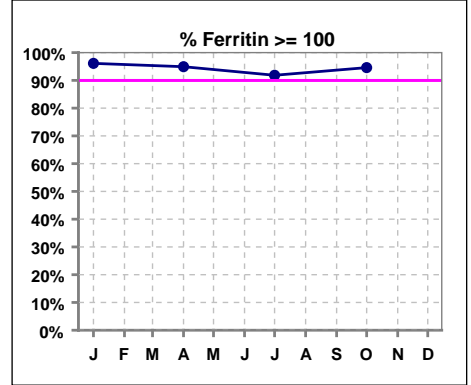
	Jan	Feb	Mar	Apr	May	Jun	Jul	Aug	Sep	Oct	Nov	Dec
# Hgb	133	125	138	142	143	144	147	149	153	149	145	143
# Hgb > 12	53	45	50	47	47	47	43	47	47	45	50	58
# Hgb >= 11												
Pop. Mean	11.7	11.7	11.6	11.5	11.5	11.5	11.6	11.5	11.5	11.5	11.6	11.8
Std. Deviation	1.6	1.6	1.5	1.5	1.6	1.7	1.4	1.4	1.3	1.4	1.5	1.4
% Hgb > 12	40%	36%	36%	33%	33%	33%	29%	32%	31%	30%	34%	41%



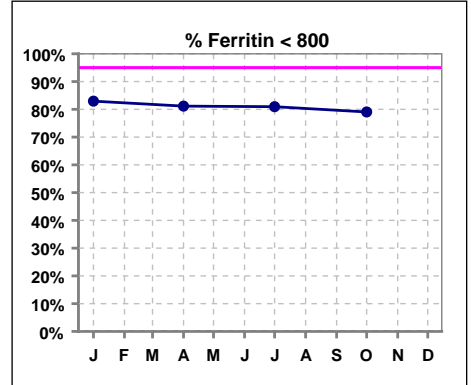
IV. ANEMIA - CONT.

Iron Profile

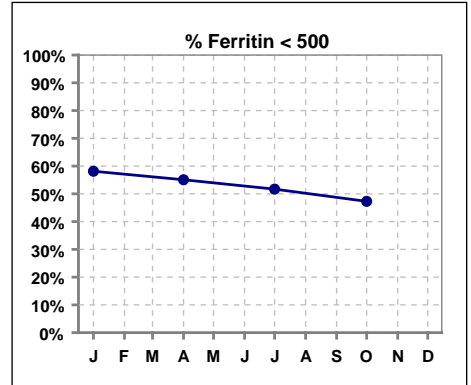
	Jan	Feb	Mar	Apr	May	Jun	Jul	Aug	Sep	Oct	Nov	Dec
# Ferritin	129			138			147			148		
# Ferritin >= 100	124			131			135			140		
Pop. Mean	543			549			524			577		
Std. Deviation	474			405			344			388		
% Ferritin >= 100	96%			95%			92%			95%		



	Jan	Feb	Mar	Apr	May	Jun	Jul	Aug	Sep	Oct	Nov	Dec
# Ferritin	129			138			147			148		
# Ferritin < 800	107			112			119			117		
Pop. Mean	543			549			524			577		
Std. Deviation	474			405			344			388		
% Ferritin < 800	83%			81%			81%			79%		

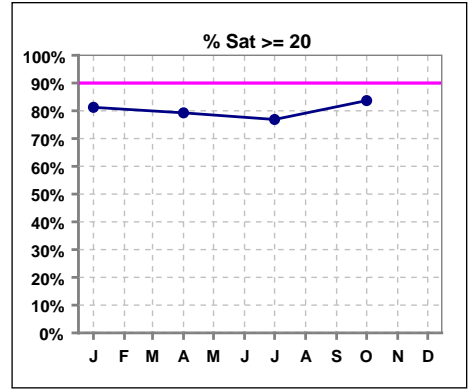


	Jan	Feb	Mar	Apr	May	Jun	Jul	Aug	Sep	Oct	Nov	Dec
# Ferritin	129			138			147			148		
# Ferritin < 500	75			76			76			70		
Pop. Mean	543			549			524			577		
Std. Deviation	474			405			344			388		
% Ferritin < 500	58%			55%			52%			47%		

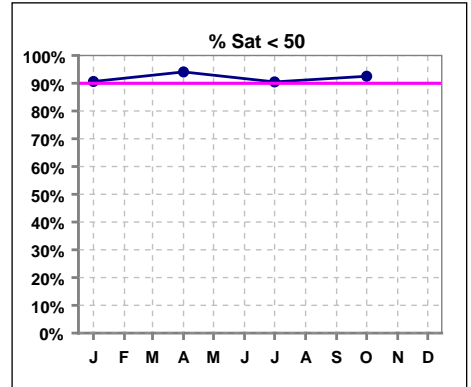


IV. ANEMIA - CONT.

	Jan	Feb	Mar	Apr	May	Jun	Jul	Aug	Sep	Oct	Nov	Dec
# % Sat	128			135			147			147		
# % Sat >= 20	104			107			113			123		
Pop. Mean	30			32			30			31		
Std. Deviation	14			15			15			15		
% Sat% >= 20	81%			79%			77%			84%		

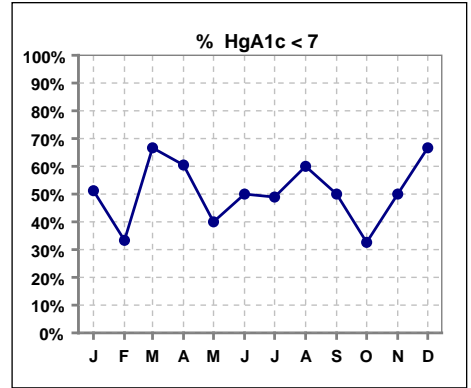


	Jan	Feb	Mar	Apr	May	Jun	Jul	Aug	Sep	Oct	Nov	Dec
# % Sat	128			135			147			147		
# % Sat < 50	116			127			133			136		
Pop. Mean	30			32			30			31		
Std. Deviation	14			15			15			15		
% Sat% < 50	91%			94%			90%			93%		



V. Diabetes

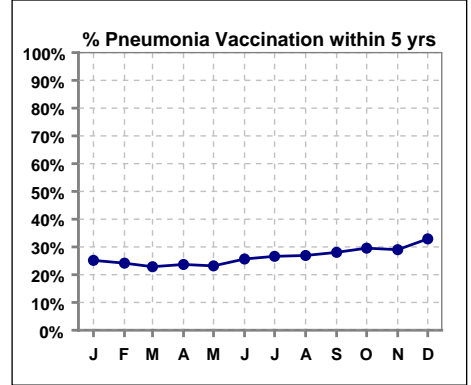
	Jan	Feb	Mar	Apr	May	Jun	Jul	Aug	Sep	Oct	Nov	Dec
# HgA1c	41	6	6	43	5	2	47	5	8	46	4	3
# HgA1c < 7	21	2	4	26	2	1	23	3	4	15	2	2
Pop. Mean	7.1	7.5	6.5	7.0	7.6	6.8	7.3	7.2	6.8	7.8	7.2	7.4
Std. Deviation	1.43	1.90	0.85	0.88	1.55	1.20	1.42	1.56	1.00	1.58	1.63	2.10
% HgA1c < 7	51%	33%	67%	60%	40%	50%	49%	60%	50%	33%	50%	67%



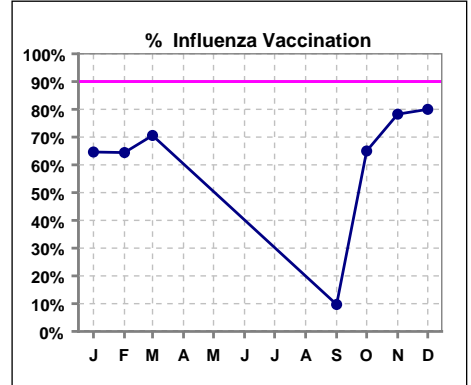
VI. Infection Control

Pneumonia vaccination within the past five years

	Jan	Feb	Mar	Apr	May	Jun	Jul	Aug	Sep	Oct	Nov	Dec
# Patient	147	149	153	152	151	152	154	156	164	159	162	155
# Pneumonia	37	36	35	36	35	39	41	42	46	47	47	51
% Pneumonia	25%	24%	23%	24%	23%	26%	27%	27%	28%	30%	29%	33%



	Jan	Feb	Mar	Apr	May	Jun	Jul	Aug	Sep	Oct	Nov	Dec
# Patient	147	149	153						165	160	161	155
# Influenza	95	96	108						16	104	126	124
% Influenza	65%	64%	71%						10%	65%	78%	80%



Exit Site Infection Rate

	Jan	Feb	Mar	Apr	May	Jun	Jul	Aug	Sep	Oct	Nov	Dec
Current Month	0.26	0.37	0.16	0.17	0.48	0.32	0.24	0.08	0.31	0.15	0.15	0.38
Rolling Year-to-date	0.14	0.16	0.17	0.19	0.23	0.24	0.26	0.25	0.28	0.26	0.28	0.27

Peritonitis Infection Rate

	Jan	Feb	Mar	Apr	May	Jun	Jul	Aug	Sep	Oct	Nov	Dec
Current Month	0.51	0.46	0.33	0.50	0.24	0.41	0.24	0.46	0.31	0.15	0.31	0.15
Rolling Year-to-date	0.49	0.50	0.46	0.45	0.45	0.46	0.43	0.39	0.36	0.36	0.36	0.33