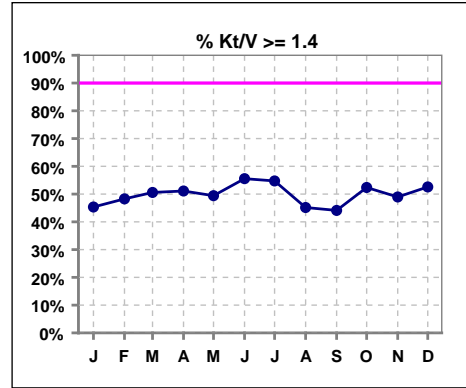


**I. ADEQUACY OF DIALYSIS**

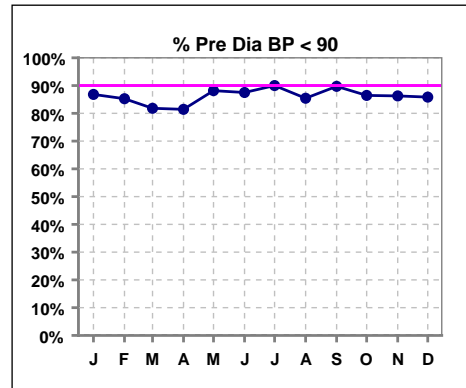
	Jan	Feb	Mar	Apr	May	Jun	Jul	Aug	Sep	Oct	Nov	Dec
# Kt/V	86	87	85	90	87	90	95	93	102	84	96	97
# Kt/V >= 1.4	39	42	43	46	43	50	52	42	45	44	47	51
Pop. Mean	1.39	1.36	1.39	1.40	1.39	1.45	1.45	1.35	1.33	1.41	1.41	1.45
Std. Deviation	0.35	0.38	0.35	0.34	0.36	0.47	0.40	0.38	0.36	0.41	0.41	0.45
Network Mean '04	1.59	1.59	1.59	1.59	1.59	1.59	1.59	1.59	1.59	1.59	1.59	1.59
Natl. Mean '06	1.55	1.55	1.55	1.55	1.55	1.55	1.55	1.55	1.55	1.55	1.55	1.55
<b>% Kt/V &gt;= 1.4</b>	<b>45%</b>	<b>48%</b>	<b>51%</b>	<b>51%</b>	<b>49%</b>	<b>56%</b>	<b>55%</b>	<b>45%</b>	<b>44%</b>	<b>52%</b>	<b>49%</b>	<b>53%</b>
% Kt/V >= 1.2	73%	69%	76%	76%	74%	67%	75%	66%	67%	73%	66%	72%

\*\* As of Apr. '04

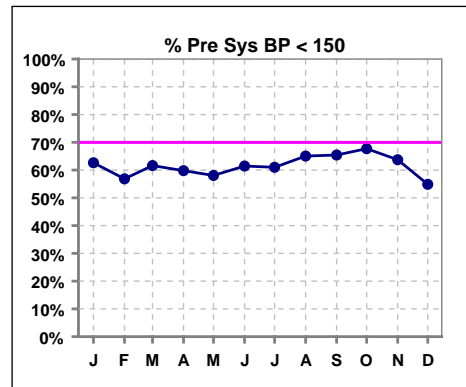


**Blood Pressure Control (Pre)**

	Jan	Feb	Mar	Apr	May	Jun	Jul	Aug	Sep	Oct	Nov	Dec
# Pre Dia BP	91	95	99	97	93	96	100	103	107	96	102	113
# Pre Dia BP < 90	79	81	81	79	82	84	90	88	96	83	88	97
Pop. Mean	75	76	77	77	76	74	73	75	74	74	75	75
Std. Deviation	14.2	12.9	18.2	12.8	12.4	12.5	12.1	13.0	12.4	13.9	14.1	15.0
Network Mean												
Natl. Mean												
<b>% Pre Dia BP &lt; 90</b>	<b>87%</b>	<b>85%</b>	<b>82%</b>	<b>81%</b>	<b>88%</b>	<b>88%</b>	<b>90%</b>	<b>85%</b>	<b>90%</b>	<b>86%</b>	<b>86%</b>	<b>86%</b>



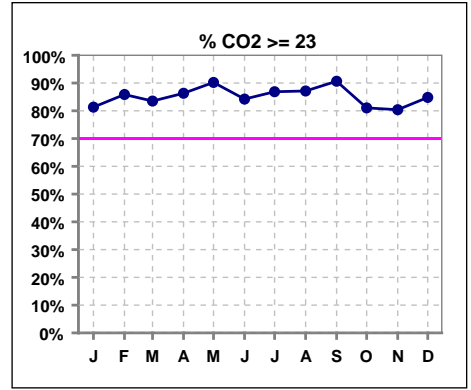
	Jan	Feb	Mar	Apr	May	Jun	Jul	Aug	Sep	Oct	Nov	Dec
# Pre Sys BP	91	95	99	97	93	96	100	103	107	96	102	113
# Pre Sys BP < 150	57	54	61	58	54	59	61	67	70	65	65	62
Pop. Mean	143	143	144	145	143	144	143	145	141	142	142	145
Std. Deviation	21.8	22.7	21.7	21.2	22.2	20.1	21.5	22.3	20.9	24.0	21.6	22.7
Network Mean												
Natl. Mean												
<b>% Pre Sys BP &lt; 150</b>	<b>63%</b>	<b>57%</b>	<b>62%</b>	<b>60%</b>	<b>58%</b>	<b>61%</b>	<b>61%</b>	<b>65%</b>	<b>65%</b>	<b>68%</b>	<b>64%</b>	<b>55%</b>



\*Methodology: a) Monthly values based on patient's monthly average of all values present for the month; b) Quarter values are average of all values for quarter; c) Values not averaged use last value present at months end.

**I. ADEQUACY OF DIALYSIS - CONT.**

	Jan	Feb	Mar	Apr	May	Jun	Jul	Aug	Sep	Oct	Nov	Dec
# CO2	91	92	97	95	92	95	99	101	107	95	102	112
# CO2 >= 23	74	79	81	82	83	80	86	88	97	77	82	95
Pop. Mean	25	26	26	25	26	26	25	26	26	26	26	26
Std. Deviation	3.19	3.46	3.26	2.86	2.93	3.03	3.15	3.30	2.62	3.43	3.69	3.56
Network Mean												
Natl. Mean												
<b>% CO2 &gt;= 23</b>	<b>81%</b>	<b>86%</b>	<b>84%</b>	<b>86%</b>	<b>90%</b>	<b>84%</b>	<b>87%</b>	<b>87%</b>	<b>91%</b>	<b>81%</b>	<b>80%</b>	<b>85%</b>

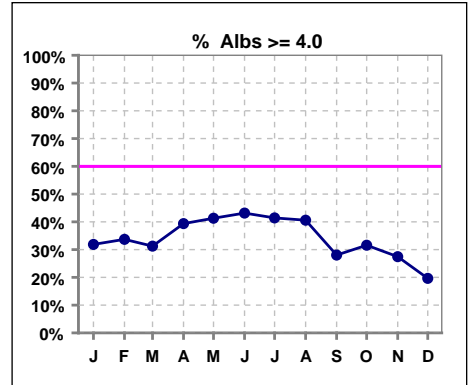


\*Methodology: a) Monthly values based on patient's monthly average of all values present for the month; b) Quarter values are average of all values for quarter; c) Values not averaged use last value present at months end.

\*Albumin values use BCG method - as of July 2001

**II. NUTRITION**

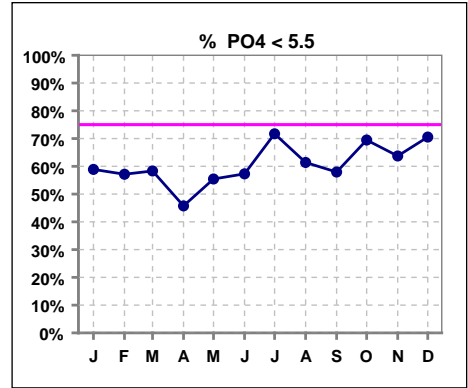
	Jan	Feb	Mar	Apr	May	Jun	Jul	Aug	Sep	Oct	Nov	Dec
# Albumin	91	92	96	94	92	95	99	101	107	95	102	112
# Albumin >= 4.0	29	31	30	37	38	41	41	41	30	30	28	22
Pop. Mean	3.7	3.7	3.7	3.7	3.8	3.8	3.7	3.8	3.7	3.7	3.7	3.6
Std. Deviation	0.57	0.50	0.54	0.51	0.45	0.49	0.53	0.52	0.50	0.48	0.51	0.45
Network Mean	3.4	3.4	3.4	3.4	3.4	3.4	3.4	3.4	3.4	3.4	3.4	3.4
Natl. Mean '06	3.8	3.8	3.8	3.8	3.8	3.8	3.8	3.8	3.8	3.8	3.8	3.8
% Alb >= 3.5	73%	71%	70%	73%	83%	81%	76%	77%	75%	72%	66%	68%
% Alb >= 3.0	89%	91%	93%	95%	97%	95%	92%	94%	91%	95%	93%	92%
<b>% Alb &gt;= 4.0</b>	<b>32%</b>	<b>34%</b>	<b>31%</b>	<b>39%</b>	<b>41%</b>	<b>43%</b>	<b>41%</b>	<b>41%</b>	<b>28%</b>	<b>32%</b>	<b>27%</b>	<b>20%</b>
Netwk%>=3.5 '06	82%	82%	82%	82%	82%	82%	82%	82%	82%	82%	82%	82%
Netwk%>=4.0 '06	34%	34%	34%	34%	34%	34%	34%	34%	34%	34%	34%	34%
Natl % >= 3.5 '06	81%	81%	81%	81%	81%	81%	81%	81%	81%	81%	81%	81%
Natl. % >= 4.0 '06	34%	34%	34%	34%	34%	34%	34%	34%	34%	34%	34%	34%



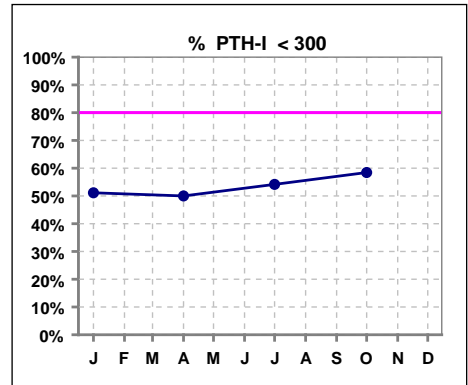
\*Methodology: a) Monthly values based on patient's monthly average of all values present for the month; b) Quarter values are average of all values for quarter; c) Values not averaged use last value present at months end.

**III. OSTEODYSTROPHY**

	Jan	Feb	Mar	Apr	May	Jun	Jul	Aug	Sep	Oct	Nov	Dec
# PO4	90	91	96	94	92	96	99	101	107	95	102	112
# PO4 < 5.5	53	52	56	43	51	55	71	62	62	66	65	79
Pop. Mean	5.1	5.2	5.3	5.6	5.7	5.4	5.0	5.2	5.4	5.0	4.9	4.8
Std. Deviation	1.65	1.43	1.54	1.79	1.90	1.68	1.19	1.48	1.64	1.63	1.48	1.36
Network Mean												
Natl. Mean '06	5	5	5	5	5	5	5	5	5	5	5	5
<b>% PO4 &lt; 5.5</b>	<b>59%</b>	<b>57%</b>	<b>58%</b>	<b>46%</b>	<b>55%</b>	<b>57%</b>	<b>72%</b>	<b>61%</b>	<b>58%</b>	<b>69%</b>	<b>64%</b>	<b>71%</b>



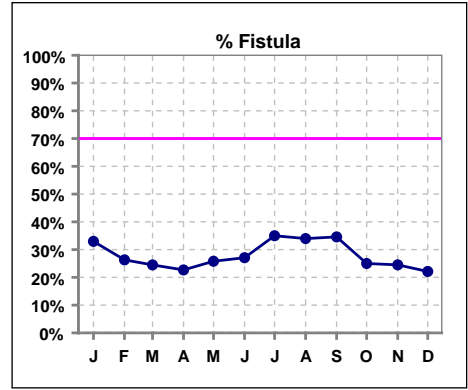
	Jan	Feb	Mar	Apr	May	Jun	Jul	Aug	Sep	Oct	Nov	Dec
# PTH-I	88			84			96			77		
# PTH-I < 300	45			42			52			45		
Pop. Mean	494			420			355			399		
Std. Deviation	514			565			330			422		
Network Mean												
Natl. Mean												
<b>% PTH-I &lt; 300</b>	<b>51%</b>			<b>50%</b>			<b>54%</b>			<b>58%</b>		



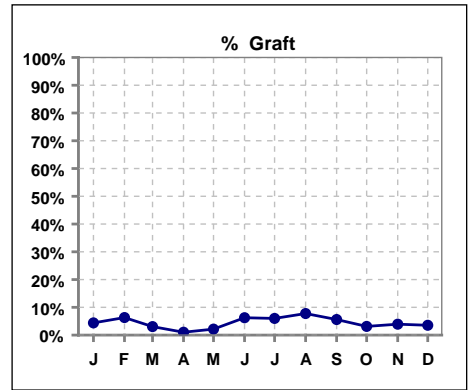
\*Methodology: a) Monthly values based on patient's monthly average of all values present for the month; b) Quarter values are average of all values for quarter; c) Values not averaged use last value present at months end.

**IV. ACCESS**

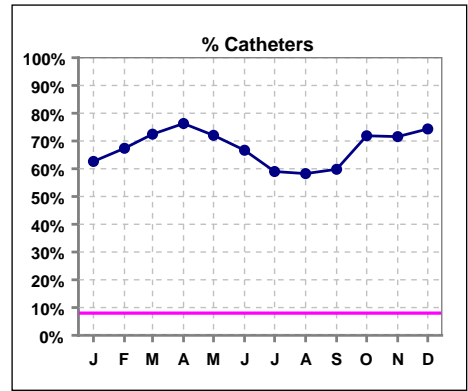
	Jan	Feb	Mar	Apr	May	Jun	Jul	Aug	Sep	Oct	Nov	Dec
# Access	91	95	98	97	93	96	100	103	107	96	102	113
# Fistula	30	25	24	22	24	26	35	35	37	24	25	25
Network % '06	61%	61%	61%	61%	61%	61%	61%	61%	61%	61%	61%	61%
Natl. % '06	45%	45%	45%	45%	45%	45%	45%	45%	45%	45%	45%	45%
% Fistula	33%	26%	24%	23%	26%	27%	35%	34%	35%	25%	25%	22%



	Jan	Feb	Mar	Apr	May	Jun	Jul	Aug	Sep	Oct	Nov	Dec
# Access	91	95	98	97	93	96	100	103	107	96	102	113
# Graft	4	6	3	1	2	6	6	8	6	3	4	4
Network %												
Natl. %												
% Graft	4%	6%	3%	1%	2%	6%	6%	8%	6%	3%	4%	4%



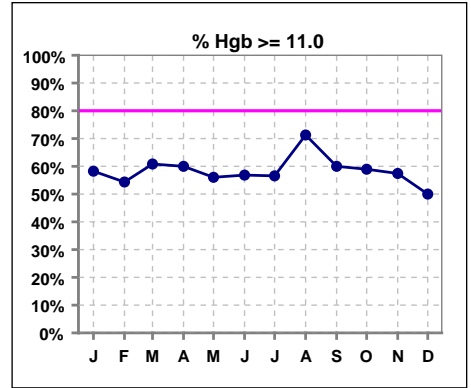
	Jan	Feb	Mar	Apr	May	Jun	Jul	Aug	Sep	Oct	Nov	Dec
# Access	91	95	98	97	93	96	100	103	107	96	102	113
# Catheters	57	64	71	74	67	64	59	60	64	69	73	84
Network % '06	22%	22%	22%	22%	22%	22%	22%	22%	22%	22%	22%	22%
Natl. % '06	29%	29%	29%	29%	29%	29%	29%	29%	29%	29%	29%	29%
% Catheters	63%	67%	72%	76%	72%	67%	59%	58%	60%	72%	72%	74%



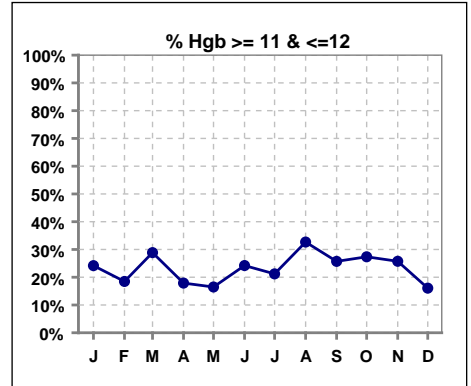
\*Methodology: a) Monthly values based on patient's monthly average of all values present for the month; b) Quarter values are average of all values for quarter; c) Values not averaged use last value present at months end.

**V. ANEMIA**

	Jan	Feb	Mar	Apr	May	Jun	Jul	Aug	Sep	Oct	Nov	Dec
# Hgb	91	92	97	95	91	95	99	101	105	95	101	112
# Hgb >= 11.0	53	50	59	57	51	54	56	72	63	56	58	56
Pop. Mean	11.3	11.3	11.3	11.4	11.6	11.4	11.4	11.7	11.3	11.4	11.3	11.0
Std. Deviation	1.6	1.6	1.7	1.8	1.7	1.7	1.6	1.4	1.7	1.7	1.6	1.8
Network Mean	11.8	11.8	11.8	11.8	11.8	11.8	11.8	11.8	11.8	11.8	11.8	11.8
Natl. Mean '06	12	12	12	12	12	12	12	12	12	12	12	12
<b>% Hgb &gt;= 11.0</b>	<b>58%</b>	<b>54%</b>	<b>61%</b>	<b>60%</b>	<b>56%</b>	<b>57%</b>	<b>57%</b>	<b>71%</b>	<b>60%</b>	<b>59%</b>	<b>57%</b>	<b>50%</b>
% Hgb <= 11.0	43%	48%	41%	40%	45%	44%	44%	31%	41%	41%	44%	50%
% Netwk >= 11 '06	87%	87%	87%	87%	87%	87%	87%	87%	87%	87%	87%	87%
% Natl. >= 11 '06	84%	84%	84%	84%	84%	84%	84%	84%	84%	84%	84%	84%



	Jan	Feb	Mar	Apr	May	Jun	Jul	Aug	Sep	Oct	Nov	Dec
# Hgb	91	92	97	95	91	95	99	101	105	95	101	112
# Hgb >=11 & <=12	22	17	28	17	15	23	21	33	27	26	26	18
Pop. Mean	11.3	11.3	11.3	11.4	11.6	11.4	11.4	11.7	11.3	11.4	11.3	11.0
Std. Deviation	1.6	1.6	1.7	1.8	1.7	1.7	1.6	1.4	1.7	1.7	1.6	1.8
Network Mean	11.8	11.8	11.8	11.8	11.8	11.8	11.8	11.8	11.8	11.8	11.8	11.8
Natl. Mean '06	12	12	12	12	12	12	12	12	12	12	12	12
<b>% Hgb &gt;=11 &amp; &lt;=12</b>	<b>24%</b>	<b>18%</b>	<b>29%</b>	<b>18%</b>	<b>16%</b>	<b>24%</b>	<b>21%</b>	<b>33%</b>	<b>26%</b>	<b>27%</b>	<b>26%</b>	<b>16%</b>



\*Methodology: a) Monthly values based on patient's monthly average of all values present for the month; b) Quarter values are average of all values for quarter; c) Values not averaged use last value present at months end.