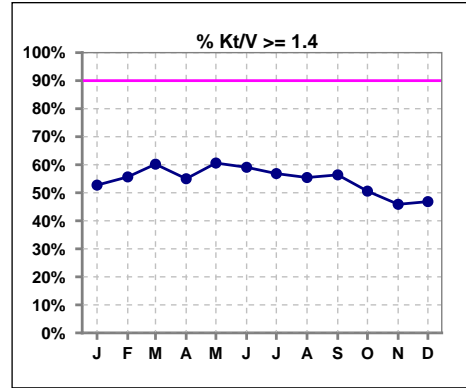
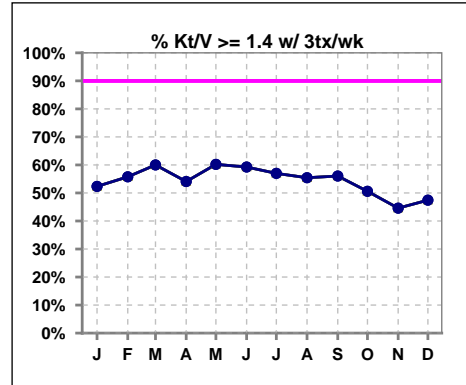


I. ADEQUACY OF DIALYSIS

	Jan	Feb	Mar	Apr	May	Jun	Jul	Aug	Sep	Oct	Nov	Dec
# Kt/V	110	106	103	100	99	110	95	92	94	87	85	79
# Kt/V >= 1.4	58	59	62	55	60	65	54	51	53	44	39	37
Pop. Mean	1.42	1.41	1.48	1.42	1.47	1.43	1.47	1.48	1.47	1.46	1.36	1.40
Std. Deviation	0.41	0.38	0.53	0.33	0.38	0.35	0.41	0.54	0.40	0.53	0.32	0.43
% Kt/V >= 1.4	53%	56%	60%	55%	61%	59%	57%	55%	56%	51%	46%	47%
% Kt/V >= 1.2	72%	77%	77%	75%	80%	75%	76%	78%	80%	71%	71%	73%

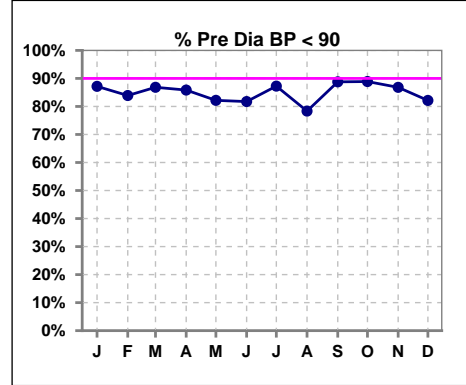


	Jan	Feb	Mar	Apr	May	Jun	Jul	Aug	Sep	Oct	Nov	Dec
# Kt/V w/ 3tx/wk	107	104	100	98	98	108	93	92	91	85	83	78
# Kt/V >= 1.4 w/ 3tx/wk	56	58	60	53	59	64	53	51	51	43	37	37
Pop. Mean	1.41	1.41	1.47	1.42	1.47	1.43	1.46	1.48	1.47	1.46	1.36	1.40
Std. Deviation	0.40	0.35	0.51	0.33	0.38	0.36	0.37	0.54	0.40	0.53	0.32	0.43
% Kt/V >= 1.4 w/ 3tx/wk	52%	56%	60%	54%	60%	59%	57%	55%	56%	51%	45%	47%

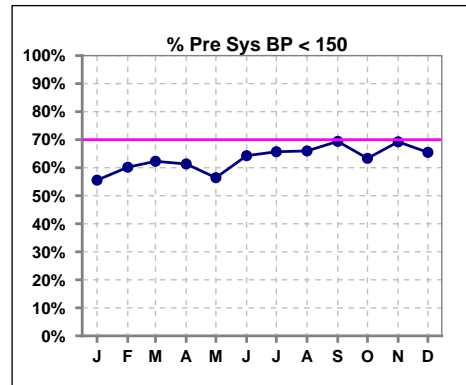


Blood Pressure Control (Pre)

	Jan	Feb	Mar	Apr	May	Jun	Jul	Aug	Sep	Oct	Nov	Dec
# Pre Dia BP	117	118	114	106	101	126	102	97	98	90	91	84
# Pre Dia BP < 90	102	99	99	91	83	103	89	76	87	80	79	69
Pop. Mean	76	76	74	75	77	76	74	75	74	75	74	75
Std. Deviation	13.5	13.2	13.7	14.9	13.2	13.8	12.9	14.1	13.8	14.2	14.5	14.1
% Pre Dia BP < 90	87%	84%	87%	86%	82%	82%	87%	78%	89%	89%	87%	82%



	Jan	Feb	Mar	Apr	May	Jun	Jul	Aug	Sep	Oct	Nov	Dec
# Pre Sys BP	117	118	114	106	101	126	102	97	98	90	91	84
# Pre Sys BP < 150	65	71	71	65	57	81	67	64	68	57	63	55
Pop. Mean	144	144	142	144	147	145	142	141	138	140	140	140
Std. Deviation	20.6	20.1	22.6	24.5	22.3	21.0	20.8	22.3	22.2	25.1	23.0	20.6
% Pre Sys BP < 150	56%	60%	62%	61%	56%	64%	66%	66%	69%	63%	69%	65%

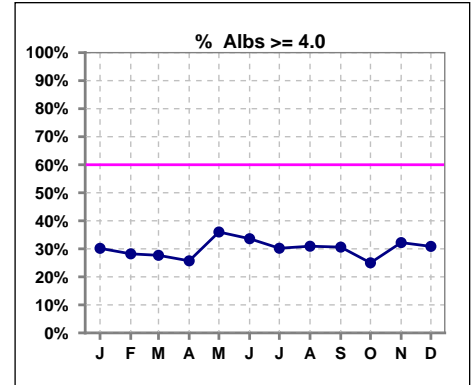


Methodology: a) All labs for 'Adequacy of Dialysis', 'Nutrition', 'Osteodystrophy', 'Anemia' and 'Diabetes' based on last value of month; b) BP's and #L processed are average of all values for month; c) Access data takes last access of month; d) Values for SGA and 'Infection Control' use most recent result.

*Albumin values use BCG method - as of July 2001

II. NUTRITION

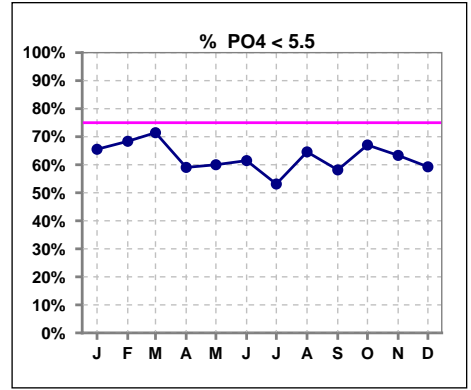
	Jan	Feb	Mar	Apr	May	Jun	Jul	Aug	Sep	Oct	Nov	Dec
# Albumin	116	117	112	105	100	122	96	97	98	88	90	81
# Albumin >= 4.0	35	33	31	27	36	41	29	30	30	22	29	25
Pop. Mean	3.7	3.7	3.7	3.6	3.7	3.7	3.7	3.7	3.8	3.7	3.7	3.7
Std. Deviation	0.45	0.43	0.46	0.51	0.44	0.45	0.45	0.52	0.47	0.49	0.54	0.45
% Alb >= 3.5	72%	77%	70%	74%	76%	71%	69%	68%	82%	75%	76%	79%
% Alb >= 3.0	95%	96%	95%	90%	95%	93%	95%	92%	94%	91%	92%	95%
% Alb >= 4.0	30%	28%	28%	26%	36%	34%	30%	31%	31%	25%	32%	31%



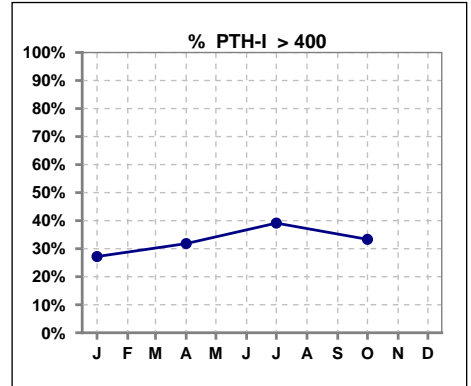
Methodology: a) All labs for 'Adequacy of Dialysis', 'Nutrition', 'Osteodystrophy', 'Anemia' and 'Diabetes' based on last value of month; b) BP's and #L processed are average of all values for month; c) Access data takes last access of month; d) Values for SGA and 'Infection Control' use most recent result.

III. OSTEODYSTROPHY

	Jan	Feb	Mar	Apr	May	Jun	Jul	Aug	Sep	Oct	Nov	Dec
# PO4	116	117	112	105	100	122	96	96	98	88	90	81
# PO4 < 5.5	76	80	80	62	60	75	51	62	57	59	57	48
Pop. Mean	4.9	5.1	4.8	5.1	5.0	5.1	5.3	5.3	5.3	5.1	5.2	5.4
Std. Deviation	1.50	1.59	1.64	1.51	1.55	1.41	1.66	1.71	1.79	1.40	1.37	1.55
% PO4 < 5.5	66%	68%	71%	59%	60%	61%	53%	65%	58%	67%	63%	59%

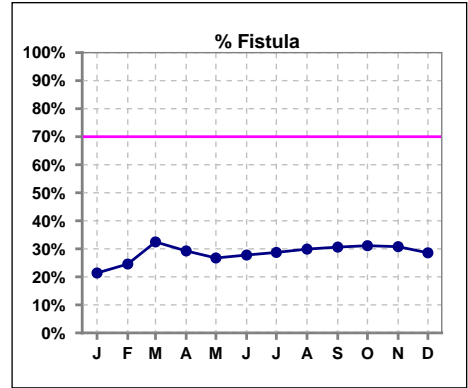


	Jan	Feb	Mar	Apr	May	Jun	Jul	Aug	Sep	Oct	Nov	Dec
# PTH-I	114			88			92			72		
# PTH-I > 400	31			28			36			24		
Pop. Mean	348			407			439			399		
Std. Deviation	327			424			462			371		
% PTH-I > 400	27%			32%			39%			33%		

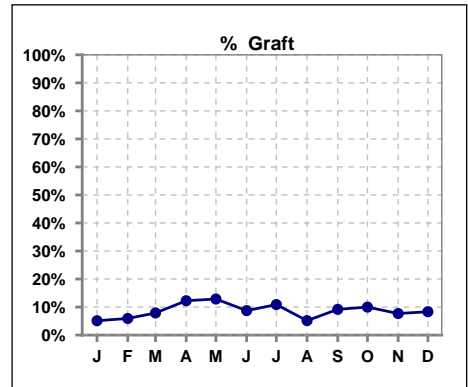


IV. ACCESS

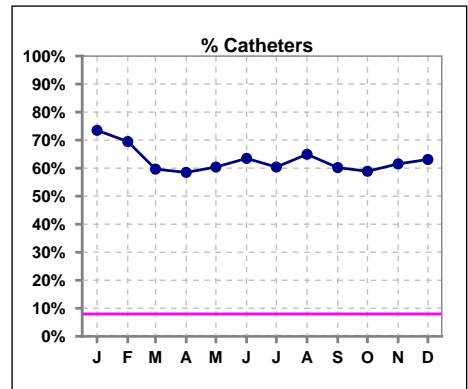
	Jan	Feb	Mar	Apr	May	Jun	Jul	Aug	Sep	Oct	Nov	Dec
# Access	117	118	114	106	101	126	101	97	98	90	91	84
# Fistula	25	29	37	31	27	35	29	29	30	28	28	24
% Fistula	21%	25%	32%	29%	27%	28%	29%	30%	31%	31%	31%	29%



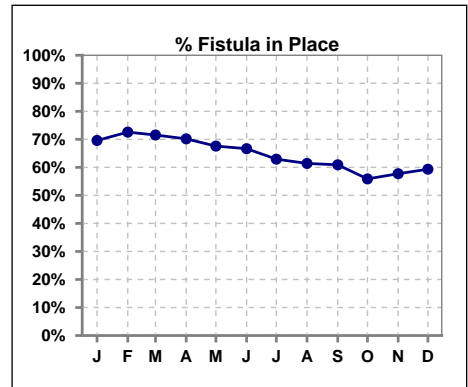
	Jan	Feb	Mar	Apr	May	Jun	Jul	Aug	Sep	Oct	Nov	Dec
# Access	117	118	114	106	101	126	101	97	98	90	91	84
# Graft	6	7	9	13	13	11	11	5	9	9	7	7
% Graft	5%	6%	8%	12%	13%	9%	11%	5%	9%	10%	8%	8%



	Jan	Feb	Mar	Apr	May	Jun	Jul	Aug	Sep	Oct	Nov	Dec
# Access	117	118	114	106	101	126	101	97	98	90	91	84
# Catheters	86	82	68	62	61	80	61	63	59	53	56	53
% Catheters	74%	69%	60%	58%	60%	63%	60%	65%	60%	59%	62%	63%

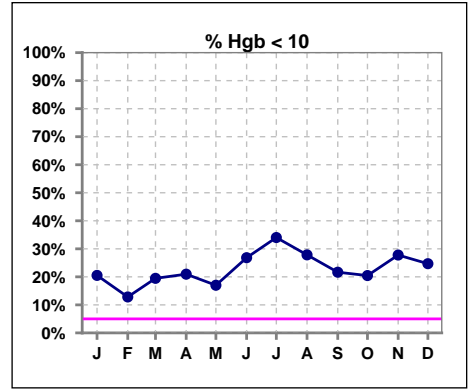


	Jan	Feb	Mar	Apr	May	Jun	Jul	Aug	Sep	Oct	Nov	Dec
# Patient	125	124	123	114	108	132	116	114	110	102	97	91
# Fistula in Place	87	90	88	80	73	88	73	70	67	57	56	54
% Fistula in Place	70%	73%	72%	70%	68%	67%	63%	61%	61%	56%	58%	59%

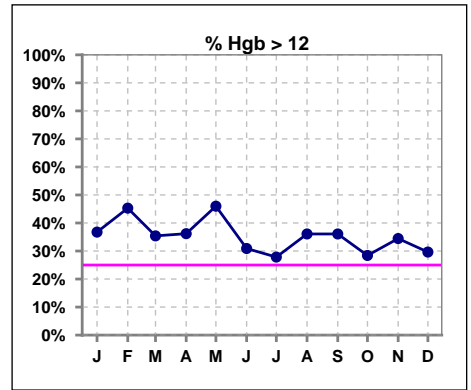


V. ANEMIA

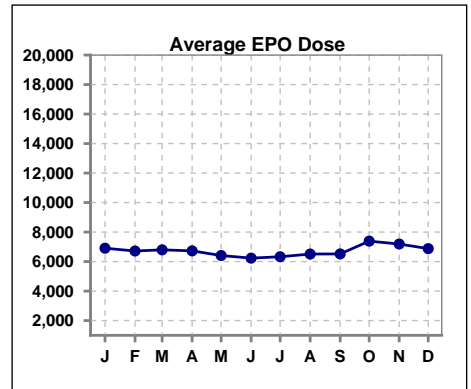
	Jan	Feb	Mar	Apr	May	Jun	Jul	Aug	Sep	Oct	Nov	Dec
# Hgb	117	117	113	105	100	123	97	97	97	88	90	81
# Hgb < 10	24	15	22	22	17	33	33	27	21	18	25	20
Pop. Mean	11.4	11.8	11.4	11.5	11.6	11.2	10.9	11.2	11.5	11.2	11.2	11.1
Std. Deviation	1.7	1.6	1.5	1.6	1.6	1.7	1.7	1.7	1.7	1.5	1.8	1.8
% Hgb < 10	21%	13%	19%	21%	17%	27%	34%	28%	22%	20%	28%	25%



	Jan	Feb	Mar	Apr	May	Jun	Jul	Aug	Sep	Oct	Nov	Dec
# Hgb	117	117	113	105	100	123	97	97	97	88	90	81
# Hgb > 12	43	53	40	38	46	38	27	35	35	25	31	24
Pop. Mean	11.4	11.8	11.4	11.5	11.6	11.2	10.9	11.2	11.5	11.2	11.2	11.1
Std. Deviation	1.7	1.6	1.5	1.6	1.6	1.7	1.7	1.7	1.7	1.5	1.8	1.8
% Hgb > 12	37%	45%	35%	36%	46%	31%	28%	36%	36%	28%	34%	30%



	Jan	Feb	Mar	Apr	May	Jun	Jul	Aug	Sep	Oct	Nov	Dec
# Average EPO Dose	6906	6716	6796	6725	6410	6233	6327	6508	6518	7386	7190	6877



Methodology: a) All labs for 'Adequacy of Dialysis', 'Nutrition', 'Osteodystrophy', 'Anemia' and 'Diabetes' based on last value of month; b) BP's and #L processed are average of all values for month; c) Access data takes last access of month; d) Values for SGA and 'Infection Control' use most recent result.