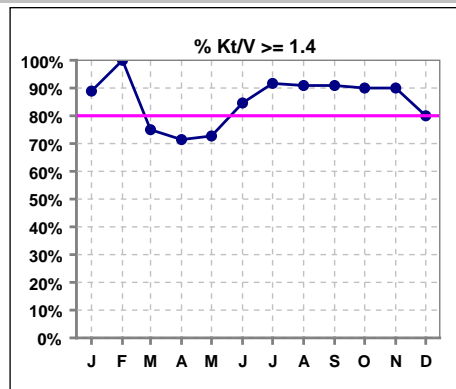


I. ADEQUACY OF DIALYSIS

	Jan	Feb	Mar	Apr	May	Jun	Jul	Aug	Sep	Oct	Nov	Dec
# Kt/V	9	8	8	7	11	13	12	11	11	10	10	10
# Kt/V >= 1.4	8	8	6	5	8	11	11	10	10	9	9	8
Pop. Mean	1.67	1.89	1.70	2.10	1.75	1.75	1.93	2.16	2.26	1.90	1.93	1.82
Std. Deviation	0.27	0.48	0.63	1.16	0.68	0.60	0.96	1.39	1.36	0.42	0.51	0.60
Network Mean	1.59	1.59	1.59	1.59	1.59	1.59	1.59	1.59	1.59	1.59	1.59	1.59
Natl. Mean '06	1.55	1.55	1.55	1.55	1.55	1.55	1.55	1.55	1.55	1.55	1.55	1.55
% Kt/V >= 1.4	89%	100%	75%	71%	73%	85%	92%	91%	91%	90%	90%	80%
% Kt/V >= 1.2	89%	100%	88%	86%	82%	92%	92%	100%	91%	100%	100%	100%
Network >= 1.2 '06	89%	89%	89%	89%	89%	89%	89%	89%	89%	89%	89%	89%
Natl. % > 1.2 '06	90%	90%	90%	90%	90%	90%	90%	90%	90%	90%	90%	90%

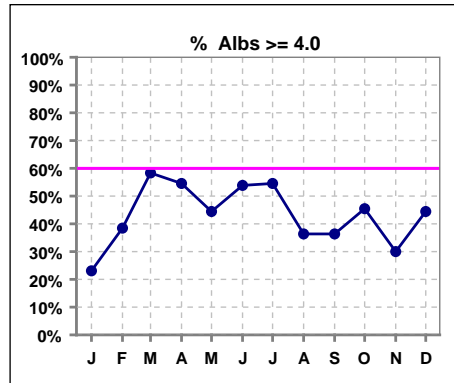


*Methodology: a) Monthly values based on patient's monthly average of all values present for the month; b) Quarter values are average of all values for quarter; c) Values not averaged use last value present at months end.

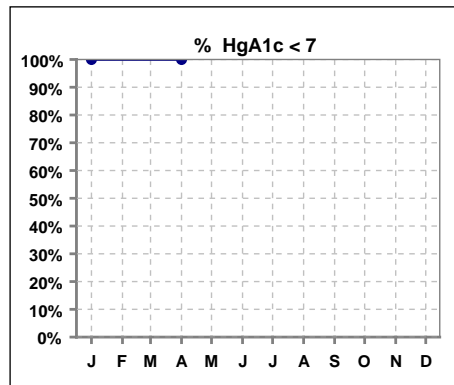
*Albumin values use BCG method - as of July 2001

II. NUTRITION

	Jan	Feb	Mar	Apr	May	Jun	Jul	Aug	Sep	Oct	Nov	Dec
# Albumin	13	13	12	11	9	13	11	11	11	11	10	9
# Albumin >= 4.0				6	4	7	6	4	4	5	3	4
# Albumin >= 3.5	12	12	10									
Pop. Mean	3.8	3.8	3.9	4.0	4.0	4.0	4.0	3.9	3.8	3.9	3.9	4.1
Std. Deviation	0.28	0.35	0.37	0.28	0.35	0.25	0.27	0.28	0.27	0.33	0.31	0.29
Network Mean	3.4	3.4	3.4	3.4	3.4	3.4	3.4	3.4	3.4	3.4	3.4	3.4
Natl. Mean	3.8	3.8	3.8	3.8	3.8	3.8	3.8	3.8	3.8	3.8	3.8	3.8
% Alb >= 3.5	92%	92%	83%	100%	100%	100%	100%	100%	91%	91%	100%	100%
% Alb >= 3.0	100%	100%	100%	100%	100%	100%	100%	100%	100%	100%	100%	100%
% Alb >= 4.0	23%	38%	58%	55%	44%	54%	55%	36%	36%	45%	30%	44%
Netwk%>=3.5 '06	82%	82%	82%	82%	82%	82%	82%	82%	82%	82%	82%	82%
Netwk%>=4.0 '06	34%	34%	34%	34%	34%	34%	34%	34%	34%	34%	34%	34%
Natl. % >= 3.5 '06	81%	81%	81%	81%	81%	81%	81%	81%	81%	81%	81%	81%
Natl. % >= 4.0 '06	34%	34%	34%	34%	34%	34%	34%	34%	34%	34%	34%	34%



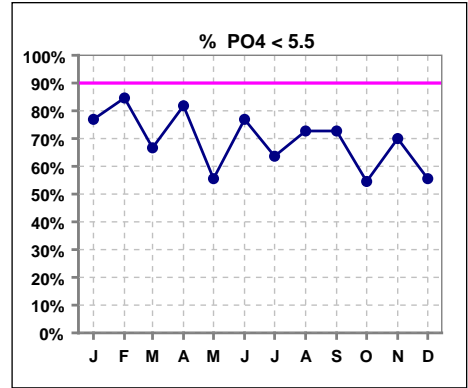
	Jan	Feb	Mar	Apr	May	Jun	Jul	Aug	Sep	Oct	Nov	Dec
# HgA1c	1			1								
# HgA1c < 7	1			1								
Pop. Mean	6.7			6.1								
Std. Deviation												
Network Mean												
Natl. Mean												
% HgA1c < 7	100%			100%								



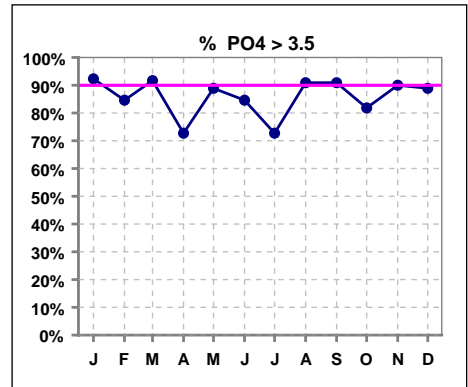
*Methodology: a) Monthly values based on patient's monthly average of all values present for the month; b) Quarter values are average of all values for quarter; c) Values not averaged use last value present at months end.

III. OSTEODYSTROPHY

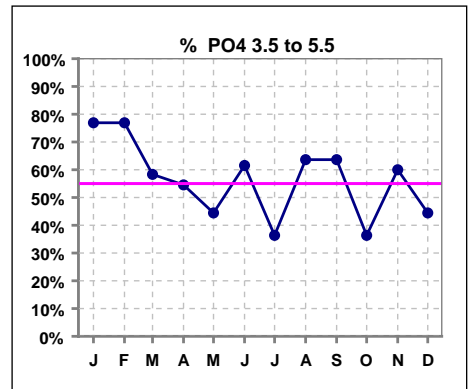
	Jan	Feb	Mar	Apr	May	Jun	Jul	Aug	Sep	Oct	Nov	Dec
# PO4	13	13	12	11	9	13	11	11	11	11	10	9
# PO4 < 5.5	10	11	8	9	5	10	7	8	8	6	7	5
Pop. Mean	4.7	4.7	4.8	4.4	5.1	4.4	4.6	4.7	4.8	5.1	5.0	5.5
Std. Deviation	0.87	0.84	0.91	1.06	1.43	1.27	1.49	1.14	1.10	1.38	1.33	1.72
Network Mean												
Natl. Mean '06	5	5	5	5	5	5	5	5	5	5	5	5
% PO4 < 5.5	77%	85%	67%	82%	56%	77%	64%	73%	73%	55%	70%	56%



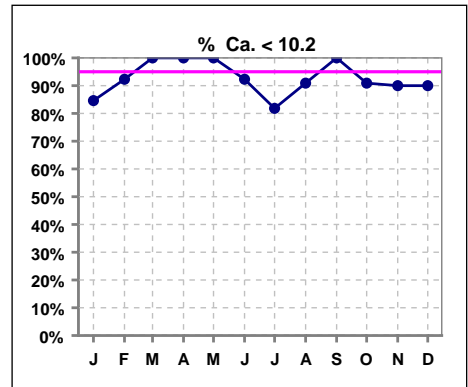
	Jan	Feb	Mar	Apr	May	Jun	Jul	Aug	Sep	Oct	Nov	Dec
# PO4	13	13	12	11	9	13	11	11	11	11	10	9
# PO4 > 3.5	12	11	11	8	8	11	8	10	10	9	9	8
Pop. Mean	4.7	4.7	4.8	4.4	5.1	4.4	4.6	4.7	4.8	5.1	5.0	5.5
Std. Deviation	0.87	0.84	0.91	1.06	1.43	1.27	1.49	1.14	1.10	1.38	1.33	1.72
Network Mean												
Natl. Mean '06	5	5	5	5	5	5	5	5	5	5	5	5
% PO4 > 3.5	92%	85%	92%	73%	89%	85%	73%	91%	91%	82%	90%	89%



	Jan	Feb	Mar	Apr	May	Jun	Jul	Aug	Sep	Oct	Nov	Dec
# PO4	13	13	12	11	9	13	11	11	11	11	10	9
# PO4 3.5 to 5.5	10	10	7	6	4	8	4	7	7	4	6	4
Pop. Mean	4.7	4.7	4.8	4.4	5.1	4.4	4.6	4.7	4.8	5.1	5.0	5.5
Std. Deviation	0.87	0.84	0.91	1.06	1.43	1.27	1.49	1.14	1.10	1.38	1.33	1.72
Network Mean												
Natl. Mean '06	5	5	5	5	5	5	5	5	5	5	5	5
% PO4 3.5 to 5.5	77%	77%	58%	55%	44%	62%	36%	64%	64%	36%	60%	44%



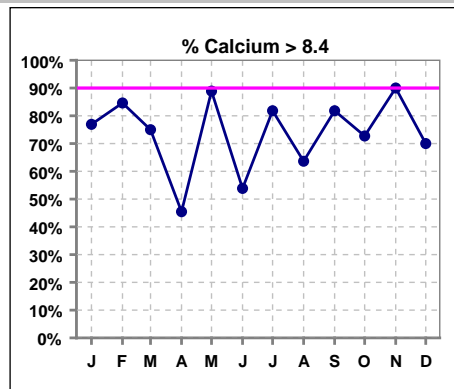
	Jan	Feb	Mar	Apr	May	Jun	Jul	Aug	Sep	Oct	Nov	Dec
# Calcium	13	13	12	11	9	13	11	11	11	11	10	10
# Calcium < 10.2	11	12	12	11	9	12	9	10	11	10	9	9
Pop. Mean	9.1	8.9	8.8	8.7	9.1	8.9	9.4	8.8	8.9	9.3	9.3	9.0
Std. Deviation	0.69	0.70	0.69	0.67	0.75	0.96	0.82	1.29	0.53	1.23	0.65	0.84
Network Mean												
Natl. Mean '06	9	9	9	9	9	9	9	9	9	9	9	9
% Ca < 10.2	85%	92%	100%	100%	100%	92%	82%	91%	100%	91%	90%	90%



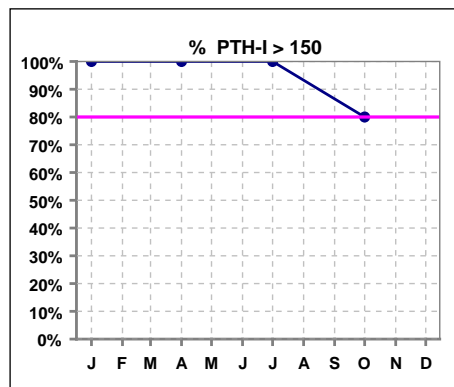
*Methodology: a) Monthly values based on patient's monthly average of all values present for the month; b) Quarter values are average of all values for quarter; c) Values not averaged use last value present at months end.

III. OSTEODYSTROPHY - CONT.

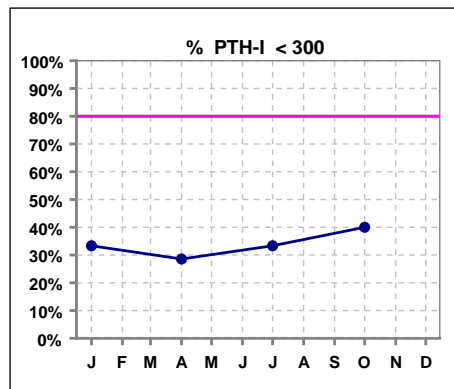
	Jan	Feb	Mar	Apr	May	Jun	Jul	Aug	Sep	Oct	Nov	Dec
# Calcium	13	13	12	11	9	13	11	11	11	11	10	10
# Calcium > 8.4				5	8	7	9	7	9	8	9	7
# Calcium > 8.5	8	10	9									
Pop. Mean	9.1	8.9	8.8	8.7	9.1	8.9	9.4	8.8	8.9	9.3	9.3	9.0
Std. Deviation	0.69	0.70	0.69	0.67	0.75	0.96	0.82	1.29	0.53	1.23	0.65	0.84
Network Mean												
Natl. Mean '06	9	9	9	9	9	9	9	9	9	9	9	9
% Calcium > 8.4	77%	85%	75%	45%	89%	54%	82%	64%	82%	73%	90%	70%



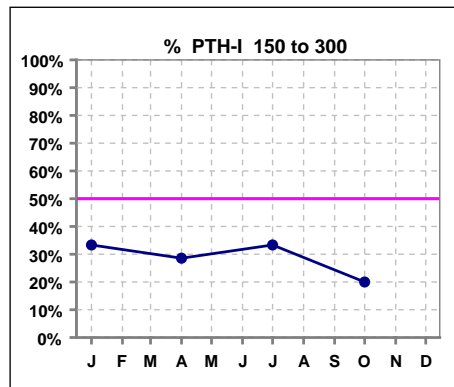
	Jan	Feb	Mar	Apr	May	Jun	Jul	Aug	Sep	Oct	Nov	Dec
# PTH-I	6			7			3			5		
# PTH-I > 150	6			7			3			4		
Pop. Mean	445			452			295			538		
Std. Deviation	285			275			98			480		
Network Mean												
Natl. Mean												
% PTH-I > 150	100%			100%			100%			80%		



	Jan	Feb	Mar	Apr	May	Jun	Jul	Aug	Sep	Oct	Nov	Dec
# PTH-I	6			7			3			5		
# PTH-I < 300	2			2			1			2		
Pop. Mean	445			452			295			538		
Std. Deviation	285			275			98			480		
Network Mean												
Natl. Mean												
% PTH-I < 300	33%			29%			33%			40%		



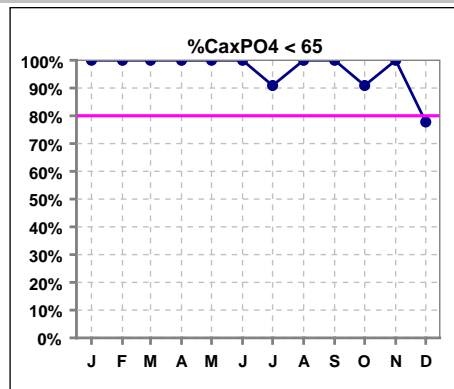
	Jan	Feb	Mar	Apr	May	Jun	Jul	Aug	Sep	Oct	Nov	Dec
# PTH-I	6			7			3			5		
# PTH-I 150 to 300	2			2			1			1		
Pop. Mean	445			452			295			538		
Std. Deviation	285			275			98			480		
Network Mean												
Natl. Mean												
% PTH-I 150 to 300	33%			29%			33%			20%		



*Methodology: a) Monthly values based on patient's monthly average of all values present for the month; b) Quarter values are average of all values for quarter; c) Values not averaged use last value present at months end.

III. OSTEODYSTROPHY - CONT.

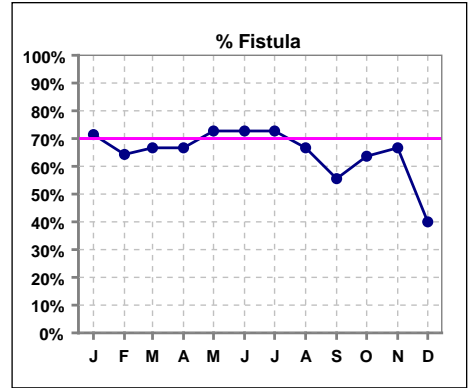
	Jan	Feb	Mar	Apr	May	Jun	Jul	Aug	Sep	Oct	Nov	Dec
# Ca x PO4	13	13	12	11	9	13	11	11	11	11	10	9
# Ca x PO4 < 65				11	9	13	10	11	11	10	10	7
# Ca x PO4 < 55	11	12	11									
Pop. Mean	43.3	41.9	42.3	37.1	46.1	38.7	44.1	40.9	43.0	48.5	46.6	50.2
Std. Deviation	9.5	8.2	8.6	8.7	13.2	11.1	14.6	10.7	10.1	18.1	11.8	19.8
Network Mean												
Natl. Mean												
% Ca x PO4 < 65	100%	100%	100%	100%	100%	100%	91%	100%	100%	91%	100%	78%



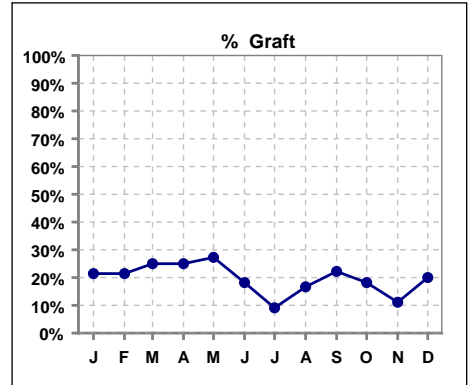
*Methodology: a) Monthly values based on patient's monthly average of all values present for the month; b) Quarter values are average of all values for quarter; c) Values not averaged use last value present at months end.

IV. ACCESS

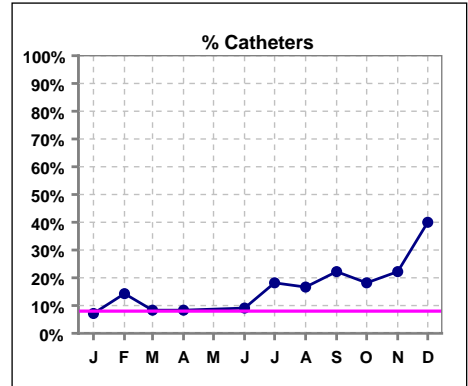
	Jan	Feb	Mar	Apr	May	Jun	Jul	Aug	Sep	Oct	Nov	Dec
# Access	14	14	12	12	11	11	11	12	9	11	9	5
# Fistula	10	9	8	8	8	8	8	8	5	7	6	2
Network % '06	61%	61%	61%	61%	61%	61%	61%	61%	61%	61%	61%	61%
Natl. % '06	45%	45%	45%	45%	45%	45%	45%	45%	45%	45%	45%	45%
% Fistula	71%	64%	67%	67%	73%	73%	73%	67%	56%	64%	67%	40%



	Jan	Feb	Mar	Apr	May	Jun	Jul	Aug	Sep	Oct	Nov	Dec
# Access	14	14	12	12	11	11	11	12	9	11	9	5
# Graft	3	3	3	3	3	2	1	2	2	2	1	1
Network %												
Natl. %												
% Graft	21%	21%	25%	25%	27%	18%	9%	17%	22%	18%	11%	20%

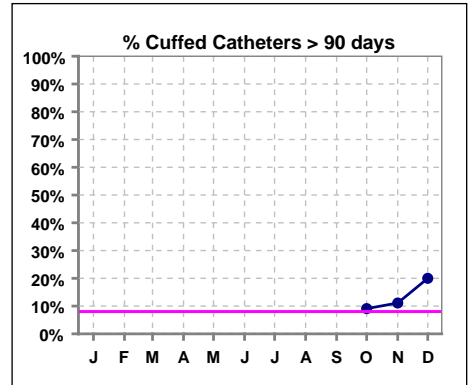


	Jan	Feb	Mar	Apr	May	Jun	Jul	Aug	Sep	Oct	Nov	Dec
# Access	14	14	12	12	11	11	11	12	9	11	9	5
# Catheters	1	2	1	1		1	2	2	2	2	2	2
Network % '06	22%	22%	22%	22%	22%	22%	22%	22%	22%	22%	22%	22%
Natl. % '06	29%	29%	29%	29%	29%	29%	29%	29%	29%	29%	29%	29%
% Catheters	7%	14%	8%	8%		9%	18%	17%	22%	18%	22%	40%



Cuffed Catheters > 90 days

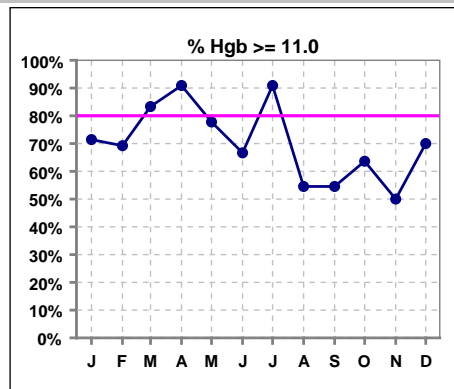
	Jan	Feb	Mar	Apr	May	Jun	Jul	Aug	Sep	Oct	Nov	Dec
# Access	14	14	12	12	11	11	11	12	9	11	9	5
# Cuffed Catheters										1	1	1
Network % '06	22%	22%	22%	22%	22%	22%	22%	22%	22%	22%	22%	22%
Natl. % '06	29%	29%	29%	29%	29%	29%	29%	29%	29%	29%	29%	29%
% Cuffed Catheters										9%	11%	20%



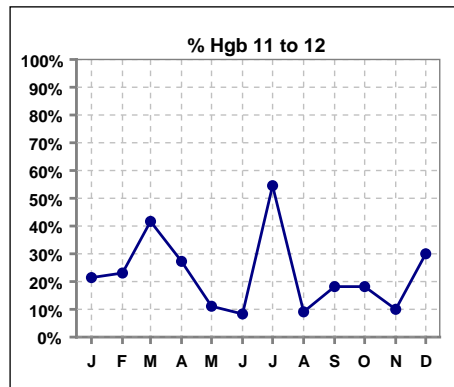
*Methodology: a) Monthly values based on patient's monthly average of all values present for the month; b) Quarter values are average of all values for quarter; c) Values not averaged use last value present at months end.

V. ANEMIA

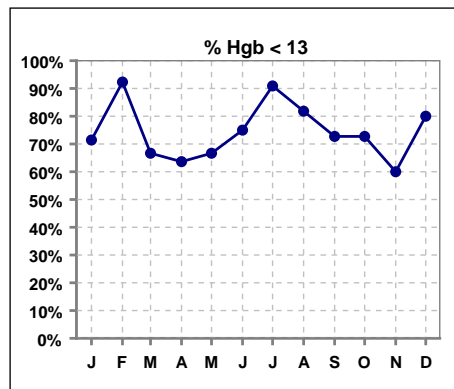
	Jan	Feb	Mar	Apr	May	Jun	Jul	Aug	Sep	Oct	Nov	Dec
# Hgb	14	13	12	11	9	12	11	11	11	11	10	10
# Hgb >= 11.0	10	9	10	10	7	8	10	6	6	7	5	7
Pop. Mean	12.0	11.9	11.9	12.2	12.1	11.8	11.5	11.3	11.6	11.8	11.7	12.2
Std. Deviation	1.1	1.2	1.1	1.0	1.2	1.7	1.2	1.8	2.0	1.6	1.8	1.6
Network Mean	11.8	11.8	11.8	11.8	11.8	11.8	11.8	11.8	11.8	11.8	11.8	11.8
Natl. Mean '06	12	12	12	12	12	12	12	12	12	12	12	12
% Hgb >= 11.0	71%	69%	83%	91%	78%	67%	91%	55%	55%	64%	50%	70%
% Hgb <= 11.0	29%	31%	17%	18%	22%	42%	9%	45%	45%	36%	50%	30%
% Netwk >= 11 '06	87%	87%	87%	87%	87%	87%	87%	87%	87%	87%	87%	87%
% Natl. >= 11 '06	84%	84%	84%	84%	84%	84%	84%	84%	84%	84%	84%	84%



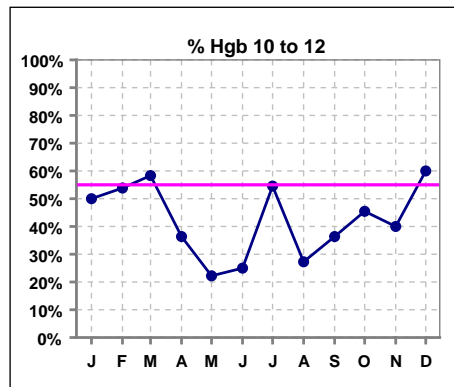
	Jan	Feb	Mar	Apr	May	Jun	Jul	Aug	Sep	Oct	Nov	Dec
# Hgb	14	13	12	11	9	12	11	11	11	11	10	10
# Hgb 11 to 12	3	3	5	3	1	1	6	1	2	2	1	3
Pop. Mean	12.0	11.9	11.9	12.2	12.1	11.8	11.5	11.3	11.6	11.8	11.7	12.2
Std. Deviation	1.1	1.2	1.1	1.0	1.2	1.7	1.2	1.8	2.0	1.6	1.8	1.6
Network Mean	11.8	11.8	11.8	11.8	11.8	11.8	11.8	11.8	11.8	11.8	11.8	11.8
Natl. Mean '06	12	12	12	12	12	12	12	12	12	12	12	12
% Hgb 11 to 12	21%	23%	42%	27%	11%	8%	55%	9%	18%	18%	10%	30%



	Jan	Feb	Mar	Apr	May	Jun	Jul	Aug	Sep	Oct	Nov	Dec
# Hgb	14	13	12	11	9	12	11	11	11	11	10	10
# Hgb < 13	10	12	8	7	6	9	10	9	8	8	6	8
Pop. Mean	12.0	11.9	11.9	12.2	12.1	11.8	11.5	11.3	11.6	11.8	11.7	12.2
Std. Deviation	1.1	1.2	1.1	1.0	1.2	1.7	1.2	1.8	2.0	1.6	1.8	1.6
Network Mean	11.8	11.8	11.8	11.8	11.8	11.8	11.8	11.8	11.8	11.8	11.8	11.8
% Hgb < 13	71%	92%	67%	64%	67%	75%	91%	82%	73%	73%	60%	80%



	Jan	Feb	Mar	Apr	May	Jun	Jul	Aug	Sep	Oct	Nov	Dec
# Hgb	14	13	12	11	9	12	11	11	11	11	10	10
# Hgb 10 to 12	7	7	7	4	2	3	6	3	4	5	4	6
Pop. Mean	12.0	11.9	11.9	12.2	12.1	11.8	11.5	11.3	11.6	11.8	11.7	12.2
Std. Deviation	1.1	1.2	1.1	1.0	1.2	1.7	1.2	1.8	2.0	1.6	1.8	1.6
Network Mean	11.8	11.8	11.8	11.8	11.8	11.8	11.8	11.8	11.8	11.8	11.8	11.8
% Hgb 10 to 12	50%	54%	58%	36%	22%	25%	55%	27%	36%	45%	40%	60%

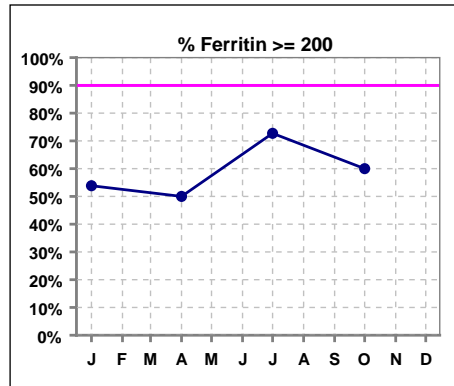


*Methodology: a) Monthly values based on patient's monthly average of all values present for the month; b) Quarter values are average of all values for quarter; c) Values not averaged use last value present at months end.

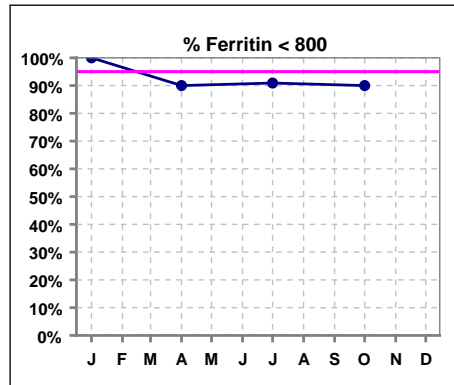
V. ANEMIA - CONT.

Iron Profile

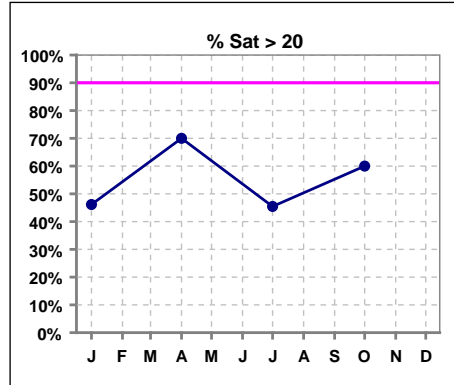
	Jan	Feb	Mar	Apr	May	Jun	Jul	Aug	Sep	Oct	Nov	Dec
# Ferritin	13			10			11			10		
# Ferritin >= 200	7			5			8			6		
Pop. Mean	248			294			358			349		
Std. Deviation	193			266			258			282		
Network Mean												
Natl. Mean '06	583			583			583			583		
% Ferritin >= 200	54%			50%			73%			60%		



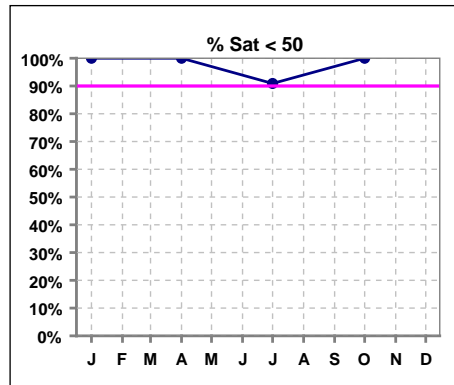
	Jan	Feb	Mar	Apr	May	Jun	Jul	Aug	Sep	Oct	Nov	Dec
# Ferritin	13			10			11			10		
# Ferritin < 800	13			9			10			9		
Pop. Mean	248			294			358			349		
Std. Deviation	193			266			258			282		
Network Mean												
Natl. Mean '06	583			583			583			583		
% Ferritin < 800	100%			90%			91%			90%		



	Jan	Feb	Mar	Apr	May	Jun	Jul	Aug	Sep	Oct	Nov	Dec
# % Sat	13			10			11			10		
# % Sat > 20	6			7			5			6		
Pop. Mean	20			22			26			22		
Std. Deviation	5			7			21			10		
Network Mean												
Natl. Mean '06	28			28			28			28		
% Sat% > 20	46%			70%			45%			60%		
% Netwk >= 20 '06	74%			74%			74%			74%		
% Natl. >=20 '06	79%			79%			79%			79%		



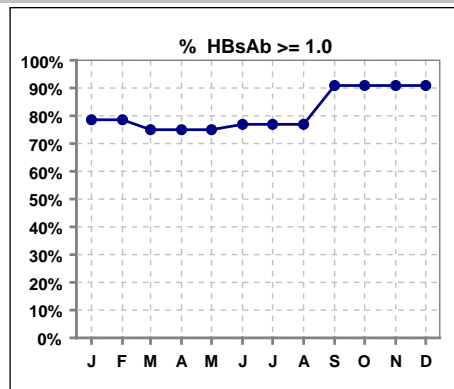
	Jan	Feb	Mar	Apr	May	Jun	Jul	Aug	Sep	Oct	Nov	Dec
# % Sat	13			10			11			10		
# % Sat < 50	13			10			10			10		
Pop. Mean	20			22			26			22		
Std. Deviation	5			7			21			10		
Network Mean												
Natl. Mean '06	28			28			28			28		
% Sat% < 50	100%			100%			91%			100%		



*Methodology: a) Monthly values based on patient's monthly average of all values present for the month; b) Quarter values are average of all values for quarter; c) Values not averaged use last value present at months end.

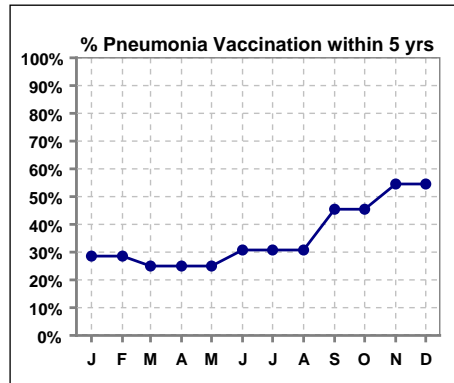
VI. Infection Control

	Jan	Feb	Mar	Apr	May	Jun	Jul	Aug	Sep	Oct	Nov	Dec
# Patient	14	14	12	12	12	13	13	13	11	11	11	11
# HBsAb >= 1.0	11	11	9	9	9	10	10	10	10	10	10	10
% HBsAb >= 1.0	79%	79%	75%	75%	75%	77%	77%	77%	91%	91%	91%	91%



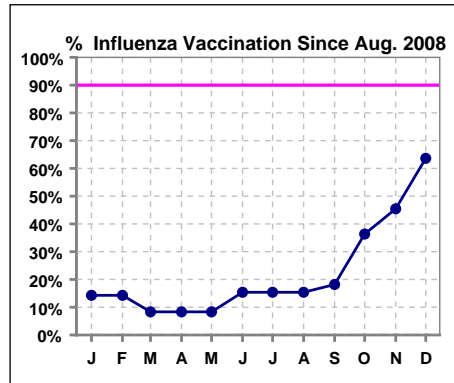
Pneumonia vaccination within the past five years at NKC

	Jan	Feb	Mar	Apr	May	Jun	Jul	Aug	Sep	Oct	Nov	Dec
# Patient	14	14	12	12	12	13	13	13	11	11	11	11
# Pneumonia	4	4	3	3	3	4	4	4	5	5	6	6
% Pneumonia	29%	29%	25%	25%	25%	31%	31%	31%	45%	45%	55%	55%



Influenza vaccination since August at NKC

	Jan	Feb	Mar	Apr	May	Jun	Jul	Aug	Sep	Oct	Nov	Dec
# Patient	14	14	12	12	12	13	13	13	11	11	11	11
# Influenza since 08/08	2	2	1	1	1	2	2	2	2	4	5	7
% Influenza	14%	14%	8%	8%	8%	15%	15%	15%	18%	36%	45%	64%



*Methodology: a) Monthly values based on patient's monthly average of all values present for the month; b) Quarter values are average of all values for quarter; c) Values not averaged use last value present at months end.