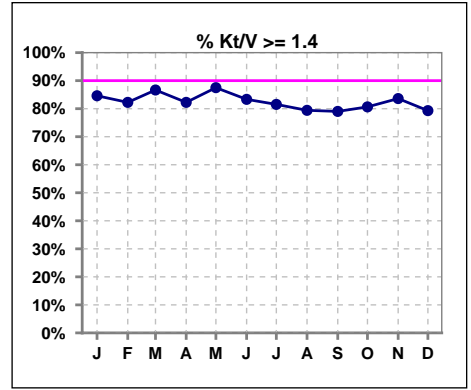
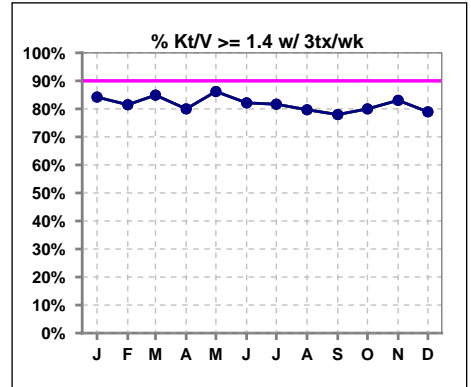


I. ADEQUACY OF DIALYSIS

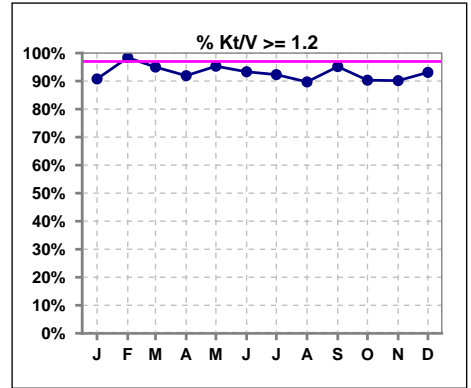
	Jan	Feb	Mar	Apr	May	Jun	Jul	Aug	Sep	Oct	Nov	Dec
# Kt/V	65	62	60	62	64	60	65	68	62	62	61	58
# Kt/V >= 1.4	55	51	52	51	56	50	53	54	49	50	51	46
Pop. Mean	1.64	1.66	1.64	1.64	1.66	1.65	1.65	1.61	1.65	1.63	1.64	1.63
Std. Deviation	0.32	0.26	0.33	0.33	0.33	0.33	0.30	0.32	0.33	0.35	0.34	0.32
% Kt/V >= 1.4	85%	82%	87%	82%	88%	83%	82%	79%	79%	81%	84%	79%



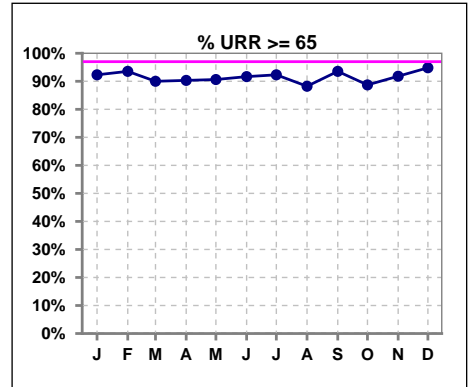
	Jan	Feb	Mar	Apr	May	Jun	Jul	Aug	Sep	Oct	Nov	Dec
# Kt/V w/ 3tx/wk	57	54	53	55	58	56	60	64	59	60	59	57
# Kt/V >= 1.4 w/ 3tx/wk	48	44	45	44	50	46	49	51	46	48	49	45
Pop. Mean	1.62	1.64	1.62	1.60	1.65	1.63	1.63	1.59	1.64	1.61	1.62	1.63
Std. Deviation	0.30	0.26	0.34	0.30	0.33	0.32	0.26	0.28	0.31	0.33	0.31	0.32
% Kt/V >= 1.4 w/ 3tx/wk	84%	81%	85%	80%	86%	82%	82%	80%	78%	80%	83%	79%



	Jan	Feb	Mar	Apr	May	Jun	Jul	Aug	Sep	Oct	Nov	Dec
# Kt/V	65	62	60	62	64	60	65	68	62	62	61	58
# Kt/V >= 1.2	59	61	57	57	61	56	60	61	59	56	55	54
Pop. Mean	1.64	1.66	1.64	1.64	1.66	1.65	1.65	1.61	1.65	1.63	1.64	1.63
Std. Deviation	0.32	0.26	0.33	0.33	0.33	0.33	0.30	0.32	0.33	0.35	0.34	0.32
% Kt/V >= 1.2	91%	98%	95%	92%	95%	93%	92%	90%	95%	90%	90%	93%



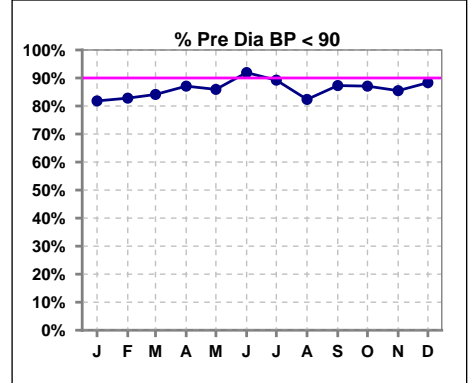
	Jan	Feb	Mar	Apr	May	Jun	Jul	Aug	Sep	Oct	Nov	Dec
# URR	65	62	60	62	64	60	65	68	62	62	61	58
# URR >= 65	60	58	54	56	58	55	60	60	58	55	56	55
Pop. Mean	74	75	74	74	75	75	75	74	75	74	75	75
Std. Deviation	6.91	5.58	8.92	6.63	8.17	7.35	5.71	7.09	5.96	7.27	6.47	6.36
% URR >= 65	92%	94%	90%	90%	91%	92%	92%	88%	94%	89%	92%	95%



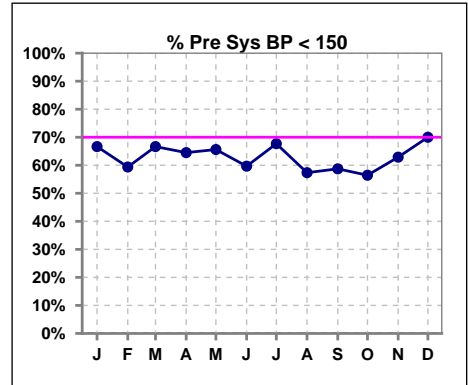
I. ADEQUACY OF DIALYSIS - CONT.

Blood Pressure Control (Pre)

	Jan	Feb	Mar	Apr	May	Jun	Jul	Aug	Sep	Oct	Nov	Dec
# Pre Dia BP	66	64	63	62	64	62	65	68	63	62	62	60
# Pre Dia BP < 90	54	53	53	54	55	57	58	56	55	54	53	53
Pop. Mean	75	76	74	74	73	73	72	75	74	73	74	74
Std. Deviation	15.1	15.4	13.7	14.0	13.9	14.4	13.9	15.7	15.2	14.3	15.4	13.4
% Pre Dia BP < 90	82%	83%	84%	87%	86%	92%	89%	82%	87%	87%	85%	88%



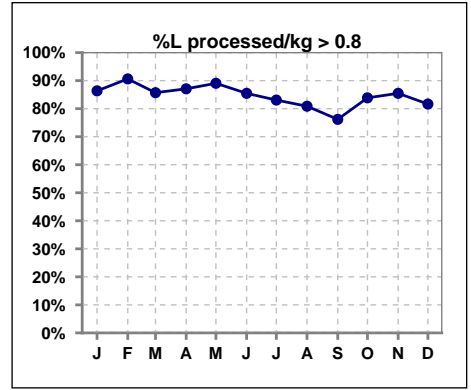
	Jan	Feb	Mar	Apr	May	Jun	Jul	Aug	Sep	Oct	Nov	Dec
# Pre Sys BP	66	64	63	62	64	62	65	68	63	62	62	60
# Pre Sys BP < 150	44	38	42	40	42	37	44	39	37	35	39	42
Pop. Mean	142	147	141	141	140	143	140	144	141	143	142	142
Std. Deviation	21.0	28.1	19.4	20.8	21.5	20.9	20.3	22.6	21.1	20.6	20.5	19.7
%Pre Sys BP <150	67%	59%	67%	65%	66%	60%	68%	57%	59%	56%	63%	70%



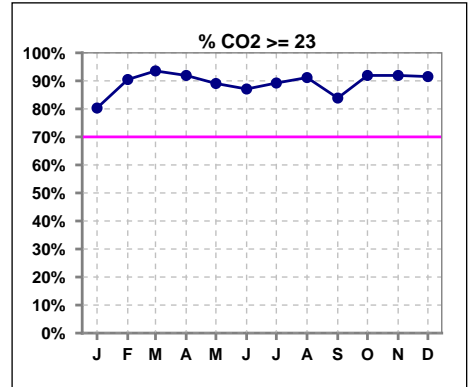
Methodology: a) All labs for 'Adequacy of Dialysis', 'Nutrition', 'Osteodystrophy', 'Anemia' and 'Diabetes' based on last value of month; b) BP's and #L processed are average of all values for month; c) Access data takes last access of month; d) Values for SGA and 'Infection Control' use most recent result.

I. ADEQUACY OF DIALYSIS - CONT.

	Jan	Feb	Mar	Apr	May	Jun	Jul	Aug	Sep	Oct	Nov	Dec
# L processed/kg	66	64	63	62	64	62	65	68	63	62	62	60
# L processed/kg>0.8	57	58	54	54	57	53	54	55	48	52	53	49
Pop. Mean	1	1	1	1	1	1	1	1	1	1	1	1
Std. Deviation	0.2	0.2	0.3	0.2	0.2	0.3	0.3	0.3	0.3	0.3	0.3	0.3
% L processed/kg>0.8	86%	91%	86%	87%	89%	85%	83%	81%	76%	84%	85%	82%



	Jan	Feb	Mar	Apr	May	Jun	Jul	Aug	Sep	Oct	Nov	Dec
# CO2	66	63	62	62	64	62	65	68	62	62	62	59
# CO2 >= 23	53	57	58	57	57	54	58	62	52	57	57	54
Pop. Mean	25	26	27	27	26	26	26	26	26	27	27	27
Std. Deviation	3.36	2.94	2.58	2.54	3.38	3.05	2.87	2.67	3.18	3.45	2.90	3.11
% CO2 >= 23	80%	90%	94%	92%	89%	87%	89%	91%	84%	92%	92%	92%



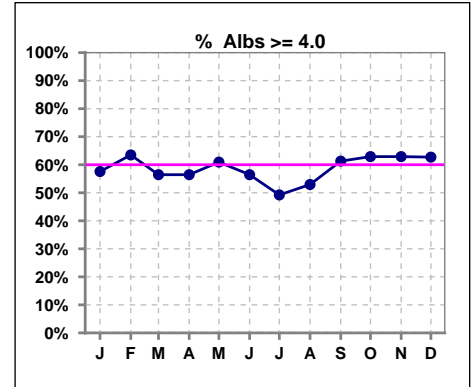
Methodology: a) All labs for 'Adequacy of Dialysis', 'Nutrition', 'Osteodystrophy', 'Anemia' and 'Diabetes' based on last value of month; b) BP's and #L processed are average of all values for month; c) Access data takes last access of month; d) Values for SGA and 'Infection Control' use most recent result.

Lake City Kidney Center - Center Hemodialysis
Quality Assurance Reports
 Through period ending Dec. 31, 2010

*Albumin values use BCG method - as of July 2001

II. NUTRITION

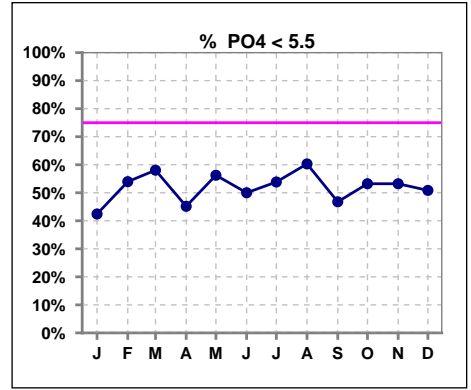
	Jan	Feb	Mar	Apr	May	Jun	Jul	Aug	Sep	Oct	Nov	Dec
# Albumin	66	63	62	62	64	62	65	68	62	62	62	59
# Albumin >= 4.0	38	40	35	35	39	35	32	36	38	39	39	37
Pop. Mean	4.0	4.0	3.9	4.0	4.0	3.9	3.9	3.9	4.0	4.0	4.0	4.0
Std. Deviation	0.34	0.36	0.34	0.36	0.38	0.36	0.41	0.37	0.33	0.30	0.32	0.28
% Alb >= 3.5	89%	94%	94%	94%	89%	90%	86%	88%	94%	94%	95%	98%
% Alb >= 3.0	100%	100%	100%	98%	98%	100%	98%	99%	98%	100%	100%	100%
% Alb >= 4.0	58%	63%	56%	56%	61%	56%	49%	53%	61%	63%	63%	63%



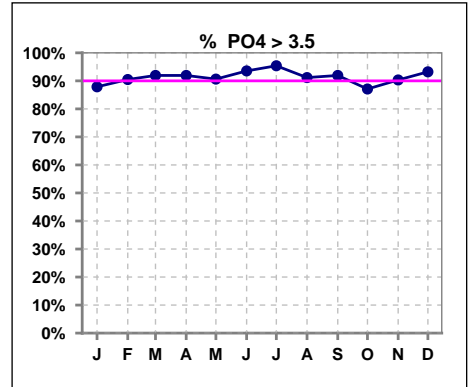
Methodology: a) All labs for 'Adequacy of Dialysis', 'Nutrition', 'Osteodystrophy', 'Anemia' and 'Diabetes' based on last value of month; b) BP's and #L processed are average of all values for month; c) Access data takes last access of month; d) Values for SGA and 'Infection Control' use most recent result.

III. OSTEODYSTROPHY

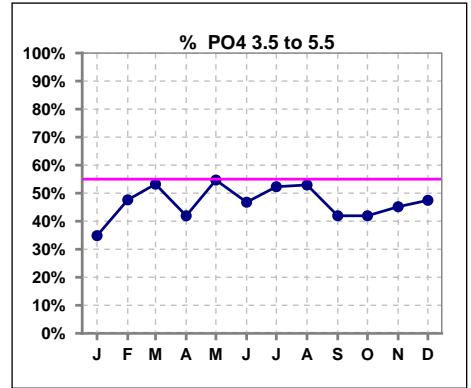
	Jan	Feb	Mar	Apr	May	Jun	Jul	Aug	Sep	Oct	Nov	Dec
# PO4	66	63	62	62	64	62	65	68	62	62	62	59
# PO4 < 5.5	28	34	36	28	36	31	35	41	29	33	33	30
Pop. Mean	5.6	5.4	5.5	5.6	5.4	5.4	5.4	5.4	5.8	5.4	5.4	5.5
Std. Deviation	1.76	1.62	1.78	1.83	1.70	1.51	1.15	1.39	1.86	1.60	1.37	1.51
% PO4 < 5.5	42%	54%	58%	45%	56%	50%	54%	60%	47%	53%	53%	51%



	Jan	Feb	Mar	Apr	May	Jun	Jul	Aug	Sep	Oct	Nov	Dec
# PO4	66	63	62	62	64	62	65	68	62	62	62	59
# PO4 > 3.5	58	57	57	57	58	58	62	62	57	54	56	55
Pop. Mean	5.6	5.4	5.5	5.6	5.4	5.4	5.4	5.4	5.8	5.4	5.4	5.5
Std. Deviation	1.76	1.62	1.78	1.83	1.70	1.51	1.15	1.39	1.86	1.60	1.37	1.51
% PO4 > 3.5	88%	90%	92%	92%	91%	94%	95%	91%	92%	87%	90%	93%



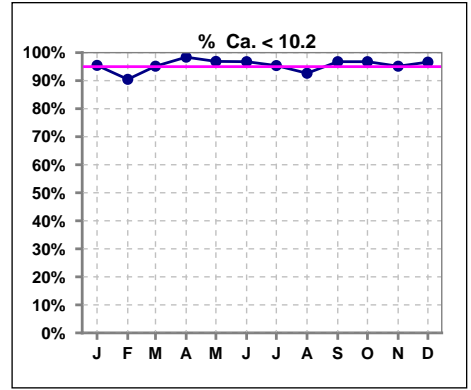
	Jan	Feb	Mar	Apr	May	Jun	Jul	Aug	Sep	Oct	Nov	Dec
# PO4	66	63	62	62	64	62	65	68	62	62	62	59
# PO4 3.5 to 5.5	23	30	33	26	35	29	34	36	26	26	28	28
Pop. Mean	5.6	5.4	5.5	5.6	5.4	5.4	5.4	5.4	5.8	5.4	5.4	5.5
Std. Deviation	1.76	1.62	1.78	1.83	1.70	1.51	1.15	1.39	1.86	1.60	1.37	1.51
% PO4 3.5 to 5.5	35%	48%	53%	42%	55%	47%	52%	53%	42%	42%	45%	47%



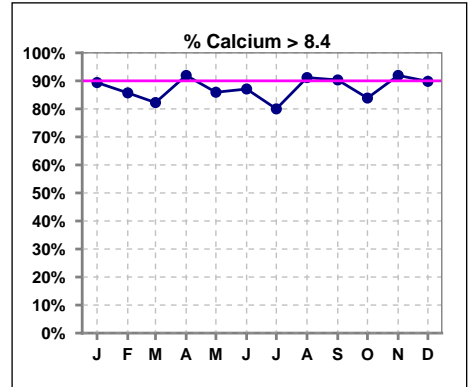
Methodology: a) All labs for 'Adequacy of Dialysis', 'Nutrition', 'Osteodystrophy', 'Anemia' and 'Diabetes' based on last value of month; b) BP's and #L processed are average of all values for month; c) Access data takes last access of month; d) Values for SGA and 'Infection Control' use most recent result.

III. OSTEODYSTROPHY - CONT.

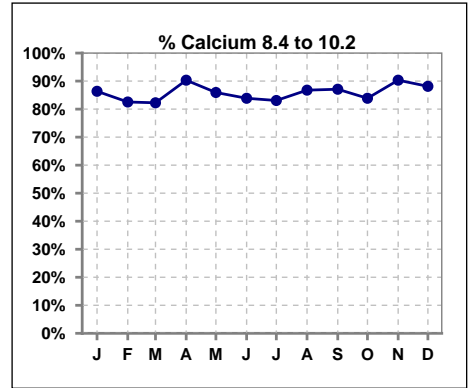
	Jan	Feb	Mar	Apr	May	Jun	Jul	Aug	Sep	Oct	Nov	Dec
# Calcium	66	63	62	62	64	62	65	68	62	62	62	59
# Calcium < 10.2	63	57	59	61	62	60	62	63	60	60	59	57
Pop. Mean	9.3	9.3	9.1	9.2	9.2	9.3	9.1	9.3	9.3	9.2	9.3	9.2
Std. Deviation	0.65	0.75	0.72	0.62	0.68	0.66	0.71	0.67	0.68	0.63	0.59	0.66
% Ca < 10.2	95%	90%	95%	98%	97%	97%	95%	93%	97%	97%	95%	97%



	Jan	Feb	Mar	Apr	May	Jun	Jul	Aug	Sep	Oct	Nov	Dec
# Calcium	66	63	62	62	64	62	65	68	62	62	62	59
# Calcium > 8.4	59	54	51	57	55	54	52	62	56	52	57	53
Pop. Mean	9.3	9.3	9.1	9.2	9.2	9.3	9.1	9.3	9.3	9.2	9.3	9.2
Std. Deviation	0.65	0.75	0.72	0.62	0.68	0.66	0.71	0.67	0.68	0.63	0.59	0.66
% Calcium > 8.4	89%	86%	82%	92%	86%	87%	80%	91%	90%	84%	92%	90%

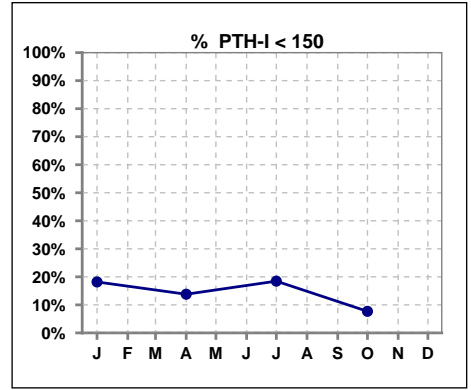


	Jan	Feb	Mar	Apr	May	Jun	Jul	Aug	Sep	Oct	Nov	Dec
# Calcium	66	63	62	62	64	62	65	68	62	62	62	59
# Calcium 8.4 to 10.2	57	52	51	56	55	52	54	59	54	52	56	52
Pop. Mean	9.3	9.3	9.1	9.2	9.2	9.3	9.1	9.3	9.3	9.2	9.3	9.2
Std. Deviation	0.65	0.75	0.72	0.62	0.68	0.66	0.71	0.67	0.68	0.63	0.59	0.66
% Calcium 8.4 to 10.2	86%	83%	82%	90%	86%	84%	83%	87%	87%	84%	90%	88%

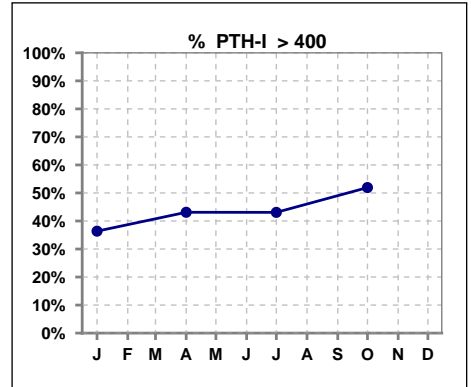


III. OSTEODYSTROPHY - CONT.

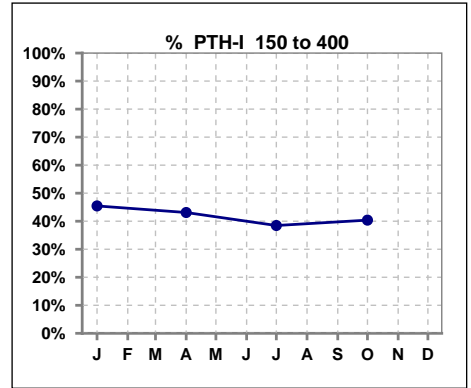
	Jan	Feb	Mar	Apr	May	Jun	Jul	Aug	Sep	Oct	Nov	Dec
# PTH-I	66			58			65			52		
# PTH-I < 150	12			8			12			4		
Pop. Mean	471			567			539			546		
Std. Deviation	623			735			733			498		
% PTH-I < 150	18%			14%			18%			8%		



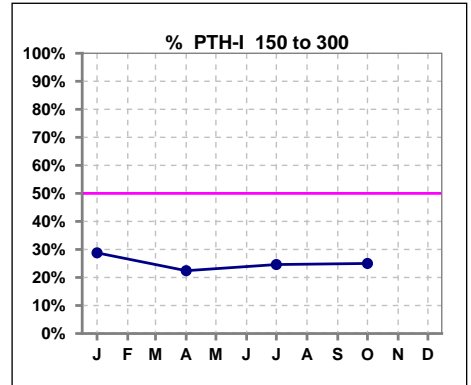
	Jan	Feb	Mar	Apr	May	Jun	Jul	Aug	Sep	Oct	Nov	Dec
# PTH-I	66			58			65			52		
# PTH-I > 400	24			25			28			27		
Pop. Mean	471			567			539			546		
Std. Deviation	623			735			733			498		
% PTH-I > 400	36%			43%			43%			52%		



	Jan	Feb	Mar	Apr	May	Jun	Jul	Aug	Sep	Oct	Nov	Dec
# PTH-I	66			58			65			52		
# PTH-I 150 to 400	30			25			25			21		
Pop. Mean	471			567			539			546		
Std. Deviation	623			735			733			498		
% PTH-I 150 to 400	45%			43%			38%			40%		



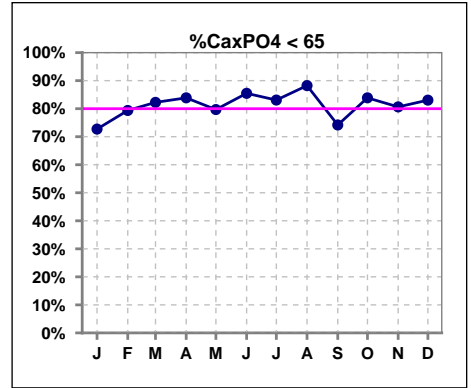
	Jan	Feb	Mar	Apr	May	Jun	Jul	Aug	Sep	Oct	Nov	Dec
# PTH-I	66			58			65			52		
# PTH-I 150 to 300	19			13			16			13		
Pop. Mean	471			567			539			546		
Std. Deviation	623			735			733			498		
% PTH-I 150 to 300	29%			22%			25%			25%		



Methodology: a) All labs for 'Adequacy of Dialysis', 'Nutrition', 'Osteodystrophy', 'Anemia' and 'Diabetes' based on last value of month; b) BP's and #L processed are average of all values for month; c) Access data takes last access of month; d) Values for SGA and 'Infection Control' use most recent result.

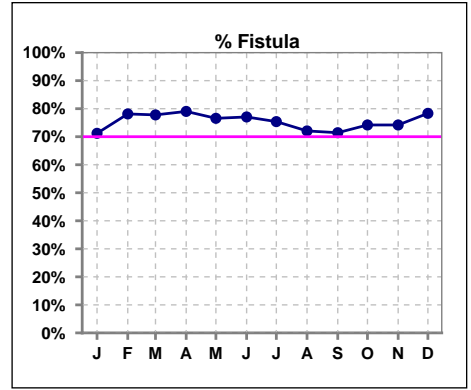
III. OSTEODYSTROPHY - CONT.

	Jan	Feb	Mar	Apr	May	Jun	Jul	Aug	Sep	Oct	Nov	Dec
# Ca x PO4	66	63	62	62	64	62	65	68	62	62	62	59
# Ca x PO4 < 65	48	50	51	52	51	53	54	60	46	52	50	49
Pop. Mean	54.5	51.2	52.0	51.0	52.3	51.0	51.6	50.9	54.4	50.7	51.9	52.7
Std. Deviation	18.3	17.0	18.0	15.4	19.7	13.8	13.6	13.3	16.9	15.4	13.8	15.4
% Ca x PO4 < 65	73%	79%	82%	84%	80%	85%	83%	88%	74%	84%	81%	83%

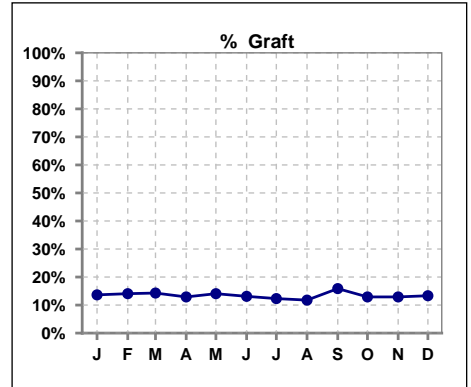


IV. ACCESS

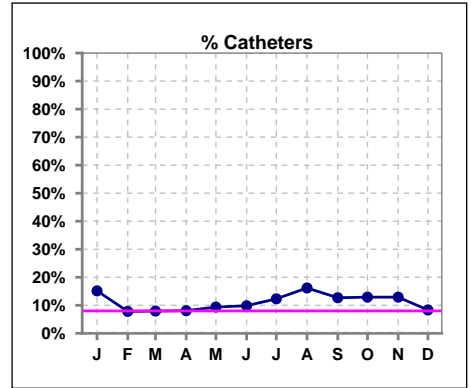
	Jan	Feb	Mar	Apr	May	Jun	Jul	Aug	Sep	Oct	Nov	Dec
# Access	66	64	63	62	64	61	65	68	63	62	62	60
# Fistula	47	50	49	49	49	47	49	49	45	46	46	47
% Fistula	71%	78%	78%	79%	77%	77%	75%	72%	71%	74%	74%	78%



	Jan	Feb	Mar	Apr	May	Jun	Jul	Aug	Sep	Oct	Nov	Dec
# Access	66	64	63	62	64	61	65	68	63	62	62	60
# Graft	9	9	9	8	9	8	8	8	10	8	8	8
% Graft	14%	14%	14%	13%	14%	13%	12%	12%	16%	13%	13%	13%



	Jan	Feb	Mar	Apr	May	Jun	Jul	Aug	Sep	Oct	Nov	Dec
# Access	66	64	63	62	64	61	65	68	63	62	62	60
# Catheters	10	5	5	5	6	6	8	11	8	8	8	5
% Catheters	15%	8%	8%	8%	9%	10%	12%	16%	13%	13%	13%	8%

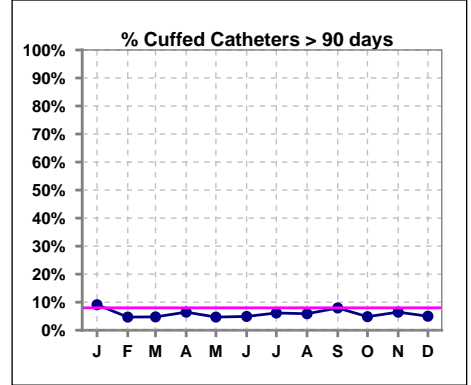


Methodology: a) All labs for 'Adequacy of Dialysis', 'Nutrition', 'Osteodystrophy', 'Anemia' and 'Diabetes' based on last value of month; b) BP's and #L processed are average of all values for month; c) Access data takes last access of month; d) Values for SGA and 'Infection Control' use most recent result.

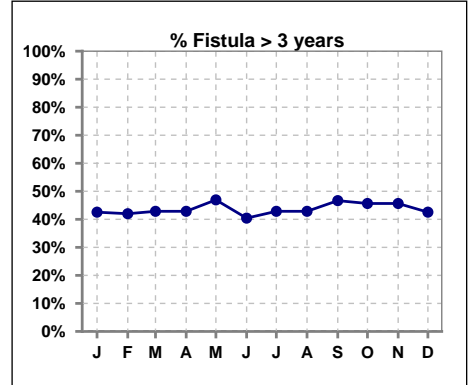
IV. ACCESS - CONT.

Cuffed Catheters > 90 days

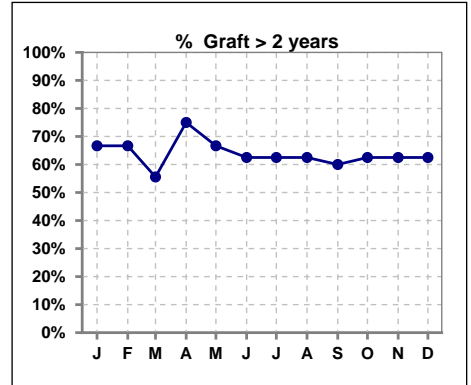
	Jan	Feb	Mar	Apr	May	Jun	Jul	Aug	Sep	Oct	Nov	Dec
# Access	66	64	63	62	64	61	65	68	63	62	62	60
# Cuffed Catheters	6	3	3	4	3	3	4	4	5	3	4	3
% Cuffed Catheters	9%	5%	5%	6%	5%	5%	6%	6%	8%	5%	6%	5%



	Jan	Feb	Mar	Apr	May	Jun	Jul	Aug	Sep	Oct	Nov	Dec
# Fistula	47	50	49	49	49	47	49	49	45	46	46	47
# Fistula > 3 yrs	20	21	21	21	23	19	21	21	21	21	21	20
% Fistula > 3 yrs	43%	42%	43%	43%	47%	40%	43%	43%	47%	46%	46%	43%



	Jan	Feb	Mar	Apr	May	Jun	Jul	Aug	Sep	Oct	Nov	Dec
# Graft	9	9	9	8	9	8	8	8	10	8	8	8
# Graft > 2 yrs	6	6	5	6	6	5	5	5	6	5	5	5
% Graft > 2 yrs	67%	67%	56%	75%	67%	63%	63%	63%	60%	63%	63%	63%

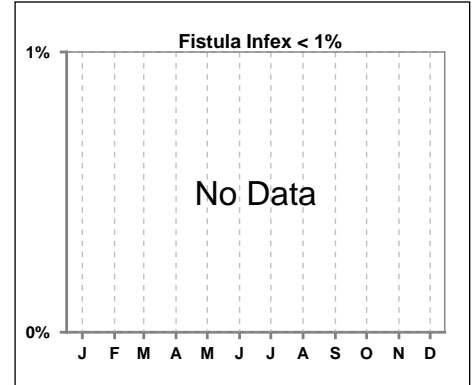


Methodology: a) All labs for 'Adequacy of Dialysis', 'Nutrition', 'Osteodystrophy', 'Anemia' and 'Diabetes' based on last value of month; b) BP's and #L processed are average of all values for month; c) Access data takes last access of month; d) Values for SGA and 'Infection Control' use most recent result.

IV. ACCESS - CONT.

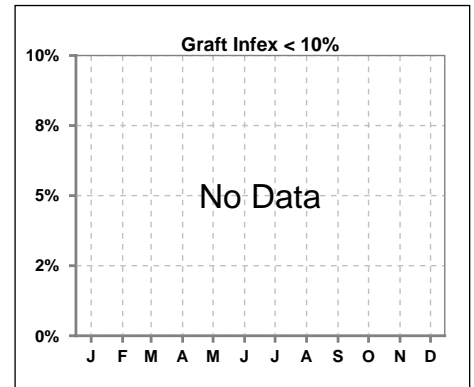
Infection per use-life of access fistula

	Jan	Feb	Mar	Apr	May	Jun	Jul	Aug	Sep	Oct	Nov	Dec
Infex per use-life												



Infection per use-life of access graft

	Jan	Feb	Mar	Apr	May	Jun	Jul	Aug	Sep	Oct	Nov	Dec
Infex per use-life												



Thrombosis Episode - access fistula

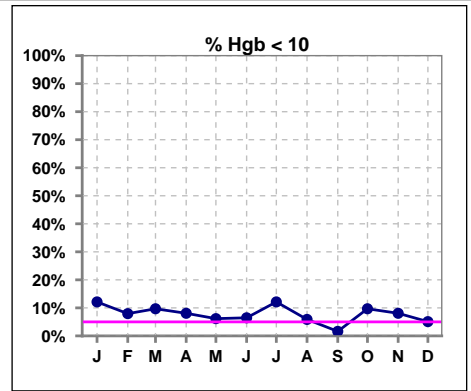
	Jan	Feb	Mar	Apr	May	Jun	Jul	Aug	Sep	Oct	Nov	Dec
Current Month							0.08	0.06			0.04	
Rolling Year-to-date						0.02	0.03	0.03	0.02	0.02	0.02	0.02

Thrombosis Episode - access graft

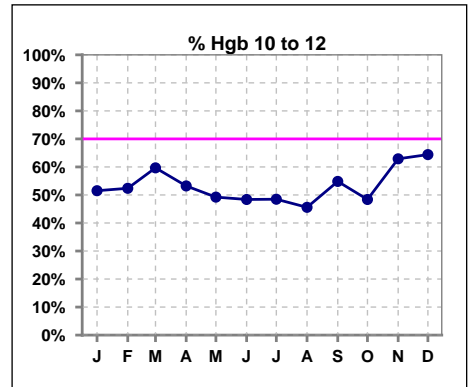
	Jan	Feb	Mar	Apr	May	Jun	Jul	Aug	Sep	Oct	Nov	Dec
Current Month									0.27			
Rolling Year-to-date						0.20	0.09	0.08	0.11	0.05	0.04	0.04

V. ANEMIA

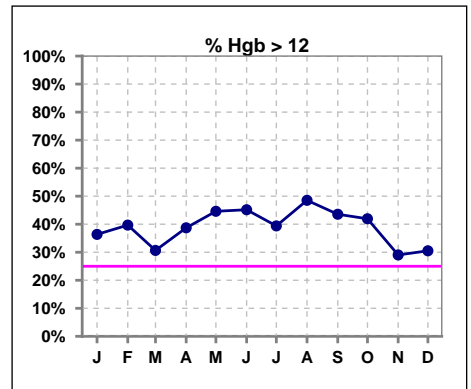
	Jan	Feb	Mar	Apr	May	Jun	Jul	Aug	Sep	Oct	Nov	Dec
# Hgb	66	63	62	62	65	62	66	68	62	62	62	59
# Hgb < 10	8	5	6	5	4	4	8	4	1	6	5	3
Pop. Mean	11.6	11.7	11.6	11.7	11.8	11.9	11.7	11.9	12.0	11.7	11.6	11.6
Std. Deviation	1.4	1.3	1.1	1.2	1.2	1.2	1.3	1.2	0.9	1.3	1.3	1.3
% Hgb < 10	12%	8%	10%	8%	6%	6%	12%	6%	2%	10%	8%	5%



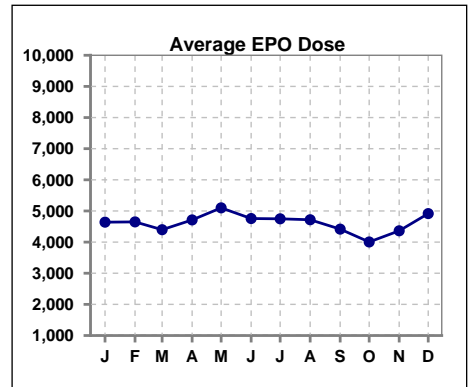
	Jan	Feb	Mar	Apr	May	Jun	Jul	Aug	Sep	Oct	Nov	Dec
# Hgb	66	63	62	62	65	62	66	68	62	62	62	59
# Hgb 10 to 12	34	33	37	33	32	30	32	31	34	30	39	38
Pop. Mean	11.6	11.7	11.6	11.7	11.8	11.9	11.7	11.9	12.0	11.7	11.6	11.6
Std. Deviation	1.4	1.3	1.1	1.2	1.2	1.2	1.3	1.2	0.9	1.3	1.3	1.3
% Hgb 10 to 12	52%	52%	60%	53%	49%	48%	48%	46%	55%	48%	63%	64%



	Jan	Feb	Mar	Apr	May	Jun	Jul	Aug	Sep	Oct	Nov	Dec
# Hgb	66	63	62	62	65	62	66	68	62	62	62	59
# Hgb > 12	24	25	19	24	29	28	26	33	27	26	18	18
Pop. Mean	11.6	11.7	11.6	11.7	11.8	11.9	11.7	11.9	12.0	11.7	11.6	11.6
Std. Deviation	1.4	1.3	1.1	1.2	1.2	1.2	1.3	1.2	0.9	1.3	1.3	1.3
% Hgb > 12	36%	40%	31%	39%	45%	45%	39%	49%	44%	42%	29%	31%



	Jan	Feb	Mar	Apr	May	Jun	Jul	Aug	Sep	Oct	Nov	Dec
# Average EPO Dose	4640	4649	4398	4712	5100	4756	4747	4718	4417	4004	4363	4916

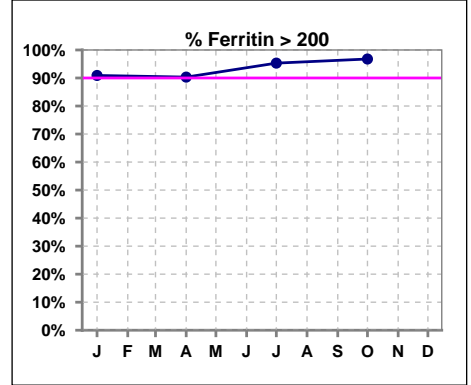


Methodology: a) All labs for 'Adequacy of Dialysis', 'Nutrition', 'Osteodystrophy', 'Anemia' and 'Diabetes' based on last value of month; b) BP's and #L processed are average of all values for month; c) Access data takes last access of month; d) Values for SGA and 'Infection Control' use most recent result.

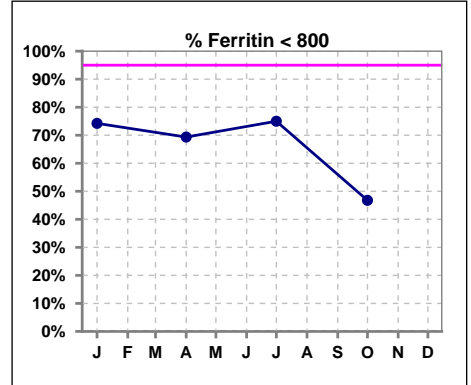
V. ANEMIA - CONT.

Iron Profile

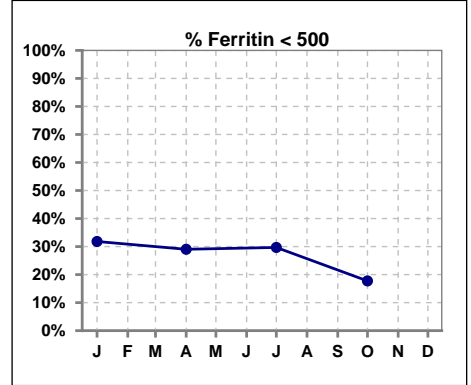
	Jan	Feb	Mar	Apr	May	Jun	Jul	Aug	Sep	Oct	Nov	Dec
# Ferritin	66			62			64			62		
# Ferritin > 200	60			56			61			60		
Pop. Mean	640			661			734			845		
Std. Deviation	367			377			485			428		
% Ferritin > 200	91%			90%			95%			97%		



	Jan	Feb	Mar	Apr	May	Jun	Jul	Aug	Sep	Oct	Nov	Dec
# Ferritin	66			62			64			62		
# Ferritin < 800	49			43			48			29		
Pop. Mean	640			661			734			845		
Std. Deviation	367			377			485			428		
% Ferritin < 800	74%			69%			75%			47%		

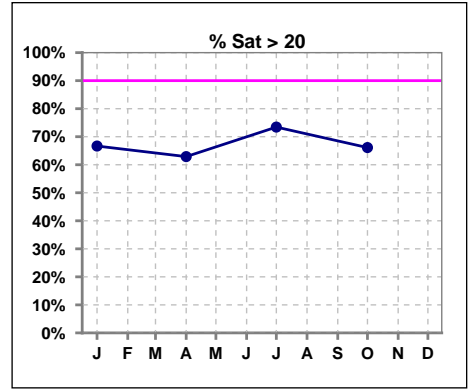


	Jan	Feb	Mar	Apr	May	Jun	Jul	Aug	Sep	Oct	Nov	Dec
# Ferritin	66			62			64			62		
# Ferritin < 500	21			18			19			11		
Pop. Mean	640			661			734			845		
Std. Deviation	367			377			485			428		
% Ferritin < 500	32%			29%			30%			18%		

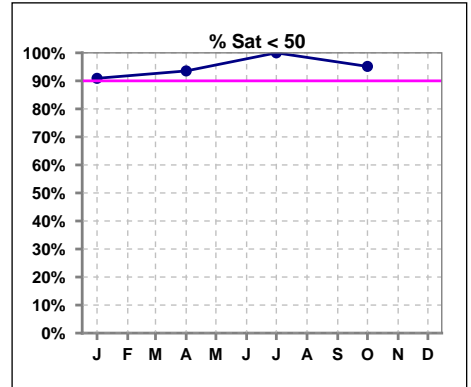


V. ANEMIA - CONT.

	Jan	Feb	Mar	Apr	May	Jun	Jul	Aug	Sep	Oct	Nov	Dec
# % Sat	66			62			64			62		
# % Sat > 20	44			39			47			41		
Pop. Mean	28			26			26			26		
Std. Deviation	16			15			8			12		
% Sat% > 20	67%			63%			73%			66%		

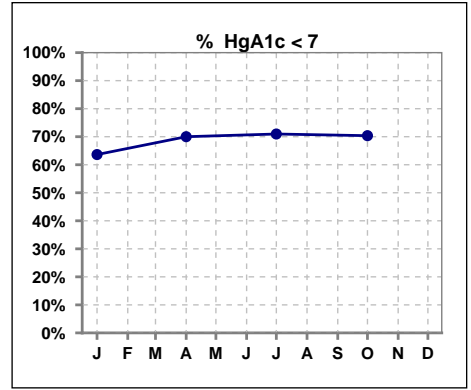


	Jan	Feb	Mar	Apr	May	Jun	Jul	Aug	Sep	Oct	Nov	Dec
# % Sat	66			62			64			62		
# % Sat < 50	60			58			64			59		
Pop. Mean	28			26			26			26		
Std. Deviation	16			15			8			12		
% Sat% < 50	91%			94%			100%			95%		



VI. Diabetes

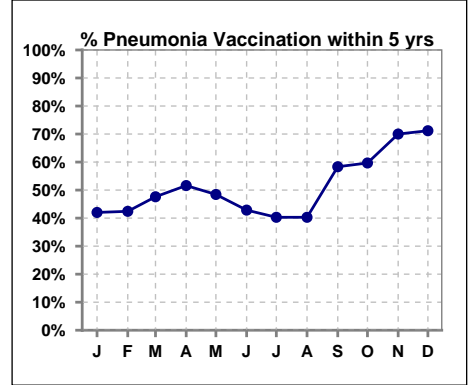
	Jan	Feb	Mar	Apr	May	Jun	Jul	Aug	Sep	Oct	Nov	Dec
# HgA1c	33			30			31			27		
# HgA1c < 7	21			21			22			19		
Pop. Mean	6.6			6.4			6.5			6.7		
Std. Deviation	1.06			0.99			1.08			1.15		
% HgA1c < 7	64%			70%			71%			70%		



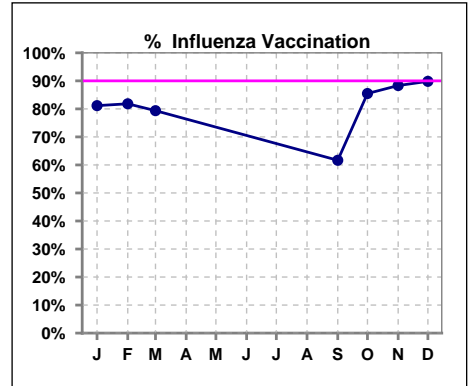
VII. Infection Control

Pneumonia vaccination within the past five years

	Jan	Feb	Mar	Apr	May	Jun	Jul	Aug	Sep	Oct	Nov	Dec
# Patient	69	66	63	62	64	63	67	67	60	62	60	59
# Pneumonia	29	28	30	32	31	27	27	27	35	37	42	42
% Pneumonia	42%	42%	48%	52%	48%	43%	40%	40%	58%	60%	70%	71%



	Jan	Feb	Mar	Apr	May	Jun	Jul	Aug	Sep	Oct	Nov	Dec
# Patient	69	66	63						60	62	60	59
# Influenza	56	54	50						37	53	53	53
% Influenza	81%	82%	79%						62%	85%	88%	90%



Methodology: a) All labs for 'Adequacy of Dialysis', 'Nutrition', 'Osteodystrophy', 'Anemia' and 'Diabetes' based on last value of month; b) BP's and #L processed are average of all values for month; c) Access data takes last access of month; d) Values for SGA and 'Infection Control' use most recent result.