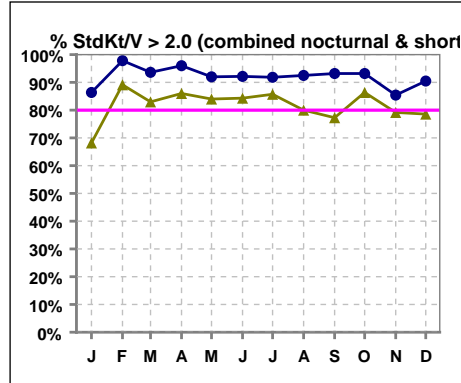


I. ADEQUACY OF DIALYSIS

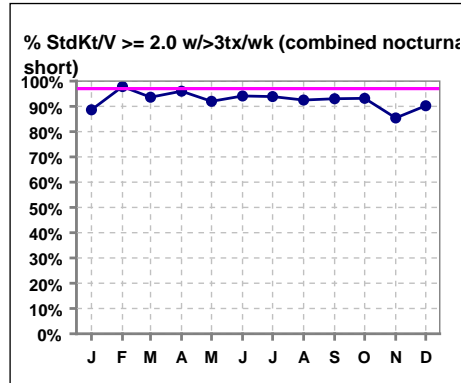
Combined standard nocturnal/short daily

	Jan	Feb	Mar	Apr	May	Jun	Jul	Aug	Sep	Oct	Nov	Dec
# StdKt/V	44	46	47	50	50	51	49	40	44	44	48	42
# StdKt/V > 2.0	38	45	44	48	46	47	45	37	41	41	41	38
Pop. Mean	2.92	3.25	3.12	3.05	2.95	3.12	3.12	3.13	3.23	3.24	3.01	2.99
Std. Deviation	0.93	0.86	0.86	0.59	0.72	0.77	0.77	0.82	0.82	0.82	0.81	0.74
% StdKt/V > 2.0	86%	98%	94%	96%	92%	92%	92%	93%	93%	93%	85%	90%
% StdKt/V >= 2.4	68%	89%	83%	86%	84%	84%	86%	80%	77%	86%	79%	79%



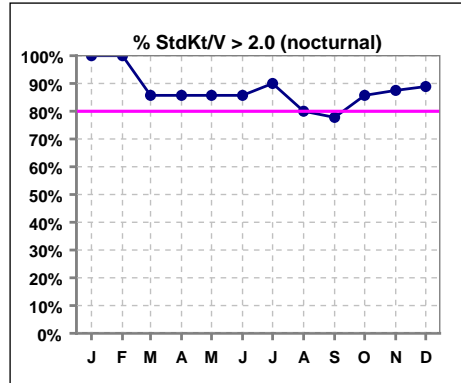
Combined standard nocturnal/short daily

	Jan	Feb	Mar	Apr	May	Jun	Jul	Aug	Sep	Oct	Nov	Dec
# StdKt/V w/ >3tx/wk	44	46	47	50	50	51	49	40	43	44	48	41
# >= 2.0 w/ >3tx/wk	39	45	44	48	46	48	46	37	40	41	41	37
Pop. Mean	2.96	3.25	3.12	3.05	2.95	3.14	3.15	3.15	3.25	3.24	3.04	3.01
Std. Deviation	0.93	0.86	0.86	0.59	0.72	0.74	0.73	0.81	0.81	0.82	0.80	0.75
% >= 2.0 w/ >3tx/wk	89%	98%	94%	96%	92%	94%	94%	93%	93%	93%	85%	90%



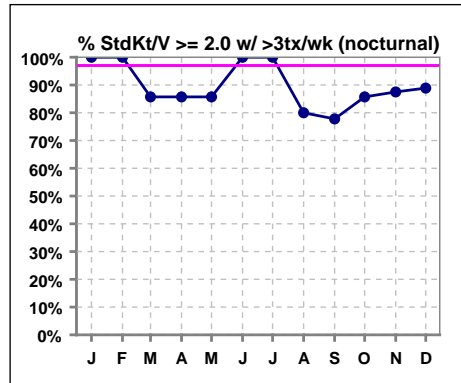
Standard nocturnal

	Jan	Feb	Mar	Apr	May	Jun	Jul	Aug	Sep	Oct	Nov	Dec
# StdKt/V	6	7	7	7	7	7	10	10	9	7	8	9
# StdKt/V > 2.0	6	7	6	6	6	6	9	8	7	6	7	8
Pop. Mean	3.36	4.04	3.44	3.25	2.88	2.87	3.06	2.79	2.87	3.14	3.10	2.82
Std. Deviation	1.56	1.42	1.21	0.93	0.61	0.87	0.75	0.81	0.74	1.12	1.03	0.76
% StdKt/V > 2.0	100%	100%	86%	86%	86%	86%	90%	80%	78%	86%	88%	89%



Standard nocturnal

	Jan	Feb	Mar	Apr	May	Jun	Jul	Aug	Sep	Oct	Nov	Dec
# StdKt/V w/ >3tx/wk	6	7	7	7	7	7	10	10	9	7	8	9
# >= 2.0 w/ >3tx/wk	6	7	6	6	6	7	10	8	7	6	7	8
Pop. Mean	3.31	4.04	3.44	3.25	2.88	3.00	3.16	2.79	2.87	3.14	3.10	2.82
Std. Deviation	1.60	1.42	1.21	0.93	0.61	0.66	0.57	0.81	0.74	1.12	1.03	0.76
% >= 2.0 w/ >3tx/wk	100%	100%	86%	86%	86%	100%	100%	80%	78%	86%	88%	89%

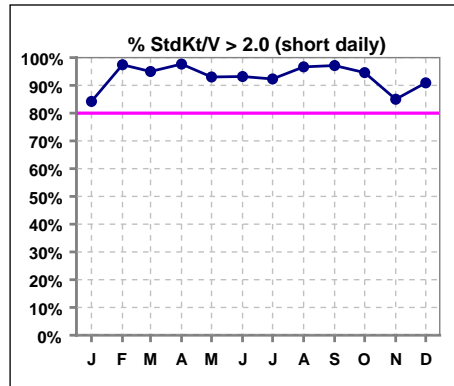


Methodology: a) All labs for 'Adequacy of Dialysis', 'Nutrition', 'Osteodystrophy' and 'Anemia' based on last value of month; b) Access data takes last access of month; c) Values for 'Infection Control' uses most recent result.

I. ADEQUACY OF DIALYSIS - CONT.

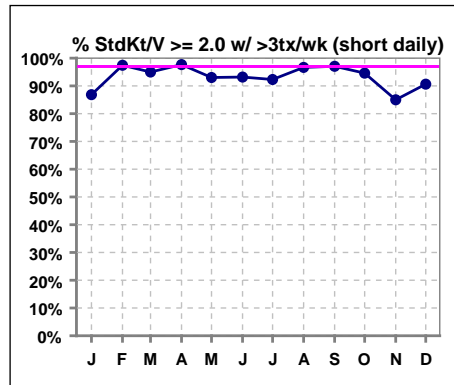
Standard short daily

	Jan	Feb	Mar	Apr	May	Jun	Jul	Aug	Sep	Oct	Nov	Dec
# StdKt/V	38	39	40	43	43	44	39	30	35	37	40	33
# StdKt/V > 2.0	32	38	38	42	40	41	36	29	34	35	34	30
Pop. Mean	2.85	3.11	3.06	3.01	2.96	3.16	3.13	3.25	3.32	3.26	3.00	3.04
Std. Deviation	0.80	0.65	0.79	0.52	0.74	0.76	0.78	0.80	0.83	0.78	0.77	0.74
% StdKt/V > 2.0	84%	97%	95%	98%	93%	93%	92%	97%	97%	95%	85%	91%



Standard short daily

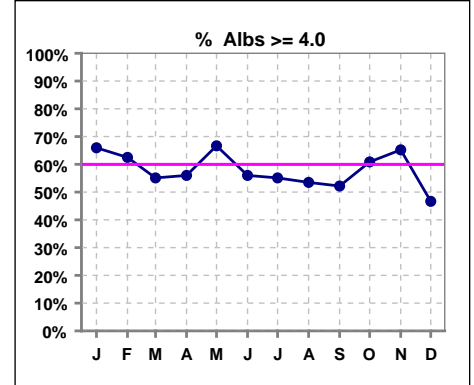
	Jan	Feb	Mar	Apr	May	Jun	Jul	Aug	Sep	Oct	Nov	Dec
# StdKt/V w/ >3tx/wk	38	39	40	43	43	44	39	30	34	37	40	32
# >= 2.0 w/ >3tx/wk	33	38	38	42	40	41	36	29	33	35	34	29
Pop. Mean	2.90	3.11	3.06	3.01	2.96	3.16	3.15	3.28	3.36	3.26	3.02	3.06
Std. Deviation	0.79	0.65	0.79	0.52	0.74	0.76	0.77	0.78	0.81	0.78	0.77	0.75
% >= 2.0 w/ >3tx/wk	87%	97%	95%	98%	93%	93%	92%	97%	97%	95%	85%	91%



*Albumin values use BCG method - as of July 2001

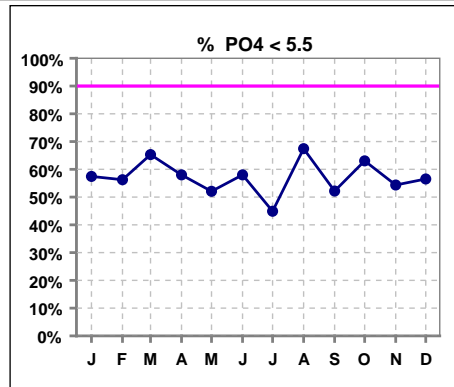
II. NUTRITION

	Jan	Feb	Mar	Apr	May	Jun	Jul	Aug	Sep	Oct	Nov	Dec
# Albumin	47	48	49	50	48	50	49	43	46	46	46	45
# Albumin >= 4.0	31	30	27	28	32	28	27	23	24	28	30	21
Pop. Mean	4.1	4.0	4.0	4.0	4.1	4.0	4.0	3.9	4.0	4.0	4.1	4.0
Std. Deviation	0.49	0.41	0.47	0.46	0.40	0.46	0.51	0.45	0.45	0.46	0.44	0.41
% Alb >= 3.5	91%	88%	88%	90%	94%	86%	90%	81%	87%	83%	91%	89%
% Alb >= 3.0	98%	100%	98%	98%	100%	98%	94%	98%	100%	100%	98%	98%
% Alb >= 4.0	66%	63%	55%	56%	67%	56%	55%	53%	52%	61%	65%	47%

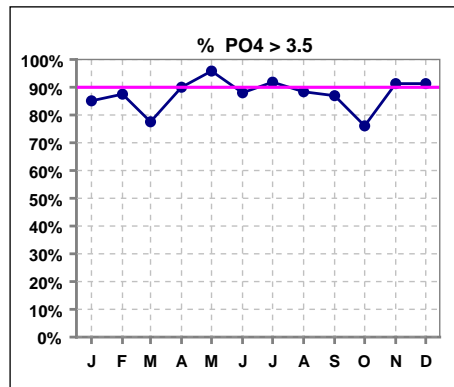


III. OSTEODYSTROPHY

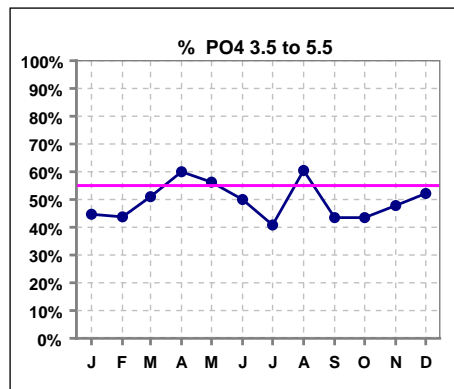
	Jan	Feb	Mar	Apr	May	Jun	Jul	Aug	Sep	Oct	Nov	Dec
# PO4	47	48	49	50	48	50	49	43	46	46	46	46
# PO4 < 5.5	27	27	32	29	25	29	22	29	24	29	25	26
Pop. Mean	5.3	5.3	4.9	5.3	5.3	5.2	5.5	4.9	5.4	4.9	5.5	5.3
Std. Deviation	1.74	1.88	1.39	1.43	1.16	1.49	1.57	1.41	1.77	1.74	1.77	1.73
% PO4 < 5.5	57%	56%	65%	58%	52%	58%	45%	67%	52%	63%	54%	57%



	Jan	Feb	Mar	Apr	May	Jun	Jul	Aug	Sep	Oct	Nov	Dec
# PO4	47	48	49	50	48	50	49	43	46	46	46	46
# PO4 > 3.5	40	42	38	45	46	44	45	38	40	35	42	42
Pop. Mean	5.3	5.3	4.9	5.3	5.3	5.2	5.5	4.9	5.4	4.9	5.5	5.3
Std. Deviation	1.74	1.88	1.39	1.43	1.16	1.49	1.57	1.41	1.77	1.74	1.77	1.73
% PO4 > 3.5	85%	88%	78%	90%	96%	88%	92%	88%	87%	76%	91%	91%

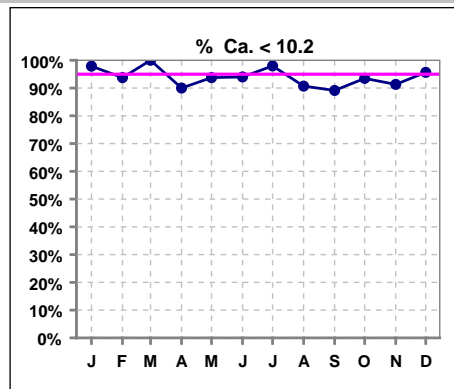


	Jan	Feb	Mar	Apr	May	Jun	Jul	Aug	Sep	Oct	Nov	Dec
# PO4	47	48	49	50	48	50	49	43	46	46	46	46
# PO4 3.5 to 5.5	21	21	25	30	27	25	20	26	20	20	22	24
Pop. Mean	5.3	5.3	4.9	5.3	5.3	5.2	5.5	4.9	5.4	4.9	5.5	5.3
Std. Deviation	1.74	1.88	1.39	1.43	1.16	1.49	1.57	1.41	1.77	1.74	1.77	1.73
% PO4 3.5 to 5.5	45%	44%	51%	60%	56%	50%	41%	60%	43%	43%	48%	52%

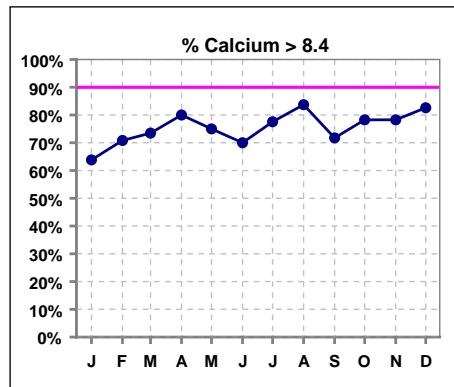


III. OSTEODYSTROPHY - CONT.

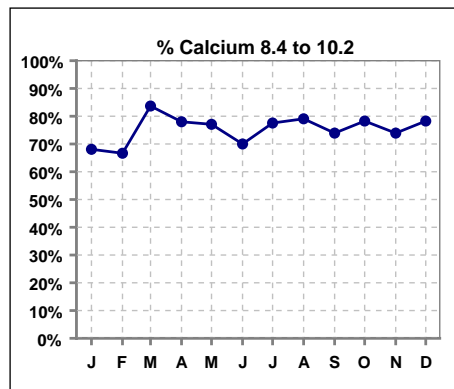
	Jan	Feb	Mar	Apr	May	Jun	Jul	Aug	Sep	Oct	Nov	Dec
# Calcium	47	48	49	50	48	50	49	43	46	46	46	46
# Calcium < 10.2	46	45	49	45	45	47	48	39	41	43	42	44
Pop. Mean	8.8	8.9	8.9	9.0	9.0	8.9	8.9	9.0	9.0	9.0	9.0	9.1
Std. Deviation	0.72	0.83	0.57	0.93	0.73	0.83	0.73	0.80	0.76	0.64	0.82	0.64
% Ca < 10.2	98%	94%	100%	90%	94%	94%	98%	91%	89%	93%	91%	96%



	Jan	Feb	Mar	Apr	May	Jun	Jul	Aug	Sep	Oct	Nov	Dec
# Calcium	47	48	49	50	48	50	49	43	46	46	46	46
# Calcium > 8.4	30	34	36	40	36	35	38	36	33	36	36	38
Pop. Mean	8.8	8.9	8.9	9.0	9.0	8.9	8.9	9.0	9.0	9.0	9.0	9.1
Std. Deviation	0.72	0.83	0.57	0.93	0.73	0.83	0.73	0.80	0.76	0.64	0.82	0.64
% Calcium > 8.4	64%	71%	73%	80%	75%	70%	78%	84%	72%	78%	78%	83%

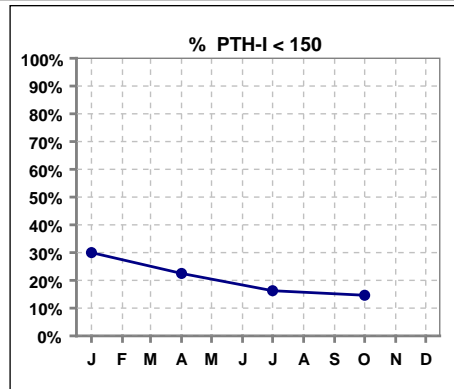


	Jan	Feb	Mar	Apr	May	Jun	Jul	Aug	Sep	Oct	Nov	Dec
# Calcium	47	48	49	50	48	50	49	43	46	46	46	46
# Calcium 8.4 to 10.2	32	32	41	39	37	35	38	34	34	36	34	36
Pop. Mean	8.8	8.9	8.9	9.0	9.0	8.9	8.9	9.0	9.0	9.0	9.0	9.1
Std. Deviation	0.72	0.83	0.57	0.93	0.73	0.83	0.73	0.80	0.76	0.64	0.82	0.64
% Calcium 8.4 to 10.2	68%	67%	84%	78%	77%	70%	78%	79%	74%	78%	74%	78%

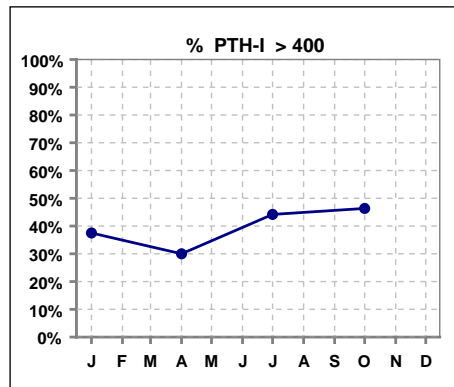


III. OSTEODYSTROPHY - CONT.

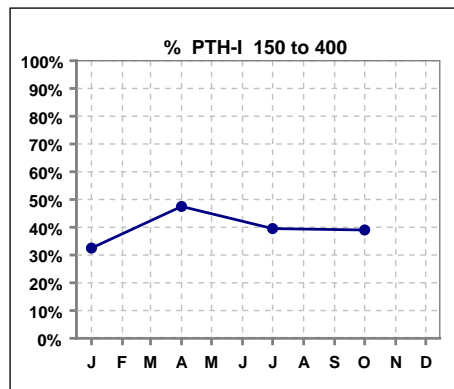
	Jan	Feb	Mar	Apr	May	Jun	Jul	Aug	Sep	Oct	Nov	Dec
# PTH-I	40			40			43			41		
# PTH-I < 150	12			9			7			6		
Pop. Mean	405			349			450			535		
Std. Deviation	346			266			359			529		
% PTH-I < 150	30%			23%			16%			15%		



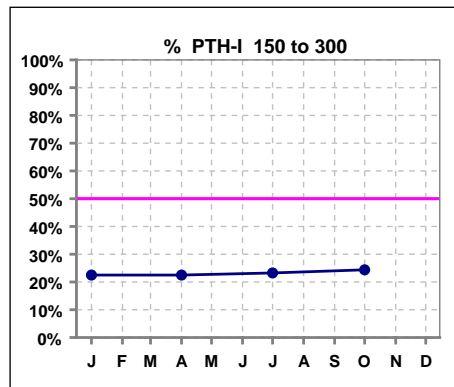
	Jan	Feb	Mar	Apr	May	Jun	Jul	Aug	Sep	Oct	Nov	Dec
# PTH-I	40			40			43			41		
# PTH-I > 400	15			12			19			19		
Pop. Mean	405			349			450			535		
Std. Deviation	346			266			359			529		
% PTH-I > 400	38%			30%			44%			46%		



	Jan	Feb	Mar	Apr	May	Jun	Jul	Aug	Sep	Oct	Nov	Dec
# PTH-I	40			40			43			41		
# PTH-I 150 to 400	13			19			17			16		
Pop. Mean	405			349			450			535		
Std. Deviation	346			266			359			529		
% PTH-I 150 to 400	33%			48%			40%			39%		



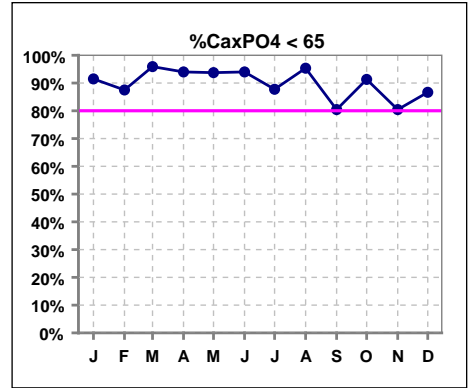
	Jan	Feb	Mar	Apr	May	Jun	Jul	Aug	Sep	Oct	Nov	Dec
# PTH-I	40			40			43			41		
# PTH-I 150 to 300	9			9			10			10		
Pop. Mean	405			349			450			535		
Std. Deviation	346			266			359			529		
% PTH-I 150 to 300	23%			23%			23%			24%		



Methodology: a) All labs for 'Adequacy of Dialysis', 'Nutrition', 'Osteodystrophy' and 'Anemia' based on last value of month; b) Access data takes last access of month; c) Values for 'Infection Control' uses most recent result.

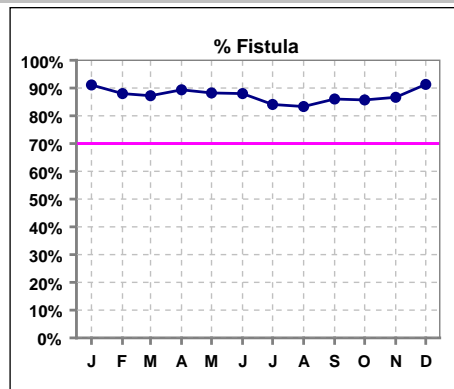
III. OSTEODYSTROPHY - CONT.

	Jan	Feb	Mar	Apr	May	Jun	Jul	Aug	Sep	Oct	Nov	Dec
# Ca x PO4	47	48	49	50	48	50	49	43	46	46	46	45
# Ca x PO4 < 65	43	42	47	47	45	47	43	41	37	42	37	39
Pop. Mean	46.6	47.0	43.4	46.5	46.6	47.0	49.3	44.6	49.9	44.3	50.7	48.3
Std. Deviation	15.1	16.4	11.5	11.5	11.0	13.1	14.8	13.4	17.1	16.5	17.3	16.2
% CaxPO4 < 65	91%	88%	96%	94%	94%	94%	88%	95%	80%	91%	80%	87%
% CaxPO4 < 55	68%	73%	88%	78%	77%	68%	71%	79%	65%	78%	63%	73%

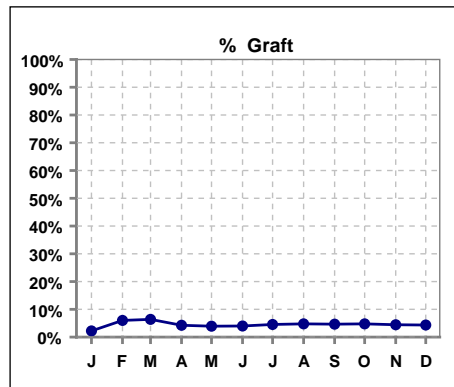


IV. ACCESS

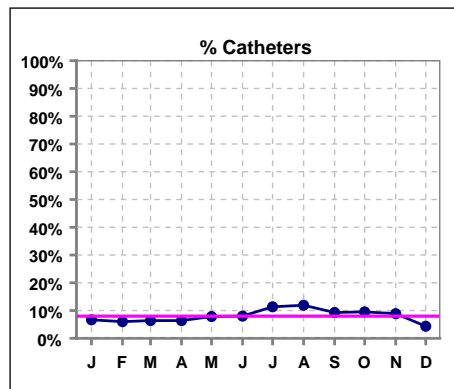
	Jan	Feb	Mar	Apr	May	Jun	Jul	Aug	Sep	Oct	Nov	Dec
# Access	45	50	47	47	51	50	44	42	43	42	45	46
# Fistula	41	44	41	42	45	44	37	35	37	36	39	42
% Fistula	91%	88%	87%	89%	88%	88%	84%	83%	86%	86%	87%	91%



	Jan	Feb	Mar	Apr	May	Jun	Jul	Aug	Sep	Oct	Nov	Dec
# Access	45	50	47	47	51	50	44	42	43	42	45	46
# Graft	1	3	3	2	2	2	2	2	2	2	2	2
% Graft	2%	6%	6%	4%	4%	4%	5%	5%	5%	5%	4%	4%



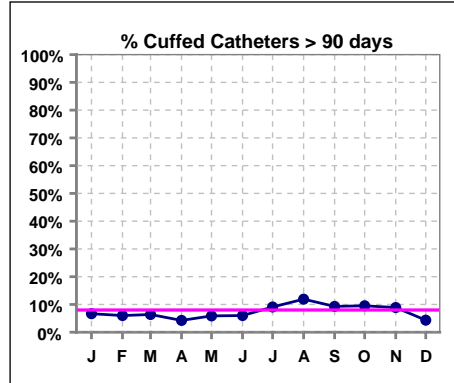
	Jan	Feb	Mar	Apr	May	Jun	Jul	Aug	Sep	Oct	Nov	Dec
# Access	45	50	47	47	51	50	44	42	43	42	45	46
# Catheters	3	3	3	3	4	4	5	5	4	4	4	2
% Catheters	7%	6%	6%	6%	8%	8%	11%	12%	9%	10%	9%	4%



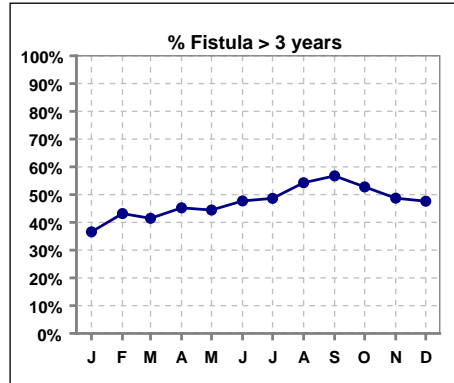
IV. ACCESS - CONT.

Cuffed Catheters > 90 days

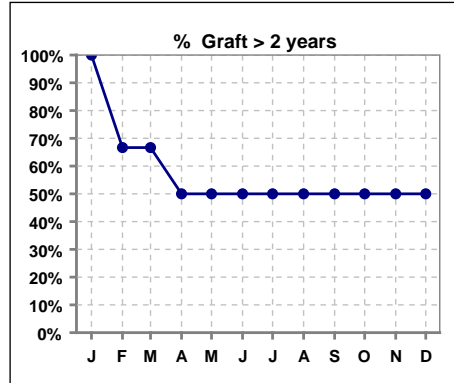
	Jan	Feb	Mar	Apr	May	Jun	Jul	Aug	Sep	Oct	Nov	Dec
# Access	45	50	47	47	51	50	44	42	43	42	45	46
# Cuffed Catheters	3	3	3	2	3	3	4	5	4	4	4	2
% Cuffed Catheters	7%	6%	6%	4%	6%	6%	9%	12%	9%	10%	9%	4%



	Jan	Feb	Mar	Apr	May	Jun	Jul	Aug	Sep	Oct	Nov	Dec
# Fistula	41	44	41	42	45	44	37	35	37	36	39	42
# Fistula > 3 yrs	15	19	17	19	20	21	18	19	21	19	19	20
% Fistula > 3 yrs	37%	43%	41%	45%	44%	48%	49%	54%	57%	53%	49%	48%



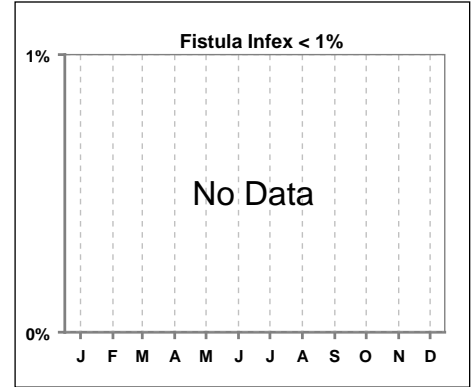
	Jan	Feb	Mar	Apr	May	Jun	Jul	Aug	Sep	Oct	Nov	Dec
# Graft	1	3	3	2	2	2	2	2	2	2	2	2
# Graft > 2 yrs	1	2	2	1	1	1	1	1	1	1	1	1
% Graft > 2 yrs	100%	67%	67%	50%	50%	50%	50%	50%	50%	50%	50%	50%



IV. ACCESS - CONT.

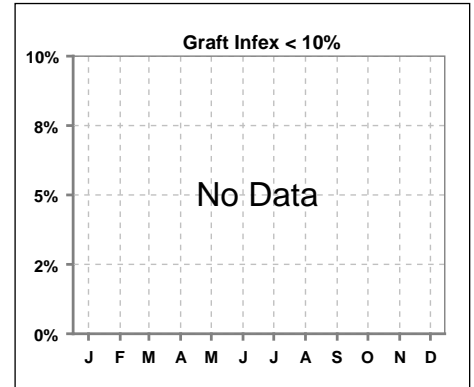
Infection per use-life of access fistula

	Jan	Feb	Mar	Apr	May	Jun	Jul	Aug	Sep	Oct	Nov	Dec
Infex per use-life												



Infection per use-life of access graft

	Jan	Feb	Mar	Apr	May	Jun	Jul	Aug	Sep	Oct	Nov	Dec
Infex per use-life												



Thrombosis Episode - access fistula

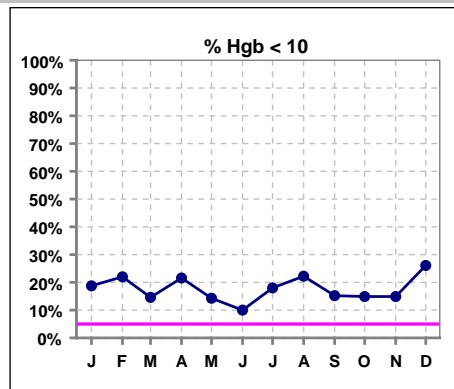
	Jan	Feb	Mar	Apr	May	Jun	Jul	Aug	Sep	Oct	Nov	Dec
Current Month												
Rolling Year-to-date						0.02						

Thrombosis Episode - access graft

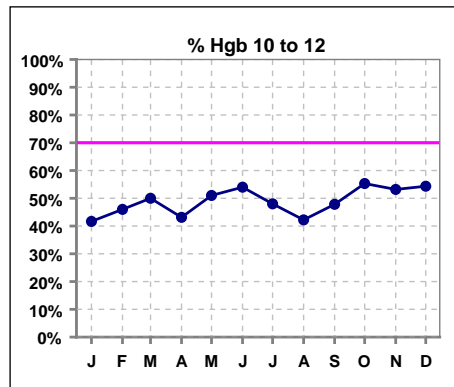
	Jan	Feb	Mar	Apr	May	Jun	Jul	Aug	Sep	Oct	Nov	Dec
Current Month												
Rolling Year-to-date												

V. ANEMIA

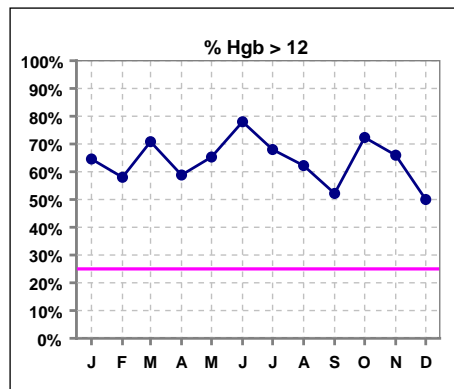
	Jan	Feb	Mar	Apr	May	Jun	Jul	Aug	Sep	Oct	Nov	Dec
# Hgb	48	50	48	51	49	50	50	45	46	47	47	46
# Hgb < 10	9	11	7	11	7	5	9	10	7	7	7	12
Pop. Mean	11.5	11.4	11.6	11.4	11.7	11.5	11.6	11.4	11.3	11.4	11.4	11.0
Std. Deviation	1.6	1.7	1.5	1.7	1.6	1.6	1.7	1.5	1.5	1.4	1.2	1.3
% Hgb < 10	19%	22%	15%	22%	14%	10%	18%	22%	15%	15%	15%	26%



	Jan	Feb	Mar	Apr	May	Jun	Jul	Aug	Sep	Oct	Nov	Dec
# Hgb	48	50	48	51	49	50	50	45	46	47	47	46
# Hgb 10 to 12	20	23	24	22	25	27	24	19	22	26	25	25
Pop. Mean	11.5	11.4	11.6	11.4	11.7	11.5	11.6	11.4	11.3	11.4	11.4	11.0
Std. Deviation	1.6	1.7	1.5	1.7	1.6	1.6	1.7	1.5	1.5	1.4	1.2	1.3
% Hgb 10 to 12	42%	46%	50%	43%	51%	54%	48%	42%	48%	55%	53%	54%



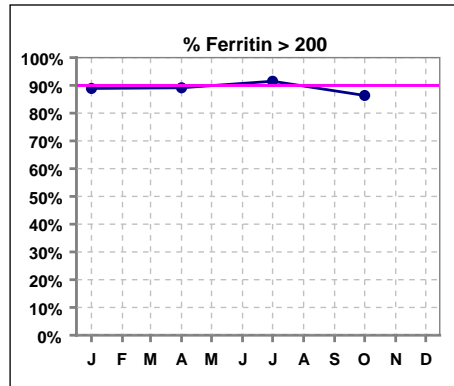
	Jan	Feb	Mar	Apr	May	Jun	Jul	Aug	Sep	Oct	Nov	Dec
# Hgb	48	50	48	51	49	50	50	45	46	47	47	46
# Hgb > 12	19	16	17	18	17	18	17	16	17	14	15	9
Pop. Mean	11.5	11.4	11.6	11.4	11.7	11.5	11.6	11.4	11.3	11.4	11.4	11.0
Std. Deviation	1.6	1.7	1.5	1.7	1.6	1.6	1.7	1.5	1.5	1.4	1.2	1.3
% Hgb > 12	65%	58%	71%	59%	65%	78%	68%	62%	52%	72%	66%	50%



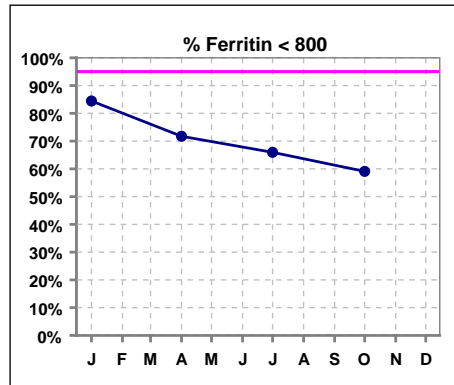
V. ANEMIA - CONT.

Iron Profile

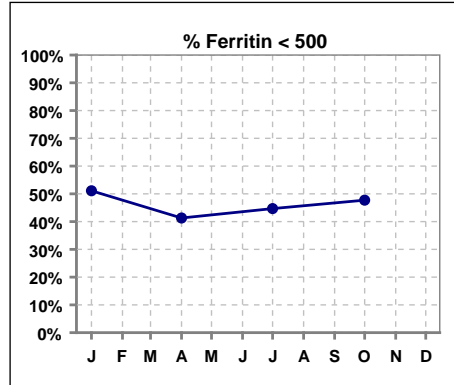
	Jan	Feb	Mar	Apr	May	Jun	Jul	Aug	Sep	Oct	Nov	Dec
# Ferritin	45			46			47			44		
# Ferritin > 200	40			41			43			38		
Pop. Mean	519			628			650			660		
Std. Deviation	324			361			377			465		
% Ferritin > 200	89%			89%			91%			86%		



	Jan	Feb	Mar	Apr	May	Jun	Jul	Aug	Sep	Oct	Nov	Dec
# Ferritin	45			46			47			44		
# Ferritin < 800	38			33			31			26		
Pop. Mean	519			628			650			660		
Std. Deviation	324			361			377			465		
% Ferritin < 800	84%			72%			66%			59%		

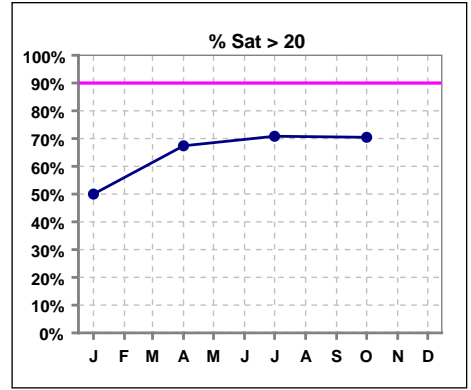


	Jan	Feb	Mar	Apr	May	Jun	Jul	Aug	Sep	Oct	Nov	Dec
# Ferritin	45			46			47			44		
# Ferritin < 500	23			19			21			21		
Pop. Mean	519			628			650			660		
Std. Deviation	324			361			377			465		
% Ferritin < 500	51%			41%			45%			48%		

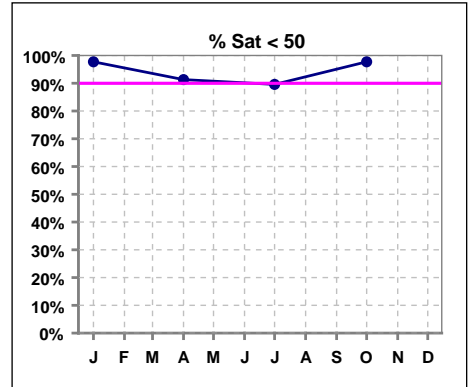


V. ANEMIA - CONT.

	Jan	Feb	Mar	Apr	May	Jun	Jul	Aug	Sep	Oct	Nov	Dec
# % Sat	44			46			48			44		
# % Sat > 20	22			31			34			31		
Pop. Mean	23			29			28			28		
Std. Deviation	11			16			15			13		
% Sat% > 20	50%			67%			71%			70%		



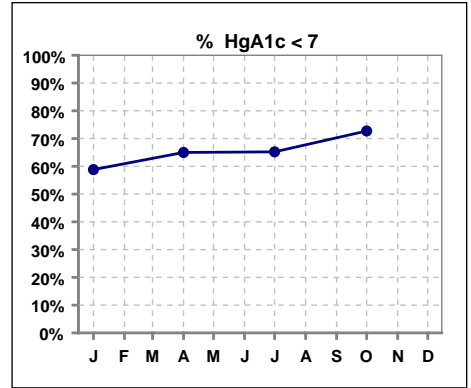
	Jan	Feb	Mar	Apr	May	Jun	Jul	Aug	Sep	Oct	Nov	Dec
# % Sat	44			46			48			44		
# % Sat < 50	43			42			43			43		
Pop. Mean	23			29			28			28		
Std. Deviation	11			16			15			13		
% Sat% < 50	98%			91%			90%			98%		



Methodology: a) All labs for 'Adequacy of Dialysis', 'Nutrition', 'Osteodystrophy' and 'Anemia' based on last value of month; b) Access data takes last access of month; c) Values for 'Infection Control' uses most recent result.

VI. Diabetes

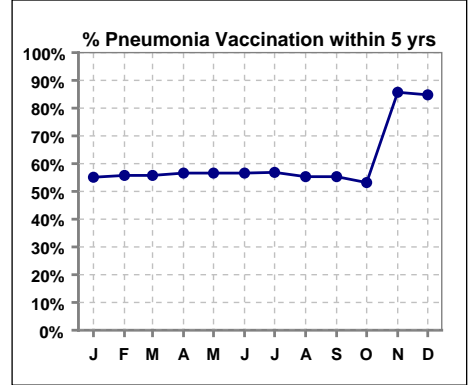
	Jan	Feb	Mar	Apr	May	Jun	Jul	Aug	Sep	Oct	Nov	Dec
# HgA1c	17			20			23			22		
# HgA1c < 7	10			13			15			16		
Pop. Mean	6.4			6.5			6.6			6.6		
Std. Deviation	1.16			1.09			1.02			1.16		
% HgA1c < 7	59%			65%			65%			73%		



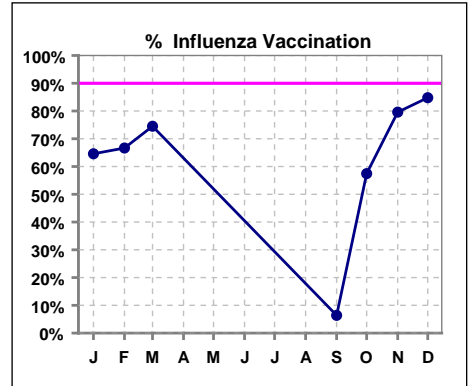
VII. Infection Control

Pneumonia vaccination within the past five years

	Jan	Feb	Mar	Apr	May	Jun	Jul	Aug	Sep	Oct	Nov	Dec
# Patient	49	52	52	53	53	53	51	47	47	47	49	46
# Pneumonia	27	29	29	30	30	30	29	26	26	25	42	39
% Pneumonia	55%	56%	56%	57%	57%	57%	57%	55%	55%	53%	86%	85%



	Jan	Feb	Mar	Apr	May	Jun	Jul	Aug	Sep	Oct	Nov	Dec
# Patient	48	51	51						47	47	49	46
# Influenza	31	34	38						3	27	39	39
% Influenza	65%	67%	75%						6%	57%	80%	85%



Methodology: a) All labs for 'Adequacy of Dialysis', 'Nutrition', 'Osteodystrophy' and 'Anemia' based on last value of month; b) Access data takes last access of month; c) Values for 'Infection Control' uses most recent result.