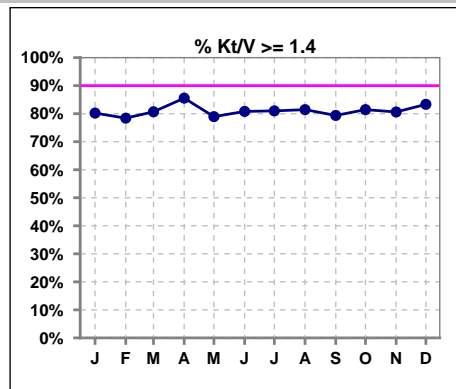
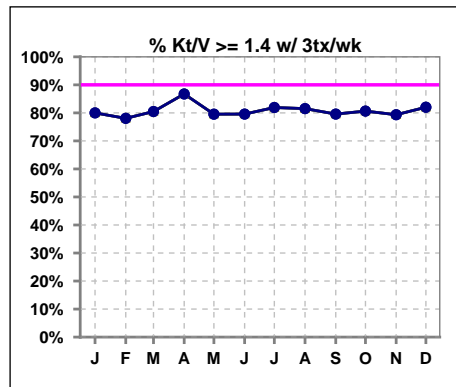


I. ADEQUACY OF DIALYSIS

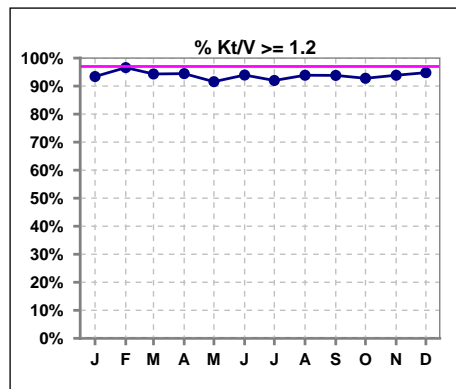
	Jan	Feb	Mar	Apr	May	Jun	Jul	Aug	Sep	Oct	Nov	Dec
# Kt/V	91	88	88	90	95	99	100	97	97	97	98	96
# Kt/V >= 1.4	73	69	71	77	75	80	81	79	77	79	79	80
Pop. Mean	1.62	1.61	1.63	1.69	1.65	1.63	1.60	1.62	1.64	1.63	1.64	1.61
Std. Deviation	0.29	0.29	0.34	0.31	0.31	0.31	0.30	0.29	0.32	0.32	0.30	0.26
% Kt/V >= 1.4	80%	78%	81%	86%	79%	81%	81%	81%	79%	81%	81%	83%



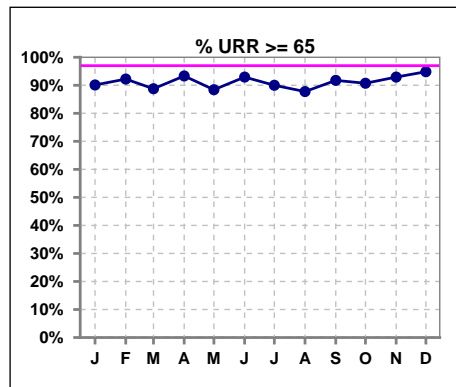
	Jan	Feb	Mar	Apr	May	Jun	Jul	Aug	Sep	Oct	Nov	Dec
# Kt/V w/ 3tx/wk	85	82	82	83	88	93	94	92	93	93	92	89
# Kt/V >= 1.4 w/ 3tx/wk	68	64	66	72	70	74	77	75	74	75	73	73
Pop. Mean	1.61	1.61	1.62	1.70	1.64	1.62	1.59	1.61	1.64	1.61	1.62	1.59
Std. Deviation	0.29	0.29	0.34	0.30	0.31	0.30	0.29	0.28	0.33	0.31	0.29	0.26
% Kt/V >= 1.4 w/ 3tx/wk	80%	78%	80%	87%	80%	80%	82%	82%	80%	81%	79%	82%



	Jan	Feb	Mar	Apr	May	Jun	Jul	Aug	Sep	Oct	Nov	Dec
# Kt/V	91	88	88	90	95	99	100	98	97	97	98	96
# Kt/V >= 1.2	85	85	83	85	87	93	92	92	91	90	92	91
Pop. Mean	1.62	1.61	1.63	1.69	1.65	1.63	1.60	1.61	1.64	1.63	1.64	1.61
Std. Deviation	0.29	0.29	0.34	0.31	0.31	0.31	0.30	0.29	0.32	0.32	0.30	0.26
% Kt/V >= 1.2	93%	97%	94%	94%	92%	94%	92%	94%	94%	93%	94%	95%



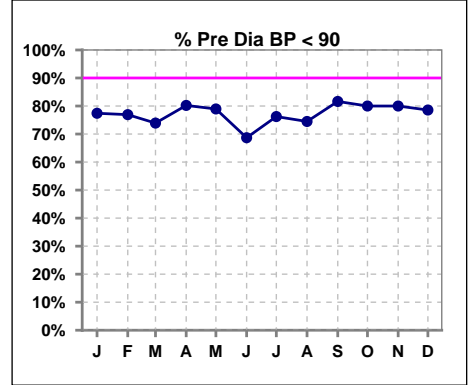
	Jan	Feb	Mar	Apr	May	Jun	Jul	Aug	Sep	Oct	Nov	Dec
# URR	91	90	89	90	95	99	100	98	97	97	99	97
# URR >= 65	82	83	79	84	84	92	90	86	89	88	92	92
Pop. Mean	74	74	74	75	74	74	73	73	74	74	75	74
Std. Deviation	6.11	6.21	6.46	7.55	6.66	6.18	7.22	7.24	6.70	6.97	6.55	5.80
% URR >= 65	90%	92%	89%	93%	88%	93%	90%	88%	92%	91%	93%	95%



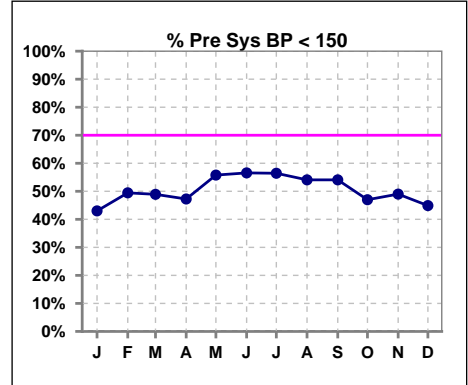
I. ADEQUACY OF DIALYSIS - CONT.

Blood Pressure Control (Pre)

	Jan	Feb	Mar	Apr	May	Jun	Jul	Aug	Sep	Oct	Nov	Dec
# Pre Dia BP	93	91	92	91	95	99	101	98	98	100	100	98
# Pre Dia BP < 90	72	70	68	73	75	68	77	73	80	80	80	77
Pop. Mean	78	79	79	79	78	79	78	79	78	79	79	80
Std. Deviation	14.7	15.4	15.3	14.0	14.3	15.0	14.4	14.4	14.9	13.9	14.4	14.4
% Pre Dia BP < 90	77%	77%	74%	80%	79%	69%	76%	74%	82%	80%	80%	79%

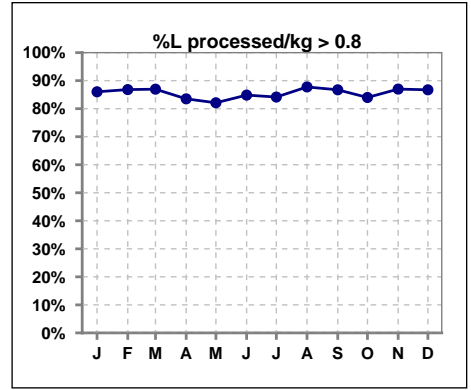


	Jan	Feb	Mar	Apr	May	Jun	Jul	Aug	Sep	Oct	Nov	Dec
# Pre Sys BP	93	91	92	91	95	99	101	98	98	100	100	98
# Pre Sys BP < 150	40	45	45	43	53	56	57	53	53	47	49	44
Pop. Mean	151	152	152	152	150	151	148	150	150	151	151	151
Std. Deviation	19.9	20.5	22.2	20.1	18.2	21.8	20.1	19.4	20.6	18.9	20.2	21.3
%Pre Sys BP <150	43%	49%	49%	47%	56%	57%	56%	54%	54%	47%	49%	45%

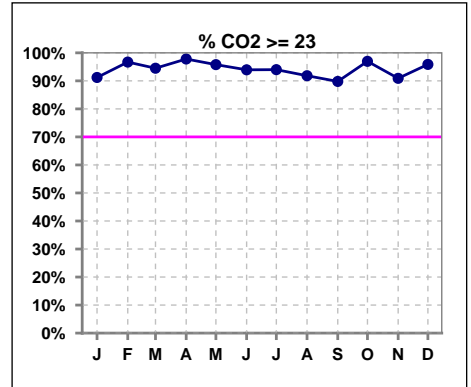


I. ADEQUACY OF DIALYSIS - CONT.

	Jan	Feb	Mar	Apr	May	Jun	Jul	Aug	Sep	Oct	Nov	Dec
# L processed/kg	93	91	92	91	95	99	101	98	98	100	100	98
# L processed/kg>0.8	80	79	80	76	78	84	85	86	85	84	87	85
Pop. Mean	1	1	1	1	1	1	1	1	1	1	1	1
Std. Deviation	0.3	0.3	0.3	0.3	0.3	0.3	0.3	0.3	0.3	0.3	0.3	0.2
% L processed/kg>0.8	86%	87%	87%	84%	82%	85%	84%	88%	87%	84%	87%	87%



	Jan	Feb	Mar	Apr	May	Jun	Jul	Aug	Sep	Oct	Nov	Dec
# CO2	91	91	91	91	95	99	100	98	98	99	99	97
# CO2 >= 23	83	88	86	89	91	93	94	90	88	96	90	93
Pop. Mean	26	27	28	28	27	27	27	27	27	27	27	26
Std. Deviation	2.89	2.50	2.81	2.36	2.80	2.97	2.81	3.01	3.18	2.85	2.88	2.63
% CO2 >= 23	91%	97%	95%	98%	96%	94%	94%	92%	90%	97%	91%	96%

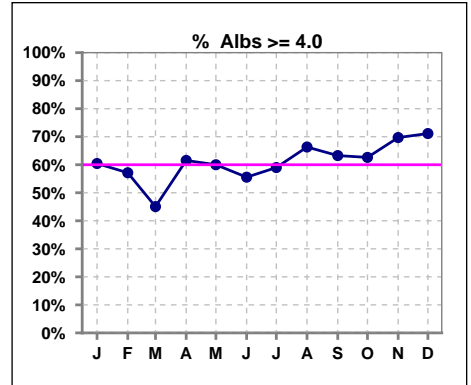


Methodology: a) All labs for 'Adequacy of Dialysis', 'Nutrition', 'Osteodystrophy', 'Anemia' and 'Diabetes' based on last value of month; b) BP's and #L processed are average of all values for month; c) Access data takes last access of month; d) Values for SGA and 'Infection Control' use most recent result.

*Albumin values use BCG method - as of July 2001

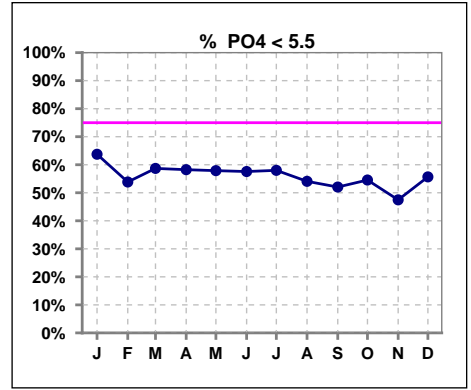
II. NUTRITION

	Jan	Feb	Mar	Apr	May	Jun	Jul	Aug	Sep	Oct	Nov	Dec
# Albumin	91	91	91	91	95	99	100	98	98	99	99	97
# Albumin >= 4.0	55	52	41	56	57	55	59	65	62	62	69	69
Pop. Mean	4.0	4.0	3.9	4.0	4.0	4.0	4.0	4.0	4.0	4.0	4.1	4.1
Std. Deviation	0.29	0.28	0.31	0.29	0.29	0.32	0.33	0.28	0.28	0.31	0.30	0.26
% Alb >= 3.5	92%	97%	95%	97%	97%	94%	95%	96%	98%	95%	97%	99%
% Alb >= 3.0	100%	100%	99%	100%	99%	98%	99%	100%	100%	98%	100%	100%
% Alb >= 4.0	60%	57%	45%	62%	60%	56%	59%	66%	63%	63%	70%	71%

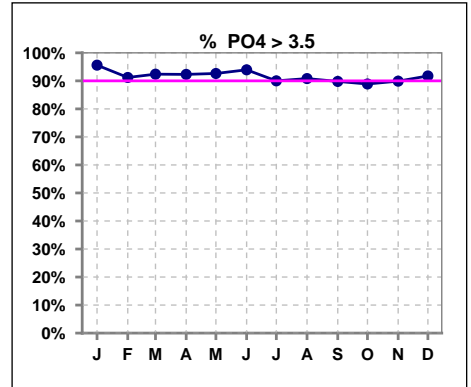


III. OSTEODYSTROPHY

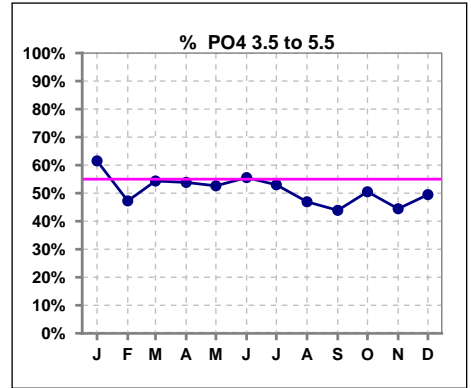
	Jan	Feb	Mar	Apr	May	Jun	Jul	Aug	Sep	Oct	Nov	Dec
# PO4	91	91	92	91	95	99	100	98	98	99	99	97
# PO4 < 5.5	58	49	54	53	55	57	58	53	51	54	47	54
Pop. Mean	5.3	5.4	5.3	5.5	5.4	5.4	5.3	5.5	5.5	5.3	5.4	5.6
Std. Deviation	1.46	1.68	1.34	1.58	1.44	1.59	1.61	1.69	1.47	1.50	1.54	1.78
% PO4 < 5.5	64%	54%	59%	58%	58%	58%	58%	54%	52%	55%	47%	56%



	Jan	Feb	Mar	Apr	May	Jun	Jul	Aug	Sep	Oct	Nov	Dec
# PO4	91	91	92	91	95	99	100	98	98	99	99	97
# PO4 > 3.5	87	83	85	84	88	93	90	89	88	88	89	89
Pop. Mean	5.3	5.4	5.3	5.5	5.4	5.4	5.3	5.5	5.5	5.3	5.4	5.6
Std. Deviation	1.46	1.68	1.34	1.58	1.44	1.59	1.61	1.69	1.47	1.50	1.54	1.78
% PO4 > 3.5	96%	91%	92%	92%	93%	94%	90%	91%	90%	89%	90%	92%



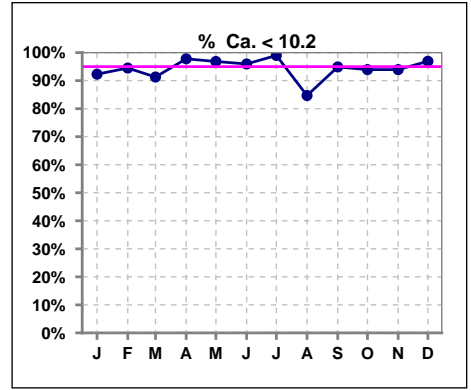
	Jan	Feb	Mar	Apr	May	Jun	Jul	Aug	Sep	Oct	Nov	Dec
# PO4	91	91	92	91	95	99	100	98	98	99	99	97
# PO4 3.5 to 5.5	56	43	50	49	50	55	53	46	43	50	44	48
Pop. Mean	5.3	5.4	5.3	5.5	5.4	5.4	5.3	5.5	5.5	5.3	5.4	5.6
Std. Deviation	1.46	1.68	1.34	1.58	1.44	1.59	1.61	1.69	1.47	1.50	1.54	1.78
% PO4 3.5 to 5.5	62%	47%	54%	54%	53%	56%	53%	47%	44%	51%	44%	49%



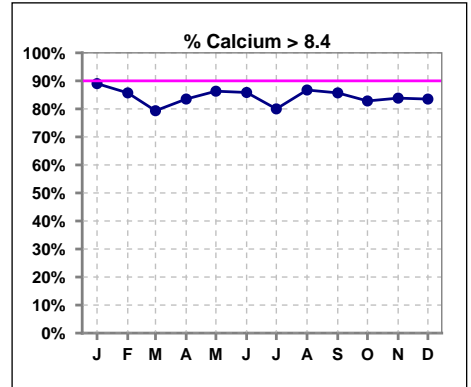
Methodology: a) All labs for 'Adequacy of Dialysis', 'Nutrition', 'Osteodystrophy', 'Anemia' and 'Diabetes' based on last value of month; b) BP's and #L processed are average of all values for month; c) Access data takes last access of month; d) Values for SGA and 'Infection Control' use most recent result.

III. OSTEODYSTROPHY - CONT.

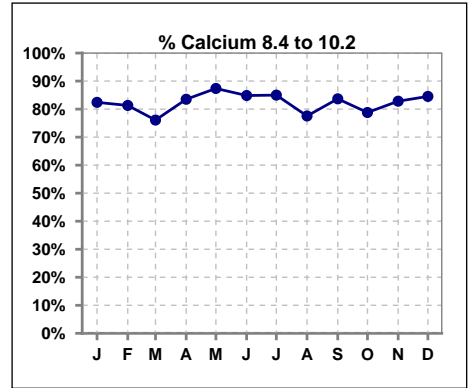
	Jan	Feb	Mar	Apr	May	Jun	Jul	Aug	Sep	Oct	Nov	Dec
# Calcium	91	91	92	91	95	99	100	98	98	99	99	97
# Calcium < 10.2	84	86	84	89	92	95	99	83	93	93	93	94
Pop. Mean	9.3	9.2	9.1	9.1	9.1	9.2	9.1	9.4	9.1	9.1	9.2	9.1
Std. Deviation	0.85	0.77	0.86	0.81	0.75	0.70	0.69	0.78	0.83	0.82	0.75	0.70
% Ca < 10.2	92%	95%	91%	98%	97%	96%	99%	85%	95%	94%	94%	97%



	Jan	Feb	Mar	Apr	May	Jun	Jul	Aug	Sep	Oct	Nov	Dec
# Calcium	91	91	92	91	95	99	100	98	98	99	99	97
# Calcium > 8.4	81	78	73	76	82	85	80	85	84	82	83	81
Pop. Mean	9.3	9.2	9.1	9.1	9.1	9.2	9.1	9.4	9.1	9.1	9.2	9.1
Std. Deviation	0.85	0.77	0.86	0.81	0.75	0.70	0.69	0.78	0.83	0.82	0.75	0.70
% Calcium > 8.4	89%	86%	79%	84%	86%	86%	80%	87%	86%	83%	84%	84%

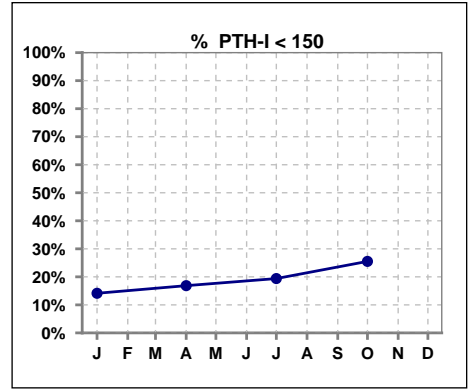


	Jan	Feb	Mar	Apr	May	Jun	Jul	Aug	Sep	Oct	Nov	Dec
# Calcium	91	91	92	91	95	99	100	98	98	99	99	97
# Calcium 8.4 to 10.2	75	74	70	76	83	84	85	76	82	78	82	82
Pop. Mean	9.3	9.2	9.1	9.1	9.1	9.2	9.1	9.4	9.1	9.1	9.2	9.1
Std. Deviation	0.85	0.77	0.86	0.81	0.75	0.70	0.69	0.78	0.83	0.82	0.75	0.70
% Calcium 8.4 to 10.2	82%	81%	76%	84%	87%	85%	85%	78%	84%	79%	83%	85%

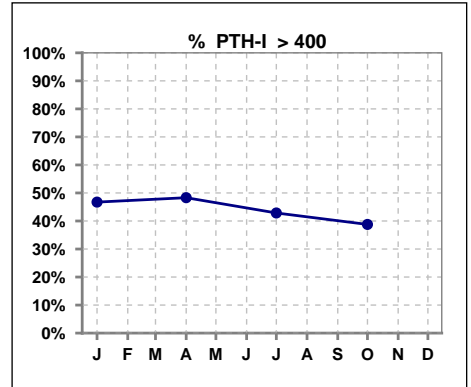


III. OSTEODYSTROPHY - CONT.

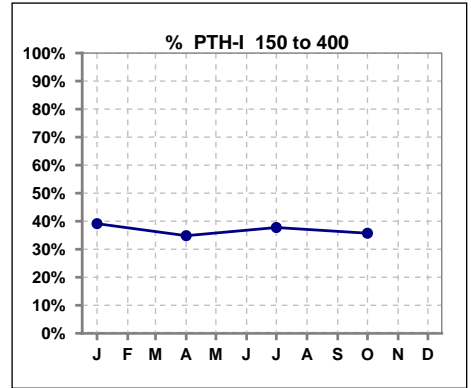
	Jan	Feb	Mar	Apr	May	Jun	Jul	Aug	Sep	Oct	Nov	Dec
# PTH-I	92			89			98			98		
# PTH-I < 150	13			15			19			25		
Pop. Mean	475			490			474			451		
Std. Deviation	363			399			394			415		
% PTH-I < 150	14%			17%			19%			26%		



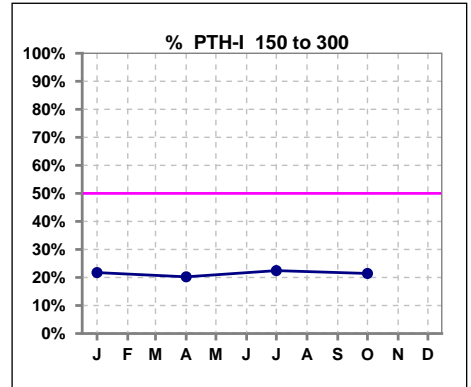
	Jan	Feb	Mar	Apr	May	Jun	Jul	Aug	Sep	Oct	Nov	Dec
# PTH-I	92			89			98			98		
# PTH-I > 400	43			43			42			38		
Pop. Mean	475			490			474			451		
Std. Deviation	363			399			394			415		
% PTH-I > 400	47%			48%			43%			39%		



	Jan	Feb	Mar	Apr	May	Jun	Jul	Aug	Sep	Oct	Nov	Dec
# PTH-I	92			89			98			98		
# PTH-I 150 to 400	36			31			37			35		
Pop. Mean	475			490			474			451		
Std. Deviation	363			399			394			415		
% PTH-I 150 to 400	39%			35%			38%			36%		



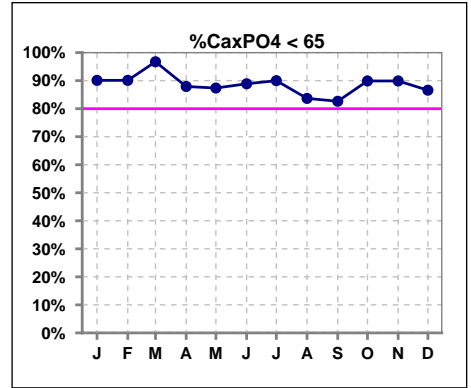
	Jan	Feb	Mar	Apr	May	Jun	Jul	Aug	Sep	Oct	Nov	Dec
# PTH-I	92			89			98			98		
# PTH-I 150 to 300	20			18			22			21		
Pop. Mean	475			490			474			451		
Std. Deviation	363			399			394			415		
% PTH-I 150 to 300	22%			20%			22%			21%		



Methodology: a) All labs for 'Adequacy of Dialysis', 'Nutrition', 'Osteodystrophy', 'Anemia' and 'Diabetes' based on last value of month; b) BP's and #L processed are average of all values for month; c) Access data takes last access of month; d) Values for SGA and 'Infection Control' use most recent result.

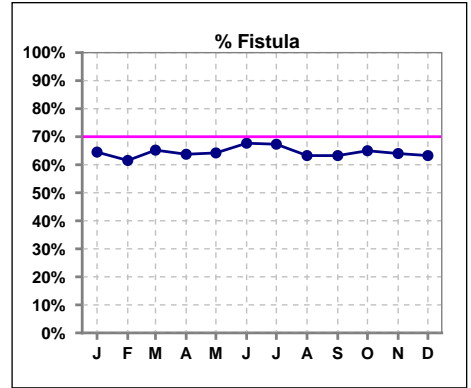
III. OSTEODYSTROPHY - CONT.

	Jan	Feb	Mar	Apr	May	Jun	Jul	Aug	Sep	Oct	Nov	Dec
# Ca x PO4	91	91	92	91	95	99	100	98	98	99	99	97
# Ca x PO4 < 65	82	82	89	80	83	88	90	82	81	89	89	84
Pop. Mean	48.6	49.1	48.0	49.8	48.8	49.7	48.3	51.4	49.7	48.0	49.5	51.0
Std. Deviation	13.0	15.1	12.0	13.6	13.4	14.9	13.3	15.5	13.6	13.5	14.3	16.0
% Ca x PO4 < 65	90%	90%	97%	88%	87%	89%	90%	84%	83%	90%	90%	87%

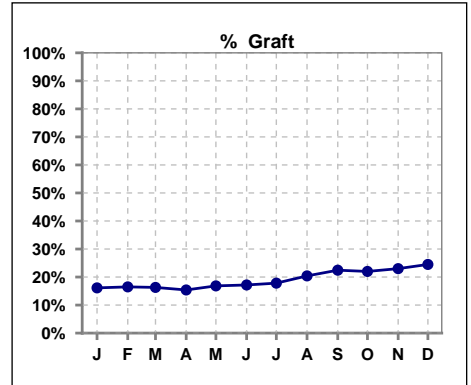


IV. ACCESS

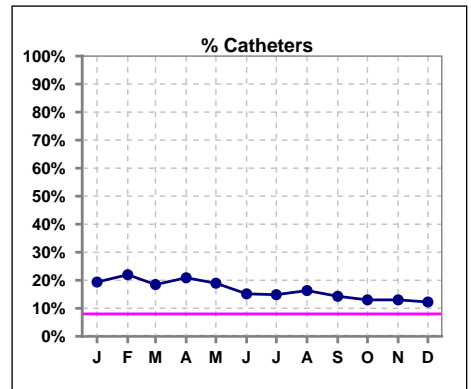
	Jan	Feb	Mar	Apr	May	Jun	Jul	Aug	Sep	Oct	Nov	Dec
# Access	93	91	92	91	95	99	101	98	98	100	100	98
# Fistula	60	56	60	58	61	67	68	62	62	65	64	62
% Fistula	65%	62%	65%	64%	64%	68%	67%	63%	63%	65%	64%	63%



	Jan	Feb	Mar	Apr	May	Jun	Jul	Aug	Sep	Oct	Nov	Dec
# Access	93	91	92	91	95	99	101	98	98	100	100	98
# Graft	15	15	15	14	16	17	18	20	22	22	23	24
% Graft	16%	16%	16%	15%	17%	17%	18%	20%	22%	22%	23%	24%



	Jan	Feb	Mar	Apr	May	Jun	Jul	Aug	Sep	Oct	Nov	Dec
# Access	93	91	92	91	95	99	101	98	98	100	100	98
# Catheters	18	20	17	19	18	15	15	16	14	13	13	12
% Catheters	19%	22%	18%	21%	19%	15%	15%	16%	14%	13%	13%	12%

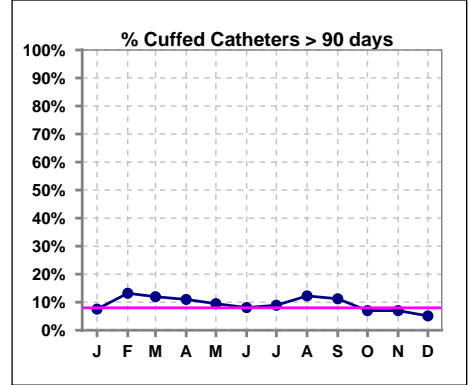


Methodology: a) All labs for 'Adequacy of Dialysis', 'Nutrition', 'Osteodystrophy', 'Anemia' and 'Diabetes' based on last value of month; b) BP's and #L processed are average of all values for month; c) Access data takes last access of month; d) Values for SGA and 'Infection Control' use most recent result.

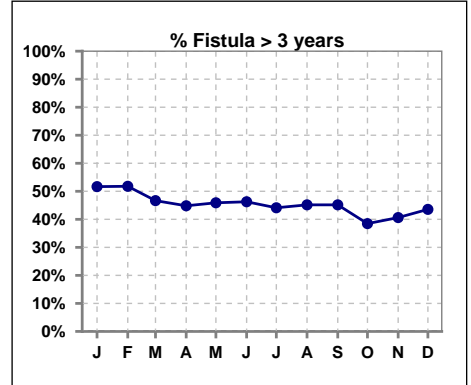
IV. ACCESS - CONT.

Cuffed Catheters > 90 days

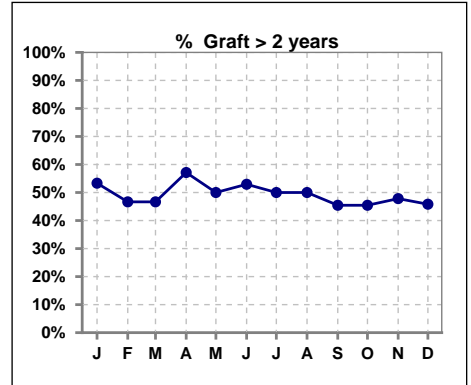
	Jan	Feb	Mar	Apr	May	Jun	Jul	Aug	Sep	Oct	Nov	Dec
# Access	93	91	92	91	95	99	101	98	98	100	100	98
# Cuffed Catheters	7	12	11	10	9	8	9	12	11	7	7	5
% Cuffed Catheters	8%	13%	12%	11%	9%	8%	9%	12%	11%	7%	7%	5%



	Jan	Feb	Mar	Apr	May	Jun	Jul	Aug	Sep	Oct	Nov	Dec
# Fistula	60	56	60	58	61	67	68	62	62	65	64	62
# Fistula > 3 yrs	31	29	28	26	28	31	30	28	28	25	26	27
% Fistula > 3 yrs	52%	52%	47%	45%	46%	46%	44%	45%	45%	38%	41%	44%



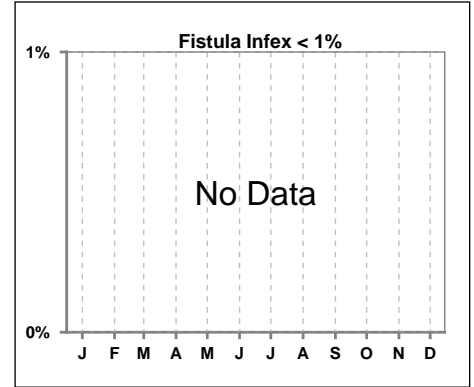
	Jan	Feb	Mar	Apr	May	Jun	Jul	Aug	Sep	Oct	Nov	Dec
# Graft	15	15	15	14	16	17	18	20	22	22	23	24
# Graft > 2 yrs	8	7	7	8	8	9	9	10	10	10	11	11
% Graft > 2 yrs	53%	47%	47%	57%	50%	53%	50%	50%	45%	45%	48%	46%



IV. ACCESS - CONT.

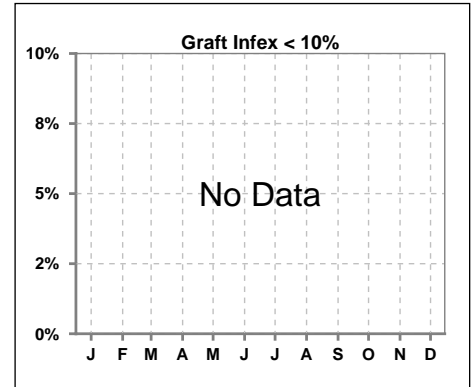
Infection per use-life of access fistula

	Jan	Feb	Mar	Apr	May	Jun	Jul	Aug	Sep	Oct	Nov	Dec
Infex per use-life												



Infection per use-life of access graft

	Jan	Feb	Mar	Apr	May	Jun	Jul	Aug	Sep	Oct	Nov	Dec
Infex per use-life												



Thrombosis Episode - access fistula

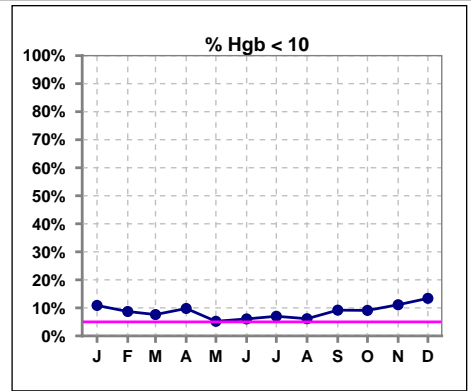
	Jan	Feb	Mar	Apr	May	Jun	Jul	Aug	Sep	Oct	Nov	Dec
Current Month											0.03	
Rolling Year-to-date						0.03					0.01	0.01

Thrombosis Episode - access graft

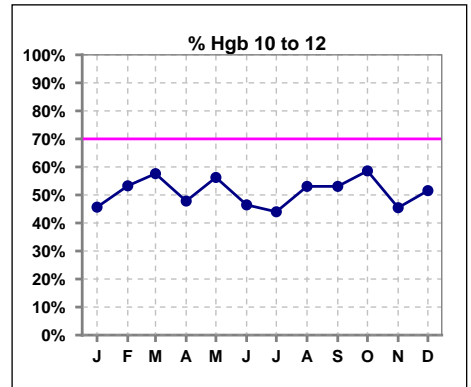
	Jan	Feb	Mar	Apr	May	Jun	Jul	Aug	Sep	Oct	Nov	Dec
Current Month										0.10		
Rolling Year-to-date						0.06	0.05	0.04	0.03	0.03	0.02	0.02

V. ANEMIA

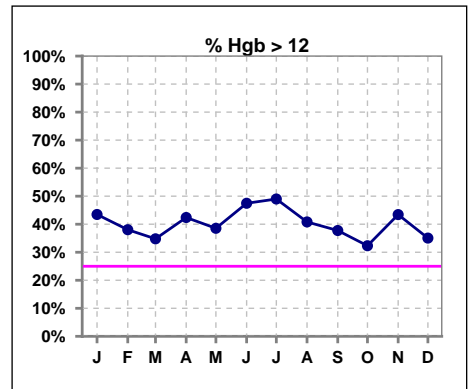
	Jan	Feb	Mar	Apr	May	Jun	Jul	Aug	Sep	Oct	Nov	Dec
# Hgb	92	92	92	92	96	99	100	98	98	99	99	97
# Hgb < 10	10	8	7	9	5	6	7	6	9	9	11	13
Pop. Mean	11.8	11.8	11.6	11.8	11.8	11.9	12.0	11.8	11.8	11.6	11.6	11.5
Std. Deviation	1.4	1.5	1.4	1.5	1.4	1.3	1.3	1.3	1.4	1.4	1.4	1.4
% Hgb < 10	11%	9%	8%	10%	5%	6%	7%	6%	9%	9%	11%	13%



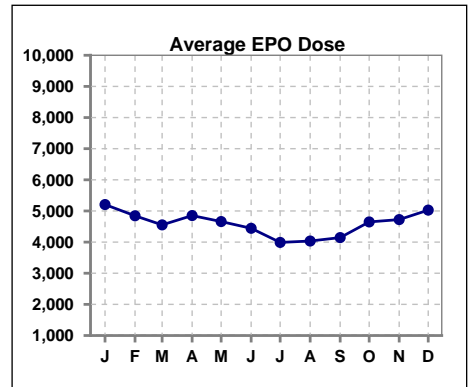
	Jan	Feb	Mar	Apr	May	Jun	Jul	Aug	Sep	Oct	Nov	Dec
# Hgb	92	92	92	92	96	99	100	98	98	99	99	97
# Hgb 10 to 12	42	49	53	44	54	46	44	52	52	58	45	50
Pop. Mean	11.8	11.8	11.6	11.8	11.8	11.9	12.0	11.8	11.8	11.6	11.6	11.5
Std. Deviation	1.4	1.5	1.4	1.5	1.4	1.3	1.3	1.3	1.4	1.4	1.4	1.4
% Hgb 10 to 12	46%	53%	58%	48%	56%	46%	44%	53%	53%	59%	45%	52%



	Jan	Feb	Mar	Apr	May	Jun	Jul	Aug	Sep	Oct	Nov	Dec
# Hgb	92	92	92	92	96	99	100	98	98	99	99	97
# Hgb > 12	40	35	32	39	37	47	49	40	37	32	43	34
Pop. Mean	11.8	11.8	11.6	11.8	11.8	11.9	12.0	11.8	11.8	11.6	11.6	11.5
Std. Deviation	1.4	1.5	1.4	1.5	1.4	1.3	1.3	1.3	1.4	1.4	1.4	1.4
% Hgb > 12	43%	38%	35%	42%	39%	47%	49%	41%	38%	32%	43%	35%



	Jan	Feb	Mar	Apr	May	Jun	Jul	Aug	Sep	Oct	Nov	Dec
# Average EPO Dose	5206	4845	4552	4852	4660	4444	3990	4034	4145	4648	4723	5027

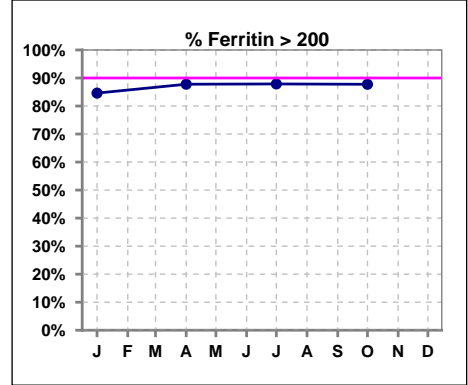


Methodology: a) All labs for 'Adequacy of Dialysis', 'Nutrition', 'Osteodystrophy', 'Anemia' and 'Diabetes' based on last value of month; b) BP's and #L processed are average of all values for month; c) Access data takes last access of month; d) Values for SGA and 'Infection Control' use most recent result.

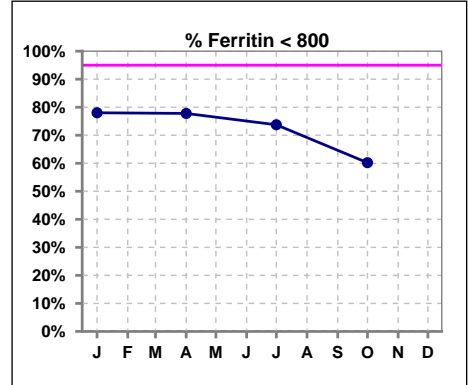
V. ANEMIA - CONT.

Iron Profile

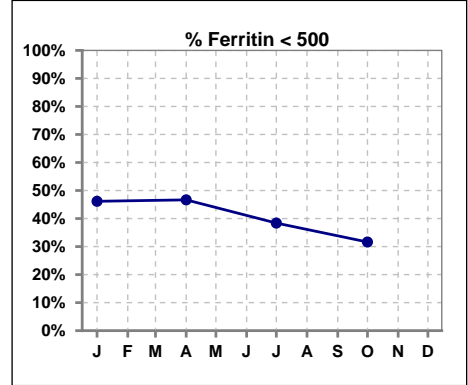
	Jan	Feb	Mar	Apr	May	Jun	Jul	Aug	Sep	Oct	Nov	Dec
# Ferritin	91			90			99			98		
# Ferritin > 200	77			79			87			86		
Pop. Mean	557			569			634			722		
Std. Deviation	314			331			406			471		
% Ferritin > 200	85%			88%			88%			88%		



	Jan	Feb	Mar	Apr	May	Jun	Jul	Aug	Sep	Oct	Nov	Dec
# Ferritin	91			90			99			98		
# Ferritin < 800	71			70			73			59		
Pop. Mean	557			569			634			722		
Std. Deviation	314			331			406			471		
% Ferritin < 800	78%			78%			74%			60%		



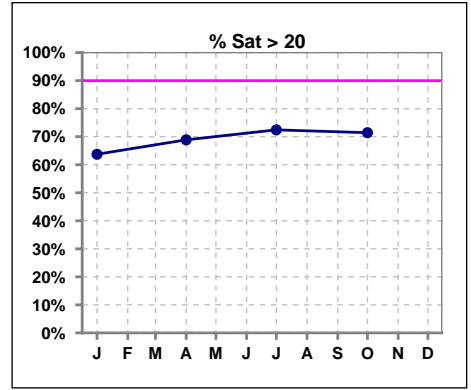
	Jan	Feb	Mar	Apr	May	Jun	Jul	Aug	Sep	Oct	Nov	Dec
# Ferritin	91			90			99			98		
# Ferritin < 500	42			42			38			31		
Pop. Mean	557			569			634			722		
Std. Deviation	314			331			406			471		
% Ferritin < 500	46%			47%			38%			32%		



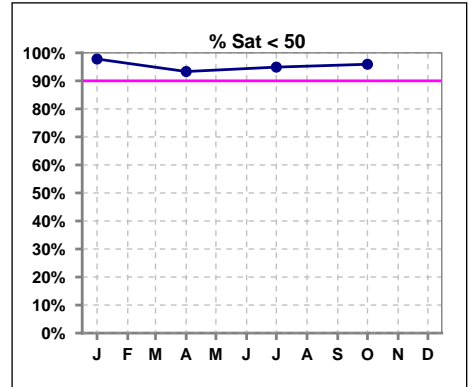
Methodology: a) All labs for 'Adequacy of Dialysis', 'Nutrition', 'Osteodystrophy', 'Anemia' and 'Diabetes' based on last value of month; b) BP's and #L processed are average of all values for month; c) Access data takes last access of month; d) Values for SGA and 'Infection Control' use most recent result.

V. ANEMIA - CONT.

	Jan	Feb	Mar	Apr	May	Jun	Jul	Aug	Sep	Oct	Nov	Dec
# % Sat	91			90			98			98		
# % Sat > 20	58			62			71			70		
Pop. Mean	25			28			27			28		
Std. Deviation	11			15			12			14		
% Sat% > 20	64%			69%			72%			71%		

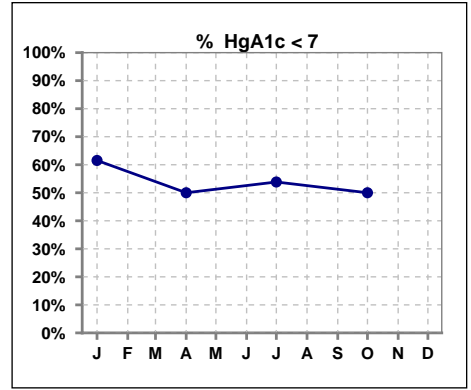


	Jan	Feb	Mar	Apr	May	Jun	Jul	Aug	Sep	Oct	Nov	Dec
# % Sat	91			90			98			98		
# % Sat < 50	89			84			93			94		
Pop. Mean	25			28			27			28		
Std. Deviation	11			15			12			14		
% Sat% < 50	98%			93%			95%			96%		



VI. Diabetes

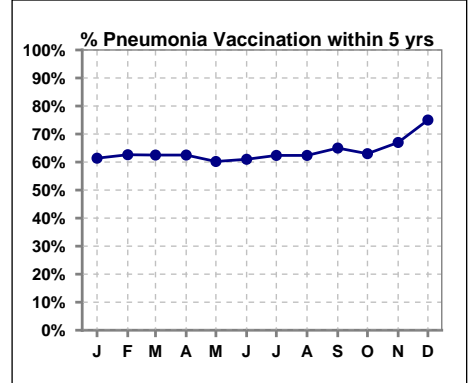
	Jan	Feb	Mar	Apr	May	Jun	Jul	Aug	Sep	Oct	Nov	Dec
# HgA1c	39			36			39			46		
# HgA1c < 7	24			18			21			23		
Pop. Mean	6.8			7.2			7.1			7.1		
Std. Deviation	1.63			1.84			1.68			1.78		
% HgA1c < 7	62%			50%			54%			50%		



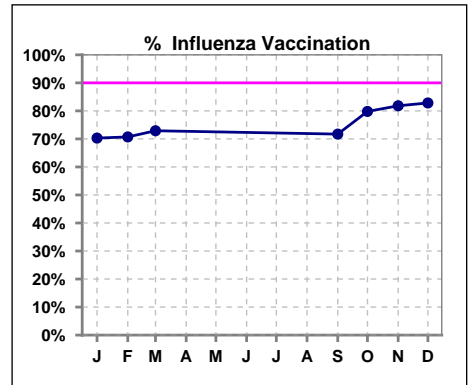
VII. Infection Control

Pneumonia vaccination within the past five years

	Jan	Feb	Mar	Apr	May	Jun	Jul	Aug	Sep	Oct	Nov	Dec
# Patient	101	99	96	96	98	100	101	101	100	100	100	100
# Pneumonia	62	62	60	60	59	61	63	63	65	63	67	75
% Pneumonia	61%	63%	63%	63%	60%	61%	62%	62%	65%	63%	67%	75%



	Jan	Feb	Mar	Apr	May	Jun	Jul	Aug	Sep	Oct	Nov	Dec
# Patient	101	99	96						99	99	99	99
# Influenza	71	70	70						71	79	81	82
% Influenza	70%	71%	73%						72%	80%	82%	83%



Methodology: a) All labs for 'Adequacy of Dialysis', 'Nutrition', 'Osteodystrophy', 'Anemia' and 'Diabetes' based on last value of month; b) BP's and #L processed are average of all values for month; c) Access data takes last access of month; d) Values for SGA and 'Infection Control' use most recent result.